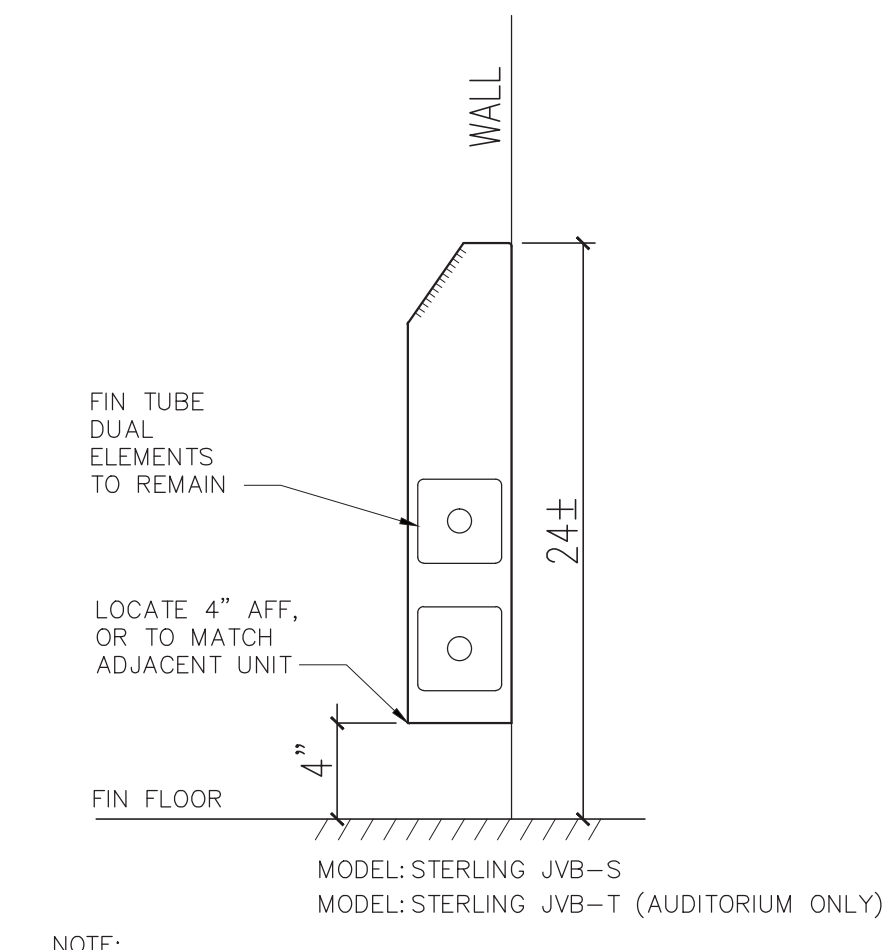


INSULATION SCHEDULE													
TYPE	EQUIPMENT OR SYSTEM SERVED	INSULATION CLASS (a)			JACKETING CLASS (b)			THICKNESS (IN)					
		INTERIOR CONCEALED	INTERIOR EXPOSED	EXTERIOR	INTERIOR GENERAL	EQUIPMENT ROOMS	EXTERIOR	NOMINAL PIPE SIZE (N)				DUCTWORK (c)	
								<1"	1"-<1 1/2"	1 1/2"-<4"	4"-<8"		≥8" & UP
A	DCW, COOLING COIL CONDENSATE	FE	--	--	0	--	--	0.5	0.5	1.0	1.0	1.0	
		--	FE	--	--	4	--	0.5	0.5	1.0	1.0	1.0	
		FG	--	--	1	--	--	1.5	1.5	2	2	2	
B	HWS, HWR	--	FG	--	1	1	--	1.5	1.5	2	2	2	
		--	--	UR	--	--	6	1.5	1.5	2	2	2	
		FG (d)	--	--	2	--	--	--	--	--	--	--	1.5(g)
C	DUCTWORK	--	FG (e)	--	2	2	--	--	--	--	--	--	2 (f)(g)
		--	--	UR(e)	--	3	--	--	--	--	--	--	2 (i)

ALL INSULATION TO COMPLY WITH 2015 NYS ENERGY CONSERVATION CONSTRUCTION CODE

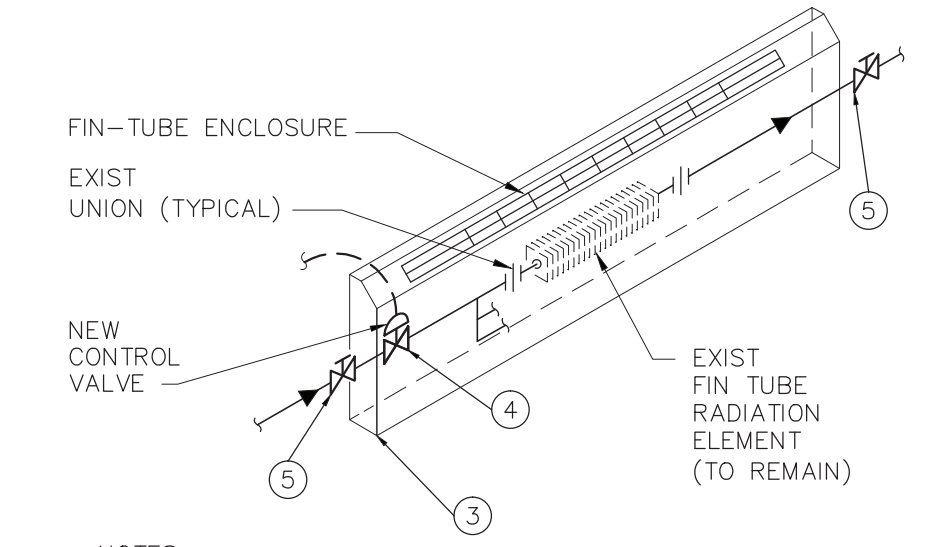
EXHAUST FAN SCHEDULE										
UNIT NO.	LOCATION /SERVICE	FAN TYPE	AIR FLOW CFM	STATIC PRESS. (IN WG.)	MAX. RPM	HP/WATTS	VOLT/PHASE	MODEL	MFG	REMARKS
EP-1	BATHROOM	CEILING	80	.25	1100	52.5	115/60/1	SP-A125	GREENHECK	(1)(2)(3)

REMARKS:
 1. PROVIDE VIBRATION ISOLATORS. PROVIDE ANGLE SUPPORTS AND SUSPENSION RODS AS REQUIRED.
 2. PROVIDE GREENHECK WALL CAP MODEL WC-6 (OR APPROVED EQUAL) SEAL WATER TIGHT
 3. PROVIDE "VARI-SPEED" CONTROLS. MOUNT INTERNALLY



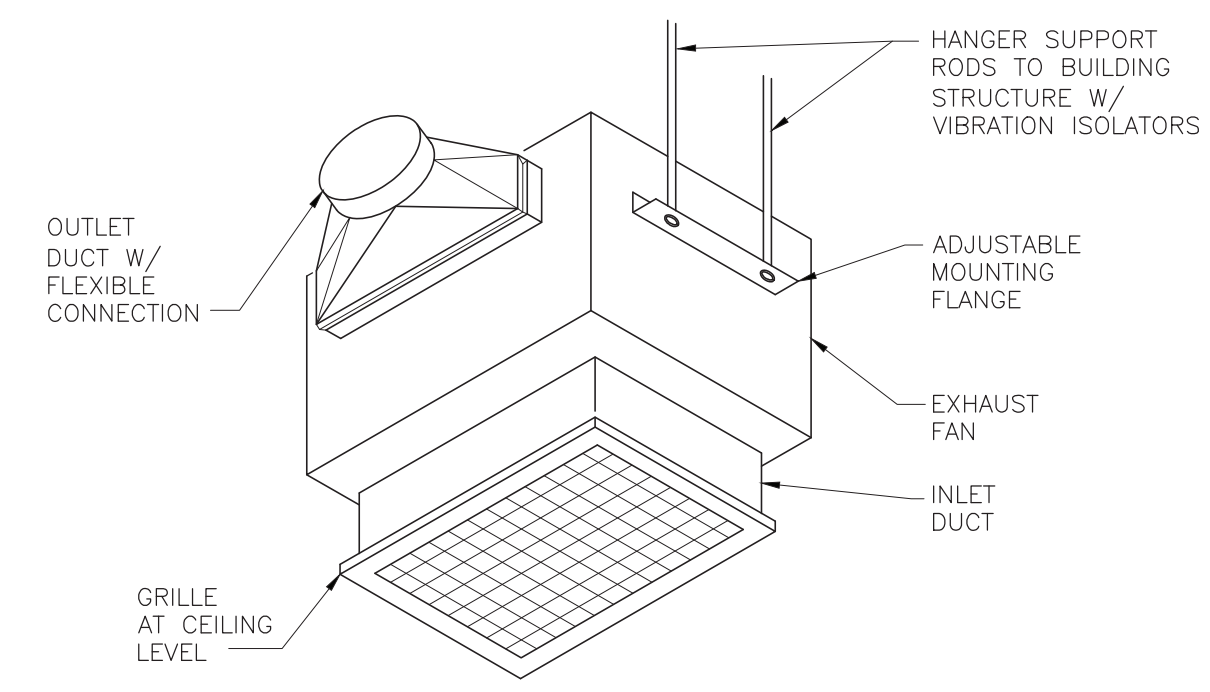
NOTE:
 1. PROVIDE NEW MOUNTING BRACKETS AND HARDWARE AS REQUIRED. SECURELY ANCHOR TO WALL (TYPICAL)
 2. MOUNT PER MANUFACTURER'S RECOMMENDATIONS.

2 FIN TUBE ENCLOSURE DETAIL
SCALE: NONE

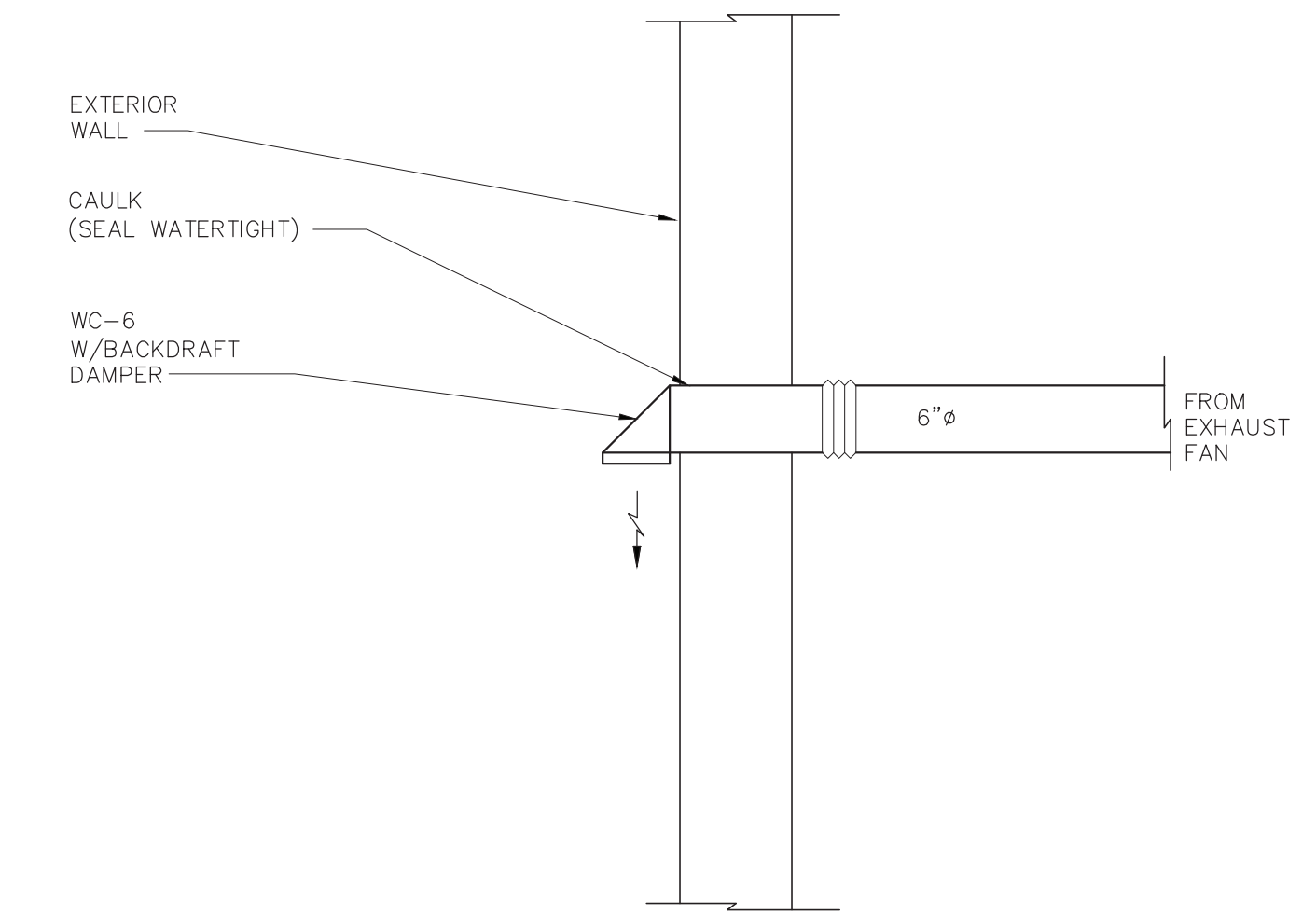


NOTES:
 1. LOCATE CONTROL VALVES, SO THAT THEY ARE EASILY ACCESSIBLE FOR INSPECTION AND MAINTENANCE. WHERE INSTALLATIONS REQUIRE VALVES TO BE CONCEALED, PROVIDE ACCESS DOORS IN APPROPRIATE LOCATIONS.
 2. REFER TO PLANS FOR CIRCUITING OF MULTIPLE FIN TUBE SECTIONS WITH COMMON CONTROL VALVES FOR ZONING OF SYSTEMS.
 3. CONTRACTOR TO REMOVE FIN TUBE COVERS AS REQUIRED FOR INSTALLATION OF NEW CONTROL VALVES. (TYPICAL)
 4. CONTROL VALVES SUPPLIED BY CONTROLS CONTRACTOR AND INSTALLED BY MECH CONTRACTOR
 5. PROVIDE NEW SHUT OFF VALVES ON THE SUPPLY AND RETURN PIPING.
 6. CONTRACTOR TO INCLUDE A UNIT PRICE FOR AN ADDITIONAL 100 FEET OF EXTRA PIPE. UNIT PRICE IS FOR WORK THAT IS IN ADDITION TO THE WORK INDICATED ON THE CONSTRUCTION DOCUMENTS AND CAN BE UTILIZED AS A CREDIT OR A DEDUCT FOR WORK NOT NECESSARY.

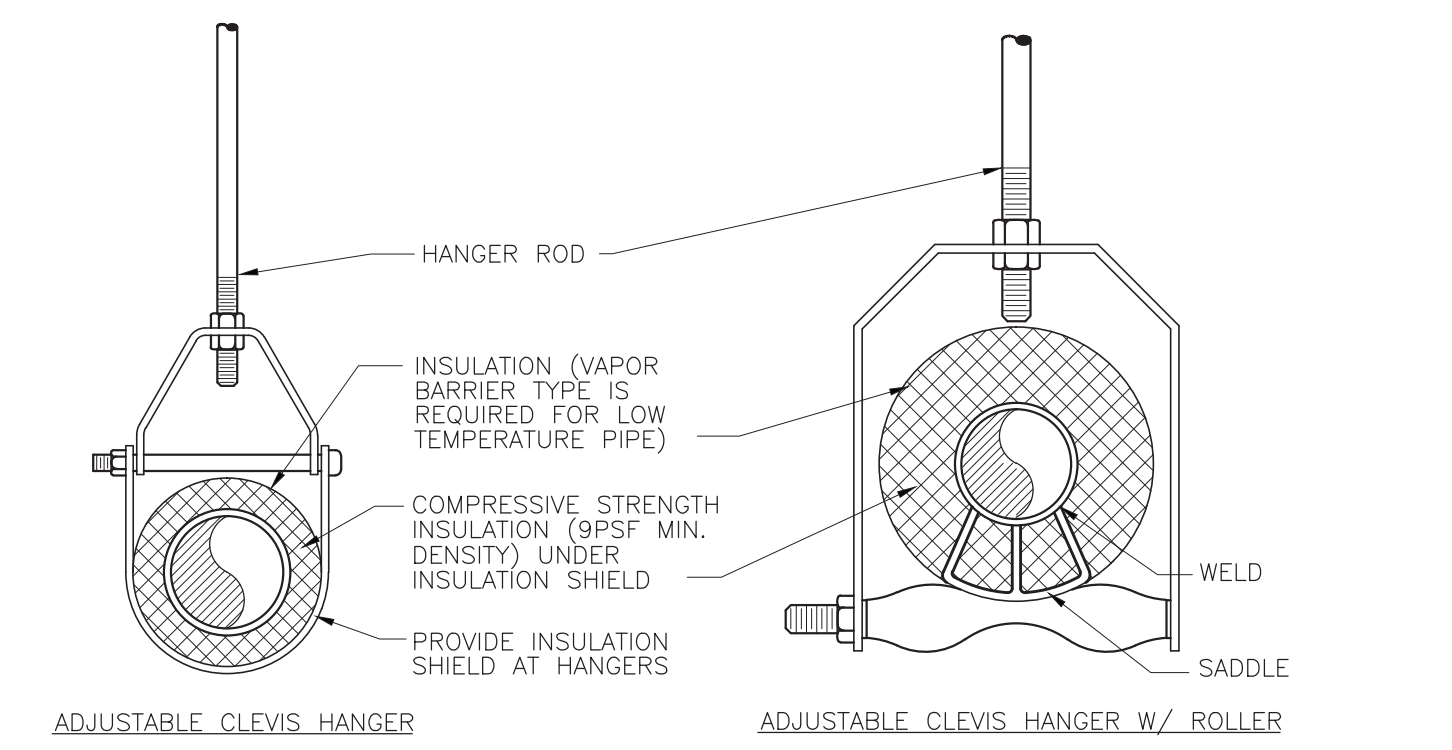
1 FIN TUBE RADIATION PIPING DETAIL
SCALE: NONE



3 EXHAUST FAN DETAIL
SCALE: NONE

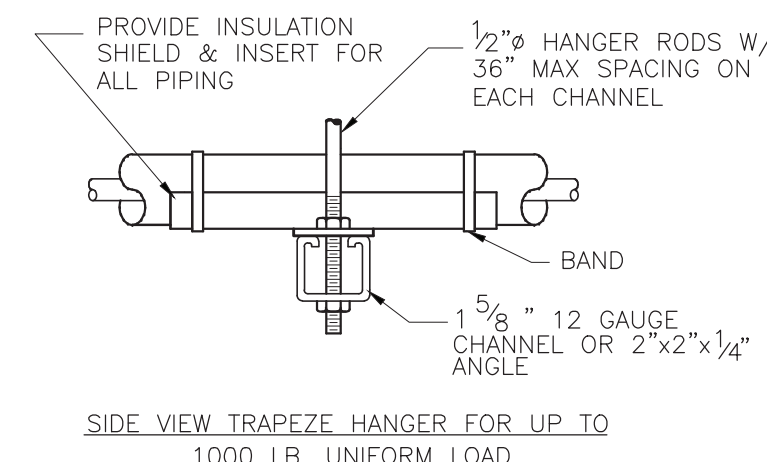


4 EXHAUST DUCT DETAIL
SCALE: NONE



MAXIMUM PIPE/TUBING SUPPORT SPACING					
SIZE IN.	THRU 3/4"	1"	1 1/4"	1 1/2"	2"
PIPE FT.	6	6	6	6	6
TUBING FT.	6	6	6	6	6

NOTE:
 1. FOR TRAPEZE HANGER TAKE SPACING OF SMALLEST SIZE ON TRAPEZE.



5 PIPE SUPPORT DETAIL
SCALE: NONE

IT IS A VIOLATION OF THE LAW FOR ANY PERSON UNLESS HE IS ACTING UNDER THE DIRECTION OF A LICENSED PROFESSIONAL ARCHITECT/ENGINEER TO ALTER THE DRAWINGS IN ANY WAY. REVISIONS MUST HAVE THE SEAL, ATTACHED ALONG WITH A DESCRIPTION OF THE REVISION, THE SIGNATURE AND DATE. COPYRIGHT © 2017

ENGINEER:

 Eisenbach & Ruhke Engineering, P.C.
 297 Geneva Street - Union, NY 13850
 (518) 532-2010 FAX: (518) 532-2040
 www.erenpc.com

CONSULTANT(S):

STAMP

YONKERS PUBLIC SCHOOLS
 BOILER SYSTEM RENOVATION AND
 ASBESTOS ABATEMENT AT
 SCHOOL 9
 53 FAIRVIEW STREET, YONKERS N.Y. 10703
 S.E.D.# 06-20-001-0-008-008

E&R PROJECT NO.	Y170901
YPS NO.	10816

REVISION	DATE	BY
ISSUED FOR BID	10.20.2020	JMJ
DRAWN BY		JMJ
CHECKED BY		JIE
SHEET SIZE	A01 E1 30" x 42"	
SCALE	AS NOTED	

SHEET TITLE
 DETAILS AND SCHEDULES

SHEET NO.
 M-500

FILE PATH - N:\1 - PROJECT DIRECTORIES\YONKERS PUBLIC SCHOOLS\9 School 9\170901 Boiler System Replacement YPS 10816\Additional\Work\1\170901.m500.dwg