

66.23.00.01.0.016.009

YONKERS, NEW YORK 10589

10845

PROJECT NAME

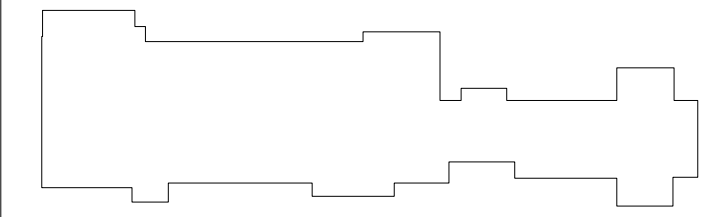
YONKERS  
PUBLIC SCHOOLS

PS 16 - YONKERS

759 NORTH BROADWAY  
YONKERS, NY 10701

RESTORATION OF  
BUILDING ENVELOPE,  
INTERIORS, SECURITY  
& SITE

KEY PLAN



1 PART. BASEMENT PLAN - ABATEMENT

SCALE: 1/8"=1'-0"

1	PARALLEL PERSONAL AND WASTE DECONTAMINATION SYSTEM ENCLOSURES LARGE ASBESTOS PROJECT	2	PERSONAL DECONTAMINATION ENCLOSURE LARGE SCALE	3	CROSS SECTION OF AIRLOCK TYPICAL AIR LOCK DETAIL PLAN OF AIRLOCK
4	PERSONAL DECONTAMINATION SYSTEM ENCLOSURES LARGE ASBESTOS PROJECT	5	WASTE DECONTAMINATION SYSTEM ENCLOSURE - LARGE ASBESTOS PROJECT (OPTIONAL FOR SMALL ASBESTOS PROJECT)	6	PERSONAL AND WASTE DECONTAMINATION SYSTEM ENCLOSURE FOR A SMALL ASBESTOS PROJECT

ASBESTOS ABATEMENT KEYNOTES	QTY.
AA1 REMOVE AND DISPOSE OF ASBESTOS CONTAINING FLOOR TILE ACCENT STRIP. ALL ASBESTOS CONTAINING MATERIAL SHALL BE REMOVED IN ITS ENTIRETY FROM THE SUBSTRATE.	40 SQ. FT.
AA2 REMOVE AND DISPOSE OF ASBESTOS CONTAINING FLOOR TILE, LEVELING COMPOUND AND MASTICS. ALL ASBESTOS CONTAINING MATERIAL SHALL BE REMOVED IN ITS ENTIRETY FROM THE SUBSTRATE.	745 SQ. FT.
AA3 REMOVE AND DISPOSE OF ASBESTOS CONTAINING TAR VAPOR BARRIER UNDER WOOD FLOORING. TOP 3 LAYERS OF FLOORING MAY BE REMOVED AND DISPOSED OF AS GENERAL CONSTRUCTION DEBRIS. ALL ASBESTOS CONTAINING MATERIAL SHALL BE REMOVED IN ITS ENTIRETY FROM THE SUBSTRATE.	785 SQ. FT.
AA4 REMOVE AND DISPOSE OF LIGHTS AND ELECTRICAL WIRING AS ASBESTOS CONTAINING MATERIAL.	12 LIGHTS / 24 LF OF WIRING

- GENERAL ABATEMENT NOTES:
- SPECIFICATION SECTION 02 8200 AND THE ABATEMENT LEGEND LIST APPROXIMATE QUANTITIES FOR REMOVAL, BUT THE CONTRACTOR IS ALONE RESPONSIBLE FOR DETERMINING THE ACTUAL ABATEMENT QUANTITIES OF ACM INCLUDING, SIZES, LENGTHS, SQUARE FOOTAGES AND CONFIGURATIONS.
  - THIS FACILITY WILL BE OCCUPIED DURING CONSTRUCTION WORK.
  - SHUT DOWN AND ISOLATE EXISTING MECHANICAL EQUIPMENT SYSTEMS TO PREVENT CONTAMINATION AND DISPERSAL TO OTHER AREAS IN THE BUILDING. COORDINATE WITH THE OWNER'S REPRESENTATIVE.
  - ANY CRITICAL ELECTRICAL RUNS THROUGH THE WORK AREA SHALL REMAIN ACTIVE DURING THE ENTIRE ABATEMENT PROCESS. CONTRACTOR SHALL BE RESPONSIBLE FOR ANY REQUIRED VARIANCES REQUIRED TO MAINTAIN CRITICAL ELECTRICAL RUNS.
  - ALL SCHEDULED ABATEMENT WORK SHALL BE COORDINATED WITH THE OWNER'S REPRESENTATIVE. FOLLOW ALL RULES AND REGULATIONS OF NYS ICR 56, EPA, OSHA AND OTHER APPLICABLE FEDERAL, STATE AND LOCAL REGULATIONS DURING THE ENTIRE PROJECT.
  - CONTRACTOR SHALL ATTEND THE PRE-WORK CONFERENCE AND PROVIDE A DETAILED ABATEMENT WORK PLAN FOR REVIEW.
  - CONTRACTOR SHALL BE RESPONSIBLE FOR ON-SITE SAFETY AND SECURITY OF HIS/HER EMPLOYEES DURING ALL HAZARDOUS REMOVAL ACTIVITIES. CONTRACTOR ALSO ASSUMES RESPONSIBILITY FOR PROCEEDING WITH THE WORK IN A MANNER THAT OFFERS THEIR EMPLOYEES A WORKPLACE FREE FROM RECOGNIZED HAZARDS CAUSING SERIOUS HEALTH, HARM OR INJURY.
  - PROVIDE TO THE OWNER'S REPRESENTATIVE ALL WASTE TRANSPORTER PERMITS, WASTE DISPOSAL RECEIPTS AND THE CONTRACTOR'S POST ABATEMENT REPORT. SEE THE CLOSEOUT SUBMITTAL SECTION IN EACH OF THE ABATEMENT SPEC SECTIONS FOR DETAILS.
  - IT IS THE RESPONSIBILITY OF THE CONTRACTOR TO VERIFY THAT LANDFILL DOES ACCEPT ALL OF THE TYPES OF HAZARDOUS MATERIALS WITHIN PROJECTS SCOPE OF WORK.
  - ANY REMOVAL WORK OR ANY OTHER WORK IN THESE AREAS SHALL COMMENCE ONLY AFTER THE HAZARDOUS MATERIAL REMOVAL WORK IS COMPLETED AND ONLY AFTER THE NECESSARY CLEARANCES ARE OBTAINED.
  - UPON COMPLETION OF HAZARDOUS MATERIAL REMOVALS WORK, ANY EXISTING AREAS AND/OR FINISHES THAT HAVE BEEN DAMAGED THAT ARE NOT PART OF THE REMOVAL SCOPES OF WORK (INCLUDES AREAS AND/OR FINISHES AS A RESULT OF ANY TEMPORARY PARTITIONS AND WASTE DECON UNIT ENCLOSURES CONSTRUCTION) SHALL BE RESTORED TO ORIGINAL CONDITIONS BY THE CONTRACTOR AT CONTRACTOR'S EXPENSE. FINISH RESTORATION SHALL BE APPROVED BY THE OWNER'S REPRESENTATIVE.
  - THE RESULTS OF THE TESTING FOR ACM & LEAD ARE LISTED IN THE BUILDING ASBESTOS SURVEY REPORT BOUND AT THE END OF SPEC. SECTION 02 8200.

SCALE: AS SHOWN  
DATE: 1/23/19  
DRAWN BY: K.C.  
CHECKED BY: C.G.

DRAWING TITLE

PART. BASEMENT  
ABATEMENT PLAN

SHEET NO.

AA100

332 ROUTE 100  
SONWERS, NEW YORK 10589  
TEL (914) 276-0777  
FAX (914) 276-0779  
CPLteam.com  
ARCHITECTURE • ENGINEERING • PLANNING

CONSULTANTS

CIVIL ENGINEER CONSULTANT

INSITE  
ENGINEERING, SURVEYING &  
LANDSCAPE ARCHITECTURE, P.C.  
3 Carrell Place  
Carroll, NY 10812  
(914) 225-9890  
(914) 225-9717 fax  
www.insite-nyc.com

SECURITY CONSULTANT

ITG Larson, Inc.  
155 Lafayette Ave, White Plains, NY 10603

ENVIRONMENTAL CONSULTANT  
ADELAIDE ENVIRONMENTAL HEALTH ASSOC.  
1511 RT 22, BRUWSTER, NY 10509  
TEL: 914.276.7710

MECHANICAL ELECTRICAL CONSULTANT  
BARILE GALLAGHER & ASSOCIATES  
CONSULTING ENGINEERS  
39 HARBOR AVE. FREE HANSENVILLE, NY 10740  
PHONE: 914.226.0990 FAX: 914.226.1194 Email: BGGA-Eng.com

REV. NO.	DATE	DESCRIPTION
	01/23/19	SED FOR BUILDING PERMIT
	09/15/19	ISSUED FOR BID
	11/16/20	ISSUED FOR BID
	01/07/21	CLARIFICATION