

ADDENDUM NO. 1

OWNER: YONKERS PUBLIC SCHOOLS
ONE LARKIN CENTER
YONKERS, NEW YORK 10701

PROJECT NAME: YONKERS PUBLIC SCHOOLS
AUDITORIUM UPGRADES AND RELATED WORK
LINCOLN HIGH SCHOOL YPS #10873

SED NO: 66-23-00-01-0-202-015

This Addendum is hereby included in and made a part of the Contract Documents, dated 2/12/2021, whether or not attached thereto.

All requirements of the original project specifications and drawings shall remain in force except as amended by this addendum.

DATE: March 22, 2021

This addendum consists of Two (2) pages and revised drawings E201, E202 and sketches SK-A1.0, SK-E1.0.

THE FOLLOWING ARE MODIFICATIONS, CLARIFICATIONS, DELETIONS OR ADDITIONS TO THE SPECIFICATIONS:

SECTION 08 7101 – DOOR HARDWARE

08 7101-13, 3.9 **ADD** “Set: 5.0 (1) Deadbolt Lock DL3017 626 RU
(1) permanent core (match facility standard)”

THE FOLLOWING ARE MODIFICATIONS, CLARIFICATIONS, DELETIONS OR ADDITIONS TO THE DRAWINGS:

DRAWING A111 – PARTIAL THIRD FLOOR PLAN

ADD Hardware set No. 5 to (3) three existing HM access doors to upper auditorium catwalks.

DRAWING A200 – PARTIAL REFLECTED CEILING PLAN

ADD note “If pipe scaffolding is being used, conform to the following requirements:

QUALITY ASSURANCE

- A. Obtain all components of pipe scaffolding from a single source supplier or manufacturer.
 - 1. Install the pipe scaffolding using personnel thoroughly skilled and competent in the work.
 - 2. Furnish and install all scaffold, including supports, fastenings, connections, and details that are designed, sealed and signed by a New York State licensed Professional Engineer, utilizing a minimum safety factor of not less than four times the maximum weight intended to be placed thereon when in use.
 - 3. Post signage on the scaffold, to indicate the safe permissible scaffold design load. Do not load the pipe scaffolding in excess of the safe design loads.

SUBMITTALS

- B. Manufacturer’s technical product data, specifications, and installation instructions for all components of pipe scaffolding.

1. Shop drawings showing the locations, dimensions, and details for all components and assemblies of the pipe scaffolding, signed, sealed and stamped by a professional engineer licensed in New York State.
2. Evidence that all wood products used (for example planking) are fire retardant where required by New York State code.”.

DRAWING A800 – SECOND FLOOR FINISH FLOOR PLAN

Details 2 **DELETE** illuminated nosings as shown on Sketch SK-A1.0 attached to this addendum.

DRAWING A825 – SECOND FLOOR FINISH FLOOR PLAN

Details 1 & 2 **DELETE** in their entirety.

Finish Schedule Legend **DELETE** ISN-1.

DRAWING E001 – LEGENDS, ABBREVIATIONS AND NOTES

DELETE DH1 on Legend.

DRAWING E201 – SECOND FLOOR ELECTRICAL LIGHTING PLAN

Detail 1 **DELETE** recessed light fixtures as shown on revised drawing E201 attached to this addendum.

Detail 2 **ADD** (2) Two recessed narrow beam aisle lights, fixture type H1 as shown on revised drawing E201 attached to this addendum.

DRAWING E202 – AUDITORIUM AISLE LIGHTING ELECTRICAL PLAN

DELETE in its entirety and replace with revised drawing E202 attached to this addendum.

DRAWING E301 – SECOND FLOOR ELECTRICAL POWER AND FIRE ALARM PLAN

ADD Detail 4 Partial Ground Floor Power Plan as shown on Sketch SK-E1.0 attached to this addendum.

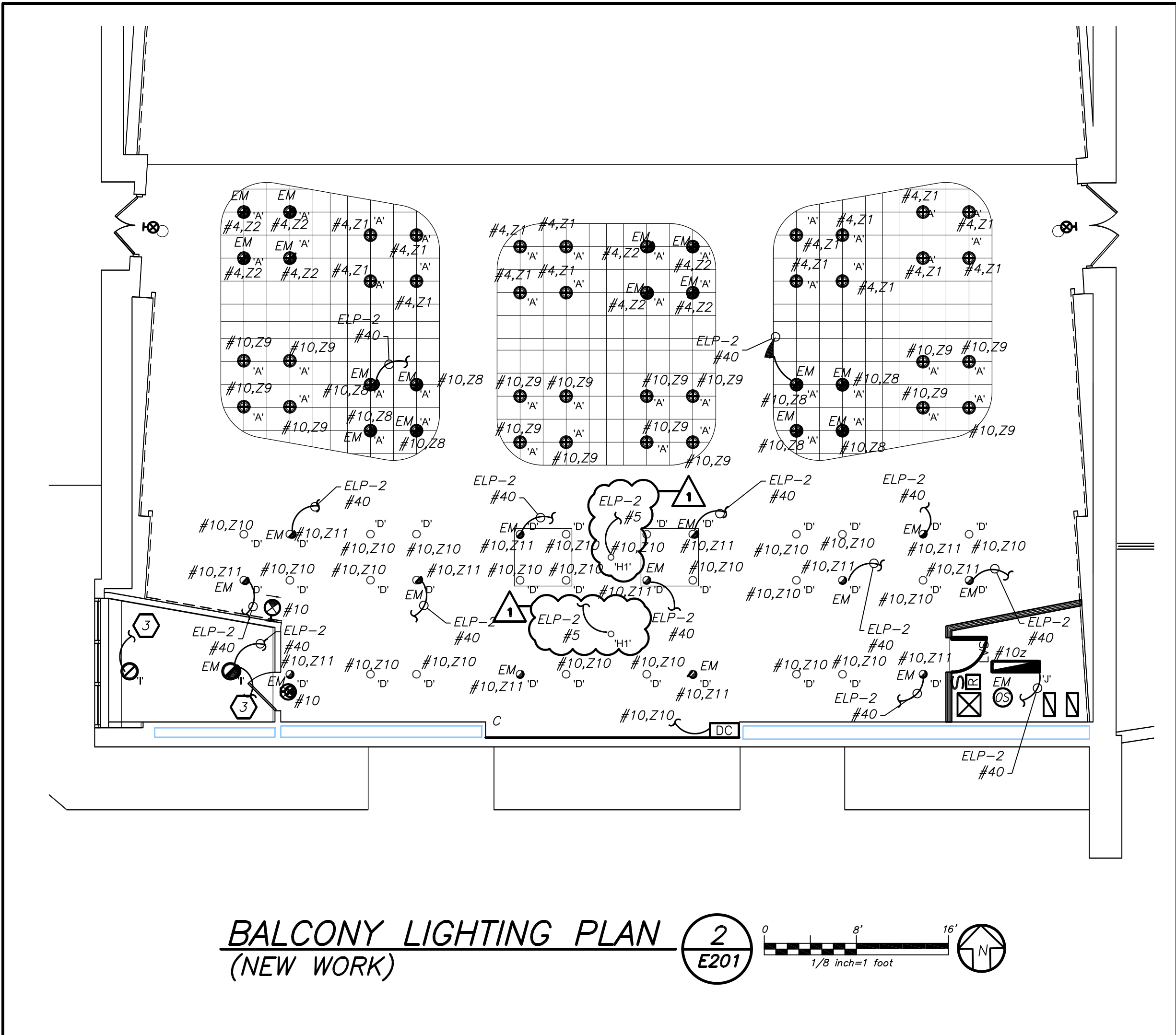
DRAWING E601 – ELECTRICAL SCHEDULES

Fixture Type ‘H’ **REVISE** description “Chair mounted aisle lighting with low voltage transformer.” to read “Chair mounted aisle light by chair manufacturer. Low voltage transformer, junction box and connection by E-Contractor.”.

Fixture Type ‘H1’ **DELETE** in its entirety and **ADD** “Type ‘H1’, ceiling recessed mounted, 14W LED, Recessed adjustable retrofit, Manufacturer: USAI Lighting, Model # LN10RART-WM-MTG2-14-27KS-10-10-RT10-120/277V-DIML2

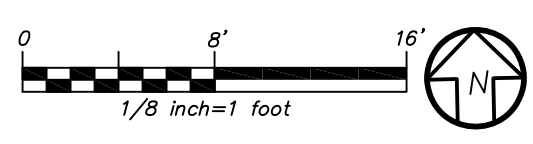
Lighting Transformer Schedule **DELETE** DH1.

END OF ADDENDUM NO. 1



BALCONY LIGHTING PLAN
(NEW WORK)

2
E201



AUDITORIUM DIMMING SCHEDULE LIGHT DIMMER PANEL: LP					
ZONE #	CIRCUIT #	AMP	LOCATION	LUMINAIRE TYPE	LOAD (VA)
1	PP-AUD-4	20	AUD-HOUSE-MAIN	LED	168
2	PP-AUD-4	20	AUD-HOUSE-MAIN	LED-EMERGENCY-RELAY UL924	100
3	PP-AUD-6	20	AUD-HOUSE-MAIN	LED	110
4	PP-AUD-6	20	AUD-HOUSE-MAIN	LED-EMERGENCY-RELAY UL924	400
5	PP-AUD-6	20	AUD-HOUSE-MAIN	LED	360
6	PP-AUD-4	20	AUD-HOUSE-MAIN	LED	364
7	PP-AUD-6	20	AUD-HOUSE-MAIN	LED-EMERGENCY-RELAY UL924	180
8	PP-AUD-10	20	AUD-HOUSE-BALC.	LED	48
9	PP-AUD-10	20	AUD-HOUSE-BALC.	LED	96
10	PP-AUD-10	20	AUD-HOUSE-BALC.	LED	756
11	PP-AUD-10	20	AUD-HOUSE-BALC.	LED-EMERGENCY-RELAY UL924	468
12	PP-AUD-16	20	SPARE	SPARE	
TOTAL					3,050

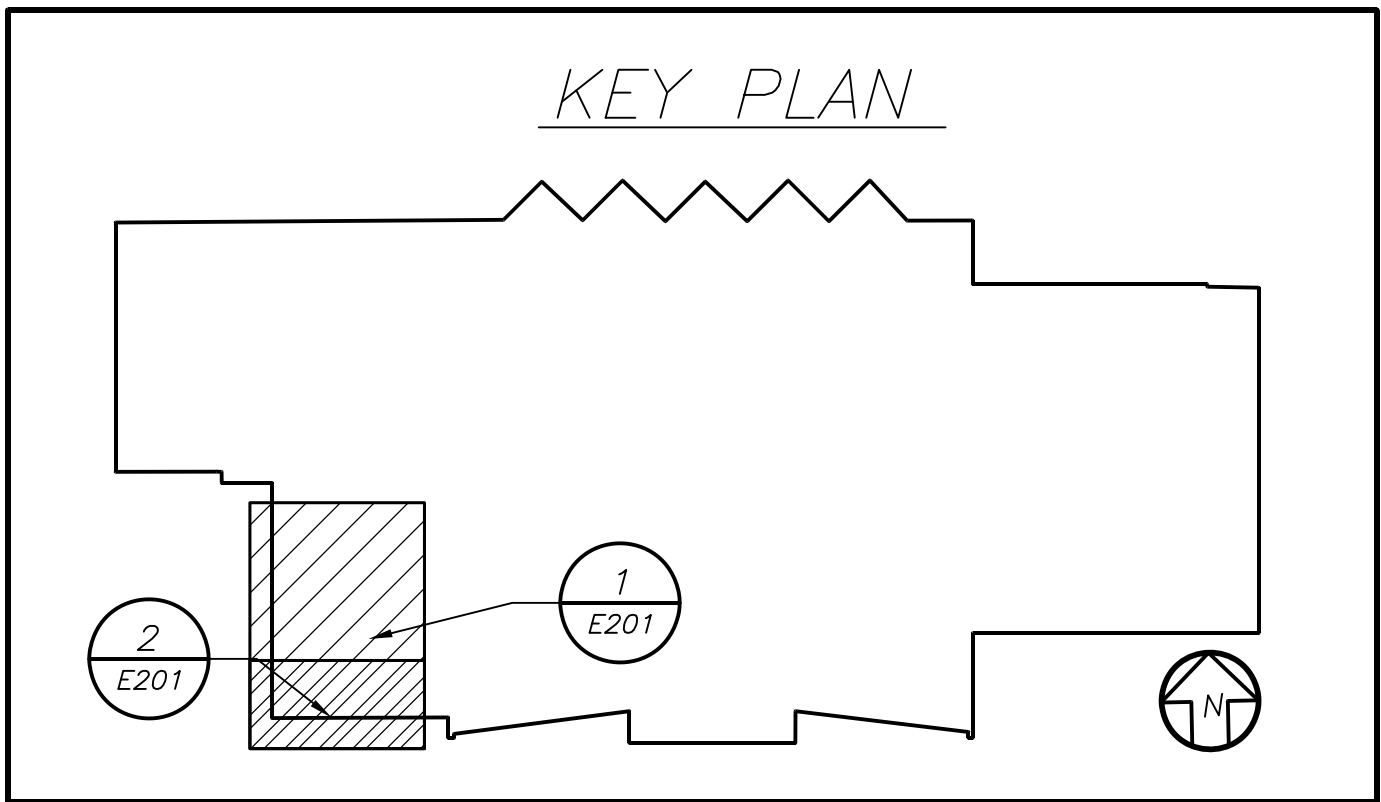
AUDITORIUM DIMMING
SCHEDULE

3
E201

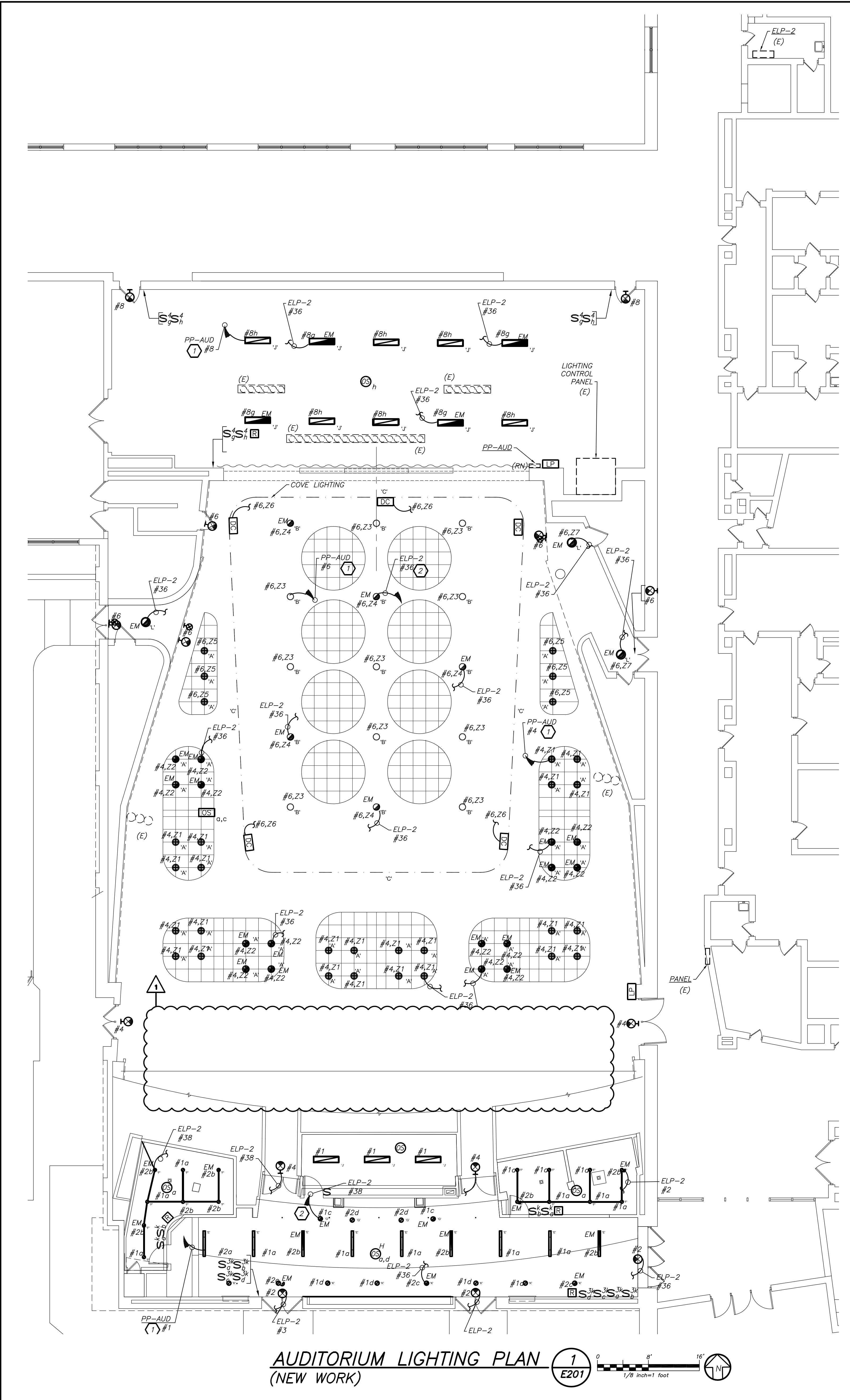
NO SCALE

WORK NOTES:

- CIRCUIT NUMBERS FOR CONTRACTOR GUIDANCE ONLY. PROVIDE 2#12+1#12G IN 3/4" CONDUIT TO CIRCUIT MADE SPARE BY DEMO WORK.
- EMERGENCY CIRCUIT NUMBER FOR CONTRACTOR GUIDANCE ONLY. PROVIDE 2#12+1#12G IN 3/4" CONDUIT TO NEARBY EMERGENCY LIGHTING CIRCUIT.
- WIRE NEW LIGHTING IN STAIRS TO EXISTING STAIR LIGHTING AND CONTROLS.

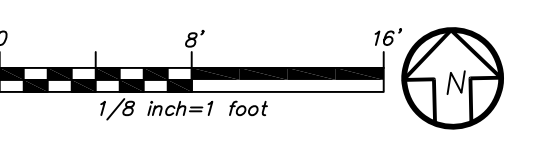


KEY PLAN



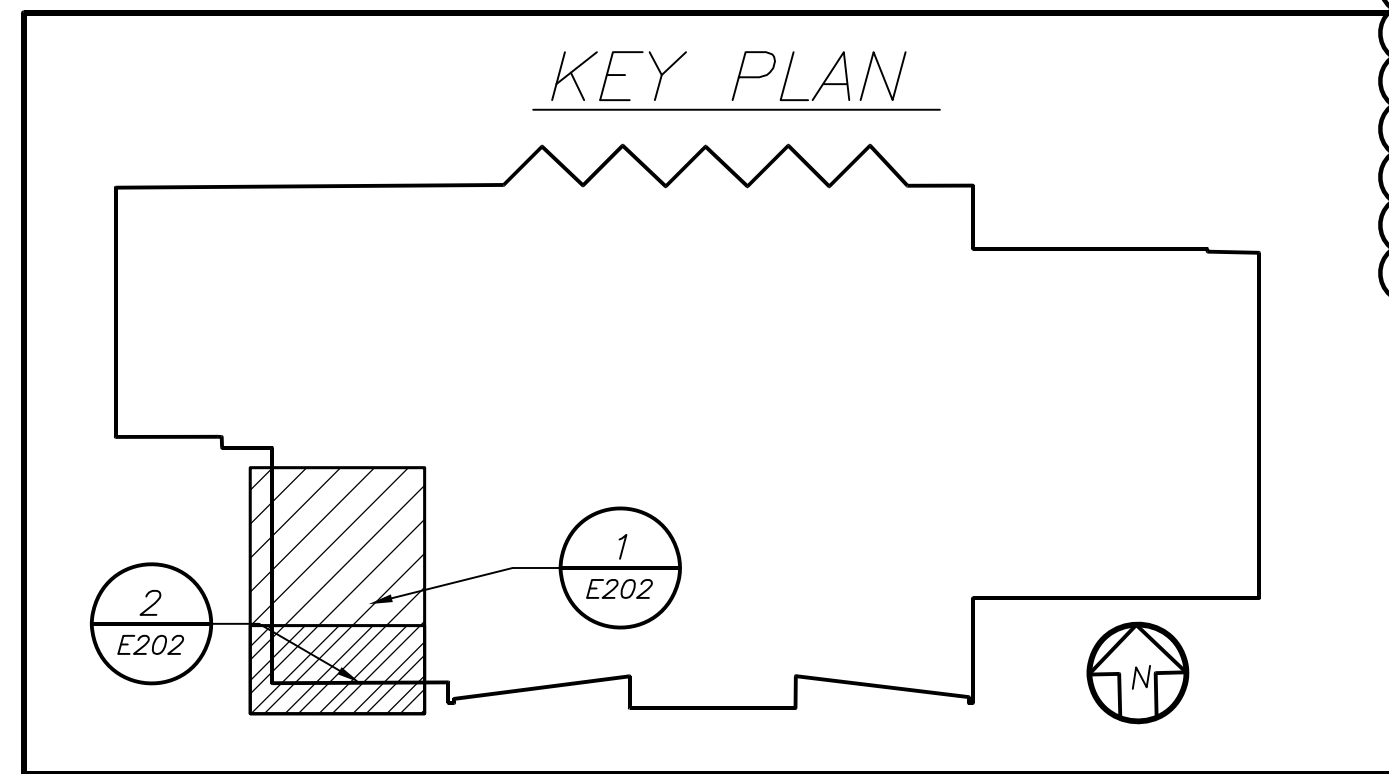
AUDITORIUM LIGHTING PLAN
(NEW WORK)

1
E201

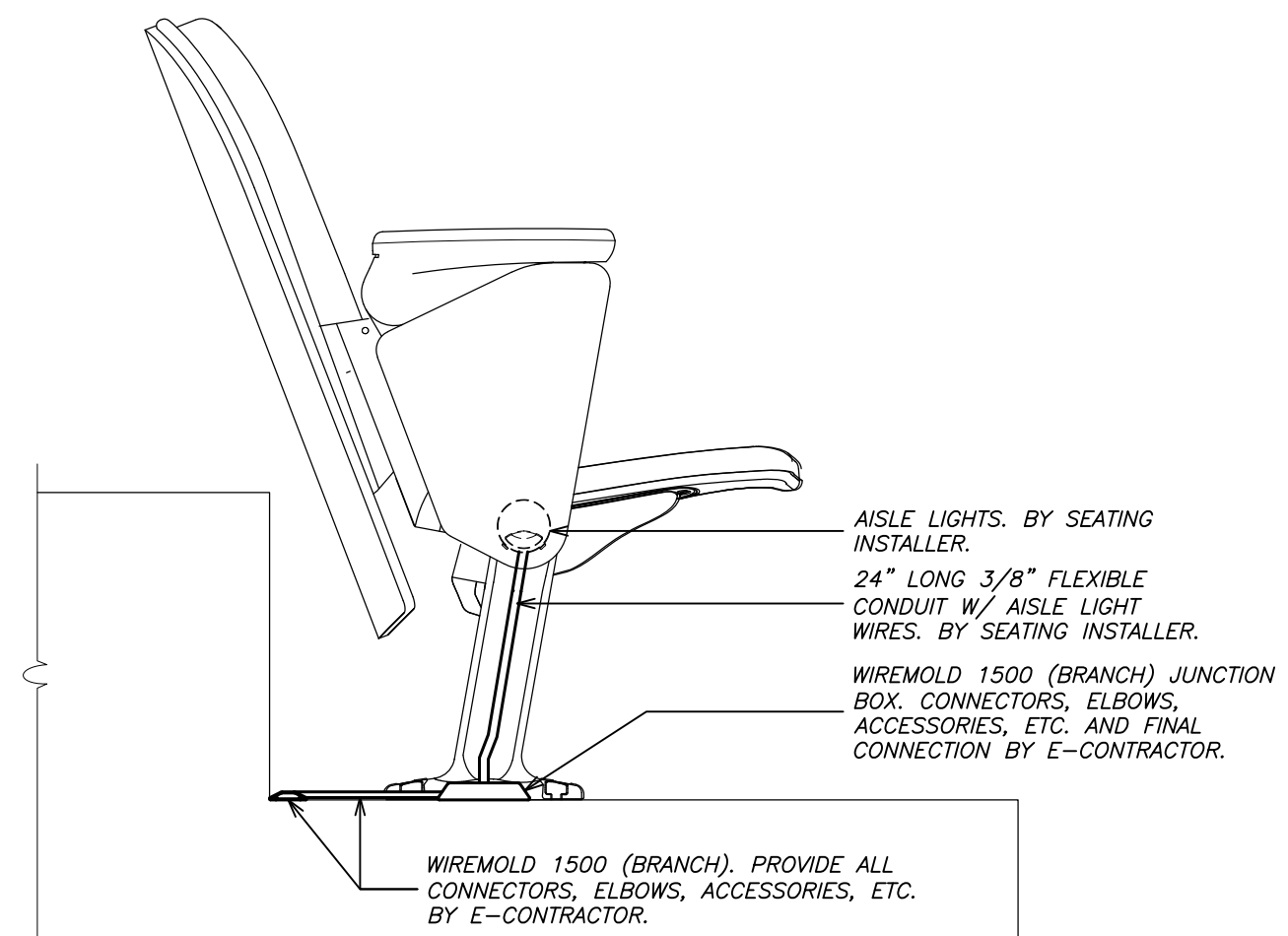


PLOT DATE: March 19, 2021 - 2:15pm

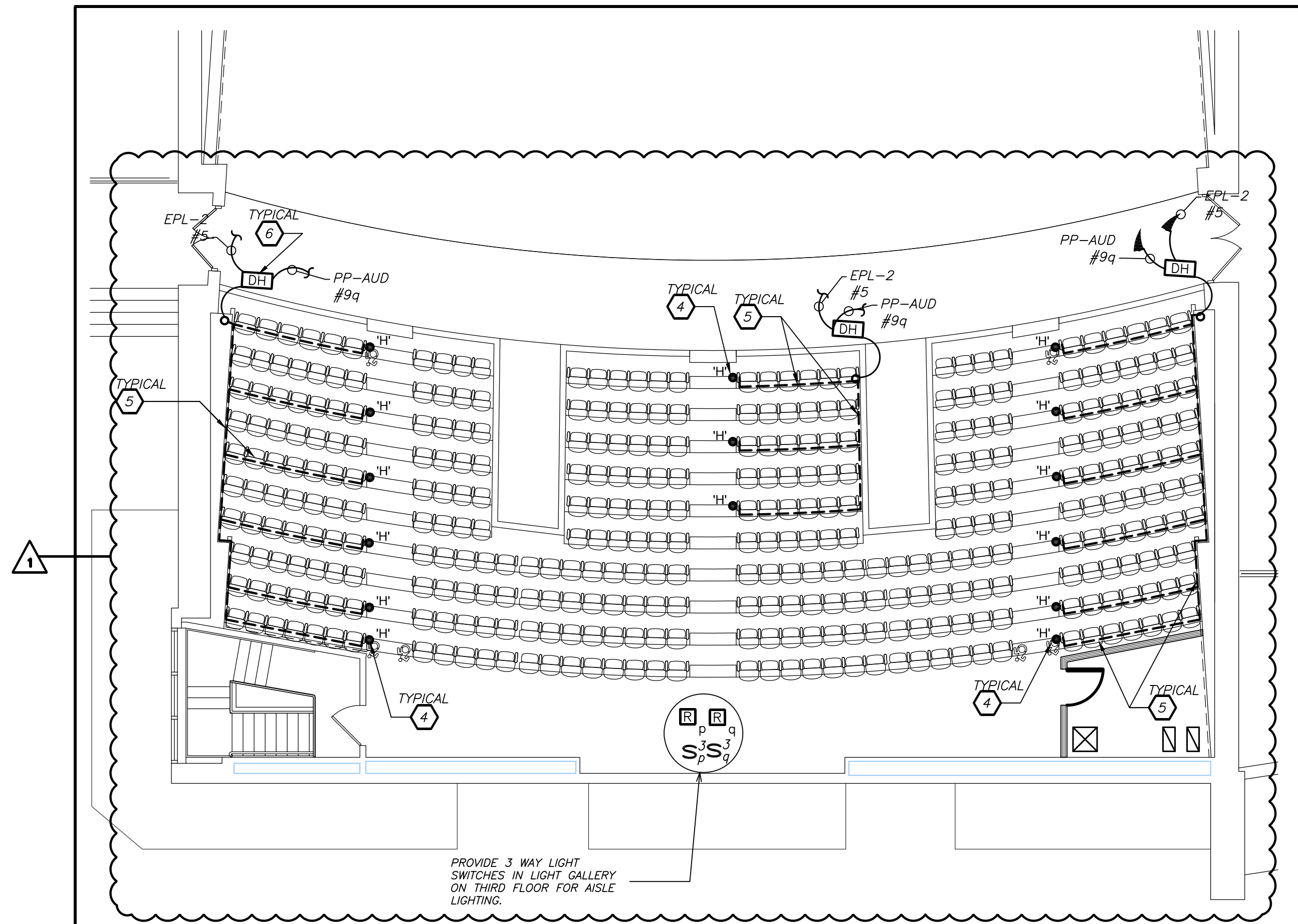
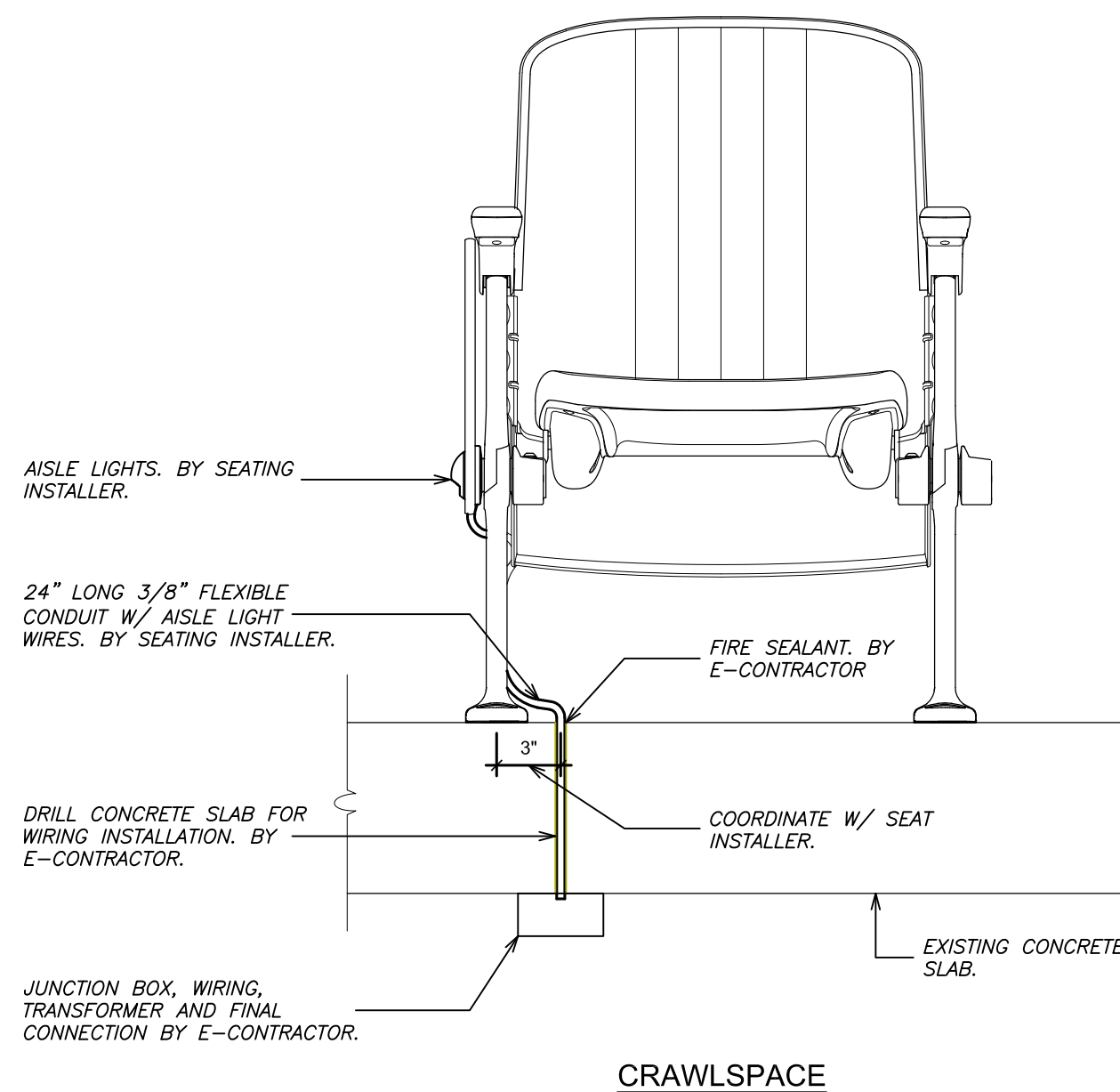
FILE: I:\19356.00 Yonkers Lincoln HS Auditorium\DRAWINGS\RECEIVED\BGA\2021-03-18 Aisle Lights\21-03-17 Aisle Lighting.dwg



BALCONY AISLE LIGHTING DETAIL (NEW WORK) **4** E201



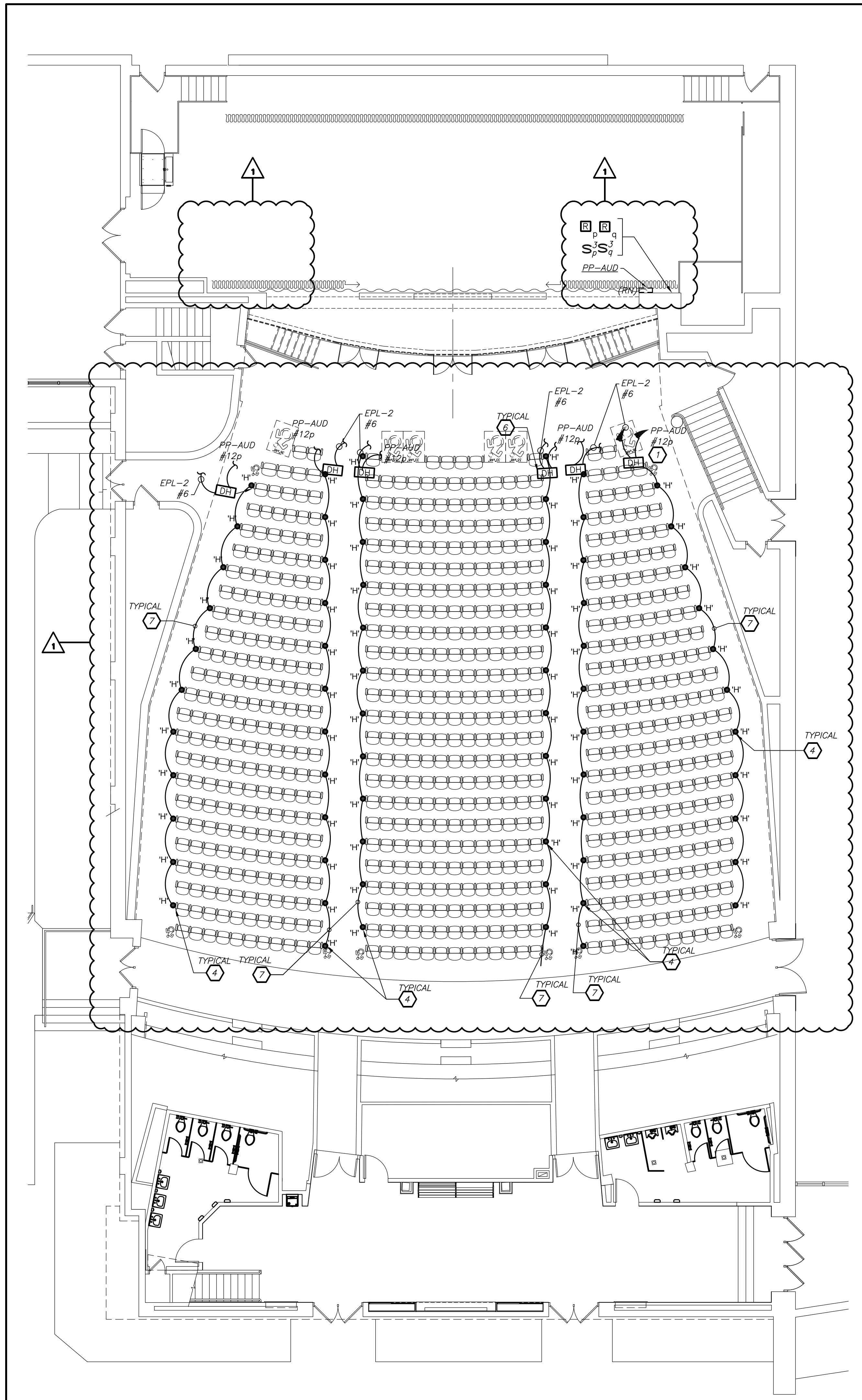
MAIN AISLE LIGHTING DETAIL (NEW WORK) **3** E201



BALCONY STEP LIGHTING PLAN (NEW WORK) **2** E201

WORK NOTES:

- 1 CIRCUIT NUMBERS FOR CONTRACTOR GUIDANCE ONLY. PROVIDE 2#12+1#12G IN 3/4" CONDUIT TO CIRCUIT MADE SPARE BY DEMO WORK.
- 2 NOT USED.
- 3 NOT USED.
- 4 AISLE LIGHTING AND 24" WHIP IS INTEGRAL PART OF AUDITORIUM SEAT BY OTHERS. FINAL CONNECTION, JUNCTION BOX, WIRING AND TRANSFORMER BY E-CONTRACTOR. COORDINATE WITH SEATING INSTALLER.
- 5 PROVIDE WIREMOLD 1500 (BRANCHES) & 2600 (MAINS) PANCAKE OVER FLOOR RACEWAY. PROVIDE ALL TRANSITION, CONNECTORS, ELBOWS, ACCESSORIES, ETC. FOR COMPLETE AND MINIMAL WALKING SURFACE INTERFERENCE INSTALLATION.
- 6 PROVIDE DRIVER AS SPECIFIED. REFER TO LEGEND AND LIGHTING FIXTURE SCHEDULE FOR MORE DETAIL. DRIVER SHALL BE LOCATED BELOW FLOOR SLAB IN CRAWL SPACE.
- 7 PROVIDE POKE THRU FROM CRAWL SPACE BELOW. COORDINATE LOCATION WITH SEAT INSTALLER.



AUDITORIUM AISLE LIGHTING PLAN (NEW WORK) **1** E202

AS PER USA CONGRESS ARCHITECTURAL WORKS COPYRIGHT PROTECTION ACT OF 1990 ALL IDEAS AND DESIGNS INCLUDING DERIVATIVES THEREOF, ALL DRAWINGS AND SPECIFICATIONS CONSTITUTE THE ORIGINAL COPYRIGHT WORK BY FULLER AND DANKELO, P.C. (F&D). THE DRAWINGS AND SPECIFICATIONS AS INSTRUMENTS OF SERVICE BY F&D ARE CREATED BY F&D FOR THIS PROJECT ONLY AND REMAIN THE PRODUCT AND PROPERTY OF F&D. ANY REPRODUCTION WITHOUT THE PRIOR CONSENT OF F&D IS PROHIBITED.

BARILE GALLAGHER & ASSOCIATES
CONSULTING ENGINEERS
39 MARBLE AVE. PLEASANTVILLE, NY 10570
914.328.6600 GENEAL@BGA-ENG.COM WWW.BGA-ENG.COM

FULLER DANKELO P.C.
ARCHITECTS PLANNERS
48 ENCLWOOD ROAD ELMSFORD NEW YORK 10523
TEL 914.898.4444 FAX 914.898.1917
www.fuller-dangelo.com Copyright 2021 All Rights Reserved by FULLER & DANKELO

S.E.D. CONTROL NUMBER:
66-23-00-01-0-202-015

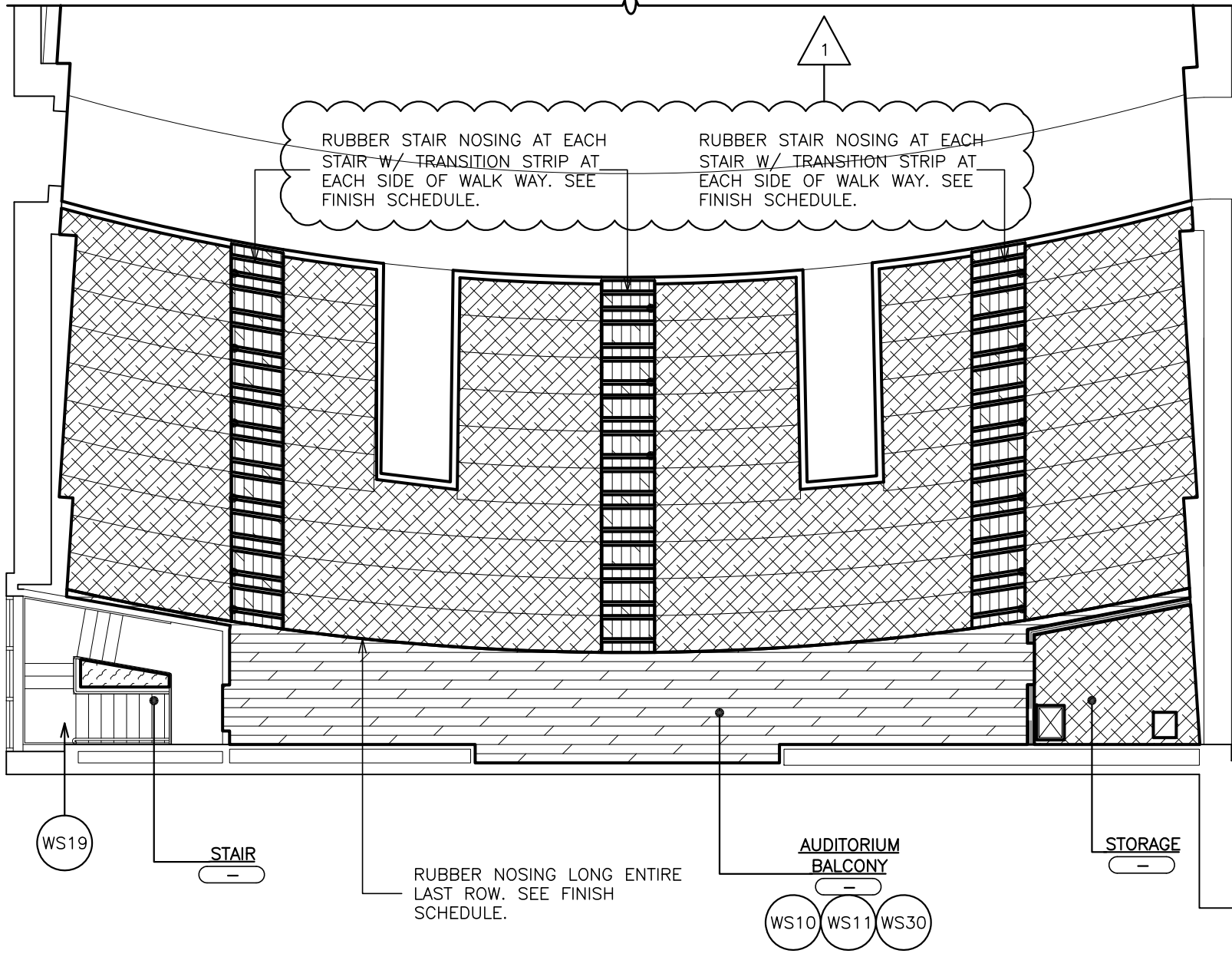
YPS JOB # 10873
YPS JOB # 10888

PROJECT NAME:
YONKERS SCHOOL DISTRICT
LINCOLN HIGH SCHOOL, 3rd & EXTERIOR
BLEACHER REPLACEMENT
375 KNEELAND AVENUE, YONKERS, NY 10704

DRAWING TITLE:
AUDITORIUM AISLE LIGHTING ELECTRICAL
PLAN

03-19-2021	ADDENDUM #1
02-12-2021	BID
04-09-2020	PROGRESS DRAWINGS
01-24-2020	SCHEMATIC DESIGN
DATE	ISSUED TO

SHEET SIZE 30"x42"	DRAWING NO. E202
SCALE AS NOTED	FILE NO. 19356.00
DRAWN BY F & D	



S.E.D. CONTROL NUMBER: 66-23-00-01-0-202-015

JOB NAME:		YONKERS SCHOOL DISTRICT LINCOLN HIGH SCHOOL AUDITORIUM UPGRADES & EXTERIOR BLEACHER REPLACEMENT	
375 KNEELAND AVENUE, YONKERS, NY 10704		DRAWING TITLE: AUDITORIUM BALCONY PLAN {REF. DWG. 2/A800}	
03-19-2021	DATE	ADDENDUM #1	ISSUED TO
SCALE:		AS NOTED	
19356.00		DRAWING NO.	
SK-A1.0		FILE NO.	

YPS JOB # 10873 YPS JOB # 10888	JOB NAME: YONKERS SCHOOL DISTRICT LINCOLN HIGH SCHOOL AUDITORIUM UPGRADES & EXTERIOR BLEACHER REPLACEMENT
------------------------------------	---

FULLER

D'ANGELO

P.C.

ARCHITECTS

PLANNERS

48 KNOXWOOD ROAD

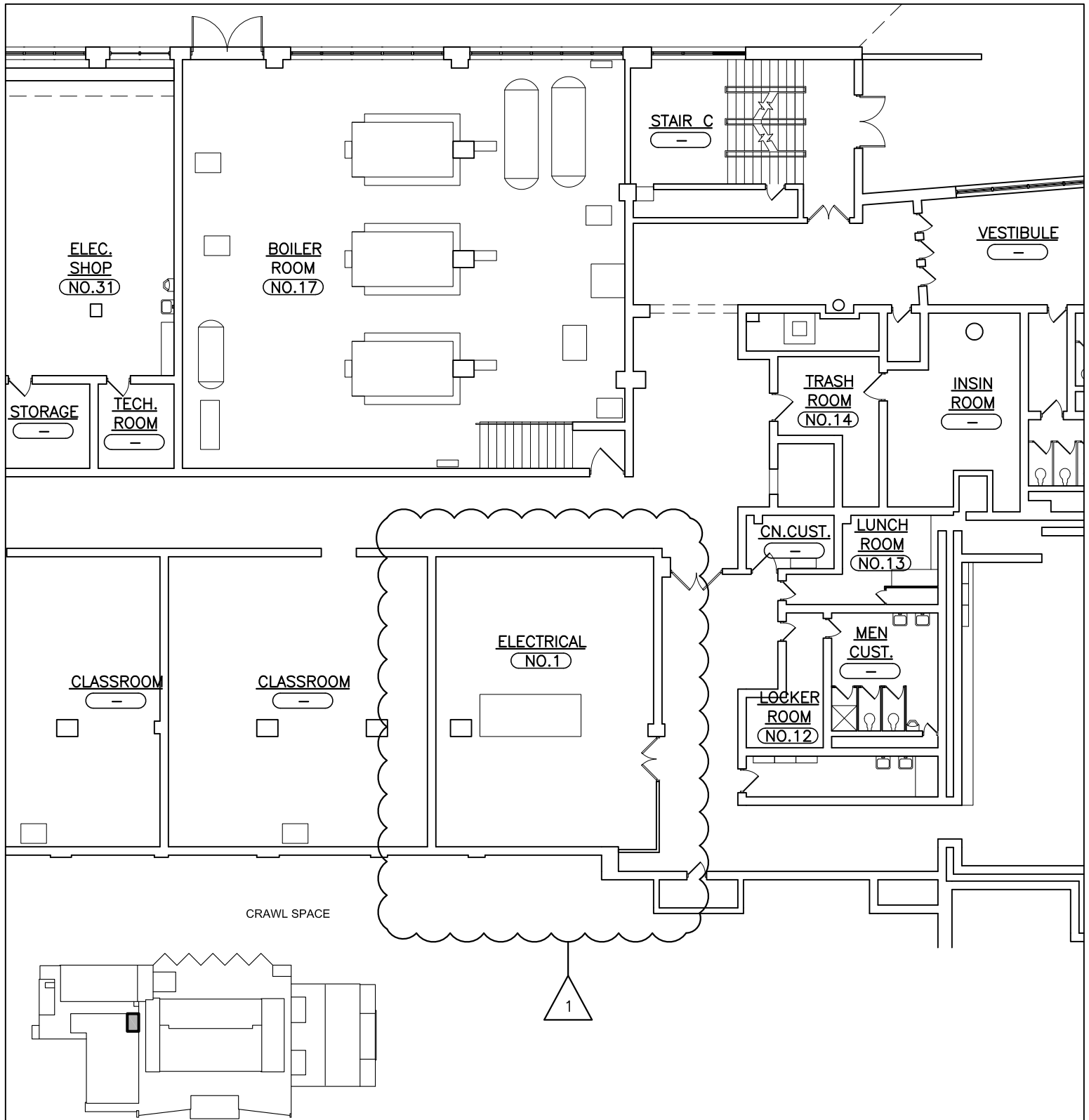
ELMSTADT NEW YORK 10823

TEL 914.392.4444

FAX 914.392.1717

WWW.FULLERDANGELO.COM

Copyright 2021 All Rights Reserved by FULLER & D'ANGELO P.C.



KEY PLAN 
SCALE N.T.S.

S.E.D. CONTROL NUMBER: 66-23-00-01-0-202-015

**FULLER
D'ANGELO
P.C.**

**ARCHITECTS
PLANNERS**

45 KNOLLWOOD ROAD ELMSFORD NEW YORK 10523
TEL 914.892.4444 FAX 914.892.1717
WWW.FULLERDANGELO.COM
Copyright 2021 All Rights Reserved by FULLER & D'ANGELO P.C.

YPS JOB # 10873
YPS JOB # 10888

JOB NAME:
YONKERS SCHOOL DISTRICT
LINCOLN HIGH SCHOOL
AUDITORIUM UPGRADES & EXTERIOR BLEACHER
REPLACEMENT
375 KNEELAND AVENUE, YONKERS, NY 10704

DRAWING TITLE:
PARTIAL BASEMENT FLOOR
ELECTRICAL ROOM LOCATION

03-19-2021 ADDENDUM #1

DATE ISSUED TO

SCALE: AS NOTED

FILE NO. 19356.00
DRAWING NO. SK-E1.0