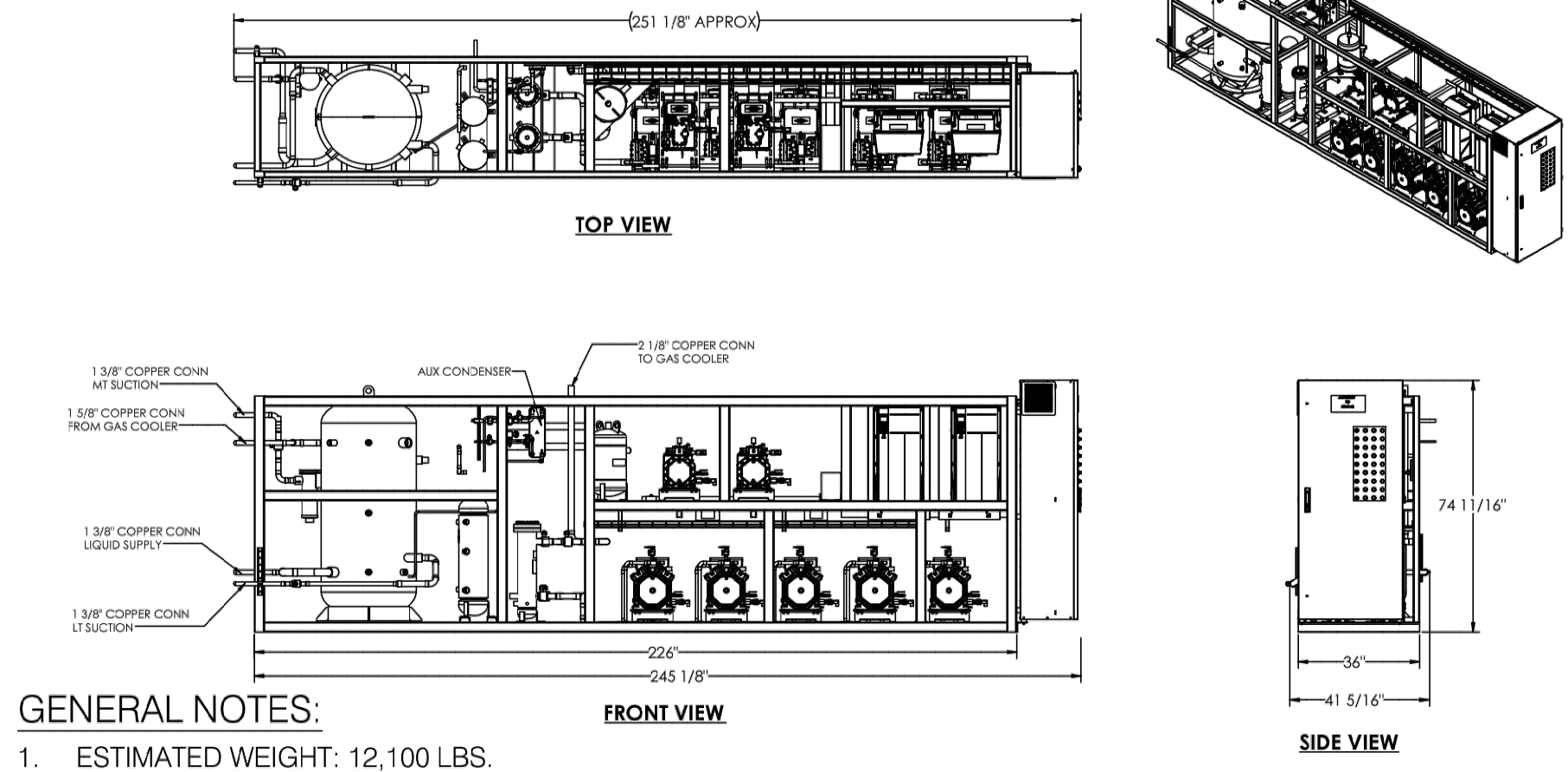


C:\Users\jcalderon\OneDrive\Documents\252411923-AC-Hill-awg - Pinned on Mar 03, 2021 12:04pm by station1
C:\Users\jcalderon\OneDrive\Documents\252411923-AC-Hill-awg - Pinned on Mar 03, 2021 12:04pm by station1
Sheet File Save Date: 03 Mar 2021 12:25pm

PIPING SHOWN HERE JUST FOR REFERENCE ONLY. REFER TO MECH DRAWING FOR PIPING AND COMPONENTS.



GENERAL NOTES:
1. ESTIMATED WEIGHT: 12,100 LBS.

HILL PHOENIX BOOSTER RACK OUTLINE

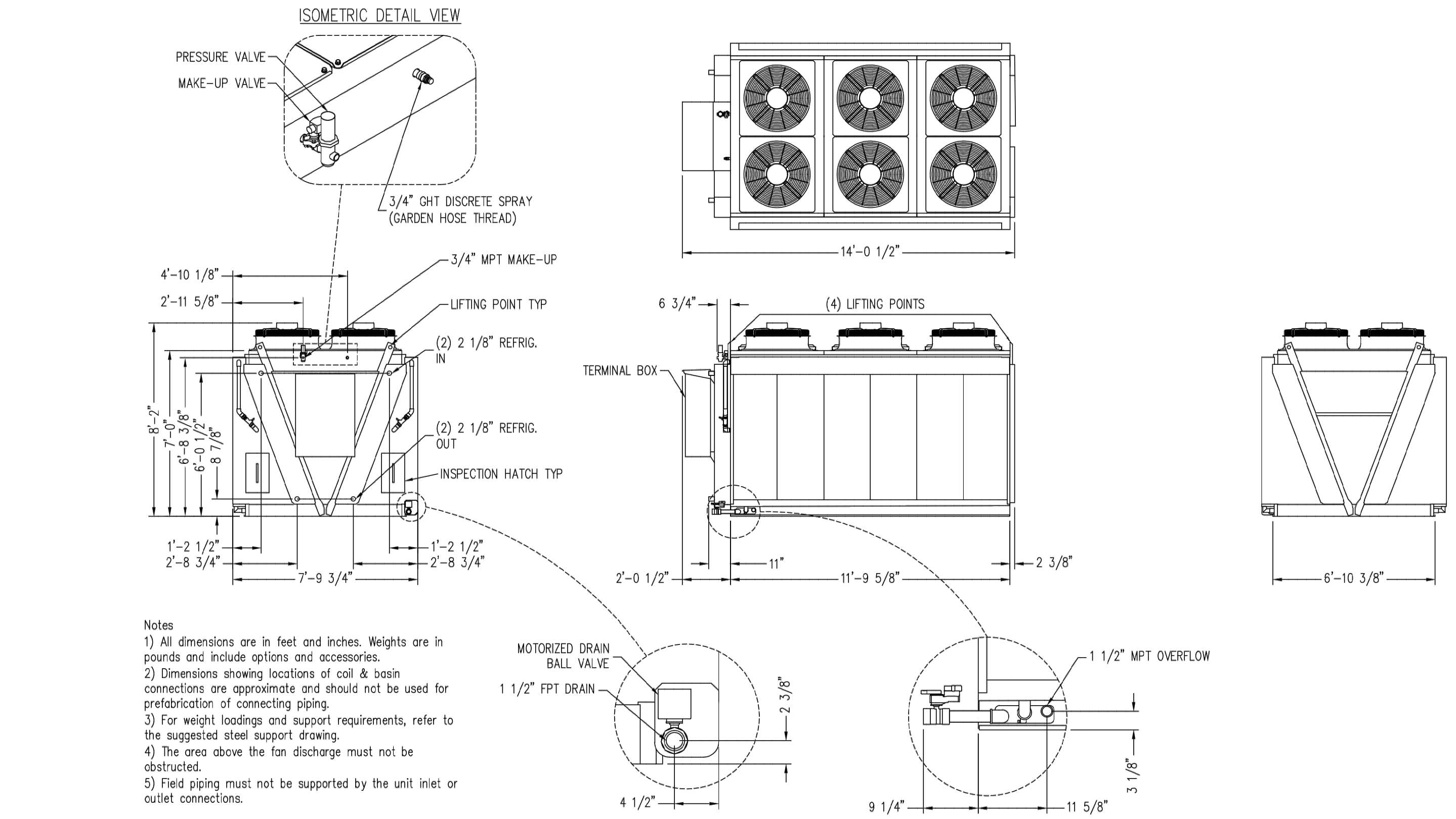
2019© Baltimore Aircoil Company. All Rights Reserved.

NOT TO SCALE

RAINHOOD DETAIL

NOT TO SCALE

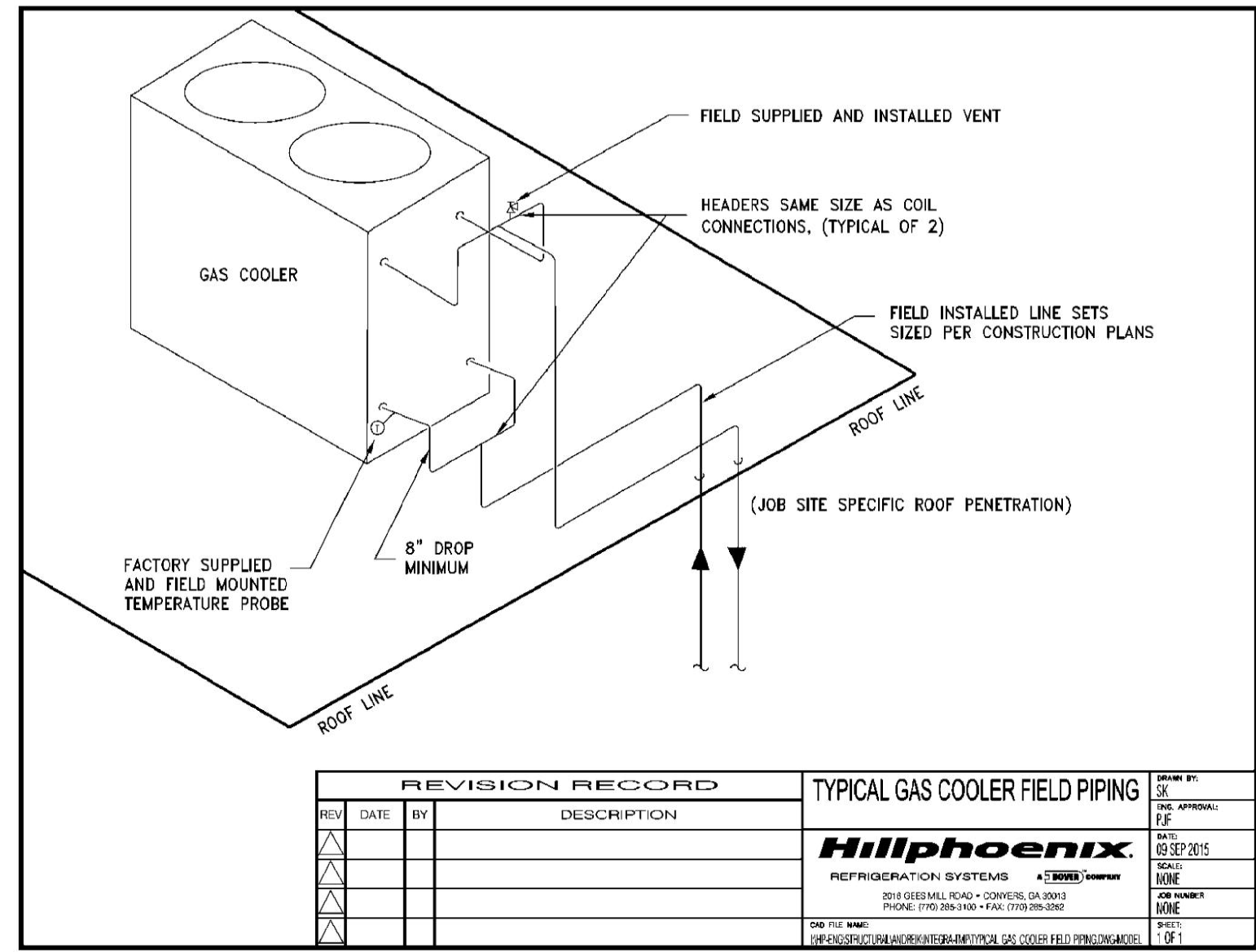
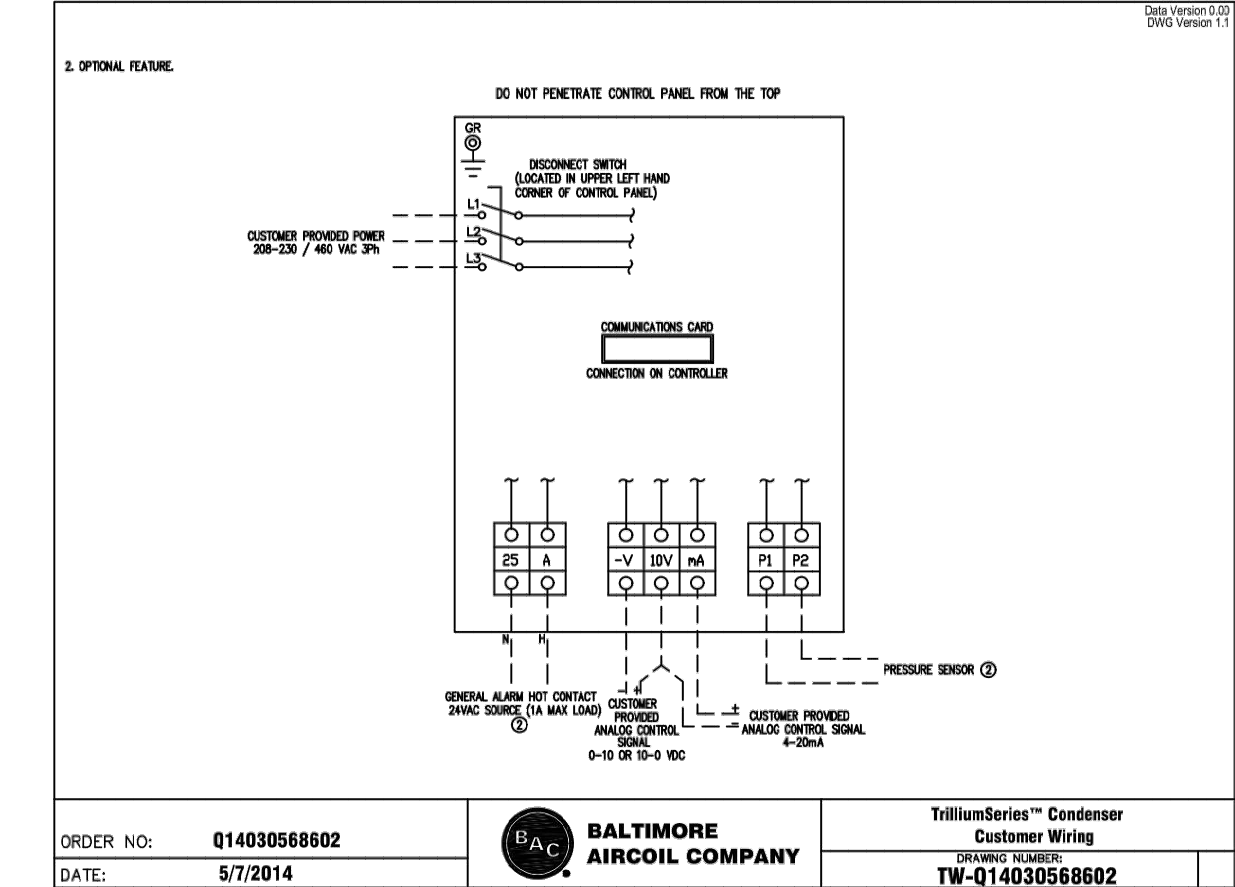
NOTE:
1. CURBED OPENING, CANT, FLASHING AND ROOFING BY GENERAL CONTRACTOR.
2. REMOVABLE HOOD WITH BIRD SCREEN BY GENERAL CONTRACTOR.



Model Number	Shipping/Rigging Weight	Operating Weight
TSDC2-C02-297-18.6	6028	6710

BAC TRILLIUM SERIES CONDENSER
BAC MODEL: TSDC2

NOT TO SCALE



REV	DATE	BY	DESCRIPTION
1			
2			
3			
4			
5			

Typical Gas Cooler Field Piping

Hillphoenix
REFRIGERATION SYSTEMS
10000 Hillphoenix Drive, Suite 100
Houston, TX 77060-1000
Phone: 281.766.7000 Fax: 281.766.7001
www.hillphoenix.com

TRILLIUM SERIES CO2 GAS COOLER CONTROL

NOT TO SCALE

GAS COOLER TO RECEIVER
TYPICAL REFRIGERATION PIPING

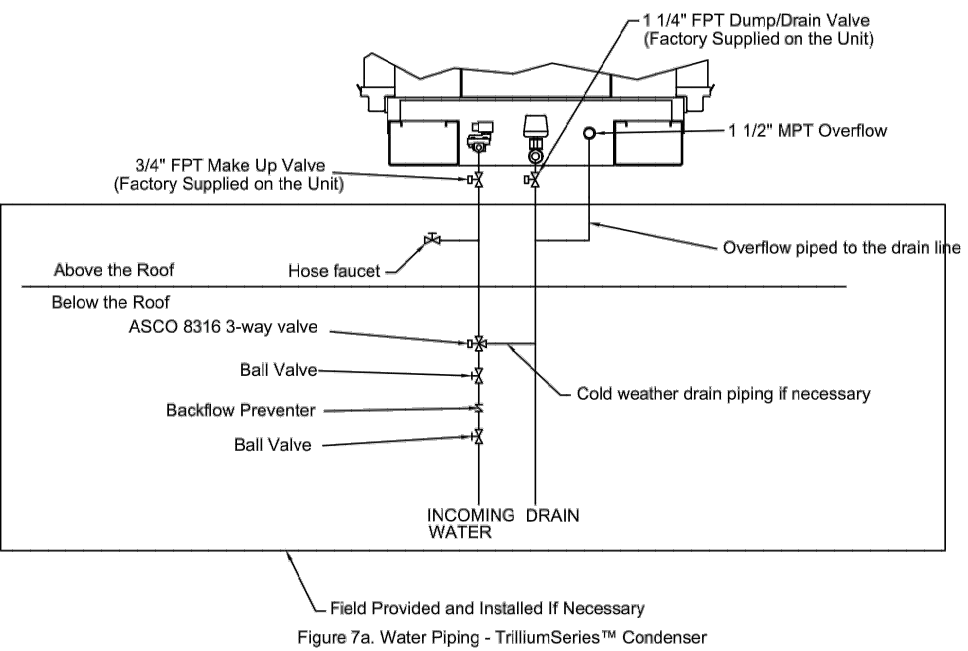
NOT TO SCALE

FOR REFERENCE ONLY. SEE BAC MANUAL FOR DETAILS

Winter Operation

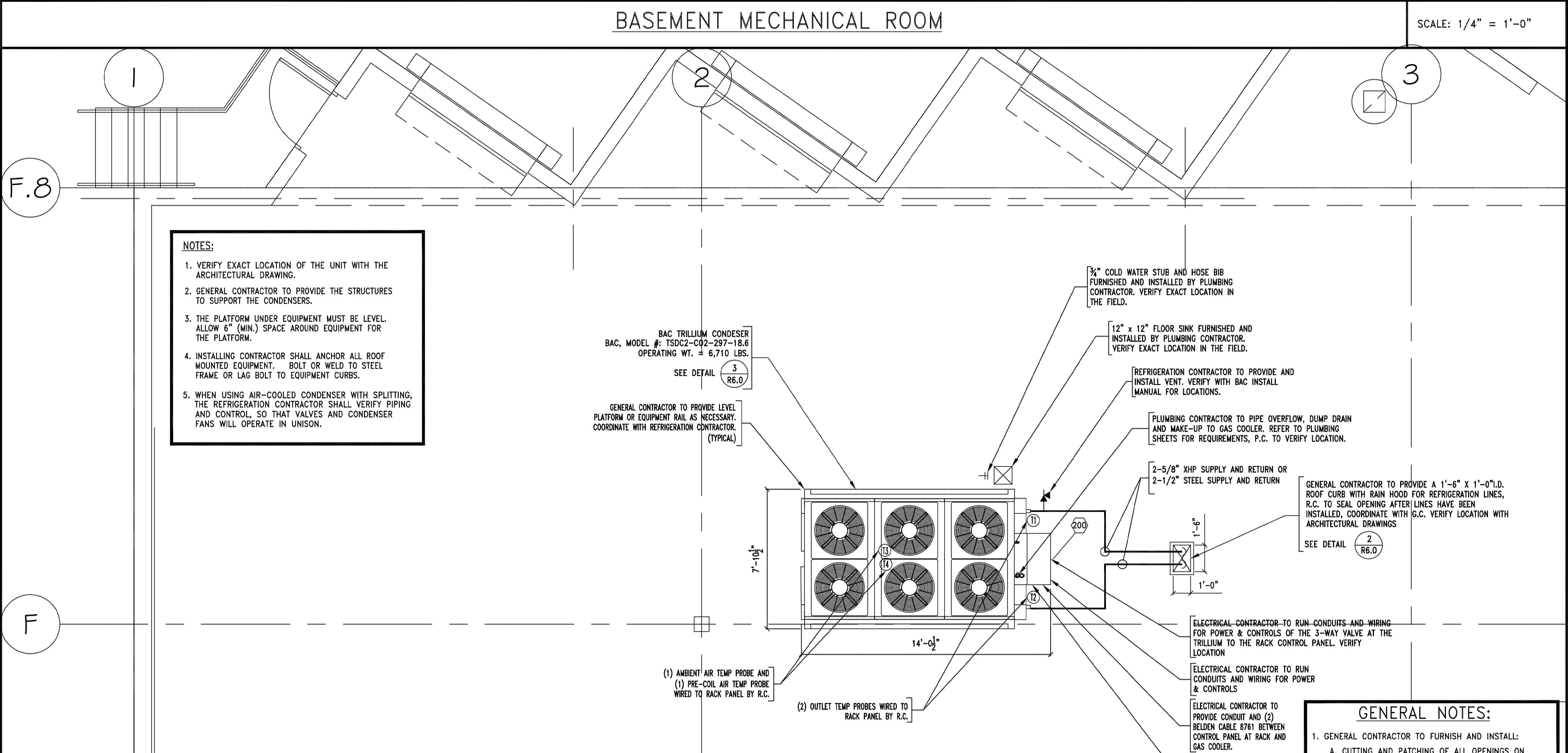
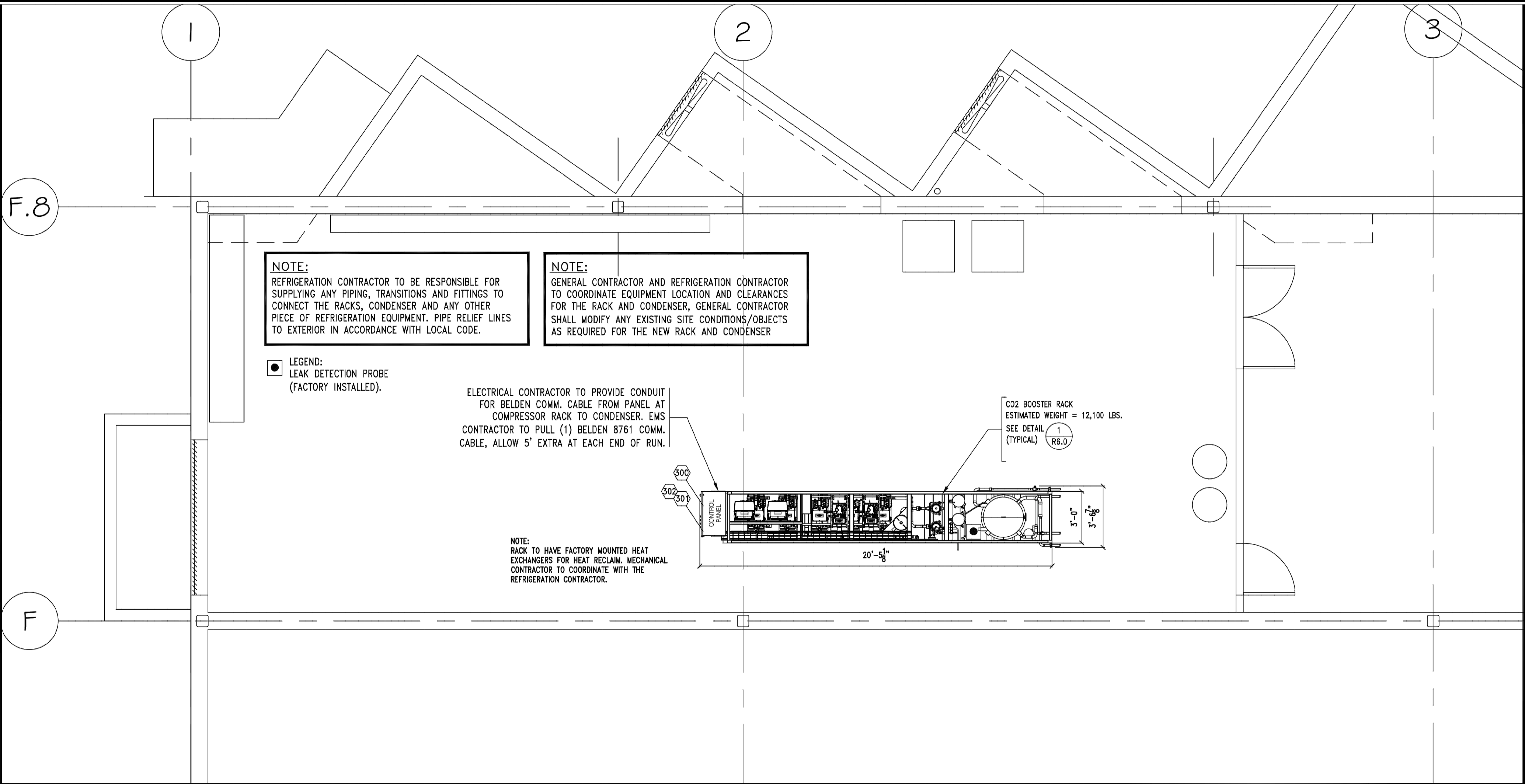
When the unit is in dry mode, the unit completely drains with no standing water. During winter operation, the EcoFlex Controls automatically disables Pre-Cool Mode when ambient temperature is below 40°F (4.4°C). Turn off the water to the unit and drain all exposed external piping, including pump piping, when below freezing temperatures are expected. Customers in climates that reach below freezing temperatures should take necessary precaution to protect the water pipes from freezing. This may include installing a valve to prevent standing water in the pipes (provided by others). Heat trace all exposed make-up water lines if the water cannot be shutoff and/or external piping cannot be drained.

NOTES:
1. Only valves labeled factory supplied are provided with the unit.
2. Optional hose faucet connection and 3-way valve shown.
3. Backflow prevention should be installed per local and national codes.



TRILLIUM WATER PIPING DETAIL

NOT TO SCALE



PIPING JOINING:

CONDENSER LINES:

TIG WELDED, 3 PASS BY CERTIFIED WELDER IN ACCORDANCE WITH LOCAL CODE. CARBON STEEL PER ASTM A106 OR ANSI/ASME B36.10 OR STAINLESS STEEL PER ASTM A312 OR ANSI/ASME B36.19 BUTT WELDED OR SOCKET WELD CONNECTION ARE ACCEPTABLE. ALL STEEL PIPING TO/FROM THE GAS COOLER TO BE PAINTED USING PPG SPECTRACON 390-UV 2K HS EXTERIOR ACRYLIC POLYURETHANE.

OPTIONAL:

INSTALLING CONTRACTOR MAY USE MUELLER XHP OR WIELAND K65 HIGH PRESSURE COPPER FOR THE DISCHARGE AND DRAIN LINE FROM THE RACK TO THE CONDENSER. STANDARD BRAZING METHODS TO BE USED (15% SILVER SOLDER ON JOINING COPPER TO COPPER AND 45% SILVER SOLDER ON JOINING COPPER TO STEEL).

NOTE: REFRIGERATION CONTRACTOR TO SUPPLY AND INSTALL COPPER TO STEEL TRANSITION FITTINGS IN THE EVENT STEEL PIPING IS BEING USED FOR INSTALLATION OF THE HIGH SIDE PIPING.

NOTE: ALL STEEL/STAINLESS STEEL PIPING IS TO BE CLEANED THOROUGHLY INSIDE TO REMOVE ALL RUST, SCALE, OIL AND OTHER DETRIMENTAL CONTAMINANTS TO THE REFRIGERATION SYSTEM. IF SAND BLASTING IS THE METHOD USED TO CLEAN THE PIPE BE SURE ALL SAND IS REMOVED FROM THE PIPING PRIOR TO INSTALLATION

OPTIONAL: INSTALLING CONTRACTOR MAY USE MUELLER XHP OR WIELAND K65 HIGH PRESSURE COPPER FOR THE DISCHARGE AND DRAIN LINE FROM THE RACK TO THE CONDENSER. STANDARD BRAZING METHODS TO BE USED (15% SILVER SOLDER ON JOINING COPPER TO COPPER AND 45% SILVER SOLDER ON JOINING COPPER TO STEEL).

SYMBOL LEGEND

(ALL SYMBOLS MAY NOT APPLY TO THIS PROJECT)
--- REFRIGERATION LINES
--- HEAT RECLAIM WATER LINES
TEMPERATURE PROBE WIRED TO CONTROL PANEL OF COMPRESSOR RACK USING TWO (2) CONDUCTORS. (LOW VOLTAGE)

TRILLIUM NOTES:

- THE TRILLIUMSERIES™ CONDENSER REQUIRES A WATER SUPPLY BETWEEN 35 AND 55 PSI IN A 3/4" PIPE AT THE UNITS' INLET. IF YOUR BUILDING'S PRESSURE IS NOT IN THIS PSI RANGE, IT IS RECOMMENDED TO USE A PRESSURE REDUCING VALVE.
- PLUMBING CONTRACTOR TO REFER TO THE BAC INSTALLATION MANUAL FOR ALL WATER SUPPLY AND DRAIN PIPING REQUIREMENTS.
- PLUMBING CONTRACTOR TO PROVIDE AND INSTALL A 3-WAY VALVE, HEAT TAPE AND INSULATION FOR THE WATER LINES. VERIFY WITH BAC INSTALL MANUAL.

NOTE TO CONTRACTORS:

IT IS THE RESPONSIBILITY OF EACH CONTRACTOR TO OBTAIN AND USE THE LATEST PLANS. ARCTIC COOLING SYSTEMS WILL NOT BE RESPONSIBLE ANY CONSTRUCTION WORK PERFORMED WITH OBSOLETE PLANS.

REVISIONS:

ARCTIC COOLING SYSTEMS
14350 CHEROKEE PL
CHINO, CA 91710
Phone: 909-270-2111

SEAL:

ADAMS FAIRACRE FARMS
NYS Route 211
Middletown, NY

PROJECT NAME:

MECHANICAL
EQUIPMENT PLAN

SCALE: AS NOTED
DRAWN BY: AARON PEREZ
CHECKED BY: ---

DRAWING TITLE:

Plan B Retail Design & Project Management, LLC
12 Goose Lane, Tolland, CT 06084
Tel: 860.870.5380 Fax: 860.870.5382
e-mail: cbm@planbretail.com

PLAN B RETAIL DESIGN

DATE: FEBRUARY 22, 2021
PROJECT NO: 1923
SHEET NO: R6.0