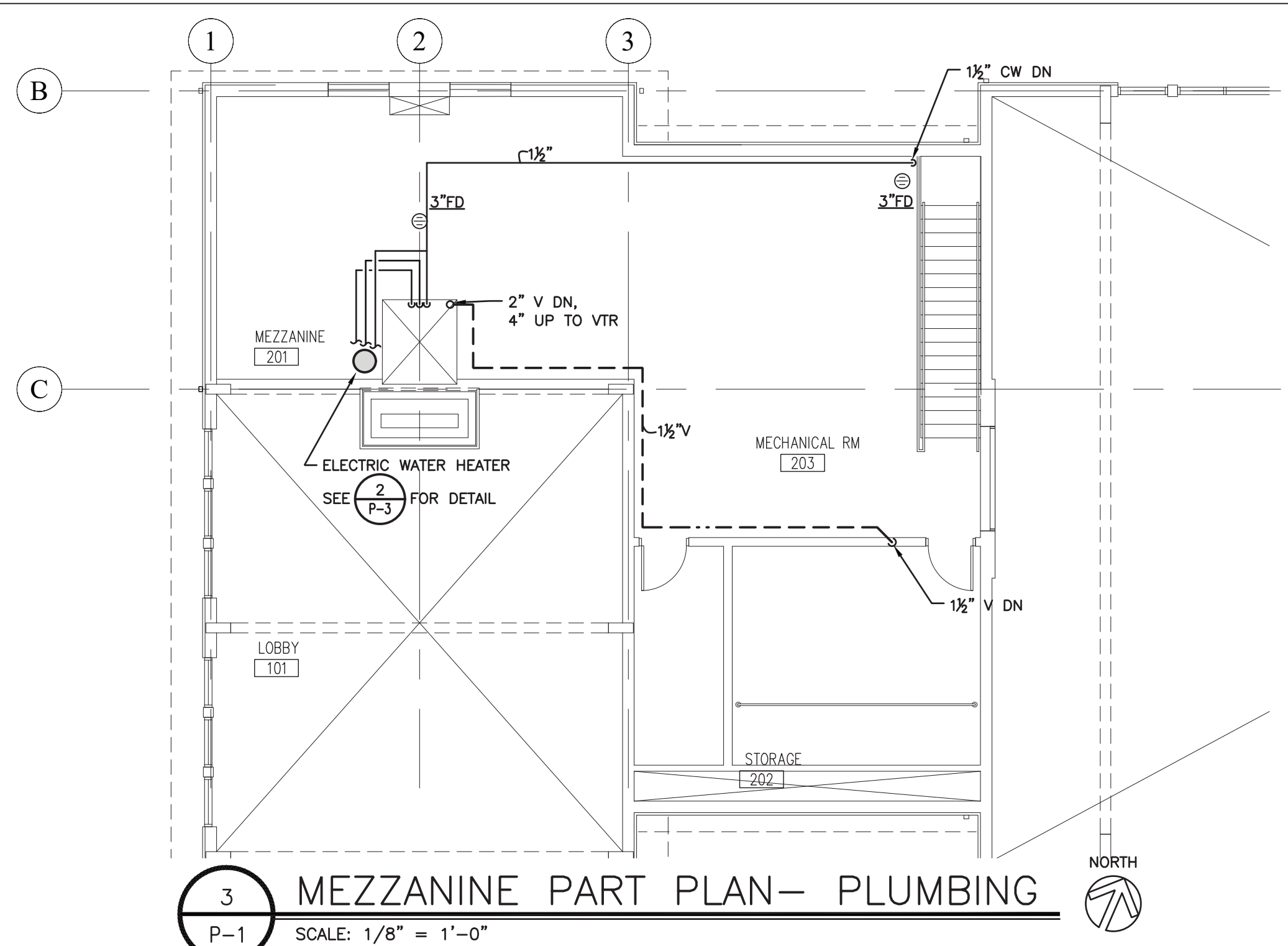


**2 FIRST FLOOR ENLARGED PART PLAN- PLUMBING**  
 SCALE: 1/4" = 1'-0" NORTH



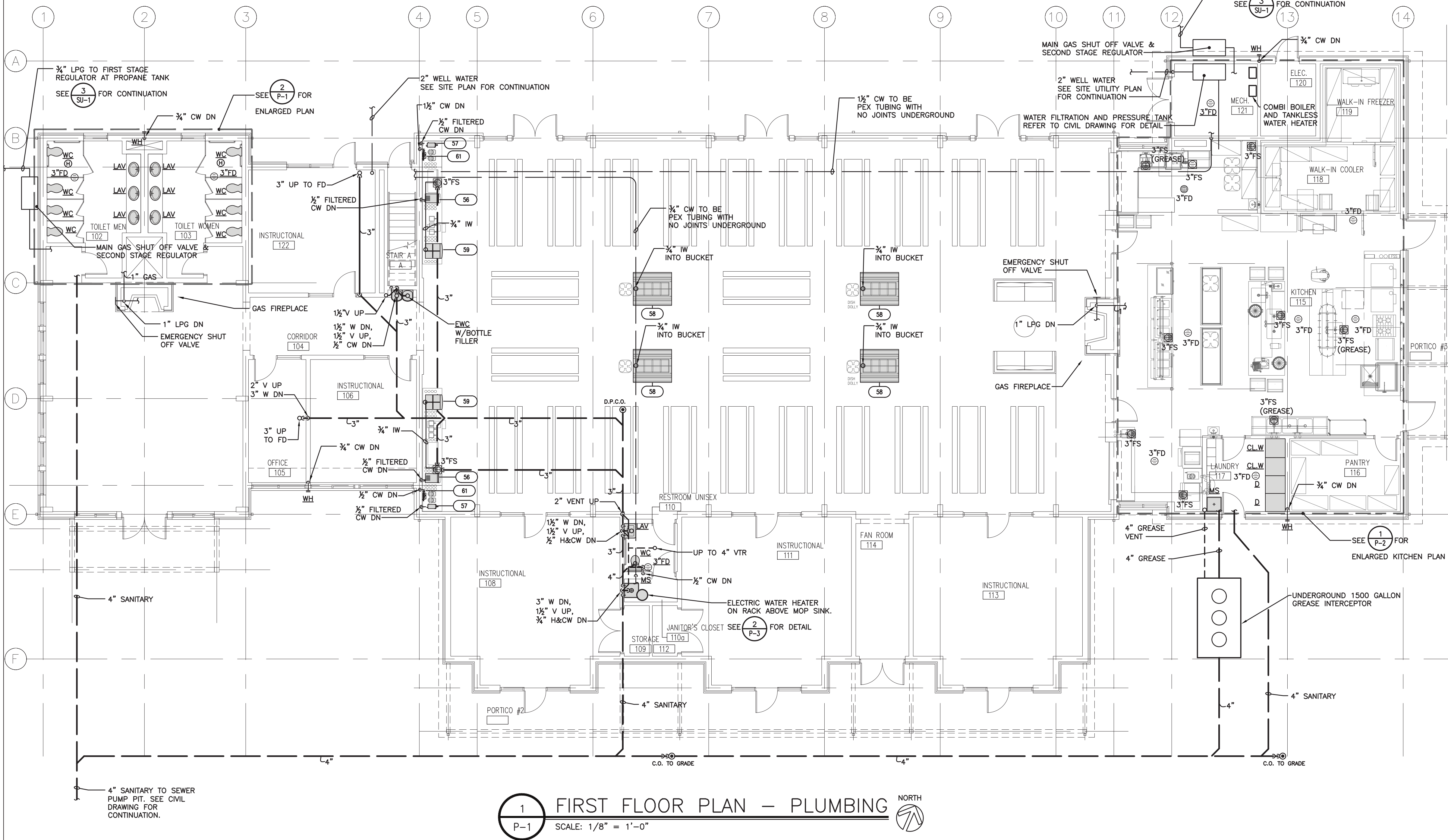
**3 MEZZANINE PART PLAN- PLUMBING**  
 SCALE: 1/8" = 1'-0" NORTH

| SCHEDULE OF MINIMUM FIXTURE CONNECTIONS |             |        |        |          |          |        |
|---|-------------|--------|--------|----------|----------|--------|
| FIXTURE                                 | DESIGNATION | WASTE  | VENT   | H.W 110' | H.W 140' | C.W    |
| WATER CLOSET                            | W.C.        | 4"     | 2"     | -        | -        | 1 1/4" |
| WATER CLOSET                            | W.C.        | 4"     | 2"     | -        | -        | 1/2"   |
| LAVATORY                                | LAV.        | 1 1/2" | 1 1/2" | 1/2"     | -        | 1/2"   |
| MOP SINK                                | M.S.        | 3"     | 1 1/2" | 3/4"     | -        | 3/4"   |
| ELECTRIC WATER COOLER                   | E.W.C.      | 1 1/2" | 1 1/2" | -        | -        | 1/2"   |

NOTE: EACH HOT & COLD WATER SUPPLY TO EACH FIXTURE SHALL BE INDIVIDUALLY VALVED.  
 Δ = TANK TYPE  
 Φ = PROVIDE WITH SHOCK ARRESTORS

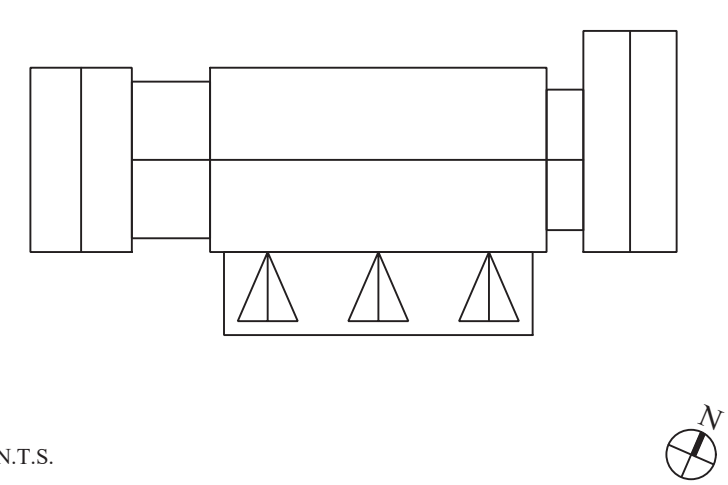
| PLUMBING LEGEND |   |
|-----------------|---|
| SYMBOL          | DESCRIPTION                             |
| —               | ABOVE GROUND SOIL AND/OR WASTE PIPING   |
| ---             | UNDERGROUND SOIL AND/OR WASTE PIPING    |
| ----            | VENT PIPING                             |
| -----           | COLD WATER PIPING                       |
| -----           | HOT WATER PIPING (110')                 |
| -----           | HOT WATER PIPING (140')                 |
| -----           | HOT WATER RECIRCULATING PIPING (H.W.R.) |
| G               | GAS PIPING (G.)                         |
| +               | SHUT-OFF VALVE                          |
| +               | GLOBE VALVE                             |
| +               | CHECK VALVE                             |
| +               | GAS SHUT-OFF VALVE                      |
| +               | CLEANOUT (C.O.)                         |
| +               | DECK PLATE CLEANOUT (D.P.C.O.)          |
| +               | UNION                                   |
| +               | SHOCK ARRESTOR                          |
| +               | HANDICAPPED FACILITY                    |
| +               | NEW CONNECTION TO EXISTING FACILITY     |
| +               | SQUARE FEET                             |
| +               | PLUMBING STACK No. 1                    |
| +               | DETAIL No. 1, DRAWING P-1               |

| ABBREVIATIONS |                         |
|---------------|-------------------------|
| SYMBOL        | DESCRIPTION             |
| AFF           | ABOVE FINISHED FLOOR    |
| AFG           | ABOVE FINISHED GRADE    |
| BFP           | BACK FLOW PREVENTER     |
| BWV           | BACK WATER VALVE        |
| CLG           | CEILING                 |
| CO            | CLEAN OUT               |
| CW            | COLD WATER              |
| DN            | DOWN                    |
| DPCO          | DECK PLATE CLEAN OUT    |
| FAI           | FRESH AIR INLET         |
| FD            | FLOOR DRAIN             |
| FU            | FIXTURE UNIT            |
| HB            | HOSE BIBB (18" A.F.F.)  |
| HW            | HOT WATER               |
| HWR           | HOT WATER RECIRCULATING |
| RD            | ROOF DRAIN              |
| RPZ           | REDUCED PRESSURE ZONE   |
| SA            | SHOCK ARRESTOR          |
| SK            | SINK                    |
| U/G           | UNDERGROUND             |
| VTR           | VENT THROUGH ROOF       |
| WCO           | WALL CLEANOUT           |



**1 FIRST FLOOR PLAN - PLUMBING**  
 SCALE: 1/8" = 1'-0" NORTH

KEY PLAN



N.T.S.

1. 06/24/2022 Issue for Bid

| No. | Date       | Revision      |
|-----|------------|---------------|
| 1   | 06/24/2022 | Issue for Bid |

**STRUCTURAL ENGINEER**  
 D.R. Pilla Consulting Engineers  
 143 Main Street  
 Nyack, NY 10960  
 PH (845) 727-7793

**FOR REFERENCE ONLY**  
**CIVIL ENGINEER**  
 Dine Engineering, Surveying & Landscape Architecture, P.C.  
 3 Garrett Place  
 Carmel, NY 10512  
 PH (845) 225-9690

**M.E.P. ENGINEER**  
 Tadjan Venegas Consulting Engineers  
 68 Purchase Street  
 Rye, NY 10580  
 PH (914) 967-9595

**KITCHEN CONSULTANT**  
 Cleveland Frable Lavallee, Inc.  
 39 Westmedford Avenue, 2nd Floor  
 White Plains, NY 10606  
 PH (914) 967-9660

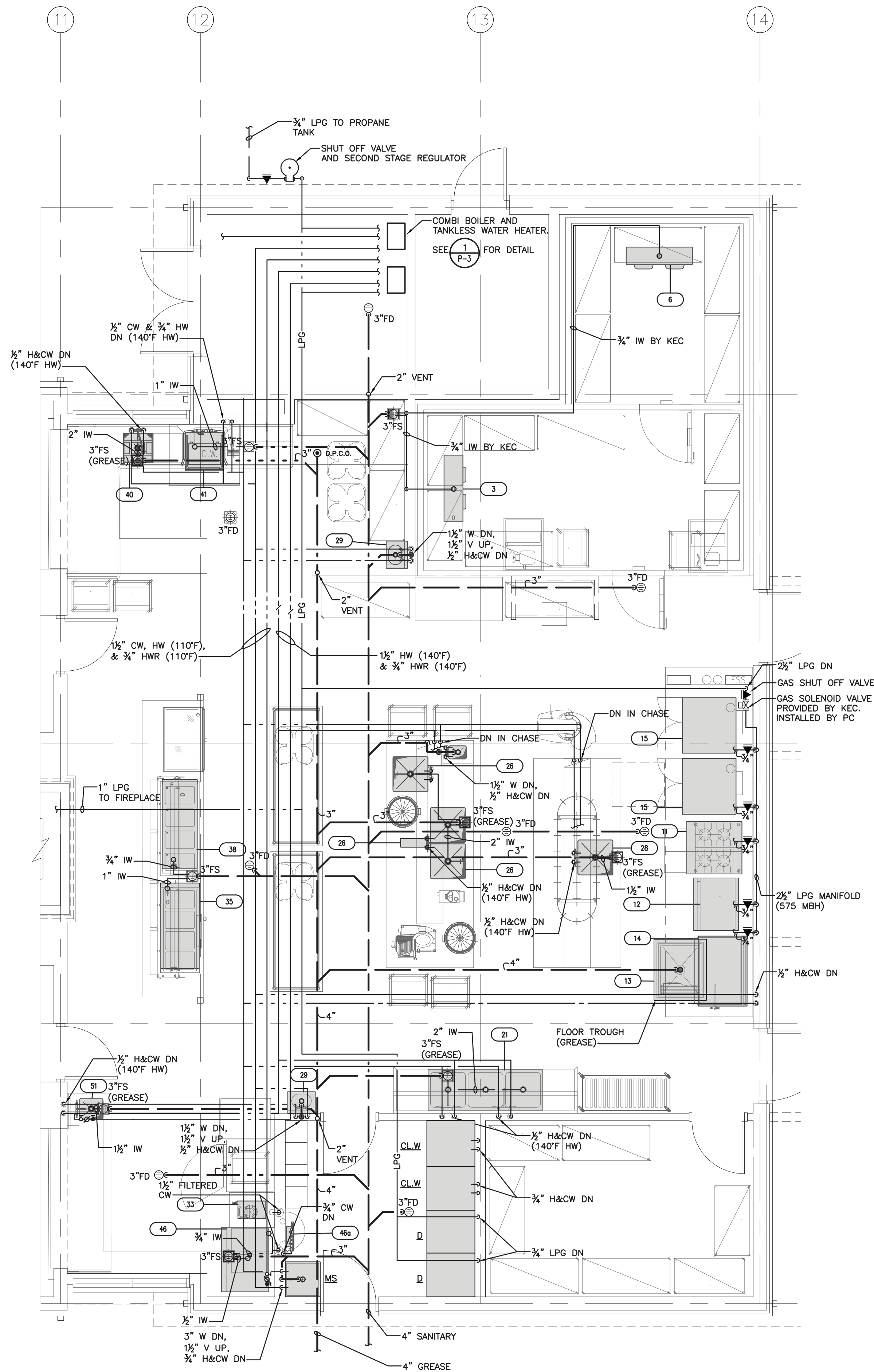
Architect  
**PETER GISOLFI ASSOCIATES**  
 Architects · Landscape Architects, LLP  
 566 Warburton Avenue, Hastings-on-Hudson, NY 10706  
 Phone: (914) 478-3677 · Fax: (914) 478-1600

Project Title  
**CAMP KAUFMANN**  
**GIRL SCOUTS OF GREATER NEW YORK**  
 81 CAMP ROAD  
 HOLMES, NY 12531

Drawing Title  
**PLUMBING**  
**FIRST FLOOR PLAN, DETAIL & SCHEDULE**

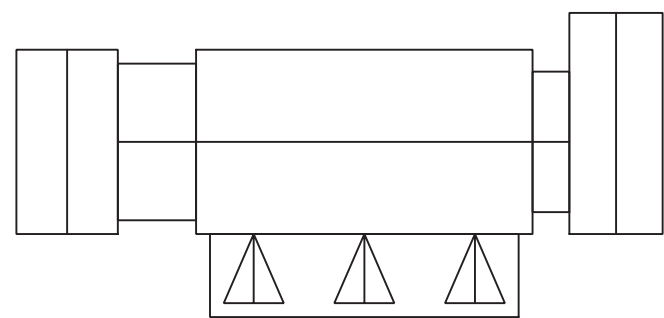
|                                   |             |            |
|-----------------------------------|-------------|------------|
| Seal & Signature                  | Date:       | 06/21/2021 |
|                                   | PROJECT No: | 2005       |
|                                   | DRAWN BY:   | CS, RW, MK |
|                                   | CHK BY:     | NL         |
|                                   | DWG No:     | <b>P-1</b> |
| CADD FILE No:                     |             |            |
| W: 2005 Girl Scouts of Greater NY |             |            |





1 ENLARGED KITCHEN PLAN — PLUMBING  
P-2 SCALE: 1/4" = 1'-0" NORTH

KEY PLAN



N.T.S.

| 06/24/2022   |  | Issue for Bid |  |  |   |  |
|--|--|---------------|--|--|---|--|
| No.  | Date   | Revision      |  |  |   |  |
| <table><tr><td><b>STRUCTURAL ENGINEER</b><br/>D.R. Pilla Consulting Engineers<br/>143 Main Street<br/>Nyack, NY 10960<br/>PH (845) 727-7793</td><td><b>FOR REFERENCE ONLY</b><br/><b>CIVIL ENGINEER</b><br/>Diste Engineering, Surveying &amp;<br/>Landscape Architecture, P.C.<br/>3 Garrett Place<br/>Carmel, NY 10512<br/>PH (845) 225-9690</td></tr><tr><td><b>M.E.P. ENGINEER</b><br/>Tadjen Venegas Consulting Engineers<br/>68 Purchase Street<br/>Rye, NY 10580<br/>PH (914) 967-9505</td><td><b>KITCHEN CONSULTANT</b><br/>Cleveland Frable Lavallo, Inc.<br/>39 Westmedford Avenue, 2nd Floor<br/>White Plains, NY 10606<br/>PH (914) 967-9660</td></tr></table> |  |               | <b>STRUCTURAL ENGINEER</b><br>D.R. Pilla Consulting Engineers<br>143 Main Street<br>Nyack, NY 10960<br>PH (845) 727-7793 | <b>FOR REFERENCE ONLY</b><br><b>CIVIL ENGINEER</b><br>Diste Engineering, Surveying &<br>Landscape Architecture, P.C.<br>3 Garrett Place<br>Carmel, NY 10512<br>PH (845) 225-9690 | <b>M.E.P. ENGINEER</b><br>Tadjen Venegas Consulting Engineers<br>68 Purchase Street<br>Rye, NY 10580<br>PH (914) 967-9505 | <b>KITCHEN CONSULTANT</b><br>Cleveland Frable Lavallo, Inc.<br>39 Westmedford Avenue, 2nd Floor<br>White Plains, NY 10606<br>PH (914) 967-9660 |
| <b>STRUCTURAL ENGINEER</b><br>D.R. Pilla Consulting Engineers<br>143 Main Street<br>Nyack, NY 10960<br>PH (845) 727-7793   | <b>FOR REFERENCE ONLY</b><br><b>CIVIL ENGINEER</b><br>Diste Engineering, Surveying &<br>Landscape Architecture, P.C.<br>3 Garrett Place<br>Carmel, NY 10512<br>PH (845) 225-9690 |               |  |  |   |  |
| <b>M.E.P. ENGINEER</b><br>Tadjen Venegas Consulting Engineers<br>68 Purchase Street<br>Rye, NY 10580<br>PH (914) 967-9505  | <b>KITCHEN CONSULTANT</b><br>Cleveland Frable Lavallo, Inc.<br>39 Westmedford Avenue, 2nd Floor<br>White Plains, NY 10606<br>PH (914) 967-9660                                   |               |  |  |   |  |
| Architect<br><b>PETER GISOLFI ASSOCIATES</b><br>Architects · Landscape Architects, LLP<br>566 Warburton Avenue, Hastings-on-Hudson, NY 10706<br>Phone: (914) 478-3677 · Fax: (914) 478-1600  |  |               |  |  |   |  |

Project Title  
**CAMP KAUFMANN  
GIRL SCOUTS OF  
GREATER NEW YORK**  
81 CAMP ROAD  
HOLMES, NY 12531

Drawing Title  
**PLUMBING  
KITCHEN PLAN**

|                                  |             |            |
|----------------------------------|-------------|------------|
| Seal & Signature                 | Date:       | 06/21/2021 |
|                                  | PROJECT No: | 2005       |
|                                  | DRAWN BY:   | CS, RW, MK |
|                                  | CHK BY:     | NL         |
|                                  | DWG No:     | P-2        |
| CADD FILE No:                    |             |            |
| W:2005 Girl Scouts of Greater NY |             |            |



PLUMBING NOTES

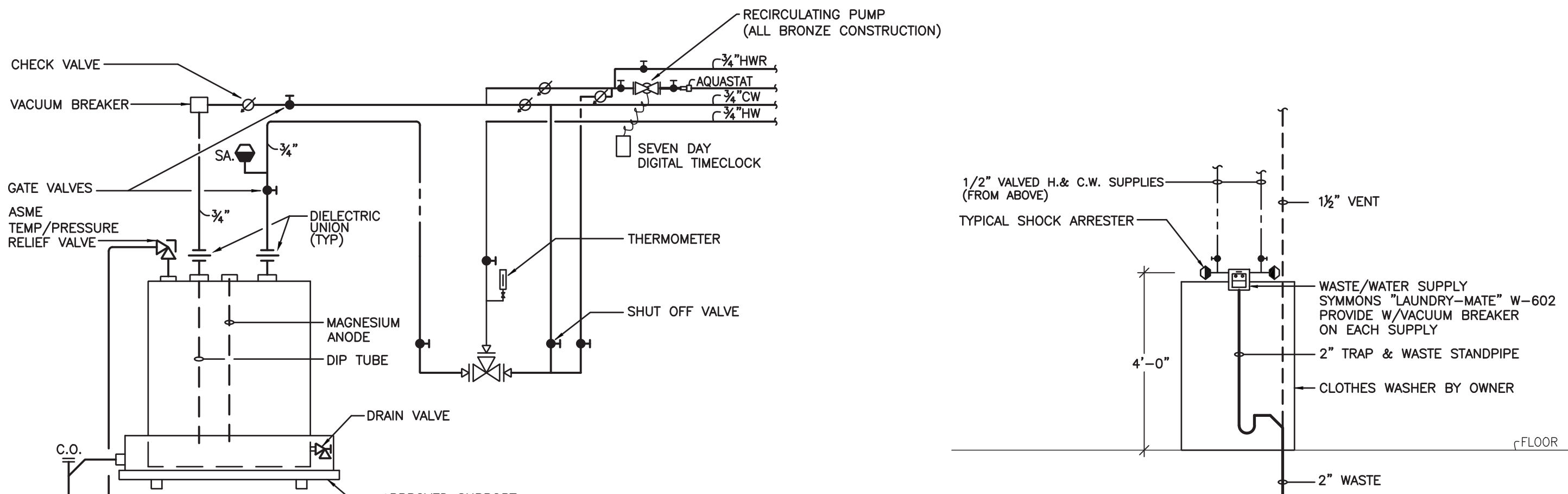
1. PLUMBING PLAN SHOWS ROUGH-IN AND CONNECTION LOCATIONS WITH CAPACITIES – SEE ROUGH-IN DRAWINGS FURNISHED BY THE FOOD SERVICE EQUIPMENT CONTRACTOR FOR ACTUAL ROUGH-IN LOCATIONS
2. ROUGH-INS FOR WATER, WASTE, FUEL GAS AND STEAM SERVICES SHALL EXTEND 6" (220 MM) BEYOND FINISH WALLS AND ABOVE FINISH FLOORS OR EQUIPMENT PADS – ALL FLOOR PENETRATIONS SHALL BE SEALED WATER TIGHT.
3. WATER PRESSURE IN FOOD, SERVICE AND BEVERAGE AREAS SHOULD BE 50 PSIG. (344,750N/M ) MAXIMUM – WATER PRESSURE AT DISHMACHINES, BOOSTER HEATERS, GLASS AND UTENSIL WASHERS TO BE 25 PSIG (172,375N/M ).
4. STEAM PRESSURE FOR FOOD SERVICE EQUIPMENT TO BE \_\_\_\_\_ UNLESS INDICATED OTHERWISE ON PLAN.
5. DIVISION 22 SHALL FURNISH AND INSTALL ALL NECESSARY VALVES, TRAPS, TAIL PIECES, LINE STRAINERS, PRESSURE REDUCING VALVES AND VACUUM BREAKERS AND CONNECT ALL WATER, FUEL GAS, STEAM AND WASTE LINES TO FOOD SERVICE EQUIPMENT.
6. DIVISION 22 TO PROVIDE GAS SERVICES AT EQUIPMENT TO MAINTAIN AN 8" WATER COLUMN. FOOD SERVICE EQUIPMENT CONTRACTOR TO PROVIDE GAS PRESSURE REGULATORS AS REQUIRED BY CODE AND A.G.A. FOR INSTALLATION BY DIVISION 22 IN LINE BETWEEN BUILDING SERVICES AND EQUIPMENT.
7. DIVISION 22 SHALL INSTALL & CONNECT ALL FAUCETS AND DRAINS FURNISHED WITH FOOD SERVICE AND BEVERAGE EQUIPMENT.
8. DIVISION 22 SHALL FURNISH & INSTALL ALL INDIRECT WASTE LINES FROM FOOD SERVICE AND BEVERAGE EQUIPMENT (EXCEPT EVAPORATOR COILS IN COLD STORAGE ROOMS) TO FLOOR SINKS AND INSULATE WASTE LINES FROM ICE BINS, EVAPORATORS AND BAIN MARIES.
9. FOOD SERVICE EQUIPMENT CONTRACTOR SHALL FURNISH & INSTALL FIRE SUPPRESSION SYSTEM. FSE CONTRACTOR SHALL FURNISH & DIVISION 22 SHALL INSTALL NORMALLY OPEN MECHANICALLY ACTIVATED OR ELECTRICAL SOLENOID GAS SHUT-OFF VALVE ABOVE SUSPENDED CEILING TILE.
10. WHERE PERMITTED BY LOCAL CODE, FLOOR SINKS SHALL BE INSTALLED FLUSH WITH FINISH FLOOR WITH GRATE COVER AS INDICATED.
11. THIS PLUMBING PLAN IS INTENDED TO SHOW DRAINAGE REQUIREMENTS FOR FOODSERVICE EQUIPMENT ONLY. IT IS THE PLUMBING ENGINEER'S RESPONSIBILITY TO CONFIRM DRAIN TYPE, CAPACITY & ELEVATION TO SATISFY LOCAL CODE REQUIREMENTS.
12. SEWAGE AND LIQUID WASTES (ROOF DRAINS) ARE TO BE CARRIED TO THE SEWER IN A MANNER THAT PROTECTS THE PREMISES, THE PERSONNEL AND CONTENTS WITHIN THE ESTABLISHMENT FROM CONTAMINATION. THE PLUMBING ENGINEER IS TO DESIGN WASTE PIPING SYSTEMS THAT CONFORM TO LOCAL HEALTH CODE REQUIREMENTS. PARTICULAR ATTENTION NEEDS TO BE GIVEN TO ANY LOCAL REQUIREMENTS PREVENTING WASTE PIPING (EXPOSED OR CONCEALED) FROM BEING ROUTED OVERHEAD IN AREAS USED FOR FOOD STORAGE, PREPARATION, SERVICE, WAREWASHING AND TRANSPORTATION.
13. GENERAL PURPOSE AREA DRAINS SHALL BE LOCATED AND SPECIFIED BY THE PLUMBING ENGINEER TO PREVENT "STANDING" WATER ON THE FLOOR. THIS IS OF PARTICULAR IMPORTANCE WHEN LOCAL CODES REQUIRE THAT DRAINS ACCEPTING INDIRECT WASTE BE SET ABOVE THE FINISHED FLOOR.
14. DIVISION 22 TO RUN WASTES TO GREASE INTERCEPTOR PER LOCAL CODES. GREASE INTERCEPTOR, IF REQUIRED, IS TO BE SIZED AND LOCATED BY THE PLUMBING ENGINEER. WASTE ROUGH-IN FOR DISCHARGE PIPING FROM A SURFACE MOUNTED GREASE INTERCEPTOR IS TO BE DIMENSIONED BY THE PLUMBING ENGINEER.
15. DIVISION 22 SHALL INSTALL WATER FILTER SYSTEMS PROVIDED BY THE FOOD SERVICE EQUIPMENT CONTRACTOR TO SERVICE ICE MAKERS, COFFEE MAKERS/URNS, SODA SYSTEMS, STEAMERS, ETC.
16. FOOD SERVICE EQUIPMENT CONTRACTOR TO PROVIDE, DIVISION 22 TO INSTALL, FLEXIBLE CONNECTORS FOR FOOD SERVICE & BEVERAGE EQUIPMENT REQUIRING GAS, WATER & STEAM CONNECTIONS. REFER TO PLUMBING SCHEDULE AND CONTRACT DOCUMENTS.

PLUMBING REMARKS LEGEND

- NOTE: THESE REMARKS ARE APPLICABLE WHEN NOTED IN THE PLUMBING REMARKS COLUMN ON THE PLUMBING SCHEDULE.
- P1 CONNECT TO CENTRAL WATER FILTER.
- P2 CONNECT TO INDIVIDUAL WATER FILTER FURNISHED BY F.S.E.C. AND INSTALLED BY PLUMBING DIVISION.
- P3 PLUMBING DIVISION TO INSTALL NECESSARY PIPING, VALVES, ETC. TO ENABLE THE OPERATOR TO BY-PASS THE FILTER SYSTEM TEMPORARILY WHEN WATER FLOW TO FIXTURES IS RESTRICTED BY CLOGGED FILTERS.
- P4 ROUTE INDIRECT WASTE FROM WATER FILTER PER DETAIL P-8-1.
- P5 CONCEAL WATER FILTER IN BASE CABINET. COORDINATE LOCATION AND ACCESS FOR FILTER REPLACEMENT WITH APPROPRIATE TRADES.
- P6 F.S.E.C. TO FURNISH AND INSTALL ELECTRIC HEAT WRAP TAPE ON FREEZER EVAPORATOR COIL DRAIN LINE. ELECTRICAL DIVISION TO MAKE FINAL CONNECTIONS.
- P7 F.S.E.C. EXTEND DRAIN LINE FROM INDIRECT WASTE CONNECTION AT EVAPORATOR COIL TO FLOOR DRAIN PER DETAIL P-2-1.
- P8 CONDENSER WATER TEMPERATURE TO BE BETWEEN 45° & 85° FAHRENHEIT.
- P9 FLEXIBLE DISCONNECT(S) FURNISHED BY F.S.E.C. PER SPECIFIC CONDITIONS & INSTALLED BY PLUMBING DIVISION.
- P10 WATER SWIRL FLEXIBLE DISCONNECT(S) FURNISHED BY F.S.E.C. PER SPECIFIC CONDITIONS & INSTALLED BY PLUMBING DIVISION.
- P11 F.S.E.C. TO FURNISH FLEXIBLE DISCONNECT(S) FOR EQUIPMENT UNITS PROVIDED BY OTHERS.
- P12 F.S.E.C. TO CONFIRM PLUMBING REQUIREMENTS WITH OWNER OR OPERATOR FOR EQUIPMENT NOT IN CONTRACT.
- P13 PLUMBING ENGINEER TO SIZE AND SPECIFY GREASE INTERCEPTOR PER LOCAL CODE. PLUMBING ENGINEER TO LOCATE FLOOR PENETRATION FOR WASTE LINE/AIR GAP DRAIN FROM INTERCEPTOR TO SEWER SYSTEM.
- P14 F.S.E.C. TO PROVIDE AND PLUMBING DIVISION TO INSTALL GAS SHUT OFF VALVE FOR FIRE SUPPRESSION SYSTEM. REFER TO CFL DETAIL C-22-6.
- P15 PLUMBING DIVISION TO PROVIDE & INSTALL INTERCONNECTING PIPING FOR A COMPLETE AND OPERABLE SYSTEM. INDIRECT WASTE TO RUN INSIDE WALL PER DETAIL P-5-1. EXTEND WASTE TO GREASE TRAP PER LOCAL CODES. CHROME PLATED PIPING WHERE EXPOSED.
- P16 INTERPLUMB CONTROL PANEL THROUGH VACUUM BREAKER & CHECK VALVE W/ EXHAUST HOOD, INCLUDING DETERGENT LINE FROM PANEL TO WATER LINE TO HOOD.
- P17 EXTEND DRAIN LINE FROM PRESSURE RELIEF VALVE ON BOOSTER HEATER TO FLOOR SINK.
- P18 FURNISH & INTERPLUMB RECIRCULATING WATER LINES W/ GATE VALVES FROM COLLECTOR/ TROUGHVEYOR TO END OF TROUGH, INCLUDING GUSHER HEADS.
- P19 FURNISH & INTERPLUMB RECIRCULATING WATER LINE W/ BALL VALVE FROM SYSTEM TO INLET AT END OF TROUGH.
- P20 STUB UP INSIDE UTILITY CHASE AND BTC
- P21 DOWN FROM ABOVE INSIDE UTILITY CHASE AND BTC

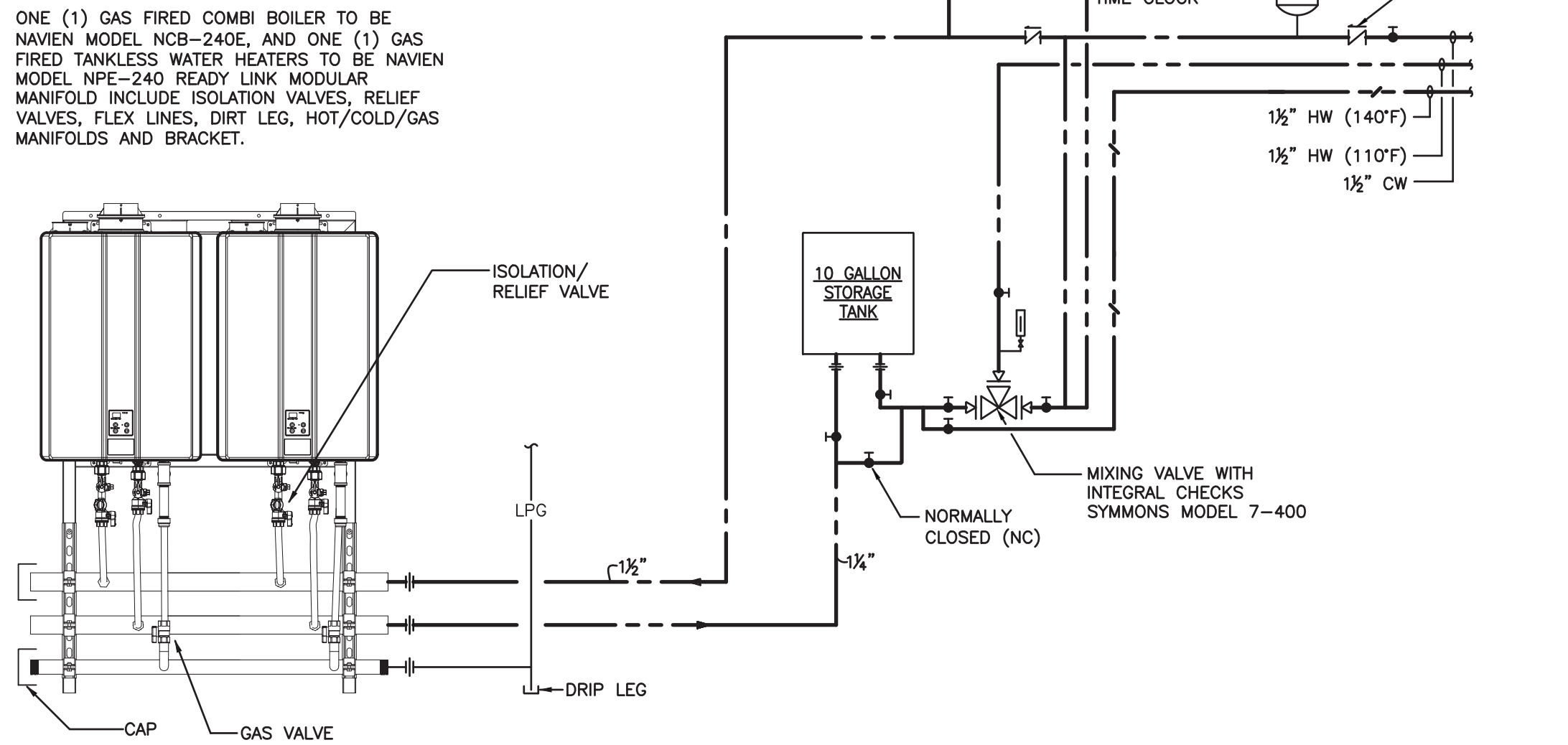
PLUMBING EQUIPMENT SCHEDULE

| ITEM NO | QTY | ITEM NAME                                    | CW   | CW AFF    | HW   | HW AFF    | SINK SIZE   | IW     | DW     | DIRECT WASTE CONN. HEIGHT(IN) | FW   | FW AFF | GAS MBTU | GAS  | GAS AFF | REMARKS   | ITEM NO |
|---------|-----|--|------|-----------|------|-----------|-------------|--------|--------|-------------------------------|------|--------|----------|------|---------|---|---------|
| 3       | 1   | REFRIGERATION COIL, MED TEMP                 |      |           |      |           |             | 3/4"   |        |                               |      |        |          |      |         | ROUTE IW TO FLOOR SINK                                    | 3       |
| 6       | 1   | EVAPORATOR COIL, LOW TEMPERATURE             |      |           |      |           |             | 3/4"   |        |                               |      |        |          |      |         | ROUTE IW TO FLOOR SINK                                    | 6       |
| 11      | 1   | RANGE, 4 OPEN BURNERS                        |      |           |      |           |             |        |        |                               |      |        | 175.0    | 3/4" | 30"     | P9  | 11      |
| 12      | 1   | GRIDDLE, GAS, FLOOR MODEL                    |      |           |      |           |             |        |        |                               |      |        | 90.0     | 3/4" | 30"     | P9  | 12      |
| 13      | 1   | TILTING SKILLET BRAISING PAN, GAS            | 1/2" | 14"       | 1/2" | 14"       |             |        |        |                               |      |        | 130.0    | 3/4" | 30"     | P9  | 13      |
| 14      | 1   | FLOOR TROUGH                                 |      |           |      |           |             |        | 4"     | -6"                           |      |        |          |      |         | P13   | 14      |
| 15      | 2   | CONVECTION OVEN, DOUBLE, GAS                 |      |           |      |           |             |        |        |                               |      |        | 90.0     | 3/4" | 30"     | P9, GAS MANIFOLD  | 15      |
| 21      | 1   | THREE (3) COMPARTMENT SINK                   |      |           |      |           |             | (3) 2" |        |                               |      |        |          |      |         | P13, ROUTE TO FLOOR SINK                                  | 21      |
|         | 1   |  | 1/2" | 14"       | 1/2" | 14"       | 3) 24X24X13 |        |        |                               |      |        |          |      |         | HW TEMP – 140°  |         |
|         | 1   |  | 1/2" | 14"       | 1/2" | 14"       |             |        |        |                               |      |        |          |      |         | HW TEMP – 140°  |         |
| 26      | 1   | TABLE WITH SINKS, U/CHASE, O. SHELF          | 1/2" | DFA @ 18" | 1/2" | DFA @ 18" | 24X24X14    | 2"     |        |                               |      |        |          |      |         | P13, P21, HW TEMP – 140°, ROUTE TO FLOOR SINK             | 26      |
|         | 1   |  | 1/2" | DFA @ 18" | 1/2" | DFA @ 18" | 2) 24X24X12 | 2"     |        |                               |      |        |          |      |         | P13, P21, HW TEMP – 140°, ROUTE MANIFOLD IW TO FLOOR SINK |         |
|         | 1   |  | 1/2" | DFA @ 18" | 1/2" | DFA @ 18" | 9X12X 6     |        | 1-1/2" | 24"                           |      |        |          |      |         | P21, HW TEMP – 110°                                       |         |
| 28      | 1   | TABLE W/SINK                                 | 1/2" | DFA @ 18" | 1/2" | DFA @ 18" | 24X24X10    | 1-1/2" |        |                               |      |        |          |      |         | P13, P21, HW TEMP – 140°, ROUTE TO FLOOR SINK             | 28      |
| 29      | 2   | HAND SINK                                    | 1/2" | DFA @ 18" | 1/2" | DFA @ 18" | 9X12X 6     |        | 1-1/2" |                               |      |        |          |      |         | P21, HW TEMP – 110°                                       | 29      |
| 33      | 1   | COFFEE BREWER                                |      |           |      |           |             |        |        |                               | 3/8" | 48"    |          |      |         | P1, P10 FROM ITEM 46A                                     | 33      |
| 35      | 1   | HOT FOOD WELL UNIT, DROP-IN, ELECTRIC        |      |           |      |           |             | 1"     |        |                               |      |        |          |      |         | MANIFOLDED TO SHUT-OFF, ROUTE TO FLOOR SINK               | 35      |
| 38      | 1   | HOT / COLD FOOD WELL UNIT, DROP-IN, ELECTRIC |      |           |      |           |             | 3/4"   |        |                               |      |        |          |      |         | MANIFOLDED TO SHUT-OFF, ROUTE TO FLOOR SINK               | 38      |
| 40      | 1   | SOILED DISHABLE W/PRE-RINSE SINK             | 1/2" | 14"       | 1/2" | 14"       | 20X20X7     | 2"     |        |                               |      |        |          |      |         | HW TEMP – 140°, ROUTE TO FLOOR SINK                       | 40      |
| 41      | 1   | DISHWASHER, DOOR TYPE                        | 1/2" | 14"       | 3/4" | 14"       |             | 1"     |        |                               |      |        |          |      |         | HW TEMP – 140°, ROUTE TO FLOOR SINK                       | 41      |
| 46      | 1   | ICE MAKER, CUBE-STYLE                        |      |           |      |           |             | 3/8"   |        |                               | 3/8" | 48"    |          |      |         | P1, P10, ROUTE TO FLOOR SINK                              | 46      |
|         | 1   |  |      |           |      |           |             | 3/4"   |        |                               |      |        |          |      |         | ROUTE TO FLOOR SINK                                       |         |
| 46A     | 1   | WATER FILTER                                 | 3/4" | 7'-0"     |      |           |             |        |        |                               |      |        |          |      |         | SERVES ITEMS 33, 46                                       | 46A     |
| 51      | 1   | COUNTER W/SINK                               | 1/2" | 18"       | 1/2" | 18"       | 14X16X10    | 1-1/2" |        |                               |      |        |          |      |         | P13, HW TEMP – 140°, ROUTE TO FLOOR SINK                  | 51      |
| 56      | 2   | JUICE DISPENSER                              |      |           |      |           |             |        |        |                               | 3/8" | 48"    |          |      |         | P1, P10, FROM 61  | 56      |
| 57      | 2   | HOT WATER DISPENSER                          |      |           |      |           |             |        |        |                               | 3/8" | 48"    |          |      |         | P1, P10, FROM 61  | 57      |
| 58      | 4   | SERVING COUNTER W/FOOD SHIELD, SALAD         |      |           |      |           |             | 3/4"   |        |                               |      |        |          |      |         | ROUTE IW TO BUCKET, BUCKET BY OWNER                       | 58      |
| 59      | 2   | ICE DISPENSER, COUNTER TOP                   |      |           |      |           |             | 3/4"   |        |                               |      |        |          |      |         | ROUTE TO FLOOR SINK                                       | 59      |
| 61      | 2   | WATER FILTER                                 | 1/2" | 18"       |      |           |             |        |        |                               |      |        |          |      |         | SERVES ITEMS 56, 57                                       | 61      |



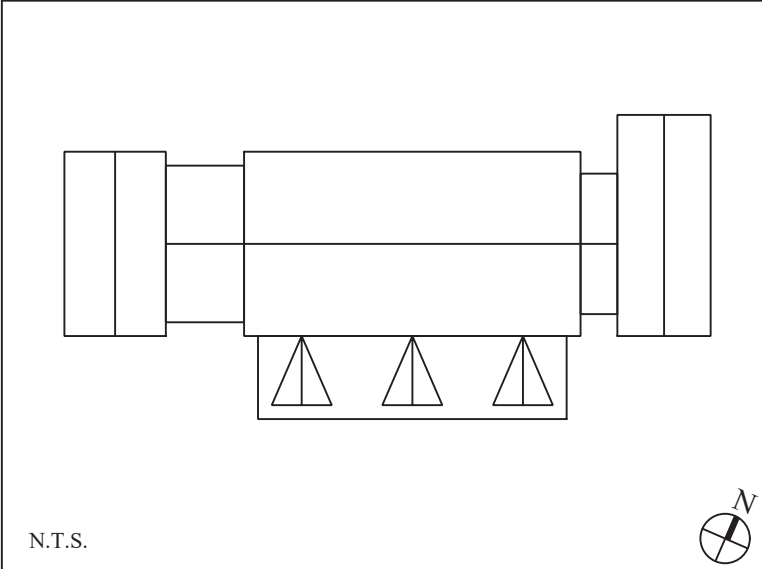
3 CLOTHES WASHER PIPING DETAIL  
P-3 NOT TO SCALE

2 WATER HEATER DETAIL  
P-3 NOT TO SCALE



1 COMBI BOILER/ TANKLESS WATER HEATER PIPING  
P-3 NOT TO SCALE

KEY PLAN



1. 06/24/2022 Issue for Bid

| No. | Date       | Revision      |
|-----|------------|---------------|
| 1   | 06/24/2022 | Issue for Bid |

**STRUCTURAL ENGINEER**  
D.R. Pilla Consulting Engineers  
143 Main Street  
Nyack, NY 10960  
PH (845) 727-7793

**FOR REFERENCE ONLY**  
**CIVIL ENGINEER**  
Insite Engineering, Surveying & Landscape Architecture, P.C.  
3 Garrett Place  
Carmel, NY 10512  
PH (845) 225-9690

**M.E.P. ENGINEER**  
Tetjen Venegas Consulting Engineers  
68 Purchase Street  
Rye, NY 10580  
PH (914) 967-9505

**KITCHEN CONSULTANT**  
Cleverger Frable Lavallo, Inc.  
39 Westmedford Avenue, 3rd Floor  
White Plains, NY 10606  
PH (914) 997-9660

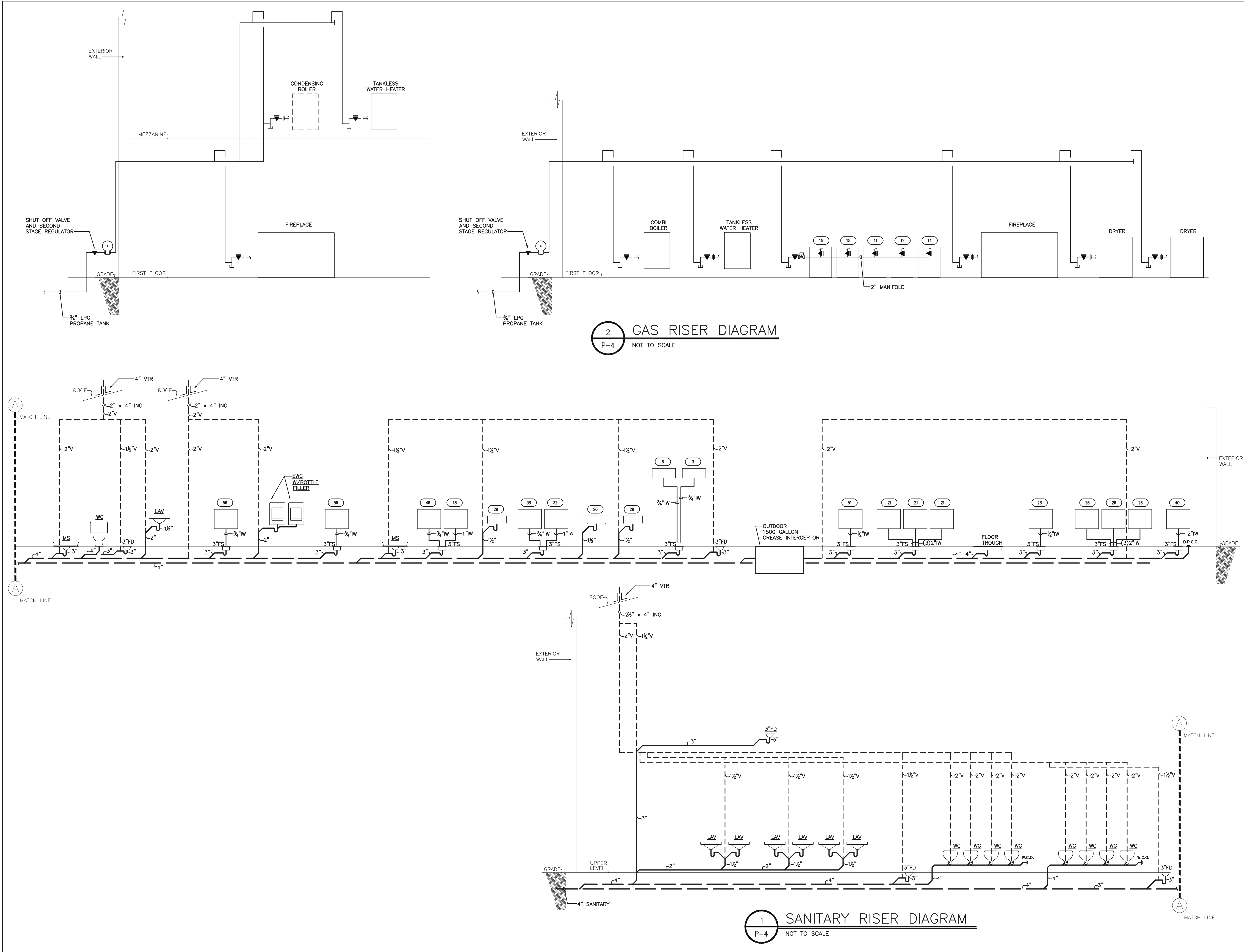
Architect  
**PETER GISOLFI ASSOCIATES**  
Architects · Landscape Architects, LLP  
566 Warburton Avenue, Hastings-on-Hudson, NY 10706  
Phone: (914) 478-3677 · Fax: (914) 478-1600

Project Title  
**CAMP KAUFMANN**  
**GIRL SCOUTS OF GREATER NEW YORK**  
81 CAMP ROAD  
HOLMES, NY 12531

Drawing Title  
**PLUMBING**  
**FOOD SERVICE PLUMBING SCHEDULE**

|                  |                                   |
|------------------|-----------------------------------|
| Seal & Signature | Date: 06/21/2021                  |
|                  | PROJECT No: 2005                  |
|                  | DRAWN BY: CS, RW, MK              |
|                  | CHK BY: NL                        |
|                  | DWG No: <b>P-3</b>                |
|                  | CADD FILE No:                     |
|                  | W: 2005 Girl Scouts of Greater NY |





KEY PLAN

N.T.S.

1. 06/24/2022

Issue for Bid

| No.  | Date | Revision |
|--|------|----------|
| <div><div>STRUCTURAL ENGINEER</div><div>D.R. Pilla Consulting Engineers</div><div>143 Main Street</div><div>Nyack, NY 10960</div><div>PH (845) 727-7793</div></div>  |      |          |
| <div><div>FOR REFERENCE ONLY</div><div>CIVIL ENGINEER</div><div>Insite Engineering, Surveying &amp; Landscape Architecture, P.C.</div><div>3 Garrett Place</div><div>Cornell, NY 14852</div><div>PH (845) 225-9690</div></div> |      |          |
| <div><div>M.E.P. ENGINEER</div><div>Tedjen Venegas Consulting Engineers</div><div>68 Purchase Street</div><div>Rye, NY 10580</div><div>PH (914) 967-9505</div></div>   |      |          |
| <div><div>KITCHEN CONSULTANT</div><div>Cleaver Frable Lavallo, Inc.</div><div>39 Westmedford Avenue, 2nd Floor</div><div>White Plains, NY 10606</div><div>PH (914) 967-9660</div></div>  |      |          |

Architect

PETER GISOLFI

ASSOCIATES

Architects · Landscape Architects, LLP

566 Warburton Avenue, Hastings-on-Hudson, NY 10706

Phone: (914) 478-3677 · Fax: (914) 478-1600

Project Title

CAMP KAUFMANN

GIRL SCOUTS OF

GREATER NEW YORK

81 CAMP ROAD

HOLMES, NY 12531

Drawing Title

PLUMBING

SANITARY, WATER &

GAS RISER

Seal & Signature

Date:

06/21/2021

PROJECT No:

2005

DRAWN BY:

CS, RW, MK

CHK BY:

NL

DWG No:

P-4

CADD FILE No:

W: 2005 Girl Scouts of Greater NY