

EQUIPMENT SCHEDULE:

ITEM	LOCATION	MANUFACTURE	INFORMATION	SIZE	COLOR		TOTAL
GARAGE DOOR	APPARATUS FLOOR	RAYNOR GARAGE DOOR	THERMASEAL TM200C	16'-8" X 13'-1"	S.B.O.		
FLOOR DRAIN	APPARATUS FLOOR	JAY R. SMITH MFG. CO.	12" HEAVEY GAGE GALV. STEEL GRATING	12"	N.A		
TRENCH DRAIN	DRIVEWAY	PRECAST CONCRETE SALES CO.	8"Ø HEAVY DUTY DRAIN	8"Ø	S.B.O.		
CEILING PAINT	APPARATUS CEILING	BENJAMIN MOORE	ULTRA SPEC HP D.T.M. ACRYLIC GLOSS HP28 PRIMER AND FINISH COAT	N/A	S.B.O.		
DRYWELL	DRIVEWAY	PRECAST CONCRETE SALES CO.	PRE-CAST CONCRETE LEACHING RING	10"Ø X 6"	N.A		
DRYWELL	FRONT YARD	CULTEC, INC.	RECHARGER 330 XL HD	4'-4"Ø X 8'-6"	N.A		
FIRE PROOFING	CELLAR	GCP APPLIED TECHNOLOGIES	MONOKOTE Z-106 HY	N/A	N.A		
WATERPROOFING	APPARATUS FLOOR	SIKA CORPORATION	COLID FLUID APPLIED POLYURETHAN TRAFFIC WATERPROOFING SYSTEM (SIKALATIC 745 TEXTURED) SIKALISTIC PRIMER SIKALISTIC 720 BASECOAT SIKALISTIC 745 TEXTURED TOP COAT	N/A	N.A		
TOILET BOWL	RESTROOM	AMERICAN STANDARD	MADERA Elongated one-piece toilet	ADA	WHITE	MODEL: 2857.128.020	2
SINK	RESTROOM	AMERICAN STANDARD	Wheelchair 20" Wall Mounted Porcelain Bathroom Sink	ADA	WHITE	MODEL: 99140.013.020	2
FAUCET	RESTROOM	AMERICAN STANDARD	Colony Widespread Bathroom Faucet	ADA	WHITE	MODEL: 3875.501.002	2
SLOP SINK	RESTROOM	AMERICAN STANDARD	Wheelchair 20" Wall Mounted Porcelain Bathroom Sink	ADA	WHITE	MODEL: 99140.013.020	2
UTILITY SINK	RESTROOM	SPLASH	Splash CS-1-24-24-14-BS8 27" 1 Compartment Sink w/ 24"L x 24"W Bowl, 14" Deep	ADA	SS	MODEL: KaTom #: 079-BK8BS12414 • MPN: CS-1-24-24-14-BS8 (BK8BS-1-24-14)	1
UTILITY SINK FAUCET	RESTROOM	SPLASH	Splash SPL810L-12 Splash Mount Faucet w/ 10" Swing Spout & Lever Handles		SS	KaTom #: 079-SPLLO1821 • MPN: SPL810L-12	1
BATH/SHOWER PARTITIONS	RESTROOM	HADRIAN	STAINLESS STEEL PARTITIONS	ADA	SS	AS PER DRAWING LAYOUTS	2
MIRROR	RESTROOM	AMERICAN SPECIALITES (ASI)	STAINLESS STEEL 24X36	ADA	SS	MODEL# 20650-B SERIES	2
GRAB BARS	RESTROOM	AMERICAN SPECIALITES (ASI)	STAINLESS STEEL AS PER DRAWINGS	ADA	SS	AS PER DRAWINGS LAYOUTS & ADA DETAILS	2
SHOWER SEAT	RESTROOM	AMERICAN SPECIALITES (ASI)	FOLDING SHOWER SEAT	ADA	SS	8206-L FOLDING SHOWER SEAT, SOLID PHENOLIC, WHITE – L SHAPED, 33" WIDE – LEFT HAND, 8206-R FOLDING SHOWER SEAT, SOLID PHENOLIC, WHITE – L SHAPED, 33" WIDE – RIGHT HAND,	2
HAND DRYERS	RESTROOM	AMERICAN SPECIALITES (ASI)	SATIN STAINLESS STEEL	ADA	SS	0185-93 PROFILE™ STEEL COVER HAND DRYERS	2
TOILET TISSUE DISPENSER	RESTROOM	AMERICAN SPECIALITES (ASI)	SATIN STAINLESS STEEL	ADA	SS	74022-HBSM TOILET TISSUE HOLDER WITH HOOD (DOUBLE) – SURFACE MOUNTED, BRIGHT	2
ACCESSIBLE WATER FOUNTAIN	APPARATUS FLOOR	Elkay	Color: Light Gray Granite	ADA		Elkay EZS8L wall-mounted cooler, ADA Barrier Free Item#T9FB190402 Color: Light Gray Granite Width 18-3/8 Depth 19 Height 19-13/16 weight 51 lbs	1

ANSI COMPLIANT DISPENSERS
AS PER SECTION: 604.7

ANSI COMPLIANT GRAB BARS
AS PER SECTION: 604.5

ANSI COMPLIANT SINK
AS PER SECTION 606.1

ANSI COMPLIANT TOILET
AS PER SECTION 604.1

ANSICOMPLIANT COAT HOOKS AND
SHELVES AS PER SECTION 603.4
SHELVES: 40" MIN. 48" MAX. ABOVE FLOOR

ANSI COMPLIANT MIRRORS
AS PER SECTION 603.3

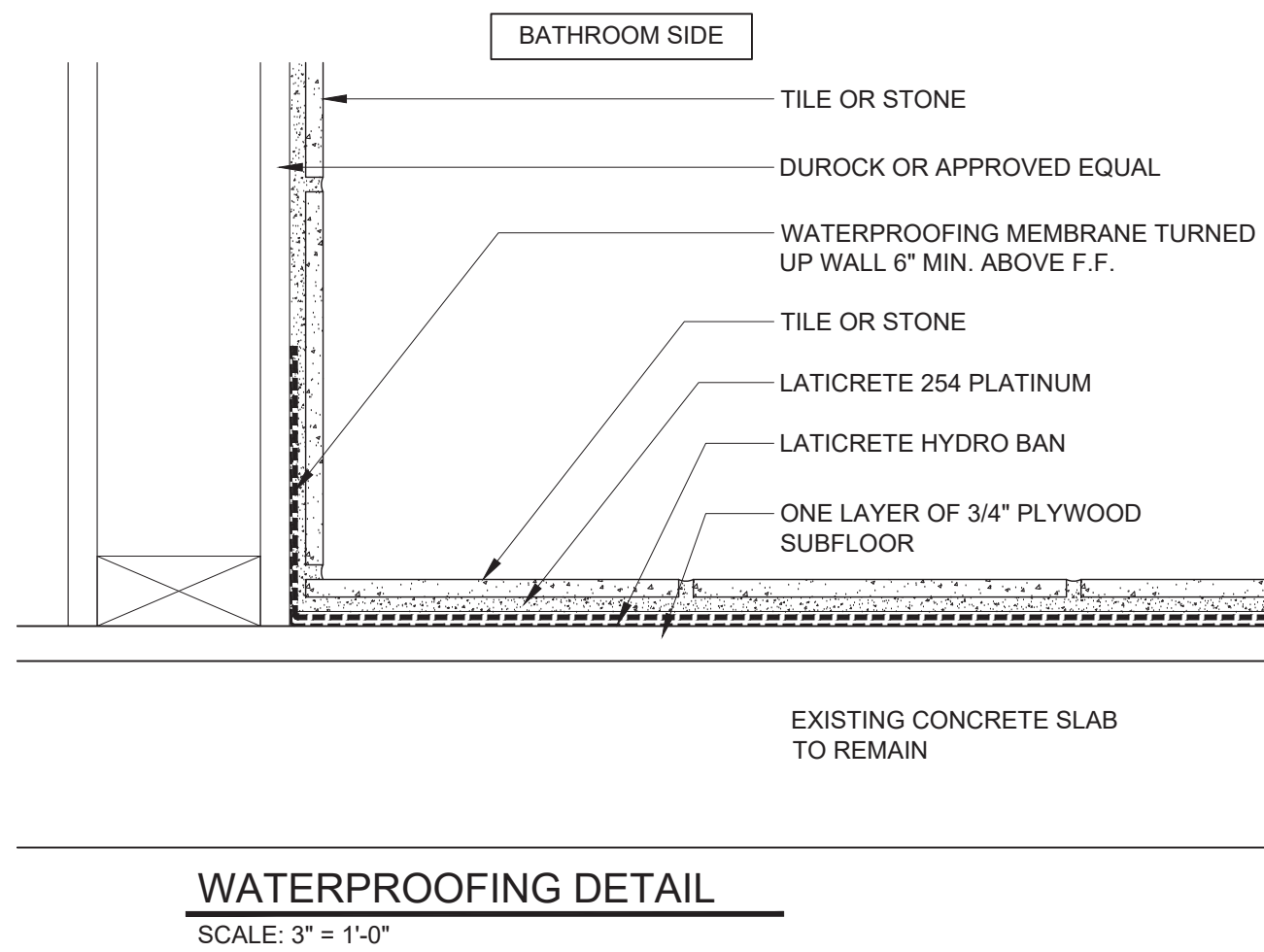
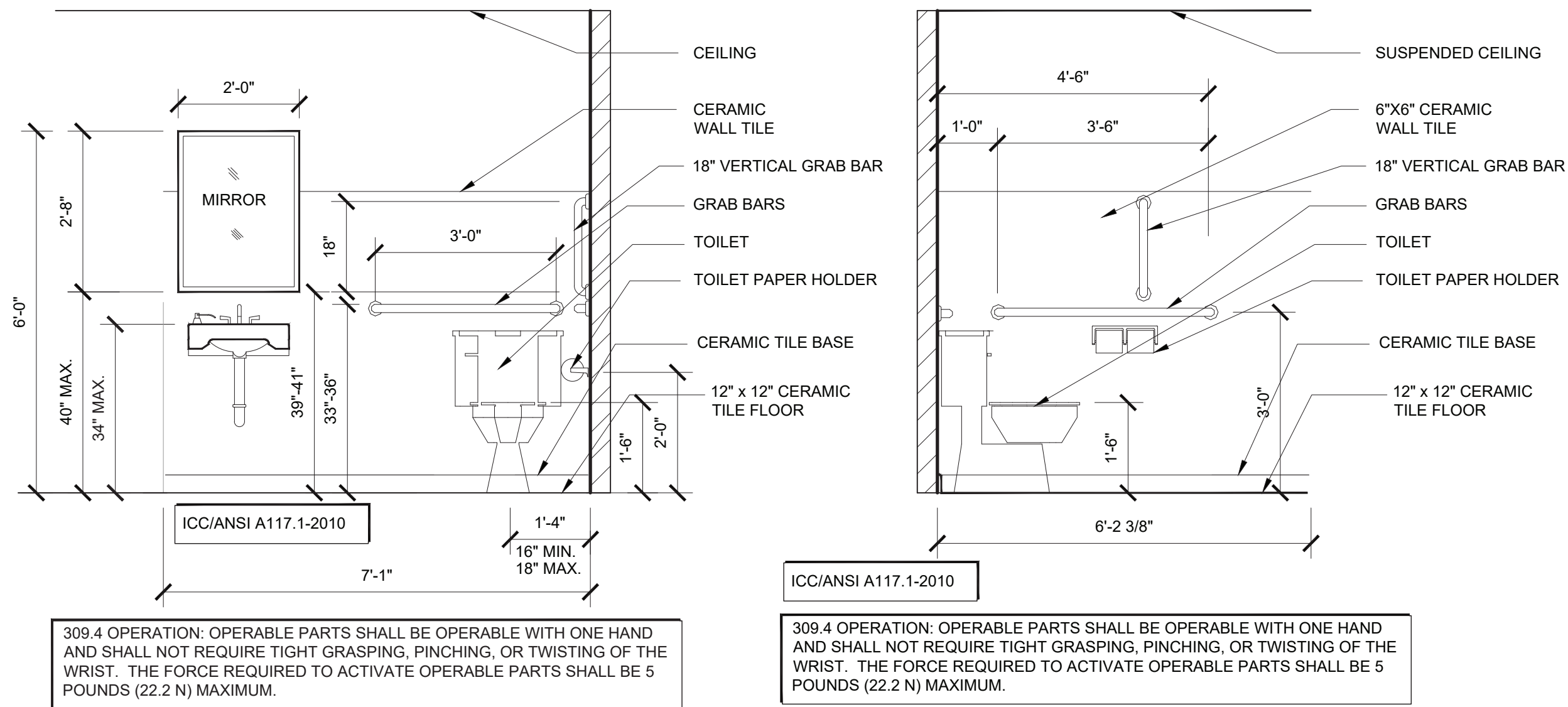
FLOOR TYPE: 12" x 12" CERAMIC TILE

MARBLE SADDLE
ADA COMPLIANT THRESHOLD AT
DOORWAYS: 1/2" MAXIMUM HEIGHT
AS PER SECTION 404.2.4

NEW 2'-10"x 6'-8" S.C. DOOR
WITH ANSI HARDWARE
ANSI COMPLIANT DOOR WIDTH
32" MINIMUM CLEAR
AS PER SECTION 404.2.2

BLOCKING DETAIL FOR GRAB BARS
SEE LOCATIONS OF GRAB BARS FOR
EXTENT OF WORK

ICC/ANSI A117.1-2010



WATERPROOFING DETAIL

SCALE: 3" = 1'-0"

UNIVERSAL ENGINEERING
SERVICES, P.C.

ENGINEERING
GREEN DESIGN
CONSTRUCTION MANAGEMENT

403 Main Street, Suite 871
Armonk, New York 10504
TEL: (212) 586-5192
FAX: (914) 470-1133
E-MAIL: JPATERNO@UESPC.COM

UES NOTE:

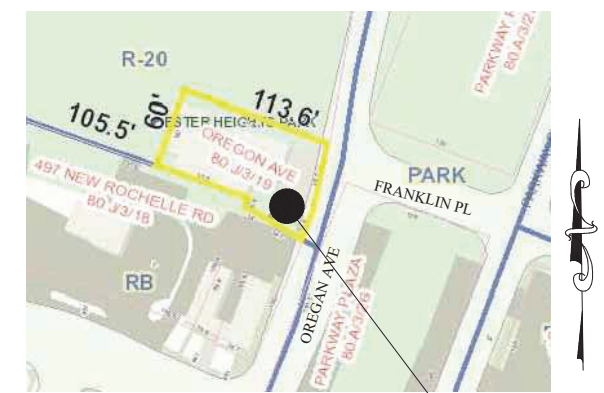
PLANS ARE NOT TO BE SCALED. CONTRACTOR IS TO MAKE NO ASSUMPTIONS WITH REGARD TO THESE DRAWINGS. ANY ADDITIONAL INFORMATION OR DIMENSIONS REQUIRED TO PROPERLY ESTIMATE OR ERECT THIS PROJECT WILL BE SUPPLIED BY THE ENGINEER UPON REQUEST. CONTRACTOR SHALL VERIFY IN THE FIELD ALL DIMENSIONS AND CONDITIONS INDICATED ON THIS DRAWING AND BE RESPONSIBLE FOR SAME. ANY DISCREPANCIES BETWEEN THE DRAWINGS AND FIELD CONDITIONS SHOULD BE REPORTED TO THE ENGINEER BEFORE PROCEEDING WITH THE WORK. THESE DRAWINGS SHALL NOT BE ALTERED WITHOUT THE CONSENT AND KNOWLEDGE OF THE ENGINEER. ALL REPRODUCTION RIGHTS RESERVED. REPRODUCTION WITHOUT PERMISSION IS PROHIBITED.

[illegible]

6	BID REVIEW ADA IMPROVEMENTS	10/19/21
5	BLDG. DEPT. REVIEW	05/03/21
4	BLDG. DEPT. REVIEW	06/02/20
3	BID DOCUMENTS	05/08/20
2	BID DOCUMENT REVIEW	03/30/20
1	CLIENT REVIEW	12/20/19
NO.	ISSUED FOR	DATE

REVISIONS

KEY PLAN



SCOPE OF WORK

RESTROOM ADA IMPROVEMENTS AND MECHANICAL SYSTEMS

PROJECT LOCATION:

CHESTER HEIGHTS
EASTCHESTER FIRE STATION
EASTCHESTER, N.Y.
SECTION: 80.J
BLOCK: 03
LOT: 19
ZONE: R-20

SHEET TITLE

EQUIPMENT LIST

ACCESSIBLE TYPICAL DETAILS

PROJECT #: 18-040418

SCALE: AS NOTED

DATE: 10/19/21

DRAWN BY: JOSEPH PATERNO, LEED AP

REVIEW

AEL GIANAT

S-403

SHEET: 8 OF 10