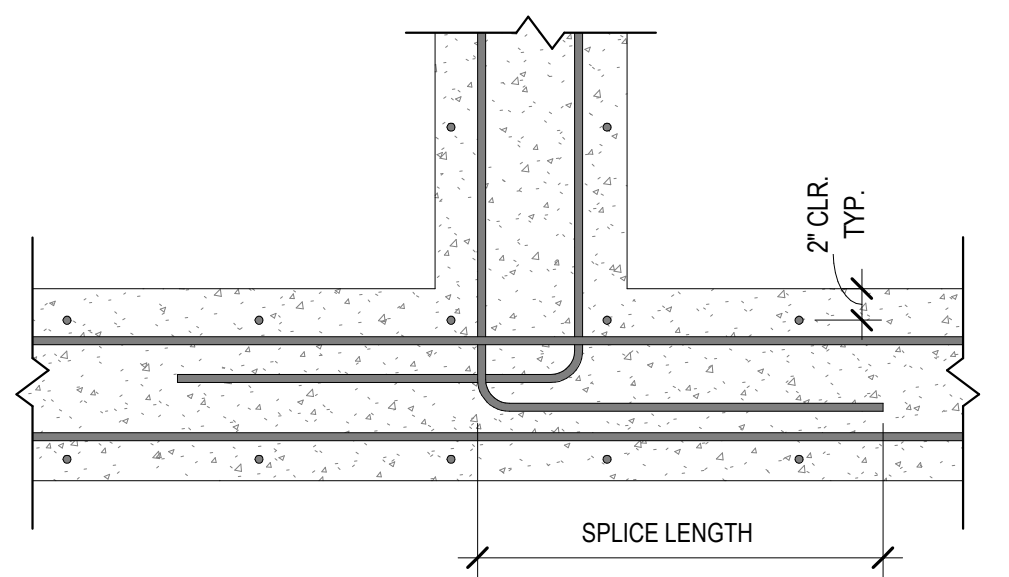


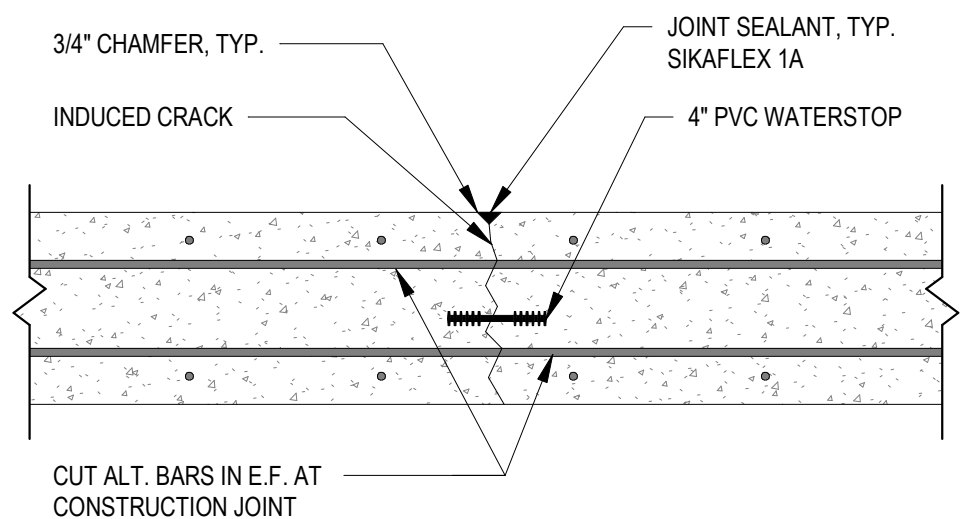
NOTE:
1. REFER TO WALL SECTION FOR ORIENTATION OF REINFORCEMENT
2. REFER TO REINF. SPLICE LENGTH SCHEDULE FOR SPLICE LENGTHS.

CONCRETE WALL CORNER
3/4" = 1'-0"



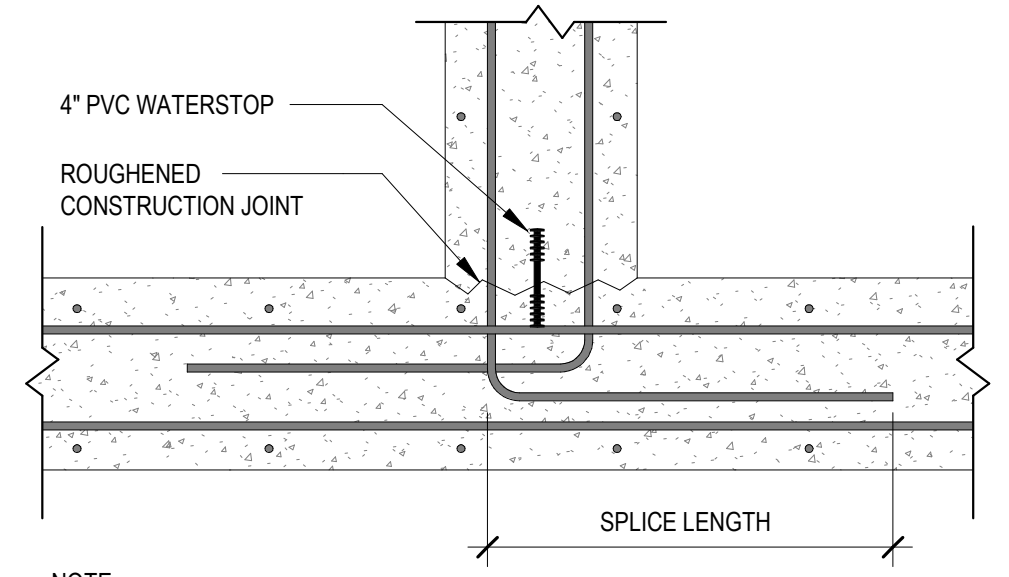
NOTE:
1. REFER TO PLAN AND WALL SECTIONS FOR ORIENTATION OF REINFORCEMENT.
2. REFER TO REINF. SPLICE LENGTH SCHEDULE FOR SPLICE LENGTHS.

CONCRETE WALL INTERSECTION
1" = 1'-0"



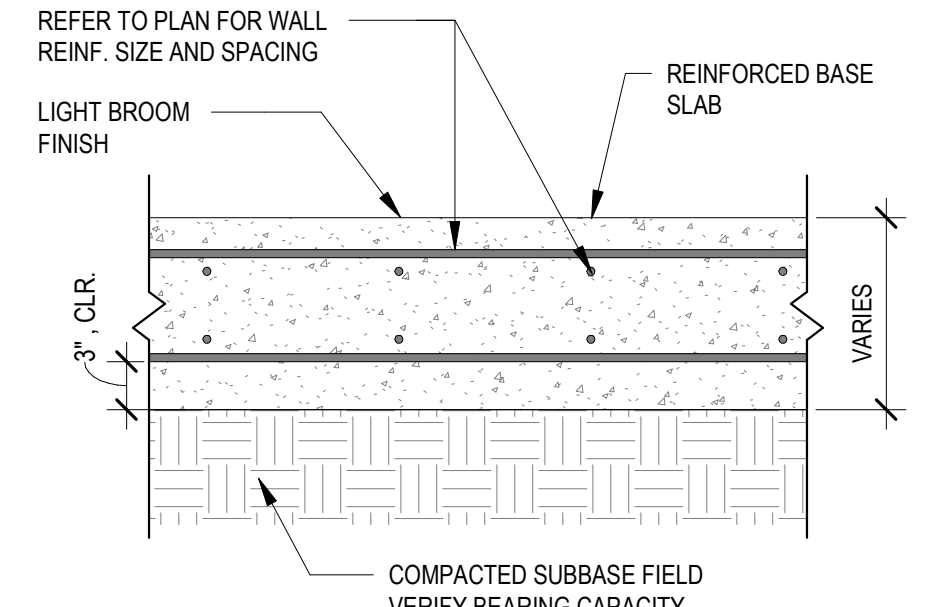
NOTE:
1. CUT ALTERNATING BARS IN E.F. AT CONTROL JOINT.
2. PROVIDE CONTROL JOINTS AS INDICATED IN PLAN AND IN THE CAST-IN-PLACE CONSTRUCTION SECTION OF THE GENERAL SPECIFICATIONS.

CONCRETE WALL CONTROL JOINT
1" = 1'-0"



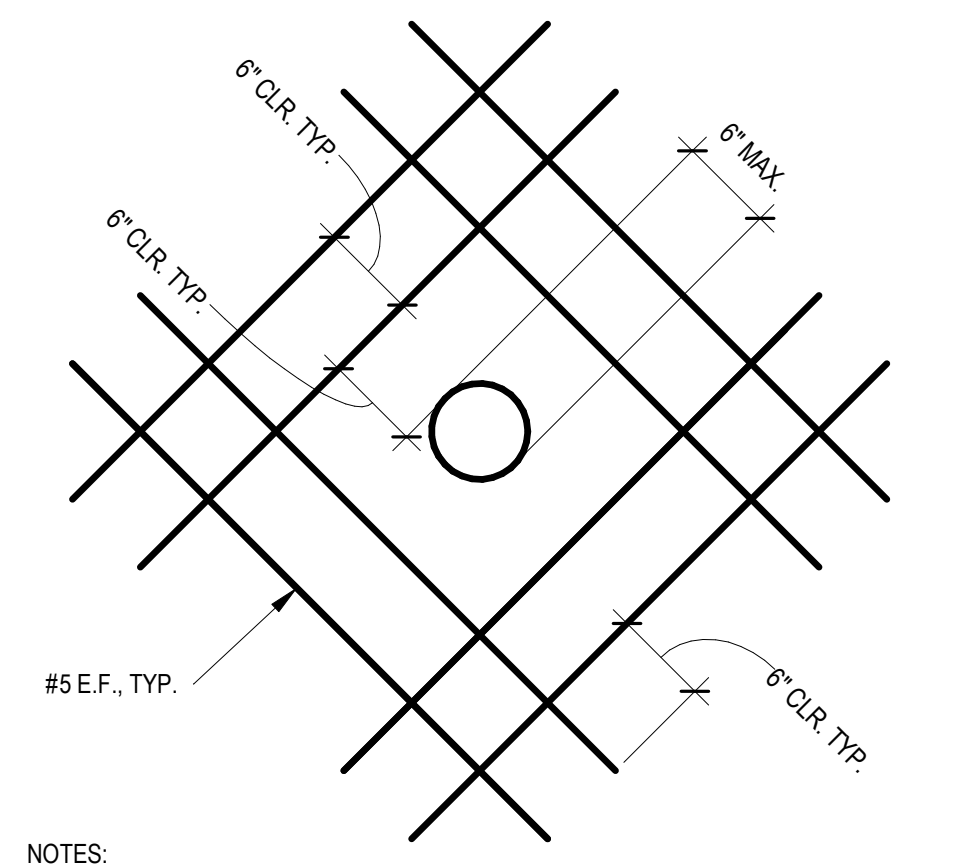
NOTE:
1. REFER TO PLAN AND WALL SECTIONS FOR ORIENTATION OF REINFORCEMENT.
2. REFER TO REINF. SPLICE LENGTH SCHEDULE FOR SPLICE LENGTHS.

CONCRETE WALL & MAT SLAB INTERSECTION
1" = 1'-0"



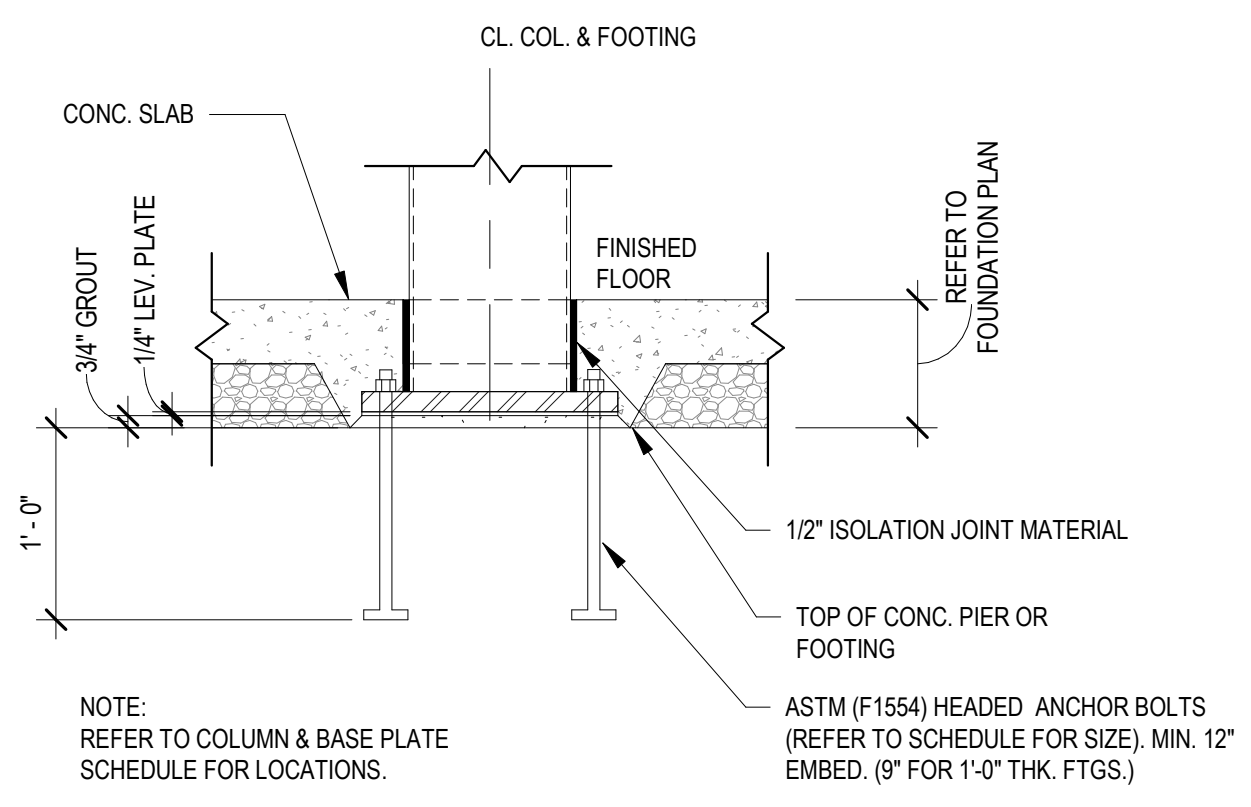
NOTE:
CONTRACTOR SHALL FIELD VERIFY BEARING CAPACITY PRIOR TO POURING SLAB.

CONCRETE MAT SLAB CONSTRUCTION
1" = 1'-0"



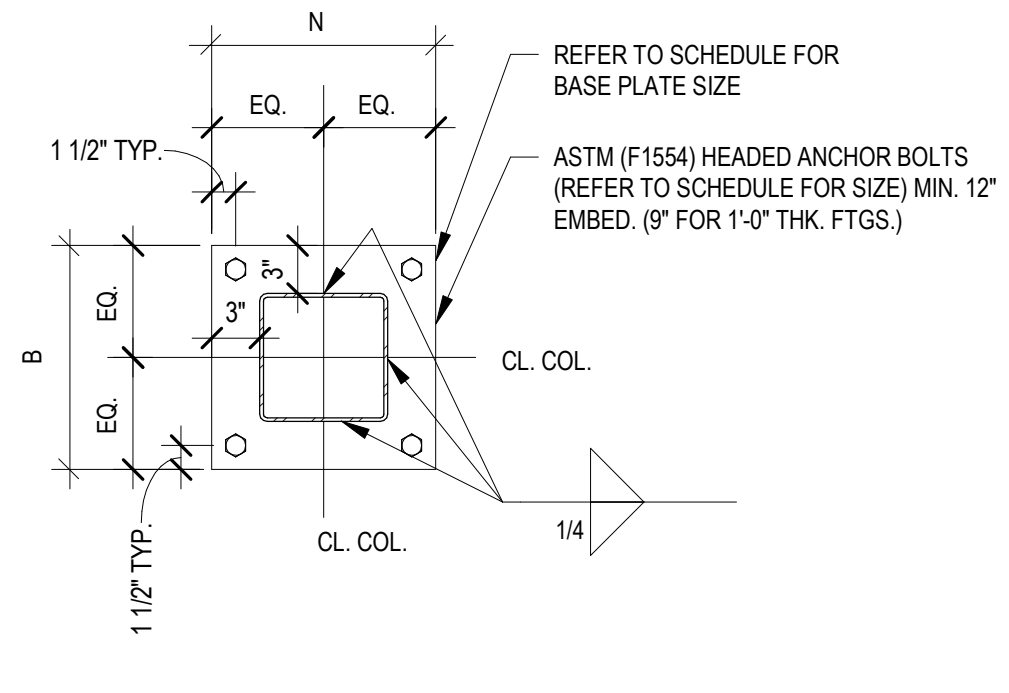
NOTE:
1. REINFORCING SHOWN IS IN ADDITION TO ANY REINFORCING INDICATED FOR THE WALL OR FLOOR SLAB.
2. THIS DETAIL APPLIES TO ALL OPENINGS IN WALLS OR FLOOR SLABS UP TO 6" IN SIZE (SQUARE OR DIA.).
3. PROVIDE HALF OF THE INTERRUPTED BARS (HORIZONTAL & VERTICAL) ON EACH SIDE OF THE OPENING, WITH THE BARS EXTENDING A FULL SPLICE LENGTH PLUS 3" BEYOND BOTH SIDES OF THE OPENING.

CONCRETE FLOOR SLAB/WALL PIPE PENETRATION REINFORCEMENT DETAIL
1" = 1'-0"



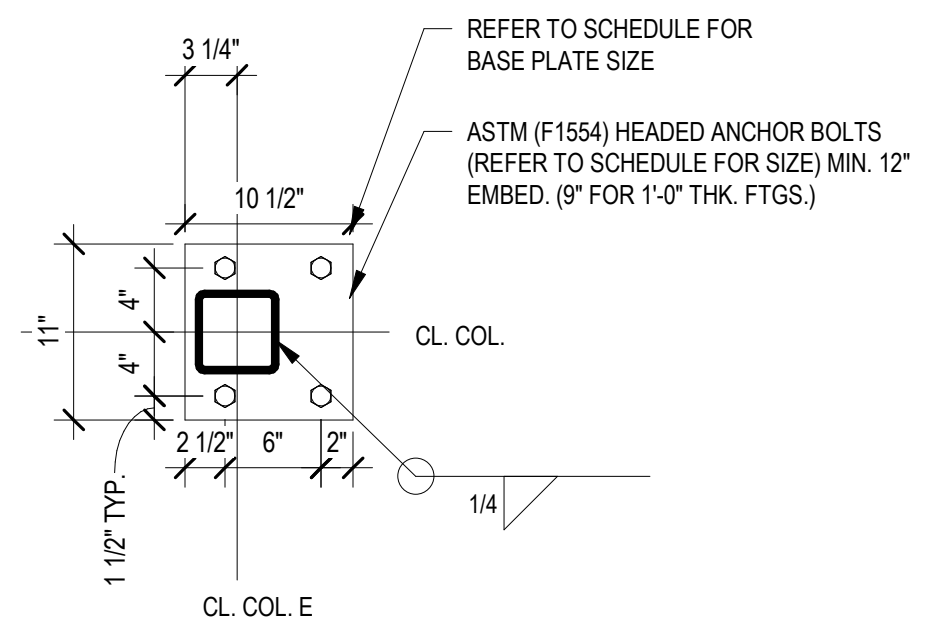
NOTE:
REFER TO COLUMN & BASE PLATE SCHEDULE FOR LOCATIONS.

INTERIOR HSS COLUMN BASE
1" = 1'-0"



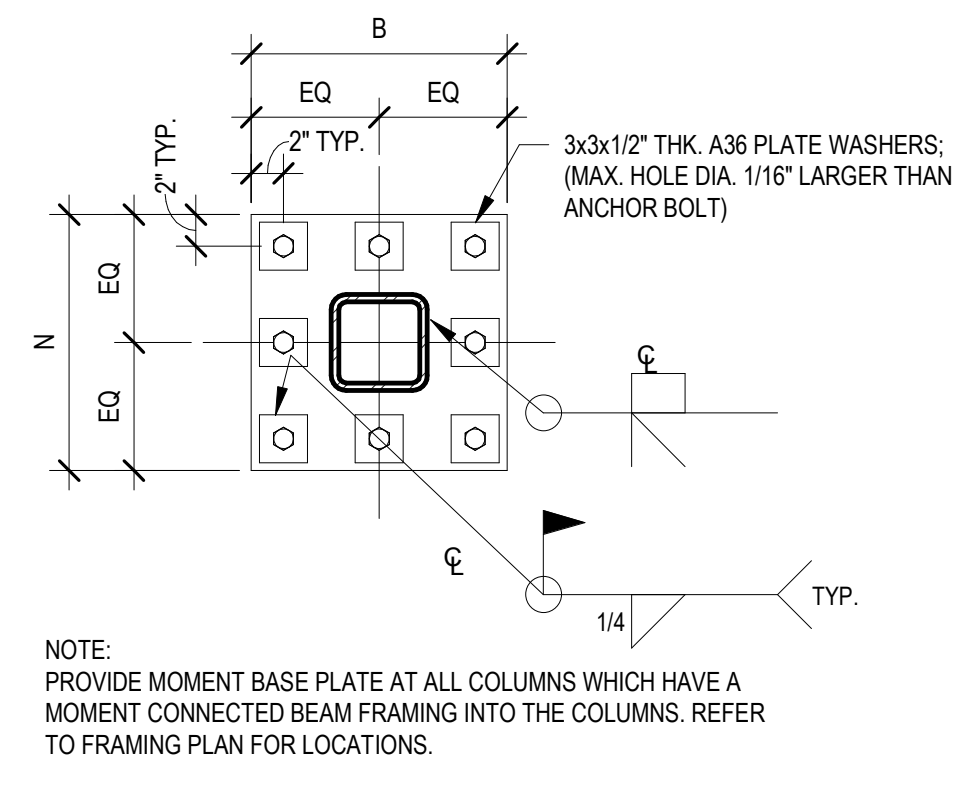
REFER TO SCHEDULE FOR BASE PLATE SIZE
ASTM (F1554) HEADED ANCHOR BOLTS (REFER TO SCHEDULE FOR SIZE) MIN. 12" EMBED. (9" FOR 1'-0" THK. FTGS.)

HSS TUBE COLUMN BASE PLATE
1" = 1'-0"



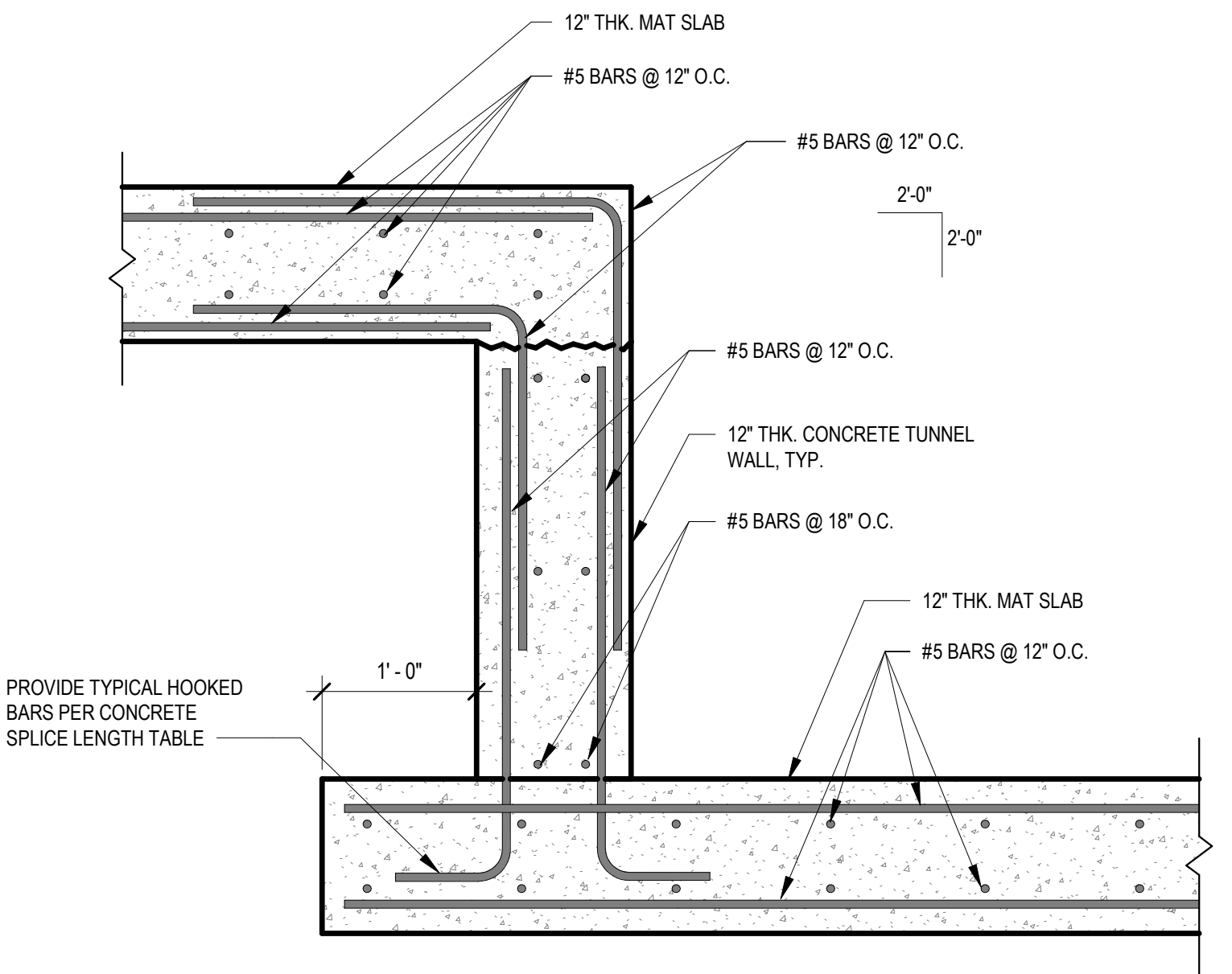
REFER TO SCHEDULE FOR BASE PLATE SIZE
ASTM (F1554) HEADED ANCHOR BOLTS (REFER TO SCHEDULE FOR SIZE) MIN. 12" EMBED. (9" FOR 1'-0" THK. FTGS.)

HSS TUBE COLUMN BASE PLATE @E
1" = 1'-0"



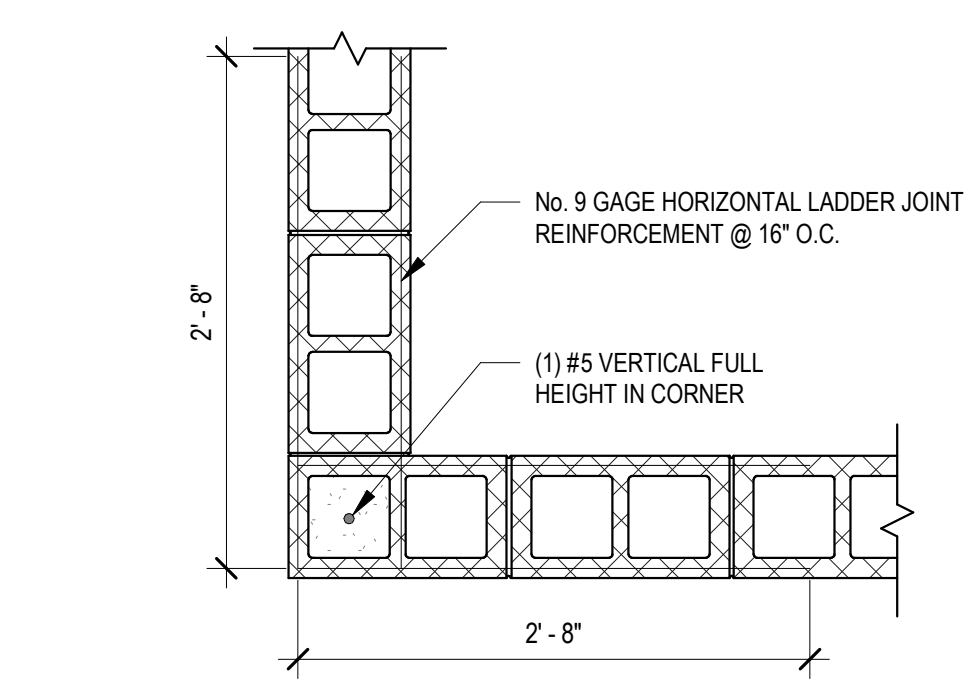
NOTE:
PROVIDE MOMENT BASE PLATE AT ALL COLUMNS WHICH HAVE A MOMENT CONNECTED BEAM FRAMING INTO THE COLUMNS. REFER TO FRAMING PLAN FOR LOCATIONS.

TYPICAL HSS MOMENT BASE PLATE
1" = 1'-0"

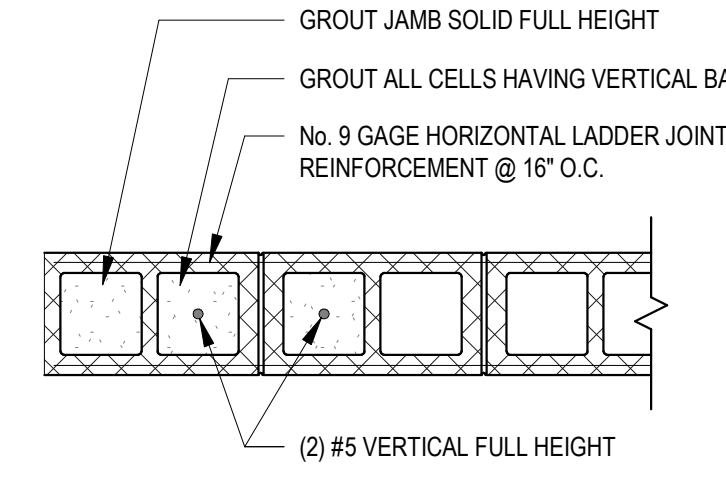


PROVIDE TYPICAL HOOKED BARS PER CONCRETE SPLICE LENGTH TABLE

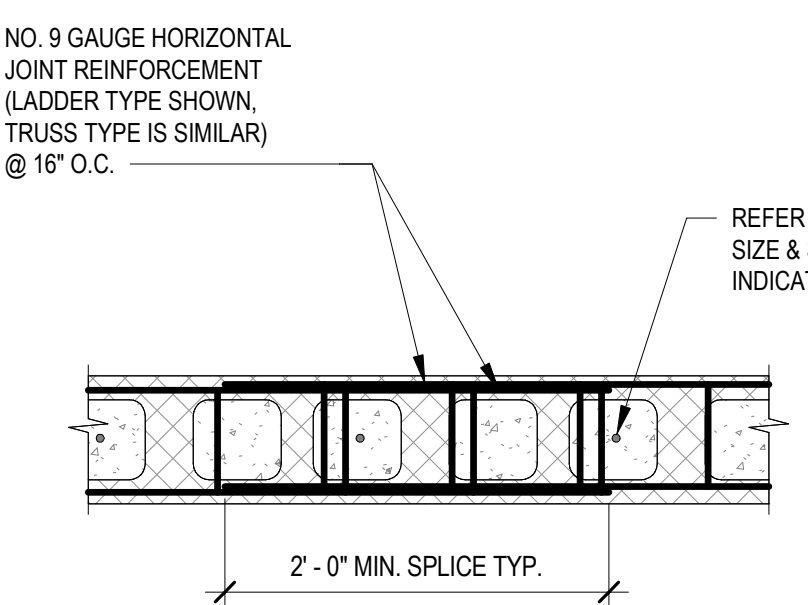
TYPICAL STEP IN TUNNEL FLOOR DETAIL
1" = 1'-0"



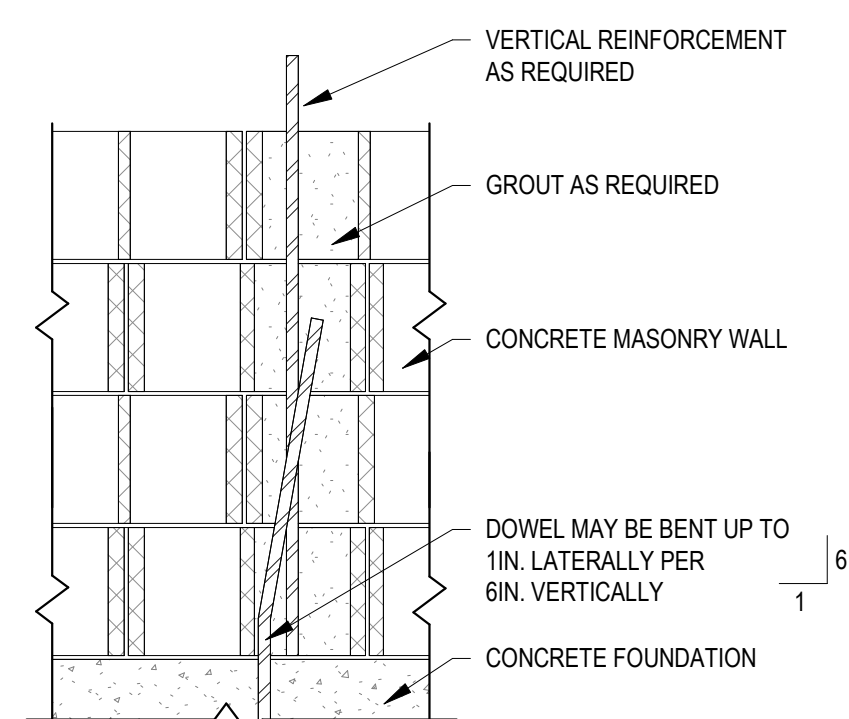
TYPICAL MASONRY WALL REINFORCING DETAIL
1" = 1'-0"



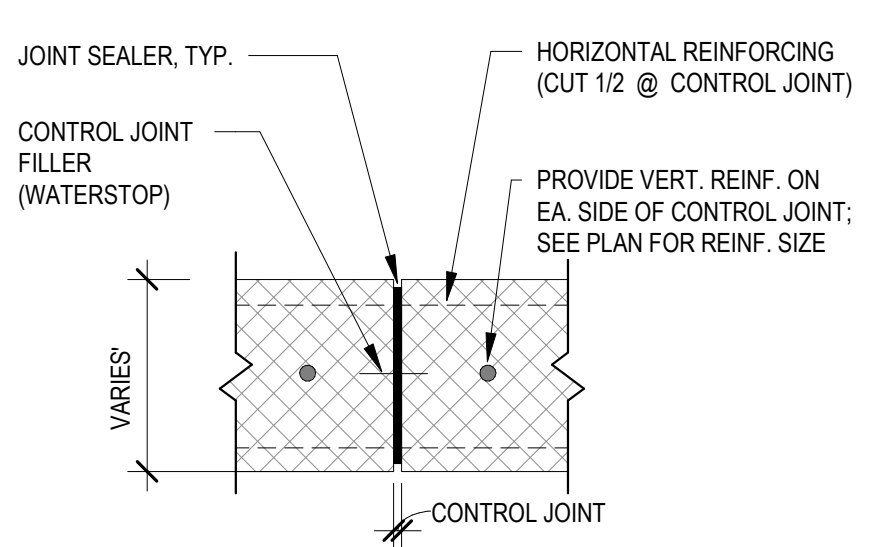
MASONRY WALL HORIZONTAL REINFORCEMENT DETAIL
1" = 1'-0"



VERTICAL REINFORCEMENT LOCATION
1" = 1'-0"



FOUNDATION DOWEL ALIGNMENT DETAIL
1" = 1'-0"



NOTE:
1. PROVIDE CONTROL JOINTS AS INDICATED IN PLAN AND IN THE CONCRETE MASONRY CONSTRUCTION SECTION OF THE GENERAL SPECIFICATIONS
2. HORIZ. REINF. CONTINUOUS THROUGH JOINT ONLY AT SILL OR LINTEL

MASONRY WALL CONTROL JOINT
1" = 1'-0"

7/27/2023 5:39:32 PM
BIM 360://620-334 New Community Living Center/620301500_2014
VA FORM 08 - 6231

Revisions:	Date:

CONSULTANT

NORRIS DESIGN
Landscape Architect
418 North Toole Avenue
Tucson, AZ 85711
(520) 622-9565
Josh Orth, PLA

HINMAN
Protective Design Specialist
240 West 35th St, Suite 1004
New York, NY 10001
(212) 967-4890
Corinne Tan, SE

C.S. Davidson, Inc.
Structural
315 West James Street, Suite 102
Lancaster, PA 17603
(717) 481-2991
Jason Vannoy, SE, PE

MES GROUP
MEP
550 North Rex Street, Suite 203
Tampa, FL 33609
(813) 289-4700
Nicholas Stephenson, PE

ARCHITECT/ENGINEER OF RECORD

TRIPLE C - THE A/E GROUP
201 E. Jefferson Street, Suite 200
Syracuse, NY 13202
(315) 484-9958
Mat Perkins

STAMP
STATE OF NEW YORK
MURRAY C. WERNER
093033
PROFESSIONAL ENGINEER
5/09/2022 License valid through 11/30/2024

Office of Construction and Facilities Management

VA U.S. Department of Veterans Affairs

Drawing Title
FOUNDATION DETAILS

Approved:

Phase
ISSUED FOR CONSTRUCTION

FULLY SPRINKLERED

Project Title
NEW COMMUNITY LIVING CENTER

Location
2094 Albany Post Road, Montrose, NY 10548

Issue Date
05/09/2022

Checked
WCW

Drawn
SIR

Project Number
620-334

Building Number
CLC

Drawing Number
S-202