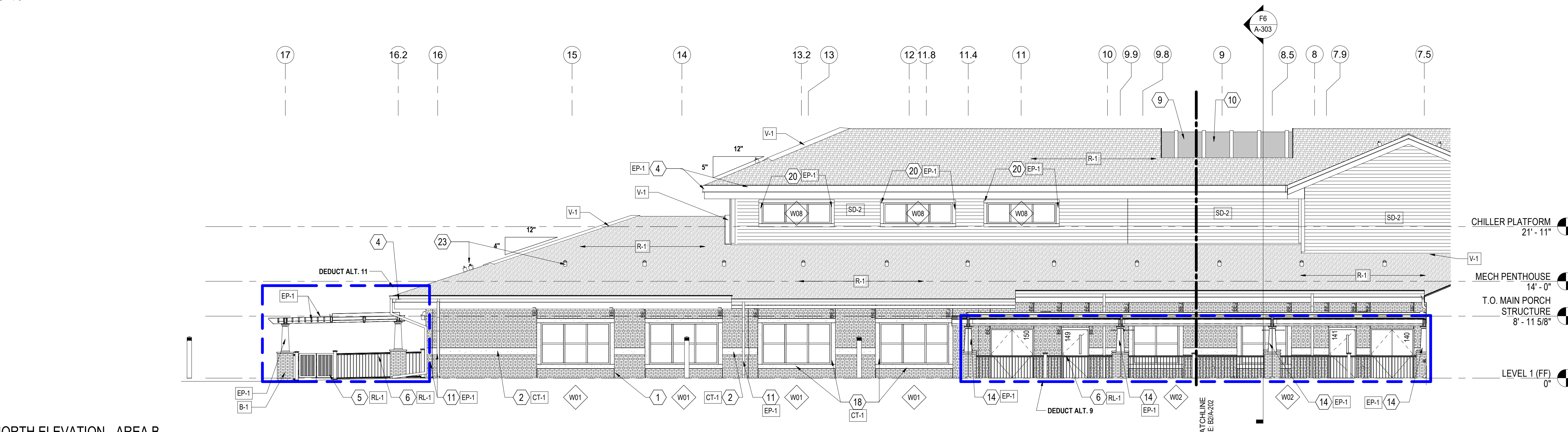
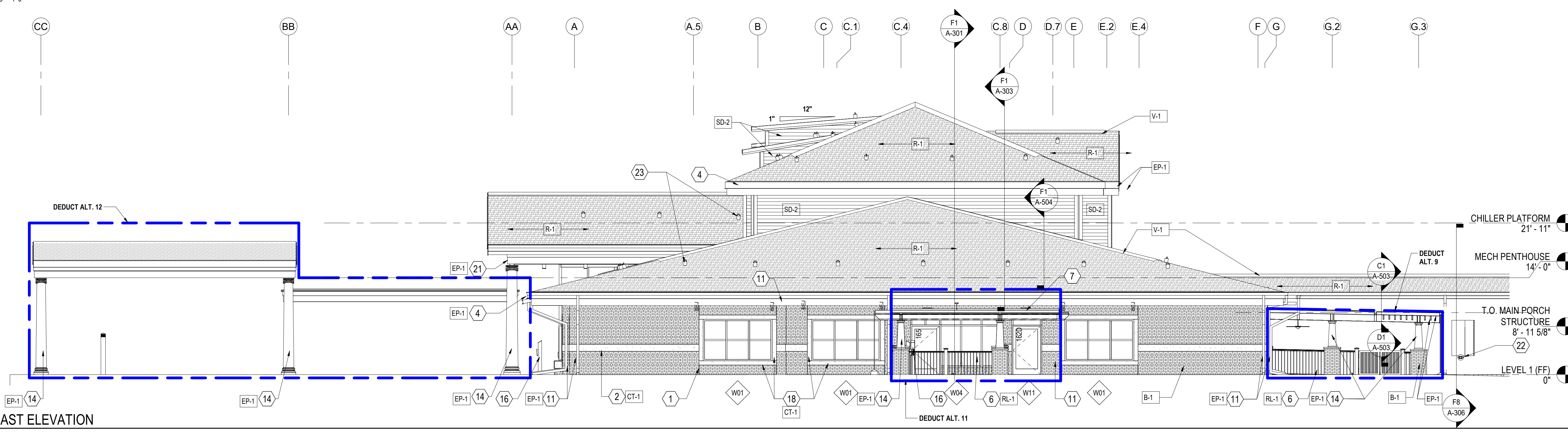


B2 NORTH ELEVATION - AREA A
1/8" = 1'-0"



D4 NORTH ELEVATION - AREA B
1/8" = 1'-0"



F5 EAST ELEVATION
1/8" = 1'-0"

KEYNOTES	
1	CONTROL JOINT, TYP
2	CAST STONE BAND, TYP
3	LOUVER
4	GUTTER, TYP
5	GATE TO PORCH
6	METAL RAILING, TYP
7	EXTERIOR LIGHTING: SEE ELECTRICAL DRAWINGS FOR MORE INFORMATION
8	COVERED WALKWAY TO BUILDING 6
9	DECORATIVE ROOF ELEMENT
10	OPEN TO EXTERIOR, TYP
11	DOWNSPOUT
12	EXPOSED REMOVABLE STRUCTURE, RE: STRUCT
13	BIRD NETTING MOUNTED TO REMOVABLE STRUCTURE: SEE A-502
14	PREMANUFACTURED FIBERGLASS COLUMN COVER, TYP
15	CEILING FAN: SEE ELECTRICAL DRAWINGS FOR MORE INFORMATION
16	PEDESTAL FOR DOOR PUSH PLATE AND CARD READER: SEE ELECTRICAL FOR MORE INFORMATION
17	DOWNSPOUT
18	CAST STONE WINDOW SURROUND, TYP
19	ROOF EXPANSION JOINT: 1 1/2" EXPANSION JOINT MATERIAL MUST BE APPROVED BY ROOFING SYSTEM MANUFACTURER
20	SIDING MATERIAL WINDOW SURROUND, TYP
21	CANOPY 2: REFER TO ROOF PLANS FOR MORE INFORMATION
22	FIRE DEPARTMENT CONNECTION
23	PAINT TIE-BACKS TO MATCH SHINGLES, REFER TO LEGEND FOR MORE INFORMATION

ARCHITECTURAL MATERIALS LEGEND		
OR APPROVED EQUAL. MATERIALS ARE PROVIDED AS BASIS OF DESIGN CONTRACTOR TO SUBMIT FINAL COLORS FOR OWNER APPROVAL		
SYMBOL	HATCH PATTERN	MATERIAL IMAGE
B-1	[Hatch]	BRICK WATSON TOWN BRICK COMPANY HANDCRAFTED COLONIAL - BRADFORD MORTAR - SPEC-MIX N219
CT-1	[Hatch]	CAST STONE ARCHITECTURAL CAST STONE COLOR: LIGHT BUFF
SD-2	[Hatch]	FIBER CEMENT SIDING SMOOTH PANEL SIDING COLOR: MATCH SHERWIN WILLIAMS CANVAS TAN SW7531*
R-1	[Hatch]	ASPHALT SHINGLE ROOFING OWENS CORNING TRU DEFINITION DURATION + COLOR: QUARRY GRAY
R-2	[Hatch]	TPO ROOFING CARLISLE SYNTec SYSTEMS* COLOR: SLATE GRAY
V-1	[Hatch]	RIDGE AND HIP VENT PAC CLAD + COLOR: MUSKET GRAY
EP-1	[Hatch]	EXTERIOR PAINT SHERWIN WILLIAMS + COLOR: DOVER WHITE SW6385
RL-1	[Hatch]	EXTERIOR RAILING TIMBER TECH* COLOR: WHITE

DEDUCTIVE ALTERNATES:	
DEDUCTIVE ALTERNATES ARE CASCAADING AND MUST BE EXERCISED IN THE ORDER PRESENTED) FOR A DETAILED DESCRIPTION OF EACH DEDUCTIVE ALTERNATE REFER TO COVER SHEET 0000	
DEDUCTIVE ALTERNATE #1: REDUCE WATER AND ICE SHIELD COVERAGE	
DEDUCTIVE ALTERNATE #2: ELIMINATE TUNNEL (EAST LEG)	
DEDUCTIVE ALTERNATE #3: ELIMINATE FAUX WINDOWS AT CLEARSTORY	
DEDUCTIVE ALTERNATE #4: ELIMINATE WORK AT 88 CORRIDOR	
DEDUCTIVE ALTERNATE #5: ELIMINATE CONCRETE	
DEDUCTIVE ALTERNATE #6: ELIMINATE LANDSCAPE	
DEDUCTIVE ALTERNATE #7: REDUCE PLATFORM AT CHILLER	
DEDUCTIVE ALTERNATE #8: ELIMINATE WVR SECURITY	
DEDUCTIVE ALTERNATE #9: ELIMINATE LARGE PORCH	
DEDUCTIVE ALTERNATE #10: ELIMINATE SMALL PORCH A	
DEDUCTIVE ALTERNATE #11: ELIMINATE SMALL PORCH B	
DEDUCTIVE ALTERNATE #12: ELIMINATE ENTRANCE CANOPY	
DEDUCTIVE ALTERNATE #13: ELIMINATE FENCE/FAUX ROOFS AT RESIDENT ROOMS	
DEDUCTIVE ALTERNATE #14: ELIMINATE PATIENT LIFTS TRACK EXTENSIONS INTO RESIDENT RESTROOMS	
DEDUCTIVE ALTERNATE #15: REDUCE THE POROUS ASPHALT / PARKING / PORTION OF DRIVE ENTRANCE	
DEDUCTIVE ALTERNATE #16: ELIMINATE EXTERIOR SIGNAGE	

7/27/2021 3:48:44 PM
BIM 360://620-334 New Community Living Center/620-334-CLC-Act1.rvt

Revisions:	Date:

CONSULTANT

NORRIS DESIGN
Landscape Architect
418 North Toole Avenue
Tucson, AZ 85701
(520) 622-9565
Josh Orth, PLA

HINMAN
Protective Design Specialist
240 West 35th St, Suite 1004
New York, NY 10001
(212) 967-4890
Corinne Tan, SE

C.S. Davidson, Inc.
Structural
315 West James Street, Suite 102
Lancaster, PA 17603
(717) 481-2991
Jason Vannoy, SE, PE

MES GROUP
MEP
550 North Reno Street, Suite 203
Tampa, FL 33609
(813) 289-4700
Nicholas Stephenson, PE

ARCHITECT/ENGINEER OF RECORD

TRIPLE C - THE A/E GROUP
201 E. Jefferson Street, Suite 200
Syracuse, NY 13202
(315) 484-9958
Mat Perkins

STAMP
OFFICE OF MATTHEW J. PERKINS
REGISTERED ARCHITECT
197005

TRIPLE C - THE A/E GROUP
A MULTI-DISCIPLINE COMPANY

Office of Construction and Facilities Management

VA U.S. Department of Veterans Affairs

Drawing Title
ARCHITECTURAL EXTERIOR ELEVATIONS

Approved: _____

Phase
ISSUED FOR CONSTRUCTION

FULLY SPRINKLERED

Project Title
NEW COMMUNITY LIVING CENTER

Location
2094 Albany Post Road, Montrose, NY 10548

Issue Date
05/09/2022

Checked
M. PERKINS

Drawn
K. HUTCHINSON

Project Number
620-334

Building Number
CLC

Drawing Number
A-202