

A

B

C

D

E

F

A

B

C

D

E

F

ARCHITECTURAL SYMBOL LEGEND

	PROPOSED EXTERIOR WALL. SEE WALL SECTIONS
	INTERIOR STUD FRAMED WALL. SEE WALL TYPES
	AREA OF NO WORK, FACILITY TO REMAIN OPERATIONAL
	1 HR FIRE RATED PARTITION
	2 HR FIRE RATED PARTITION
	SMOKE RATED PARTITION / SMOKE BARRIER / COMPARTMENT
	1 HR FIRE AND SMOKE BARRIER
	2 HR FIRE AND SMOKE BARRIER
	VAVA ITEM - VA SUPPLIED & INSTALLED
	VA/CC OR VC ITEM - VA SUPPLIED & CONTRACTOR INSTALLED
	CC/CC ITEM - CONTRACTOR SUPPLIED & INSTALLED
	A1000 FURNITURE, FIXTURE, & EQUIPMENT INDICATOR

KEYNOTES

- FURNITURE IS NIC
- GW/S SOFFIT
- PATIENT LIFT. COORDINATE POWER AND STRUCTURAL AS REQUIRED. DEDUCT ALT.14: ELIMINATE PATIENT LIFTS EXCEPT AT BARIATRIC ROOMS
- ALL EXPOSED CORNERS SHALL HAVE A 2" RADIUS CORNER, TYP.
- REFER TO SHEET A-750 FOR TYPICAL MOUNTING HEIGHTS
- CONTRACTOR TO PROVIDE TV AND MOUNTING HARDWARE; REFER TO EQUIPMENT PLANS FOR MORE INFORMATION
- ALL EXPOSED CORNERS SHALL HAVE A 2" RADIUS CORNER, TYP.

DEDUCTIVE ALTERNATES:

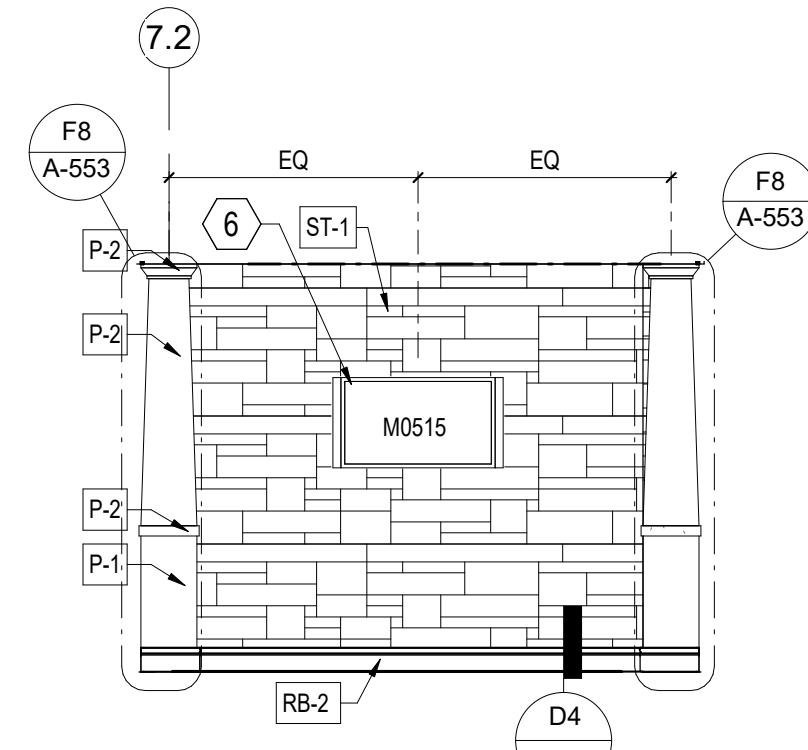
- (DEDUCTIVE ALTERNATES ARE CASCADING AND MUST BE EXERCISED IN THE ORDER PRESENTED) FOR A DETAILED DESCRIPTION OF EACH DEDUCTIVE ALTERNATE REFER TO COVER SHEET G1000
- DEDUCTIVE ALTERNATE #1: REDUCE WATER AND ICE SHIELD COVERAGE
 - DEDUCTIVE ALTERNATE #2: ELIMINATE TUNNEL (EAST LEG)
 - DEDUCTIVE ALTERNATE #3: ELIMINATE FAUX WINDOWS AT CLEARSTORY
 - DEDUCTIVE ALTERNATE #4: ELIMINATE WORK AT BR CORRIDOR
 - DEDUCTIVE ALTERNATE #5: ELIMINATE CONCRETE
 - DEDUCTIVE ALTERNATE #6: ELIMINATE LANDSCAPE
 - DEDUCTIVE ALTERNATE #7: REDUCE PLATFORM AT CHILLER
 - DEDUCTIVE ALTERNATE #8: ELIMINATE NVSR SECURITY
 - DEDUCTIVE ALTERNATE #9: ELIMINATE LARGE PORCH
 - DEDUCTIVE ALTERNATE #10: ELIMINATE SMALL PORCH A
 - DEDUCTIVE ALTERNATE #11: ELIMINATE SMALL PORCH B
 - DEDUCTIVE ALTERNATE #12: ELIMINATE ENTRANCE CANOPY
 - DEDUCTIVE ALTERNATE #13: ELIMINATE FENCE FAUX ROOFS AT RESIDENT ROOMS
 - DEDUCTIVE ALTERNATE #14: ELIMINATE PATIENT LIFT'S TRACK EXTENSIONS INTO RESIDENT RESTROOMS
 - DEDUCTIVE ALTERNATE #15: REDUCE THE POROUS ASPHALT / PARKING / PORTION OF DRIVE ENTRANCE
 - DEDUCTIVE ALTERNATE #16: ELIMINATE EXTERIOR SIGNAGE

INTERIOR FINISH SYMBOLS

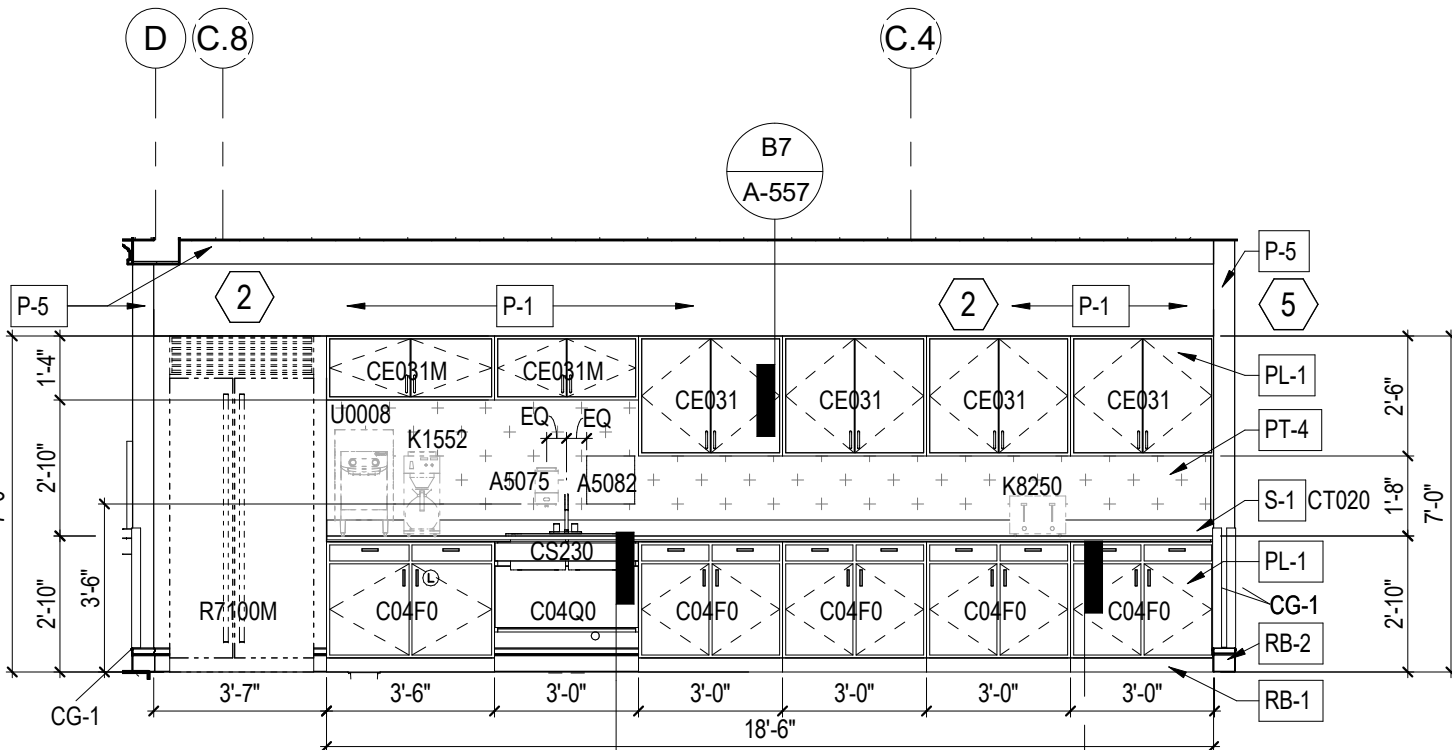
	MATERIAL FLOOR CHANGE (REFER TO IN501 FOR TRANSITION DETAILS)
	PATTERN CHANGE (REFER TO IN501 FOR TRANSITION DETAILS)
	DIRECTION OF FINISH
	CORNER GUARD LOCATION
	PAINT COLOR / WALL FINISHES
	WALL BASE / FLOOR FINISH TAG
	MILLWORK LOCK LOCATION
	WALL BASE / WALL FINISH TAG

FINISH ABBREVIATIONS

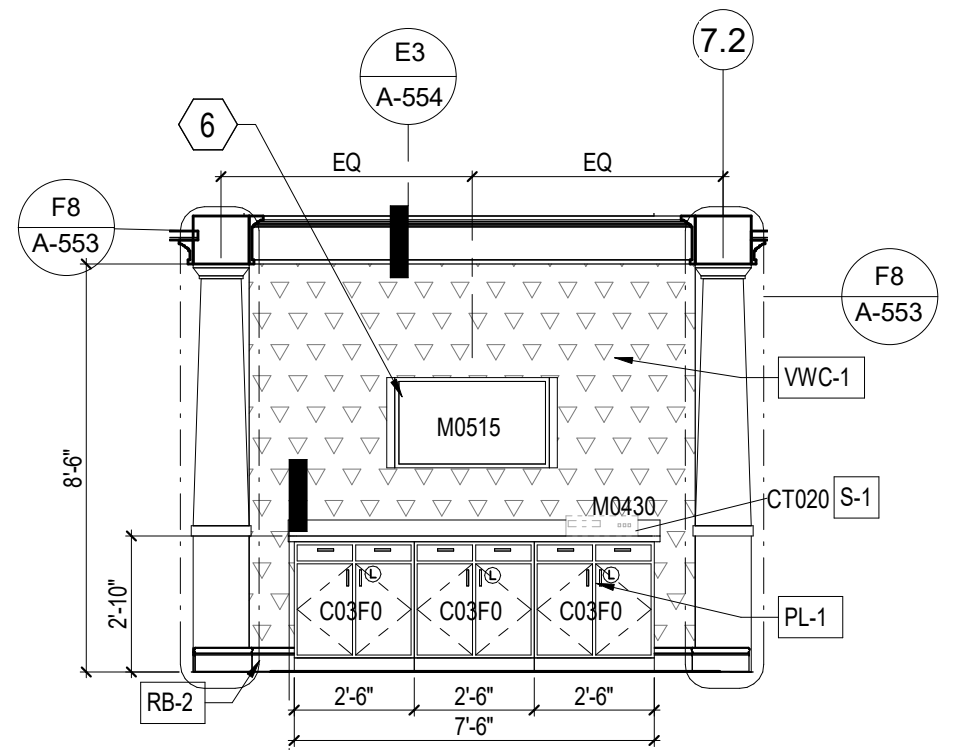
ABBREVIATION	FINISH TYPE
AT	ACOUSTICAL CEILING TILE
AWP	ACOUSTICAL WALL PANEL
C	CONCRETE
CC	CUBICLE CURTAIN TRACK
CG	CORNER GUARD
CHR	CHAIR RAIL
CW	CATWALK
HR	HAND RAIL
LVT	LUXURY VINYL TILE
MB	MEMORY BOX
PL	PAINT
PL	PLASTIC LAMINATE
PT	PORCELAIN TILE
RB	RESILIENT BASE
RWC	RIGID WALL COVERING
RWS	ROLLER SHADES
S	SOLID SURFACE
SD	SIDING
ST	STACKED STONE
TR	TRIM
VWC	VINYL WALLCOVERING
WD	PLYWOOD
WFT	WALL FINISH TYPE



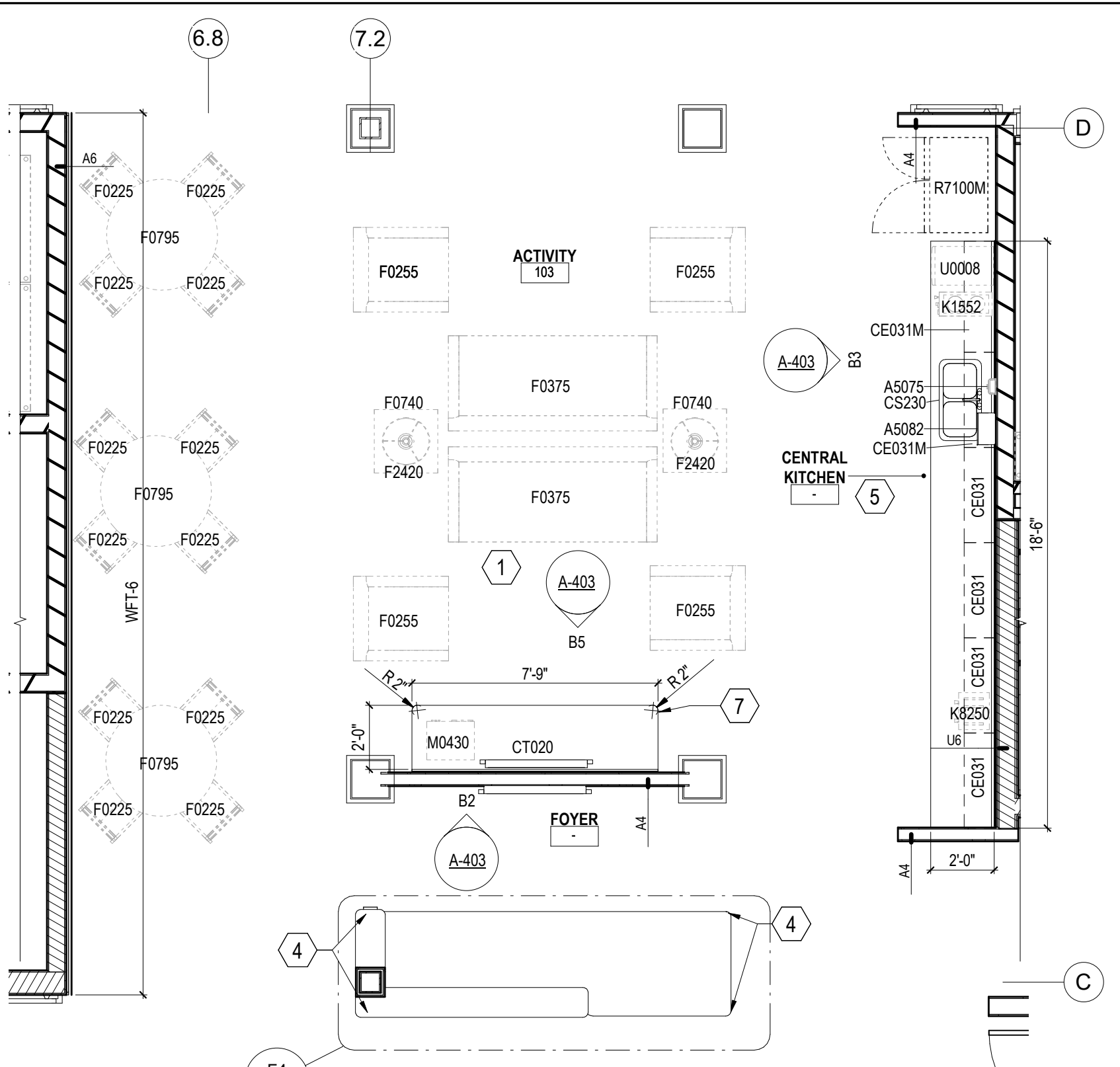
B2 CHECK IN - NORTH ELEVATION
1/4" = 1'-0" (NOTE: SEE A-401 FOR JSN SCHEDULE)



B3 CENTRAL KITCHEN - EAST ELEVATION
1/4" = 1'-0" (NOTE: SEE A-401 FOR JSN SCHEDULE)



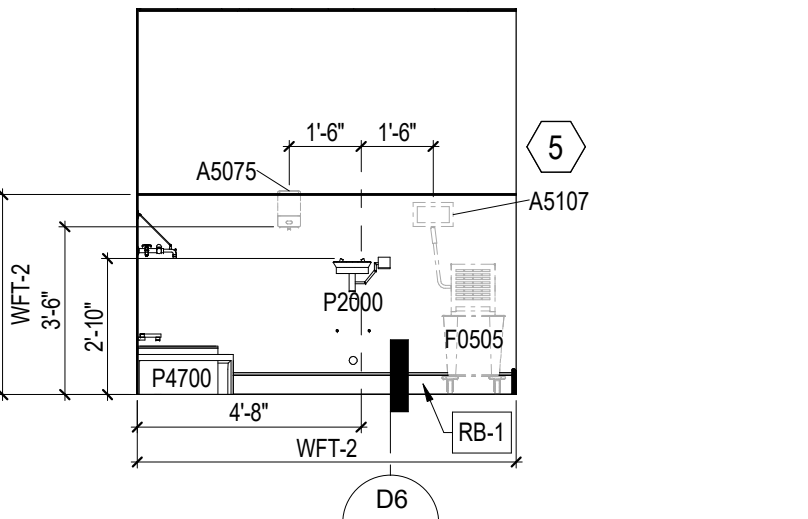
B5 ACTIVITY - SOUTH ELEVATION
1/4" = 1'-0" (NOTE: SEE A-401 FOR JSN SCHEDULE)



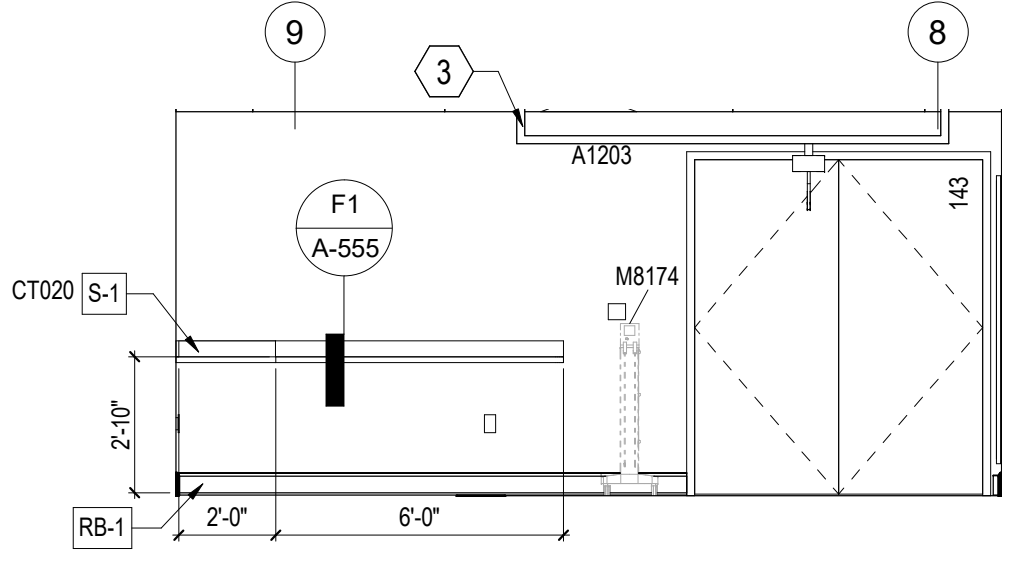
B7 ACTIVITY AREA
1/4" = 1'-0" (NOTE: SEE A-401 FOR JSN SCHEDULE)



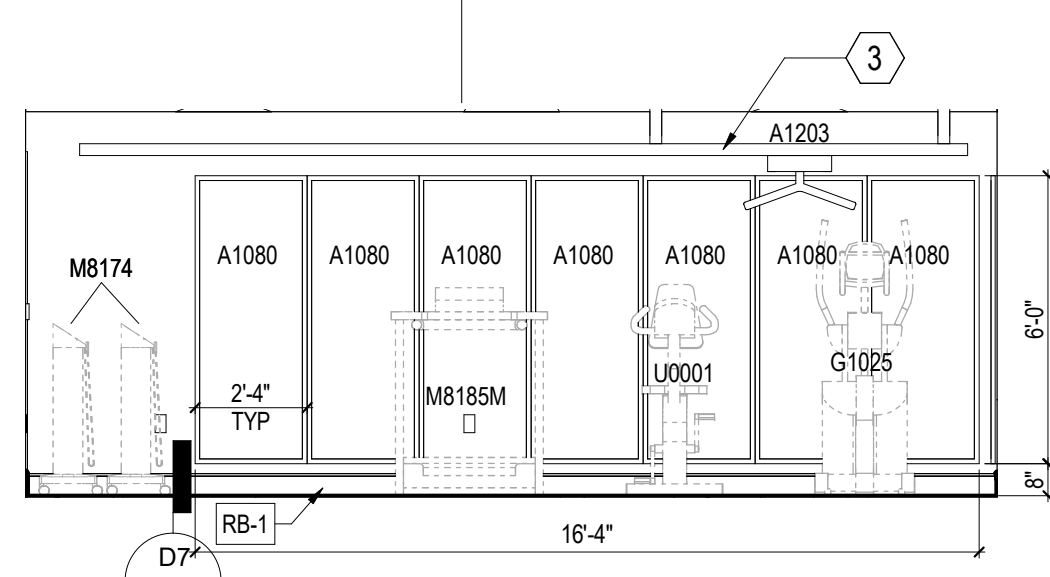
RENDERING, CHECK-IN AREA
RENDERINGS ARE PROVIDED TO ILLUSTRATE DESIGN INTENT ONLY AND SHALL BE CONSIDERED REFERENCE MATERIAL. DESIGN DRAWINGS AND SPECIFICATIONS SHALL BE FOLLOWED FOR ALL CONSTRUCTION RELATED ITEMS PERTAINING TO THIS SCOPE OF WORK.



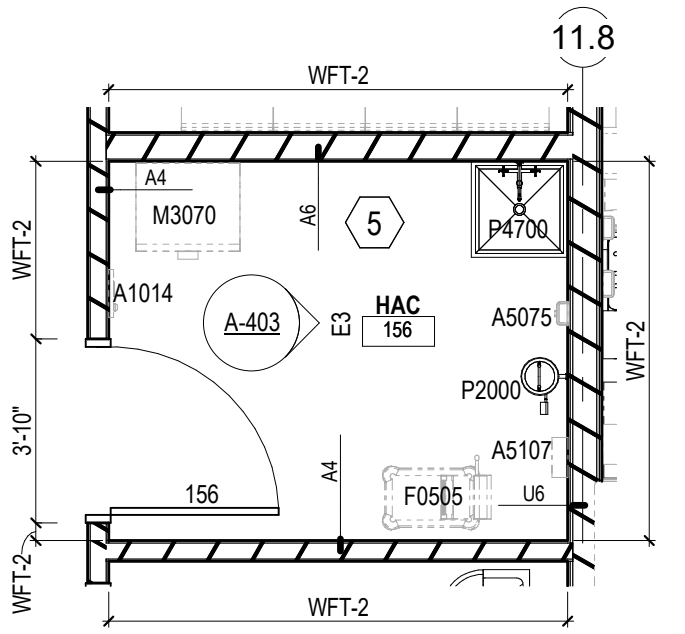
E3 HAC - EAST ELEVATION
1/4" = 1'-0" (NOTE: SEE A-401 FOR JSN SCHEDULE)



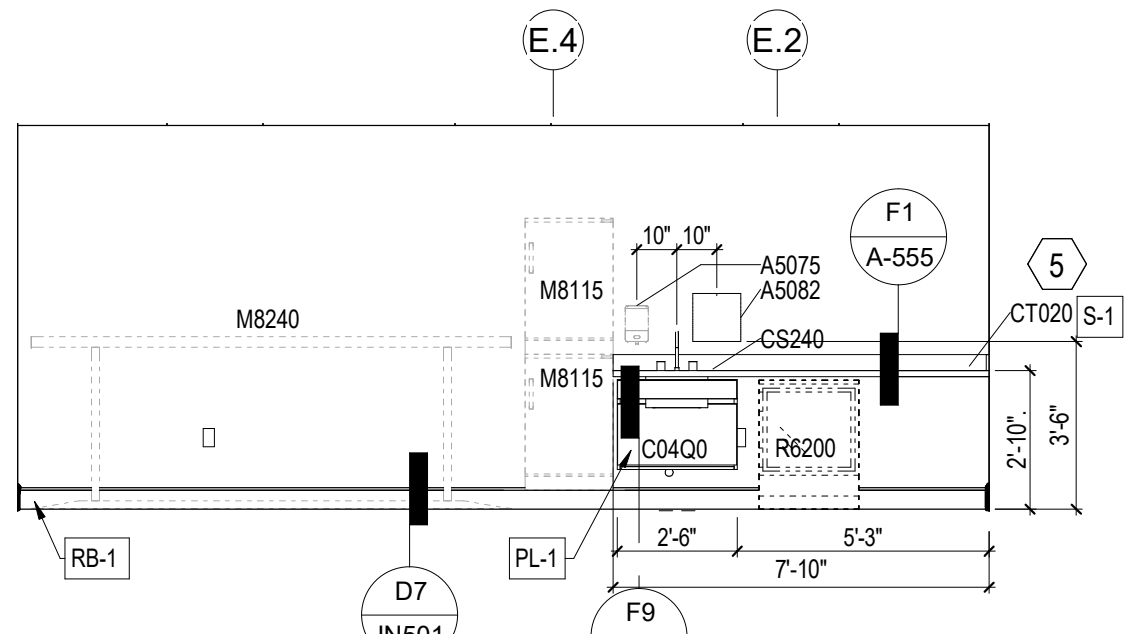
D5 PT/KT - SOUTH ELEVATION
1/4" = 1'-0" (NOTE: SEE A-401 FOR JSN SCHEDULE)



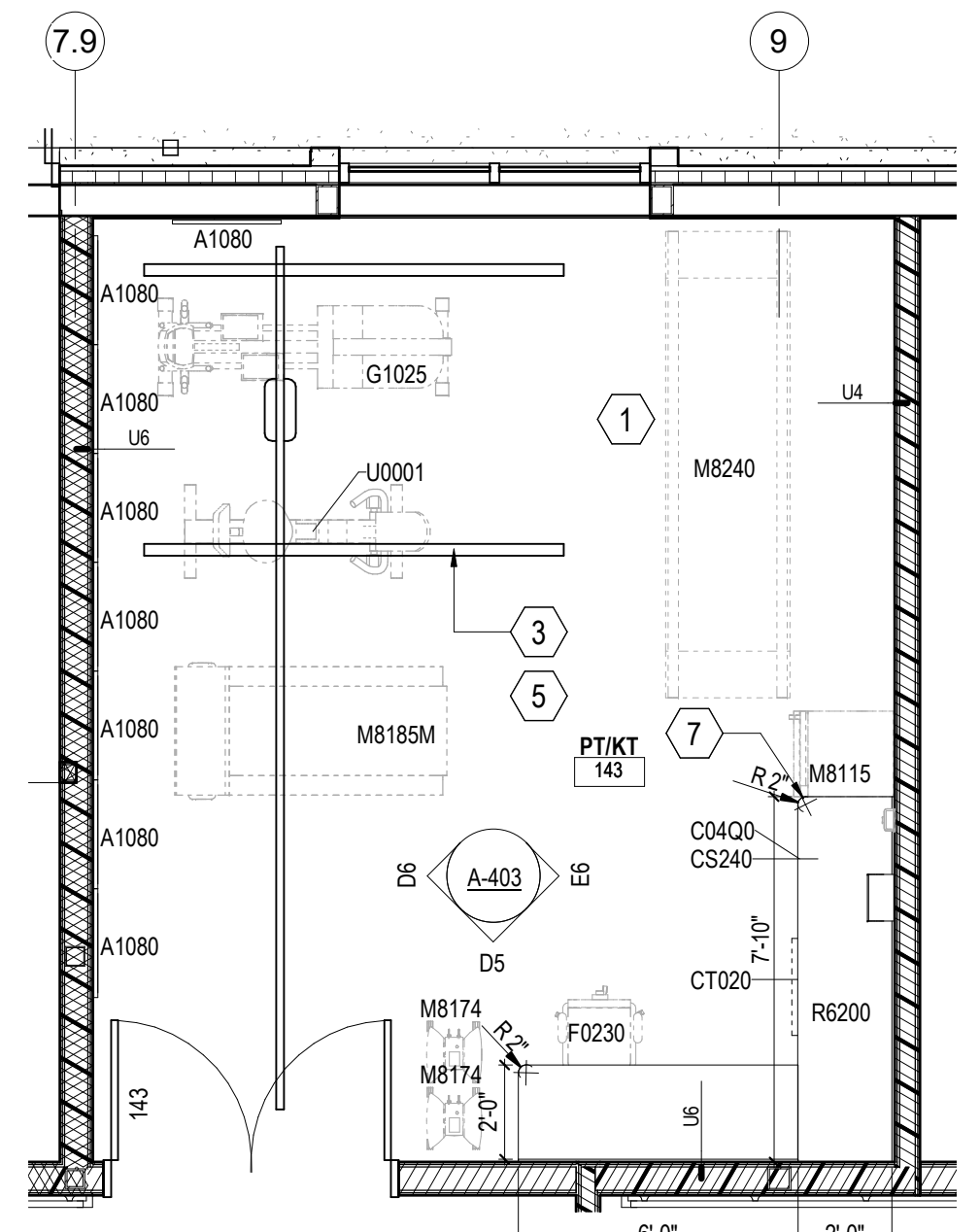
D6 PT/KT - WEST ELEVATION
1/4" = 1'-0" (NOTE: SEE A-401 FOR JSN SCHEDULE)



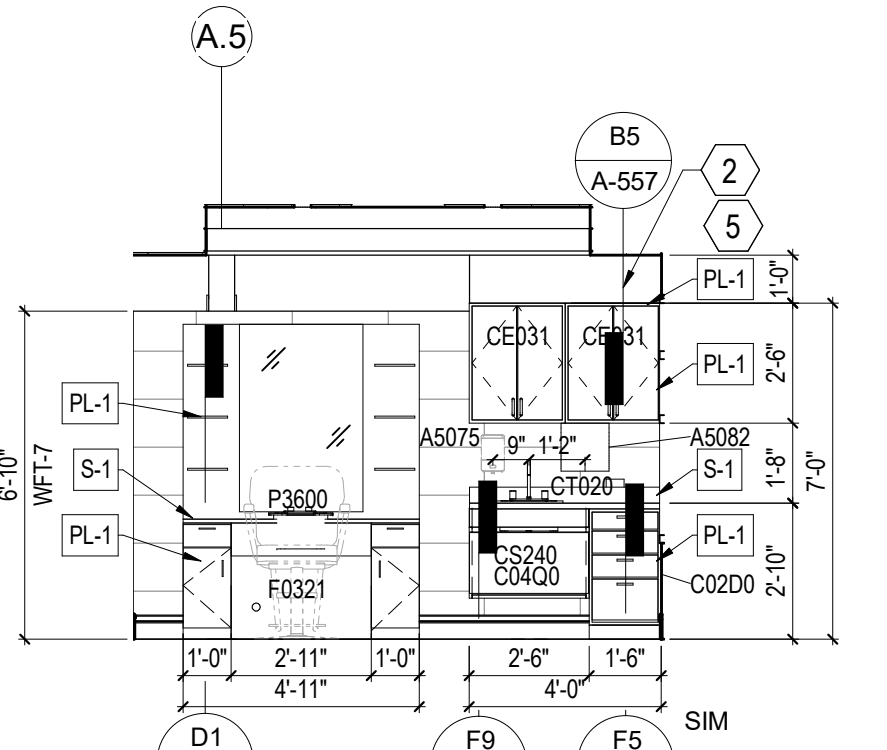
E5 HAC
1/4" = 1'-0" (NOTE: SEE A-401 FOR JSN SCHEDULE)



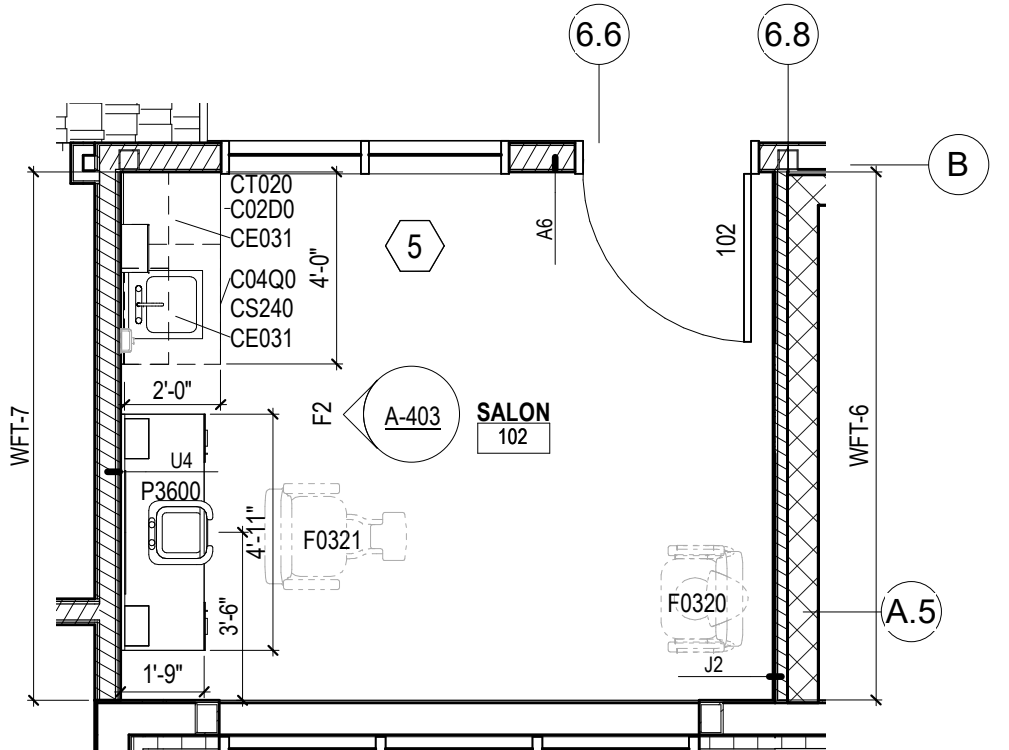
E6 PT/KT - EAST ELEVATION
1/4" = 1'-0" (NOTE: SEE A-401 FOR JSN SCHEDULE)



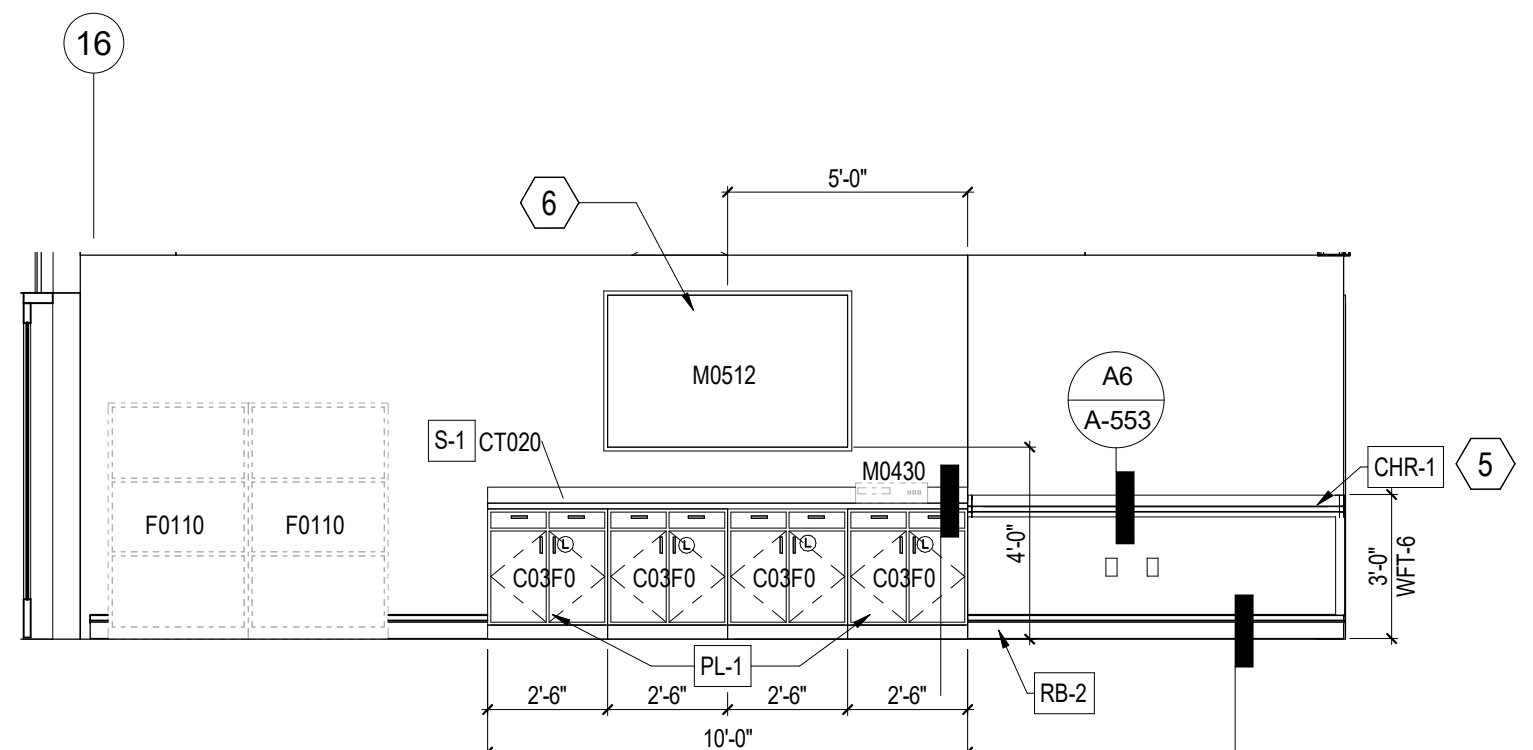
E8 PT/KT
1/4" = 1'-0" (NOTE: SEE A-401 FOR JSN SCHEDULE)



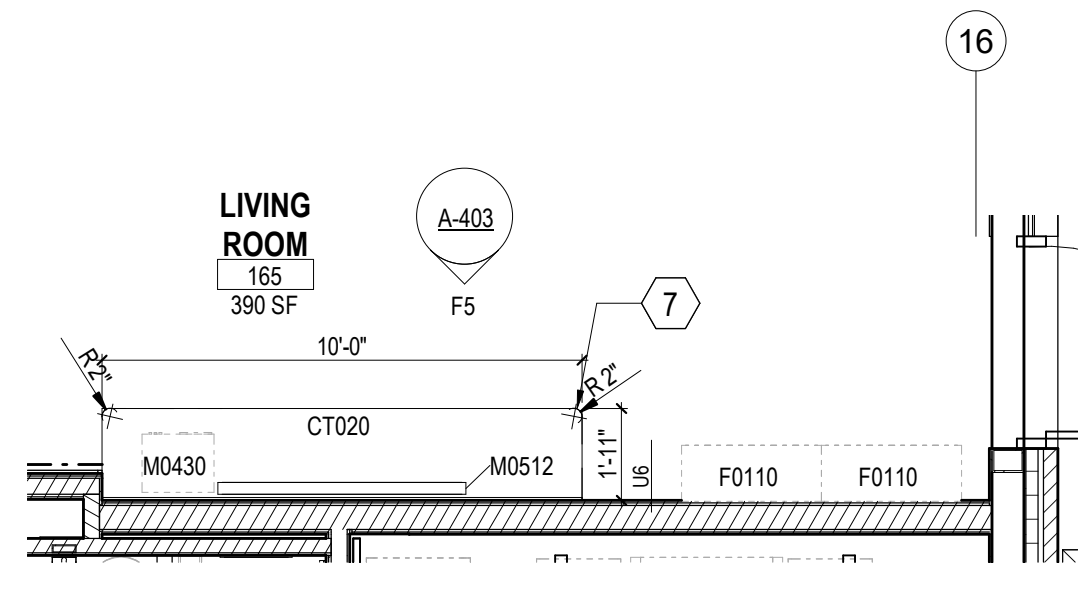
F2 SALON - WEST ELEVATION
1/4" = 1'-0" (NOTE: SEE A-401 FOR JSN SCHEDULE)



F3 SALON
1/4" = 1'-0" (NOTE: SEE A-401 FOR JSN SCHEDULE)



F5 LIVING ROOM - SOUTH ELEVATION
1/4" = 1'-0" (NOTE: SEE A-401 FOR JSN SCHEDULE)



F7 LIVING ROOM
1/4" = 1'-0" (NOTE: SEE A-403 FOR JSN SCHEDULE)

CONSULTANT

Landscape Architect 416 North Toole Avenue Tucson, AZ 85710 (520) 622-6665 Josh Orth, PLA	Protective Design Specialist 240 West 35th St. Suite 1004 New York, NY 10001 (212) 967-4890 Corrine Tan, SE	Structural 515 West James Street, Suite 102 Lancaster, PA 17603 (717) 481-2991 Jason Vannoy, SE, PE	MEP 550 North Rex Street, Suite 203 Tampa, FL 33605 (813) 289-4700 Nicholas Stephenson, PE

ARCHITECT/ENGINEER OF RECORD

A/E:
TRIPLE C - The A/E Group
201 E. Jefferson Street, Suite 200
Syracuse, NY 13202
(315) 484-9968
Mat Perkins

STAMP



Office of
Construction
and Facilities
Management

VA U.S. Department
of Veterans Affairs

Drawing Title
ARCHITECTURAL ENLARGED VIEWS

Approved:

Phaso
ISSUED FOR
CONSTRUCTION

FULLY SPRINKLERED

Project Title
NEW COMMUNITY LIVING
CENTER

Location
2094 Albany Post Road, Montrose, NY 10548

Issue Date
05/09/2022

Checked
H.GARDNER

Drawn
K. MCDERMOTT

Project Number
620-334

Building Number
CLC

Drawing Number
A-403