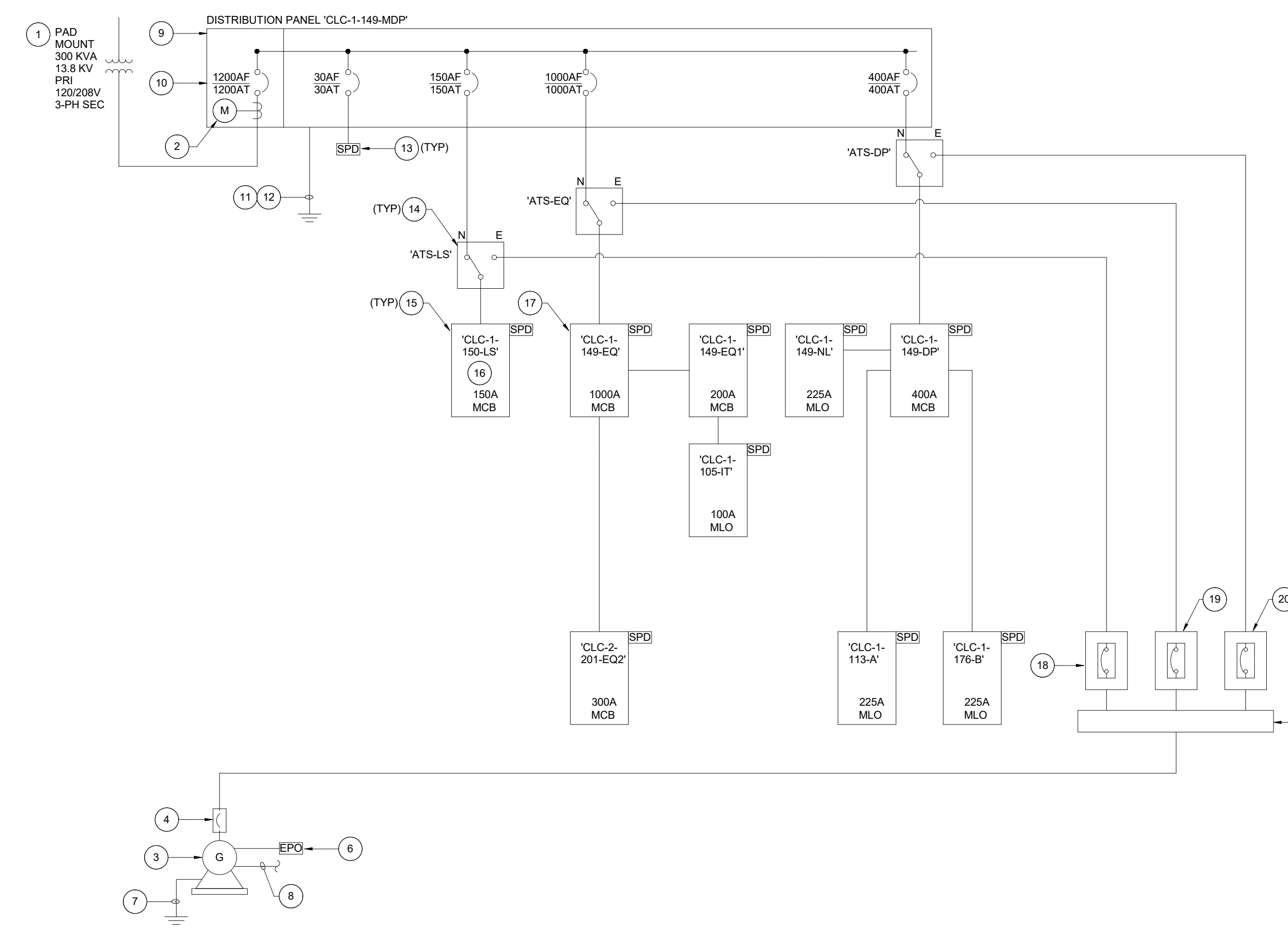


TRANSFORMER SCHEDULE						
Name	Size KVA	Rating	Primary Voltage	Secondary Voltage	Fault KVAIC at Secondary	G.E.C.
T1	300	Standard	Utility	208V/3 Phase	69.39	None

208V FEEDER SCHEDULE															
Feeder Termination	Feeder Source	Breaker Size Amps	Poles	Neutral (Y/N)	Feeder Material	Number of Runs	Wires per Run	Neutral Conductors per Run	Wire Size		Conduit		Voltage Drop	Fault Current kAIC	
									Size	Type	Size	Type			
1-149-MDP	T1	1200	3	Y	Cu	4	3	350 KCML	350 KCML	None	None	3"	PVC	0.000%	43.97
ATS-L5	1-149-MDP	150	3	Y	Cu	1	3	10 AWG	10 AWG	#6 AWG	E.G.	2"	RGS	0.001%	42.24
ATS-EQ	1-149-MDP	1000	3	Y	Cu	3	3	400 KCML	400 KCML	20 AWG	E.G.	3"	RGS	0.007%	43.71
ATS-DP	1-149-MDP	400	3	Y	Cu	2	3	30 AWG	30 AWG	#3 AWG	E.G.	2"	RGS	0.006%	43.35
WIREWAY	GEN SET	1200	3	Y	Cu	4	3	350 KCML	350 KCML	None	None	3"	PVC	0.000%	18.05
150A EN. CKT BR	WIREWAY	150	3	Y	Cu	1	3	10 AWG	10 AWG	#6 AWG	E.G.	2"	RGS	0.001%	17.75
1000A EN. CKT BR	WIREWAY	1000	3	Y	Cu	3	3	400 KCML	400 KCML	20 AWG	E.G.	3"	RGS	0.007%	19.01
400A EN. CKT BR	WIREWAY	400	3	Y	Cu	2	3	30 AWG	30 AWG	#3 AWG	E.G.	2"	RGS	0.006%	17.95
ATS-L5	150A EN. CKT BR	150	3	Y	Cu	1	3	10 AWG	10 AWG	#6 AWG	E.G.	2"	RGS	0.019%	14.22
ATS-EQ	1000A EN. CKT BR	1000	3	Y	Cu	3	3	400 KCML	400 KCML	20 AWG	E.G.	3"	RGS	0.112%	17.37
ATS-DP	400A EN. CKT BR	400	3	Y	Cu	2	3	30 AWG	30 AWG	#3 AWG	E.G.	2"	RGS	0.099%	16.50
1-150-L5	ATS-L5	150	3	Y	Cu	1	3	10 AWG	10 AWG	#6 AWG	E.G.	2"	RGS	0.020%	25.29
1-149-EQ	ATS-EQ	1000	3	Y	Cu	3	3	400 KCML	400 KCML	20 AWG	E.G.	3"	RGS	0.014%	43.45
1-149-EQ1	1-149-EQ	200	3	Y	Cu	1	3	30 AWG	30 AWG	#6 AWG	E.G.	2"	RGS	0.028%	41.14
1-105-T1	1-149-EQ1	100	3	Y	Cu	1	3	#3 AWG	#3 AWG	#8 AWG	E.G.	1 1/4"	RGS	0.043%	21.28
2-201-EQ2	1-149-EQ	300	3	Y	Cu	1	3	350 KCML	350 KCML	#8 AWG	E.G.	3"	RGS	0.417%	18.00
1-149-DP	ATS-DP	400	3	Y	Cu	2	3	30 AWG	30 AWG	#3 AWG	E.G.	2"	RGS	0.012%	42.75
1-149-NL	1-149-DP	100	3	Y	Cu	1	3	#3 AWG	#3 AWG	#8 AWG	E.G.	1 1/4"	RGS	0.117%	22.56
1-112-A	1-149-DP	150	3	Y	Cu	1	3	10 AWG	10 AWG	#6 AWG	E.G.	2"	RGS	1.51%	6.91
1-175-B	1-149-DP	150	3	Y	Cu	1	3	10 AWG	10 AWG	#6 AWG	E.G.	2"	RGS	0.487%	12.17

- NOTES:
- FEEDER AMPACITIES BASED ON NEC TABLE 310.16 FOR 75°C.
  - EQUIPMENT GROUNDING (E.G.) SIZED PER NEC TABLE 250.122.
  - PANEL DESIGNATIONS ONLY SHOW FLOOR #, ROOM # AND PANEL TYPE/NAME. BUILDING # HAVE YET TO BE ESTABLISHED. TEMPORARILY USING CLC AS BUILDING #.
  - ALL CONDUITS SIZED PER NEC TABLE C.1 FOR THHN, THWN-2.



1 SINGLE LINE - 208/120V-3PH-4W

- SINGLE-LINE GENERAL NOTES**
- REFER TO COR FOR ELECTRICAL SERVICE REQUIREMENT FOR COORDINATION WITH INSTALLATION OF TRANSFORMER AND METERING EQUIPMENT.
  - REFER TO FEEDER AND PANEL SCHEDULES FOR ADDITIONAL INFORMATION.
  - BUILDING NUMBER HAS YET TO BE ESTABLISHED. IN LIEU OF BUILDING NUMBER, "CLC" IN FRONT OF PANEL IS USED TEMPORARILY.
  - EMERGENCY STAND-BY GENERATOR SHALL BE INSTALLED, TESTED AND MAINTAINED IN ACCORDANCE WITH NFPA 110, STANDARD FOR EMERGENCY AND STANDBY POWER SYSTEMS.
  - AVAILABLE FAULT CURRENT LABELING: IN LIEU OF THE MAXIMUM AVAILABLE FAULT CURRENT MARKING AS REQUIRED BY THE NEC, A PERMANENTLY AFFIXED LABEL SHALL BE PROVIDED WITH THE AVAILABLE FAULT CURRENT AT THE TIME OF INSTALLATION AND CALCULATION. THE LABEL SHALL BE 2" x 3" IN SIZE AND SHALL BE BLUE LETTERING ON THE CONTRASTING BACKGROUND. THE LABEL SHALL ALSO INCLUDE THE DATE OF THE SHORT CIRCUIT FAULT CURRENT CALCULATION.
  - CONTRACTOR SHALL VERIFY AIC RATING WITH THE VA.
  - EQUIPMENT MANUFACTURER SHALL PERFORM COORDINATION STUDY FOR ALL CIRCUIT BREAKERS. PROVIDE ADJUSTMENT TRIP CIRCUIT BREAKERS AS REQUIRED WITH THE APPROPRIATE SETTINGS REQUIRED TO ACHIEVE COORDINATION.

- SINGLE-LINE KEYNOTES**
- PAD-MOUNT UTILITY TRANSFORMER BY THE VA. COORDINATE CONCRETE PAD AND EQUIPMENT PROTECTION REQUIREMENTS WITH THE VA. COORDINATE FINAL LOCATION AND ALL OTHER REQUIREMENTS WITH THE VA.
  - INTEGRAL BUILDING LEVEL ADVANCED UTILITY METER. ELECTRIC METER SHALL BE COMPATIBLE WITH THE VA ADVANCED UTILITY METERING SYSTEM (AUMS). ELECTRICAL CONTRACTOR SHALL COORDINATE AND SUBMIT METER TO THE AEA FOR REVIEW AND APPROVAL, PRIOR TO PROCUREMENT.
  - EMERGENCY STAND-BY GENERATOR. SEE GENERATOR SYSTEM REQUIREMENT DETAILS FOR ADDITIONAL INFORMATION. PROGRAM GENERATOR CONTROLLER TO LOAD SHED BASED ON NEEDS OF THE LIFE SAFETY AND EQUIPMENT BRANCH PANELS.
  - PROVIDE 208V, 1200A/3P CIRCUIT BREAKER.
  - WIREWAY FOR FEEDER TAPS.
  - EPO - EMERGENCY POWER OFF, MUSHROOM STYLE, RED IN COLOR. EPO SHALL BE MOUNTED ON PEDESTAL 2 FT. AWAY FROM GENERATOR. PROVIDE IDENTIFICATION PLAQUE, RED WITH 1/2" WHITE LETTERS AND SHALL BE LABELED AS "EMERGENCY GENERATOR DISCONNECT." BUTTON SHALL BE TIED TO GENERATOR CONTROL PANEL.
  - SEE GENERATOR GROUNDING DETAILS 'G' ON SHEET E501.
  - (1) 1" CONDUITS FROM GENERATOR CONTROL PANEL TO IT ROOM, (1) FOR COMMUNICATION.
  - 1200A, 208/120V-3PH, 4W DISTRIBUTION PANELBOARD.
  - INTEGRATED 1200A MAIN CIRCUIT BREAKER.
  - SEE GROUNDING DETAILS 'X' ON SHEET E501.
  - PROVIDE #30 AWG CU GROUNDING ELECTRODE CONDUCTOR.
  - SPD - SURGE PROTECTION DEVICE.
  - ATS, AUTOMATIC TRANSFER SWITCH.
  - 208/120V-3PH, 4W BRANCH PANELBOARD.
  - LIFE SAFETY BRANCH PANELBOARD.
  - 1200A, 208/120V-3PH, 4W DISTRIBUTION PANELBOARD.
  - 208V, 1500A/3P ENCLOSED CIRCUIT BREAKER.
  - 208V, 1000A/3P ENCLOSED CIRCUIT BREAKER.
  - 208V, 400A/3P ENCLOSED CIRCUIT BREAKER.

BIM 360://620-334 New Community Living Center/15571\_MEP\_VA Montrose CLC\_PD014 6/2/2022 9:05:23 AM

Revisions:	Date:

**CONSULTANT**

**NORRIS DESIGN**  
Landscape Architect  
416 North Toole Avenue  
Tucson, AZ 85701  
(520) 622-9565  
Josh Orth, PLA

**HINMAN**  
Protective Design Specialist  
240 West 35th St. Suite 1004  
New York, NY 10001  
(212) 967-4890  
Corrie Tan, SE

**C.S. Davidson, Inc.**  
Structural  
315 West James Street, Suite 102  
Lancaster, PA 17603  
(717) 481-2991  
Jason Vannoy, SE, PE

**MES GROUP**  
MEP  
550 North Ross Street, Suite 203  
Tampa, FL 33609  
(813) 289-4700  
Nicholas Stephenson, PE

**ARCHITECT/ENGINEER OF RECORD**

**TRIPLE C - The A/E Group**  
201 E. Jefferson Street, Suite 200  
Syracuse, NY 13202  
(315) 484-9958  
Mat Perkins

**TRIPLE C - THE A&E GROUP**  
A MULTI-DISCIPLINE COMPANY

**STAMP**

STATE OF NEW YORK  
NICHOLAS S. STEPHENSON  
LICENSED PROFESSIONAL ENGINEER  
05/09/2022

**Office of Construction and Facilities Management**

**VA** U.S. Department of Veterans Affairs

Drawing Title  
**SINGLE LINE DIAGRAM - ELECTRICAL**

Approved:

Phase  
**ISSUED FOR CONSTRUCTION**

**FULLY SPRINKLERED**

Project Title  
**NEW COMMUNITY LIVING CENTER**

Location  
2094 Albany Post Road, Montrose, NY 10548

Issue Date  
05/09/2022

Checked  
DK

Drawn  
SC

Project Number  
620-334

Building Number  
CLC

Drawing Number  
E-601