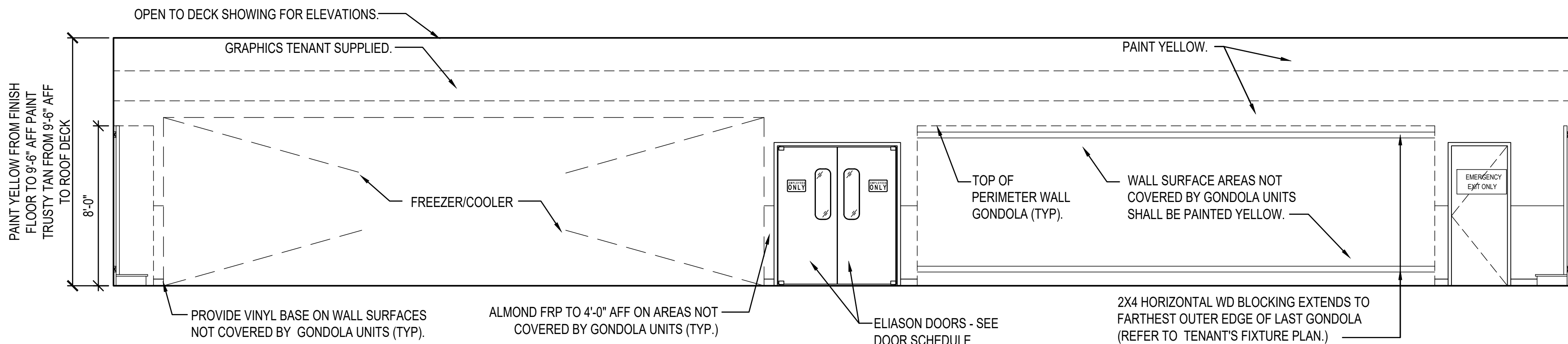
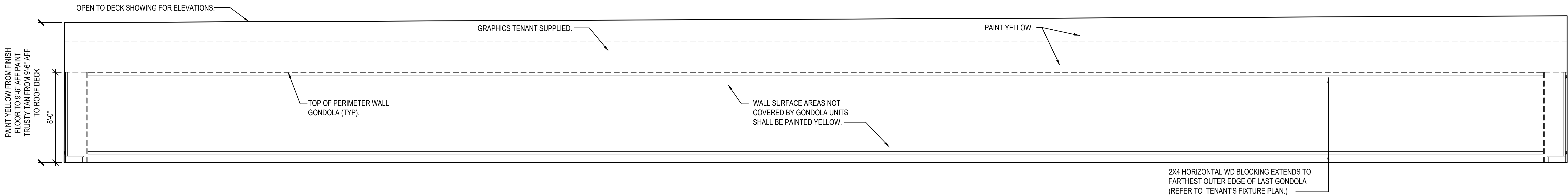


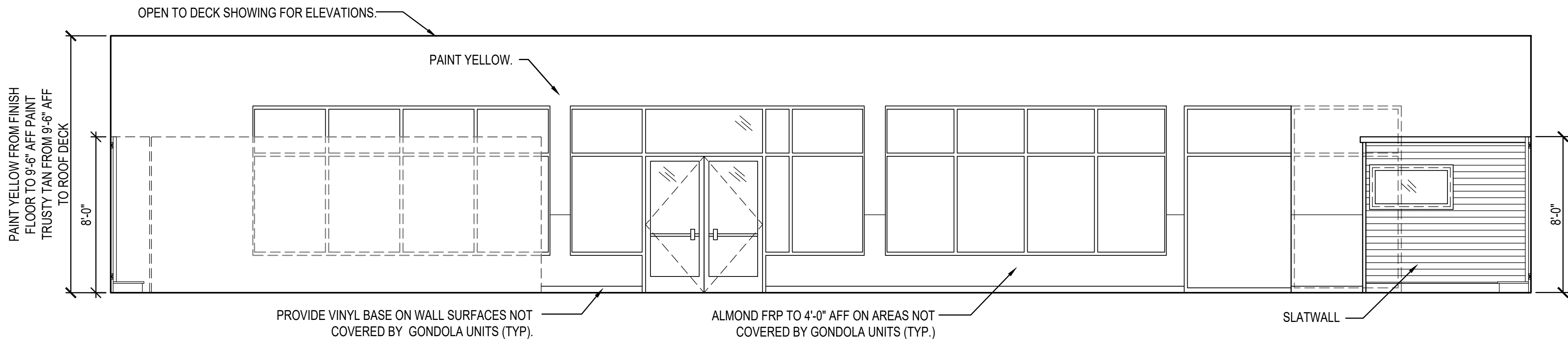
A
A3.2
SCALE: 1/4" = 1'-0"



B
A3.2
SCALE: 1/4" = 1'-0"



C
A3.2
SCALE: 1/4" = 1'-0"



D
A3.2
SCALE: 1/4" = 1'-0"

ALL PLANS, SPECIFICATIONS AND RECORDS TO WHICH THE SEAL OF AN ARCHITECT HAS BEEN APPLIED, THERE SHALL ALSO BE APPLIED A STAMP WITH APPROPRIATE WORKING WARNING THAT IT IS A VIOLATION OF THE LAW FOR ANY PERSON UNLESS ACTING UNDER THE DIRECTION OF AN ARCHITECT TO REPRODUCE, COPY, REPRODUCE, OR OTHERWISE USE ANY PART OF THE SAME FOR ANY PURPOSE OTHER THAN THAT FOR WHICH IT WAS PREPARED. THE SEAL OF AN ARCHITECT SHALL BE ALTERED BY FOLLOWED BY HIS SIGNATURE AND THE DATE OF SUCH ALTERATION AND A SPECIFIC DESCRIPTION OF THE ALTERATION.

date	project	designed	drawn	checked
08/15/2022	202227/D/3216	RLO	PGS	JWO
mark	revisions	by	date	description

Dean Associates
Architects Incorporated
Architecture & Interior Design
7 Kimball Lane Suite 16
Lyndeborough MA 01940
p: 781.397.8092 f: 781.397.8094
www.deanassoc.com

DOLLAR TREE
166 S. LIBERTY DRIVE - DEAL #13216 / STORE #2573
STONY POINT, NY 10980
INTERIOR ELEVATIONS

project
drawing
sheet

A3.2