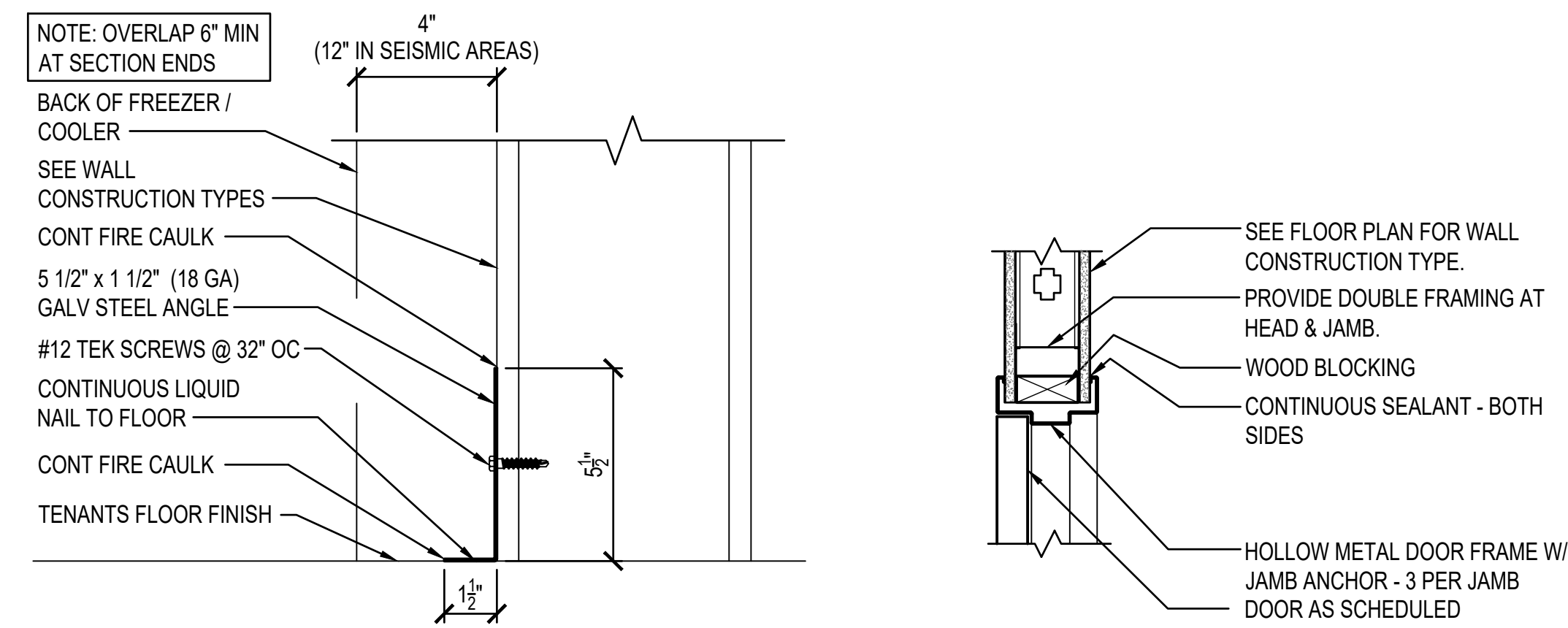


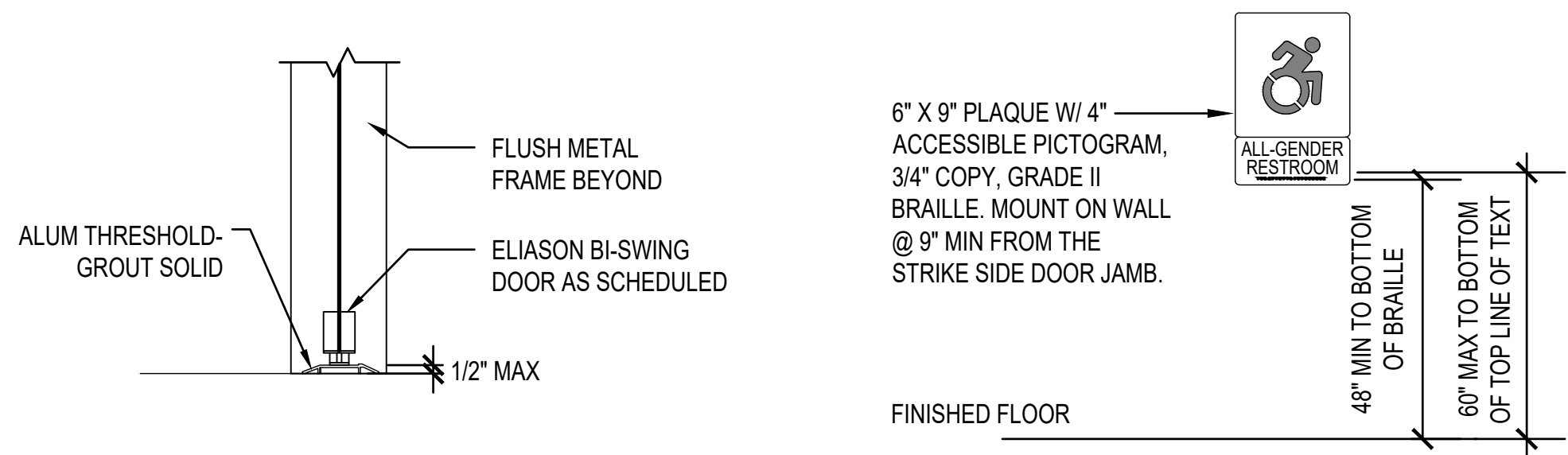
1 HEAD / JAMB DETAIL  
SCALE: 1 1/2" = 1'-0"

2 SILL DETAIL  
SCALE: 1 1/2" = 1'-0"



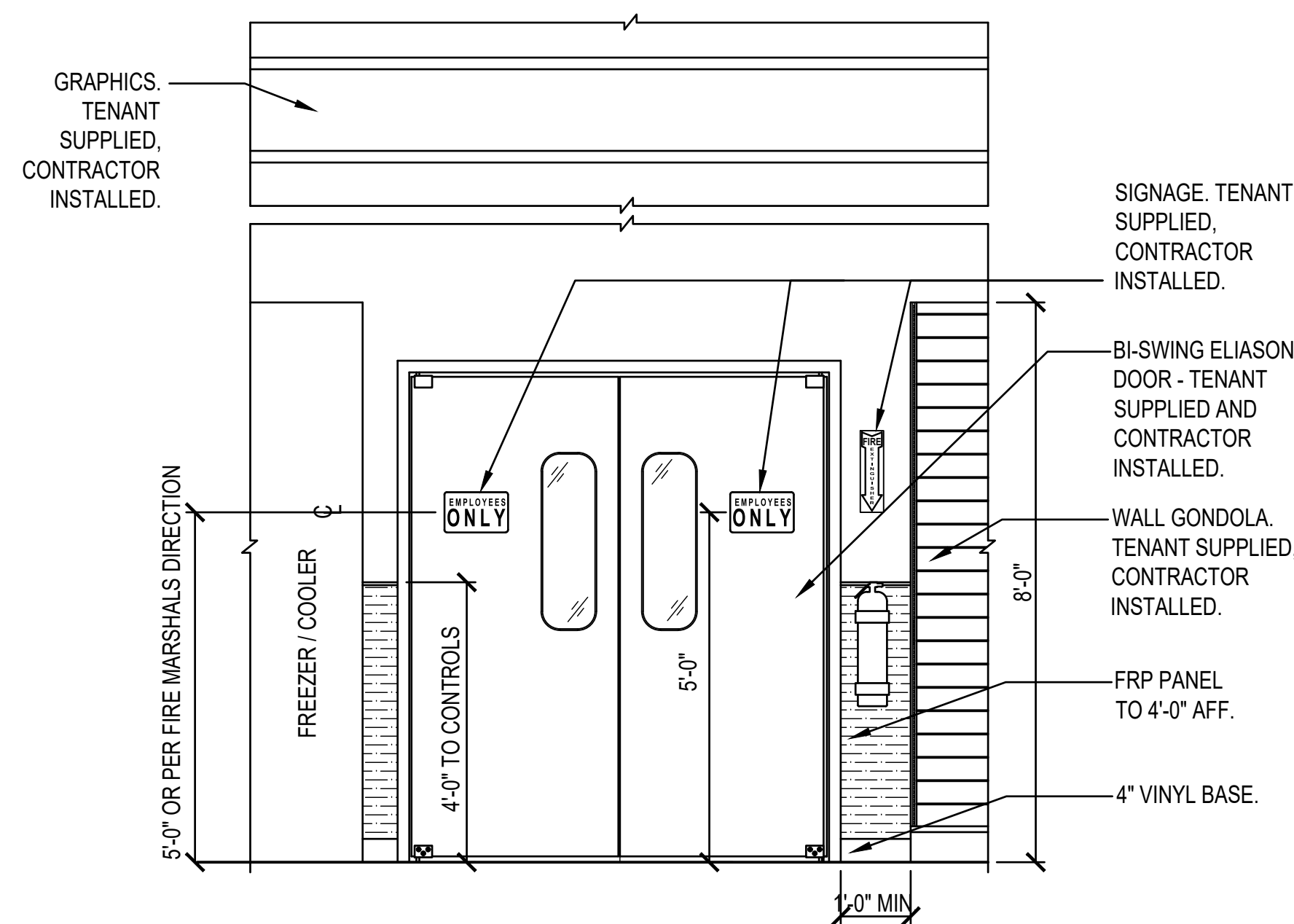
3 DETAIL  
SCALE: 3" = 1'-0"

4 HEAD / JAMB DETAIL  
SCALE: 1 1/2" = 1'-0"

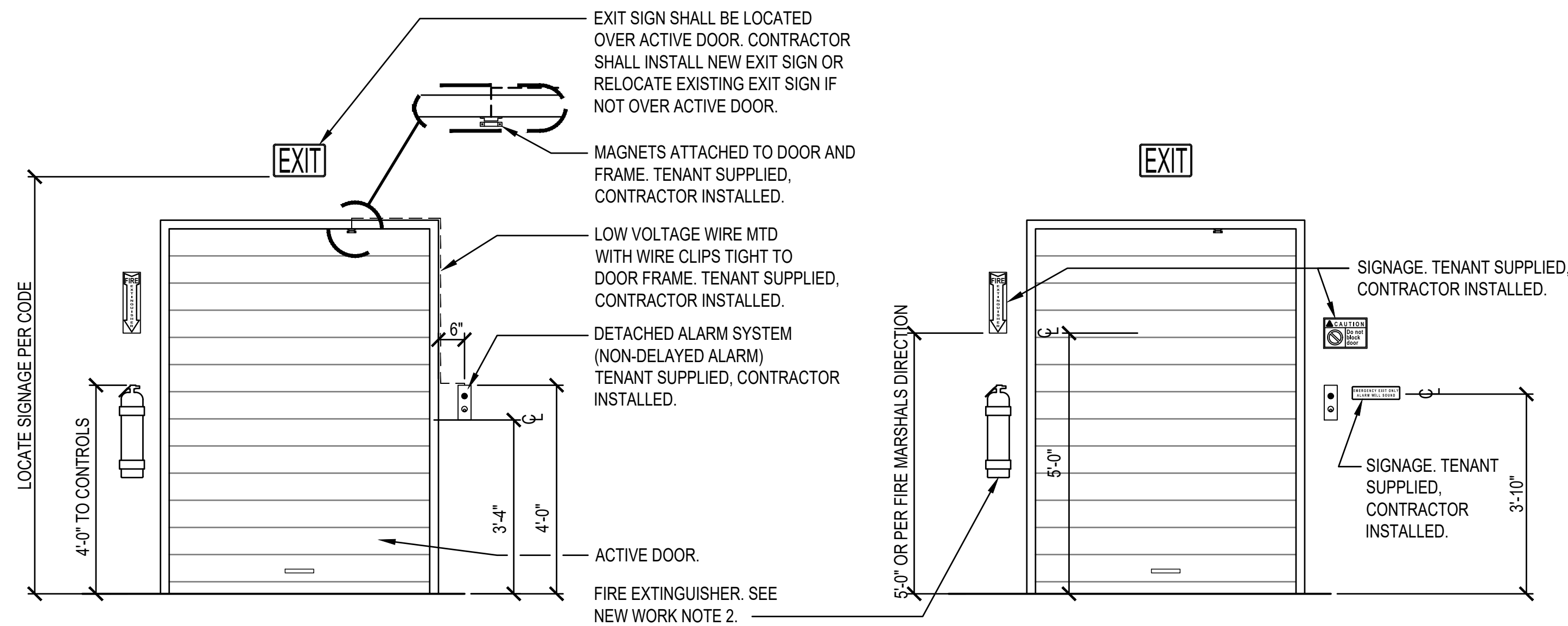


5 SILL DETAIL  
SCALE: 1 1/2" = 1'-0"

A SIGNAGE ELEVATION  
SCALE: NTS



B SALES / PRE-SALES DOOR ELEVATION  
SCALE: 1/2" = 1'-0"



C ROLL-UP DOOR ELEVATION  
SCALE: 1/2" = 1'-0"

FINISH SCHEDULE					
SPACES	FLOORS	BASES	WALLS	CEILING	NOTES
SALES	ENTRY CARPET TILE / POLISHED CONC	4" VINYL	GWB-PAINT YELLOW / PAINT YELLOW / FRP	---	1,2,5,6,9,11,12,14
PRE-SALES	CONCRETE	-	EXISTING	---	2,8,11,15
EMPLOYEE AREA	CONCRETE	-	GWB / PLYWOOD	---	2, 6,13
OFFICE	POLISHED CONC	4" VINYL	GWB-PAINT WHITE	---	2,5,6,9,10,12
TOILET	SHEET VINYL	6" SHEET VINYL	FRP	GWB	3,6,7,11
HALLWAY	POLISHED CONC	4" VINYL	GWB-PAINT WHITE / FRP	ACT	2,4,6,11,12

- FINISH NOTES
- CARPET TILE: MANUFACTURED BY INTERFACE FLOORING SYSTEMS AND TENANT SUPPLIED. INSTALL TILES QUARTER TURNED AND PER TENANT'S CRITERIA.  
ENTRY TILE: DECO RIB, STYLE #678009900.  
CONTRACTOR SHALL PREPARE FLOOR SURFACE AND COORDINATE CARPET INSTALLATION W/ CARPET INSTALLER.
  - VINYL COVE BASE: COLOR - BLACK. VINYL BASE ONLY ON EXPOSED WALLS NOT COVERED BY GONDOLAS IN SALES AREA.)  
VINYL COVE BASE TO BE LOCATED IN PRE-SALES AT MOP SINK AND CABINET ONLY UON.
  - SHEET VINYL: CLASSIC CORLON SERIES  
MANUFACTURED BY ARMSTRONG - CONNECTION CORLON "PORCELAIN" #88724 OR EQUAL.  
SHEET VINYL BASE: BY INTREGAL, 3/8" RADIUS, 6" HIGH COVED BASE W/ COVE STICK AND EXTRUDED ALUMINUM CAP TRIM.
  - PROVIDE 2'-0" X 4'-0" CEILING TILE EQUAL TO ARMSTRONG "CORTEGA" MINABOARD #769, WHITE, IN A WHITE METAL GRID. (IN AREAS WITH SIGNIFICANT AIR PRESSURE DIFFERENTIALS PROVIDE RETENTION CLIPS TO RETAIN PANELS IN PLACE.)
  - SLATWALL: 3/4" SLATWALL WITH WHITE MELAMINE FINISH. SEE MANUFACTURER'S DRAWINGS FOR INSTALLATION DETAILS.
  - PAINT COLORS ARE AS FOLLOWS:  
  
WHITE - SHERWIN WILLIAMS PRO 200 LATEX SEMI-GLOSS WHITE W/ 8-1 PER GALLON.  
YELLOW - BENJAMIN MOORE PRODUCT 274 "LEMON SORBET" #2019-60 (EGGSHELL FINISH)  
FOREST GREEN - BENJAMIN MOORE PRODUCT 274 "FOREST GREEN" #2047-10 (EGGSHELL FINISH)  
  
TRUSTY TAN - "TRUSTY TAN" #SW6087 LRV 37% SHERWIN WILLIAMS (SATIN FINISH)
  - PAINT TOILET ROOM EXTERIOR WALLS WHITE.
  - EXIST CONCRETE FLOOR TO REMAIN. PATCH AND REPAIR AS REQUIRED TO PROVIDE SMOOTH SURFACE.
  - SLATWALL TENANT SUPPLIED SHALL BE INSTALLED BY THE CONTRACTOR. ALL OTHER FINISHES SHALL BE PROVIDED AND INSTALLED BY CONTRACTOR.
  - PROVIDE PREFORMED COUNTER WITH WHITE HIGH PRESSURE LAMINATE FINISH. MOUNT TO WALLS. FILING CABINETS PROVIDED BY TENANT. SEE ENLARGED OFFICE PLAN AND OFFICE ELEVATION.
  - F R P (FIBERGLASS REINFORCED PANEL): IN TOILET ROOM FROM FLOOR TO 8'-3" AFF VIF SHALL BE WHITE" COLOR (IN PRE-SALES BEHIND MOP SINK ONLY, IN HALLWAY BEHIND DRINKING FOUNTAIN ONLY.) FRP ON SALES FLOOR (WHERE NOTED ON PLANS/ELEVATIONS) SHALL BE ALMOND COLOR WITH "J" CHANNEL TRIM CAP AND "H" CHANNEL PANEL CONNECTORS.
  - POLISHED CONCRETE FLOOR ON SALES FLOOR AND OFFICE. COORDINATE WITH TENANT.
  - PAINT EMPLOYEE AREA WALLS TO 4'-0" AFF "FOREST GREEN".
  - SALES AREA TO RECEIVE LEVEL 5 FINISH. PROVIDE FINISH TO 1'-0" BEHIND FREEZER / COOLER AND GONDOLA. TO FF EVERYWHERE ELSE. CONTRACTOR SHALL ALLOW 72 HOUR CURE TIME.
  - PAINT 6" WIDE BAND ON CONCRETE FLOOR AROUND PERIMETER OF PRE-SALES WITH 2 COATS BENJAMIN MOORE "FD BM WHITE" TOUGH SHIELD ACRYLIC GLOSS TY-43. PAINT BAND PRIOR TO PAINTING ANY YELLOW CLEAR FLOOR SPACE AREAS.
- A. EXPOSED CMU WALLS IN THE SALES AREA SHALL HAVE ONE COAT OF PRIMER AND A MINIMUM OF ONE COAT OF YELLOW PAINT.
- B. EXPOSED ROOF DECK, ROOF STRUCTURE, DUCTWORK, PIPING, ETC. SHALL BE PAINTED TRUSTY TAN. REFER TO INTERIOR ELEVATIONS FOR ADDITIONAL INFORMATION. CONTRACTOR SHALL CONFIRM WITH LOCAL FIRE DEPARTMENT IF FIRE LINES ARE TO BE PAINTED RED. THIS ONLY APPLIES IN SPACES THAT ARE SPRINKLERED.

## GENERAL FINISH NOTES

- PROVIDE ALUMINUM TRANSITION STRIP OR THRESHOLD AT ALL CHANGES IN FLOORING MATERIALS.

DOOR SCHEDULE										
DOORS					DETAILS			FR	HDW NOTES	DOOR NOTES
#	W	H	T	MATERIAL	HEAD	JAMB	SILL			
100	3'-0"	6'-8"	1 3/4"	SOLID CORE WD	4/A4	4/A4	-		100A	5
200	PR 3'-0"	7'-0"	.063"	TEMP. ALUM ALLOY	1/A4	1/A4	2/A4		200A	2,7,11
300	3'-0"	6'-8"	1 3/4"	EXIST SOLID CORE WD	-	-	-		300C	3,5,6
301	3'-0"	6'-8"	1 3/4"	SOLID CORE WD	4/A4	4/A4	-		300D	5,10
400	-	-	-	EX. ROLL-UP O.H.	-	-	-		400A	13
401	3'-0"	7'-0"	1 3/4"	EXISTING HOLLOW METAL	-	-	-		400C	1,3,4,5,8,10
500	PR 3'-0"	7'-0"	1 3/4"	STOREFRONT	-	-	2/A4		500A	1,8

- DOOR NOTES
- PROVIDE A SIGN POSTED ON THE EGRESS SIDE, ON OR ADJACENT TO THE DOOR STATING: "THIS DOOR TO REMAIN UNLOCKED WHEN BUILDING IS OCCUPIED." THE SIGN SHALL BE IN LETTERS 1" HIGH ON A CONTRASTING BACKGROUND.
  - NEW DOORS - SUPPLIED BY TENANT W/ PRE-INSTALLED BRUSHED ALUM COVER PLATE ON SALES AREA SIDE OF THE DOOR. EXIST DOORS - INSTALL ALUM COVER PLATE (SUPPLIED BY TENANT) ON EXIST DOORS TO REMAIN.
  - DOOR, FRAME AND HINGES ARE EXISTING. PROVIDE AND INSTALL ANY MISSING ITEMS OF HARDWARE PER HARDWARE NOTES
  - PROVIDE (ONE) PEEP HOLE TO VIEW OUT. MOUNT @ 4'-3" AFF.
  - PAINT DOOR AND FRAME W/ WHITE SEMI-GLOSS ENAMEL PAINT.
  - INSTALL TENANT SUPPLIED SIGNAGE PER DETAIL A/A4.
  - REINFORCE JAMBS WITH WOOD BLOCKING.
  - CONTRACTOR TO PROVIDE AND INSTALL DOOR SWEEP ON ALL EXTERIOR DOORS TO PREVENT WATER, WIND AND DEBRIS INFILTRATION.
  - PROVIDE STOREFRONT DOORS, TRANSOM AND THRESHOLD TO MATCH EXIST. PROVIDE SHOP DRAWINGS TO LANDLORD FOR APPROVAL PRIOR TO INSTALLATION.
  - PROVIDE SIGNAGE THAT READS "EMERGENCY EXIT ONLY."
  - PROVIDE SIGNAGE THAT READS "EMPLOYEES ONLY."
  - REMOVE PULL HANDLES AND HARDWARE ON EXTERIOR SIDE OF DOOR. PROVIDE COVER PLATES TO MATCH FOR ALL HOLES IN DOOR AND FRAME.
  - EXISTING OVERHEAD DOOR - PROVIDE HASP FOR TENANT'S LOCK.
- HARDWARE NOTES
- HDW # 100A
- 1 1/2 PAIR HINGES: STANDARD WEIGHT
  - 1 MECHANICAL PUSH BUTTON LOCKSET WITH LEVER HANDLE
  - 1 CLOSER
  - 1 FLOOR STOP
- HDW # 200A
- LWP-3 ALUMINUM TRAFFIC DOOR EASY SWING HINGE SYSTEM
  - 9" X 30" CLEAR ACRYLIC WINDOW FLUSH HOLLOW METAL FRAME - DRYWALL
- HDW # 300C
- EXIST 1 1/2 PAIR HINGES: STANDARD WEIGHT
  - EXIST 1 PRIVACY SET WITH LEVER HANDLE
  - EXIST 1 CLOSER
  - EXIST FLOOR/WALL STOP
- HDW # 300D
- 1 1/2 PAIR HINGES: STANDARD WEIGHT
  - 1 PASSAGE SET W/ LEVER HANDLE
  - 1 CLOSER
  - (FLOOR/WALL STOP IF SHIPPED WITH HARDWARE)
  - INSTALL STAND ALONE ALARM - REFER TO DOOR ALARM MOUNTING DETAIL.
- HDW # 400A
- EXIST ROLL-UP DOOR RAILS AND HARDWARE
  - EXIST LATCH
  - INSTALL HASP FOR LOCK
  - INSTALL STAND ALONE ALARM
- HDW # 400C
- 1 1/2 PAIR HINGES: STANDARD WEIGHT, NON-REMOVABLE PINS
  - 1 NON-ALARMED, NON-KEYED PANIC BAR DEVICE: WITH STAND ALONE ALARM
  - REFER TO DOOR ALARM MOUNTING DETAIL.
  - 1 CLOSER WITH STOP ARM
  - 1 PEEP HOLE
  - 1 ALUM THRESHOLD (1/2" MAX HEIGHT)
  - 1 SWEEP
  - 1 WEATHER STRIP
  - 1 RAIN DRIP
- HDW # 500A
- HINGES PER STOREFRONT MANUFACTURER (BY GENERAL CONTRACTOR)
  - 2 CLOSERS WITH STOP ARM AND DROP PLATE
  - 2 PUSH PLATES (BY GENERAL CONTRACTOR)
  - 2 PULL HANDLES (BY GENERAL CONTRACTOR)
  - 1 KABA CYLINDER (SUPPLIED BY TENANT)
  - 1 COMMERCIAL GRADE ADA COMPLIANT DEADLOCK W/ TURN ON SALES SIDE (BY GENERAL CONTRACTOR)
- NOTE: CONTRACTOR SHALL VERIFY CLOSER DOES NOT HAVE A HOLD-OPEN FEATURE. IF CLOSER DOES, THE CONTRACTOR SHALL REPLACE WITH NEW CLOSER.

- GENERAL HARDWARE NOTES:
- THRESHOLDS AT EGRESS DOORS SHALL BE NO MORE THAN 1/2" (MAX) HEIGHT AFF.
  - ALL DOOR HANDLES, PULLS, LATCHES, LOCKS AND OTHER OPERATING DEVICES SHALL BE INSTALLED 34" (MIN) TO 44" (MAX) AFF AND SHALL BE "SINGLE-HANDED" OPERABLE WITHOUT USE OF KEY OR SPECIAL KNOWLEDGE.
  - WHERE EGRESS DOORS ARE USED IN PAIRS, THE UNLATCHING OF THE LEAF SHALL NOT REQUIRE MORE THAN ONE (1) OPERATION AS MENTIONED IN GENERAL HARDWARE NOTE #2 ABOVE.
  - CONTROLS AND OPERATING MECHANISMS SHALL BE LEVER-TYPE (OR EQUAL) PROVIDING OPERATION WITH ONE HAND AND NOT REQUIRE TIGHT GRASPING, PINCHING, OR TWISTING OF THE WRIST.
  - THE FORCE REQUIRED TO ACTIVATE CONTROLS OF INTERIOR HINGED DOORS SHALL BE NO GREATER THAN 5 POUNDS (22.2 N).
  - DOORS EQUIPPED WITH CLOSERS SHALL BE ADJUSTED SO THAT THE SWEEP PERIOD FROM AN OPEN POSITION OF 70 DEGREES WILL TAKE AT LEAST 3 SECONDS TO MOVE TO A POINT 3" FROM THE LATCH, MEASURED FROM THE LEADING EDGE OF THE DOOR.

ALL PLANS, SPECIFICATIONS AND RECORDS TO WHICH THE SEAL OF AN ARCHITECT HAS BEEN APPLIED, THERE SHALL ALSO BE APPLIED A STAMP WITH APPROPRIATE WORKING WARNING THAT IT IS A VIOLATION OF THE LAW FOR ANY PERSON UNLESS ACTING UNDER THE DIRECTION OF AN ARCHITECT TO REPRODUCE, COPY, REPRODUCE, OR IN ANY MANNER TO REPRODUCE OR ALTER THE ORIGINAL DESIGN OR SPECIFICATIONS. THE USER SHALL BE RESPONSIBLE FOR THE ACCURACY OF THE INFORMATION AND THE DATE OF SUCH ALTERATION AND A SPECIFIC DESCRIPTION OF THE ALTERATION.

description  
by  
mark  
date  
revisions

08/15/2022  
2022/7/10/21/6  
project  
designed  
drawn  
checked

Dean Associates  
Architects Incorporated  
Architecture & Interior Design  
7 Kimball Lane Suite 105  
Lynnfield MA 01940  
p: 781.397.8092 f: 781.397.8094  
www.deanassoc.com

DOLLAR TREE  
166 S. LIBERTY DRIVE - DEAL #13216 / STORE #2573  
STONY POINT, NY 10980  
DETAILS, ELEVATIONS AND SCHEDULES

project  
drawing

sheet

A4