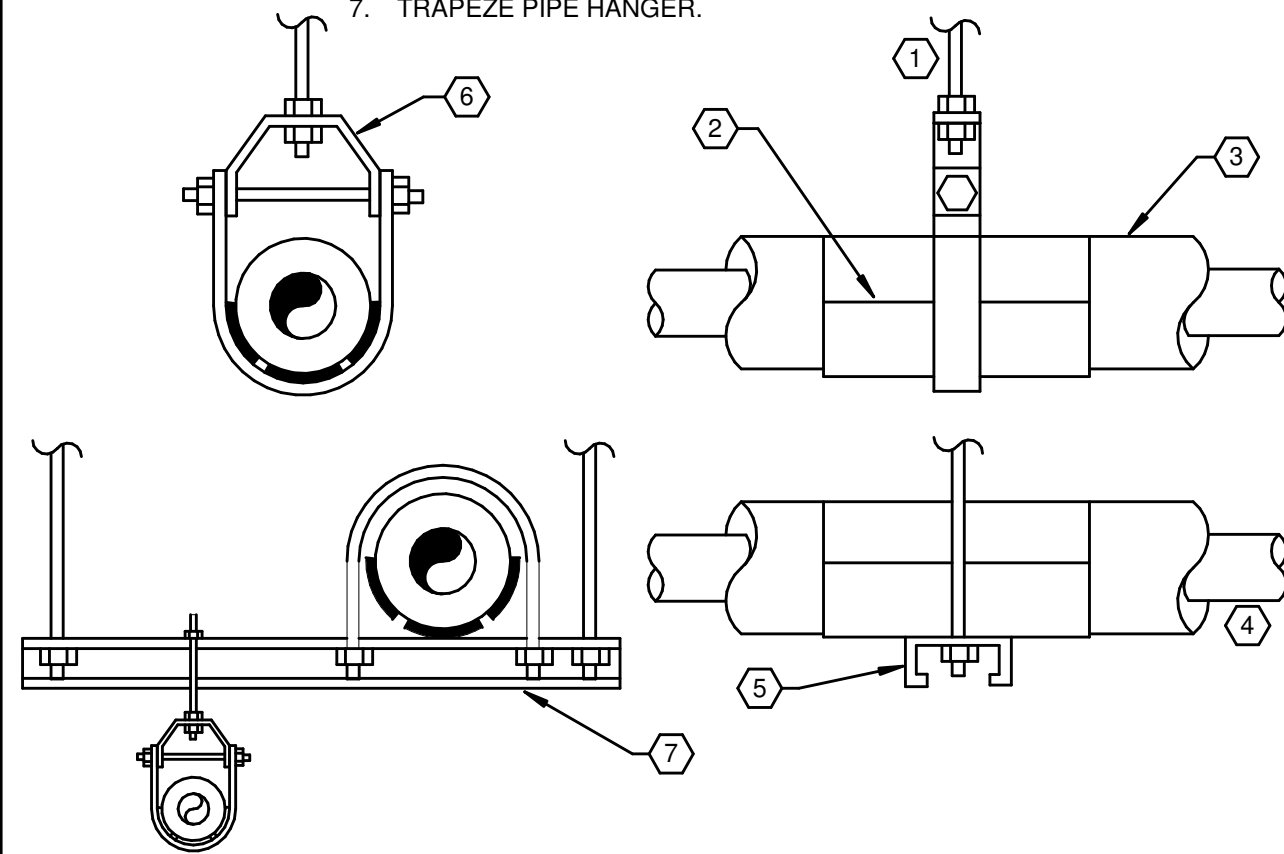


223001.00-01 - THERMOSTATIC MIXING VALVE TMV DETAIL

SCALE: NONE

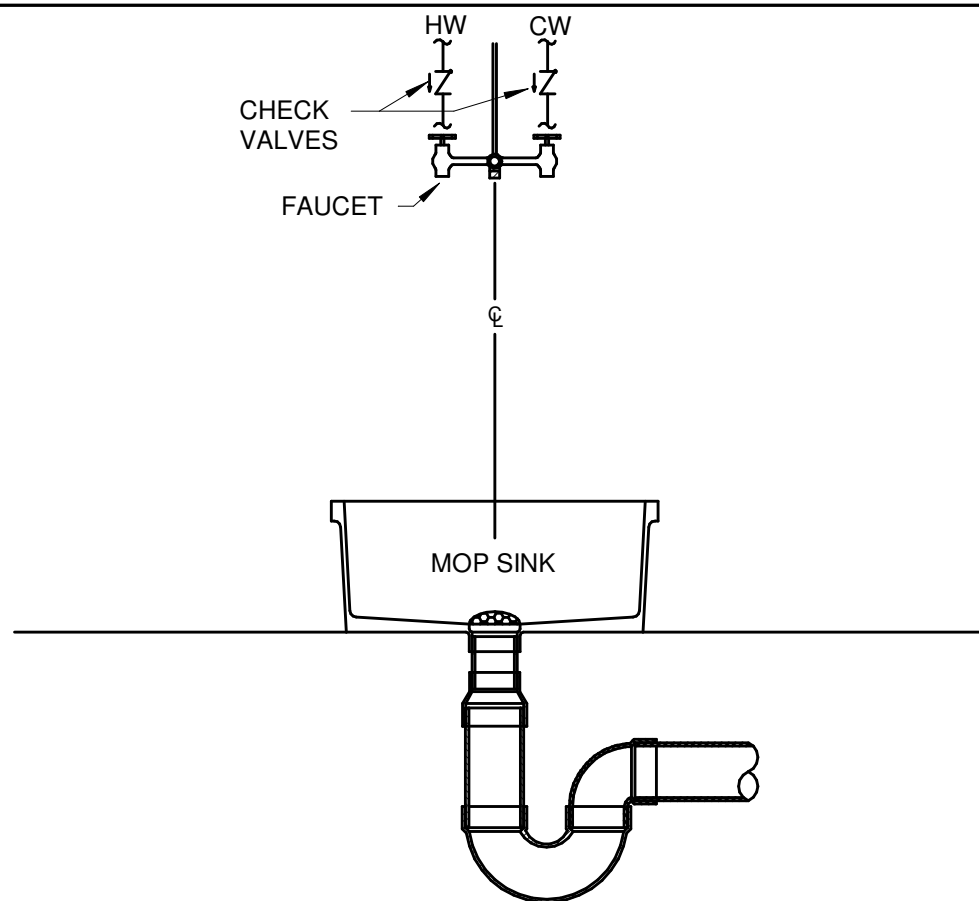
KEYED NOTES:

1. HANGER ROD.
2. GALVANIZED STEEL PIPE SHIELD AND 360° CALCIUM SILICATE INSULATION HANGER SUPPORT.
3. PIPE INSULATION.
4. PIPE.
5. UNISTRUT CHANNEL.
6. CLEVIS HANGER.
7. TRAPEZE PIPE HANGER.



220529.00-01 - PLUMBING PIPE HANGER INSTALLATION

SCALE: NONE

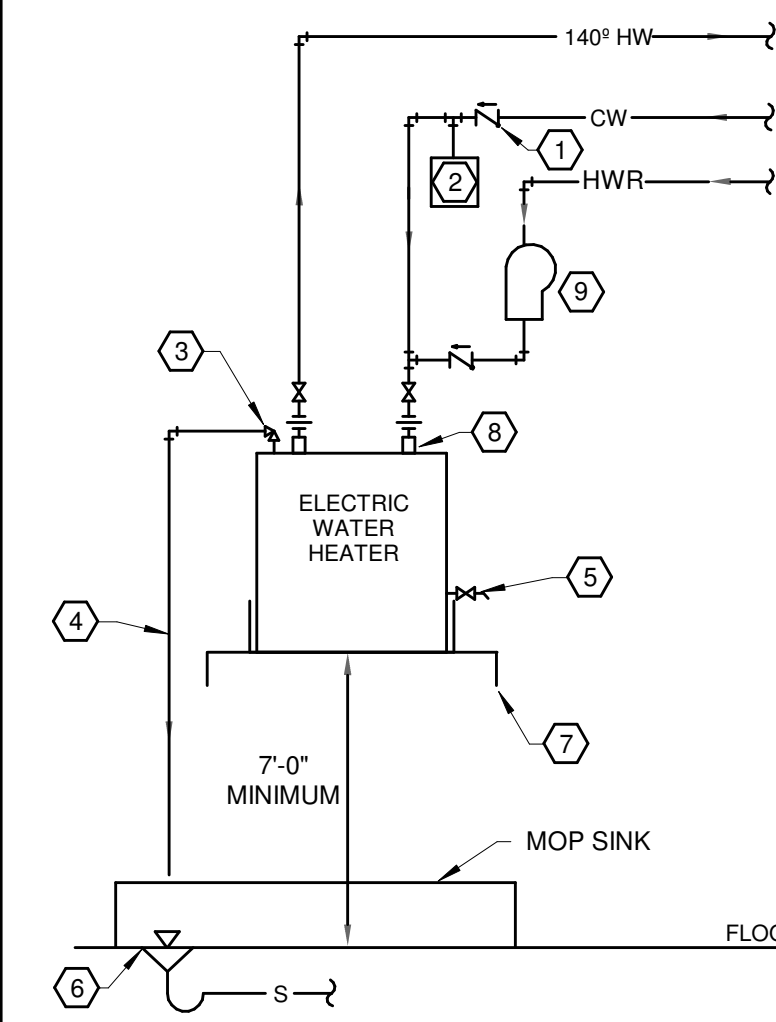


NOTES:

1. SEAL TOP OF SINK TO WALL USING A CONTINUOUS BEAD OF SILICONE CAULKING, WHEREVER SINK ABUTS WALL.
2. FOR EXTERIOR MASONRY AND SOLID WALLS APPLICATION PROVIDE SURFACE MOUNT WATER SUPPLY LINES. WHEN POSSIBLE ROUTE WATER SUPPLY LINES INSIDE INTERIOR STUD WALLS.
3. INCLUDE MOP HANGER, HOSE & HOSE BRACKET, WALL AND BUMPER GUARDS.

224000.00-02 - MOP SINK DETAIL

SCALE: NONE



KEYED NOTES:

1. CHECK VALVE.
2. 2.2 GALLON EXPANSION TANK.
3. ASME APPROVED TEMPERATURE AND PRESSURE RELIEF VALVE. 210°F, 125 PSI.
4. REFIEF PIPE, FULL SIZE OF OPENING.
5. DRAIN VALVE.
6. FLOOR DRAIN WITH FUNNEL SPOUT (INCLUDE MOP SINK IF USING RECIRC PUMP).
7. MOUNT ON BRACKETS OR SUSPEND FROM JOISTS ABOVE.
8. HEAT TRAP NIPPLE.
9. RECIRCULATING PUMP. REFER TO RECIRCULATING PUMP DETAIL FOR FURTHER PIPING SCHEMATICS.

223300.00-01 - SHELF - MOUNTED ELECTRIC WATER HEATER

SCALE: NONE

KLH

Professional
Engineers, PSC PC
MECHANICAL/ELECTRICAL ENGINEERS
WWW.KLHE.COM
205 CLIFF AVENUE
PELHAM, NY 11003
609-442-8000
FORT THOMAS, KENTUCKY

description

by

date

mark

revisions

06/15/2022

project

2022.27 / D13216

KLH

CAF

KFE

date

project

2022.27 / D13216

KLH

CAF

KFE

date

project

2022.27 / D13216

KLH

CAF

KFE

date

project

2022.27 / D13216

KLH

CAF

KFE

date

project

2022.27 / D13216

KLH

CAF

KFE

date

project

2022.27 / D13216

KLH

CAF

KFE

date

project

2022.27 / D13216

KLH

CAF

KFE

date

project

2022.27 / D13216

KLH

CAF

KFE

date

project

2022.27 / D13216

KLH

CAF

KFE

date

project

2022.27 / D13216

KLH

CAF

KFE

date

project

2022.27 / D13216

KLH

CAF

KFE

date

project

2022.27 / D13216

KLH

CAF

KFE

date

project

2022.27 / D13216

KLH

CAF

KFE

date

project

2022.27 / D13216

KLH

CAF

KFE

date

project

2022.27 / D13216

KLH

CAF

KFE

date

project

2022.27 / D13216

KLH

CAF

KFE

date

project

2022.27 / D13216

KLH

CAF

KFE

date

project

2022.27 / D13216

KLH

CAF

KFE

date

project

2022.27 / D13216

KLH

CAF

KFE

date

project

2022.27 / D13216

KLH

CAF

KFE

date

project

2022.27 / D13216

KLH

CAF

KFE

date

project

2022.27 / D13216

KLH

CAF

KFE

date

project

2022.27 / D13216

KLH

CAF

KFE

date

project

2022.27 / D13216

KLH

CAF

KFE

date

project

2022.27 / D13216

KLH

CAF

KFE

date

project

2022.27 / D13216

KLH

CAF

KFE

date

project

2022.27 / D13216

KLH

CAF

KFE

date

project

2022.27 / D13216

KLH

CAF

KFE

date

project

2022.27 / D13216

KLH

CAF

KFE

date

project

2022.27 / D13216

KLH

CAF

KFE

date

project

2022.27 / D13216

KLH

CAF

KFE

date

project

2022.27 / D13216

KLH

CAF

KFE

date

project

2022.27 / D13216

KLH

CAF

KFE

date

project

2022.27 / D13216

KLH

CAF

KFE

date

project

2022.27 / D13216

KLH

CAF

KFE

date

project

2022.27 / D13216

KLH

CAF

KFE

date

project

2022.27 / D13216

KLH

CAF

KFE

date

project

2022.27 / D13216

KLH

CAF

KFE

date

project

2022.27 / D13216

KLH

CAF

KFE

date

project

2022.27 / D13216

KLH

CAF

KFE

date

project

2022.27 / D13216

KLH

CAF

KFE

date

project

2022.27 / D13216

KLH

CAF

KFE

date

project

2022.27 / D13216

KLH

CAF

KFE

date

project

2022.27 / D13216

KLH

CAF

KFE

date

project

2022.27 / D13216

KLH

CAF

KFE

date

project

2022.27 / D13216

KLH

CAF

KFE

date

project

2022.27 / D13216

KLH