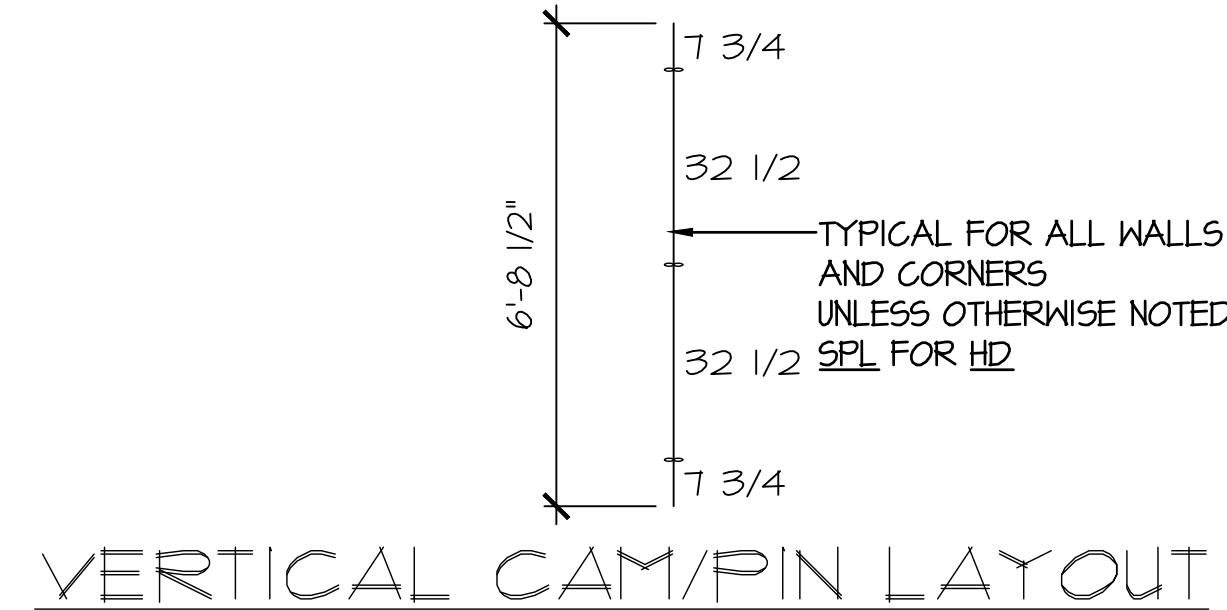
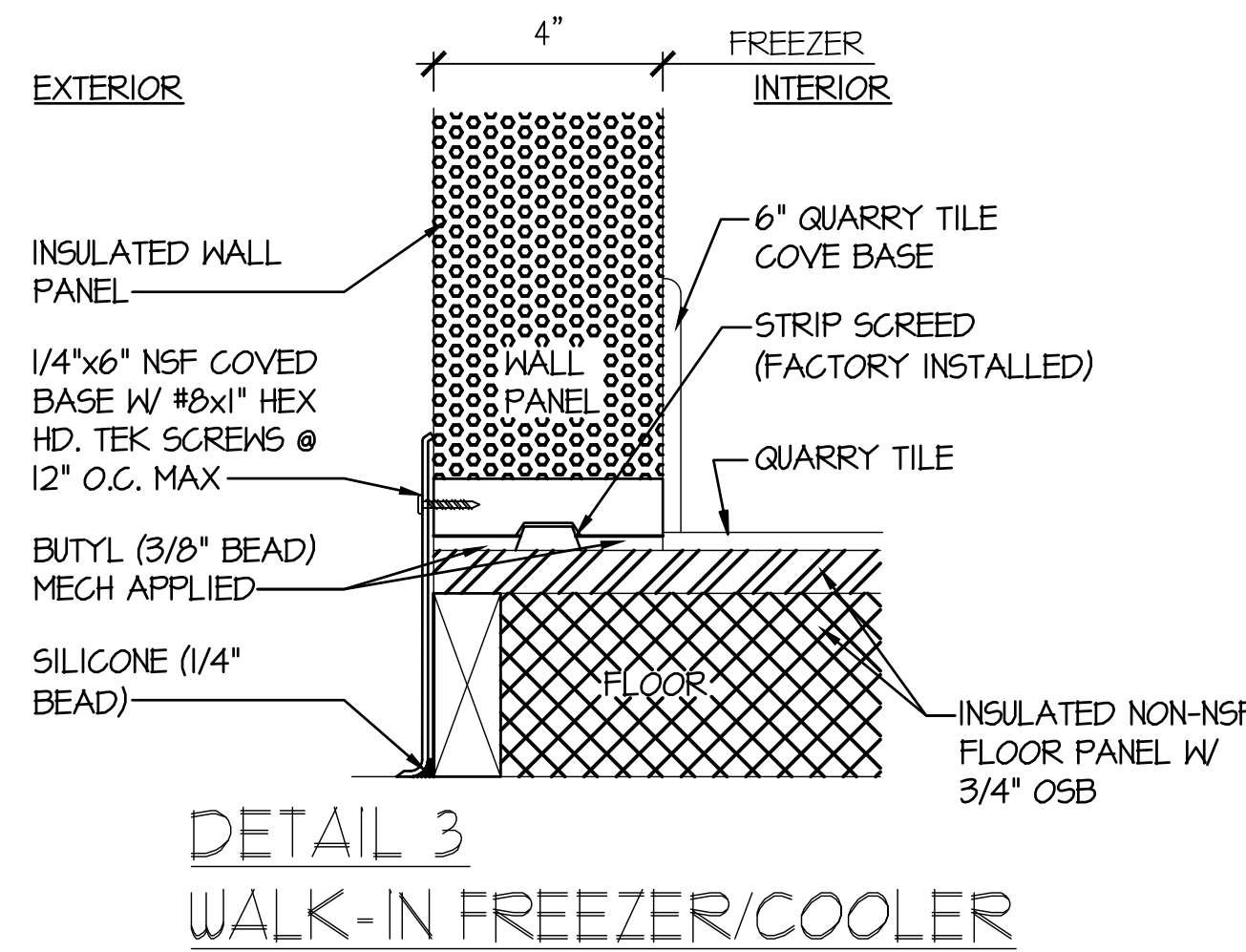
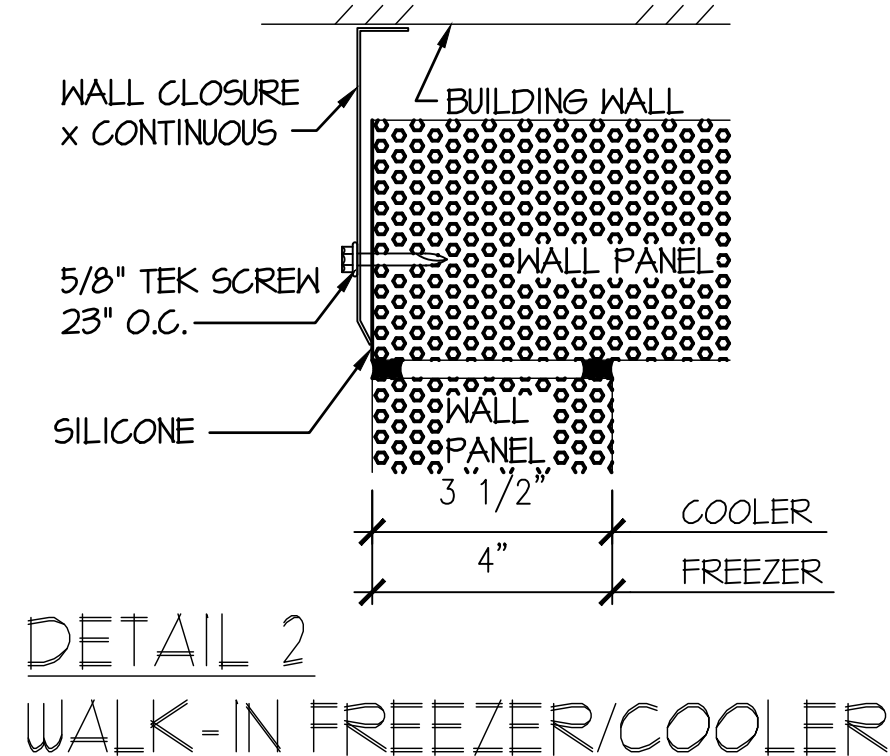
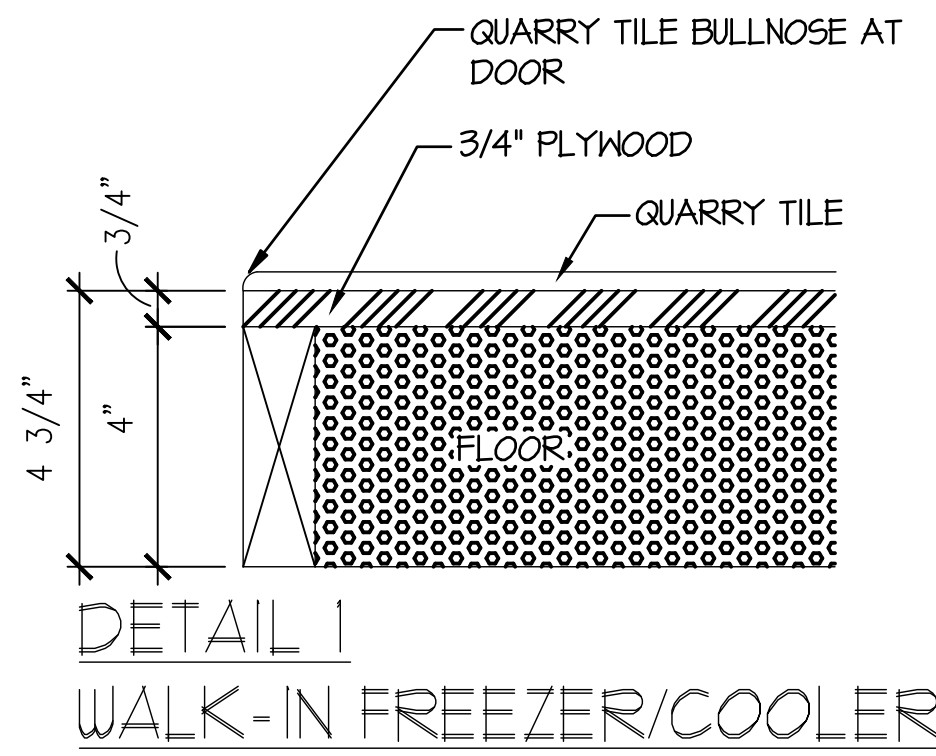
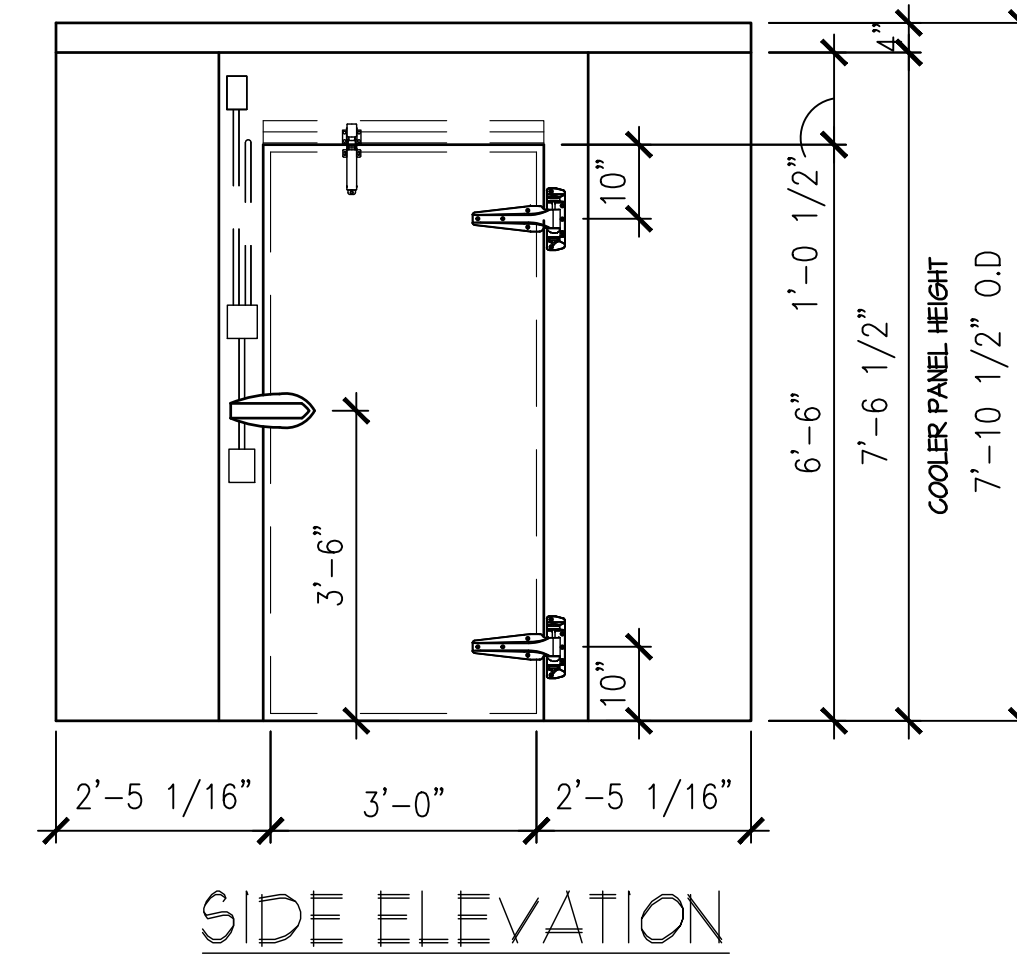
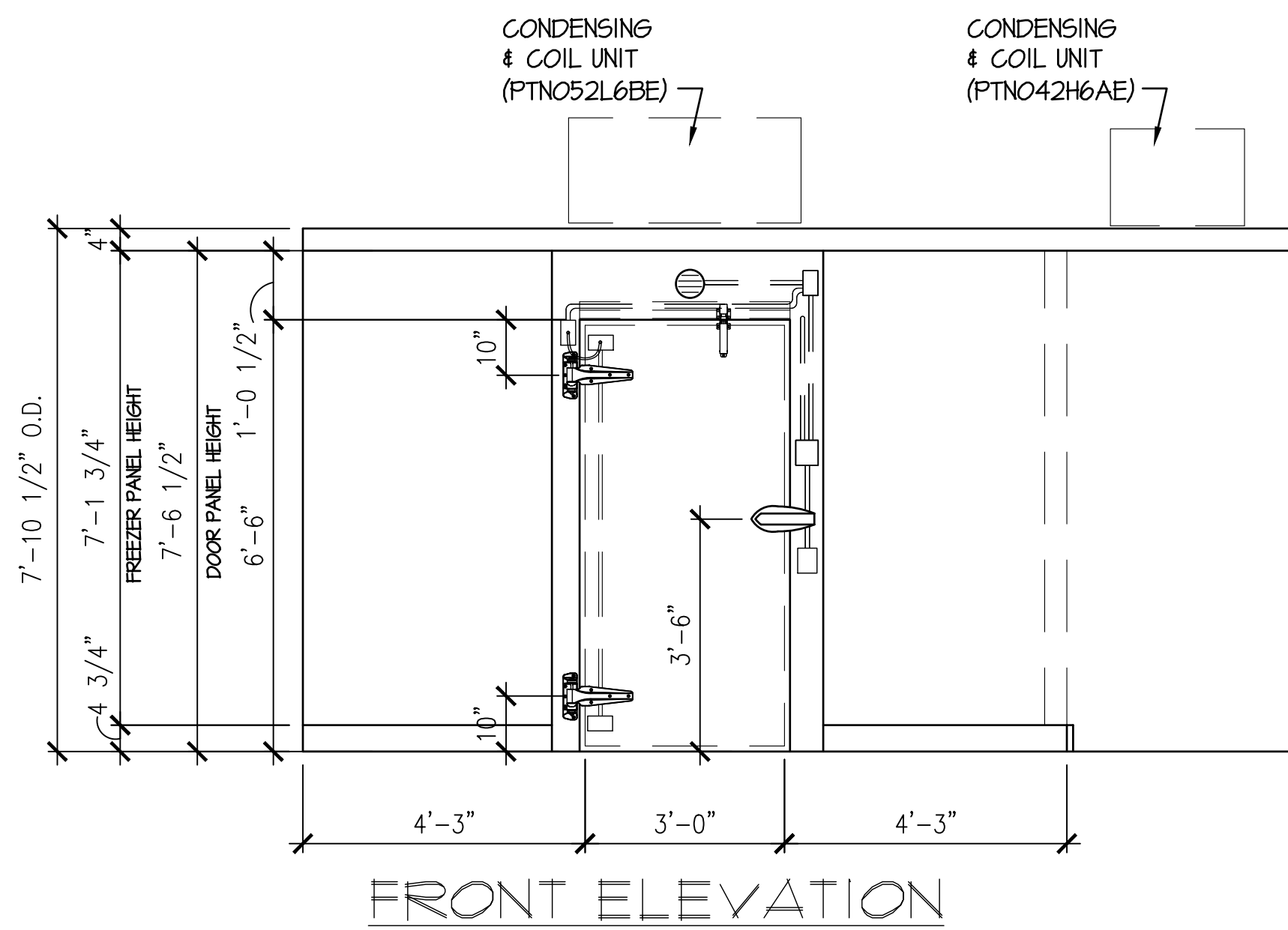
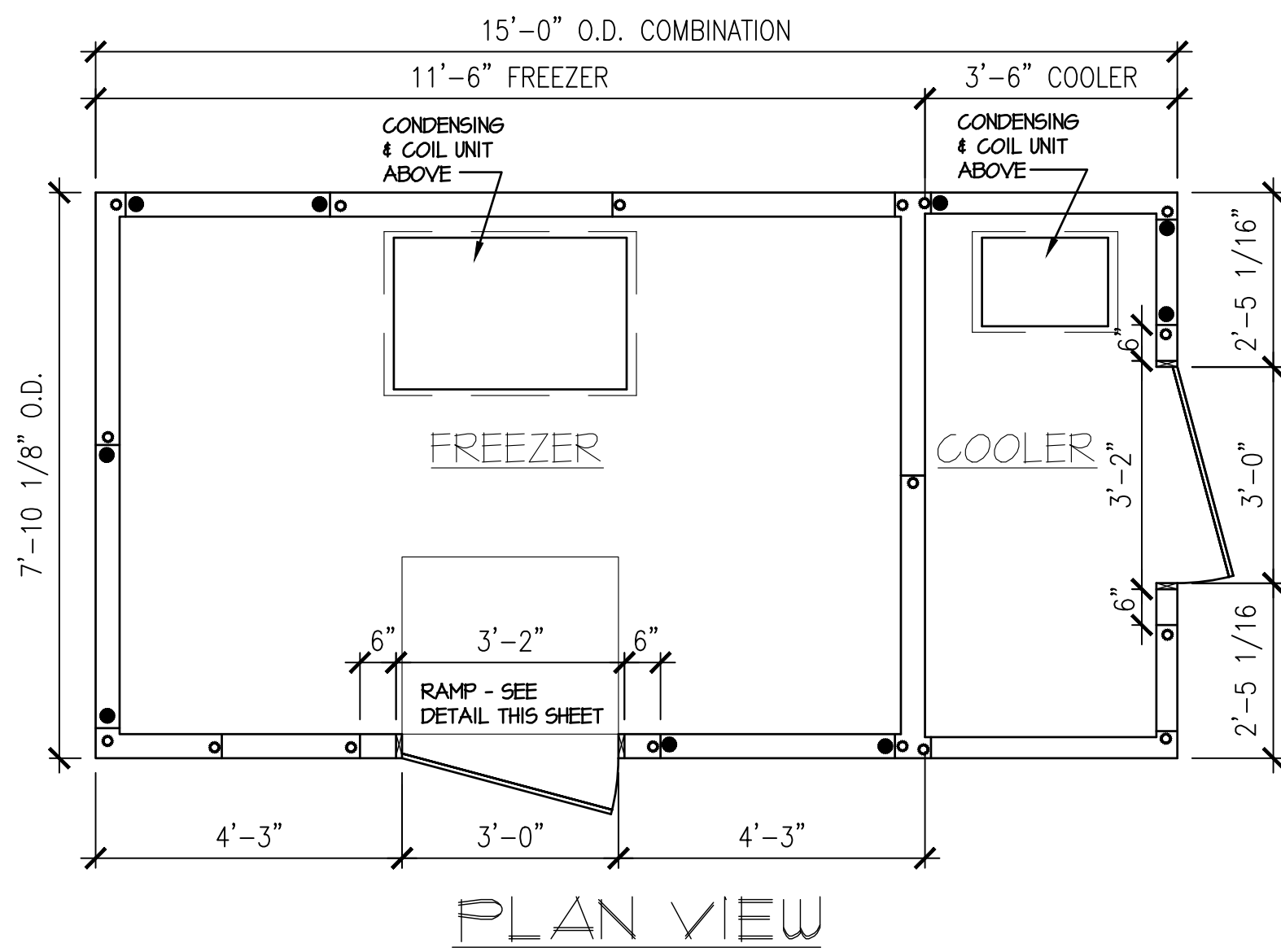




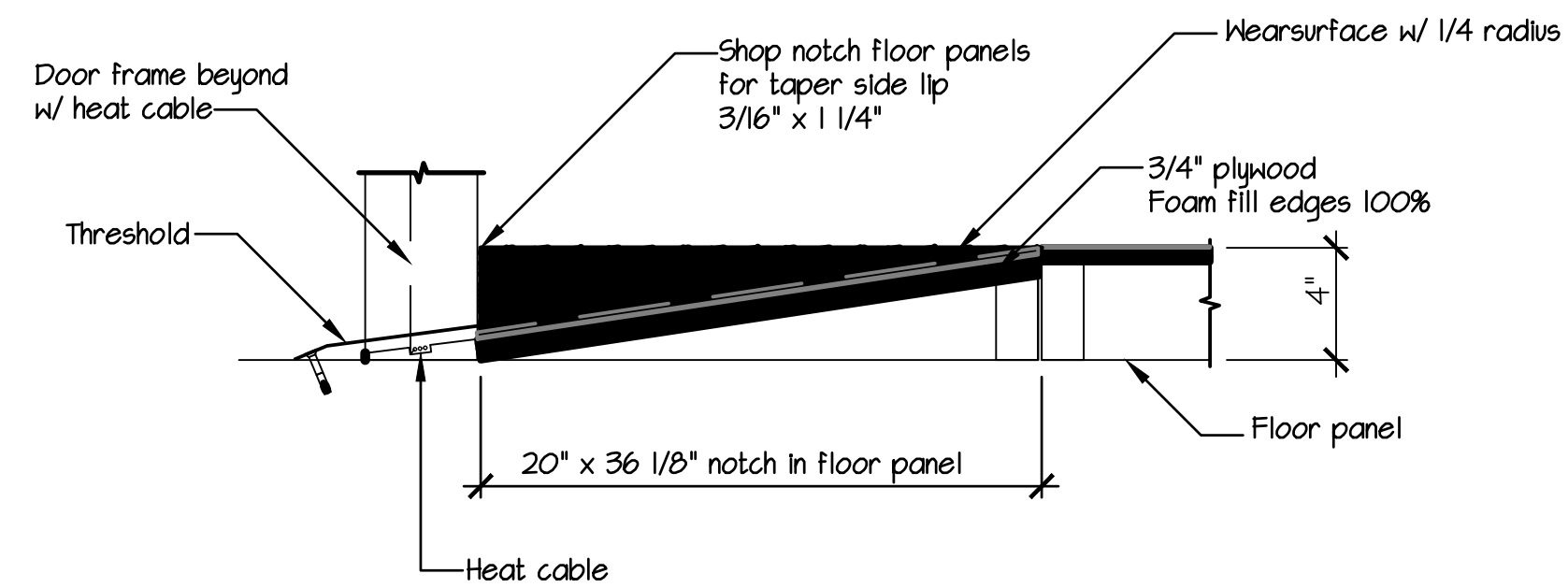
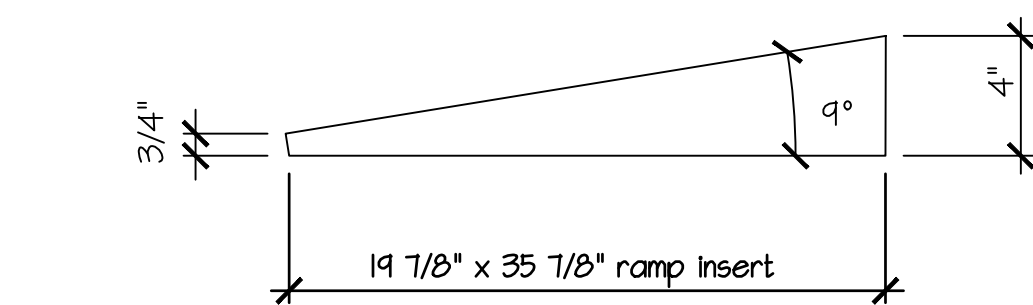
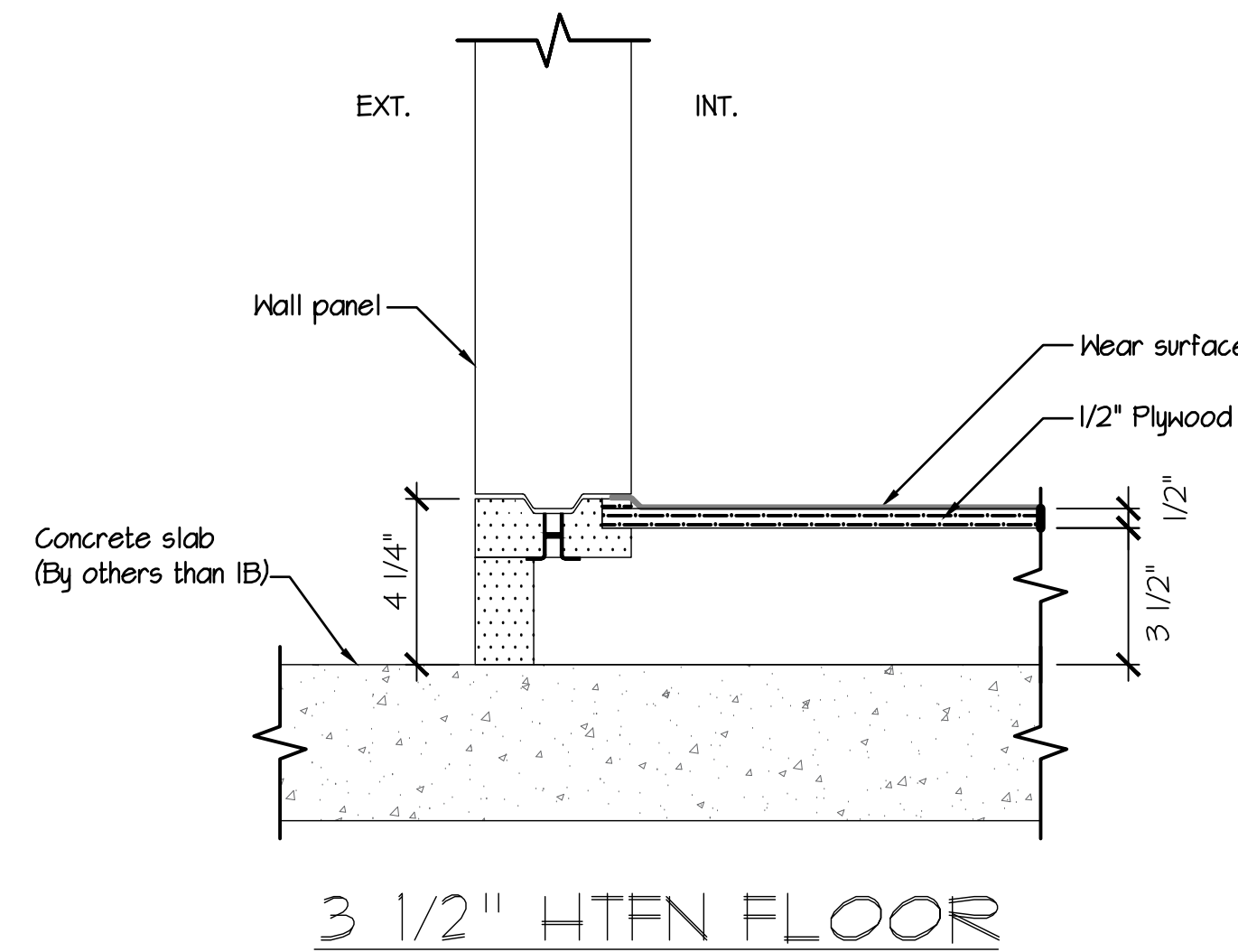
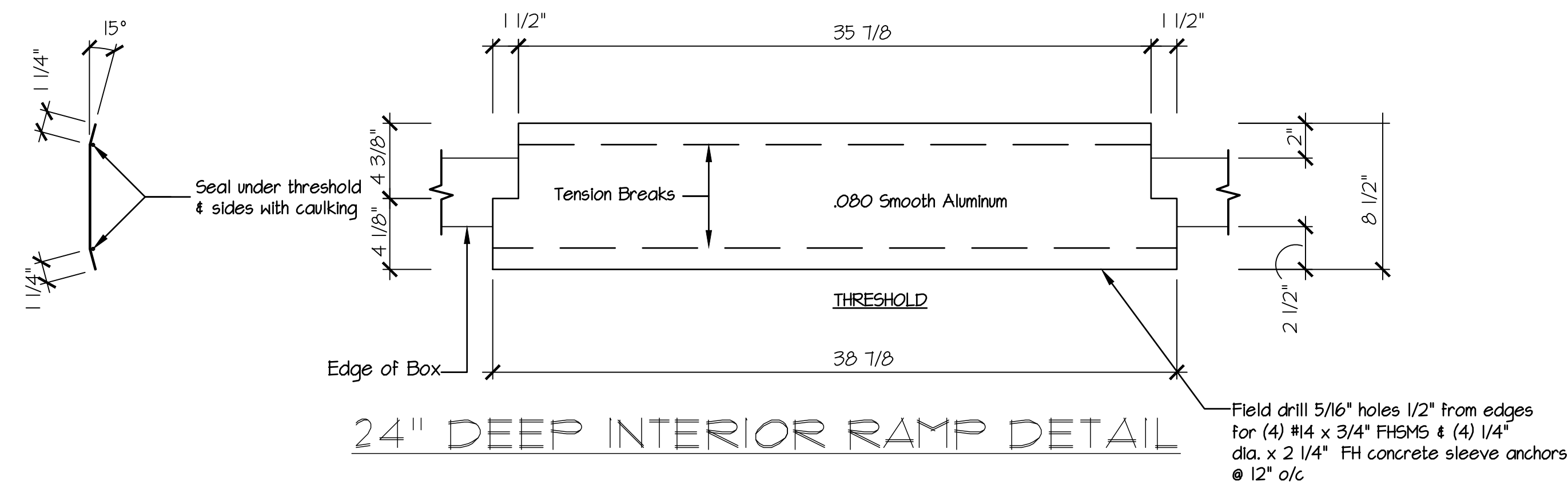
NSF LABEL
N.S.F. LISTED (STD #7)
N.S.F. GASKET @ ALL PANEL JOINTS



NOTE:
Packaged refrigeration systems need proper ventilation to operate correctly. A minimum of 1000 cfm per compressor horsepower of make up air and exhaust air is required for proper cooling. Failing to provide adequate ventilation can cause premature compressor failure and may void compressor warranty. Contact manufacturer for additional details.

Allow 2 feet clearance above refig. unit to remove top panel and to allow service access.

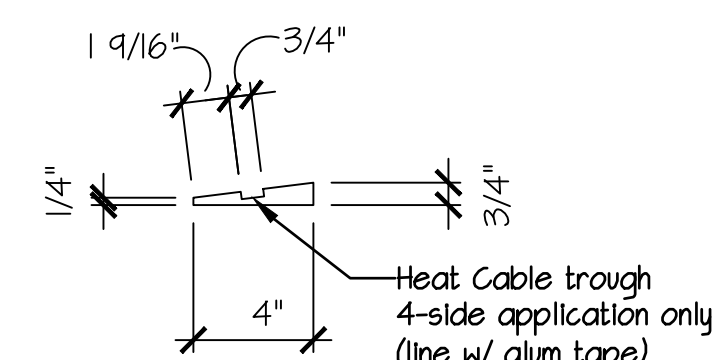
FINISH :
STUCCO GALV. STEEL INTERIOR
STUCCO GALV. STEEL EXTERIOR
STUCCO GALV. STEEL EXTERIOR FLOOR
QUARRY TILE FLOOR FINISH (NIC & MIF)



NOTE: Fill all voids solid below threshold w/ urethane foam or grout

NOTE: Due to construction variables seal threshold/jamb joint w/ silicone

NOTE: Raise door leaf 1/4" for sloped ramp sill



TAPERED THERMOLITE

SPECIFICATIONS

Indoor freezer (with floor)
Vinyl NSF gasket (1/16" joint thickness), Cam-lock layout SNI

SPECIAL INSTRUCTIONS
Standard crating

WALL PANELS

Construction: 4" urethane
Exterior Finish: Stucco galvalume
Interior Finish: Stucco galvalume
Ceiling connections: Camlock
Floor connections: Camlock

CEILING PANELS

Construction: 4" high density urethane
Exterior Finish: Metal
Interior Finish: Stucco galvalume
Ceiling Caps: Factory mounted
Live Load: 10 psf

FLOOR PANELS

Model: Hand-Truck Floor panels model #HTFN (NSF)
Construction: 3 1/2" high density urethane
w/ .063 aluminum diamond tread (low profile) @ interior
over 1/2" plywood
w/ Metal @ exterior

DOORS

- [A]: 36" x 75 1/4" flush model G3 self-closing freezer door
*** ELECTRICAL COMPONENTS PRE-WIRED ***
Frame: 4" high density urethane, 3-sided
w/ Stucco galvalume both sides
w/ 24 ga. stainless steel 430 (magnetic) liners
w/ 4-sided heat cable in frame [FL-4-116W]
(24"-11 1/2" x 5 ohms/ft (125 total ohms) @ 4.7 watts/ft + Pepi - 120V, 1A)
Leaf: 4" thick, 3-side lap, raised 1/4"
w/ Stucco galvalume both sides
w/ Magnetic gasket
(2) Component Hardware #K54 spring assisted adjustable hinge
(1) Kason #1224 handle only
(1) Kason #1044 hydraulic door closer
(1) Weiss XHAIIV temperature monitor w/ external buzzer
(2) Terminal J-box @ Int.
(1) Kason 1832 heated air vent (23W, 120V, 2A)
(1) .080 smooth aluminum threshold for interior ramp

REFRIGERATION

- (1) ea. Freezer - Indoor R404a self-contained system
1054 BTU/H @ 10°F TD with 14.1 hr runtime @ -10°F inside/45°F outside room
45°F @ cond. unit, 1284ft altitude
(1) Climate Control R404a air cooled self contained unit #PTN052L6BE
208-230V/160CHz/3HP Pro3 compressor
MCA-24, MOPD 530
42W x 52D x 19H x 28.0lbs.
Opening: 25W x 38.5D

NOTES

Meets 2009 Federal Energy Independence and Security Act Requirements.

STANDARD NOTES

- To prevent condensation, a minimum 2" from the walk-in exterior surface is required. High humidity conditions may require force ventilation in addition to clearance.
- Installation site floor must be true and level within 3/16" per 10' or additional costs may be incurred.
- Imperial Brown's sliding and vertical lift doors shall not be considered means of egress. Check code egress requirements for your application.

ELECTRICAL

Field electrician to verify maximum acceptable load for light switches. If load is too high, then relay type controls should be used.
After wiring devices, ALL conduits must be sealed to stop moisture transfer through electrical raceways. Failure to seal device per NEC codes WILL VOID WARRANTY.

REVISIONS

01 05/22/2014 process order

DOLLAR TREE
SHOPPING CENTER NAME
ADDRESS
drawing
project
WALK-IN DETAILS AND SPECIFICATIONS

DS2

FOR REFERENCE ONLY