

Drawing Name: S:\Projects\Ellenville CSD\2019 Bond Ref\AutoCAD\PLUM\Phase 1\P000.dwg Date last accessed: 3/21/2022 8:18 AM Date last plotted: 3/21/2022 8:40 AM Plotted By: Richard Allif

PLUMBING EQUIPMENT & FIXTURE SCHEDULE								
MARK	FIXTURE	CW	HW	SAN	V	DESCRIPTION	MANUFACTURER & MODEL NUMBER	REMARKS
WC-1	WATER CLOSET, ACCESSIBLE	1"	-	4"	2"	FLOOR MOUNTED WATER CLOSET, ELONGATED BOWL, SENSOR OPERATED FLUSH VALVE, ACCESSIBLE HEIGHT	ZURN Z5647-BWL ECOVANTAGE HET FLOOR MOUNTED ADA TOILET SYSTEM, SENSOR FLUSH VALVE ZEMS6000AV-MOB-W1	1, 3
LAV-1	LAVATORY, ACCESSIBLE	1/2"	1/2"	1-1/2"	1-1/2"	WALL HUNG LAVATORY, CONCEALED ARM CARRIER, 18"X20-1/2", SENSOR OPERATED FAUCET, MOUNTED AT ACCESSIBLE HEIGHT, TRAPS AND SUPPLIES INSULATED WITH TRUERO BRAND HAND LAY GUARD	ZURN Z5340 SERIES LAVATORY, Z6955-XL-S-W2 CONNECTED AQUA-FIT SERIO SERIES 4" CENTERSET BASE BATTERY SENSOR FAUCET	1, 3
LAV-2	LAVATORY, ACCESSIBLE	1/2"	1/2"	1-1/2"	1-1/2"	INTEGRAL BOWL WITH COUNTERTOP PROVIDED BY GENERAL CONTRACTOR, SENSOR OPERATED FAUCET, MOUNTED AT ACCESSIBLE HEIGHT, TRAPS AND SUPPLIES INSULATED WITH TRUERO BRAND HAND LAY GUARD	LAVATORY BY G.C. Z6955-XL-S-W2 CONNECTED AQUA-FIT SERIO SERIES 4" CENTERSET BASE BATTERY SENSOR FAUCET	1, 3
FS-1	FLOOR SINK	-	-	4"	2"	12" X 12" X 8" CAST BODY WITH 1/50, 1/2 GRATE, WHITE, ACID RESISTANCE PORCELAIN ENAMEL COATED INTERIOR, ANTI-SPLASH ALUMINUM DOME STRAINER	MIFAB FLOOR SINK FS1730-150	SEE PLANS FOR SIZES
FD-1	FLOOR DRAIN	-	-	-	2"	FLOOR DRAIN, 8" ROUND NICKEL BRONZE STRAINER, CAST IRON BODY, DEEP SEAL P TRAP	JOSAM COMPANY 30000-A	2
RD-1	ROOF DRAIN	-	-	3"	-	ROOF DRAIN, 12" DIA COMBINATION MAIN ROOF AND OVERFLOW DRAIN WITH LOW SILHOUETTE DOMES AND DOUBLE TOP-SET DECK PLATE	ZURN Z164	2
MR-1	MOP RECEPTOR	3/4"	3/4"	3"	1-1/2"	18 GA 300 SERIES STAINLESS STEEL MOP SINK W/ WAINSCOTING, 24X24, 27" HIGH, COMMERCIAL 2 HANDLE WALL MOUNT SERVICE FAUCET IN CHROME.	MOEN 8230, JOHN BOOS MSWC2424-27R	-
BV-1	BALANCE VALVE	-	3/4"	-	-	SELF ACTUATING THERMOSTATIC BALANCING VALVE WITH UNION BODY, BALL VALVES, STRAINER, CHECK VALVE AND THERMOMETER	CIRCUIT SOLVER CSUAS-3/4"-105-CV1-TW	-
GI-1	GREASE INTERCEPTOR	-	-	1-1/2"	1-1/2"	LIFETIME GUARANTEE AND MADE IN THE USA OF SEAMLESS, RATIONALLY MOLDED POLYETHYLENE, WITH RISER TO FINISHED FLOOR, BUILT-IN FLOW CONTROL CARTRIDGE, INTERCEPTOR GREASE CAPACITY SHALL BE 127 @ 50GPM.	SCHIER "GREAT BASIN" GREASE INTERCEPTOR "HYDRO MECHANICAL" MODEL GB-2	SEE DETAIL ON P801
REMARKS:	1. ALL ACCESSIBLE EQUIPMENT/FIXTURES TO BE INSTALLED PER ADA REQUIREMENTS.							
	2. SIZED PER PLAN.							
	3. SENSOR OPERATED VALVES TO BE BATTERY OPERATED.							

GENERAL SPECIFICATION NOTES:

- A. ALL WORK SHALL COMPLY WITH STATE AND LOCAL CODES.
- B. DOMESTIC WATER LINES SHALL BE TYPE L COPPER, LEAD FREE JOINTS, INSULATE ALL PIPING WITH PREFORMED FIBERGLASS PIPE INSULATION WITH ASJ COVER SIZED PER ENERGY CODE. ALL FITTINGS AND VALVES TO BE COVERED WITH PREFORMED PVC FITTING COVERS. ALL EXPOSED VERTICAL FIXTURE SUPPLY LINES TO BE COVERED WITH PVC JACKET TO 7" ABOVE FINISHED FLOOR.
- C. UNDERGROUND SANITARY AND VENT PIPING SHALL BE SERVICE WEIGHT CAST IRON, HUB AND SPIGOT WITH RUBBER GASKET PUSH JOINTS. ABOVE GROUND SANITARY AND VET PIPING SHALL BE DWV COPPER WITH DWV COPPER FITTINGS OR NO-HUB CAST IRON.
- D. IT IS THE RESPONSIBILITY OF THE PLUMBING CONTRACTOR TO FIELD VERIFY EXISTING CONDITIONS WITHIN THE BUILDING PRIOR TO COMMENCEMENT OF ALL DEMOLITION AND NEW WORK.
- E. IT IS THE RESPONSIBILITY OF THE PLUMBING CONTRACTOR TO REMOVE AND REPLACE EXISTING CEILINGS UNLESS OTHERWISE NOTED ON THE ARCHITECTURAL DRAWINGS, FOR PERFORMING DEMOLITION OR NEW WORK WITHIN THE BUILDING. THE CONTRACTOR SHALL REINSTALL THE CEILING SYSTEMS TO MATCH THE ORIGINAL INSTALLATION. ANY CEILING SYSTEM COMPONENT DAMAGED DURING DEMOLITION, STORAGE, OR RE-INSTALLATION SHALL BE REPLACED WITH A NEW AT NO EXPENSE TO THE OWNER.
- F. ALL PIPING AND CONDUIT PENETRATIONS THRU RATED WALLS OR FLOORS SHALL BE PROVIDED WITH FIRE/SMOKE STOPPING.
- G. UNLESS SHOWN ON THE ARCHITECTURAL DRAWINGS, IT IS THE RESPONSIBILITY OF THE PLUMBING CONTRACTOR TO PATCH AND FINISH ALL EXISTING PIPE PENETRATIONS AND TRENCHING THRU FLOOR AND WALLS AFTER DEMOLITION. IN ADDITION, ALL NEW PENETRATIONS AND TRENCHING SHALL BE PROVIDED FOR INSTALLATION OF PLUMBING SYSTEMS INCLUDING, BUT NOT LIMITED TO, EQUIPMENT, PIPING, ETC.
- H. UNLESS OTHERWISE INDICATED ON PLANS, PROVIDE WATER HAMMER ARRESTORS ON BRANCH PIPING TO EACH TOILET ROOM, LAUNDRY ROOM, SOLENOID VALVE, OR AS OTHERWISE REQUIRED BY CODE.

PIPING LEGEND

XX	PIPING
XX	PIPING BELOW GRADE
XX	EXISTING PIPING
CW	COLD WATER
HW	HOT WATER
HWR	HOT WATER RECIRCULATING
SAN	SANITARY SEWER
AW	ACID WASTE
IW	INDIRECT WASTE
ST	STORM SEWER
RDL	RAIN LEADER
ORD	OVERFLOW ROOF DRAIN
RD	ROOF DRAIN
CA	COMPRESSED AIR
LA	LABORATORY COMPRESSED AIR
MA	MEDICAL COMPRESSED AIR
CL	CHLORINATED WATER
DE	DEIONIZED WATER
DI	DISTILLED WATER
SW	SOFT WATER
DWS	CHILLED DRINKING WATER SUPPLY
DWR	CHILLED DRINKING WATER RECIRCULATING
LS	LAWN SPRINKLER SUPPLY
DF	DIESEL FUEL
FILL	FILL LINE
FOF	FUEL OIL FILL
FOG	FUEL OIL GAUGE
FOS	FUEL OIL SUPPLY
FOR	FUEL OIL RETURN
LO	LUBRICATING OIL
WO	WASTE OIL
G	GAS - LOW PRESSURE
MG	GAS - MEDIUM PRESSURE
HG	GAS - HIGH PRESSURE
LPG	LIQUEFIED PROPANE GAS
NLG	NON-LEADED GASOLINE
PG	PREMIUM GASOLINE
RG	REGULAR GASOLINE
H	HUMIDIFICATION LINE
O2	OXYGEN
LO2	LIQUID OXYGEN
N2	NITROGEN
N2O	NITROUS OXIDE
CO2	CARBON DIOXIDE
VA	VACUUM
VPD	VACUUM PUMP DISCHARGE
MV	MEDICAL VACUUM
LV	LABORATORY VACUUM
WVC	WET VACUUM CLEANING
DVC	DRY VACUUM CLEANING
SP	FIRE PROTECTION/SPRINKLER
V	VENT
AV	ACID WASTE VENT
GV	GAS VENT
FOV	FUEL OIL VENT
WOV	WASTE OIL VENT
////	PLUMBING TO BE REMOVED

FIXTURES & FITTINGS LEGEND

TEE OUTLET - UP
TEE OUTLET - DOWN
CONNECTION - BOTTOM
CONNECTION - TOP
ELBOW - TURNED UP
ELBOW - TURNED DOWN
PIPE CAP
UNION
FLANGE
BALL VALVE
BALL VALVE WITH MEMORY STOP
BALANCING VALVE
CHECK VALVE
BUTTERFLY VALVE
CONTROL VALVE, PNEUMATIC 2-WAY
GATE VALVE
GLOBE VALVE
PLUG VALVE
PRESSURE RELIEF VALVE
TEMPERATURE-PRESSURE RELIEF VALVE
PRESSURE REDUCING VALVE
COMBINATION VALVE (ISOLATION, CHECK, BALANCING)
MOTOR OPERATED VALVE
SOLENOID OPERATED VALVE
GAS PRESSURE REGULATOR
REDUCER, CONCENTRIC
REDUCER, ECCENTRIC
CLEAN OUT
FLOOR CLEAN OUT
WALL CLEAN OUT
HOSE BIBB
NON FREEZE HOSE BIBB
NON FREEZE WALL HYDRANT
YARD HYDRANT
FLOOR DRAIN
FUNNEL FLOOR DRAIN
FLOOR SINK
ROOF DRAIN
PIPE GUIDE
PIPE ANCHOR
FLEXIBLE PIPE CONNECTOR
EXPANSION JOINT
FLOW SWITCH
PRESSURE SWITCH
AQUASTAT
PRESSURE GAUGE
PRESSURE GAUGE WITH SYPHON (STEAM)
THERMOMETER
STRAINER
STRAINER WITH BLOWOFF
VACUUM BREAKER
INLINE PUMP
WATER HAMMER ARRESTER
REDUCED PRESSURE ZONE BACK FLOW PREVENTER
DOUBLE CHECK VALVE ASSEMBLY
STEAM TRAP
SHOWER HEAD
GAS OUTLET (O2, VACUUM, MEDICAL AIR)
SPRINKLER HEAD
POINT OF CONNECTION
POINT OF REMOVAL



50 FRONT STREET, SUITE 202
NEWBURGH, NEW YORK 12550
TEL (800) 274-9000

REVISIONS	DESCRIPTION		ADDENDUM NO 3	
	NO.	DATE	BY	RLA
	1	3/21/22		

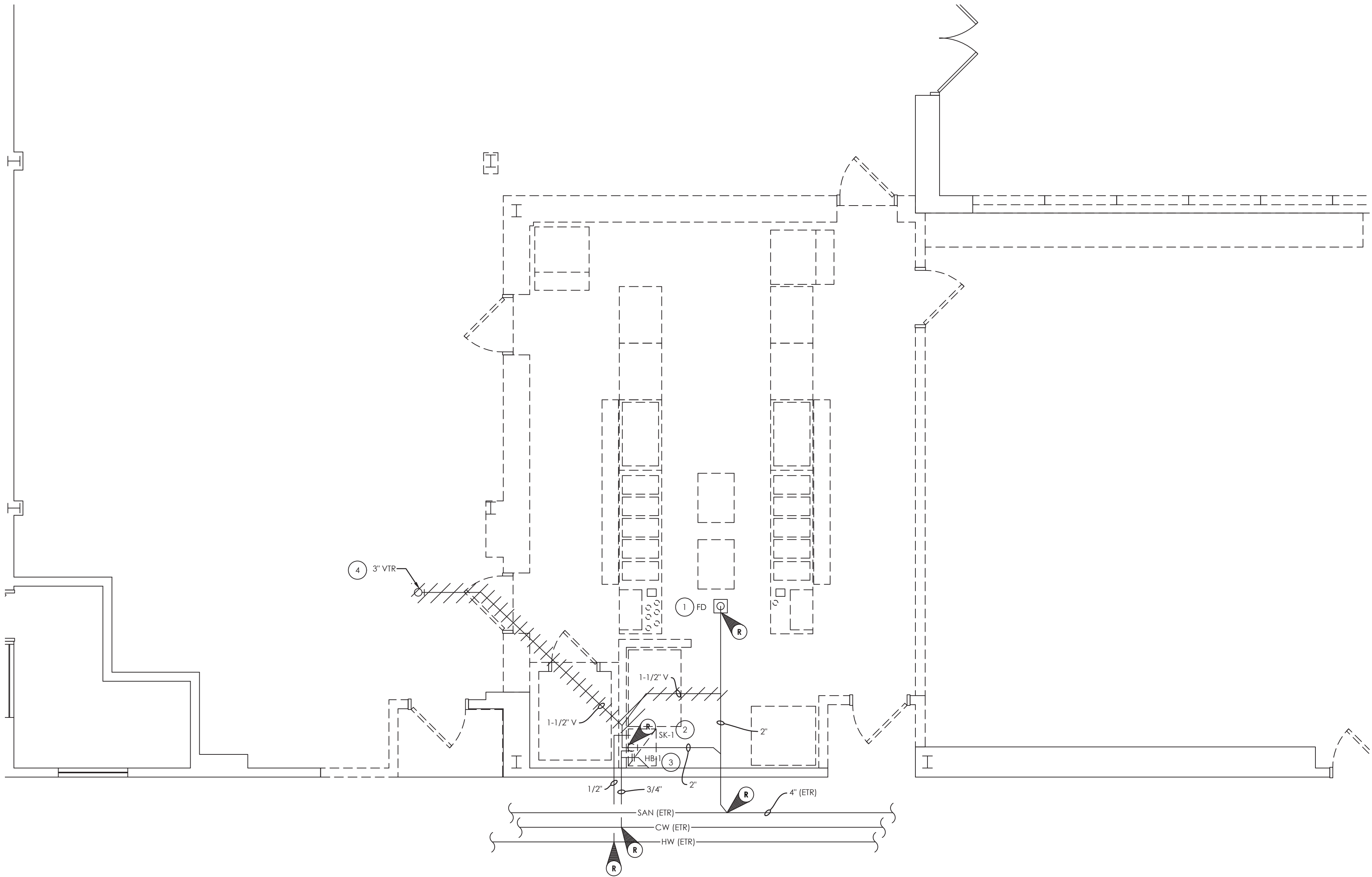


ELLENVILLECENTRAL SCHOOL DISTRICT
2020 CAPITAL IMPROVEMENT PROJECT
VOLUME 1
ES LIBRARY RELOCATION & CAFETERIA ADDITION
ELLENVILLE ES: SED #62-20-02-06-0-008-010

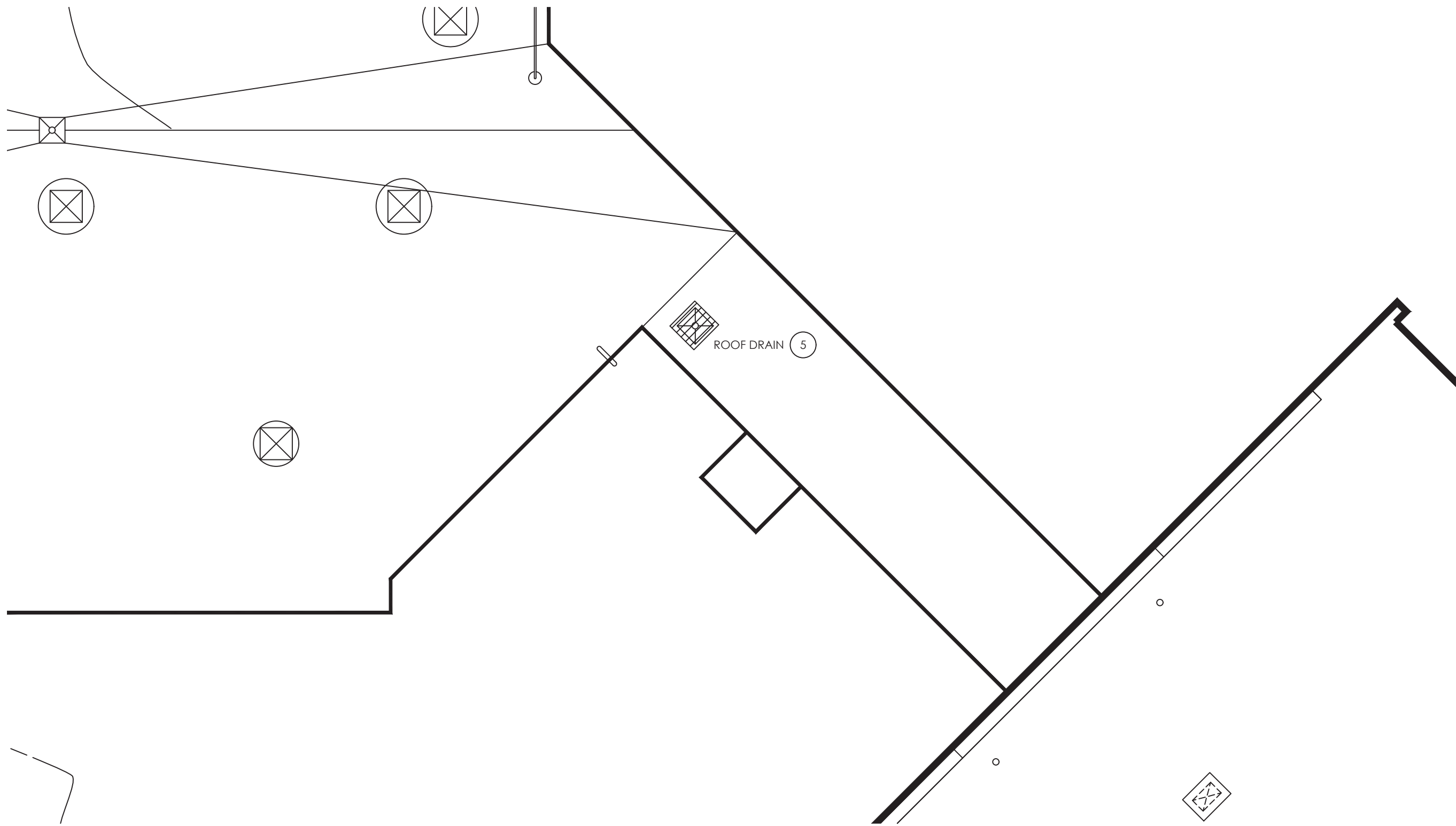
DATE	DRAWN	CHECKED
05/04/2021	BKM	AS
SCALE	AS NOTED	
SHEET TITLE	PLUMBING SYMBOLS LIST	

PROJECT NUMBER
14426.04
GEN
P000
DRAWING NUMBER

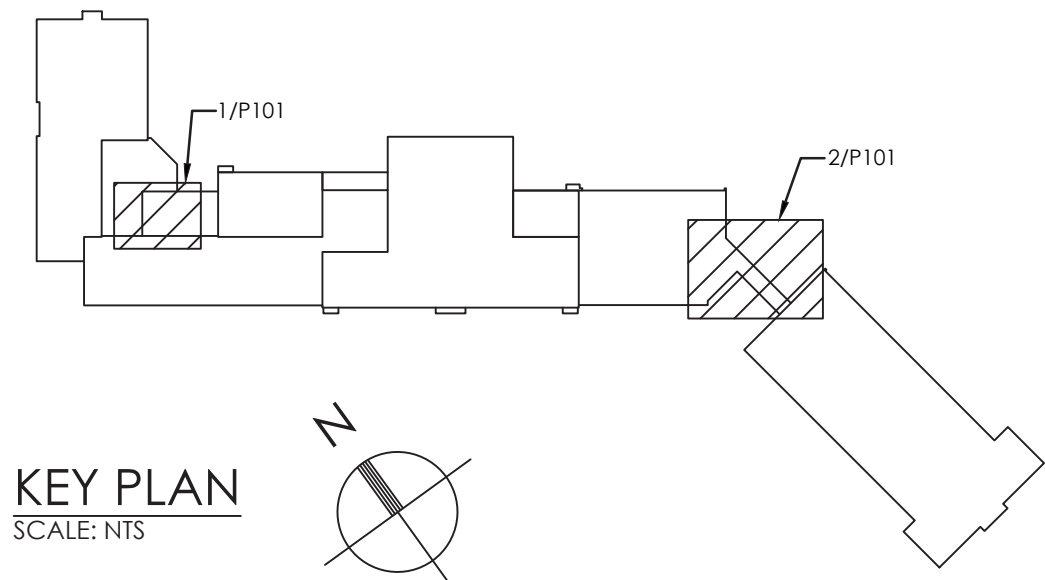
Drawing Name: S:\Projects\Ellenville CSD\2019 Bond Ref\0 Design\06 CAD\AutoCAD\PLUM\PHASE 1\PHASE 1\EES P101.dwg Date last accessed: 7/21/2022 1:28 PM Date last plotted: 7/21/2022 2:43 PM Plotted By: Jack Bozek



1
P101
ELEMENTARY SCHOOL KITCHEN PLUMBING DEMOLITION
SCALE: 1/4" = 1'-0"



2
P101
ELEMENTARY SCHOOL ROOF PLUMBING DEMOLITION
SCALE: 1/8" = 1'-0"



GENERAL NOTES:

1. FIELD VERIFY PIPE SIZES AND LOCATIONS PRIOR TO DEMOLITION.

KEY NOTES:

1. REMOVE EXISTING FLOOR DRAIN IN ITS ENTIRETY AND CAP SANITARY PIPING BELOW GRADE. PATCH HOLES IN FLOOR WHERE PIPES REMOVED, COORDINATE WITH G.C.
2. REMOVE EXISTING SINK IN ITS ENTIRETY AND CAP SANITARY BELOW GRADE. AND REMOVE DOMESTIC PIPING BACK TO MAIN IN PIPE TUNNEL. PATCH HOLES IN FLOOR/WALL WHERE PIPES REMOVED, COORDINATE WITH G.C. REMOVE VENT PIPING BACK TO VENT THROUGH ROOF.
3. REMOVE EXISTING HOSE BIB AND COLD WATER PIPING BACK TO MAIN IN PIPE TUNNEL BELOW CORRIDOR. PATCH HOLES IN FLOOR WHERE PIPES REMOVED, COORDINATE WITH G.C.
4. REMOVE EXISTING VENT THROUGH ROOF. PATCH OPENING WITH LIKE CONSTRUCTION. MAINTAIN ALL EXISTING ROOF WARRANTIES.
5. DISCONNECT EXISTING ROOF DRAIN TO ACCOMMODATE NEW ROOF WORK AND ROOF SUPPORTS. SAVE FOR REINSTALLATION. COORDINATE WITH G.C.



CPLteam.com
ARCHITECTURE • ENGINEERING • PLANNING

50 FRONT STREET, SUITE 202
NEWBURGH, NEW YORK 12550
TEL (800) 274-9000

REVISIONS	DESCRIPTION		
	NO.	DATE	BY



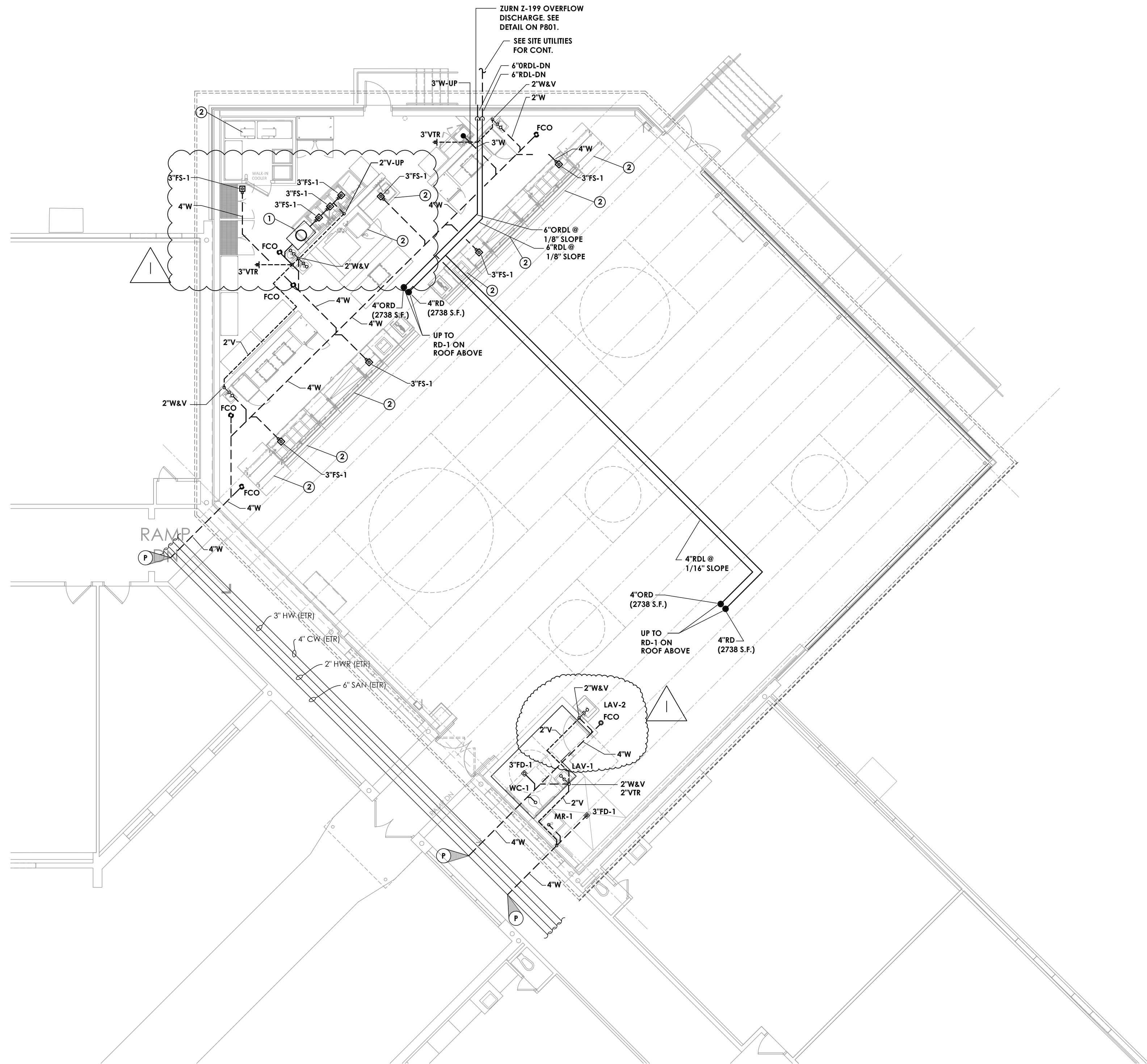
ELLENVILLECENTRAL SCHOOL DISTRICT
2020 CAPITAL IMPROVEMENT PROJECT

VOLUME 1
ES LIBRARY RELOCATION & CAFETERIA ADDITION
ELLENVILLE ES; SED #62-20-02-06-0-008-010

DATE 05/04/2021	DRAWN BKM	CHECKED AS
SCALE: AS NOTED		
SHEET TITLE EXISTING KITCHEN PLUMBING DEMOLITION PLAN		

PROJECT NUMBER
14426.04

EES
P101
DRAWING NUMBER



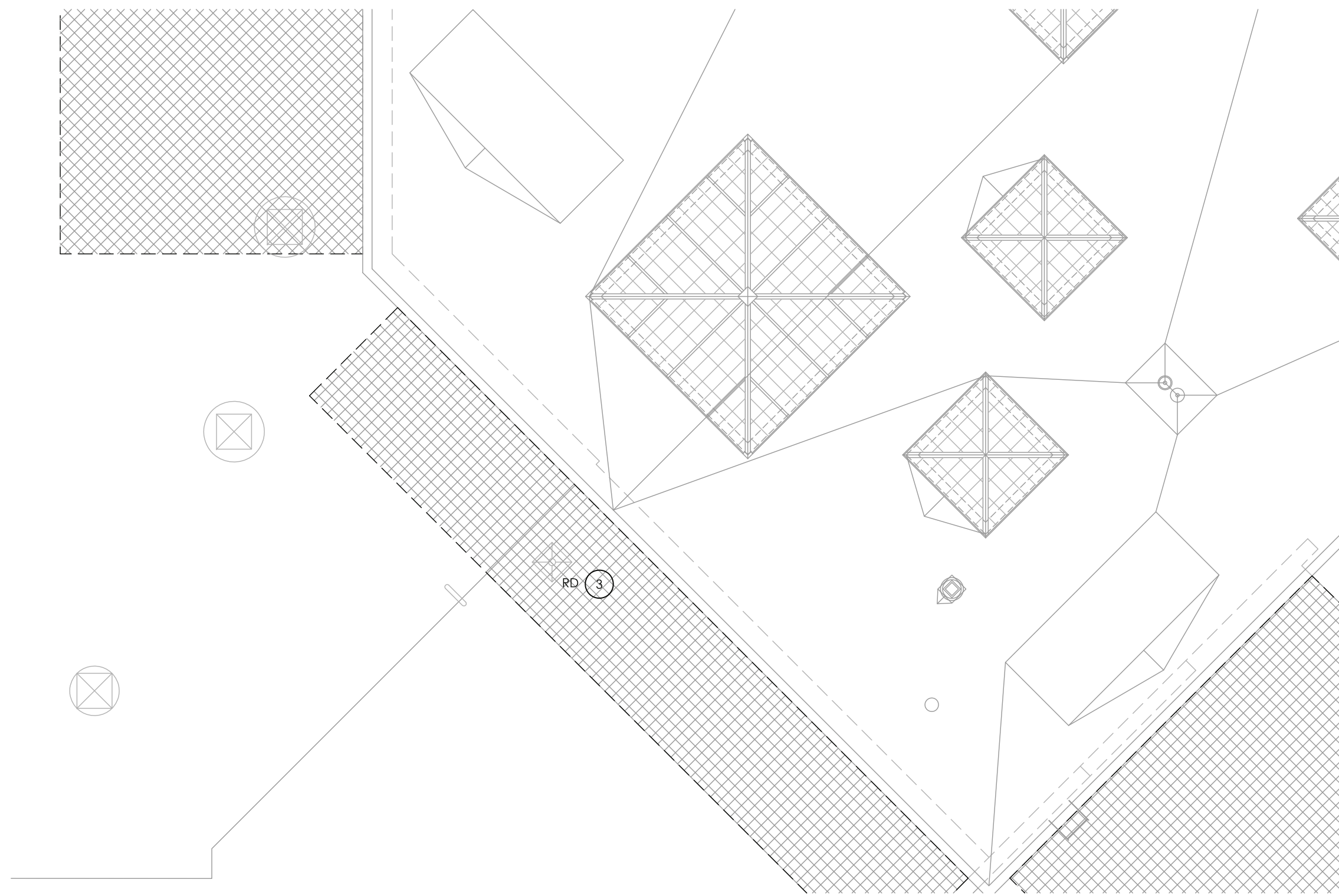
1
P201
ELEMENTARY SCHOOL CAFETERIA ADDITION
SCALE: 1/8" = 1'-0"

GENERAL NOTES:

1. ALL WORK SHALL COMPLY WITH LOCAL AUTHORITY HAVING JURISDICTION.
2. PROVIDE INDIRECT DRAIN PIPING TO FLOOR SINKS. SEE KITCHEN EQUIPMENT SCHEDULE FOR PIPE SIZES.
3. PROVIDE MIN. WASTE PIPING SLOPES TO COMPLY WITH LOCAL REQUIREMENTS.
4. COORDINATE ALL PLUMBING SYSTEM REQUIREMENTS WITH THE KITCHEN EQUIPMENT VENDOR & GENERAL CONTRACTOR.

KEY NOTES:

- 1 GREASE INTERCEPTOR (GI-1). SEE DETAILS ON P801. COORDINATE LOCATION WITH STRUCTURAL FOOTING.
- 2 ROUTE INDIRECT DRAIN TO CLOSEST 3"FS-1 SEE KITCHEN VENDOR EQUIPMENT SCHEDULE FOR SIZES.
- 3 REINSTALL EXISTING ROOF DRAIN. IN SAME LOCATION. RECONNECT EXISTING PIPING. MODIFY PIPING AS NECESSARY TO ACCOMMODATE NEW ROOF SUPPORTS. MAINTAIN ALL ROOF WARRANTIES. COORDINATE WITH G.C.



2
P201
ELEMENTARY SCHOOL CAFETERIA ROOF PLAN
SCALE: 1/8" = 1'-0"



CPLteam.com
ARCHITECTURE • ENGINEERING • PLANNING

50 FRONT STREET, SUITE 202
NEWBURGH, NEW YORK 12550
TEL (800) 274-9000

REVISIONS	NO.	DATE	BY	DESCRIPTION
	1	3/21/22	RLA	ADDENDUM NO. 3

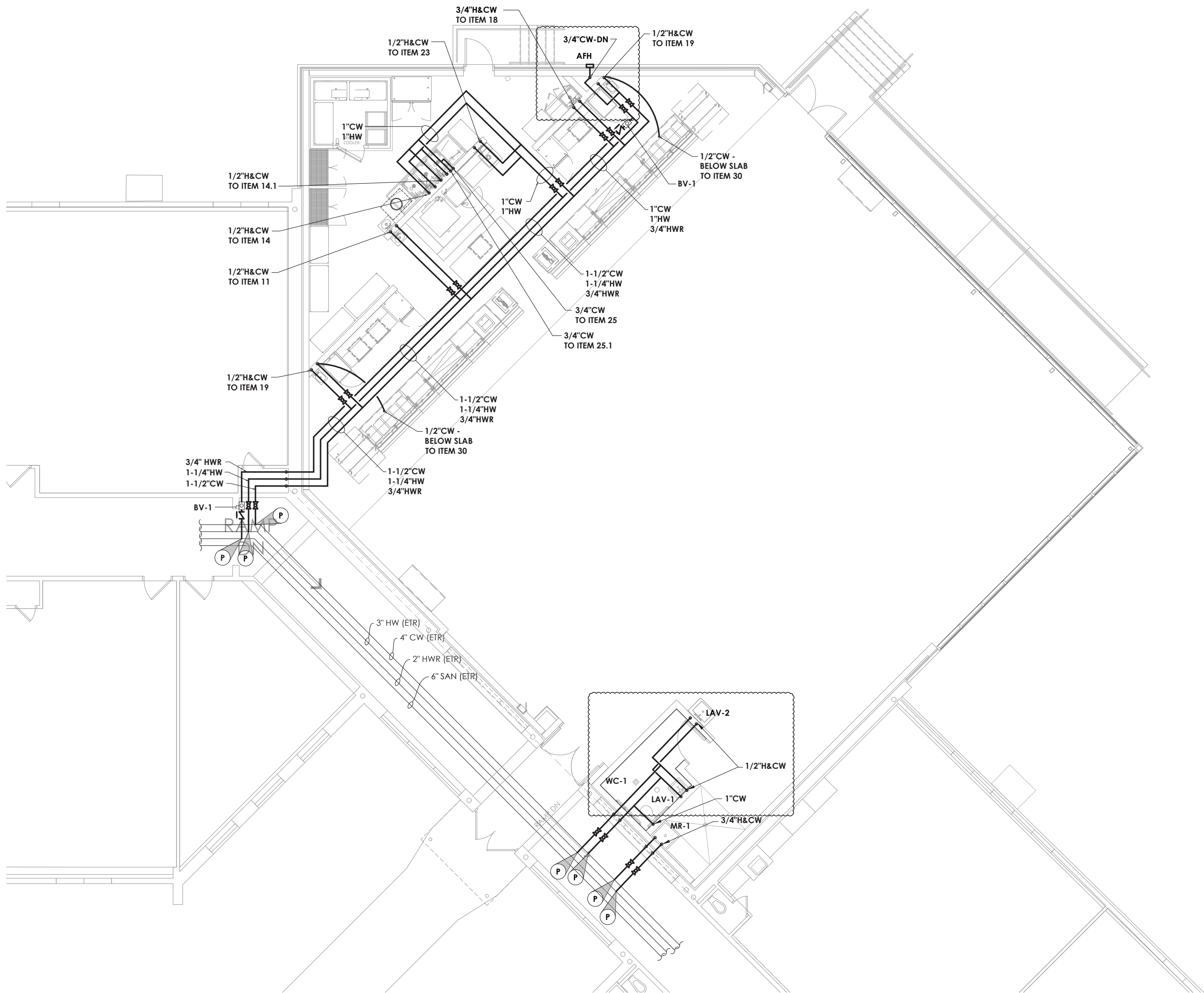


ELLENVILLE CENTRAL SCHOOL DISTRICT
2020 CAPITAL IMPROVEMENT PROJECT
VOLUME 1
ES LIBRARY RELOCATION & CAFETERIA ADDITION
ELLENVILLE ES: SED #62-20-02-06-0-008-010

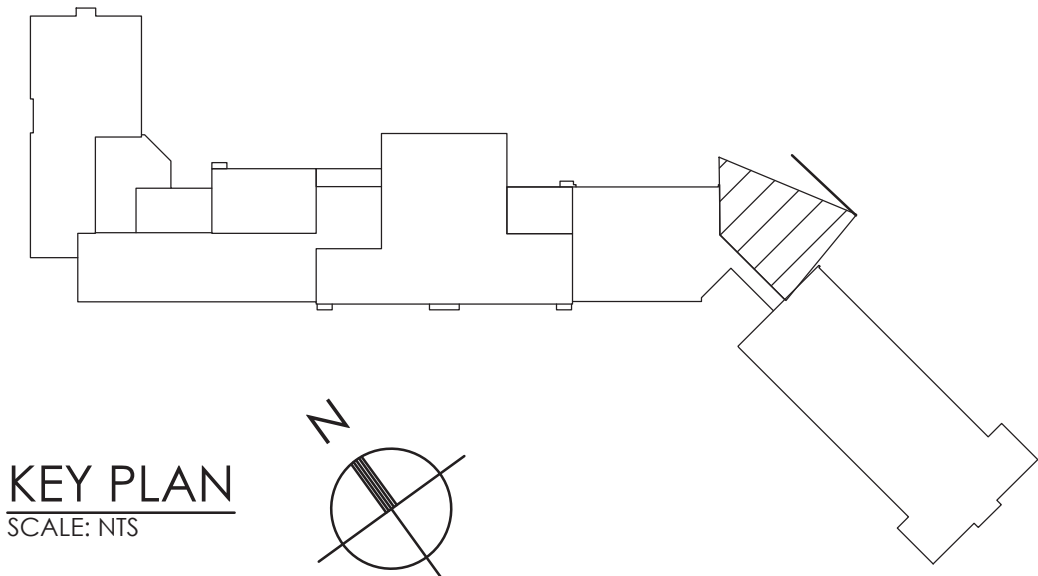
DATE	DRAWN	CHECKED
5/04/2021	XXX	XXX
SCALE	AS NOTED	
SHEET TITLE		
ES CAFETERIA ADDITION		
PLUMBING NEW WORK		
PLANS - SANITARY AND		
STORM DRAINAGE		

PROJECT NUMBER
14426.04
EES
P201
DRAWING NUMBER


Drawing Name: S:\Projects\Ellenville CSD\2019 Bond Ref\VD Design\06 CAD\AutoCAD\PLUM\P3\Phase 1\EES P301.dwg Date last accessed: 1/13/2022 2:49 PM Date last plotted: 1/13/2022 2:51 PM Plotted By: Richard Aliff



1
P301
ELEMENTARY SCHOOL CAFETERIA ADDITION
SCALE: 1/8" = 1'-0"



- GENERAL NOTES:**
1. ALL WORK SHALL COMPLY WITH LOCAL AUTHORITY HAVING JURISDICTION.
 2. PROVIDE BACKFLOW DEVICES AT EQUIPMENT PER LOCAL REQUIREMENTS. INCLUDING INSTALLATION REQUIREMENTS.
 3. PROVIDE TEMPERATURE MIXING VALVES AT EACH HAND SINK IF THE SERVICE TEMPERATURE EXCEEDS 110 F FROM THE SUPPLY LINES.
 4. PROVIDE SHOCK / WATER HAMMER ARRESTOR AT THE TOP OF EACH COLD & HOT WATER DROP AT EACH LOCATION.
 5. COORDINATE ALL PLUMBING SYSTEM REQUIREMENTS WITH THE KITCHEN EQUIPMENT VENDOR & ALL OTHER APPLICABLE TRADES.



CPLteam.com
ARCHITECTURE • ENGINEERING • PLANNING

50 FRONT STREET, SUITE 202
NEWBURGH, NEW YORK 12550
TEL (800) 274-9000

REVISIONS		BY	DATE	DESCRIPTION
NO.				

ELLENVILLECENTRAL SCHOOL DISTRICT
2020 CAPITAL IMPROVEMENT PROJECT

VOLUME 1

ES LIBRARY RELOCATION & CAFETERIA ADDITION

ELLENVILLE ES; SED #62-20-02-06-0-008-010

DATE	DRAWN	CHECKED
05/04/2021	xxx	xxx

SCALE: AS NOTED

SHEET TITLE

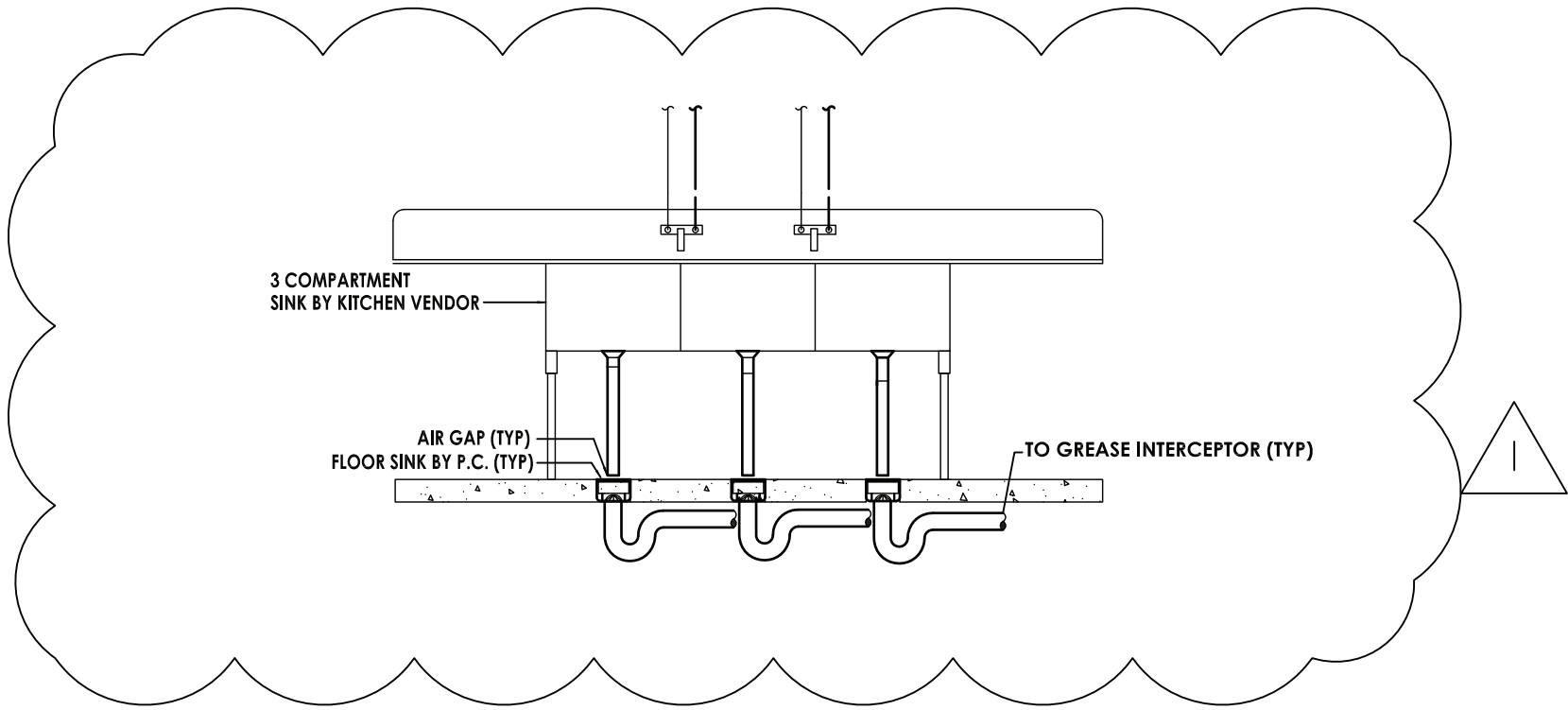
ES CAFETERIA ADDITION
PLUMBING NEW WORK
PLANS - DOMESTIC
WATER

PROJECT NUMBER

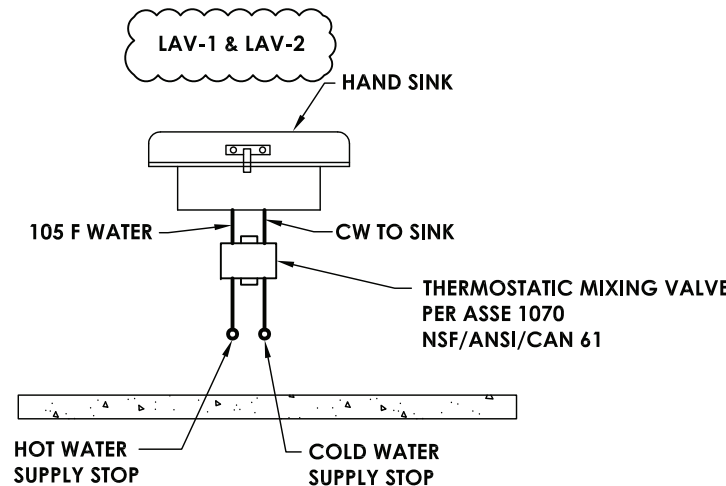
14426.04

EES
P301

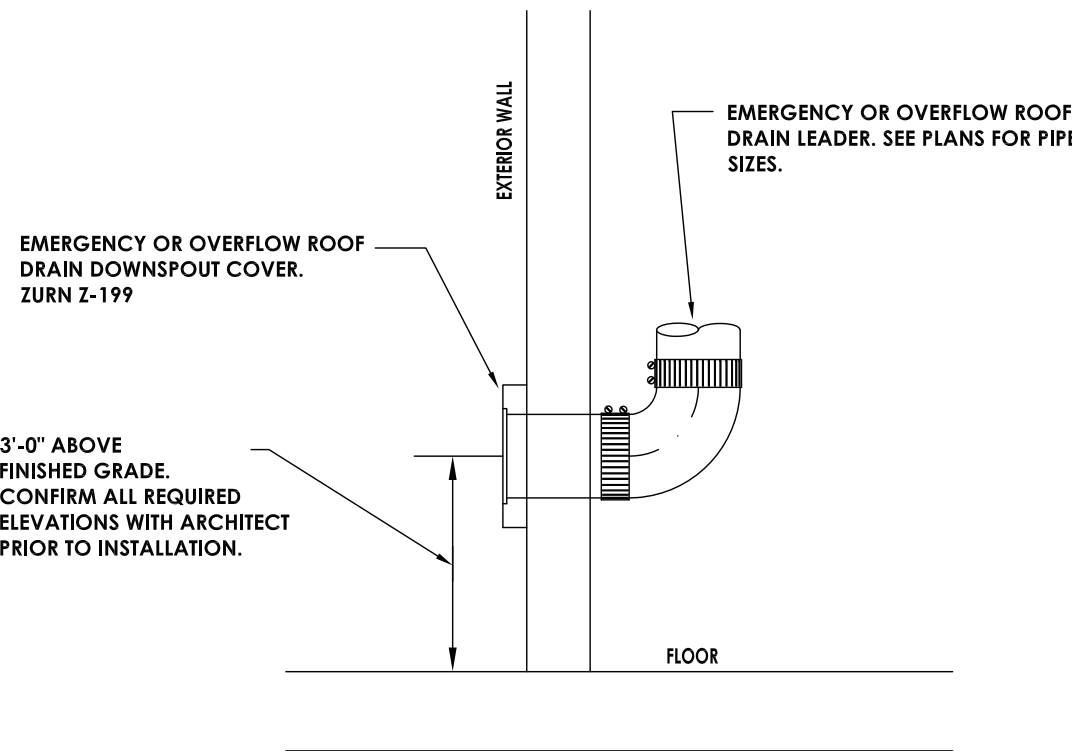
DRAWING NUMBER



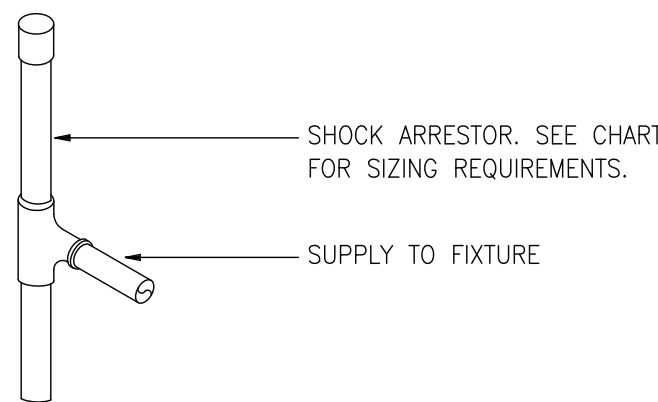
4
P801
3-COMPARTMENT SINK SCHEMATIC
SCALE: NONE



5
P801
HAND SINK MIXING VALVE
SCALE: NONE



6
P801
OVERFLOW ROOF DRAIN DISCHARGE
SCALE: NONE



SHOCK ARRESTOR SCHEDULE		
P.D.I. SIZE	FIXTURE UNITS	MANUFACTURER OR EQUAL
"A"	1 - 11	ZURN, JOSAM, SMITH, PPI, INC.
"B"	12 - 32	"
"C"	33 - 60	"
"D"	61 - 113	"

GOOD PLUMBING PRACTICES REQUIRE INSTALLATION OF SHOCK ARRESTORS THROUGHOUT BUILDING ADDITION AND AREA OF RENOVATION.

7
P801
WATER HAMMER SCHEDULE
SCALE: NONE



TEST REPORT

5001 East Philadelphia Street
Ontario, California - USA 91761-2816
Ph: 909.472.4100 | Fax: 909.472.4243
http://www.iapmoril.org

Report Number: 1757-16008-002
Report Issued: March 3rd, 2016
Client: Schier Products
9500 Woodend Rd.
Edwardsville, KS 66111
Project Number: 26020
Contact: Charlie Ismert

Source of Samples: Samples were manufactured at the client's facility in Edwardsville, KS and witnessed tested by Dale E. Holloway of IAPMO R&T Lab. Samples are manufactured in good condition.

Date of Testing: March 1st, 2016

Sample Description: Grease Interceptor.

Model: **GB-2 (50 gpm)**

Refer to the manufacturer's drawings and installation instructions for more detailed measurements and information.

Scope of Testing: The above grease interceptor was witnessed tested to meet the requirements of ASME A112.14.3-2000 (Reaffirmed 2004) "Grease Interceptors" and CSA B481.1-12 "Testing and rating of grease interceptors using lard".

Conclusion: The "GB-2 (50 gpm)" Grease Interceptor **DID COMPLY** with the requirements of ASME A112.14.3-2000 (Reaffirmed 2004) for "Grease Interceptors" and CSA B481.1-12 "Testing and rating of grease interceptors using lard".

By the signature below, I certify that all the testing and preparation for this report was performed under direct supervision of IAPMO R&T Lab, unless otherwise stated.

Witness tested and reported by,

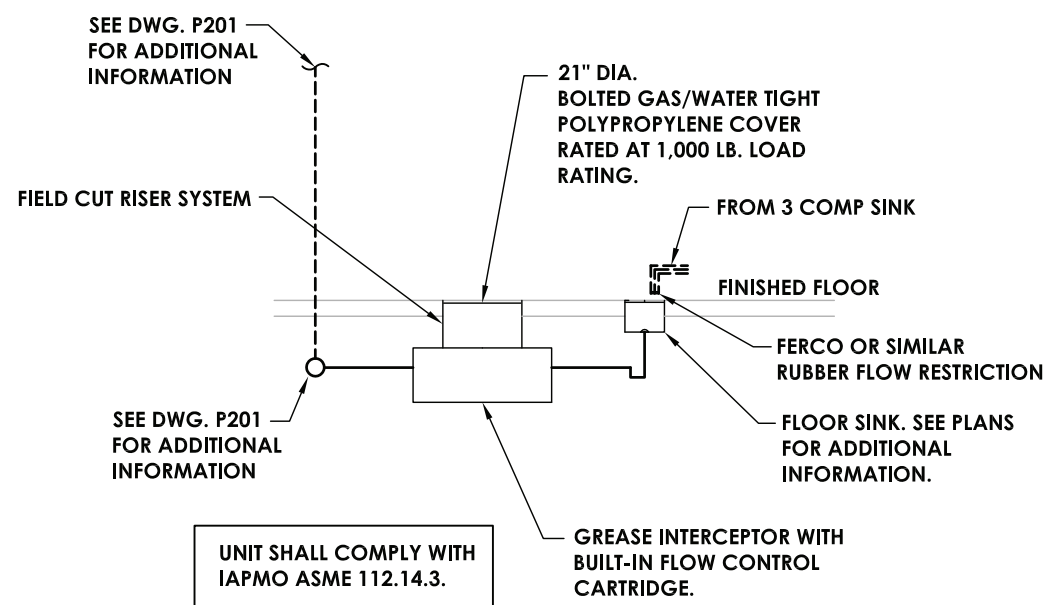
Dale E. Holloway

Dale E. Holloway, Regional Technical Manager
IAPMO R&T Lab

All testing and sample preparation for this report was performed under the continuous, direct supervision of IAPMO R&T Lab, unless otherwise stated. The observations, test results and conclusions in this report apply only to the specific samples tested and are not indicative of the quality or performance of similar or identical products. Only the Client shown above is authorized to copy or distribute the report, and then only in its entirety. Any use of the IAPMO R&T Lab name for the sale or advertisement of the tested material, product or service must first be approved in writing by IAPMO R&T Lab.

Page 1 of 10

1
P801
GREASE INTERCEPTOR APPROVAL TESTING
SCALE: NONE



2
P801
GREASE INTERCEPTOR DIAGRAM
SCALE: NONE

GREASE INTERCEPTOR SIZING						
EQUIP. DESCRIPTION	EQUIP. NUM.	QTY.	PDI GPM	X' x Y' x Z' = C.I. / 231 GAL. X 0.75 = GPM	GPM TOTAL	
3-COMP SINK	1	1	---	20"x28"x18"x3 =10,080/231 x 0.75	98.18	
TOTAL					98.18	
GPM TOTAL FOR 2 MINUTE RETENTION TIME					49.09	
MINIMUM GREASE CAPACITY IN GALLONS					49.09	

3
P801
GREASE INTERCEPTOR PDI SIZING
SCALE: NONE



CPLteam.com
ARCHITECTURE • ENGINEERING • PLANNING

50 FRONT STREET, SUITE 202
NEWBURGH, NEW YORK 12550
TEL (800) 274-9000

REVISIONS	NO.	DATE	BY	DESCRIPTION
	1	3/21/22	RLA	ADDED NO. 3



ELLENVILLECENTRAL SCHOOL DISTRICT
2020 CAPITAL IMPROVEMENT PROJECT
VOLUME 1
ES LIBRARY RELOCATION & CAFETERIA ADDITION
ELLENVILLE ES: SED #62-20-02-06-0-008-010

DATE	DRAWN	CHECKED
05/04/2021	xxx	xxx
SCALE AS NOTED		
SHEET TITLE		
ES CAFETERIA ADDITION PLUMBING DETAILS		

PROJECT NUMBER
14426.04
EES
P801
DRAWING NUMBER