

1

2

3

4

5

A

PLUMBING SPECIALTIES SCHEDULE											
SYMBOL	MANUFACTURER/ MODEL NUMBER	DESCRIPTION	COMPONENTS AND ACCESSORIES	MOUNTING HEIGHT	REMARKS	SYMBOL	MANUFACTURER/ MODEL NUMBER	DESCRIPTION	COMPONENTS AND ACCESSORIES	MOUNTING HEIGHT	REMARKS
CO-1	JR SMITH MODEL # 4420C	CLEANOUT, CAST IRON SPIGOT FERRULE WITH CAST BRONZE TAPER THREAD PLUG	VANDAL PROOF	-	#3	RPBP-1	WATTS 3/4" TO 2" MODEL # LF909-QT-S 2-1/2" TO 6" MODEL # LF909-OSY	REDUCED PRESSURE BACKFLOW PREVENTER, CAST IRON BODY WITH CORROSION RESISTANT INTERNAL PARTS AND SST SPRINGS. LEAD FREE	SHUTOFF VALVES: UP TO 2" - BRONZE BODY BALL VALVES OVER 2" - OS&Y GATE VALVE.	MAXIMUM OF 6" 0" ABOVE FINISHED FLOOR.	#2,3
ET-1	AMTROL MODEL # ST-12C-DD	EXPANSION TANK, STEEL TANK, 3.2 GALLONS ACCEPTANCE VOLUME, POLYPROPYLENE LINER ASME CONSTRUCTED PRECHARGED	-	-	#1	TV-1	WATTS "HYDROGUARD" MODEL # LFSH434	THERMOSTATIC MIXING VALVE, MASTER MIXING VALVE, 1 GPM MINIMUM FLOW, 5 PSIG DROP AT 42 GPM, SET POINT: 120°F	PROVIDE INLET/OUTLET PRESSURE/TEMP GAUGES, BYPASS REGULATION PUMP, CHECK VALVES, PROVIDE WITH HWRP-1	-	#1,3
ECQ-1	JR SMITH MODEL # 4023S-F-C-U-PB	FLOOR CLEANOUT, LIGHT DUTY, CAST IRON BODY, ROUND ADJUSTABLE SCORIATED NICKEL BRONZE TOP, TAPER THREAD, BRONZE PLUG.	FLANGE WITH FLASHING CLAMP, VANDAL PROOF PLUG, PROVIDE CARPET CLAMP FOR CARPETED FLOOR AREAS.	-	#3	WCO-1	JR SMITH MODEL # 4402C-U	WALL CLEANOUT, DUCO CAST IRON, SPIGOT FERRULE CAST BRONZE, THREAD PLUG, STAINLESS STEEL ROUND COVER AND SCREW.	VANDAL PROOF SCREWS.	-	#3,5
ES-1	JR SMITH MODEL # 3150-PDBS-U-13	FLOOR SINK, 8" DEEP RECEPTOR, NICKEL BRONZE RIM, ALUMINUM SEDIMENT BUCKET.	12 1/2" SQUARE NICKEL BRONZE TOP WITH VANDAL PROOF 3/4 GRATE, PROVIDE PROSET TRAP GUARD.	-	#3	WHA-1	PRECISION PLUMBING MODEL # SC-500 THROUGH # SC-2000	WATER HAMMER ARRESTOR, BARREL FABRICATED OF TYPE "X" HARD DRAWN COPPER, WITH EPDM "O" RING SEALS, NORMAL OPERATING PRESSURE 0-80 PSIG.	MACHINED COMPOSITE MATERIAL PISTON AND LOW LEAD BRASS THREADED ADAPTER	-	#4
REMARKS: 1. PROVIDE ISOLATION VALVES AT THE SUPPLY PIPE CONNECTIONS 2. PROVIDE AN AIR GAP FITTING ON THE DRAIN LINE, MOUNT AT A SUFFICIENT HEIGHT TO ALLOW PROPER DRAINAGE. 3. REFER TO FLOOR PLANS FOR SIZES 4. INSTALL SIZES PER LOAD (WSFU) RECOMMENDED BY PDI & MANUFACTURER. 5. PROVIDE WALL CLEANOUT AT BASE OF ALL SANITARY AND STORM STACKS. FURNISH WITH ACCESS DOOR OR COVER											

B

AIR COMPRESSOR SCHEDULE										
SYMBOL	MANUFACTURER/ MODEL NUMBER	TYPE	LOCATION	SERVING	CAPACITY	MAX. PRESSURE (PSIG)	WEIGHT (LBS)	CAPACITY (GALLONS)	ELEC DATA HP-VOLTS-PH	REMARKS
CA-1	BEACON MEDIAES MODEL # LES05-115T-RD-071	OIL LESS	MECH ROOM	MA & MA (SIM 02)	14 SCFM @ 50 PSI	112.4	538 LBS	71	5/208V/3PH	#1,2
REMARKS: 1. ELECTRIC DRIVE 2. COMPLIANT TO OSHA AND UL STANDARDS										

VACUUM PUMP SCHEDULE									
SYMBOL	MANUFACTURER/ MODEL NUMBER	LOCATION	SERVING	NOMINAL PUMPING SPEED	CAPACITY	END PRESSURE (INCH OF HG.V)	WEIGHT (LBS)	ELEC DATA HP-VOLTS-PH	REMARKS
VAC-1	BEACON MEDIAES VLV02S-030V-BSCD-SPL	MECH ROOM	MVAC	28 ACFM	11 SCFM @ 19" Hg	29.3	438 LBS	2/208V/3PH	-

GAS FIRED WATER HEATER SCHEDULE									
SYMBOL	MANUFACTURER/ MODEL NUMBER	TYPE	LOCATION	FUEL TYPE	BTUH INPUT	STORAGE CAP. (GAL)	RECOVERY IN GPH AT 100°F RISE	ELEC. DATA VOLT-PH-AMP	REMARKS
WH-1	AO SMITH MODEL # 8TH-120(A)	S	MECH ROOM	GAS	120,000	60	138	120V-1-15	NOTE #1,2
WH-2	AO SMITH MODEL # 8TH-120(A)	S	MECH ROOM	GAS	120,000	60	138	120V-1-15	NOTE #1,2
NOTE: 1. WATER HEATER SHALL BE PROVIDED WITH A MINIMUM OF 14"W.C. GAS PRESSURE 2. WATER HEATER SHALL BE PROVIDED WITH ELECTRONIC IGNITION 3. STORAGE									

PUMP SCHEDULE									
SYMBOL	MANUFACTURER/ MODEL NUMBER	TYPE	LOCATION	SYSTEM SERVED	CAPACITY	CAPACITY FT OF HEAD	FLUID TEMP (°F)	ELEC. DATA 115 V / 1/8 HP / 1 PHASE	REMARKS
HWRP-1	TACO MODEL # 009	IL	MECHANICAL ROOM	DOMESTIC HW RECIRC	3.5 GPM	23.2	120°F	115 V / 1/8 HP / 1 PHASE	1
NOTES: IL = IN-LINE PUMP REMARKS: 1. PUMP SHALL BE BRONZE FOR DOMESTIC WATER USE									

C

D

E

PLUMBING FIXTURE SCHEDULE											
SYMBOL	MANUFACTURER/ MODEL NUMBER	DESCRIPTION OF FIXTURE	TRIM AND ACCESSORIES	REMARKS	SYMBOL	MANUFACTURER/ MODEL NUMBER	DESCRIPTION OF FIXTURE	TRIM AND ACCESSORIES	REMARKS		
BT-1	AMERICAN STANDARD "STUDIO" MODEL # 2573202	BATH TUB, FLOOR MOUNT, FIBERGLASS, INTEGRAL APRON, 60" X 30" X 18"	PROVIDE MODEL #1553-470 DRAIN AND OVERFLOW, SHOWERHEAD, SHOWER TRIM.	-	S-2	ELKAY MODEL # EW5FAD13620SACC	SCUB SINK, ACCESSIBLE, WALL MOUNT, 16 GAUGE TYPE 304 STAINLESS STEEL, REAR CENTER DRAIN, 33" X 16-1/2" X 6-1/2" BOWL.	PROVIDE MODEL #LKB722C SENSOR FAUCET WITH AC PLUG-IN, MODEL #LKT723 MIXING VALVE, AND MODEL #LKB18B DRAIN.	#2,3,4		
EWG-1	ELKAY MODEL # LZW5-LRP8M2BK	ELECTRIC WATER COOLER, ACCESSIBLE, DOUBLE BOWL, WITH BOTTLE FILLER, PUSH ACTIVATION, WALL MOUNT IN WALL, 8.0 GPM CHILLER CAPACITY, STAINLESS STEEL FINISH.	PROVIDE IN WALL CARRIER, REPLACEMENT WATER FILTERS, MODEL #LKAPR1 CANE APRON AND STAINLESS STEEL ACCESS PANEL.	#3,4	S-3	ELKAY "LUSTERTONE" MODEL # LRAD52255	SINK, ACCESSIBLE, DROP-IN, 18 GAUGE TYPE 304 STAINLESS STEEL, SINGLE CENTER FAUCET HOLE, REAR CENTER DRAIN, 21" X 15-3/4" X 5-1/8" BOWL.	PROVIDE T&S BRASS MODEL #B-0300-VR4-WS SINGLE HOLE DECK MOUNT MANUAL FAUCET, GOOSENECK, VANDAL RESISTANT, 1.5 GPM, PROVIDE MODEL #LKAD35 DRAIN FITTING AND STRAINER.	#2,3,4		
JS-1	FIAT MODEL # MSB2424	JANITORS SINK, MOLDED STONE BASIN, 24"X24"X10", SET INTEGRAL DRAIN BODY.	SEE REMARK #8	#1,4,8	S-4	ELKAY "LUSTERTONE" MODEL # ELJH4D161650	SINK, ACCESSIBLE, UNDERMOUNT, STAINLESS STEEL, 18 GAUGE TYPE 304 STAINLESS STEEL, 16" X 16"W X 4-7/8"D BOWL.	PROVIDE T&S BRASS MODEL #B-0300-VR4-WS SINGLE HOLE DECK MOUNT MANUAL FAUCET, GOOSENECK, VANDAL RESISTANT, 1.5 GPM, PROVIDE MODEL #LKAD35 DRAIN FITTING AND STRAINER.	#2,3,4		
L-1	KOHLER "CAXTON" MODEL # K-2209	LAVATORY, ACCESSIBLE, UNDERMOUNT, VITREOUS CHINA, OVAL BASIN, (3) 4" SPACED FAUCET HOLES.	PROVIDE SLOAN MODEL #ETF-600-S-BOX-BDT- CP-0.50PM-MLM-IR-FCT SENSOR ACTIVATED FAUCET, DECK MOUNT, POLISHED CHROME FINISH, 0.5 GPM VANDAL RESISTANT SPRAY DEVICE, THERMOSTATIC MIXING VALVE SET TO 110°F.	#1,2,3,4,11,13	WC-1	KOHLER "KINGSTON" MODEL # K-4325	WATER CLOSET, STANDARD, WALL HUNG, ELONGATED BOWL, VITREOUS CHINA, 1 1/2" TOP SPUD, 1.28 MAX GPF.	FURNISH WITH SLOAN ROYAL MODEL #S2-R111-1.28 SENSOR FLUSH VALVE, BATTERY POWERED, TOP-SPUD, 1.28 GPF, VACUUM BREAKER, MECHANICAL OVERRIDE, OLSONITE #955S SEAT, WALL SUPPORT JR SMITH SERIES 0200.	#1,3,4,5,12		
L-2	KOHLER "KINGSTON" MODEL # K-2028-4	LAVATORY, ACCESSIBLE, WALL MOUNT, VITREOUS CHINA, OVAL BASIN, OVERFLOW.	PROVIDE SLOAN MODEL #ETF-600-S-BOX-BDT- CP-0.50PM-MLM-IR-FCT SENSOR ACTIVATED FAUCET, DECK MOUNT, POLISHED CHROME FINISH, 0.5 GPM VANDAL RESISTANT SPRAY DEVICE, THERMOSTATIC MIXING VALVE SET TO 110°F, PROVIDE WALL SUPPORT FRAME.	#1,2,3,4,11,13	WC-2	KOHLER "KINGSTON" MODEL # K-4325	WATER CLOSET, STANDARD, WALL HUNG, ELONGATED BOWL, VITREOUS CHINA, 1 1/2" TOP SPUD, 1.28 MAX GPF.	FURNISH WITH SLOAN ROYAL MODEL #S2-R111-1.28 SENSOR FLUSH VALVE, BATTERY POWERED, TOP-SPUD, 1.28 GPF, VACUUM BREAKER, MECHANICAL OVERRIDE, OLSONITE #955S SEAT, WALL SUPPORT JR SMITH SERIES 0200.	#1,4,5,12		
S-1	ELKAY "LUSTERTONE" MODEL # ELJH4D161650	SINK, ACCESSIBLE, UNDERMOUNT, STAINLESS STEEL, 18 GAUGE TYPE 304 STAINLESS STEEL, 16" X 16"W X 4-7/8"D BOWL.	PROVIDE T&S BRASS MODEL #B-0300-VR4-WS SINGLE HOLE DECK MOUNT MANUAL FAUCET, GOOSENECK, VANDAL RESISTANT, 1.5 GPM, PROVIDE MODEL #LKAD35 DRAIN FITTING AND STRAINER.	#2,3,4	WC-3	KOHLER "HIGHLINE" MODEL # K-3999	WATER CLOSET, STANDARD, FLOOR MOUNTED, ELONGATED BOWL, VITREOUS CHINA, TWO PIECE TANK, 1.28 MAX GPF.	TWO PIECE BOWL AND TANK, PROVIDE MODEL #K-5588 TOILET SEAT, PROVIDE PLEXI- GLASS COVER OVER TOILET BOWL.	#1		
REMARKS: 1. COLOR SHALL BE WHITE. 2. PROVIDE TRUEBRO INC. MODEL #102, HAND LAV-GUARD PROTECTOR ON THE HOT, COLD, AND DRAIN PIPING UNDER FIXTURE. 3. FIXTURES AND TRIM AS NOTED SHALL BE "ACCESSIBLE" AND SHALL BE INSTALLED TO ADA / ANSI A117 AND FEDERAL 504 REQUIREMENTS. 4. PROVIDE ISOLATION VALVES AT THE SUPPLY PIPE CONNECTIONS. 5. PROVIDE WATER HAMMER ARRESTORS AT THE PIPE CONNECTIONS, LOCATE IN AN ACCESSIBLE LOCATION. 6. NUMBER NOT USED. 7. NUMBER NOT USED. 8. PROVIDE WITH CHICAGO MODEL #897-CCP SERVICE FAUCET WITH VACUUM BREAKER AND INTEGRAL CHECK VALVES, FIAT MODEL #1453BB STAINLESS STEEL STRAINER, MODEL #1239BB ALUMINUM BUMPER GUARD PLATE, MODEL #MSG-2424 WALL GUARD, MODEL #889-CC MOP HANGER, FOR CALKED LEAD CONNECTION NO LESS THAN 1" DEEP FROM DRAIN TO A 3" WASTE PIPE. 9. FIXTURE U-1 SHALL BE ACCESSIBLE WHERE DESIGNATED BY ARCHITECTURAL DRAWINGS, REFER TO ARCHITECTURAL DRAWINGS FOR MOUNTING HEIGHTS. 10. REFER TO ARCHITECTURAL DRAWINGS FOR FIXTURE MOUNTING HEIGHTS. 11. PROVIDE SYMMONS MODEL #7-225 SERIES THERMOSTATIC MIXING VALVE, OR APPROVED EQUAL, ON WATER SUPPLY TO FIXTURE. SET TEMPERATURE TO 110°F. 12. SENSOR SHALL BE ADJUSTABLE, PROVIDE WITH SOLENOID VALVE, CHROME PLATED WALL PLATE AND SLOAN MODEL #EL-154 TRANSFORMER (120 VAC/24 VAC). 13. FAUCET SHALL BE HARDWIRED, PROVIDE WITH BOX TRANSFORMER.											

PLUMBING FIXTURE CONNECTION SCHEDULE					
FIXTURE TYPE	WASTE CONNECTION	VENT CONNECTION	COLD WATER CONNECTION	HOT WATER CONNECTION	
DRINKING FOUNTAIN	1 1/2"	1 1/2"	1/2"	-	
DRINKING FOUNTAIN (2 BOWL)	1 1/2" (2)	1 1/2" (2)	1/2" (2)	-	
JANITORS MOP BASIN	3"	1 1/2"	1/2"	1/2"	
LAVATORY	1 1/2"	1 1/2"	1/2"	1/2"	
SINK	1 1/2"	1 1/2"	1/2"	1/2"	
URINAL	2"	1 1/2"	3/4"	-	
WATER CLOSET (FLUSH VALVE)	4"	2"	1 1/2"	-	
NOTES: 1. REFER TO ARCHITECTURAL DRAWINGS FOR ALL PLUMBING FIXTURE MOUNTING HEIGHTS. 2. ALL PIPE TRAPS AT SINKS AND LAVATORIES SHALL BE CHROME PLATED BRASS.					

WATER HAMMER ARRESTOR SCHEDULE					
MANUFACTURER/ MODEL NUMBER	SIZE N.P.T.	OVER ALL LENGTH	PRELOADED PSI (AIR)	FIXTURE UNITS	REMARKS
PPP MODEL #SC-500	1/2"	5"	60	1-11	ALL
PPP MODEL #SC-750	3/4"	6"	60	12-32	ALL
PPP MODEL# SC-1000	1"	6 3/4"	60	33-60	ALL
PPP MODEL# SC-1250	1 1/4"	8 3/4"	60	61-113	ALL
PPP MODEL# SC-1500	1 1/2"	10 1/4"	60	114-154	ALL
PPP MODEL# SC-2000	2"	10 7/8"	60	155-330	ALL
NOTES: 1. LOCATE WATER HAMMER ARRESTORS AS CLOSE AS POSSIBLE TO SHOCK SOURCE. 2. INSTALL PER ALL MANUFACTURERS WRITTEN INSTALLATION INSTRUCTIONS. 3. LOCATE IN AN ACCESSIBLE LOCATION, PROVIDE ACCESS AS REQUIRED. 4. FIXTURE UNITS SHALL BE BASED ON THE LATEST ADOPTED VERSION OF THE INTERNATIONAL PLUMBING CODE. 5. WATER HAMMER ARRESTORS SHALL BE PROVIDED WHERE QUICK-CLOSING VALVES ARE UTILIZED. 6. PROVIDE WATER HAMMER ARRESTORS AT CLOTHES WASHING MACHINES 7. PROVIDE WATER HAMMER ARRESTORS PER GROUP OF WATER CLOSETS AND PER GROUP OF URINALS, WHERE GROUP DOES NOT EXIST PROVIDE WATER HAMMER ARRESTOR AT SINGLE WATER CLOSET.					



S / L / A / M Architects, Landscape Architects & Engineers, P.C.

80 Glastonbury Boulevard
Glastonbury, CT 06033-4410
Phone: 860 657.8077

www.slamcoll.com

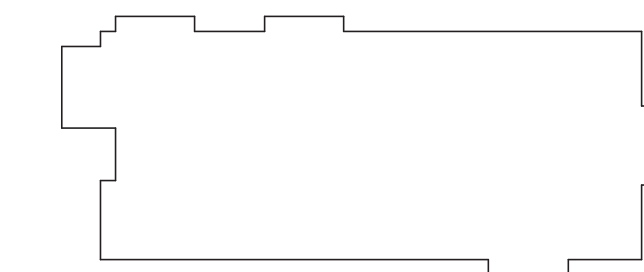
Drawn	JCC
Checked	EMG



NEW YORK
PRESBYTERIAN

IONA SCHOOL OF
HEALTH SCIENCES

171 White Plains Rd,
Bronxville, NY 10708



Number	Date	Issued For

PLUMBING SCHEDULES AND
DIAGRAMS

Date	04/07/2022	Drawing Number	
Scale	1/8" = 1'-0"		P600
Proj. Number	20287.10		