

| LEGEND | |
|--------|--|
| SYMBOL | DESCRIPTION |
| | PIPING UP |
| | PIPING DOWN |
| | PIPING RISE OR DROP |
| | BRANCH-TOP CONNECTION |
| | BRANCH-BOTTOM CONNECTION |
| | REDUCER |
| | CLEANOUT |
| | FLOOR CLEANOUT |
| | CAPPED PIPE |
| | METER |
| | FLOOR DRAIN |
| | AQUASTAT |
| | PUMP |
| | STRAINER |
| | UNION |
| | THERMOSTATIC MIXING VALVE |
| | BALANCING VALVE (BLV) |
| | GLOBE VALVE (GLV) |
| | CHECK VALVE (CV) |
| | GAS COCK, GAS STOP |
| | BALL VALVE (BV) |
| | BUTTERFLY VALVE (BFV) |
| | SOLENOID VALVE |
| | PRESSURE-REDUCING VALVE (PRV) |
| | GATE VALVE (GV) |
| | PRESSURE-RELIEF VALVE (RV) |
| | BACKFLOW PREVENTER |
| | FROST FREE HOSE BIBB |
| | HOSE BIBB |
| | RECESSED-BOX HOSE BIBB OR WALL HYDRANT |
| | EXPANSION JOINT |
| | WATER HAMMER ARRESTER |
| | VALVE IN RISER |
| | WALL CLEANOUT (WCO) |
| | PITCH DOWN OR UP IN DIRECTION OF ARROW |
| | FLOW IN DIRECTION OF ARROW |
| | COLD WATER (CW) |
| | TEMPERED WATER (TW) |
| | HOT WATER (HW) |
| | TEMPERED WATER RETURN (TWR) |
| | HOT WATER RETURN (HWR) |
| | WASTE PIPING (W,S,OW) |
| | BELOW SLAB WASTE PIPING |
| | VENT PIPING (V) |
| | GAS PIPING (G) |
| | PIPING / EQUIPMENT TO BE REMOVED |
| | POINT OF CONNECTION |
| | POINT OF DISCONNECTION |

| ABBREVIATIONS | |
|-----------------|-----------------------------------|
| AFF | ABOVE FINISHED FLOOR |
| BTU | BRITISH THERMAL UNIT |
| BTUH | BTU PER HOUR |
| CLG | CEILING |
| CO | CLEAN OUT |
| CODP | CLEAN OUT DECK PLATE |
| COWP | CLEAN OUT WALL PLATE |
| CW | COLD WATER |
| (D) | DEMOLISH |
| DCV | DOUBLE CHECK VALVE DEVICE |
| DEG. F | ° FAHRENHEIT |
| DIA | DIAMETER |
| DN | DOWN |
| (E) | EXISTING |
| EA | EACH |
| FAI | FRESH AIR INTAKE |
| FD | FLOOR DRAIN |
| G | GAS |
| 'GC' | GENERAL CONSTRUCTION CONTRACTOR |
| GPM | GALLONS PER MINUTE |
| GPH | GALLONS PER HOUR |
| 'H' | HVAC CONTRACTOR |
| HP | HORSEPOWER |
| HW | HOT WATER |
| HWR | HOT WATER RETURN |
| IN. | INCHES |
| IN. W.C. (W.G.) | INCHES WATER COLUMN (WATER GAUGE) |
| KW | KILOWATTS |
| LBS | POUNDS |
| M | METER |
| MAX | MAXIMUM |
| MIN | MINIMUM |
| NTS | NOT TO SCALE |
| OD | OUTER DIAMETER |
| (P) | PROPOSED |
| 'P' | PLUMBING CONTRACTOR |
| PD | PRESSURE DROP |
| RD | ROOF DRAIN |
| RPM | REVOLUTIONS PER MINUTE |
| RPZ | REDUCED PRESSURE ZONE |
| SAN / S | SANITARY |
| ST | STORM DRAIN |
| TEMP | TEMPERATURE |
| TYP | TYPICAL |
| TW | TEMPERED WATER (110°F) |
| TWR | TEMPERED WATER RETURN |
| V | VENT |
| VTR | VENT THROUGH ROOF |
| W | WASTE |

| GENERAL PLUMBING NOTES | |
|------------------------|--|
| 1. | PROVIDE ALL MATERIALS AND EQUIPMENT AND PERFORM ALL LABOR REQUIRED TO INSTALL COMPLETE AND OPERABLE PLUMBING SYSTEMS AS INDICATED ON THE DRAWINGS, AS SPECIFIED AND AS REQUIRED BY CODE. |
| 2. | THE CONTRACTOR, BY PRESENTING THEIR BID FOR THE WORK, REPRESENTS THAT HE/SHE HAS INSPECTED THE SITE AND IS COMPLETELY FAMILIAR WITH THE SCOPE OF WORK AND ALL FIELD CONDITIONS RELATED TO, AND AFFECTING THE WORK AND ITS PERFORMANCE. EXCEPTIONS AFFECTING THE WORK AND ITS PERFORMANCE, OR CONFLICTS BETWEEN FIELD CONDITIONS, SHALL BE BROUGHT TO THE ATTENTION OF THE ARCHITECT PRIOR TO THE SUBMISSION OF BIDS. |
| 3. | PERFORM ALL WORK IN ACCORDANCE WITH THE 2020 NEW YORK STATE PLUMBING (NYSPC), FIRE (NYSFC), MECHANICAL (NYSMC), ENERGY CONSERVATION CONSTRUCTION (NYSECC), AND FUEL GAS (NYSFGC) CODE AND THE REQUIREMENTS OF THE LOCAL AUTHORITIES HAVING JURISDICTION. |
| 4. | COMPLY WITH THE NATIONAL ELECTRIC CODE AND THE REQUIREMENTS OF DIVISION 26 FOR ALL ELECTRICAL INSTALLATIONS. |
| 5. | APPLY FOR AND SECURE ALL REQUIRED PERMITS AND INSPECTIONS AND PAY ALL COSTS FOR THE SAME. |
| 6. | FIRE STOP ALL OPENINGS IN FIRE RATED CONSTRUCTION FOR PIPING, CONDUIT, ETC. |
| 7. | DO NOT SCALE DRAWINGS. DRAWINGS FOR PLUMBING WORK ARE DIAGRAMMATIC AND ARE INTENDED TO CONVEY SCOPE AND GENERAL ARRANGEMENT ONLY. THE LOCATIONS OF ALL ITEMS SHOWN ON THE DRAWINGS OR CALLED FOR IN THE SPECIFICATIONS THAT ARE NOT DEFINITELY FIXED BY DIMENSIONS ARE APPROXIMATE. |
| 8. | COORDINATE CONTRACT DOCUMENTS PROJECT REQUIREMENTS, WORK OF OTHERS, AND EQUIPMENT AND MATERIALS PURCHASED WITH FIELD DIMENSIONS. MANUFACTURERS REQUIREMENTS FOR INSTALLATION, OPERATION, AND MAINTENANCE. CONTRACTORS INTENDED MEANS AND METHODS OF INSTALLATION AND CONTRACTORS FABRICATED ITEMS TO ENSURE A PROPER 'FIT' AND INSTALLATION. BRING ANY CONFLICTS TO THE ATTENTION OF THE ARCHITECT/ENGINEER DURING THE SUBMITTAL PHASE FOR RESOLUTION PRIOR TO PURCHASING ANY EQUIPMENT. |
| 9. | MAINTAIN MAXIMUM HEADROOM AND SPACE CONDITIONS AT ALL POINTS, WHERE HEADROOM AND SPACE CONDITIONS APPEAR INADEQUATE. NOTIFY THE ARCHITECT/ENGINEER PRIOR TO PROCEEDING WITH INSTALLATION. MAINTAIN A MINIMUM OF 8'-0" CLEARANCE FROM FINISHED FLOOR TO UNDERSIDE OF PIPES, CONDUITS, SUSPENDED EQUIPMENT, ETC., THROUGHOUT ACCESS ROUTES IN MECHANICAL ROOMS. |
| 10. | FIELD VERIFY AND COORDINATE ALL PIPING DIMENSIONS BEFORE FABRICATION. MAKE MODIFICATIONS IN THE LAYOUT AS NEEDED TO PREVENT CONFLICT WITH WORK OF OTHER TRADES OR FOR PROPER EXECUTION OF THE WORK. OBTAIN THE APPROVAL OF THE ARCHITECT/ENGINEER FOR MODIFICATIONS. |
| 11. | PROVIDE PRODUCTS OF ONE MANUFACTURER WHERE TWO OR MORE ITEMS OF THE SAME TYPE OF MATERIAL OR EQUIPMENT IS REQUIRED. |
| 12. | INSTALL ALL EQUIPMENT AND APPURTENANCES IN ACCORDANCE WITH MANUFACTURER'S RECOMMENDATIONS, CONTRACT DOCUMENTS, AND APPLICABLE CODES AND REGULATIONS. REFER TO DETAILS FOR ADDITIONAL PIPING AND EQUIPMENT INSTALLATION REQUIREMENTS. |
| 13. | LOCATE ALL TEMPERATURE, PRESSURE, AND FLOW MEASURING DEVICES IN ACCESSIBLE LOCATIONS WITH STRAIGHT SECTION OF PIPE UP, AND DOWNSTREAM AS RECOMMENDED BY THE MANUFACTURER TO ENSURE MANUFACTURER CERTIFIED ACCURACY. |
| 14. | COORDINATE ALL EQUIPMENT CONNECTIONS WITH MANUFACTURER'S CERTIFIED DRAWINGS. COORDINATE AND PROVIDE ALL PIPING TRANSITIONS REQUIRED FOR FINAL CONNECTIONS TO EQUIPMENT. |
| 15. | COORDINATE LOCATIONS AND SIZES OF ALL FLOOR, WALL, AND ROOF OPENINGS WITH ALL OTHER TRADES. COORDINATE ALL PIPING AND EQUIPMENT SUPPORTED FROM STRUCTURE WITH GENERAL CONSTRUCTION WORK. |
| 16. | COMPLETE ALL PRESSURE TESTS BEFORE ANY PLUMBING EQUIPMENT, OR PIPING INSULATION IS APPLIED. |
| 17. | MAKE ALL ATTACHMENTS TO JOISTS, TRUSSES, OR JOIST GIRDERS AT PANEL POINTS. PROVIDE BEAM CLAMPS MEETING MSS STANDARDS. THE USE OF C-CLAMPS IS NOT PERMITTED. |
| 18. | PROVIDE CONCRETE PADS A MINIMUM OF 4 INCHES HIGH FOR ALL FLOOR MOUNTED EQUIPMENT. EXTEND PAD 4 INCHES BEYOND THE EQUIPMENT ON ALL SIDES. |
| 19. | INSTALL PIPING, AND CONDUIT CONCEALED IN AREAS HAVING HUNG CEILINGS AND/OR FURRED SPACES UNLESS OTHERWISE INDICATED ON THE DRAWINGS. |
| 20. | REFER TO ARCHITECTURAL DRAWINGS FOR EXACT LOCATION OF ALL ACCESSIBLE FIXTURES. MOUNT ALL SUCH FIXTURES IN ACCORDANCE WITH THE REQUIREMENTS OF THE AUTHORITY HAVING JURISDICTION. |
| 21. | PROVIDE ACCESS DOORS IN WALLS, PARTITIONS, AND CEILINGS AS REQUIRED TO MAKE VALVES, WATER HAMMER ARRESTERS, ETC. READILY ACCESSIBLE. |
| 22. | ARRANGE FOR, COORDINATE, AND MAKE CONNECTION TO ALL SERVICES PROVIDED BY OTHERS. CONFORM TO ALL REQUIREMENTS APPLICABLE TO CONNECTIONS IMPOSED BY UTILITY COMPANIES AND AUTHORITIES HAVING JURISDICTION. |
| 23. | INSTALL FIXTURES AND EQUIPMENT WITH VALVES, UNIONS, ETC. TO ALLOW FOR EASE OF SERVICE AND/OR REMOVAL. |
| 24. | CORE DRILL ALL PENETRATIONS THROUGH CONCRETE FLOORS, WALLS, AND FOOTINGS. |
| 25. | INSTALL LINK SEAL TYPE PROTECTION FOR WATER RESISTANT SEALS AT ALL SLAB AND BELOW GROUND WALL FOOTING PENETRATIONS. |
| 26. | PROVIDE A CLEANOUT AT THE BASE OF WASTE AND VENT STACKS WITH FINISHED WALL PLATE IN FINISHED WALLS. |
| 27. | FURNISH AND INSTALL WATER PRESSURE REDUCING VALVE AND PRESSURE RELIEF VALVE IN ACCORDANCE WITH THE NEW YORK STATE PLUMBING CODE ON ALL INCOMING DOMESTIC WATER SYSTEMS IN EXCESS OF 80 P.S.I.G. |
| 28. | COVER ALL COPPER PIPING BELOW SLAB WITH 'ARMAFLEX' TYPE INSULATION. |
| 29. | SLOPE ALL VENT PIPING TO DRAIN BACK TO THE DRAINAGE SYSTEM. |
| 30. | FLUSH AND DISINFECT ALL DOMESTIC POTABLE WATER PIPING AND TEST THE WATER IN ACCORDANCE WITH THE INTERNATIONAL PLUMBING CODE. PROVIDE CERTIFICATE OF PERFORMANCE AND LABORATORY TEST REPORT TO LOCAL AUTHORITIES HAVING JURISDICTION AND OBTAIN THEIR APPROVAL. |
| 31. | PROVIDE WATER HAMMER ARRESTORS AT ALL QUICK CLOSING FIXTURE VALVE LOCATIONS. |
| 32. | ALL PIPING, VALVES AND FITTINGS USED FOR POTABLE WATER SHALL BE NSF 61/372 COMPLIANT AND BE TESTED FOR LOW LEAD. |
| 33. | ANY PENETRATIONS THROUGH AIR BARRIER SHALL BE SEALED AS PER 2020 NYSECC RESIDENTIAL AND COMMERCIAL PROVISIONS. |
| 34. | ALL PIPING IN PLENUM SPACES SHALL BE CAST IRON FOR SANITARY, STORM, VENT SYSTEMS, AND COPPER PIPING FOR DOMESTIC SYSTEMS, AND STEEL PIPING FOR GAS SYSTEMS. NO PLASTIC PIPING ALLOWED. |

PLUMBING NOTES

1. ALL FAUCETS, FITTINGS, AND VALVES MUST COMPLY WITH NSF 61 AND ANSI / NSF 372 FOR LOW LEAD PERCENTAGE
2. CONTRACTOR SHALL BE RESPONSIBLE TO DEMONSTRATE COMPLIANCE WITH THE NYS DEPARTMENT OF HEALTH LEAD IN WATER REGULATION (10 NYCRR 67-4).
3. AT THE CONCLUSION OF NEW PLUMBING WORK, THE CONTRACTOR SHALL BE RESPONSIBLE TO PROVIDE THE SERVICES OF A THIRD PARTY NYS LICENSED ENVIRONMENTAL TESTING LABORATORY TO PROVIDE LEAD TESTING AT ALL NEW LAVATORIES, SINKS, DRINKING FOUNTAINS AND ALL OTHER FIXTURES WHERE WATER MAY BE CONSUMED FOR DRINKING. TWO COPIES OF THE REPORT MUST BE SUBMITTED, ONE COPY TO THE ENGINEER AND THE OTHER ONE TO THE OWNER.

DEMOLITION NOTES

GENERAL

1. PRIOR TO PROPOSAL SUBMISSION, THIS CONTRACTOR SHALL VISIT THE SITE TO REVIEW THE EXISTING CONDITIONS ASSOCIATED WITH THE SCOPE OF WORK AND ADJACENT AREAS TO ASCERTAIN THE DIFFICULTIES WHICH WILL AFFECT THE EXECUTION OF THE WORK OF THIS CONTRACT.
2. SUBMISSION OF A PROPOSAL WILL BE CONSTRUED AS EVIDENCE THAT THE ABOVE SITE EXAMINATION HAS BEEN MADE AND LATER CLAIMS WILL NOT BE RECOGNIZED FOR EXTRA LABOR, EQUIPMENT OR MATERIALS REQUIRED BECAUSE OF DIFFICULTIES ENCOUNTERED WHICH COULD HAVE BEEN FORESEEN HAD SUCH AN EXAMINATION BEEN MADE.
3. ALL DEMOLITION WORK SHALL BE IN COMPLIANCE WITH ALL FEDERAL AND NEW YORK STATE APPLICABLE BUILDING AND LIFE AND SAFETY REGULATIONS.

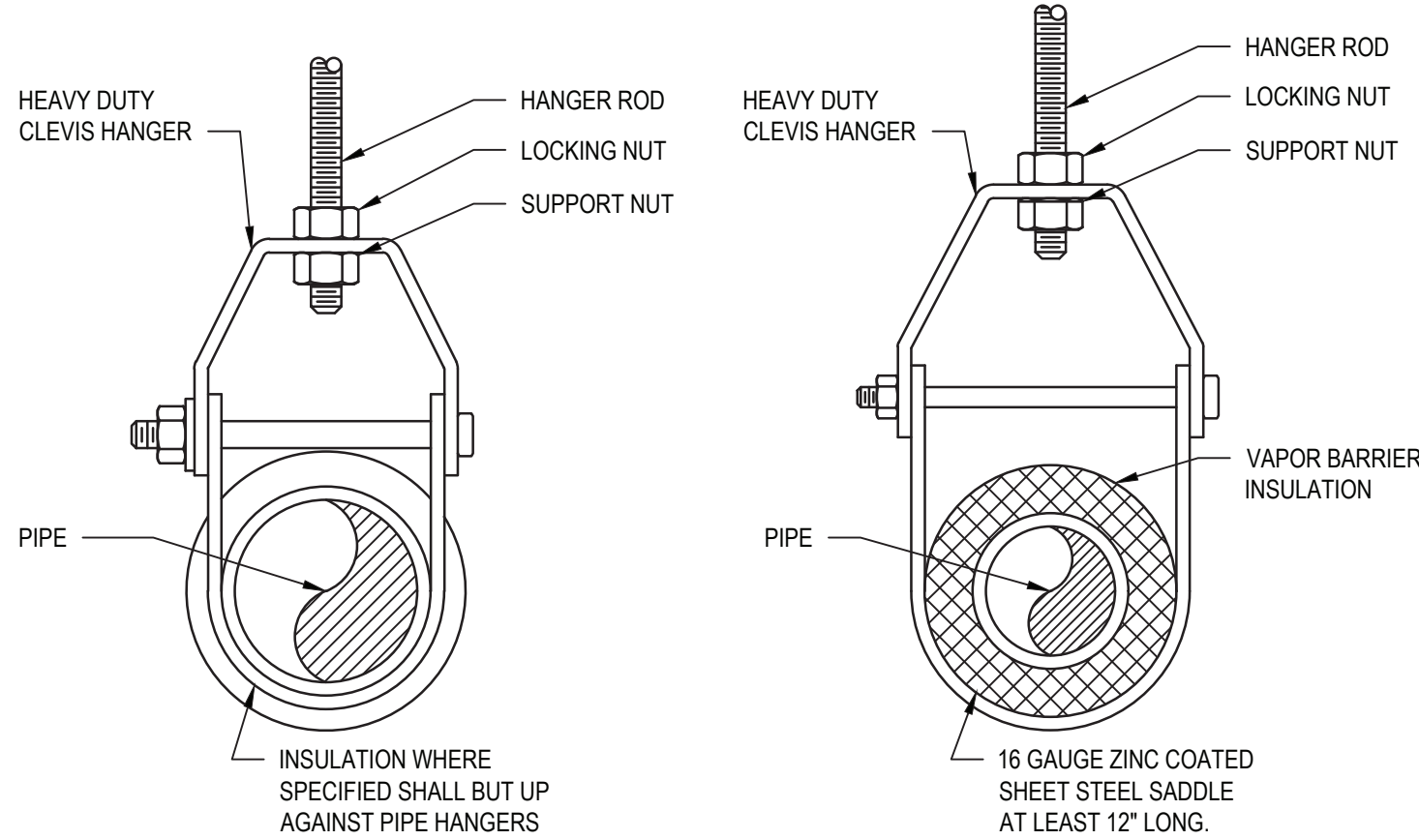
SCOPE OF WORK

1. DEMOLITION WORK SHALL INCLUDE ALL MATERIALS, LABOR, EXTENSIONS, CONNECTIONS, CUTTING, REPAIRING, ADAPTING AND OTHER PLUMBING WORK REQUIRED TO MAINTAIN SERVICE PENDING THE COMPLETION OF THE PERMANENT WORK. COORDINATE THE EXTENT OF DEMOLITION WORK WITH THE ARCHITECT AND BUILDING MANAGEMENT.
2. THE CONTRACTOR SHALL REMOVE AND DISPOSE OF ALL CONSTRUCTION DEBRIS AND UNWANTED MATERIAL OFF SITE IN ACCORDANCE WITH CONTRACT SPECIFICATIONS.
3. THE CONTRACTOR SHALL TAKE CARE NOT TO DAMAGE ADJOINING SURFACES OUTSIDE THE CONTRACT AREA OR SCOPE OF WORK. THE CONTRACTOR SHALL BE RESPONSIBLE TO RESTORE TO EXISTING CONDITIONS SURFACE DAMAGED DURING CONSTRUCTION INCLUDING PATCHING AND PAINTING AS REQUIRED AND DEEMED NECESSARY BY THE ARCHITECT.
4. ALL EXISTING WORK REQUIRED TO REMAIN BUT INTERFERING WITH PROPOSED NEW PLUMBING (AS WELL AS ELECTRICAL, MECHANICAL AND GENERAL CONSTRUCTION WORK) SHALL BE RELOCATED AND RECONNECTED USING MATERIALS CONFORMING TO STANDARDS OF THIS CONTRACT.
5. REMOVE ALL FIXTURES AS NOTED ON THE ARCHITECTURAL PLANS. PROVIDE TEMPORARY CAPS FOR HOT, COLD AND SANITARY CONNECTIONS DURING NEW CONSTRUCTION.
6. REMOVE BASE BUILDING PIPING AS INDICATED BELOW:
 - 6.1. REMOVE ALL ABANDONED BASE BUILDING PIPING BACK TO THE EXISTING WET COLUMNS OR SHAFTS, OR AS NOTED ON DRAWINGS.
 - 6.2. THE CONTRACTOR TO COORDINATE BUILDING MANAGEMENT AND TENANT REGARDING REMOVAL SCOPE OF WORK TO MAINTAIN CONTINUITY OF ALL SERVICES TO ALL TENANTS WHO ARE TO REMAIN OPERATIONAL AND NOT BE AFFECTED BY DEMOLITION WORK.
 - 6.3. ALL EXISTING BUILDING VALVES FOR DOMESTIC WATER MAINS AT SHAFTS ARE TO REMAIN.
7. PROVIDE ADDITIONAL SUPPORT FOR ALL EXISTING PIPING TO REMAIN WHICH ARE AFFECTED BY DEMOLITION OF EXISTING CEILING AND PARTITIONS.
8. COORDINATE WITH OWNER TO DETERMINE WHETHER REMOVED EQUIPMENT IS TO BE TURNED OVER TO THE OWNER.

| PLUMBING FIXTURES | | | | | | | | | |
|---|--|-------------------------------|----|-----------|----|-------|-----|-------|--|
| FIXTURE NO. | DESCRIPTION | MINIMUM CONNECTION SIZES (IN) | | | | | | | |
| | | COLD WATER | | HOT WATER | | DRAIN | | V | |
| | | SIZE | FU | SIZE | FU | SIZE | DFU | | |
| SK-1 | SINK - LAY IN - ELKAY MODEL LRADO172060 - ADA COMPLIANT - 6" DEEP BOWL, STAINLESS STEEL, 20"x17" - FAUCET - ELKAY MODEL LK406GN05L2 - ADA COMPLIANT GOOSENECK, CHROME, 4" CENTER SET, 2" LEVER HANDLES | 1/2 | 1 | 1/2 | 1 | 1-1/2 | 2 | 1-1/2 | |
| NOTES: | | | | | | | | | |
| 1. CHROME PLATE ALL DRAIN PIPE, FITTINGS, P-TRAPS AND SUPPLY LINES THAT ARE EXPOSED, LOCATED WITHIN VANITIES OR ACCESSIBLE CABINETS OR BEHIND WATER CLOSETS | | | | | | | | | |
| 2. MINIMUM CONNECTION SIZES INDICATED ARE EQUIPMENT CONNECTION SIZES OR CODE MINIMUM SIZES, SEE PLANS AND DIAGRAMS FOR ACTUAL SIZES REQUIRED | | | | | | | | | |
| 3. ALL FLOOR DRAINS SHALL HAVE TRAP PRIMER CONNECTION AND BE CONNECTED TO NEAREST PLUMBING FIXTURE. | | | | | | | | | |
| 4. INSULATE EXPOSED DRAIN AND SUPPLY PIPING FOR HANDICAPPED FIXTURES WITH TRUEBRO LAV GUARD. | | | | | | | | | |

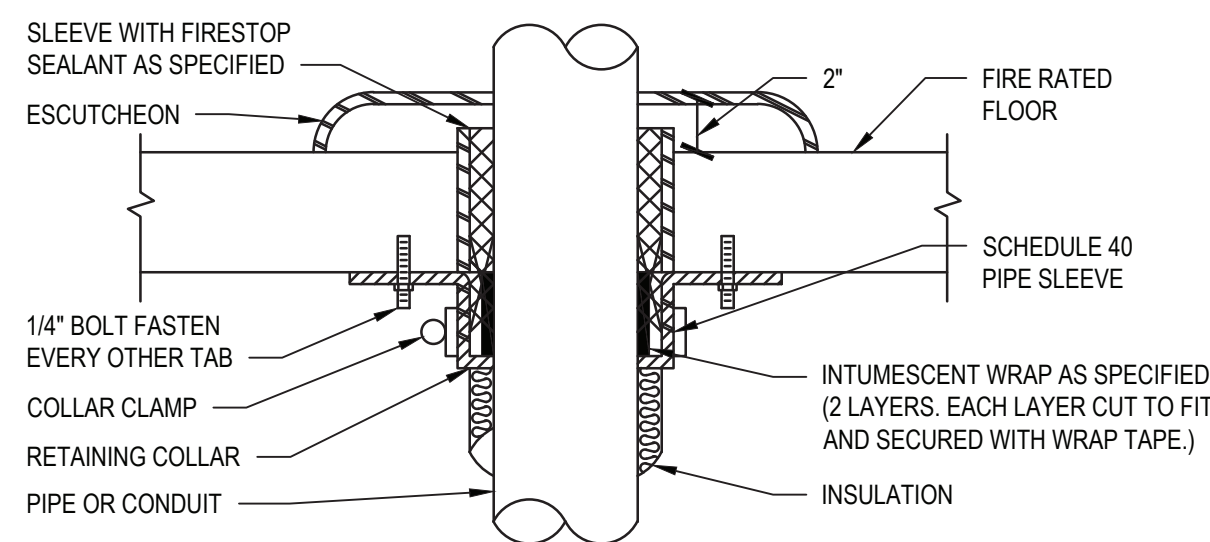
| HANGER SPACING | | |
|---|----------------------|--------------------|
| PIPING MATERIAL | MAX. HORIZONTAL (FT) | MAX. VERTICAL (FT) |
| ABS PIPE | 4 | 10 |
| ALUMINUM TUBING | 10 | 15 |
| BRASS PIPE | 10 | 10 |
| CAST-IRON PIPE | 5 | 15 |
| COPPER OR COPPER ALLOY PIPE | 12 | 10 |
| COPPER OR COPPER ALLOY PIPE 1½"Ø OR SMALLER | 6 | 10 |
| COPPER OR COPPER ALLOY PIPE 1½"Ø OR LARGER | 10 | 10 |
| PEX | 2.67 | 10 |
| CPVC 1" OR SMALLER | 3 | 10 |
| CPVC 1-1¼" OR LARGER | 4 | 10 |
| STEEL PIPE | 12 | 15 |
| POLYETHYLENE /ALUMINUM POLYETHYLENE | 2.67 | 4 |
| PVC PIPE | 4 | 10 |
| STAINLESS STEEL DRAINAGE | 10 | 10 |

| HANGER ROD SCHEDULE | | | |
|---------------------|-----------|------------|-----------|
| PIPE SIZE | ROD SIZE | PIPE SIZE | ROD SIZE |
| UP TO 2" | 3/8" DIA. | 4" THRU 5" | 5/8" DIA. |
| 2 1/2" THRU 3" | 1/2" DIA | | |




1 Pipe Hanger Detail

SCALE: NTS



Pipe Penetration Through Floors Detail

SCALE: NTS




architects
+
engineers

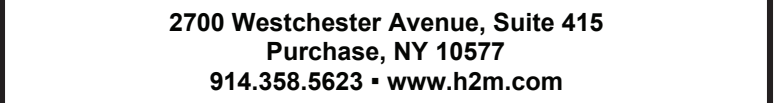
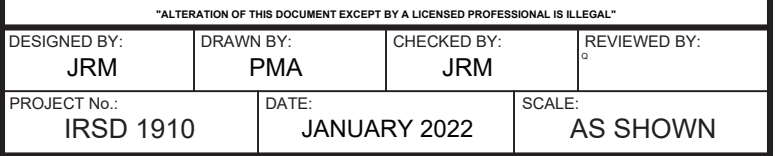
2700 Westchester Avenue, Suite 415
Purchase, NY 10577
914.358.5625 • www.h2m.com

CONSULTANTS:

[illegible]

The image shows the official seal of the State of New York Professional Engineers. The seal is circular with a double border. The outer border contains the text "STATE OF NEW YORK" at the top and "PROFESSIONAL ENGINEERS" at the bottom, separated by two stars. Inside this is a smaller circle with the text "NORMAN RICHARD MUNKIN" at the top and "LICENSE NO. 098440-1" at the bottom. In the center of the seal is a crest featuring a shield with a plow, a sheaf of wheat, and a sun, with the words "ENGINEERING" and "CONSTRUCTION" on either side. A large, bold, black signature, "NORMAN RICHARD MUNKIN", is written across the seal, crossing over the license number and the central crest.

| | |
|--|--|
| <div>CLIENT</div> <div><h1>Irvington Union Free School District</h1><h2>Main Street School Renovations</h2><div><p>101 Main Street Irvington, NY 10533</p><p>SED Number:66-04-02-02-0-001-016</p></div></div> | |
| <div>CONTRACT</div> <div><h3>CONTRACT P</h3><h3>PLUMBING CONTRACT</h3></div> | |
| <div>SHEET TITLE</div> <div><h3>GENERAL NOTES, LEGENDS AND ABBREVIATIONS</h3></div> | |
| <div>DRAWING NO.</div> <div><h1>P0.0</h1></div> | |

[illegible]

SED Number:66-04-02-02-0-001-016

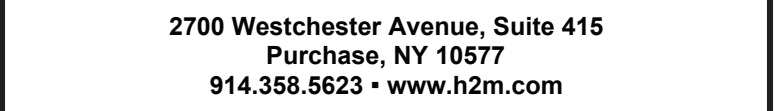
P1.0



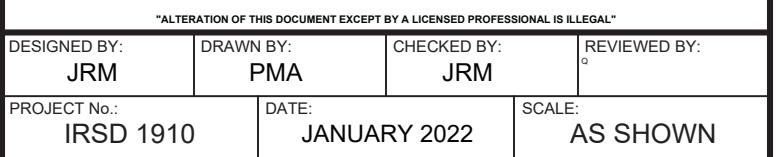
\\URSD\livington UFSD\IRSD 1910 (Main St. School Renovations)\02-BIM-CADD\plumb\PI.0 - Plumbing Basement Plan.dwg Last Modified: Apr 13, 2021 - 10:37am Plotted on: Nov 11, 2021 - 4:52pm By pangalone

1. DISCONNECT AND REMOVE 5" SANITARY RISER IN CHASE WALL. RECONNECT NEW 5" SANITARY RISER TO EXISTING BRANCH PIPING. CONTRACTORS SHALL OPEN UP EXISTING CHASE WALL TO ACCESS RISER PIPING AND TO PATCH AND REPAIR TO MATCH EXISTING FINISHES.

1. DISCONNECT AND REMOVE 5" SANITARY RISER IN CHASE WALL. RECONNECT NEW 5" SANITARY RISER TO EXISTING BRANCH PIPING. CONTRACTORS SHALL OPEN UP EXISTING CHASE WALL TO ACCESS RISER PIPING AND TO PATCH AND REPAIR TO MATCH EXISTING FINISHES.



CONSULTANTS:

[illegible]

Main Street School Renovations



SED Number:66-04-02-02-0-001-016

| | |
|----------|--|
| CONTRACT | <h2 style="margin: 0;">CONTRACT P</h2> <h3 style="margin: 0;">PLUMBING CONTRACT</h3> |
|----------|--|

STATUS **FINAL REBID DOCUMENT**

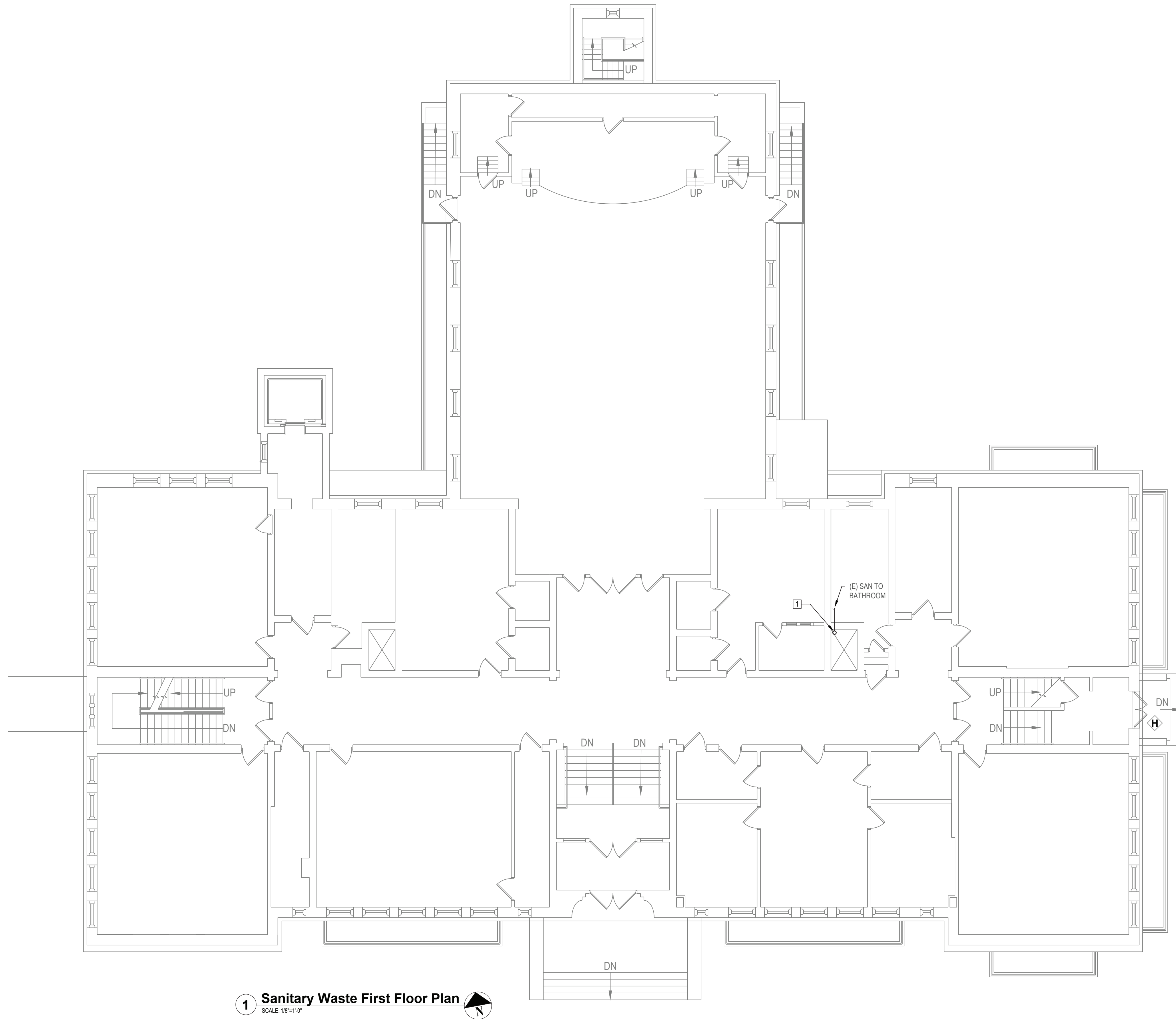
SHEET TITLE

**SANITARY WASTE
GROUND FLOOR PLAN**

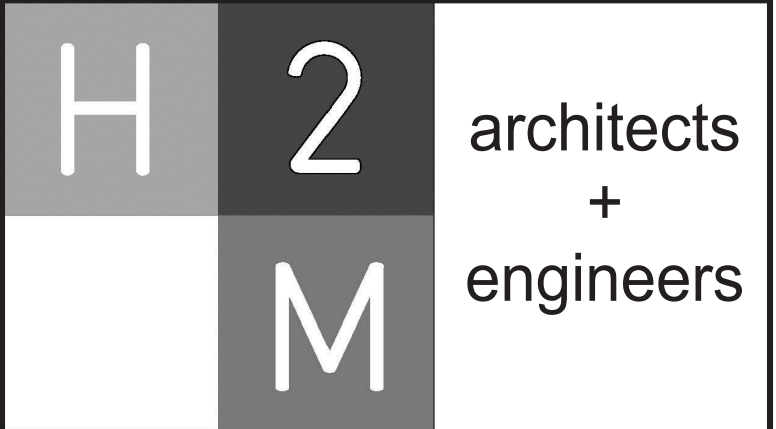
| | |
|-------------|-------------|
| DRAWING No. | P1.1 |
|-------------|-------------|

1. DISCONNECT AND REMOVE 5" SANITARY RISER IN CHASE WALL. RECONNECT NEW 5" SANITARY RISER TO EXISTING BRANCH PIPING. CONTRACTORS SHALL OPEN UP EXISTING CHASE WALL TO ACCESS RISER PIPING AND TO PATCH AND REPAIR TO MATCH EXISTING FINISHES.

1. DISCONNECT AND REMOVE 5" SANITARY RISER IN CHASE WALL. RECONNECT NEW 5" SANITARY RISER TO EXISTING BRANCH PIPING. CONTRACTORS SHALL OPEN UP EXISTING CHASE WALL TO ACCESS RISER PIPING AND TO PATCH AND REPAIR TO MATCH EXISTING FINISHES.



1 Sanitary Waste First Floor Plan
SCALE: 1/8"=1'-0"



**2700 Westchester Avenue, Suite 415
Purchase, NY 10577
914.358.5623 • www.h2m.com**

CONSULTANTS:

[illegible]

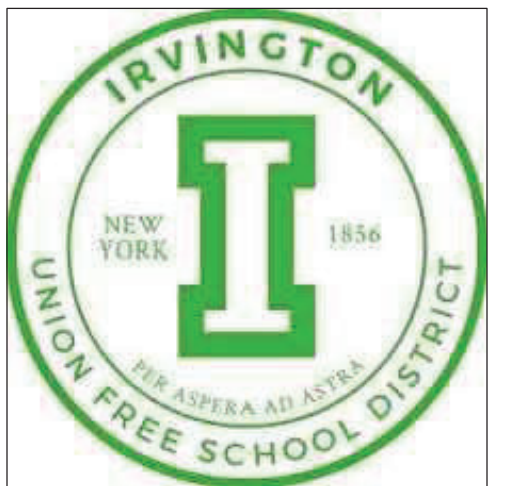
"ALTERATION OF THIS DOCUMENT EXCEPT BY A LICENSED PROFESSIONAL IS ILLEGAL"

| | | | |
|----------------------------------|-------------------------|------------------------------|---------------------------|
| DESIGNED BY: JRM | DRAWN BY: PMA | CHECKED BY: JRM | REVIEWED BY: G |
| PROJECT No.: IRSD 1910 | | DATE: JANUARY 2022 | SCALE: AS SHOWN |

CLIENT

**Irvington Union Free
School District**

Main Street School Renovations



**101 Main Street
Irvington, NY 10533**

SED Number:66-04-02-02-0-001-016

CONTRACT

CONTRACT P
PLUMBING CONTRACT

| STATUS |
|--------|
|--------|

FINAL REBID DOCUMENT

SHEET TITLE

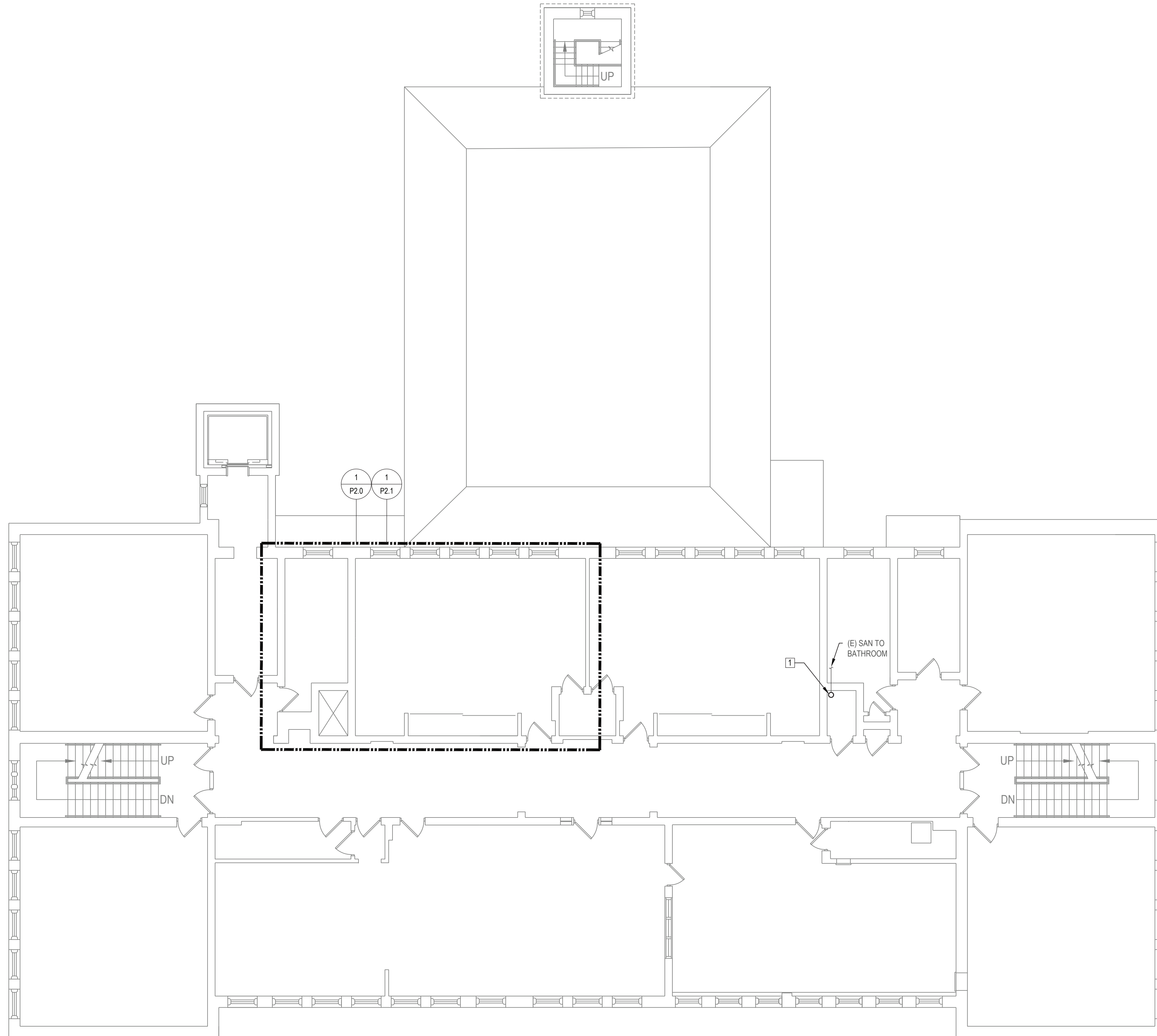
SANITARY WASTE FIRST FLOOR PLAN

DRAWING No.

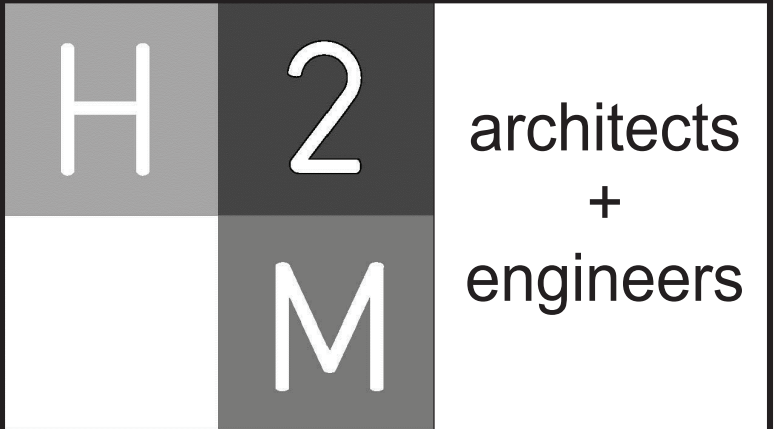
P1.2

K:\IRSD (Ivington UFSD)\IRSD 1910 (Main St. School Renovations)\02-BIM-CADD\plumb\1.2 - Plumbing First Floor Plan.dwg Last Modified: Apr 13, 2021 - 9:30am Plotted on: Nov 11, 2021 - 4:52pm By pangelone

1. DISCONNECT AND REMOVE 5" SANITARY RISER IN CHASE WALL. RECONNECT NEW 5" SANITARY RISER TO EXISTING BRANCH PIPING. CONTRACTORS SHALL OPEN UP EXISTING CHASE WALL TO ACCESS RISER PIPING AND TO PATCH AND REPAIR TO MATCH EXISTING FINISHES.



1 Sanitary Waste Second Floor Plan
SCALE: 1/8"=1'-0"



2700 Westchester Avenue, Suite 415
Purchase, NY 10577
914.358.5623 • www.h2m.com

CONSULTANTS:

[illegible]

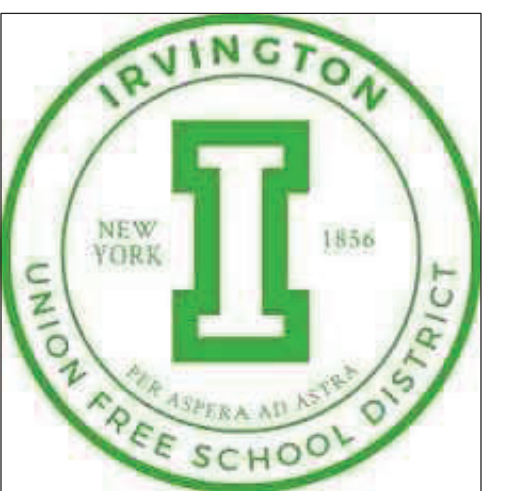
"ALTERATION OF THIS DOCUMENT EXCEPT BY A LICENSED PROFESSIONAL IS ILLEGAL"

| | | | |
|----------------------------------|-------------------------|------------------------------|---------------------------|
| DESIGNED BY: JRM | DRAWN BY: PMA | CHECKED BY: JRM | REVIEWED BY: G |
| PROJECT No.: IRSD 1910 | | DATE: JANUARY 2022 | SCALE: AS SHOWN |

CLIENT

**Irvington Union Free
School District**

Main Street School Renovations



**101 Main Street
Irvington, NY 10533**

SED Number:66-04-02-02-0-001-016

CONTRACT

CONTRACT P
PLUMBING CONTRACT

| STATUS |
|--------|
|--------|

FINAL REBID DOCUMENT

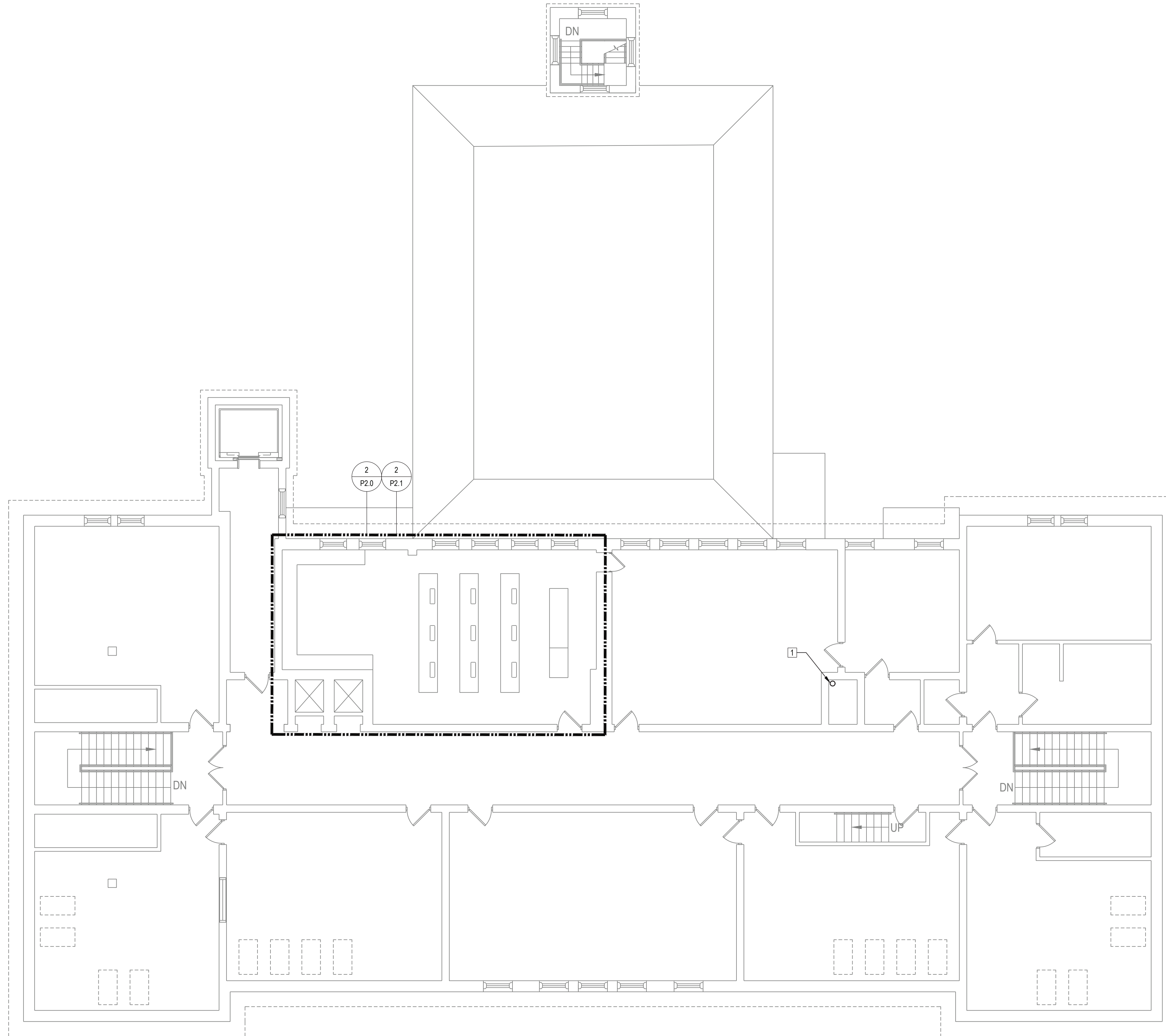
SHEET TITLE

SANITARY WASTE SECOND FLOOR PLAN

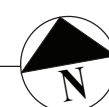
DRAWING No.

P1.3

1. DISCONNECT AND REMOVE 5" SANITARY RISER IN CHASE WALL. RECONNECT NEW 5" SANITARY RISER TO EXISTING BRANCH PIPING. CONTRACTORS SHALL OPEN UP EXISTING CHASE WALL TO ACCESS RISER PIPING AND TO PATCH AND REPAIR TO MATCH EXISTING FINISHES.



1 Sanitary Waste Third Floor Plan
SCALE: 1/8"=1'-0"



2700 Westchester Avenue, Suite 415
Purchase, NY 10577
914.358.5623 • www.h2m.com

CONSULTANTS:

[illegible]

*ALTERATION OF THIS DOCUMENT EXCEPT BY A LICENSED PROFESSIONAL IS ILLEG

| | | | |
|----------------------------------|-------------------------|------------------------------|---------------------------|
| DESIGNED BY: JRM | DRAWN BY: PMA | CHECKED BY: JRM | REVIEWED BY: G |
| PROJECT No.: IRSD 1910 | | DATE: JANUARY 2022 | SCALE: AS SHOWN |

CLIENT _____

Main Street School Renovations



SED Number:66-04-02-02-0-001-010

CONTRACT

STATUS

SHEET TITLE

DRAWING No.

P1.4

\\IRSD\Innovation\IFSD\1910\Main St School Renovations\102-BM-CAD\cyl\cylump1\4 - Plumbing Third Floor Plan.dwg Last Modified: Jan 26, 2021 - 4:52pm By: rangelone



- Key Plan**
SCALE: 1/64"=1'-0"



