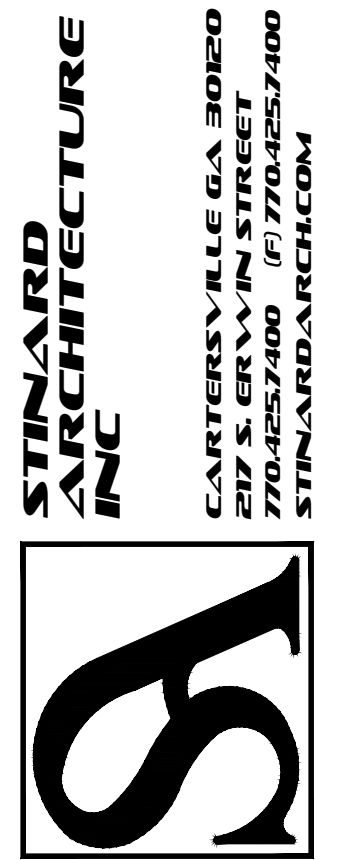




THESE DRAWINGS AND DESIGNS ARE THE PROPERTY OF STINARD ARCHITECTURE INC. AND SHALL NOT BE REPRODUCED OR COPIED IN ANY MANNER WITHOUT THE WRITTEN PERMISSION OF STINARD ARCHITECTURE INC. ANY REUSE OF THESE DRAWINGS WITHOUT THE WRITTEN PERMISSION OF STINARD ARCHITECTURE INC. IS PROHIBITED. THE ARCHITECT NOTED OF ANY DISCREPANCIES BEFORE PROCEEDING WITH CONSTRUCTION. DO NOT SCALE DRAWINGS.

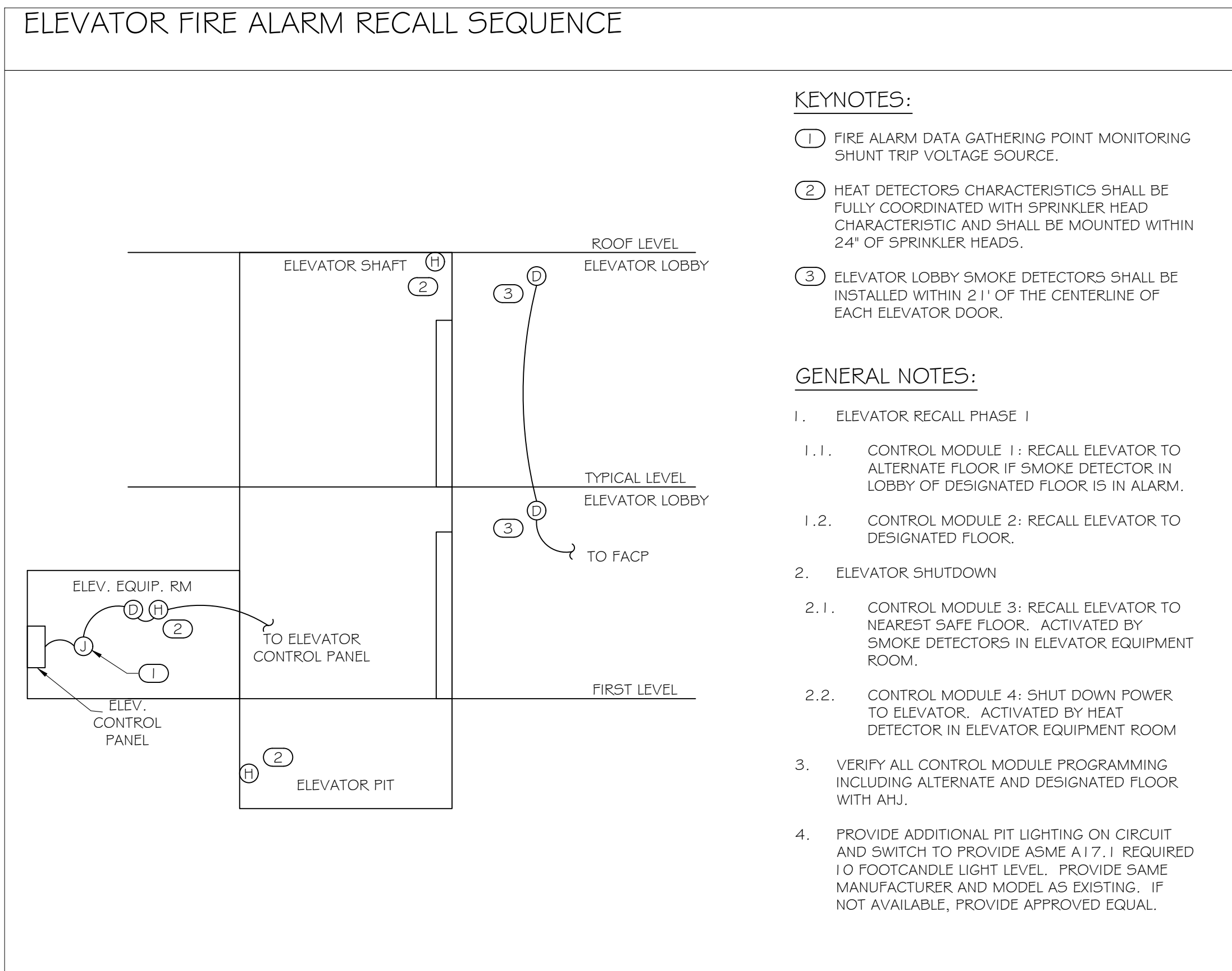
Life Storage #230
Self Storage Phase II
1639 Route 22
Brewster, NY 10509



ISSUE: FOR CONSTRUCTION
REVISIONS:

PROJECT NUMBER	201941
DATE	6-5-20

SHEET NUMBER	E1.2
--------------	------



GENERAL NOTES

REFER TO ARCHITECTURAL REFLECTED CEILING PLAN FOR EXACT LOCATIONS OF ALL CEILING MOUNTED DEVICES.

ALL RECEPTACLES SHALL BE GROUNDED AS REQUIRED BY ARTICLE 250-146.

PROVIDE UNSWITCHED HOT LEG OF CIRCUIT TO EMERGENCY LIGHTING AND EXIT SIGNS.

EXTERIOR FIXTURES SHALL BE CONNECTED TO LIGHTING CONTROL PANEL AND SHALL BE TIME CLOCK CONTROLLED UNLESS OTHERWISE NOTED.

LIGHTS LABELED NL ARE NIGHT LIGHTS.

CONTRACTOR SHALL ENSURE SELECTIVE COORDINATION IS MAINTAINED FOR ELEVATOR CIRCUITS.

PROVIDE 1-1/2" C WITH PULL STRING FROM ELECTRICAL ROOM TO ELEVATOR MACHINE ROOM FOR LOW VOLTAGE.

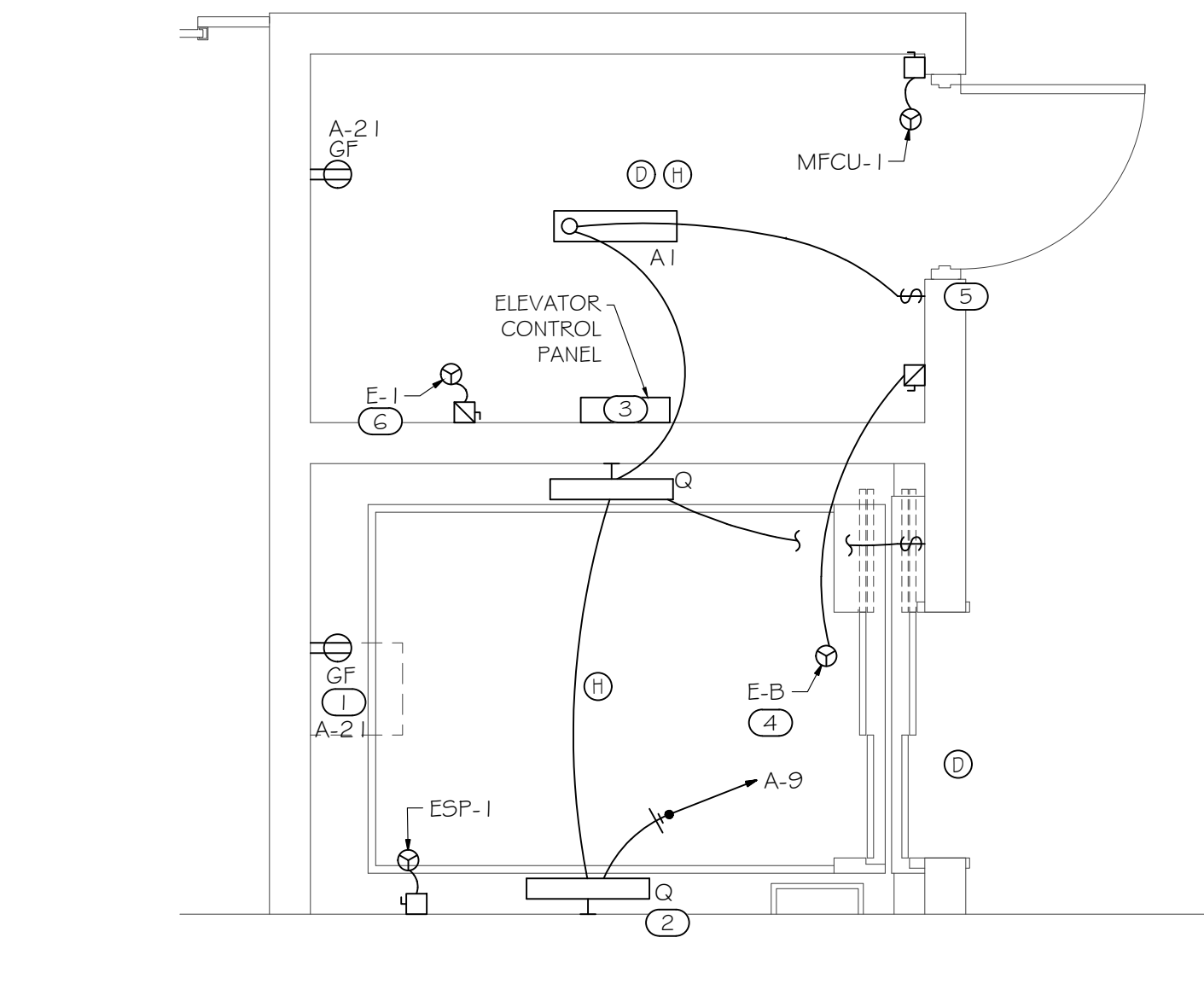
ALL CABLES AND WIRES BEING ROUTED IN FLENUM SPACES NOT IN CONDUITS SHALL BE FLENUM RATED.

COORDINATE ALL PROGRAMMING OF LIGHTING CONTROL SYSTEMS WITH OWNER PRIOR TO DEVELOPMENT OF CLOSE-OUT DOCUMENTS.

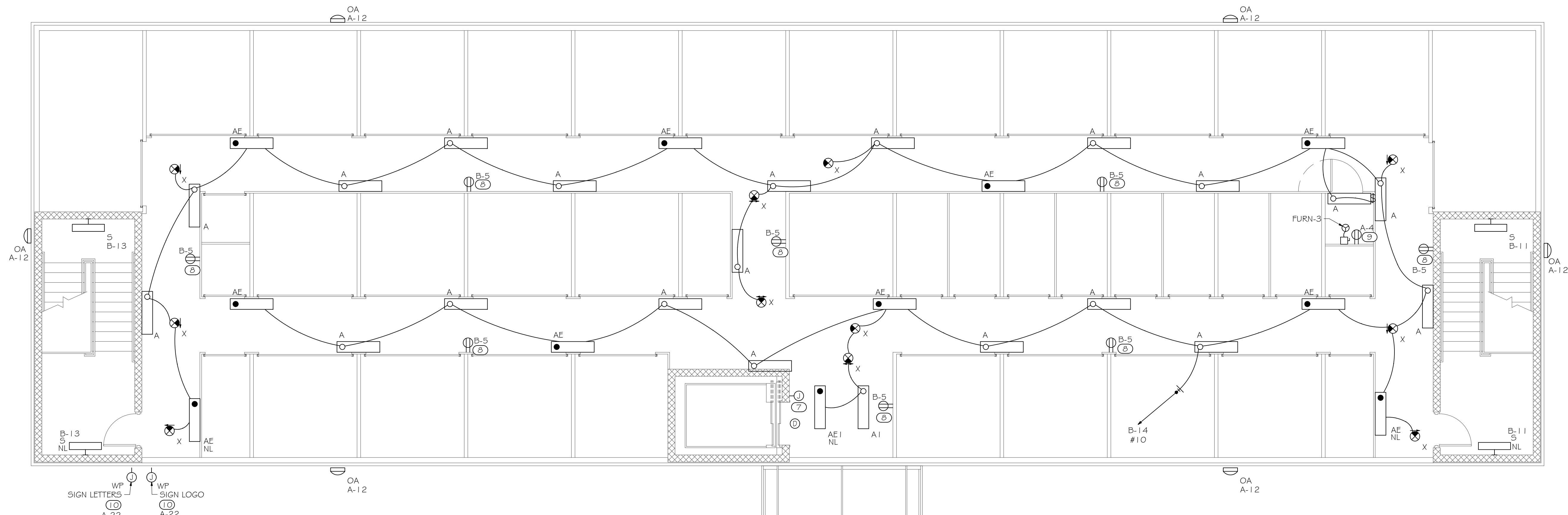
AUTOMATIC CONTROLS TO SHUT OFF ALL BUILDING LIGHTING INSTALLED IN ALL BUILDINGS. FIELD COORDINATE EXACT REQUIREMENT WITH OWNERS REPRESENTATIVE FOR THE SHUTOFF OPERATION. TIMECLOCK OR VACANCY SENSORS.

KEYNOTES

- GFCI DUPLEX RECEPTACLE. PROVIDE ONE AT THE PIT AND ANOTHER AT THE TOP OF THE SHAFT.
- LIGHTING SHALL NOT BE CONNECTED TO LOAD SIDE OF GFCI RECEPTACLE. PROVIDE LIGHTING FIXTURES AT THE PIT AND AT THE TOP OF THE SHAFT.
- ELEVATOR CONTROL PANEL. SEE ELEVATOR FIRE ALARM RECALL SEQUENCE.
- 30A/1 PNEUMA I DISCONNECT SWITCH FOR ELEVATOR CAB LIGHTING AND FAN.
- PROVIDE LIGHT SWITCHES AT PIT LEVEL AND AT TOP OF THE SHAFT. EACH SWITCH SHALL CONTROL EACH RESPECTIVE LIGHT FIXTURE.
- 200A/3P/NEMA 4X EQUIPMENT DISCONNECT SWITCH FOR ELEVATOR MOTOR.
- PROVIDE JUNCTION BOX FOR CALL BOX. PROVIDE JUNCTION BOX AND CONDUIT WITH PULL STRING TO HALLWAY SYSTEM.
- PROVIDE RECEPTACLES IN CORRIDORS LOCATED AT 7' AFF WITH LOCKABLE COVERS.
- LOCATE RECEPTACLE BY EACH FURN FOR POWER FOR CONDENSATE PUMP. FIELD COORDINATE EXACT LOCATION.
- WEATHERPROOF J-BOX FOR EXTERIOR SIGN. COORDINATE IN FIELD WITH SIGN INSTALLER FOR LOCATION AND OTHER REQUIREMENTS. EXTERIOR SIGN TO BE CONTROLLED BY LIGHTING CONTRACTOR WITH PHOTOCELL AND TIMER.



ENLARGED ELEVATOR PLAN
SCALE: 3/8" = 1'-0"



SECOND FLOOR PLAN
SCALE: 3/16" = 1'-0"