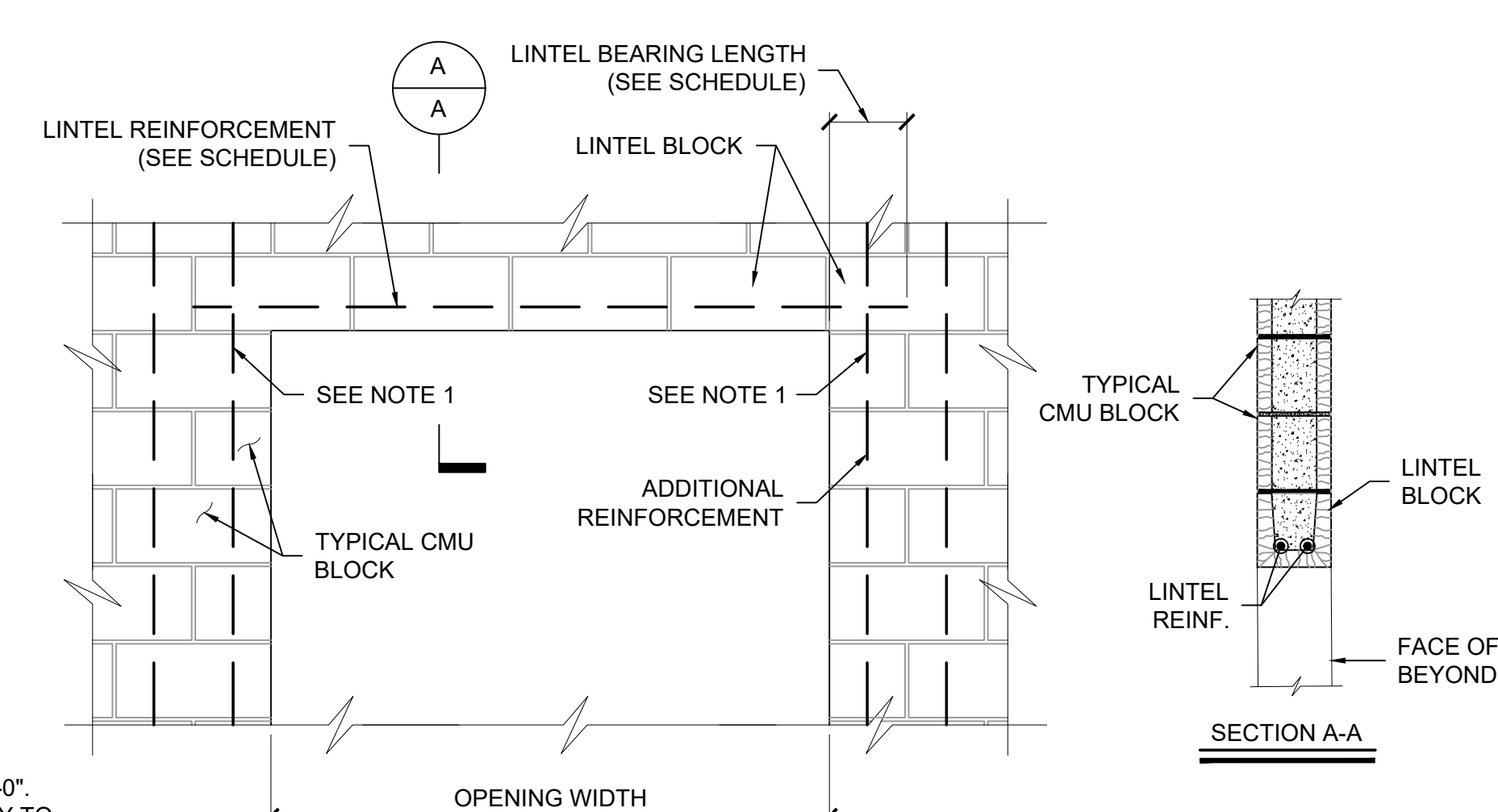
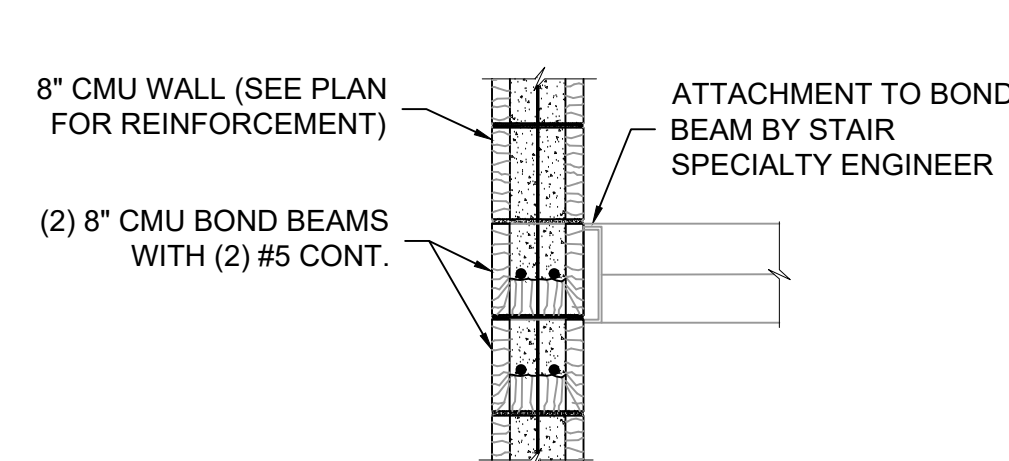


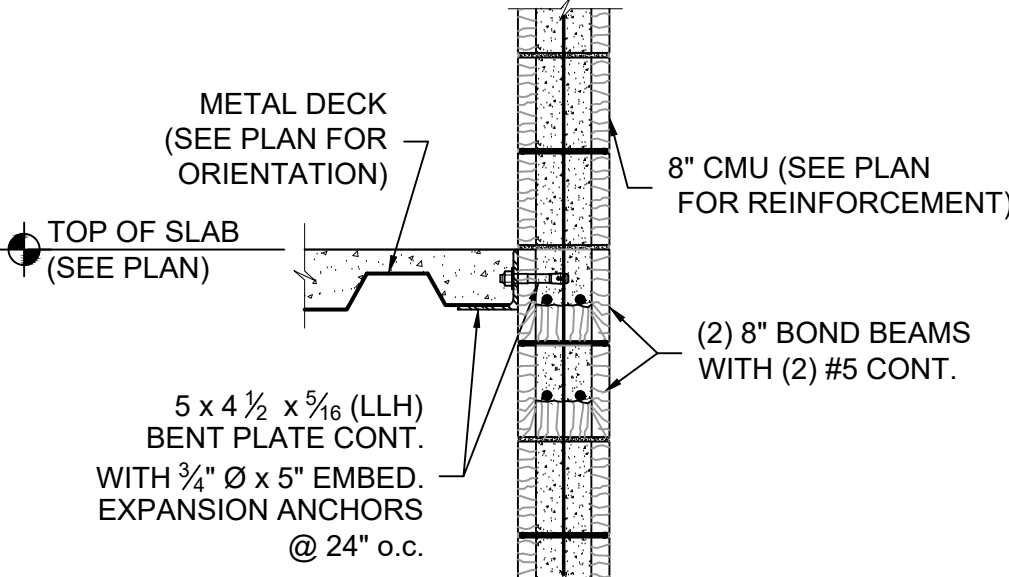
DETAIL OF TYPICAL REINFORCED CMU WALL CONSTRUCTION 1
SCALE: NONE S3.1



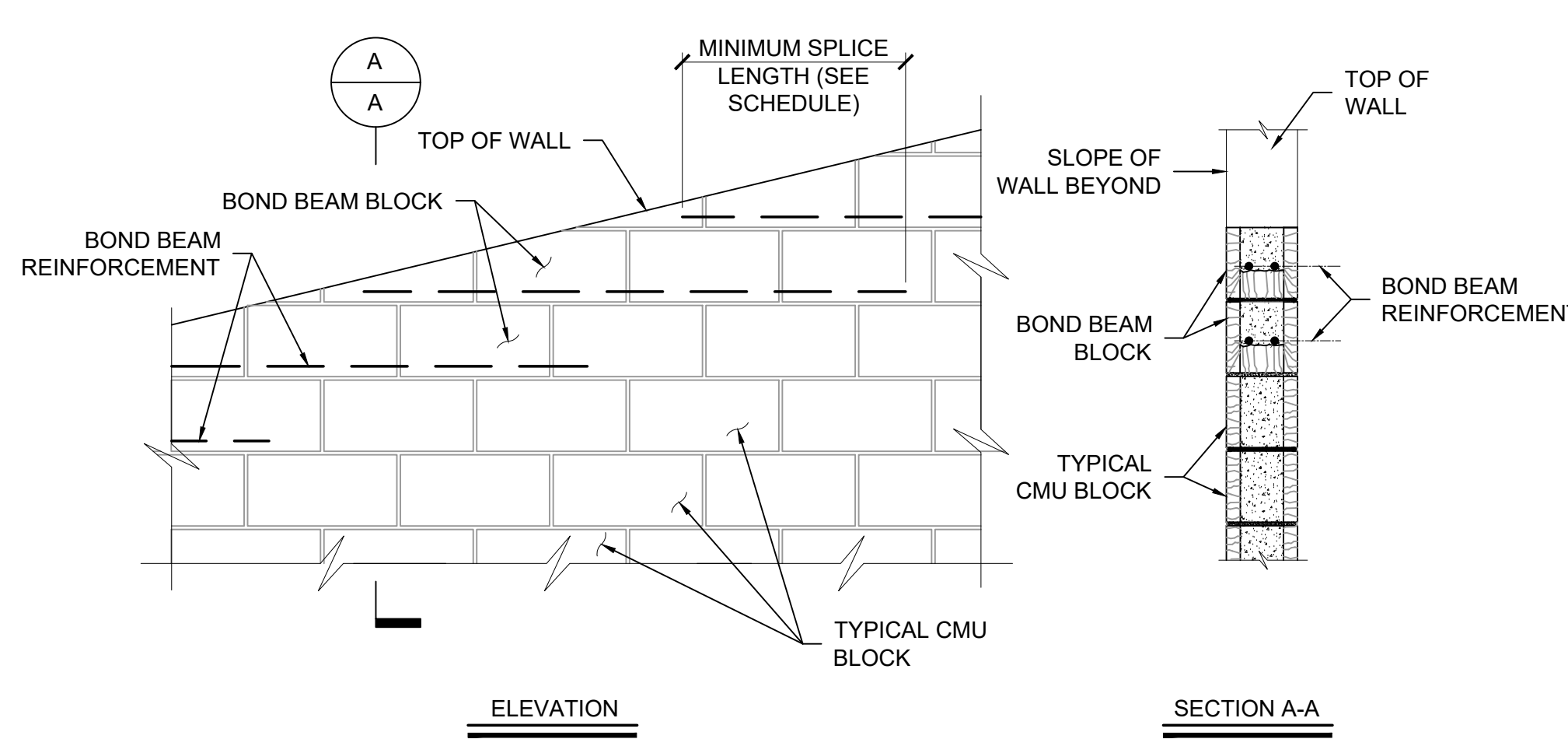
DETAIL OF CMU WALL LINTEL 2
SCALE: 3/4" = 1'-0" S3.1



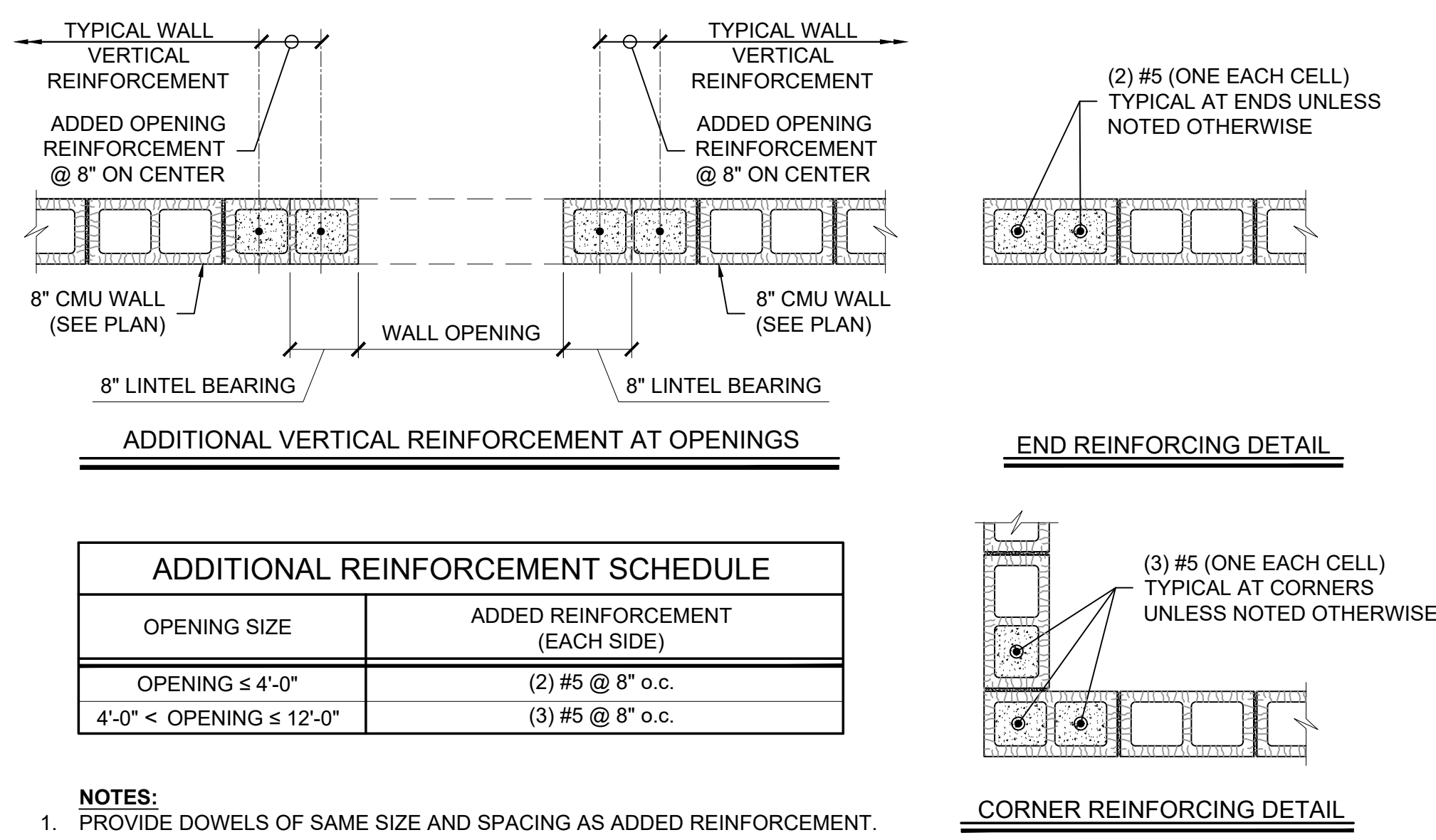
DETAIL OF TYPICAL STAIR LANDING SLAB SUPPORT AT CMU WALL 3
SCALE: 3/4" = 1'-0" S3.1



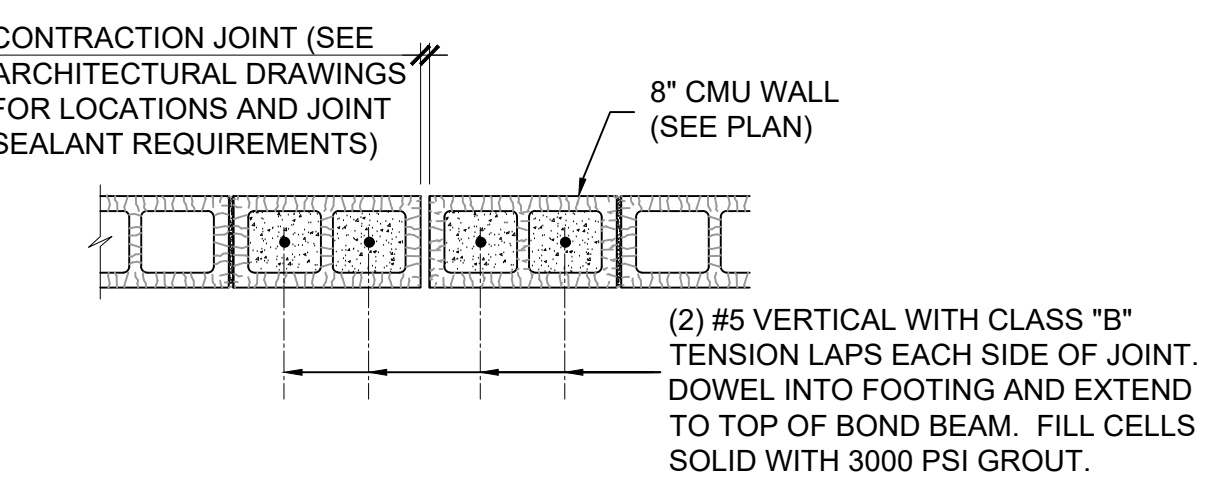
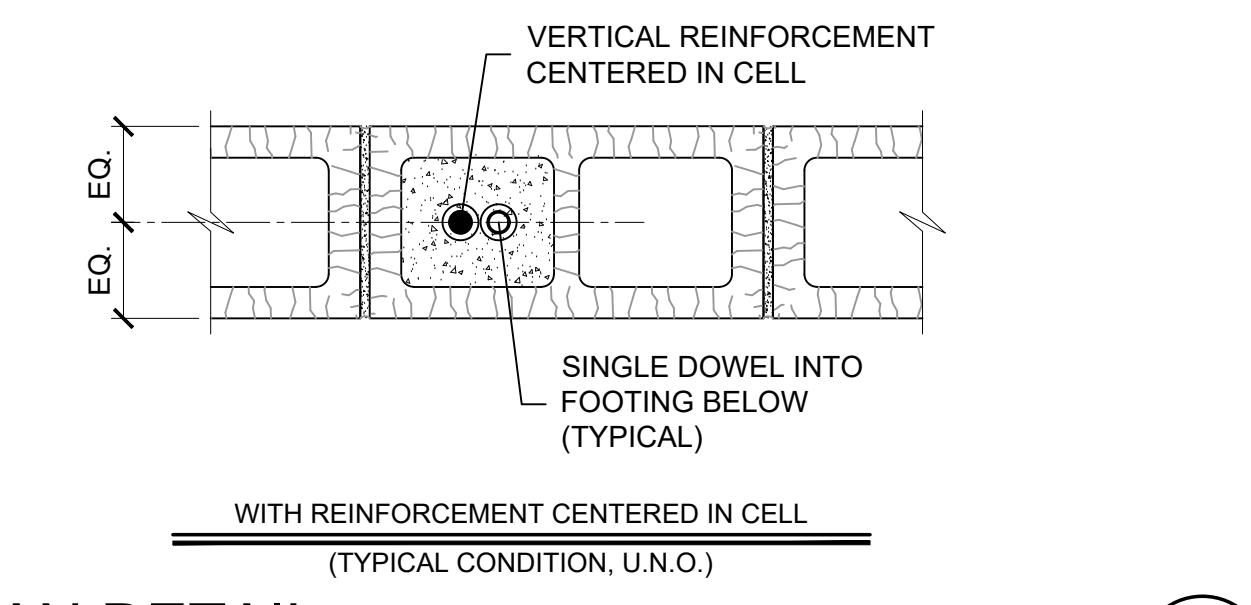
SECTION THRU FLOOR SLAB SUPPORT AT CMU WALL 4
SCALE: 3/4" = 1'-0" S3.1



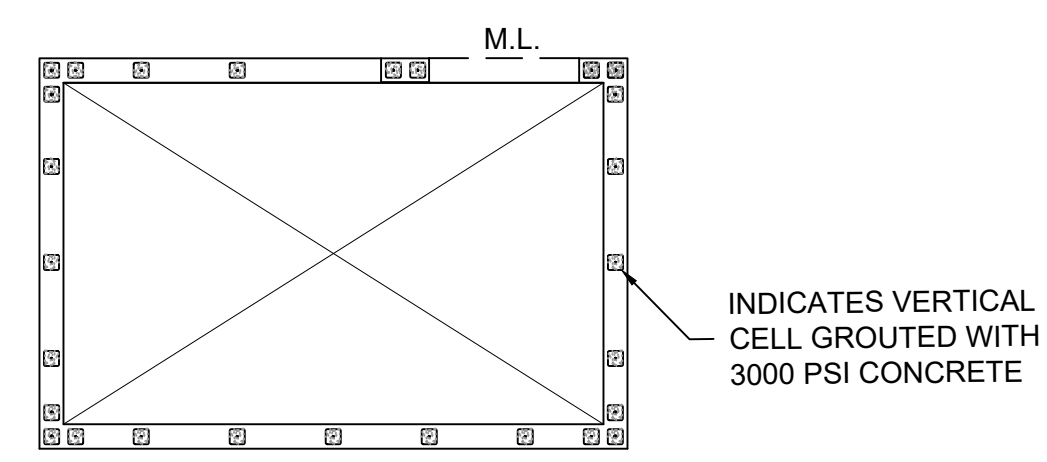
DETAIL OF BOND BEAM TRANSITION AT TOP OF SLOPING WALL 5
SCALE: NONE S3.1



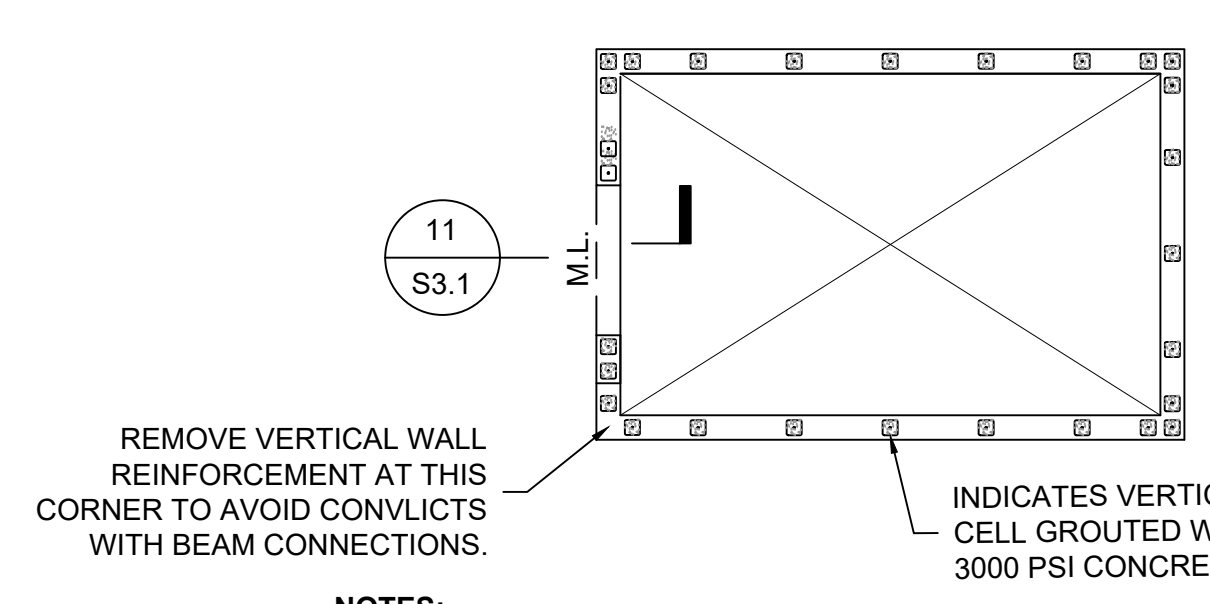
DETAIL OF ADDITIONAL VERTICAL REINFORCEMENT AT MASONRY WALLS 6
SCALE: 3/4" = 1'-0" S3.1



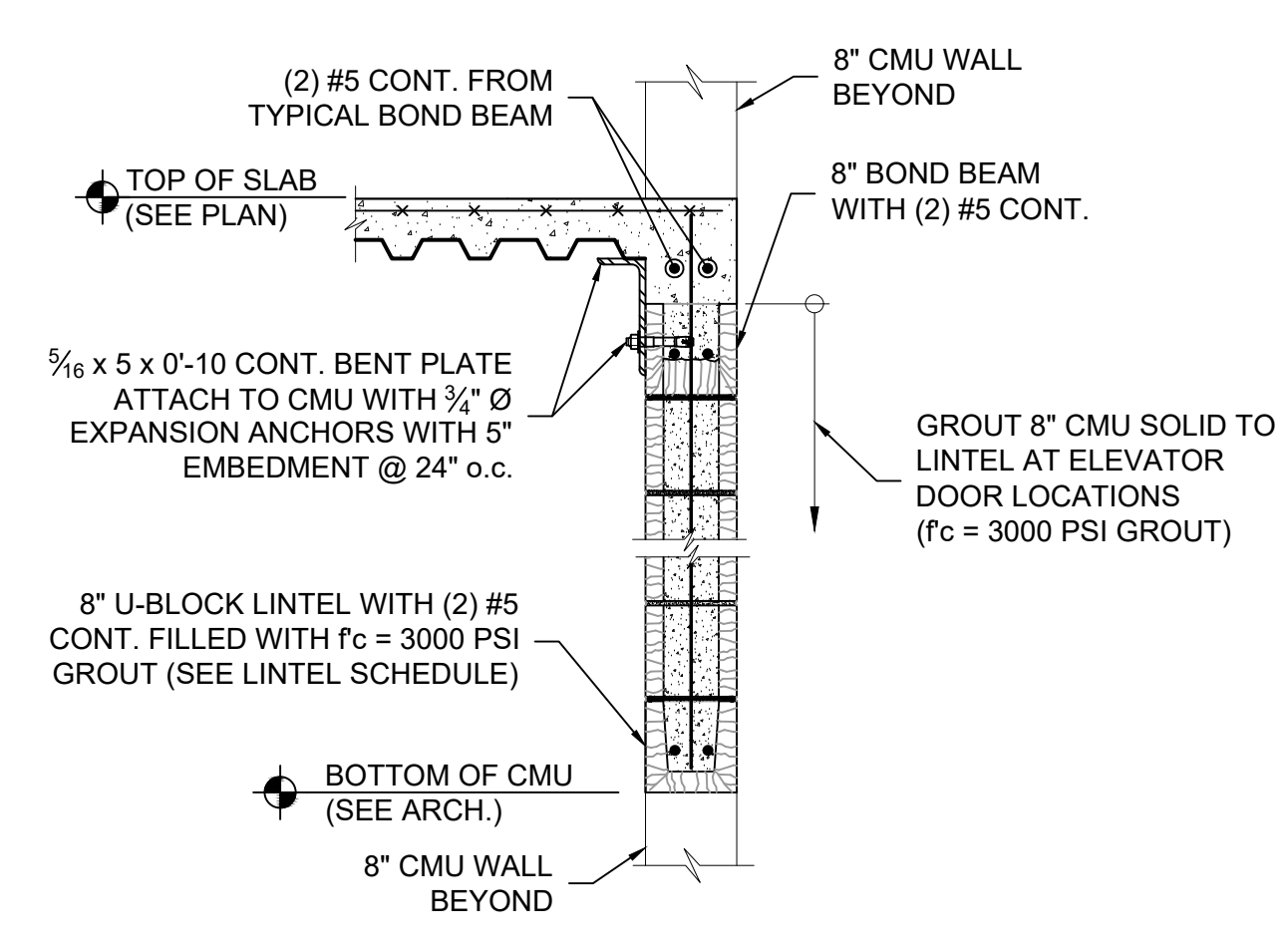
DETAIL OF TYPICAL MASONRY WALL CONTRACTION JOINT 8
SCALE: NONE S3.1



PLAN DETAIL AT STAIR WALLS 9
SCALE: NONE S3.1



PLAN DETAIL AT ELEVATOR WALLS 10
SCALE: NONE S3.1



SECTION THRU ELEVATOR DOOR 11
SCALE: 3/4" = 1'-0" S3.1

- NOTES:
1. VERTICAL WALL REINFORCEMENT #5 @ 32" o.c. AS SHOWN FULL HEIGHT AT ALL LEVELS.
 2. PROVIDE 16" DEEP BOND BEAM WITH (2) #5 CONTINUOUS TOP AND BOTTOM AT TOP OF WALL AND AT FLOOR LEVELS. PROVIDE 16" DEEP BOND BEAM WITH (2) #5 CONTINUOUS TOP AND BOTTOM AT STAIR LANDING LEVELS FOR ATTACHMENT OF POST INSTALLED SUPPORTS. COORDINATE LOCATION AND DETAILS WITH STAIR MANUFACTURER. PROVIDE CORNER BARS.
 3. SEE ARCHITECTURAL DRAWINGS FOR EXACT LOCATION OF OPENINGS.
 4. M.L. INDICATES MASONRY LINTEL OVER OPENING BELOW. SEE LINTEL SCHEDULE ON 2 / S3.1.
 5. PROVIDE FULLY GROUTED CELLS AT ALL STAIR HANDRAIL LOCATIONS.

- NOTES:
1. VERTICAL WALL REINFORCEMENT #5 @ 32" o.c. AS SHOWN FULL HEIGHT AT ALL LEVELS.
 2. PROVIDE 16" DEEP BOND BEAM WITH (2) #5 CONTINUOUS TOP AND BOTTOM AT ALL FLOOR LEVELS, ROOF LEVEL, AND AT TOP OF WALL U.N.O. PROVIDE CORNER BARS.
 3. SEE ARCHITECTURAL DRAWINGS FOR EXACT LOCATION OF OPENINGS.
 4. M.L. INDICATES MASONRY LINTEL OVER OPENING BELOW. SEE LINTEL SCHEDULE ON 2 / S3.1.