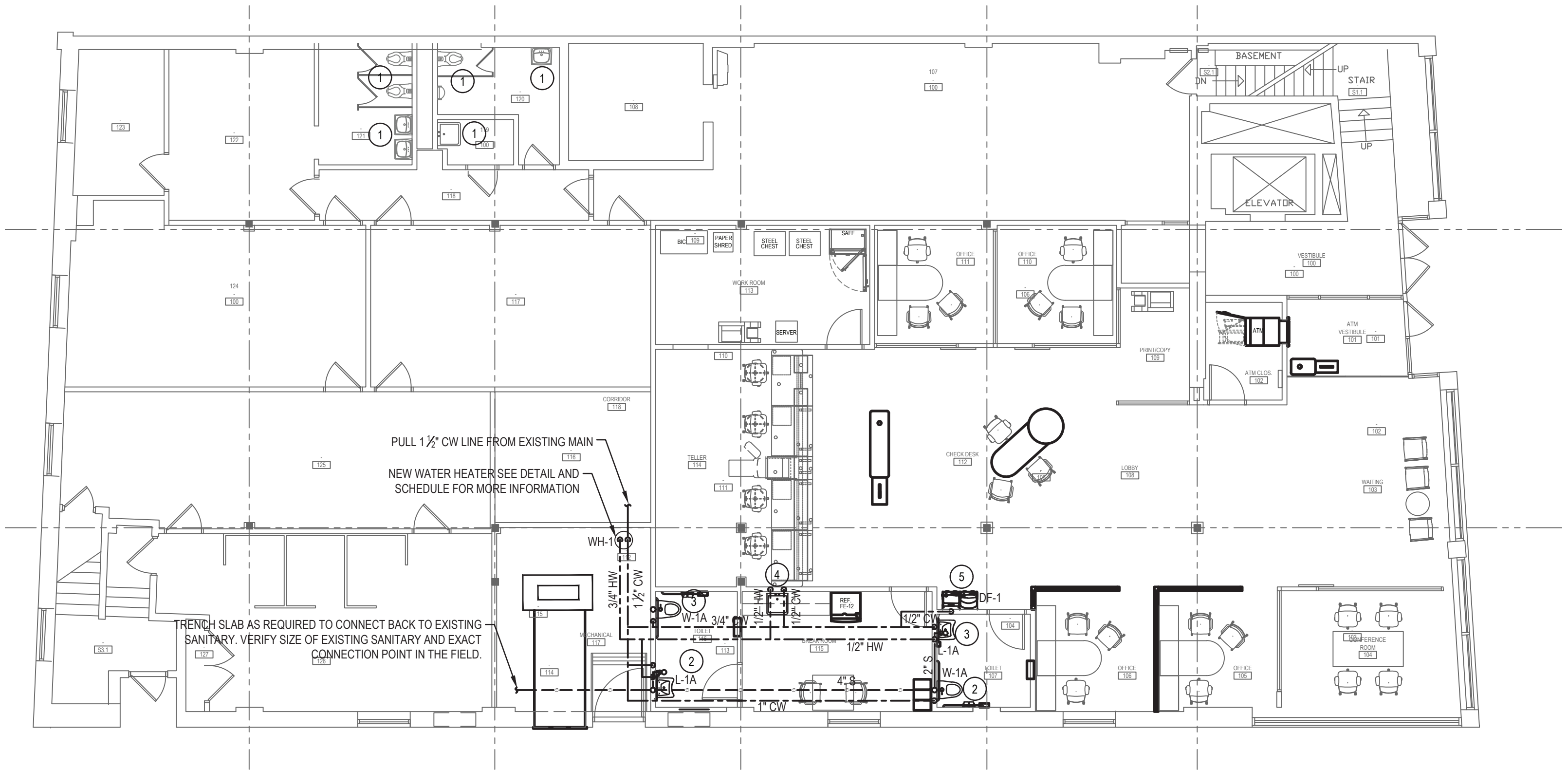


1 PLAN: DEMOLITION
SCALE: 1/8"=1'-0"



DEMOLITION KEY NOTES	
1.	EXISTING TO REMAIN.
2.	DEMO EXISTING WATER CLOSET. PREP FOR NEW WATER CLOSET IN NEW LOCATION.
3.	DEMO EXISTING LAVATORY. REMOVE ASSOCIATED PIPING AND TRIM. PREP FOR NEW LAVATORY IN NEW LOCATION.



2 PLAN: CONSTRUCTION
SCALE: 1/8"=1'-0"

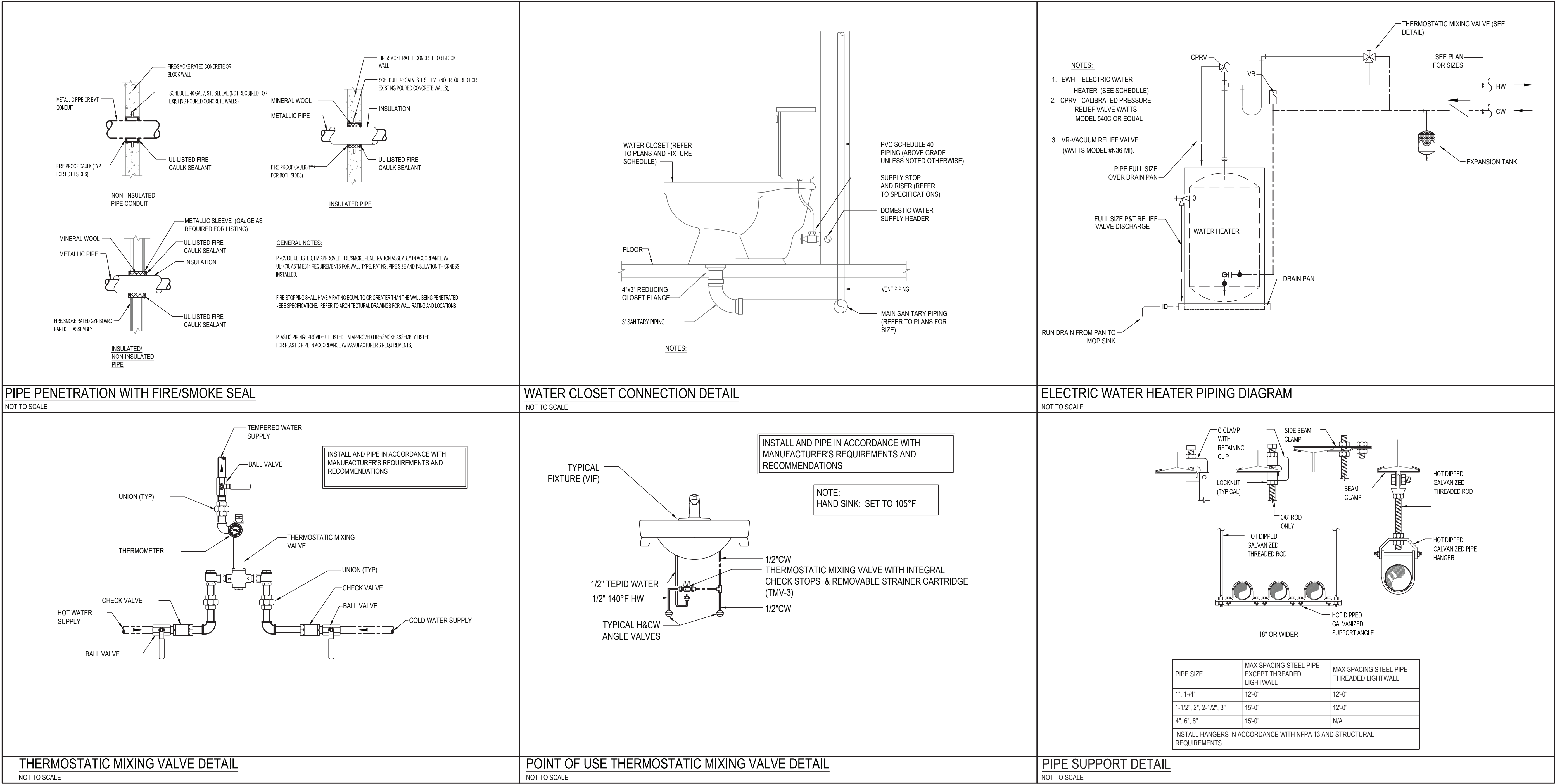


WORK KEY NOTES	
1.	EXISTING TO REMAIN.
2.	INSTALL NEW WATER CLOSET AND TRIM IN NEW LOCATION. CONNECT NEW PIPING AND TRIM AS REQUIRED TO EXISTING FOR A COMPLETE INSTALLATION. VERIFY IN FIELD EXISTING CONDITIONS.
3.	INSTALL NEW LAVATORY AND TRIM IN NEW LOCATION. CONNECT NEW PIPING AND TRIM AS REQUIRED TO EXISTING FOR A COMPLETE INSTALLATION. VERIFY IN FIELD EXISTING CONDITIONS.
4.	INSTALL NEW KITCHEN SINK AND TRIM IN NEW LOCATION. CONNECT NEW PIPING AND TRIM AS REQUIRED TO EXISTING FOR A COMPLETE INSTALLATION. VERIFY IN FIELD EXISTING CONDITIONS.
5.	INSTALL NEW WATER FOUNTAIN. CONNECT TO EXISTING CW & SANITARY LINES. SEE SCHEDULE FOR MORE INFORMATION.

PLUMBING PIPING SYSTEM LEGEND		
EXISTING	NEW	DESCRIPTION
		DOMESTIC COLD WATER
		DOMESTIC HOT WATER SUPPLY
		DOMESTIC 140°F HOT WATER SUPPLY
		DOMESTIC HOT WATER RETURN
		SANITARY WASTE
		SANITARY WASTE BELOW SLAB
		SANITARY VENT
		NATURAL GAS
		NATURAL GAS BELOW SLAB
		CONDENSATE DRAIN
		INDIRECT WASTE
		GREASE WASTE
		GREASE WASTE BELOW SLAB

PLUMBING SYMBOL LEGEND	
SYMBOL	DESCRIPTION
	BALL VALVE
	CHECK VALVE
	GAS VALVE
	THERMOSTATIC MIXING VALVE
	GATE VALVE
	SUPPLY VALVE
	REDUCED PRESSURE BACKFLOW PREVENTER
	FLOOR CLEANOUT
	FLOOR DRAIN
	HOSE BIBB
	VENT THROUGH ROOF
	RECIRCULATION PUMP
	WATER HAMMER ARRESTOR
	TRAP PRIMER
	1/2" TRAP
	PIPE DOWN
	PIPE UP
	CAPPED PIPE
	CLEANOUT PLUG
	UNION
	DIRECTION OF FLOW
	PIPE OR EQUIPMENT TO BE DEMOLISHED
	PLUMBING FIXTURE
	ADA COMPLIANT PLUMBING FIXTURE

Revised By:	
Date:	05/25/2022
Description:	ISSUED FOR PERMIT
Revision:	



PIPE AND FITTING SCHEDULE						
DESCRIPTION	SIZE	PIPE		FITTING		REMARKS
		TYPE	SCHEDULE	TYPE	RATING	
SOIL, WASTE AND VENT ABOVE GROUND	ALL	CI-HN / PVC	SV / SCH 40	CI / PVC	SV	4 BAND FOR 4" AND SMALLER 6 BAND FOR LARGER THEN 4"
SOIL, WASTE AND VENT BELOW GROUND	ALL	CI-HBS / PVC	SV / SCH 40	CI / PVC	SV	--
DOMESTIC COLD WATER WITHIN BUILDING	ALL	COPPER	TYPE L	CUS	STD	HARD TEMPERED
DOMESTIC HOT WATER WITHIN BUILDING	ALL	COPPER	TYPE L	CUS	STD	HARD TEMPERED
DOMESTIC HOT WATER RECIRCULATION WITHIN BUILDING	ALL	COPPER	TYPE L	CUS	STD	HARD TEMPERED
INDIRECT WASTE AND CONDENSATE PIPING	ALL	COPPER	TYPE L	CUS	STD	HARD TEMPERED
DOMESTIC HOT & COLD WATER PIPING WITHIN BUILDING, BELOW SLAB	ALL	COPPER	TYPE K	CUS	STD	SOFT TEMPERED, NO JOINTS BELOW SLAB
DOMESTIC WATER SERVICE PIPING	2-1/2" AND SMALLER	COPPER	TYPE K	CUS	STD	SOFT TEMPERED, NO JOINTS BELOW SLAB
DOMESTIC WATER SERVICE PIPING	3" AND LARGER	CLDI	CLASS 52	DMJ	250	--
TRAP PRIMER PIPING	ALL	PEX	--	--	--	NO JOINTS ALLOWED BELOW SLAB
GAS PIPING	2" AND SMALLER	STL-BLK	SCH. 40	MIT	CLASS 150	--
GAS PIPING	2-1/2" AND LARGER	STL-BLK	SCH. 40	WE	SCH. 40	--

NOTES:
1. TRANSITION COUPLINGS AND NO-HUB PIPE SHALL NOT BE INSTALLED BELOW SLAB OR IN ANY BURIED CONDITIONS IN CONTACT WITH EARTH
2. ALL PIPING IN RETURN AIR CEILING PLENUM INSTALLATIONS SHALL BE UL LISTED FOR THIS APPLICATION
3. MECHANICAL JOINTS ARE ALLOWED FOR SERVICE. PURPOSED ONLY IN WALLS AND CEILINGS BUT MUST BE READILY ACCESSIBLE. 25/50 PVDF IS UL LISTED FOR RETURN AIR CEILING PLENUM ISTALLATIONS

ELECTRIC WATER HEATER SCHEDULE									
MARK	MAKE & MODEL	STORAGE	RECOVERY @ TEMP. RISE	MIXING VALVE	ELECTRIC				REMARKS
					VOLTAGE	PHASE	AMPS	ELEMENT	
WH-1	AO SMITHDEL-10	10 GAL.	15 GPH @ 80	THERMOSTATIC	208	1	—	3KW	

NOTES:
1. PROVIDE FACTORY INSTALLED HEAVY DUTY ELECTRICAL JUNCTION BOX, CONTROLS, WITH T-STATS SET ON 120°F.
2. INSTALL WATER HEATER IN ACCORDANCE TO SPC, SMC CODES, NEC, AND APPLICABLE STANDARDS AND MANUFACTURERS RECOMMENDATIONS.
3. CONTACT MANUFACTURERS REPRESENTATIVE FOR HEATERS ELECTRICAL DATA BEFORE FINAL ORDER IS MADE.
4. INSTALL WATER HEATER IN ACCORDANCE WITH BUILDING CODE - PLUMBING & MECHANICAL (WITH LATEST AMENDMENTS) CODES, ENERGY CODE, AND APPLICABLE STANDARDS AND MANUFACTURERS RECOMMENDATIONS.
5. PROVIDE BRASS DRAIN VALVE, & ALL REQUIRED OPTIONS TO COMPLETE THE INSTALLATION.
6. WATER HEATER SHALL BE WIRED FOR NON-SIMULTANEOUS ELEMENT OPERATION.

INSULATION SCHEDULE					
SYSTEM	PIPE SIZE	INSULATION TYPE	INSULATION THICKNESS	FITTINGS, VALVES, FLANGES INSULATION TYPE	REMARKS
DOMESTIC COLD WATER	ALL	MINERAL FIBER, ASJ, SSL	1"	MOLDED, PRE-FORMED MINERAL FIBER WITH PVC JACKET	TYPE 1
DOMESTIC HOT WATER	ALL	MINERAL FIBER, ASJ, SSL	1"	MOLDED, PRE-FORMED MINERAL FIBER WITH PVC JACKET	TYPE 1
DOMESTIC WATER UNDERGROUND & INSLAB	ALL	CLOSED CELL	1"	ARMAPLEX	--
CONDENSATE	ALL	MINERAL FIBER, ASJ, SSL	1/2"	MOLDED, PRE-FORMED MINERAL FIBER WITH PVC JACKET	TYPE 1
FLOOR DRAIN TRAP IN MECHANICAL ROOM	ALL	MINERAL FIBER, ASJ, SSL	1"	MOLDED, PRE-FORMED MINERAL FIBER WITH PVC JACKET	TYPE 1 INCLUDE 8" HORIZONTAL RUN

NOTES:
1. FIBERGLASS INSULATION: THERMAL CONDUCTIVITY 22 TO 28BTU x IN./H x FT x °F W/ 100°F MEAN TEMP. THICKNESS BASED ON ASHRAE 90.1, 1999 6.2.4.5
2. REFER TO SPECIFICATIONS FOR ADDITIONAL REQUIREMENTS

VALVE SCHEDULE								
DESCRIPTION	SIZE	TYPE						REMARKS
		GATE	GLOBE	CHECK	BALL	PLUG	BALANCE	
DOMESTIC COLD WATER	3" AND SMALLER	GVT	GLVT	CVT	BVT	--	--	125PSI --
DOMESTIC HOT WATER	3 AND SMALLER	GVT	GLVT	CVT	BVT	--	CBV	125PSI --
BACKFLOW PREVENTER	2" AND SMALLER	--	--	--	BVT	--	--	125PSI --
BACKFLOW PREVENTER	2-1/2" AND LARGER	GVF	--	--	--	--	--	125PSI --
GAS	2" AND SMALLER	--	--	--	--	PGVT	--	125PSI --
GAS	2-1/2" AND LARGER	--	--	--	--	PGVF	--	125PSI --

NOTES:
1. SOLENOID VALVE: UL LISTED, FM APPROVED FOR GAS SERVICE, EXPLOSION PROOF, TWO -WAY NORMALLY CLOSED, ASCO 8044 SERIES W/MANUAL RESET. (EMERGENCY GAS SHUT-OFF VALVE ASSEMBLY)
2. CALIBRATED PRESSURE RELIEF VALVE: INSTALL A MINIMUM OF 12" ABOVE WATER HEATER AND PIPE DISCHARGE TO ADEQUATE LOCATION, WATTS MODEL 540C

ABBREVIATION	DESCRIPTION	ABBREVIATION	DESCRIPTION
BVT	BALL VALVE THREADED - 2-PIECE, FULL PORT, 400PSI, BRONZE	CVT	CHECK VALVE THREADED - BRONZE
CBV	CALIBRATED BALANCING VALVE - BRONZE	GVT	GATE VALVE THREADED - BRONZE
CPRV	CALIBRATED PRESSURE RELIEF VALVE	PGVT	PLUG VALVE THREADED - AGA APPROVED

PLUMBING FIXTURE/EQUIPMENT SCHEDULE					
MARK	FIXTURE, MODEL NUMBER AND DESCRIPTION	ROUGH-IN			
		WASTE/ SANITARY	VENT	CW	HW
W-1A	WATER CLOSET & PISTON FLUSH VALVE, 16-1/2" ADA FLOOR MOUNTED, AMERICAN STANDARD, MADERA FLO WISE, 1.28 GPF, MODEL # 2857.128, VITREOUS CHINA, ELONGATED BOWL, 1-1/2" TOP SPUD, SIPHON JET TOILET WITH WALL SUPPLY, MANUAL FLUSH VALVE, AMERICAN STANDARD #5905.100 EXTRA HEAVY OPEN FRONT SEAT. PROVIDE ALL ITEMS REQUIRED FOR COMPLETE INSTALLATION.	4"	2"	1"	--
L-1A	LAVATORY, WALL HUNG, AMERICAN STANDARD, DECORUM MODEL # 8024.00EC, VITREOUS CHINA WALL MOUNT LAVATORY, MOEN MODEL # 8894 SINGLE HANDLE METERING FAUCET, 0.5 GPM, 0.25 GALLON PER CYCLE, ADJUSTABLE 5-60 SECTIONS, 1-1/2" CHROME PLATED CAST BRASS P-TRAP, SUPPLIES, BRASS ANGLE STOPS WITH LOOSE KEY OPERATION, GRID DRAIN, ETC. FOR COMPLETE INSTALLATION. COORDINATE MOUNTING HEIGHTS WITH ARCHITECT PRIOR TO INSTALLATION.	1-1/2"	1-1/2"	1/2"	1/2"
DF-1	DRINKING FOUNTAIN	2"	1-1/2"	1/2"	--
SA	RRWATER HAMMER ARRESTOR, PRECISION PLUMBING PRODUCTS (PPP) SC SERIES, 1/2"-1", SIZE PER MANUFACTURE RECOMMENDATIONS AND REQUIREMENTS	--	--	1/2"-1"	--

NOTES:
1. LAVATORY SUPPLY SHALL BE BRASS W/ BRASS ANGLE STOPS FOR 1/2" WATER SUPPLY LINES, W/ LOOSE KEY (WCAP), AND WALL FLANGE. ALL COMPONENTS SHALL BE POLISHED CHROME FINISH. MANUFACTURER: BRASS CRAFT OR APPROVED EQUAL.
2. CAST BODY "P" TRAP 1-1/2" x 1-1/2" WITH HEAVY CAST J-BEND & FLAT CLEANOUT PLUG, SLIP NUTS AND WALL FLANGE. ALL COMPONENTS SHALL BE POLISHED CHROME FINISH. MANUFACTURER: BRASS CRAFT OR APPROVED EQUAL.
3. STRAINERS SHALL BE FURNISHED WITH FIXTURES AS REQUIRED. FOR H/C LAVATORY OR SINKS PROVIDE OFFSET TAILPIECE.
4. PROVIDE TRUEBRO MODEL 103 (WHITE), ANTIMICROBAL HANDI LAV-GUARDS INSTALLATION KIT FOR ALL WHEELCHAIR LAVATORY & SINKS FOR WATER SUPPLIES & WASTE LINE.
5. THE PLUMBING FIXTURES VENDOR SHALL COORDINATE WITH THE PLUMBING AND GENERAL CONTRACTOR ALL PLUMBING FIXTURES ROUGH IN DIMENSIONS BEFORE CONSTRUCTION BEGIN.
6. UNLESS SHOWN ABOVE, PLUMBING FIXTURES MANUFACTURER, TRIM COLOR AND FINISH SHALL BE FURNISHED AS DIRECTED BY OWNER/ARCHITECT.
7. REFER TO ARCHITECTURAL DRAWINGS FOR STANDARD, A.D.A MOUNTING AND CHLD HEIGHTS. REFER TO ARCHITECTURAL FOR LOCATION OF A.D.A COMPLIANT SHOWER SEAT AND SHOWER BARS
8. CONTRACTOR TO PROVIDE AN EXTRA 10% OF BATTERIES, AERATORS, CARTRIDGE, ETC...
9. ALL HARD WIRED FAUCETS TO A HAVE BOX MOUNTED TRANSFORMER ABOVE CEILING. REFER TO ELECTRICAL DOCUMENTS FOR LOCATIONS AND CONNECTION POINT.