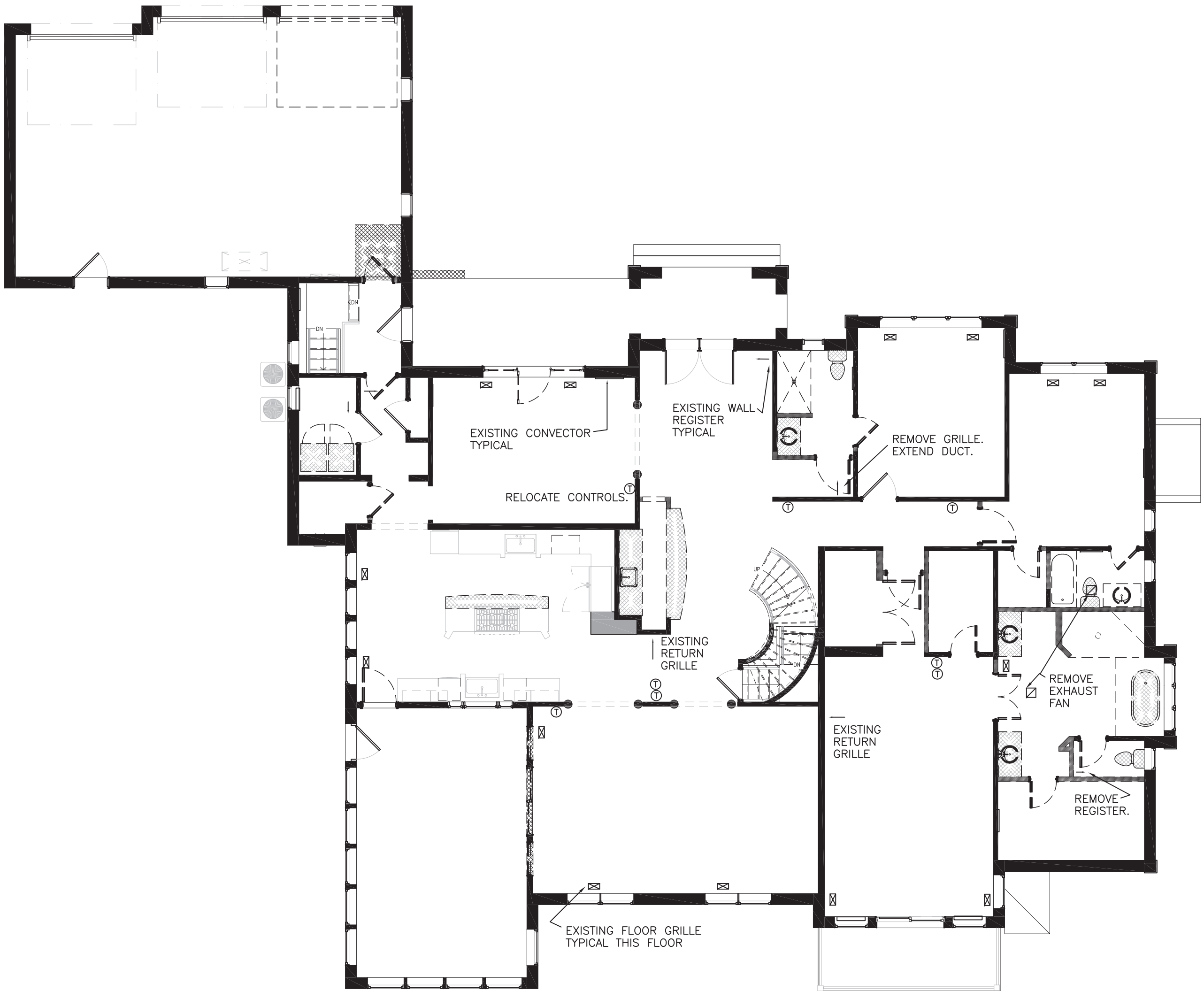
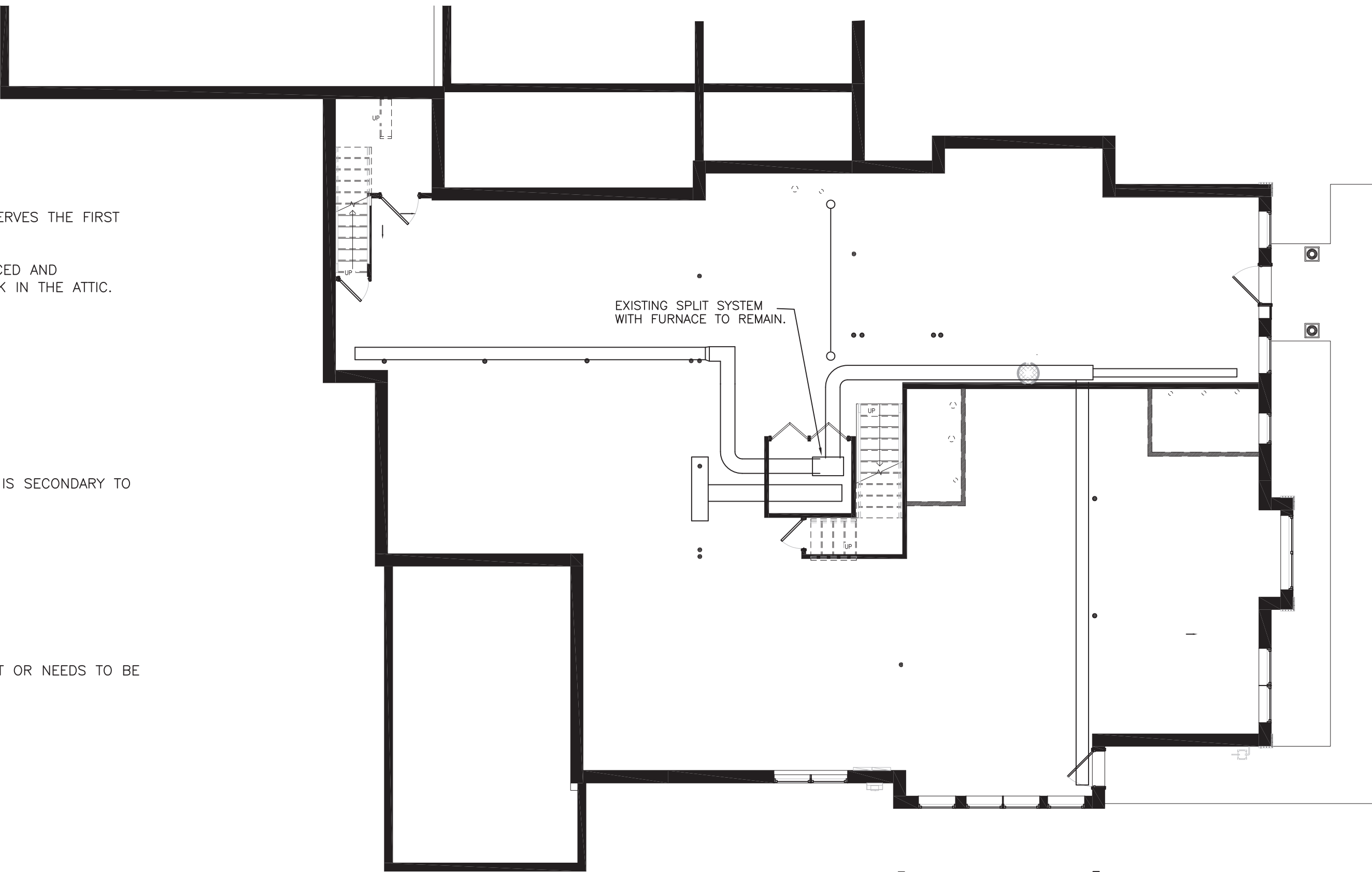


SECOND FLOOR PLAN — REMOVALS
1/8" = 1'-0"



FIRST FLOOR PLAN — REMOVALS
1/8" = 1'-0"



LOWER LEVEL PLAN — REMOVALS
1/8" = 1'-0"

REMOVALS

THE EXISTING DUCTED SPLIT SYSTEM WITH FURNACE (LOCATED IN THE LOWER LEVEL) THAT SERVES THE FIRST FLOOR WILL REMAIN IN PLACE. THE SYSTEM WILL BE REVISE AND EXTENDED.

THE EXISTING DUCTED SPLIT SYSTEM WITH FURNACE (LOCATED IN THE ATTIC) WILL BE REPLACED AND EXTENDED. THE NEW FURNACE LOCATION WILL BE ON THE SECOND FLOOR WITH THE DUCTWORK IN THE ATTIC.

EXISTING HOT WATER HEATING SYSTEM

THE EXISTING HOT WATER HEATING SYSTEM IS TO REMAIN IN PLACE. REVISE CONTROL SO IT IS SECONDARY TO THE CENTRAL AIR HEAT (FURNACE).

DISABLE THE DOMESTIC HOT WATER CONNECTION AND CONTROL.

MARK THE FOLLOWING ITEMS ON THE AS-BUILT SET:

1. VERIFY WHICH CONVECTORS ARE ON WHICH ZONE.
2. DETERMINE EXTENT OF THE IN-FLOOR HEATING.
3. VERIFY WHICH THERMOSTATS SERVE WHICH ZONE.
4. ANY CHANGES TO THE EXISTING SYSTEM DUE TO CONSTRUCTION.

DURING CONSTRUCTION, WORK WITH THE OTHER TRADES TO DETERMINE IF ANY PIPING IS CUT OR NEEDS TO BE DISCONNECTED.

> design team

> interior design:



DESIGN + IMPLEMENTATION GROUP
4770 WHITE PLAINS ROAD
BRONX, NY 10470
718-252-0225

> MEP consultant:

CW ENGINEERING
315 ROCKINGHAM ST.
ROCHESTER, NY 14620
(585) 455-1458

> project information

> owner agency

MONTE NIDO & AFFILIATES
6100 SW 76th STREET
MIAMI, FL 33143

MONTE NIDO - ROCKLAND
290 PHILLIPS HILL ROAD
NEW CITY, NY 10956

> project



revision schedule		
no.	description	date

> drawing information

project #: 22-027
date: 06.28.2022
drawn by: CWE
checked by: CGW
scale: sheet scale 1 inch = 1'-0"

copyright smartDESIGN architecture, pllc © 2022

> sheet name

REMOVALS

M001
sheet number

NOTES - HVAC

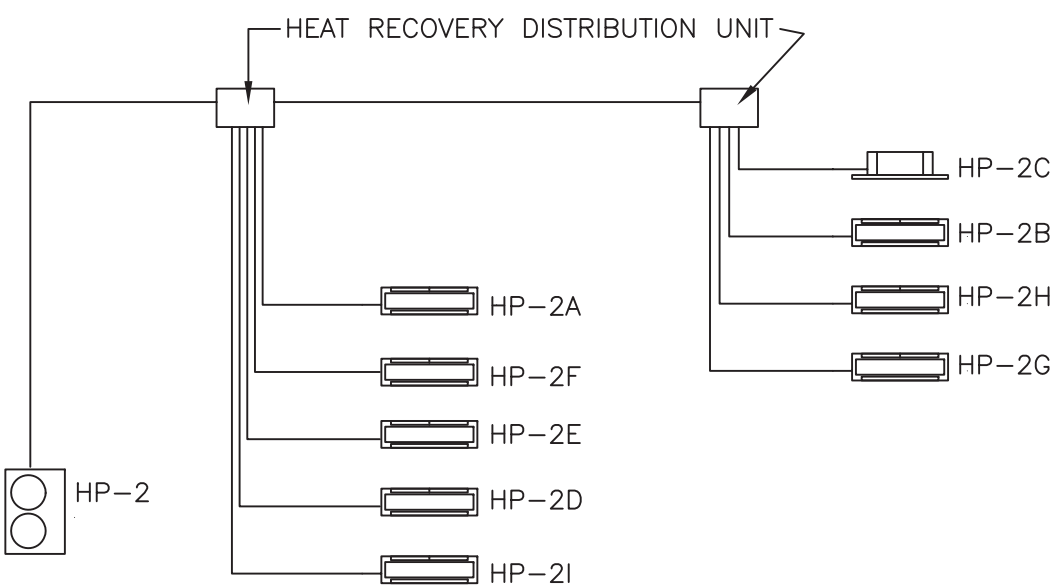
1. INSULATE UNLINED SUPPLY AIR DUCT R-6 MINIMUM. INSULATE OUTSIDE AIR DUCT, LOUVER PLENUMS, AND DUCTS IN ATTIC SPACES R-8 MINIMUM.
2. BALANCE AIR SYSTEMS. BALANCE. SUBMIT COPIES OF START UP AND BALANCE REPORTS TO THE OWNER.
3. PROVIDE OPERATING AND MAINTENANCE LABELS IN ACCORDANCE WITH THE ENERGY CODE.
4. PROVIDE AND INSTALL EQUIPMENT AND DUCT IN ACCORDANCE WITH NEW YORK STATE ENERGY CODE AND MECHANICAL CODE.
5. COORDINATE DUCTWORK WITH OTHER TRADES PRIOR TO INSTALLATION. PROVIDE OFFSETS AND TRANSITIONS.
6. PROVIDE CONDENSATE DRAIN PIPING TO AN INDIRECT DRAIN. COORDINATE WITH PLUMBING.
7. REFRIGERANT PIPING - REFRIGERANT PIPING SHALL BE SIZED BY THE CONDENSING UNIT MANUFACTURER. INSULATE THE ENTIRE SUCTION LINE. PROVIDE FINISH ON EXTERIOR INSULATION. INSTALL EXPOSED PIPING NEATLY AND PLUMB TO THE BUILDING. PROVIDE SUPPORTS
8. INSTALL ALL EQUIPMENT IN ACCORDANCE WITH THE MANUFACTURER'S INSTRUCTIONS.
9. PROVIDE OPERATION AND MAINTENANCE INFORMATION TO THE OWNER. PROVIDE AS-BUILT DOCUMENTATION TO THE OWNER.
10. PROVIDE SUPPORTS FOR PIPING. SUPPORT STRAPS FOR TUBING. HANGERS FOR SUSPENDED AND SLOPED PIPING.

DUCTWORK

DUCTWORK SHALL BE GALVANIZED STEEL CONSTRUCTED IN ACCORDANCE WITH SMACNA 1" PRESSURE CLASS AND C SEAL CLASS. IN ADDITION ALL SEAMS AND JOINTS SHALL BE SEALED IN ACCORDANCE WITH THE ENERGY CODE. ROUND DUCT SHALL BE SPIRAL.

FABRICATE DUCTS IN ACCORDANCE WITH SMACNA HVAC DUCT CONSTRUCTION STANDARDS.
INSTALL AND SUPPORT DUCTS IN ACCORDANCE WITH SMACNA HVAC DUCT CONSTRUCTION STANDARDS.

PROVIDE RADIUS DUCT ELBOWS. IF USED, PROVIDE TURNING VANES IN ALL MITERED ELBOWS. PROVIDE A VOLUME DAMPER IN EACH BRANCH TO SUPPLY OUTLETS (EXCEPT WHERE DAMPERS ARE SHOWN AT THE DIFFUSERS, VENTILATION AIR OUTLETS (INSTALL WHERE SHOWN) AND TO EXHAUST GRILLES. ALL DUCT BRANCHES SHALL BE 45 DEG. TAP TYPE. BRANCHES TO DIFFUSERS AND GRILLES SHALL BE THE SIZE OF THE DIFFUSER NECK UNLESS OTHERWISE NOTED.



VRF SCHEMATIC
NOT TO SCALE

HP-2 - VRF HEAT RECOVERY
PROVIDE COMPLETE SYSTEM.
COOLING - 60MBH
HEATING - 64MBH
240V, 1PH
LG ARUB060GSS4
REMOTE CONTROLLER - LG PREMTBVC2

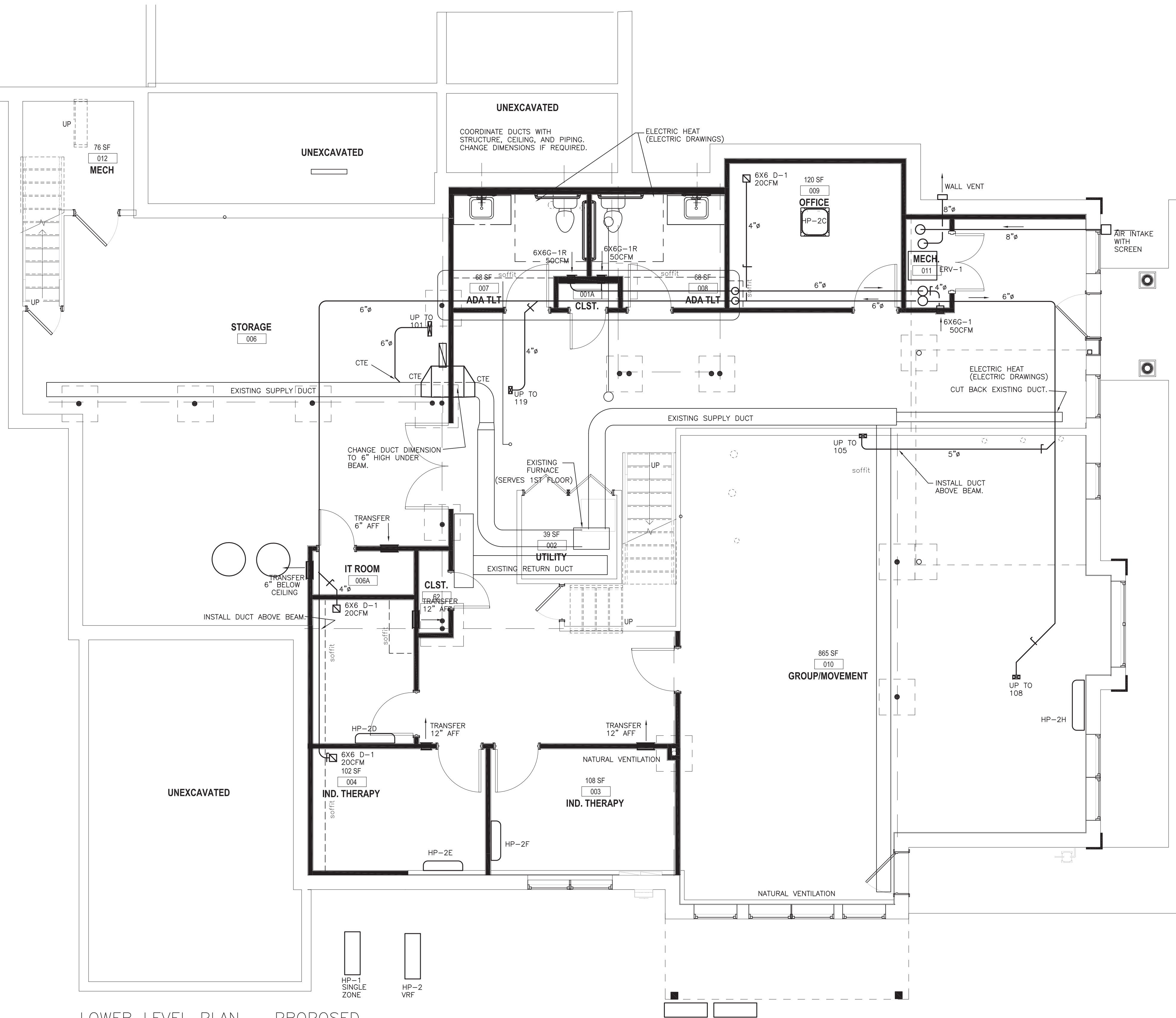
INDOOR UNITS
HP-2A WALL MOUNT, COOLING 5.5MBH, HEATING 6.1MBH, LG ARNU053SJA4
HP-2B WALL MOUNT, COOLING 5.5MBH, HEATING 6.1MBH, LG ARNU053SJA4
HP-2C RECESSED CEILING, COOLING 5.5MBH, HEATING 6.1MBH, LG ARNU053TRD4
HP-2D WALL MOUNT, COOLING 5.5MBH, HEATING 6.1MBH, LG ARNU053SJA4
HP-2E WALL MOUNT, COOLING 5.5MBH, HEATING 6.1MBH, LG ARNU053SJA4
HP-2F WALL MOUNT, COOLING 5.5MBH, HEATING 6.1MBH, LG ARNU053SJA4
HP-2G WALL MOUNT, COOLING 9.6MBH, HEATING 10.9MBH, LG ARNU093SJA4
HP-2H WALL MOUNT, COOLING 15.4MBH, HEATING 17.1MBH, LG ARNU153SJA4
HP-2I WALL MOUNT, COOLING 7.5MBH, HEATING 8.5MBH, LG ARNU073SJA4

HEAT PUMP VRF SYSTEMS
PROVIDE COMPLETE SUBMITTAL INCLUDING CONTROLS.
INSULATE PIPING.
PROVIDE VINYL FINISH COATING FOR EXPOSED OUTSIDE INSULATION.
INSTALL PIPING NEAT AND PLUMB.
PROVIDE CONDENSATE DRAIN PIPING.
PROVIDE CONDENSATE DRAIN TRAP IN ACCORDANCE WITH MANUFACTURER'S INSTRUCTIONS.
WALL MOUNTED UNITS - PROVIDE CHECK VALVE IN THE DRAIN LINE.
PROVIDE INTERNAL CONDENSATE PUMP WHERE REQUIRED.
INSTALL HEAT PUMPS A MINIMUM OF 12" ABOVE THE GROUND.
PROVIDE LISTED CABLE CONTROL.
CONCEAL EXTERIOR AND REFRIGERANT PIPING WHERE POSSIBLE. PROVIDE LINE SET COVERS FOR PIPING EXTERIOR AND INTERIOR THAT CAN NOT BE CONCEALED OTHERWISE.
RECTORSAL OR EQUAL. COLOR TO BE SELECTED BY THE ARCHITECT/OWNER.
SEAL/CAULK PENETRATIONS OF EXTERIOR WALLS.
PROVIDE NEAT FINISH FOR ANY EXPOSED PENETRATIONS.

PROVIDE COMPLETE CONTROL.
PROVIDE COMPLETE SET UP AND PROGRAMING.

LOWER LEVEL PLAN - PROPOSED

1/4" = 1'-0"



DESIGN CRITERIA	
CLIMATE ZONE	5A
HEATING OUTSIDE AIR TEMPERATURE DESIGN SETPOINT	12 DB / 72
COOLING OUTSIDE AIR TEMPERATURE DESIGN SETPOINT	87 DB / 72 WB
(TEMPERATURE - DEGREES F)	

> design team

> interior design:



DESIGN + IMPLEMENTATION GROUP
4770 WHITE PLAINS ROAD
BRONX, NY 10470
718-252-0225

> MEP consultant:

CW ENGINEERING
315 ROCKINGHAM ST.
ROCHESTER, NY 14620
(585) 455-1458

> project information

> owner agency

MONTE NIDO & AFFILIATES
6100 SW 76th STREET
MIAMI, FL 33143

MONTE NIDO - ROCKLAND
290 PHILLIPS HILL ROAD
NEW CITY, NY 10956

> project



revision schedule		
no.	description	date

> drawing information

project #: 22-027
date: 06.28.2022
drawn by: CWE
checked by: CGW
scale: sheet scale 1 inch = 1'-0"

copyright smartDESIGN architecture, pllc © 2022

> sheet name

LOWER LEVEL

M101
sheet number

> design team

> interior design:



DESIGN + IMPLEMENTATION GROUP
4770 WHITE PLAINS ROAD
BRONX, NY 10470
716-252-0225

> MEP consultant:

CW ENGINEERING
315 ROCKINGHAM ST.
ROCHESTER, NY 14620
(585) 455-1458

> project information

> owner agency

MONTENIDO & AFFILIATES
6100 SW 76th STREET
MIAMI, FL 33143

MONTENIDO - ROCKLAND
290 PHILLIPS HILL ROAD
NEW CITY, NY 10956

> project



revision schedule		
no.	description	date

> drawing information

project #: 22-027
date: 06.28.2022
drawn by: CWE
checked by: CGW
scale: sheet scale 1 inch = 1'-0"

copyright smartDESIGN architecture, pllc © 2022

> sheet name

FIRST FLOOR

M102
sheet number

EQUIPMENT - HVAC

DIFFUSER AND GRILLES

D-1 SUPPLY GRILLE, 1 WAY, KRUEGER 180
D-2 SUPPLY GRILLE, 2 WAY, KRUEGER 180
G-1 GRILLE - RETURN LOUVERED SURFACE, KRUEGER S80
G-1R GRILLE - RETURN LOUVERED SURFACE, OPPOSED BLADE DAMPER, KRUEGER S80
G-2 SUPPLY GRILLE, HORIZONTAL LOUVERED, KRUEGER 80
R-1 SUPPLY HEAVY DUTY FLOOR REGISTER, LIMA 850

EF-1 - CEILING EXHAUST FAN WITH GRILLE
70 CFM @ .25"
115V, EC MOTOR
1 SONE
GREENHECK SP-A90

EF-2 - CEILING EXHAUST FAN WITH GRILLE
50 CFM @ .35"
115V, EC MOTOR
<1 SONE
BROAN AE80

ERV-1 - PACKAGED HEAT EXCHANGER WITH FANS
EXHAUST - 150 CFM @ .6"
OUTSIDE AIR - 150 CFM @ 0.6"
120V ECM
RENEWAIRE EV PREMIUM L
PROVIDE 2" PLEATED DISPOSABLE FILTERS.
PROVIDE EXHAUST BACKDRAFT DAMPER.
PROVIDE TIMER CONTROLLER - WALL MOUNT.
LOW LEAKAGE (CLASS 1) DAMPER OA WITH OPERATOR AND CONTROL.

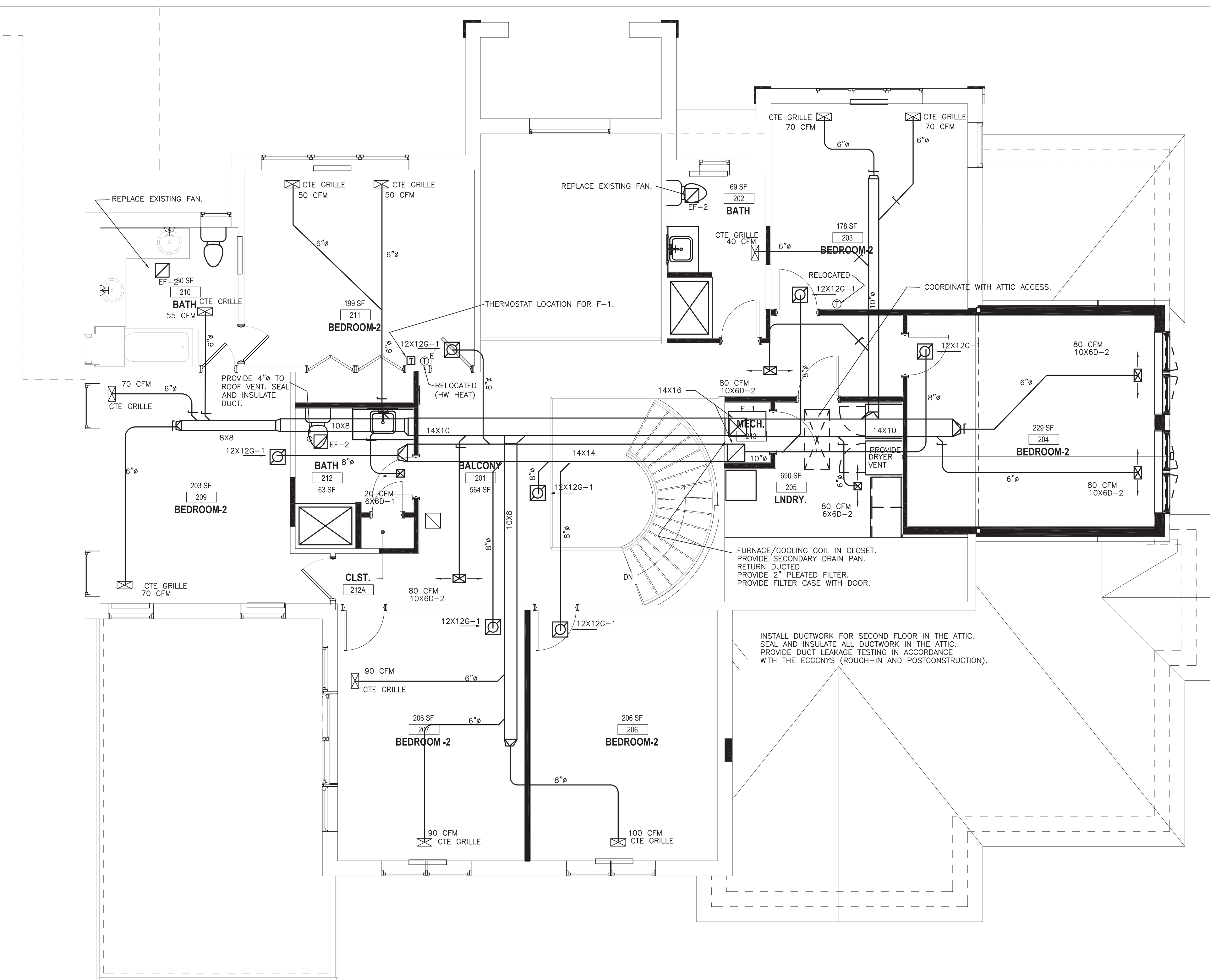
SPLIT SYSTEM - COOLING WITH FURNACE
ACCESSORIES FOR LONG LINE APPLICATION WHERE REQUIRED.
REFRIGERANT PIPING - REFRIGERANT PIPING SHALL BE SIZED BY THE CONDENSING UNIT MANUFACTURER.
INSULATE THE ENTIRE SUCTION LINE. PROVIDE FINISH ON EXTERIOR INSULATION. INSTALL EXPOSED PIPING NEATLY AND PLUMB TO THE BUILDING. PROVIDE SUPPORTS.
PROVIDE FURNACE VENTS IN ACCORDANCE WITH THE MANUFACTURER'S INSTRUCTIONS.

F-1 - FURNACE - DIRECT VENT HIGH EFFICIENCY WITH COOLING COIL
80 MBH TWO STAGE INPUT, 96% MINIMUM NATURAL GAS
1,200 CFM @ .5" ESP PLUS COIL PRESSURE DROP
115V ECM
COIL - 4 TON, R-410A, CASED
PROVIDE CONDENSATE NEUTRALIZER.
2" PLEATED FILTER
CU-1 - CONDENSING UNIT
4 TON, 14 SEER, R-410A
TWO STAGE
SEER 15 MIN.
208/230V, 1PH
YORK, CARRIER

HEAT PUMP SPLIT SYSTEMS - TYPICAL
PROVIDE COMPLETE SUBMITTAL INCLUDING CONTROLS.
INSULATE PIPING.
PROVIDE VINYL FINISH COATING FOR EXPOSED OUTSIDE INSULATION.
INSTALL PIPING NEAT AND PLUMB.
PROVIDE CONDENSATE DRAIN PIPING.
PROVIDE CONDENSATE DRAIN TRAP IN ACCORDANCE WITH MANUFACTURER'S INSTRUCTIONS. WALL MOUNTED UNITS - PROVIDE CHECK VALVE IN THE DRAIN LINE.
INSTALL HEAT PUMPS A MINIMUM OF 12" ABOVE THE GROUND.
PROVIDE INTERNAL CONDENSATE PUMP WHERE REQUIRED.
PROVIDE LISTED CABLE FOR POWER/CONTROL BETWEEN THE OUTDOOR UNIT AND THE INDOOR UNIT.
CONCEAL EXTERIOR AND REFRIGERANT PIPING WHERE POSSIBLE. PROVIDE LINE SET COVERS FOR PIPING EXTERIOR AND INTERIOR THAT CAN NOT BE CONCEALED OTHERWISE. RECTORSEAL OR EQUAL. COLOR TO BE SELECTED BY THE ARCHITECT/OWNER.
SEAL/CAULK PENETRATIONS OF EXTERIOR WALLS.
PROVIDE NEAT FINISH FOR ANY EXPOSED PENETRATIONS.

HP-1
SPLIT SYSTEM HEAT PUMP
INDOOR UNIT - WALL MOUNT
18,000 BTUH COOLING, SEER 24
21,600 BTUH HEATING, HSPF 13 (HEATING 21,000 @ 6F)
208/230V-1PH
LG LA180HYV3
PROVIDE BASE PAN HEATER.

FIRST FLOOR PLAN - PROPOSED
1/4" = 1'-0"



SECOND FLOOR PLAN — PROPOSED
1/4" = 1'-0"

> design team

> interior design:



DESIGN + IMPLEMENTATION GROUP
4770 WHITE PLAINS ROAD
BRONX, NY 10470
718-252-0225

> MEP consultant:

CW ENGINEERING
315 ROCKINGHAM ST.
ROCHESTER, NY 14620
(585) 455-1458

> project information

> owner agency

MONTE NIDO & AFFILIATES
6100 SW 76th STREET
MIAMI, FL 33143

MONTE NIDO - ROCKLAND
290 PHILLIPS HILL ROAD
NEW CITY, NY 10956

> project



revision schedule		
no.	description	date

> drawing information

project #: 22-027
date: 06.28.2022
drawn by: CWE
checked by: CGW
scale: sheet scale 1 inch = _____

copyright smartDESIGN architecture, pllc © 2022

> sheet name

SECOND FLOOR