

1. DRAWINGS ARE DIAGRAMMATIC AND INDICATE GENERAL ARRANGEMENT OF SYSTEMS AND WORK. FOLLOW DRAWING IN LAYING OUT WORK AND CHECK DRAWINGS OF OTHER TRADES TO VERIFY SPACE CONDITIONS. MAINTAIN HEADROOM AND SPACE CONDITIONS.
2. EXACT LOCATIONS OF ALL PLUMBING FIXTURES, DEVICES, WATER PUMPS, EQUIPMENT, AND ACCESSORIES SHALL BE AS INDICATED ON ARCHITECTURAL AND/OR PLUMBING DRAWINGS. REFER TO PLUMBING DWGS. SHEET "PL 100" FOR DIMENSIONED LOCATIONS.
3. VERIFY LOCATIONS OF FIXTURES, DEVICES, IN FINISHED AREAS WITH ARCHITECTURAL DRAWINGS OF INTERIOR DETAILS AND FINISH. IN CENTERING OUTLETS AND DEVICES. ALLOW FOR OVERHEAT PIPES, DUCTS AND MECHANICAL EQUIPMENTS. VARIATIONS IN FIREPROOFING AND PLASTERING, WINDOW AND DOOR TRIM, PANELING, HUNG CEILINGS AND THE LIKE. CORRECT ANY INACCURACY RESULTING FROM FAILURE TO DO SO WITHOUT EXPENSE TO OWNER.
4. ALL ACCESS DOOR LOCATIONS SHALL BE REVIEWED BY ARCHITECT PRIOR TO INSTALLATION.
5. ALL WORK IS NEW AND WILL BE INSTALLED TO V.A. SPECIFICATIONS AND EXISTING TO BROUGHT UP TO CODE OR OTHERWISE SPECIFIED IN WRITING.
6. ANY ISSUES WITH NEW LOCATIONS TO BE BROUGHT TO ENGINEERING'S ATTENTION VERBALLY AND IN WRITING. ALL FINAL DECISIONS MUST BE APPROVED BY ENGINEERING SERVICE PRIOR TO WORK STARTING.
7. CONTRACTOR SHALL PERFORM ALL PLUMBING IN ACCORDANCE WITH THE LATEST EDITION OF THE NATIONAL PLUMBING CODE, ALL FEDERAL, STATE LOCAL RULES, LAWS, REGULATIONS, VETERANS AFFAIRS (VA) SPECIFICATION.
8. CONTRACTOR SHALL INSTALL "K" COPPER DRAIN, FOR ALL DOMESTIC WATER LINES INSTALLED AS PART OF THIS PROJECT, UNLESS SPECIFICALLY DESIGNATED ELSEWHERE IN THE PLANS, SPECIFICATIONS, OR BY THE CONTRACTING OFFICER.
9. CONTRACTOR SHALL SOLDER USING LEAD FREE SOLDER ONLY.
10. CONTRACTOR SHALL CORE DRILL ANY OPENING THRU CONCRETE WITH DIAMOND CORE DRILL. CONTRACTOR SHALL SUPPLY, PROVIDE AND USE APPROPRIATE WET VACS, DROP CLOTHS, OR ANY OTHER DEVICE TO PROTECT GOVERNMENT PROPERTY DURING THIS OPERATION. THE CONTRACTOR SHALL BE FURTHER ADVISED THAT THIS PROTECTION IS EXTENDED TO THE FLOOR BELOW.
11. CONTRACTOR SHALL INSTALL SLEEVES (BLACK IRON) ON ALL CONCRETE OPENINGS. THIS SLEEVE SHALL BE WIDE ENOUGH SUCH THAT INSULATION WILL BE CONTINUOUS THRU THE SLEEVE.
12. CONTRACTOR SHALL INSULATE ALL HOT WATER, COLD WATER, STEAM, CONDENSATE RETURN, HOT WATER RETURN PIPING, INCLUDING ALL FITTINGS WITH SPECIFIED INSULATION. ELBOWS, TEES, SHALL BE INSULATED WITH PLASTIC COVERS FILLED WITH FIBERGLASS INSULATION. JACKET SHALL BE ASJ, Banded AND STAPLED. EXCEPT AS OTHERWISE NOTED ON THE PLANS AND SPECIFICATIONS.
13. CONTRACTOR SHALL LABEL ALL PIPING TO INDICATE FLOW DIRECTION AND CONTENT.
14. CONTRACTOR SHALL INSTALL 3 PCE FULL PORT BALL VALVES FOR SHUTOFFS.
15. CONTRACTOR SHALL NUMBER AND LABEL ALL VALVES INSTALLED AS PART OF THIS CONTRACT WITH BRASS TAGS. NUMBERS SHALL BE AS DESIGNATED BY THE CONTRACTING OFFICER. CONTRACTOR SHALL SUBMIT TO THE CONTRACTING OFFICER A TYPED LIST (4 COPIES) OF ALL VALVES INSTALLED AS PART OF THIS PROJECT. THIS LIST SHALL BE INCLUSIVE AND INCLUDE, AS A MINIMUM, THE FOLLOWING INFORMATION IN TABULAR FORM: VALVE MARK-LOCATION-SIZE-TYPE-MANUFACTURER-FUNCTION.
16. CONTRACTOR SHALL INSTALL ALL PIPING IN A NEAT, PROFESSIONAL MANNER, INDEPENDENTLY SUPPORTED FROM OTHER UTILITIES.
17. CONTRACTOR SHALL USE EXPANSION BOLTS (DRILLED) ONLY WHEN ANCHORING INTO CONCRETE. USE OF EXPLOSIVE SHOTS ARE PROHIBITED WHEN ANCHORING INTO CONCRETE.
18. CONTRACTOR SHALL SAW CUT ANY INTERIOR OR EXTERIOR CONCRETE OR ASPHALT BEFORE REMOVING SAME.
19. CONTRACTOR SHALL INSTALL KEYLESS SHUTOFF VALVES ON ALL NEW FIXTURES AND TURN OVER TO THE CONTRACTING OFFICER 2 SETS OF KEYS FOR EACH FIXTURE.
20. CONTRACTOR SHALL, PRIOR TO THE INSTALLATION OF ANY FIXTURE, TRIM, CARRIER, SUBMIT FOR APPROVAL, MANUFACTURERS LITERATURE FOR ALL ITEMS.
21. CONTRACTOR SHALL TEST, IN THE PRESENCE OF THE VA CONTRACTING OFFICER, ALL PIPING AND SUBMIT TO THE CONTRACTING OFFICER 4 COPIES OF THE TESTING REPORT. TESTING SHALL BE AS INDICATED IN THE CONTRACT SPECIFICATIONS.
22. CONTRACTOR SHALL SUPPLY AND INSTALL UNIONS ON ALL VALVES, GAUGES, THERMOMETERS, ETC., FOR EASY REMOVAL.
23. CONTRACTOR SHALL INSTALL DIELECTRIC FITTINGS ON ALL DISSIMILAR METALS AND ON ALL FERROUS, NON-FERROUS PIPING.
24. CONTRACTOR SHALL ADVISE THE CONTRACTING OFFICER, IN WRITING A MINIMUM OF 48 HOURS PRIOR TO THE SHUTOFF OF ANY PLUMBING SYSTEM. THE CONTRACTOR SHALL BE ADVISED THAT THE VETERANS AFFAIRS IS RESPONSIBLE FOR OPERATING ANY EXISTING UTILITY VALVE. THE CONTRACTOR SHALL BE RESPONSIBLE TO REPLACE ANY FAILED VALVE AT NO ADDITIONAL COST TO THE GOVERNMENT, SHOULD THE CONTRACTOR EXERCISE VALVES WITHOUT THE PROPER AUTHORIZATION.
25. "THERMO VALVE" INDICATES THERMOSTATIC WATER TEMPERATURE CONTROL VALVE.
26. DRAINS TO CONSIST OF 3/4" GLOBE VALVE WITH HOSE NIPPLE.

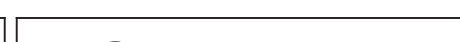
28. INSTALLATION SHALL BE INSTALLED IN STRICT CONFORMITY WITH ALL REQUIREMENTS OF THE NEW YORK CITY PLUMBING CODE AND ALL PERTINENT REFERENCE STANDARDS GOVERNING WATER WORK.
29. WATER INSTALLATION SHALL BE IN STRICT ACCORDANCE WITH THE BUREAU OF WATER SUPPLY REQUIREMENTS INCLUDING THE RPZ INSTALLATION AND FIRE SERVICE ASSEMBLIES.
30. ALL WATER SUPPLIES SHALL BE OVER THE RIM SUPPLY OR SHALL BE PROVIDED WITH APPROVED TYPE VACUUM BREAKERS INCLUDING ALL WATER CLOSET FLUSH VALVES, INCLUDING, HOSE BIBB CONNECTIONS.
31. ALL WATER PIPING SHALL BE SIZED TO PRODUCE VELOCITIES NOT IN EXCESS OF 8 FEET PER SECOND AND SHALL HAVE A MINIMUM OF 20 P. S. I. AT EVERY FIXTURE UNLESS OTHERWISE DIRECTED OR NOTED.
32. EXPANSION LOOPS AND ANCHORS SHALL BE PROVIDED FOR EXPANSION IN HW AND HOT RECIRCULATING PIPING LINES.
33. ALL CONNECTIONS TO EQUIPMENT OF DISSIMILAR MATERIAL SHALL BE PROVIDED WITH DIELECTRIC UNIONS.
34. PROVIDE VALVES ON ALL BRANCH LINES TO EACH FIXTURE AND EQUIPMENT INCLUDING BRANCH FROM MAINS, AND FROM RISERS. ALL RISERS AND MAINS SHALL BE PROVIDED WITH VALVES. ALL EXPOSED VALVES & HANDLES SHALL BE CHROME PLATED.
35. WHERE BRANCH SUPPLIES ARE TRAPPED, AT LOW POINTS, AND WHERE BRANCH OR MAINS SUPPLY FIXTURES OR EQUIPMENT ARE LOCATED HIGHER THAN SUPPLY MAIN, PROVIDE DRAIN BIBBS ON LINE.
36. PRESSURE REDUCING VALVES SHALL BE PROVIDED ON ALL WATER LINES WHERE THE PRESSURE EXCEEDS 85 P.S.I. TENANT FOR EACH RETAIL SPACES SHALL PROVIDE THEIR OWN PRV ASSEMBLY TO SUIT.
37. ALL VALVES, SHOCK ABSORBERS, EXPANSION LOOPS AND OTHER ITEMS CONCEALED SHALL BE PROVIDED WITH ACCESS DOORS FOR ACCESSIBILITY FOR SAME.
38. FOR ALL EQUIPMENT AND FIXTURES FURNISHED BY OTHERS, THIS CONTRACTOR SHALL VERIFY EXACT LOCATION AND PIPE SIZES PRIOR TO FABRICATION OR INSTALLATION OF SAME.
39. ALL WATER BRANCHES SHALL BE OFFSET SUFFICIENTLY TO CLEAR ALL RECESSED CABINETS AND EQUIPMENT LOCATED IN PARTITIONS.
40. BACKFLOW PREVENTION SHALL BE INSTALLED IN STRICT ACCORDANCE WITH THE NYS CROSS CONNECTION CONTROL.
41. IF A PIPE IS NOT SIZED REFER TO FLOOR PLANS OR SIMILAR PIPING FOR PIPE SIZES.

ABV.	-	ABOVE
ADO	-	AUTOMATIC DOOR OPENER
A/C	-	AIR CONDITIONING
A.C.T	-	ACOUSTICAL CEILING TILE
A.F.	-	AMPERE FRAME
A.F.F.	-	ABOVE FINISHED FLOOR
A.H.U.	-	AIR HANDLING UNIT
AL/ALUM.	-	ALUMINUM
APPROX.	-	APPROXIMATE
AR	-	ACID RESISTANT
ASSY	-	ASSEMBLY
AT	-	AMPERE TRIP
ATS	-	AUTOMATIC TRANSFER SWITCH
AVG.	-	AVERAGE
BC	-	BARE COPPER
BRIP	-	BOILER PLANT INSTRUMENTATION PANEL
BFP	-	BACK FLOW PREVENTER
BLDG	-	BUILDING
BWV	-	BACK WATER VALVE
C	-	CONDUIT
CA	-	COMPRESSED AIR
CCTV	-	CLOSED CIRCUIT T.V.
CB, C/B	-	CIRCUIT BREAKER
CFS	-	CUBIC FEET PER SECOND
CI	-	CAST IRON
CRKT	-	CIRCUIT
C.L.G	-	CEILING
C.M.U.	-	CONCRETE MASONRY UNIT
CO	-	CLEAN OUT
CONN	-	CONNECTION
CONT	-	CONTINUED
CW	-	COLD WATER
CWR	-	COLD WATER RETURN
DB	-	DIRECT BURIAL
DF	-	DRINKING FOUNTAIN
DN	-	DOWN SPOUT NOZZLE
DROP	-	PIPING BETWEEN FLOORS
DS	-	DOWN SPOUT
DU	-	DENTAL UNIT
DW	-	DISH WASHER
DWG.	-	DRAWING
DWTR	-	DUMB WATER
ED	-	EMPTY CONDUIT
FD	-	FLOOR DRAIN
EEW	-	EMERGENCY EYE WASH
EJ	-	EQUIPMENT GROUND
EG	-	EXPANSION JOINT
ELEC.	-	ELECTRIC
ELEV.	-	ELEVATOR
EMERG	-	EMERGENCY
EQPM	-	EQUIPMENT
EXP, XP	-	EXPANSION PROOF
EXT.	-	EXTERIOR
EXTG	-	EXISTING
EW	-	ELECTRIC WATER COOLER
FA	-	FIRE ALARM
FACP	-	FIRE ALARM CONTROL PANEL
FCU	-	FAN COIL UNIT
FDO	-	FLOOR DRAIN
FF	-	FINISH FLOOR
FR	-	FIRE HOSE & RACK
FI	-	FILM ILLUSTRATOR
FIXT	-	FIXTURE
FL	-	FLOOR
FLUOR	-	FLUORESCENT
FR	-	FIRE RISER
FSCP	-	FLAME SAFEGUARD
FSS	-	CONTROL SWITCH
FSS	-	FUSED SAFETY SWITCH
G	-	GAS
GEN.	-	GENERATOR
GFI	-	GROUND FAULT INTERUPTER
GND	-	GROUND
GPH	-	GALLONS PER HOUR
GPM	-	GALLONS PER MINUTE
GTB	-	GROUND TERMINAL
BOX	-	
GYP	-	GYPSUM
G.W.B.	-	GYPSUM WALL BOARD
HACR	-	HEATING AIR CONDITION REFRIGERATION
HB	-	HOSE BIBB
HQ	-	HANDHOLE
HMA	-	HOLLOW METAL
HO	-	HAND OFF

AVAC	-	VENTILATION, & AIR	W	-	WITH
HW	-	HOT WATER	WCO	-	WATER CLOSET
HWR	-	HOT WATER RETURN	WH	-	WALL CLEAN OUT
HWRC	-	HOT WATER RETURN CIRCULATION	WHA	-	WALL HYDRANT WATER HAMMER ARRESTER
IN	-	INCH	WM	-	WIRE MESH
INV EL	-	INVERT ELEVATION	WP	-	WASTE PIPE
IW	-	ICE WATER	WT	-	WATER TIGHT
IWR	-	ICE WATER RETURN	XFMR	-	TRANSFORMER
INCAND	-	INCANDESCENT			
INTR	-	INTERIOR			
JB	-	JUNCTION BOX			
LAV	-	LAVATORY			
LTCP	-	LOCAL TEMPERATURE CONTROL PANEL			
LTG	-	LIGHTING			
LTS	-	LIGHTS			
LV	-	LOW VOLTAGE			
MATV	-	MASTER ANTENNA TELEVISION			
MCB	-	MAIN CIRCUIT BREAKER			
MCC	-	MOTOR CONTROL CENTER			
MDP	-	MAIN DISTRIBUTION PANEL			
MLO	-	MAIN LUGS ONLY			
MH	-	MANHOLE			
MIN	-	MINIMUM			
MO	-	MASONRY OPENING			
MTD	-	MOUNTED			
MTG HT	-	MOUNTING HEIGHT			
N	-	NORTH			
N/A	-	NOT APPLICABLE			
NC	-	NEW CONNECTION			
NFSS	-	NON-FUSED SAFETY SWITCH			
NIC	-	NOT IN CONTRACT			
NL	-	NON-CONTROLLED 24HR LIGHT			
NUMB	-	NUMBER			
NTS	-	NOT TO SCALE			
OPP	-	OPPOSITE			
P	-	POLE			
PB	-	PULL BOX			
PBPU	-	PREFABRICATED BEDSIDE PATIENT POWER UNIT			
PIV	-	PREVENTATIVE INFUX VALVE			
PLBG	-	PLUMBING			
PNL	-	PANEL			
POD	-	POWER OPERATED			
PRV	-	PRESSURE REDUCING VALVE			
PS	-	PIPE SLEEVE			
PTRV	-	POWER TYPE ROOF VENTILATION			
PWR	-	POWER			
RECEPT	-	RECEPTACLE			
RGIP	-	REMOTE GROUND INDICATOR PANEL			
RD	-	ROOF DRAIN			
RISE	-	PIPE RISE BETWEEN FLOORS			
RM	-	ROOM			
RPZ	-	REDUCE PRESSURE ZONE			
S	-	SANITARY			
SC	-	SHOWER CURTAIN			
SH	-	SHOWER HEAD			
SHR	-	SHOWER			
SIG	-	SIGNAL			
SP	-	SOIL PIPE			
SS	-	SAFETY SWITCH			
STA	-	STATION			
SQ.FT	-	SQUARE FEET			
TC	-	TERRA COTTA			
TMV	-	THERMOSTATIC MIXING VALVE			
TH/THK.	-	THICKNESS			
TW	-	TEMPERED WATER			
TWRC	-	RETURN TEMPERED WATER CIRCULATION			
TYP	-	TYPICAL			
UH	-	UNIT HEATER			
UON	-	UNLESS OTHERWISE NOTED			
UR	-	URINAL			
V	-	VENT			
VB	-	VACUUM BREAKER			
VCT	-	VINYL COMPOSITE TILE			
VENT	-	VENTILATION			
VEST	-	VESTIBULE			
VIF	-	VERIFY IN FIELD			

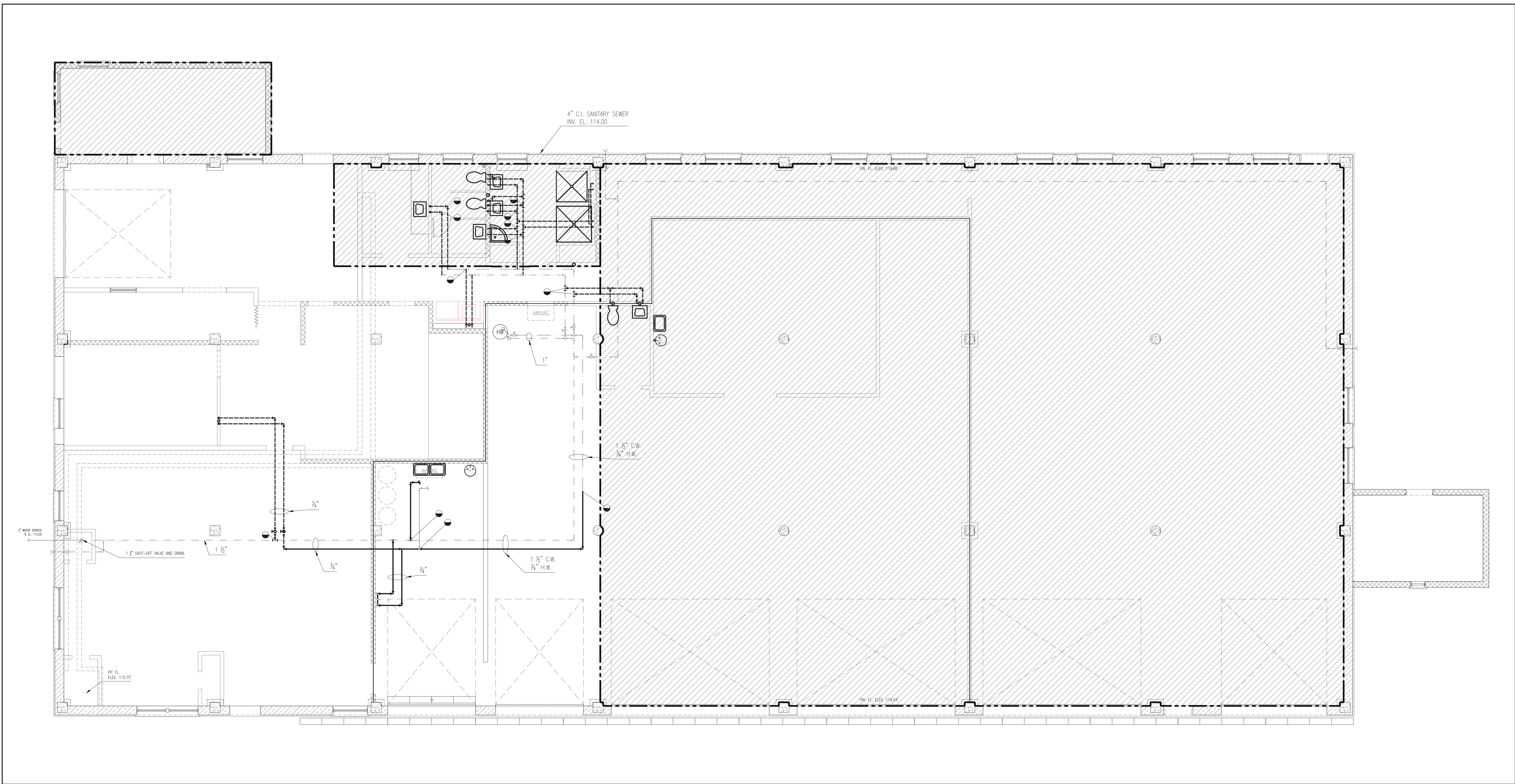
	WASTE, SOIL PIPE
	VENT PIPE
	DROP IN WP OR SP
	RUNNING TRAP
	CLEAN OUT (IN FLOOR)
	CLEAN OUT (IN PIPE)
	REFRIGERANT PIPING
	INCREASER OR REDUCER
	PLUGGED INLET
	BACK FLOW VALVE
	DOMESTIC COLD WATER
	DOMESTIC HOT WATER
	DOMESTIC HOT WATER CIRCULATION
	NATURAL GAS
	ICE WATER
	ICE WATER RETURN
	COMPRESSED AIR
	ANCHOR
	RISE OR DROP IN STEAM PIPING
	STRAINER, STRAINER WITH BLOW-OFF VALVE
	GATE VALVE
	GLOBE VALVE
	CHECK VALVE
	PRESSURE REDUCING VALVE AND BYPASS
	AUTOMATIC ZONE CONTROL VALVE AND BYPASS
	THERMOSTATIC STEAM TRAP
	FLOAT AND THERMOSTATIC STEAM TRAP
	TWO-WAY TEMPERATURE CONTROL (MODULATING) VALVE
	THERMOMETER
	PRESSURE GAUGE WITH NEEDLE VALVE COCK
	DISCONNECTION POINT
	NEW CONNECTION POINT
	CARBON MONOXIDE GAS SENSOR
	CARBON DIOXIDE GAS SENSOR
	SMOKE DETECTOR
	AUTOMATIC ELECTRICAL OPERATING DAMPER
	PRESSURE GAUGE
	VOLUME DAMPER
	THERMOSTAT - ELECTRIC (24V) - NON-PROGRAMMABLE
	THERMOSTAT - 7 DAY PROGRAMMABLE
	TEMPERATURE SENSOR
	SPACE HUMIDISTAT
	SPACE HUMIDITY SENSOR
	UNIT CONTROL SYSTEM PILOT
	LOW/HIGH LIMIT DUCT THERMOSTAT
	PRESSURE SENSOR SWITCH HIGH
	PRESSURE SENSOR SWITCH LOW



		CONSULTANTS:	ARCHITECT/ENGINEERS:	NORTH: 	APPROVED:	APPROVED:	Drawing Title Plumbing Notes, Abbrev., & Symbols Legend Ground Floor Scale: As Noted	Project Title			Project Number 620-20-206	Engineering Service		
					APPROVED:	APPROVED:		Firehouse Enhancement			Building(s) Number 019			
Bid Documents							APPROVED:	APPROVED:	Approved: Facility Director , VAHVHCS:	Location			Drawing Number	
100% Working Drawing Submission	08-16-2021								Approved: John Cliffe, Facility Chief of Engineering	Montrose, New York			PI 000 Dwg 50 of 61	
95% Working Drawing Submission	05-21-2021									Date	Checked			Drawn
85% Working Drawing Submission	02-26-2021									08-30-2021	LS			AMI
35% Working Drawing Submission	06-25-2021													
100% Preliminary Design	10-05-2018													
Revisions:	Date:													

Department of Veterans Affairs	
--------------------------------	--

three inches = one foot
one and one half inches = one foot
one inch = one foot
three quarters inch = one foot
one half inch = one foot
three eighths inch = one foot
one quarter inch = one foot
one eighth inch = one foot



EXISTING DOMW DEMOLITION PLAN
SCALE: 3/16" = 1'-0"

- DEMOLITION NOTES:**
- 17. EXISTING UTILITY SINK AND ALL ASSOCIATED PIPING TO BE DEMOLISHED. CAP PIPING WHERE NECESSARY. FIELD VERIFY THESE LOCATIONS.
 - 18. REMOVE EXISTING SANITARY FIXTURES AND ASSOCIATE PIPING. CAP PIPING WHERE NECESSARY. VERIFY THESE LOCATIONS.
 - 23. PREPARE ALL SURFACES REMAINED FOR PATCHING AND PAINTING.
 - 24. REMOVE ALL DESIGNATED DOORS AND FRAMES. SIZES WILL VARY.
 - 25. DEMOLISH EXISTING SLIDING ACCORDIAN DOOR AND TRACK.
 - 26. REMOVE ALL FLOORING TO EXISTING CONCRETE SLAB. CLEAN AND SCARIFY, IF NECESSARY, ALL FLOORS TO REMOVE DIRT, GREASE, GLUE, ADHESIVE, OR RESIDUE THAT MAY PREVENT PROPER ADHESION OF NEW FLOORING.
 - 37. REMOVE AND TURN OVER EXISTING EMERGENCY EYE WASH FOR SHOPS TO RELOCATE AND INSTALL. ALL ASSOCIATED PIPING TO BE REMOVED. CUT AND CAP AS SOURCE.



KEY PLAN

		CONSULTANTS:		ARCHITECT/ENGINEERS:		NORTH:		APPROVED:		APPROVED:		Drawing Title		Project Title		Project Number		<div>Engineering Service</div> <div>Department of Veterans Affairs</div>	
												Existing DOMW Demolition Plan Ground Floor Scale: As Noted		Firehouse Enhancement		620-20-100			
Bid Documents		08-17-2021						APPROVED:		APPROVED:						Building(s) Number			
100% Working Drawing Submission		08-16-2021										Approved: Facility Director , VAHVCS:		Location		019			
95% Working Drawing Submission		05-21-2021						APPROVED:		APPROVED:				Montrose, New York		Drawing Number			
65% Working Drawing Submission		02-26-2021										Approved: John Cliffe, Facility Chief of Engineering		Date		Checked		Drawn	
35% Working Drawing Submission		06-25-2018						APPROVED:		APPROVED:				08-30-2021		LS		AMI	
100% Preliminary Design		10-07-2017																PD 101	
Revisions:		Date:																Dwg 52 of 61	

Engineering Service

Department of Veterans Affairs

three inches = one foot
one and one half inches = one foot
one inch = one foot
three quarters inch = one foot
one half inch = one foot
three eighths inch = one foot
one quarter inch = one foot
one eighth inch = one foot

HANGER SUPPORTS.

HANGER INSERTS IN SLAB.
SLAB THICKNESS 4" PIPES LESS THAN 4" DIA.
SLAB THICKNESS 6" PIPES 4" DIA AND LARGER.

HANGER INSERTS IN RIBS.
PIPS LESS THAN 4" DIA.

TYPES OF CONSTRUCTION FOR PIPE HANGER INSERTS.
NOT TO SCALE.

TRAPEZE HANGER.

TYPICAL WALL BRACKET.

HANGER NO. 1. HANGER NO. 2. HANGER NO. 3.
NOTE: TYPES 1, 2 AND 3 NOT TO BE USED FOR PIPES 3/4" LARGER THAN 3/8"

HANGER NO. 4.
NOTE: TYPE 4 NOT TO BE USED FOR PIPES 3/4" LARGER THAN 3/8"

VENT PIPES THRU ROOF.

PIPE THRU EXTERIOR WALL.
INTERIOR CONNECTION ABOVE FLOOR.
EXTERIOR CONNECTION BELOW GRADE.

DETAILS OF FLASHING CONNECTIONS & SLEEVEING.
NOT TO SCALE.

HOT WATER STORAGE HEATER.

RANGE BOILER AND HEATER.

LOCATION OF CONNECTIONS TO WATER HEATERS.
NOT TO SCALE.

CAST IRON SOIL PIPE.

STEEL PIPE.

"P" TRAP OR RUNNING TRAP ABOVE CEILING.
DETAILS OF CLEANOUTS.
NOT TO SCALE.

ANCHOR FOR COLD WATER SERVICE PIPE.

DIAGRAM OF PIPING CONNECTIONS FOR DRINKING WATER CIRCULATING SYSTEM.
NOT TO SCALE.

DETAIL "A".
WASTE CONNECTION FOR FUTURE FIXTURES WHERE INDICATED.

AIR BREAK IN WASTE CONNECTION.

HOSE CONNECTION DIAGRAM.

CONNECTIONS AT GREASE TRAP.
NOT TO SCALE.

EXISTING GUTTER DRAIN
SCALE: 3/16" = 1'-0"

KEY PLAN

CONSULTANTS:

Bid Documents	08-17-2021
100% Working Drawing Submission	08-16-2021
95% Working Drawing Submission	05-21-2021
65% Working Drawing Submission	02-26-2021
35% Working Drawing Submission	08-25-2018
100% Preliminary Design	10-05-2017
Revisions:	Date:

ARCHITECT/ENGINEERS:

APPROVED:	APPROVED:
APPROVED:	APPROVED:
APPROVED:	APPROVED:
APPROVED:	APPROVED:

NORTH:

Drawing Title
Existing Plumbing Details
Demolition
Ground Floor
Scale: As Noted

Project Title
Firehouse Enhancement

Location
Montrose, New York

Date
08-30-2021

Checked
LS

Drawn
AMI

Project Number
620-20-100

Building(s) Number
019

Drawing Number
PD 500

Dwg 53 of 61

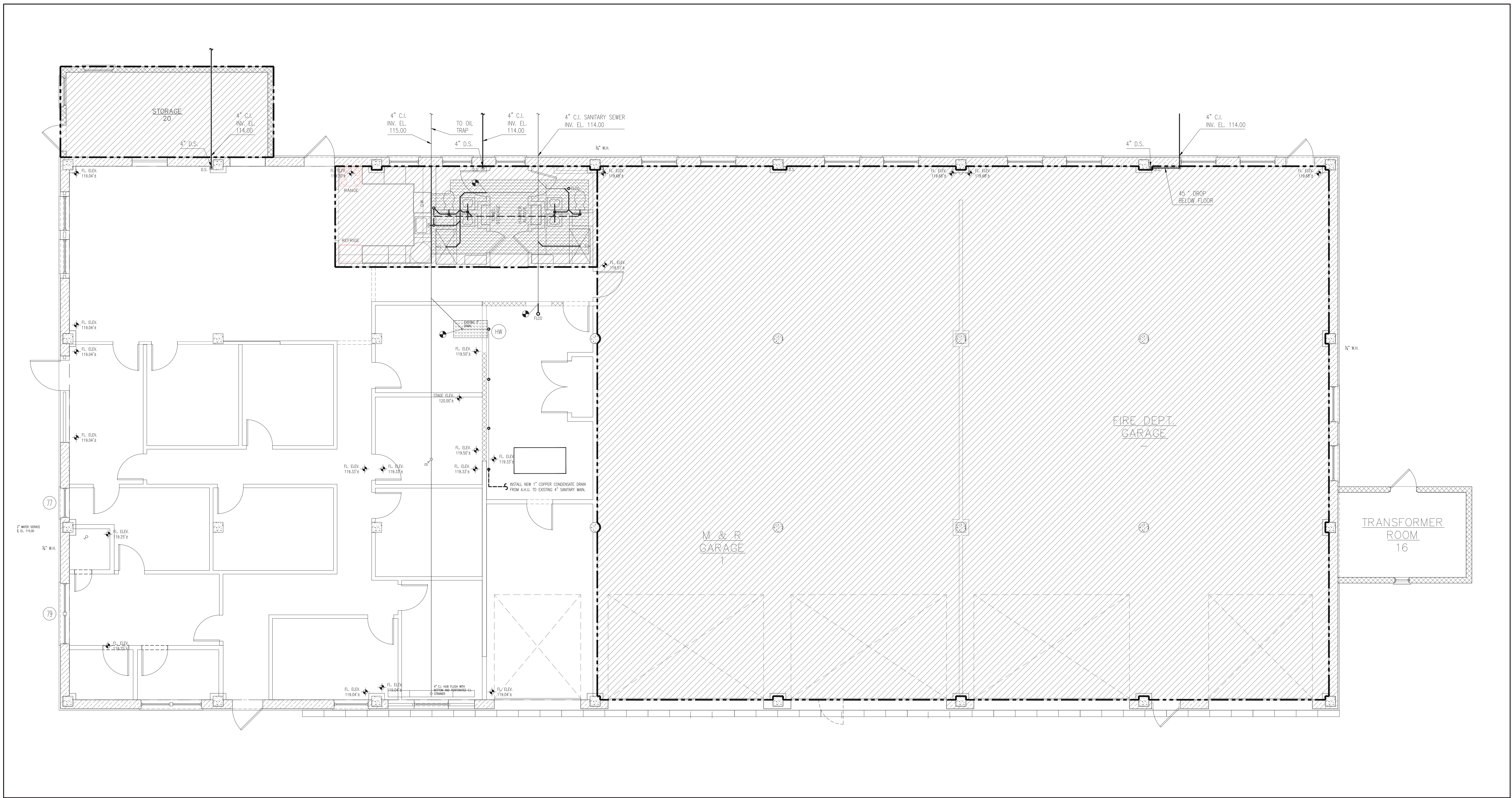
Engineering Service

Department of Veterans Affairs

"FOR REFERENCE ONLY"

Bid Documents Submission PD 500

three inches = one foot
one and one half inches = one foot
one inch = one foot
three quarters inch = one foot
one half inch = one foot
three eighths inch = one foot
one quarter inch = one foot
one eighth inch = one foot



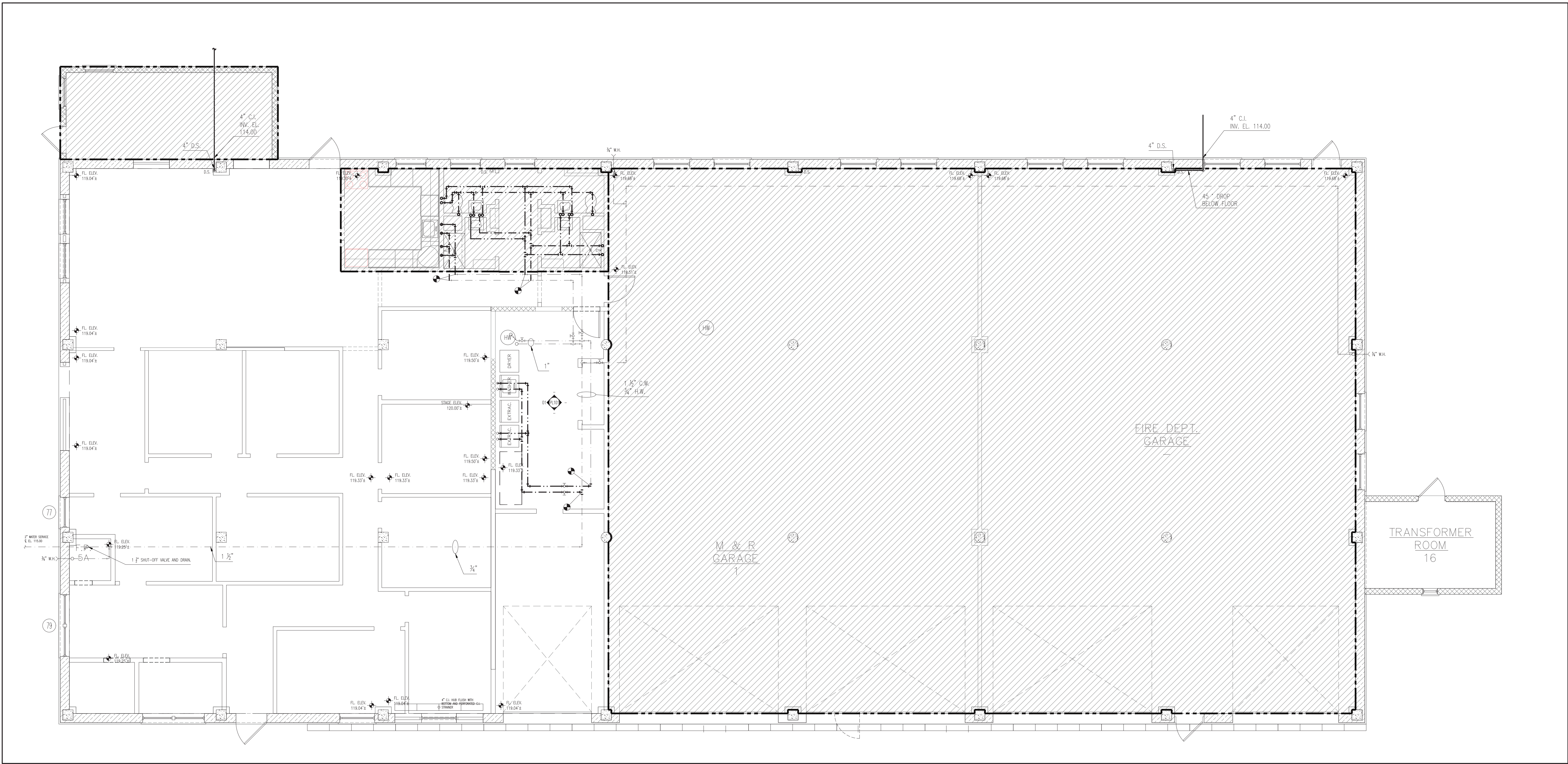
NEW SANITARY PLUMBING PLAN
SCALE: 3/16" = 1'-0"



KEY PLAN

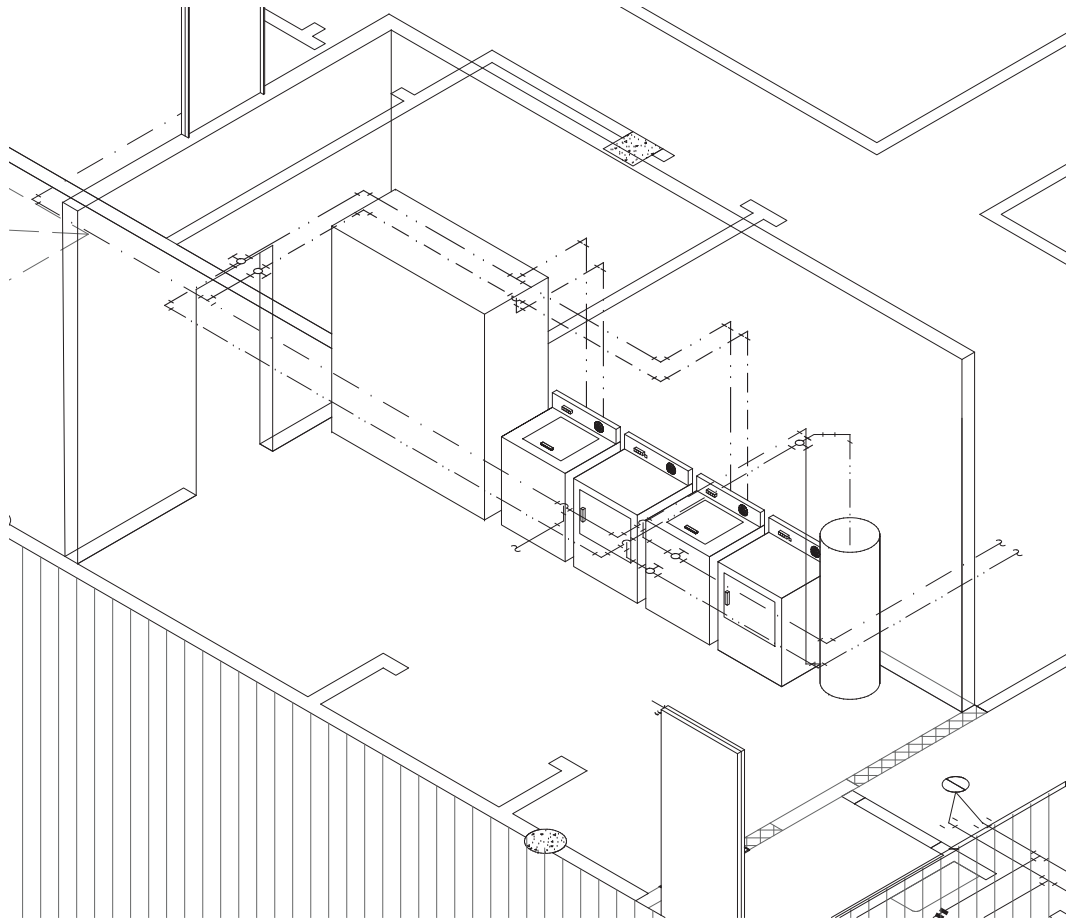
		CONSULTANTS:	ARCHITECT/ENGINEERS:	NORTH: 	APPROVED:	APPROVED:	Drawing Title New Sanitary Connections Plan Ground Floor Scale: As Noted	Project Title Firehouse Enhancement	Project Number 620-20-100	<div>Engineering Service</div> <div>Department of Veterans Affairs</div>
Bid Documents	08-17-2021				APPROVED:	APPROVED:	Approved: Facility Director , VAHVCS:	Location Montrose, New York	Building(s) Number 019	
100% Working Drawing Submission	08-16-2021				APPROVED:	APPROVED:	Approved: John Cliffe, Facility Chief of Engineering	Date 08-30-2021	Drawing Number PL 100	
95% Working Drawing Submission	05-21-2021				APPROVED:	APPROVED:		Checked LS	Drawn AMI	
65% Working Drawing Submission	02-26-2021				APPROVED:	APPROVED:			Dwg 54 of 61	
35% Working Drawing Submission	06-25-2018									
100% Preliminary Design	10-07-2017									
Revisions:	Date:									

three inches = one foot
one and one half inches = one foot
one inch = one foot
three quarters inch = one foot
one half inch = one foot
one quarter inch = one foot
one eighth inch = one foot
one eighth inch = one foot



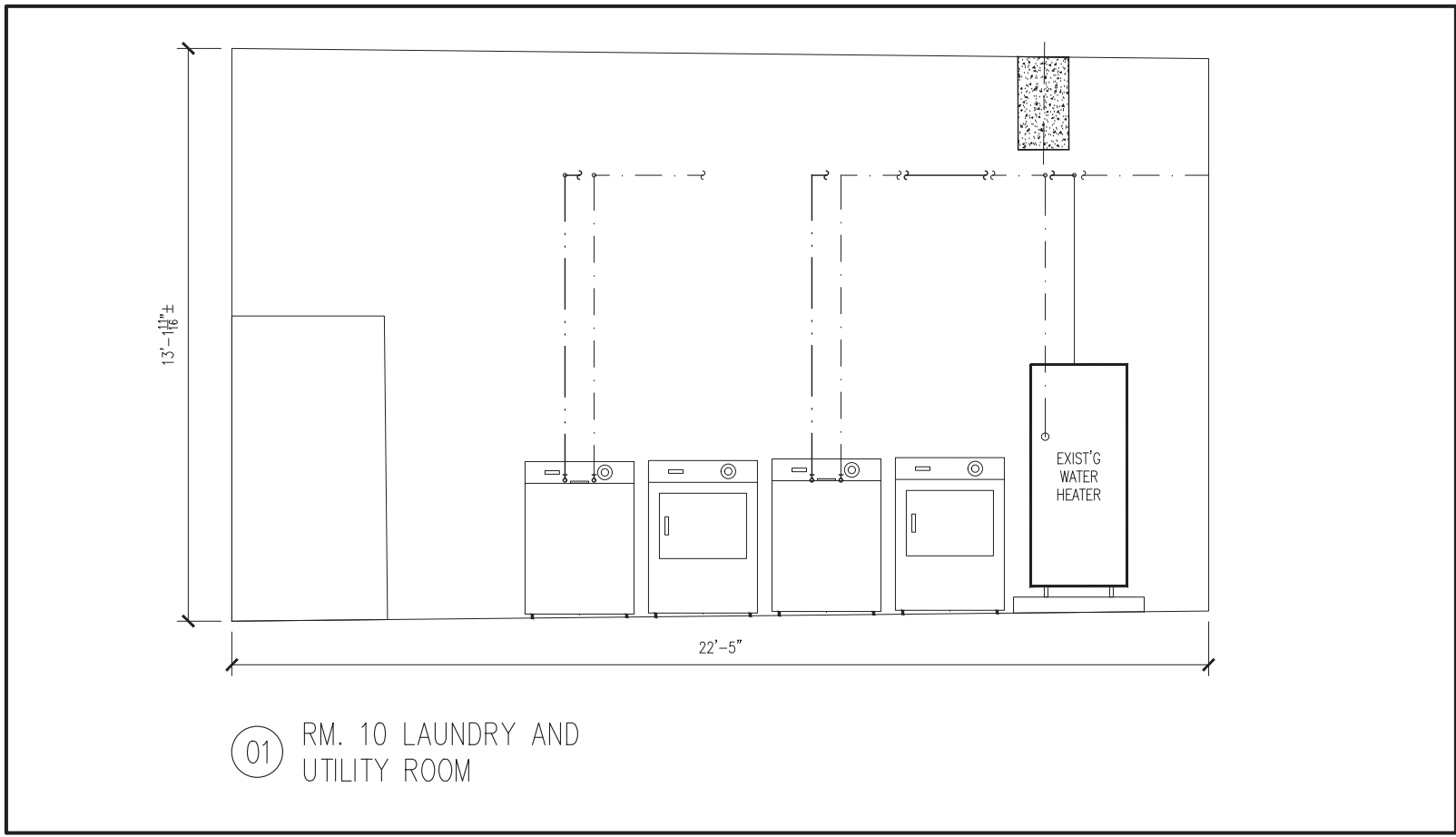
NEW DOMESTIC WATER PLUMBING PLAN

SCALE: 3/16" = 1'-0"



NEW DOMESTIC WATER PLUMBING ISOMETRIC PLAN

SCALE: 3/16" = 1'-0"



NEW DOMESTIC WATER PLUMBING ELEVATION

SCALE: 3/16" = 1'-0"



KEY PLAN

CONSULTANTS:		ARCHITECT/ENGINEERS:		NORTH:		APPROVED:		APPROVED:		Drawing Title		Project Title		Project Number	
Bid Documents		08-17-2021		08-17-2021		08-17-2021		08-17-2021		New Domestic Water Plumbing Plan		Firehouse Enhancement		620-20-100	
100% Working Drawing Submission		08-16-2021		08-16-2021		08-16-2021		08-16-2021		Ground Floor		Location		Building(s) Number	
95% Working Drawing Submission		05-21-2021		05-21-2021		05-21-2021		05-21-2021		Scale: As Noted		Montrose, New York		019	
65% Working Drawing Submission		02-28-2021		02-28-2021		02-28-2021		02-28-2021		Approved: Facility Director, VAHVCS:		Date		Drawing Number	
35% Working Drawing Submission		06-25-2018		06-25-2018		06-25-2018		06-25-2018		Approved: John Cliffe, Facility Chief of Engineering		Checked		PL 101	
100% Preliminary Design		10-07-2017		10-07-2017		10-07-2017		10-07-2017		Date		LS		Dwg. 55 of 61	
Revisions:		Date:		Date:		Date:		Date:		Date:		AMI		Engineering Service	
														Department of Veterans Affairs	

