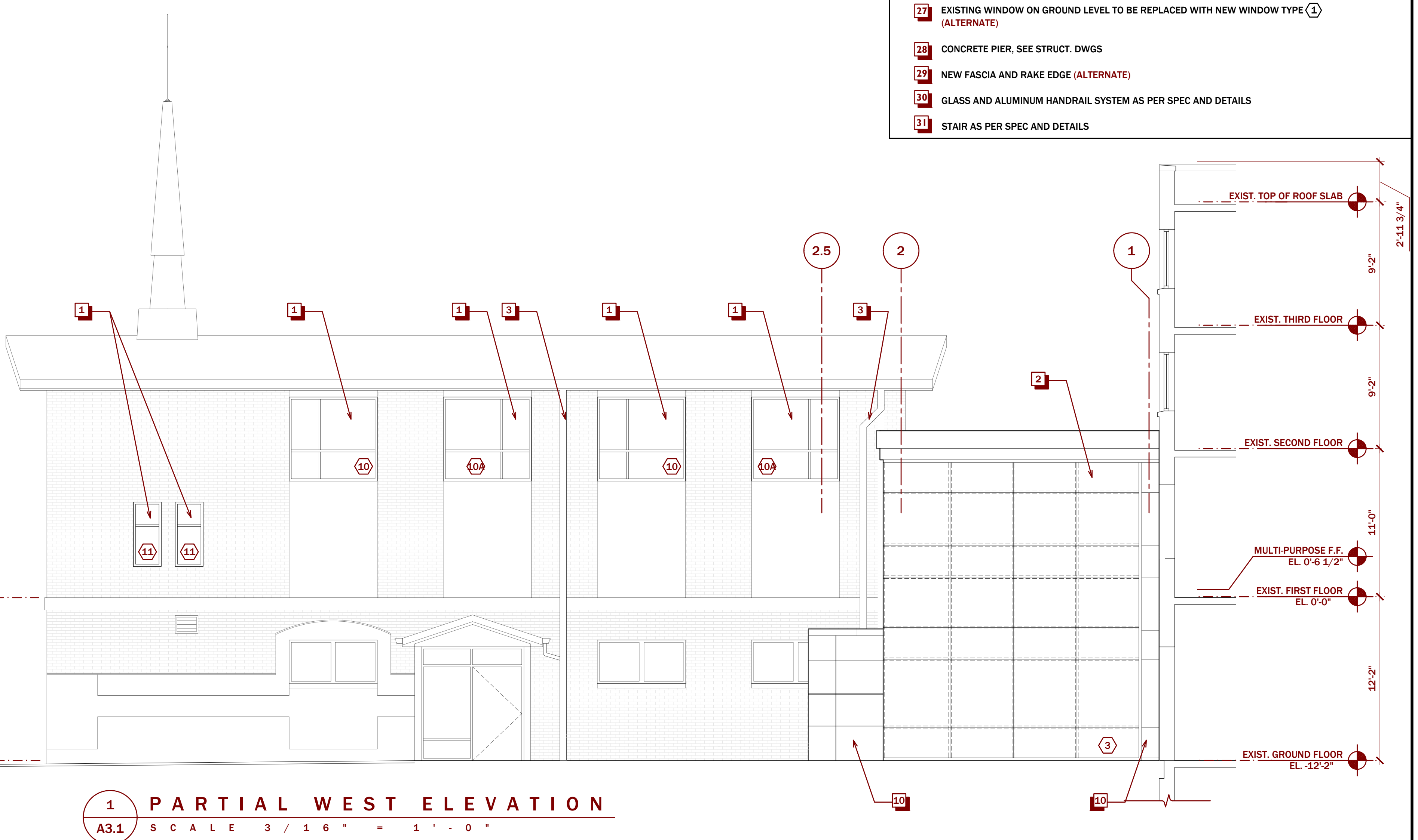
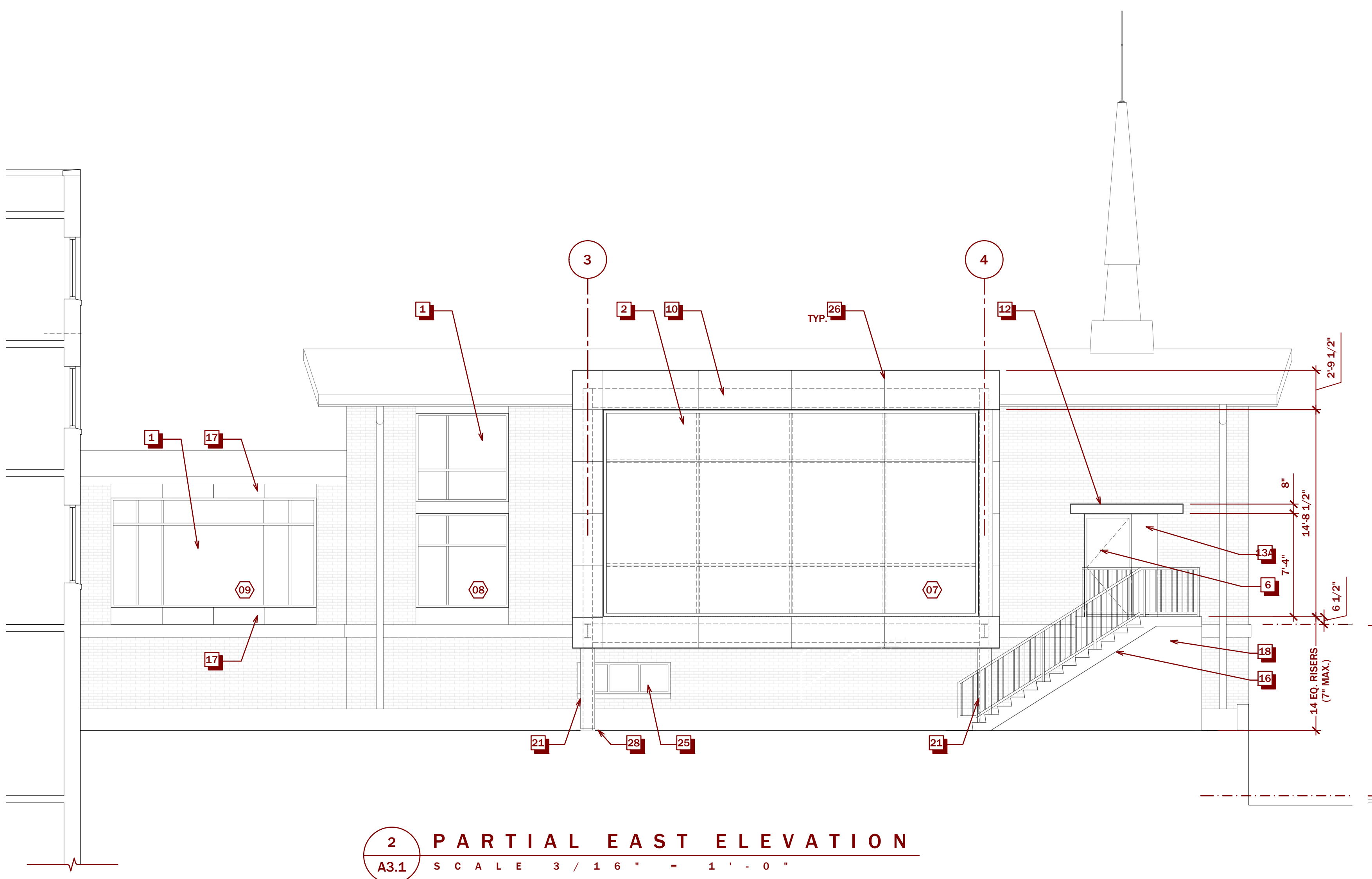


- ELEVATION & BUILDING SECTION KEYNOTES**
- 1 EXTERIOR ALUMINUM STOREFRONT SYSTEM WITH 1" INSULATING GLAZING AS PER SPECIFICATIONS AND DETAILS. (COLOR: DARK BRONZE)
 - 2 EXTERIOR ALUMINUM CURTAINWALL SYSTEM WITH 1" INSULATING GLAZING AS PER SPECIFICATIONS AND DETAILS. (COLOR: DARK BRONZE)
 - 3 ALUMINUM RAIN WATER LEADER AS PER DRAWINGS, DETAILS, & SPECS. PROVIDE CAST IRON BOOT WHERE DOWNSPOUT MEETS GRADE. (PTD. COLOR BY ARCHITECT)
 - 4 FOUNDATION AS PER STRUCTURAL DWGS.
 - 5 CONCRETE SLAB AS PER STRUCTURAL DRAWINGS AND DETAILS.
 - 6 DOOR AS PER DOOR SCHEDULE & SPECS.
 - 7 LIGHT FIXTURE AS PER RCP & ELECTRICAL DRAWINGS.
 - 8 LANDSCAPE FEATURE; REFER TO LANDSCAPE AND CIVIL DRAWINGS.
 - 9 EXTERIOR CAMERA LOCATION. BOX, WIRING AND TERMINATION AS PER ELECTRICAL DRAWINGS. CAMERA SUPPLIED AND INSTALLED BY OWNER'S VENDOR.
 - 10 ALUMINUM COMPOSITE PANEL AS PER DETAILS AND SPECIFICATIONS. BASIS OF DESIGN PRODUCT TO BE LAMINATORS OMEGA - LITE. (COLOR: EXTRA DARK BRONZE)
 - 11 ALUMINUM FLASHING AS PER DETAILS AND SPECIFICATIONS
 - 12 METAL CANOPY WITH 8" FASCIA AS PER DETAILS AND SPECIFICATIONS
 - 13 METAL PANEL INFILL WITH LOUVER, AS PER DETAIL AND SPECIFICATIONS. METAL PANEL BASIS OF DESIGN PRODUCT TO BE LAMINATORS LAMINATORS OMEGA - LITE. COLOR: TBD.
 - 14 METAL PANEL INFILL AS PER DETAILS AND SPECIFICATIONS. BASIS OF DESIGN PRODUCT TO BE LAMINATORS LAMINATORS OMEGA - LITE. COLOR: TBD.
 - 15 5" COMPOSITE TRIM BY LAMBOO, DIRECT APPLIED. COLOR/FINISH: TBD (ALTERNATE)
 - 16 NEW TPO ROOF AS PER SPECIFICATION AND DETAILS (ALTERNATE)
 - 17 NEW CONCRETE STAIR WITH GUARDS/ HANDRAILS
 - 18 BREAK METAL FASCIA. SEE DET. 8/A8.2 (COLOR BY ARCHITECT)
 - 19 ARCHITECTURAL FINISH CONCRETE WALL, SEE SPEC
 - 20 ROOF SYSTEM AS PER DETAILS AND SPECIFICATIONS
 - 21 STEEL BEAM AS PER STRUCTURAL DRAWINGS
 - 22 STEEL COLUMN AS PER STRUCTURAL DRAWINGS, CLAD EXTERIOR COLUMN IN ACM
 - 23 HVAC DUCT WORK AS PER MECHANICAL PLANS AND SPECIFICATIONS
 - 24 CEILING SYSTEM; REFER TO RCP
 - 25 EXISTING TO REMAIN
 - 26 EXISTING WINDOW TO REMAIN
 - 27 ACM PANEL JOINT LOCATION, SEE DETAILS AND SPECIFICATIONS
 - 28 EXISTING WINDOW ON GROUND LEVEL TO BE REPLACED WITH NEW WINDOW TYPE 1 (ALTERNATE)
 - 29 CONCRETE PIER, SEE STRUCT. DWGS
 - 30 NEW FASCIA AND RAKE EDGE (ALTERNATE)
 - 31 GLASS AND ALUMINUM HANDRAIL SYSTEM AS PER SPEC AND DETAILS
 - 32 STAIR AS PER SPEC AND DETAILS



Bid Issue Date:
 8.9.2021
 Drawn By:
 SLJ/MSP
 Checked By:
 JH/LG
 Scale:

Sheet Name: BUILDING ELEVATIONS

Revisions:

Progress Prints: