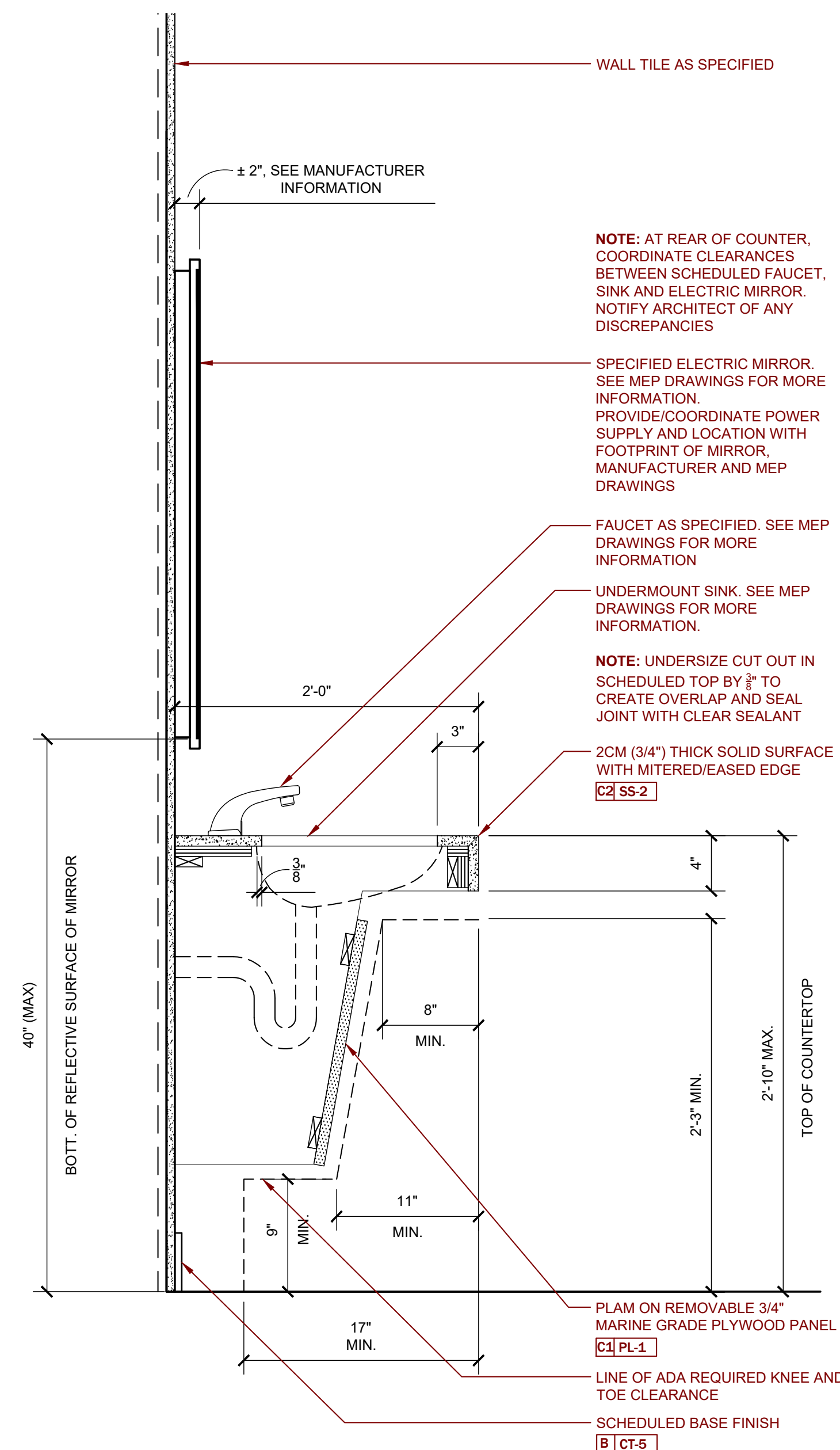
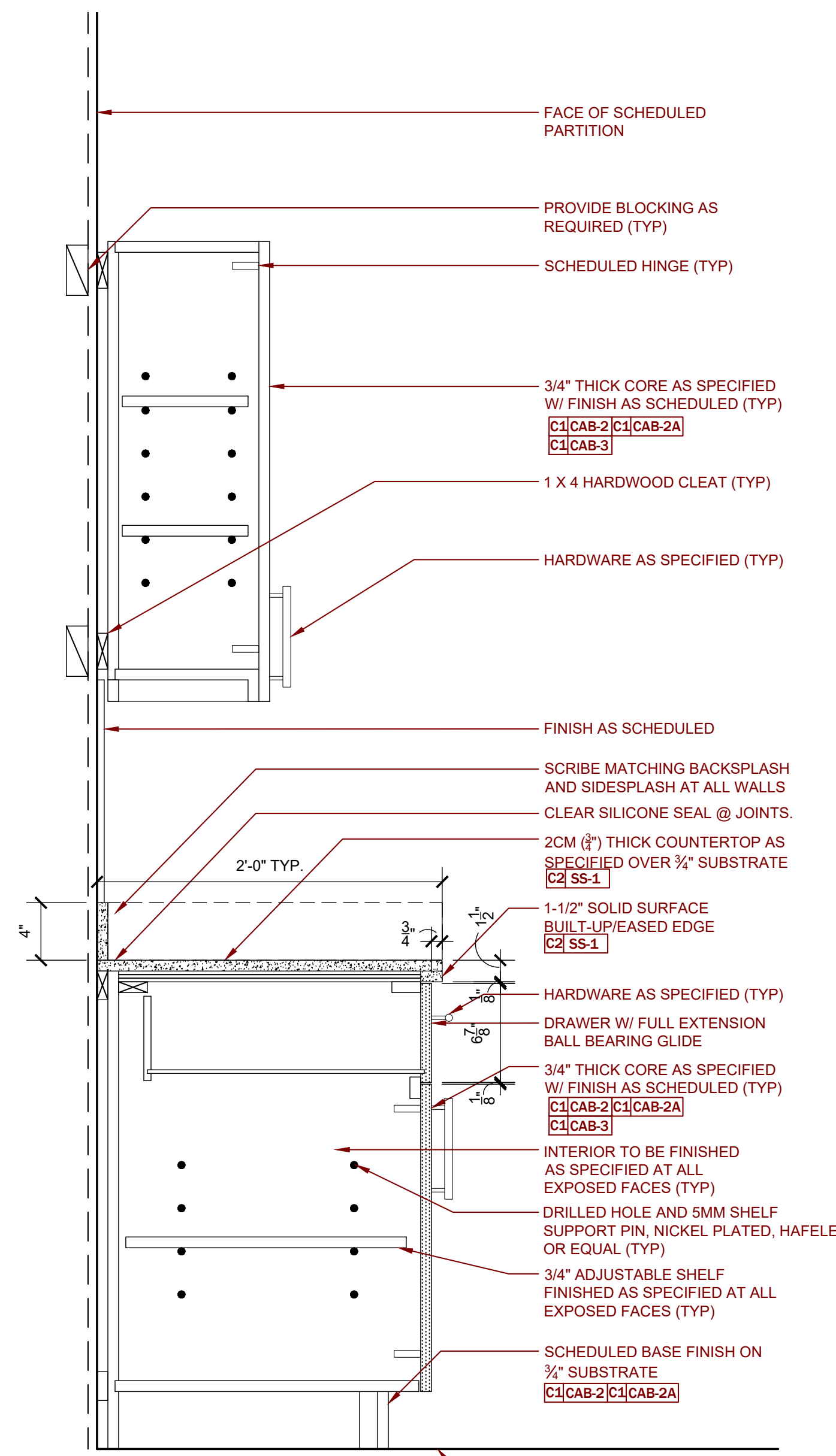


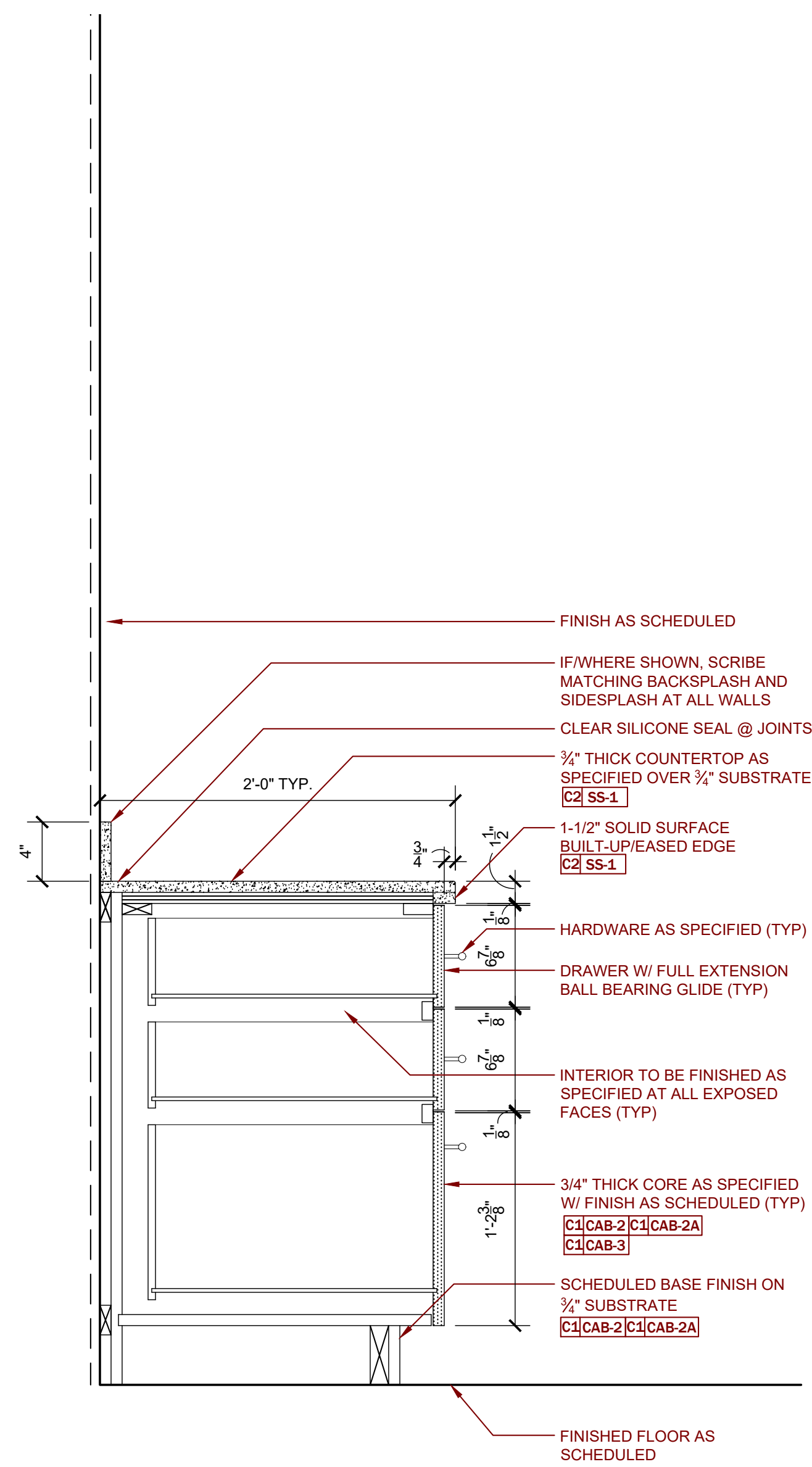
8 U & L CABINET w/ DOOR
A9.1 SCALE 1 1/2" = 1'-0"



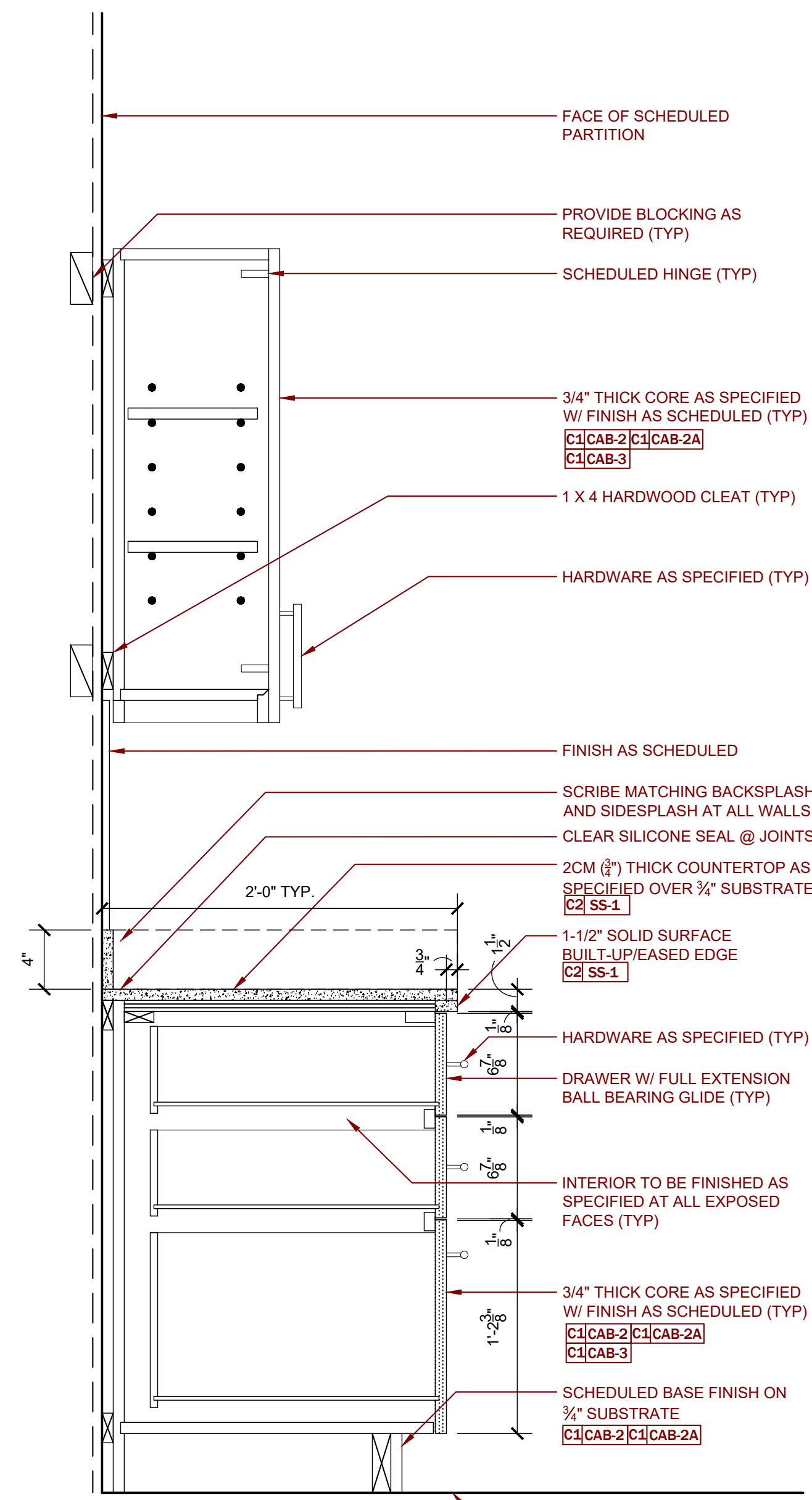
7 LAVATORY SECTION
A9.1 SCALE 1 1/2" = 1'-0"



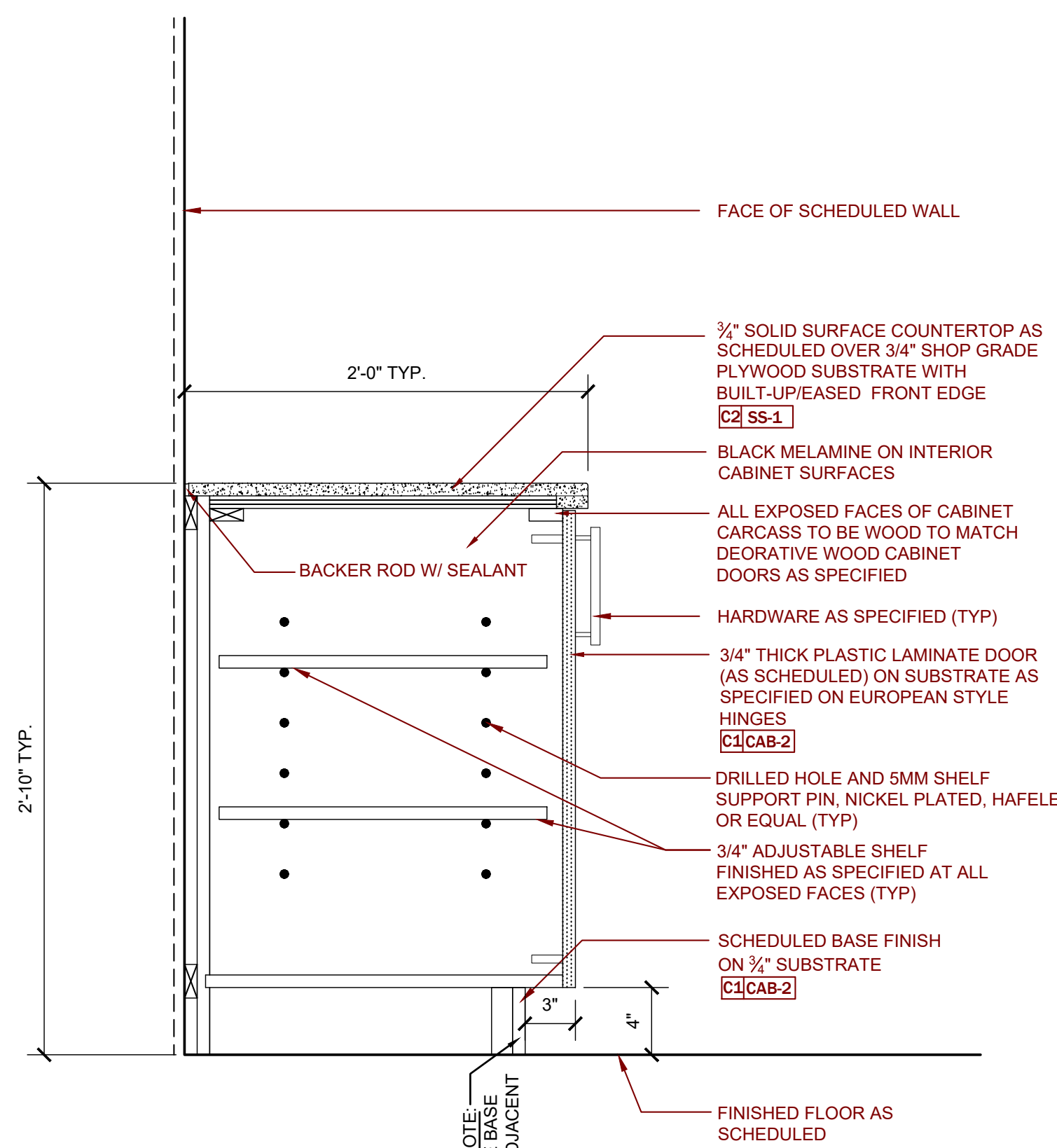
6 U&L CABINET w/DRAWER & DOOR
A9.1 SCALE 1 1/2" = 1'-0"



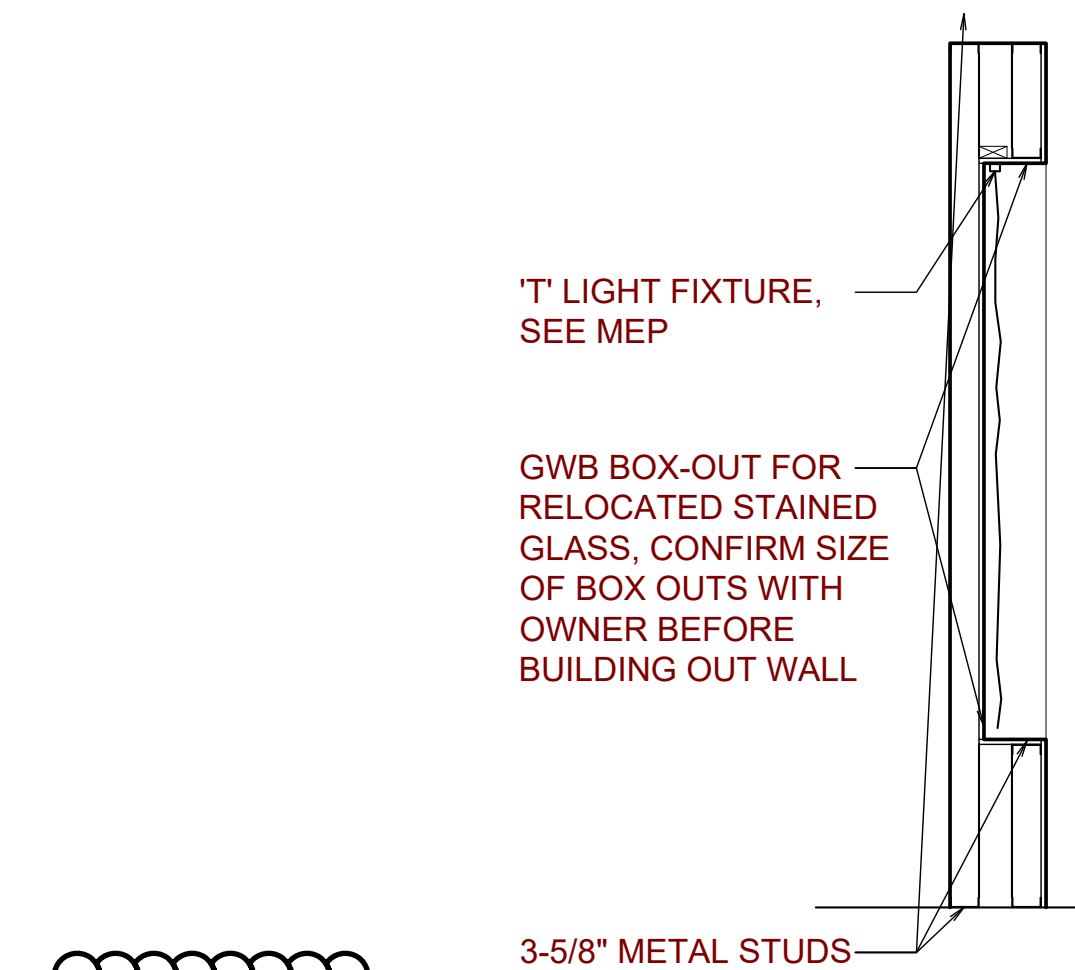
5 CREDENZA w/ ALL DRAWERS
A9.1 SCALE 1 1/2" = 1'-0"



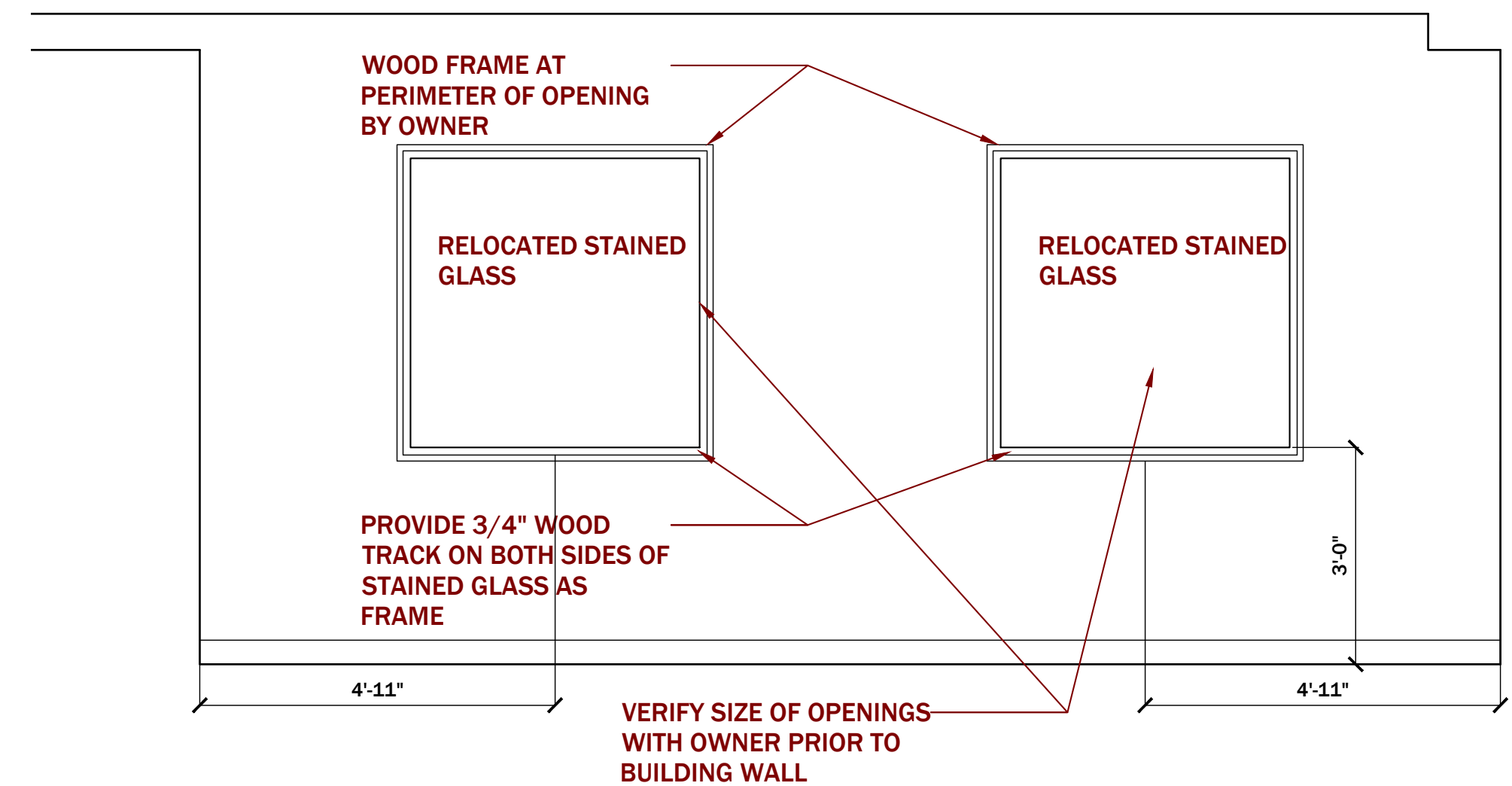
4 U&L CABINET w/ALL DRAWERS
A9.1 SCALE 1 1/2" = 1'-0"



3 CREDENZA w/ DOOR
A9.1 SCALE 1 1/2" = 1'-0"

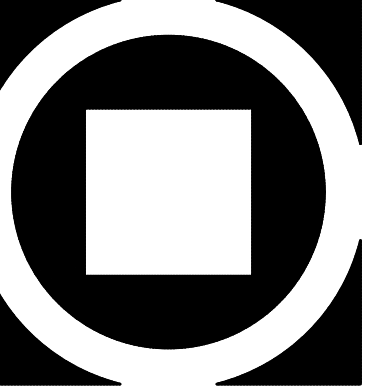


2 RELOCATED GLASS FROM CHAPEL
A9.1 SCALE 1 1/2" = 1'-0"



1 RELOCATED GLASS FROM LOBBY
A9.1 SCALE 1 1/2" = 1'-0"

NOTE: ALL MILLWORK AND
HARDWARE TO CONFORM TO
WRITTEN SPECIFICATIONS AND
AWI STANDARDS. REFER TO
FINISH SCHEDULE,
SPECIFICATIONS AND AWI FOR
MORE INFORMATION



KIMMEL BOGRETTE
Architecture + Site
Blue Bell, PA 19422
482 Norrisown Road, Suite 200
Phone 610.834.7805
Facsimile 610.834.7815
© COPYRIGHT 2021 KIMMEL BOGRETTE ARCHITECTURE + SITE, INC. ALL RIGHTS RESERVED

MOUNT SAINT MARY COLLEGE, GUZMAN HALL
COMMUNITY WELLNESS CENTER
330 POWELL AVE.
NEWBURGH, NY 12550

Bid Issue Date:
8.9.2021
Drawn By:
SLJ/MSP
Checked By:
JH/LG
Scale:

Sheet Name: MISCELLANEOUS DETAILS
Progress Prints:
Revisions:
A Bid Revision #2-11.22.21
A Bid Revision #2-11.22.21
A Bid Revision #2-11.22.21
A Bid Revision #2-11.22.21

A9.1