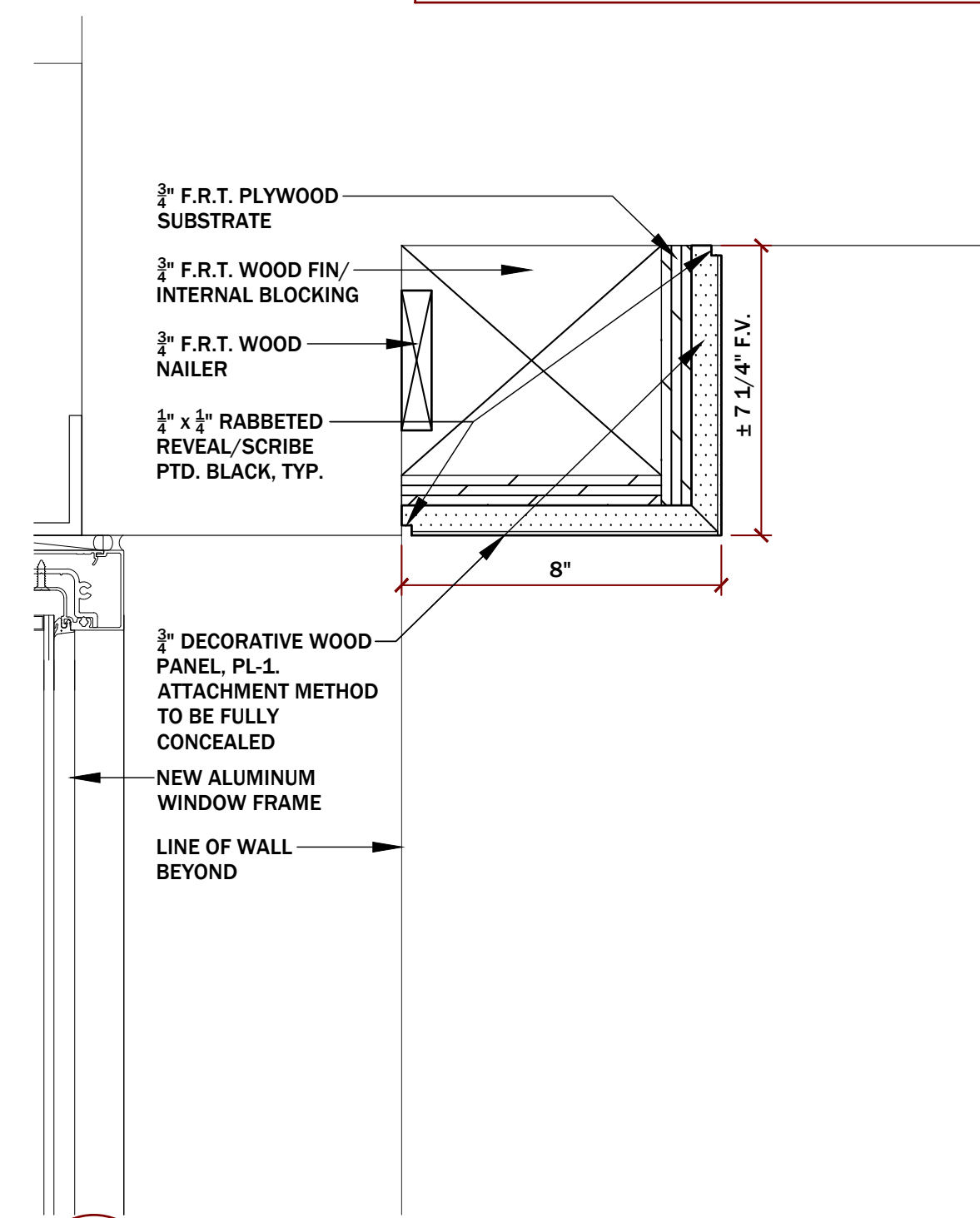
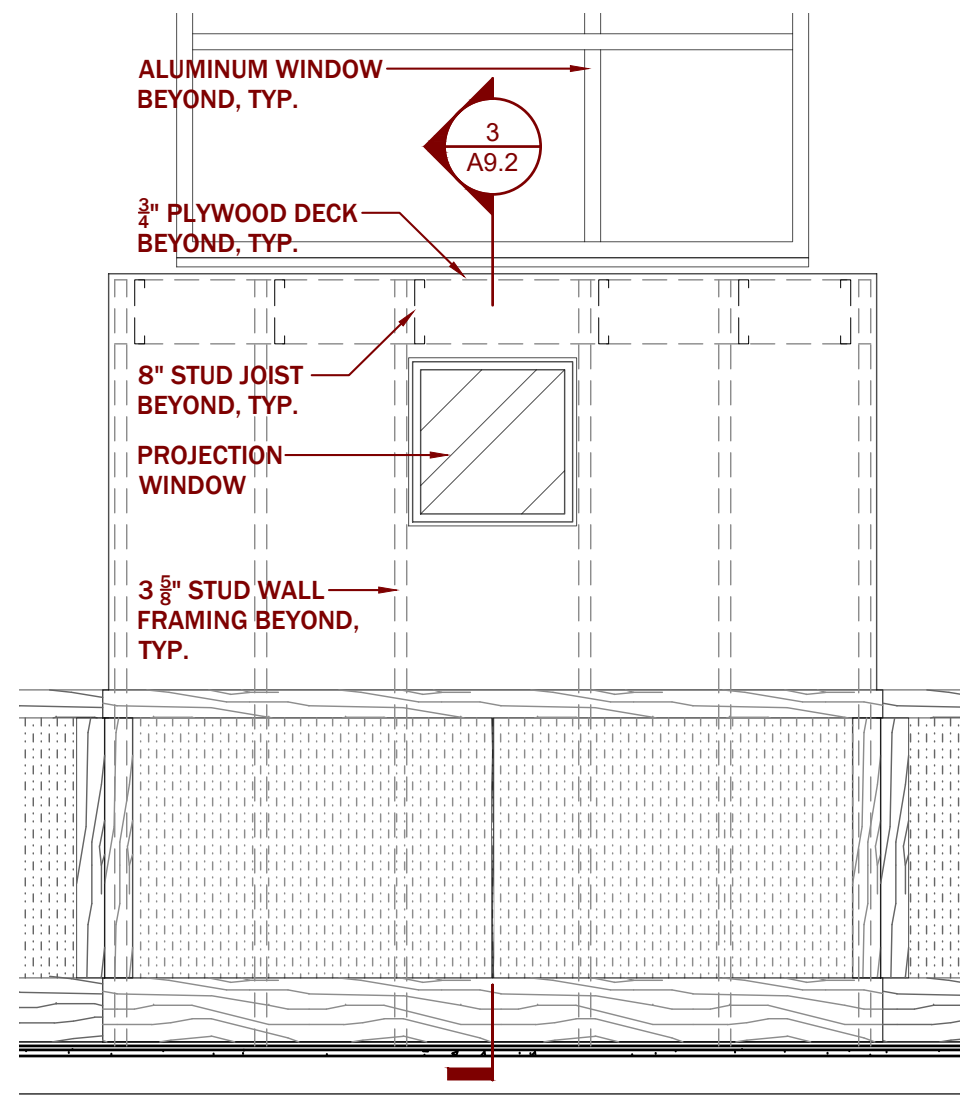


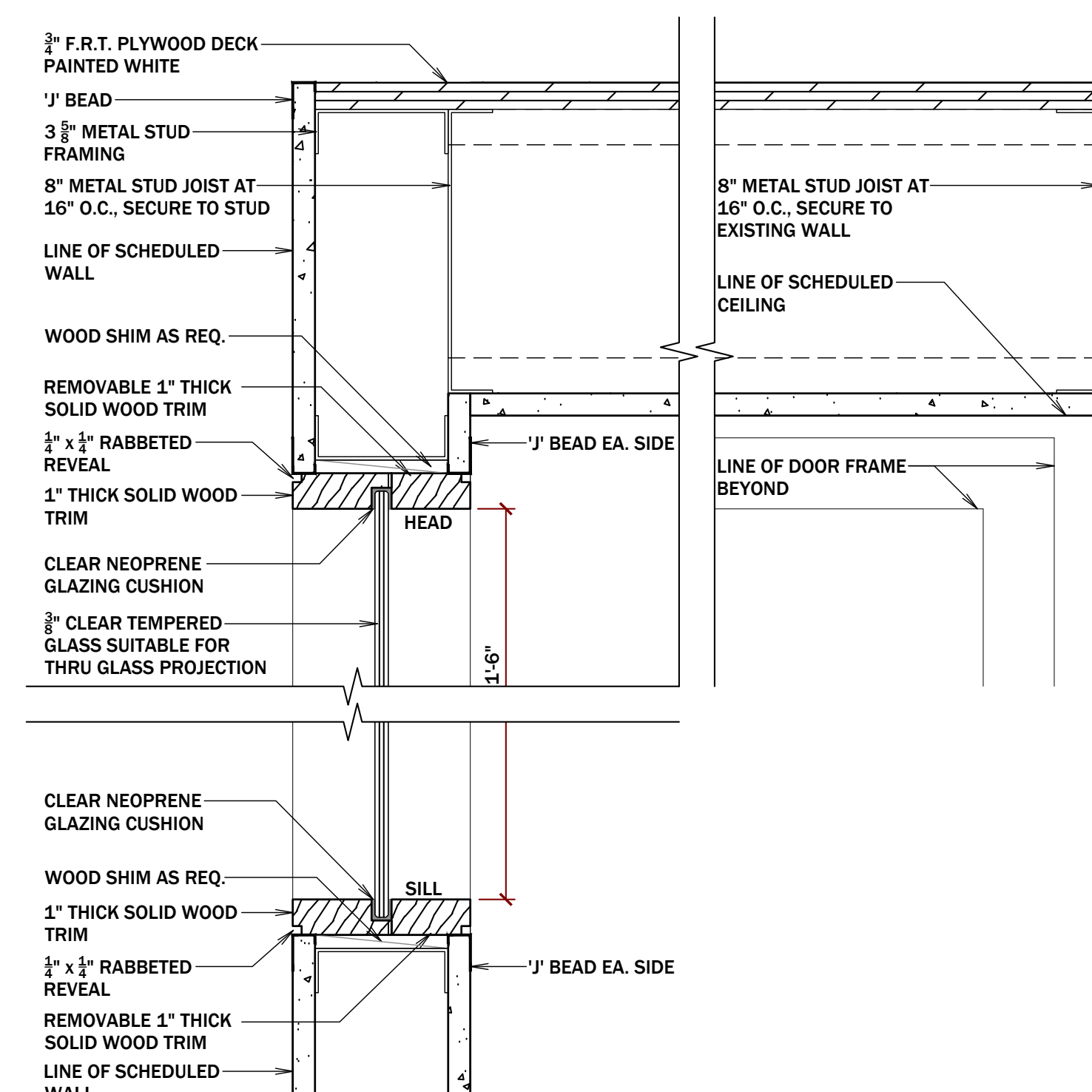
7 **DETAIL AT PROJECTION SCREEN HEAD**
A9.2 SCALE 3" = 1' - 0"



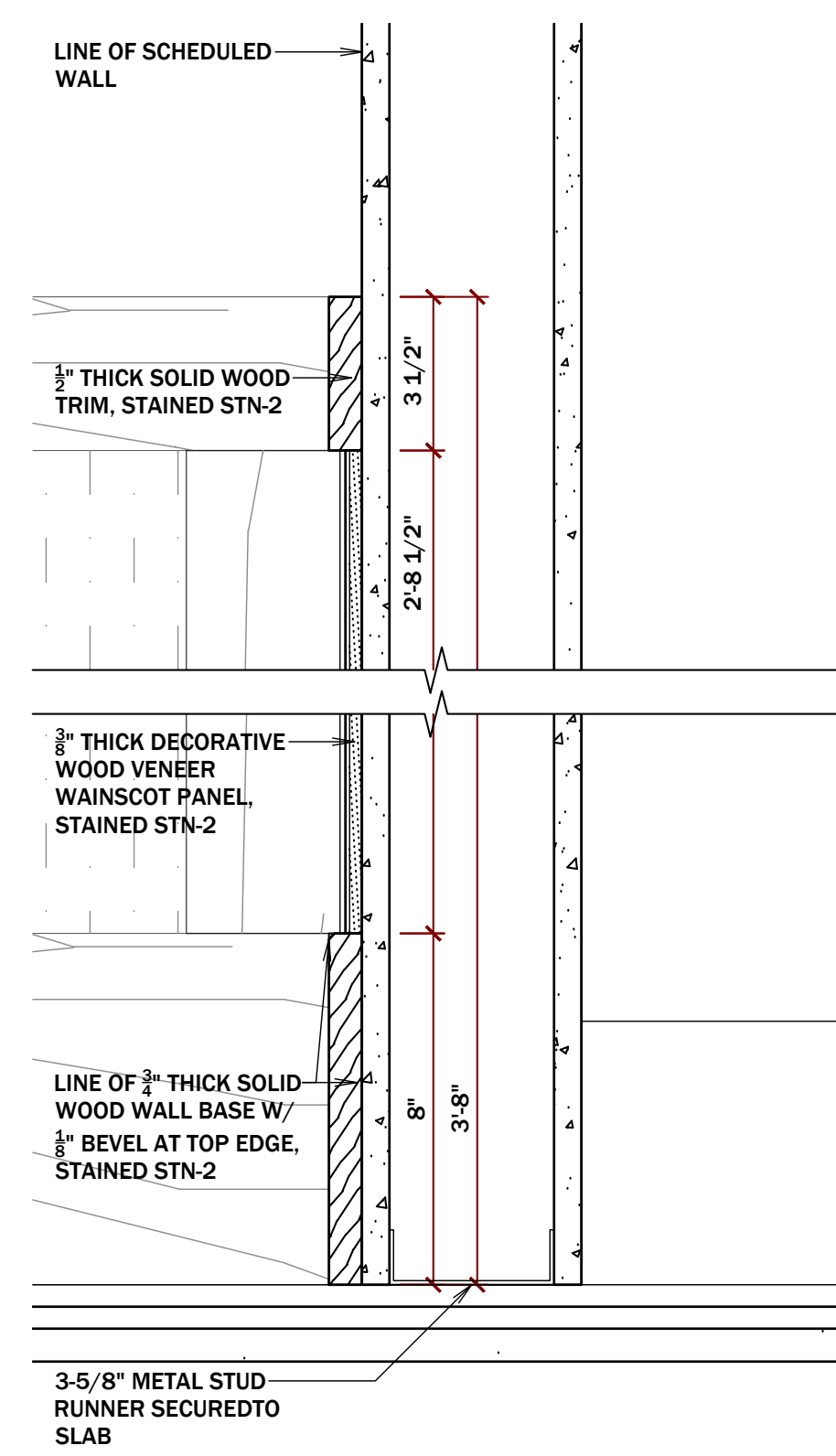
6 DETAIL AT WOOD BEAM
A9.2 SCALE 3" = 1' - 0"



4 ENLARGED ELEV. AT WAINSCOT
A9.2 SCALE 1 / 2" = 1' - 0"

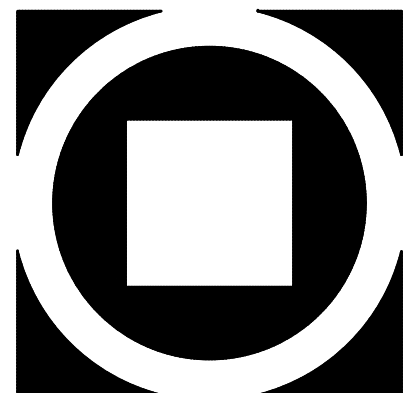


3 DETAIL AT A/V BOOTH
A9.2 SCALE 3" = 1' - 0"



1 SECT. DETAIL AT BASE/WAINSCOT
A9.2 SCALE 3" = 1' - 0"

NOTE: ALL MILLWORK AND HARDWARE TO CONFORM TO WRITTEN SPECIFICATIONS AND AWI STANDARDS. REFER TO FINISH SCHEDULE, SPECIFICATIONS AND AWI FOR MORE INFORMATION



KIMMEL BOGRETTE

Architecture + Site

182 Norristown Road, Suite 200
Blue Bell, PA 19422

Phone: 610.834.7805
Facsimile: 610.834.7815

CONFIDENTIAL 2021 KIMMEL BOOKETTE ARCHITECTURE + SITE, INC. ALL RIGHTS RESERVED

MOUNT SAINT MARY COLLEGE, GUZMAN HALL
COMMUNITY WELLNESS CENTER

330 POWELL AVE.

NEWBURGH, NY 1255

Bid Issue Date:
8/9/2021

Drawn By:

Checked By: SL/JM/SP

JH/LG

Sheet Name: MISCELLANEOUS DETAILS

| | |
|------------------|------------|
| Progress Prints: | Revisions: |
| | ^ |

[illegible]

A9.2