

## SYSTEM GROUNDING AND BONDING DIAGRAM

SCALE: NONE

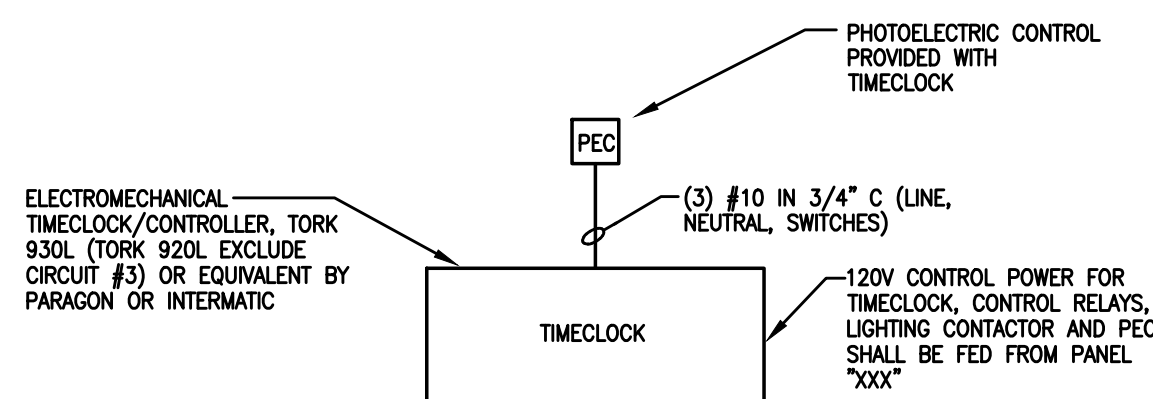
DIAGRAM IS SCHEMATIC AND DOES NOT REPRESENT EVERY FEEDER AND BRANCH CIRCUIT. REFER TO SINGLE LINE DIAGRAM(S) AND FLOOR PLANS.

## ROOM CONTROL DIAGRAMS AND LEGEND

SCALE: NONE

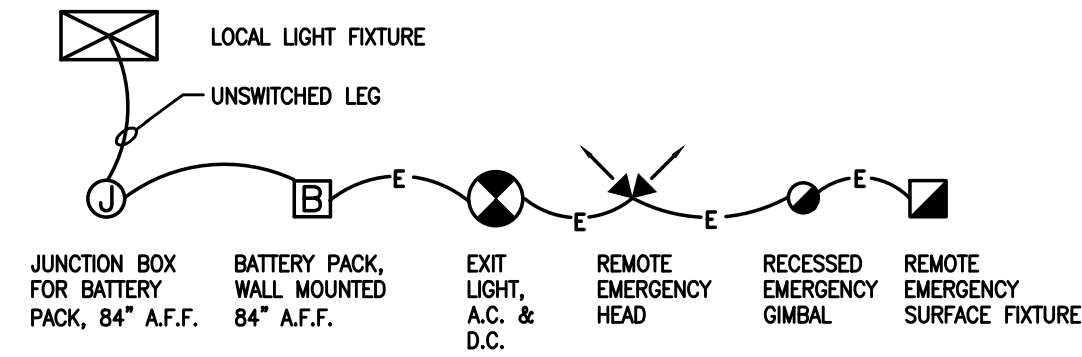
DIAGRAM IS SCHEMATIC ONLY AND DOES NOT REPRESENT ACTUAL DEVICE QUANTITIES. EVERY DEVICE INDICATED MAY NOT BE UTILIZED FOR THIS PROJECT. REFER TO FLOOR PLAN DRAWINGS FOR ADDITIONAL CONTROL, SYSTEM DEVICES AND QUANTITIES. REFER ALSO TO SPEC SECTION 265000/260900 FOR FURTHER INFORMATION.

- NOTE:
- COORDINATE INSTALLATION WITH MANUFACTURER'S RECOMMENDATION
  - ALL COMPONENTS BY HUBBLE CONTROL SOLUTIONS UNLESS NOTED OTHERWISE
  - PROVIDE MANUFACTURER'S START-UP AND TRAINING.



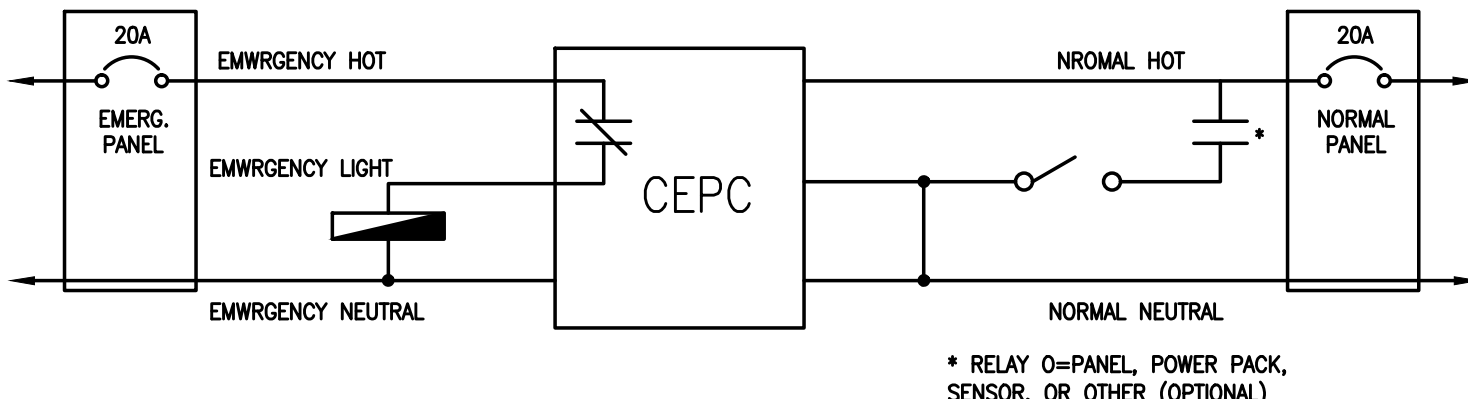
## LIGHTING CONTROL WITH ELECTROMECHANICAL TIMECLOCK

SCALE: NONE



## BATTERY POWERED EMERGENCY LIGHTING DIAGRAM

SCALE: NONE

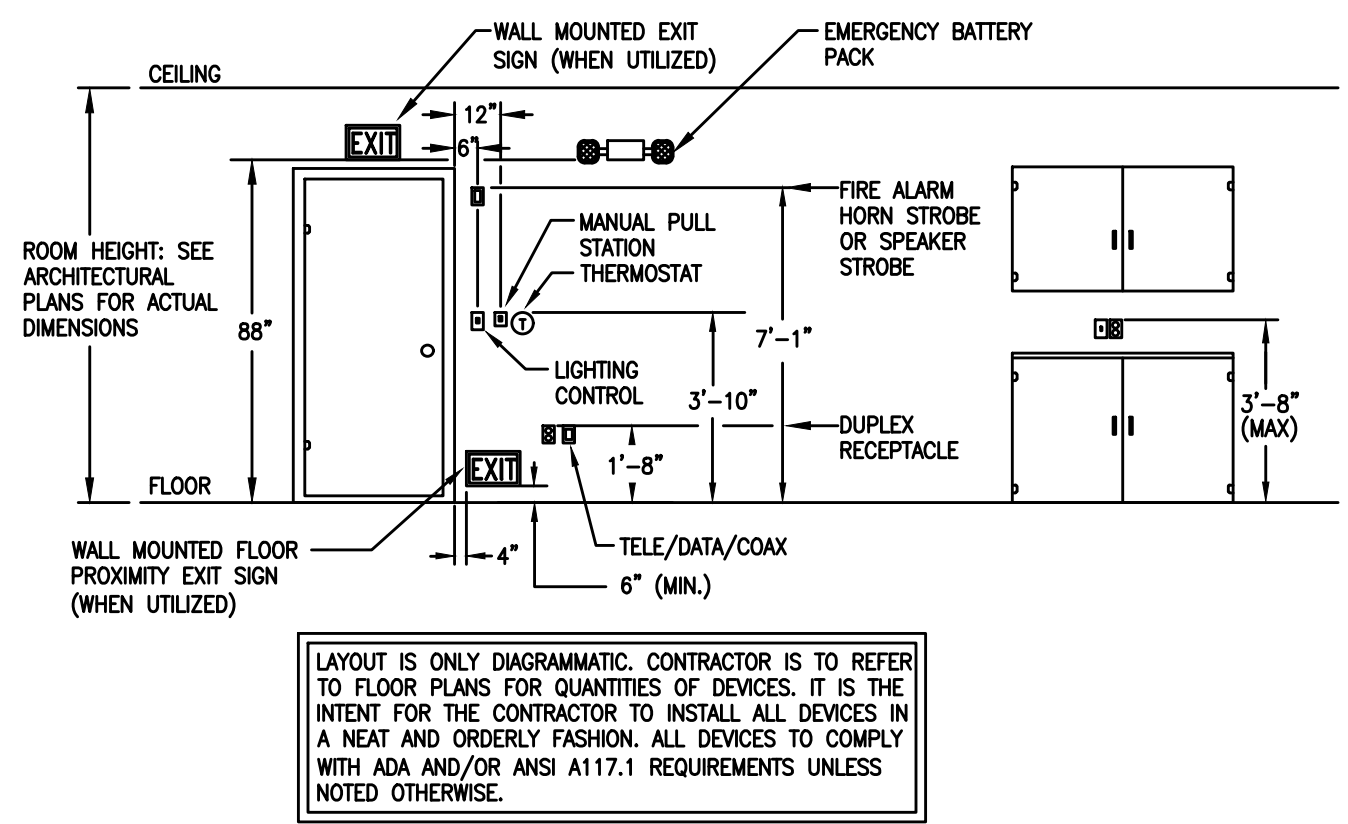


## CEPC EMERGENCY POWER CONTROL DIAGRAM

SCALE: NONE

NORMAL OPERATION  
LIGHTING LOAD CONTROLLED BY LOCAL SWITCHING MEANS.

GENERATOR OPERATION  
LIGHTING LOAD IS INDEPENDENT OF LOCAL SWITCHING MEANS.

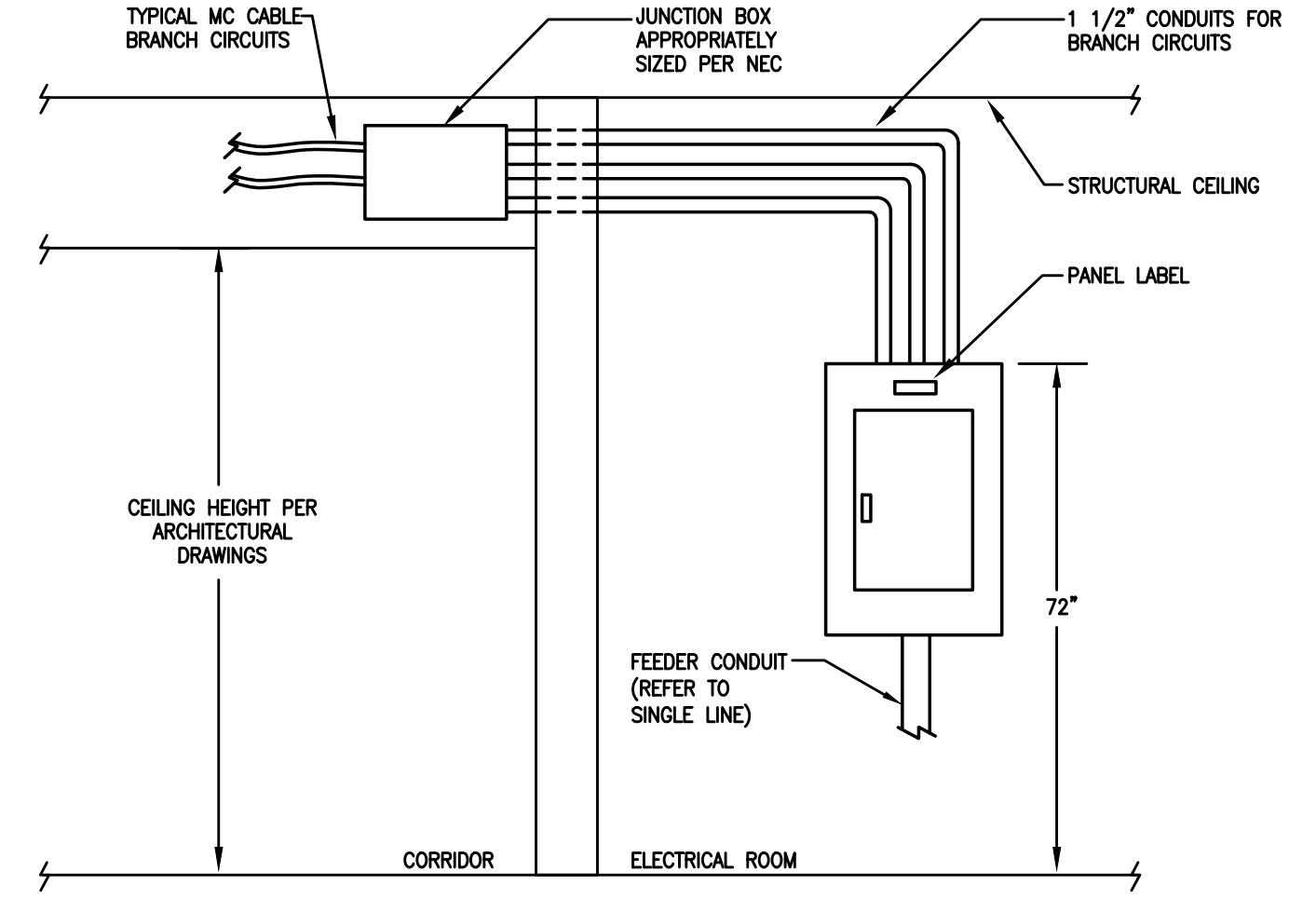


## TYPICAL DEVICE ELEVATION DETAIL

SCALE: NONE

NOTE:

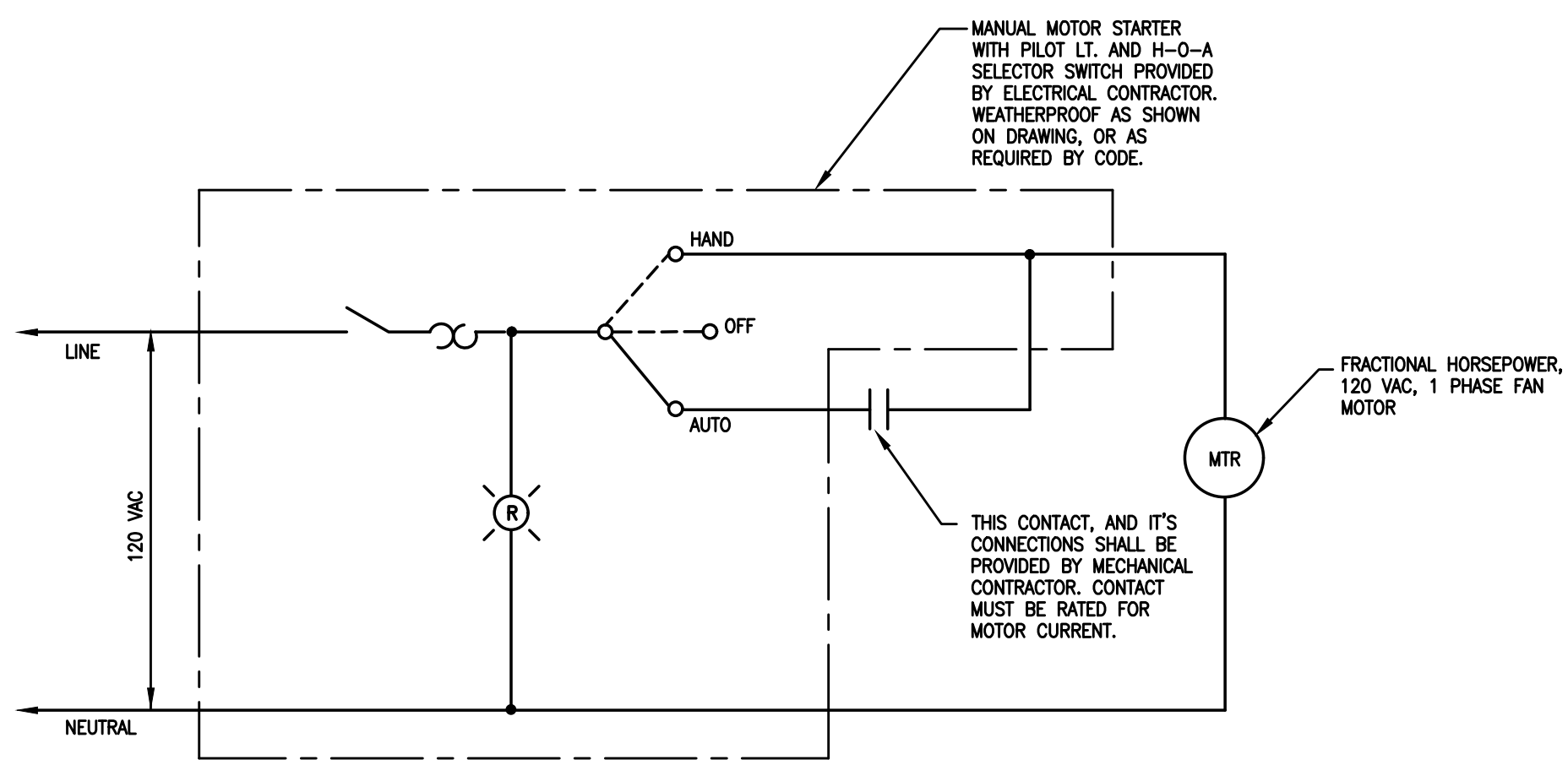
- ALL GENERAL PURPOSE RECEPTACLES TELE/DATA/COAX OUTLETS ARE TO BE MOUNTED AT A MINIMUM OF 15\"/>
- ALL GENERAL PURPOSE RECEPTACLES, LIGHTING SWITCHES AND LOW VOLTAGE OUTLETS ABOVE COUNTERTOPS ARE TO BE MOUNTED A MAXIMUM OF 44\"/>
- LIGHTING CONTROLS AND FIRE ALARM PULL STATIONS ARE TO BE MOUNTED AT MAXIMUM OF 48\"/>
- THERMOSTATS ARE INDICATED FOR SIDE REACH APPLICATIONS. WHEN LOOKABLE COVERS ARE PROVIDED, THERMOSTATS ARE TO BE MOUNTED AT 4\"/>



## TYPICAL SURFACE MOUNTED LIGHTING/APPLIANCE PANELBOARD INSTALLATION DETAIL

SCALE: NONE

NOTE: ELECTRICAL CONTRACTOR IS RESPONSIBLE FOR INCREASING WIRE SIZE FROM PANELBOARD TO JUNCTION BOX IN CORRIDOR.

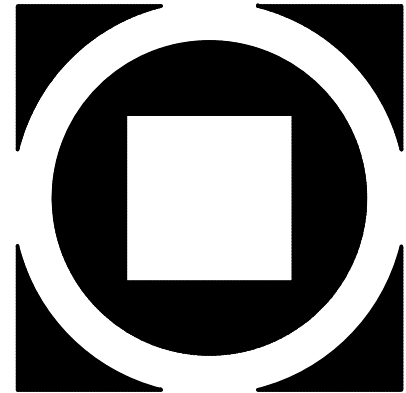


## SINGLE PHASE FRACTIONAL HORSEPOWER MOTOR STARTER

TYPICAL FOR EXHAUST FANS

THE DELIVERY OF THIS DRAWING SHOULD NOT BE CONSTRUED TO PROVIDE AN EXPRESS WARRANTY OR GUARANTEE TO ANYONE THAT ALL THE DIMENSIONS AND DETAILS ARE EXACT OR TO INDICATE THAT THE USE OF THIS DRAWING IMPLIES THE REVIEW AND APPROVAL BY THE DESIGN PROFESSIONAL OF ANY FUTURE USE. ANY USE OF THIS INFORMATION WITHOUT THE WRITTEN APPROVAL BY THE DESIGN PROFESSIONAL IS AT THE SOLE RISK AND LIABILITY OF THE USER. THE DESIGN PROFESSIONAL RESERVES THE RIGHT TO REMOVE OUR PROFESSIONAL SEAL AND/OR TITLE BLOCK.

NOTICE  
THE SCHEDULES AND DRAWINGS REPRESENT ONLY CERTAIN REQUIREMENTS OF THE PROJECT. THERE ARE ADDITIONAL REQUIREMENTS IN THE SPECIFICATIONS BOOKLET WHICH THE CONTRACTOR IS BOUND TO PROVIDE. A SUPPLIER OR CONTRACTOR'S PRICING, WHICH IS BASED ONLY ON DRAWINGS OR SCHEDULES, MAY LEAVE IMPORTANT COSTS UNACCOUNTED FOR WHICH WILL ULTIMATELY BE THE CONTRACTOR OR SUPPLIER'S RESPONSIBILITY TO PROVIDE.



KIMMEL BOGRETTE  
Architecture + Site  
482 Norrisown Road, Suite 200  
Blue Bell, PA 19422  
Phone: 610.834.7805  
Facsimile: 610.834.7815  
COPYRIGHT 2021 KIMMEL BOGRETTE ARCHITECTURE + SITE, INC. ALL RIGHTS RESERVED



MOUNT SAINT MARY COLLEGE, GUZMAN HALL  
COMMUNITY WELLNESS CENTER  
330 POWELL AVE.  
NEWBURGH, NY 12550

Construction Issue Date:  
Drawn By: AFMZ/PR  
Checked By:  
Scale: AS NOTED

DETAILS & SCHEDULES - ELECTRICAL  
Sheet Name:  
Progress Prints:  
Bid Set (08/09/21)  
Revisions:  
1  
2  
3  
4  
5

E2.1