

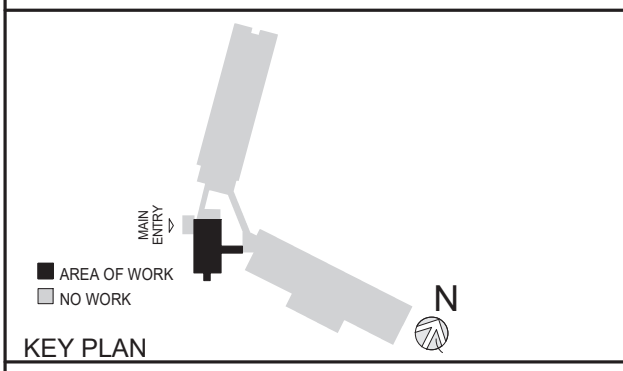
KG+D listen imagine build
KG+D . ARCHITECTS PC
 285 MAIN STREET MOUNT KISCO . NEW YORK . 10549
 P:914.666.5900 KGDARCHITECTS.COM

bgo
 BARILE GALLAGHER & ASSOCIATES
 CONSULTING ENGINEERS
 39 MARBLE AVE. PLEASANTVILLE, NY 10570
 P:914.328.6000 FAX: 914.328.9304 G0004@BGA-Eng.com

NY SED PROJECT CONTROL NO.

66-23-00-01-0-008-011

CONSTRUCTION DOCUMENTS



NOTE: ALL IDEAS, DESIGNS, ARRANGEMENTS AND PLANS INDICATED OR REPRESENTED BY THIS DRAWING ARE OWNED BY AND ARE THE PROPERTY OF KAEYER, GARMENT, & DAVIDSON ARCHITECTS, PC (KGD), AND WERE CREATED FOR USE ON THIS PROJECT. NONE OF SUCH IDEAS, DESIGNS, ARRANGEMENTS OR PLANS SHALL BE USED BY OR DISCLOSED TO ANY PURPOSE WHATSOEVER WITHOUT THE WRITTEN PERMISSION OF KGD.

WRITTEN DIMENSIONS ON THIS DRAWING SHALL HAVE PRECEDENCE OVER SCALED DIMENSIONS. CONTRACTOR SHALL VERIFY ALL ACTUAL DIMENSIONS AND CONDITIONS ON THE JOB AND THE ARCHITECT MUST BE NOTIFIED OF ANY VARIATIONS FROM DIMENSIONS AND CONDITIONS SHOWN. SHOP DETAILS MUST BE SUBMITTED TO THIS OFFICE FOR APPROVAL, BEFORE PROCEEDING WITH FABRICATION.

ALTERATIONS BY ANY PERSON, IN ANY WAY, OF ANY ITEM CONTAINED ON THIS DOCUMENT, UNLESS ACTING UNDER THE DIRECTION OF THE LICENSED ARCHITECT (WHOSE PROFESSIONAL SEAL IS AFFIXED HERETO), IS A VIOLATION OF TITLE VII, SECT. 69.2 (b) OF NEW YORK STATE LAW. COPYRIGHT KAEYER, GARMENT & DAVIDSON ARCHITECTS & ENGINEERS, PC. ALL RIGHTS RESERVED.

Professional Seal

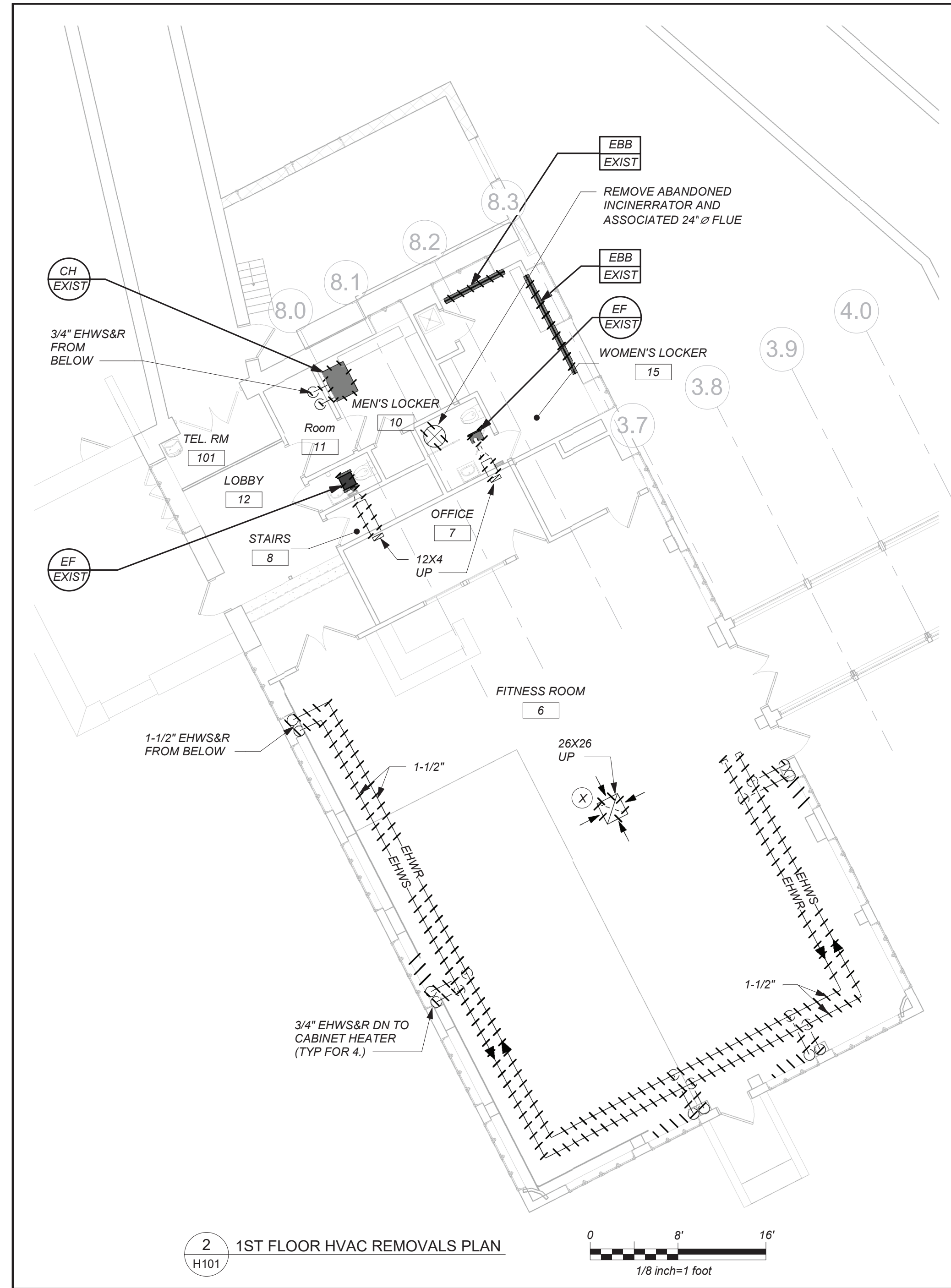
2	2022-07-12	ISSUE FOR BID
1	2022-03-24	CONSTRUCTION DOCUMENTS
No.	Date	Issue

LEGEND, NOTES, & PART BASEMENT, 1ST, & 2ND FLOOR PLANS (REMOVALS)

Job No.	2021-1048	Date	09/10/2021
Scale	AS NOTED	Drawn / Checked	BGA / BGA

Sheet Number
H101

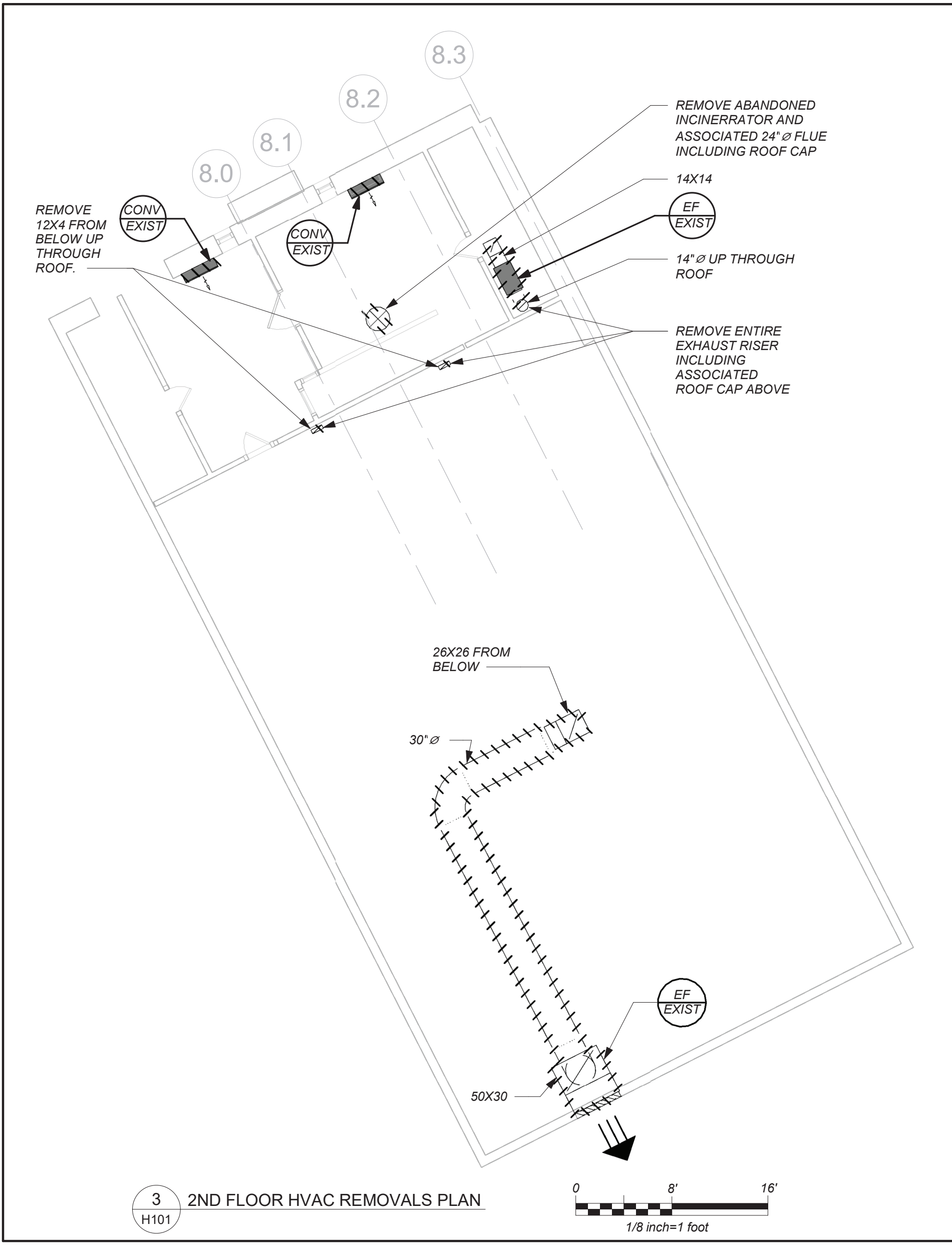
LEGEND	
	EXISTING DUCTWORK, EQUIPMENT, ETC. TO REMAIN
	EXISTING DUCTWORK, EQUIPMENT, ETC. TO BE REMOVED
	NEW DUCTWORK POINT OF CHANGE IN DUCT SIZE
	NEW DUCTWORK FLEXIBLE CONNECTION
	NEW DUCTWORK POINT OF CHANGE IN DUCT SIZE SQUARE DUCT TURN WITH TURNING VANES
	NEW 4-WAY CEILING DIFFUSER TYPE - SEE SCHEDULE
	CEILING EXHAUST/RETURN REGISTER TYPE - SEE SCHEDULE
	REGISTER/DIFFUSER IDENTIFICATION TYPE - SEE SCHEDULE
	DUCT DROP, DUCT RISE
	DUCT MTD. MANUAL AIR VOLUME DAMPER (W/LOCKING DEVICE)
	MOTORIZED AIR VOLUME DAMPER (W/ACCESS DOOR)
	FD & AD FIRE DAMPER (U.L. APPROVED) & ACCESS DOOR
	FSD & AD COMBINATION FIRE/SMOKE DAMPER (U.L. APPROVED) & ACCESS DOOR
	EHWR EXISTING HOT WATER SUPPLY PIPING
	EHWR EXISTING HOT WATER RETURN PIPING
	HWR HOT WATER SUPPLY PIPING
	HWR HOT WATER RETURN PIPING
	L LIQUID REFRIGERANT PIPING
	S SUCTION REFRIGERANT PIPING
	HG HOT GAS REFRIGERANT PIPING
	CD CONDENSATE DRAIN PIPING
	FLOW DIRECTION WITHIN PIPE CONNECTION TO EQUIPMENT ABOVE
	GATE VALVE (HORIZONTAL/VERTICAL)
	COMBINATION BALANCING & SHUT-OFF VALVE (CIRCUIT SETTER)
	2 - WAY CONTROL VALVE
	3 - WAY CONTROL VALVE
	CHECK VALVES
	PIPE CONNS. (BOTTOM, TOP 45 OR 90; PIPE UP)
	EF EXIST EXISTING EXHAUST FAN IDENTIFICATION
	B EXIST EXISTING BOILER IDENTIFICATION
	HWH EXIST EXISTING HOT WATER HEATER IDENTIFICATION
	CH EXIST EXISTING HOT WATER CABINET HEATER IDENTIFICATION
	CONV EXIST EXISTING CONVECTOR IDENTIFICATION
	HWP EXIST EXISTING HOT WATER PUMP IDENTIFICATION
	ERV EXIST ENERGY RECOVERY VENTILATOR IDENTIFICATION
	HP EXIST AIR SOURCE HEAT PUMP UNIT IDENTIFICATION
	FC EXIST FAN COIL UNIT IDENTIFICATION
	CH EXIST HOT WATER CABINET HEATER IDENTIFICATION
	UH EXIST HOT WATER UNIT HEATER IDENTIFICATION
	HWP EXIST HOT WATER PUMP IDENTIFICATION
	TYPE ELEMENT LENGTH NEW FIN TUBE RADIATION IDENTIFICATION
	EBB EXIST EXISTING ELECTRIC BASEBOARD IDENTIFICATION
	Tc TO CONTROLLED ITEM WALL MTD. (5'-2" A.F.F.-U.O.N.) TEMPERATURE SENSOR
	CO2 TO CONTROLLED ITEM WALL MTD. (5'-2" A.F.F.-U.O.N.) CARBON DIOXIDE SENSOR
	-U- DOOR UNDERCUT
	SMRE POWDER COATED SHEET METAL RISER ENCLOSURE
	ATC AUTOMATIC TEMPERATURE CONTROLS
	CD CEILING DIFFUSER
	CR CEILING REGISTER
	TR TOP WALL REGISTER
	CFM CUBIC FEET PER MINUTE
	OA/FAI OUTSIDE (FRESH) AIR INTAKE
	CO CLEAN OUT
	HVAC HEATING, VENTILATING, AIR CONDITIONING CONTRACTOR
	GC GENERAL TRADES CONTRACTOR
	FC FLEXIBLE CONNECTION
	FSC FULL SIZE CONNECTION
	AD ACCESS DOOR
	WMG 1/2" SQ. WIRE MESH GRILLE
	FD FIRE DAMPER
	VIF VERIFY IN FIELD
	SECTION/DETAIL/ELEVATION/PART PLAN NUMBER
	-DRAWING NUMBER
	SECTION/ELEVATION IDENTIFICATION



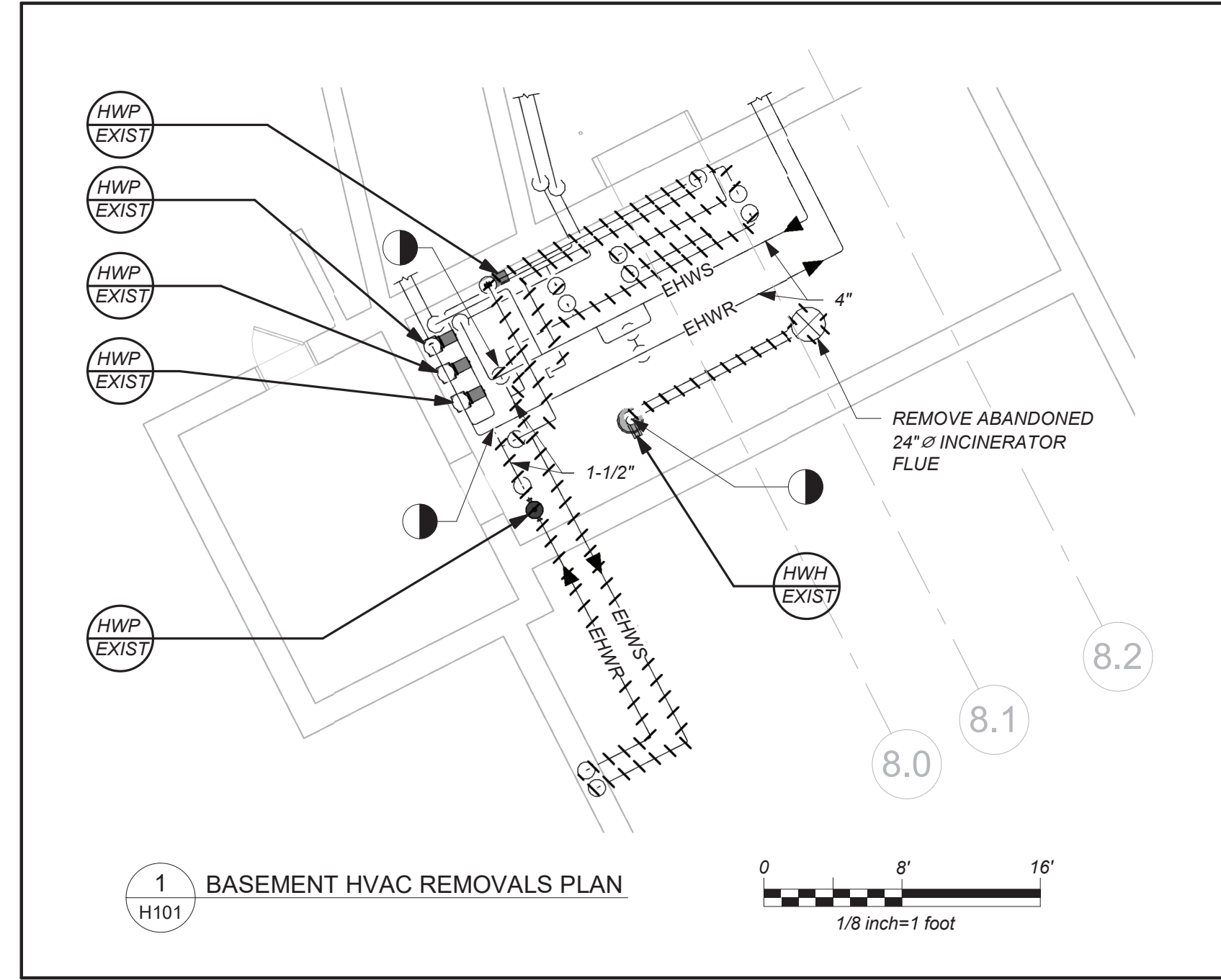
2 1ST FLOOR HVAC REMOVALS PLAN

REMOVAL NOTES:

1. THE SCOPE OF REMOVAL SHOWN ON "REMOVALS" DRAWINGS IS DIAGRAMMATIC ONLY AND INDICATES THE INTENT OF THE WORK TO BE PERFORMED AND NOT THE COMPLETE SCOPE OF DEMOLITION AND/OR REMOVAL WORK. IT SHALL BE THE RESPONSIBILITY OF THIS CONTRACTOR TO REMOVE ANY RELATED MECHANICAL DEVICES EVEN IF NOT SPECIFICALLY INDICATED TO BE REMOVED ON THESE DRAWINGS IN ORDER TO ACCOMMODATE NEW WORK.
2. DEVICES SHOWN CROSS HATCHED ON DRAWINGS ARE ITEMS TO BE REMOVED. ANY DEVICES REMOVED SHALL INCLUDE (BUT SHALL NOT BE LIMITED TO) THE REMOVAL OF ALL ASSOCIATED PIPING, CONTROLS, ETC. THAT ARE NOT INCORPORATED IN THE NEW LAYOUT. UNTIL SUCH REMOVAL IS COMPLETE, THIS CONTRACTOR SHALL PERFORM ALL WORK REQUIRED TO INSURE CONTINUITY OF SERVICE TO EXISTING REMAINING EQUIPMENT. NO EXTRAS RELATING TO THE SCOPE OF WORK DESCRIBED WILL BE ALLOWED.
3. EQUIPMENT, PIPING, ETC., REQUIRED TO RECONNECT SHALL BE INSTALLED CONCEALED WITHIN THE NEW SUSPENDED CEILINGS, PARTITIONS AND/OR WALLS. FLOORS. NO SURFACE MOUNTED OR EXPOSED EQUIPMENT, PIPING, ETC., SHALL BE PERMITTED, UNLESS SPECIFICALLY INDICATED.
4. ALL ITEMS TO BE REMOVED SHALL BE REVIEWED WITH THE OWNER PRIOR TO REMOVAL. OWNER SHALL HAVE FIRST SALVAGE RIGHTS. ITEMS THE OWNER WISHES TO KEEP SHALL BE REMOVED WITH CARE AND STORED AS DIRECTED BY OWNER. ITEMS THE OWNER DOES NOT WISH TO KEEP SHALL BE REMOVED FROM THE SITE AND DISPOSED OF PROPERLY.

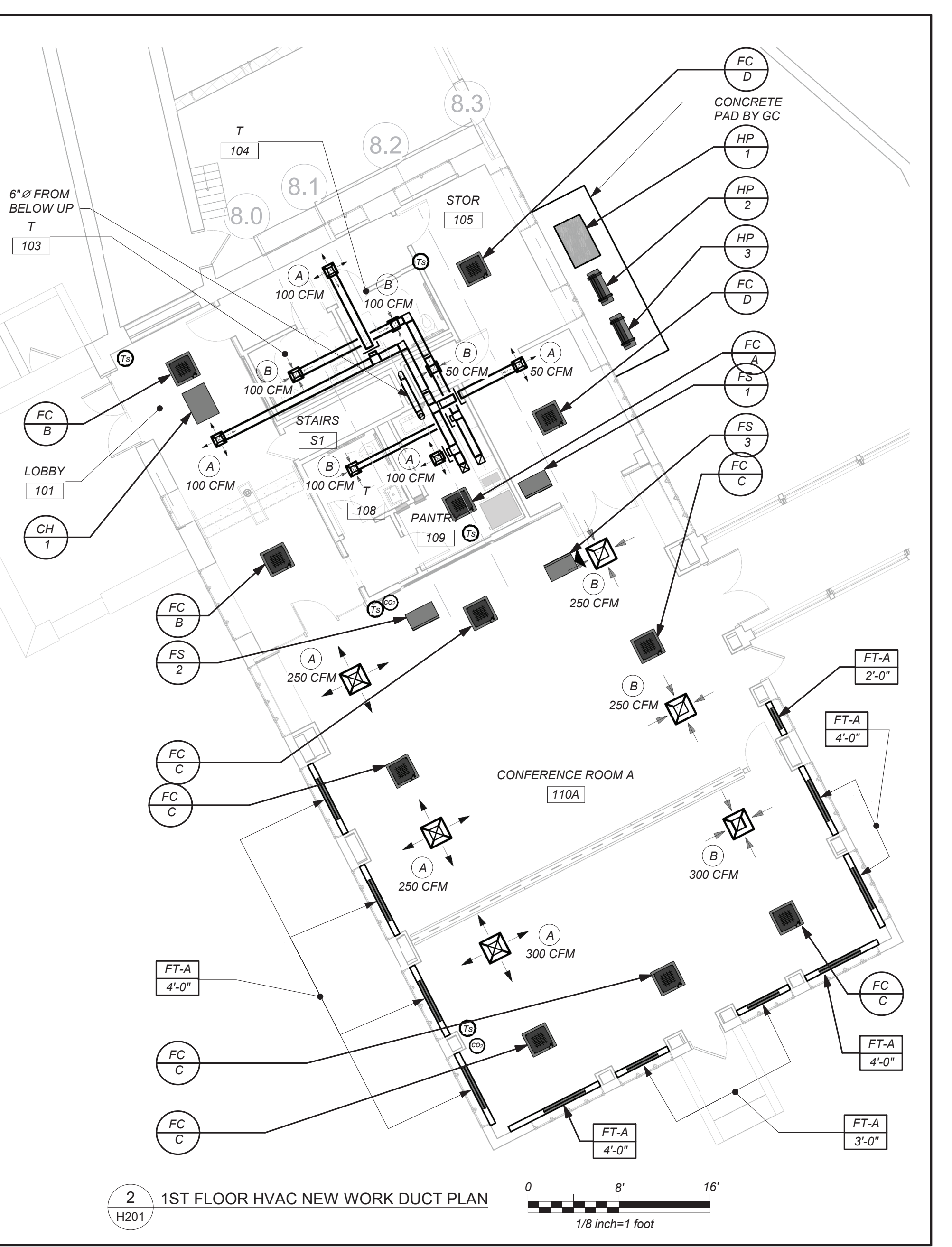
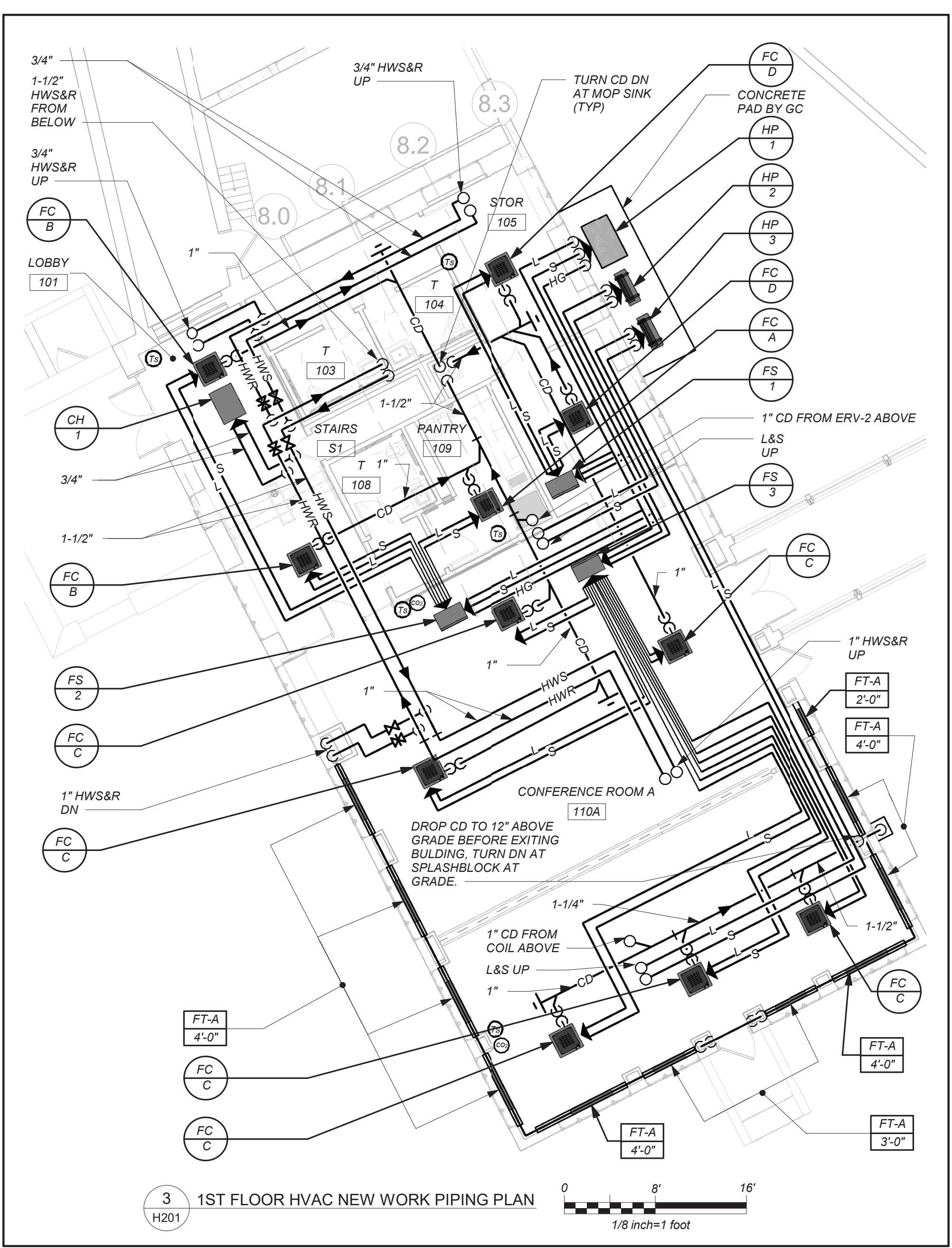
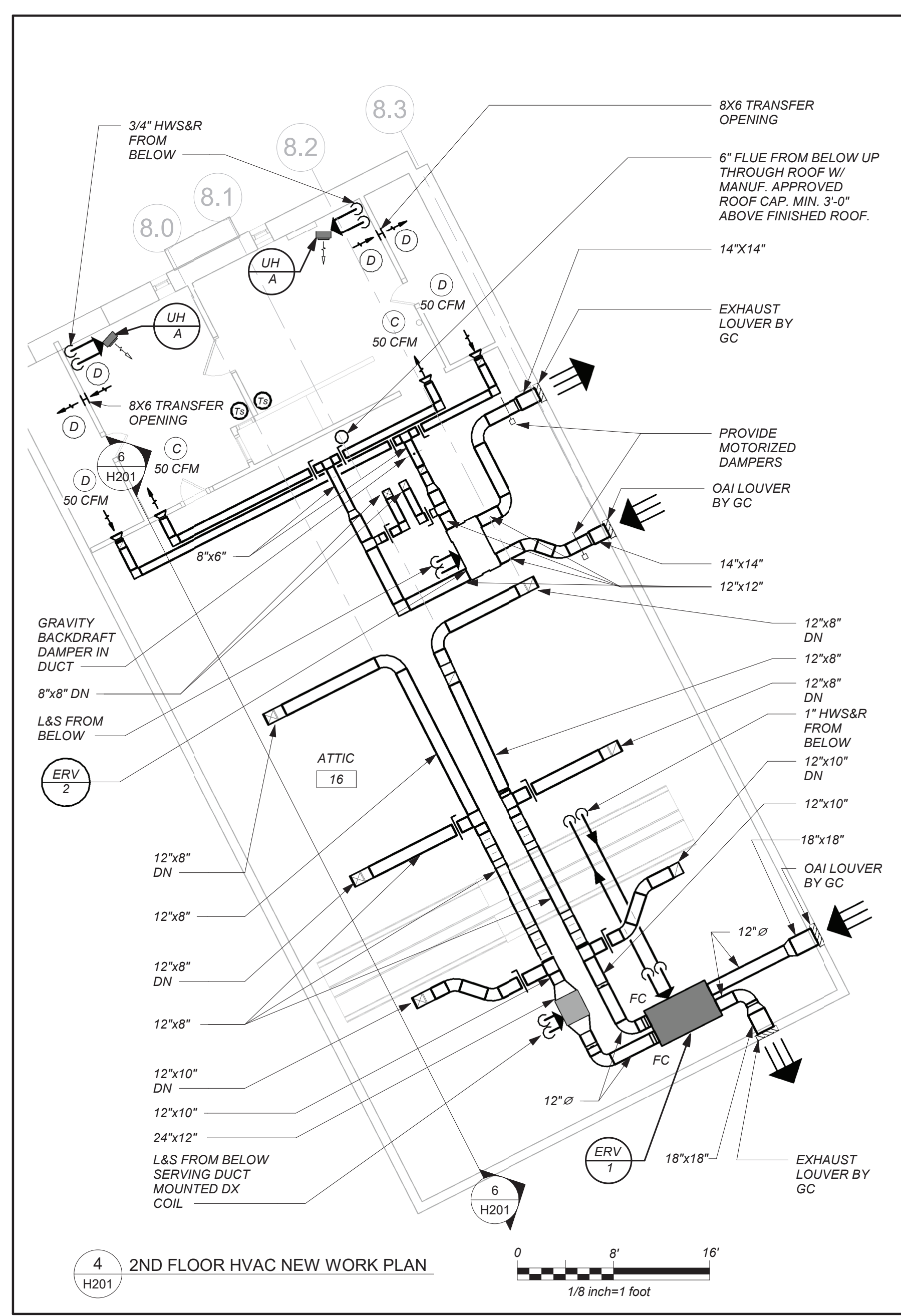


3 2ND FLOOR HVAC REMOVALS PLAN



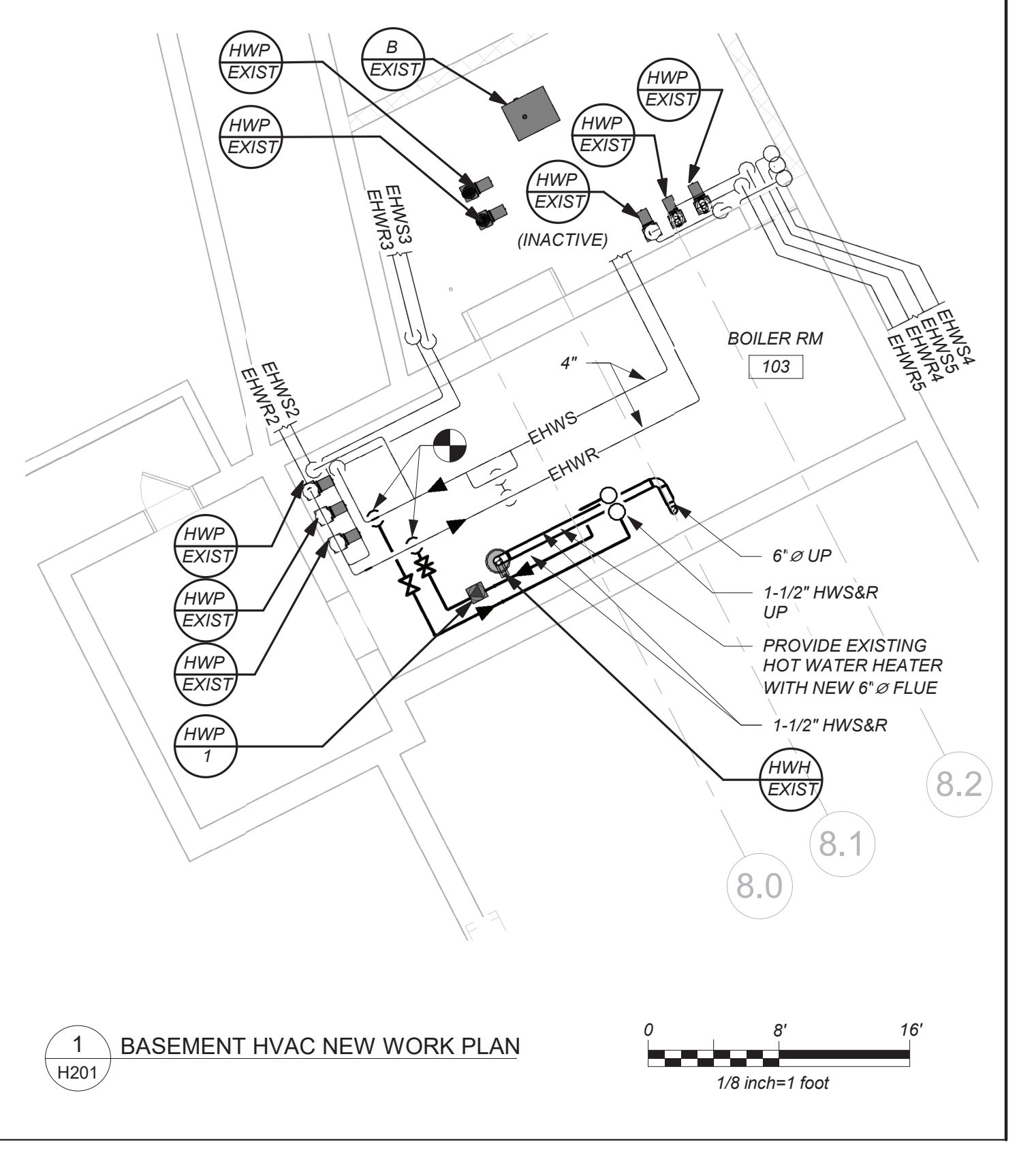
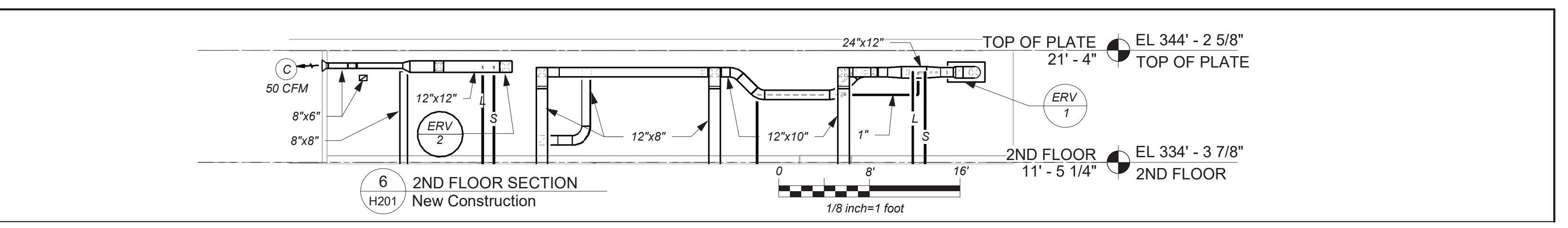
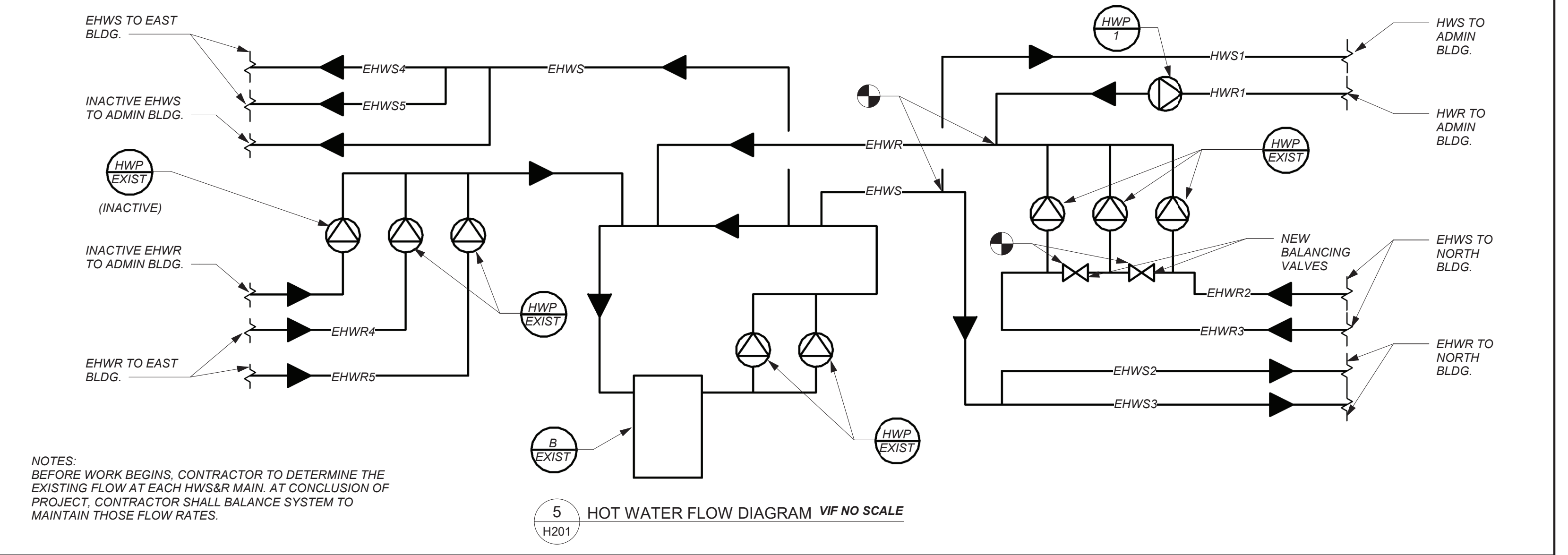
1 BASEMENT HVAC REMOVALS PLAN

BEFORE FABRICATION THIS CONTRACTOR SHALL VERIFY ALL MEASUREMENTS AND CONDITIONS ON JOB AND COORDINATE HIS WORK WITH THE WORK OF ALL THE OTHER CONTRACTORS



VRF SYSTEMS:
 THE CONTRACTOR SHALL RETAIN THE SERVICES OF THE MANUFACTURER'S REPRESENTATIVE FOR PURPOSES OF PROVIDING REFRIGERANT PIPING SIZING. CONTRACTOR SHALL PROVIDE PIPING FROM RESPECTIVE OUTDOOR UNIT TO EACH NEW INDOOR UNIT, FOR COMPLETE AND OPERABLE SYSTEMS.

CONDENSATE PIPING:
 PROVIDE CONDENSATE PIPING FOR ALL INDOOR FAN COIL EVAPORATOR UNITS AND AIR HANDLER CONDENSATE PANS.



BEFORE FABRICATION THIS CONTRACTOR SHALL VERIFY ALL MEASUREMENTS AND CONDITIONS ON JOB AND COORDINATE HIS WORK WITH THE WORK OF ALL THE OTHER CONTRACTORS

PROFESSIONAL DEVELOPMENT CENTER

NYACK UFSD

13A DICKINSON AVE
 NYACK, NY 10960

KG+D listen imagine build

KG+D . ARCHITECTS PC
 285 MAIN STREET MOUNT KISCO . NEW YORK . 10549
 P:914.666.5900 KGDARCHITECTS.COM

barle

BARILE GALLAGHER & ASSOCIATES
 CONSULTING ENGINEERS
 39 MARBLE AVE. PLEASANTVILLE, NY 10570
 PHONE: 914.328.6600 FAX: 914.328.9304 General@BGA-Eng.com

NY SED PROJECT CONTROL NO.
 66-23-00-01-0-008-011

CONSTRUCTION DOCUMENTS

KEY PLAN

NOTE: ALL IDEAS, DESIGNS, ARRANGEMENTS AND PLANS INDICATED OR REPRESENTED BY THIS DRAWING ARE OWNED BY AND ARE THE PROPERTY OF KAEYER, GARMENT, & DAVIDSON ARCHITECTS, PC (KGAD) AND WERE CREATED FOR USE ON THIS PROJECT. NONE OF SUCH IDEAS, DESIGNS, ARRANGEMENTS OR PLANS SHALL BE USED BY OR DISCLOSED TO ANY PURPOSE WHATSOEVER WITHOUT THE WRITTEN PERMISSION OF KGAD.

WRITTEN DIMENSIONS ON THIS DRAWING SHALL HAVE PRECEDENCE OVER SCALED DIMENSIONS. CONTRACTOR SHALL VERIFY ALL ACTUAL DIMENSIONS AND CONDITIONS ON THE JOB AND THE ARCHITECT MUST BE NOTIFIED OF ANY VARIATIONS FROM DIMENSIONS AND CONDITIONS SHOWN. SHOP DETAILS MUST BE SUBMITTED TO THIS OFFICE FOR APPROVAL, BEFORE PROCEEDING WITH FABRICATION.

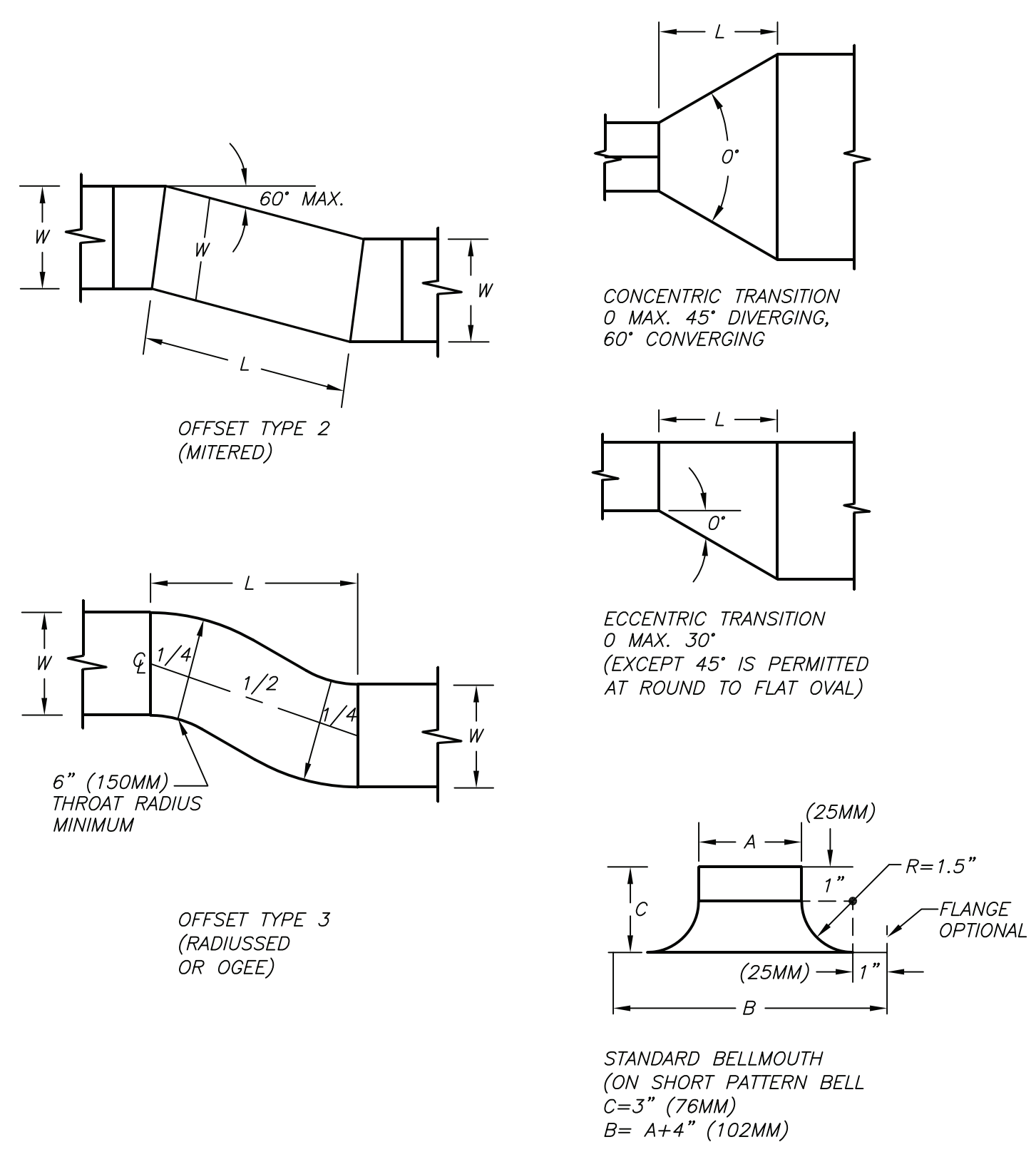
ALTERATIONS BY ANY PERSON, IN ANY WAY, OF ANY ITEM CONTAINED IN THIS DOCUMENT, UNLESS ACTING UNDER THE DIRECTION OF THE LICENSED ARCHITECT IN WISE PROFESSIONAL SEAL, IS A VIOLATION OF TITLE V.B. SECT. 69.3 (b) OF NEW YORK STATE LAW. COPYRIGHT KAEYER, GARMENT & DAVIDSON ARCHITECTS & ENGINEERS, PC. ALL RIGHTS RESERVED.

No.	Date	Issue
2	2022-07-12	ISSUE FOR BID
1	2022-03-24	CONSTRUCTION DOCUMENTS

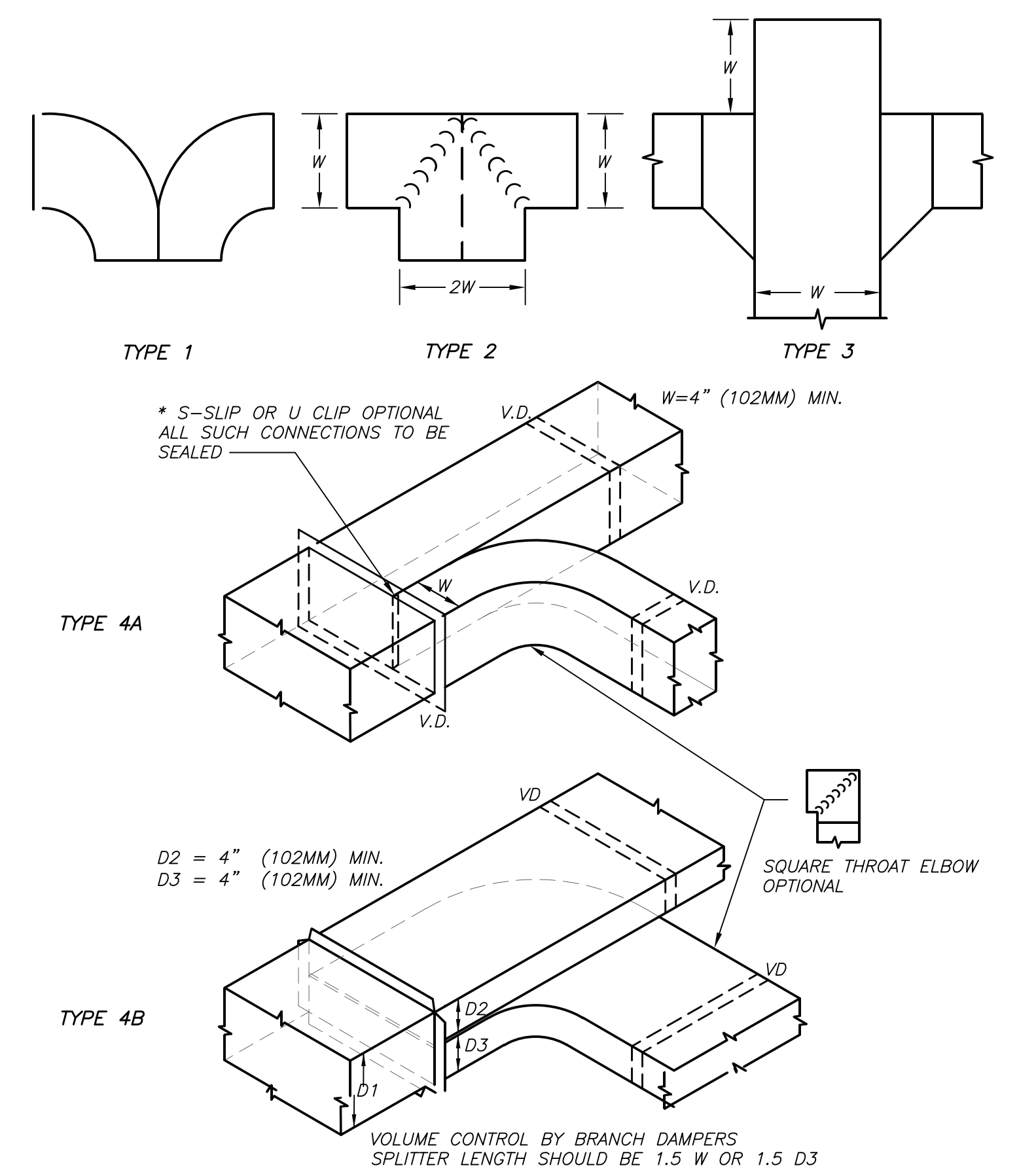
Professional Seal

PART BASEMENT, 1ST, & 2ND FLOOR PLANS (NEW WORK)

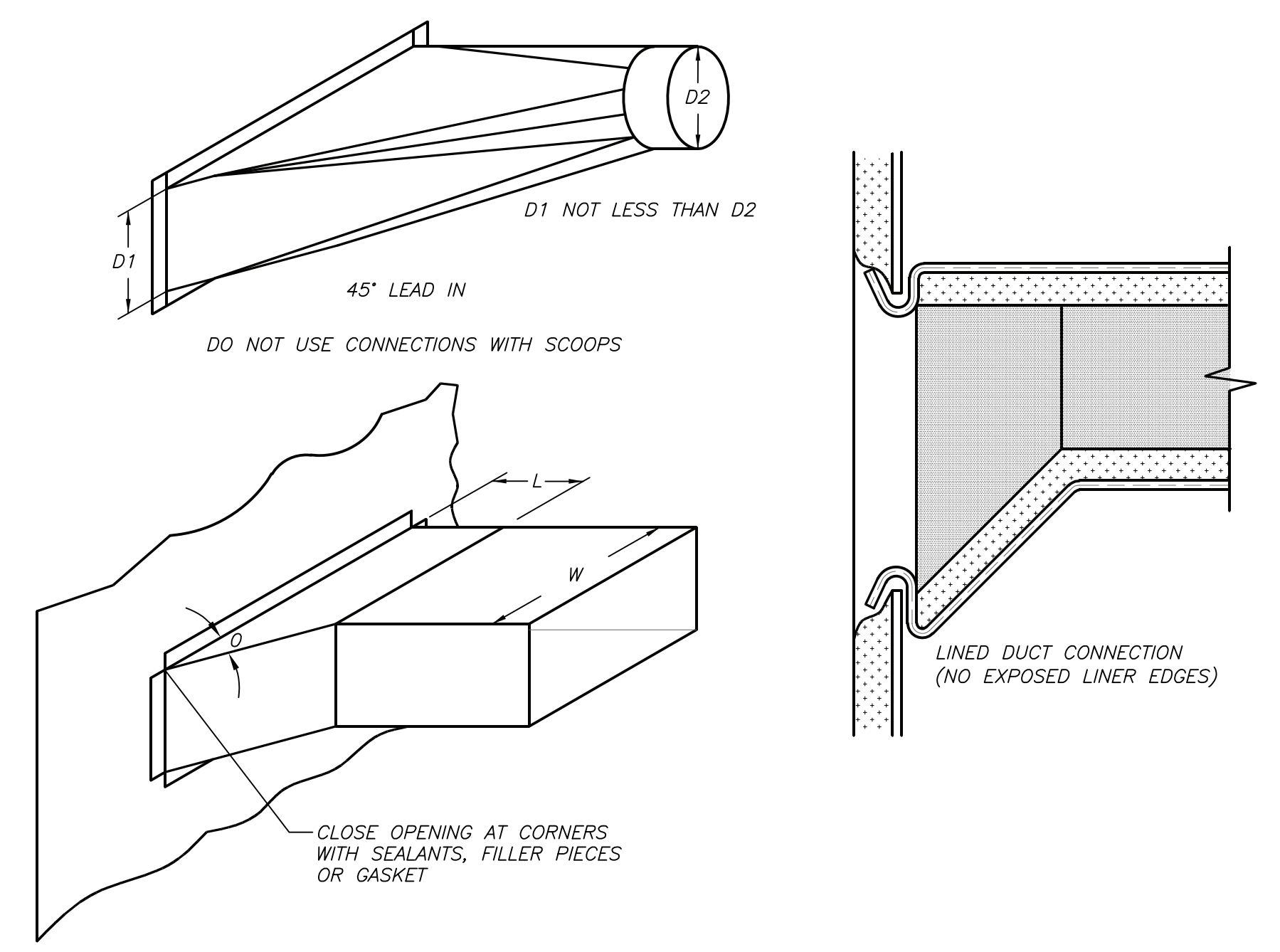
Job No. 2021-1048 Date 09/10/2021
 Scale AS NOTED Drawn / Checked BGA / BGA
 Sheet Number **H201**



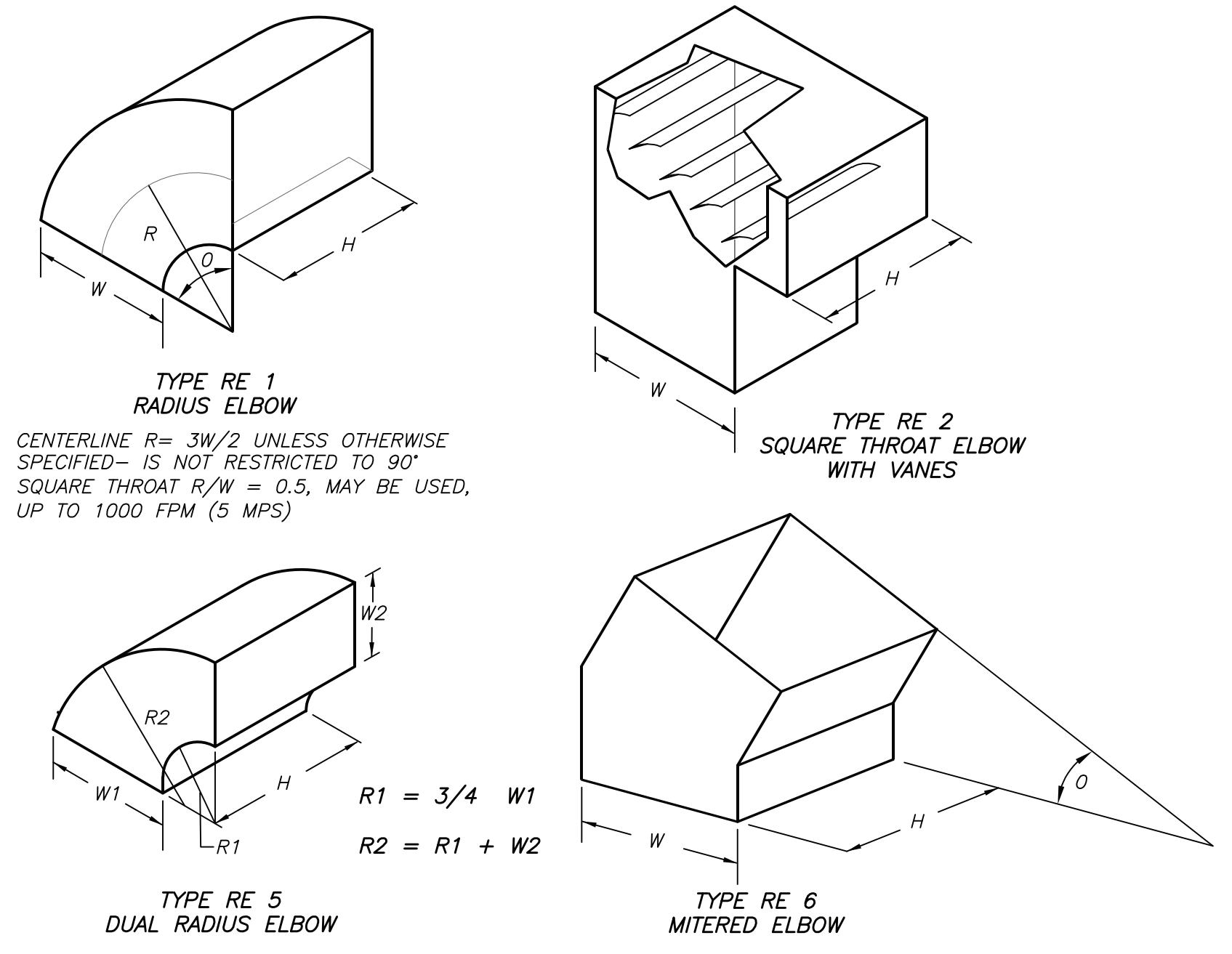
DUCT OFFSETS AND TRANSITIONS DETAIL (7) H401 NO SCALE



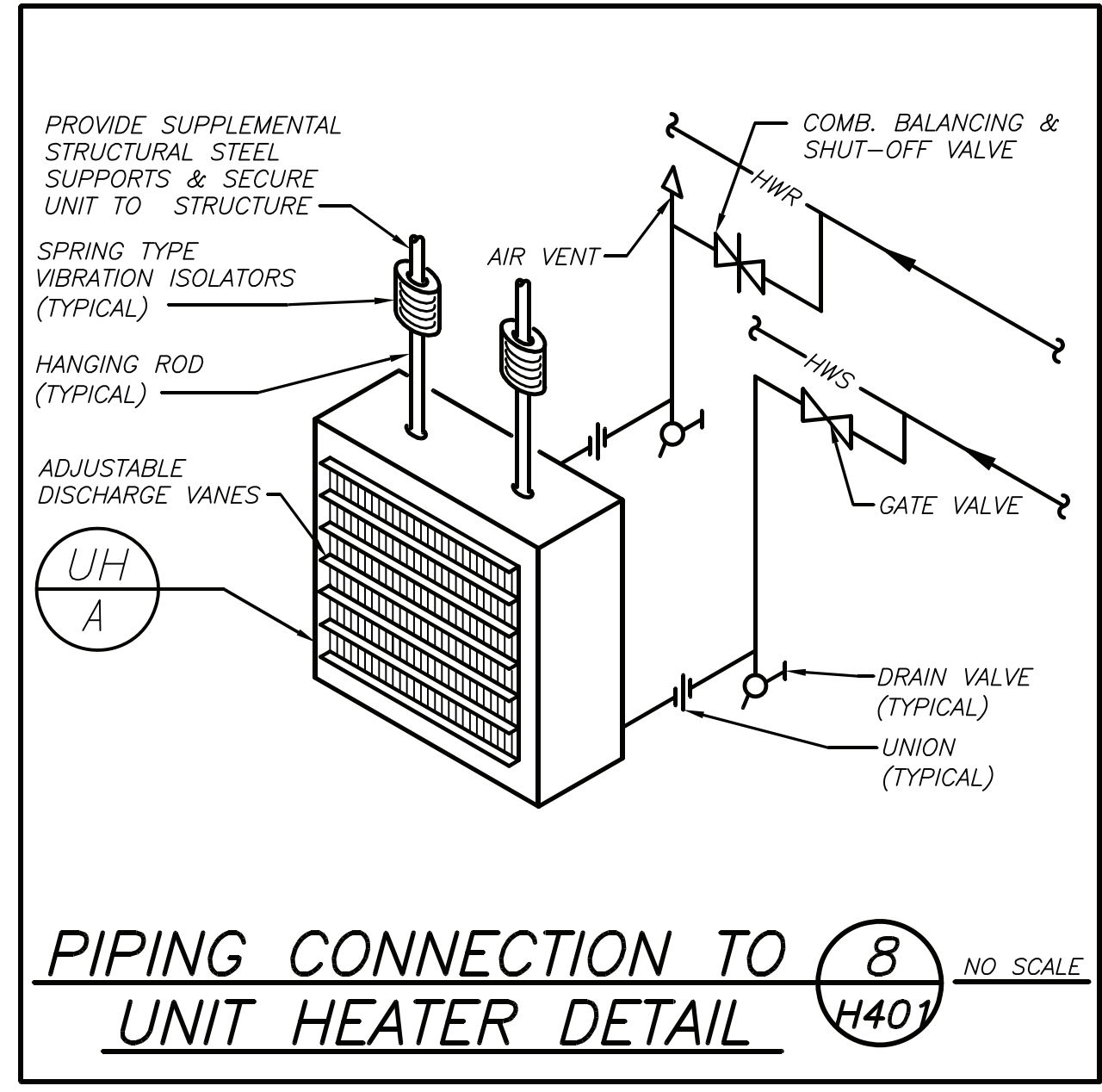
DUCT DIVIDED FLOW BRANCHES DETAIL (4) H401 NO SCALE



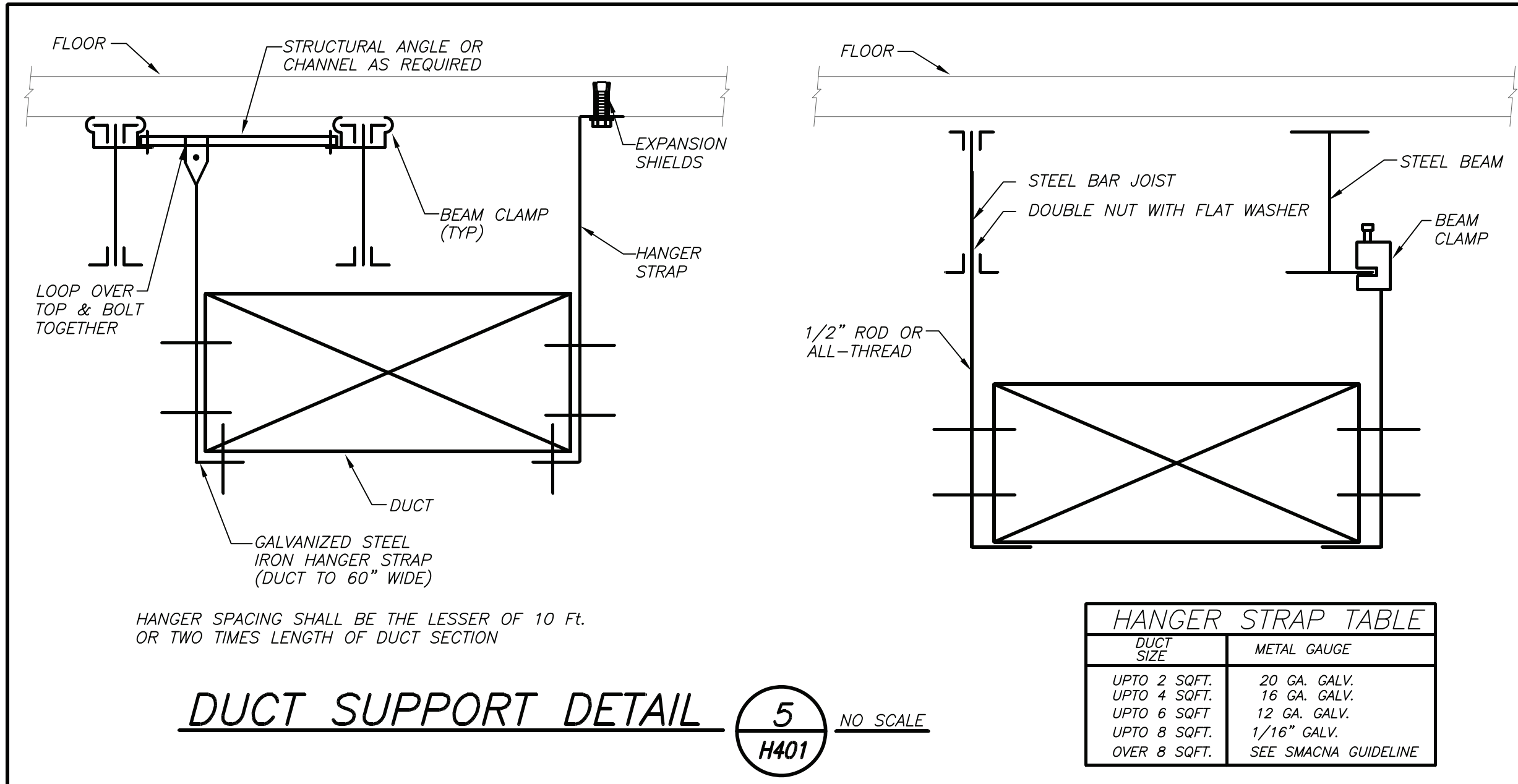
DUCT BRANCH CONNECTIONS DETAIL (1) H401 NO SCALE



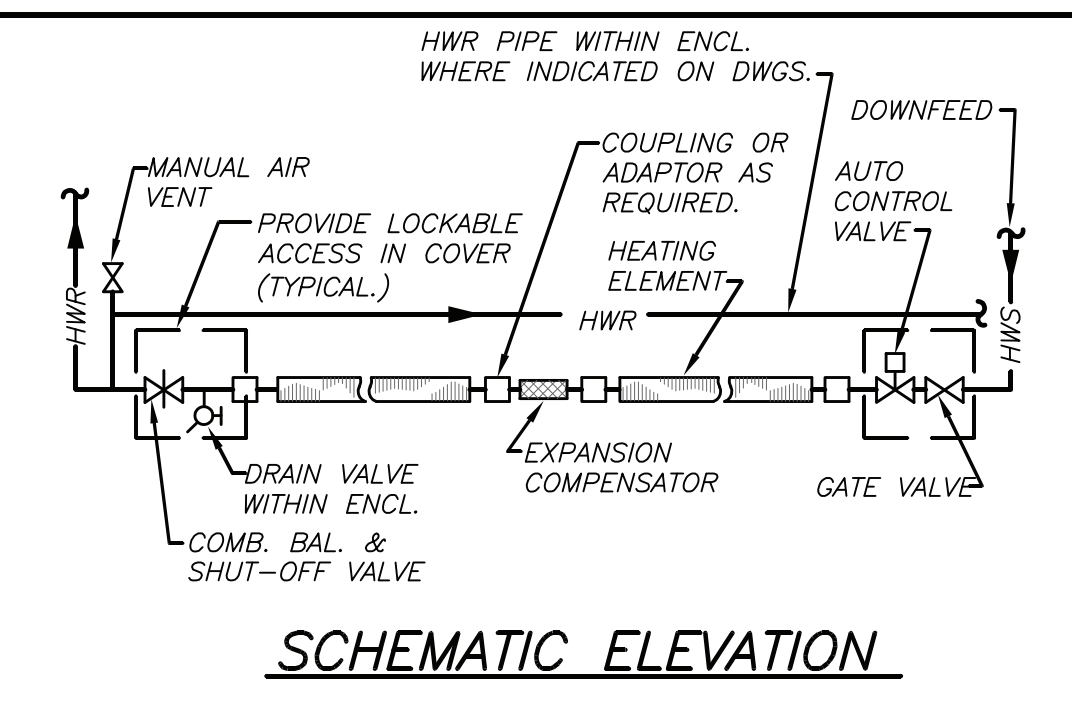
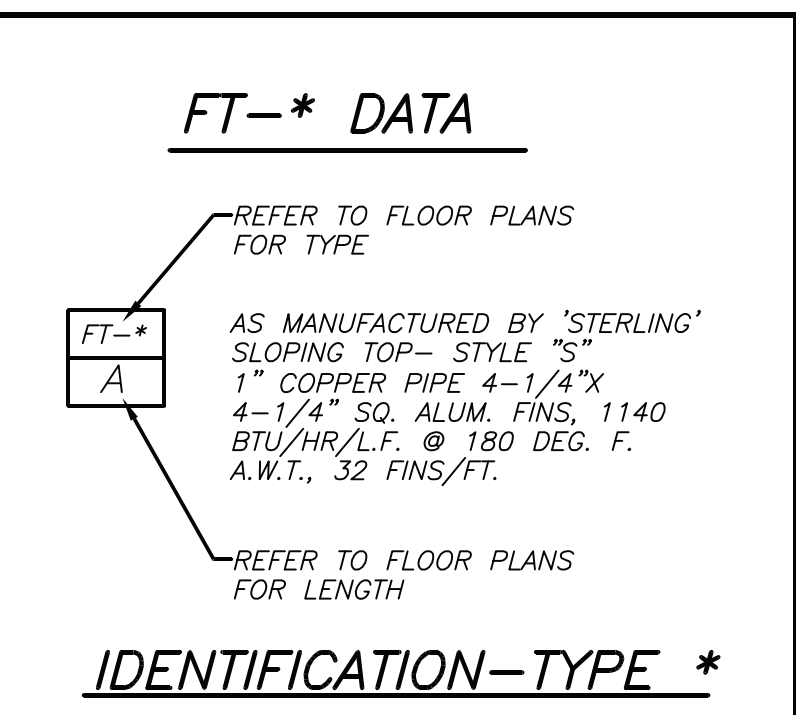
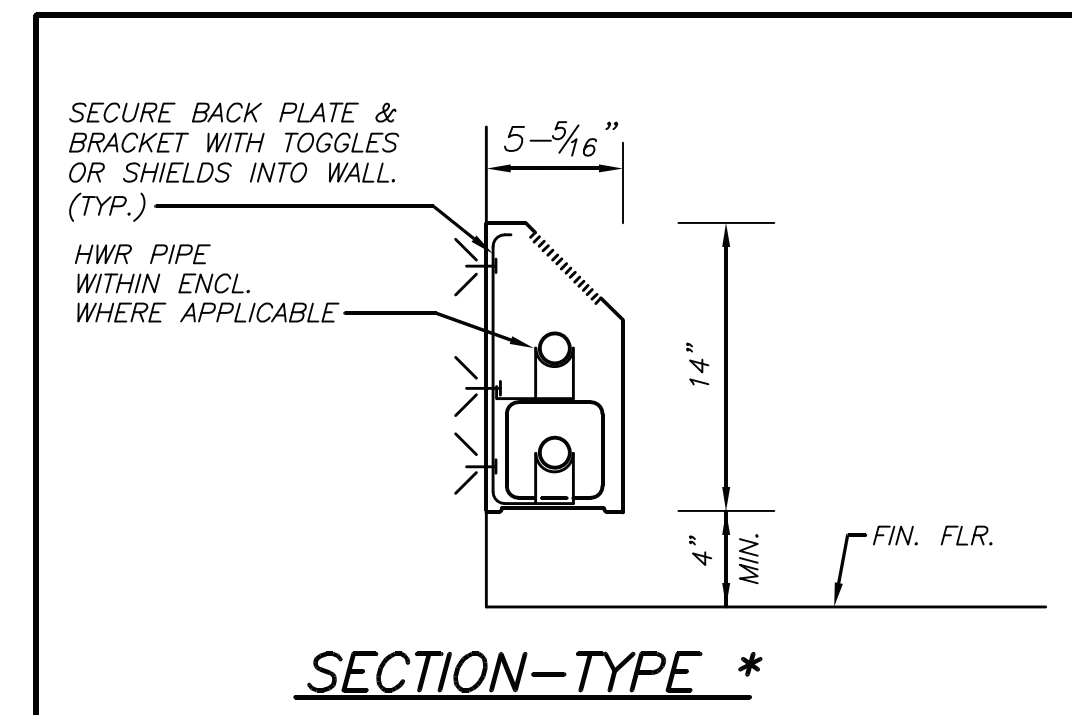
DUCT RECTANGULAR ELBOWS DETAIL (2) H401 NO SCALE



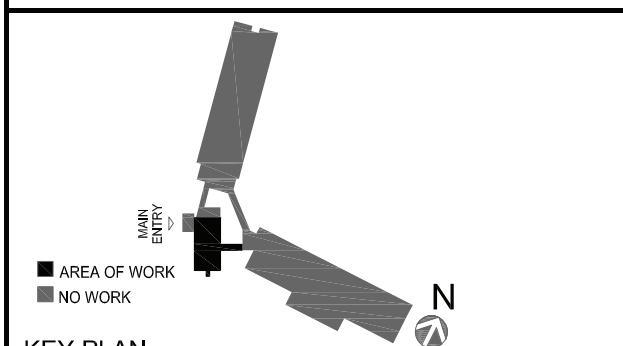
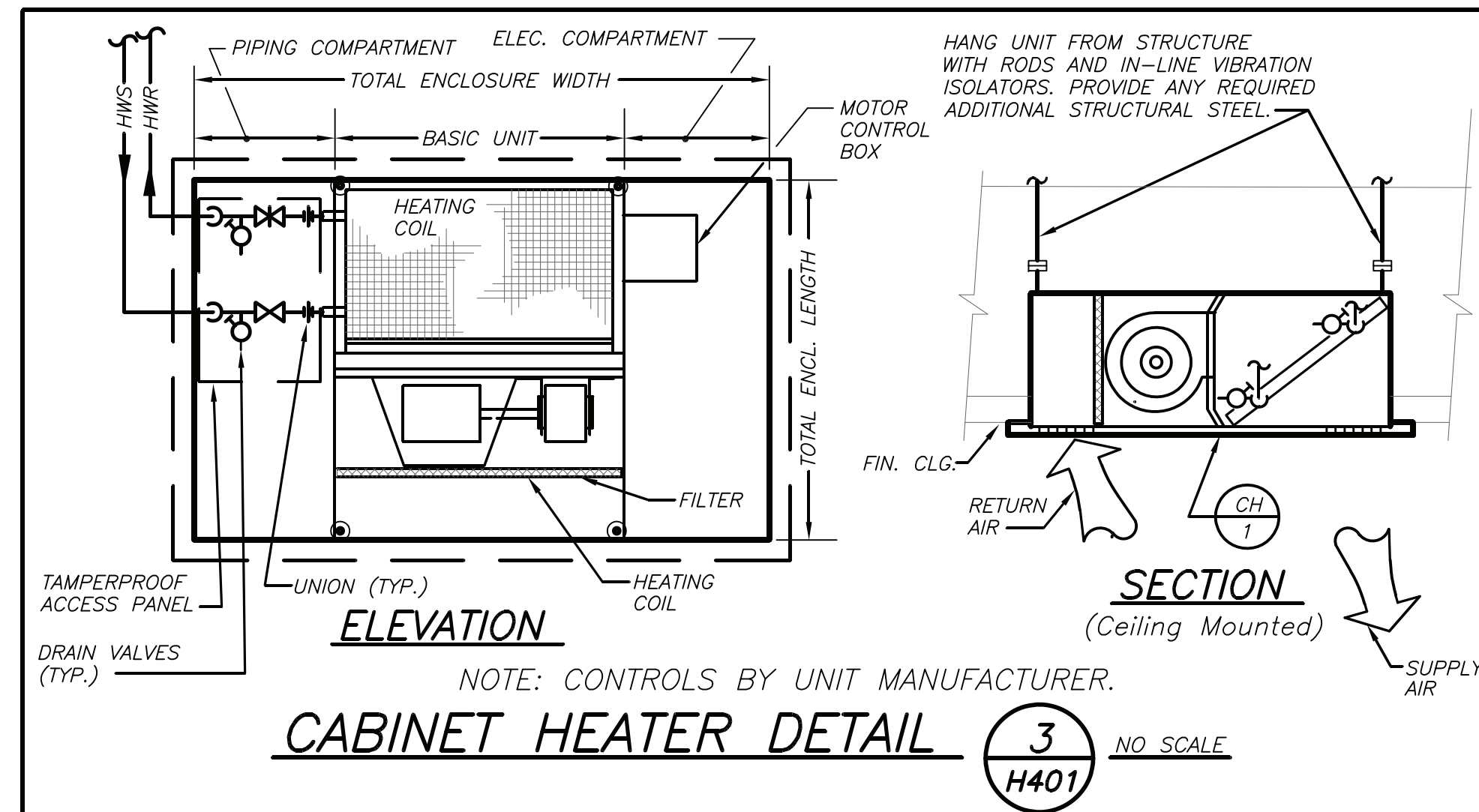
PIPING CONNECTION TO UNIT HEATER DETAIL (8) H401 NO SCALE



DUCT SUPPORT DETAIL (5) H401 NO SCALE



FIN TUBE RADIATION DETAIL (HOT WATER) (6) H401 NO SCALE



NOTE: ALL IDEAS, DESIGNS, ARRANGEMENTS AND PLANS INDICATED OR REPRESENTED BY THIS DRAWING ARE OWNED BY AND ARE THE PROPERTY OF KAYEY, GARMENT & DAVIDSON ARCHITECTS, P.C. (KGD), AND WERE CREATED FOR USE ON THE PROJECT. NONE OF SUCH IDEAS, DESIGNS, ARRANGEMENTS OR PLANS SHALL BE USED BY OR DISCLOSED TO ANY PURPOSE WHATSOEVER WITHOUT THE WRITTEN PERMISSION OF KGD.

WRITTEN DIMENSIONS ON THIS DRAWING SHALL HAVE PRECEDENCE OVER SCALED DIMENSIONS. CONTRACTOR SHALL VERIFY ALL ACTUAL DIMENSIONS AND CONDITIONS ON THE JOB AND THE ARCHITECT MUST BE NOTIFIED OF ANY VARIATIONS FROM DIMENSIONS AND CONDITIONS SHOWN. SHOP DETAILS MUST BE SUBMITTED TO THIS OFFICE FOR APPROVAL BEFORE PROCEEDING WITH FABRICATION.

ALTERATIONS BY ANY PERSON, IN ANY WAY, OF ANY ITEM CONTAINED ON THIS DOCUMENT UNLESS ACTING UNDER THE DIRECTION OF THE LICENSED ARCHITECT (WHOSE PROFESSIONAL SEAL IS AFFIXED HERETO) IS A VIOLATION OF TITLE 16, SECT. 80.3 (b) OF NEW YORK STATE LAW.
COPYRIGHT © KAYEY, GARMENT & DAVIDSON ARCHITECTS & ENGINEERS, P.C. ALL RIGHTS RESERVED.

Professional Seal

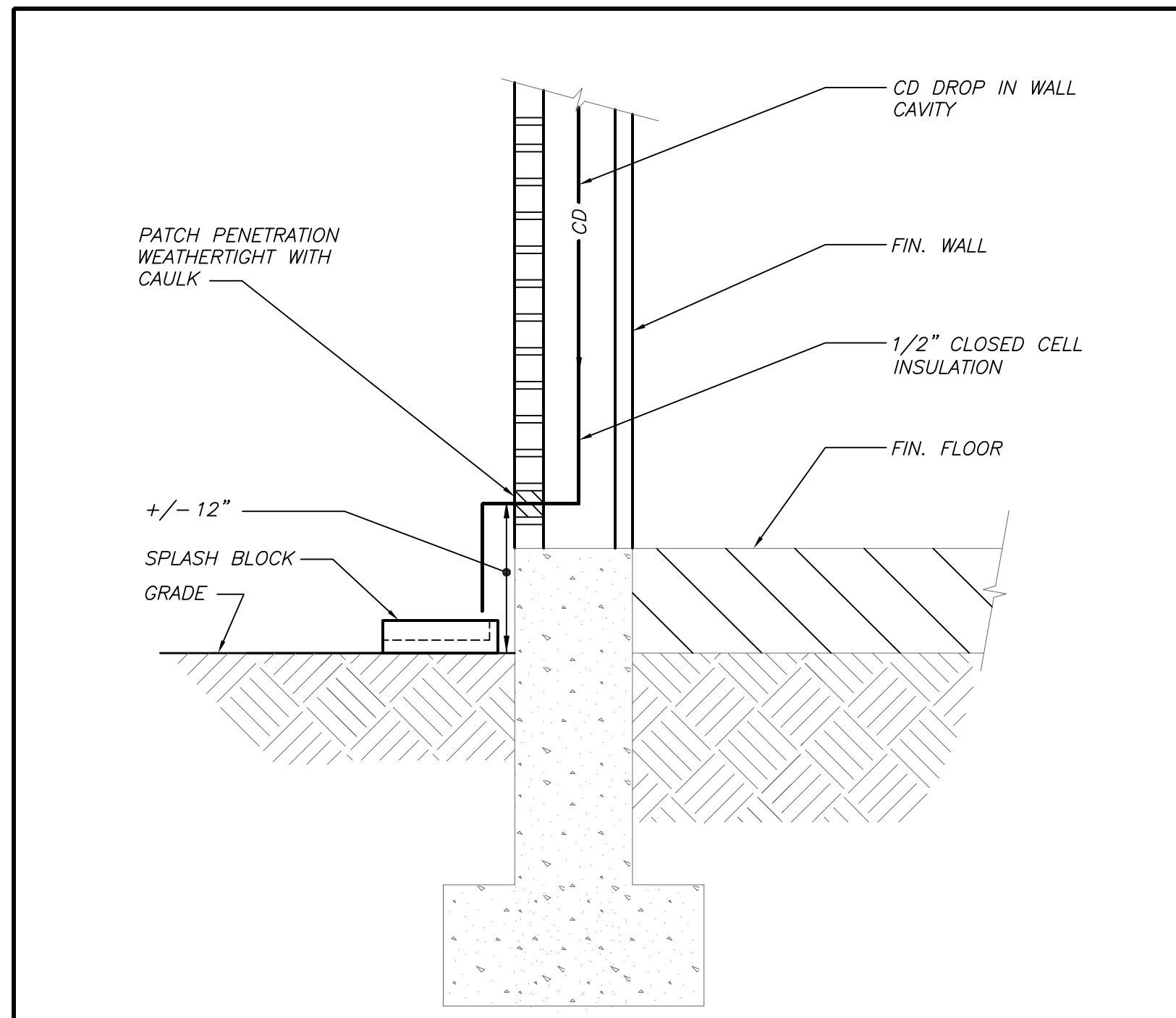
No.	Date	Issue
2	2022-07-12	ISSUE FOR BID
1	2022-03-24	CONSTRUCTION DOCUMENTS

DETAILS

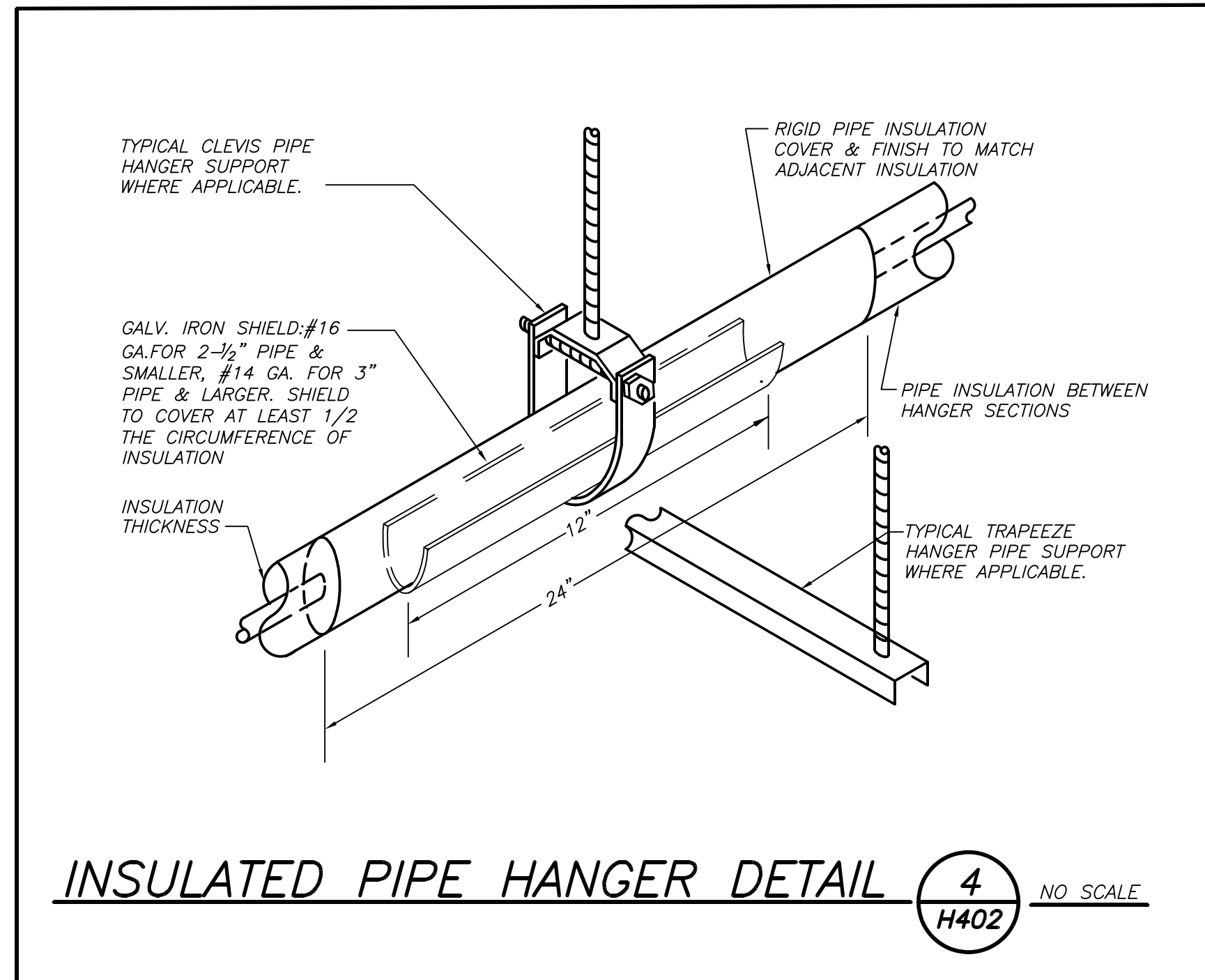
Job No.	Date
2021-1048	09/10/2021

Scale	Drawn / Checked
AS NOTED	BGA / BGA

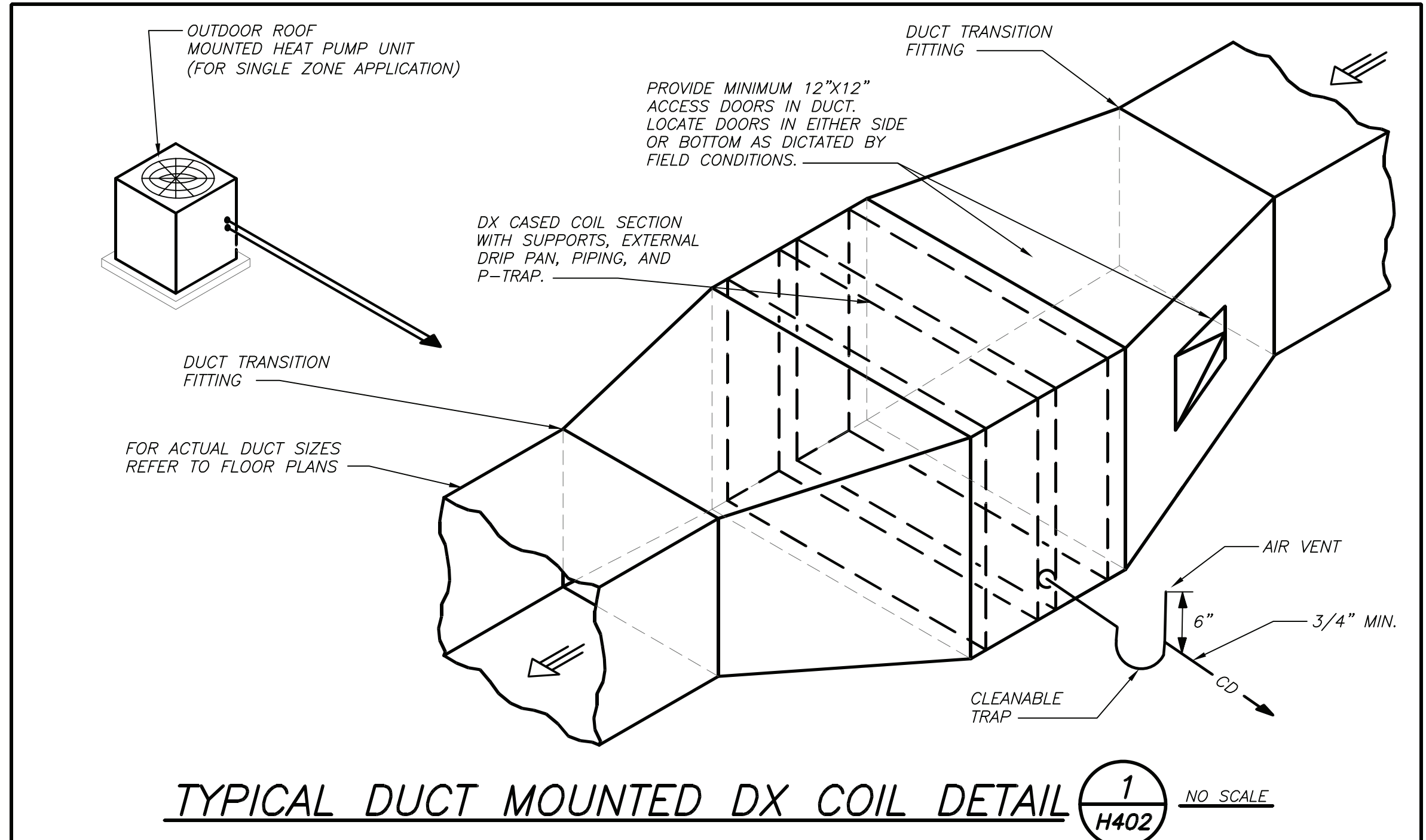
Sheet Number
H401



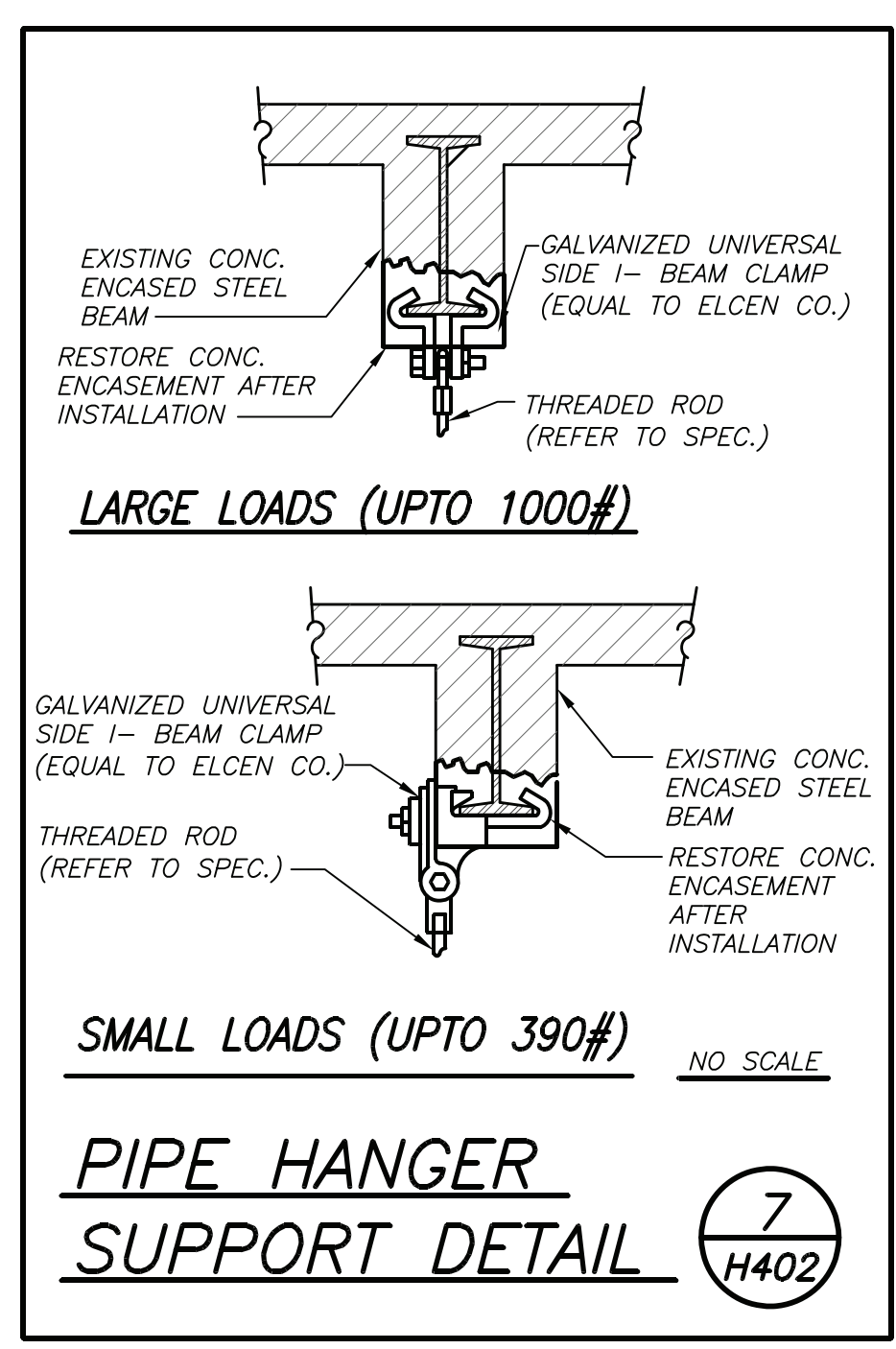
CONDENSATE DRAIN THROUGH EXTERIOR WALL DETAIL 8 NO SCALE
H402



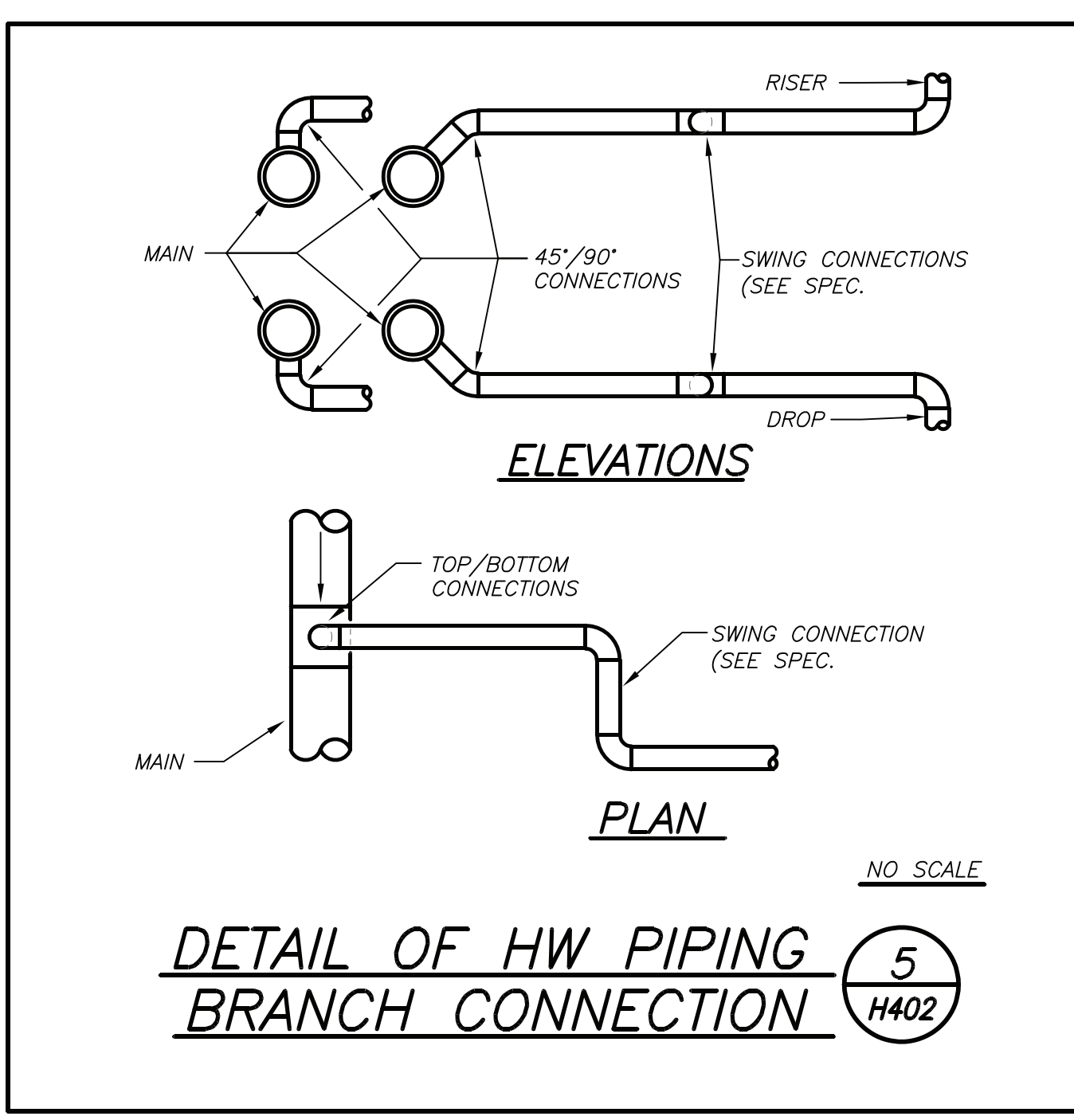
INSULATED PIPE HANGER DETAIL 4 NO SCALE
H402



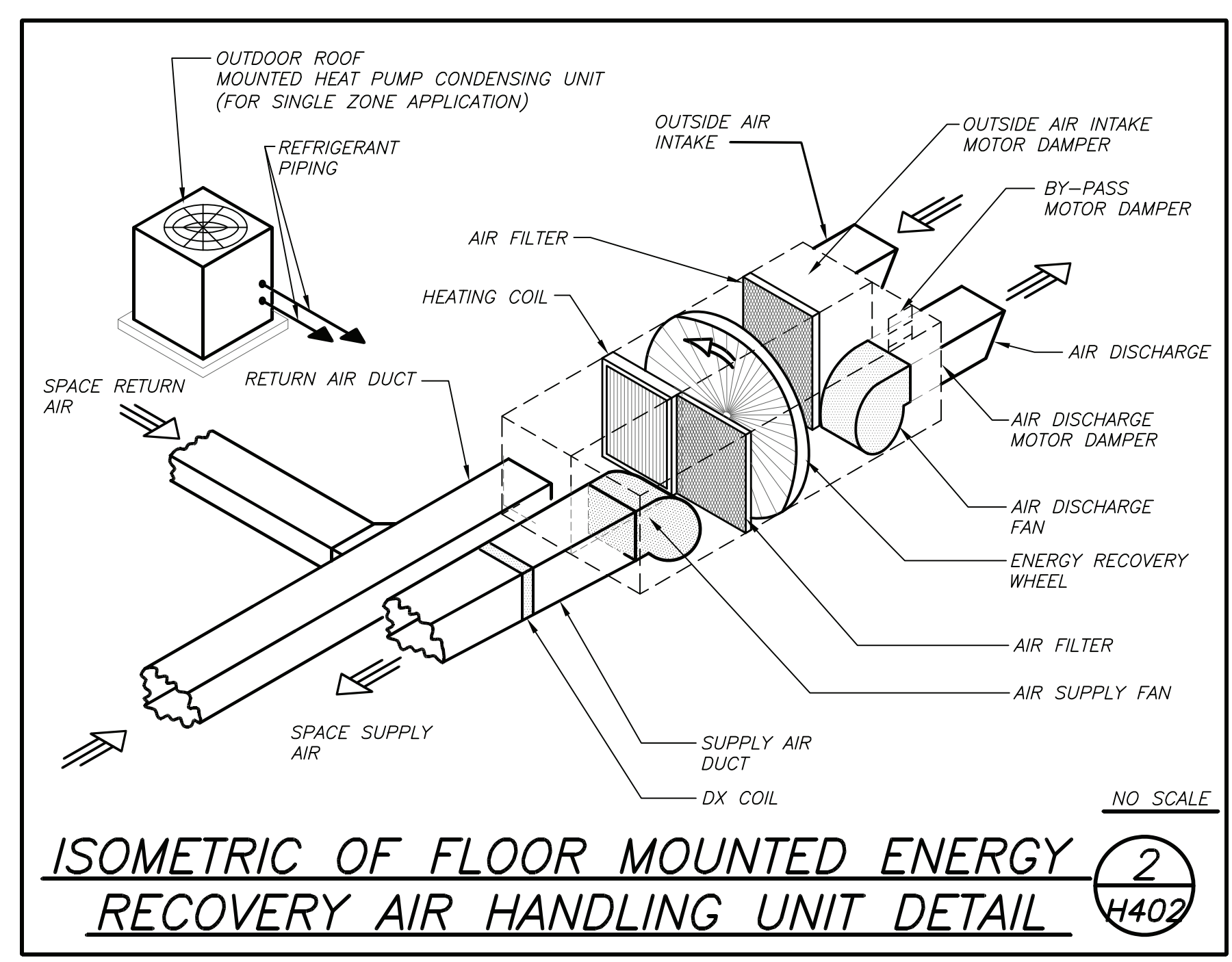
TYPICAL DUCT MOUNTED DX COIL DETAIL 1 NO SCALE
H402



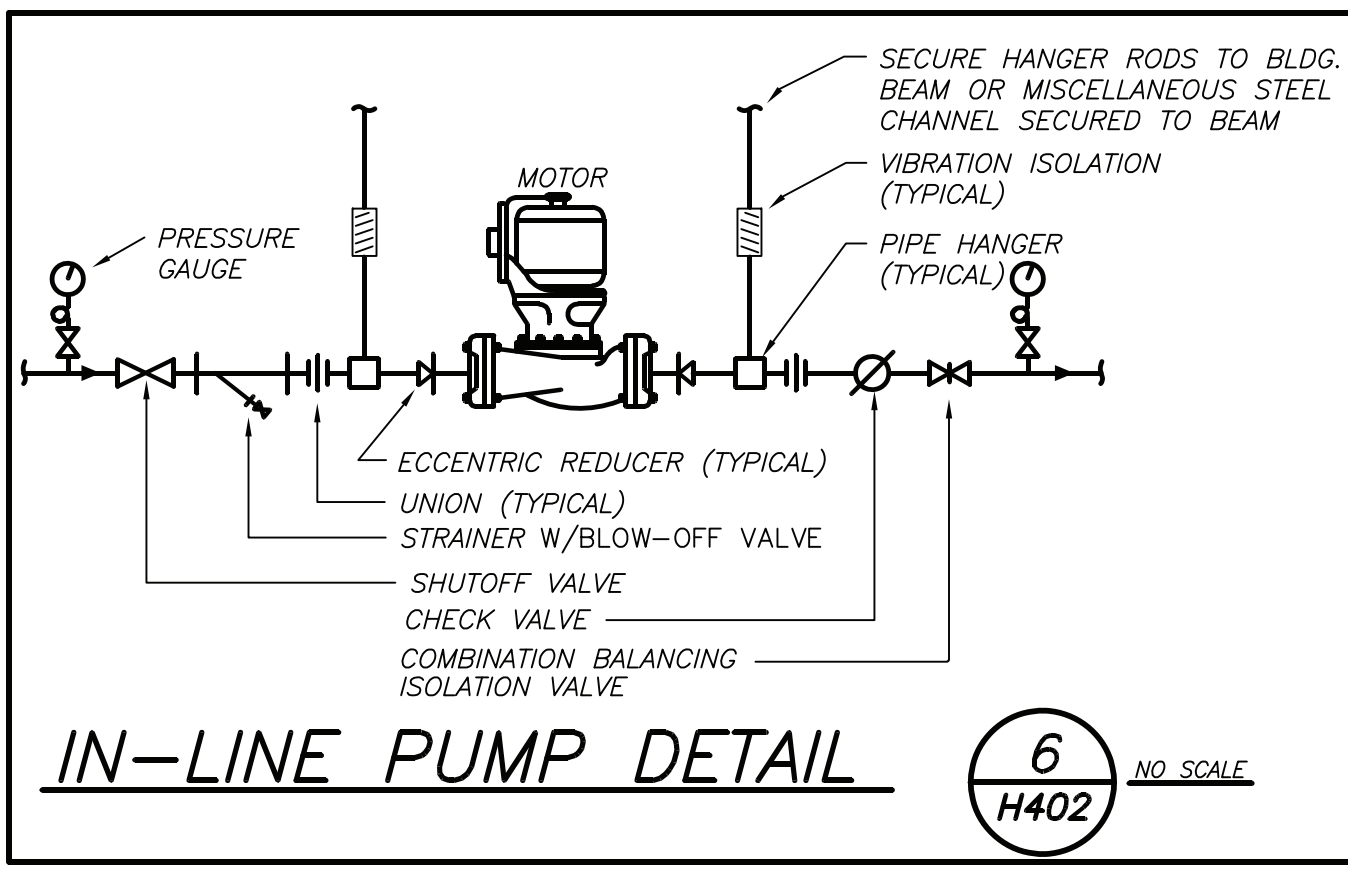
PIPE HANGER SUPPORT DETAIL 7 NO SCALE
H402



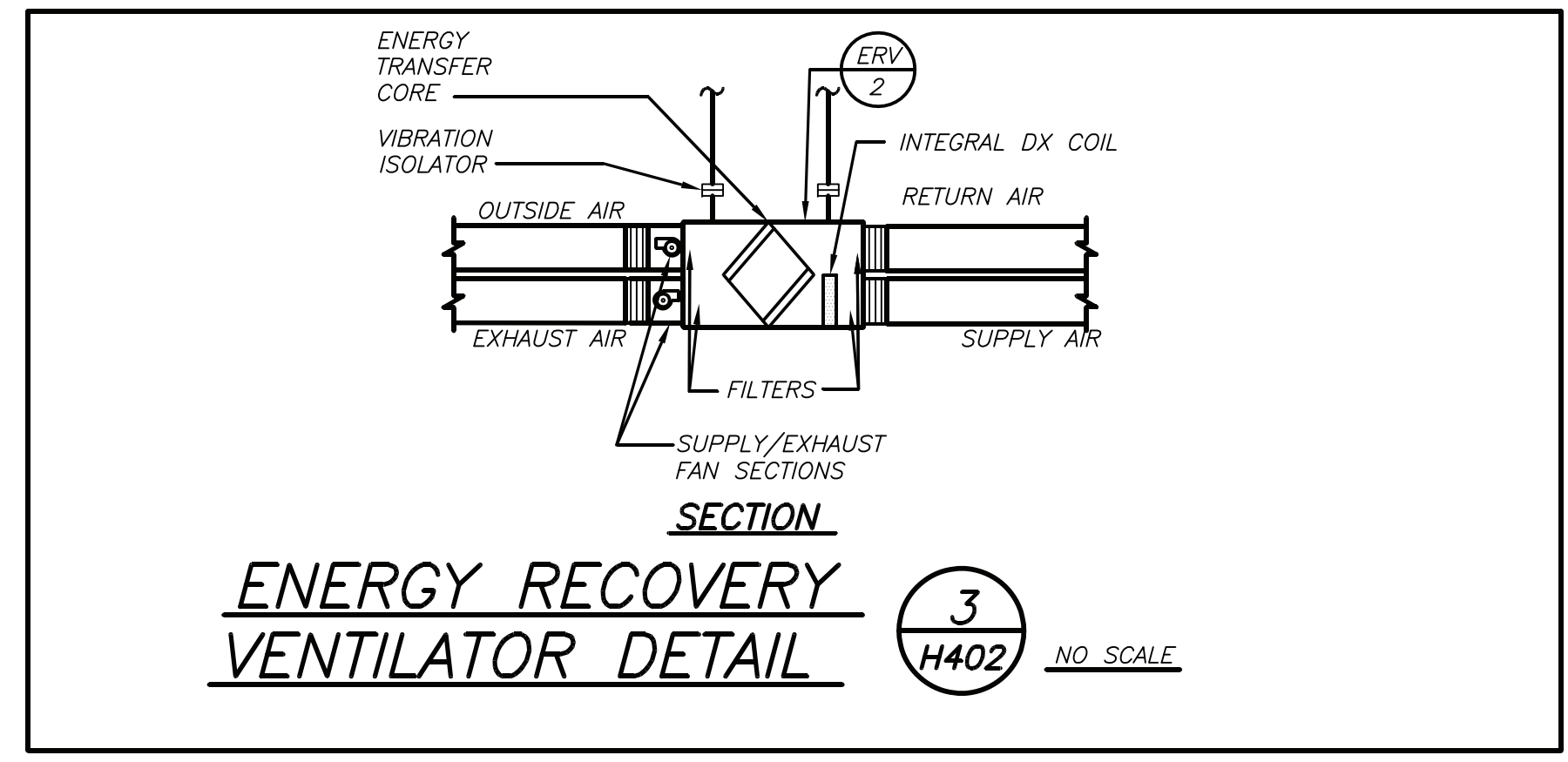
DETAIL OF HW PIPING BRANCH CONNECTION 5 NO SCALE
H402



ISOMETRIC OF FLOOR MOUNTED ENERGY RECOVERY AIR HANDLING UNIT DETAIL 2 NO SCALE
H402



IN-LINE PUMP DETAIL 6 NO SCALE
H402



ENERGY RECOVERY VENTILATOR DETAIL 3 NO SCALE
H402

PROFESSIONAL DEVELOPMENT CENTER

NYACK UFSO

13A DICKINSON AVE
NYACK, NY 10960

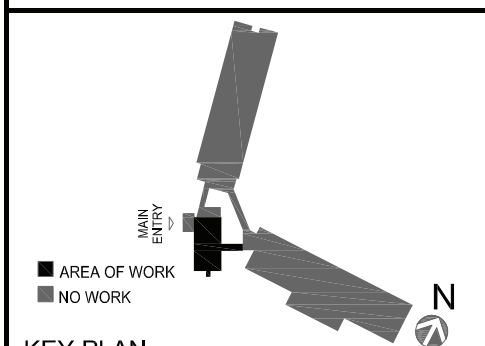
KG+D listen imagine build
KG+D . ARCHITECTS PC
285 MAIN STREET MOUNT KISCO, NEW YORK . 10549
P:914.666.5900 KGDARCHITECTS.COM



BARILE GALLAGHER & ASSOCIATES

CONSULTING ENGINEERS
39 MARBLE AVE. PLEASANTVILLE, NY 10570
914.328.6060 GENERAL@BGA-ENG.COM WWW.BGA-ENG.COM
NY SED PROJECT CONTROL NO.
66-23-00-01-0-008-011

CONSTRUCTION DOCUMENTS



KEY PLAN
NOTE: ALL IDEAS, DESIGNS, ARRANGEMENTS AND PLANS INDICATED OR REPRESENTED BY THIS DRAWING ARE OWNED BY AND ARE THE PROPERTY OF KAUFER, GARMENT & DAVIDSON ARCHITECTS, PC (KGAD), AND WHERE CREATED FOR USE ON THIS PROJECT NONE OF SUCH IDEAS, DESIGNS, ARRANGEMENTS OR PLANS SHALL BE USED BY OR DISCLOSED TO ANY PURPOSE WHATSOEVER WITHOUT THE WRITTEN PERMISSION OF (KGAD).
WRITTEN DIMENSIONS ON THIS DRAWING SHALL HAVE PRECEDENCE OVER SCALED DIMENSIONS. CONTRACTOR SHALL VERIFY ALL ACTUAL DIMENSIONS AND CONDITIONS ON THE JOB AND THE ARCHITECT MUST BE NOTIFIED OF ANY VARIATIONS FROM DIMENSIONS AND CONDITIONS SHOWN. SHOP DETAILS MUST BE SUBMITTED TO THIS OFFICE FOR APPROVAL BEFORE PROCEEDING WITH FABRICATION.
ALTERATIONS BY ANY PERSON, IN ANY WAY, OF ANY ITEM CONTAINED ON THIS DOCUMENT UNLESS ACTING UNDER THE DIRECTION OF THE LICENSED ARCHITECT IN HIS PROFESSIONAL SEAL IS APPLIED HERETO, IS A VIOLATION OF TITLE 16, SECT. 66.3 (b) OF NEW YORK STATE LAW.
COPYRIGHT KAUFER, GARMENT & DAVIDSON ARCHITECTS & ENGINEERS, PC. ALL RIGHTS RESERVED.

Professional Seal

2	2022-07-12	ISSUE FOR BID
1	2022-03-24	CONSTRUCTION DOCUMENTS
No.	Date	Issue

DETAILS

Job No.	2021-1048	Date	09/10/2021
Scale	AS NOTED	Drawn / Checked	BGA / BGA

Sheet Number
H402

BEFORE FABRICATION THIS CONTRACTOR SHALL VERIFY ALL MEASUREMENTS AND CONDITIONS ON JOB AND COORDINATE HIS WORK WITH THE WORK OF ALL OTHER CONTRACTORS