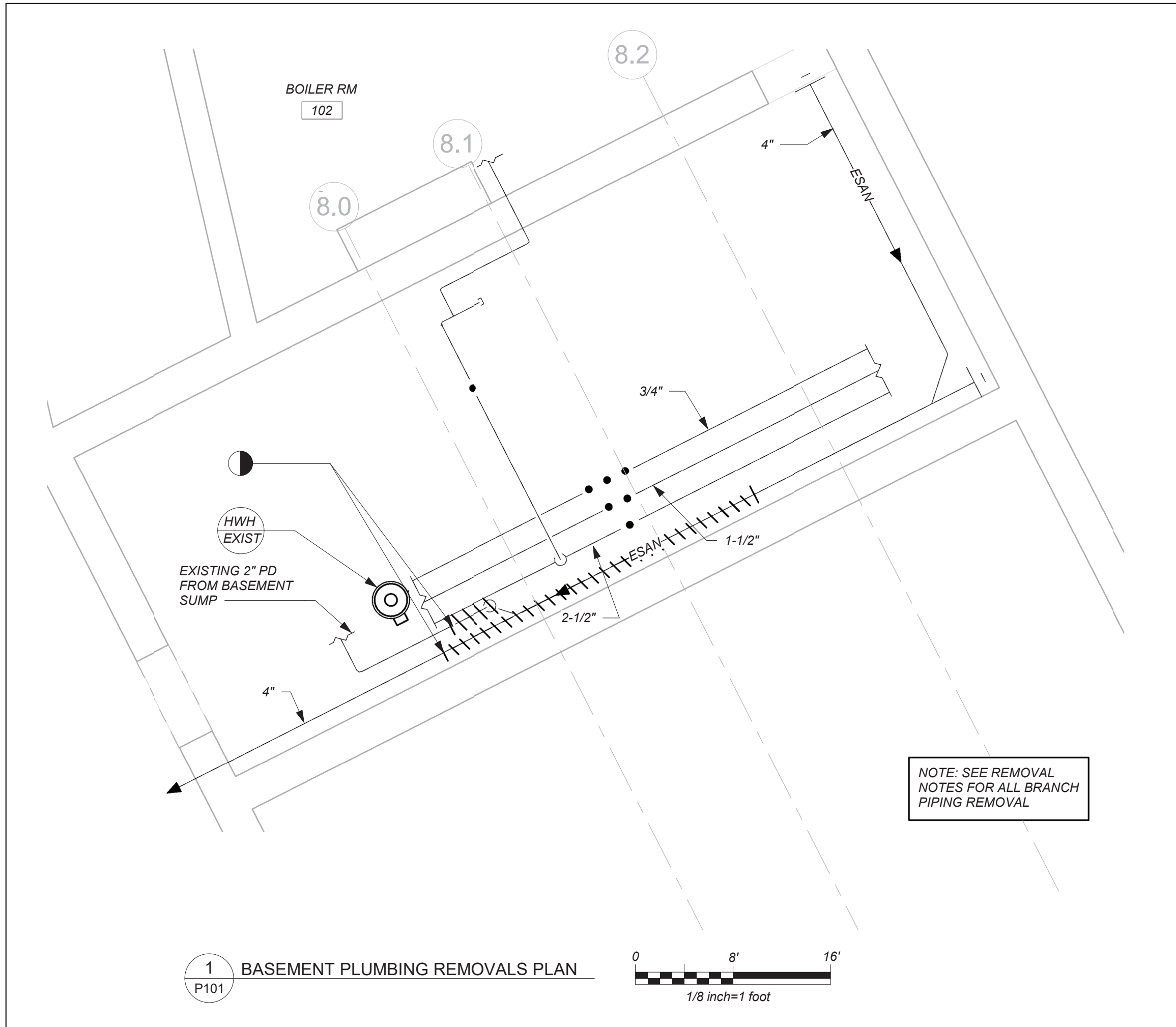
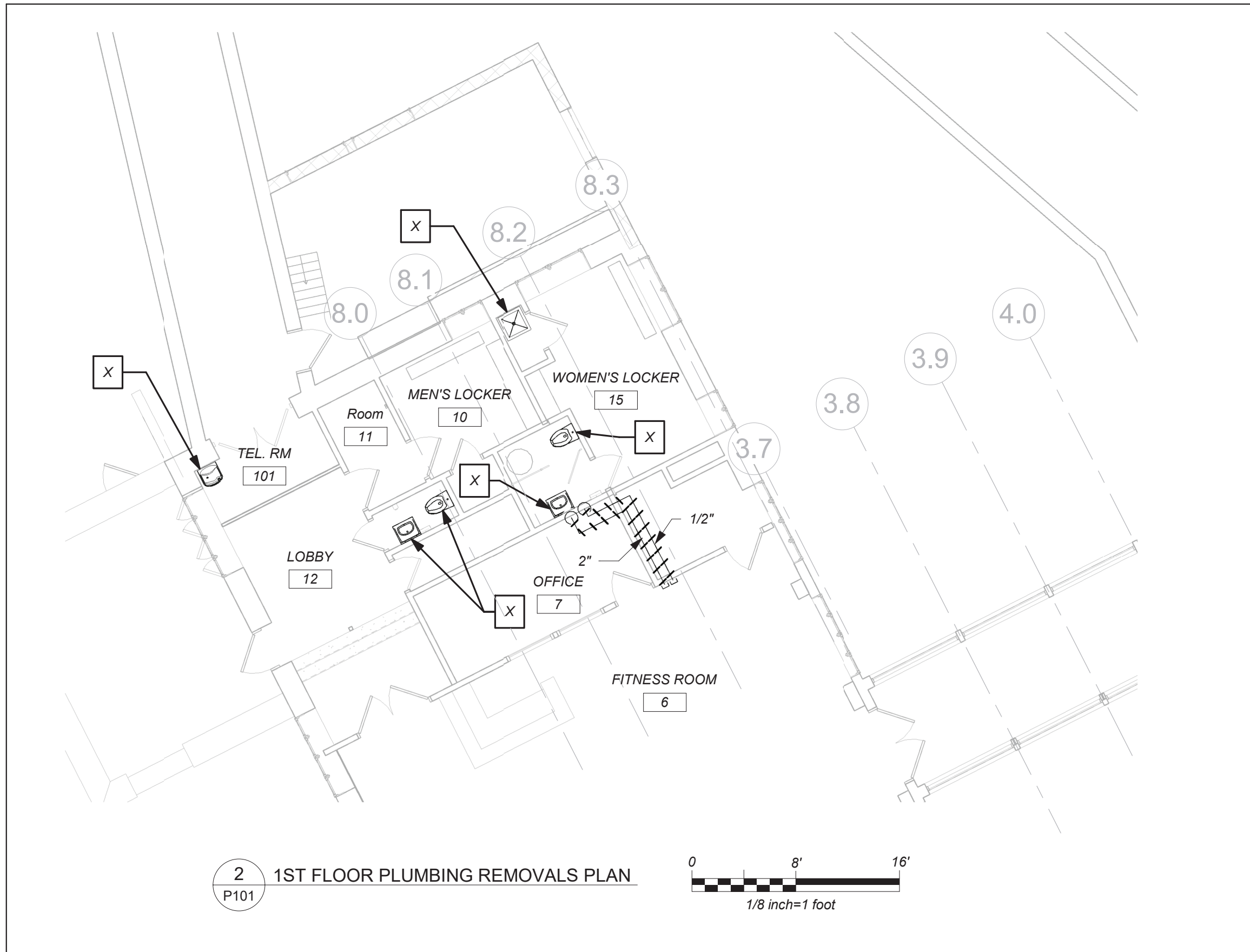


BEFORE FABRICATION THIS CONTRACTOR SHALL VERIFY ALL MEASUREMENTS AND CONDITIONS ON JOB AND COORDINATE HIS WORK WITH THE WORK OF ALL THE OTHER CONTRACTORS



LEGEND	
	NEW PIPING, FIXTURES, ETC.
	COLD WATER PIPING
	HOT WATER PIPING
	HOT WATER RETURN PIPING
	PLUMBING VENT PIPING
	SANITARY PIPING
	EXISTING SANITARY PIPING
	EXISTING PUMP DISCHARGE PIPING
	FLOW DIRECTION WITHIN PIPE
	CLEANOUT
	SHUT-OFF VALVE
	COMBINATION BALANCING & SHUT-OFF VALVE
	PIPE CONNS. (BOTTOM; TOP 45 OR 90; PIPE UP)
	PLUMBING FIXTURE IDENTIFICATION
	PLUMBING CONTRACTOR
	GENERAL CONTRACTOR
	HVAC CONTRACTOR
	VENT THRU ROOF
	FRESH AIR INTAKE
	FLOOR DRAIN
	PRESSURE REDUCING VALVE
	HOT WATER HEATER IDENTIFICATION
	POINT OF CONNECTION
	PART PLAN, DETAIL, SECTION NUMBER
	SECTION IDENTIFICATION

PLUMBING FIXTURE SCHEDULE					
MARK	DESCRIPTION	BRANCH SIZE			
		W	V	H	C
A1	FLOOR MOUNTED WATER CLOSET (FLUSH VALVE) (HANDICAPPED)	4"	2"	-	1"
B1	SINGLE WALL MOUNTED LAVATORY (HANDICAPPED)	1-1/2"	1-1/2"	1/2"	1/2"
B2	SINGLE COUNTER MOUNTED LAVATORY	1-1/2"	1-1/2"	1/2"	1/2"
C	MOP RECEPTOR	3"	3"	3/4"	3/4"
X	EXISTING FIXTURE TO BE REMOVED	-	-	-	-

- REMOVAL NOTES:**
- THE SCOPE OF REMOVAL SHOWN IS DIAGRAMMATIC ONLY AND INDICATES THE INTENT OF THE WORK TO BE PERFORMED AND NOT THE COMPLETE SCOPE OF DEMOLITION AND/OR REMOVAL WORK. IT SHALL BE THE RESPONSIBILITY OF THIS CONTRACTOR TO REMOVE ANY RELATED MECHANICAL DEVICES EVEN IF NOT SPECIFICALLY INDICATED TO BE REMOVED IN ORDER TO ACCOMMODATE NEW WORK.
  - REMOVE ALL PLUMBING EQUIPMENT, SPECIALTIES, DRAINS, CONTROLS, HANGERS, BASES, SUPPORTS, PIPING, VALVES, TUBING AND PLUMBING ACCESSORIES THAT ARE NOT INCORPORATED IN THE NEW LAYOUT.
  - WHERE REMOVAL IS INDICATED OR IMPLIED OR NOT INCORPORATED IN THE NEW LAYOUT, THE ITEM ITSELF IS TO BE REMOVED COMPLETELY TOGETHER WITH ALL CONNECTING PIPING, SPECIALTIES, SUPPORTS, CONTROLS, ETC. CONNECTING PIPING IS TO BE REMOVED BACK TO MAINS WHERE THE ARE TO BE CAPPED OR DISCONNECTED. THIS INCLUDES ALL GAS, SANITARY, VENT, WATER, AND PUMP DISCHARGE PIPING. REFER TO DIVISION 1 OF SPECIFICATION FOR CUTTING AND PATCHING REQUIREMENTS.
  - WHERE EXISTING PIPING ENTERS INACCESSIBLE TRENCHES, TUNNELS, SHAFTS, WALLS AND CEILINGS INSIDE THE EXISTING BUILDING, IT SHALL BE CUT BACK AT LEAST 2" INTO SUCH INACCESSIBLE SPACES AND SHALL BE SUITABLY CAPPED AND SEALED BY THE CONTRACTOR.
  - THE CONTRACTOR SHALL EXERCISE NORMAL CAUTION TO PREVENT UNNECESSARY CUTTING AND DAMAGE TO THE EXISTING BUILDING. ANY EXCESSIVE DAMAGE AS DETERMINED BY THE OWNER SHALL BE REPAIRED AND PAID FOR BY THE CONTRACTOR CAUSING THE DAMAGE.
  - ALL DEMOLISHED EQUIPMENT ETC. EXCEPT THOSE ITEMS SPECIFICALLY REQUESTED BY THE OWNER SHALL BECOME THE CONTRACTORS PROPERTY, SHALL BE REMOVED FROM THE PREMISES, AND DISPOSED OF LEGALLY.

# PROFESSIONAL DEVELOPMENT CENTER

NYACK UFSD

13A DICKINSON AVE  
NYACK, NY 10960



listen  
imagine  
build

**KG+D . ARCHITECTS PC**  
285 MAIN STREET MOUNT KISCO . NEW YORK . 10549  
P: 914.666.5900 KGDARCHITECTS.COM



BARILE GALLAGHER & ASSOCIATES

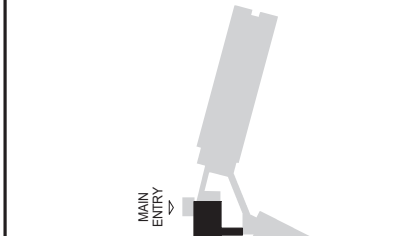
CONSULTING ENGINEERS

39 MARBLE AVE. PLEASANTVILLE, NY 10570  
PHONE: 914.328.6040 FAX: 914.328.9504 General@BGA-Eng.com

NY SED PROJECT CONTROL NO.

66-23-00-01-0-008-011

## CONSTRUCTION DOCUMENTS



AREA OF WORK  
NO WORK

**KEY PLAN**

NOTE: ALL IDEAS, DESIGNS, ARRANGEMENTS AND PLANS INDICATED OR REPRESENTED BY THIS DRAWING ARE OWNED BY AND ARE THE PROPERTY OF KAEYER, GARMENT, & DAVIDSON ARCHITECTS, PC (KGAD), AND WERE CREATED FOR USE ON THIS PROJECT. NONE OF SUCH IDEAS, DESIGNS, ARRANGEMENTS OR PLANS SHALL BE USED BY OR DISCLOSED TO ANY PURPOSE WHATSOEVER WITHOUT THE WRITTEN PERMISSION OF KGAD.

WRITTEN DIMENSIONS ON THIS DRAWING SHALL HAVE PRECEDENCE OVER SCALED DIMENSIONS. CONTRACTOR SHALL VERIFY ALL ACTUAL DIMENSIONS AND CONDITIONS ON THE JOB AND THE ARCHITECT MUST BE NOTIFIED OF ANY VARIATIONS FROM DIMENSIONS AND CONDITIONS SHOWN. SHOP DETAILS MUST BE SUBMITTED TO THIS OFFICE FOR APPROVAL, BEFORE PROCEEDING WITH FABRICATION.

ALTERATIONS BY ANY PERSON, IN ANY WAY, OF ANY ITEM CONTAINED ON THIS DOCUMENT, UNLESS ACTING UNDER THE DIRECTION OF THE LICENCED ARCHITECT WHOSE PROFESSIONAL SEAL IS AFFIXED HERETO, IS A VIOLATION OF TITLE VII, SECT. (b) 5 (b) OF NEW YORK STATE LAW. COPYRIGHT KAEYER, GARMENT & DAVIDSON ARCHITECTS & ENGINEERS, PC. ALL RIGHTS RESERVED.

Professional Seal

2	2022-07-12	ISSUE FOR BID
1	2022-03-24	CONSTRUCTION DOCUMENTS
No.	Date	Issue

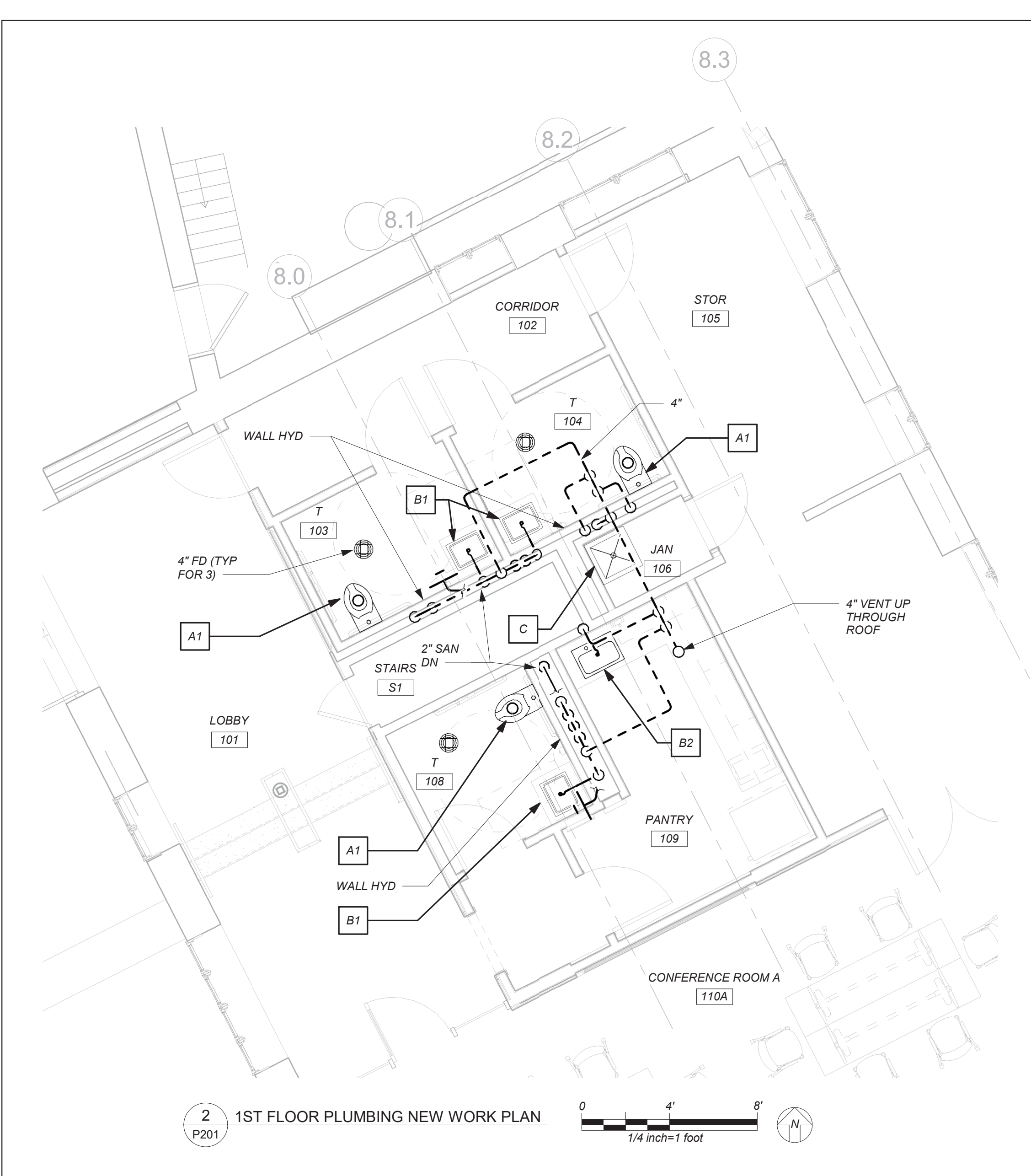
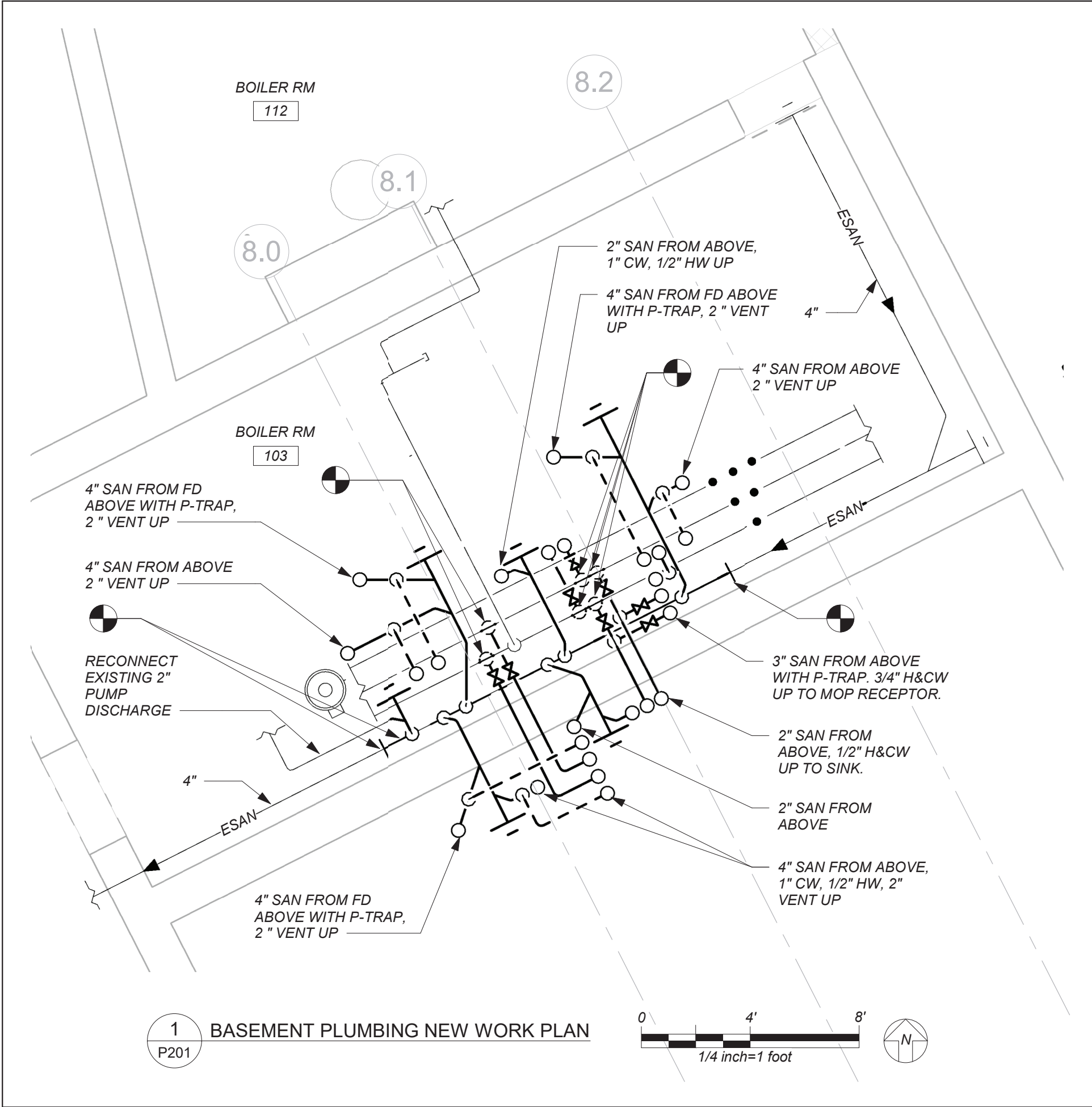
## LEGEND, SCHEDULE, NOTES, & PART BASEMENT & 1ST FLOOR PLANS (REMOVALS)

Job No.	Date
2021-1048	09/10/2021
Scale	Drawn / Checked
AS NOTED	BGA / BGA

Sheet Number

P101





BEFORE FABRICATION THIS CONTRACTOR SHALL  
VERIFY ALL MEASUREMENTS AND CONDITIONS ON  
JOB AND COORDINATE HIS WORK WITH THE  
WORK OF ALL THE OTHER CONTRACTORS

PROFESSIONAL  
DEVELOPMENT  
CENTER

NYACK UFSD

13A DICKINSON AVE  
NYACK,NY 10960

**KG+D**

listen  
imagine  
build

**KG+D . ARCHITECTS PC**  
285 MAIN STREET MOUNT KISCO . NEW YORK . 10549  
P:914.666.5900 KGDARCHITECTS.COM

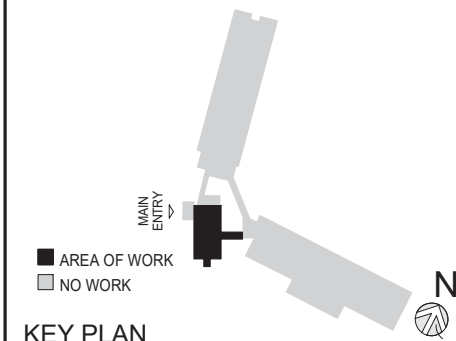
**bga**

BARILE GALLAGHER & ASSOCIATES  
CONSULTING ENGINEERS  
39 MARBLE AVE. PLEASANTVILLE, NY 10570  
PHONE: 914.328.6940 FAX: 914.328.9304 General@BGA-Eng.com

NY SED PROJECT CONTROL NO.

66-23-00-01-0-008-011

CONSTRUCTION  
DOCUMENTS



KEY PLAN

NOTE: ALL IDEAS, DESIGNS, ARRANGEMENTS AND PLANS INDICATED OR REPRESENTED BY THIS DRAWING ARE OWNED BY AND ARE THE PROPERTY OF KAEYER, GARMENT, & DAVIDSON ARCHITECTS, PC (KG&D), AND WERE CREATED FOR USE ON THIS PROJECT. NONE OF SUCH IDEAS, DESIGNS, ARRANGEMENTS OR PLANS SHALL BE USED BY OR DISCLOSED TO ANY PURPOSE WHATSOEVER WITHOUT THE WRITTEN PERMISSION OF (KG&D).

WRITTEN DIMENSIONS ON THIS DRAWING SHALL HAVE PRECEDENCE OVER SCALED DIMENSIONS. CONTRACTOR SHALL VERIFY ALL ACTUAL DIMENSIONS AND CONDITIONS ON THE JOB AND THE ARCHITECT MUST BE NOTIFIED OF ANY VARIATIONS FROM DIMENSIONS AND CONDITIONS SHOWN. SHOP DETAILS MUST BE SUBMITTED TO THIS OFFICE FOR APPROVAL, BEFORE PROCEEDING WITH FABRICATION.

ALTERATIONS BY ANY PERSON, IN ANY WAY, OF ANY ITEM CONTAINED ON THIS DOCUMENT, UNLESS ACTING UNDER THE DIRECTION OF THE LICENCED ARCHITECT WHOSE PROFESSIONAL SEAL IS AFFIXED HERETO, IS A VIOLATION OF TITLE VII, SECT. (b) 5 (b) OF NEW YORK STATE LAW.  
COPYRIGHT KAEYER, GARMENT + DAVIDSON ARCHITECTS & ENGINEERS, PC  
ALL RIGHTS RESERVED.

Professional Seal

2	2022-07-12	ISSUE FOR BID
1	2022-03-24	CONSTRUCTION DOCUMENTS
No.	Date	Issue

**PART BASEMENT  
& 1ST FLOOR  
PLANS  
(NEW WORK)**

Job No.	2021-1048	Date	09/10/2021
Scale	AS NOTED	Drawn / Checked	BGA / BGA

Sheet Number

**P201**