

Principals:

Mark D. Fellenzer, P.E., LEED AP  
John D. Fellenzer, P.E., MBA, LEED Green Associate

Founder:

Archie D. Fellenzer, Jr., P.E.  
(1924 - 2014)

## PRE-BID ADDENDUM NO. # 1

The information contained herein, revises, supplements, and/or supersedes the specific parts of the documents referred to and shall be attached to and become part of such documents as if originally forming a part thereof. Except as herein modified, all other provisions of the documents shall remain in full force as originally set forth.

**ISSUED TO:** ALL BIDDERS

**PROJECT:** Orange County Community College  
Physical Education Center HVAC Roof Top Unit #7-12 Replacement  
OCCC Project No. ITB-OCCC-2023-19  
F.E. Project No. 22-059

**DATE:** October 26, 2022

**ISSUED BY:** Eric D. Fellenzer, P.E.

**PAGES:** 2

**ATTACHMENT:**

1. Sketches SKHE-100.1, SKHED-104.1, SKHED-104.2, SKHE-102.1, SKHE-103.1, SKHE-104.1, SKHE-104.2, SKHE-104.3, SKHE-701.1, SKHE-701.2 and SKHE-702.1.

---

**RFI Items:** NONE

**Additional Amendment to Drawings and Specifications:**

1. See attached sketches SKHE-100.1, SKHED-104.1, SKHED-104.2, SKHE-102.1, SKHE-103.1, SKHE-104.1, SKHE-104.2, SKHE-104.3, SKHE-701.1, SKHE-701.2 and SKHE-702.1.
2. RT-7, 8 and 9 have been removed from the project's scope of work. The revisions are shown on sketches SKHE-100.1, SKHED-104.1, SKHED-104.2, SKHE-104.1 and SKHE-104.2.
3. Installation of new conduit and wire feeding RT-7 was removed. See sketches SKHE-102.1 and SKHE-103.1.
4. Details on drawings HE-701 have been revised to reflect the omission of RT-7, 8 and 9 from project scope. See sketches SKHE-701.1 and SKHE-701.2

**PRE-BID ADDENDUM #1 – OCCC – Physical Education Center HVAC RTU Replacement (ITB-OCCC-2023-19)**

---

5. Roof Top Unit Schedule and PP-HVAC panel schedule on sketch SKHE-702.1 have both been revised to reflect the omission of RT-7, 8 and 9 from project scope.

Please sign and date this addendum E-mail back to [jdd@felp.com](mailto:jdd@felp.com) and CC [edf@felp.com](mailto:edf@felp.com) and [bg@felp.com](mailto:bg@felp.com) and include it with the bid submission.

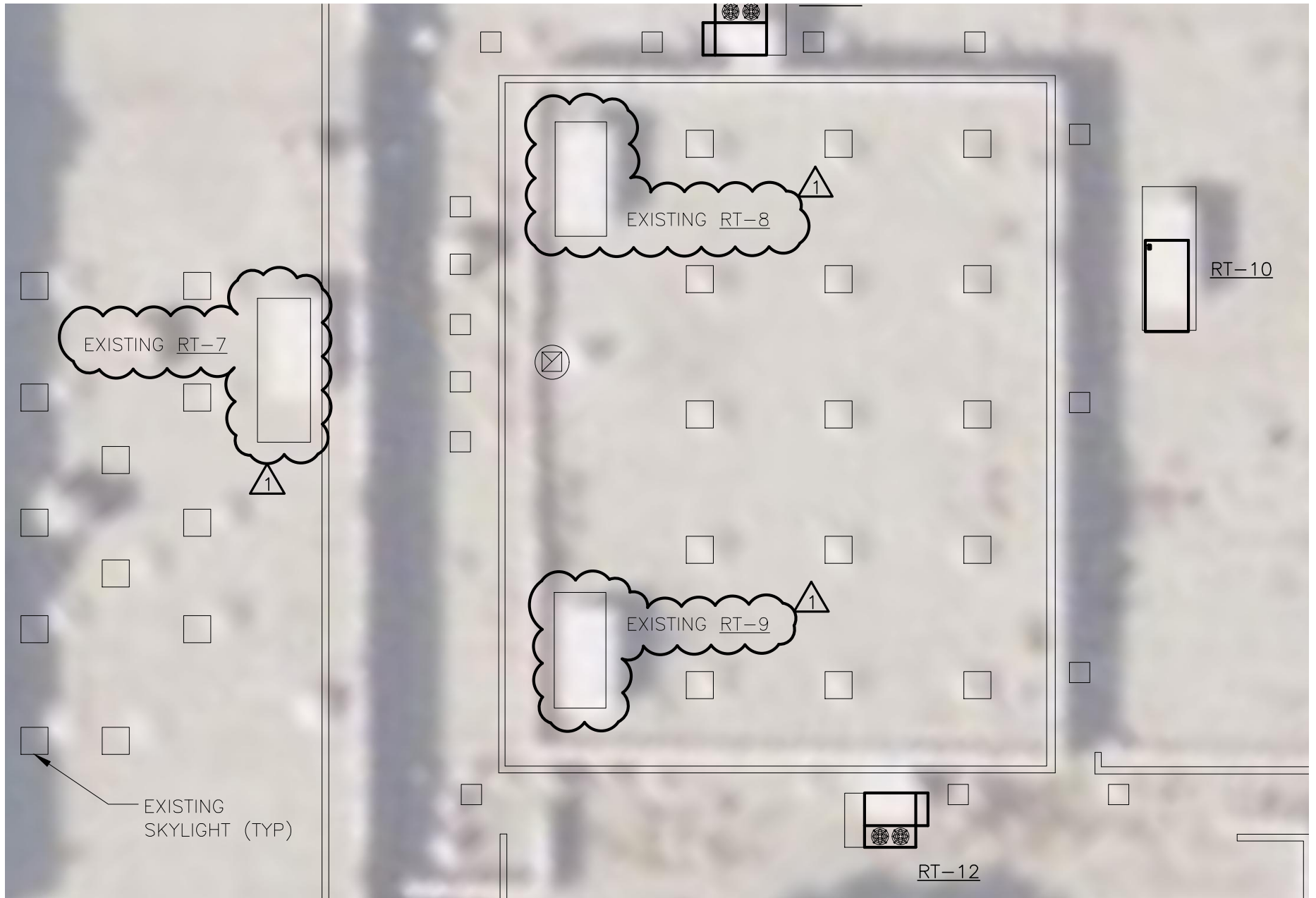
Company Name: Joe Lombardo Plumbing & Heating of Rockland Inc

Address: 321 Spook Rock Road Suite 109A Suffern, New York 10901

Company Officer: Ronald J. Lombardo

Date: October 28, 2022

-----**END OF ADDENDUM**-----



**FELLENZER III**  
ENGINEERING LLP

www.fellp.com

22 Mulberry St., Suite 2A,  
Middletown, NY 10940  
t 845-343-1481 fx 855-320-8735

181 Church St., Suite 100,  
Poughkeepsie, NY 12601  
t 845-454-9704; fx 855-320-8735

PROJECT TITLE: **OCCE PE ROOFTOP  
UNIT REPLACEMENT**  
COUNTY JOB NO.: OCCE-2023-19

FE PROJECT No:  
22-059

SCALE:  
1"=20'-0"

DESIGNED BY:  
JDD

DRAWN BY:  
SRB

CHECKED BY:  
EDF

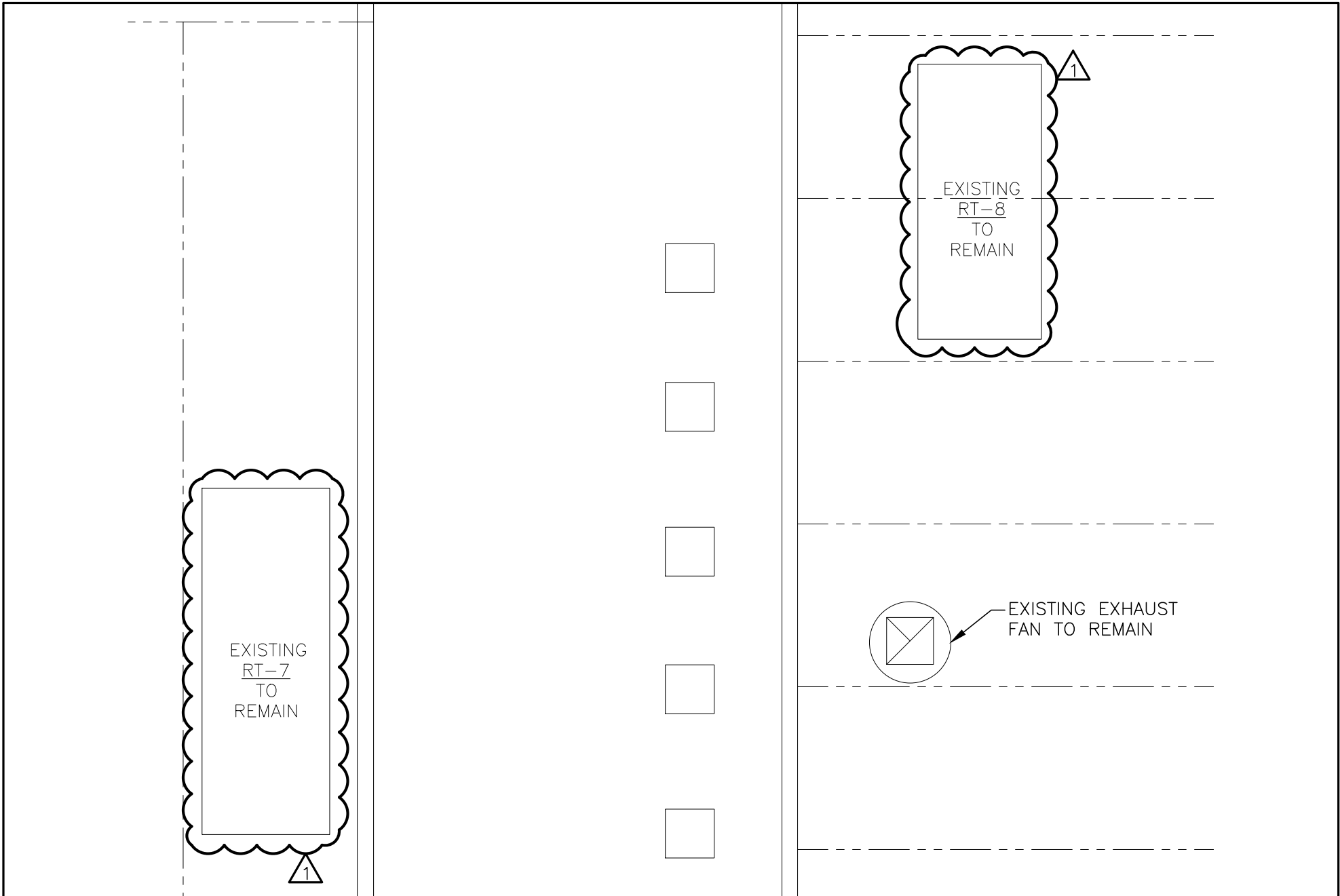
REF. DWG.:  
**HE-100**

SKETCH TITLE:  
**GENERAL REVISION #1**

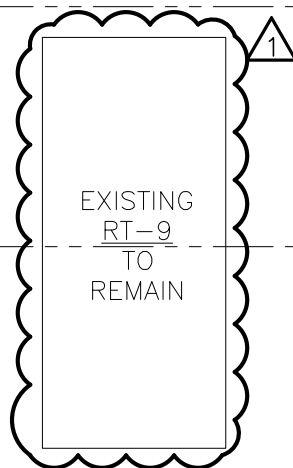
REF. DWG. TITLE:  
**PARTIAL SITE PLAN**

SKETCH No:  
**SKHE-100.1**


ISSUE DATE:  
10/26/22



|   |  |                  |                              |  |                                  |
|---|--|------------------|------------------------------|--|----------------------------------|
| <b>FELLENZER III</b><br>ENGINEERING LLP<br>www.fellp.com<br>22 Mulberry St., Suite 2A,<br>Middletown, NY 10940<br>t 845-343-1481 fx 855-320-8735<br>181 Church St., Suite 100,<br>Poughkeepsie, NY 12601<br>t 845-454-9704; fx 855-320-8735 | PROJECT TITLE: <b>OCCC PE ROOFTOP<br/>UNIT REPLACEMENT</b><br>COUNTY JOB NO.: OCCC-2023-19 |                  |                              | SKETCH TITLE:<br><b>GENERAL REVISION #1</b>                            | SKETCH No:<br><b>SKHED-104.1</b> |
|   | FE PROJECT No:<br>22-059   | SCALE:<br>N.T.S. | REF. DWG.:<br><b>HED-104</b> | REF. DWG. TITLE:<br><b>MECH/ELEC. DEMOLITION<br/>PARTIAL ROOF PLAN</b> | ISSUE DATE:<br>10/26/22          |
|   | DESIGNED BY:<br>JDD  | DRAWN BY:<br>SRB | CHECKED BY:<br>EDF           |  |                                  |



### **MECHANICAL DEMOLITION NOTES:**

1. ALL LOCATIONS SHOWN ARE APPROXIMATE. IT IS THE RESPONSIBILITY OF THE HVAC CONTRACTOR TO VERIFY LOCATIONS OF UNITS, PIPING, AND DUCTWORK PRIOR TO ANY DEMOLITION WORK.
2. REMOVE ALL EQUIPMENT AS INDICATED ON PLAN. REMOVALS SHALL INCLUDE ALL SUPPORTS, DAMPERS, VALVES, FITTINGS, CONTROLS AND ALL ASSOCIATED LOW VOLTAGE WIRING, AND ANY OTHER ASSOCIATED ACCESSORIES WHICH PERTAIN TO THE EQUIPMENT TO BE REMOVED.
3. REMOVAL OF ALL POWER CONNECTIONS TO DEMOLITION ITEMS SHALL BE BY THE HVAC CONTRACTOR.
4. ANY DISCREPANCIES BETWEEN DEMOLITION PLANS AND ACTUAL FIELD CONDITIONS SHALL BE BROUGHT TO THE ATTENTION OF THE ENGINEER. ANY DEMOLITION WORK WHICH MAY BE QUESTIONABLE DUE TO UNFORESEEN FIELD CONDITIONS SHALL NOT BE REMOVED UNTIL REVIEWED BY THE ENGINEER OR BUILDING FACILITIES MANAGER.
5. DEMOLITION WORK SHALL INCLUDE THE PREPARATION OF EXISTING EQUIPMENT FOR CONNECTION TO NEW EQUIPMENT. COORDINATE DEMOLITION WORK WITH THE CONSTRUCTION PLANS.
6. ALL EQUIPMENT REMOVALS SHALL BECOME THE PROPERTY OF THIS CONTRACTOR. THIS CONTRACTOR SHALL BE RESPONSIBLE FOR THE PROPER REMOVAL AND DISPOSAL OF DEMOLITION ITEMS OFF-SITE, UNLESS OTHERWISE NOTED.
7. ALL CUTTING AND PATCHING NECESSARY FOR DEMOLITION WORK SHALL BE THE RESPONSIBILITY OF THE HVAC CONTRACTOR.
8. THE SCOPE OF THIS PROJECT INCLUDES THE REPLACEMENT OF  RT-10 THROUGH RT-12.
9. THE PLANS ARE INTENDED TO CONVEY THE EXTENT AND SCOPE OF THE DEMOLITION WORK. EVERY ITEM INTENDED FOR REMOVAL MAY NOT BE SHOWN. THE CONTRACTOR IS ADVISED TO ATTEND THE OWNER'S SPECIFIED WALK-THROUGH OF THE PROJECT SITE BEFORE SUBMITTING A BID FOR DEMOLITION WORK.
10. IT IS THE RESPONSIBILITY OF THE HVAC CONTRACTOR FOR THE DRAINING, FILLING & CHEMICAL WATER TREATMENT PER BOILER MANUFACTURER'S REQUIREMENTS.

**FELLENZER III**  
ENGINEERING LLP

www.fellp.com

22 Mulberry St., Suite 2A,  
Middletown, NY 10940  
t 845-343-1481 fx 855-320-8735

181 Church St., Suite 100,  
Poughkeepsie, NY 12601  
t 845-454-9704; fx 855-320-8735

PROJECT TITLE: **OCCC PE ROOFTOP  
UNIT REPLACEMENT**  
COUNTY JOB NO.: OCCC-2023-19

FE PROJECT No:  
22-059

SCALE:  
N.T.S.

DESIGNED BY:  
JDD

DRAWN BY:  
SRB

CHECKED BY:  
EDF

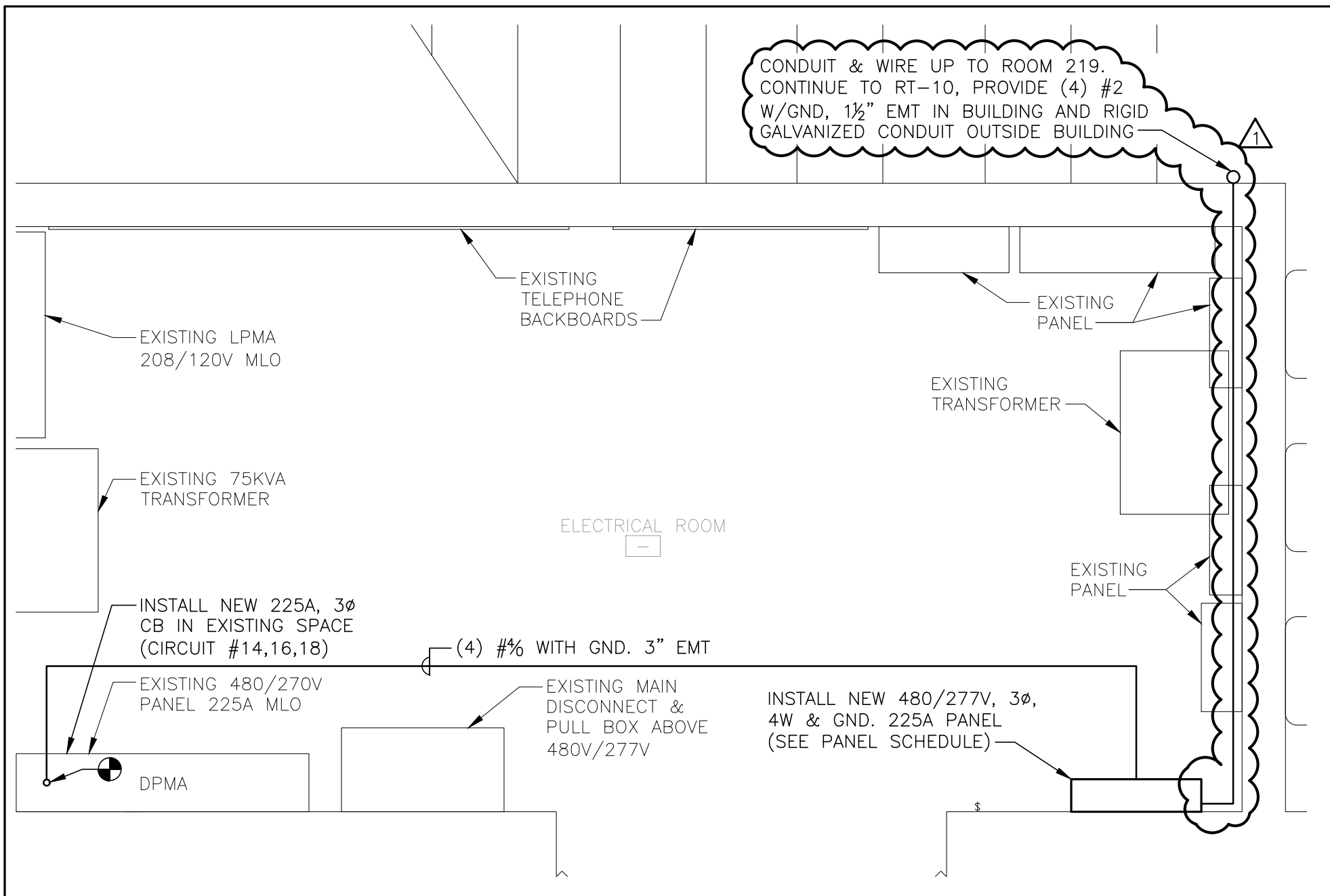
REF. DWG.:  
**HED-104**

SKETCH TITLE:  
**GENERAL REVISION #1**

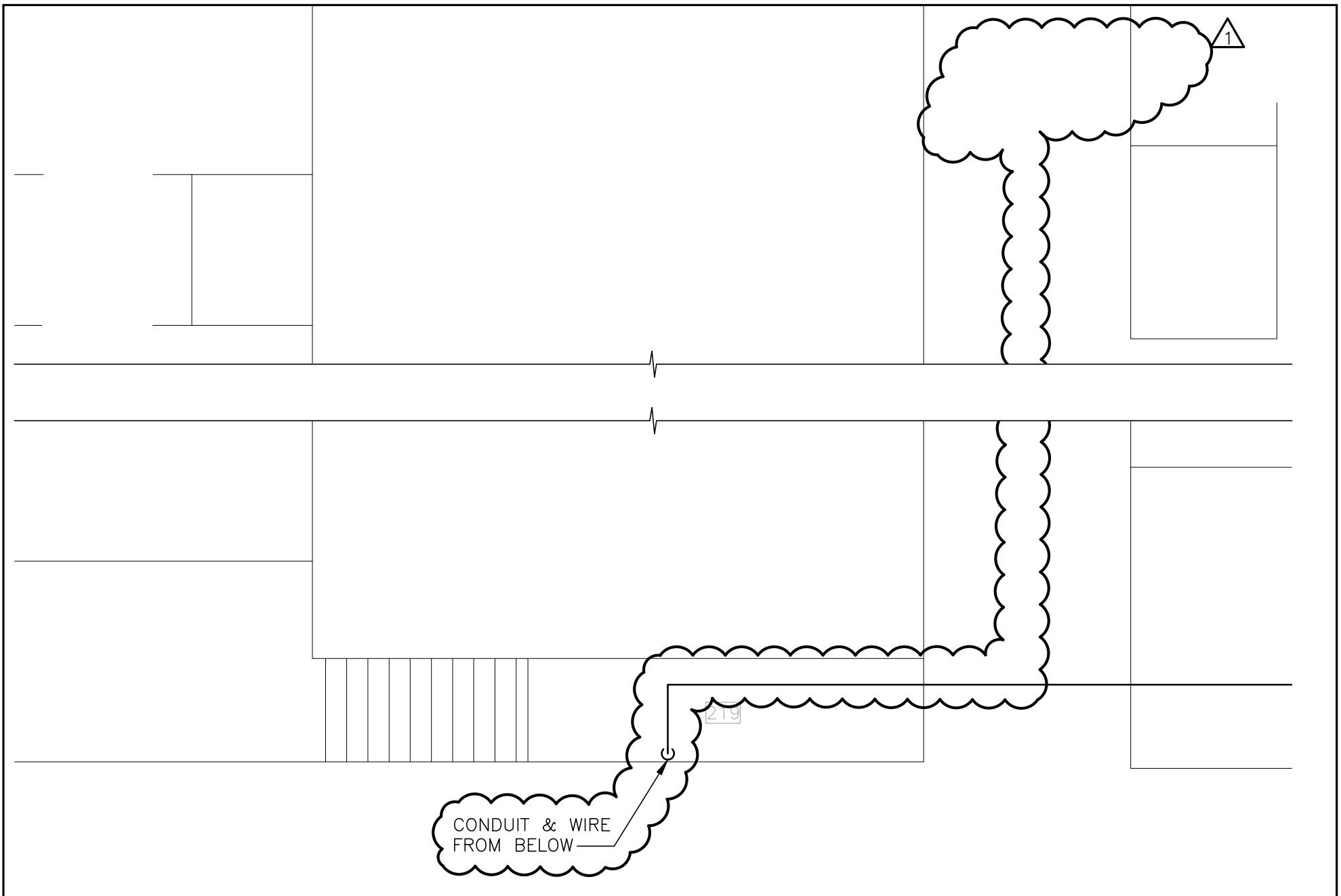
REF. DWG. TITLE:  
**MECH/ELEC. DEMOLITION  
PARTIAL ROOF PLAN**

SKETCH No:  
**SKHED-104.2**

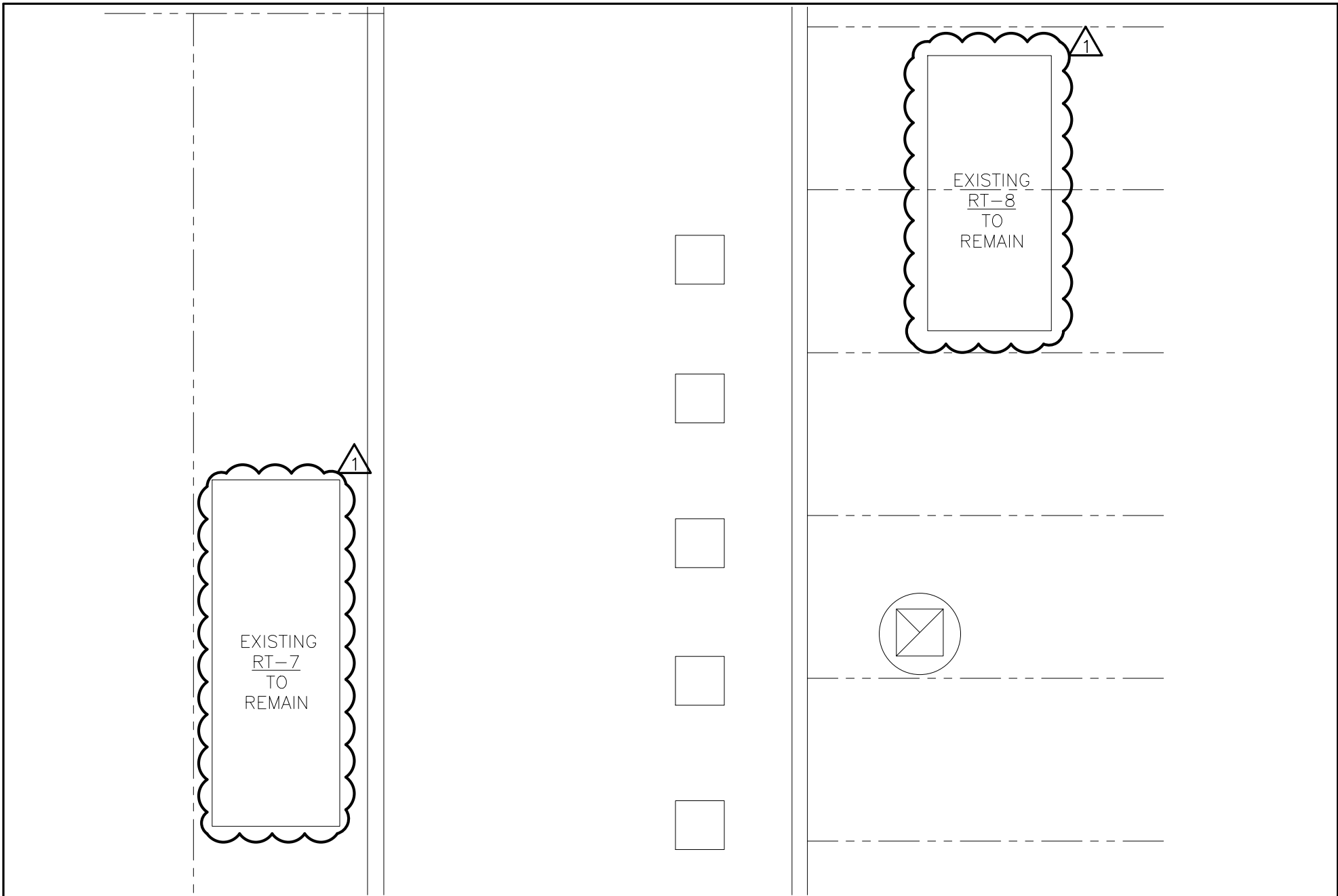
ISSUE DATE:  
10/26/22



|  |  |   |  |  |   |  |  |
|--|--|---|--|--|---|--|--|
| <div><div>FELLENZER III</div><div>ENGINEERING LLP</div><div>www.fellp.com</div></div> <div>22 Mulberry St., Suite 2A,<br/>Middletown, NY 10940<br/>t 845-343-1481 fx 855-320-8735</div> <div>181 Church St., Suite 100,<br/>Poughkeepsie, NY 12601<br/>t 845-454-9704; fx 855-320-8735</div> |  | <div>PROJECT TITLE: OCCC PE ROOFTOP<br/>UNIT REPLACEMENT</div> <div>COUNTY JOB NO.: OCCC-2023-19</div> <div><div>FE PROJECT No:<br/>22-059</div><div>SCALE:<br/>1/8"=1'-0"</div><div>REF. DWG.:<br/>HE-102</div></div> <div><div>DESIGNED BY:<br/>JDD</div><div>DRAWN BY:<br/>SRB</div><div>CHECKED BY:<br/>EDF</div></div> |  |  | <div>SKETCH TITLE:<br/>GENERAL REVISION #1</div> <div>REF. DWG. TITLE:<br/>MECH/ELEC:<br/>ENLARGED FLOOR PLAN</div> |  | <div>SKETCH No:<br/>SKHE-102.1</div> <div>ISSUE DATE:<br/>10/26/22</div> |
|--|--|---|--|--|---|--|--|



|   |  |                  |                      |  |   |                          |
|---|--|------------------|----------------------|--|---|--------------------------|
| <div><div><div>FELLENZER</div><div>ENGINEERING LLP</div></div><div>www.fellp.com</div></div> <div>22 Mulberry St., Suite 2A,<br/>Middletown, NY 10940<br/>t 845-343-1481 fx 855-320-8735</div> <div>181 Church St., Suite 100,<br/>Poughkeepsie, NY 12601<br/>t 845-454-9704; fx 855-320-8735</div> | PROJECT TITLE: <div>OCCC PE ROOFTOP<br/>UNIT REPLACEMENT</div> <div>COUNTY JOB NO.: OCCC-2023-19</div> |                  |                      | SKETCH TITLE: <div>GENERAL REVISION #1</div> |   | SKETCH No:<br>SKHE-103.1 |
|   | FE PROJECT No:<br>22-059   |                  | SCALE:<br>1/8"=1'-0" | REF. DWG.:<br>HE-103                         | REF. DWG. TITLE:<br>MECH/ELEC.<br>PARTIAL SECOND FLOOR PLAN | ISSUE DATE:<br>10/26/22  |
|   | DESIGNED BY:<br>JDD  | DRAWN BY:<br>SRB | CHECKED BY:<br>EDF   |  |   |                          |



**FELLENZER III**  
ENGINEERING LLP

www.fellp.com

22 Mulberry St., Suite 2A,  
Middletown, NY 10940  
t 845-343-1481 fx 855-320-8735

181 Church St., Suite 100,  
Poughkeepsie, NY 12601  
t 845-454-9704; fx 855-320-8735

PROJECT TITLE: **OCCC PE ROOFTOP  
UNIT REPLACEMENT**  
COUNTY JOB NO.: OCCC-2023-19

FE PROJECT No:  
22-059

SCALE:  
1/8"=1'-0"

DESIGNED BY:  
JDD

DRAWN BY:  
SRB

CHECKED BY:  
EDF

REF. DWG.:  
**HE-104**

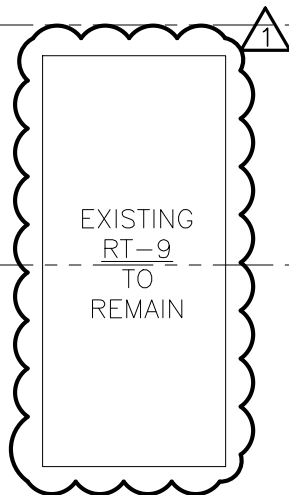
SKETCH TITLE:  
**GENERAL REVISION #1**

REF. DWG. TITLE:  
**MECH/ELECT. NEW  
PARTIAL ROOF PLAN**

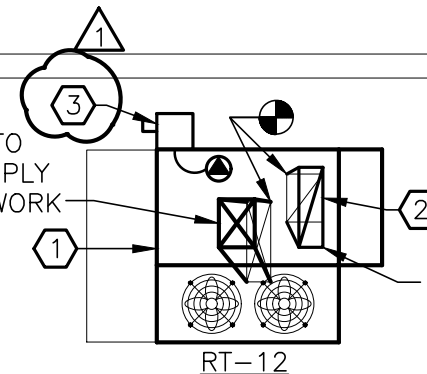
SKETCH No:  
**SKHE-104.1**

ISSUE DATE:  
10/26/22





INSTALL NEW TRANSITION TO  
CONNECT NEW 34x30 SUPPLY  
TO EXISTING 40x12 DUCTWORK



INSTALL NEW TRANSITION  
CONNECT NEW 48x13  
TO EXISTING 24x18 D

**FELLENZER III**  
ENGINEERING LLP

www.fellp.com

22 Mulberry St., Suite 2A,  
Middletown, NY 10940  
t 845-343-1481 fx 855-320-8735

181 Church St., Suite 100,  
Poughkeepsie, NY 12601  
t 845-454-9704; fx 855-320-8735

PROJECT TITLE: **OCCC PE ROOFTOP  
UNIT REPLACEMENT**  
COUNTY JOB NO.: OCCC-2023-19

FE PROJECT No:  
22-059

SCALE:  
1/8"=1'-0"

DESIGNED BY:  
JDD

DRAWN BY:  
SRB

CHECKED BY:  
EDF

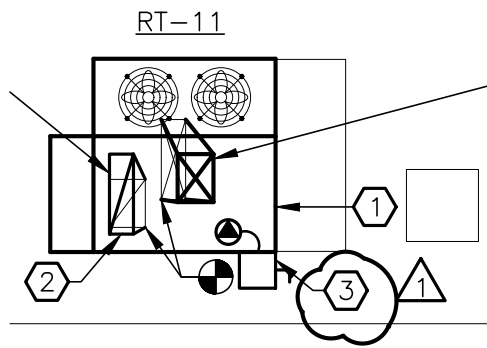
REF. DWG.:  
**HE-104**

SKETCH TITLE:  
**GENERAL REVISION #1**

REF. DWG. TITLE:  
**MECH/ELECT. NEW  
PARTIAL ROOF PLAN**

SKETCH No:  
**SKHE-104.2**

ISSUE DATE:  
**10/26/22**



### KEYED NOTES:

① INSTALL NEW ROOFTOP UNIT ON EXISTING ROOF CURB USING CUSTOM INSULATED TRANSITION CURBING. MAKE ALL NECESSARY CONNECTIONS TO GLYCOL SUPPLY AND RETURN PIPING. RELOCATE ALL PIPING AS NECESSARY. CONTRACTOR TO SUBMIT SHOP DRAWINGS OF TRANSITION CURBING TO ENGINEER FOR APPROVAL.

② DUCT SMOKE DETECTORS SHALL BE FURNISHED AND INSTALLED BY THE COLLEGE'S FIRE ALARM CONTRACTOR. DUCT SMOKE DETECTORS SHALL BE INSTALLED IN COMMON SECTION OF SUPPLY AND RETURN AIR DUCT DIRECTLY BELOW ROOFTOP UNIT AND CONNECTED TO THE EXISTING FIRE ALARM SYSTEM. CONNECT ROOFTOP UNIT TO EXISTING FIRE ALARM SYSTEM FOR FAN SHUTDOWN.

③ DISCONNECT EXISTING POWER FEEDER. EXTEND WIRE AND CONDUIT FROM EXISTING DISCONNECTION POINT TO NEW NON-FUSED DISCONNECT SWITCH. PROVIDE WIRE AND CONDUIT FOR CONNECTION FROM DISCONNECT SWITCH TO NEW RTU'S.

### INSTALLATION NOTES:

1. ALL LOCATIONS SHOWN ARE APPROXIMATE. VERIFY LOCATIONS OF ROOFTOP UNITS, PIPING, AND DUCTWORK IN FIELD.
2. INSTALL NEW ROOFTOP UNITS AT LOCATIONS SHOWN ON PLANS. RECONNECT TO EXISTING PIPING AND DUCTWORK.
3. CONNECT NEW ROOFTOP UNITS TO EXISTING ELECTRICAL WIRING. EXTEND CABLE AND USE JUNCTION BOXES AS NECESSARY TO MAKE THE CONNECTION.
4. ALL UNITS SHALL BE SUPPLIED WITH A FACTORY INSTALLED DISCONNECT SWITCH, CONVENIENCE RECEPTACLE AND LIGHT.
5. REPORT ANY DEFECTS IN EXISTING DUCTWORK, POWER WIRING, AND HYDRONIC PIPING TO SUNY ORANGE REPRESENTATIVES.
6. EXISTING CURBING MAY BE REUSED IF NEW UNIT FITS THE EXISTING CURB. CONTRACTOR TO PROVIDE SHOP DRAWINGS TO ENGINEER FOR APPROVAL.
7. THE SCOPE OF THIS PROJECT INCLUDES THE REPLACEMENT OF RT-10 THROUGH RT-12.

**FELLENZER III**  
ENGINEERING LLP

www.fellp.com

22 Mulberry St., Suite 2A,  
Middletown, NY 10940  
t 845-343-1481 fx 855-320-8735

181 Church St., Suite 100,  
Poughkeepsie, NY 12601  
t 845-454-9704; fx 855-320-8735

PROJECT TITLE: **OSCC PE ROOFTOP  
UNIT REPLACEMENT**  
COUNTY JOB NO.: OSCC-2023-19

FE PROJECT No:  
22-059

SCALE:  
1/8"=1'-0"

DESIGNED BY:  
JDD

DRAWN BY:  
SRB

CHECKED BY:  
EDF

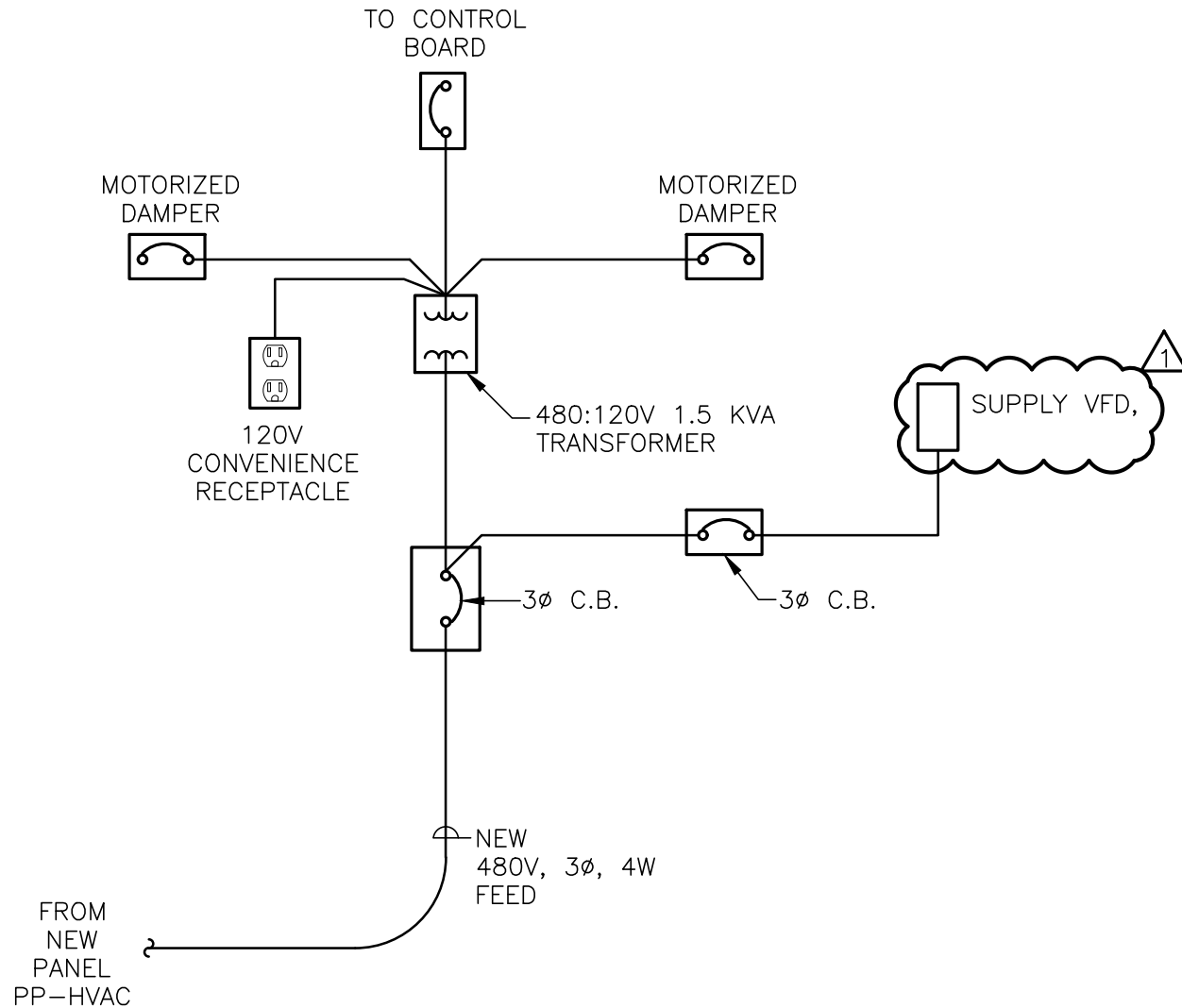
REF. DWG.:  
**HE-104**

SKETCH TITLE:  
**GENERAL REVISION #1**

REF. DWG. TITLE:  
**MECH/ELECT. NEW  
PARTIAL ROOF PLAN**

SKETCH No:  
**SKHE-104.3**

ISSUE DATE:  
10/26/22



## ROOFTOP UNIT ELECTRICAL CONNECTION DETAIL (TYPICAL) (FOR RT-10)

2

N.T.S.

**FELLENZER III**  
ENGINEERING LLP

www.fellp.com

22 Mulberry St., Suite 2A,  
Middletown, NY 10940  
t 845-343-1481 fx 855-320-8735

181 Church St., Suite 100,  
Poughkeepsie, NY 12601  
t 845-454-9704; fx 855-320-8735

PROJECT TITLE: **OSCC PE ROOFTOP  
UNIT REPLACEMENT**  
COUNTY JOB NO.: OSCC-2023-19

FE PROJECT No:  
22-059

SCALE:  
N.T.S.

DESIGNED BY:  
JDD

DRAWN BY:  
SRB

CHECKED BY:  
EDF

REF. DWG.:  
**HE-701**

SKETCH TITLE:  
**GENERAL REVISION #1**

REF. DWG. TITLE:  
**MECH/ELEC.  
DETAILS**

SKETCH No:  
**SKHE-701.1**

ISSUE DATE:  
**10/26/22**

## NOTES:

1. REPLACE EXISTING ROOF TOP UNITS (3 TOTAL) <sup>1</sup> AT LOCATIONS SHOWN ON PLANS
2. REPLACE ALL EXISTING ROOF CURBS FOR ALL (3) UNITS. MODIFY EXISTING ROOF ROOF MEMBRANE AND SUB-ROOFING IN ACCORDANCE WITH ROOFING MANUFACTURERS REQUIREMENTS AND IN COMPLIANCE WITH EXISTING WARRANTY. SUBMIT SHOP DRAWINGS.
3. LOCATIONS OF EXISTING DUCTWORK, PIPING AND ROOFTOP UNIT LOCATIONS ARE APPROXIMATE. VERIFY EXACT LOCATION IN FIELD.
4. REMOVE ALL EXISTING EQUIPMENT TO AN OFFSITE LOCATION AND DISPOSE OF IN A MANNER ACCEPTABLE TO LOCAL, COUNTY, STATE AND FEDERAL REGULATIONS.
5. ALL UNITS SHALL BE SUPPLIED WITH A FACTORY INSTALL DISCONNECT SWITCH, CONVENIENCE RECEPTACLE AND LIGHT.
6. DISCONNECTION AND RECONNECTION OF ENERGY MANAGEMENT SYSTEM FOR ALL ROOFTOP UNITS MUST BE CLOSELY COORDINATED WITH EUA-DAY CONTROLS AT (914-227-8120) CONTACT EUA-DAY 3 WORKING DAYS BEFORE REMOVAL OF EACH ROOFTOP UNIT. THIS SHOULD BE AT NO COST TO THE BIDDING HVAC CONTRACTOR.

|  |  |                  |                             |   |                                 |
|--|--|------------------|-----------------------------|---|---------------------------------|
| <b>FELLENZER III</b><br>ENGINEERING LLP<br>www.fellp.com<br><br>22 Mulberry St., Suite 2A,<br>Middletown, NY 10940<br>t 845-343-1481 fx 855-320-8735 | PROJECT TITLE: <b>OCCC PE ROOFTOP<br/>UNIT REPLACEMENT</b><br>COUNTY JOB NO.: OCCC-2023-19 |                  |                             | SKETCH TITLE:<br><b>GENERAL REVISION #1</b>       | SKETCH No:<br><b>SKHE-701.2</b> |
|  | FE PROJECT No:<br>22-059   | SCALE:<br>N.T.S. | REF. DWG.:<br><b>HE-701</b> | REF. DWG. TITLE:<br><b>MECH/ELEC.<br/>DETAILS</b> | ISSUE DATE:<br>10/26/22         |
|  | DESIGNED BY:<br>JDD  | DRAWN BY:<br>SRB | CHECKED BY:<br>EDF          |   |                                 |

# ROOFTOP UNIT SCHEDULE

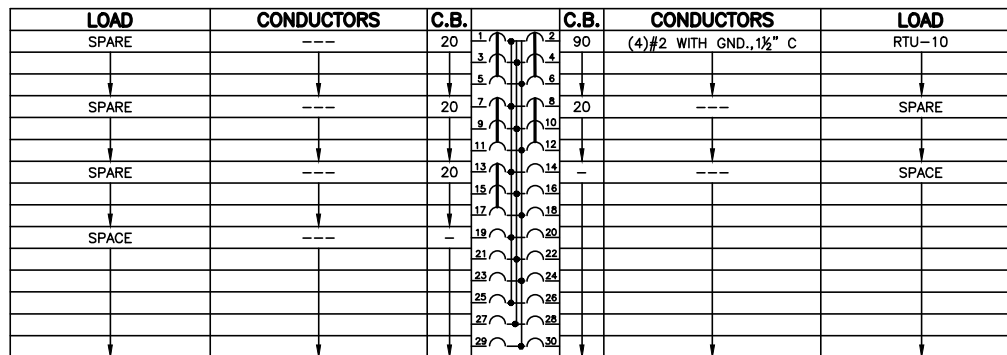
| UNIT<br>NUMBER | MANUFACTURER<br>(OR APPROVED EQUAL) | MODEL NUMBER | MAX. WEIGHT<br>(LBS) | AREA SERVED        | TYPE              | CFM    | E.S.P. | COOLING COIL DATA |             |       |      | HEATING COIL DATA (40% E.G. SOL.) |          |       |     | ACCESSORIES |
|----------------|-------------------------------------|--------------|----------------------|--------------------|-------------------|--------|--------|-------------------|-------------|-------|------|-----------------------------------|----------|-------|-----|-------------|
|                |                                     |              |                      |                    |                   | (S.A.) | (S.A.) | TOTAL (MBH)       | SENS. (MBH) | TYPE  | IEER | FLUID ENT/LVG                     |          | MBH   | GPM | FILTER      |
| RT-10          | DAIKIN                              | DPS020A      | 3786                 | HANDBALL COURTS    | HEATING & COOLING | 9,000  | 0.5    | 257.742           | 218.77      | 4 ROW | 20.4 | 180°F                             | 140.8 °F | 713.1 | 40  | 2" DISP.    |
| RT-11          | DAIKIN                              | DPS010A      | 2218                 | CLASSROOMS & NURSE | HEATING & COOLING | 3,200  | 0.5    | 120               | 86.7        | 2 ROW | 19.3 | 180°F                             | 142°F    | 187   | 11  | 2" DISP.    |
| RT-12          | DAIKIN                              | DPS010A      | 2218                 | ADMIN. AREA        | HEATING & COOLING | 3,200  | 0.5    | 120               | 86.7        | 2 ROW | 19.3 | 180°F                             | 142°F    | 187   | 11  | 2" DISP.    |

# ROOFTOP UNIT SCHEDULE (CONT'D)

| UNIT<br>NUMBER | ELECTRICAL CONNECTION |                          |            |            |              |   | SUPPLY FAN |    | RETURN FAN |       | COND. FAN MOTORS   | COMPRESSOR MTRS | REMARKS                           |
|----------------|-----------------------|--------------------------|------------|------------|--------------|---|------------|----|------------|-------|--------------------|-----------------|-----------------------------------|
|                | VOLTS/HZ/PHASE        | EXISTING FUSE DISCONNECT | FLA (AMPS) | MCA (AMPS) | MROPD (AMPS) |   | RA/LRA     | HP | RA/LRA     | HP    | RATED AMPS         | RATED AMPS      |                                   |
| RT-10          | 460/60/3              | 70 A                     | 57.2       | 64.7       | 90           | - | N/A        | 10 | N/A        | (2) 4 | (2) 2.6, 5.2 TOTAL | 30.1            | SEE NOTES 1, 2, 3, 4, 5, 6, 7 & 8 |
| RT-11          | 460/60/3              | 30 A                     | 20.5       | 22.5       | 30           | - | 4          | 4  | 2.3        | 2.3   | (2) 0.9, 1.8 TOTAL | 4.5/7.9         | SEE NOTES 1, 2, 3, 4, 5, 6, 7 & 8 |
| RT-12          | 460/60/3              | 30 A                     | 20.5       | 22.5       | 30           | - | 4          | 4  | 2.3        | 2.3   | (2) 0.9, 1.8 TOTAL | 4.5/7.9         | SEE NOTES 1, 2, 3, 4, 5, 6, 7 & 8 |

## NOTES:

- EXISTING CONDUIT AND CONDUCTORS MAY BE USED IF OF ADEQUATE SIZE AND IN GOOD CONDITION.
- UNIT TO BE CONNECTED TO THE EXISTING BMS. ALL CONNECTIONS TO EXISTING BY DAY AUTOMATION.
- PROVIDE UNIT WITH BACNET IP CARD.
- PROVIDE UNIT WITH THE FOLLOWING FACTORY INSTALLED SENSORS: LEAVING COIL/ENTERING FAN TEMPERATURE SENSOR, DUCT HIGH LIMIT SWITCH, BACNET/IP CARD, RETURN AIR TEMPERATURE SENSOR, DISCHARGE AIR TEMPERATURE SENSOR, OUTSIDE AIR TEMPERATUR SENSOR, RETURN AIR ENTHALPY SENSOR, OUTSIDE AIR ENTHALPY SENSOR, DIRTY FILTER ON/OFF SWITCH, SUPPLY FAN AIR PROVING VIA MODBUS, BUILDING STATIC PRESSURE SENSOR.
- PROVIDE UNIT WITH MOTORIZED DAMPERS AND VFD'S. CONTROL WIRING TO BE INSTALLED BY DAY AUTOMATION.
- PROVIDE UNIT WITH FACTORY INSTALLED NON-FUSED DISCONNECT SWITCH.
- PROVIDED UNIT WITH POWERED 115V GFI OUTLET.
- PROVIDE UNIT WITH ENTHALPY ECONOMIZER.



## POWER PANEL - (PP-HVAC)

TYPE: SQUARE D  
RATING: 277/480V, 3Ø 4W  
MAINS: MLO  
BRACING: 22 KAIC  
ENCLOSURE: NEMA 1 SURFACE MOUNT  
POLES: 30

## NOTES:

- ALL WIRE SHALL BE DUAL RATED THHN/THWN COPPER CONDUCTOR UNLESS OTHERWISE NOTED.
- ALL CIRCUITS SHALL HAVE FULL SIZE INSULATED GREEN GROUND UNLESS OTHERWISE NOTED.

**FELLENZER III**  
ENGINEERING LLP

www.fellp.com

22 Mulberry St., Suite 2A,  
Middletown, NY 10940  
t 845-343-1481 fx 855-320-8735

181 Church St., Suite 100,  
Poughkeepsie, NY 12601  
t 845-454-9704; fx 855-320-8735

PROJECT TITLE: **OSCC PE ROOFTOP  
UNIT REPLACEMENT**  
COUNTY JOB NO.: OSCC-2023-19

FE PROJECT No:  
22-059

SCALE:  
N.T.S.

DESIGNED BY:  
JDD

DRAWN BY:  
SRB

CHECKED BY:  
EDF

HE-702

SKETCH TITLE:  
**GENERAL REVISION #1**

REF. DWG. TITLE:  
**MECH/ELEC.  
SCHEDULES**

SKETCH No:  
SKHE-702.1

ISSUE DATE:  
10/26/22