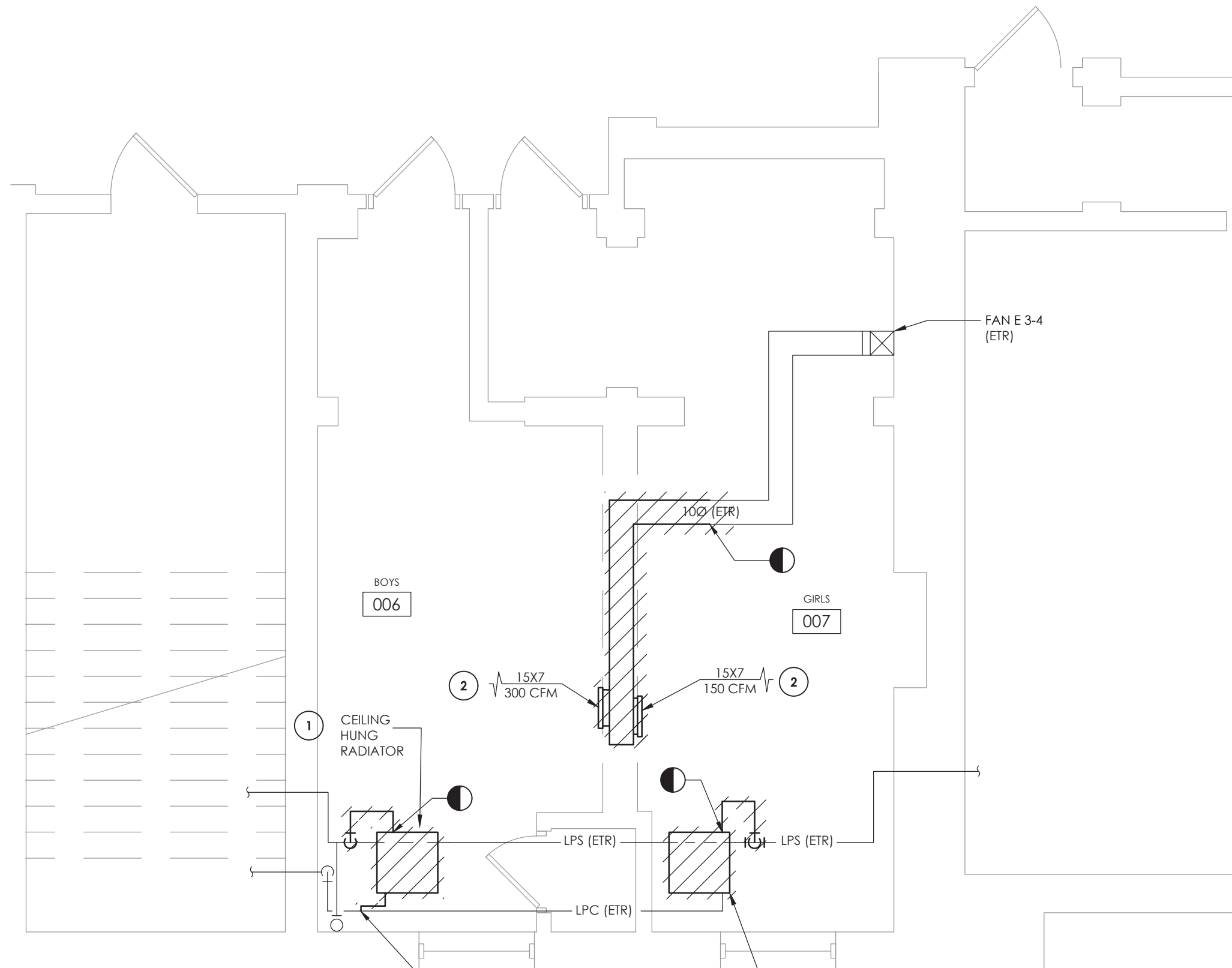
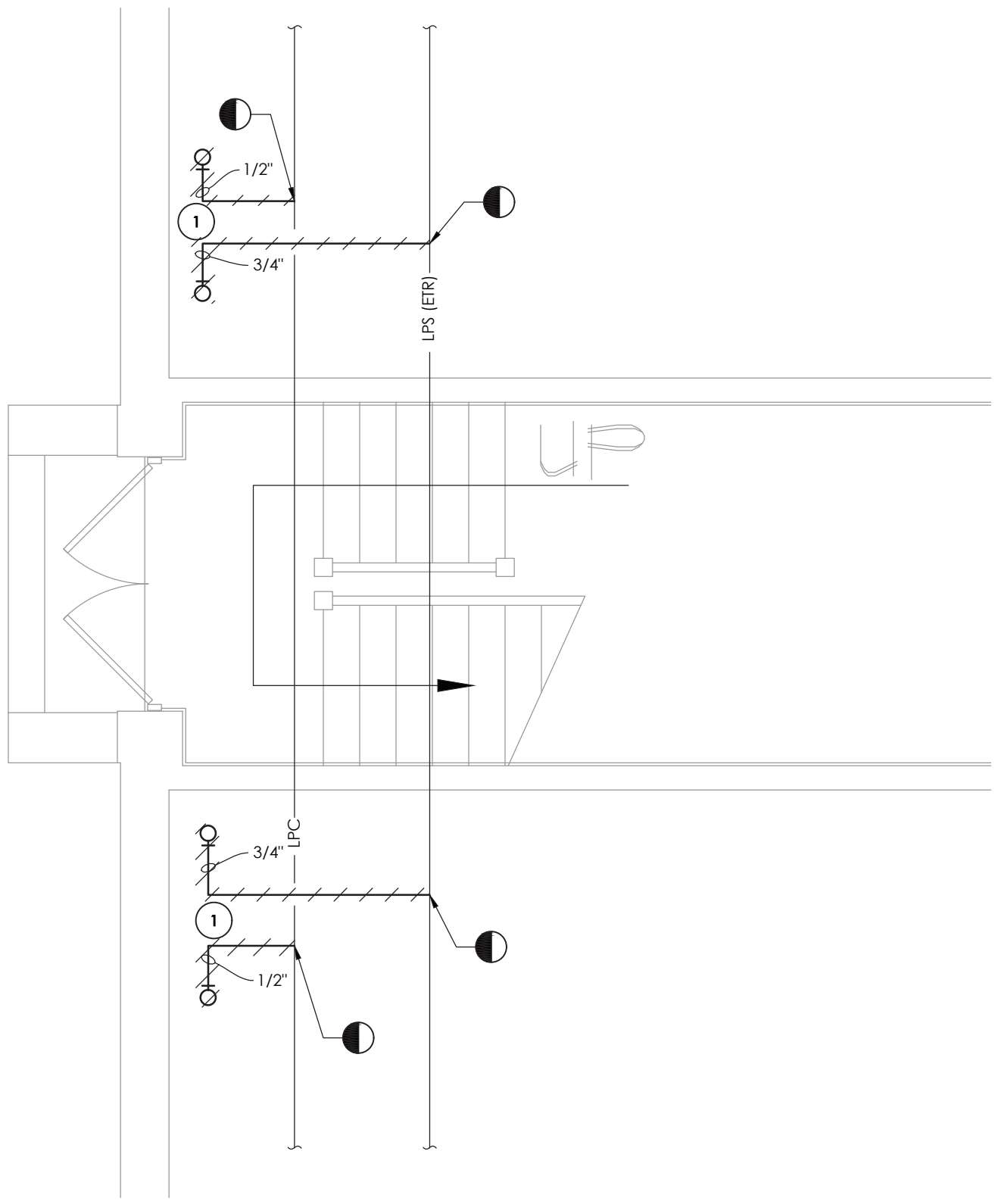


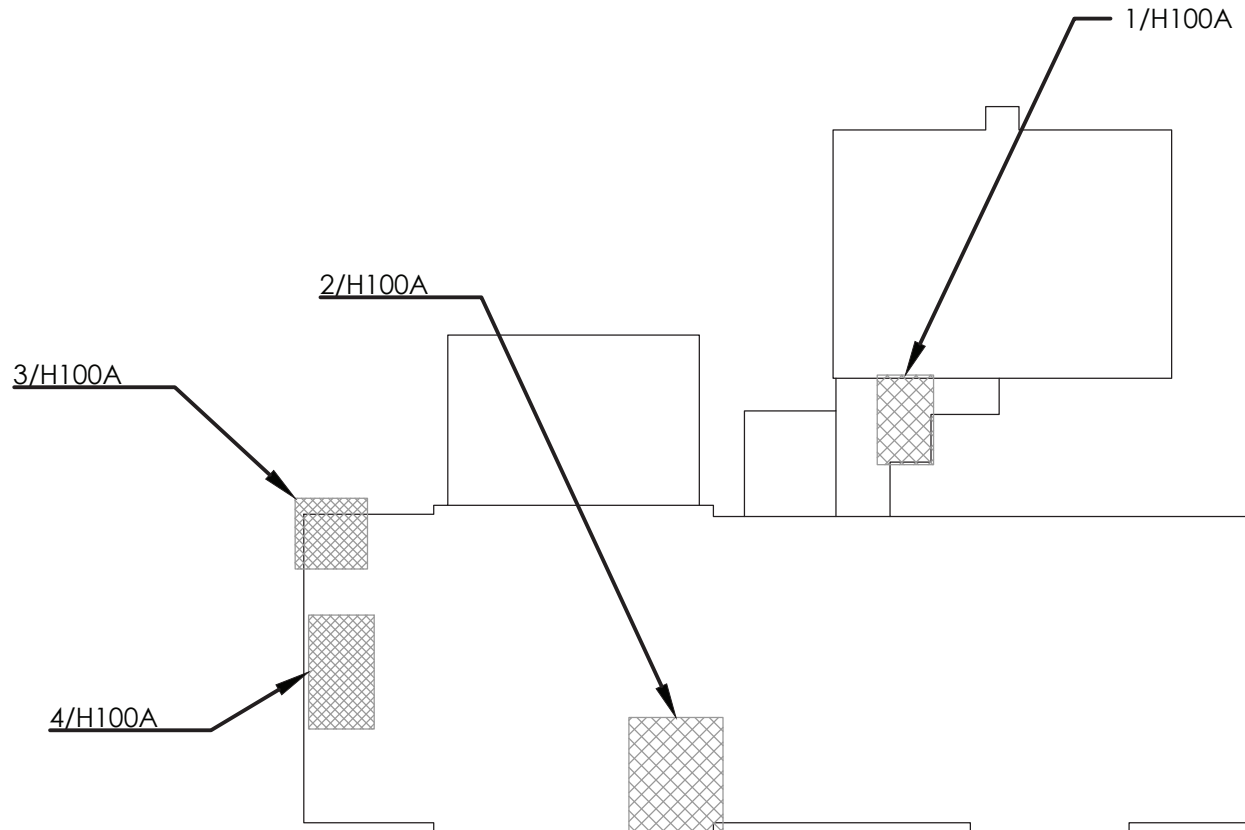
1 TOILET ROOM DEMOLITION PLAN  
H100A SCALE: 1/4" = 1'-0"



2 TOILET ROOM DEMOLITION PLAN  
H100A SCALE: 1/4" = 1'-0"



3 TOILET ROOM DEMOLITION PLAN  
H100A SCALE: 1/4" = 1'-0"



KEY PLAN  
SCALE: NTS

GENERAL NOTES:

1. FIELD VERIFY EXACT DUCT AND PIPING LOCATIONS AND SIZES PRIOR TO DEMOLITION AND COORDINATE SPECIFIC POINTS OF REMOVAL LOCATIONS BASED ON NEW UNIT DIMENSIONS AND CONFIGURATIONS

KEY NOTES:

1. REMOVE EXISTING STEAM RADIATOR IN ITS ENTIRETY INCLUDING ALL PIPING, TRAPS, CONTROLS AND THERMOSTAT. REMOVE PIPING BACK TO MAINS AND CAP.
2. REMOVE EXISTING EXHAUST GRILLE AND DUCTWORK TO POINT INDICATED. PREPARE FOR NEW WORK.
3. REMOVE EXISTING VACUUM PUMP AND PIPING TO VALVE AND CAP. PREPARE FOR NEW WORK.
4. REMOVE EXISTING ELECTRIC WALL HEATER. DISCONNECT FROM EXISTING WIRING. PREPARE FOR NEW WORK.



**CPLteam.com**  
ARCHITECTURE • ENGINEERING • PLANNING

50 FRONT STREET, SUITE 202  
NEWBURGH, NEW YORK 12550  
TEL (800) 274-9000

REVISIONS	DESCRIPTION	
	NO.	DATE



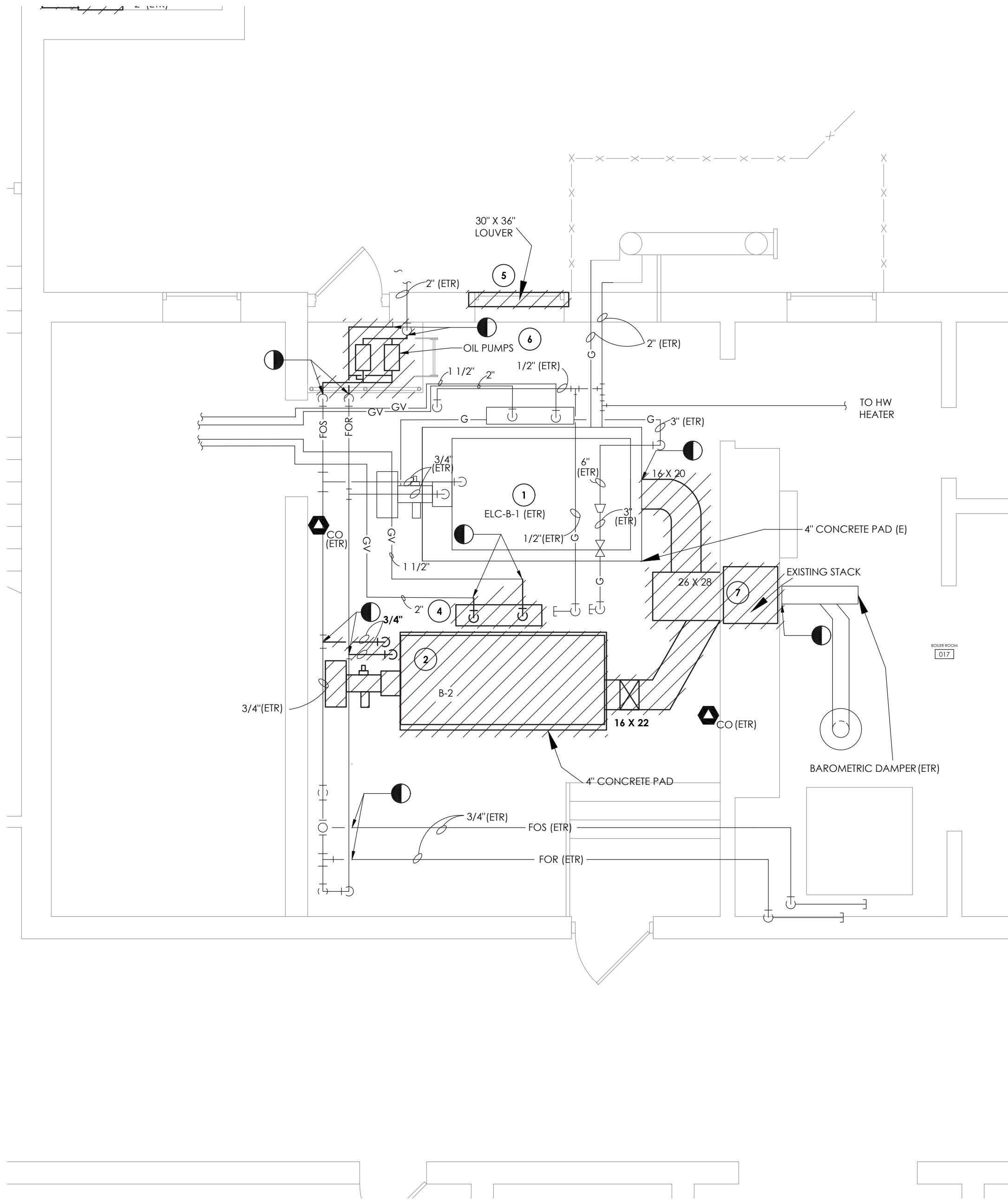
POUGHKEEPSIE CITY SCHOOL DISTRICT  
2020 CAPITAL IMPROVEMENT PROJECT  
PHASE 1B: BUILDING IMPROVEMENTS

- ☐ POUGHKEEPSIE HIGH SCHOOL: SED# 13-15-00-01-0-007-018
- ☐ POUGHKEEPSIE MIDDLE SCHOOL: SED# 13-15-00-01-0-008-021
- ☐ POUGHKEEPSIE JUNIOR HIGH SCHOOL: SED# 13-15-00-01-0-009-014
- ☐ KREGER ELEMENTARY SCHOOL: SED# 13-15-00-01-0-004-014
- ☐ MORSE ELEMENTARY SCHOOL: SED# 13-15-00-01-0-005-014
- ☐ WARRING ELEMENTARY SCHOOL: SED# 13-15-00-01-0-006-013
- ☐ WARRING ELEMENTARY SCHOOL: SED# 13-15-00-01-0-005-013
- ☐ COLUMBIUS ELEMENTARY SCHOOL: SED# 13-15-00-01-0-001-014

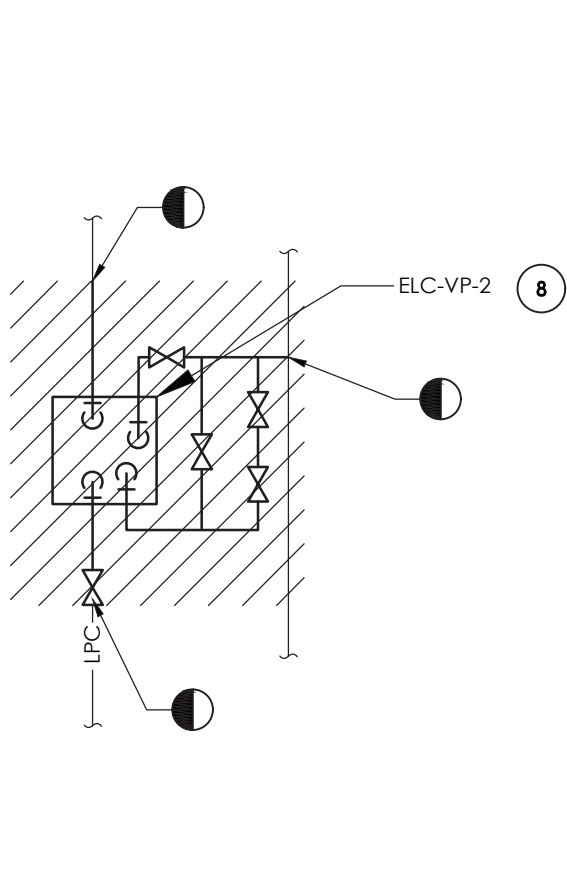
DATE	DRAWN	CHECKED
10/20/2021	BEF	AJS
SCALE: 1/4" = 1'-0"		
SHEET TITLE		
SMITH SCHOOL BASEMENT TOILET ROOM DEMOLITION PLANS		

PROJECT NUMBER  
14078.09

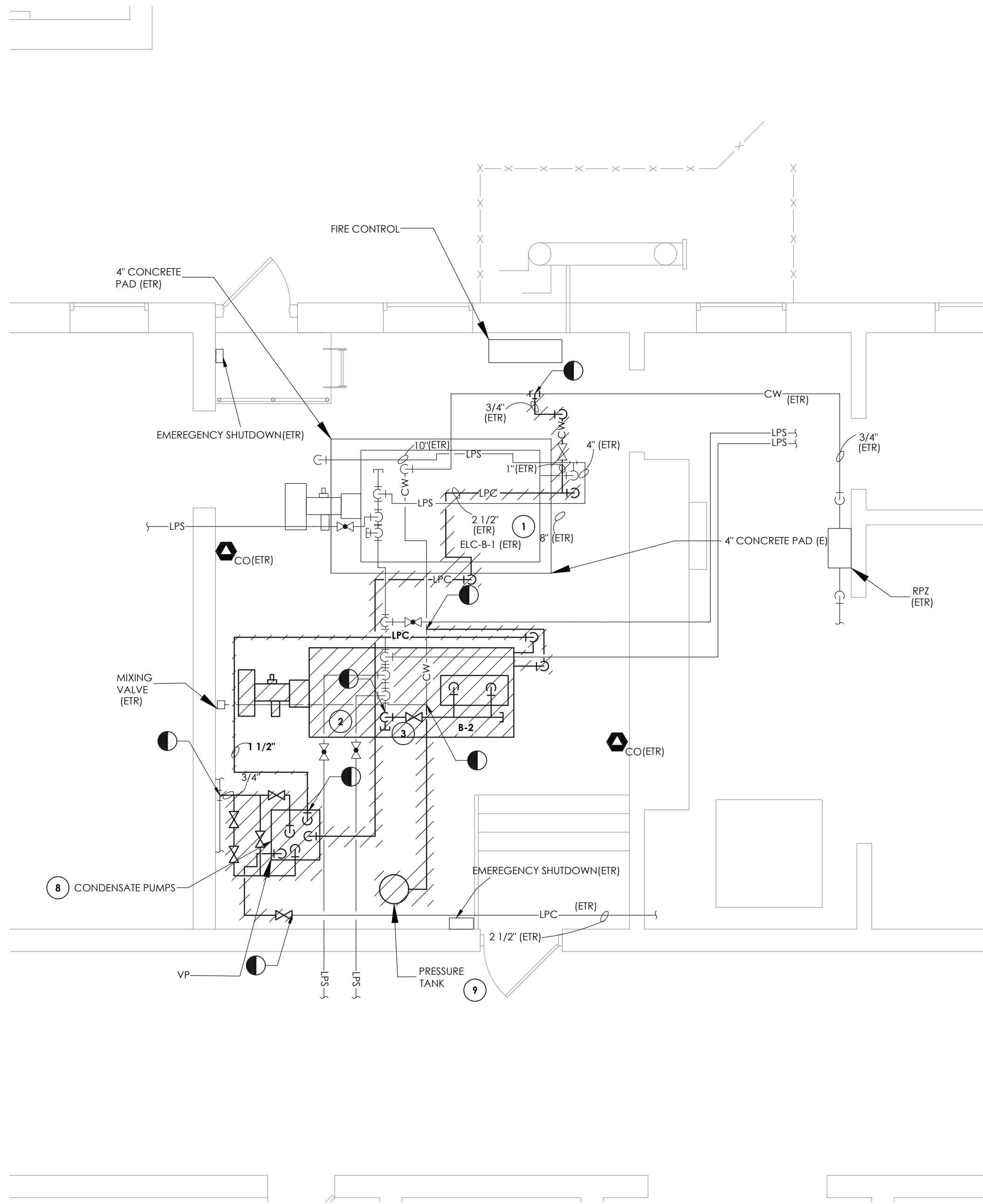
**ELC**  
**H100A**  
DRAWING NUMBER



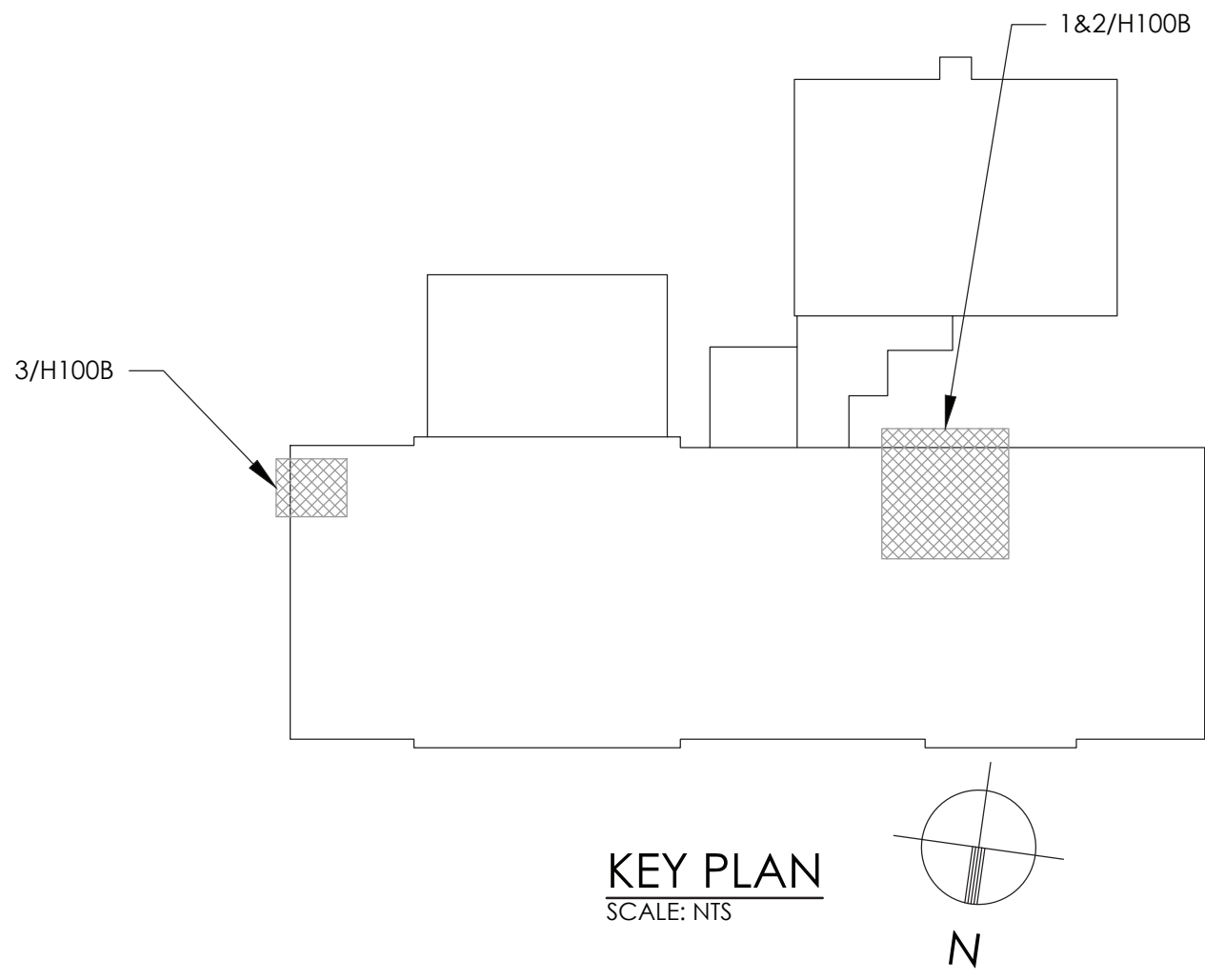
**1 NATURAL GAS, OIL AND FLUE DEMOLITION PLAN**  
SCALE: 1/4" = 1'-0"



**3 VACUUM PUMP DEMOLITION PLAN**  
SCALE: 1/4" = 1'-0"



**2 DOMESTIC COLD WATER AND LOW PRESSURE CONDENSATE DEMOLITION PLAN**  
SCALE: 1/4" = 1'-0"



**GENERAL NOTES:**

1. FIELD VERIFY EXACT DUCT AND PIPING LOCATIONS AND SIZES PRIOR TO DEMOLITION AND COORDINATE SPECIFIC POINTS OF REMOVAL LOCATIONS BASED ON NEW UNIT DIMENSIONS AND CONFIGURATIONS.
2. CONTRACTOR SHALL CLEAN AND INSPECT EXISTING CHIMNEY IN ACCORDANCE WITH 2020 IMC SECTION 801.18.

**KEY NOTES:**

1. EXISTING WEIL MCLAIN 94-1294 BOILER AND POWER FLAME WCR3-GO-25 TO REMAIN.
2. REMOVE EXISTING BOILER IN ITS ENTIRETY INCLUDING BURNER AND CONTROLS. DISCONNECT STEAM SUPPLY, CONDENSATE RETURN, FOS & R.GAS LINES TO POINTS INDICATED AND GAS TRAIN. PREPARE FOR NEW WORK.
3. REMOVE AND PREPARE NEW WORK FOR STEAM ISOLATION VALVE.
4. COORDINATE SCHEDULING ALL WORK WITH THE OWNER TO ISOLATE AND PREPARE FUEL GAS PIPING FOR THE DEMOLITION WORK. DISCONNECT AND REMOVE PIPING AS SHOWN. PREPARE REMAINING PIPING FOR NEW WORK.
5. REMOVE EXISTING WALL LOUVER AND PREPARE OPENING FOR NEW WORK.
6. REMOVE EXISTING FUEL OIL PUMPS IN THEIR ENTIRETY. DISCONNECT OIL PIPING TO POINTS INDICATED. PREPARE FOR NEW WORK.
7. DISCONNECT AND REMOVE EXISTING BOILER STACK AND BREACHING IN ITS ENTIRETY FOR BOTH REMOVED BOILER AND EXISTING TO REMAIN BOILER CES-B-1. DISCONNECT EXISTING HOT WATER HEATER FLUE FROM BREECHING AND PREPARE FOR NEW WORK.
8. REMOVE EXISTING CONDENSATE PUMPS IN THEIR ENTIRETY. DISCONNECT CONDENSATE PIPING TO POINTS INDICATED. PREPARE FOR NEW WORK.
9. REMOVE EXISTING FLASH TANK AND PIPING IN ITS ENTIRETY. REMOVE COLD WATER PIPING BACK TO POINT INDICATED AND PREPARE FOR NEW WORK.

**CPLteam.com**  
ARCHITECTURE • ENGINEERING • PLANNING

50 FRONT STREET, SUITE 202  
NEWBURGH, NEW YORK 12550  
TEL (800) 274-9000

REVISIONS	NO.	DATE	BY	DESCRIPTION



**POUGHKEEPSIE CITY SCHOOL DISTRICT**  
**2020 CAPITAL IMPROVEMENT PROJECT**  
**PHASE 1B: BUILDING IMPROVEMENTS**

☐ POUGHKEEPSIE HIGH SCHOOL: SED# 13-15-0001-0-007-018  
☐ POUGHKEEPSIE MIDDLE SCHOOL: SED# 13-15-0001-0-001-021  
☐ POUGHKEEPSIE JUNIOR HIGH SCHOOL: SED# 13-15-0001-0-004-014  
☐ KREGER ELEMENTARY SCHOOL: SED# 13-15-0001-0-004-014  
☐ MORSE ELEMENTARY SCHOOL: SED# 13-15-0001-0-002-014  
☐ WARRING ELEMENTARY SCHOOL: SED# 13-15-0001-0-005-013  
☐ WARRING ELEMENTARY SCHOOL: SED# 13-15-0001-0-005-013  
☐ WARRING ELEMENTARY SCHOOL: SED# 13-15-0001-0-001-014  
☐ WARRING ELEMENTARY SCHOOL: SED# 13-15-0001-0-001-014

DATE	DRAWN	CHECKED
10/20/2021	BEF	AJS

SCALE: 1/4" = 1'-0"

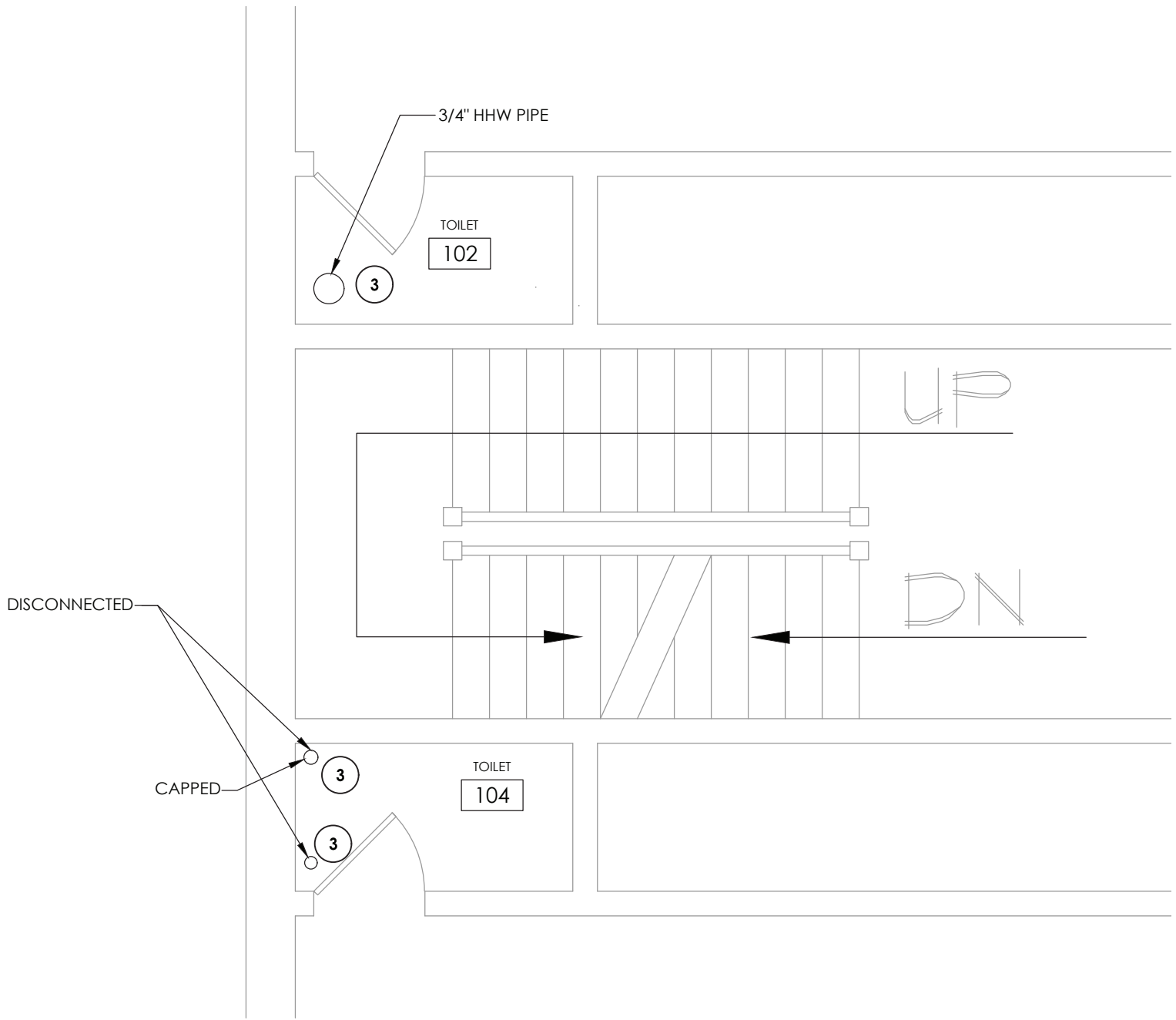
SHEET TITLE  
SMITH SCHOOL  
BOILER ROOM  
DEMOLITION PLANS

PROJECT NUMBER  
14078.09

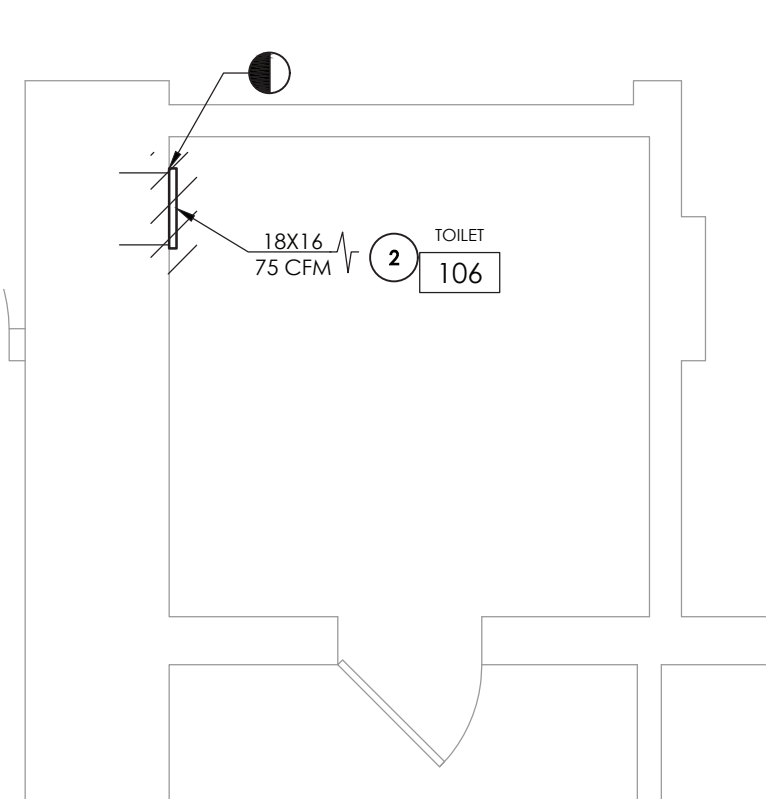
**ELC**  
**H100B**

DRAWING NUMBER

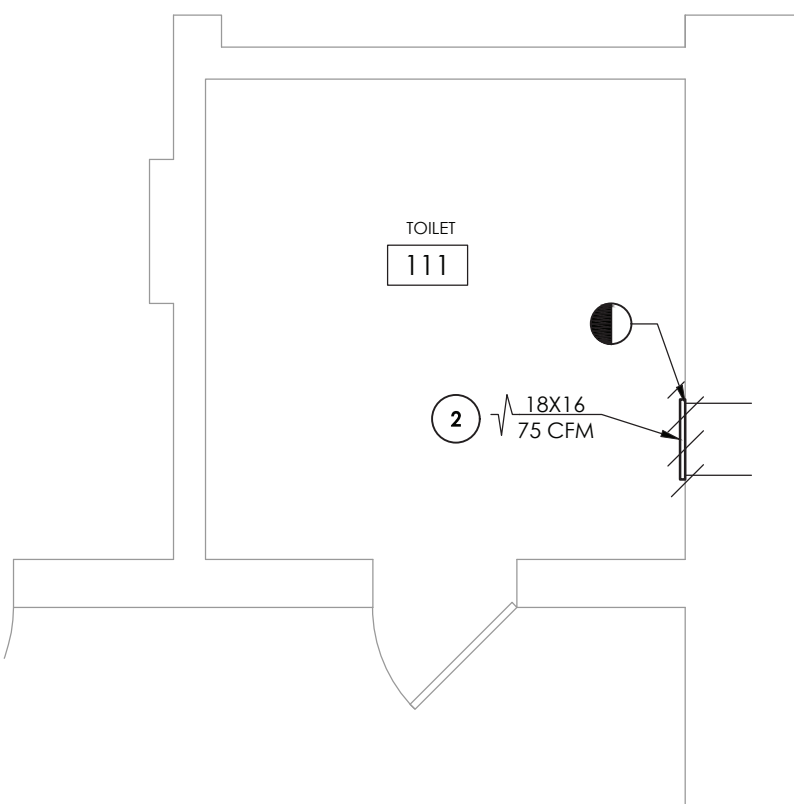




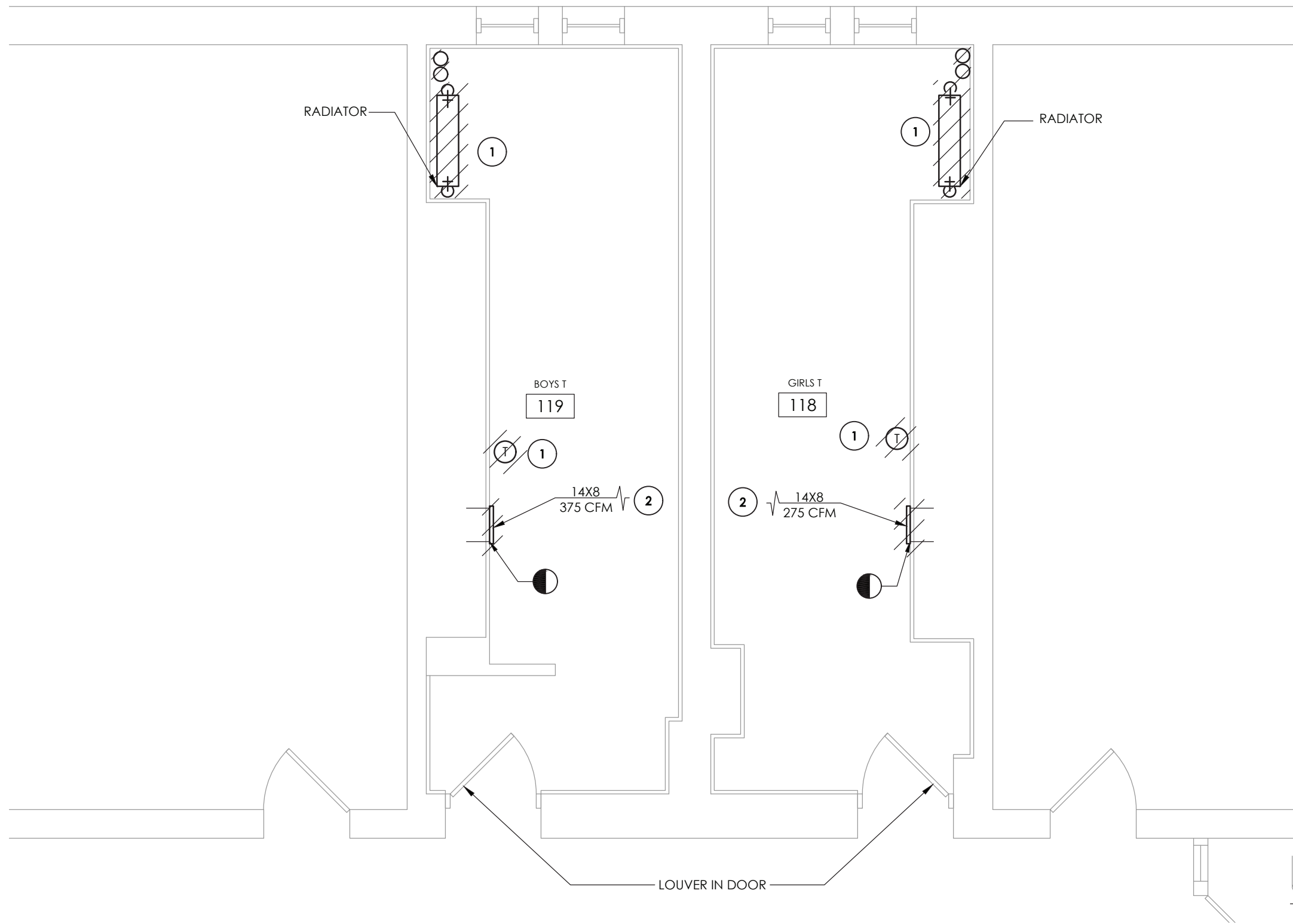
1  
H101  
**TOILET ROOM DEMOLITION PLAN**  
SCALE: 1/4" = 1'-0"



3  
H101  
**TOILET ROOM DEMOLITION PLAN**  
SCALE: 1/4" = 1'-0"

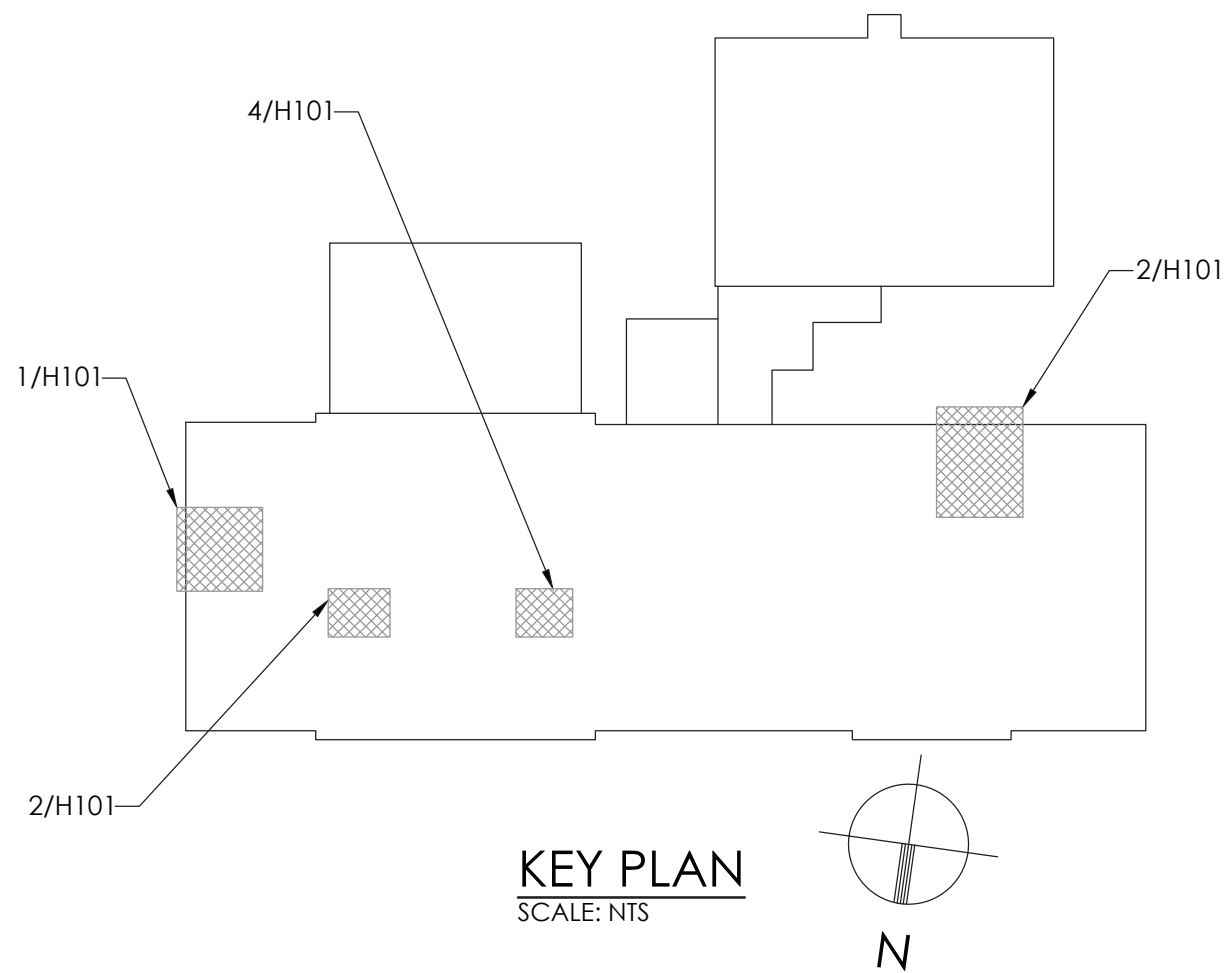


4  
H101  
**TOILET ROOM DEMOLITION PLAN**  
SCALE: 1/4" = 1'-0"



2  
H101  
**TOILET ROOM DEMOLITION PLAN**  
SCALE: 1/4" = 1'-0"

- GENERAL NOTES:**
1. FIELD VERIFY EXACT DUCT AND PIPING LOCATIONS AND SIZES PRIOR TO DEMOLITION AND COORDINATE SPECIFIC POINTS OF REMOVAL LOCATIONS BASED ON NEW UNIT DIMENSIONS AND CONFIGURATIONS
- KEY NOTES:**
- 1 REMOVE EXISTING STEAM RADIATOR IN ITS ENTIRETY INCLUDING ALL PIPING, TRAPS, CONTROLS AND THERMOSTAT. REMOVE PIPING BACK TO MAINS AND CAP.
  - 2 REMOVE EXISTING EXHAUST GRILLE AND PREPARE FOR NEW WORK.
  - 3 REMOVE BACK TO MAIN AS SEEN ON H100A



**KEY PLAN**  
SCALE: NTS

**CPL**

**CPLteam.com**  
ARCHITECTURE • ENGINEERING • PLANNING

50 FRONT STREET, SUITE 202  
NEWBURGH, NEW YORK 12550  
TEL (800) 274-9000

REVISIONS	DESCRIPTION	
	NO.	DATE



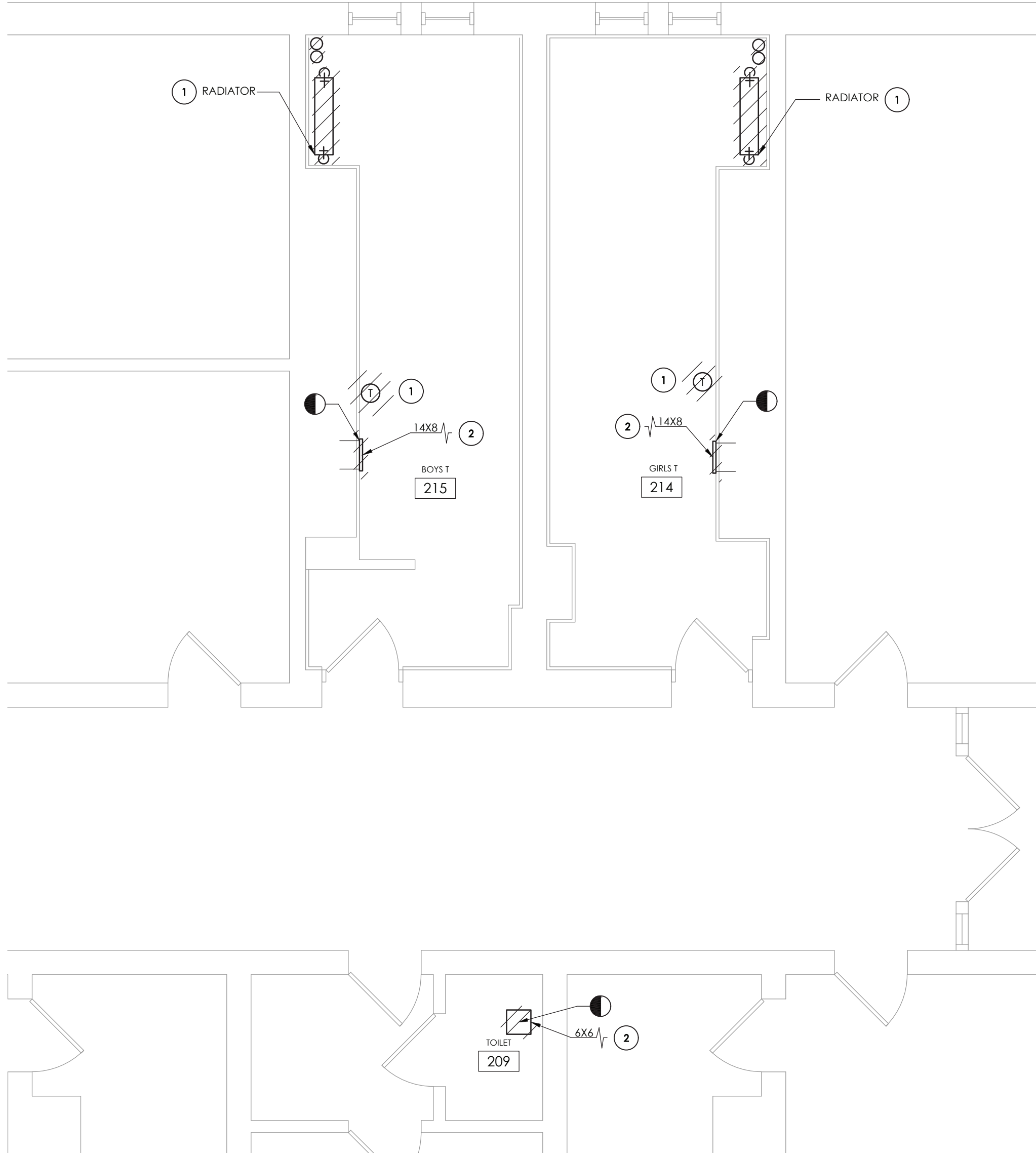
**POUGHKEEPSIE CITY SCHOOL DISTRICT**  
**2020 CAPITAL IMPROVEMENT PROJECT**  
**PHASE 1B: BUILDING IMPROVEMENTS**

- ☐ POUGHKEEPSIE HIGH SCHOOL: SED# 13-15-00-01-0-007-018
- ☐ POUGHKEEPSIE MIDDLE SCHOOL: SED# 13-15-00-01-0-008-021
- ☐ POUGHKEEPSIE ELEMENTARY SCHOOL: SED# 13-15-00-01-0-009-014
- ☐ KREGER ELEMENTARY SCHOOL: SED# 13-15-00-01-0-004-014
- ☐ MORSE ELEMENTARY SCHOOL: SED# 13-15-00-01-0-002-014
- ☐ WARRING ELEMENTARY SCHOOL: SED# 13-15-00-01-0-005-013
- ☐ WASHINGTON ELEMENTARY SCHOOL: SED# 13-15-00-01-0-006-014
- ☐ COLUMBIUS ELEMENTARY SCHOOL: SED# 13-15-00-01-0-001-014

DATE	DRAWN	CHECKED
10/20/2021	BEF	AJS
SCALE: 1/4" = 1'-0"		
SHEET TITLE		
SMITH SCHOOL FIRST FLOOR TOILET ROOM DEMOLITION PLANS		

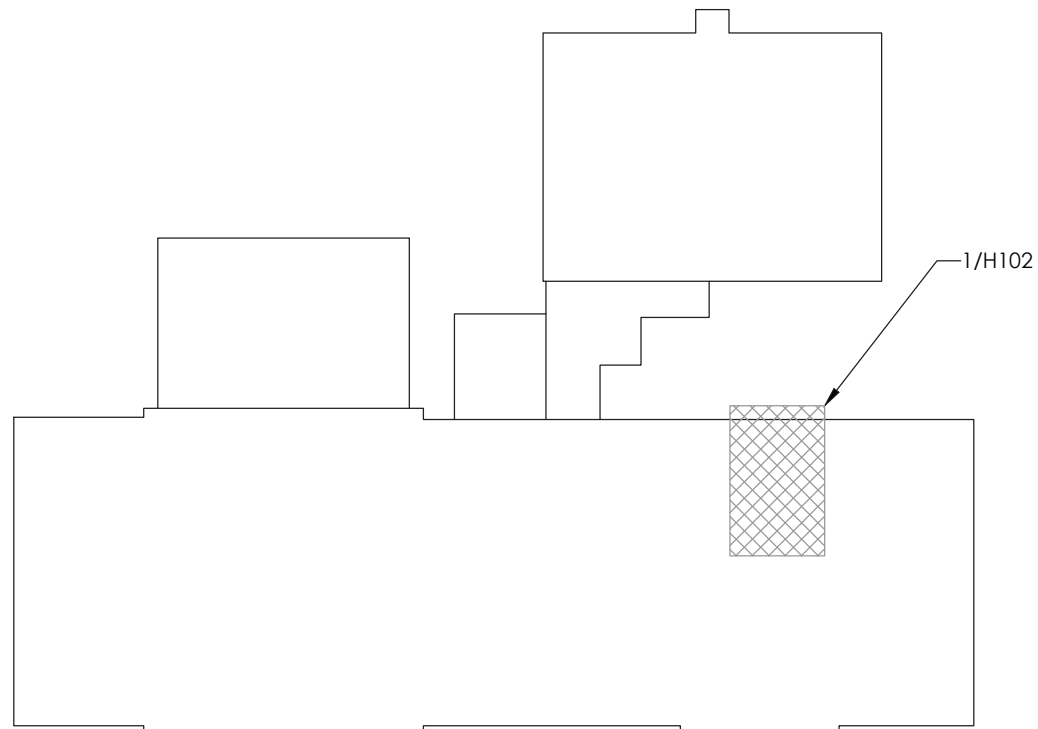
PROJECT NUMBER  
14078.09

**ELC**  
**H101**  
DRAWING NUMBER



1  
H102  
**TOILET ROOM DEMOLITION**  
SCALE: 1/4" = 1'-0"

- GENERAL NOTES:**
1. FIELD VERIFY EXACT DUCT AND PIPING LOCATIONS AND SIZES PRIOR TO DEMOLITION AND COORDINATE SPECIFIC POINTS OF REMOVAL LOCATIONS BASED ON NEW UNIT DIMENSIONS AND CONFIGURATIONS
- KEY NOTES:**
- 1 REMOVE EXISTING STEAM RADIATOR IN ITS ENTIRETY INCLUDING ALL PIPING, TRAPS, CONTROLS AND THERMOSTAT. REMOVE PIPING BACK TO MAINS AND CAP.
  - 2 REMOVE EXISTING EXHAUST GRILLE AND DISCONNECT FROM EXISTING DUCTWORK. PREPARE FOR NEW WORK.



**KEY PLAN**  
SCALE: NTS



**CPLteam.com**  
ARCHITECTURE • ENGINEERING • PLANNING

50 FRONT STREET, SUITE 202  
NEWBURGH, NEW YORK 12550  
TEL (800) 274-9000

REVISIONS		DESCRIPTION	
NO.	DATE	BY	DESCRIPTION



**POUGHKEEPSIE CITY SCHOOL DISTRICT**  
**2020 CAPITAL IMPROVEMENT PROJECT**  
**PHASE 1B: BUILDING IMPROVEMENTS**

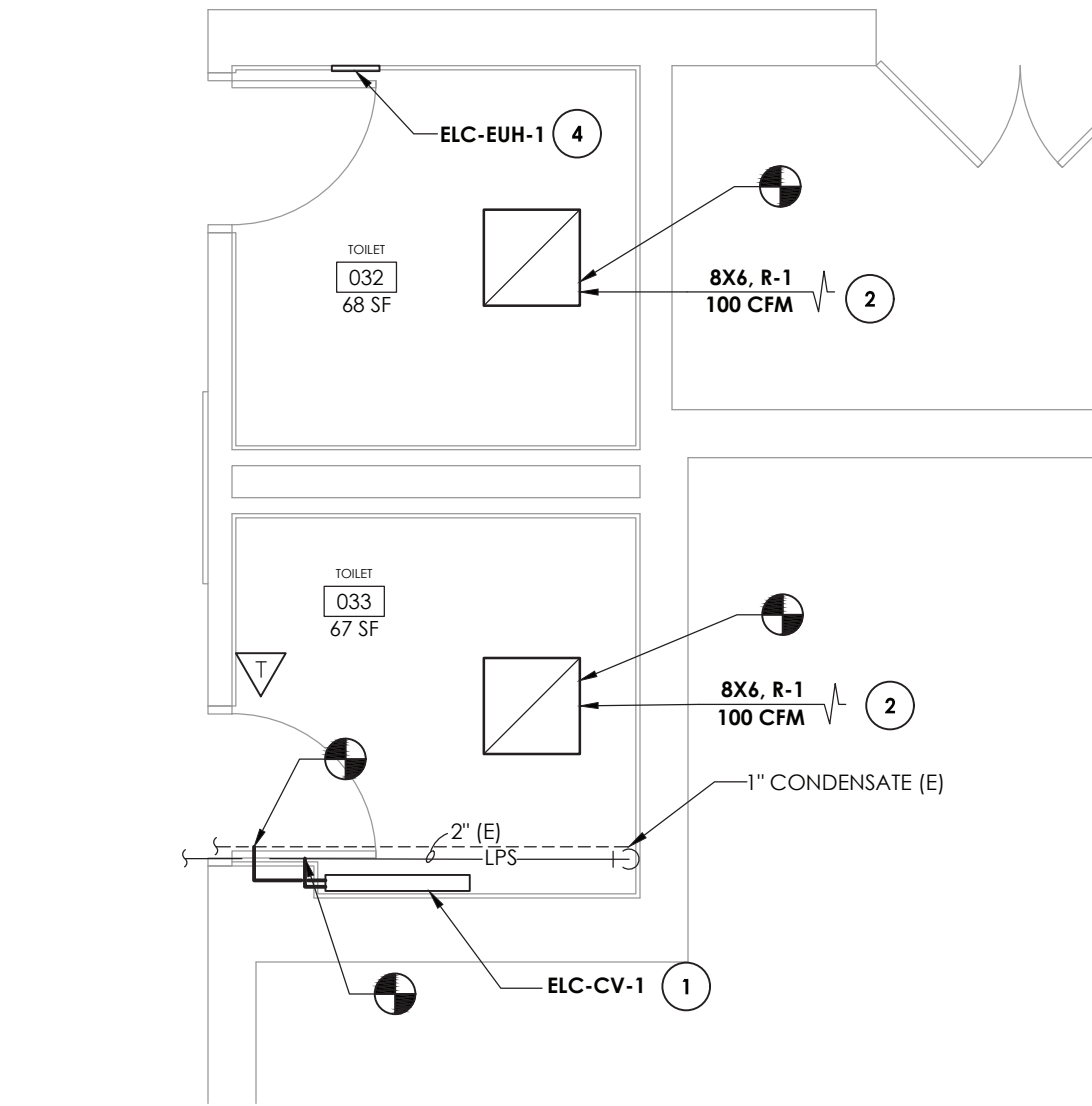
☐ POUGHKEEPSIE HIGH SCHOOL: SED# 13-15-00-01-0-007-018  
☐ POUGHKEEPSIE MIDDLE SCHOOL: SED# 13-15-00-01-0-008-021  
☐ POUGHKEEPSIE JUNIOR HIGH SCHOOL: SED# 13-15-00-01-0-009-014  
☐ KREGER ELEMENTARY SCHOOL: SED# 13-15-00-01-0-004-014  
☐ MORSE ELEMENTARY SCHOOL: SED# 13-15-00-01-0-002-014  
☐ WARRING ELEMENTARY SCHOOL: SED# 13-15-00-01-0-005-013  
☐ WASHINGTON ELEMENTARY SCHOOL: SED# 13-15-00-01-0-006-014  
☐ COLUMBUS ELEMENTARY SCHOOL: SED# 13-15-00-01-0-001-014

DATE	DRAWN	CHECKED
10/20/2021	BEF	AJS
SCALE: 1/4" = 1'-0"		
SHEET TITLE		
SMITH SCHOOL SECOND FLOOR TOILET ROOM DEMOLITION PLANS		

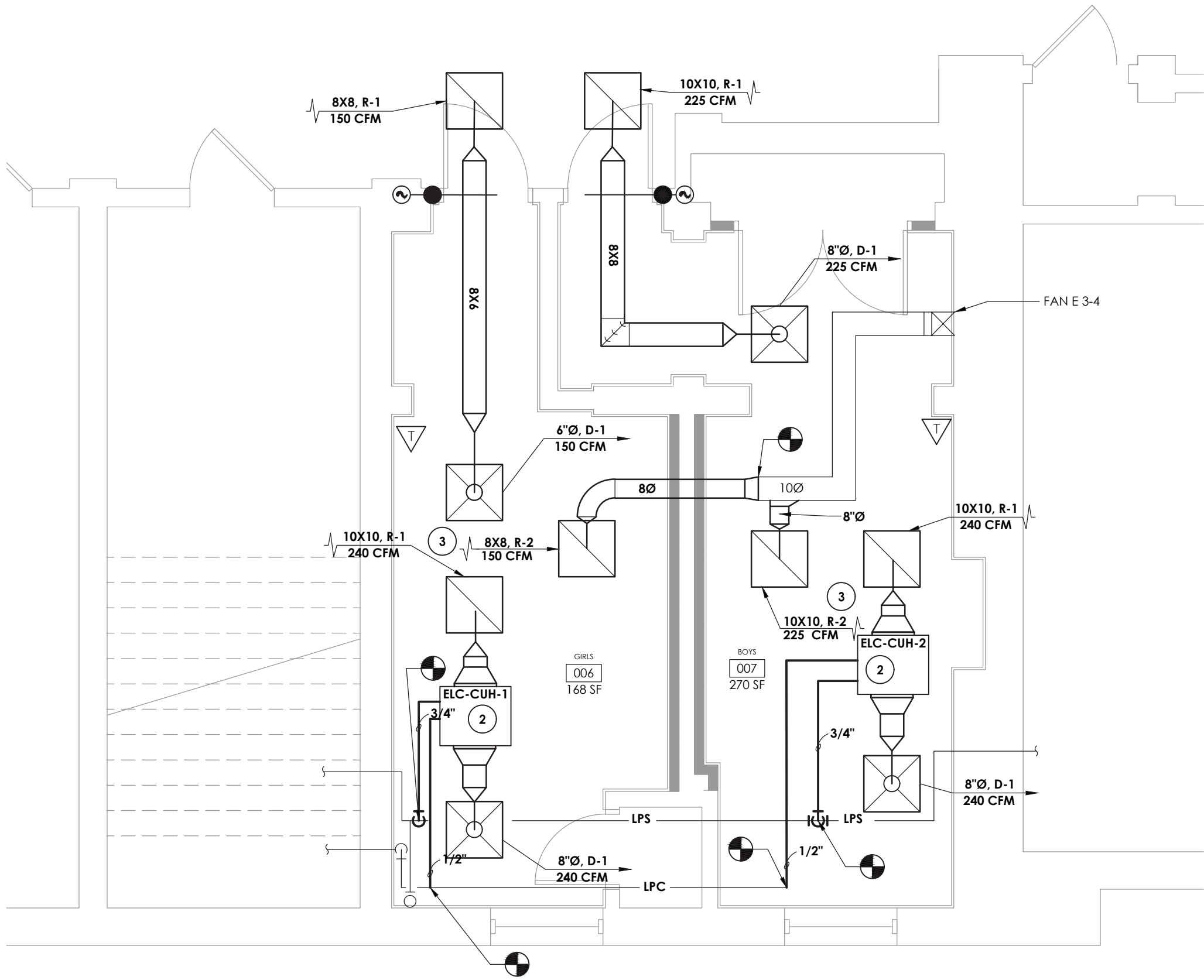
PROJECT NUMBER  
14078.09

**ELC**  
**H102**

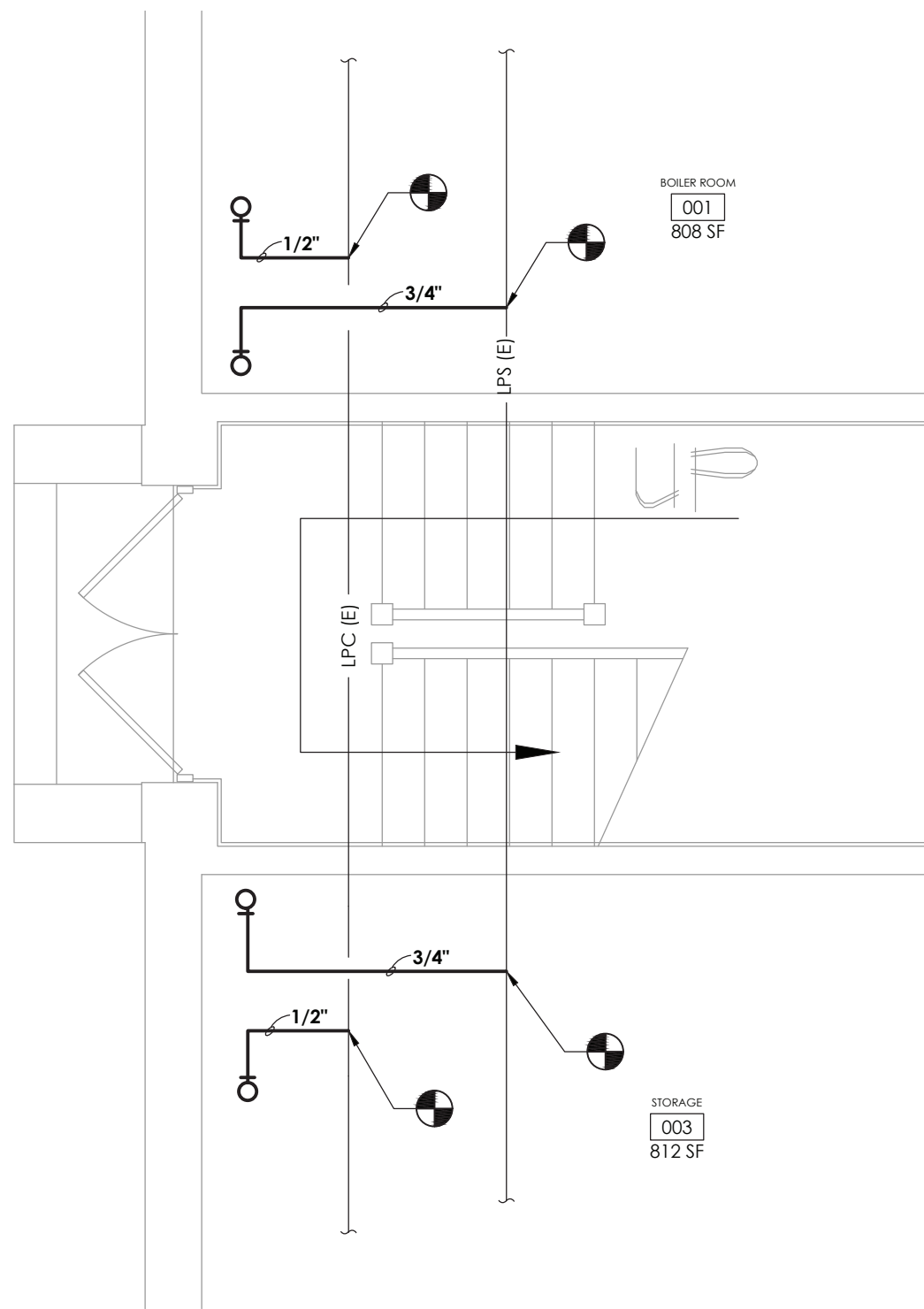
DRAWING NUMBER



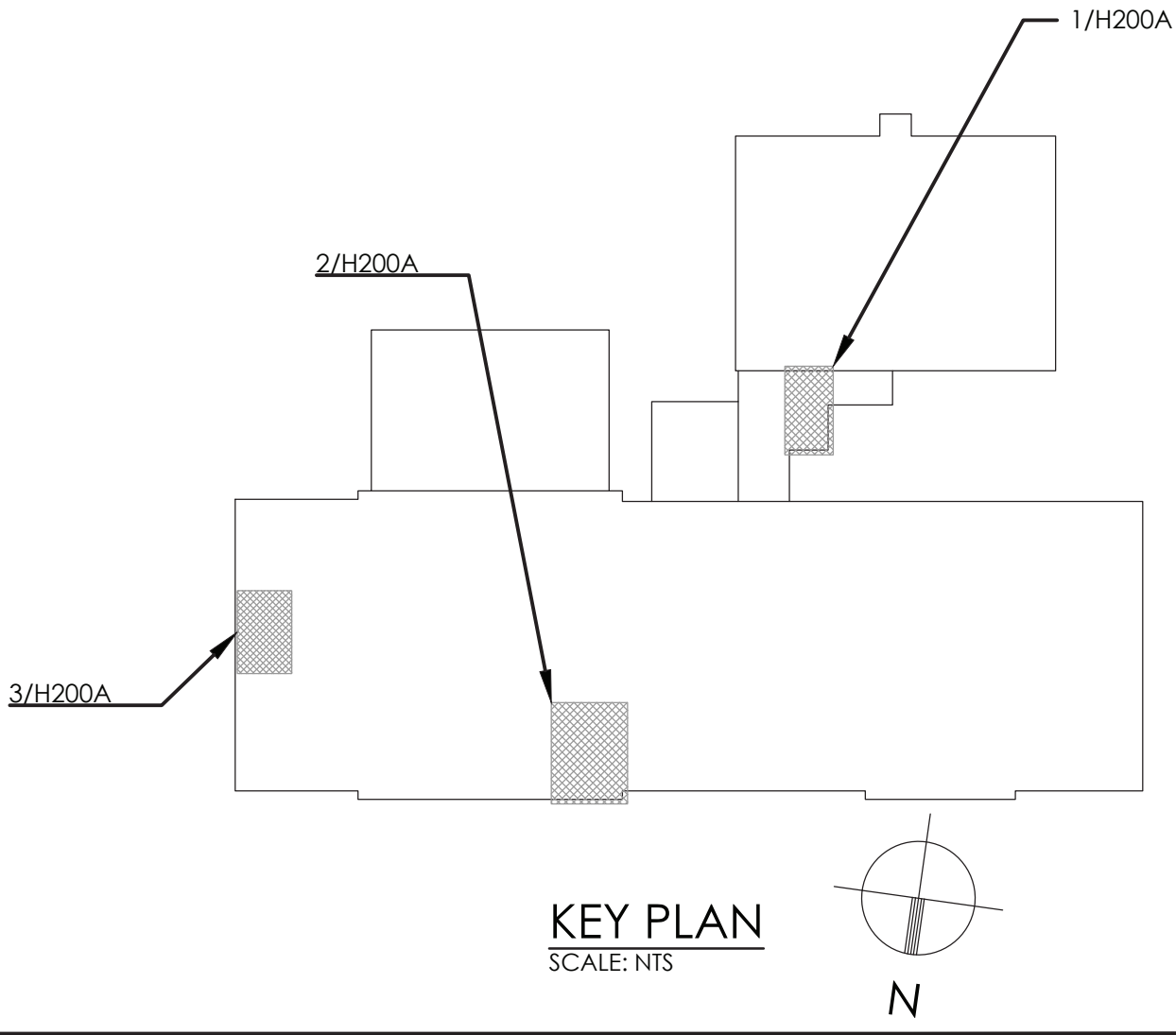
1  
H200A  
TOILET ROOM 1 NEW WORK PLAN  
SCALE: 1/4" = 1'-0"



2  
H200A  
TOILET ROOM 2 NEW WORK PLAN  
SCALE: 1/4" = 1'-0"



3  
H200A  
MECHANICAL PIPING NEW WORK PLAN  
SCALE: 1/4" = 1'-0"



GENERAL NOTE:

1. ALL CONTROLS WORK SHALL BE PERFORMED BY TECHNICAL BUILDING SERVICES, INC.  
CONTACT: ED ROCKSTROH  
(P): (518) 885-4444  
(E): edrockstroh@tbscontrols.com

KEY NOTES:

1. CONTRACTOR SHALL PROVIDE NEW WALL MOUNTED CONVECTORS INCLUDING CONTROLS AND THERMOSTAT.
2. CONTRACTOR SHALL PROVIDE NEW CEILING MOUNTED UNIT HEATER INCLUDING CONTROLS AND THERMOSTAT.
3. PROVIDE NEW GRILLE. RECONNECT TO EXISTING DUCTWORK. MODIFY DUCTWORK AS NECESSARY FOR RECONNECTION.
4. PROVIDE NEW WALL RECESSED ELECTRIC UNIT HEATER. RECONNECT TO EXISTING WIRING. PATCH AND MODIFY OPENING AS NECESSARY. CONFIRM VOLTAGE PRIOR TO ORDERING NEW UNIT.

**CPLteam.com**  
ARCHITECTURE • ENGINEERING • PLANNING

50 FRONT STREET, SUITE 202  
NEWBURGH, NEW YORK 12550  
TEL (800) 274-9000

REVISIONS	DESCRIPTION	
	NO.	DATE



POUGHKEEPSIE CITY SCHOOL DISTRICT  
2020 CAPITAL IMPROVEMENT PROJECT  
PHASE 1B: BUILDING IMPROVEMENTS

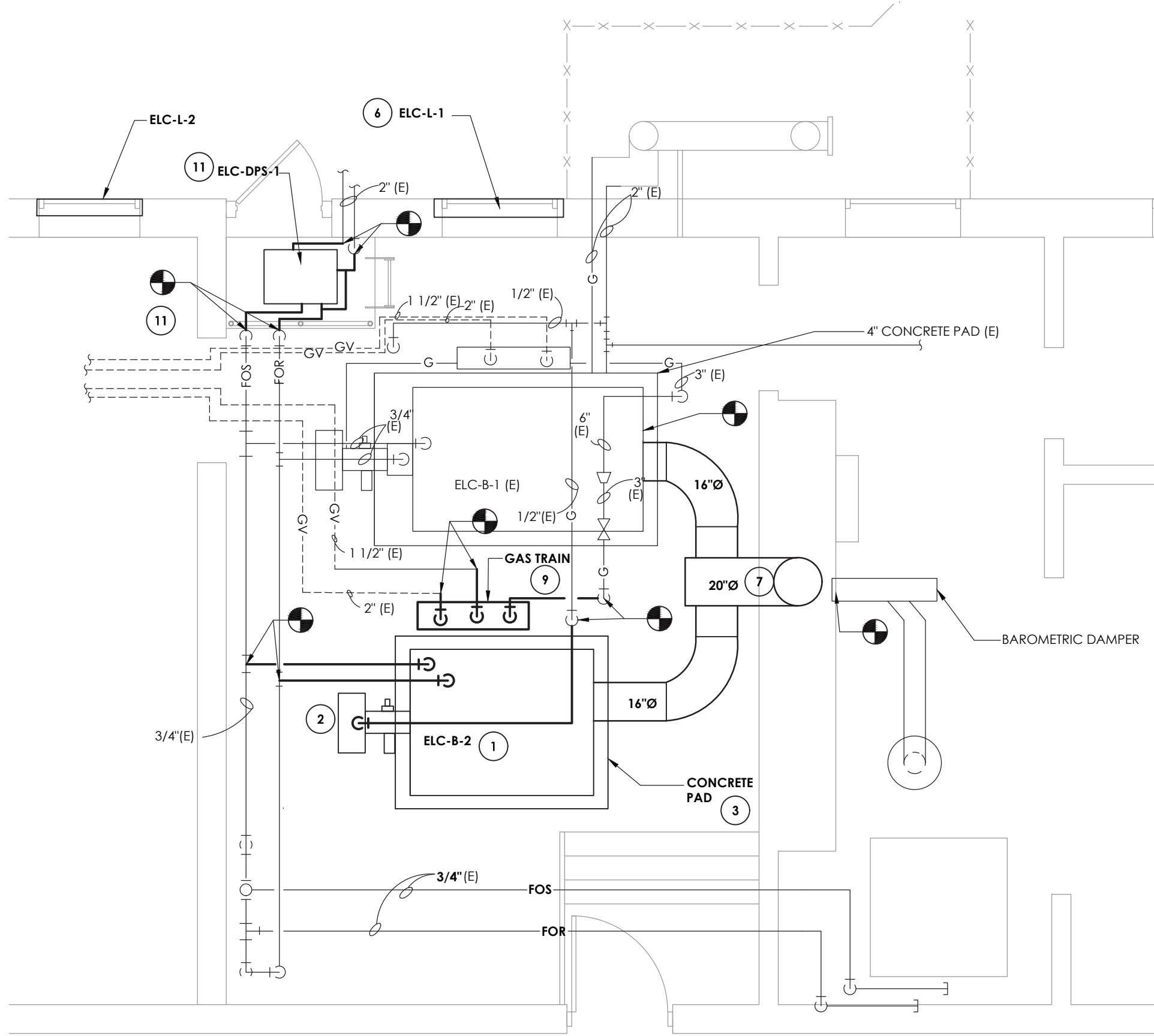
- ☐ POUGHKEEPSIE HIGH SCHOOL: SED# 13-15-00-01-0-007-018
- ☐ POUGHKEEPSIE MIDDLE SCHOOL: SED# 13-15-00-01-0-008-021
- ☐ POUGHKEEPSIE JUNIOR HIGH SCHOOL: SED# 13-15-00-01-0-009-014
- ☐ KREGER ELEMENTARY SCHOOL: SED# 13-15-00-01-0-004-014
- ☐ MORSE ELEMENTARY SCHOOL: SED# 13-15-00-01-0-002-014
- ☐ WARRING ELEMENTARY SCHOOL: SED# 13-15-00-01-0-005-013
- ☐ COLUMBIUS ELEMENTARY SCHOOL: SED# 13-15-00-01-0-001-014

DATE	DRAWN	CHECKED
10/20/2021	BEF	AJS
SCALE: 1/4" = 1'-0"		
SHEET TITLE		
SMITH ELEMENTARY SCHOOL BASEMENT TOILET ROOMS NEW WORK PLANS		

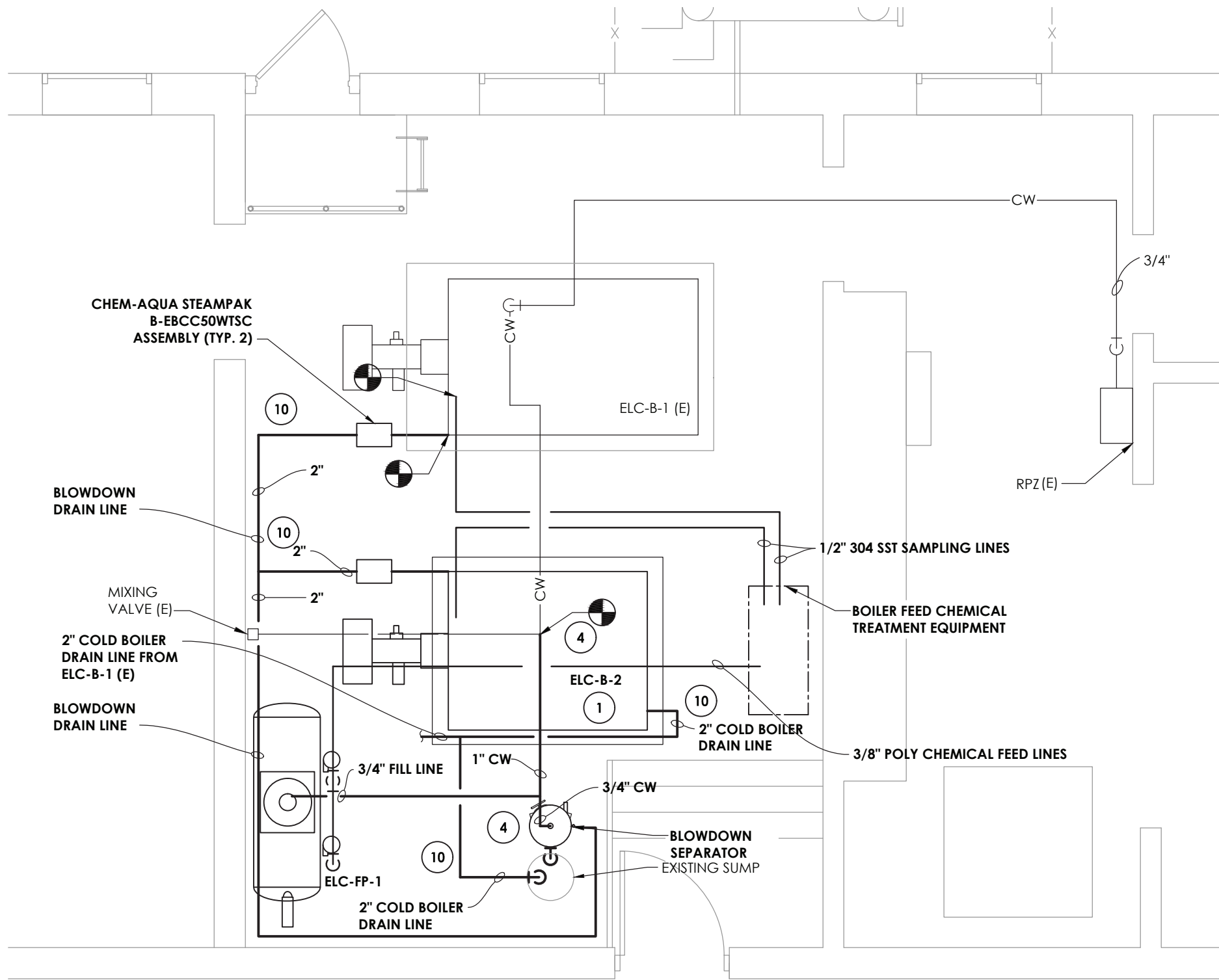
PROJECT NUMBER  
14078.09

**ELC**  
**H200A**  
DRAWING NUMBER

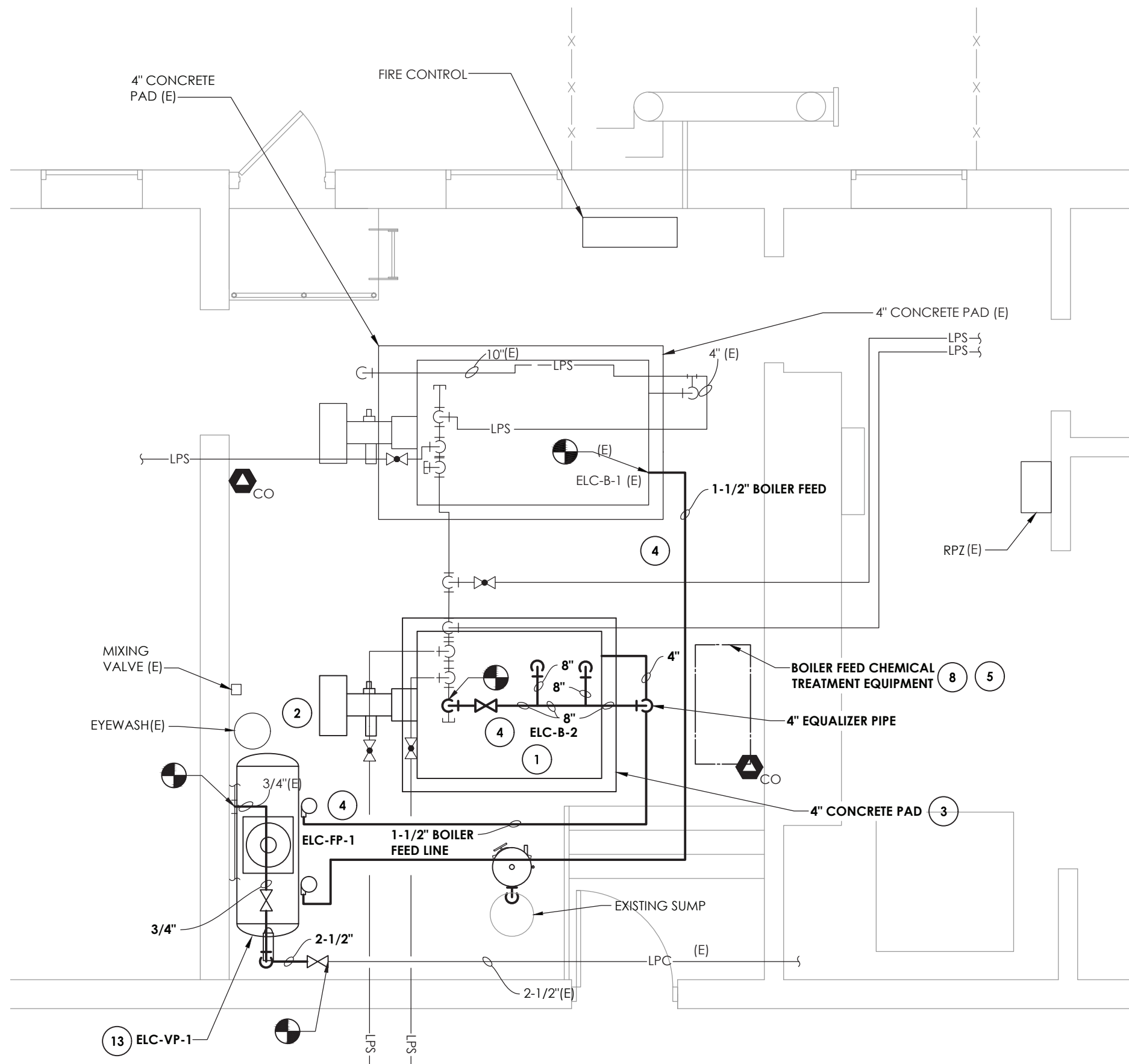




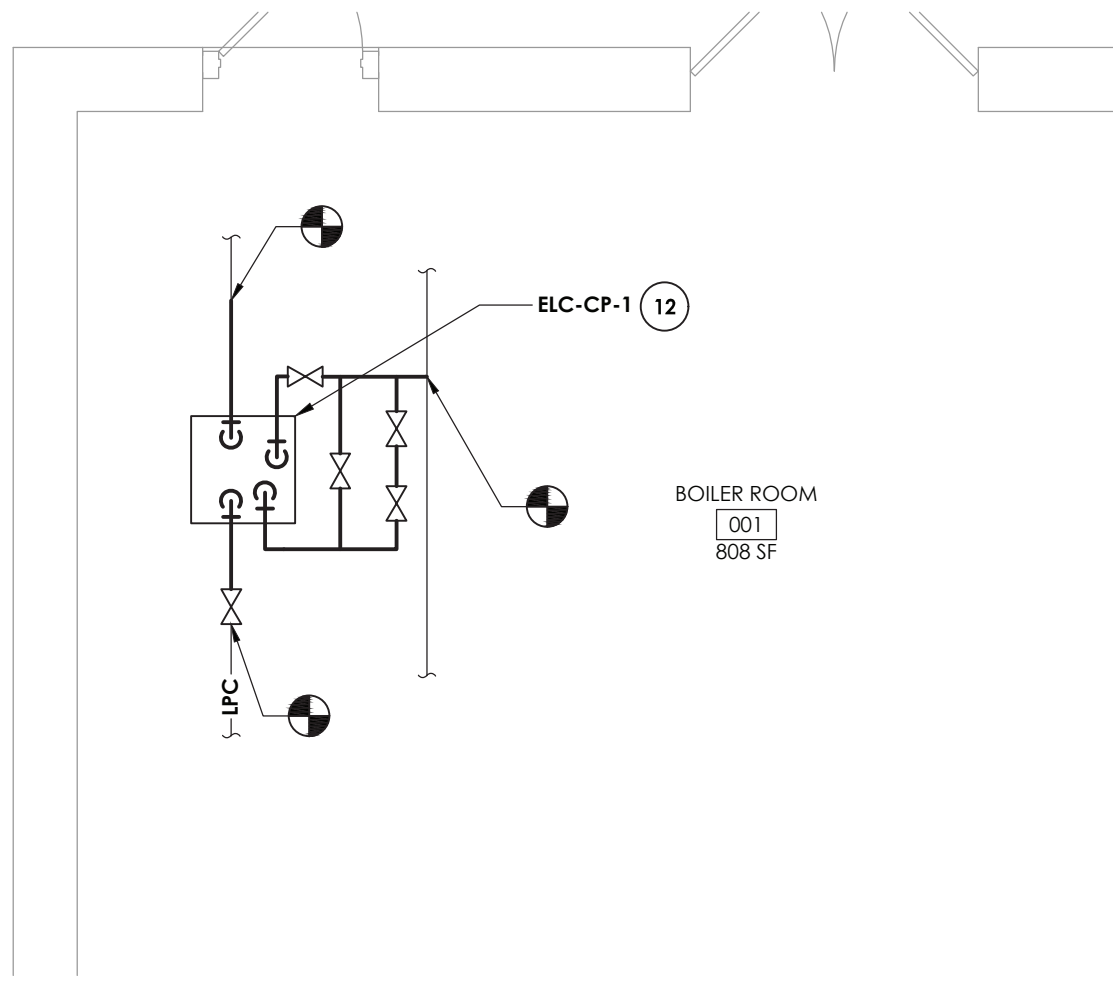
2 NATURAL GAS, OIL AND FLUE NEW WORK PLAN  
H200B SCALE: 1/4" = 1'-0"



3 DRAIN, CHEMICAL LINES AND MAKEUP WATER NEW WORK PLAN  
H200B SCALE: 1/4" = 1'-0"



1 LOW PRESSURE STEAM AND CONDENSATE NEW WORK PLAN  
H200B SCALE: 1/4" = 1'-0"



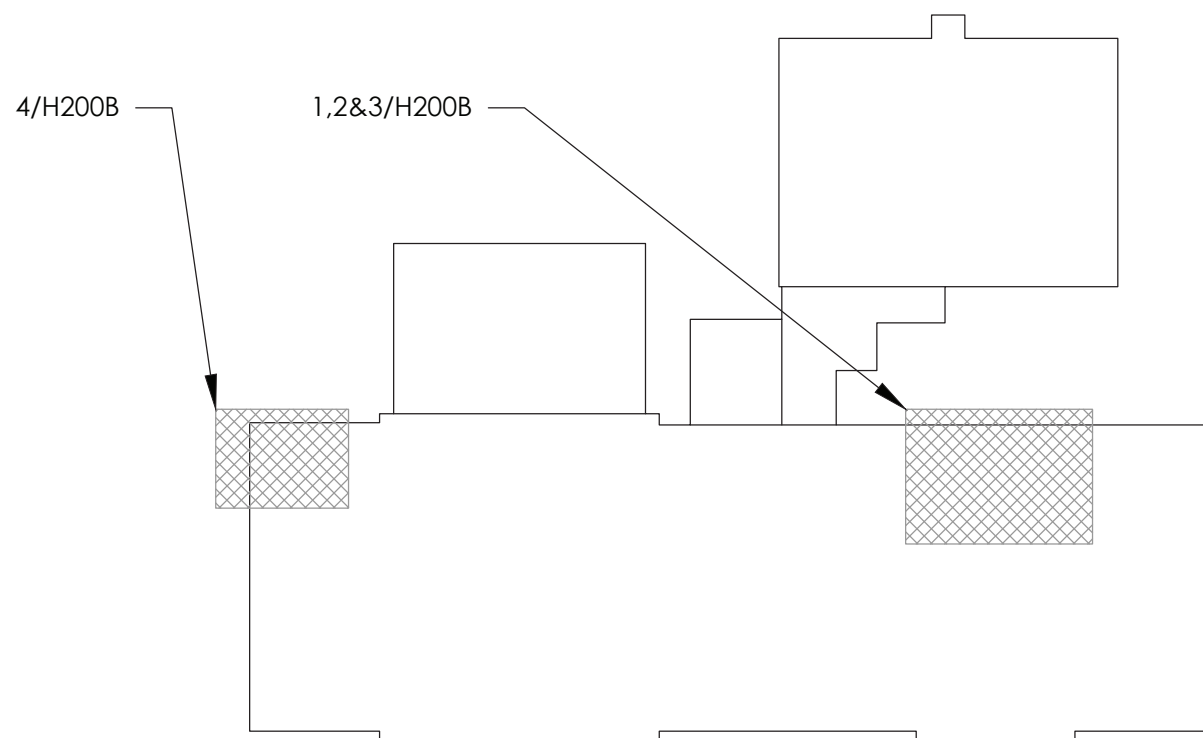
4 VACUUM PUMP NEW WORK PLAN  
H200B SCALE: 1/4" = 1'-0"

GENERAL NOTE:

1. ALL CONTROLS WORK SHALL BE PERFORMED BY TECHNICAL BUILDING SERVICES, INC.  
CONTACT: ED ROCKSTROH  
(P): (518) 885-4444  
(E): edrockstroh@tbscontrols.com

KEY NOTES:

1. CONTRACTOR SHALL PROVIDE AND INSTALL NEW DUAL FUEL BOILER INCLUSIVE OF NEW TRIM, BOILER LEVEL CONTROLS, AND SAFETIES AS REQUIRED BY CODE AND LOCAL AUTHORITIES HAVING JURISDICTION. CONTRACTOR SHALL ENGAGE A FACTORY AUTHORIZED TECHNICIAN TO EXECUTE AND DOCUMENT ALL MANUFACTURES SUGGESTED START UP AND COMMISSIONING TESTING INCLUDING THE BOILER, FUEL SYSTEMS, AND ALL RELATED CONTROL SYSTEMS.
2. PROVIDE A NEW DUAL FUEL MODULATING BURNER SYSTEM INCLUDING AIR DENSITY BURNER MANAGEMENT SYSTEM, AND ANNUNCIATION SYSTEM.
3. INSTALL CONCRETE HOUSEKEEPING PAD PER PLANS TO ACCOMMODATE THE NEW BOILER. PROVIDE NEOPRENE VIBRATION ISOLATION PAD AT BOILER BASE MOUNTING POINTS.
4. PROVIDE AND INSTALL NEW PIPING, HANGERS, SUPPORTS, ACCESSORIES, AND FIBERGLASS INSULATION ACCORDING TO PLANS AND POINTS OF CONNECTION. REFER TO DETAILS AND SCHEDULES. MANUFACTURED FITTINGS SHALL BE INSTALLED ACCORDING TO THE MANUFACTURERS REQUIREMENTS AND TOLERANCES.
5. CONTRACTORS SHALL ENGAGE A LOCAL SUPPLIER AND INSTALL NEW BOILER FEED WATER CHEMICAL TREATMENT SYSTEMS.
6. CONTRACTOR SHALL PROVIDE AND INSTALL WALL LOUVER. CONTRACTOR SHALL FIELD VERIFY AND COORDINATE WITH FIELD CONDITIONS. BALANCE ACCORDING TO SPECIFICATIONS.
7. PROVIDE NEW BOILER BREECHING FOR BOTH NEW AND EXISTING BOILERS. RUN NEW BREECHING UP THROUGH EXISTING CHIMNEY AND TERMINATE 5' ABOVE ROOF LINE WITH VENT C.A.P. RECONNECT EXISTING HOT WATER HEATER FLUE TO NEW VENT STACK. MODIFY DUCTWORK AS NECESSARY.
8. COORDINATE WITH NEW CHEMICAL TREATMENT SYSTEM. RECONNECT BOILER FEED WATER PIPING TO NEW BOILERS PER MANUFACTURING REQUIREMENTS INCLUDING ALL NEW SAFETY AND CONTROLS DEVICES AND CONNECTIONS AS REQUIRED FAR A FULLY FUNCTIONAL AND COMPLIANT SYSTEM. CONTRACTOR SHALL START UP AND COMMISSION BOILER FEED SYSTEM.
9. PROVIDE AND INSTALL NEW FUEL GAS PIPING FROM 6' MAIN INCLUDING GAS TRAIN. CONNECT AS REQUIRED TO EQUIPMENT. REFER TO DETAILS.
10. PROVIDE AND INSTALL NEW DRAIN PIPING AND CONNECTION TO EXISTING FLOOR DRAIN. FOR THE BOILER COLD DRAIN LINES. FIELD VERIFY COLD DRAIN PIPE ROUTING FROM ELC-B-1 (E) TO CONNECT INTO THE NEW COLD DRAIN PIPING FROM ELC-B-2.
11. PROVIDE AND INSTALL FUEL OIL FEED PUMP. CONNECT TO EXISTING FUEL OIL SUPPLY SYSTEM. MODIFY PIPING AS NECESSARY FOR RECONNECTION.
12. PROVIDE AND INSTALL NEW CONDENSATE PUMPS. RECONNECT TO EXISTING CONDENSATE PIPING. MODIFY PIPING AS NECESSARY FOR RECONNECTION.
13. PROVIDE AND INSTALL NEW COMBINATION VACUUM & BOILER FEED PUMP. RECONNECT EXISTING CONDENSATE PIPING. MODIFY PIPING AS NECESSARY FOR RECONNECTION.



KEY PLAN  
SCALE: NTS



ARCHITECTURE • ENGINEERING • PLANNING

50 FRONT STREET, SUITE 202  
NEWBURGH, NEW YORK 12550  
TEL (800) 274-9000

REVISIONS	NO.	DATE	BY	DESCRIPTION

POUGHKEEPSIE CITY SCHOOL DISTRICT  
2020 CAPITAL IMPROVEMENT PROJECT  
PHASE 1B: BUILDING IMPROVEMENTS

- POUGHKEEPSIE HIGH SCHOOL: SED# 13-15-0001-0-007-018
- POUGHKEEPSIE MIDDLE SCHOOL: SED# 13-15-0001-0-001-5-021
- POUGHKEEPSIE ELEMENTARY SCHOOL: SED# 13-15-0001-0-004-0-14
- WARRING ELEMENTARY SCHOOL: SED# 13-15-0001-0-002-0-14
- WARRING ELEMENTARY SCHOOL: SED# 13-15-0001-0-005-0-13
- WARRING ELEMENTARY SCHOOL: SED# 13-15-0001-0-006-0-14
- WARRING ELEMENTARY SCHOOL: SED# 13-15-0001-0-007-0-14
- WARRING ELEMENTARY SCHOOL: SED# 13-15-0001-0-008-0-14
- WARRING ELEMENTARY SCHOOL: SED# 13-15-0001-0-009-0-14
- WARRING ELEMENTARY SCHOOL: SED# 13-15-0001-0-010-0-14
- WARRING ELEMENTARY SCHOOL: SED# 13-15-0001-0-011-0-14
- WARRING ELEMENTARY SCHOOL: SED# 13-15-0001-0-012-0-14
- WARRING ELEMENTARY SCHOOL: SED# 13-15-0001-0-013-0-14
- WARRING ELEMENTARY SCHOOL: SED# 13-15-0001-0-014-0-14

DATE	DRAWN	CHECKED
10/20/2021	BEF	AJS

SCALE: 1/4" = 1'-0"

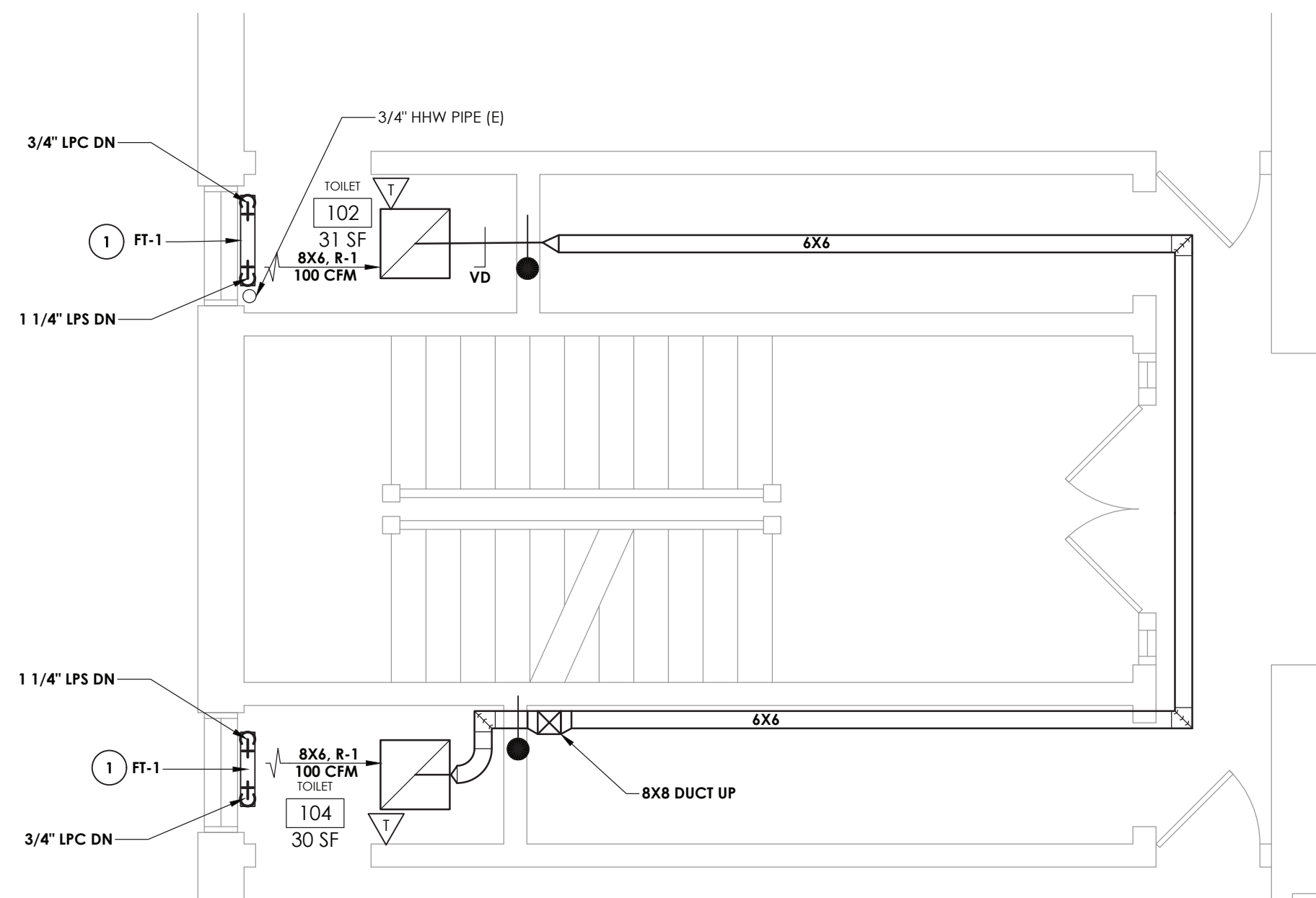
SHEET TITLE

SMITH ELEMENTARY  
SCHOOL BOILER  
NEW WORK PLANS

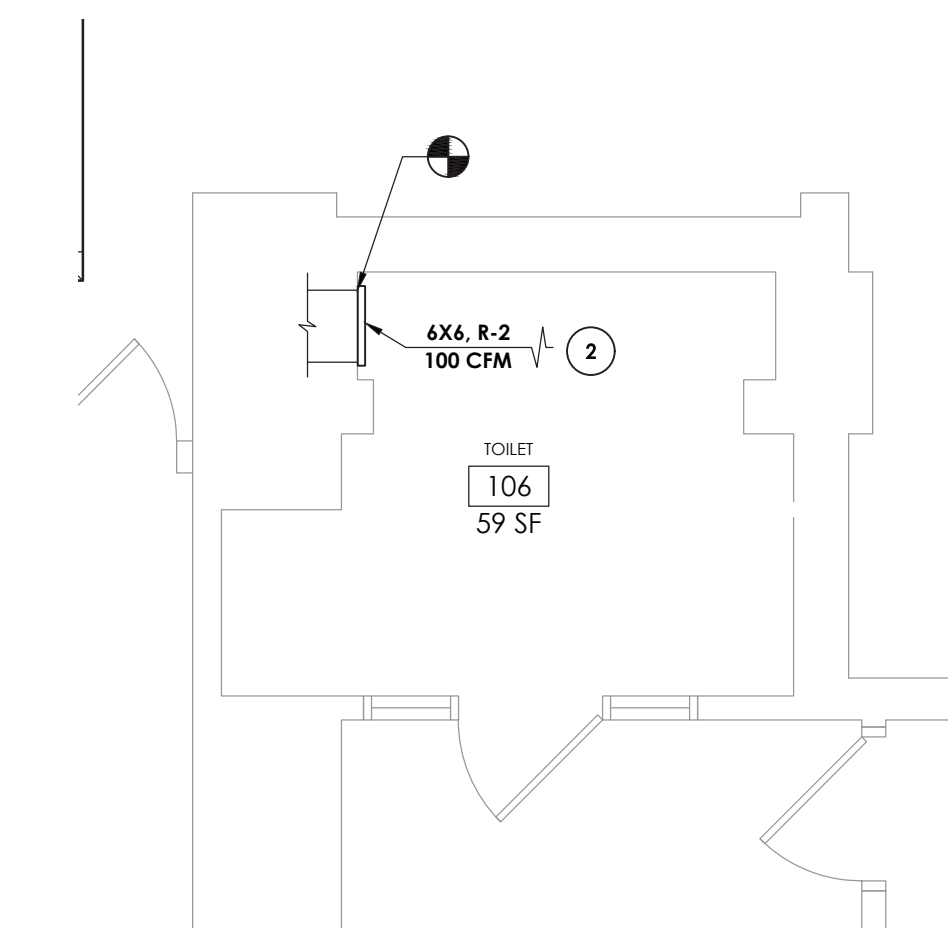
PROJECT NUMBER  
14078.09

ELC  
H200B

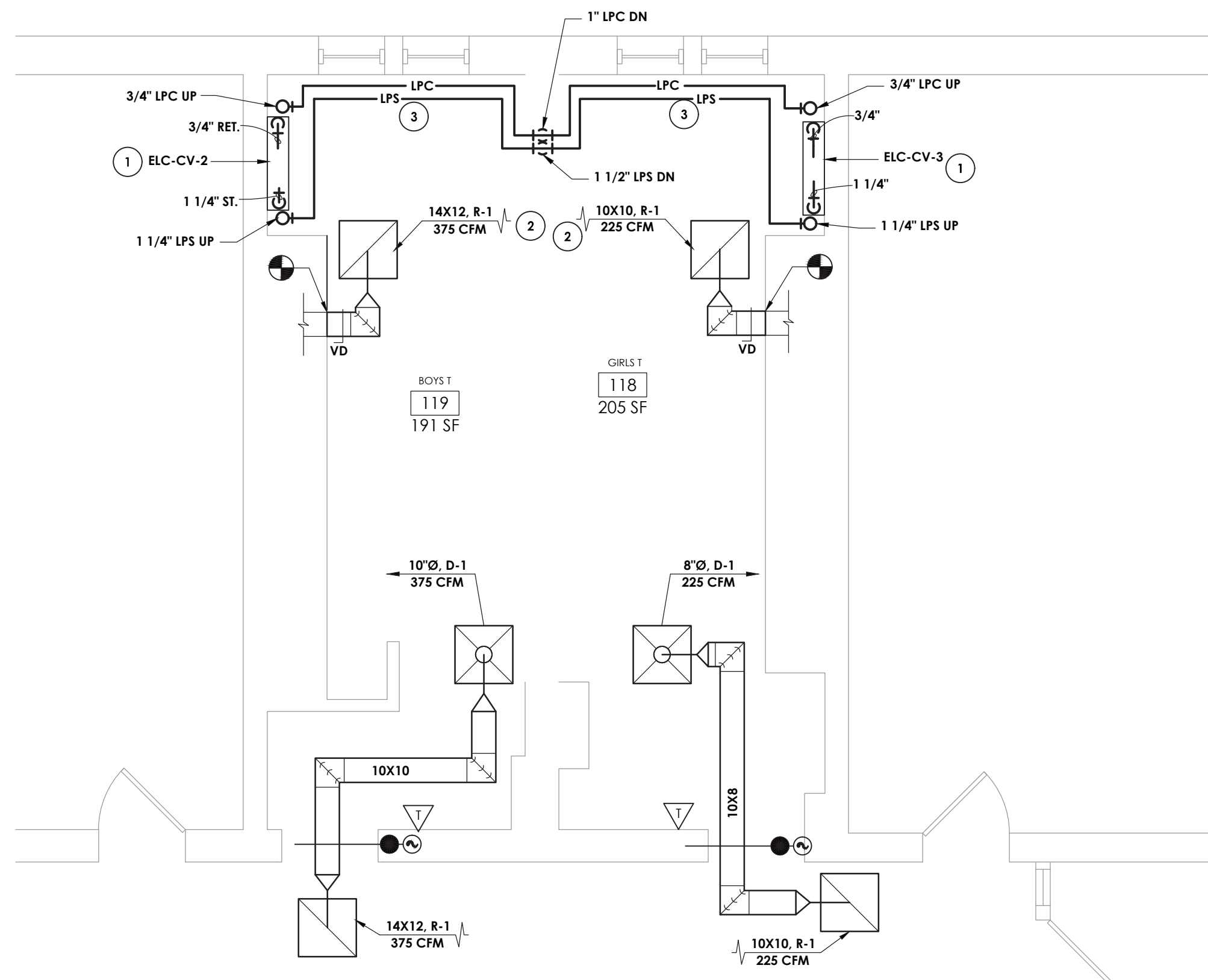
DRAWING NUMBER



**1** **TOILET ROOM 3 NEW WORK PLAN**  
H201 SCALE: 1/4" = 1'-0"



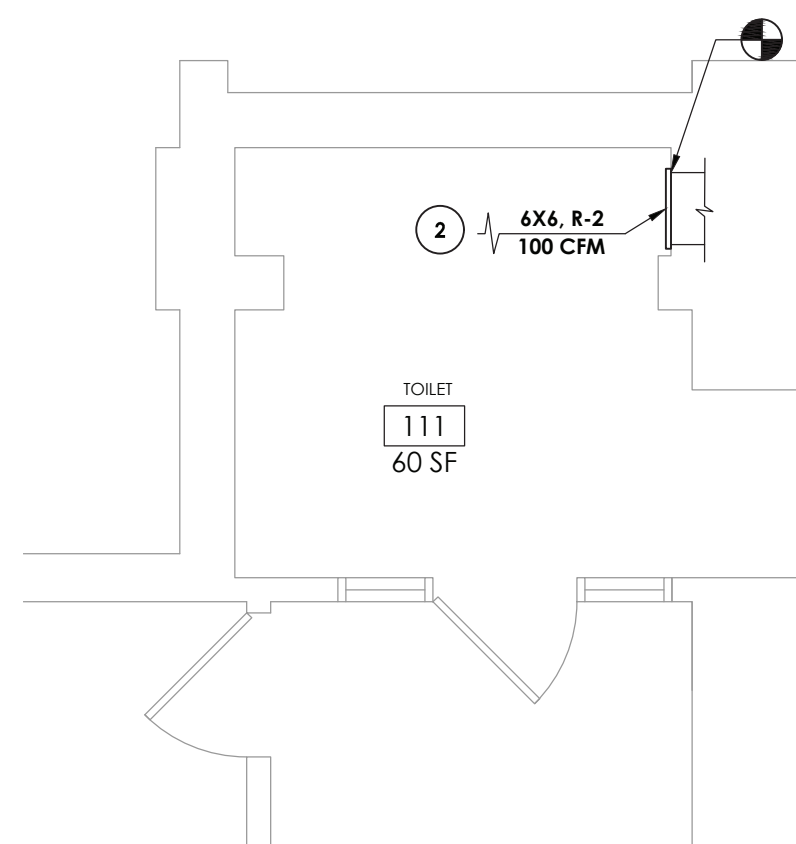
**3 TOILET ROOM 4 NEW WORK PLAN**  
H201 SCALE: 1/4" = 1'-0"



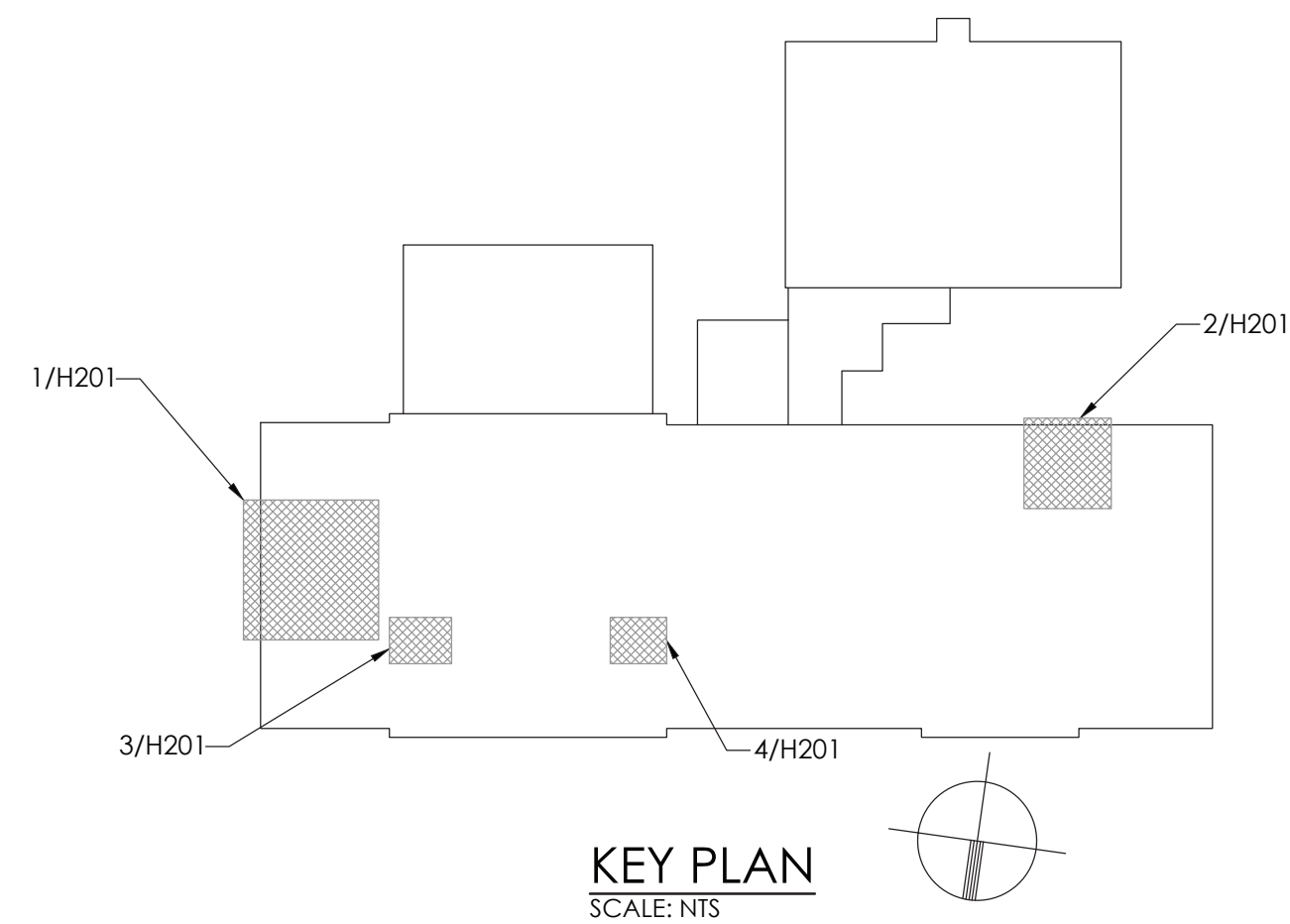
2  
H201

**TOILET ROOM 6 NEW WORK PLAN**

SCALE: 1/4" = 1'-0"



**4 TOILET ROOM 5 NEW WORK PLAN**  
H201 SCALE: 1/4" = 1'-0"



GENERAL NOTE:

1. ALL CONTROLS WORK SHALL BE PERFORMED BY TECHNICAL  
BUILDING SERVICES, INC.  
CONTACT: ED ROCKSTROH  
(P): (518) 885-4444  
(E): edrockstroh@tbscontrols.com

**KEY NOTES:**

- 1 CONTRACTOR SHALL PROVIDE NEW WALL MOUNTED CONVECTORS INCLUDING, CONTROL VALVES, CONTROLS AND THERMOSTAT. SEE SCHEDULE.
- 2 PROVIDE NEW GRILLE. RECONNECT TO EXISTING DUCTWORK. MODIFY DUCTWORK AS NECESSARY FOR RECONNECTION.
- 3 BRANCH OUT ABOVE FINISHED CEILING TO NEXT FLOOR.



**CPLteam.com**  
ARCHITECTURE ■ ENGINEERING ■ PLANNING

50 FRONT STREET, SUITE 202  
NEWBURGH, NEW YORK 12550  
TEL (800) 274-9000

REVISIONS		
NO.	DATE	BY DESCRIPTION

**POUGHKEEPSIE CITY SCHOOL DISTRICT**  
**2020 CAPITAL IMPROVEMENT PROJECT**  
**PHASE 1B: BUILDING IMPROVEMENTS**

- ☐ POUGHKEEPSIE HIGH SCHOOL: SED# 13-15-00-01-0-007-018  
☐ POUGHKEEPSIE MIDDLE SCHOOL: SED# 13-15-00-01-0-015-021  
☐ CLINTON ELEMENTARY SCHOOL: SED# 13-15-00-01-0-004-014  
☐ KRIEGER ELEMENTARY SCHOOL: SED# 13-15-00-01-0-006-014  
☐ MORSE ELEMENTARY SCHOOL: SED# 13-15-00-01-0-002-014  
☐ WARRING ELEMENTARY SCHOOL: SED# 13-15-00-01-0-005-013  
☐ SMITH EARLY LEARNING CENTER: SED# 13-15-00-01-0-008-022  
☐ COLUMBIUS ELEMENTARY SCHOOL: SED# 13-15-00-01-0-009-022

DATE 10/20/2021	DRAWN BEF	CHECKED AJS
--------------------	--------------	----------------

SCALE 1/4" = 1'-0"

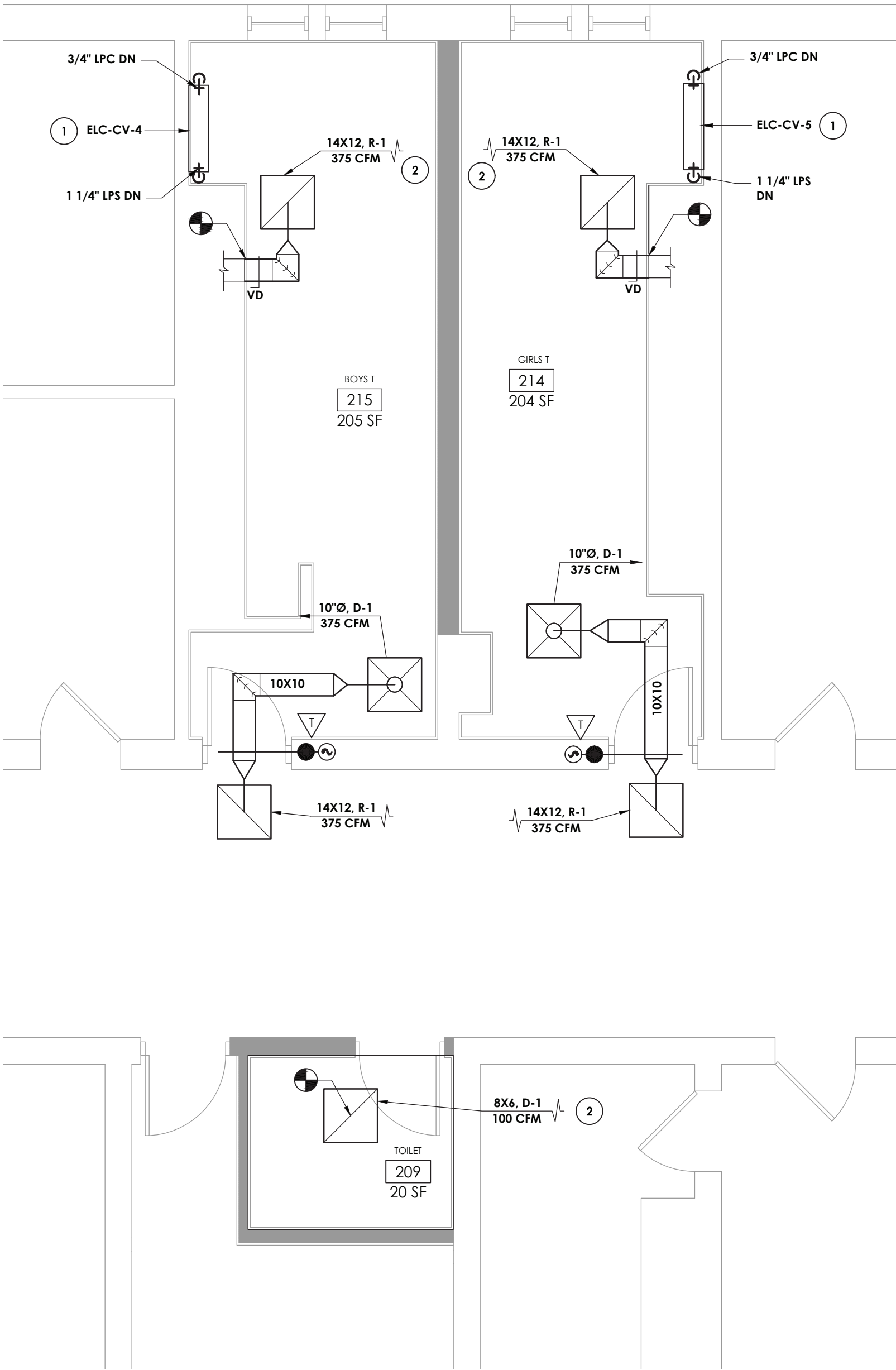
SHEET TITLE  
SMITH ELEMENTARY  
SCHOOL FIRST FLOOR  
TOILET ROOM  
NEW WORK PLANS

PROJECT NUMBER  
14078.09

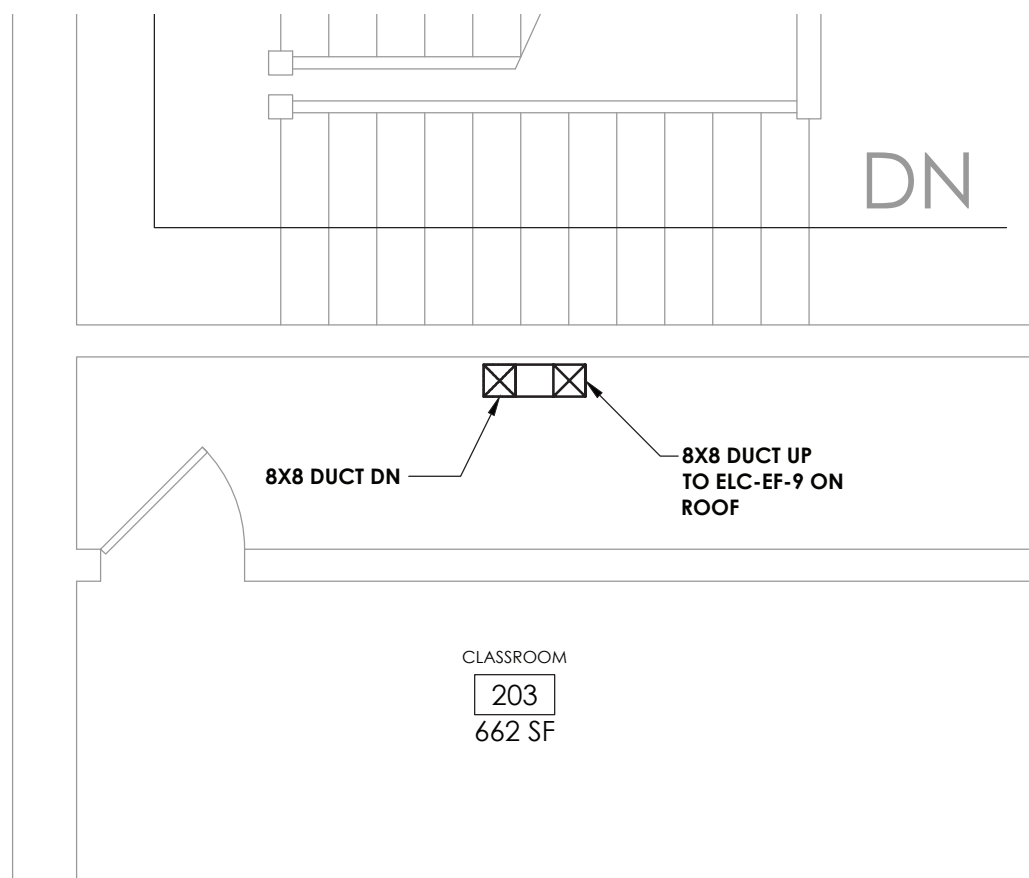
ELC  
H201

DRAWING NUMBER

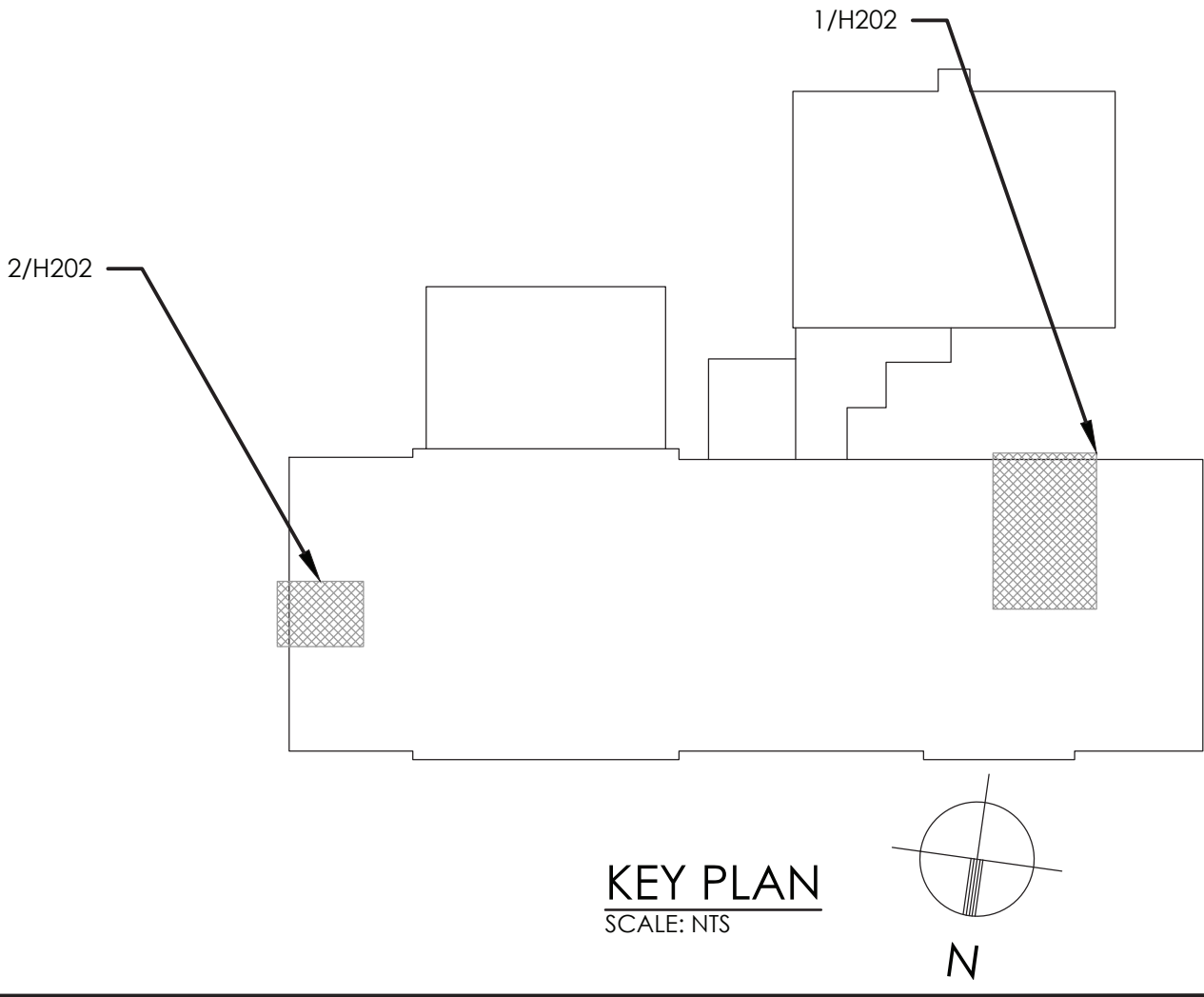




1  
H202  
TOILET ROOM NEW WORK PLAN  
SCALE: 1/4" = 1'-0"



2  
H202  
SECOND FLOOR NEW WORK PLAN  
SCALE: 1/4" = 1'-0"



GENERAL NOTE:

1. ALL CONTROLS WORK SHALL BE PERFORMED BY TECHNICAL BUILDING SERVICES, INC.  
CONTACT: ED ROCKSTROH  
(P): (518) 885-4444  
(E): edrockstroh@tbscontrols.com

KEY NOTES:

1. CONTRACTOR SHALL PROVIDE NEW WALL MOUNTED CONVECTORS INCLUDING, CONTROL VALVES, CONTROLS AND THERMOSTAT. SEE SCHEDULE.
2. PROVIDE NEW GRILLE. RECONNECT TO EXISTING DUCTWORK. MODIFY DUCTWORK AS NECESSARY FOR RECONNECTION.

**CPL**  
CPLteam.com  
ARCHITECTURE • ENGINEERING • PLANNING  
50 FRONT STREET, SUITE 202  
NEWBURGH, NEW YORK 12550  
TEL (800) 274-9000

REVISIONS	DESCRIPTION	
	NO.	DATE



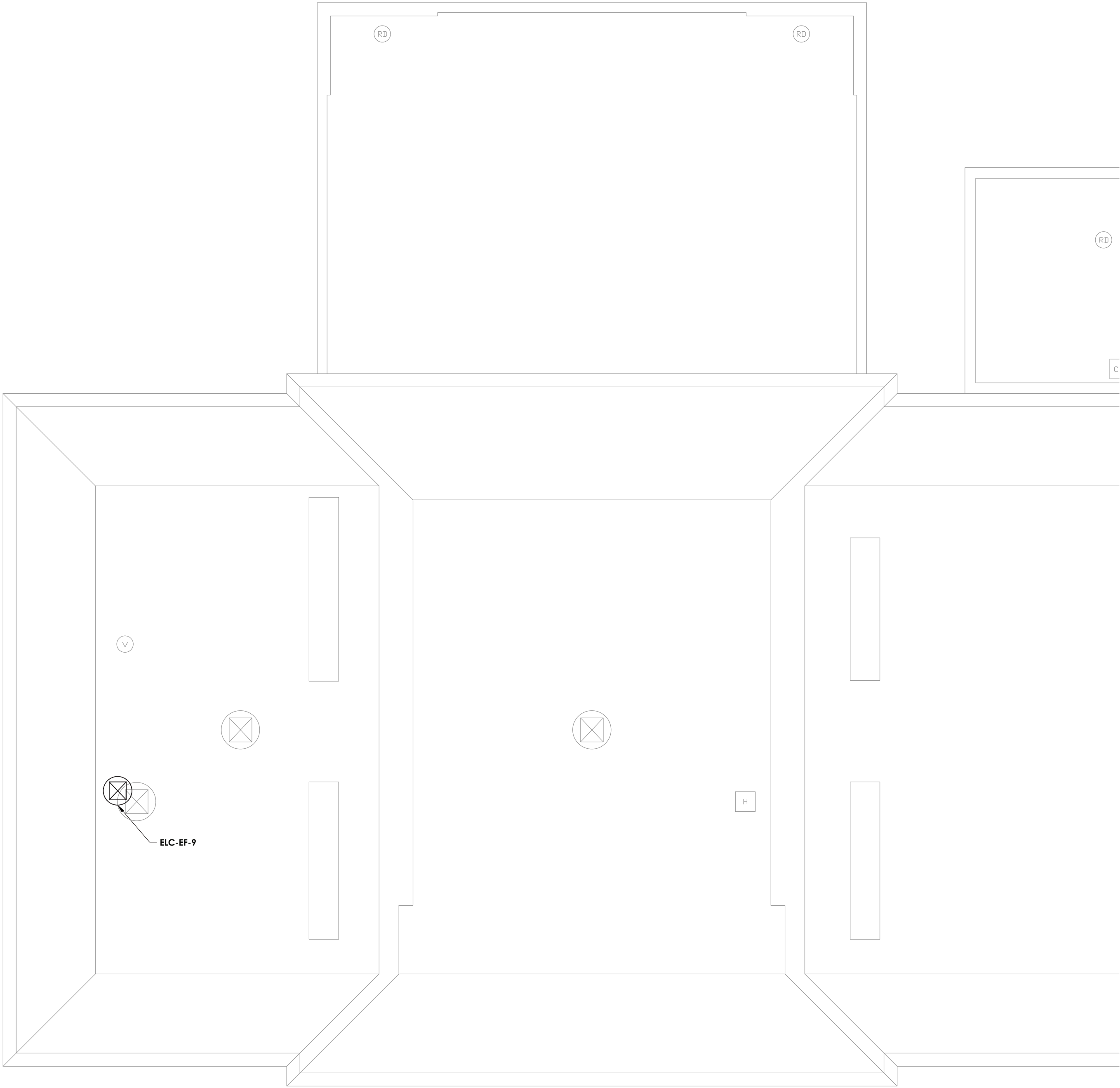
POUGHKEEPSIE CITY SCHOOL DISTRICT  
2020 CAPITAL IMPROVEMENT PROJECT  
PHASE 1B: BUILDING IMPROVEMENTS

- ☐ POUGHKEEPSIE HIGH SCHOOL: SED# 13-15-00-01-0-007-018
- ☐ POUGHKEEPSIE MIDDLE SCHOOL: SED# 13-15-00-01-0-008-021
- ☐ POUGHKEEPSIE ELEMENTARY SCHOOL: SED# 13-15-00-01-0-009-014
- ☐ KREGER ELEMENTARY SCHOOL: SED# 13-15-00-01-0-004-014
- ☐ MORSE ELEMENTARY SCHOOL: SED# 13-15-00-01-0-002-014
- ☐ WARRING ELEMENTARY SCHOOL: SED# 13-15-00-01-0-005-013
- ☐ WARRING ELEMENTARY SCHOOL: SED# 13-15-00-01-0-006-014
- ☐ COLUMBIUS ELEMENTARY SCHOOL: SED# 13-15-00-01-0-001-014

DATE	DRAWN	CHECKED
10/20/2021	BEF	AJS
SCALE: 1/4" = 1'-0"		
SHEET TITLE		
SMITH SCHOOL SECOND FLOOR TOILET ROOM NEW WORK PLANS		

PROJECT NUMBER  
14078.09  
ELC  
H202  
DRAWING NUMBER





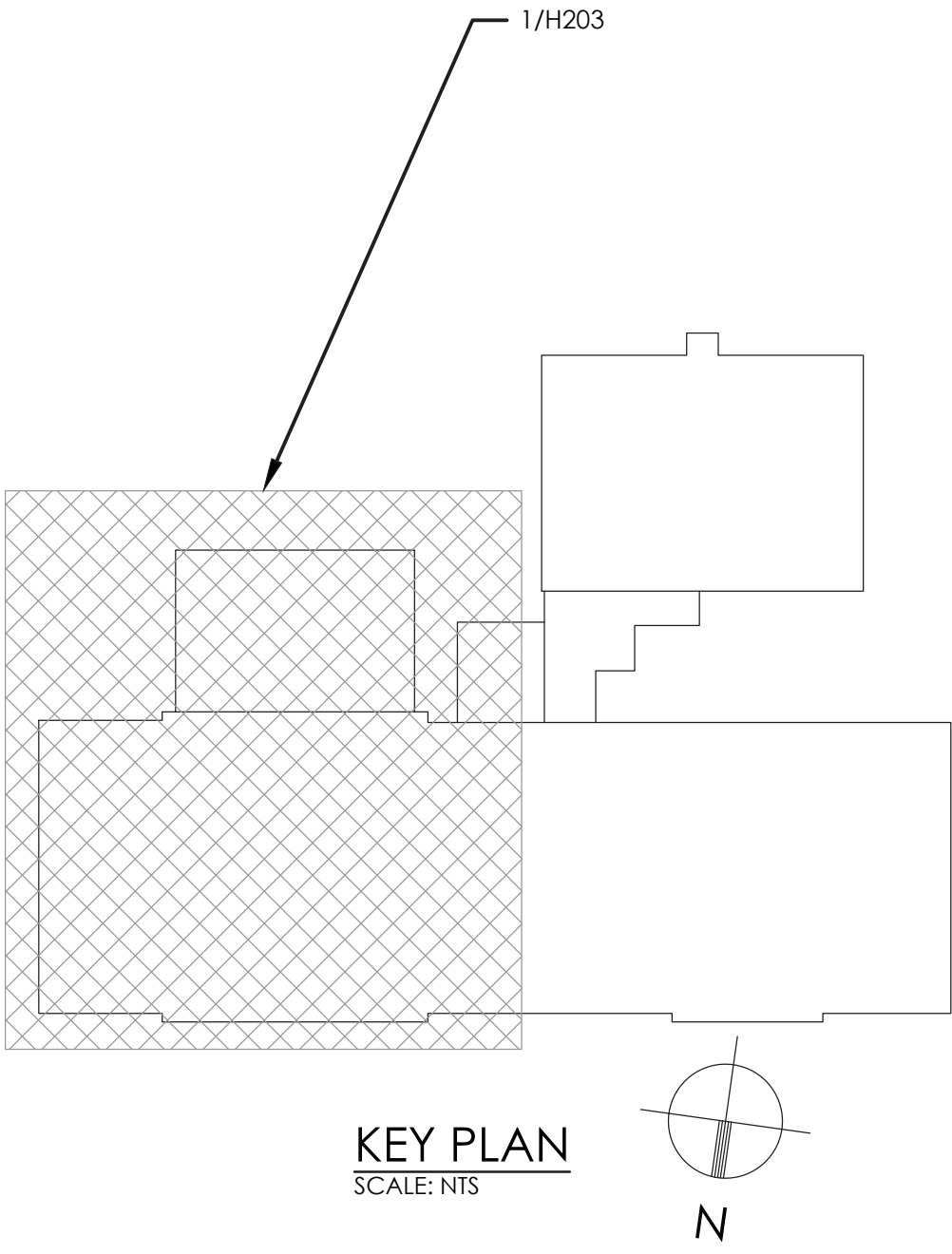
1 ROOF NEW PLAN  
H203      SCALE: 1/8" = 1'-0"

**GENERAL NOTE:**

1. ALL CONTROLS WORK SHALL BE PERFORMED BY TECHNICAL BUILDING SERVICES, INC.  
CONTACT: ED ROCKSTROH  
(P): (518) 885-4444  
(E): edrockstroh@tbscontrols.com

**KEY NOTES:**

1 PROVIDE NEW EXHAUST FAN. M.C. TO PROVIDE AND MARK OUT LOCATION OF NEW CURB. COORDINATE CUTTING AND PATCHING WITH G.C.





**CPLteam.com**  
ARCHITECTURE • ENGINEERING • PLANNING

50 FRONT STREET, SUITE 202  
NEWBURGH, NEW YORK 12550  
TEL (800) 274-9000

REVISIONS		DESCRIPTION	
NO.	DATE	BY	DESCRIPTION



POUGHKEEPSIE CITY SCHOOL DISTRICT  
2020 CAPITAL IMPROVEMENT PROJECT  
PHASE 1B: BUILDING IMPROVEMENTS

- POUGHKEEPSIE HIGH SCHOOL: SED# 13-15-00-01-0-007-018
- POUGHKEEPSIE MIDDLE SCHOOL: SED# 13-15-00-01-0-008-021
- POUGHKEEPSIE JUNIOR HIGH SCHOOL: SED# 13-15-00-01-0-009-014
- KRUEGER ELEMENTARY SCHOOL: SED# 13-15-00-01-0-004-014
- WARRING ELEMENTARY SCHOOL: SED# 13-15-00-01-0-002-014
- WARRING ELEMENTARY SCHOOL: SED# 13-15-00-01-0-005-013
- WARRING ELEMENTARY SCHOOL: SED# 13-15-00-01-0-006-014
- WARRING ELEMENTARY SCHOOL: SED# 13-15-00-01-0-001-014

DATE	DRAWN	CHECKED
10/20/2021	BEF	AJS
SCALE: 1/4" = 1'-0"		
SHEET TITLE		
SMITH SCHOOL ROOF NEW WORK PLAN		

PROJECT NUMBER

14078.09

ELC  
H203

DRAWING NUMBER