



- 1 REMOVE EXISTING GRILLE AND EXHAUST DUCTWORK. PREPARE FOR NEW WORK.
- 2 REMOVE EXISTING RADIATOR IN ITS ENTIRETY INCLUDING COVER, CONTROLS, AND PIPING BACK TO MAIN COORDINATE WALL DEMO WITH G.C. PREPARE FOR NEW WORK.
- 3 REMOVE EXISTING CONVECTOR IN ITS ENTIRETY INCLUDING COVER, CONTROLS, AND PIPING BACK TO MAIN. PREPARE FOR NEW WORK.
- 4 REMOVE EXISTING GRILLE AND DISCONNECT FROM EXISTING DUCTWORK. PREPARE FOR NEW WORK.

[illegible]

POUGHKEEPSIE CITY SCHOOL DISTRICT
2020 CAPITAL IMPROVEMENT PROJECT
PHASE 1B: BUILDING IMPROVEMENTS

- ☐ POUGHKEEPSIE HIGH SCHOOL: SED# 131-15-0001-0-0007-18
- ☐ POUGHKEEPSIE MIDDLE SCHOOL: SED# 131-15-0001-0-001-021
- ☐ CLINTON ELEMENTARY SCHOOL: SED# 131-15-0001-0-0004-014
- ☐ CLINTON ELEMENTARY SCHOOL: SED# 131-15-0001-0-0004-014
- ☐ MORSE ELEMENTARY SCHOOL: SED# 131-15-0001-0-0002-014
- ☐ WARRING ELEMENTARY SCHOOL: SED# 131-15-0001-0-0005-013
- ☐ SMITH EARLY LEARNING CENTER: SED# 131-15-0001-0-0008-022

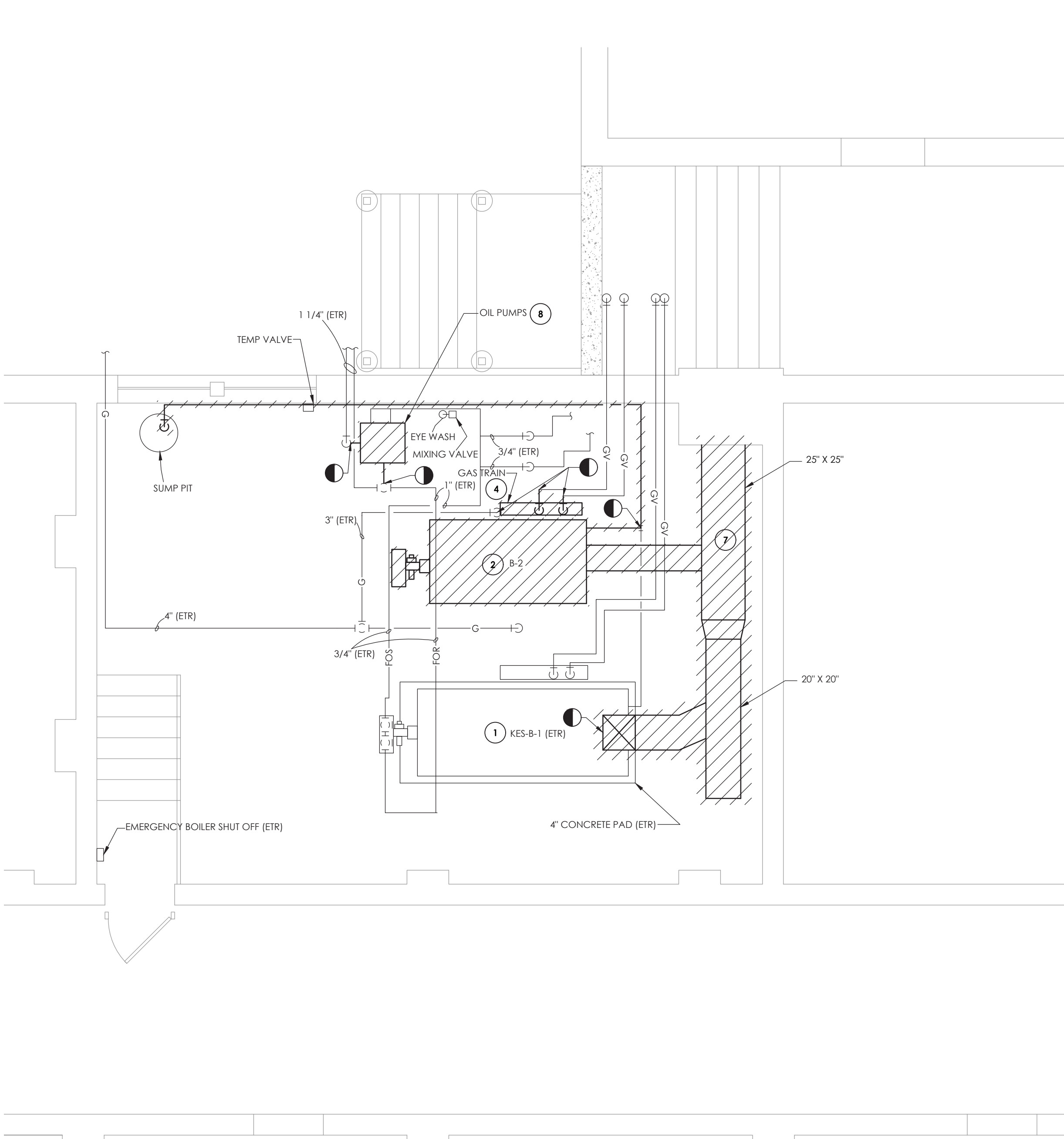
DATE 10/20/2021	DRAWN BEF	CHECKED AJS
SCALE 1/8" = 1'-0"		
SHEET TITLE KREIGER ELEMENTARY FIRST FLOOR TOILET ROOM DEMOLITION PLANS		

PROJECT NUMBER
14078.09
KES
H101A
DRAWING NUMBER

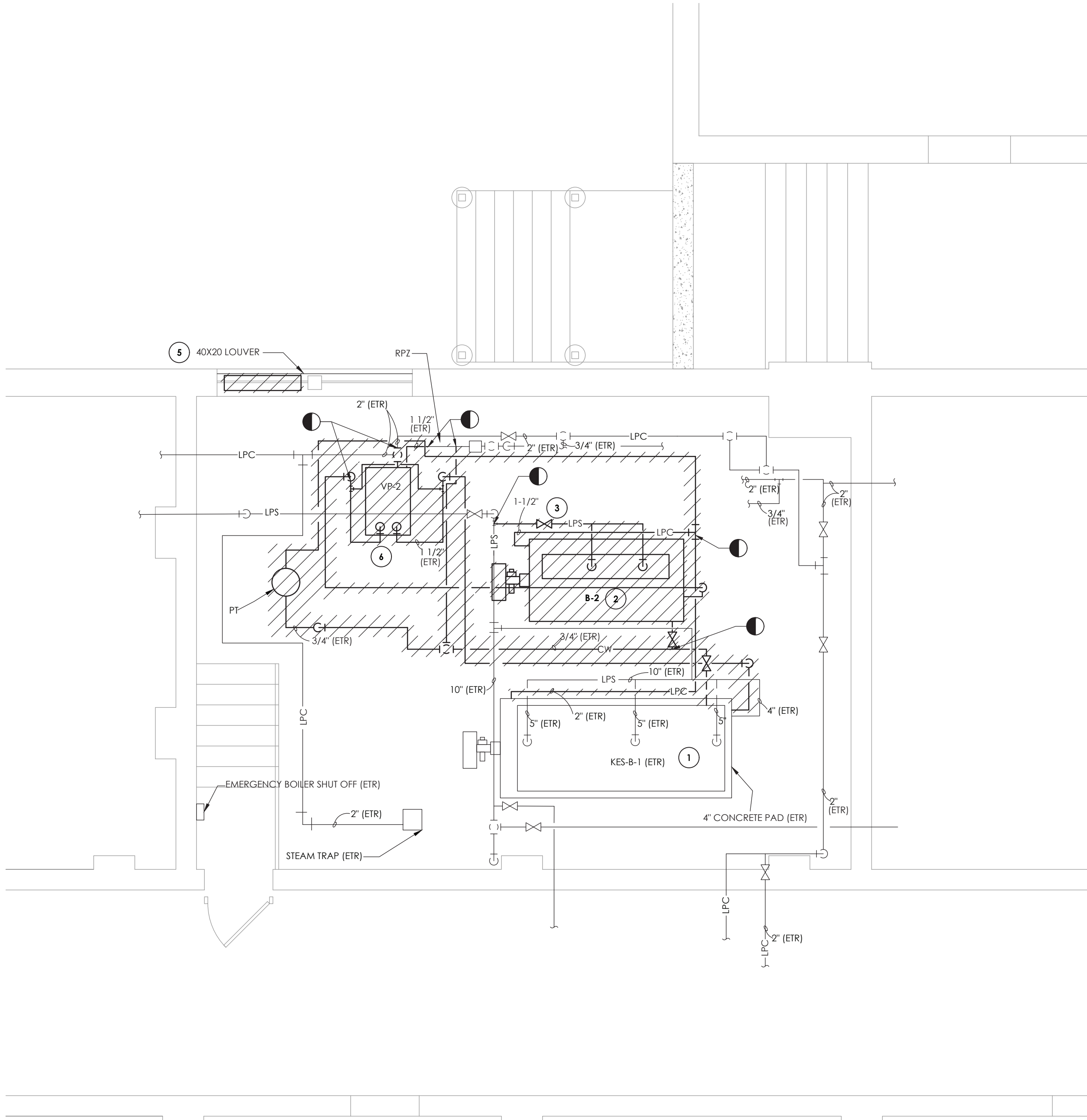


CPLteam.com
ARCHITECTURE ■ ENGINEERING ■ PLANNING

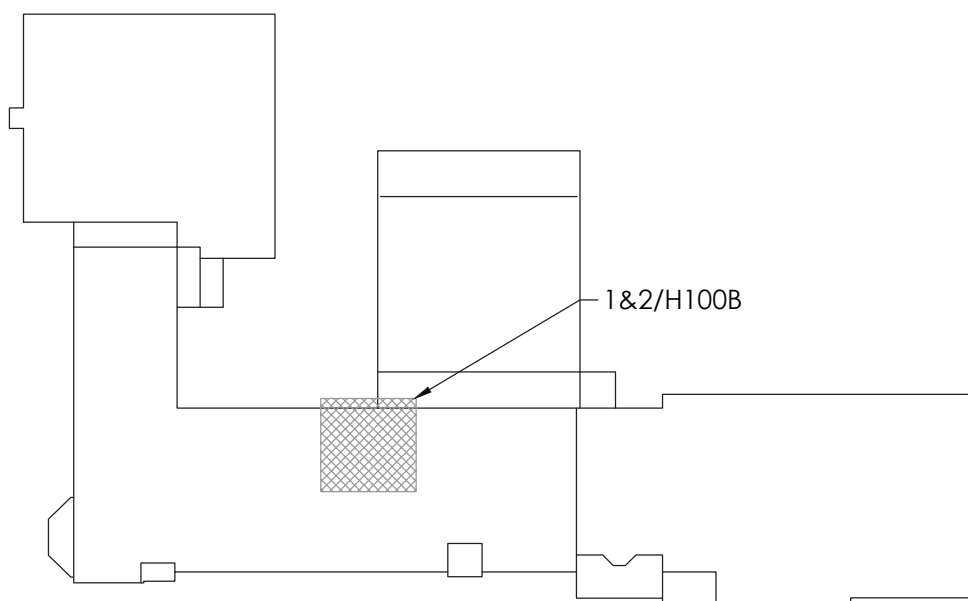
50 FRONT STREET, SUITE 202
NEWBURGH, NEW YORK 12550
TEL (800) 274-9000



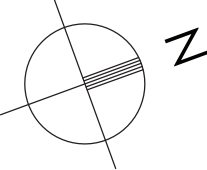
1 OIL, FLUE, DOMESTIC WATER AND NATURAL GAS DEMOLITION PLAN
H101B SCALE: 1/4" = 1'-0"



2 DOMESTIC WATER, CONDENSATE RETURN AND STEAM SUPPLY DEMOLITION PLAN
H101B SCALE: 1/4" = 1'-0"



KEY PLAN
SCALE: NTS



GENERAL NOTES:

1. FIELD VERIFY EXACT DUCT AND PIPING LOCATIONS AND SIZES PRIOR TO DEMOLITION AND COORDINATE SPECIFIC POINTS OF REMOVAL LOCATIONS BASED ON NEW UNIT DIMENSIONS AND CONFIGURATIONS.
2. CONTRACTOR SHALL CLEAN AND INSPECT EXISTING CHIMNEY IN ACCORDANCE WITH 2020 IMC SECTION 801.18.

KEY NOTES:

1. EXISTING WEIL MCCLAIN 1488 BOILER AND POWER FLAME WCR3-GO-25B TO REMAIN.
2. REMOVE EXISTING BOILER IN ITS ENTIRETY INCLUDING BURNER. DISCONNECT STEAM SUPPLY, CONDENSATE RETURN FOS & R, GAS LINES TO POINTS INDICATED, AND GAS TRAIN. PREPARE FOR NEW WORK.
3. REMOVE AND PREPARE NEW WORK FOR STEAM ISOLATION VALVE.
4. COORDINATE SCHEDULING ALL WORK WITH THE OWNER TO ISOLATE AND PREPARE FUEL GAS PIPING FOR THE DEMOLITION WORK. DISCONNECT AND REMOVE PIPING AS SHOWN. PREPARE REMAINING PIPING FOR NEW WORK.
5. REMOVE EXISTING WALL LOUVER AND PREPARE OPENING FOR NEW WORK.
6. DISCONNECT AND REMOVE COMPLETELY THE EXISTING VACUUM PUMP. DISCONNECT THE CONDENSATE LINES TO POINT INDICATED AND PREPARE FOR NEW WORK.
7. REMOVE EXISTING FLUE, STACK AND BREECHING IN ITS ENTIRETY INCLUDING FOR EXISTING TO REMAIN KES-B-1. PREPARE FOR NEW WORK.
8. DISCONNECT AND REMOVE EXISTING FUEL OIL PUMPS. REMOVE EXISTING FUEL OIL SUPPLY AND RETURN LINES TO POINTS INDICATED. PREPARE FOR NEW WORK.



CPLteam.com
ARCHITECTURE • ENGINEERING • PLANNING

50 FRONT STREET, SUITE 202
NEWBURGH, NEW YORK 12550
TEL (800) 274-9000

REVISIONS	DESCRIPTION		BY	DATE
	NO.			



POUGHKEEPSIE CITY SCHOOL DISTRICT
2020 CAPITAL IMPROVEMENT PROJECT
PHASE 1B: BUILDING IMPROVEMENTS

- ☐ POUGHKEEPSIE HIGH SCHOOL: SED# 13-15-0001-0-007-018
- ☐ POUGHKEEPSIE MIDDLE SCHOOL: SED# 13-15-0001-0-001-5-021
- ☐ POUGHKEEPSIE ELEMENTARY SCHOOL: SED# 13-15-0001-0-004-014
- ☐ KREIGER ELEMENTARY SCHOOL: SED# 13-15-0001-0-004-014
- ☐ MORSE ELEMENTARY SCHOOL: SED# 13-15-0001-0-002-014
- ☐ WARRING ELEMENTARY SCHOOL: SED# 13-15-0001-0-005-013
- ☐ WARRING ELEMENTARY SCHOOL: SED# 13-15-0001-0-005-013
- ☐ COLUMBUS ELEMENTARY SCHOOL: SED# 13-15-0001-0-001-014

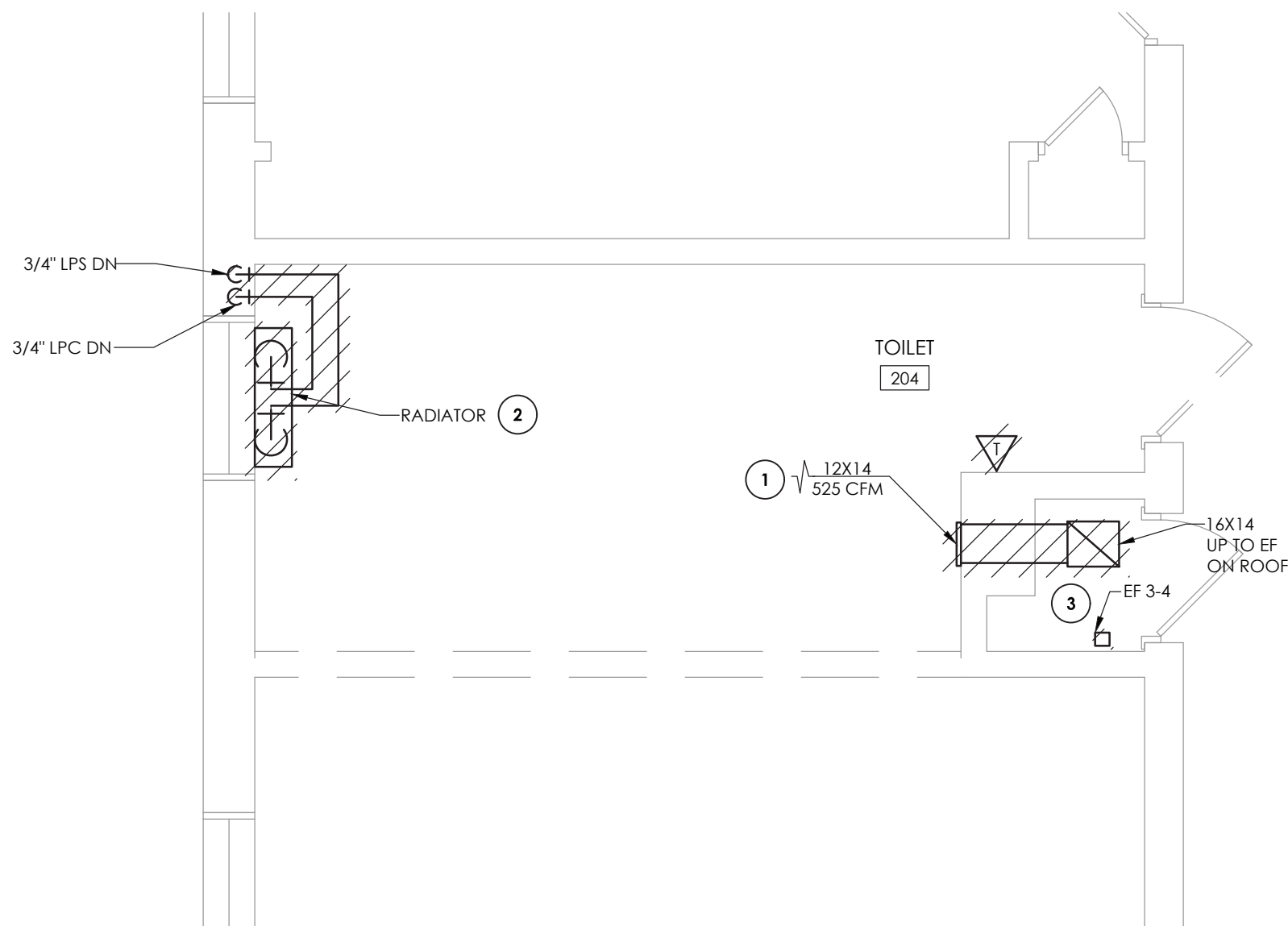
DATE	DRAWN	CHECKED
10/20/2021	BEF	AJS
SCALE: 1/4" = 1'-0"		
SHEET TITLE		
KREIGER ELEMENTARY BOILER ROOM DEMOLITION PLANS		

PROJECT NUMBER

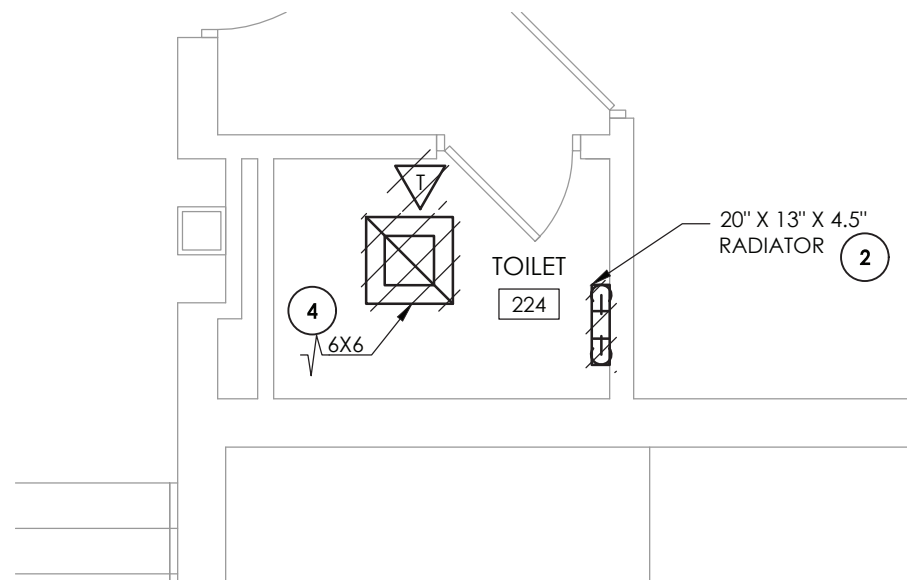
14078.09

KES
H101B

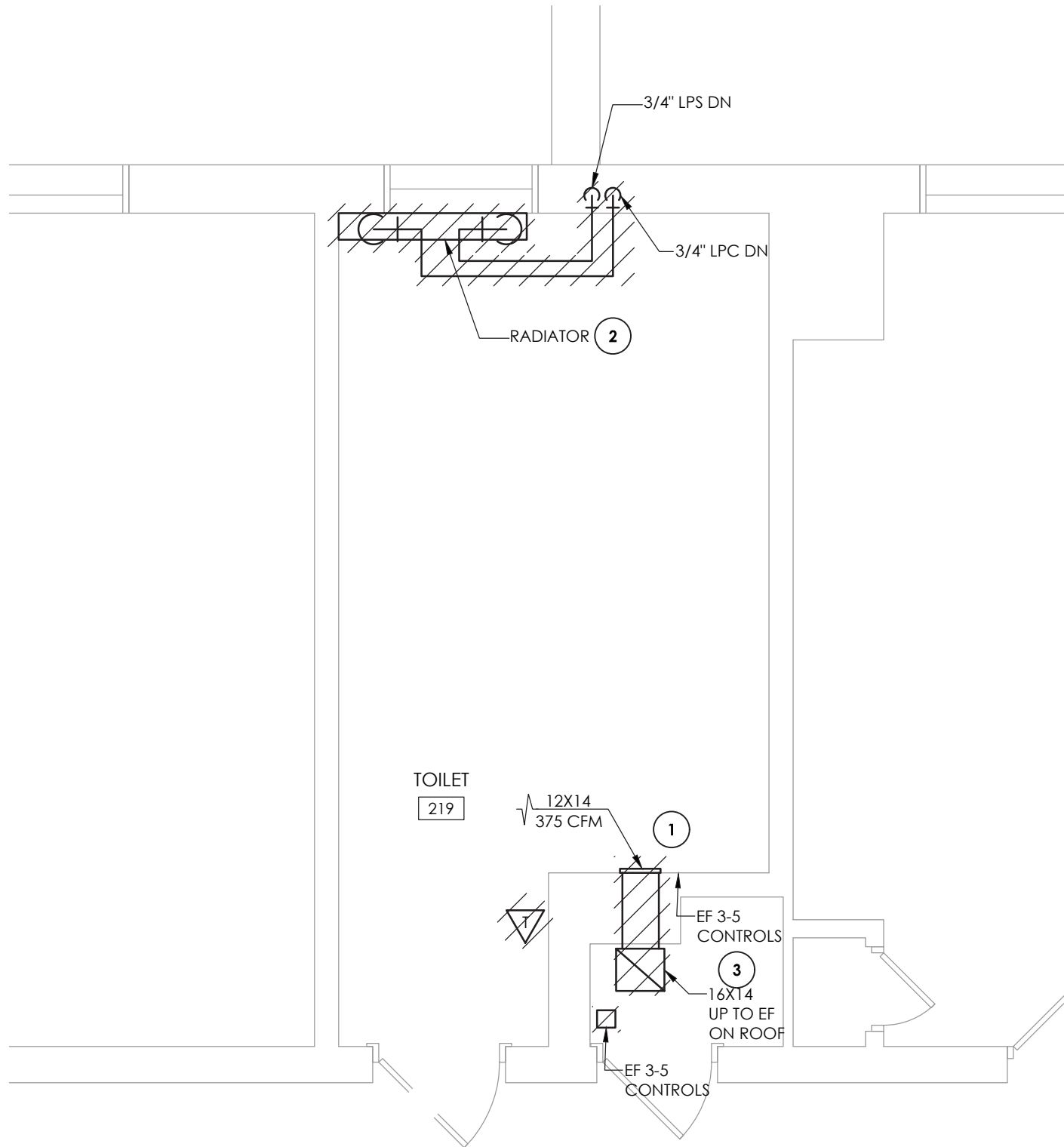
DRAWING NUMBER



1
H102
TOILET ROOM 204 DEMOLITION
SCALE: 1/4" = 1'-0"



3
H102
TOILET ROOM 224 DEMOLITION
SCALE: 1/4" = 1'-0"



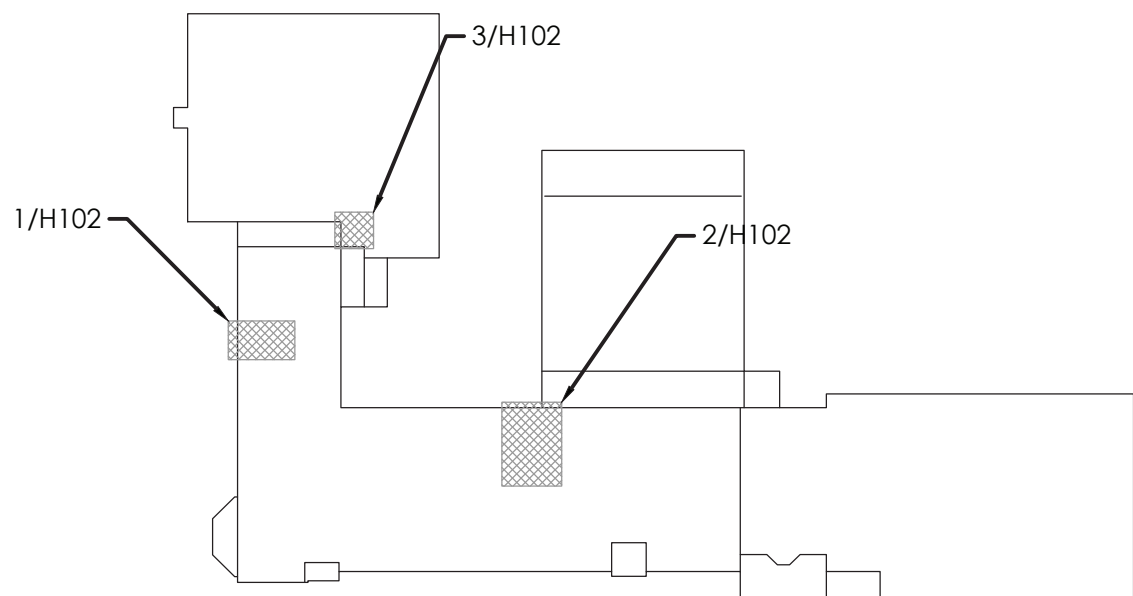
2
H102
TOILET ROOM 219 DEMOLITION
SCALE: 1/4" = 1'-0"

GENERAL NOTES:

1. FIELD VERIFY EXACT DUCT AND PIPING LOCATIONS AND SIZES PRIOR TO DEMOLITION AND COORDINATE SPECIFIC POINTS OF REMOVAL LOCATIONS BASED ON NEW UNIT DIMENSIONS AND CONFIGURATIONS

KEY NOTES:

- 1 REMOVE EXISTING GRILLE AND EXHAUST DUCTWORK UP TO EXHAUST FAN ON ROOF ABOVE. PREPARE FOR NEW WORK.
- 2 REMOVE EXISTING RADIATOR IN ITS ENTIRETY INCLUDING COVER, CONTROLS, AND PIPING BACK TO MAIN COORDINATE WALL DEMO WITH G.C. PREPARE FOR NEW WORK.
- 3 REMOVE EXISTING EXHAUST FAN CONTROLS.
- 4 REMOVE EXISTING GRILLE AND DISCONNECT FROM EXISTING DUCTWORK. PREPARE FOR NEW WORK.



KEY PLAN
SCALE: NTS



CPLteam.com
ARCHITECTURE • ENGINEERING • PLANNING

50 FRONT STREET, SUITE 202
NEWBURGH, NEW YORK 12550
TEL (800) 274-9000

REVISIONS		NO.	DATE	BY	DESCRIPTION



POUGHKEEPSIE CITY SCHOOL DISTRICT
2020 CAPITAL IMPROVEMENT PROJECT
PHASE 1B: BUILDING IMPROVEMENTS

- ☐ POUGHKEEPSIE HIGH SCHOOL: SED# 13-15-00-01-0-007-018
- ☐ POUGHKEEPSIE MIDDLE SCHOOL: SED# 13-15-00-01-0-008-021
- ☐ POUGHKEEPSIE JUNIOR HIGH SCHOOL: SED# 13-15-00-01-0-009-014
- ☐ KREIGER ELEMENTARY SCHOOL: SED# 13-15-00-01-0-004-014
- ☐ MORSE ELEMENTARY SCHOOL: SED# 13-15-00-01-0-002-014
- ☐ WARRING ELEMENTARY SCHOOL: SED# 13-15-00-01-0-005-013
- ☐ COLCATHILL ELEMENTARY SCHOOL: SED# 13-15-00-01-0-001-014
- ☐ COLUMBIUS ELEMENTARY SCHOOL: SED# 13-15-00-01-0-003-014

DATE	DRAWN	CHECKED
10/20/2021	BEF	AJS
SCALE: 1/4" = 1'-0"		
SHEET TITLE		
KREIGER ELEMENTARY SECOND FLOOR TOILET ROOM DEMOLITION PLANS		

PROJECT NUMBER

14078.09

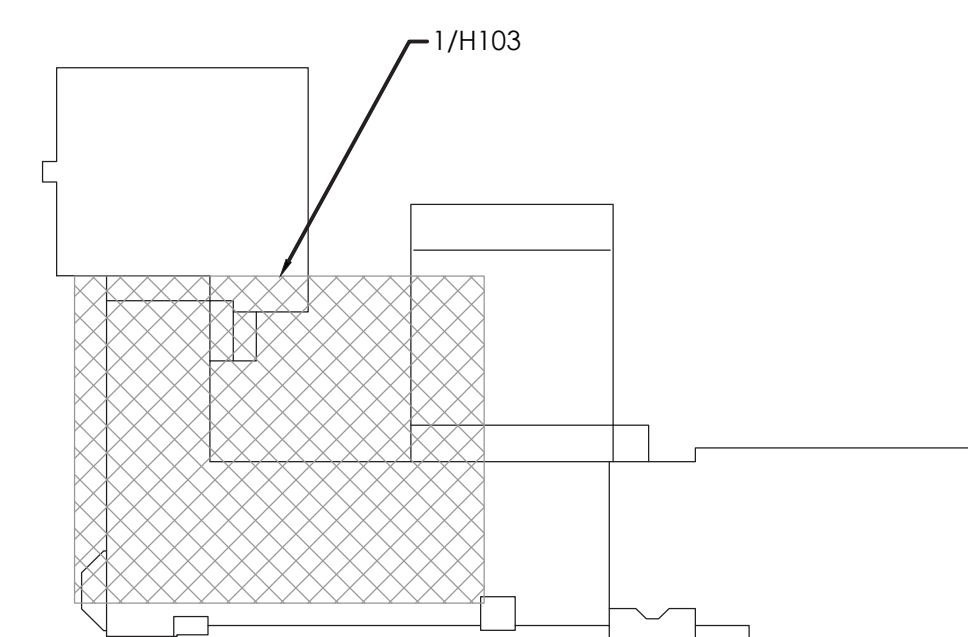
KES
H102

DRAWING NUMBER

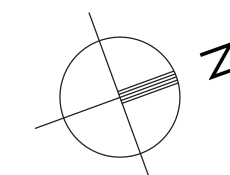
1
H103

ROOF DEMOLITION PLAN

SCALE: 1/8" = 1'-0"



KEY PLAN
SCALE: NTS



GENERAL NOTES:

1. FIELD VERIFY EXACT DUCT AND PIPING LOCATIONS AND SIZES PRIOR TO DEMOLITION AND COORDINATE SPECIFIC POINTS OF REMOVAL LOCATIONS BASED ON NEW UNIT DIMENSIONS AND CONFIGURATIONS

KEY NOTES:

- ① REMOVE EXISTING EXHAUST FAN IN ITS ENTIRETY INCLUDING CURB, CONTROLS, AND ALL ASSOCIATED DUCTWORK. PREPARE FOR NEW WORK.

REVISIONS			
NO.	DATE	BY	DESCRIPTION

**POUGHKEEPSIE CITY SCHOOL DISTRICT
2020 CAPITAL IMPROVEMENT PROJECT
PHASE 1B: BUILDING IMPROVEMENTS**

- ☐ POUGHKEEPSIE HIGH SCHOOL: SED# 13-15-00-01-0-0007-018
☐ POUGHKEEPSIE MIDDLE SCHOOL: SED# 13-15-00-01-0-015-021
☐ CLINTON ELEMENTARY SCHOOL: SED# 13-15-00-01-0-0004-014
☐ KRIFTER ELEMENTARY SCHOOL: SED# 13-15-00-01-0-0006-014
☐ MORSE ELEMENTARY SCHOOL: SED# 13-15-00-01-0-0002-014
☐ WARRING ELEMENTARY SCHOOL: SED# 13-15-00-01-0-0005-013
☐ SMITH EARLY LEARNING CENTER: SED# 13-15-00-01-0-0008-022

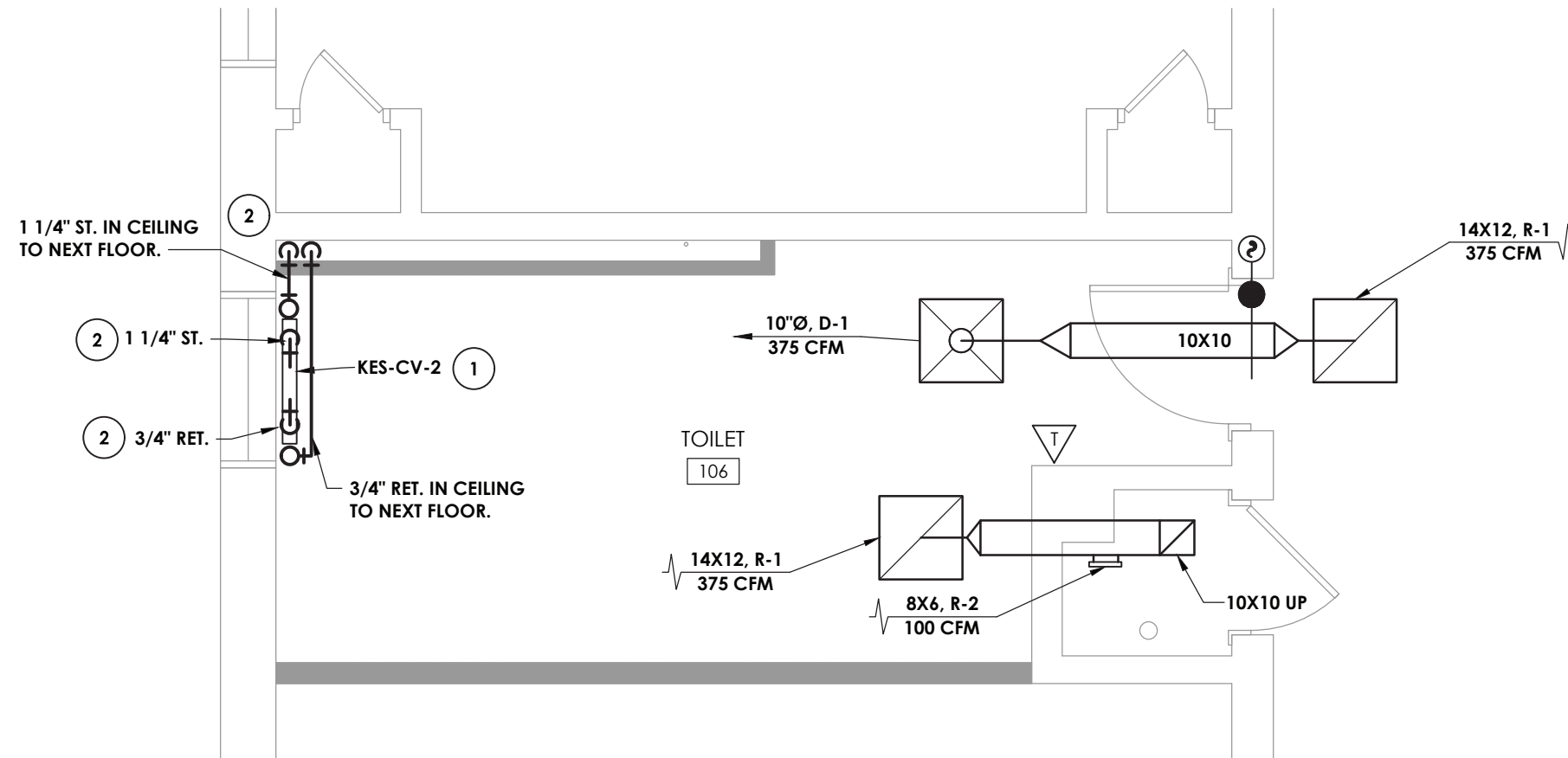
DATE	DRAWN	CHECKED
10/20/2021	BEF	AJS

SHEET TITLE
KREIGER ELEMENTARY
ROOF DEMOLITION
PLAN

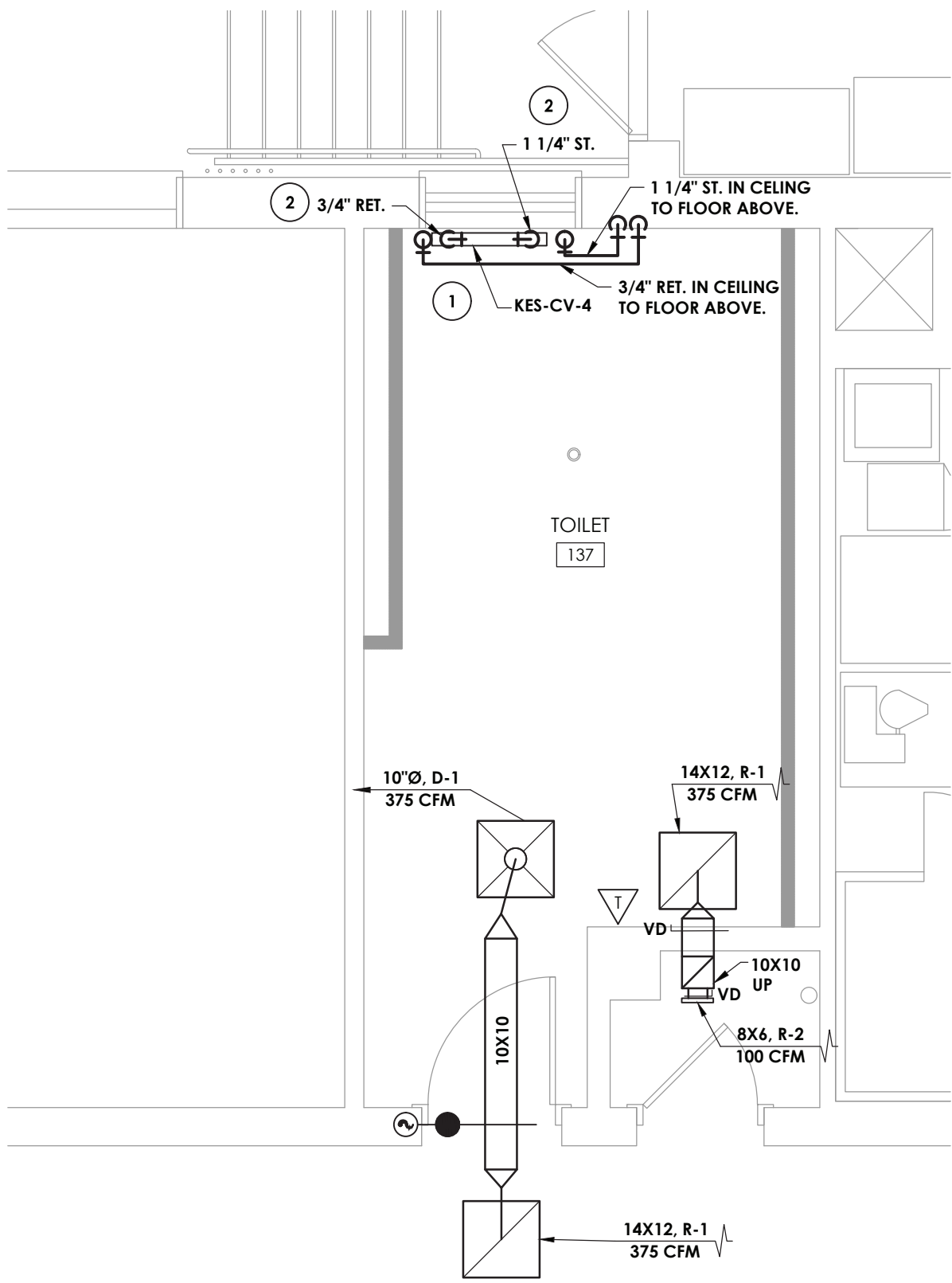
PROJECT NUMBER
14078.09

KES
H103

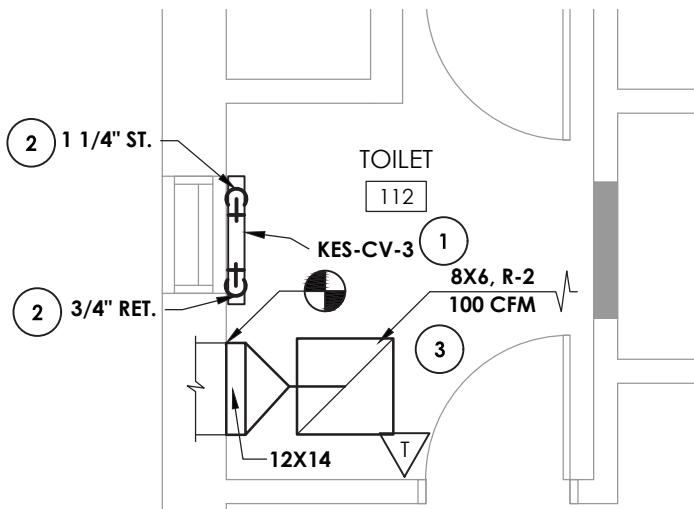
DRAWING NUMBER



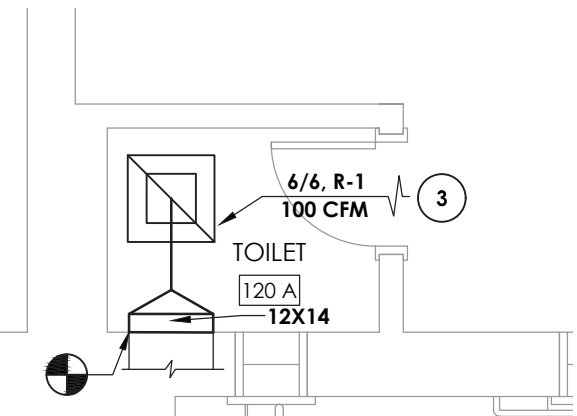
1
H201A
TOILET ROOM 106 NEW WORK PLANS
SCALE: 1/4" = 1'-0"



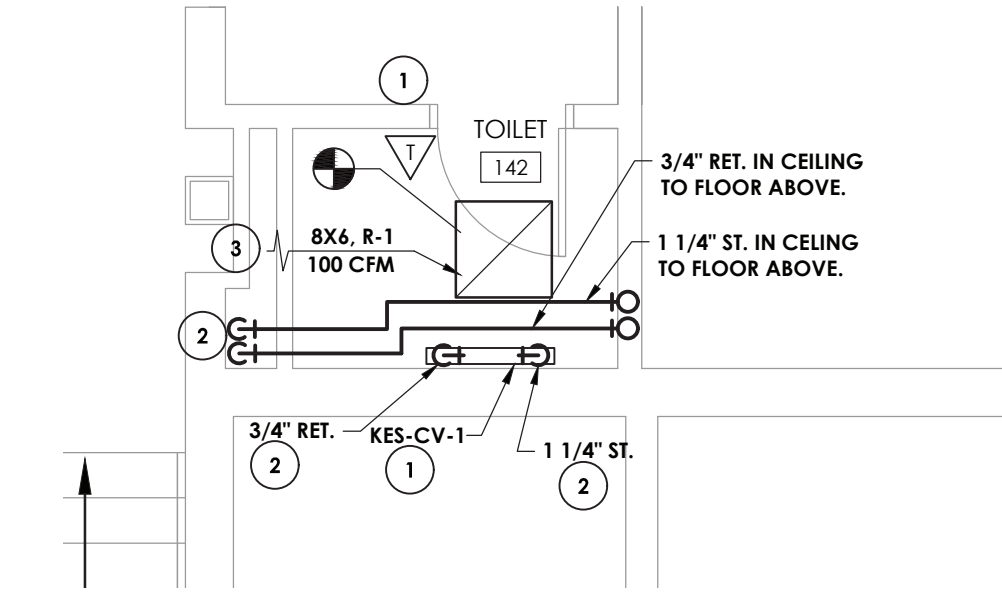
2
H201A
TOILET ROOM 137 NEW WORK PLANS
SCALE: 1/4" = 1'-0"



3
H201A
TOILET ROOM 112 NEW WORK PLANS
SCALE: 1/4" = 1'-0"



4
H201A
TOILET ROOM 120A NEW WORK PLANS
SCALE: 1/4" = 1'-0"



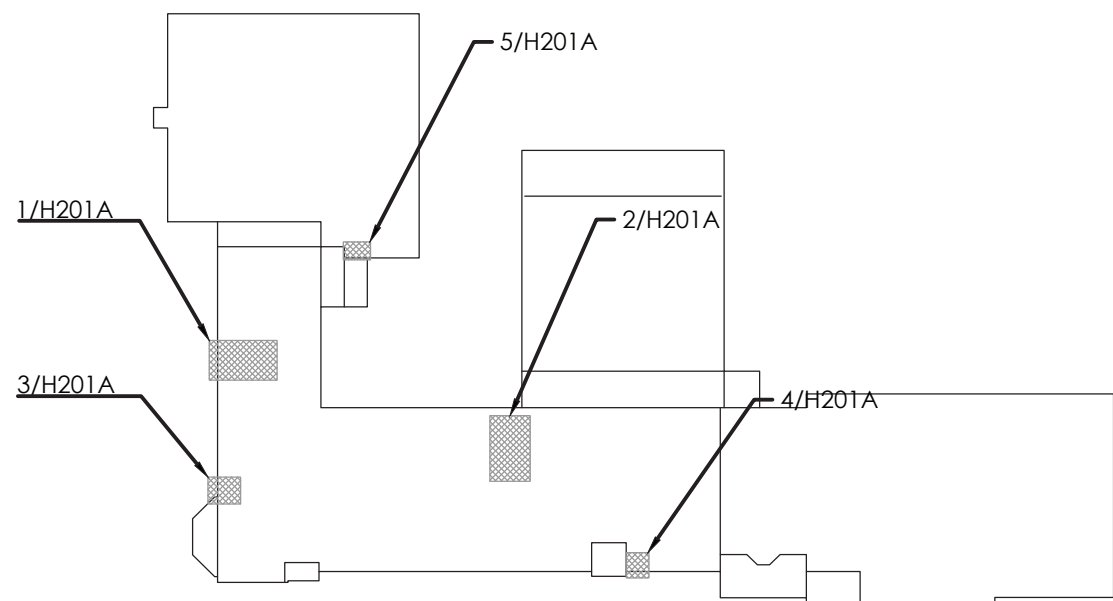
5
H201A
TOILET ROOM 142 NEW WORK PLANS
SCALE: 1/4" = 1'-0"

GENERAL NOTE:

1. ALL CONTROLS WORK SHALL BE PERFORMED BY TECHNICAL BUILDING SERVICES, INC.
CONTACT: ED ROCKSTROH
(P): (518) 885-4444
(E): edrockstroh@tbscontrols.com

KEY NOTES:

- 1 CONTRACTOR SHALL PROVIDE NEW WALL MOUNTED CONVECTORS INCLUDING, CONTROL VALVES, CONTROLS AND THERMOSTAT. SEE SCHEDULE.
- 2 RUN PIPING TO MAIN IN CRAWL SPACE BELOW.
- 3 PROVIDE NEW GRILLE AND CONNECT TO EXISTING DUCTWORK. MODIFY DUCTWORK AS NECESSARY FOR RECONNECTION.



KEY PLAN
SCALE: NTS



CPLteam.com
ARCHITECTURE • ENGINEERING • PLANNING

50 FRONT STREET, SUITE 202
NEWBURGH, NEW YORK 12550
TEL (800) 274-9000

REVISIONS
NO. DATE BY DESCRIPTION

POUGHKEEPSIE CITY SCHOOL DISTRICT
2020 CAPITAL IMPROVEMENT PROJECT
PHASE 1B: BUILDING IMPROVEMENTS

- ☐ POUGHKEEPSIE HIGH SCHOOL: SED# 13-15-00-01-0-007-018
- ☐ POUGHKEEPSIE MIDDLE SCHOOL: SED# 13-15-00-01-0-008-021
- ☐ POUGHKEEPSIE ELEMENTARY SCHOOL: SED# 13-15-00-01-0-009-014
- ☐ KREIGER ELEMENTARY SCHOOL: SED# 13-15-00-01-0-004-014
- ☐ MORSE ELEMENTARY SCHOOL: SED# 13-15-00-01-0-002-014
- ☐ WARRING ELEMENTARY SCHOOL: SED# 13-15-00-01-0-005-013
- ☐ COLCUMBIUS ELEMENTARY SCHOOL: SED# 13-15-00-01-0-001-014

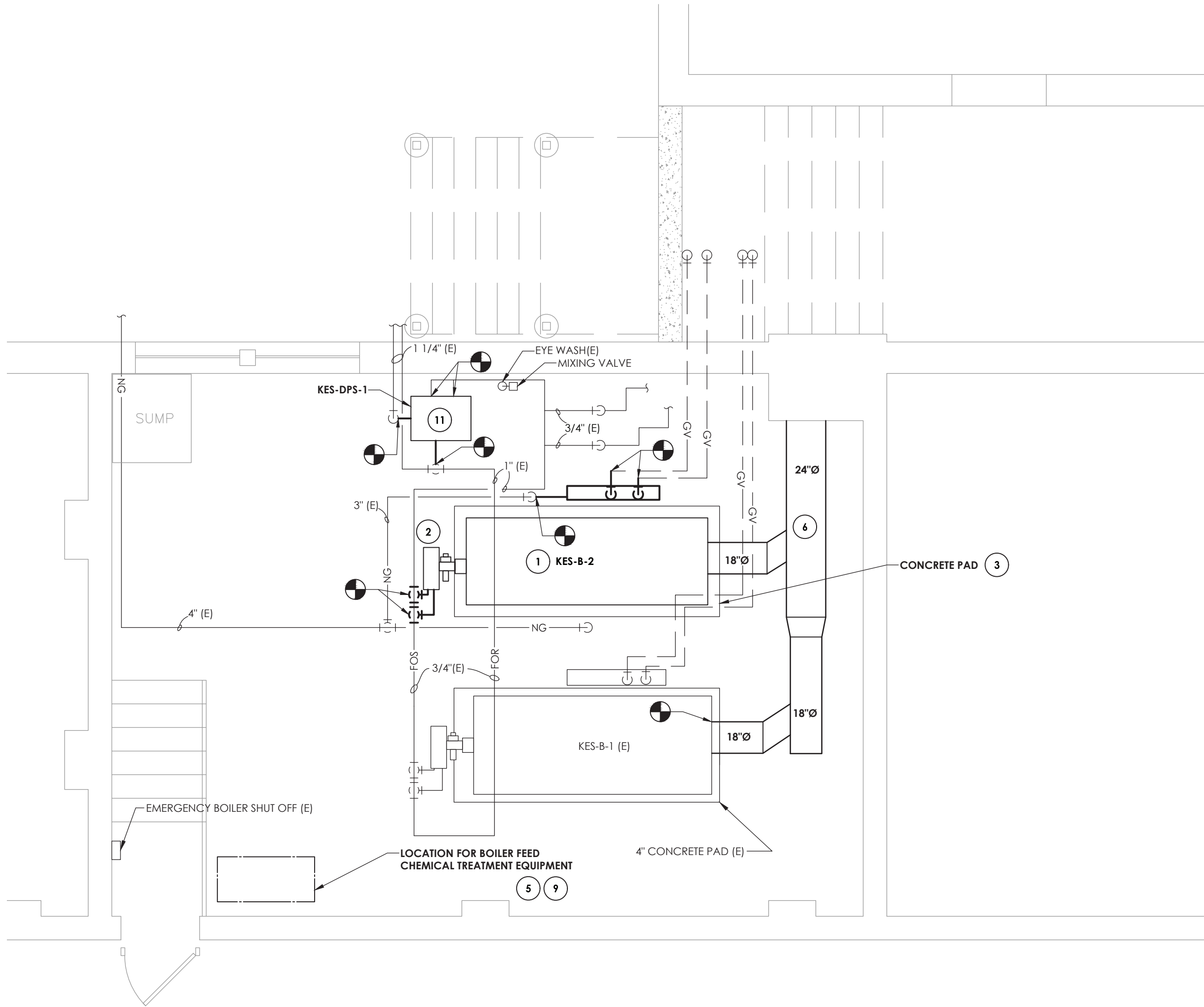
DATE 10/20/2021 DRAWN BEF CHECKED AJS

SCALE: 1/4" = 1'-0"

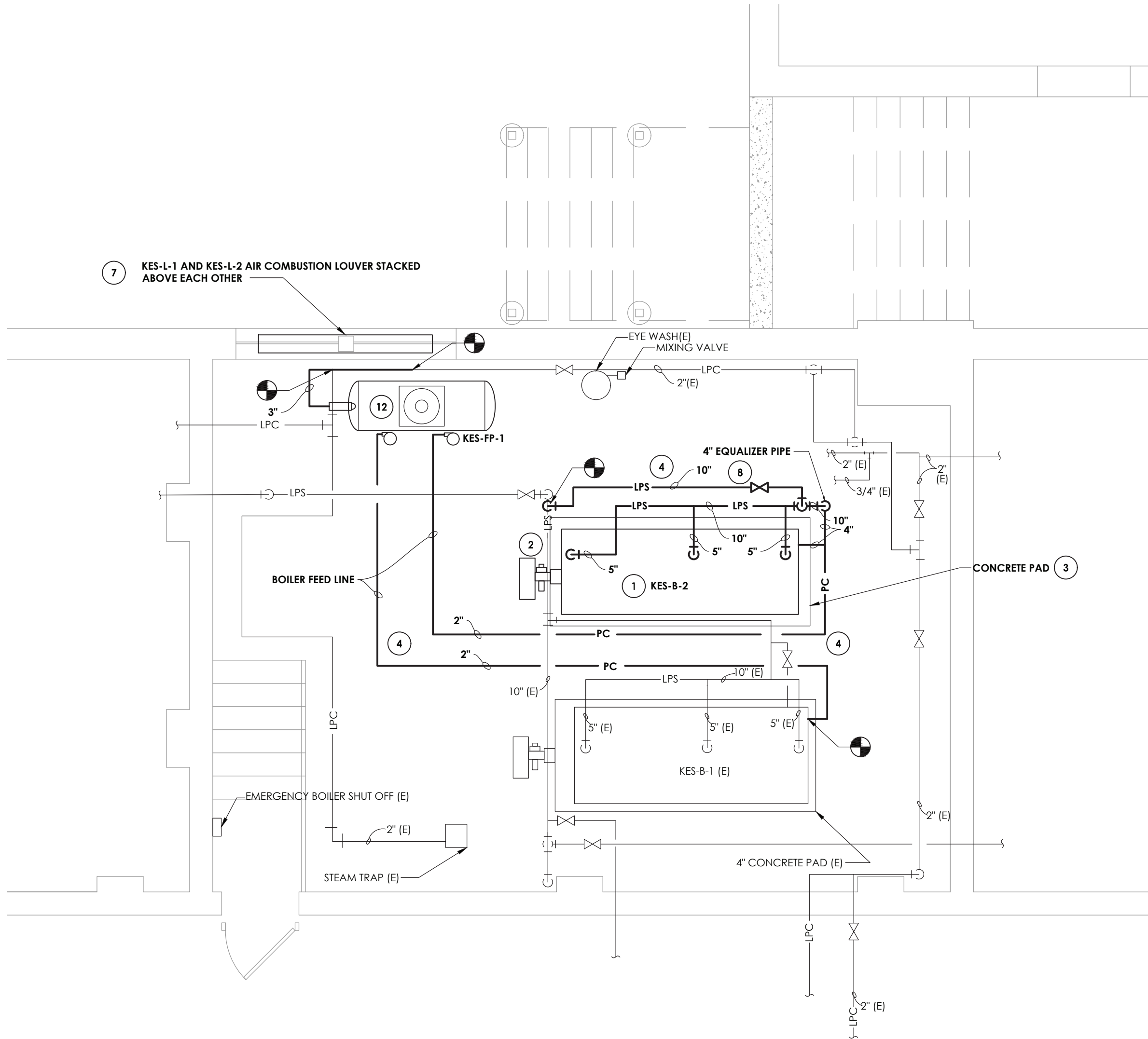
SHEET TITLE
KREIGER ELEMENTARY
SCHOOL FIRST FLOOR
TOILET ROOMS
NEW WORK PLANS

PROJECT NUMBER
14078.09

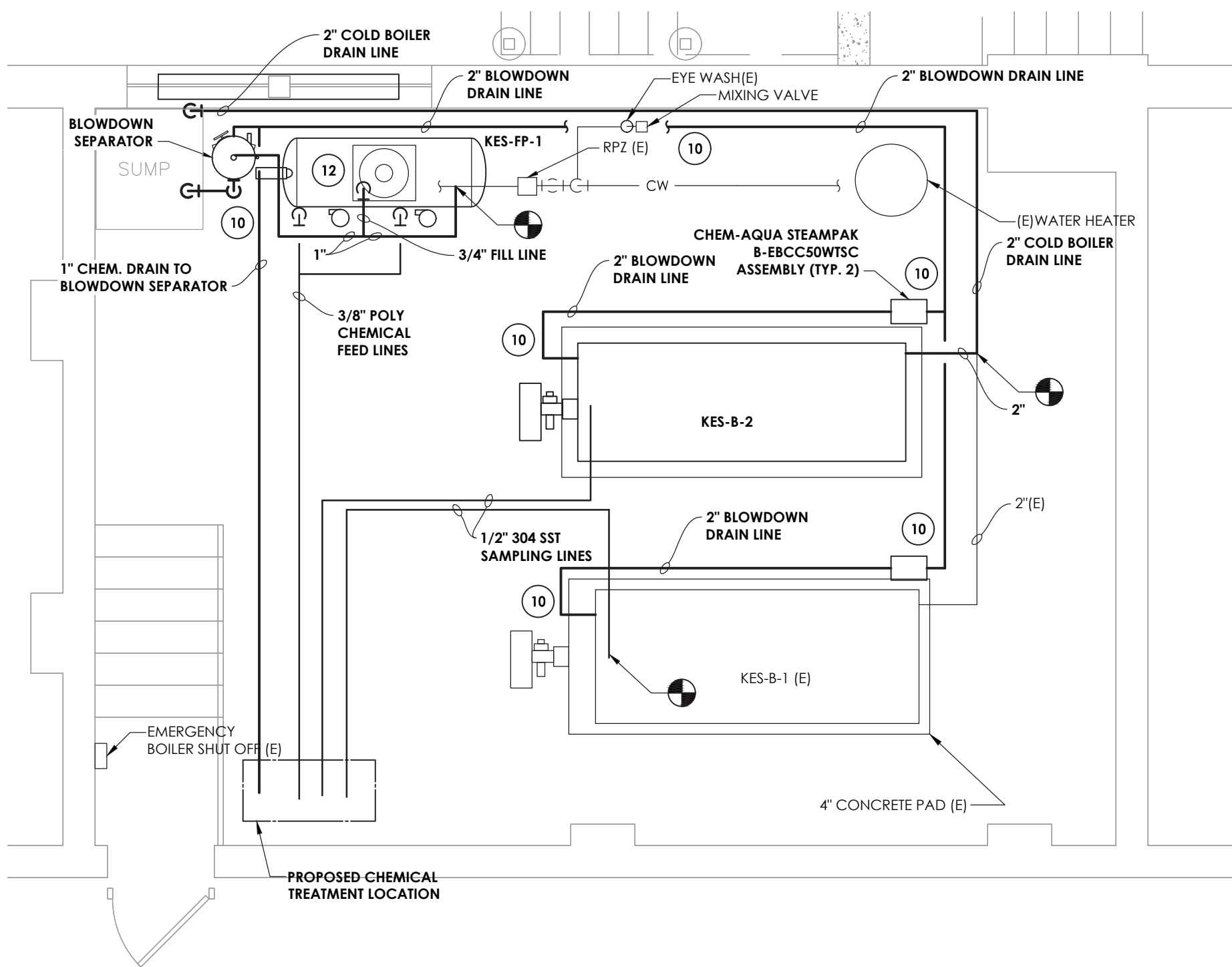
KES
H201A
DRAWING NUMBER



1 OIL, FLUE, AND NATURAL GAS NEW WORK PLAN
H201B SCALE: 1/4" = 1'-0"



2 DOMESTIC WATER, CONDENSATE RETURN AND STEAM SUPPLY NEW WORK PLAN
H201B SCALE: 1/4" = 1'-0"



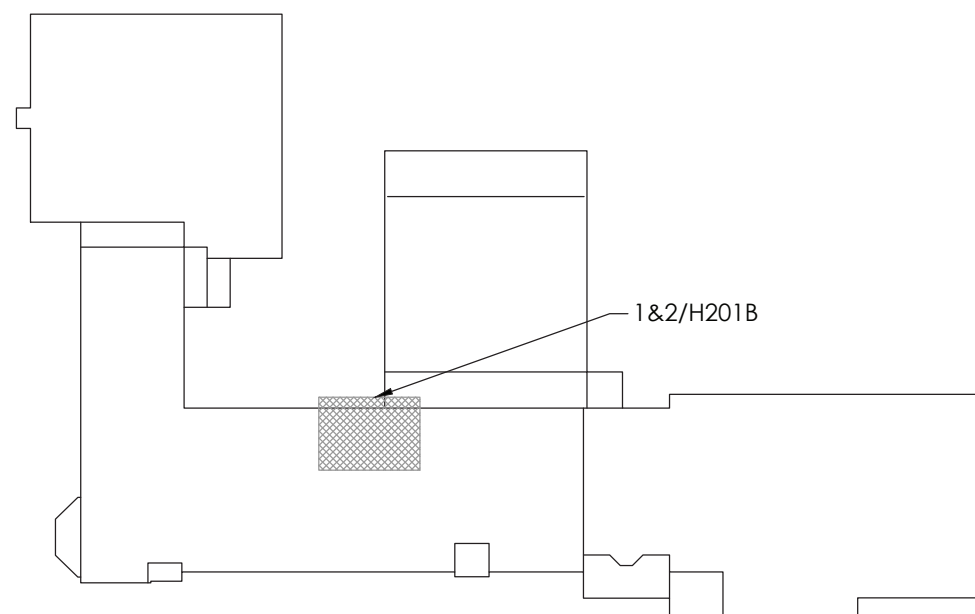
3 DRAIN, CHEMICAL LINES AND MAKEUP WATER NEW WORK PLAN
H201B SCALE: 1/4" = 1'-0"

GENERAL NOTE:

1. ALL CONTROLS WORK SHALL BE PERFORMED BY TECHNICAL BUILDING SERVICES, INC.
CONTACT: ED ROCKSTROH
(P): (518) 885-4444
(E): edrockstroh@tbscontrols.com

KEY NOTES:

1. CONTRACTOR SHALL PROVIDE AND INSTALL NEW DUAL FUEL BOILER INCLUSIVE OF NEW TRIM, BOILER LEVEL CONTROLS, AND SAFETIES AS REQUIRED BY CODE AND LOCAL AUTHORITIES HAVING JURISDICTION. CONTRACTOR SHALL ENGAGE A FACTORY AUTHORIZED TECHNICIAN TO EXECUTE AND DOCUMENT ALL MANUFACTURES SUGGESTED START UP AND COMMISSIONING TESTING INCLUDING THE BOILER, FUEL SYSTEMS, AND ALL RELATED CONTROL SYSTEMS.
2. PROVIDE A NEW DUAL FUEL MODULATING BURNER SYSTEM.
3. INSTALL CONCRETE HOUSEKEEPING PAD PER PLANS TO ACCOMMODATE THE NEW BOILER. PROVIDE NEOPRENE VIBRATION ISOLATION PAD AT BOILER BASE MOUNTING POINTS.
4. PROVIDE AND INSTALL NEW PIPING, HANGERS, SUPPORTS, ACCESSORIES, AND FIBERGLASS INSULATION ACCORDING TO PLANS AND POINTS OF CONNECTION. REFER TO DETAILS AND SCHEDULES. MANUFACTURED FITTINGS SHALL BE INSTALLED ACCORDING TO THE MANUFACTURERS REQUIREMENTS AND TOLERANCES.
5. CONTRACTORS SHALL ENGAGE A LOCAL SUPPLIER AND INSTALL NEW BOILER FEED WATER CHEMICAL TREATMENT SYSTEMS.
6. PROVIDE NEW BREECHING AND FOR NEW AND EXISTING BOILERS. RUN NEW BREECHING UP THROUGH EXISTING CHIMNEY AND TERMINATE 5' ABOVE ROOF LINE WITH VENT CAP.
7. PROVIDE AND INSTALL COMBUSTION AIR LOUVERS. MODIFY OPENING AS NECESSARY FOR INSTALLATION. PATCH WALL WITH LIKE CONSTRUCTION.
8. INSTALL ISOLATION VALVE. VALVE SHALL MEET ORIGINAL MANUFACTURING TOLERANCES AND RESTORED TO NEW CONDITION OR BE REPLACED WITH NEW VALVE ASSEMBLY.
9. COORDINATE WITH NEW CHEMICAL TREATMENT SYSTEM. RECONNECT BOILER FEED WATER PIPING TO NEW BOILERS PER MANUFACTURING REQUIREMENTS INCLUDING ALL NEW SAFETY AND CONTROLS DEVICES AND CONNECTIONS AS REQUIRED FAR A FULLY FUNCTIONAL AND COMPLIANT SYSTEM. CONTRACTOR SHALL START UP AND COMMISSION BOILER FEED SYSTEM.
10. PROVIDE AND INSTALL NEW DRAIN PIPING AND CONNECTION TO EXISTING FLOOR DRAIN.
11. PROVIDE AND INSTALL NEW FUEL OIL PUMPS. RECONNECT TO EXISTING FUEL OIL SUPPLY AND RETURN PIPING. MODIFY PIPING AS NECESSARY FOR RECONNECTION.
12. PROVIDE AND INSTALL NEW COMBINATION VACUUM & BOILER FEED PUMP. RECONNECT EXISTING CONDENSATE PIPING. MODIFY PIPING AS NECESSARY FOR RECONNECTION.



KEY PLAN
SCALE: NTS



ARCHITECTURE • ENGINEERING • PLANNING

50 FRONT STREET, SUITE 202
NEWBURGH, NEW YORK 12550
TEL (800) 274-9000

REVISIONS	NO.	DATE	BY	DESCRIPTION



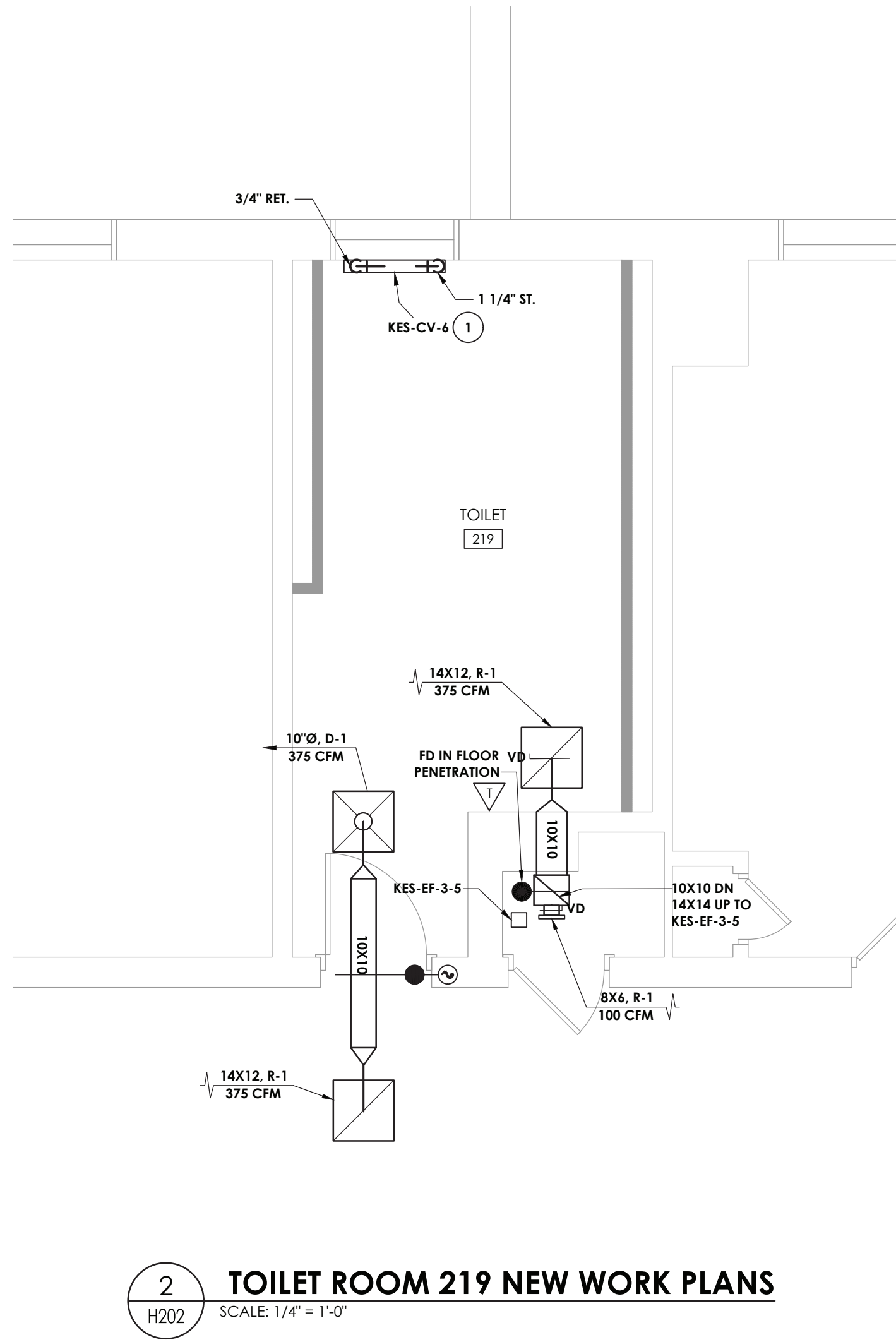
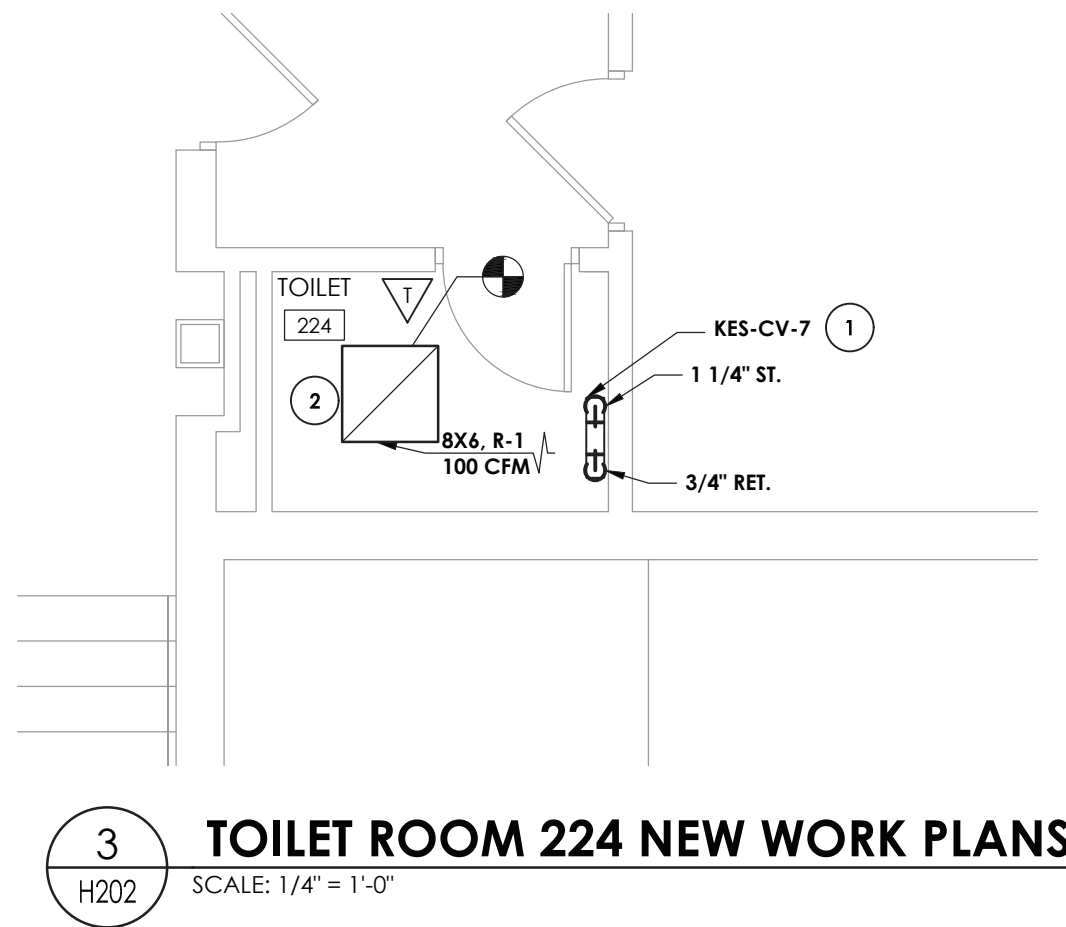
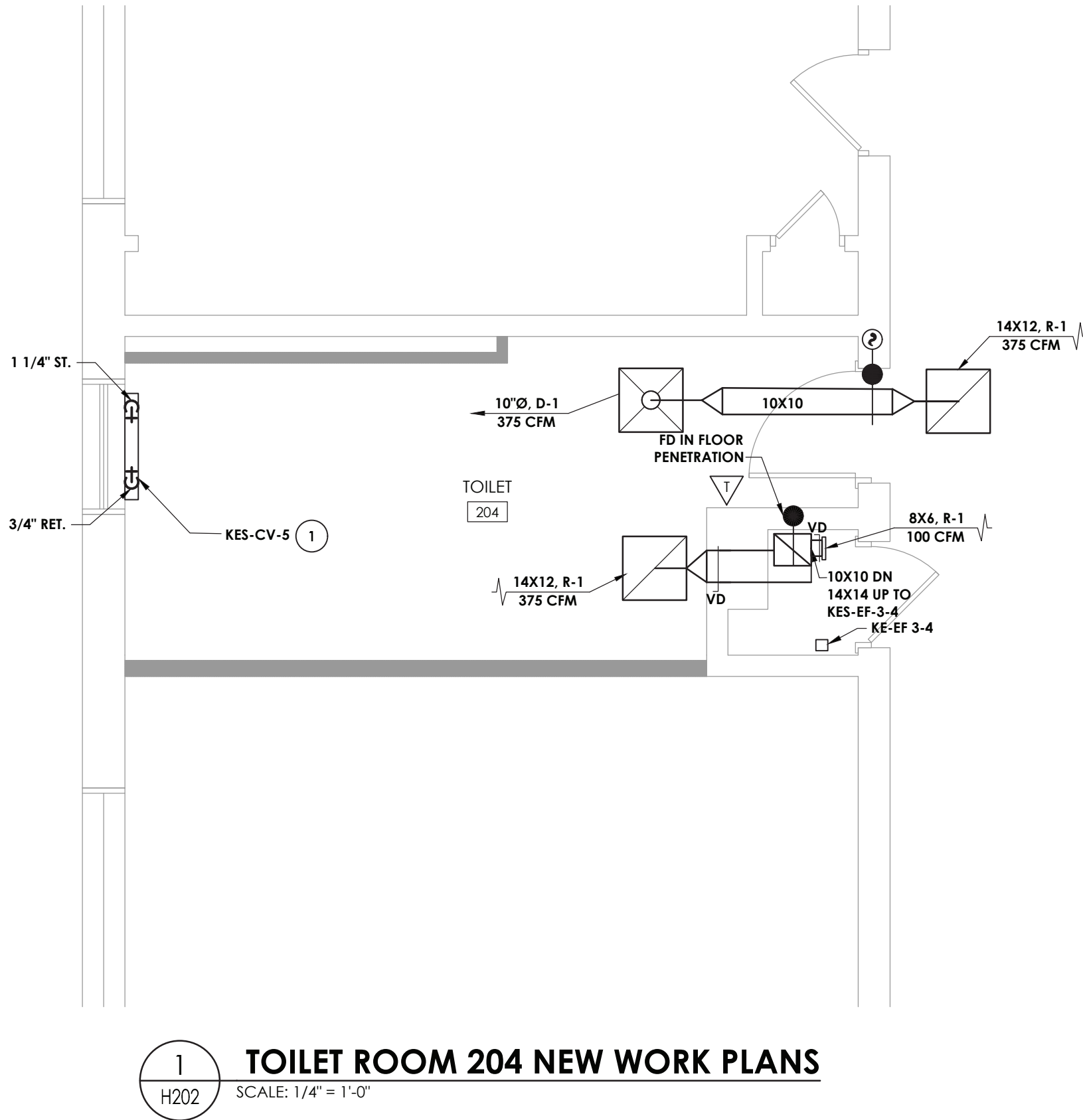
POUGHKEEPSIE CITY SCHOOL DISTRICT	
2020 CAPITAL IMPROVEMENT PROJECT	
PHASE 1B: BUILDING IMPROVEMENTS	
<input type="checkbox"/> POUGHKEEPSIE HIGH SCHOOL: SED# 13-15-0001-0-007-018 <input type="checkbox"/> POUGHKEEPSIE MIDDLE SCHOOL: SED# 13-15-0001-0-001-5021 <input type="checkbox"/> POUGHKEEPSIE JUNIOR HIGH SCHOOL: SED# 13-15-0001-0-004-014 <input type="checkbox"/> KREIGER ELEMENTARY SCHOOL: SED# 13-15-0001-0-004-014 <input type="checkbox"/> MORSE ELEMENTARY SCHOOL: SED# 13-15-0001-0-002-014 <input type="checkbox"/> WARRING ELEMENTARY SCHOOL: SED# 13-15-0001-0-005-013 <input type="checkbox"/> COLLEGE ELEMENTARY SCHOOL: SED# 13-15-0001-0-001-014	

DATE	DRAWN	CHECKED
10/20/2021	BEF	AJS

SCALE: 1/4" = 1'-0"

SHEET TITLE
KREIGER ELEMENTARY
BOILER ROOM
NEW WORK PLANS

PROJECT NUMBER
14078.09
KES H201B
DRAWING NUMBER

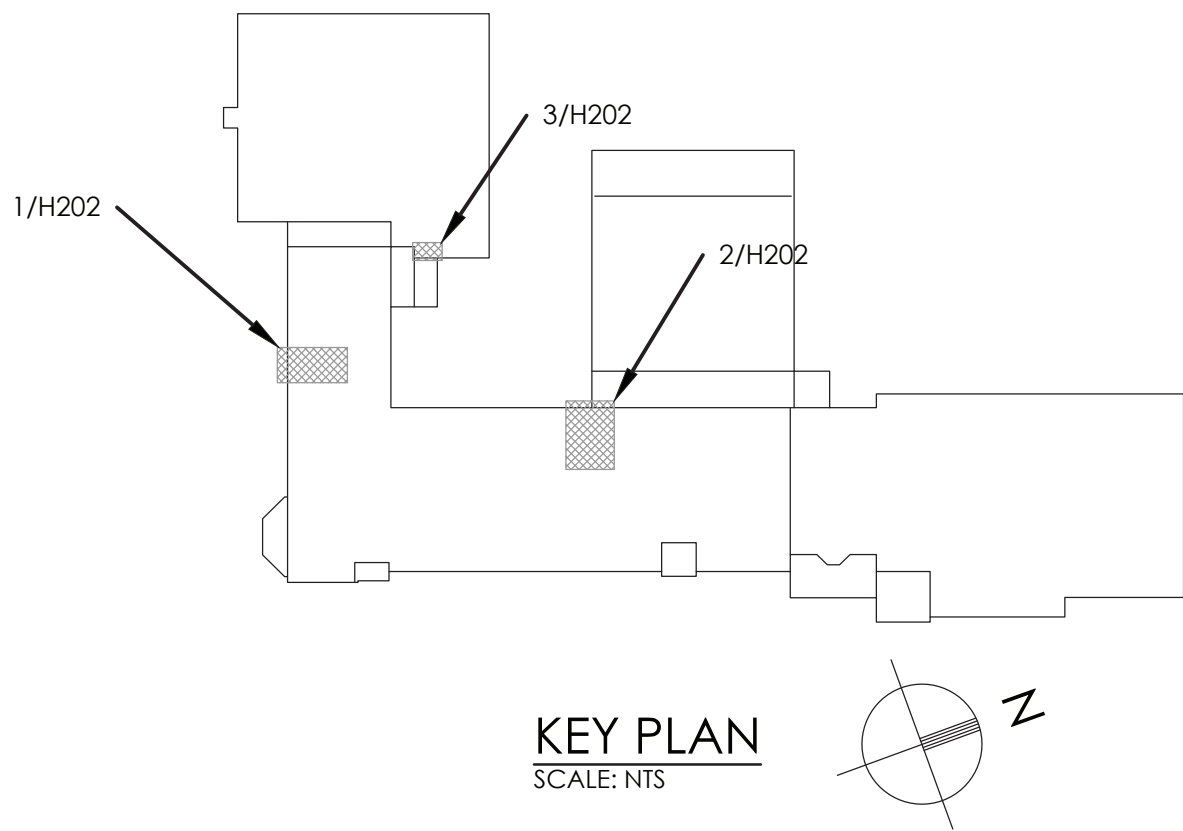


GENERAL NOTE:

- ALL CONTROLS WORK SHALL BE PERFORMED BY TECHNICAL BUILDING SERVICES, INC.
CONTACT: ED ROCKSTROH
(P): (518) 885-4444
(E): edrockstroh@tbscontrols.com

KEY NOTES:

- CONTRACTOR SHALL PROVIDE NEW WALL MOUNTED CONVECTORS INCLUDING, CONTROL VALVES, CONTROLS AND THERMOSTAT. SEE SCHEDULE.
- PROVIDE NEW GRILLE AND RECONNECT TO EXISTING DUCTWORK. MODIFY DUCTWORK AS NECESSARY FOR RECONNECTION. PROVIDE WITH VOLUME DAMPER.



CPL

CPLteam.com
ARCHITECTURE • ENGINEERING • PLANNING

50 FRONT STREET, SUITE 202
NEWBURGH, NEW YORK 12550
TEL (800) 274-9000

REVISIONS	DESCRIPTION	
	NO.	DATE



POUGHKEEPSIE CITY SCHOOL DISTRICT
2020 CAPITAL IMPROVEMENT PROJECT
PHASE 1B: BUILDING IMPROVEMENTS

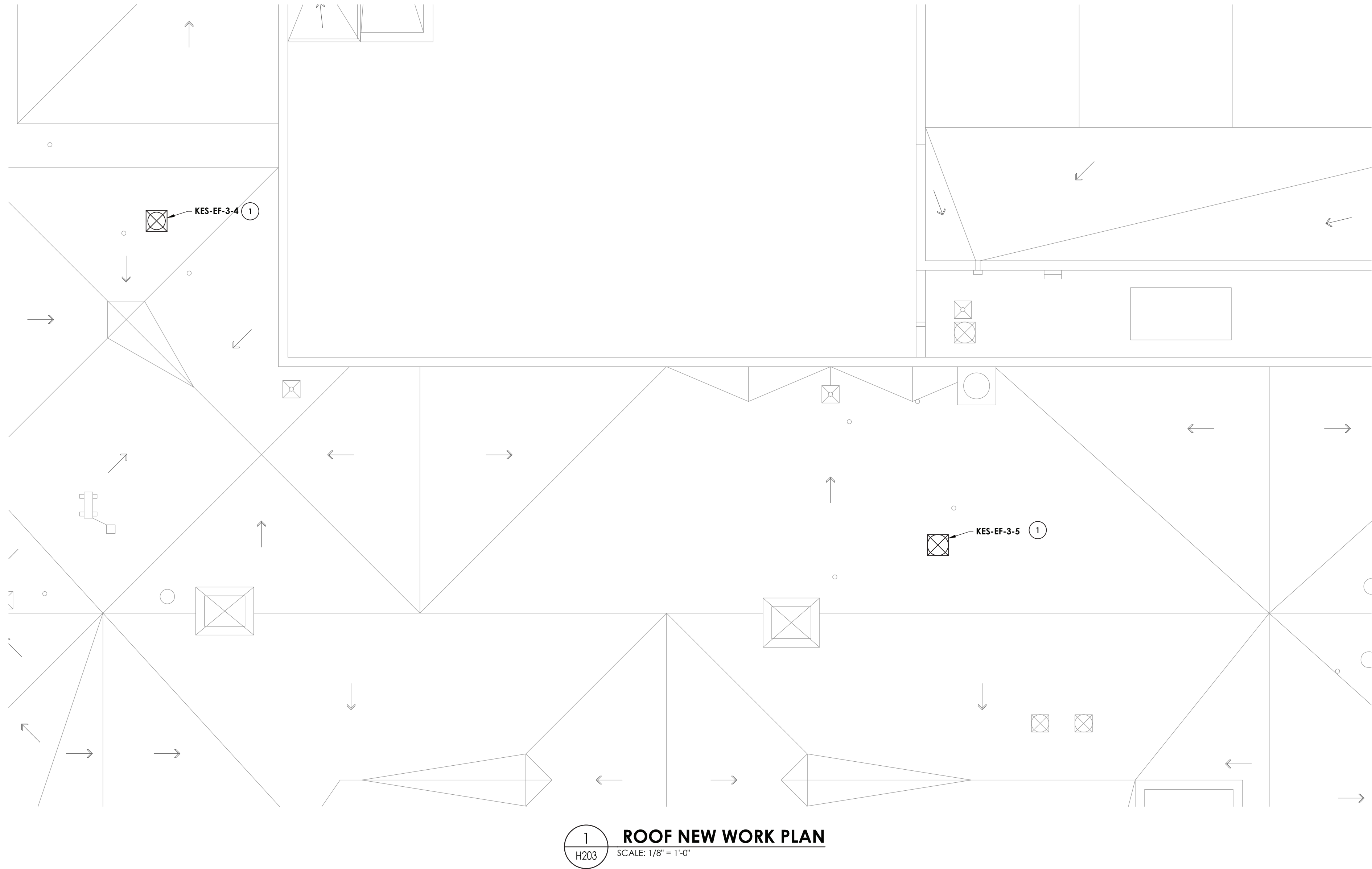
- ☐ POUGHKEEPSIE HIGH SCHOOL: SED# 13-15-00-01-0-007-018
- ☐ POUGHKEEPSIE MIDDLE SCHOOL: SED# 13-15-00-01-0-008-021
- ☐ POUGHKEEPSIE JUNIOR HIGH SCHOOL: SED# 13-15-00-01-0-009-014
- ☐ KREIGER ELEMENTARY SCHOOL: SED# 13-15-00-01-0-004-014
- ☐ MORSE ELEMENTARY SCHOOL: SED# 13-15-00-01-0-002-014
- ☐ WARRING ELEMENTARY SCHOOL: SED# 13-15-00-01-0-005-013
- ☐ COLUMBIUS ELEMENTARY SCHOOL: SED# 13-15-00-01-0-001-014

DATE	DRAWN	CHECKED
10/20/2021	BEF	AJS
SCALE: 1/4" = 1'-0"		
SHEET TITLE		
KREIGER ELEMENTARY SCHOOL SECOND FLOOR TOILET ROOMS NEW WORK PLANS		

PROJECT NUMBER
14078.09

**KES
H202**

DRAWING NUMBER

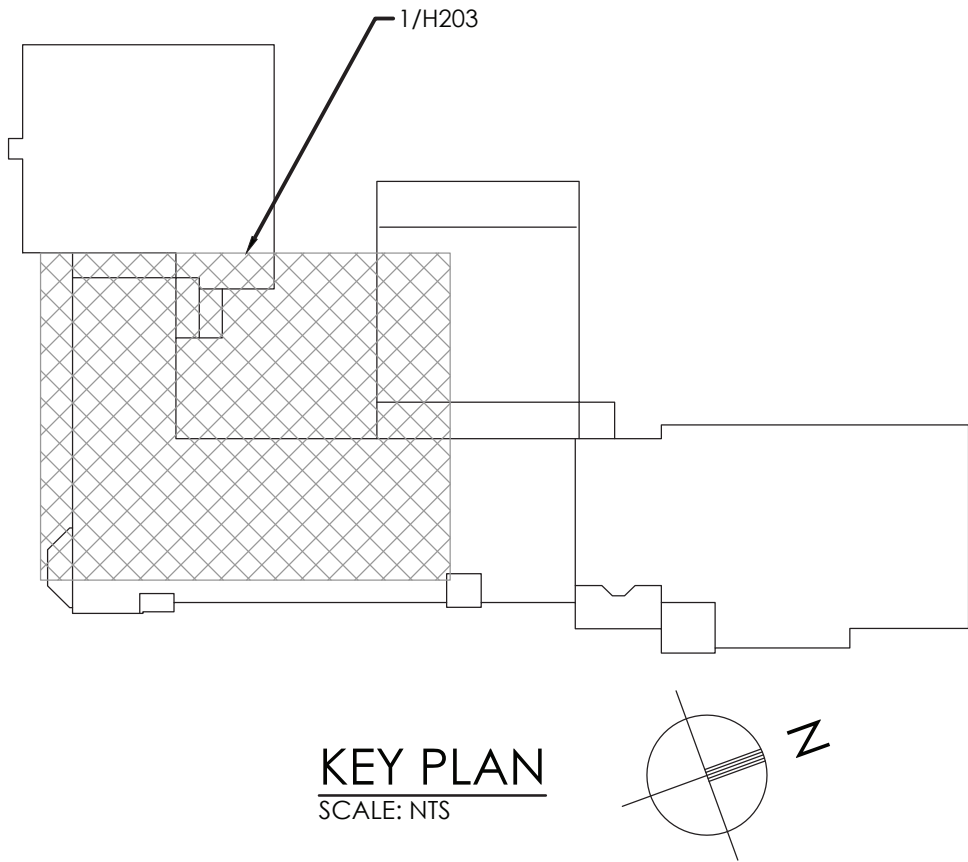


GENERAL NOTE:

1. ALL CONTROLS WORK SHALL BE PERFORMED BY TECHNICAL BUILDING SERVICES, INC.
CONTACT: ED ROCKSTROH
(P): (518) 885-4444
(E): edrockstroh@tbscontrols.com

KEY NOTES:

1 PROVIDE NEW EXHAUST FAN IN LOCATION OF REMOVED FAN. M.C. TO PROVIDE CURB AND MARK OUT LOCATION ON ROOF. COORDINATE INSTALLATION AND PATCHING WITH G.C.



50 FRONT STREET, SUITE 202
NEWBURGH, NEW YORK 12550
TEL (800) 274-9000

REVISIONS		DATE	BY	DESCRIPTION
NO.				

POUGHKEEPSIE CITY SCHOOL DISTRICT
2020 CAPITAL IMPROVEMENT PROJECT
PHASE 1B: BUILDING IMPROVEMENTS

- POUGHKEEPSIE HIGH SCHOOL: SED# 13-15-0001-0-007-018
- POUGHKEEPSIE MIDDLE SCHOOL: SED# 13-15-0001-0-008-021
- POUGHKEEPSIE ELEMENTARY SCHOOL: SED# 13-15-0001-0-009-014
- KREIGER ELEMENTARY SCHOOL: SED# 13-15-0001-0-004-014
- MORSE ELEMENTARY SCHOOL: SED# 13-15-0001-0-002-014
- WARRING ELEMENTARY SCHOOL: SED# 13-15-0001-0-005-013
- WARRING ELEMENTARY SCHOOL: SED# 13-15-0001-0-006-014
- COLUMBUS ELEMENTARY SCHOOL: SED# 13-15-0001-0-001-014

DATE	DRAWN	CHECKED
10/20/2021	BEF	AJS

SCALE: 1/8" = 1'-0"

SHEET TITLE
KREIGER ELEMENTARY
ROOF NEW WORK
PLAN

PROJECT NUMBER
14078.09

KES
H203
DRAWING NUMBER