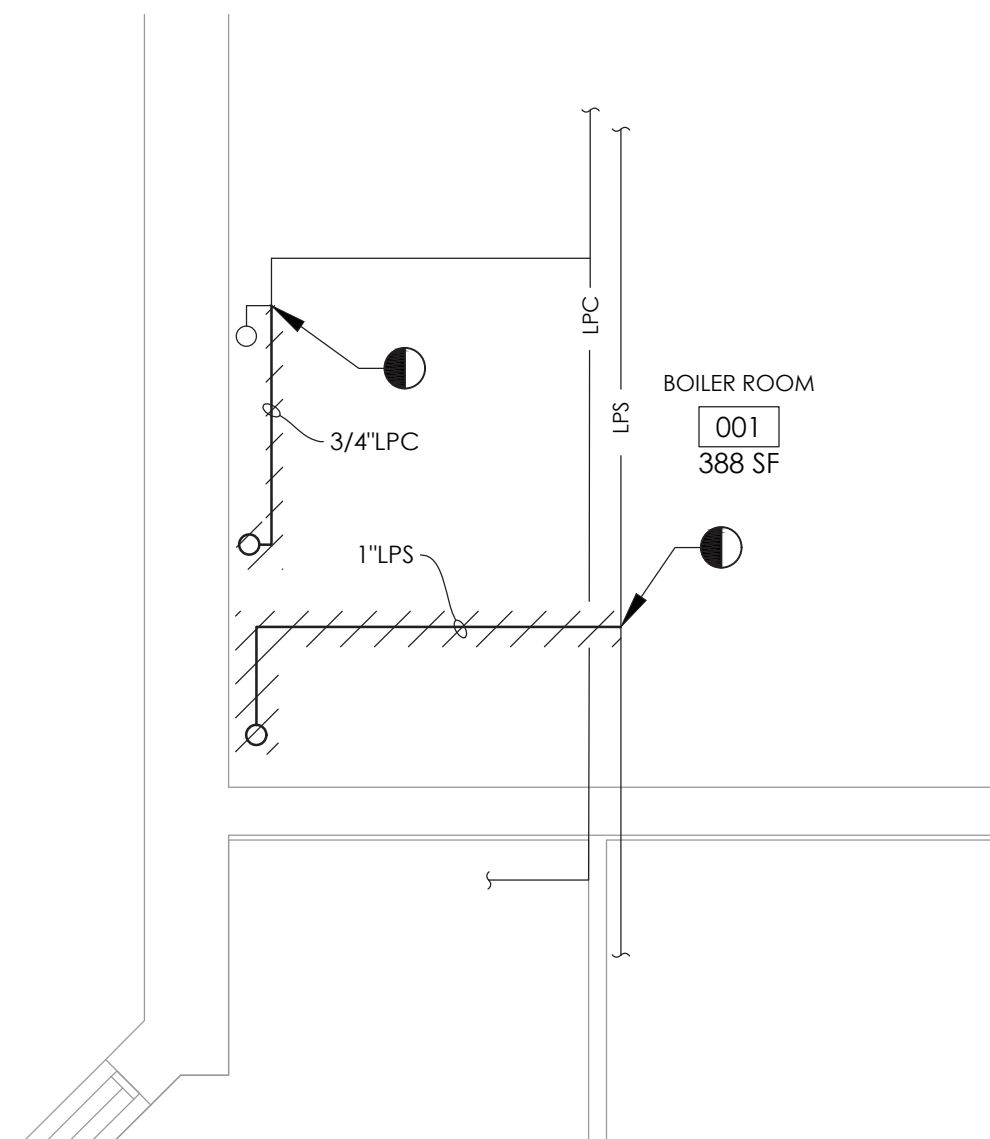
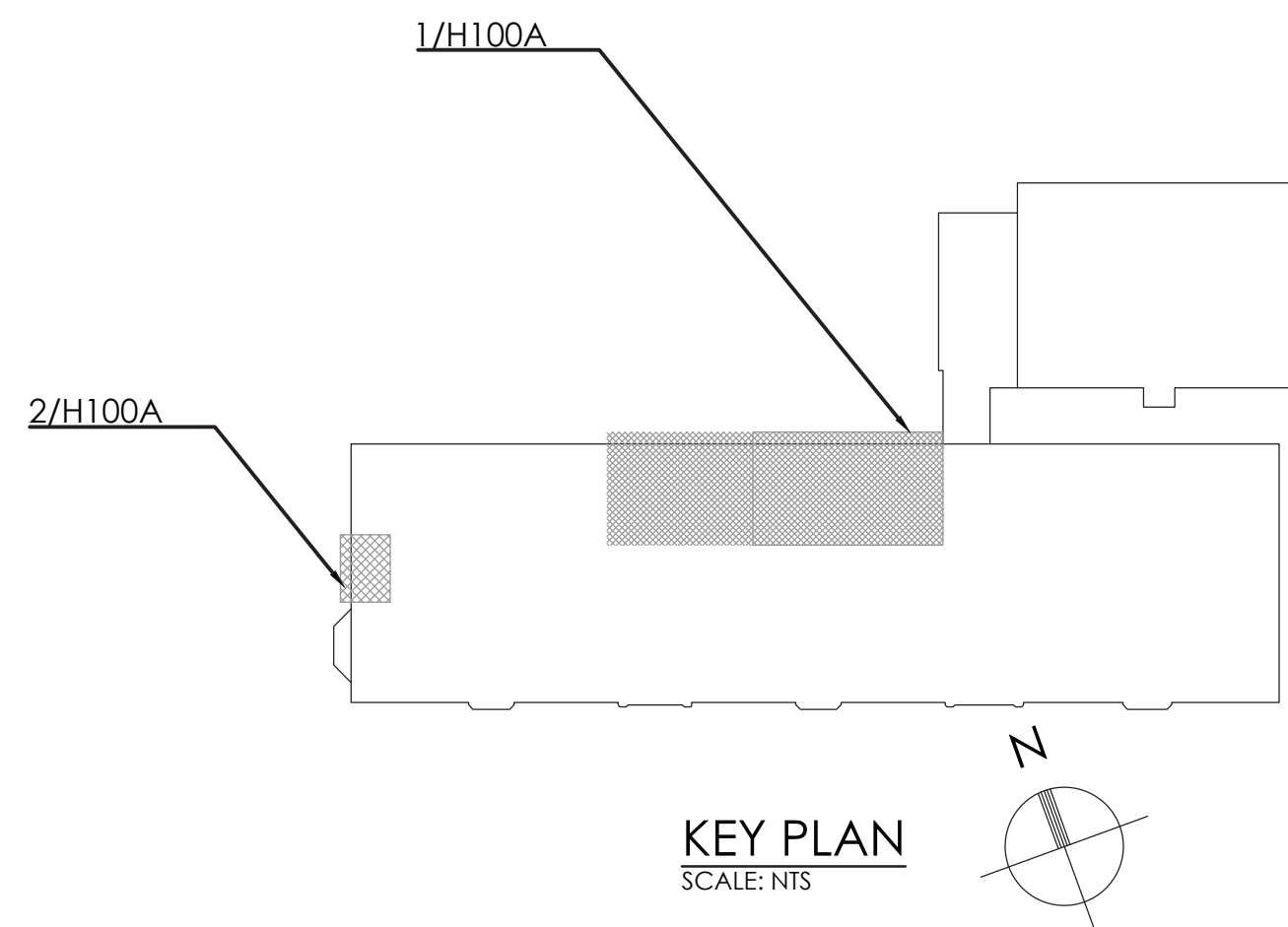


TOILET ROOM DEMOLITION PLAN
SCALE: 1/4" = 1'-0"



2 H100A STEAM & CONDENSATE PIPING DEMOLITION PLAN SCALE: 1/4" = 1'-0"



GENERAL NOTES:

1. FIELD VERIFY EXACT DUCT AND PIPING LOCATIONS AND SIZES PRIOR TO DEMOLITION AND COORDINATE SPECIFIC POINTS OF REMOVAL LOCATIONS BASED ON NEW UNIT DIMENSIONS AND CONFIGURATIONS

KEY NOTES:

- 1 REMOVE EXISTING STEAM RADIATOR IN ITS ENTIRETY INCLUDING ALL PIPING, TRAPS, CONTROLS AND THERMOSTAT. REMOVE PIPING BACK TO MAINS AND PREPARE FOR NEW WORK.
- 2 REMOVE EXISTING EXHAUST GRILLE AND DISCONNECT FROM EXISTING DUCTWORK. PREPARE FOR NEW WORK.



CPLteam.com
ARCHITECTURE ■ ENGINEERING ■ PLANNING

50 FRONT STREET, SUITE 202
NEWBURGH, NEW YORK 12550
TEL (800) 274-9000

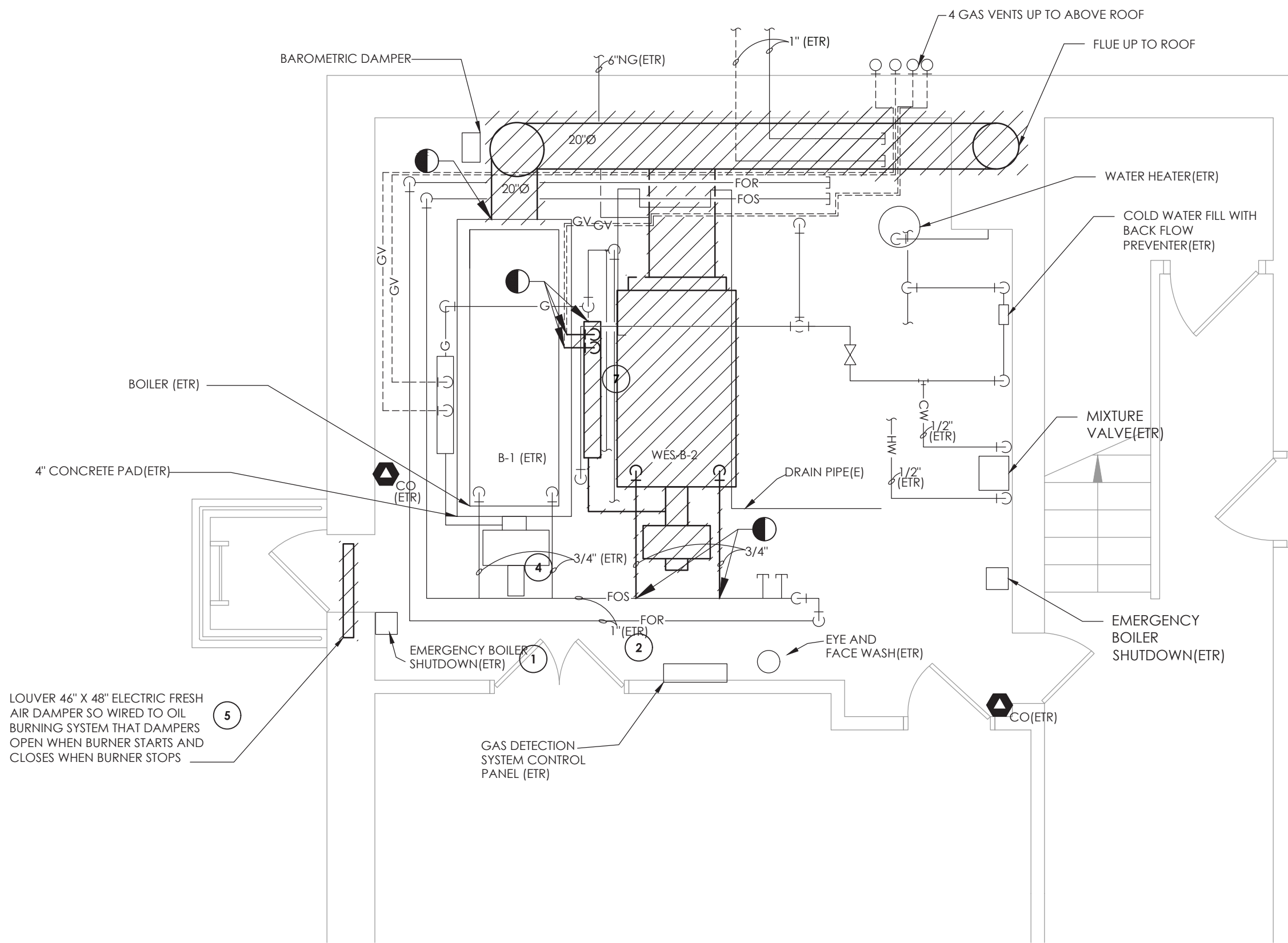
REVISIONS			
NO.	DATE	BY	DESCRIPTION

PHASE 1B: BUILDING IMPROVEMENTS

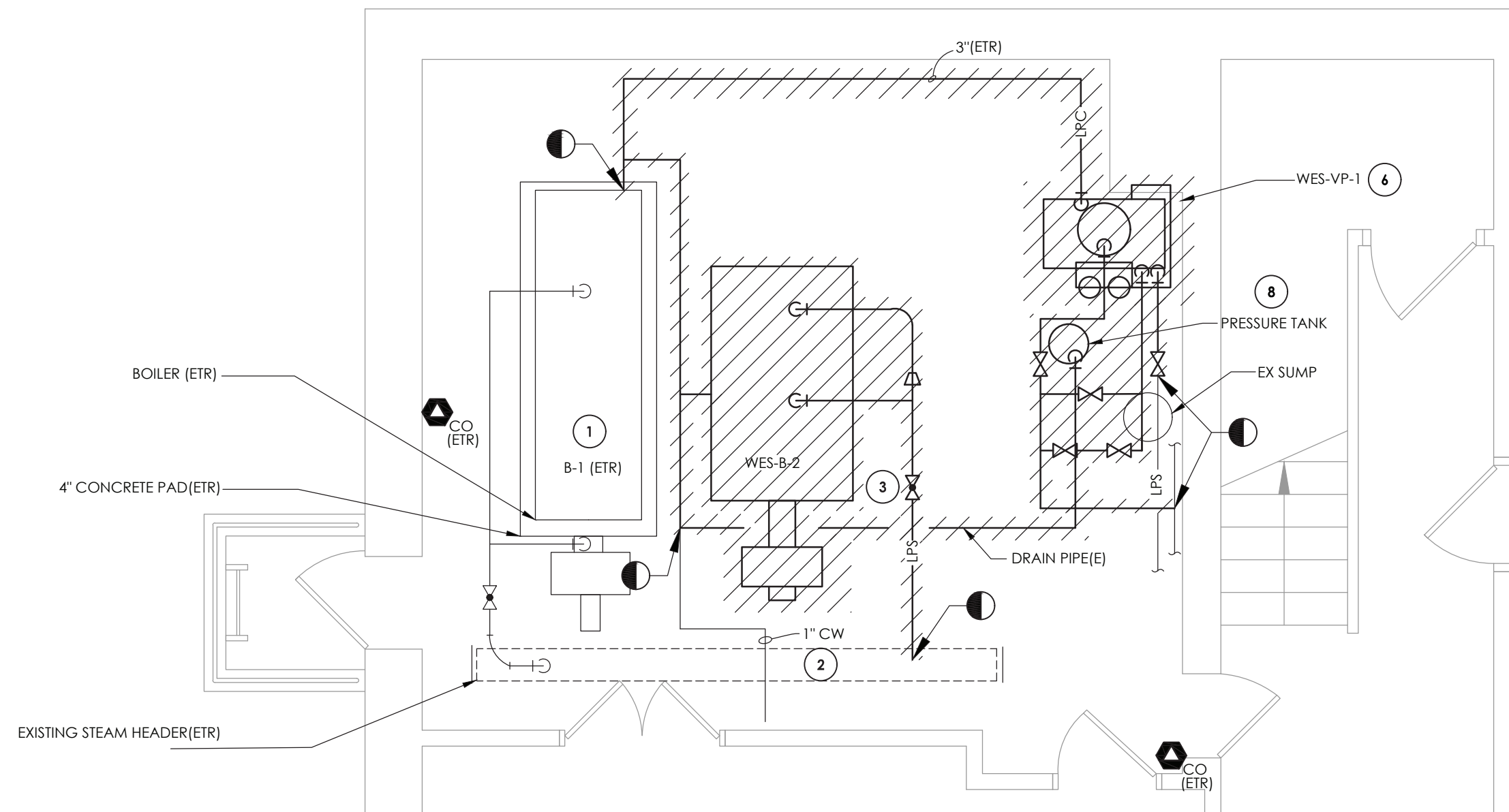
- ☐ POWHKEEPSIE CITY SCHOOL, SED# 13: 15,000-01, 0,007-019
- ☐ POWHKEEPSIE MIDDLE SCHOOL, SED# 13: 15,000-01, 0,007-021
- ☐ CLUNTON ELEMENTARY SCHOOL, SED# 13: 15,000-01, 0,004-014
- ☐ KRIEGER ELEMENTARY SCHOOL, SED# 13: 15,000-01, 0,006-014
- ☐ KRIEGER ELEMENTARY SCHOOL, SED# 13: 15,000-01, 0,002-014
- ☐ WORKING CLASS ELEMENTARY SCHOOL, SED# 13: 15,000-01, 0,008-022
- ☐ SMITH EARLY LEARNING CENTER, SED# 13: 15,000-01, 0,008-022
- ☐ COLUMBUS ELEMENTARY SCHOOL, SED# 13: 15,000-01, 0,001-011

DATE 10/20/2021	DRAWN BEF	CHECKED AJS
SCALE 1/4" = 1'-0"		
SHEET TITLE WARRING ELEMENTARY SCHOOL BASEMENT TOILET ROOMS DEMOLITION PLANS		

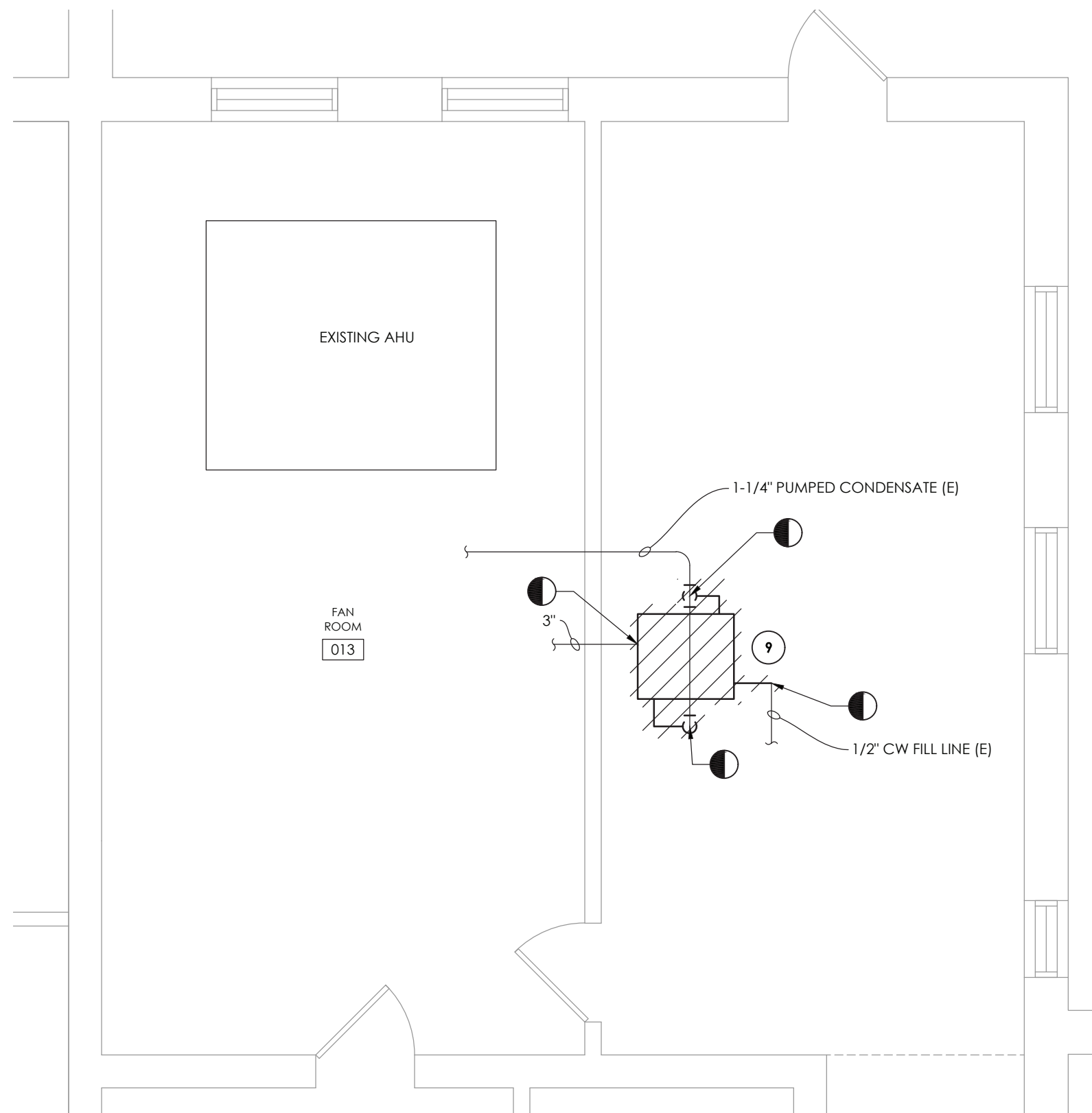
PROJECT NUMBER
14078.09
WES
H100A
DRAWING NUMBER



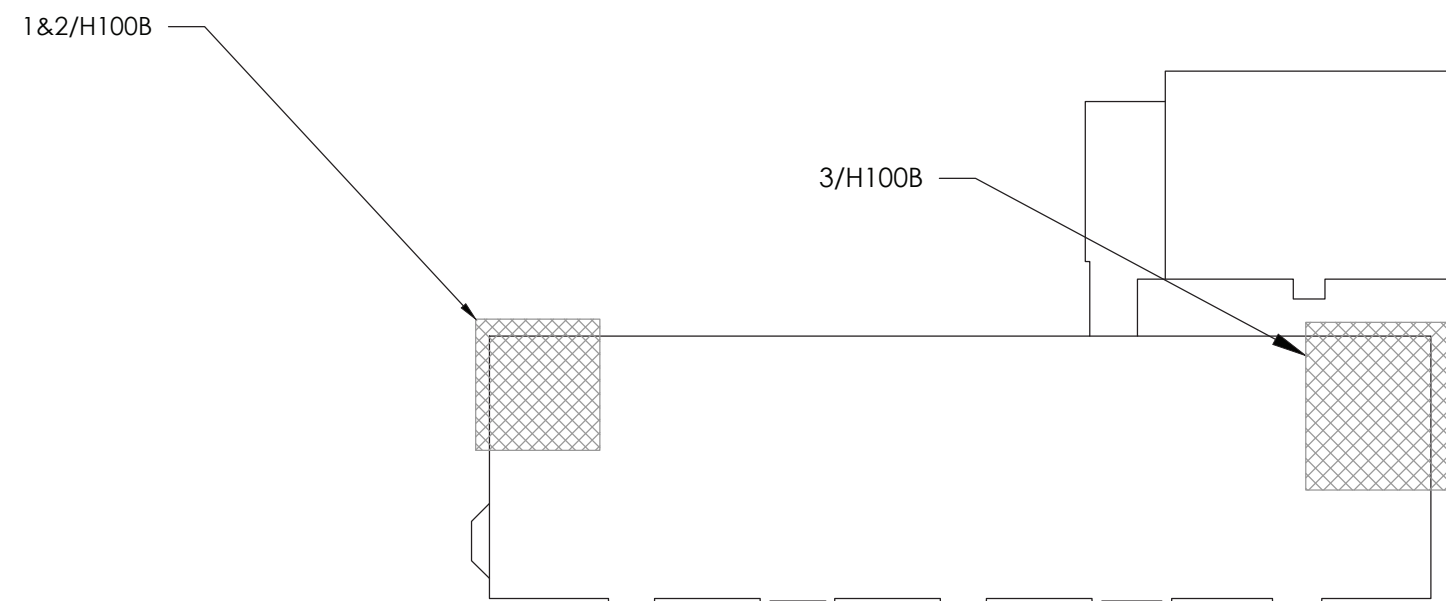
1
H100B
NATURAL GAS AND OIL DEMOLITION PLAN
SCALE: 1/4" = 1'-0"



2
H100B
STEAM AND LOW PRESSURE CONDENSATE DEMOLITION PLAN
SCALE: 1/4" = 1'-0"



3
H100B
STEAM AND LOW PRESSURE CONDENSATE NEW WORK PLAN
SCALE: 1/4" = 1'-0"



KEY PLAN
SCALE: NTS

GENERAL NOTES:

1. FIELD VERIFY EXACT DUCT AND PIPING LOCATIONS AND SIZES PRIOR TO DEMOLITION AND COORDINATE SPECIFIC POINTS OF REMOVAL LOCATIONS BASED ON NEW UNIT DIMENSIONS AND CONFIGURATIONS.
2. CONTRACTOR SHALL CLEAN AND INSPECT EXISTING CHIMNEY IN ACCORDANCE WITH 2020 IMC SECTION 801.18.

KEY NOTES:

1. EXISTING WEIL MCLAIN 1588 BOILER AND POWER FLAME WCR3-GO-25B TO REMAIN
2. REMOVE EXISTING BOILER IN ITS ENTIRETY INCLUDING BURNER. DISCONNECT STEAM SUPPLY, CONDENSATE RETURN, FOS & R, GAS LINES TO POINTS INDICATED, AND GAS TRAIN PREPARE FOR NEW WORK.
3. REMOVE AND PREPARE NEW WORK FOR STEAM ISOLATION VALVE.
4. COORDINATE SCHEDULING ALL WORK WITH THE OWNER TO ISOLATE AND PREPARE FUEL GAS PIPING FOR THE DEMOLITION WORK. DISCONNECT AND REMOVE PIPING AS SHOWN. PREPARE REMAINING PIPING FOR NEW WORK.
5. REMOVE EXISTING WALL LOUVER AND PREPARE OPENING FOR NEW WORK.
6. REMOVE EXISTING VACUUM PUMP IN ITS ENTIRETY AND PREPARE FOR NEW WORK.
7. REMOVE EXISTING BOILER BREECHING IN ITS ENTIRETY FOR REMOVED AND EXISTING TO REMAIN BOILER. PREPARE FOR NEW WORK.
8. REMOVE EXISTING FLASH TANK IN ITS ENTIRETY INCLUDING ALL PIPING.
9. LOCATE AND DEMOLISH THE CONDENSATE PUMP AND RECEIVER. DEMOLISH EXISTING PIPING AS NEEDED. PREPARE AREA FOR NEW WORK.

POUGHKEEPSIE CITY SCHOOL DISTRICT
2020 CAPITAL IMPROVEMENT PROJECT
PHASE 1B: BUILDING IMPROVEMENTS
POUGHKEEPSIE HIGH SCHOOL: SED# 13-15-00-01-0-007-018
POUGHKEEPSIE MIDDLE SCHOOL: SED# 13-15-00-01-0-001-5-021
POUGHKEEPSIE ELEMENTARY SCHOOL: SED# 13-15-00-01-0-004-014
KREGER ELEMENTARY SCHOOL: SED# 13-15-00-01-0-004-014
MORSE ELEMENTARY SCHOOL: SED# 13-15-00-01-0-002-014
WARRING ELEMENTARY SCHOOL: SED# 13-15-00-01-0-005-013
WARRING ELEMENTARY SCHOOL: SED# 13-15-00-01-0-005-013
COLUMBUS ELEMENTARY SCHOOL: SED# 13-15-00-01-0-001-014

DATE 10/20/2021 DRAWN BEF CHECKED AJS

SCALE 1/4" = 1'-0"

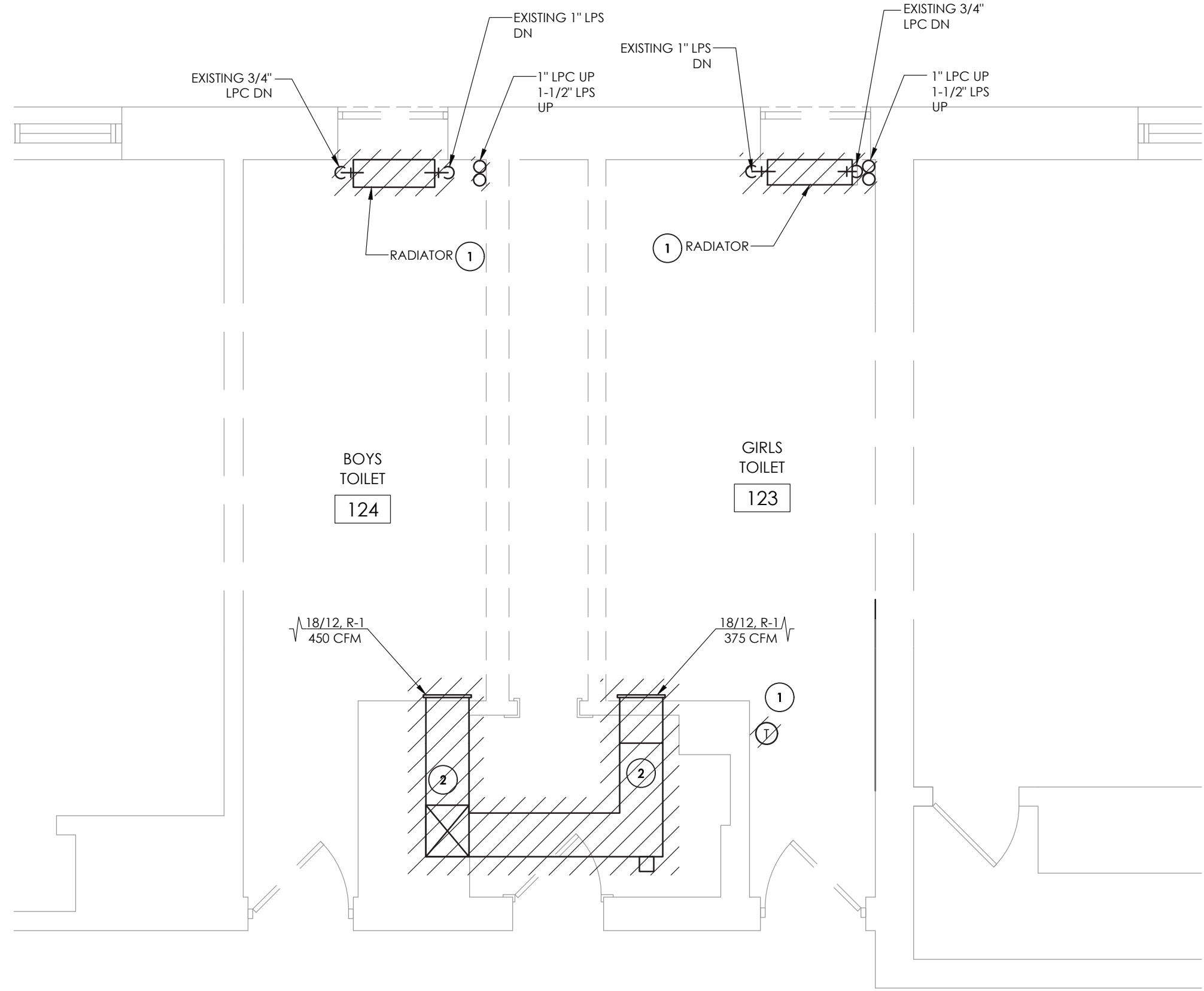
SHEET TITLE
WARRING ELEMENTARY
SCHOOL BOILER
DEMOLITION PLANS

PROJECT NUMBER
14078.09
WES
H100B
DRAWING NUMBER

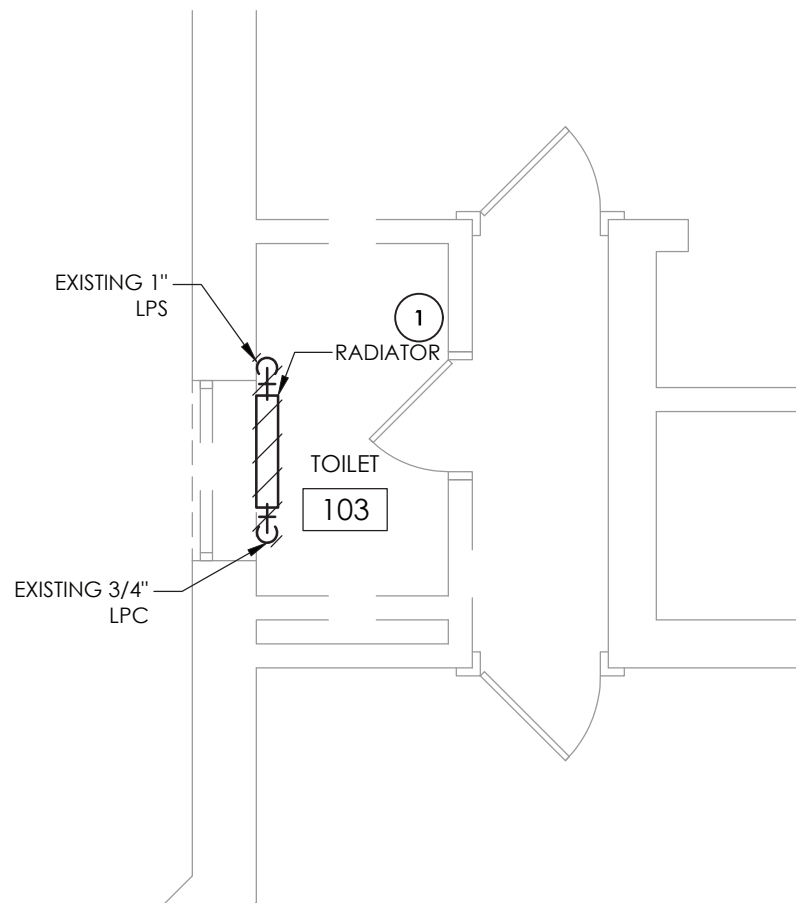
CPLteam.com
ARCHITECTURE • ENGINEERING • PLANNING
50 FRONT STREET, SUITE 202
NEWBURGH, NEW YORK 12550
TEL (800) 274-9000

REVIEWS	NO.	DATE	BY	DESCRIPTION

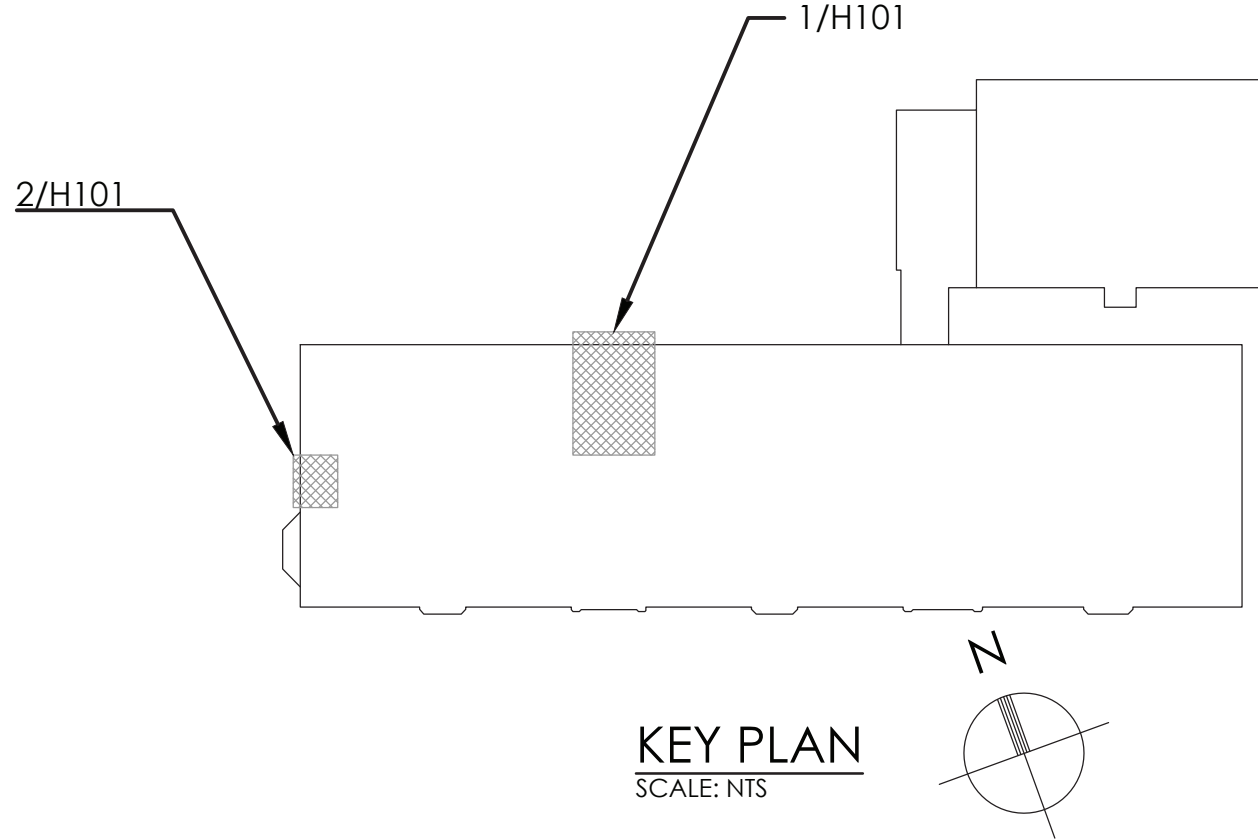




1
H101
TOILET ROOM DEMOLITION PLAN
SCALE: 1/4" = 1'-0"



2
H101
TOILET ROOM DEMOLITION PLAN
SCALE: 1/4" = 1'-0"




KEY PLAN
SCALE: NTS

GENERAL NOTES:

1. FIELD VERIFY EXACT DUCT AND PIPING LOCATIONS AND SIZES PRIOR TO DEMOLITION AND COORDINATE SPECIFIC POINTS OF REMOVAL LOCATIONS BASED ON NEW UNIT DIMENSIONS AND CONFIGURATIONS

KEY NOTES:

- 1 REMOVE EXISTING STEAM RADIATOR IN ITS ENTIRETY INCLUDING ALL PIPING, TRAPS, CONTROLS AND THERMOSTAT. REMOVE PIPING BACK TO MAINS AND PREPARE FOR NEW WORK.
- 2 REMOVE EXISTING EXHAUST GRILLE AND DUCTWORK UP TO EXHAUST FAN. PREPARE FOR NEW WORK.



CPLteam.com
ARCHITECTURE • ENGINEERING • PLANNING

50 FRONT STREET, SUITE 202
NEWBURGH, NEW YORK 12550
TEL (800) 274-9000

REVISIONS		DATE	BY	DESCRIPTION
NO.				

POUGHKEEPSIE CITY SCHOOL DISTRICT
2020 CAPITAL IMPROVEMENT PROJECT
PHASE 1B: BUILDING IMPROVEMENTS

- ☐ POUGHKEEPSIE HIGH SCHOOL: SED# 13-15-00-01-0-007-018
- ☐ POUGHKEEPSIE MIDDLE SCHOOL: SED# 13-15-00-01-0-008-021
- ☐ POUGHKEEPSIE JUNIOR HIGH SCHOOL: SED# 13-15-00-01-0-009-014
- ☐ KREGER ELEMENTARY SCHOOL: SED# 13-15-00-01-0-004-014
- ☐ MORSE ELEMENTARY SCHOOL: SED# 13-15-00-01-0-002-014
- ☐ WARRING ELEMENTARY SCHOOL: SED# 13-15-00-01-0-005-013
- ☐ COLUMBIUS ELEMENTARY SCHOOL: SED# 13-15-00-01-0-001-014

DATE	DRAWN	CHECKED
10/20/2021	BEF	AJS

SCALE: 1/4" = 1'-0"

SHEET TITLE

**WARRING ELEMENTARY
SCHOOL FIRST FLOOR
TOILET ROOM
DEMOLITION PLANS**

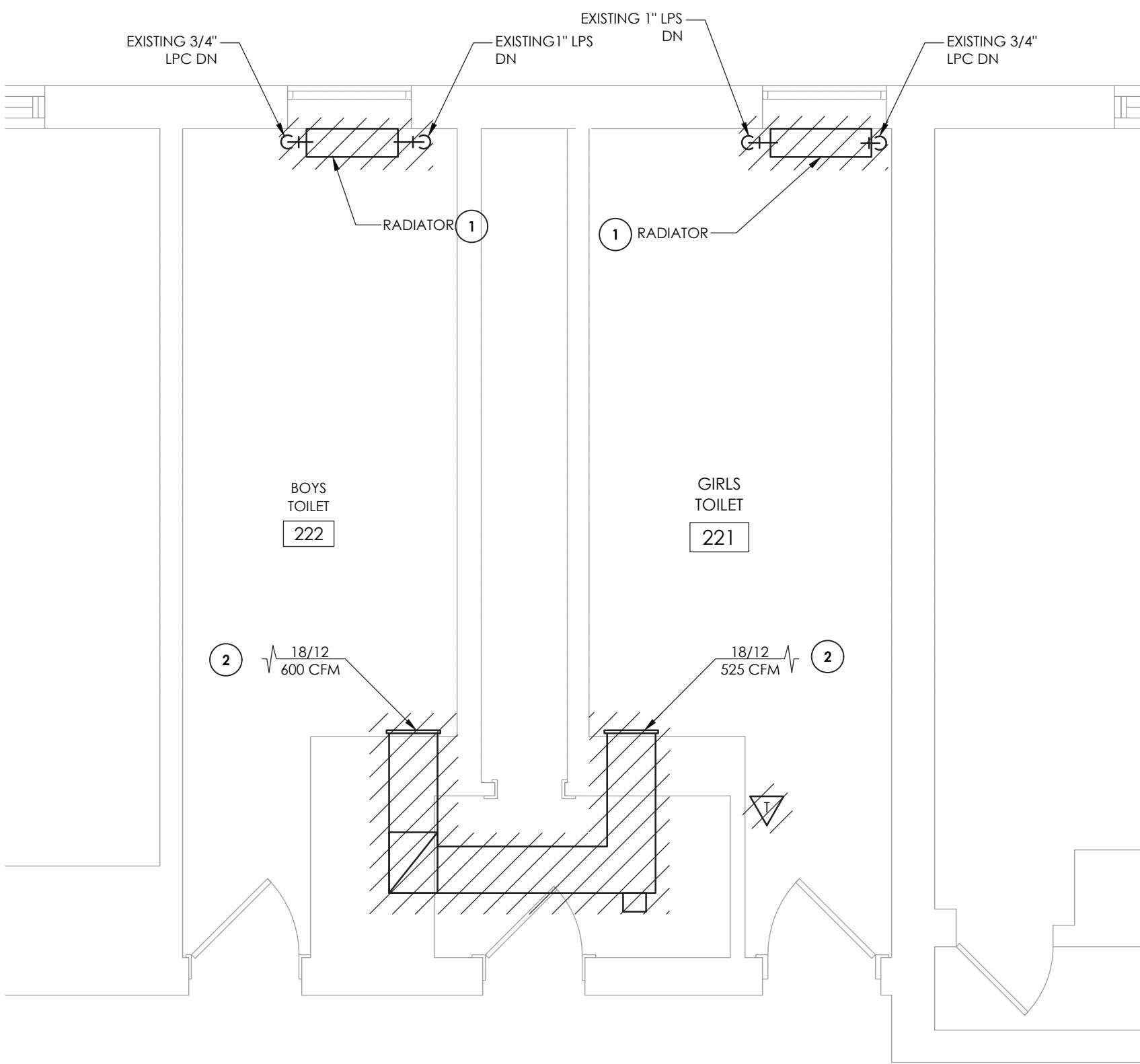
PROJECT NUMBER

14078.09

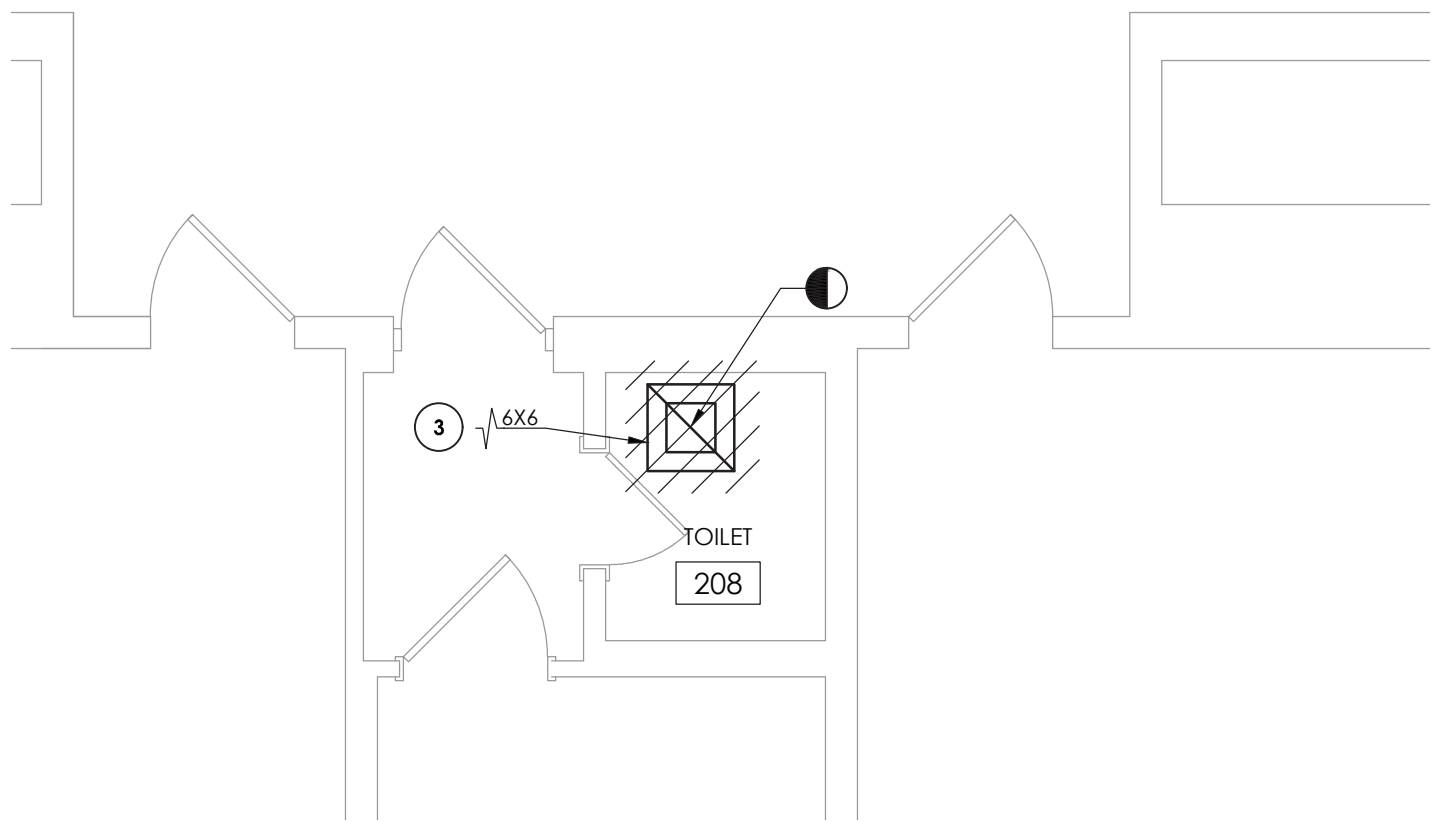
**WES
H101**

DRAWING NUMBER

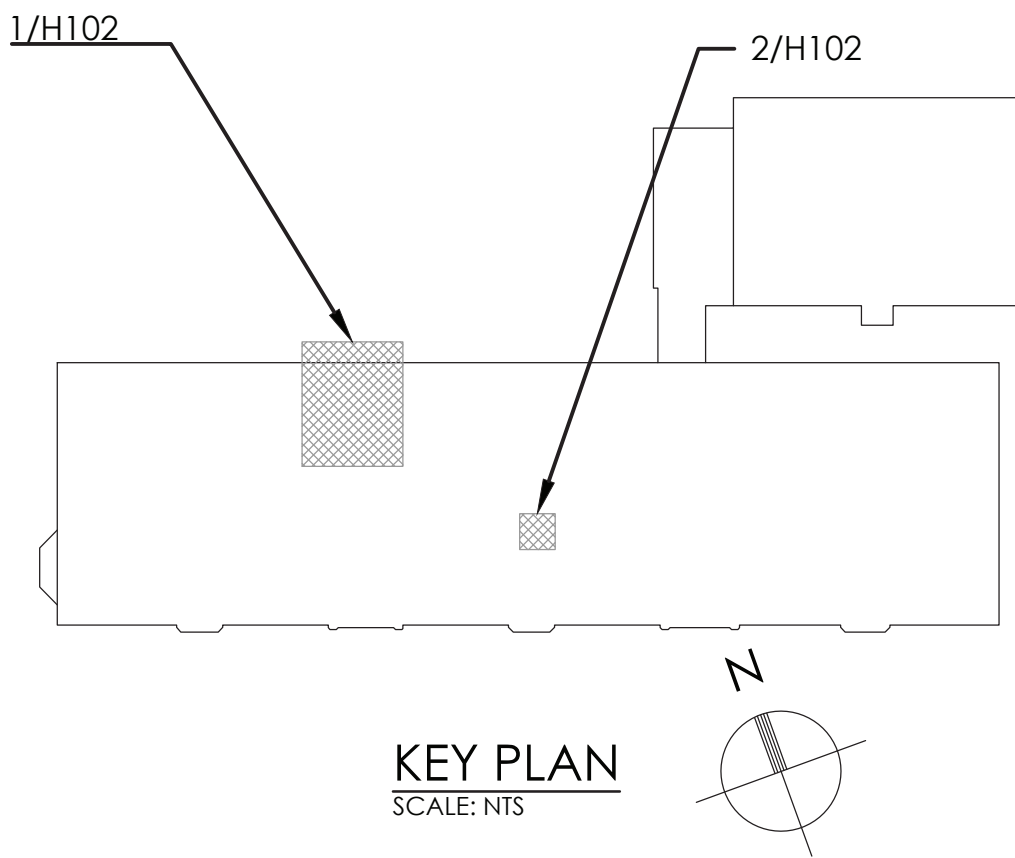
18. AVOIDANCE OF THE NEW YORK STATE EDUCATION LAW AND THE COMMISSIONER'S REGULATIONS FOR ANY PERSON, AND ANY ENTITY UNDER THE DIRECTION OF A LICENSED ARCHITECT, ENGINEER OR LAND SURVEYOR, TO ALTER AN EXISTING ANY WAY, FOR THE PURPOSE OF PASSING THE SEAL OF AN ARCHITECT, ENGINEER OR SURVEYOR TO ANY OTHER PARTY SHALL APPLY TO THE RELEVANT AREA, AND THE INDICATED ALTERATIONS BY THEIR SIGNATURE AND THE DATE OF SIGNATURE, AND A SPECIFIC DESCRIPTION OF THE ALTERATION.



1
H102
TOILET ROOM 4 DEMOLITION PLAN
SCALE: 1/4" = 1'-0"



2
H102
TOILET ROOM 5 DEMOLITION PLAN
SCALE: 1/4" = 1'-0"



- GENERAL NOTES:**
1. FIELD VERIFY EXACT DUCT AND PIPING LOCATIONS AND SIZES PRIOR TO DEMOLITION AND COORDINATE SPECIFIC POINTS OF REMOVAL LOCATIONS BASED ON NEW UNIT DIMENSIONS AND CONFIGURATIONS
- KEY NOTES:**
- 1 REMOVE EXISTING STEAM RADIATOR IN ITS ENTIRETY INCLUDING ALL PIPING, TRAPS, CONTROLS AND THERMOSTAT. REMOVE PIPING BACK TO MAINS AND PREPARE FOR NEW WORK.
 - 2 REMOVE EXISTING EXHAUST GRILLE AND DUCTWORK IN ITS ENTIRETY. PREPARE FOR NEW WORK.
 - 3 REMOVE EXISTING RE-CIRCULATING BATHROOM EXHAUST FAN IN ITS ENTIRETY. PREPARE FOR NEW WORK.


ARCHITECTURE • ENGINEERING • PLANNING
50 FRONT STREET, SUITE 202
NEWBURGH, NEW YORK 12550
TEL (800) 274-9000

REVISIONS	DESCRIPTION		
	NO.	DATE	BY

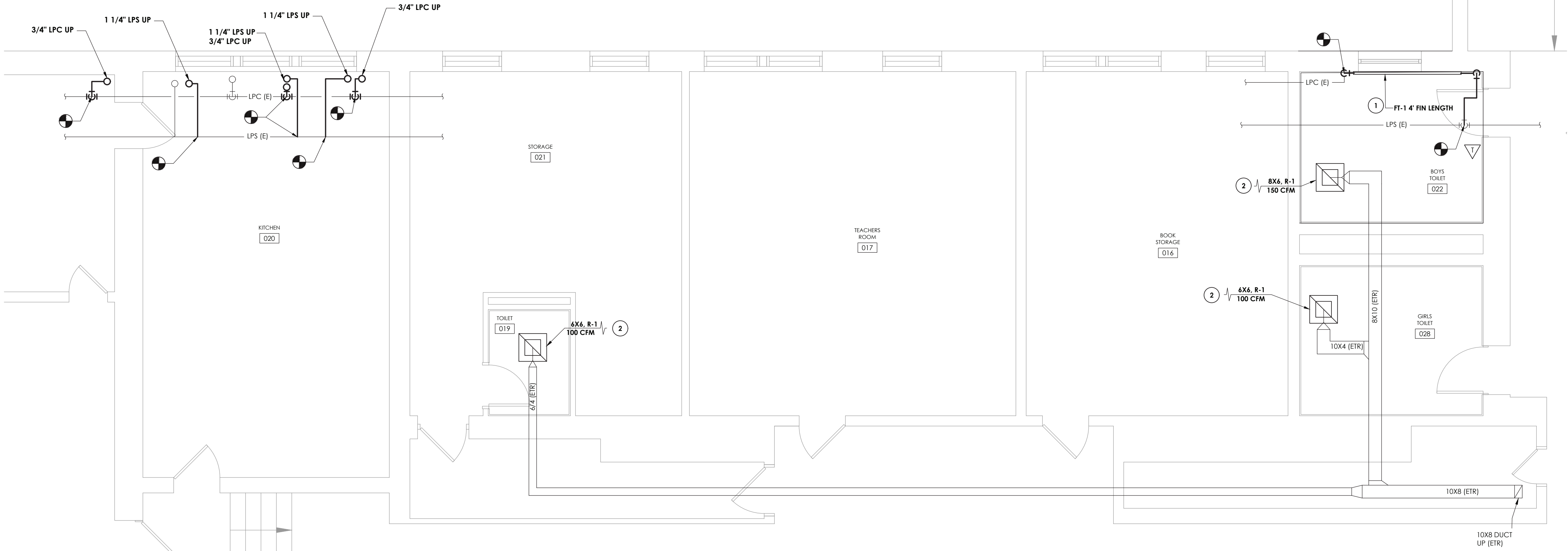


POUGHKEEPSIE CITY SCHOOL DISTRICT
2020 CAPITAL IMPROVEMENT PROJECT
PHASE 1B: BUILDING IMPROVEMENTS

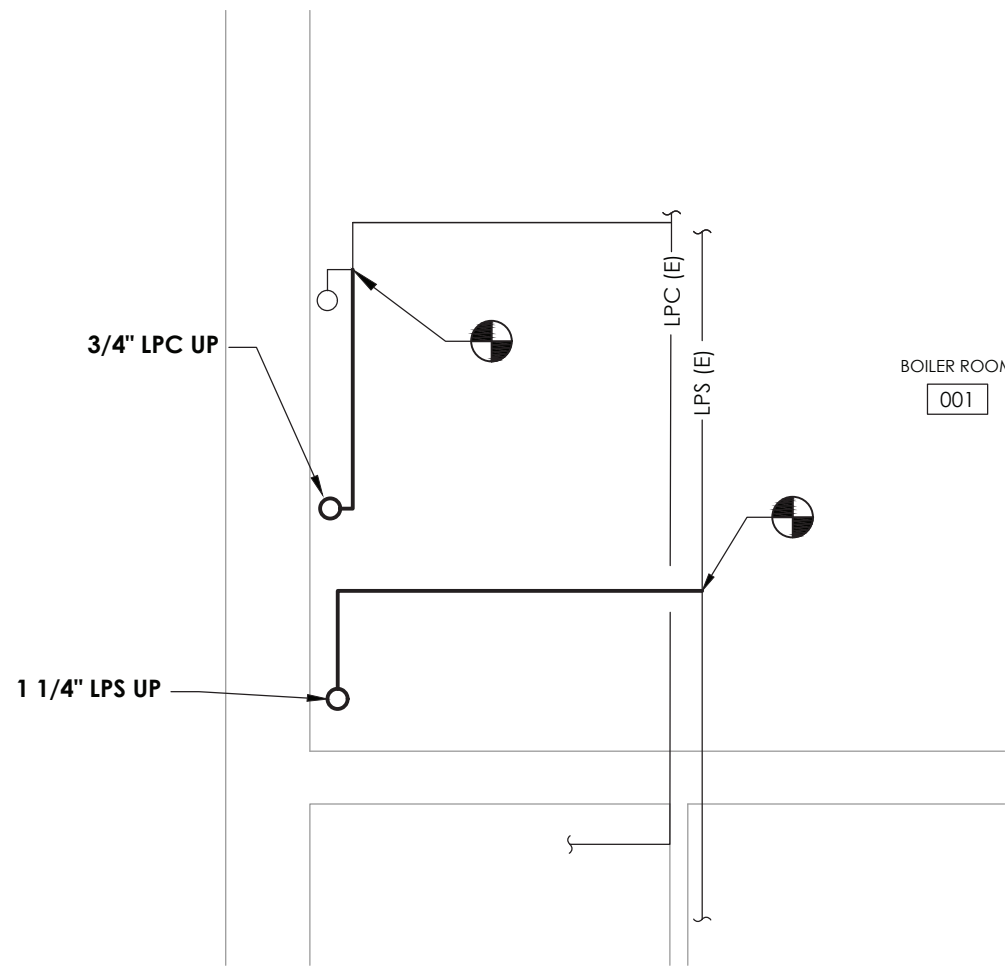
- ☐ POUGHKEEPSIE HIGH SCHOOL: SED# 13-15-00-01-0-007-018
- ☐ POUGHKEEPSIE MIDDLE SCHOOL: SED# 13-15-00-01-0-008-021
- ☐ POUGHKEEPSIE ELEMENTARY SCHOOL: SED# 13-15-00-01-0-009-014
- ☐ KREGER ELEMENTARY SCHOOL: SED# 13-15-00-01-0-004-014
- ☐ MORSE ELEMENTARY SCHOOL: SED# 13-15-00-01-0-002-014
- ☐ WARRING ELEMENTARY SCHOOL: SED# 13-15-00-01-0-005-013
- ☐ WARRING ELEMENTARY SCHOOL: SED# 13-15-00-01-0-006-014
- ☐ COLUMBIUS ELEMENTARY SCHOOL: SED# 13-15-00-01-0-001-014

DATE	DRAWN	CHECKED
10/20/2021	BEF	AJS
SCALE: 1/4" = 1'-0"		
SHEET TITLE WARRING ELEMENTARY SCHOOL SECOND FLOOR TOILET ROOMS DEMOLITION PLANS		

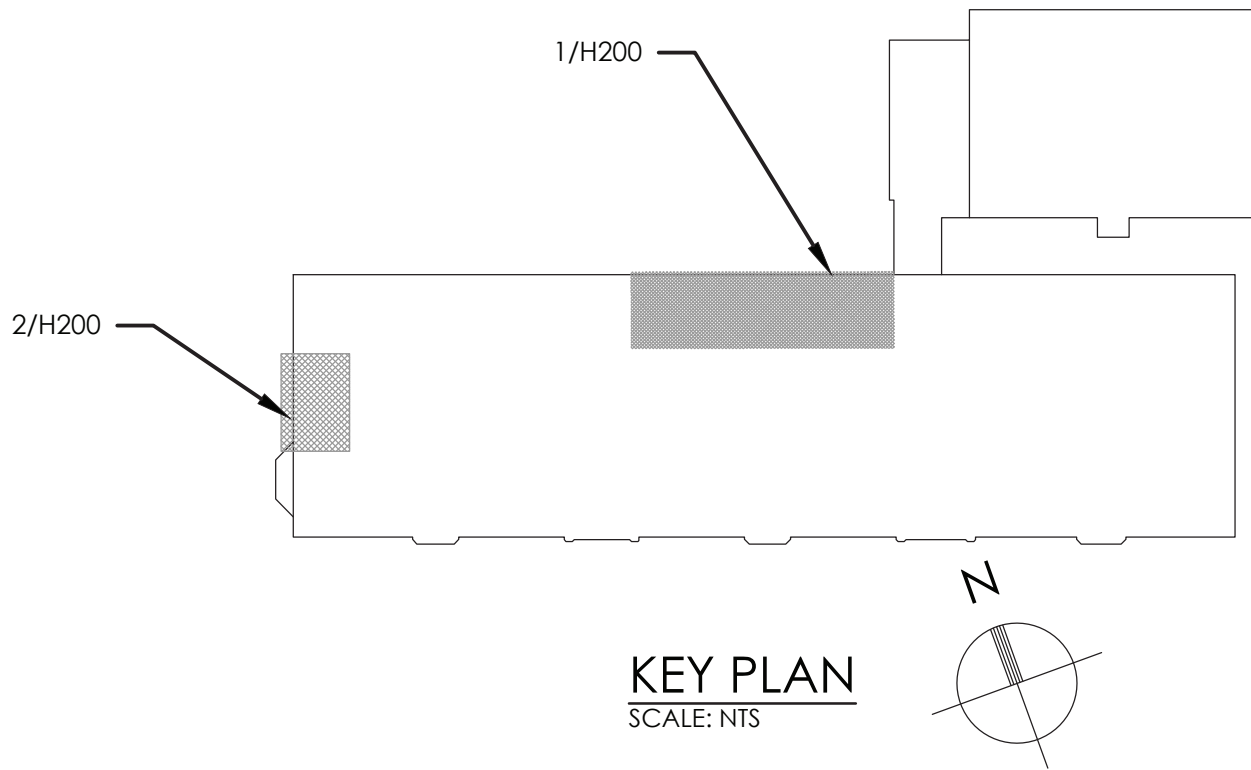
PROJECT NUMBER
14078.09
WES
H102
DRAWING NUMBER



1 TOILET ROOM NEW WORK PLAN
SCALE: 1/4" = 1'-0"



2 STEAM & CONDENSATE PIPING NEW WORK PLAN
SCALE: 1/4" = 1'-0"




GENERAL NOTE:

1. ALL CONTROLS WORK SHALL BE PERFORMED BY TECHNICAL BUILDING SERVICES, INC.
CONTACT: ED ROCKSTROH
(P): (518) 885-4444
(E): edrockstroh@tbscontrols.com

KEY NOTES:

1. CONTRACTOR SHALL PROVIDE AND INSTALL NEW WALL FIN TUBE INCLUDING, CONTROL VALVES, CONTROLS AND THERMOSTAT.
2. INSTALL NEW GRILLE IN LOCATION OF REMOVED GRILLE. RECONNECT GRILLE TO EXISTING DUCTWORK. MODIFY EXISTING DUCTWORK AS NECESSARY FOR RECONNECTION.



50 FRONT STREET, SUITE 202
NEWBURGH, NEW YORK 12550
TEL (800) 274-9000

REVISIONS		DESCRIPTION	
NO.	DATE	BY	

POUGHKEEPSIE CITY SCHOOL DISTRICT
2020 CAPITAL IMPROVEMENT PROJECT
PHASE 1B: BUILDING IMPROVEMENTS

- ☐ POUGHKEEPSIE HIGH SCHOOL: SED# 13-15-00-01-0-007-018
- ☐ POUGHKEEPSIE MIDDLE SCHOOL: SED# 13-15-00-01-0-008-021
- ☐ POUGHKEEPSIE ELEMENTARY SCHOOL: SED# 13-15-00-01-0-009-014
- ☐ KREGER ELEMENTARY SCHOOL: SED# 13-15-00-01-0-009-014
- ☐ MORSE ELEMENTARY SCHOOL: SED# 13-15-00-01-0-009-014
- ☐ WARRING ELEMENTARY SCHOOL: SED# 13-15-00-01-0-009-013
- ☐ WARRING ELEMENTARY SCHOOL: SED# 13-15-00-01-0-009-013
- ☐ COLUMBIUS ELEMENTARY SCHOOL: SED# 13-15-00-01-0-001-014

THIS DOCUMENT IS THE PROPERTY OF TECHNICAL BUILDING SERVICES, INC. AND IS NOT TO BE REPRODUCED OR TRANSMITTED IN ANY FORM OR BY ANY MEANS, ELECTRONIC OR MECHANICAL, WITHOUT PERMISSION IN WRITING FROM TECHNICAL BUILDING SERVICES, INC. THE USER OF THIS DOCUMENT AGREES TO HOLD TECHNICAL BUILDING SERVICES, INC. HARMLESS FROM AND AGAINST ALL LIABILITY, INCLUDING REASONABLE ATTORNEY'S FEES, FOR ANY AND ALL DAMAGES, LOSSES AND EXPENSES, INCLUDING REASONABLE ATTORNEY'S FEES, THAT MAY BE INCURRED BY THE USER OF THIS DOCUMENT, WHETHER OR NOT SUCH DAMAGES, LOSSES AND EXPENSES WERE CAUSED IN WHOLE OR IN PART BY THE NEGLIGENCE OF TECHNICAL BUILDING SERVICES, INC. OR ITS EMPLOYEES, AGENTS OR SUBCONTRACTORS.

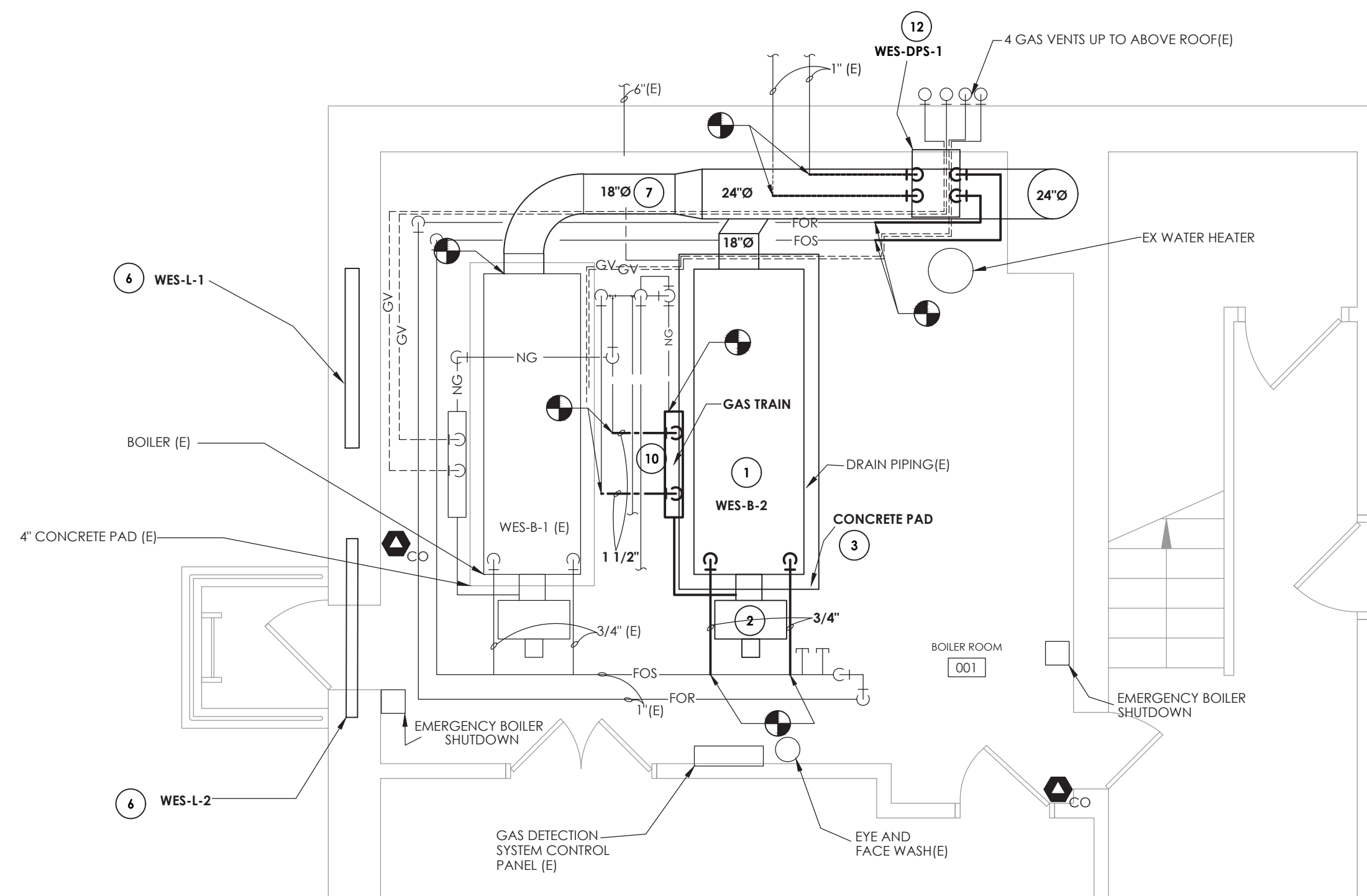
DATE	DRAWN	CHECKED
10/20/2021	BEF	AJS

SCALE: 1/4" = 1'-0"

SHEET TITLE
WARRING ELEMENTARY
SCHOOL BASEMENT
TOILET ROOMS
NEW WORK PLANS

PROJECT NUMBER
14078.09

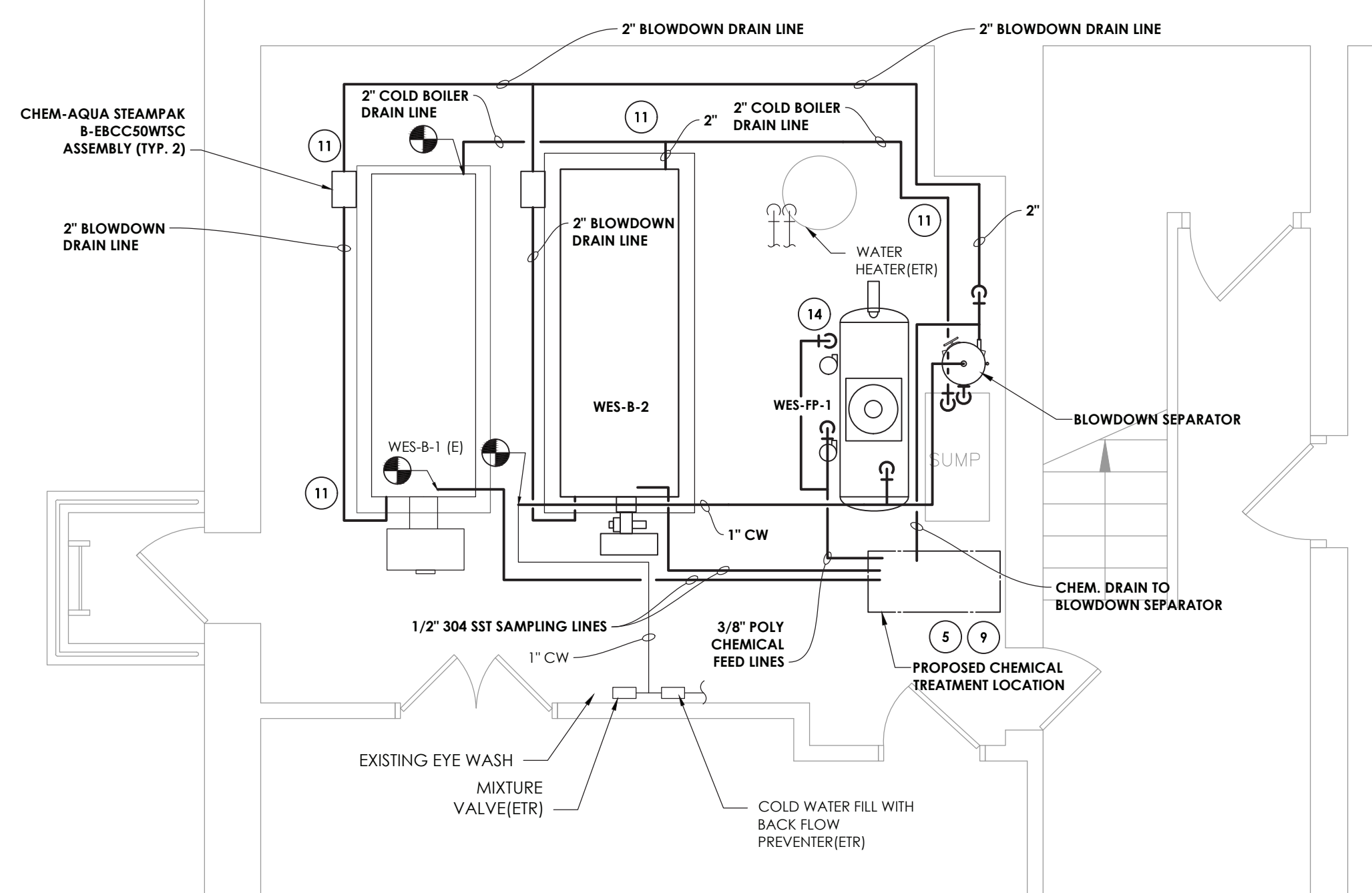
WES
H200A
DRAWING NUMBER



1
H200B

NATURAL GAS AND OIL NEW WORK PLAN

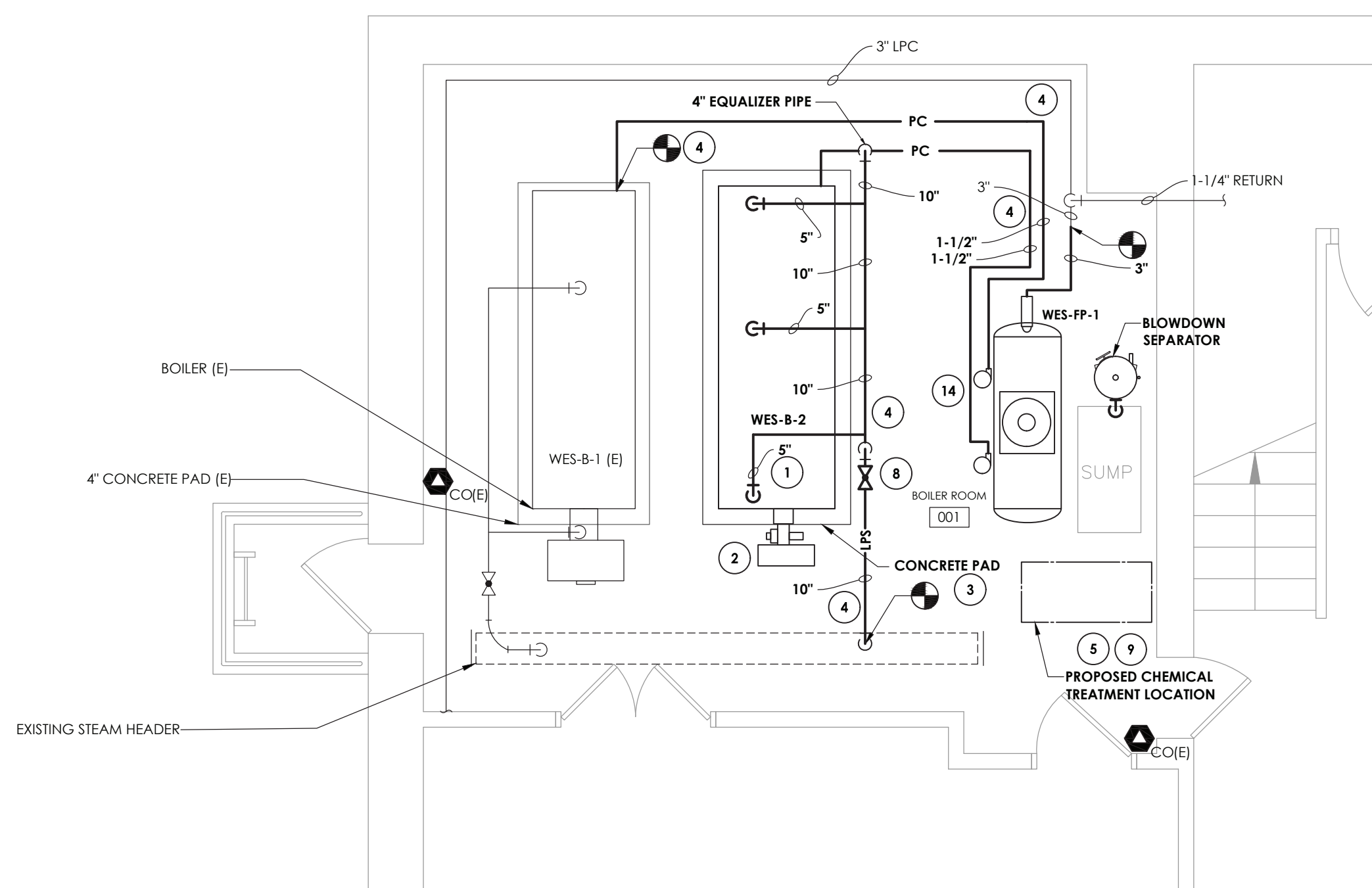
SCALE: 1/4" = 1'-0"



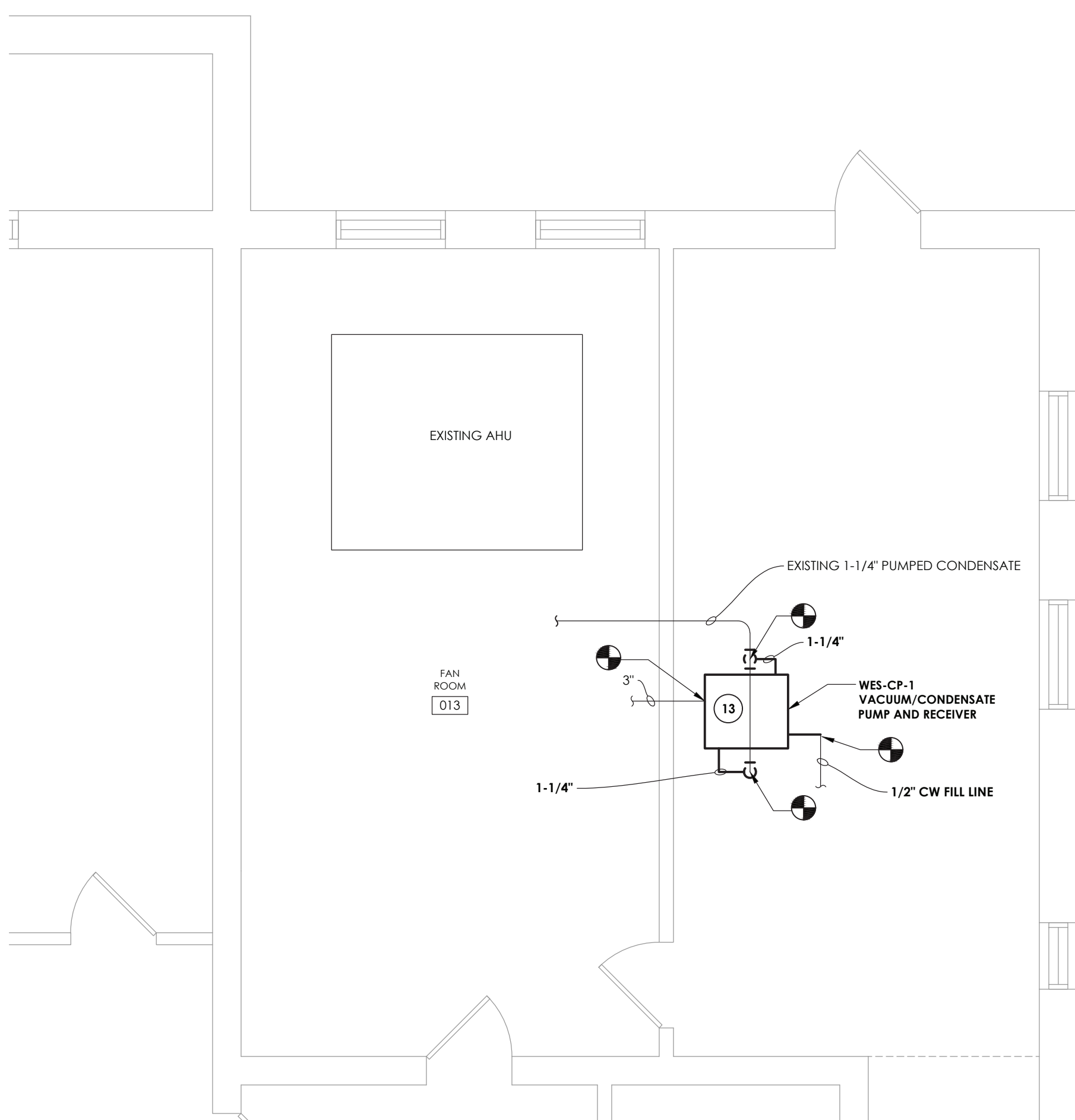
3
H200B

DRAIN, CHEMICAL AND MAKE-UP WATER NEW WORK PLAN

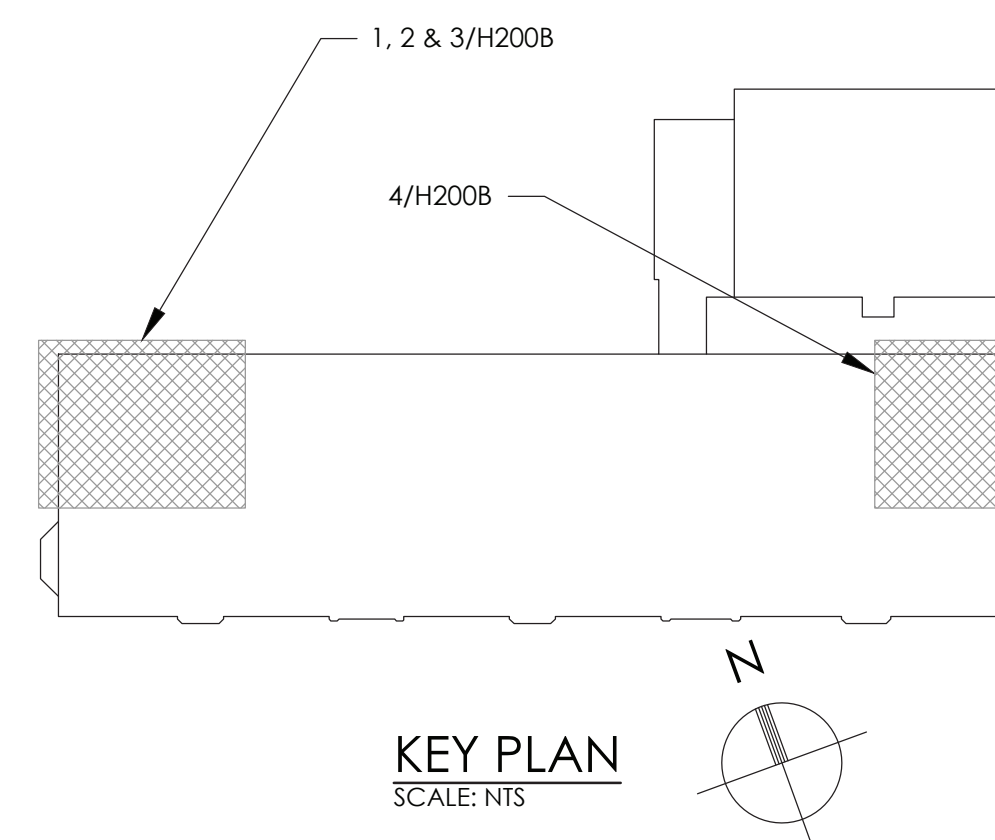
SCALE: 1/4" = 1'-0"



2 STEAM AND LOW PRESSURE CONDENSATE NEW WORK PLAN
H200B SCALE: 1/4" = 1'-0"



4 STEAM AND LOW PRESSURE CONDENSATE NEW WORK PLAN
H200B SCALE: 1/4" = 1'-0"



KEY NOTES:

1. CONTRACTOR SHALL PROVIDE AND INSTALL NEW DUAL FUEL BOILER INCLUSIVE OF NEW TRIM, BOILER LEVEL CONTROLS, AND SAFETIES AS REQUIRED BY CODE AND LOCAL AUTHORITIES HAVING JURISDICTION. CONTRACTOR SHALL ENGAGE A FACTORY AUTHORIZED TECHNICIAN TO EXECUTE AND DOCUMENT ALL MANUFACTURERS SUGGESTED START UP AND COMMISSIONING TESTING INCLUDING THE BOILER, FUEL SYSTEMS, AND ALL RELATED CONTROL SYSTEMS.
2. PROVIDE A NEW DUAL FUEL MODULATING BURNER SYSTEM INCLUDING AIR DENSITY BURNER MANAGEMENT SYSTEM, AND ANNUNCIATION SYSTEM.
3. INSTALL CONCRETE HOUSEKEEPING PAD PER PLANS TO ACCOMMODATE THE NEW BOILER. PROVIDE NEOPRENE VIBRATION ISOLATION PAD AT BOILER BASE MOUNTING POINTS.
4. PROVIDE AND INSTALL NEW PIPING, HANGERS, SUPPORTS, ACCESSORIES, AND FIBERGLASS INSULATION ACCORDING TO PLANS AND POINTS OF CONNECTION. REFER TO DETAILS AND SCHEDULES. MANUFACTURED FITTINGS SHALL BE INSTALLED ACCORDING TO THE MANUFACTURERS REQUIREMENTS AND TOLERANCES.
5. CONTRACTORS SHALL ENGAGE A LOCAL SUPPLIER AND INSTALL NEW BOILER FUEL WATER CHEMICAL TREATMENT SYSTEMS.
6. CONTRACTOR SHALL PROVIDE AND INSTALL WALL LOUVER. CONTRACTOR SHALL FIELD VERIFY AND COORDINATE WITH FIELD CONDITIONS. BALANCE ACCORDING TO SPECIFICATIONS.
7. PROVIDE NEW BOILER BREECHING FOR BOTH NEW AND EXISTING BOILERS. PROVIDE MONOTHIC REFRACTORY CHIMNEY LINER THROUGH EXISTING CHIMNEY.
8. INSTALL ISOLATION VALVES. VALVES SHALL MEET ORIGINAL MANUFACTURING TOLERANCES AND RESTORED TO NEW CONDITION OR BE REPLACED WITH NEW VALVE ASSEMBLY.
9. COORDINATE WITH NEW CHEMICAL TREATMENT SYSTEM. RECONNECT BOILER FUEL WATER PIPING TO NEW BOILERS PER MANUFACTURING REQUIREMENTS INCLUDING ALL NEW SAFETY AND CONTROLS DEVICES AND CONNECTIONS AS REQUIRED FOR A FULLY FUNCTIONAL AND COMPLIANT SYSTEM. CONTRACTOR SHALL START UP AND COMMISSION BOILER FUEL SYSTEM.
10. PROVIDE AND INSTALL NEW FUEL GAS PIPING FROM 6" MAIN INCLUDING GAS TRAIN. CONNECT AS REQUIRED TO EQUIPMENT. REFER TO DETAILS.
11. PROVIDE AND INSTALL NEW DRAIN PIPING AND CONNECTION TO EXISTING FLOOR DRAIN.
12. PROVIDE AND INSTALL FUEL OIL FUEL PUMP. CONNECT TO EXISTING FUEL OIL SUPPLY SYSTEM. RECONNECT TO EXISTING FUEL OIL SUPPLY AND RETURN PIPING. MODIFY PIPING AS NECESSARY FOR RECONNECTION.
13. PROVIDE AND INSTALL NEW CONDENSATE PUMP. RECONNECT EXISTING CONDENSATE PIPING. MODIFY PIPING AS NECESSARY FOR RECONNECTION.
14. PROVIDE AND INSTALL NEW COMBINATION VACUUM & BOILER FEED PUMP. RECONNECT EXISTING CONDENSATE PIPING. MODIFY PIPING AS NECESSARY FOR RECONNECTION.

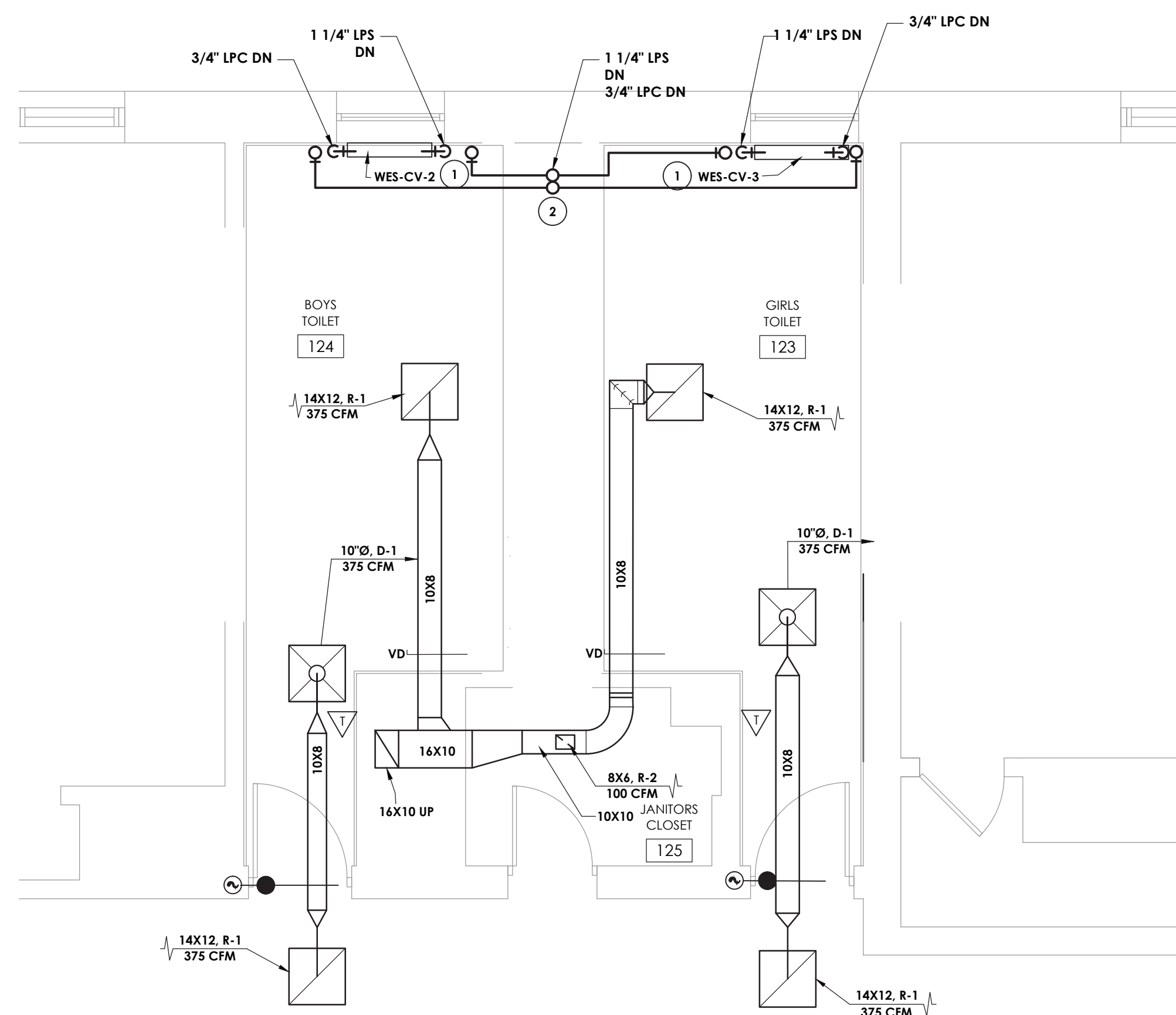
REVISIONS			
NO.	DATE	BY	DESCRIPTION

POUGHKEEPSIE CITY SCHOOL DISTRICT
2020 CAPITAL IMPROVEMENT PROJECT
PHASE 1B: BUILDING IMPROVEMENTS

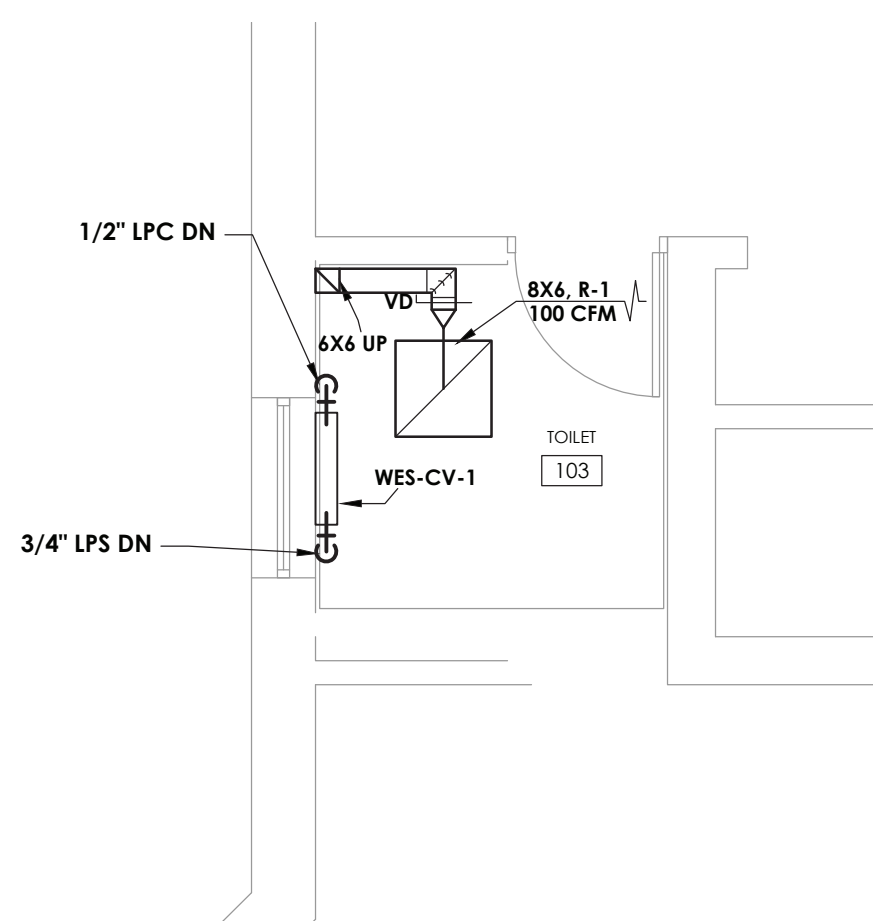
- ☐ POUGHKEEPSIE HIGH SCHOOL: SED# 13-15-00-01-0-007-018
- ☐ POUGHKEEPSIE MIDDLE SCHOOL: SED# 13-15-00-01-0-01-0521
- ☐ CLINTON ELEMENTARY SCHOOL: SED# 13-15-00-01-0-004-014
- ☐ KRIEGER ELEMENTARY SCHOOL: SED# 13-15-00-01-0-006-014
- ☐ MORSE ELEMENTARY SCHOOL: SED# 13-15-00-01-0-002-014
- ☐ WARREN ELEMENTARY SCHOOL: SED# 13-15-00-01-0-005-013
- ☐ SMITH EARLY LEARNING CENTER: SED# 13-15-00-01-0-008-022
- ☐ COLUMBUS ELEMENTARY SCHOOL: SED# 13-15-00-01-0-001-014

DATE 10/20/2021	DRAWN BEF	CHECKED AJS
SCALE 1/4" = 1'-0"		
SHEET TITLE WARRING ELEMENTARY SCHOOL BOILER ROOM NEW WORK PLANS		

The logo for the Western Highway 200B project. It features a large 'W' and 'H' with 'ES' and '200B' respectively, separated by a horizontal line. Above the logo is a box containing 'PROJECT NUMBER' and '14078.09'. Below the logo is a box containing 'DRAWING NUMBER'.



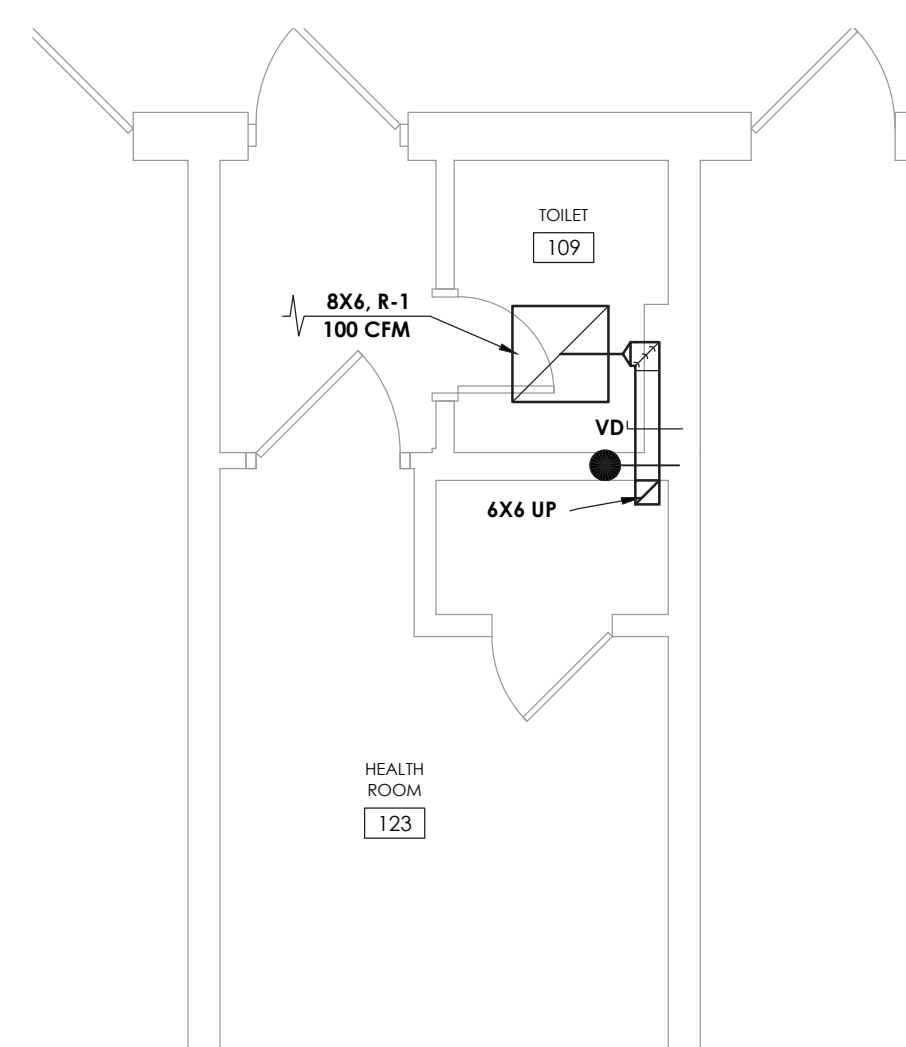
TOILET ROOM NEW WORK PLAN



3
H201

TOILET ROOM 103 NEW WORK PLAN

SCALE: 1/4" = 1'-0"



2
H201

TOILET ROOM NEW WORK PLAN

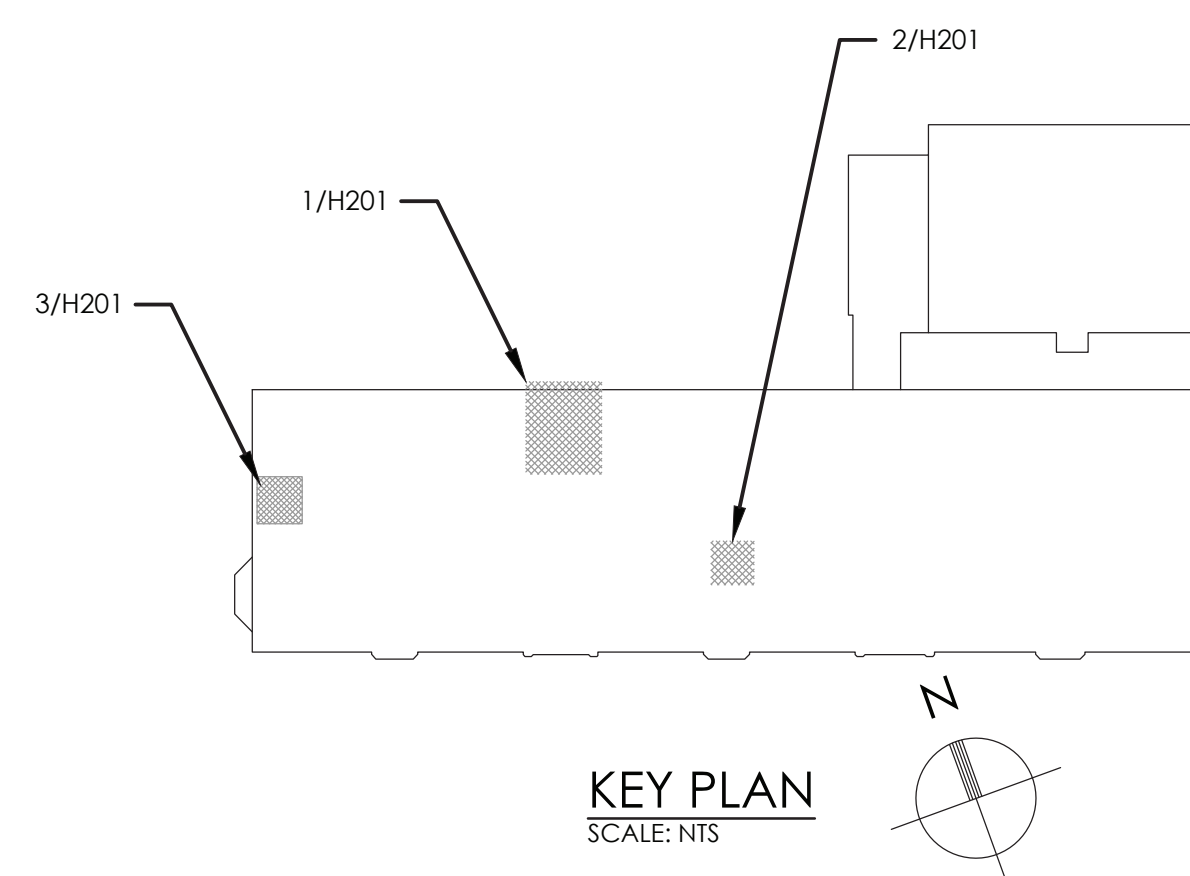
SCALE: 1/4" = 1'-0"

GENERAL NOTE:

1. ALL CONTROLS WORK SHALL BE PREFORMED BY TECHNICAL
BUILDING SERVICES, INC.
CONTACT: ED ROCKSTROH
(P): (518) 885-4444
(E): edrockstroh@tbscontrols.com

KEY NOTES:

- ① CONTRACTOR SHALL PROVIDE NEW WALL MOUNTED CONVECTORS INCLUDING, CONTROL VALVES, CONTROLS AND THERMOSTAT.
- ② RUN PIPE ABOVE FINISHED CEILING UP TO SECOND FLOOR.

[illegible]

**POUGHKEEPSIE CITY SCHOOL DISTRICT
2020 CAPITAL IMPROVEMENT PROJECT
PHASE 1B: BUILDING IMPROVEMENTS**

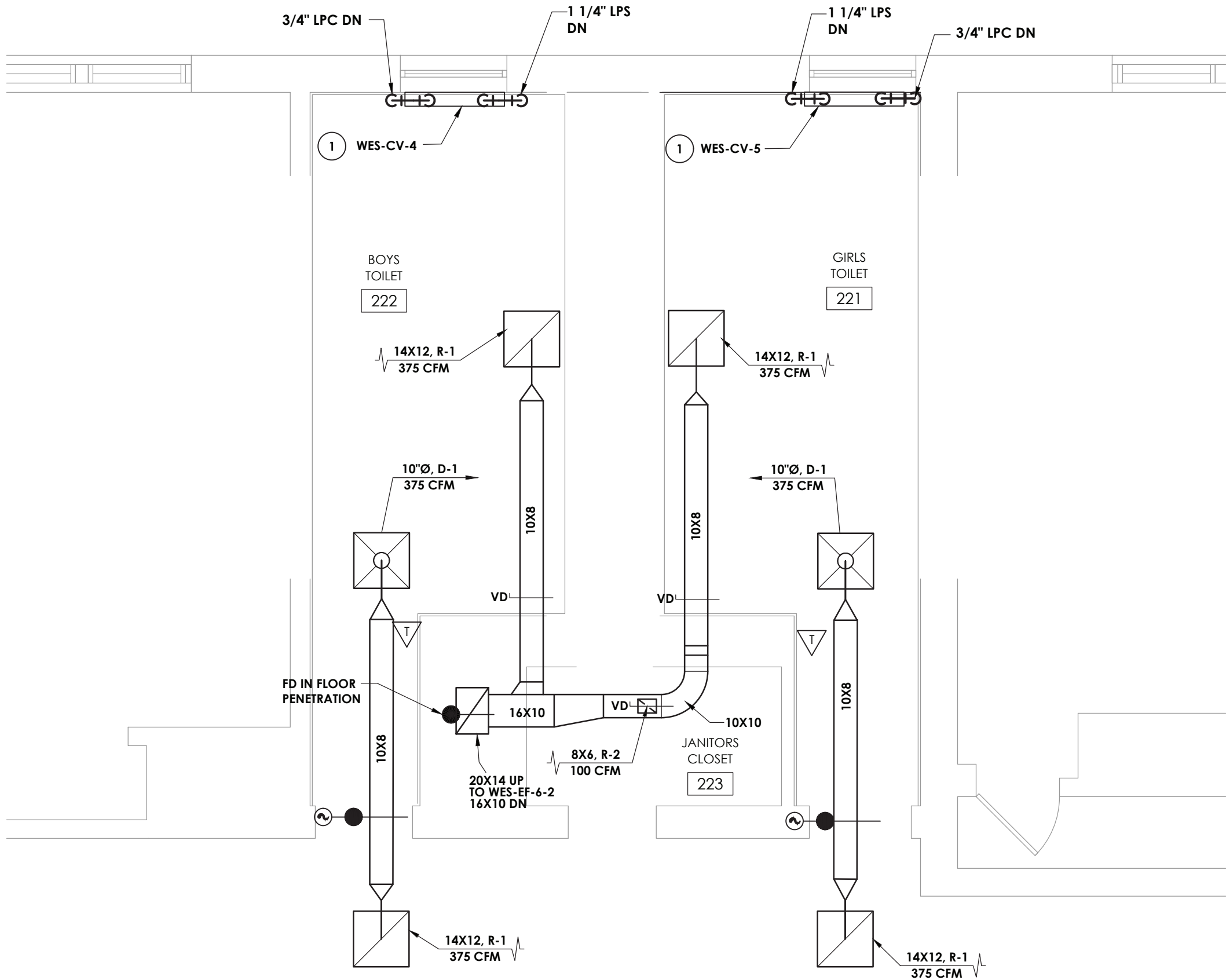
☐ Poughkeepsie High School, SEDP: 13-15-0001-0-0007-018
☐ Poughkeepsie High School, SEDP: 13-15-0001-0-0007-018
☐ Clinton Elementary School, SEDP: 13-15-0001-0-0004-014
☐ Clinton Elementary School, SEDP: 13-15-0001-0-0004-014
☐ Krieger Elementary School, SEDP: 13-15-0001-0-0006-014
☐ Morse Elementary School, SEDP: 13-15-0001-0-0002-014
☐ Morse Elementary School, SEDP: 13-15-0001-0-0002-014
☐ Smith Early Learning Center, SEDP: 13-15-0001-0-0008-022
☐ Columbus Elementary School, SEDP: 13-15-0001-0-0008-014

DATE 10/20/2021	DRAWN BEF	CHECKED AJS
SCALE 1/4" = 1'-0"		
SHEET TITLE WARRING ELEMENTARY SCHOOL FIRST FLOOR TOILET ROOM NEW WORK PLANS		

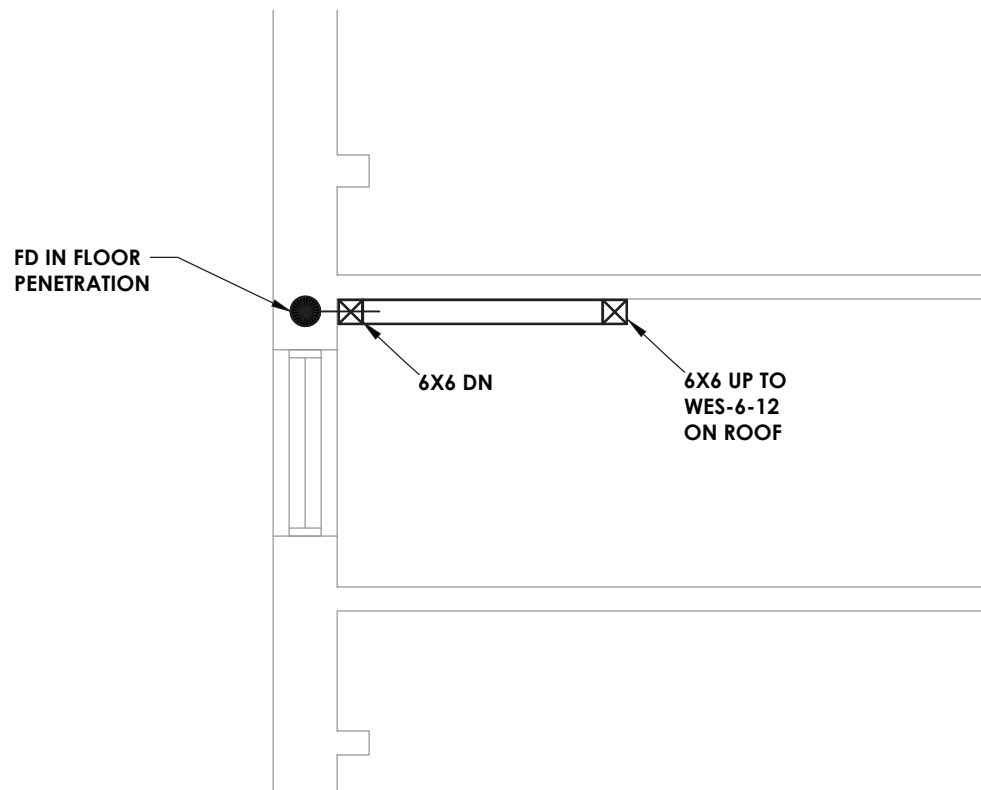
PROJECT NUMBER
14078.09

WES
H201

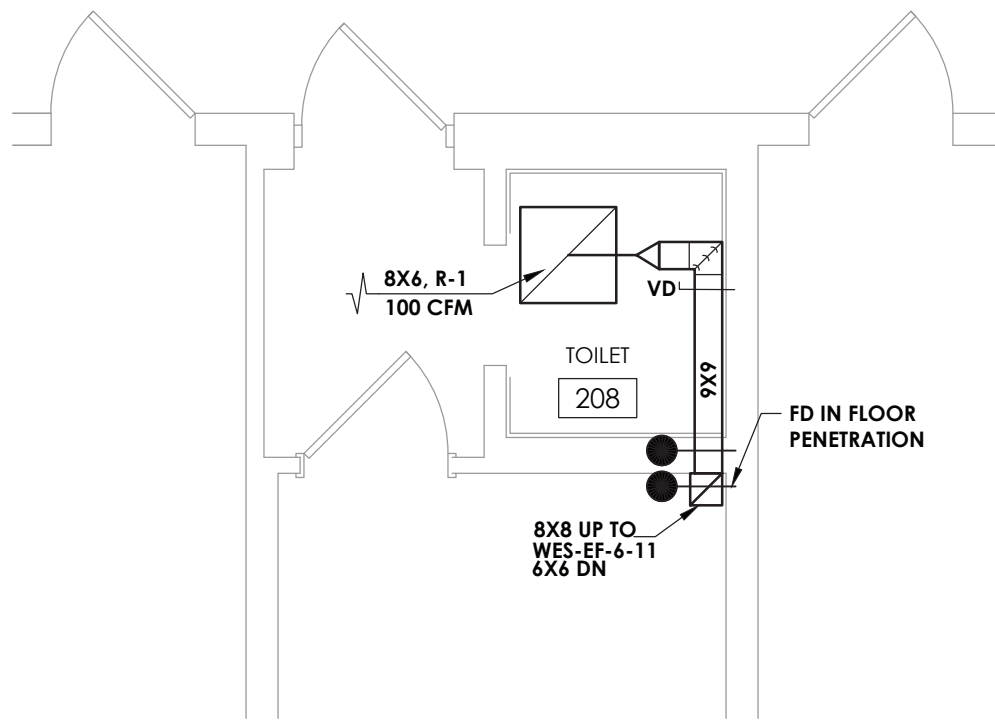
DRAWING NUMBER



1
H202
TOILET ROOM NEW WORK PLAN
SCALE: 1/4" = 1'-0"



3
H202
STORAGE ROOM 213 NEW WORK PLAN
SCALE: 1/4" = 1'-0"



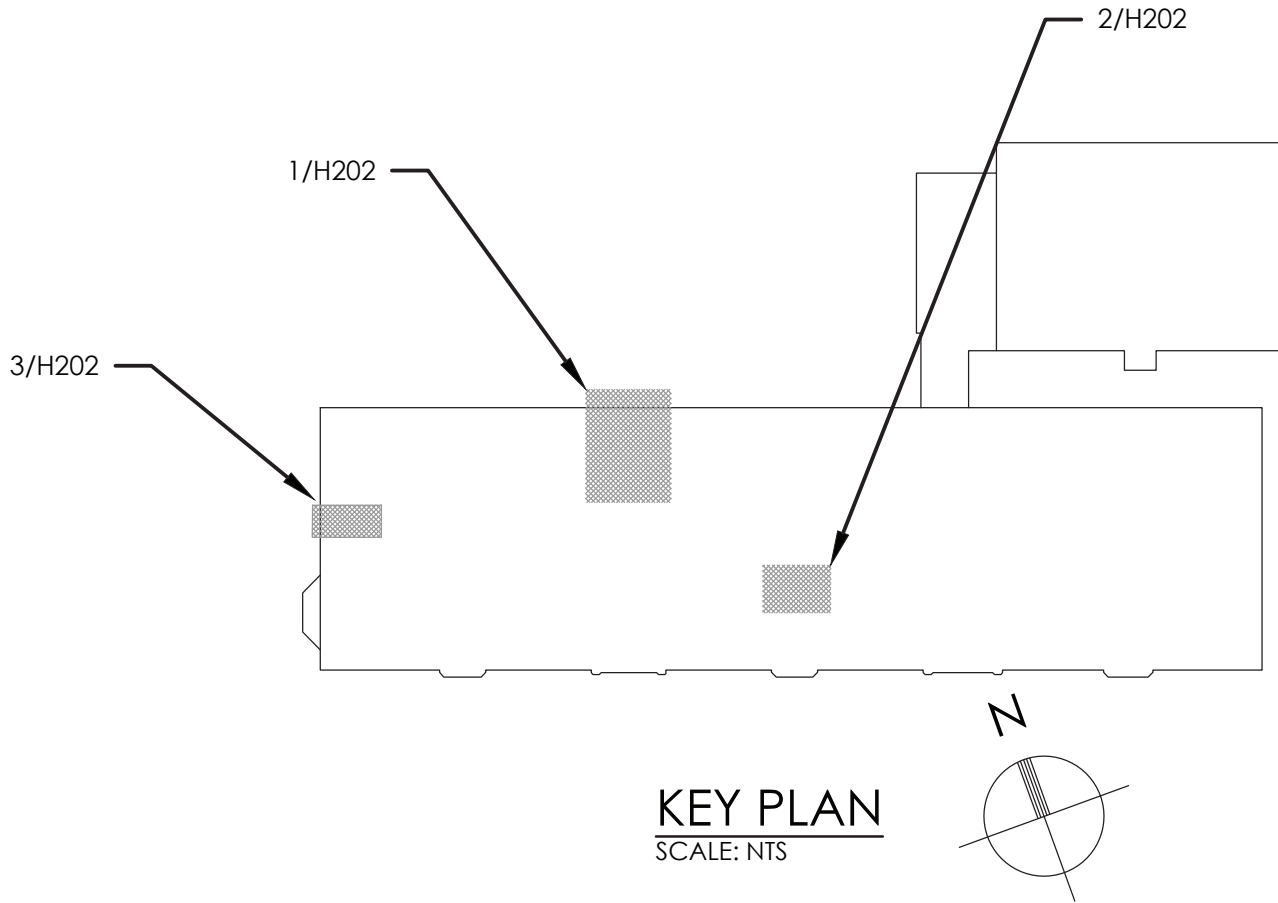
2
H202
TOILET ROOM NEW WORK PLAN
SCALE: 1/4" = 1'-0"

GENERAL NOTE:

1. ALL CONTROLS WORK SHALL BE PERFORMED BY TECHNICAL BUILDING SERVICES, INC.
CONTACT: ED ROCKSTROH
(P): (518) 885-4444
(E): edrockstroh@tbscontrols.com

KEY NOTES:

1. CONTRACTOR SHALL PROVIDE NEW WALL MOUNTED CONVECTORS INCLUDING, CONTROL VALVES, CONTROLS AND THERMOSTAT. SEE SCHEDULE.



CPLteam.com
ARCHITECTURE • ENGINEERING • PLANNING

50 FRONT STREET, SUITE 202
NEWBURGH, NEW YORK 12550
TEL (800) 274-9000

REVISIONS	DESCRIPTION	
	NO.	DATE



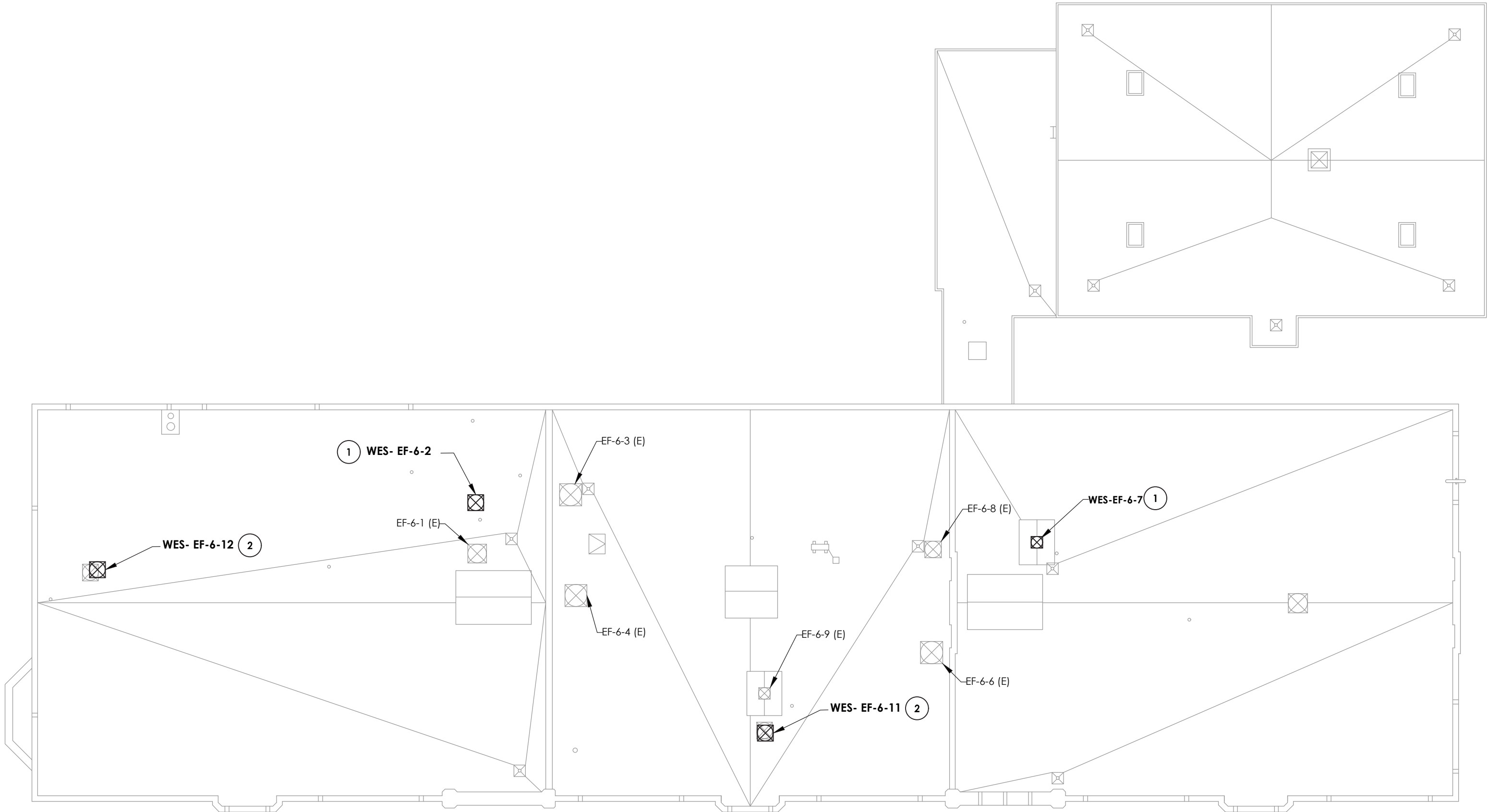
POUGHKEEPSIE CITY SCHOOL DISTRICT
2020 CAPITAL IMPROVEMENT PROJECT
PHASE 1B: BUILDING IMPROVEMENTS

- ☐ POUGHKEEPSIE HIGH SCHOOL: SED# 13-15-00-01-0-007-018
- ☐ POUGHKEEPSIE MIDDLE SCHOOL: SED# 13-15-00-01-0-008-021
- ☐ POUGHKEEPSIE JUNIOR HIGH SCHOOL: SED# 13-15-00-01-0-009-014
- ☐ KREGER ELEMENTARY SCHOOL: SED# 13-15-00-01-0-004-014
- ☐ MORSE ELEMENTARY SCHOOL: SED# 13-15-00-01-0-002-014
- ☐ WARRING ELEMENTARY SCHOOL: SED# 13-15-00-01-0-005-013
- ☐ WARRING ELEMENTARY SCHOOL: SED# 13-15-00-01-0-006-014
- ☐ COLUMBIUS ELEMENTARY SCHOOL: SED# 13-15-00-01-0-001-014

DATE	DRAWN	CHECKED
10/20/2021	BEF	AJS
SCALE: 1/4" = 1'-0"		
SHEET TITLE		
WARRING ELEMENTARY SCHOOL SECOND FLOOR TOILET ROOMS NEW WORK PLANS		

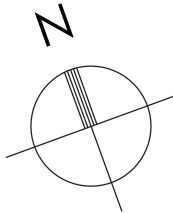
PROJECT NUMBER
14078.09

WES
H202
DRAWING NUMBER



1
H203

ROOF NEW WORK PLAN
SCALE: 1/16" = 1'-0"



GENERAL NOTE:

1. ALL CONTROLS WORK SHALL BE PERFORMED BY TECHNICAL BUILDING SERVICES, INC.
CONTACT: ED ROCKSTROH
(P): (518) 885-4444
(E): edrockstroh@tbscontrols.com

KEY NOTES:

- 1 PROVIDE NEW EXHAUST FAN AND CURB IN LOCATION SHOWN. M.C. TO PROVIDE CURB AND MARK OUT LOCATION. COORDINATE INSTALLATION OF CURB WITH G.C.
- 2 PROVIDE NEW EXHAUST FAN. M.C. TO PROVIDE AND MARK OUT LOCATION OF NEW CURB. COORDINATE CUTTING AND PATCHING WITH G.C.



CPLteam.com
ARCHITECTURE • ENGINEERING • PLANNING

50 FRONT STREET, SUITE 202
NEWBURGH, NEW YORK 12550
TEL (800) 274-9000

REVISIONS		DESCRIPTION	
NO.	DATE	BY	DESCRIPTION



POUGHKEEPSIE CITY SCHOOL DISTRICT
2020 CAPITAL IMPROVEMENT PROJECT
PHASE 1B: BUILDING IMPROVEMENTS

☐ POUGHKEEPSIE HIGH SCHOOL: SED# 13-15-00-01-0-007-018

☐ POUGHKEEPSIE MIDDLE SCHOOL: SED# 13-15-00-01-0-008-021

☐ POUGHKEEPSIE JUNIOR HIGH SCHOOL: SED# 13-15-00-01-0-009-014

☐ KREGER ELEMENTARY SCHOOL: SED# 13-15-00-01-0-004-014

☐ MORSE ELEMENTARY SCHOOL: SED# 13-15-00-01-0-002-014

☐ WARRING ELEMENTARY SCHOOL: SED# 13-15-00-01-0-005-013

☐ WARRING ELEMENTARY SCHOOL: SED# 13-15-00-01-0-006-013

☐ COLUMBUS ELEMENTARY SCHOOL: SED# 13-15-00-01-0-001-014

DATE	DRAWN	CHECKED
10/20/2021	BEF	AJS
SCALE: 1/16" = 1'-0"		
SHEET TITLE		
WARRING ELEMENTARY SCHOOL ROOF DEMOLITION PLANS		

PROJECT NUMBER

14078.09

WES

H203

DRAWING NUMBER