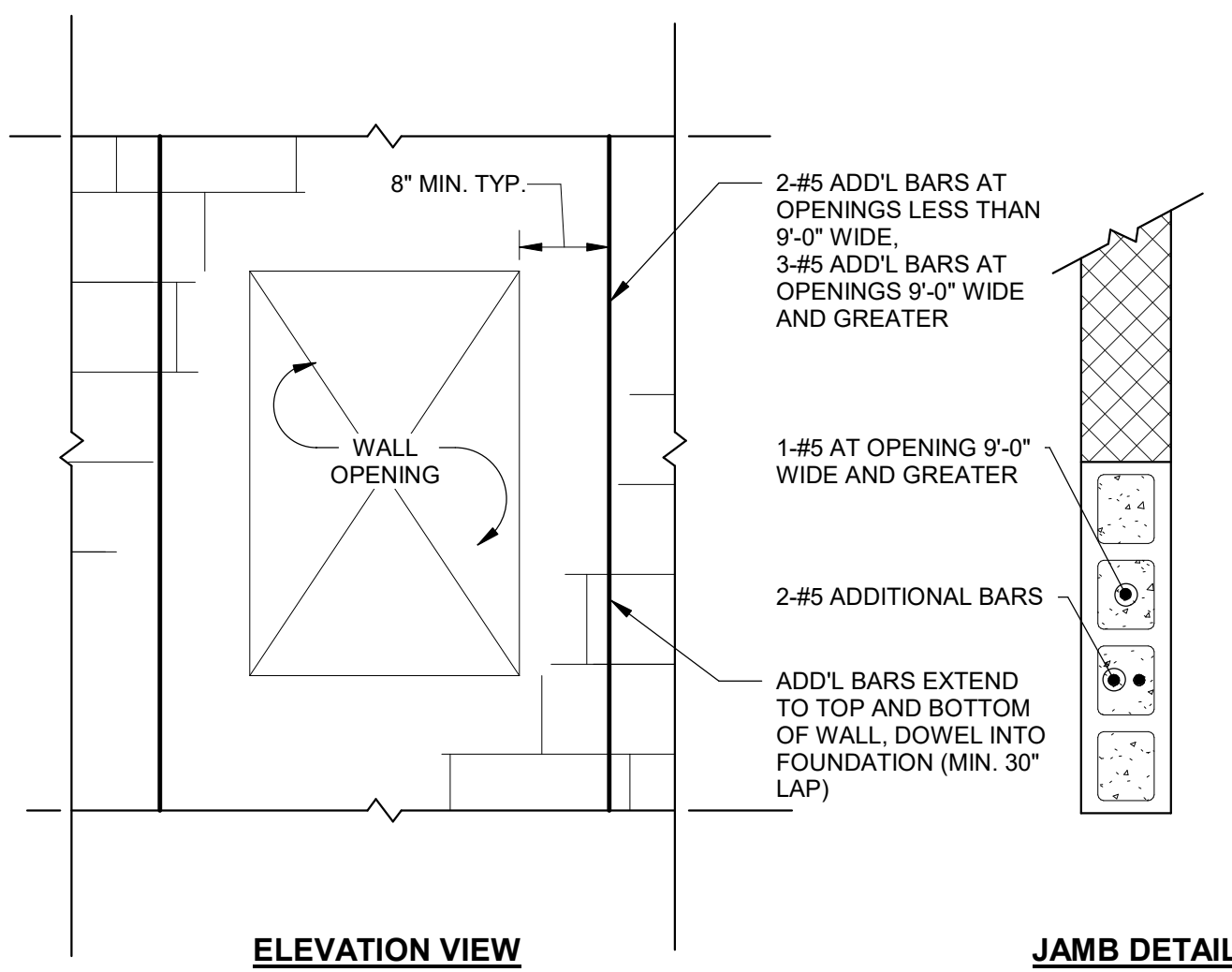
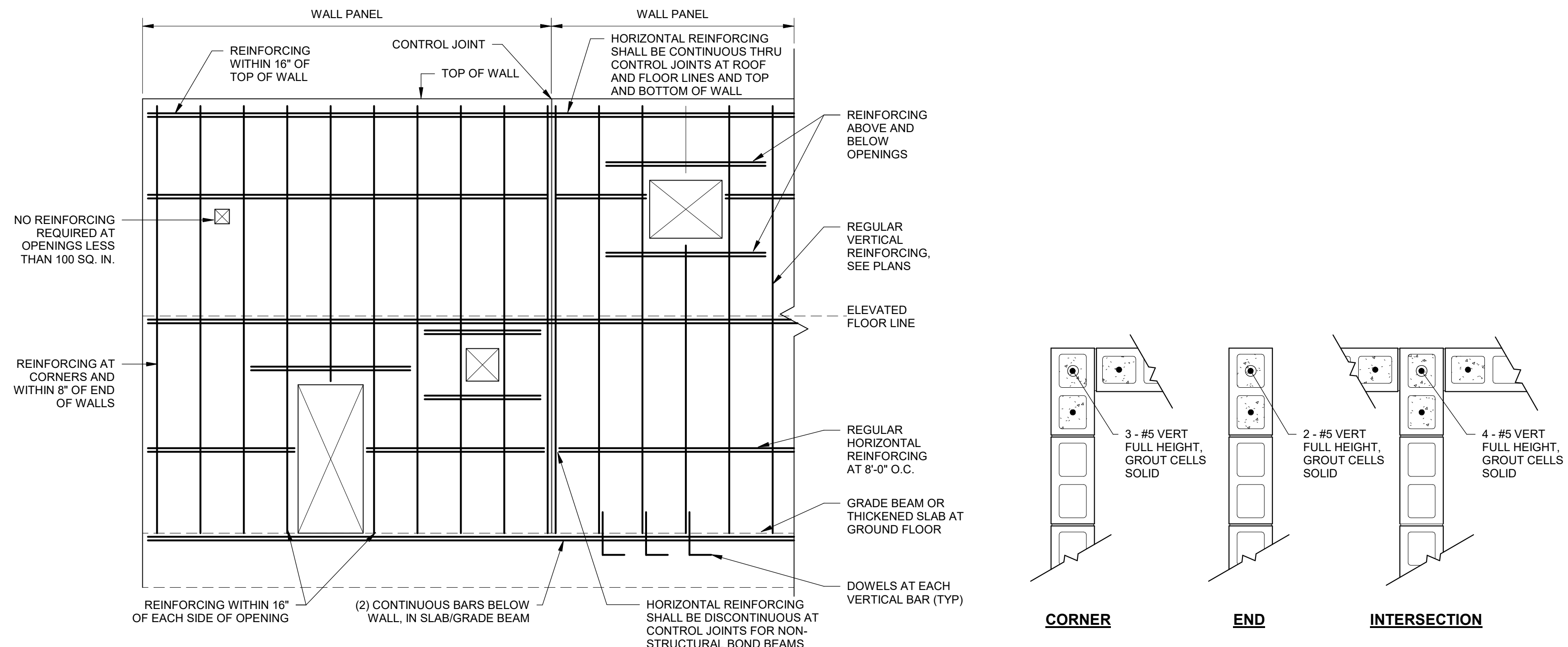


1 TYPICAL CMU CONSTRUCTION  
SCALE: 1/2" = 1'-0"

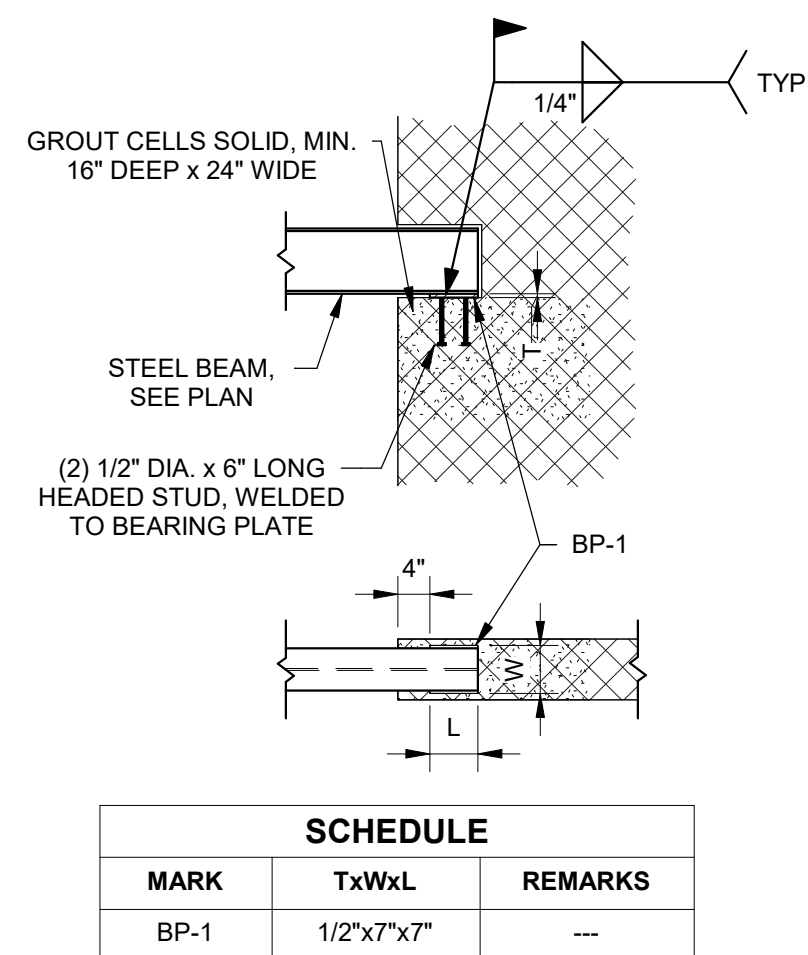


2 ADDITIONAL REINFORCING AT CMU OPENINGS  
SCALE: 3/4" = 1'-0"

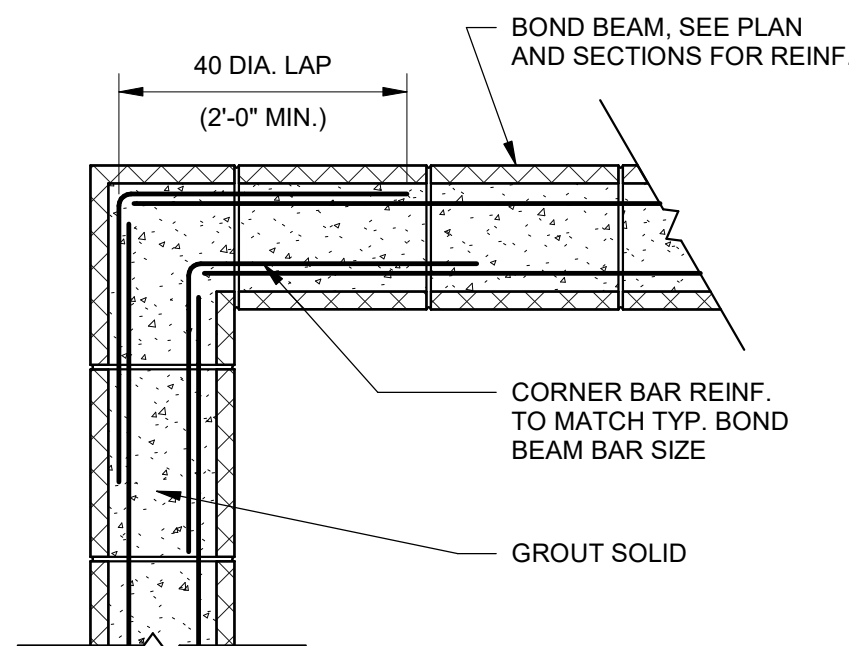


3 TYPICAL MASONRY WALL REINFORCING  
SCALE: 1/4" = 1'-0"

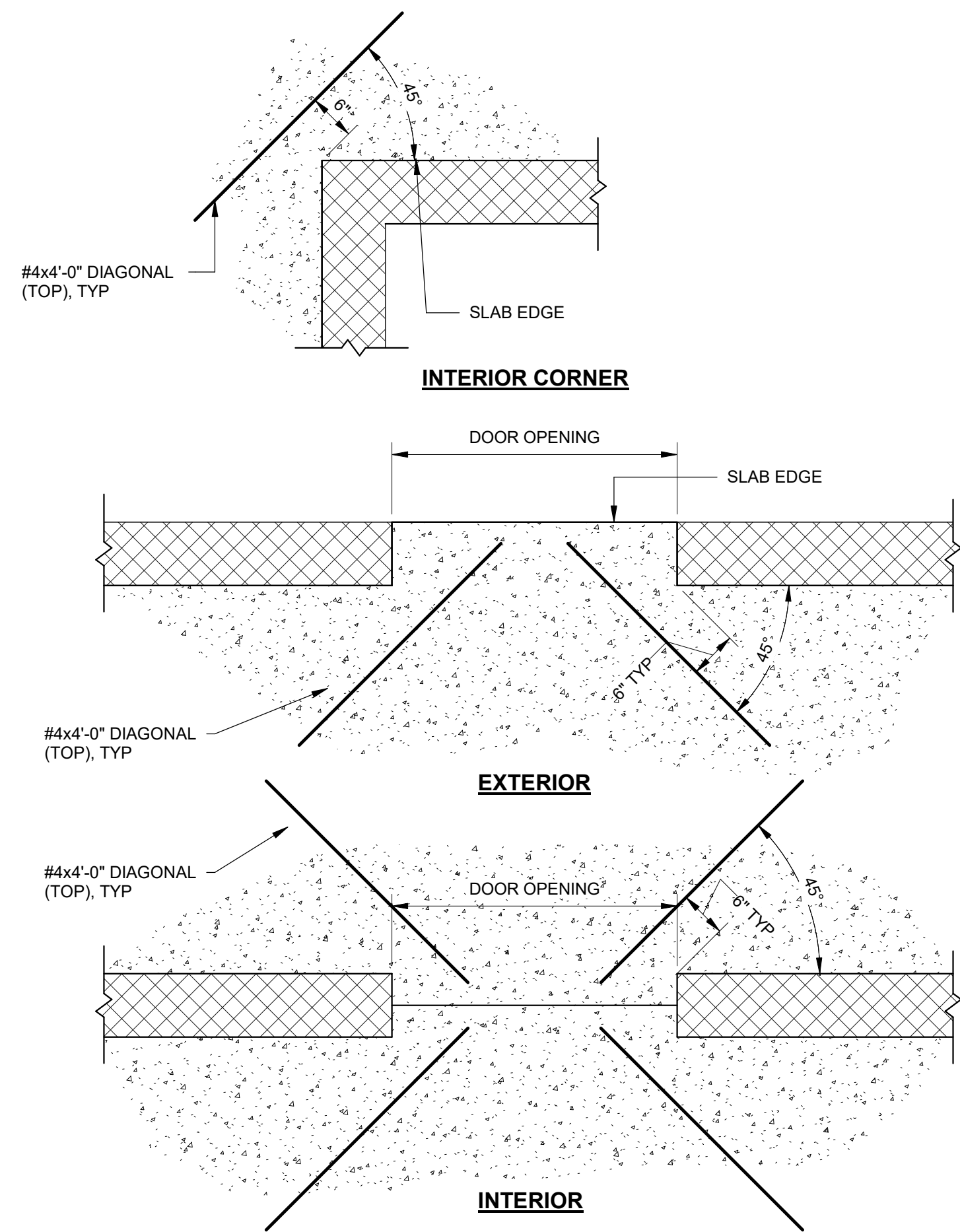
4 TYPICAL CMU REINFORCING  
SCALE: 3/4" = 1'-0"



5 TYPICAL BEAM BEARING AT CMU  
SCALE: 1/2" = 1'-0"

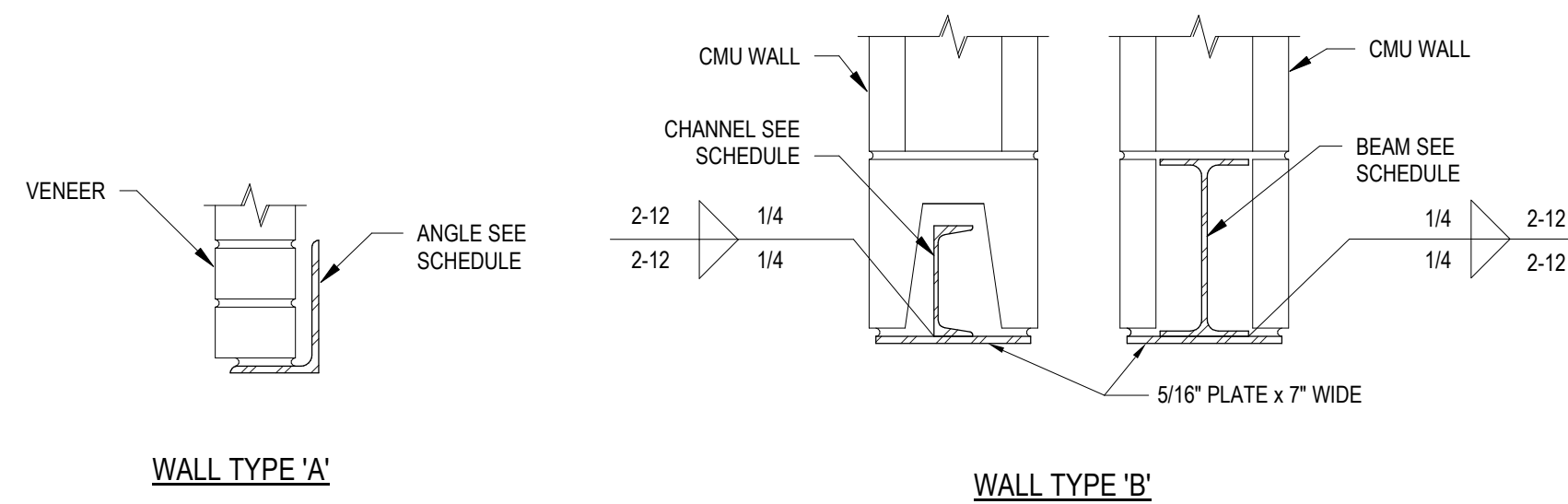


6 TYPICAL BOND BEAM CORNER  
SCALE: 3/4" = 1'-0"



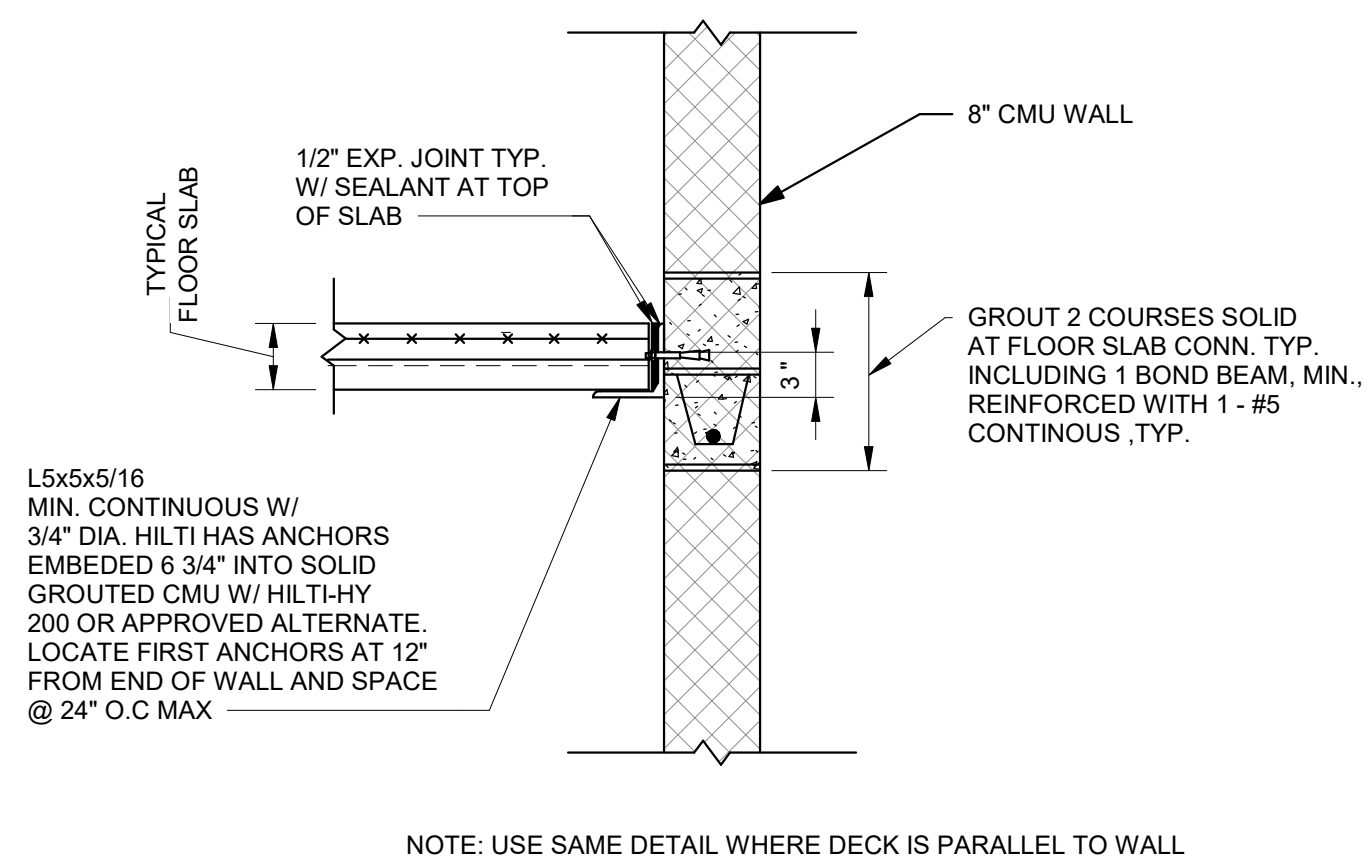
7 ADDITIONAL SLAB REINFORCING AT CMU  
SCALE: 3/4" = 1'-0"

TYPE OF WALL	OPENING SIZE		
	UP TO 4'-0"	4'-1" TO 8'-0"	8'-1" TO 12'-0"
4" VENEER (WALL A)	L5x3 1/2x5/16 LLV	L6x4x3/8 LLV	N/A
8" CMU ONLY (WALL B)	C4x5.4 + PLATE	W8x10 + PLATE	W8x15 + PLATE



- LINTEL NOTES:
- ALL EXTERIOR LINTELS TO BE GALVANIZED.
  - GROUT CORES IN MASONRY WALL FOR 16" MINIMUM BELOW LINTELS.
  - DO NOT LOCATE CONTROL OR EXPANSION JOINTS ABOVE LENGTH OF LINTEL.
  - PROVIDE A MINIMUM OF 6" BEARING EACH END OF LINTEL.
  - FOR OPENINGS IN EXISTING WALLS, PROVIDE TEMPORARY SUPPORT OF EXISTING WALL AND REBUILD MASONRY AT PERIMETER.

8 MASONRY LINTEL DETAIL  
SCALE: NO SCALE



9 TYPICAL DETAIL FLOOR CONNECTION TO CMU WALL  
SCALE: 3/4" = 1'-0"

REVISIONS

No.	Date	Description
1	7/7/2022	ISSUED FOR PERMIT

ENGINEERS  
PLANNERS  
SCIENTISTS  
CONSTRUCTION MANAGERS

**KCI**  
TECHNOLOGIES

5001 LOUREL DRIVE, SUITE 201  
MIDLAND, PA 15865  
PHONE: 717-691-1344  
WWW.KCI.COM

**SAA**architects

client centered • smart solutions

600 North Hanley Street, Suite 150  
York, PA 17404  
T - 717.843.3200 F - 717.698.0205  
WWW.SAAarchitects.com

TYPICAL MASONRY DETAILS

POUGHKEEPSIE NY STORAGE

DIAMOND POINT DEVELOPMENT

1998 SOUTH ROAD, POUGHKEEPSIE, NEW YORK 12601

SEAL OF THE STATE OF NEW YORK

NOTARY PUBLIC

085123-1

07/01/2022

FILE NO:

28220745

DATE:

07/01/2022

SCALE:

AS NOTED

DRAWN BY:

CTK

DRAWING NO.:

S-500