

KEYED NOTES	
1	PHOTOELECTRIC SMOKE DETECTOR FOR ELEVATOR RECALL.
2	MOUNT DEVICE 4'-0" AFF. TYPICAL FOR ALL STORAGE UNIT CORRIDOR RECEPTACLES.
3	PROVIDE RECEPTACLE WITH VERTICAL SELF-CLOSING COVERS WITH LOCK HASPS, ALL KEYED ALIKE, TYPICAL FOR ALL STORAGE UNIT CORRIDOR RECEPTACLES.
4	COORDINATE THE LOCATION OF ALL ELEVATOR PIT AND SHAFT LIGHTING, RECEPTACLES, EQUIPMENT, ETC. WITH ARCHITECT, ELEVATOR MANUFACTURER AND EQUIPMENT PROVIDED.
5	PROVIDE CONNECTION FOR AUTOMATIC DOOR, COORDINATE LOCATION AND REQUIREMENTS WITH ARCHITECT AND EQUIPMENT SUPPLIED.
6	EQUIPMENT PROVIDED WITH INTEGRAL MANUFACTURER DISCONNECT.
7	PROVIDE 240V, 3P, 30A NON-FUSED DISCONNECT SWITCH FOR SLUMP PUMP, COORDINATE LOCATION AND REQUIREMENTS WITH ELEVATOR AND EQUIPMENT PROVIDED.
8	PROVIDE 240V, 2P, 60A NON-FUSED DISCONNECT SWITCH.
9	PROVIDE MANUAL MOTOR STARTER WITH PROPER THERMAL ELEMENT INSTALLED.
10	PROVIDE 240V, 2P, 30A, NON-FUSED DISCONNECT FOR ELEVATOR CAB LIGHTING AND POWER, COORDINATE LOCATION AND REQUIREMENTS WITH ELEVATOR AND EQUIPMENT PROVIDED.

REVISIONS	
No.	Description

ENGINEERS
PLANNERS
SCIENTISTS
CONSTRUCTION MANAGERS
KC1
TECHNOLOGIES

5000 LOUISE DRIVE SUITE 300
MIDLEBORO, MA 01569
PHONE: 717-691-1340
WWW.KC1.COM

SAAarchitects
Client centered • Smart solutions

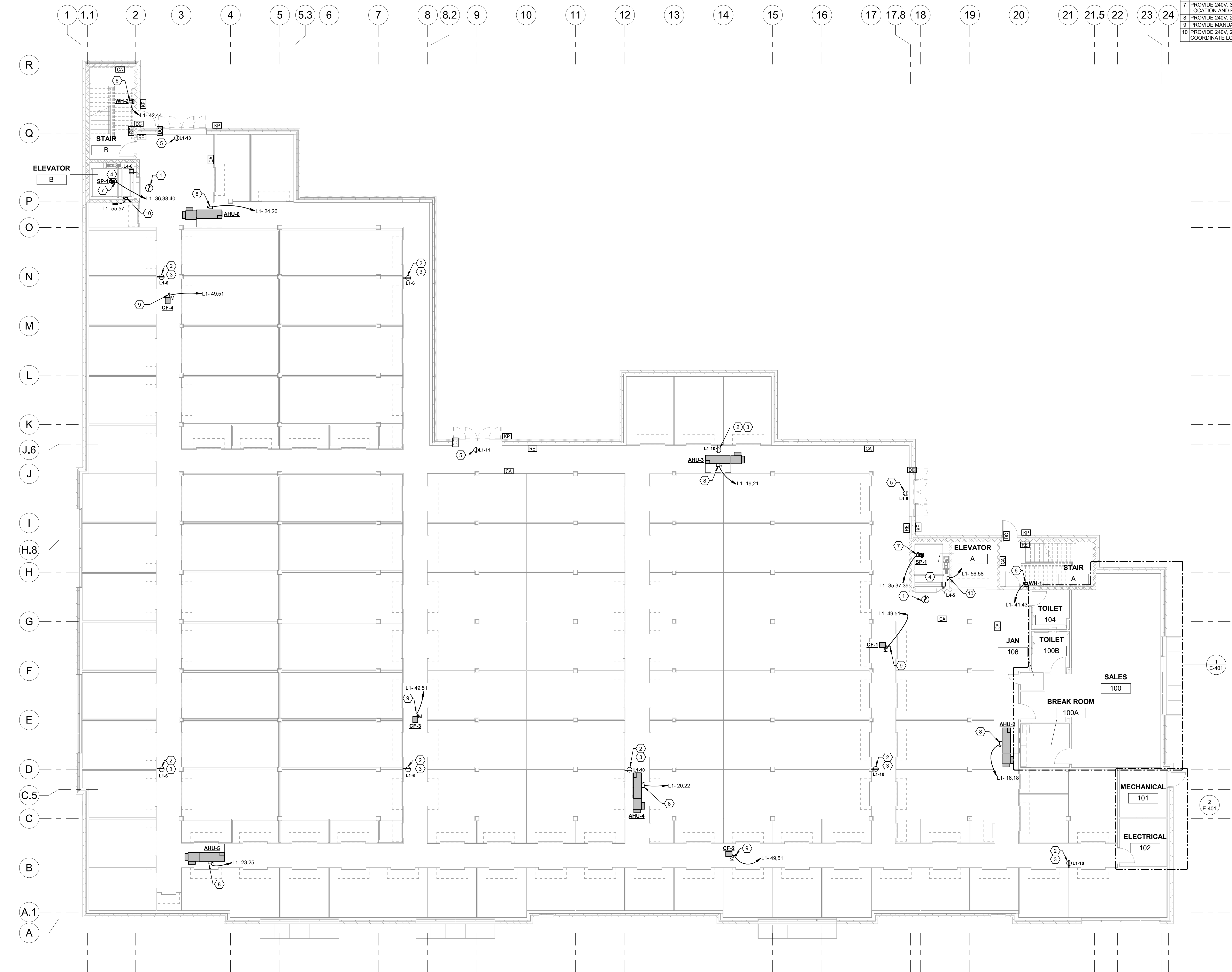
600 North Hanley Street, Suite 150
York, PA 17404
T - 717-843-3200 F - 717-698-0205
www.SAAarchitects.com

DRAWING TITLE
ELECTRICAL POWER PLAN - FIRST FLOOR
POUGHKEEPSIE NY STORAGE
© 2020 SAAarchitects, Inc.

DIAMOND POINT DEVELOPMENT
1898 SOUTH ROAD POUGHKEEPSIE, NEW YORK 12601
DUTCHESS COUNTY

STATE OF NEW YORK
SEAL OF THE STATE ENGINEER
JULY 1, 2022
102.03950
Professional Engineer

FILE NO: 22-082
DATE: 7/1/2022
SCALE: AS NOTED
DRAWN BY: AMB
CHECKED BY: [Signature]
DATE: 7/1/2022
PROJECT NO: E-201



1 ELECTRICAL POWER PLAN - FIRST FLOOR
1/8" = 1'-0"

WARNING: It is a violation of the NYS Education Law Article 145 for any person to alter this document in any way, unless they are acting under the direction of a Professional Engineer

ISSUED FOR PERMIT