

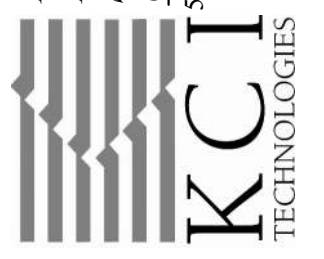
- ELECTRICAL GENERAL NOTES:**
- SEE SHEET E-401 FOR SYMBOL, ABBREVIATIONS, GENERAL NOTES AND NEMA RATING OF ENCLOSURES FOR EACH RESPECTIVE AREA.
  - CONTRACTOR SHALL FIELD COORDINATE ALL ELECTRICAL INSTALLATIONS WITH ALL DISCIPLINES.
  - SEE LIGHT FIXTURE AND PANEL SCHEDULES ON SHEET E-602 FOR BRANCH CIRCUIT CONDUIT AND WIRING SIZES.
  - CONNECT EXIT SIGNS AND EMERGENCY BATTERY PACKS AT LIGHT FIXTURES TO LIGHT CIRCUIT SERVING AREA, AHEAD OF ANY LIGHTING CONTROL.
  - IN ACCORDANCE WITH NEC 358.26, THERE SHALL BE NO MORE THAN A TOTAL OF 360° OF BENDS IN A CONDUIT ROUTING BETWEEN PULL POINTS (BOXES AND ENCLOSURES).
  - HOMERUN FOR EXTERIOR WALL PACKS TO RUN THROUGH EXTERIOR LIGHTING CONTROL CONTACTOR. REFER TO DETAIL 7 ON SHEET E-502 FOR ADDITIONAL INFORMATION.

**KEYED NOTES**

- COORDINATE THE LOCATION OF ALL ELEVATOR PIT AND SHAFT LIGHTING, RECEPTACLES, EQUIPMENT, ETC. WITH ARCHITECT, ELEVATOR MANUFACTURER AND EQUIPMENT PROVIDED.

NO.	DATE	DESCRIPTION

ENGINEERS  
PLANNERS  
SCIENTISTS  
CONSTRUCTION MANAGERS



KCI  
TECHNOLOGIES

500 LOUISE DRIVE, SUITE 300  
ROCKY HILL, CT 06155  
PHONE: 717-691-1340  
WWW.KCI.COM

**SAA architects**  
Client centered • Smart solutions

600 North Hanley Street, Suite 150  
York, PA 17404  
T - 717-843-3200 F - 717-699-0295  
www.SAAarchitects.com

**ELECTRICAL LIGHTING PLAN - FIRST FLOOR**  
POUGHKEEPSIE NY STORAGE  
DIAMOND POINT DEVELOPMENT

1899 SOUTH ROAD POUGHKEEPSIE, NEW YORK 12601  
DUTCHESS COUNTY

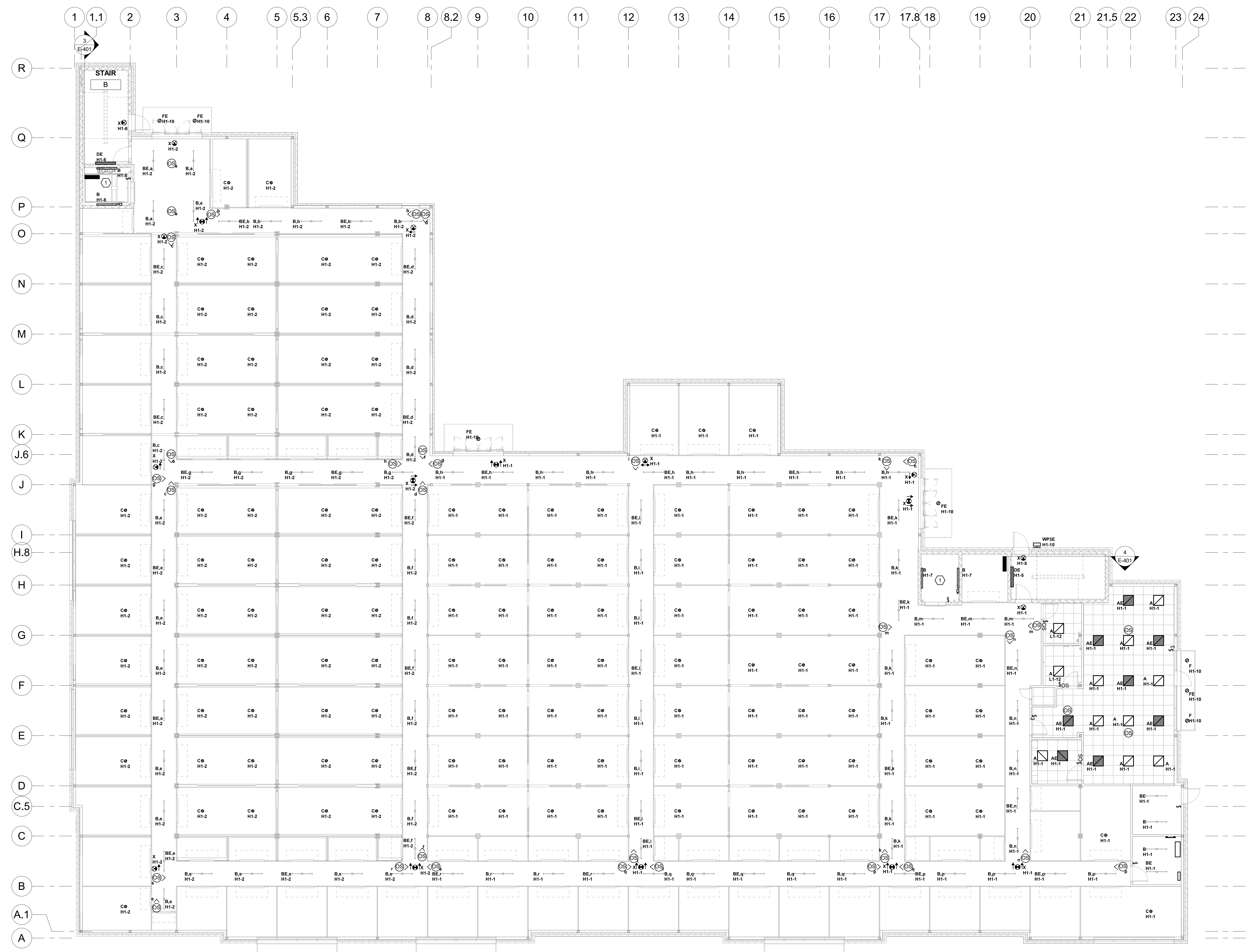
DRAWING TITLE  
POUGHKEEPSIE NY STORAGE  
DIAMOND POINT DEVELOPMENT



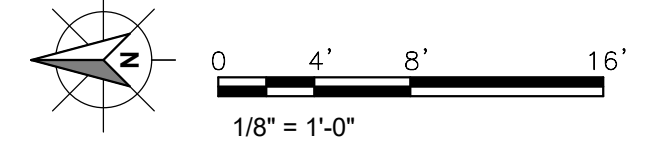
FILE NO:	22-082
DATE:	7/1/2022
SCALE:	AS NOTED
DRAWN BY:	AMB
DRAWING NO.:	E-301

WARNING: It is a violation of the NYS Education Law Article 145 for any person to alter this document in any way, unless they are acting under the direction of a Professional Engineer.

ISSUED FOR PERMIT



**1 ELECTRICAL LIGHTING PLAN - FIRST FLOOR**  
1/8" = 1'-0"



7/1/2022 2:28:54 PM C:\Users\jcampbell\Documents\Projects\NY Storage\PEP\_2022\_Amb\PEP\_2022.dwg