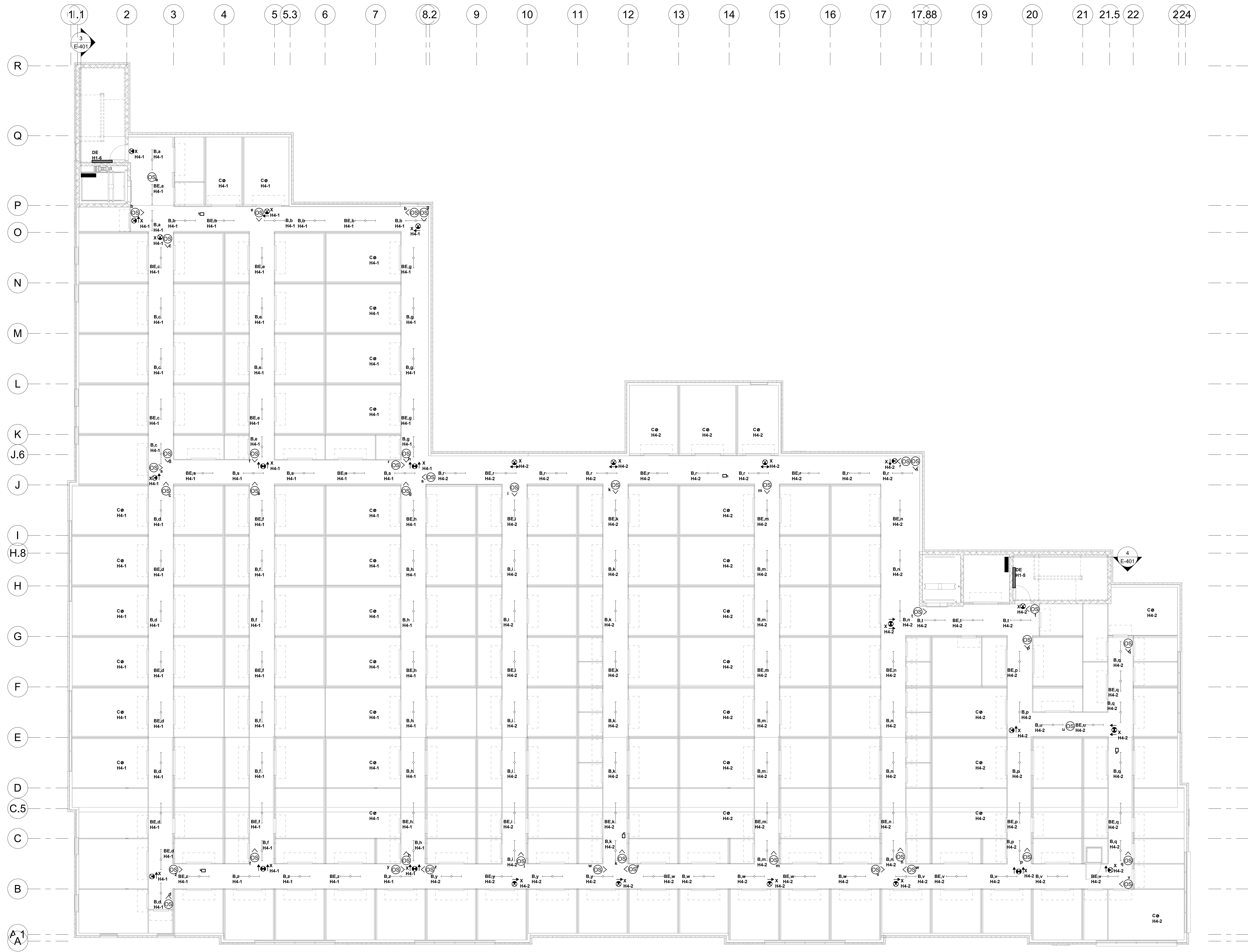


- ELECTRICAL GENERAL NOTES:**
- SEE SHEET E-001 FOR SYMBOL, ABBREVIATIONS, GENERAL NOTES AND NEMA RATING OF ENCLOSURES FOR EACH RESPECTIVE AREA.
 - CONTRACTOR SHALL FIELD COORDINATE ALL ELECTRICAL INSTALLATIONS WITH ALL DISCIPLINES.
 - SEE LIGHT FIXTURE AND PANEL SCHEDULES ON SHEET E-602 FOR BRANCH CIRCUIT CONDUIT AND WIRING SIZES.
 - CONNECT EXIT SIGNS AND EMERGENCY BATTERY PACKS AT LIGHT FIXTURES TO LIGHT CIRCUIT SERVING AREA, AHEAD OF ANY LIGHTING CONTROL.
 - IN ACCORDANCE WITH NEC 358.26, THERE SHALL BE NO MORE THAN A TOTAL OF 360° OF BENDS IN A CONDUIT ROUTING BETWEEN PULL POINTS (BOXES AND ENCLOSURES).
 - HOMERUN FOR EXTERIOR WALL PACKS TO RUN THROUGH EXTERIOR LIGHTING CONTROL FACTOR. REFER TO DETAIL 7 ON SHEET E-502 FOR ADDITIONAL INFORMATION.



1 ELECTRICAL LIGHTING PLAN - THIRD FLOOR
1/8" = 1'-0"

| NO. | DATE | DESCRIPTION |
|-----|------|-------------|
| | | |
| | | |
| | | |
| | | |
| | | |
| | | |
| | | |
| | | |
| | | |
| | | |

REVISIONS

ENGINEERS
PLANNERS
SCIENTISTS
CONSTRUCTION MANAGERS

KCI
TECHNOLOGIES

500 LOUISE DRIVE, SUITE 300
ROCKY HILL, CT 06155
PHONE: 717-691-1340
WWW.KCI.COM

SAA architects
Client centered • Smart solutions

600 North Hanley Street, Suite 150
York, PA 17404
T - 717-843-3200 F - 717-699-0295
www.SAAarchitects.com

ELECTRICAL LIGHTING PLAN - THIRD FLOOR

POUGHKEEPSIE NY STORAGE
DIAMOND POINT DEVELOPMENT

1899 SOUTH ROAD POUGHKEEPSIE, NEW YORK 12601
DUTCHESS COUNTY

STATE OF NEW YORK
JULY 1995
REGISTERED PROFESSIONAL ENGINEER

| | |
|--------------|----------|
| FILE NO: | 22-082 |
| DATE: | 7/1/2022 |
| SCALE: | AS NOTED |
| DRAWN BY: | AMB |
| DRAWING NO.: | E-303 |

WARNING: It is a violation of the NYS Education Law Article 145 for any person to alter this document in any way, unless they are acting under the direction of a Professional Engineer.

ISSUED FOR PERMIT

7/1/2022 2:58 PM C:\Users\jcampbell\Documents\Projects\2022\Diamond Point\303 - 3rd Floor\303.dwg