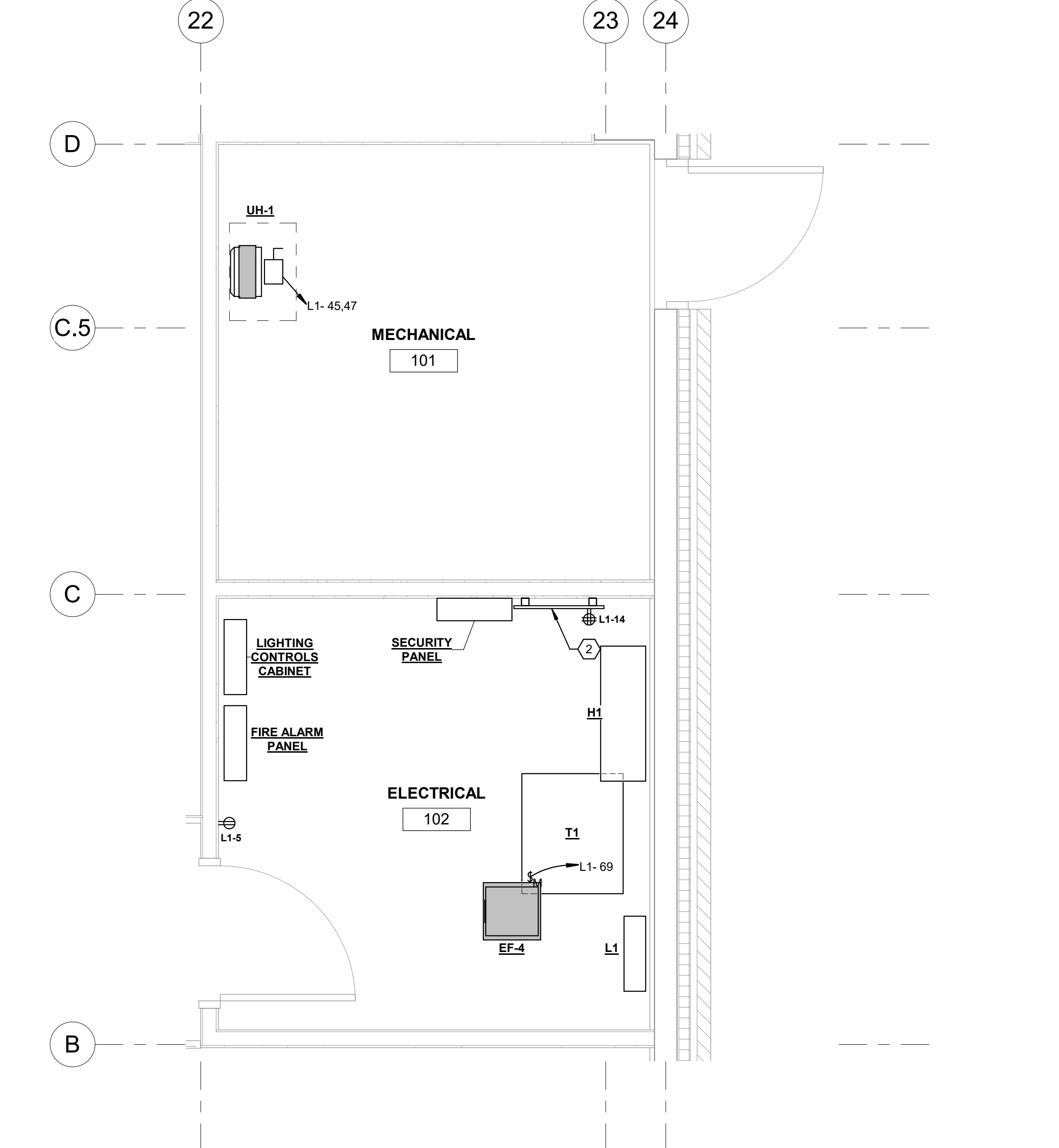
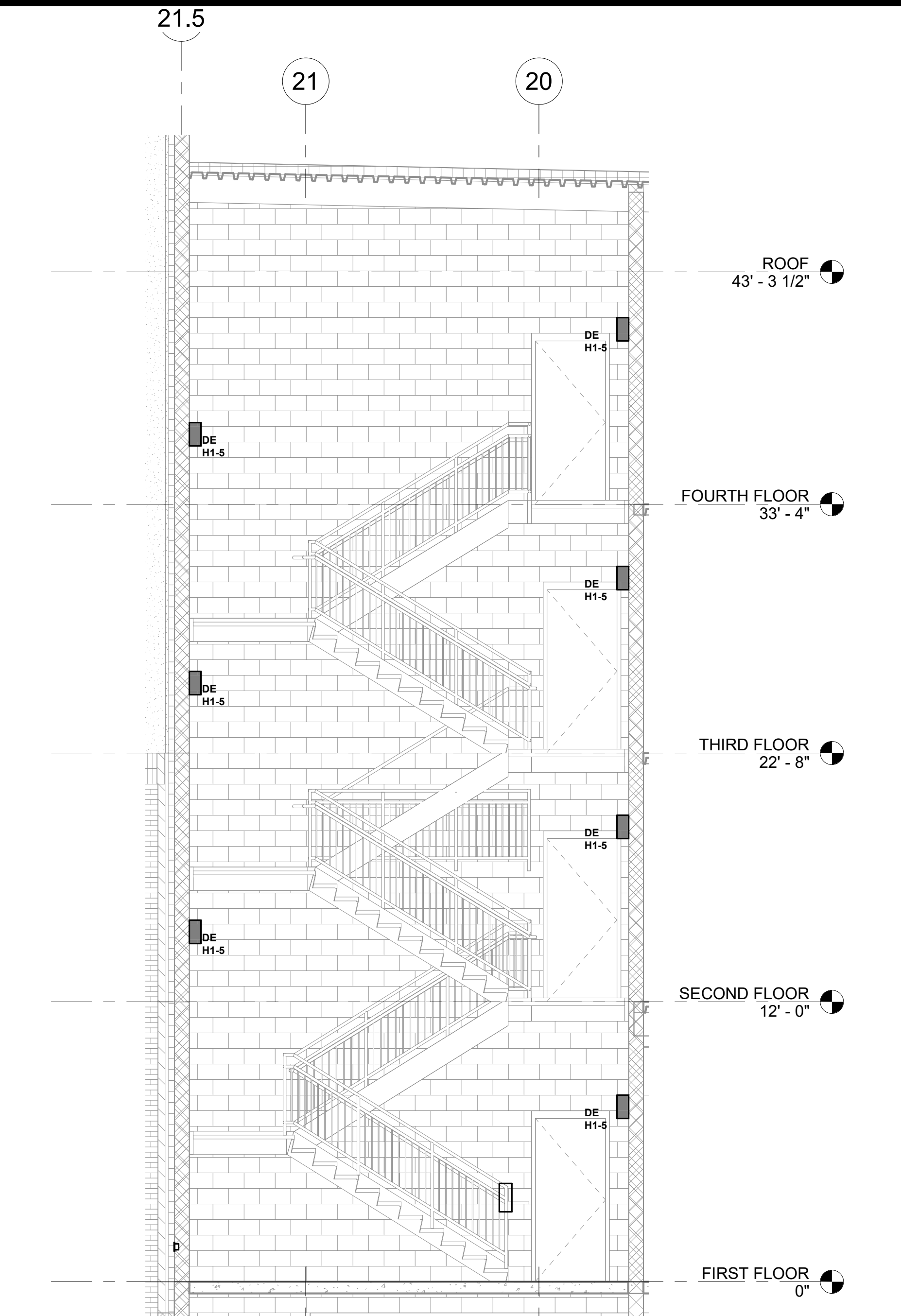


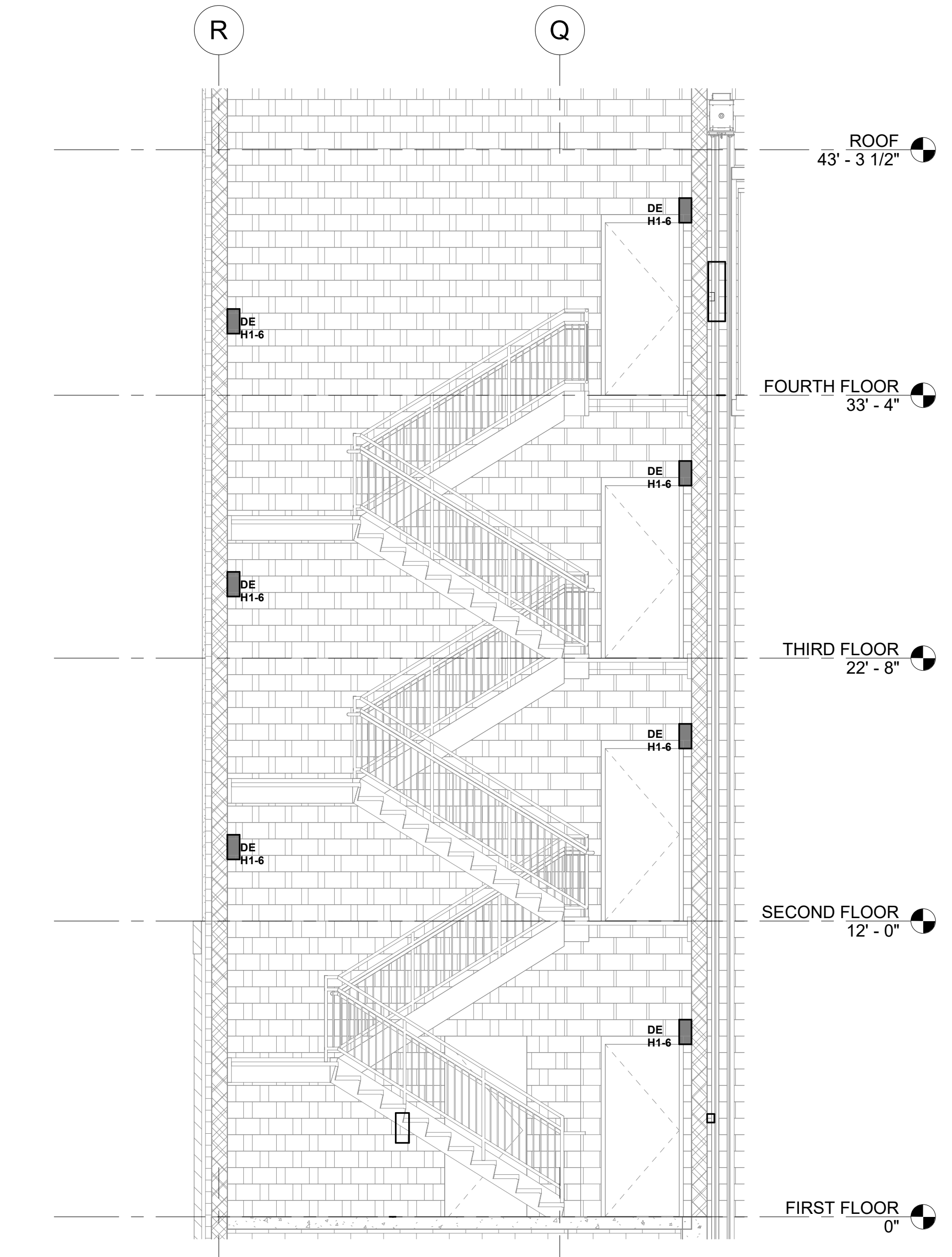
1 ELECTRICAL POWER PLAN - FIRST FLOOR PART PLAN  
1/4" = 1'-0"



2 ELECTRICAL POWER PLAN - ELECTRICAL ROOM - FIRST FLOOR  
1/2" = 1'-0"

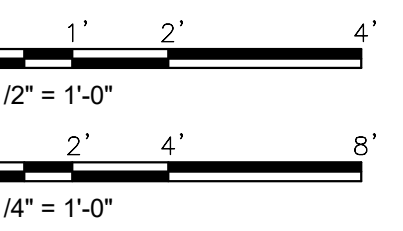


3 LIGHTING ELEVATION - STAIR A  
1/4" = 1'-0"



4 LIGHTING ELEVATION - STAIR B  
1/4" = 1'-0"

KEYED NOTES	
1	PROVIDE DUAL SERVICE RECESSED FLOOR BOX. COORDINATE FINAL LOCATION AND REQUIREMENTS WITH ARCHITECT AND OWNER'S REPRESENTATIVE. PROVIDE ONE (1) EMPTY 1-1/2" CONDUIT WITH PULLSTRING, ROUTED PARALLEL TO POWER CONDUIT, TO WALL AND UP TO ACCESSIBLE CEILING.
2	PROVIDE 2'-0" WIDE x 4'-0" HIGH x 3/4" THICK FIRE RATED PLYWOOD TELEPHONE BACKBOARD. EXTEND TWO EMPTY 4" CONDUITS WITH PULLSTRINGS TO PROPERTY LINE AND STUB UP. COORDINATE LOCATION AND REQUIREMENTS OF CONDUIT WITH COMMUNICATIONS COMPANY.
3	EXHAUST FAN ON/OFF CONTROL VIA LOCAL LIGHTING SWITCH.
4	PROVIDE RECEPTACLE FOR CONNECTION OF RP-1, COORDINATE LOCATION AND REQUIREMENTS WITH EQUIPMENT PROVIDED.



WARNING: It is a violation of the NYS Education Law Article 145 for any person to alter this document in anyway, unless they are acting under the direction of a Professional Engineer

ISSUED FOR PERMIT

REVISIONS

No.	Description

ENGINEERS  
PLANNERS  
SCIENTISTS  
CONSTRUCTION MANAGERS

500 LOUISE DRIVE, SUITE 200  
MADISON, NJ 07940  
PHONE: 717-691-1340  
WWW.KCI.COM

SA architects

Client centered • Smart solutions

600 North Hanley Street, Suite 150  
York, PA 17404  
T - 717-843-3200 F - 717-698-0205  
WWW.SAArchitects.com

ELECTRICAL ENLARGED PLANS

POUGHKEEPSIE NY STORAGE  
DIAMOND POINT DEVELOPMENT

1999 SOUTH ROAD POUGHKEEPSIE, NEW YORK 12601  
DUTCHESS COUNTY

STATE OF NEW YORK  
JULY 1, 2022  
REGISTERED PROFESSIONAL ENGINEER

FILE NO: 22-082  
DATE: 7/1/2022  
SCALE: AS NOTED  
DRAWN BY: AMB  
DRAWING NO: E-401