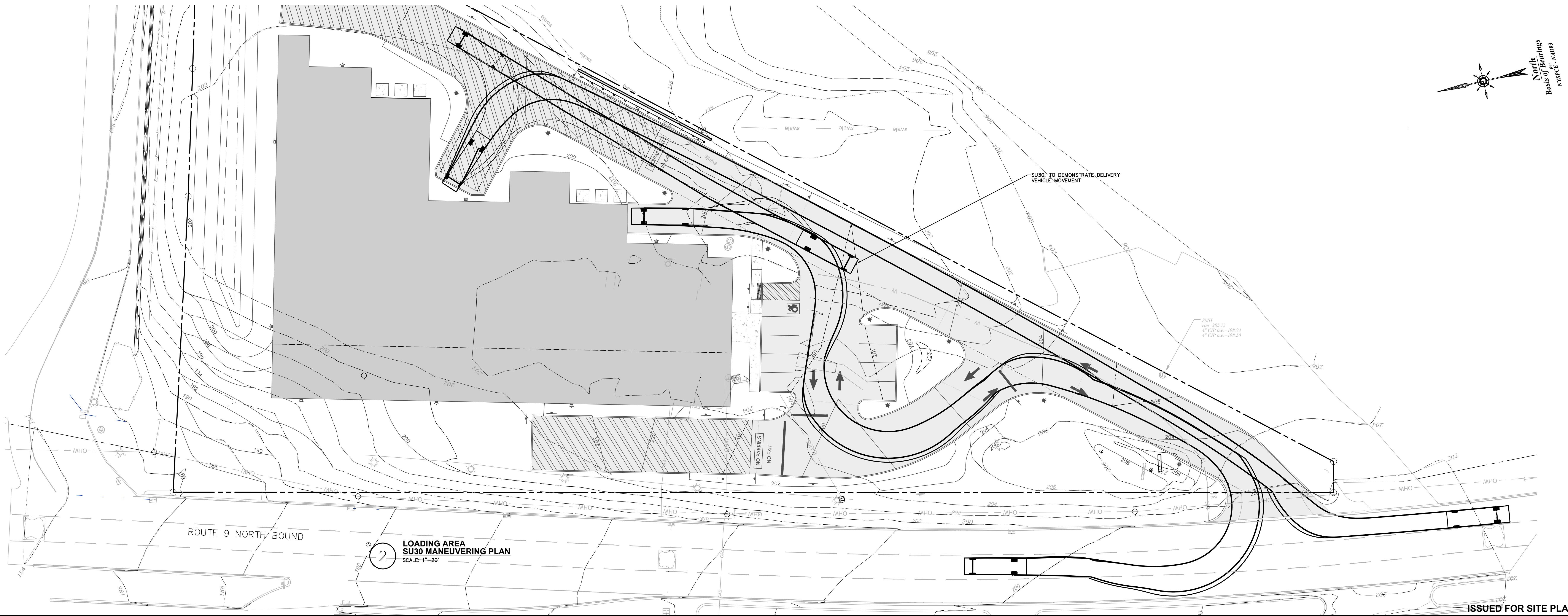
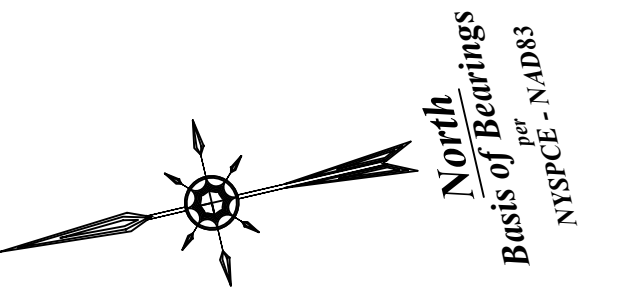
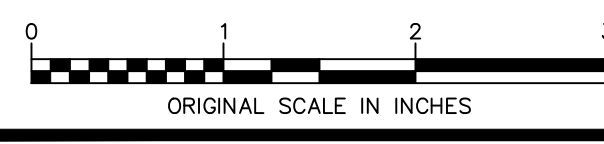


1 NORTHBOUND FIRE TRUCK MANEUVERING PLAN (WB40)  
SCALE: 1"=20'



2 LOADING AREA SU30 MANEUVERING PLAN  
SCALE: 1"=20'

ISSUED FOR SITE PLAN APPROVAL



Drawing Name: 2\_Project\82133-00\82133-00 Diamond Point Development - 0510\DWG\01\_C131-C132\_82133-00\_TRUCK.dwg  
User: Administrator 1/18/2022 10:55:42 AM  
Date Printed: Jul 05, 2022, 10:55am

ALL RIGHTS RESERVED. COPY OR REPRODUCTION OF THIS DRAWING OR DOCUMENT, OR ANY PORTION THEREOF, WITHOUT THE EXPRESS WRITTEN PERMISSION OF CHAZEN ENGINEERING, LAND SURVEYING, LANDSCAPE ARCHITECTURE & GEOLOGY CO., D.P.C. IS PROHIBITED. THIS DRAWING OR DOCUMENT IS NOT INTENDED OR REPRESENTED TO BE SUITABLE FOR ANY PURPOSE OTHER THAN THAT FOR WHICH IT WAS PREPARED, APPLICATION OR SITUATION, OTHER THAN THAT FOR WHICH IT WAS PREPARED, WILL BE AT USER'S SOLE RISK AND WITHOUT LIABILITY TO CHAZEN ENGINEERING, LAND SURVEYING, LANDSCAPE ARCHITECTURE & GEOLOGY CO., D.P.C.  
IT IS A VIOLATION OF NEW YORK STATE EDUCATION LAW FOR ANY PERSON TO ALTER THIS DRAWING OR DOCUMENT IN ANY WAY, UNLESS HE OR SHE IS ACTING UNDER THE DIRECTION OF A LICENSED DESIGN PROFESSIONAL (PROFESSIONAL ENGINEER, LAND SURVEYOR, ARCHITECT, LANDSCAPE ARCHITECT OR GEOLOGIST). IF THIS DRAWING OR DOCUMENT IS ALTERED, THE ALTERING DESIGN PROFESSIONAL SHALL AFFIX TO THE DRAWING OR DOCUMENT HIS OR HER SEAL, THE NOTATION ALTERED BY FOLLOWED BY HIS OR HER SIGNATURE, THE DATE OF SUCH ALTERATION, AND A SPECIFIC DESCRIPTION OF THE ALTERATION.

CHAZEN ENGINEERING, LAND SURVEYING,  
LANDSCAPE ARCHITECTURE & GEOLOGY CO., D.P.C.  
Office Locations:  
● Glens Falls, NY  
● Troy, NY  
● Poughkeepsie, NY  
● White Plains, NY  
● New York City, NY  
Hudson Valley Office  
21 Fox Street  
Poughkeepsie, New York 12601  
www.chazencompanies.com  
8880 538-9073

rev.	date	description
1	03/28/22	REVISED PER TOWN COMMENTS

designed	checked
date	scale
project no.	82133.00
sheet no.	C131

1998 SOUTH ROAD - STORAGE FACILITY  
**TRUCK MANEUVERING PLAN**  
TOWN OF POUGHKEEPSIE, DUTCHESS COUNTY, NEW YORK