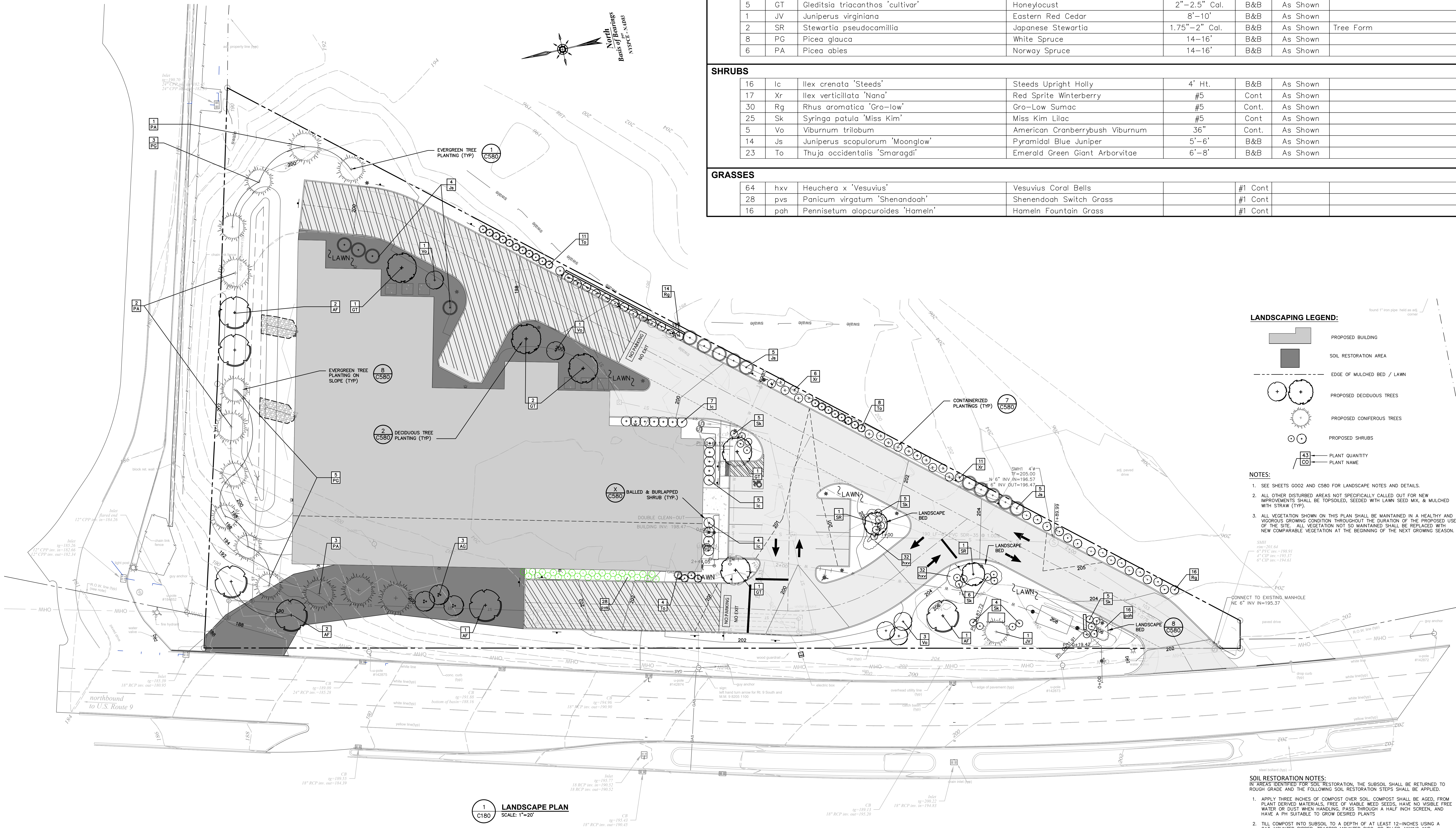
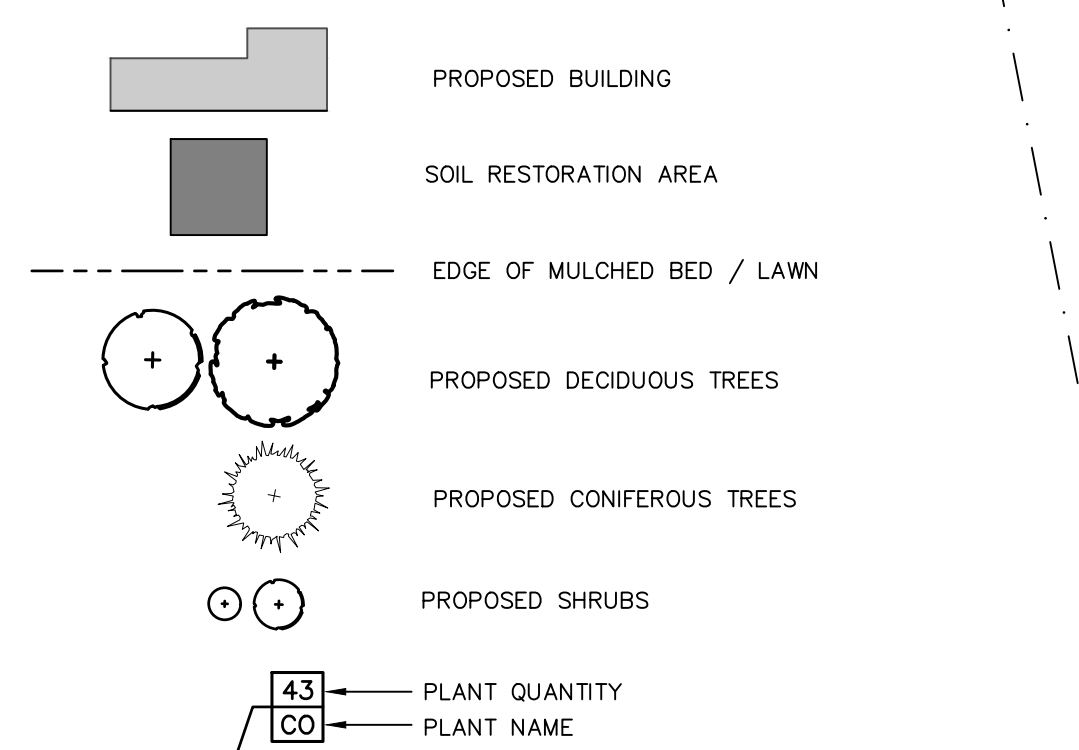


PLANT LIST

QTY	ABRV	BOTANICAL NAME	COMMON NAME				
TREES							
3	AG	Amelanchier grandiflora 'Autumn Brilliance'	Autumn Brilliance Serviceberry	7'–8'	B&B	As Shown	Multi–Stemp Clump
6	AF	Acer x freemanii 'Autumn Blaze'	Autumn Blaze Freeman Maple	10–12'	B&B	As Shown	Multistem
5	GT	Gleditsia triacanthos 'cultivar'	Honeylocust	2"–2.5" Cal.	B&B	As Shown	
1	JV	Juniperus virginiana	Eastern Red Cedar	8'–10'	B&B	As Shown	
2	SR	Stewartia pseudocamillia	Japanese Stewartia	1.75"–2" Cal.	B&B	As Shown	Tree Form
8	PG	Picea glauca	White Spruce	14–16'	B&B	As Shown	
6	PA	Picea abies	Norway Spruce	14–16'	B&B	As Shown	
SHRUBS							
16	Ic	Ilex crenata 'Steeds'	Steeds Upright Holly	4' Ht.	B&B	As Shown	
17	Xr	Ilex verticillata 'Nana'	Red Sprite Winterberry	#5	Cont	As Shown	
30	Rg	Rhus aromatica 'Gro-low'	Gro–Low Sumac	#5	Cont.	As Shown	
25	Sk	Syringa patula 'Miss Kim'	Miss Kim Lilac	#5	Cont	As Shown	
5	Vo	Viburnum trilobum	American Cranberrybush Viburnum	36"	Cont.	As Shown	
14	Js	Juniperus scopulorum 'Moonglow'	Pyramidal Blue Juniper	5'–6'	B&B	As Shown	
23	To	Thuja occidentalis 'Smaragdi'	Emerald Green Giant Arborvitae	6'–8'	B&B	As Shown	
GRASSES							
64	hvx	Heuchera x 'Vesuvius'	Vesuvius Coral Bells		#1 Cont		
28	pvs	Panicum virgatum 'Shenandoah'	Shenandoah Switch Grass		#1 Cont		
16	pah	Pennisetum alopecuroides 'Hameln'	Hameln Fountain Grass		#1 Cont		



LANDSCAPING LEGEND:



NOTES:

- SEE SHEETS G002 AND C580 FOR LANDSCAPE NOTES AND DETAILS.
- ALL OTHER DISTURBED AREAS NOT SPECIFICALLY CALLED OUT FOR NEW IMPROVEMENTS SHALL BE TOPSOILED, SEEDED WITH LAWN SEED MIX, & MULCHED WITH STRAW (TYP).
- ALL VEGETATION SHOWN ON THIS PLAN SHALL BE MAINTAINED IN A HEALTHY AND VIGOROUS GROWING CONDITION THROUGHOUT THE DURATION OF THE PROJECT. ALL VEGETATION NOT SO MAINTAINED SHALL BE REPLACED WITH NEW COMPARABLE VEGETATION AT THE BEGINNING OF THE NEXT GROWING SEASON.

SOIL RESTORATION NOTES:

- IN AREAS IDENTIFIED FOR SOIL RESTORATION, THE SUBSOIL SHALL BE RETURNED TO ROUGH GRADE AND THE FOLLOWING SOIL RESTORATION STEPS SHALL BE APPLIED:
- APPLY THREE INCHES OF COMPOST OVER SOIL. COMPOST SHALL BE AGED, FROM PLANT DERIVED MATERIALS, FREE OF VIABLE WEED SEEDS, HAVE NO VISIBLE FREE WATER OR DUST WHEN HANDLING, PASS THROUGH A HALF INCH SCREEN, AND HAVE A PH SUITABLE TO GROW DESIRED PLANTS.
 - TILL COMPOST INTO SUBSOIL TO A DEPTH OF AT LEAST 12-INCHES USING A CAT-MOUNTED RIPPER, TRACTOR MOUNTED DISC, OR TILLER, MIXING AND CIRCULATING AIR AND COMPOST INTO SUB-SOILS.
 - ROCK-PICK UNTIL UPLIFTED STONE/ROCK MATERIALS OF FOUR INCHES AND LARGER SIZE ARE CLEARED OFF THE SITE.
 - APPLY TOPSOIL TO A DEPTH OF SIX INCHES.

ISSUED FOR SITE PLAN APPROVAL

ALL RIGHTS RESERVED. COPY OR REPRODUCTION OF THIS DRAWING OR DOCUMENT, OR ANY PORTION THEREOF, WITHOUT THE EXPRESS WRITTEN PERMISSION OF CHAZEN ENGINEERING, LAND SURVEYING, LANDSCAPE ARCHITECTURE & GEOLOGY CO., D.P.C. IS PROHIBITED. THIS DRAWING OR DOCUMENT IS NOT INTENDED OR REPRESENTED TO BE SUITABLE FOR ANY PURPOSE OTHER THAN THE SPECIFIC PROJECT, APPLICATION AND SITUATION FOR WHICH IT WAS INTENDED. ANY MODIFICATION OF THIS DRAWING OR DOCUMENT, OR ANY USE FOR ANY PROJECT, APPLICATION OR SITUATION OTHER THAN THAT FOR WHICH IT WAS INTENDED, WILL BE AT USER'S SOLE RISK AND WITHOUT LIABILITY TO CHAZEN ENGINEERING, LAND SURVEYING, LANDSCAPE ARCHITECTURE & GEOLOGY CO., D.P.C.

IT IS A VIOLATION OF NEW YORK STATE EDUCATION LAW FOR ANY PERSON TO ALTER THIS DRAWING OR DOCUMENT IN ANY WAY, UNLESS HE OR SHE IS ACTING UNDER THE DIRECTION OF A LICENSED DESIGN PROFESSIONAL (PROFESSIONAL ENGINEER, LAND SURVEYOR, ARCHITECT, LANDSCAPE ARCHITECT OR GEOLOGIST). IF THIS DRAWING OR DOCUMENT IS ALTERED, THE ALTERING DESIGN PROFESSIONAL SHALL AFFIX TO THE DRAWING OR DOCUMENT HIS OR HER SEAL, THE NOTATION "ALTERED BY" FOLLOWED BY HIS OR HER SIGNATURE, THE DATE OF SUCH ALTERATION, AND A SPECIFIC DESCRIPTION OF THE ALTERATION.

www.chazencompanies.com
(888) 528-9073

CHAZEN ENGINEERING, LAND SURVEYING,
LANDSCAPE ARCHITECTURE & GEOLOGY CO., D.P.C.

Office Locations

- Glens Falls, NY
- Troy, NY
- Poughkeepsie, NY
- White Plains, NY
- New York City, NY

Project to be Employee Owned

THE CHAZEN COMPANIES

2 05/23/22 REVISED PER TOWN COMMENTS

1 03/28/22 REVISED PER TOWN COMMENTS, GENERAL EDITS

rev. date description

1998 SOUTH ROAD - STORAGE FACILITY

LANDSCAPE PLAN

TOWN OF POUGHKEEPSIE, DUTCHESS COUNTY, NEW YORK

designed TUL
date 11/22/21
scale
project no. 82133.00
sheet no. C180