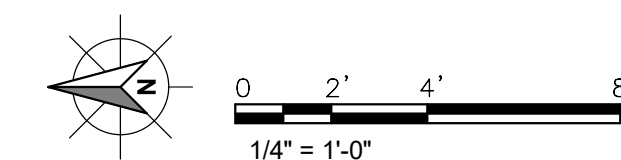
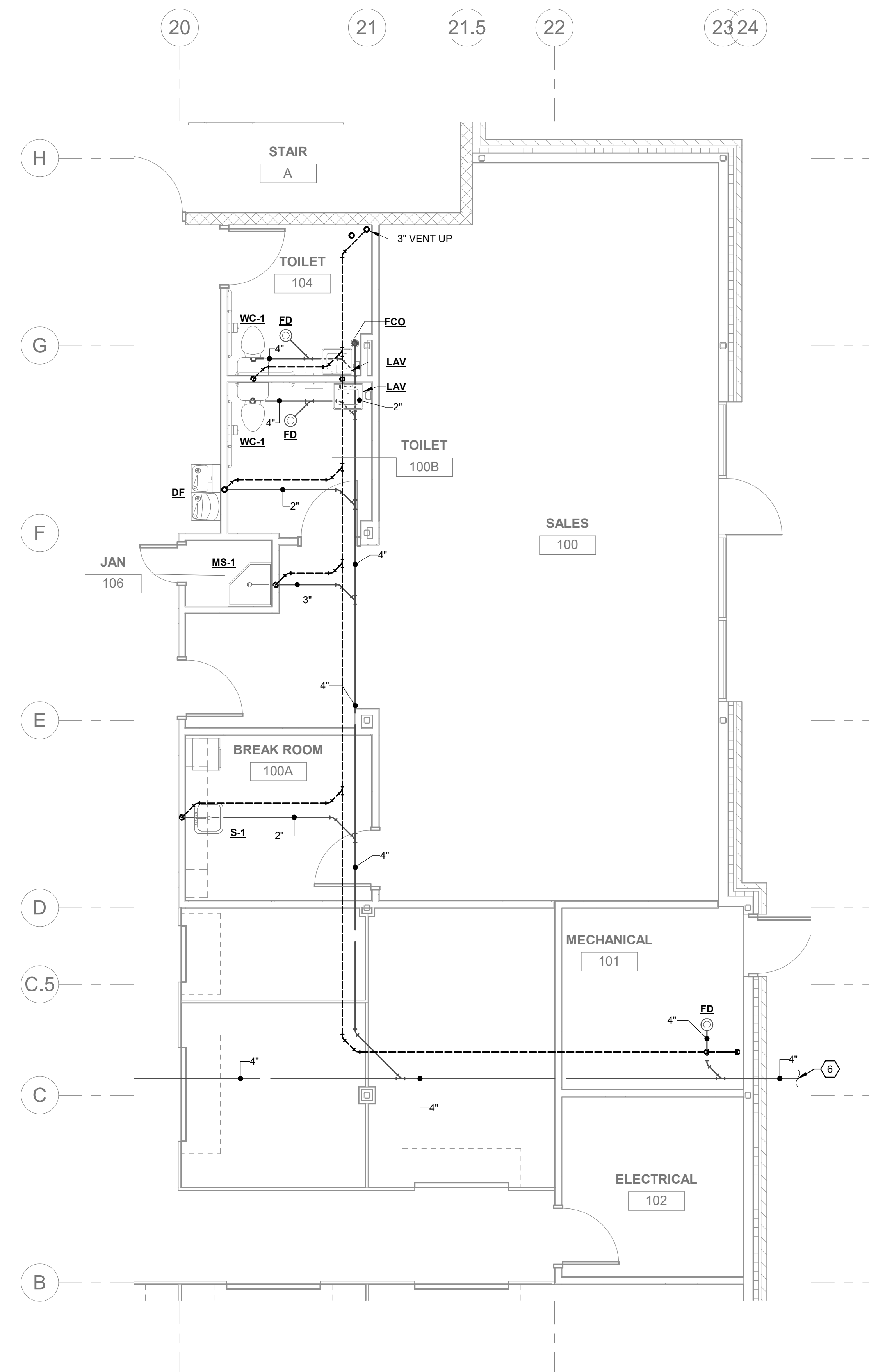
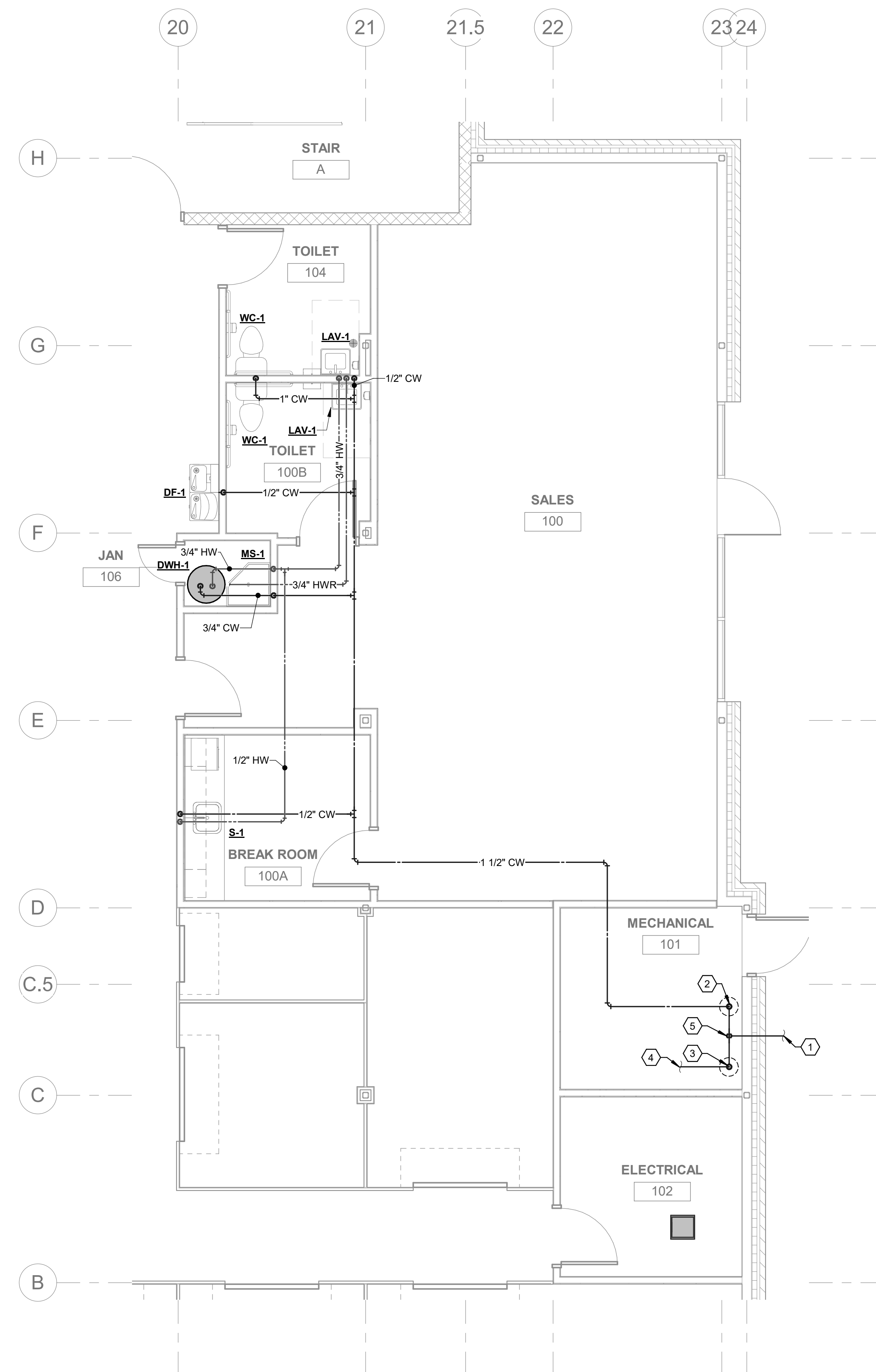


KEYED NOTES	
1	COMBINED WATER SERVICE TO 5'-0" BEYOND BUILDING. REFER TO CIVIL DRAWINGS FOR CONTINUATION. A A PLUMBING
2	DOMESTIC WATER BACKFLOW PREVENTER INSTALLED VERTICALLY. A A PLUMBING
3	FIRE SERVICE BACKFLOW PREVENTER INSTALLED VERTICALLY. A A PLUMBING
4	CONTINUE TO FIRE PROTECTION SYSTEM. A A PLUMBING
5	COMBINED WATER SERVICE UP THROUGH FLOOR SLAB. A A PLUMBING
6	4" SANITARY TO 5'-0" BEYOND BUILDING. REFER TO CIVIL DRAWINGS FOR CONTINUATION. A A PLUMBING



WARNING: it is a violation of the NYS Education Law Article 145 for any person to alter this document in anyway, unless they are acting under the direction of a Professional Engineer

ISSUED FOR PERMIT

POUGHKEEPSIE NY STORAGE

DIAMOND POINT DEVELOPMENT
1998 SOUTH ROAD POUGHKEEPSIE, NEW YORK 12601

DUTCHESS COUNTY

© 2020, SAArchitects, Inc.



FILE No.: 00 000

DATE: 01/10/2000

SCALE: **AS NOTED**

DRAWN BY:

DRAWING No.:

P-401