

REMOVAL NOTES:

1. THE SCOPE OF REMOVAL SHOWN ON "REMOVALS" DRAWINGS IS DIAGRAMMATIC ONLY AND INDICATES THE INTENT OF THE WORK TO BE PERFORMED AND NOT THE COMPLETE SCOPE OF DEMOLITION AND/OR REMOVAL WORK. IT SHALL BE THE RESPONSIBILITY OF THIS CONTRACTOR TO REMOVE ANY RELATED MECHANICAL DEVICES EVEN IF NOT SPECIFICALLY INDICATED TO BE REMOVED ON THESE DRAWINGS IN ORDER TO ACCOMMODATE NEW WORK.
2. DEVICES SHOWN CROSS HATCHED ON DRAWINGS ARE ITEMS TO BE REMOVED. ANY DEVICES REMOVED SHALL INCLUDE (BUT SHALL NOT BE LIMITED TO) THE REMOVAL OF ALL ASSOCIATED PIPING, CONTROLS, ETC. THAT ARE NOT INCORPORATED IN THE NEW LAYOUT. UNTIL SUCH REMOVAL IS COMPLETE, THIS CONTRACTOR SHALL PERFORM ALL WORK REQUIRED TO INSURE CONTINUITY OF SERVICE TO EXISTING REMAINING EQUIPMENT. NO EXTRAS RELATING TO THE SCOPE OF WORK DESCRIBED WILL BE ALLOWED.
3. EQUIPMENT, PIPING, ETC., REQUIRED TO RECONNECT SHALL BE INSTALLED CONCEALED WITHIN THE NEW SUSPENDED CEILINGS, PARTITIONS AND/OR WALLS, FLOORS. NO SURFACE MOUNTED OR EXPOSED EQUIPMENT, PIPING, ETC., SHALL BE PERMITTED, UNLESS SPECIFICALLY INDICATED.
4. ALL ITEMS TO BE REMOVED SHALL BE REVIEWED WITH THE OWNER PRIOR TO REMOVAL. OWNER SHALL HAVE FIRST SALVAGE RIGHTS. ITEMS THE OWNER WISHES TO KEEP SHALL BE REMOVED WITH CARE AND STORED AS DIRECTED BY OWNER. ITEMS THE OWNER DOES NOT WISH TO KEEP SHALL BE REMOVED FROM THE SITE AND DISPOSED OF PROPERLY.

LEGEND

	EXISTING DUCTWORK, EQUIPMENT, ETC. TO REMAIN
	EXISTING DUCTWORK, EQUIPMENT, ETC. TO BE REMOVED
	NEW DUCTWORK POINT OF CHANGE IN DUCT SIZE
	NEW DUCTWORK FLEXIBLE CONNECTION
	SQUARE DUCT TURN WITH TURNING VANES
	NEW 4-WAY CEILING DIFFUSER TYPE - SEE SCHEDULE
	CEILING EXHAUST/RETURN REGISTER TYPE - SEE SCHEDULE
	REGISTER/DIFFUSER IDENTIFICATION TYPE - SEE SCHEDULE
	DUCT DROP, DUCT RISE
	DUCT MTD. MANUAL AIR VOLUME DAMPER (W/LOCKING DEVICE)
	MOTORIZED AIR VOLUME DAMPER (W/ACCESS DOOR)
	FD & AD FIRE DAMPER (U.L. APPROVED) & ACCESS DOOR
	FD & AD COMBINATION FIRE/SMOKE DAMPER (U.L. APPROVED) & ACCESS DOOR
	EHWR EXISTING HOT WATER SUPPLY PIPING
	EHWS EXISTING HOT WATER RETURN PIPING
	HWR HOT WATER SUPPLY PIPING
	HWS HOT WATER RETURN PIPING
	L LIQUID REFRIGERANT PIPING
	S SUCTION REFRIGERANT PIPING
	HG HOT GAS REFRIGERANT PIPING
	CD CONDENSATE DRAIN PIPING
	FLOW DIRECTION WITHIN PIPE
	GATE VALVE (HORIZONTAL/VERTICAL)
	COMBINATION BALANCING & SHUT-OFF VALVE (CIRCUIT SETTER)
	CLEAN OUT
	PIPE CONNS. (BOTTOM, TOP 45 OR 90; PIPE UP)
	EF EXIST EXISTING EXHAUST FAN IDENTIFICATION
	B EXIST EXISTING BOILER IDENTIFICATION
	HWH EXIST EXISTING HOT WATER HEATER IDENTIFICATION
	CH EXIST EXISTING HOT WATER CABINET HEATER IDENTIFICATION
	CONV EXIST EXISTING CONVECTOR IDENTIFICATION
	HWP EXIST EXISTING HOT WATER PUMP IDENTIFICATION
	ERV EXIST ENERGY RECOVERY VENTILATOR IDENTIFICATION
	HP EXIST AIR SOURCE HEAT PUMP UNIT IDENTIFICATION
	FC EXIST FAN COIL UNIT IDENTIFICATION
	FS EXIST VRF FLOW SELECTOR UNIT IDENTIFICATION
	CH EXIST HOT WATER CABINET HEATER IDENTIFICATION
	UH EXIST HOT WATER UNIT HEATER IDENTIFICATION
	EF EXIST EXHAUST FAN IDENTIFICATION
	HWP EXIST HOT WATER PUMP IDENTIFICATION
	TYPE NEW FIN TUBE RADIATION IDENTIFICATION ELEMENT LENGTH
	EBB EXIST EXISTING ELECTRIC BASEBOARD IDENTIFICATION
	Ts -TO CONTROLLED ITEM WALL MTD.(5'-2"± A.F.F-U.O.N.) TEMPERATURE SENSOR
	CO2 -TO CONTROLLED ITEM WALL MTD.(5'-2"± A.F.F-U.O.N.) CARBON DIOXIDE SENSOR
	-U- DOOR UNDERCUT
	SMRE POWDER COATED SHEET METAL RISER ENCLOSURE
	ATC AUTOMATIC TEMPERATURE CONTROLS
	CD CEILING DIFFUSER
	CR CEILING REGISTER
	TR TOP WALL REGISTER
	CFM CUBIC FEET PER MINUTE
	OA/FAI OUTSIDE (FRESH) AIR INTAKE
	MD MOTORIZED DAMPER
	HVAC HEATING, VENTILATING, AIR CONDITIONING CONTRACTOR
	GC GENERAL TRADES CONTRACTOR
	FC FLEXIBLE CONNECTION
	FSC FULL SIZE CONNECTION
	AD ACCESS DOOR
	WMG 1/2" SQ. WIRE MESH GRILLE
	FD FIRE DAMPER
	VIF VERIFY IN FIELD
	SECTION/DETAIL/ELEVATION/PART PLAN NUMBER
	DRAWING NUMBER
	SECTION/ELEVATION IDENTIFICATION

PROFESSIONAL DEVELOPMENT CENTER

NYACK UFSD

13A DICKINSON AVE
NYACK, NY 10960

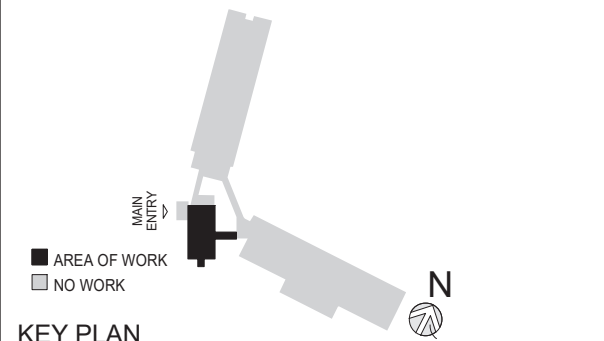
KG+D listen imagine build
KG+D . ARCHITECTS PC
285 MAIN STREET MOUNT KISCO . NEW YORK . 10549
P:914.666.5900 KGDARCHITECTS.COM

bgo
BARILE GALLAGHER & ASSOCIATES
CONSULTING ENGINEERS
39 MARBLE AVE. PLEASANTVILLE, NY 10570
PHONE: 914.328.6040 FAX: 914.328.9304 General@BGA-Eng.com

NY SED PROJECT CONTROL NO.

66-23-00-01-0-008-011

CONSTRUCTION DOCUMENTS



KEY PLAN

NOTE: ALL IDEAS, DESIGNS, ARRANGEMENTS AND PLANS INDICATED OR REPRESENTED BY THIS DRAWING ARE OWNED BY AND ARE THE PROPERTY OF KAEYER, GARMENT, & DAVIDSON ARCHITECTS, PC (KGAD), AND WERE CREATED FOR USE ON THIS PROJECT. NONE OF SUCH IDEAS, DESIGNS, ARRANGEMENTS OR PLANS SHALL BE USED BY OR DISCLOSED TO ANY PURPOSE WHATSOEVER WITHOUT THE WRITTEN PERMISSION OF (KGAD).

WRITTEN DIMENSIONS ON THIS DRAWING SHALL HAVE PRECEDENCE OVER SCALED DIMENSIONS. CONTRACTOR SHALL VERIFY ALL ACTUAL DIMENSIONS AND CONDITIONS ON THE JOB AND THE ARCHITECT MUST BE NOTIFIED OF ANY VARIATIONS FROM DIMENSIONS AND CONDITIONS SHOWN. SHOP DETAILS MUST BE SUBMITTED TO THIS OFFICE FOR APPROVAL, BEFORE PROCEEDING WITH FABRICATION.

ALTERATIONS BY ANY PERSON, IN ANY WAY, OF ANY ITEM CONTAINED ON THIS DOCUMENT, UNLESS ACTING UNDER THE DIRECTION OF THE LICENCED ARCHITECT WHOSE PROFESSIONAL SEAL IS AFFIXED HERETO, IS A VIOLATION OF TITLE VII, SECT. (b) 5 (b) OF NEW YORK STATE LAW.

COPYRIGHT KAEYER, GARMENT & DAVIDSON ARCHITECTS & ENGINEERS, PC. ALL RIGHTS RESERVED.

Professional Seal

No.	Date	Issue
3	2022-10-12	ISSUE FOR REBID
2	2022-07-12	ISSUE FOR BID
1	2022-03-24	CONSTRUCTION DOCUMENTS

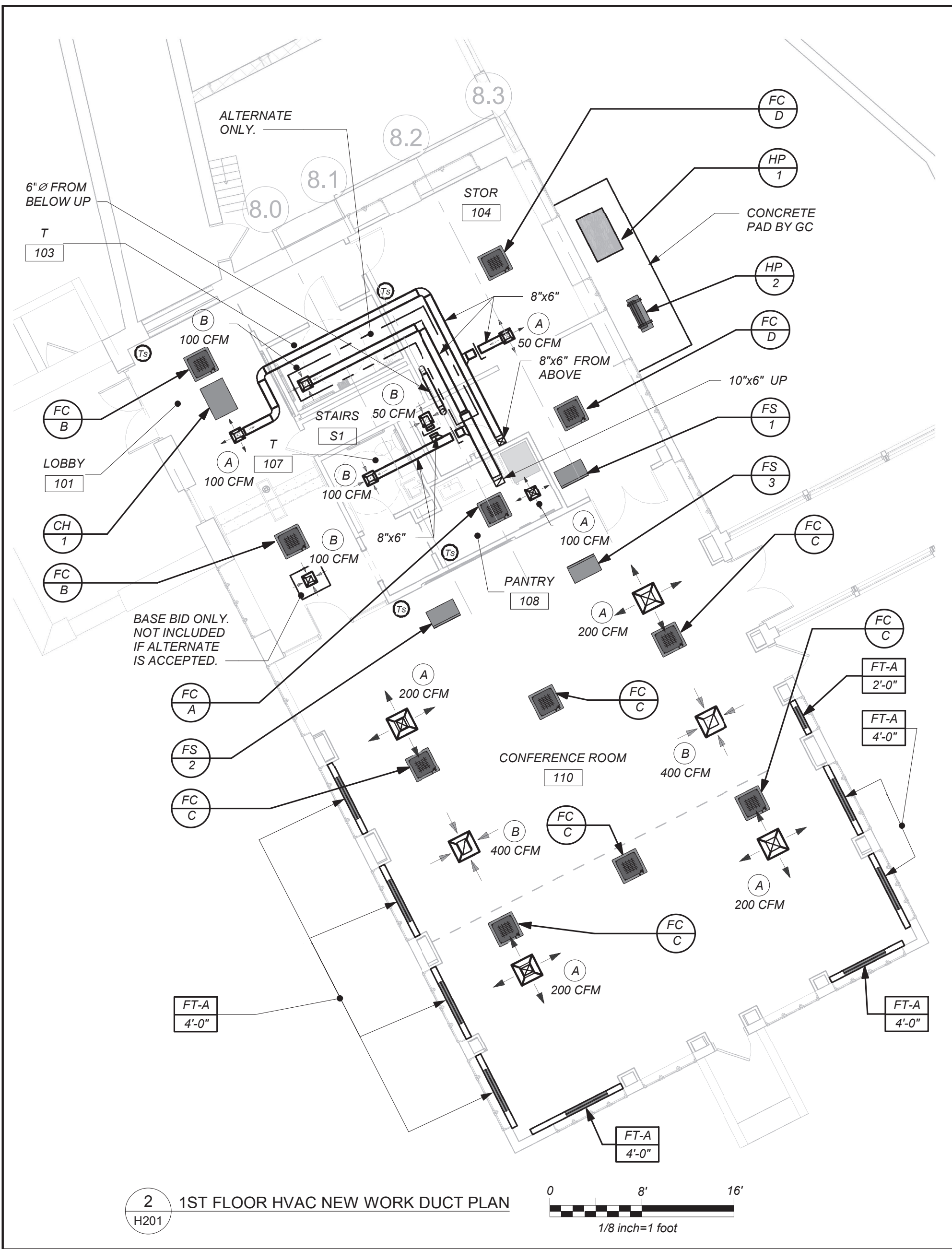
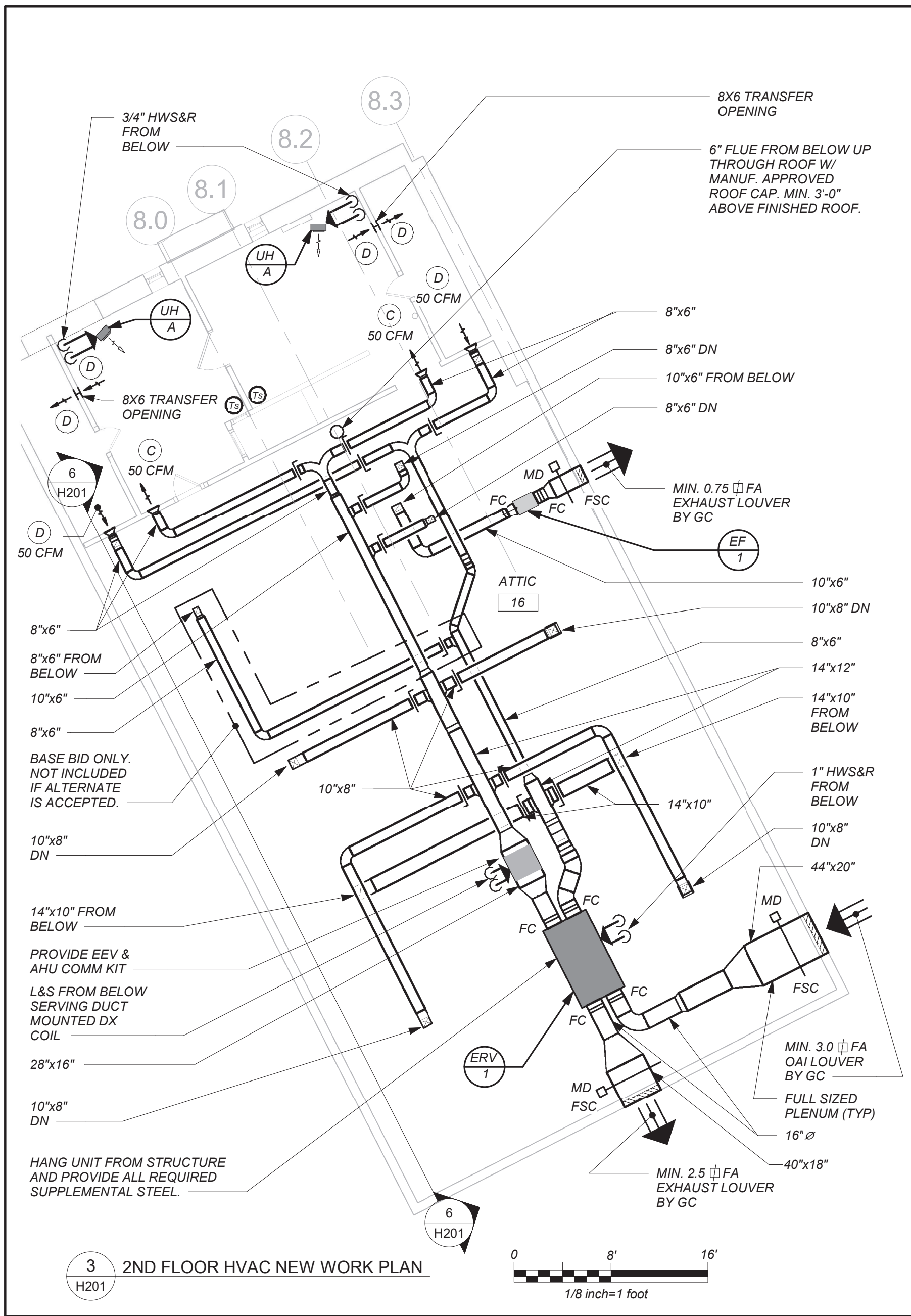
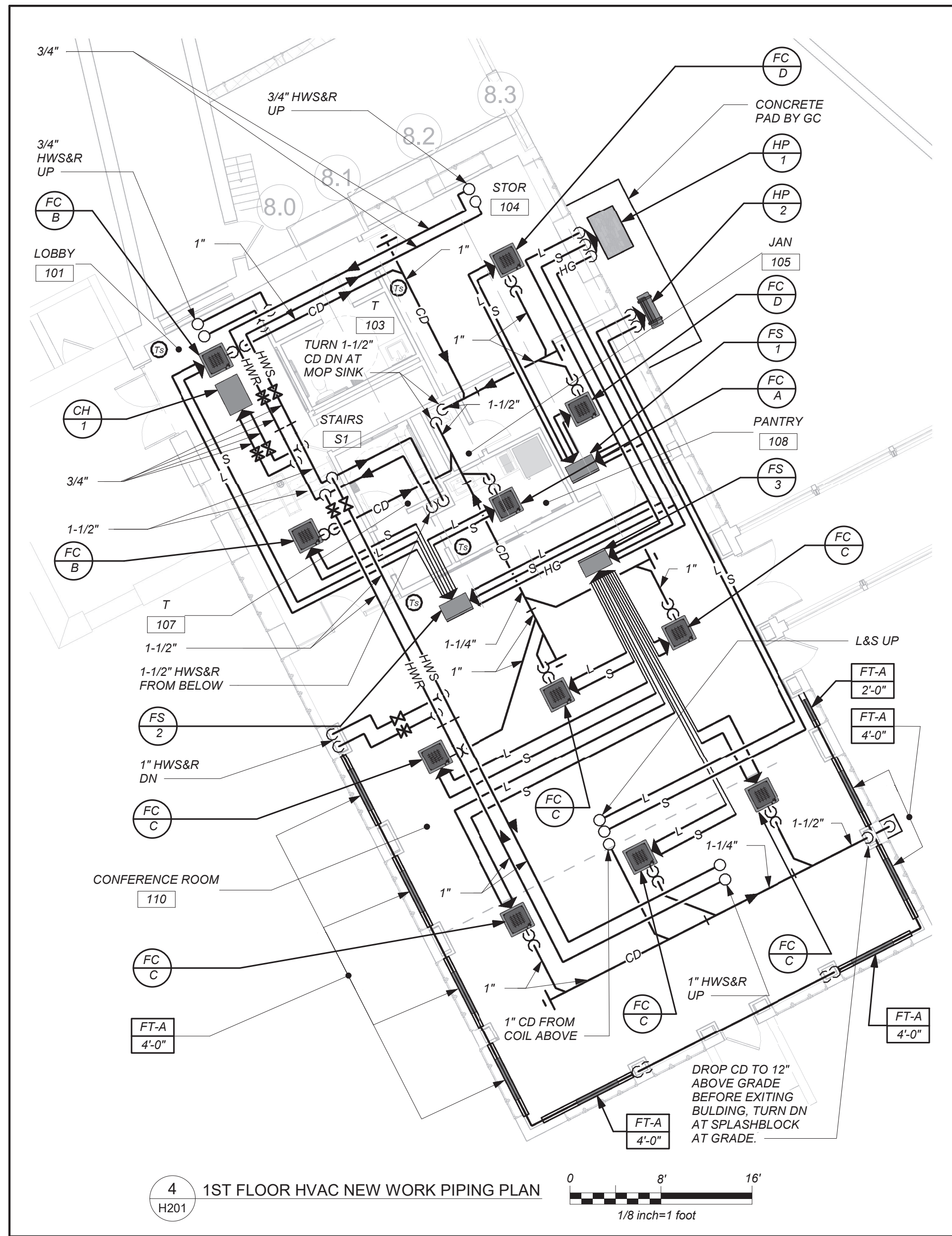
Sheet Title

LEGEND, NOTES, & PART BASEMENT, 1ST, & 2ND FLOOR PLANS (REMOVALS)

Job No.	2021-1048	Date	09/10/2021
Scale	AS NOTED	Drawn / Checked	BGA / BGA

Sheet Number

H101

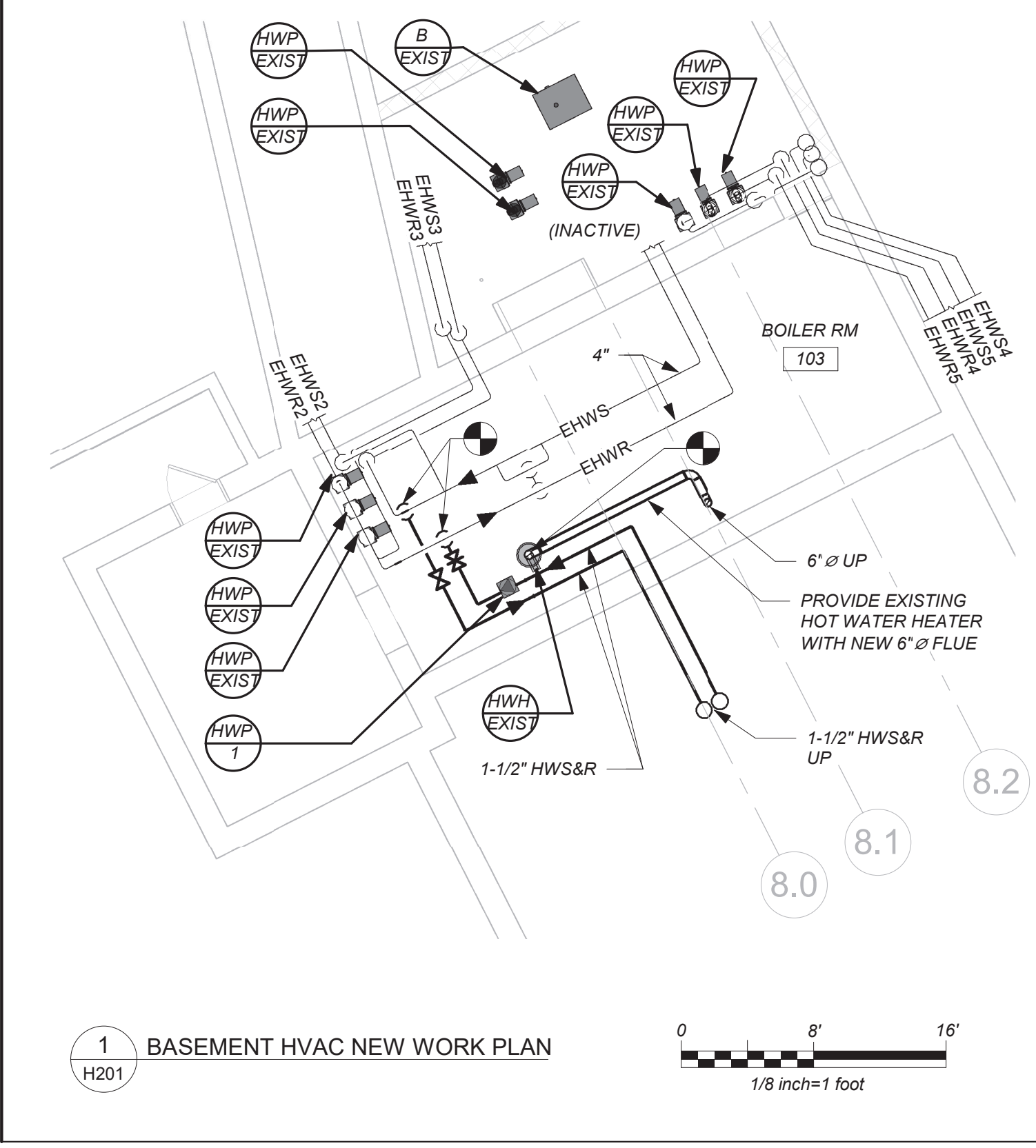
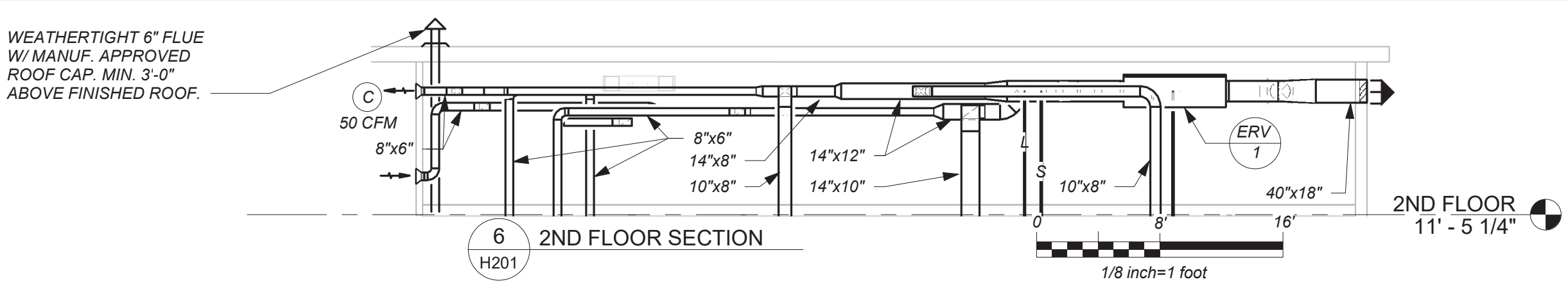
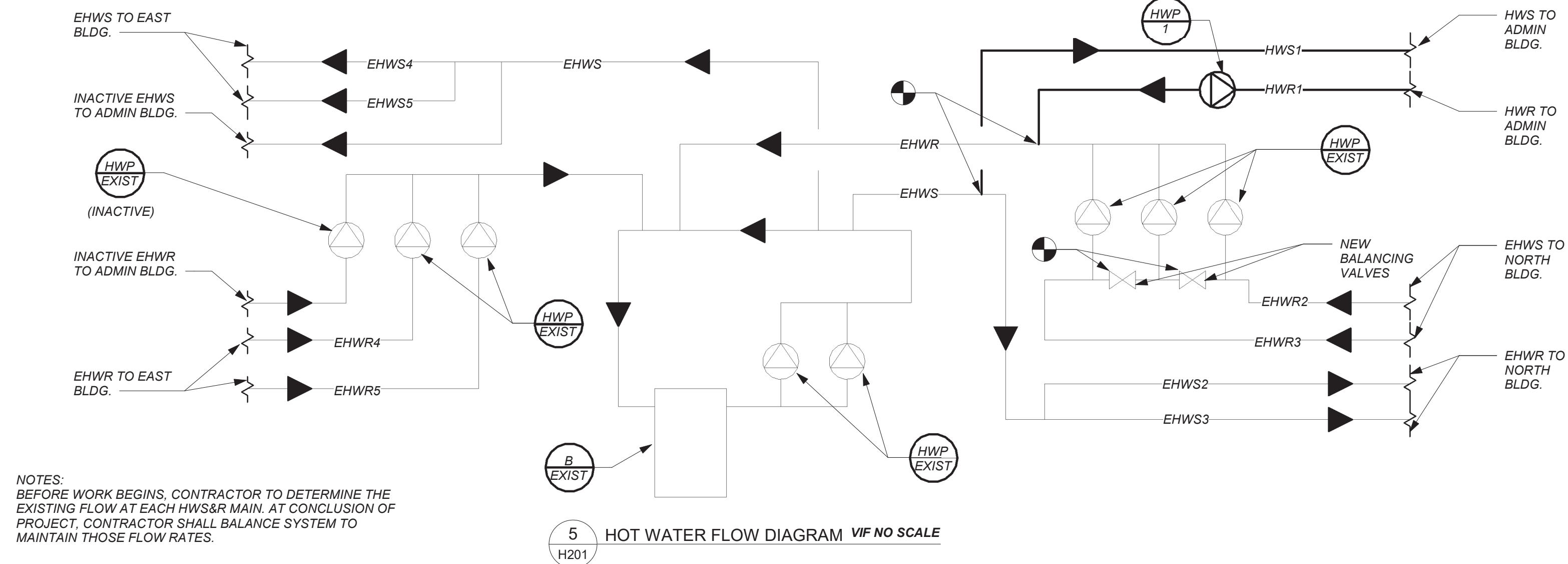


VRF SYSTEMS:

THE CONTRACTOR SHALL RETAIN THE SERVICES OF THE MANUFACTURER'S REPRESENTATIVE FOR PURPOSES OF PROVIDING REFRIGERANT PIPING SIZING. CONTRACTOR SHALL PROVIDE PIPING FROM RESPECTIVE OUTDOOR UNIT TO EACH NEW INDOOR UNIT, FOR COMPLETE AND OPERABLE SYSTEMS.

CONDENSATE PIPING:

PROVIDE CONDENSATE PIPING FOR ALL INDOOR FAN COIL EVAPORATOR UNITS AND AIR HANDLER CONDENSATE PANS.



BEFORE FABRICATION THIS CONTRACTOR SHALL VERIFY ALL MEASUREMENTS AND CONDITIONS ON JOB AND COORDINATE HIS WORK WITH THE WORK OF ALL THE OTHER CONTRACTORS

PROFESSIONAL DEVELOPMENT CENTER

NYACK UFSD

13A DICKINSON AVE
NYACK, NY 10960

KG+D listen imagine build
KG+D . ARCHITECTS PC
285 MAIN STREET MOUNT KISCO . NEW YORK . 10549
P: 914.666.5900 KGDARCHITECTS.COM

bgo
BARILE GALLAGHER & ASSOCIATES
CONSULTING ENGINEERS
39 MARBLE AVE. PLEASANTVILLE, NY 10570
PHONE: 914.328.6040 FAX: 914.328.9304 General@BGA-Eng.com

NY SED PROJECT CONTROL NO.

66-23-00-01-0-008-011

CONSTRUCTION DOCUMENTS

KEY PLAN

NOTE: ALL IDEAS, DESIGNS, ARRANGEMENTS AND PLANS INDICATED OR REPRESENTED BY THIS DRAWING ARE OWNED BY AND ARE THE PROPERTY OF KAEPER, GARMENT, & DAVIDSON ARCHITECTS, PC (KGAD), AND WERE CREATED FOR USE ON THIS PROJECT. NONE OF SUCH IDEAS, DESIGNS, ARRANGEMENTS OR PLANS SHALL BE USED BY OR DISCLOSED TO ANY PURPOSE WHATSOEVER WITHOUT THE WRITTEN PERMISSION OF KGAD.

WRITTEN DIMENSIONS ON THIS DRAWING SHALL HAVE PRECEDENCE OVER SCALED DIMENSIONS. CONTRACTOR SHALL VERIFY ALL ACTUAL DIMENSIONS AND CONDITIONS ON THE JOB AND THE ARCHITECT MUST BE NOTIFIED OF ANY VARIATIONS FROM DIMENSIONS AND CONDITIONS SHOWN. SHOP DETAILS MUST BE SUBMITTED TO THIS OFFICE FOR APPROVAL, BEFORE PROCEEDING WITH FABRICATION.

ALTERATIONS BY ANY PERSON, IN ANY WAY, OF ANY ITEM CONTAINED ON THIS DOCUMENT, UNLESS ACTING UNDER THE DIRECTION OF THE LICENSED ARCHITECT WHOSE PROFESSIONAL SEAL IS AFFIXED HERETO, IS A VIOLATION OF TITLE V.E. SECT. 60.5 (b) OF NEW YORK STATE LAW. COPYRIGHT KAEPER, GARMENT & DAVIDSON ARCHITECTS & ENGINEERS, PC. ALL RIGHTS RESERVED.

Professional Seal

3	2022-10-12	ISSUE FOR REBID
2	2022-07-12	ISSUE FOR BID
1	2022-03-24	CONSTRUCTION DOCUMENTS

No. Date Issue

PART BASEMENT, 1ST, & 2ND FLOOR PLANS (NEW WORK)

Job No. 2021-1048 Date 09/10/2021

Scale AS NOTED Drawn / Checked BGA / BGA

Sheet Number

H201

SCHEDULE OF ENERGY RECOVERY VENTILATORS

GENERAL DATA				SUPPLY FAN DATA		EXHAUST FAN DATA		ELECTRICAL DATA			HEAT EXCHANGER		HOT WATER COIL ④						DX COIL ⑤			FILTER DATA			PHYSICAL DATA				REMARKS
MARK	SERVICE	LOCATION	MODEL No. ①	OUTSIDE AIR CFM	EXT. S.P. IN WG	CFM	EXT. S.P. IN WG	MCA	MOP	ELECTRICAL SERVICE	TYPE	EFFIC.	CAP. MBH	EAT (°F)	LAT (°F)	COIL FACE VELOCITY FPM	ROWS	GPM	TOTAL CLG. CAP. BTU/HR	ENT. AIR TEMP. CLG.	LVG. AIR TEMP. CLG.	QTY.	SIZE (IN.)	CLASS	L (in.)	W (in.)	H (in.)	WEIGHT (LBS)	
⑦①	PROFESSIONAL DEV. CENTER	ATTIC 16	FR1600HW-208-3-CAV	1,100	1.25	950(850)	1.25	6.1	15	208/3/60	WHEEL	75	72.6	35	95	475	1	7	24,000	95	75	2	17X13X17	OA MERV 13 RET. MERV 9	86	44	26	575	

NOTES

①

AS MANUFACTURED BY "TOPVEX."

②

INSTALL PER MANUFACTURER'S RECOMMENDATIONS.

③

VALUES SHOWN IN PARENTHESIS () ARE FOR ALTERNATE ONLY.

④

INTEGRAL HOT WATER COIL. PROVIDE FREEZE STAT.
E.W.T.=180° F. L.W.T.=160° F.

⑤

BASED ON A.R.I. CERTIFIED COIL SELECTIONS; REFRIGERANT R-410A.

⑥

HUNG UNIT WITH INTEGRAL HIGH CAPACITY HOT WATER COIL AND DUCT MOUNTED DX COIL. PROVIDE VIBRATION ISOLATORS EXHAUST/DEFROST CONTROLS, LOW TEMPERATURE LIMIT CONTROLS, DIFFERENTIAL ENTHALPY ECONOMIZER CONTROLS, MOTORIZED OA AND EA DAMPERS, DIRTY FILTER CONTACTS, PHASE PROTECTION, DISCONNECT SWITCH, AND CONVENIENCE OUTLET. TIE INTO BMS.

⑦

INDICATED EQUIPMENT DESIGNATIONS ARE FOR USE IN CONSTRUCTION ONLY. CONTRACTOR SHALL COORDINATE WITH OWNER ON DESIRED FINAL TAG IDENTIFICATION/NUMBERING/LETTERING. OWNER APPROVED DESIGNATIONS SHALL BE USED IN BMS PROGRAMMING AND ON PERMANENT EQUIPMENT IDENTIFICATION TAGS. AS-BUILT DRAWINGS SHALL BE UPDATED WITH FINAL IDENTIFICATION TAG DESIGNATIONS.

3-WAY CONTROL VLV.

AIR VENT

HWR

COIL

COMB. BAL. & SHUT-OFF VLV.

HWS

GATE VLV.

DRAIN VALVE

UNION (TYP.)

TYPICAL HOT WATER HEATING COIL PIPING CONNS.

SCHEDULE OF MINIMUM VENTILATION ROOM FLOW RATES

		A	B	C	D	E	F	G	H	I	
ROOM NAME/NUMBER	OCCUPANCY CATEGORY	ROOM AREA (SQ.FT.)	PEOPLE DENSITY (#/1000 SQ.FT.)	PEOPLE OUTDOOR AIR FLOW RATE (CFM/PERSON)	AREA OUTDOOR AIR FLOW RATE IN BREATHING ZONE (CFM/SQ.FT.)	EXHAUST AIR FLOW RATE (CFM/SQ.FT.)	NUMBER OF PEOPLE (A×B)÷1000=HP	OUTDOOR AIR FLOW RATE WITHOUT ZONE EFFECTIVENESS FACTOR (F×C)÷(A×D)=CFM	ZONE AIR DISTRIBUTION EFFECTIVENESS FACTOR	MINIMUM ROOM VENTILATION AIR FLOW RATE G+H=CFM	MINIMUM EXHAUST AIR FLOW RATE A×E=CFM
Lobby/101	MAIN ENTRY LOBBIES	300	10	5	0.06	0	3	33	0.8	41	0
Stor/105	OCCUPIABLE STORAGE ROOMS FOR DRY MATERIALS	310	2	5	0.06	0	1	24	0.8	30	0
Pantry/109	KITCHENETTES	100	20	7.5	0.12	0.3	2	27	0.8	34	30
Conf/110	CONFERENCE/MEETING	1785	50	5	0.06	0	90	557	0.8	696	0
Second Floor Storage	OCCUPIABLE STORAGE ROOMS FOR DRY MATERIALS	300	2	5	0.06	0	1	23	0.8	29	0
Second Floor Storage	OCCUPIABLE STORAGE ROOMS FOR DRY MATERIALS	300	2	5	0.06	0	1	23	0.8	29	0

SCHEDULE OF REGISTERS AND DIFFUSERS

MARK	TYPE	SERVICE	MODEL No. ①	NOMINAL FACE SIZE	DIRECTION DISCHARGE	DAMPER TYPE	FINISH	REMARKS																											
Ⓐ	CEILING DIFFUSER	SUPPLY	SCD	12X12/24X24	FOUR-WAY	OPPOSED BLADE	PER ARCH.	REFER TO ②③④⑤																											
Ⓑ	CEILING REGISTER	RETURN/EXHAUST	635	8X4/24X24	—	OPPOSED BLADE	PER ARCH.	REFER TO ②③④⑥																											
Ⓒ	SIDE WALL REGISTER	SUPPLY	620	8X4	DOUBLE DEFLECTION	OPPOSED BLADE	PER ARCH.	REFER TO ②③④⑤																											
Ⓓ	SIDE WALL REGISTER	RETURN/EXHAUST	635	8X4	—	OPPOSED BLADE	PER ARCH.	REFER TO ②③④⑥																											
NOTES	① AS MANUFACTURED BY "PRICE".																																		
	② INSTALL PER MANUFACTURERS RECOMMENDATIONS.																																		
	③ PROVIDE CABLE OPERATED DAMPERS IN UN-ACCESSIBLE AREAS.																																		
	④ PROVIDE MOUNTING FRAME COMPATIBLE W/ MOUNTING SURFACE. COORDINATE ALL BORDER TYPES, COLORS, FINISHES AND DIMENSIONS WITH ARCHITECT.																																		
	⑤ SUPPLY NECK SIZE PER CFM RANGE (NOT TO EXCEED 700 fpm)																																		
⑥ RETURN NECK SIZE PER CFM RANGE (NOT TO EXCEED 675 fpm)																																			
<table><tr><td>50 TO 135</td><td>100 TO 245</td><td>246 TO 380</td><td>381 TO 550</td><td>551 TO 750</td><td>751 TO 860</td><td>50 TO 149</td><td>150 TO 249</td><td>250 TO 399</td><td>400 TO 599</td><td>600 TO 799</td><td>800 TO 1099</td><td>1100 TO 1199</td><td>1200 TO 2399</td></tr><tr><td>6"ø</td><td>8"ø</td><td>10"ø</td><td>12"ø</td><td>14"ø</td><td>15"ø</td><td>6x6</td><td>8x8</td><td>10x10</td><td>12x12</td><td>14x14</td><td>16x16</td><td>18x18</td><td>24x24</td></tr></table>								50 TO 135	100 TO 245	246 TO 380	381 TO 550	551 TO 750	751 TO 860	50 TO 149	150 TO 249	250 TO 399	400 TO 599	600 TO 799	800 TO 1099	1100 TO 1199	1200 TO 2399	6"ø	8"ø	10"ø	12"ø	14"ø	15"ø	6x6	8x8	10x10	12x12	14x14	16x16	18x18	24x24
50 TO 135	100 TO 245	246 TO 380	381 TO 550	551 TO 750	751 TO 860	50 TO 149	150 TO 249	250 TO 399	400 TO 599	600 TO 799	800 TO 1099	1100 TO 1199	1200 TO 2399																						
6"ø	8"ø	10"ø	12"ø	14"ø	15"ø	6x6	8x8	10x10	12x12	14x14	16x16	18x18	24x24																						

SCHEDULE OF EXHAUST FANS

MARK	SERVICE	LOCATION	TYPE	MODEL No. ①	CFM	EXT. S.P. IN H ₂ O	RPM	HP	ELECTRIC SERVICE	LxWxH (IN.)	WEIGHT (LBS.)	REMARKS
⑦①	TOILET ROOMS	ATTIC 16	IN-LINE	SQ-97-VG	150(250)	1.0	1819 (2075)	1/2	120/1/60	21x15x15	52	REFER TO ②③④
<div><div>NOTES</div><div><p>① AS MANUFACTURED BY "GREENHECK."</p><p>② INSTALL PER MANUFACTURER'S RECOMMENDATIONS.</p><p>③ VALUES SHOWN IN PARENTHESIS () ARE FOR ALTERNATE ONLY.</p><p>④ PROVIDE DISCONNECT SWITCH, BACKDRAFT DAMPER, VIBRATION ISOLATORS, SPEED CONTROL, AND NAMEPLATE IDENTIFYING FAN MARK, MODEL NO., CFM, RPM, HP, AND ELECTRICAL SERVICE.</p></div></div>												

SCHEDULE OF UNIT HEATERS

MARK	MODEL No. ①	CAPACITY DATA				MOTOR WATTS	ELECTRIC SERVICE	PHYSICAL DATA		REMARKS
		BTU/HR	EW T °F	LWT °F	GPM			LxWxH	WEIGHT (LBS)	
⑦①A	HS-36	20,100	180	160	3	25	120/1/60	15"x10"x18"	40	REFER TO ②③
<div><div>NOTES</div><div><p>① AS MANUFACTURED BY "STERLING".</p><p>② INSTALL PER MANUFACTURER'S RECOMMENDATIONS</p><p>③ PROVIDE UNIT MOUNTED MANUAL VARIABLE SPEED CONTROLLER, REMOTE WALL SENSOR, DISCONNECT SWITCH, AND MOUNTING HARDWARE.</p></div></div>										

SCHEDULE OF PUMPS

MARK	SERVICE	LOCATION	MODEL No. ①	GPM	HEAD FT. H ₂ O	RPM	MOTOR HP	ELECTRIC SERVICE	REMARKS
⑦①A	CONFERENCE BLDG	BOILER ROOM	SERIES E-90 1AAB	17	25	1800	1/2	208/1/60	REFER TO ②③④
<div><div>NOTES</div><div><p>① AS MANUFACTURED BY "BELL & GOSSETT".</p><p>② INSTALL PUMPS PER MANUFACTURER'S RECOMMENDATIONS.</p><p>③ PROVIDE ECM PERMANENT MAGNET VARIABLE SPEED MOTOR WITH MOUNTED USER INTERFACE, DISCONNECT SWITCH, AND STEEL BRAIDED FLEXIBLE CONNECTIONS</p><p>④ PUMP DIMENSIONS 8" W x 12" L x 16" H / WEIGHT 55 LBS</p></div></div>									

BEFORE FABRICATION THIS CONTRACTOR SHALL VERIFY ALL MEASUREMENTS AND CONDITIONS ON JOB AND COORDINATE HIS WORK WITH THE WORK OF ALL OTHER CONTRACTORS

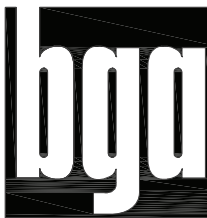
PROFESSIONAL DEVELOPMENT CENTER

NYACK UFSD

13A DICKINSON AVE
NYACK, NY 10960

KG+D listen imagine build

KG+D . ARCHITECTS PC
285 MAIN STREET MOUNT KISCO, NEW YORK . 10649
P:914.666.5900 KGDARCHITECTS.COM



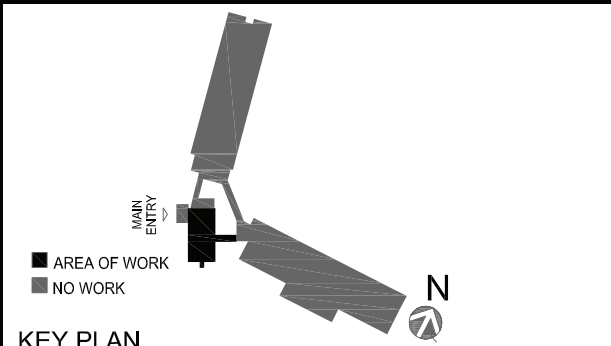
BARILE GALLAGHER & ASSOCIATES

CONSULTING ENGINEERS
39 MARBLE AVE. PLEASANTVILLE, NY 10570
914.328.6600 GENERAL@BGA-ENG.COM www.BGA-ENG.COM

NY SED PROJECT CONTROL NO.

66-23-00-01-0-008-011

CONSTRUCTION DOCUMENTS



KEY PLAN

NOTE: ALL IDEAS, DESIGNS, ARRANGEMENTS AND PLANS INDICATED OR REPRESENTED BY THIS DRAWING ARE OWNED BY AND ARE THE PROPERTY OF KATYER, GANNETT & DAVENSON ARCHITECTS, PC (KG&D), AND WERE CREATED FOR USE ON THIS PROJECT. NONE OF SUCH IDEAS, DESIGNS, ARRANGEMENTS OR PLANS SHALL BE USED BY OR DISCLOSED TO ANY PURPOSE WHATSOEVER WITHOUT THE WRITTEN PERMISSION OF (KG&D).

WRITTEN DIMENSIONS ON THIS DRAWING SHALL HAVE PRECEDENCE OVER SCALED DIMENSIONS. CONTRACTOR SHALL VERIFY ALL ACTUAL DIMENSIONS AND CONDITIONS ON THE JOB AND THE ARCHITECT MUST BE NOTIFIED OF ANY VARIATIONS FROM DIMENSIONS AND CONDITIONS SHOWN. SHOP DETAILS MUST BE SUBMITTED TO THIS OFFICE FOR APPROVAL BEFORE PROCEEDING WITH FABRICATION.

ALTERATIONS BY ANY PERSON, IN ANY WAY, OF ANY ITEM CONTAINED ON THIS DOCUMENT, UNLESS ACTING UNDER THE DIRECTION OF THE LICENSED ARCHITECT WHOSE PROFESSIONAL SEAL IS AFFIXED HERETO, IS A VIOLATION OF TITLE VII, SECT. 60.0 (5) OF NEW YORK STATE LAW. COPYRIGHT KATYER, GANNETT & DAVENSON ARCHITECTS & ENGINEERS, PC. ALL RIGHTS RESERVED.

Professional Seal

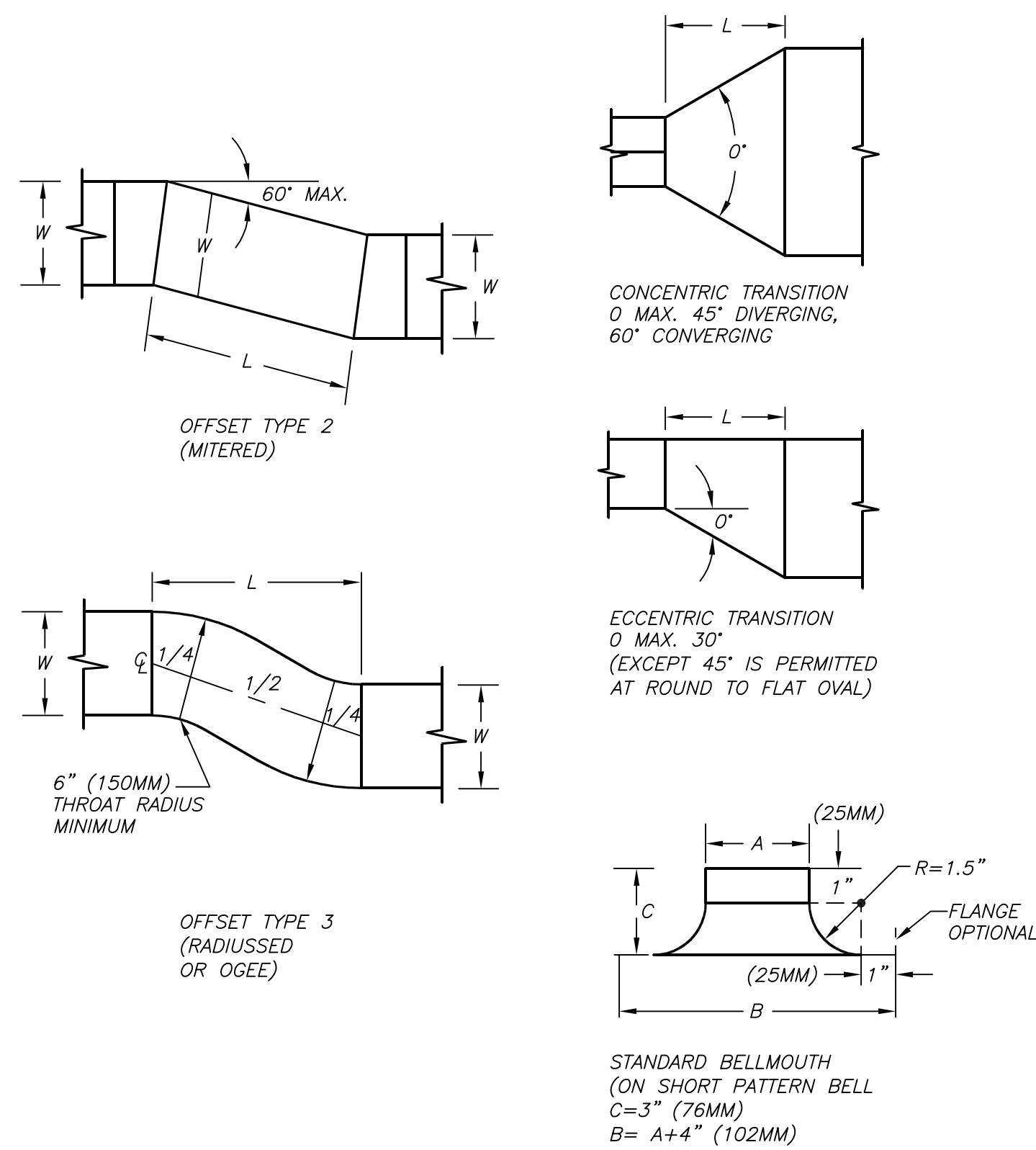
3	2022-10-12	ISSUE FOR REBID
2	2022-07-12	ISSUE FOR BID
1	2022-03-24	CONSTRUCTION DOCUMENTS

No.	Date	Issue
Sheet Title		

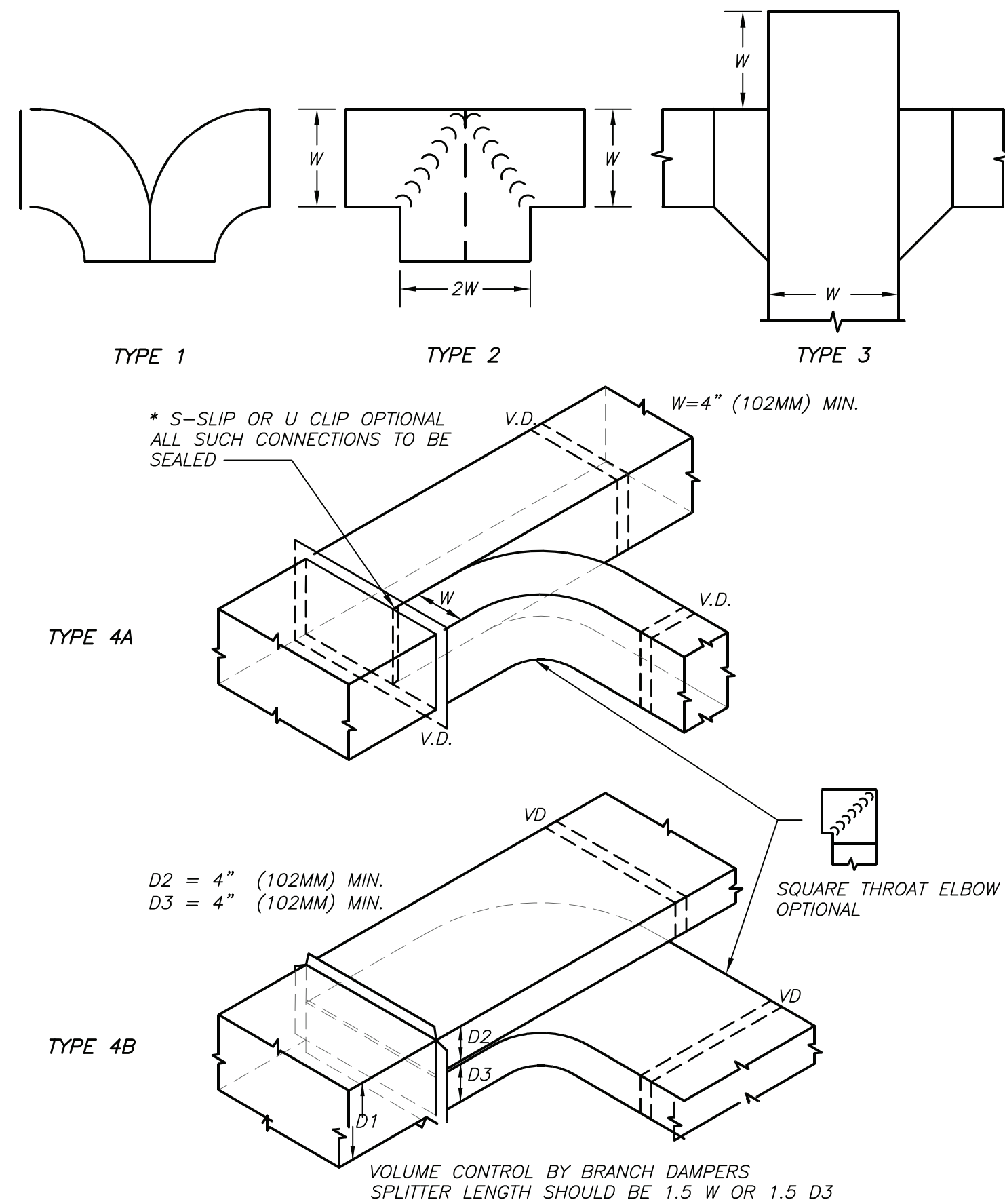
SCHEDULES

Job No.	2021-1048	Date	09/10/2021
Scale	AS NOTED	Drawn / Checked	BGA / BGA
Sheet Number			

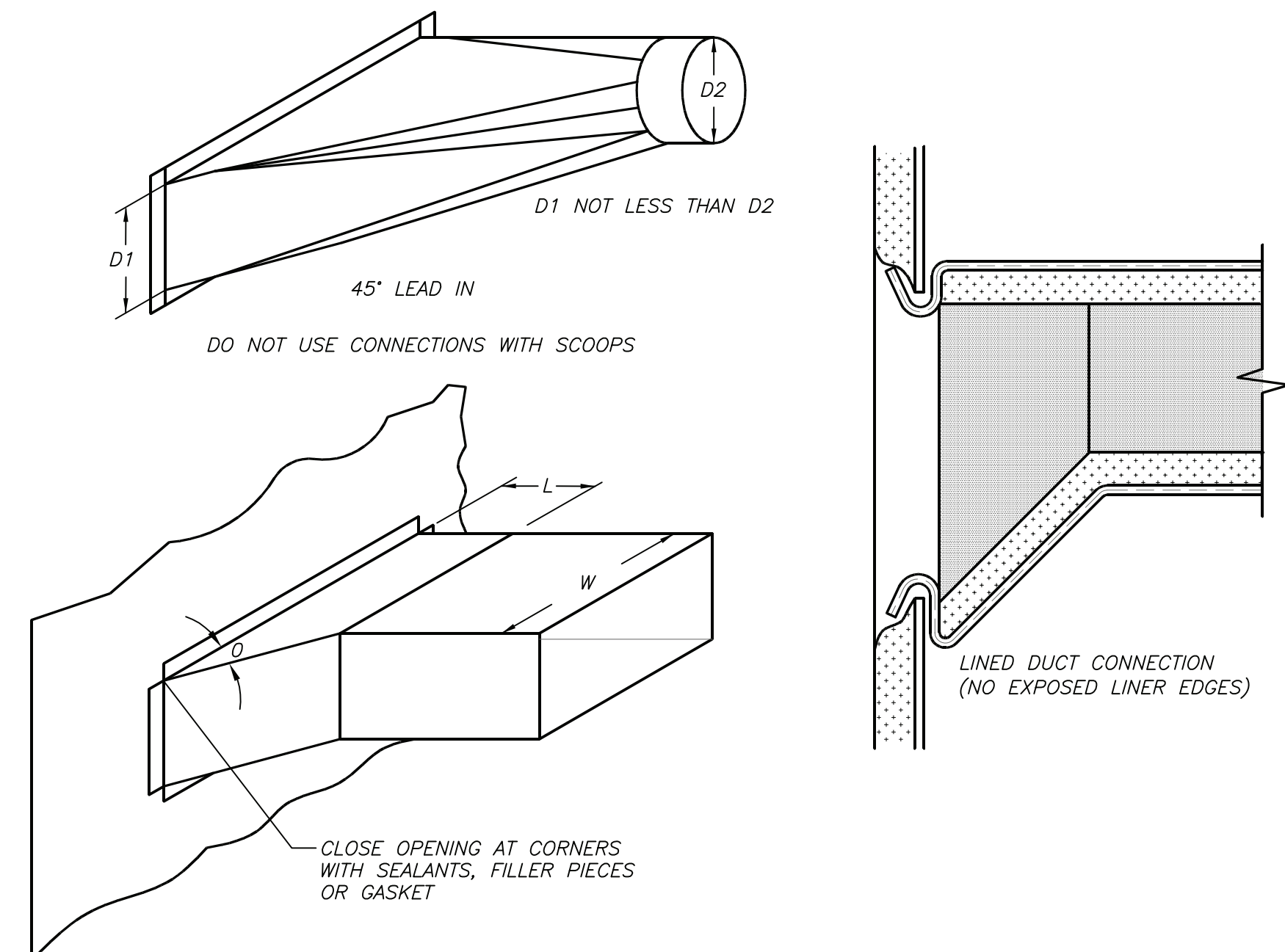
H301



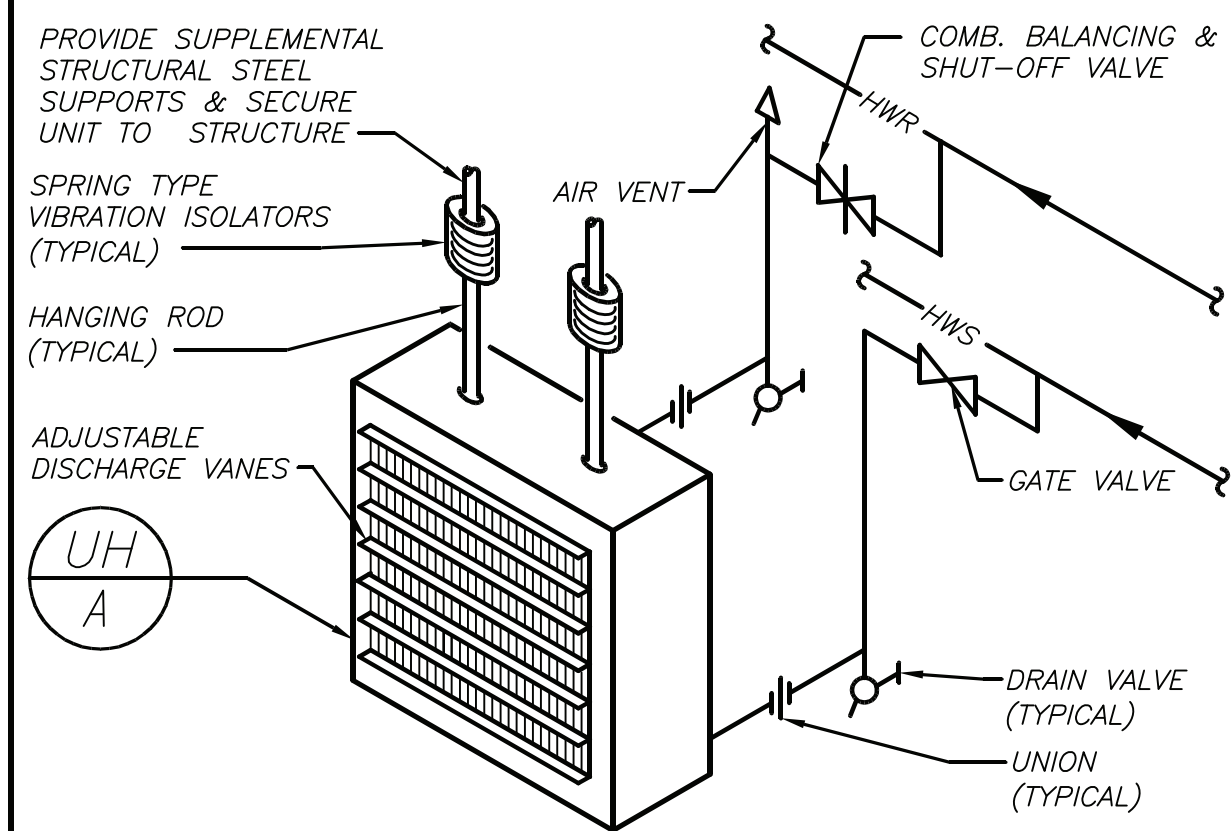
DUCT OFFSETS AND TRANSITIONS DETAIL **7** **H401** NO SCALE



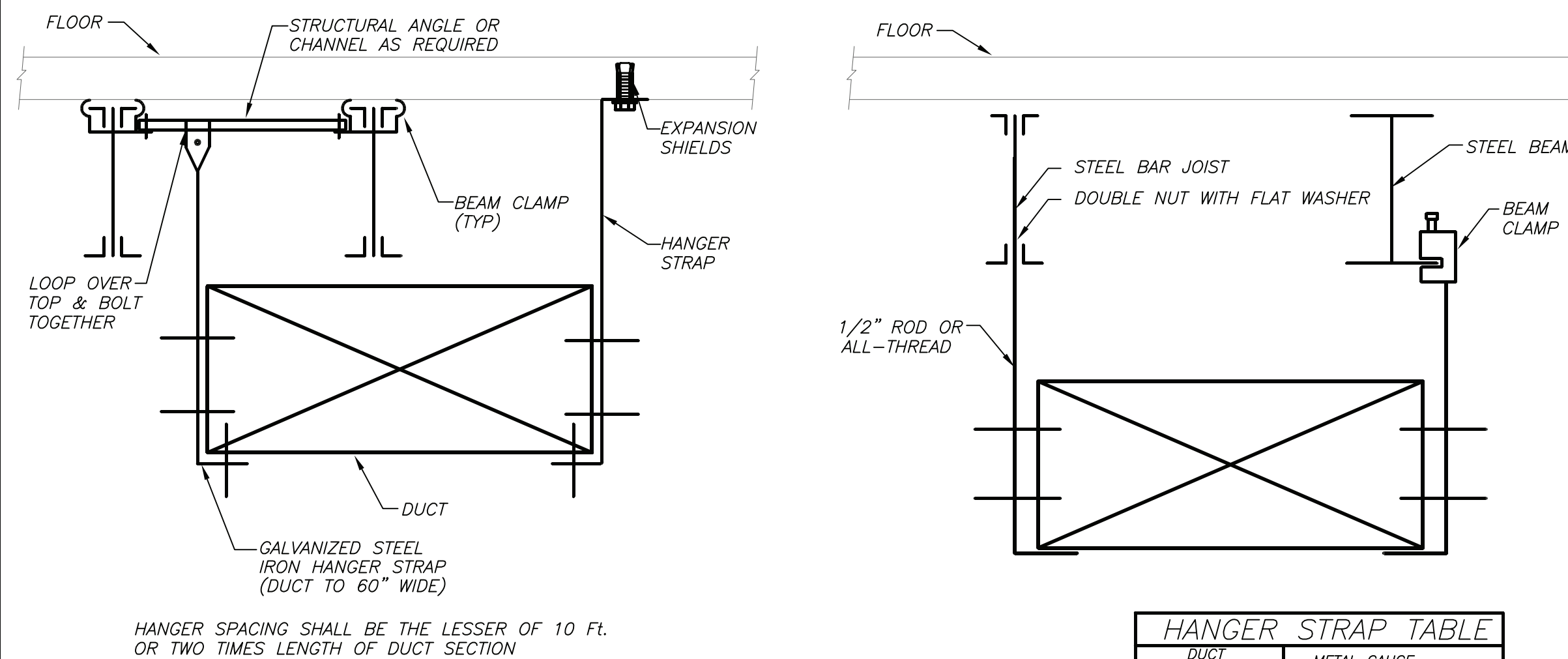
DUCT DIVIDED FLOW BRANCHES DETAIL **4** **H401** NO SCALE



DUCT BRANCH CONNECTIONS DETAIL **1** **H401** NO SCALE

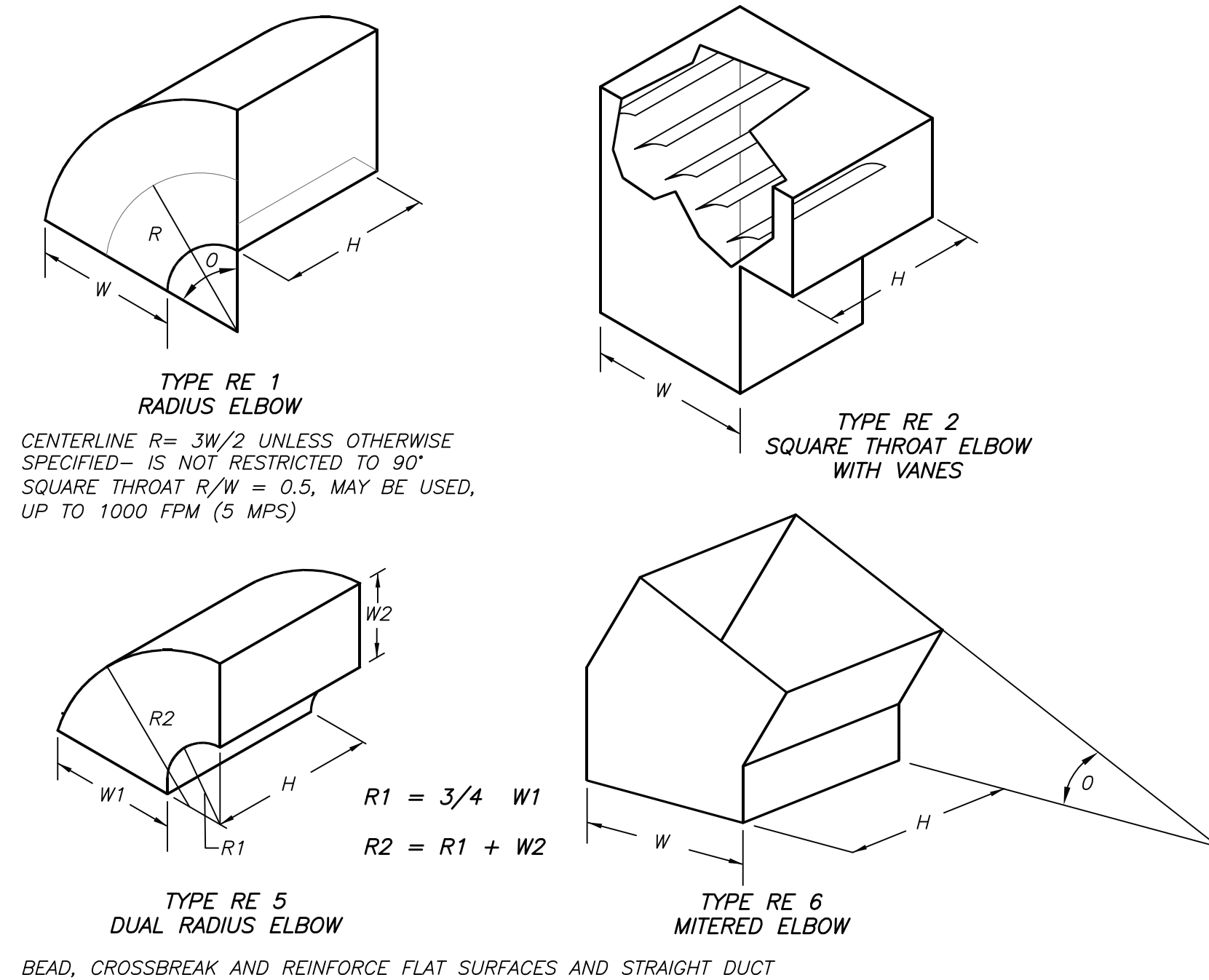


PIPING CONNECTION TO UNIT HEATER DETAIL **8** **H401** NO SCALE

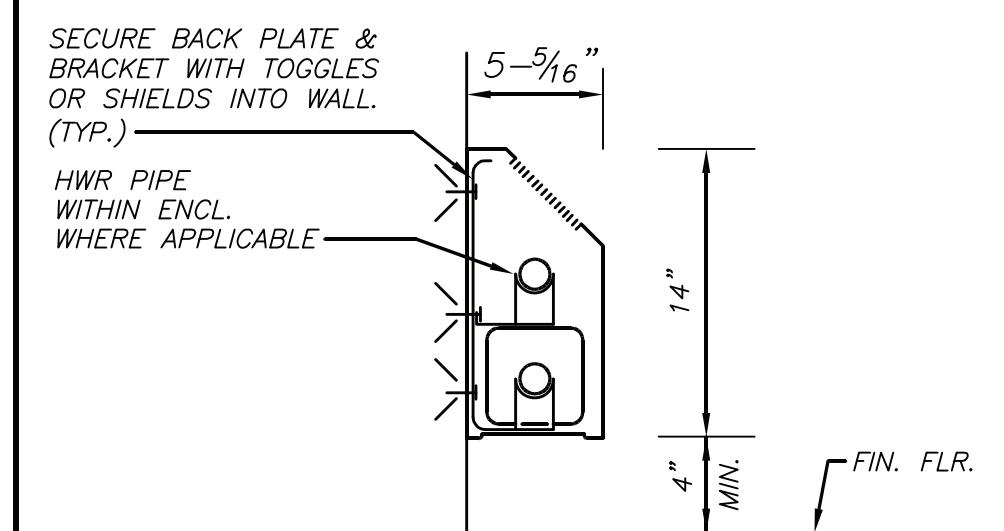


DUCT SIZE	METAL GAUGE
UP TO 2 SQFT.	20 GA. GALV.
UP TO 4 SQFT.	16 GA. GALV.
UP TO 6 SQFT.	12 GA. GALV.
UP TO 8 SQFT.	1/16" GALV.
OVER 8 SQFT.	SEE SMACNA GUIDELINE

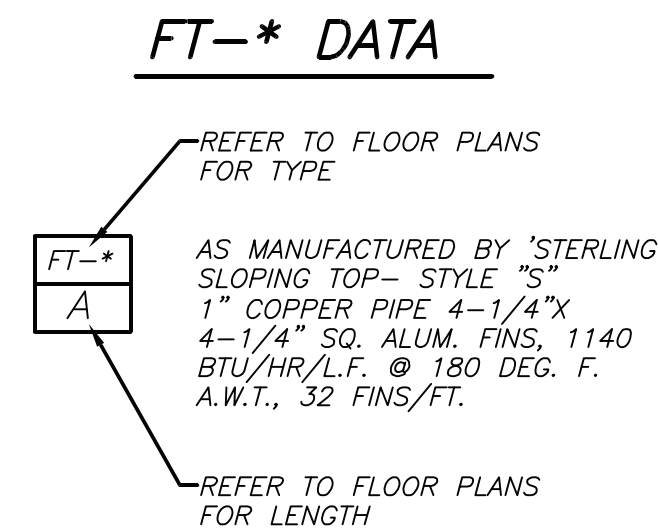
DUCT SUPPORT DETAIL **5** **H401** NO SCALE



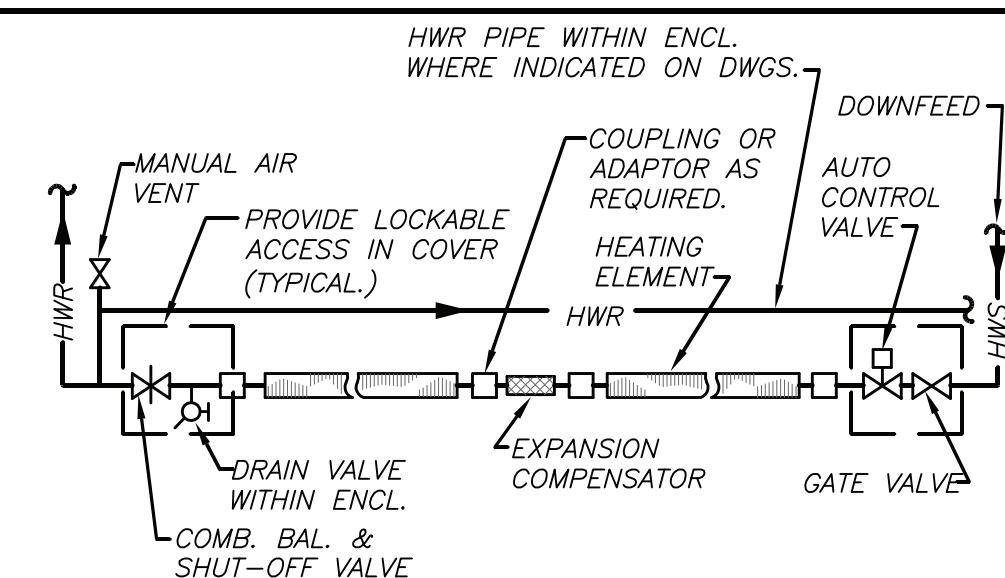
DUCT RECTANGULAR ELBOWS DETAIL **2** **H401** NO SCALE



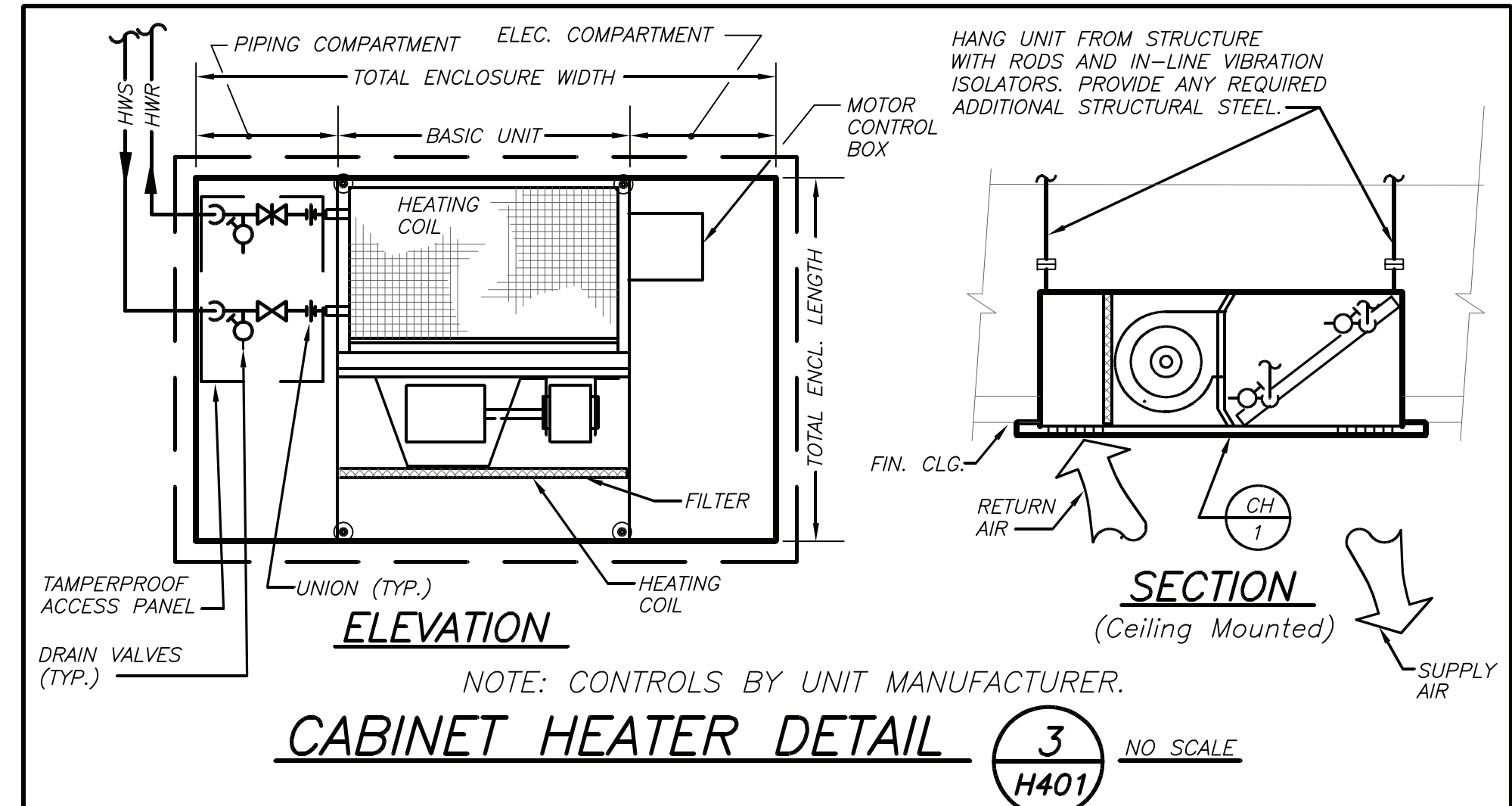
SECTION-TYPE *



IDENTIFICATION-TYPE *



SCHEMATIC ELEVATION



CABINET HEATER DETAIL **3** **H401** NO SCALE

FIN TUBE RADIATION DETAIL (HOT WATER) **6** **H401** NO SCALE

BEFORE FABRICATION THIS CONTRACTOR SHALL VERIFY ALL MEASUREMENTS AND CONDITIONS ON JOB AND COORDINATE HIS WORK WITH THE WORK OF ALL OTHER CONTRACTORS

PROFESSIONAL DEVELOPMENT CENTER

NYACK UFSD

13A DICKINSON AVE
NYACK, NY 10960

KG+D listen imagine build
KG+D . ARCHITECTS PC
285 MAIN STREET MOUNT KISCO . NEW YORK . 10549
P:914.666.5900 KGDARCHITECTS.COM



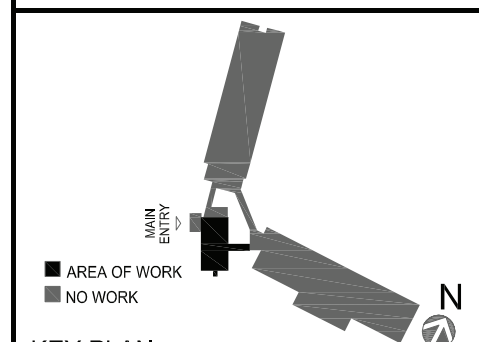
BARILE GALLAGHER & ASSOCIATES

CONSULTING ENGINEERS
39 MARBLE AVE. PLEASANTVILLE, NY 10570
914.328.6600 GENERAL@BGA-ENG.COM WWW.BGA-ENG.COM

NY SED PROJECT CONTROL NO.

66-23-00-01-0-008-011

CONSTRUCTION DOCUMENTS



KEY PLAN

NOTE: ALL IDEAS, DESIGNS, ARRANGEMENTS AND PLANS INDICATED OR REPRESENTED BY THIS DRAWING ARE OWNED BY AND ARE THE PROPERTY OF KGMET, GARNETT & DAVISON ARCHITECTS, P.C. (KGD), AND WERE CREATED FOR USE ON THIS PROJECT. NONE OF SUCH IDEAS, DESIGNS, ARRANGEMENTS OR PLANS SHALL BE USED BY OR DISCLOSED TO ANY PURPOSE WHATSOEVER WITHOUT THE WRITTEN PERMISSION OF (KGD).

WRITTEN DIMENSIONS ON THIS DRAWING SHALL HAVE PRECEDENCE OVER SCALED DIMENSIONS. CONTRACTOR SHALL VERIFY ALL ACTUAL DIMENSIONS AND CONDITIONS ON THE JOB AND THE ARCHITECT MUST BE NOTIFIED OF ANY VARIATIONS FROM DIMENSIONS AND CONDITIONS SHOWN. SHOP DETAILS MUST BE SUBMITTED TO THIS OFFICE FOR APPROVAL BEFORE PROCEEDING WITH FABRICATION.

ALTERATIONS BY ANY PERSON, IN ANY WAY, OF ANY ITEM CONTAINED ON THIS DOCUMENT, UNLESS ACTING UNDER THE DIRECTION OF THE LICENSED ARCHITECT, VIOLATES PROFESSIONAL SEAL IS AFFIXED HERETO, IS A VIOLATION OF TITLE VII, SECT. 66.3 (b) OF NEW YORK STATE LAW. COPYRIGHT KGMET, GARNETT & DAVISON ARCHITECTS & ENGINEERS, P.C. ALL RIGHTS RESERVED.

Professional Seal

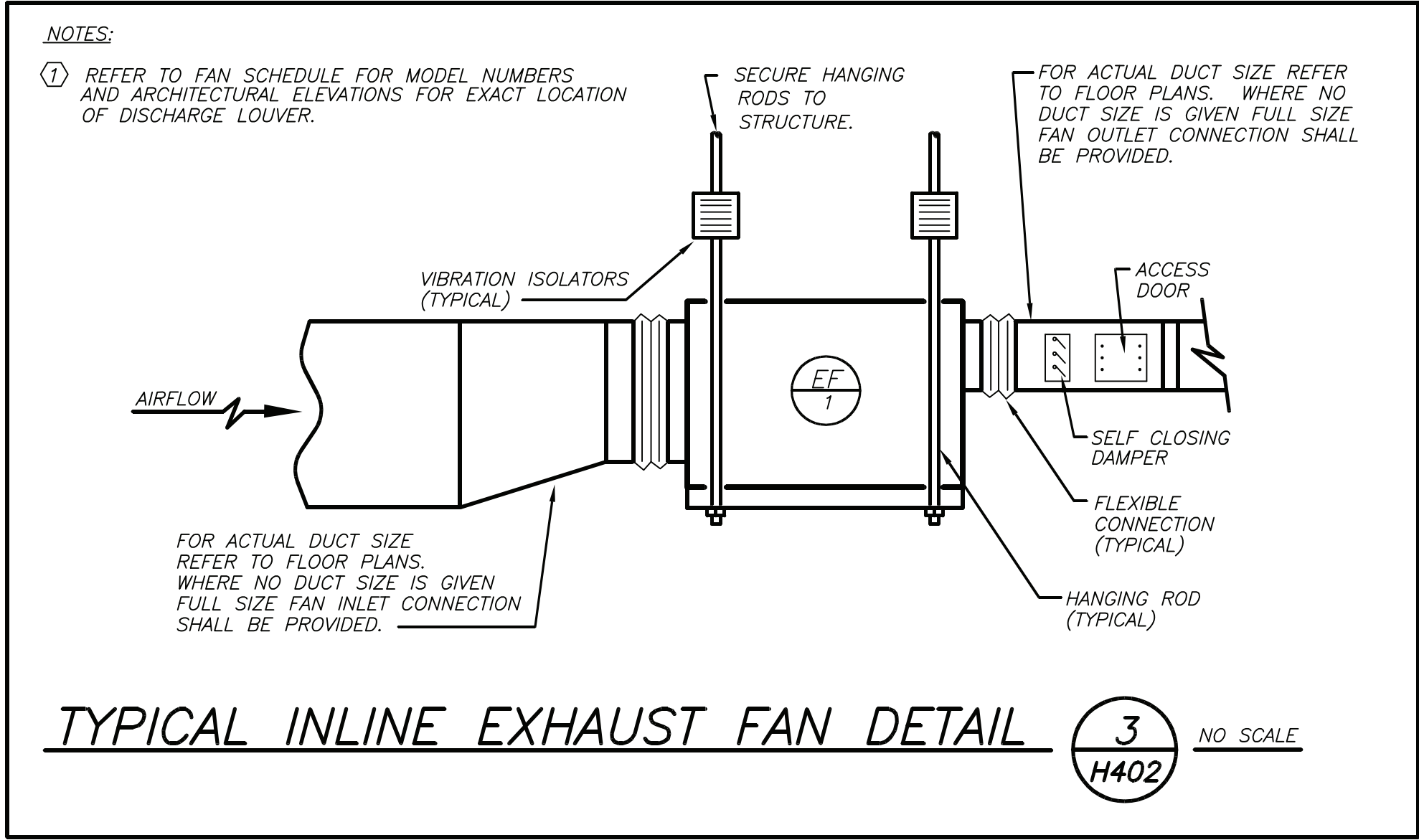
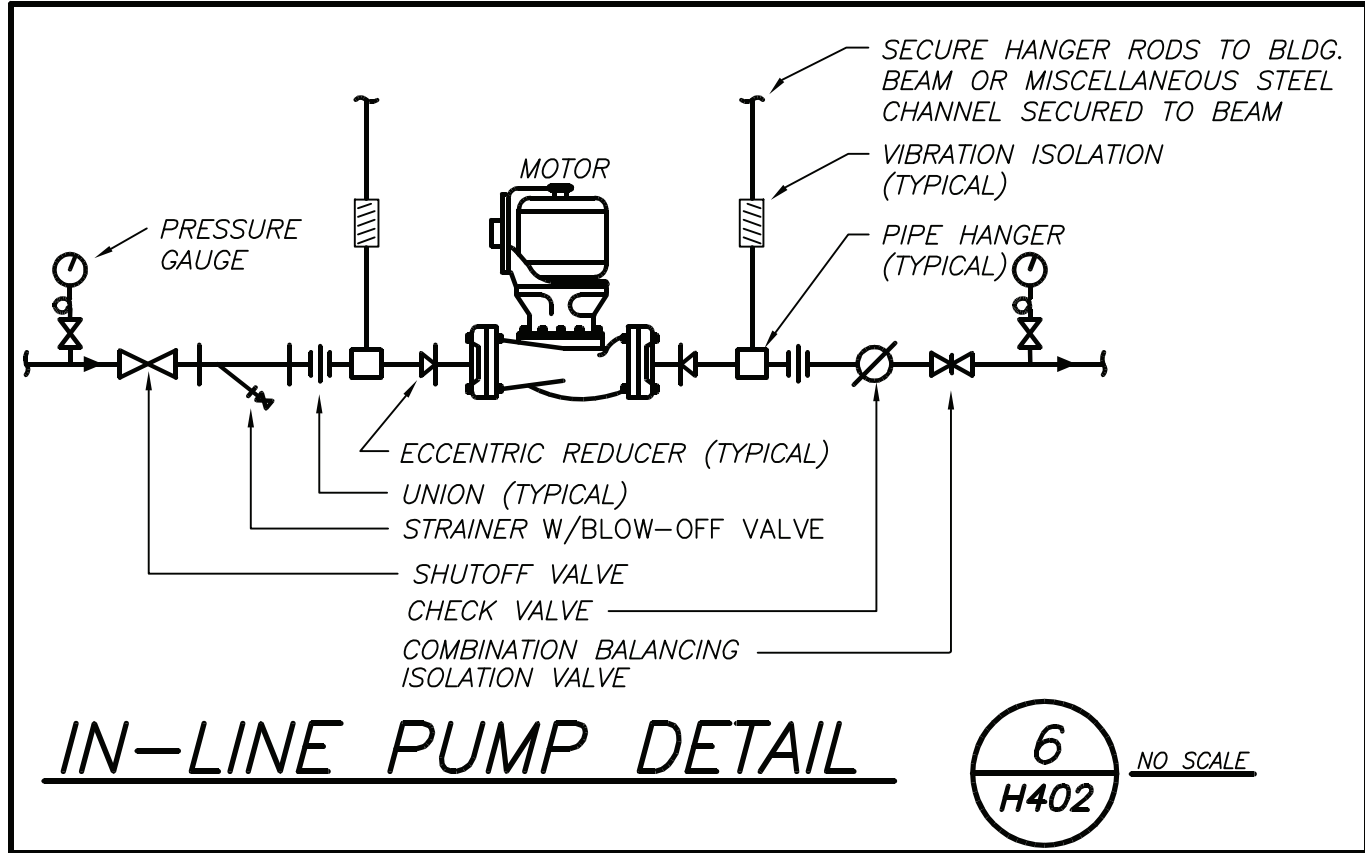
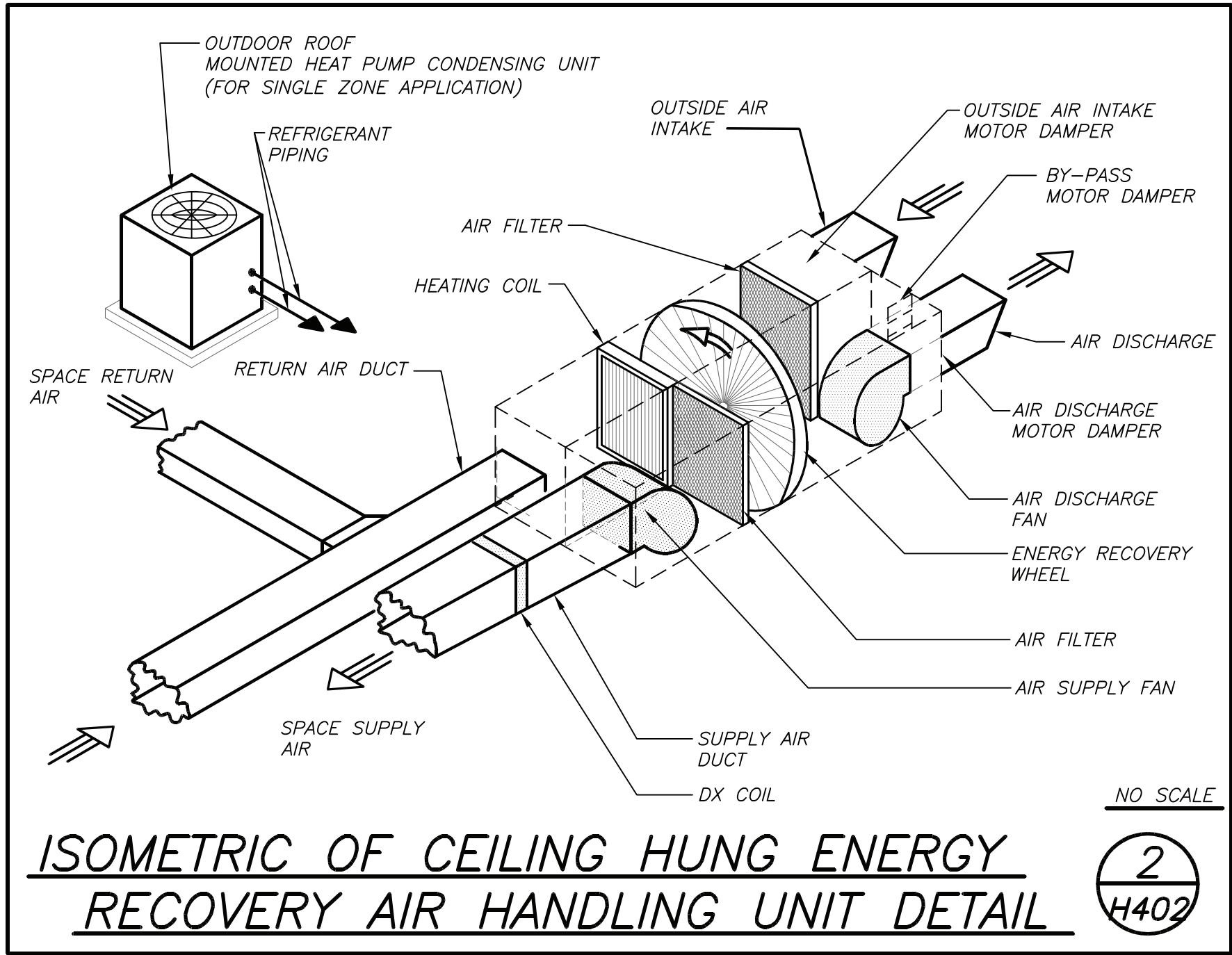
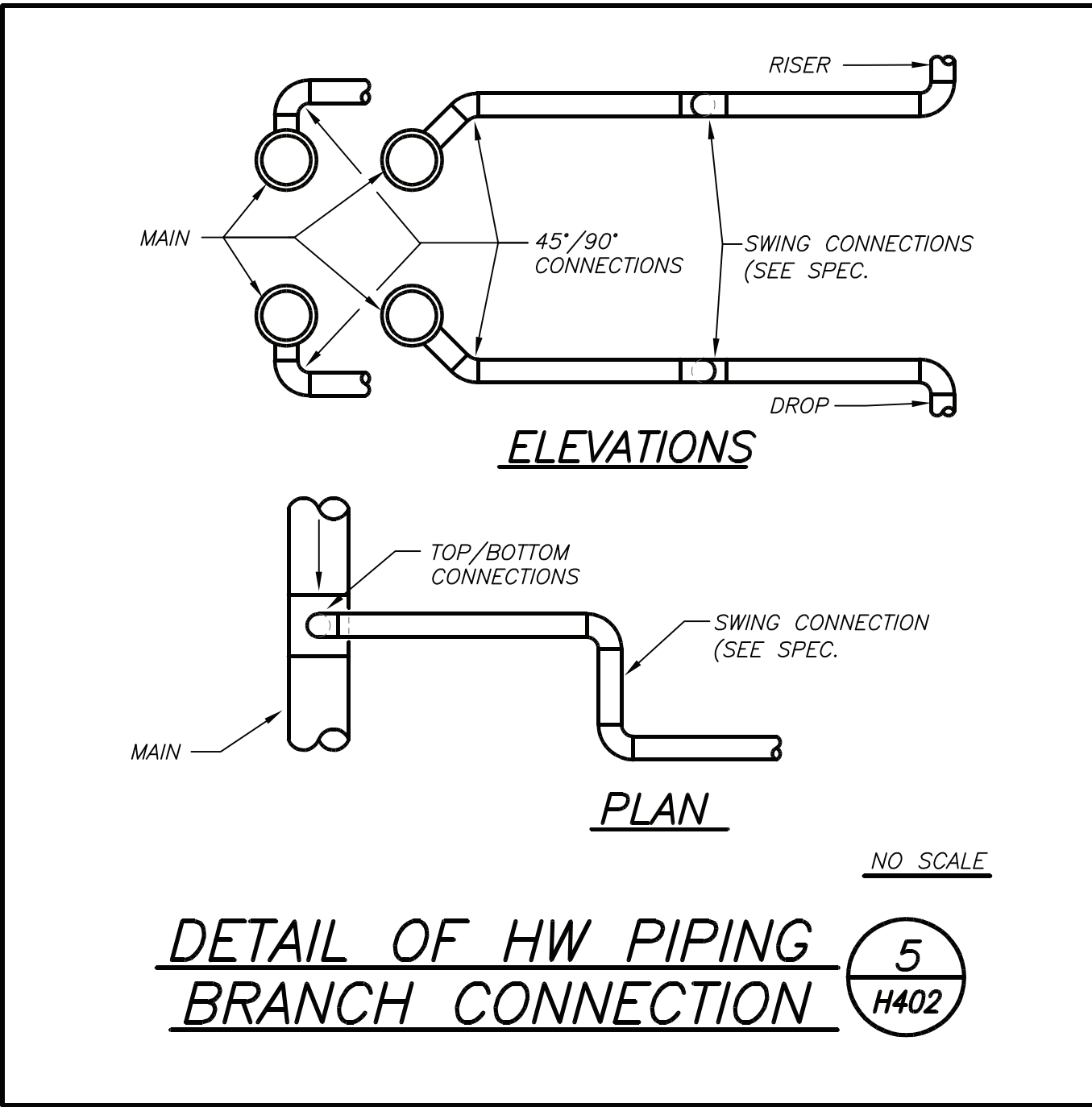
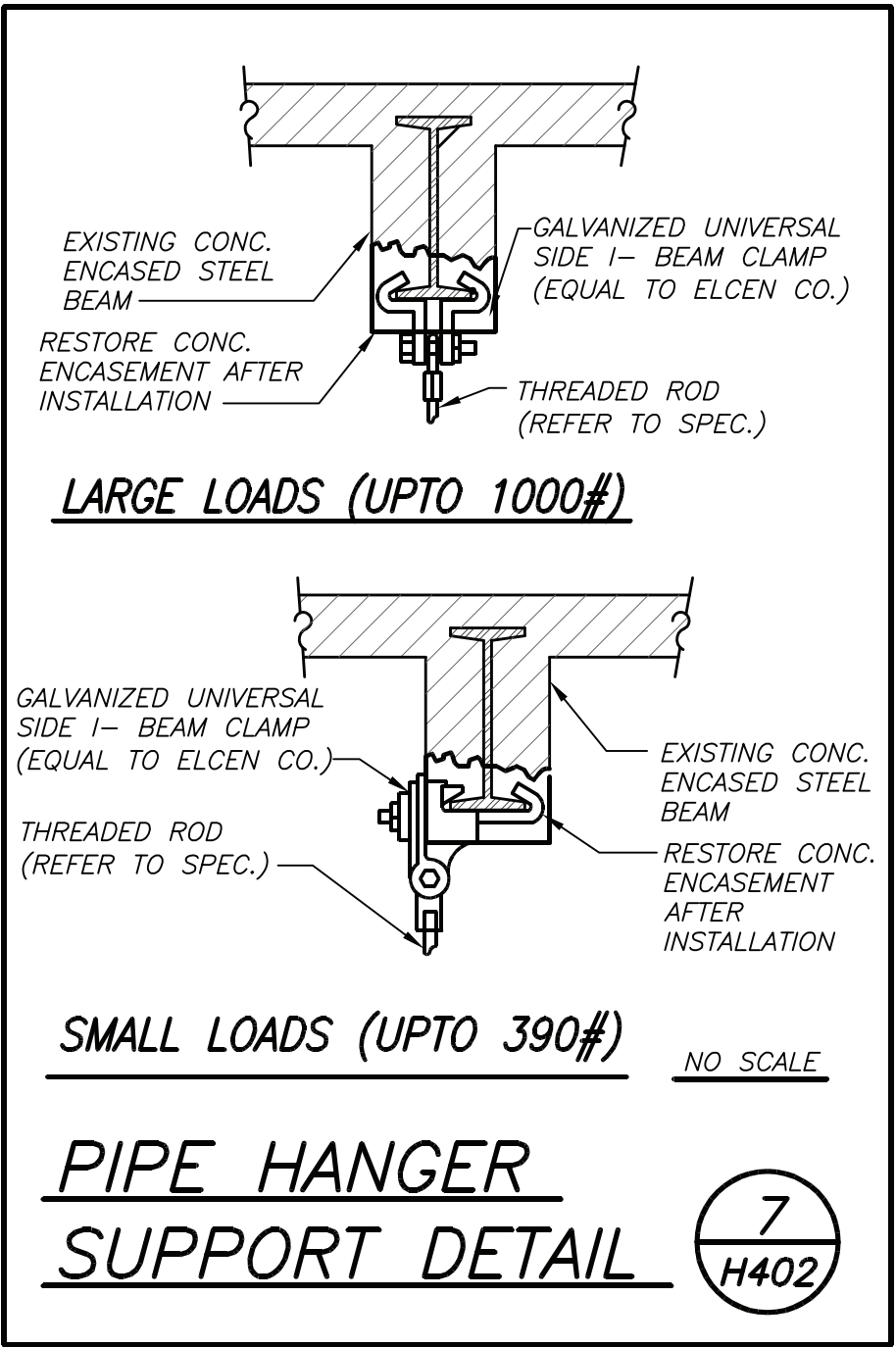
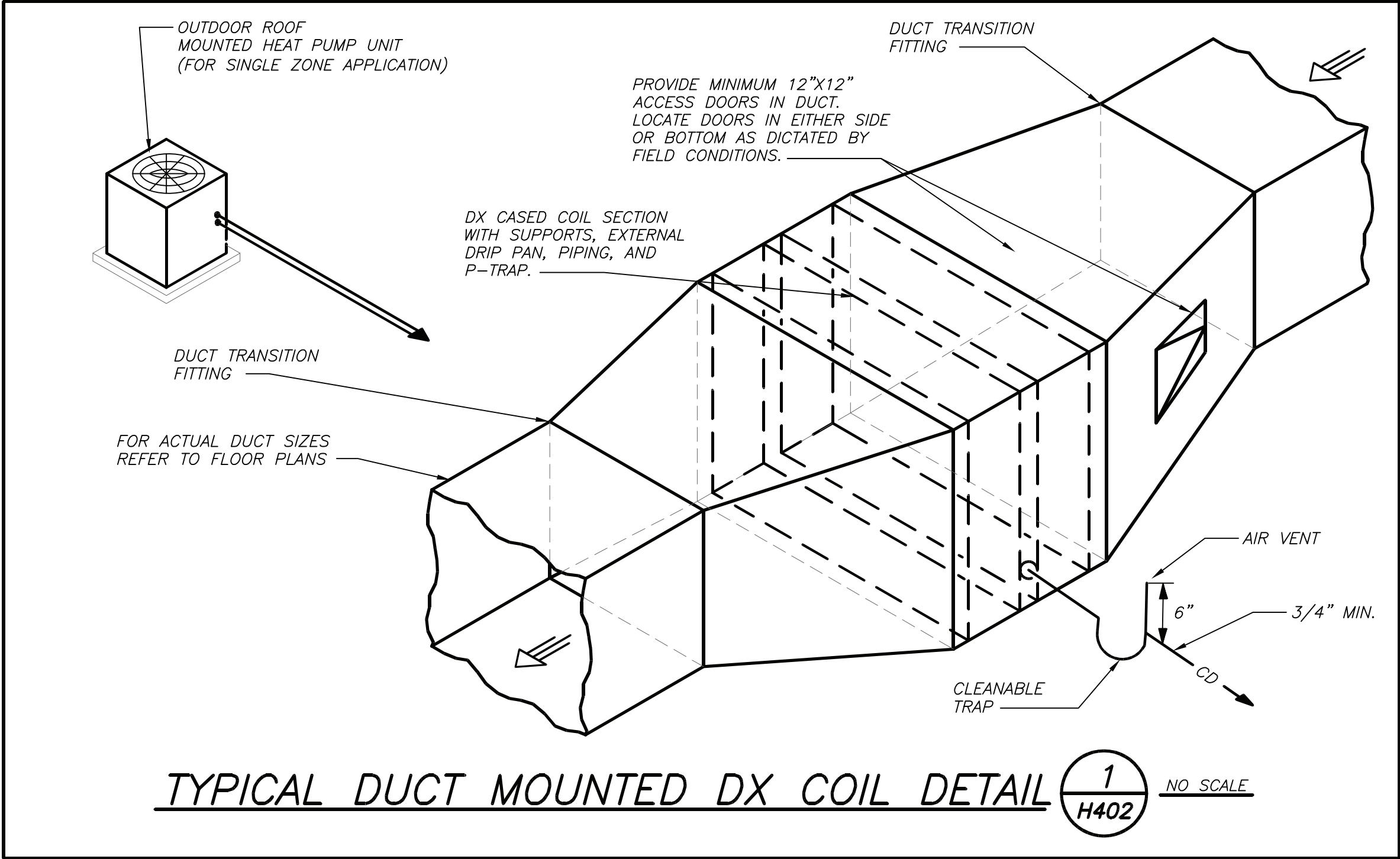
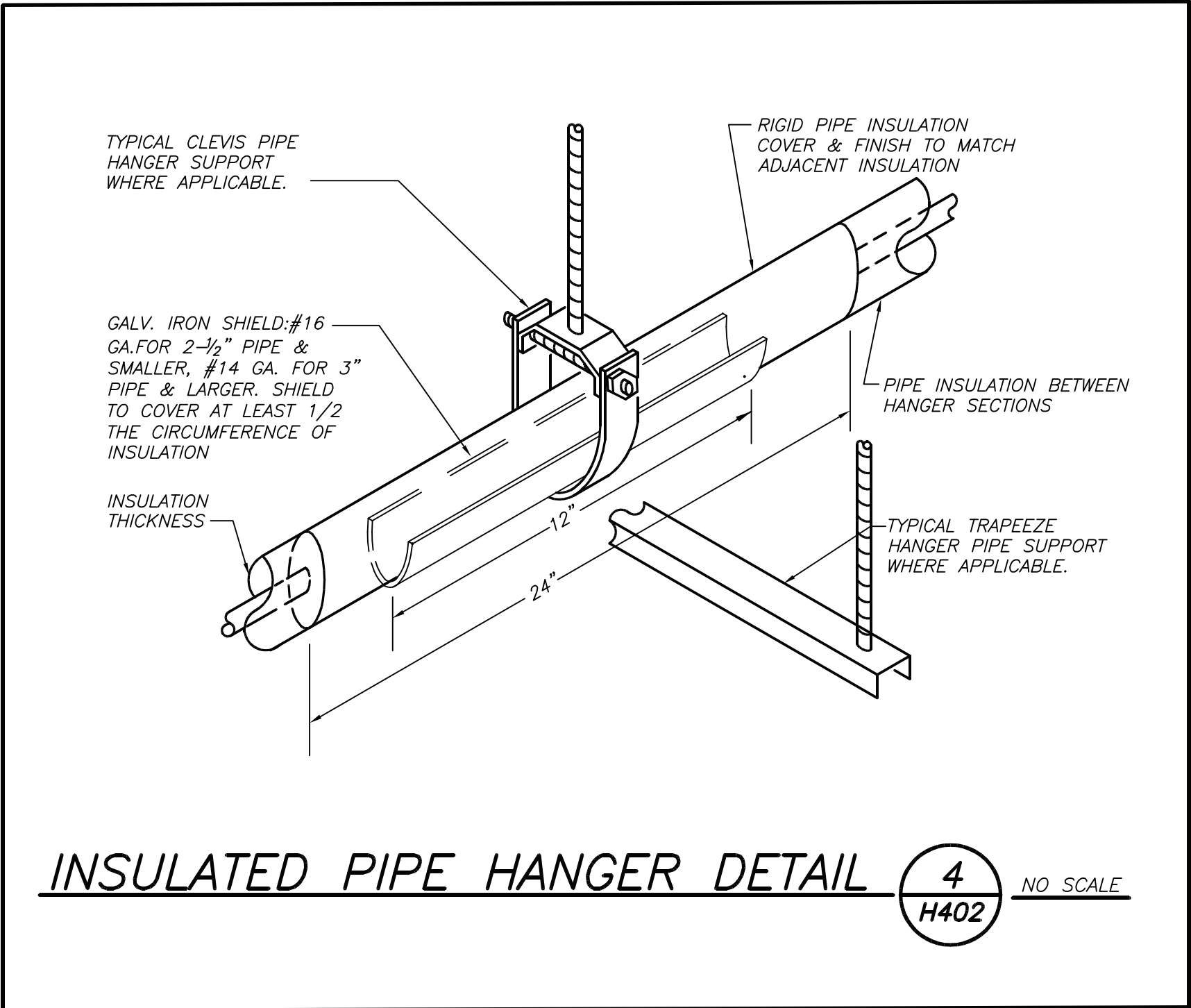
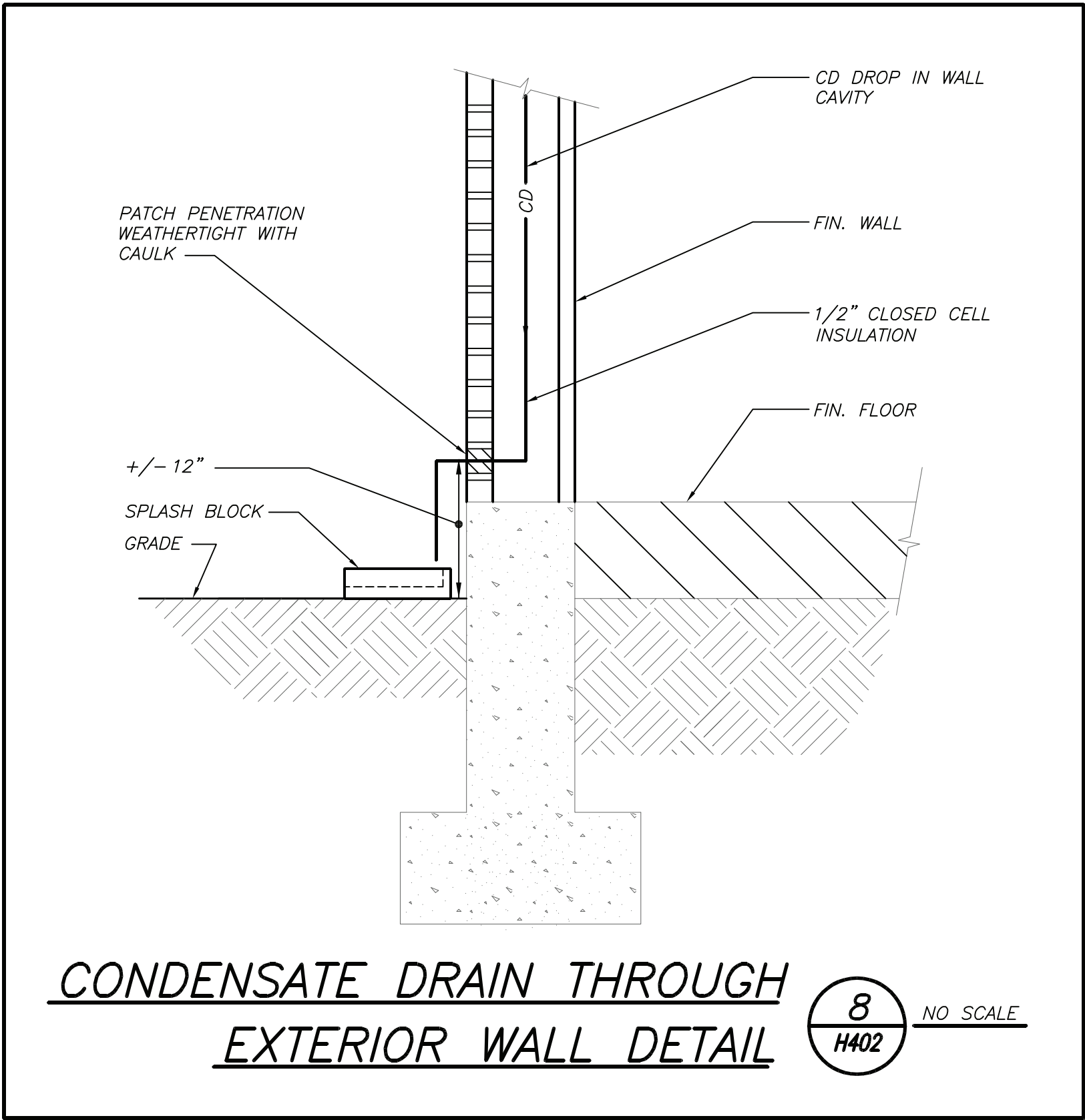
No.	Date	Issue
3	2022-10-12	ISSUE FOR REBID
2	2022-07-12	ISSUE FOR BID
1	2022-03-24	CONSTRUCTION DOCUMENTS

Sheet Title

DETAILS

Job No.	2021-1048	Date	09/10/2021
Scale	AS NOTED	Drawn / Checked	BGA / BGA
Sheet Number			

H401



BEFORE FABRICATION THIS CONTRACTOR SHALL VERIFY ALL MEASUREMENTS AND CONDITIONS ON JOB AND COORDINATE HIS WORK WITH THE WORK OF ALL OTHER CONTRACTORS

PROFESSIONAL DEVELOPMENT CENTER

NYACK UFSD

13A DICKINSON AVE
NYACK, NY 10960

KG+D

listen
imagine
build

KG+D . ARCHITECTS PC
285 MAIN STREET MOUNT KISCO, NEW YORK, 10549
P:914.666.5900 KGDARCHITECTS.COM



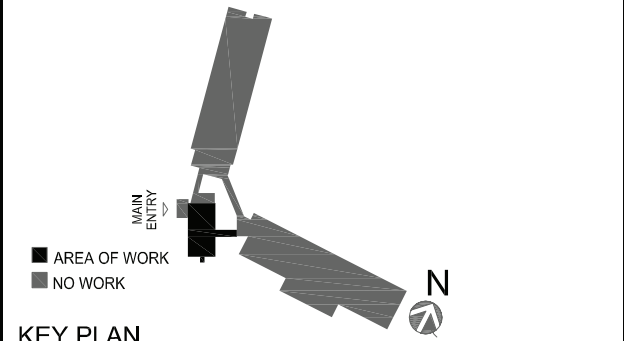
BARILE GALLAGHER & ASSOCIATES

CONSULTING ENGINEERS
39 MARBLE AVE. PLEASANTVILLE, NY 10570
914.328.6600 GENERAL@BGA-ENG.COM WWW.BGA-ENG.COM

NY SED PROJECT CONTROL NO.

66-23-00-01-0-008-011

CONSTRUCTION DOCUMENTS



NOTE: ALL IDEAS, DESIGNS, ARRANGEMENTS AND PLANS INDICATED OR REPRESENTED BY THIS DRAWING ARE OWNED BY AND ARE THE PROPERTY OF KAPFER, GARRETT & DAVISON ARCHITECTS, PC (KGAD), AND WERE CREATED FOR USE ON THIS PROJECT. NONE OF SUCH IDEAS, DESIGNS, ARRANGEMENTS OR PLANS SHALL BE USED BY OR DISCLOSED TO ANY PURPOSE WHATSOEVER WITHOUT THE WRITTEN PERMISSION OF (KGAD).

WRITTEN DIMENSIONS ON THIS DRAWING SHALL HAVE PRECEDENCE OVER SCALED DIMENSIONS. CONTRACTOR SHALL VERIFY ALL ACTUAL DIMENSIONS AND CONDITIONS ON THE JOB AND THE ARCHITECT MUST BE NOTIFIED OF ANY VARIATIONS FROM DIMENSIONS AND CONDITIONS SHOWN. SHOP DETAILS MUST BE SUBMITTED TO THIS OFFICE FOR APPROVAL BEFORE PROCEEDING WITH FABRICATION.

ALTERATIONS BY ANY PERSON, IN ANY WAY, OF ANY ITEM CONTAINED ON THIS DOCUMENT, UNLESS ACTING UNDER THE DIRECTION OF THE LICENSED ARCHITECT WHOSE PROFESSIONAL SEAL IS AFFIXED HERETO, IS A VIOLATION OF TITLE VII, SECT. 60.3 (b) OF NEW YORK STATE LAW. COPYRIGHT KAPFER, GARRETT & DAVISON ARCHITECTS & ENGINEERS, PC. ALL RIGHTS RESERVED.

Professional Seal

No.	Date	Issue
3	2022-10-12	ISSUE FOR REBID
2	2022-07-12	ISSUE FOR BID
1	2022-03-24	CONSTRUCTION DOCUMENTS

Sheet Title

DETAILS

Job No.	Date
2021-1048	09/10/2021
Scale	Drawn / Checked
AS NOTED	BGA / BGA
Sheet Number	

H402