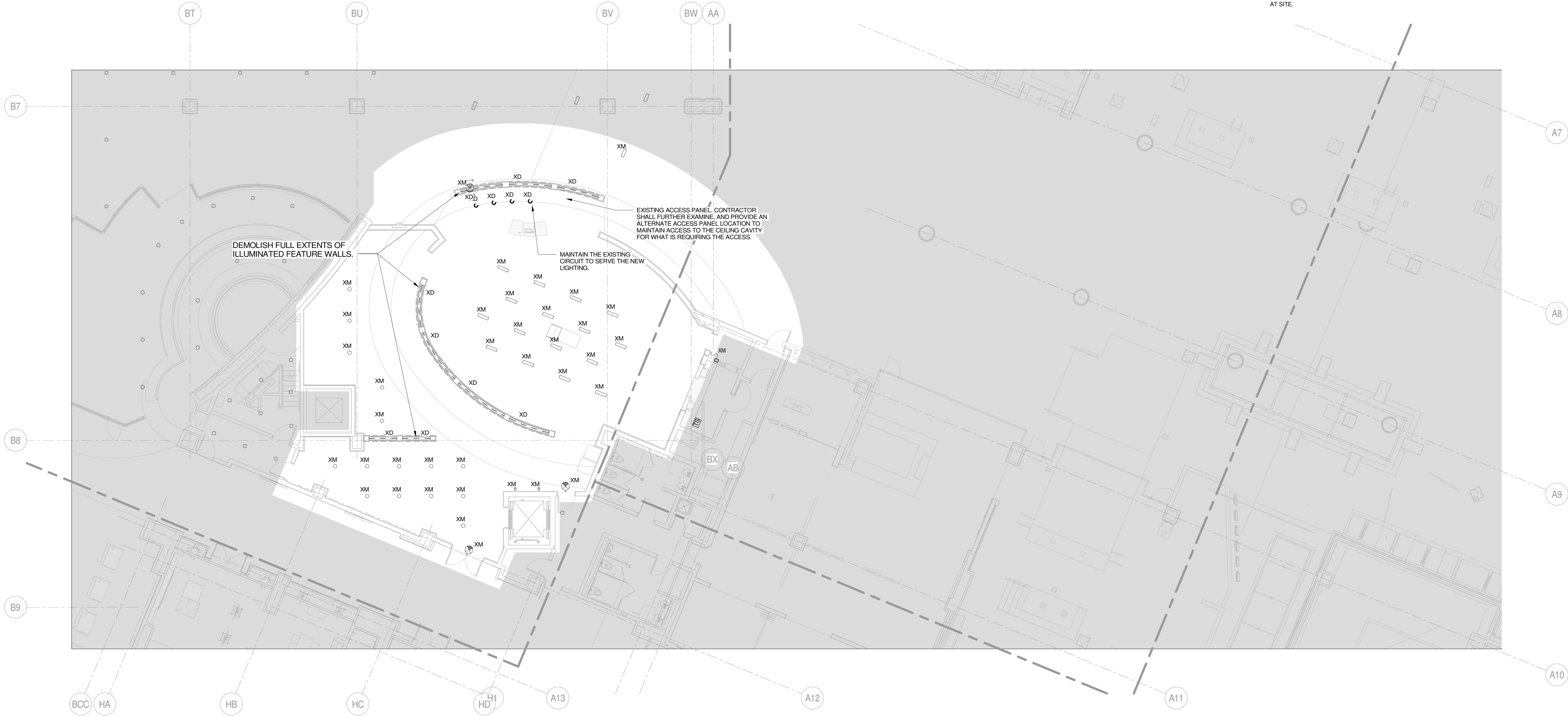


ISSUE	07/06/2022
JOB	30860.00
DRAWN	JDB
SCALE	1/8" = 1'-0"
REVISIONS	

GENERAL DEMOLITION NOTES

- THIS EXISTING FLOOR PLAN HAS BEEN DEVELOPED UTILIZING EXISTING DOCUMENTS AND READILY OBSERVABLE SITE CONDITIONS. ALL DEVICES, RECEPTACLES, LIGHTS, CONDUITS, JUNCTION BOXES, ELECTRICAL EQUIPMENT, EQUIPMENT SIZES, ETC. SHOWN ARE FOR REFERENCE ONLY AND MAY NOT INDICATE CORRECT IDENTIFICATION, AND SIZE, AND TOTAL QUANTITIES OF ITEMS SCHEDULED FOR DEMOLITION. VISIT SITE AND FIELD VERIFY THE NUMBER OF DEVICES WITHIN THE CONSTRUCTION PHASE AREA PRIOR TO THE BID AND REMOVAL. THE DRAWINGS DO NOT LIMIT THE AMOUNT OF DEMOLITION WORK REQUIRED. THE ELECTRICAL CONTRACTOR MUST PERFORM THE DEMOLITION WORK AS INDICATED ON THE DEMOLITION DRAWINGS AND AS REQUIRED FOR THE NEW WORK.
- DEMOLITION WORK MUST FOLLOW THE CONSTRUCTION PHASING SEQUENCE AND MUST BE COORDINATED WITH THE GENERAL AND MECHANICAL DRAWINGS AND CONTRACTORS.
- REMOVE ALL DEVICES, EQUIPMENT, MATERIAL, AND CIRCUITS IN THEIR ENTIRETY, WHICH INTERFERE WITH THE NEW CONSTRUCTION AS DIRECTED BY THE CONSTRUCTION MANAGER. NO ELECTRICAL OR ELECTRONIC CIRCUIT TRACERS WERE USED TO VERIFY CONFIGURATION OF SYSTEM. ALWAYS FIELD VERIFY SYSTEM PRIOR TO STARTING WORK AT SITE. THE TERM ASSOCIATED CIRCUITRY SHALL MEAN CONDUIT, FITTINGS, SUPPORTS, JUNCTION BOXES, CONDUCTORS, ETC. BACK TO THE RESPECTIVE PANELBOARD (POWER SOURCE), OR TO THE LAST JUNCTION BOX OR DEVICE IF THE REMAINING PORTION OF THE CIRCUIT SERVES EXISTING EQUIPMENT OR AREAS WHICH SHALL REMAIN.
- MAINTAIN AND RESTORE, IF INTERRUPTED BY REMOVALS OR IN PATH OF NEW CONSTRUCTION, ALL CIRCUITS, CONDUITS AND FEEDERS PASSING THROUGH AND SERVING UNDISTURBED AREAS (SHOWN OR NOT SHOWN). VERIFY CIRCUITS, DEVICES, AND EQUIPMENT SCHEDULED FOR REMOVAL TO ASSURE THAT THEIR REMOVAL WILL NOT ADVERSELY AFFECT ADJACENT AREAS NOT BEING RENOVATED.
- ELECTRICAL SUBCONTRACTOR SHALL MAINTAIN POWER TO ALL CIRCUITS ADJACENT TO THE CONSTRUCTION AREA. THIS SHALL INCLUDE ANY CIRCUITS PASSING THROUGH THE CONSTRUCTION AREA OR CIRCUITS BEING POWERED FROM POWER PANELS OR BUS DUCTS WITHIN THE CONSTRUCTION AREA. EXTEND AND RELOCATE THESE CIRCUITS AS REQUIRED TO MAINTAIN SERVICE AND TO AVOID INTERFERENCE WITH THE NEW WORK. SUBCONTRACTOR SHALL NOTIFY REPRESENTATIVE FROM CONSTRUCTION MANAGER SHOULD IT BE NECESSARY TO INTERRUPT POWER TO AREAS ADJACENT TO THIS CONSTRUCTION AREA.
- ELECTRICAL SUBCONTRACTOR SHALL VERIFY ALL LIGHTING CIRCUITS WITHIN THE CONSTRUCTION AREA BEFORE DISCONNECTING POWER. CONTRACTOR SHALL PROVIDE NECESSARY WIRING TO MAINTAIN LIGHTING IN AREAS ADJACENT TO THIS CONSTRUCTION AREA WHICH WOULD BE AFFECTED BY THIS DEMOLITION WORK.
- IN ANY AREA REQUIRING THE PERFORMANCE OF ANY TRADE'S WORK, THIS CONTRACTOR SHALL CAREFULLY REMOVE AND STORE ANY OR ALL ELECTRICAL ITEMS IN PATH OF WORK, REINSTALLING AND RECONNECTING SAME AS REQUIRED, AFTER COMPLETION OF OTHER TRADE'S WORK IN THAT AREA, IN ACCORDANCE WITH THE PLANS AND/OR AS DIRECTED.
- ALL EXISTING CONDUITS STUBBED THROUGH FLOOR SERVING ITEMS TO BE REMOVED AND NOT SHOWN OR NOT REQUIRED TO BE REUSED, SHALL BE CUT OFF FLUSH WITH SLAB LEVEL WITH CONCRETE. EXISTING FLUSH OUTLET BOXES MAY BE REUSED IF AT PROPER HEIGHT, LOCATION AND IN GOOD CONDITION. EXISTING CONCEALED RACEWAYS MAY BE REUSED IF IN GOOD CONDITION. RACEWAYS FOR CIRCUITRY SHOWN ON PLANS SHALL GOVERN.
- IN ALL EXISTING OR NEW AREAS SPECIFIED OR SHOWN TO BE PAINTED, THIS CONTRACTOR SHALL REMOVE ALL ELECTRICAL ITEMS AS REQUIRED INCLUDING BUT NOT LIMITED TO LIGHTING FIXTURES, DEVICE PLATES, DEVICES, ETC. REINSTALLING SAME AFTER COMPLETION OF PAINTING. ANY ITEM NOT REMOVED AND PAINTED OVER SHALL BE SUITABLY CLEANED OR REPLACED WITH NEW ITEM BY THIS CONTRACTOR.
- INVENTORY MAJOR ELECTRICAL ITEMS THAT ARE REMOVED AND PROVIDE A LIST TO THE OWNER FOR THEIR SELECTION OF ITEMS TO BE RETAINED. ALL ITEMS REJECTED BY THE OWNER SHALL BECOME THE PROPERTY OF THE CONTRACTOR AND SHALL BE REMOVED FROM THE SITE.
- EXISTING FIRE ALARM DEVICES SHALL BE PROTECTED FROM DAMAGE DURING CONSTRUCTION. THE FIRE ALARM SYSTEM SHALL BE MAINTAINED AND OPERATIONAL DURING CONSTRUCTION. DISCONNECT, MAKE SAFE AND REMOVE ALL TEMPORARY AND ABANDONED WIRE WITHIN THE SPACE.
- BRANCH CIRCUIT WIRING TO DEVICES IN AREAS OF DEMOLITION SHALL BE DISCONNECTED, MADE SAFE AND REMOVED COMPLETELY BACK TO THE PANELBOARD. THE CONTRACTOR SHALL NOT ABANDON BRANCH CIRCUIT WIRING IN EXISTING WALLS AND CEILINGS. MAINTAIN THE CONTINUITY OF BRANCH CIRCUIT WIRING TO ANY AREAS WHICH ARE TO REMAIN BUT ARE AFFECTED BY THE DEMOLITION OR NEW CONSTRUCTION.
- THE EXISTING ONE LINE HAS BEEN DEVELOPED UTILIZING EXISTING DOCUMENTS AND READILY OBSERVABLE SITE CONDITIONS. NO ELECTRICAL OR ELECTRONIC CIRCUIT TRACERS WERE USED TO VERIFY CONFIGURATION. ALWAYS FIELD VERIFY SYSTEM PRIOR TO STARTING WORK AT SITE.



FIRST FLOOR DEMOLITION  
LIGHTING  
PLAN  
1/8" = 1'-0"