

**888 resorts World Dr  
Monticello, NY 12701**

**888 resorts World Dr  
Monticello, NY 12701**

120 HUYSHOPE AVENUE  
SUITE 400  
HARTFORD, CT 06106  
860.247.9226

© 2021 JCJ Architecture

**CONSULTANT:**

**VANDERWEIL**

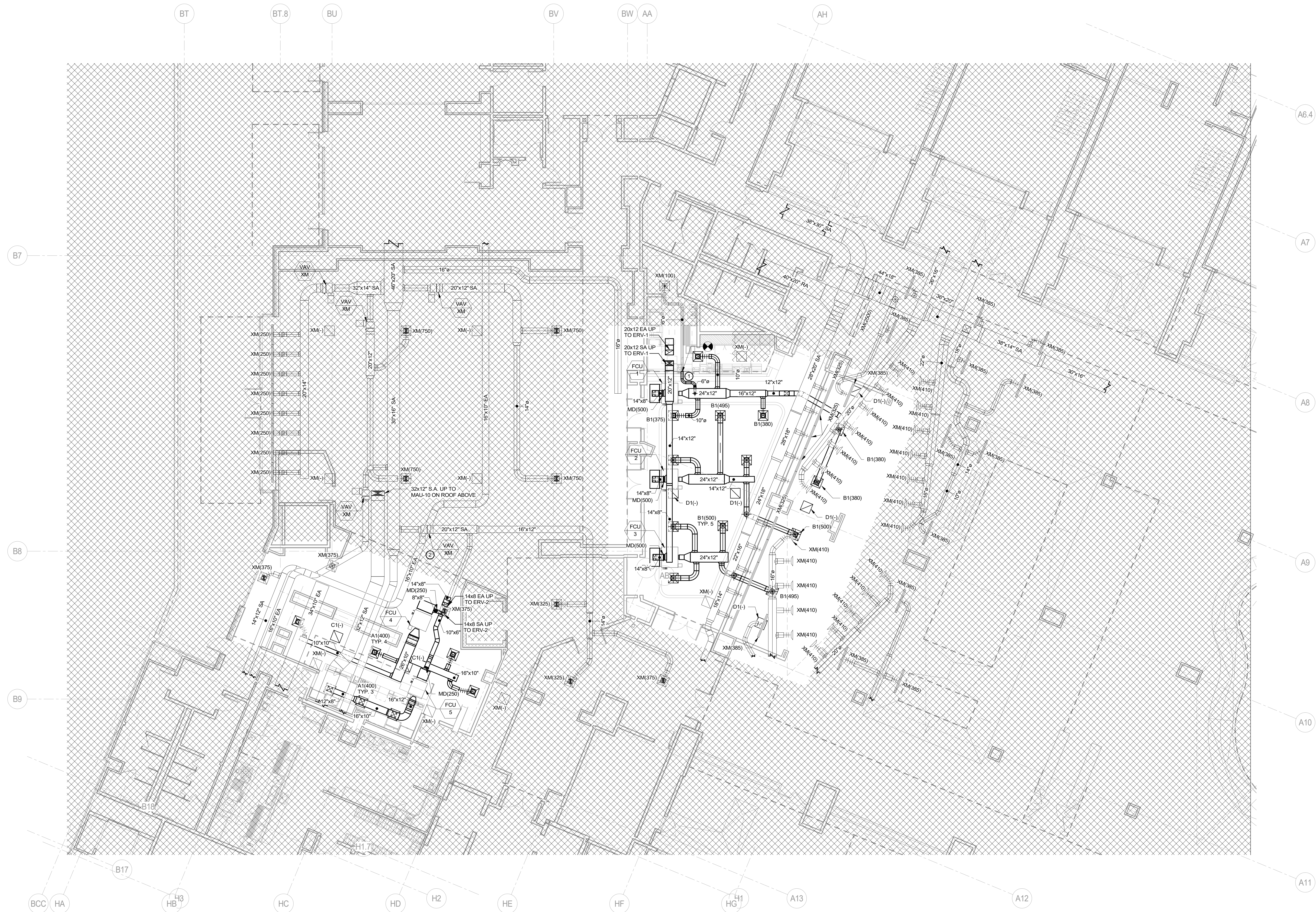
R.G. Vanderweil Engineers, LLP : 617.423.7423 TEL  
274 Summer Street : 617.423.7401 FAX  
Boston, MA 02210 : [vanderweil.com](http://vanderweil.com)

BIDDING &  
CONSTRUCTION  
07/06/2022

|           |              |
|-----------|--------------|
| ISSUE     | 07/06/2022   |
| JOB       | 30860.00     |
| DRAWN     | Author       |
| SCALE     | 1/8" = 1'-0" |
| REVISIONS |              |

### DUCTWORK THIRD FLOOR

M-6



① HVAC DUCTWORK - THIRD FLOOR  
1/8" = 1'-0"

GENERAL NOTES:

1. COORDINATE INSTALLATION OF DUCTWORK WITH OTHER TRADES BEFORE FABRICATION PROVIDE OFFSETS AS REQUIRED TO AVOID INTERFERENCES.
2. FINAL LOCATION OF DIFFUSERS, REGISTERS AND GRILLES SHALL BE FROM ARCHITECTURAL REFLECTED CEILING PLANS.
3. REFER TO ARCHITECTURAL DRAWINGS FOR ALL WALL DEVICE MOUNTING HEIGHTS AND LOCATIONS.
4. BRANCH DUCT SIZES TO DIFFUSERS/GRILLE SHALL MATCH NECK SIZE OF AIR DEVICE UNLESS OTHERWISE NOTED.
5. ALL THERMOSTATS LOCATED ON PERIMETER WALLS & COLUMNS SHALL BE PROVIDED WITH INSULATED BACKPLATES.
6. CONTRACTOR SHALL SEAL ALL EXISTING TO REMAIN DUCTWORK JOINTS WITHIN SCOPE OF WORK IN ACCORDANCE WITH BASE BUILDING SPECIFICATIONS.
7. CONTRACTOR SHALL REPAIR ANY MISSING OR DAMAGED DUCTWORK INSULATION ON ALL EXISTING TO REMAIN DUCTWORK WITHIN SCOPE OF WORK IN ACCORDANCE WITH PROJECT SPECIFICATIONS AND/OR BASE BUILDING SPECIFICATIONS.
8. CONTRACTOR SHALL MAINTAIN BUILDING MANAGEMENT AIR QUALITY STANDARD DURING CONSTRUCTION.
9. COORDINATE ANY/ALL BASE BUILDING EQUIPMENT OR SYSTEM SHUTDOWN REQUIREMENTS WITH OWNER.
10. CONTRACTOR MAY SIZE LOW PRESSURE DUCTWORK TO ACCOMMODATE FIELD CONDITIONS BASED UPON THE "LOW PRESSURE DUCT SIZING TABLE" LOCATED WITHIN DIV 23 SPECIFICATIONS.
11. REFER TO HVAC SPECIFICATIONS FOR EXTENT AND LOCATION OF ACOUSTICALLY LINED DUCTWORK.
12. PROVIDE MANUAL ADJUSTABLE DAMPERS ON EACH LOW PRESSURE SUPPLY RETURN AND EXHAUST DUCT TAKE OFF, AND AT EACH TAKE OFF TO REGISTERS, GRILLES AND DIFFUSERS, PROVIDE REMOTE ADJUSTABLE VOLUME DAMPERS AT INACCESSIBLE LOCATIONS. WHERE MANUAL DAMPERS ARE SHOWN ON PLAN, PROVIDE AT EXACT LOCATION. OTHERWISE VD SHALL BE AS FAR UPSTREAM AS POSSIBLE.
13. ALL NEW LISTED DUCT SIZES ARE CLEAR INSIDE DIMENSIONS.

**KEY NOTES:**

1. RECONNECT TO EXISTING TO REMAIN BRANCH DUCT. BALANCE TO AIRFLOW INDICATED ON PLANS.
2. REBALANCE TO AIRFLOW INDICATED ON PLANS.