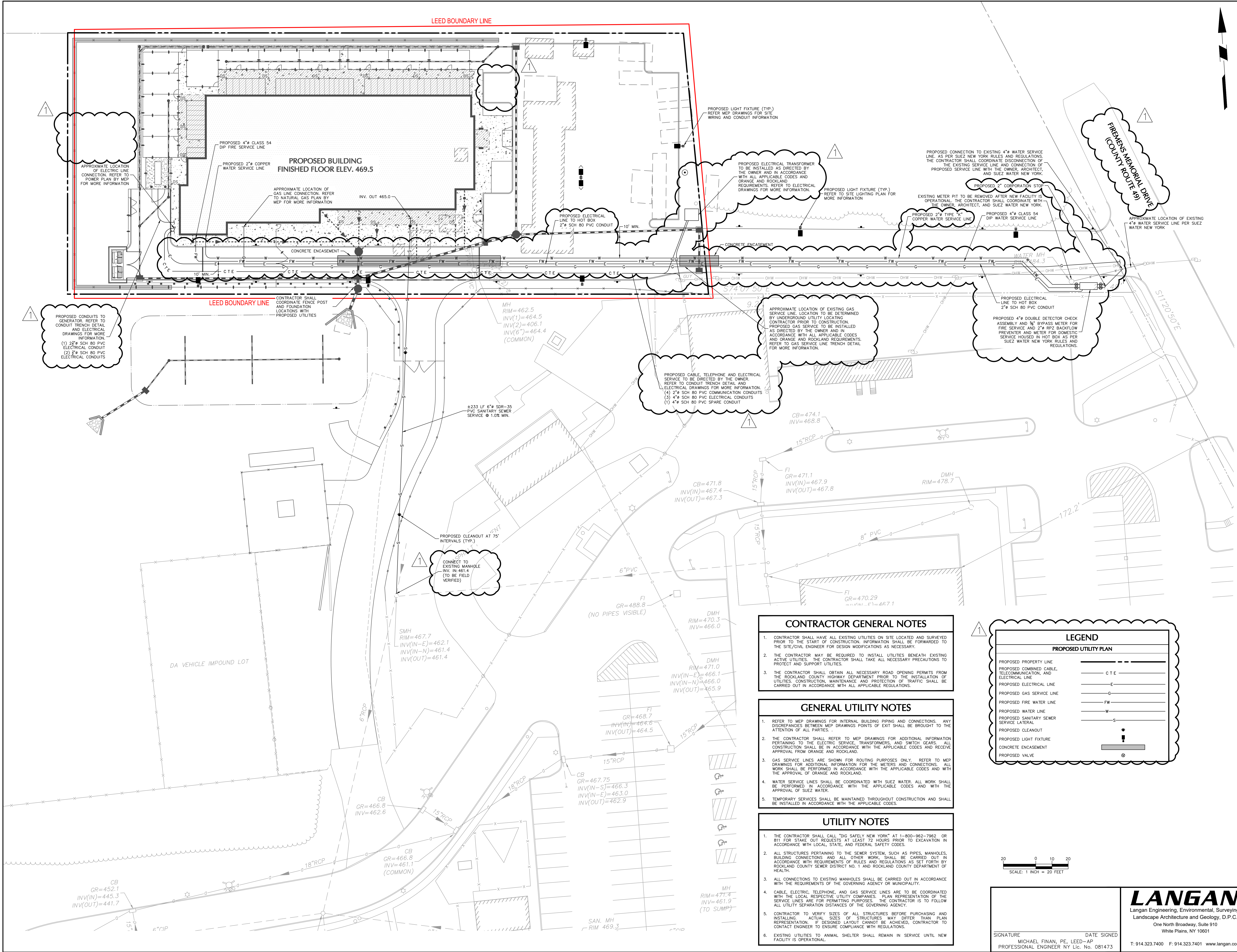


CS101



CONTRACTOR GENERAL NOTES

- CONTRACTOR SHALL HAVE ALL EXISTING UTILITIES ON SITE LOCATED AND SURVEYED PRIOR TO THE START OF CONSTRUCTION. INFORMATION SHALL BE FORWARDED TO THE SITE/CIVIL ENGINEER FOR DESIGN MODIFICATIONS AS NECESSARY.
- THE CONTRACTOR MAY BE REQUIRED TO INSTALL UTILITIES BENEATH EXISTING ACTIVE UTILITIES. THE CONTRACTOR SHALL TAKE ALL NECESSARY PRECAUTIONS TO PROTECT AND SUPPORT UTILITIES.
- THE CONTRACTOR SHALL OBTAIN ALL NECESSARY ROAD OPENING PERMITS FROM THE ROCKLAND COUNTY HIGHWAY DEPARTMENT PRIOR TO THE INSTALLATION OF UTILITIES. CONSTRUCTION, MAINTENANCE AND PROTECTION OF TRAFFIC SHALL BE CARRIED OUT IN ACCORDANCE WITH ALL APPLICABLE REGULATIONS.

GENERAL UTILITY NOTES

- REFER TO MEP DRAWINGS FOR INTERNAL BUILDING PIPING AND CONNECTIONS. ANY DISCREPANCIES BETWEEN MEP DRAWINGS POINTS OF EXIT SHALL BE BROUGHT TO THE ATTENTION OF ALL PARTIES.
- THE CONTRACTOR SHALL REFER TO MEP DRAWINGS FOR ADDITIONAL INFORMATION PERTAINING TO THE ELECTRIC SERVICE, TRANSFORMERS, AND SWITCH GEARS. ALL CONSTRUCTION SHALL BE IN ACCORDANCE WITH THE APPLICABLE CODES AND RECEIVE APPROVAL FROM ORANGE AND ROCKLAND.
- GAS SERVICE LINES ARE SHOWN FOR ROUTING PURPOSES ONLY. REFER TO MEP DRAWINGS FOR ADDITIONAL INFORMATION FOR THE GAS SERVICE LINES AND CONNECTIONS. ALL WORK SHALL BE PERFORMED IN ACCORDANCE WITH THE APPLICABLE CODES AND WITH THE APPROVAL OF ORANGE AND ROCKLAND.
- WATER SERVICE LINES SHALL BE COORDINATED WITH SUEZ WATER. ALL WORK SHALL BE PERFORMED IN ACCORDANCE WITH THE APPLICABLE CODES AND WITH THE APPROVAL OF SUEZ WATER.
- TEMPORARY SERVICES SHALL BE MAINTAINED THROUGHOUT CONSTRUCTION AND SHALL BE INSTALLED IN ACCORDANCE WITH THE APPLICABLE CODES.

UTILITY NOTES

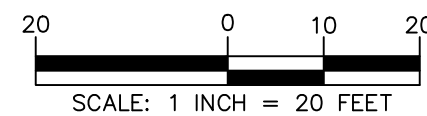
- THE CONTRACTOR SHALL CALL "DIG SAFELY NEW YORK" AT 1-800-962-7962 OR 811 FOR STAKE OUT REQUESTS AT LEAST 72 HOURS PRIOR TO EXCAVATION IN ACCORDANCE WITH LOCAL, STATE, AND FEDERAL SAFETY CODES.
- ALL STRUCTURES PERTAINING TO THE SEWER SYSTEM, SUCH AS PIPES, MANHOLES, BUILDING CONNECTIONS AND ALL OTHER WORK, SHALL BE CARRIED OUT IN ACCORDANCE WITH REQUIREMENTS OF RULES AND REGULATIONS AS SET FORTH BY ROCKLAND COUNTY SEWER DISTRICT NO. 1 AND ROCKLAND COUNTY DEPARTMENT OF HEALTH.
- ALL CONNECTIONS TO EXISTING MANHOLES SHALL BE CARRIED OUT IN ACCORDANCE WITH THE REQUIREMENTS OF THE GOVERNING AGENCY OR MUNICIPALITY.
- CABLE, ELECTRIC, TELEPHONE, AND GAS SERVICE LINES ARE TO BE COORDINATED WITH THE LOCAL RESPECTIVE UTILITY COMPANIES. PLAN REPRESENTATION OF THE SERVICE LINES ARE FOR PERMITTING PURPOSES. THE CONTRACTOR IS TO FOLLOW ALL UTILITY SEPARATION DISTANCES OF THE GOVERNING AGENCY.
- CONTRACTOR TO VERIFY SIZES OF ALL STRUCTURES BEFORE PURCHASING AND INSTALLING. ACTUAL SIZES OF STRUCTURES MAY DIFFER THAN PLAN REPRESENTATION. IF DESIGNED LAYOUT CANNOT BE ACHIEVED, CONTRACTOR TO CONTACT ENGINEER TO ENSURE COMPLIANCE WITH REGULATIONS.
- EXISTING UTILITIES TO ANIMAL SHELTER SHALL REMAIN IN SERVICE UNTIL NEW FACILITY IS OPERATIONAL.

LEGEND

PROPOSED UTILITY PLAN

PROPOSED PROPERTY LINE
PROPOSED COMBINED CABLE, TELECOMMUNICATION, AND ELECTRICAL LINE
PROPOSED ELECTRICAL LINE
PROPOSED GAS SERVICE LINE
PROPOSED FIRE WATER LINE
PROPOSED WATER LINE
PROPOSED SANITARY SEWER SERVICE LATERAL
PROPOSED CLEANOUT
PROPOSED LIGHT FIXTURE
CONCRETE ENCASEMENT
PROPOSED VALVE

CTE
E
G
FW
W
S
•
•
•



LANGAN
Langan Engineering, Environmental, Surveying, Landscape Architecture and Geology, D.P.C.
One North Broadway, Suite 910
White Plains, NY 10601
T: 914.323.7400 F: 914.323.7401 www.langan.com

SIGNATURE: MICHAEL FINAN, PE, LEED-AP
DATE SIGNED: 20 OCT. 2021
PROFESSIONAL ENGINEER NY Lic. No. 081473

CAPITAL PROJECT 1483
CONSTRUCTION OF A NEW ANIMAL SHELTER FACILITY
65 FIREMENS MEMORIAL DRIVE, POMONA, NY 10970

UTILITY PLAN

CU101

REVISION	NO.	DESCRIPTION	DATE
1.	1.		11/21

ARCHITECTS SEAL: West Coast Office
23101 Mulholland Hwy #106
Encinitas, CA 92023
Tel: 760.948.0030
Fax: 760.948.0030
F: 617.626.8257

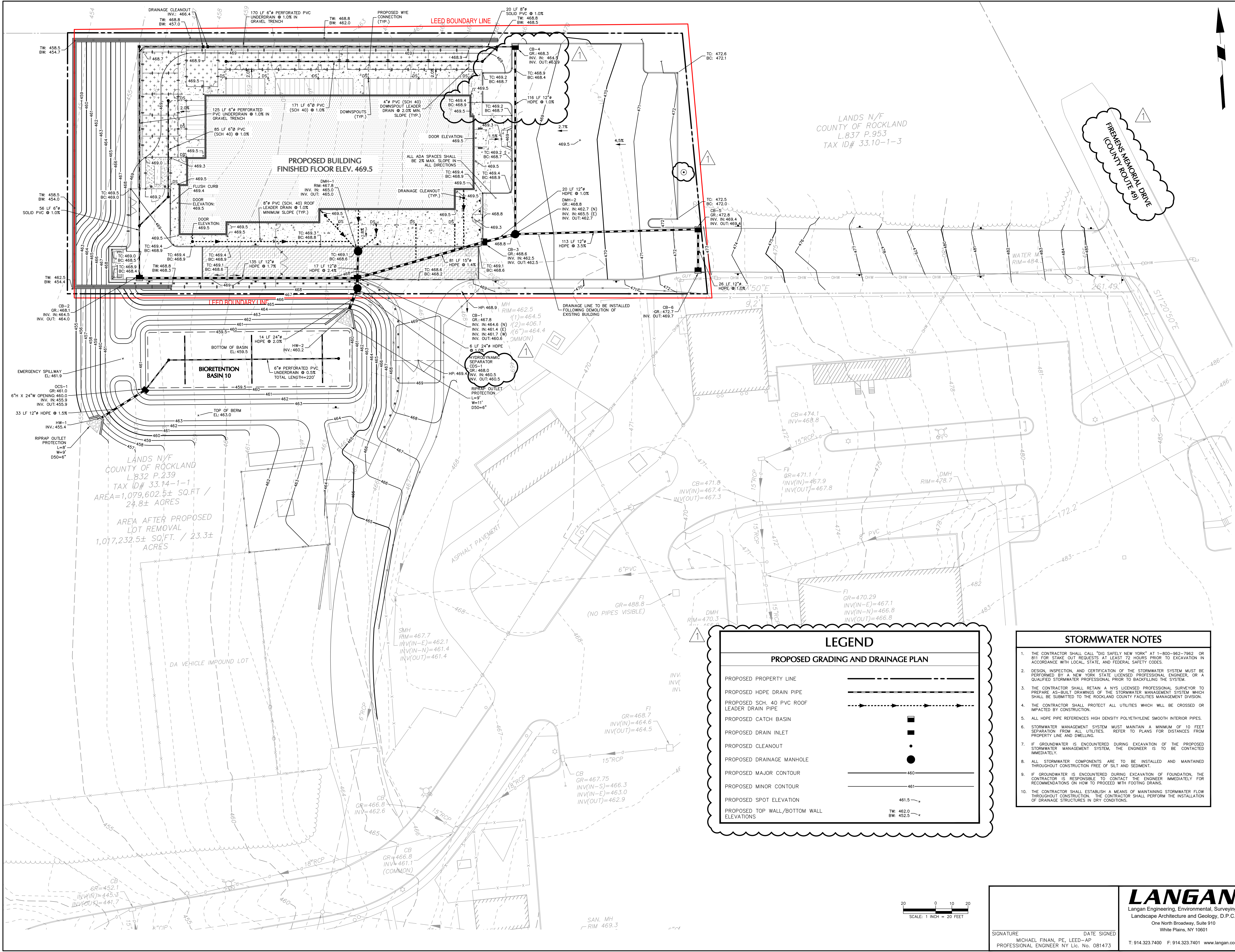
East Coast Office
97 Broadway
New York, NY 10005
Tel: 212.693.1116
Fax: 212.693.1116
F: 617.626.8257

rauhaus freedentfeld & associates

DRAWN BY: SS
CHECKED BY: JK
SCALE: 1" = 20'
DATE: 20 OCT. 2021
PROJECT NO: #2019

PROGRESS SET: ☐ BID SET: ☐ PERMIT SET: ☐ CONSTRUCTION SET: ☐

2021 MANUALS & RESOURCES BY A ASSOCIATES, LLP



LEGEND

PROPOSED GRADING AND DRAINAGE PLAN

PROPOSED PROPERTY LINE

PROPOSED HDPE DRAIN PIPE

PROPOSED SCH. 40 PVC ROOF LEADER DRAIN PIPE

PROPOSED CATCH BASIN

PROPOSED DRAIN INLET

PROPOSED CLEANOUT

PROPOSED DRAINAGE MANHOLE

PROPOSED MAJOR CONTOUR

PROPOSED MINOR CONTOUR

PROPOSED SPOT ELEVATION

PROPOSED TOP WALL/BOTTOM WALL ELEVATIONS

460

461

461.5

TW: 462.0
BW: 452.5

- STORMWATER NOTES
1. THE CONTRACTOR SHALL CALL "DIG SAFELY NEW YORK" AT 1-800-962-7862 OR 811 FOR STAKE OUT REQUESTS AT LEAST 72 HOURS PRIOR TO EXCAVATION IN ACCORDANCE WITH LOCAL, STATE, AND FEDERAL SAFETY CODES.

2. DESIGN, INSPECTION, AND CERTIFICATION OF THE STORMWATER SYSTEM MUST BE PERFORMED BY A NEW YORK STATE LICENSED PROFESSIONAL ENGINEER, OR A QUALIFIED STORMWATER PROFESSIONAL PRIOR TO BACKFILLING THE SYSTEM.

3. THE CONTRACTOR SHALL RETAIN A NYS LICENSED PROFESSIONAL SURVEYOR TO PREPARE AS-BUILT DRAWINGS OF THE STORMWATER MANAGEMENT SYSTEM WHICH SHALL BE SUBMITTED TO THE ROCKLAND COUNTY FACILITIES MANAGEMENT DIVISION.

4. THE CONTRACTOR SHALL PROTECT ALL UTILITIES WHICH WILL BE CROSSED OR IMPACTED BY CONSTRUCTION.

5. ALL HDPE PIPE REFERENCES HIGH DENSITY POLYETHYLENE SMOOTH INTERIOR PIPES.

6. STORMWATER MANAGEMENT SYSTEM MUST MAINTAIN A MINIMUM OF 10 FEET SEPARATION FROM ALL UTILITIES. REFER TO PLANS FOR DISTANCES FROM PROPERTY LINE AND DWELLING.

7. IF GROUNDWATER IS ENCOUNTERED DURING EXCAVATION OF THE PROPOSED STORMWATER MANAGEMENT SYSTEM, THE ENGINEER IS TO BE CONTACTED IMMEDIATELY.

8. ALL STORMWATER COMPONENTS ARE TO BE INSTALLED AND MAINTAINED THROUGHOUT CONSTRUCTION FREE OF SILT AND SEDIMENT.

9. IF GROUNDWATER IS ENCOUNTERED DURING EXCAVATION OF FOUNDATION, THE CONTRACTOR IS RESPONSIBLE TO CONTACT THE ENGINEER IMMEDIATELY FOR RECOMMENDATIONS ON HOW TO PROCEED WITH FOOTING DRAINS.

10. THE CONTRACTOR SHALL ESTABLISH A MEANS OF MAINTAINING STORMWATER FLOW THROUGHOUT CONSTRUCTION. THE CONTRACTOR SHALL PERFORM THE INSTALLATION OF DRAINAGE STRUCTURES IN DRY CONDITIONS.

SIGNATURE
MICHAEL FINAN, PE, LEED-AP
PROFESSIONAL ENGINEER NY Lic. No. 081473

DATE SIGNED
20 OCT. 2021

LANGAN

Langran Engineering, Environmental, Surveying,
Landscape Architecture and Geology, D.P.C.
One North Broadway, Suite 910
White Plains, NY 10601

T: 914.323.7400 F: 914.323.7401 www.langan.com

CAPITAL PROJECT 1483
CONSTRUCTION OF A NEW ANIMAL SHELTER FACILITY
65 FIREMENS MEMORIAL DRIVE, POMONA, NY 10970

SS
DRAWN BY:
JK
CHECKED BY:
DATE: 20 OCT. 2021

PROJECT NO: #2019

ARCHITECTS SEAL

West Coast Office
23101 Mulliken Pkwy #106
Folsom, CA 95630
T: 916.716.9253
F: 916.716.9559

East Coast Office
97 Broadway
New York, NY 10006
T: 811.716.9253
F: 811.716.9559

rauhaus freedreinfeld & associates

REVISION

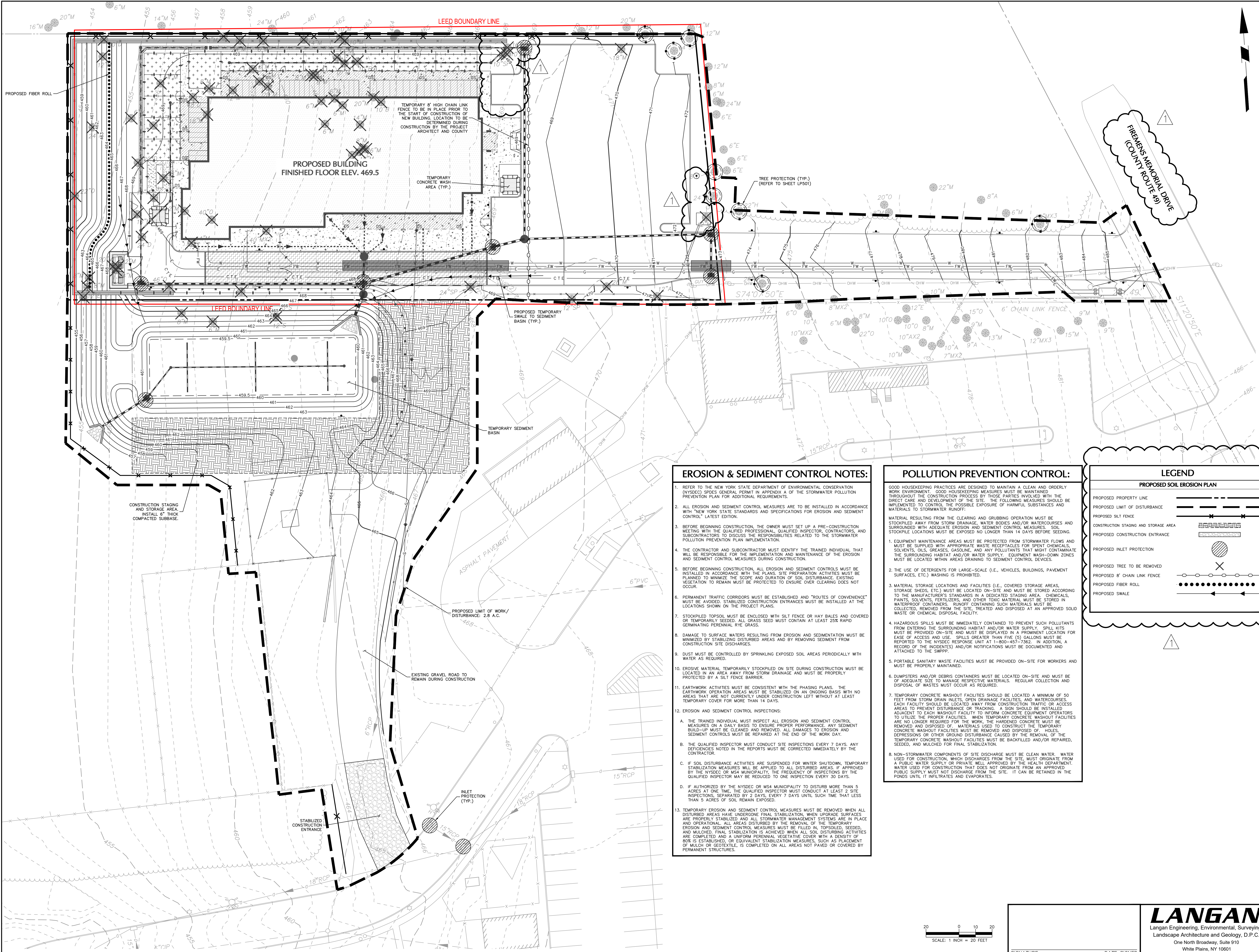
NO. 1

DESCRIPTION

DATE 11/21

GRADING & DRAINAGE PLAN

CG101



EROSION & SEDIMENT CONTROL NOTES:

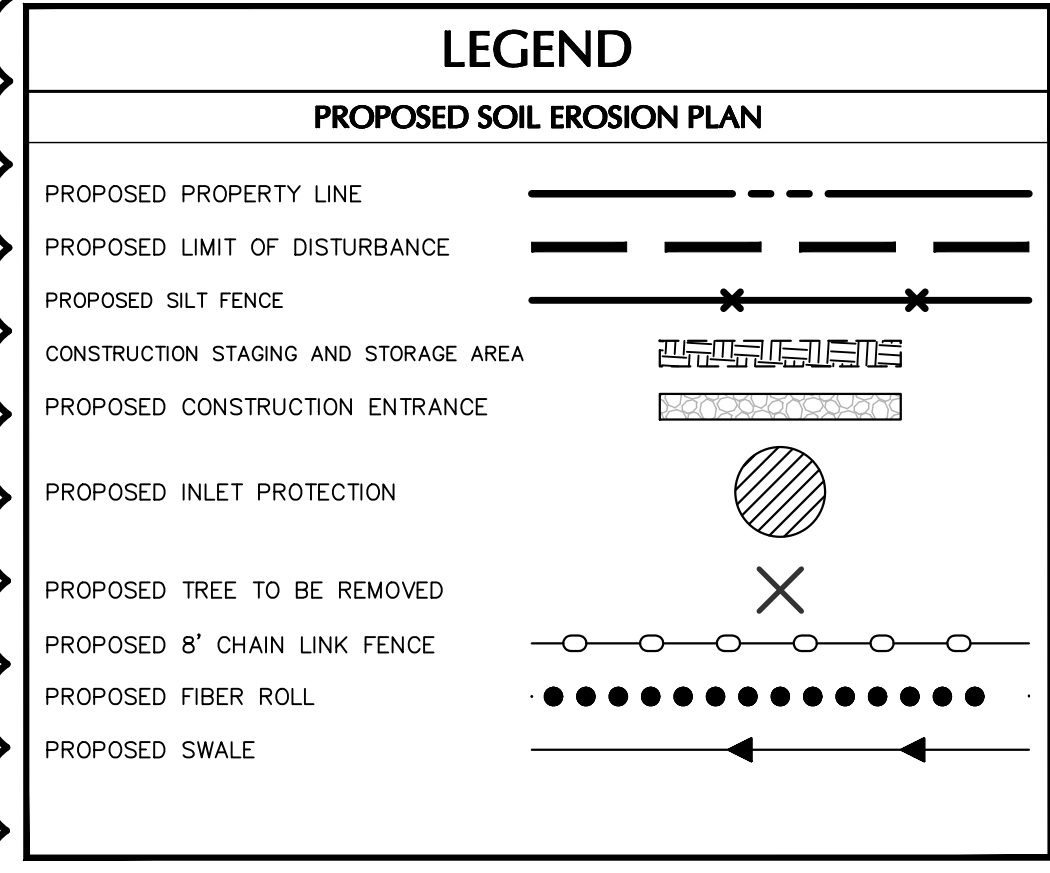
1. REFER TO THE NEW YORK STATE DEPARTMENT OF ENVIRONMENTAL CONSERVATION (NYSDEC) SPDES GENERAL PERMIT IN APPENDIX A OF THE STORMWATER POLLUTION PREVENTION PLAN FOR ADDITIONAL REQUIREMENTS.
2. ALL EROSION AND SEDIMENT CONTROL MEASURES ARE TO BE INSTALLED IN ACCORDANCE WITH "NEW YORK STATE STANDARDS AND SPECIFICATIONS FOR EROSION AND SEDIMENT CONTROL" LATEST EDITION.
3. BEFORE BEGINNING CONSTRUCTION, THE OWNER MUST SET UP A PRE-CONSTRUCTION MEETING WITH THE QUALIFIED PROFESSIONAL, QUALIFIED INSPECTOR, CONTRACTORS, AND SUBCONTRACTORS TO DISCUSS THE RESPONSIBILITIES RELATED TO THE STORMWATER POLLUTION PREVENTION PLAN IMPLEMENTATION.
4. THE CONTRACTOR AND SUBCONTRACTOR MUST IDENTIFY THE TRAINED INDIVIDUAL THAT WILL BE RESPONSIBLE FOR THE IMPLEMENTATION AND MAINTENANCE OF THE EROSION AND SEDIMENT CONTROL MEASURES DURING CONSTRUCTION.
5. BEFORE BEGINNING CONSTRUCTION, ALL EROSION AND SEDIMENT CONTROLS MUST BE INSTALLED IN ACCORDANCE WITH THE PLANS. SITE PREPARATION ACTIVITIES MUST BE PLANNED TO MINIMIZE THE SCOPE AND DURATION OF SOIL DISTURBANCE. EXISTING VEGETATION TO REMAIN MUST BE PROTECTED TO ENSURE OVER CLEARING DOES NOT OCCUR.
6. PERMANENT TRAFFIC CORRIDORS MUST BE ESTABLISHED AND "ROUTES OF CONVENIENCE" MUST BE AVOIDED. STABILIZED CONSTRUCTION ENTRANCES MUST BE INSTALLED AT THE LOCATIONS SHOWN ON THE PROJECT PLANS.
7. STOCKPILED TOPSOIL MUST BE ENCLOSED WITH SILT FENCE OR HAY BALES AND COVERED OR TEMPORARILY SEEDED. ALL GRASS SEED MUST CONTAIN AT LEAST 25% RAPID GERMINATING PERENNIAL RYE GRASS.
8. DAMAGE TO SURFACE WATERS RESULTING FROM EROSION AND SEDIMENTATION MUST BE MINIMIZED BY STABILIZING DISTURBED AREAS AND BY REMOVING SEDIMENT FROM CONSTRUCTION SITE DISCHARGES.
9. DUST MUST BE CONTROLLED BY SPRINKLING EXPOSED SOIL AREAS PERIODICALLY WITH WATER AS REQUIRED.
10. ERODIBLE MATERIAL TEMPORARILY STOCKPILED ON SITE DURING CONSTRUCTION MUST BE LOCATED IN AN AREA AWAY FROM STORM DRAINAGE AND MUST BE PROPERLY PROTECTED BY A SILT FENCE BARRIER.
11. EARTHWORK ACTIVITIES MUST BE CONSISTENT WITH THE PHASING PLANS. THE EARTHWORK OPERATION AREAS MUST BE STABILIZED ON AN ONGOING BASIS WITH NO AREAS THAT ARE NOT CURRENTLY UNDER CONSTRUCTION LEFT WITHOUT AT LEAST TEMPORARY COVER FOR MORE THAN 14 DAYS.
12. EROSION AND SEDIMENT CONTROL INSPECTIONS:
 - A. THE TRAINED INDIVIDUAL MUST INSPECT ALL EROSION AND SEDIMENT CONTROL MEASURES ON A DAILY BASIS TO ENSURE PROPER PERFORMANCE. ANY SEDIMENT BUILD-UP MUST BE CLEANED AND REMOVED. ALL DAMAGES TO EROSION AND SEDIMENT CONTROLS MUST BE REPAIRED AT THE END OF THE WORK DAY.
 - B. THE QUALIFIED INSPECTOR MUST CONDUCT SITE INSPECTIONS EVERY 7 DAYS. ANY DEFICIENCIES NOTED IN THE REPORTS MUST BE CORRECTED IMMEDIATELY BY THE CONTRACTOR.
 - C. IF SOIL DISTURBANCE ACTIVITIES ARE SUSPENDED FOR WINTER SHUTDOWN, TEMPORARY STABILIZATION MEASURES WILL BE APPLIED TO ALL DISTURBED AREAS. IF APPROVED BY THE NYSDEC OR MSA MUNICIPALITY, THE FREQUENCY OF INSPECTIONS BY THE QUALIFIED INSPECTOR MAY BE REDUCED TO ONE INSPECTION EVERY 30 DAYS.
 - D. IF AUTHORIZED BY THE NYSDEC OR MSA MUNICIPALITY TO DISTURB MORE THAN 5 ACRES AT ONE TIME, THE QUALIFIED INSPECTOR MUST CONDUCT AT LEAST 2 SITE INSPECTIONS, SEPARATED BY 2 DAYS, EVERY 7 DAYS UNTIL SUCH TIME THAT LESS THAN 5 ACRES OF SOIL REMAIN EXPOSED.
13. TEMPORARY EROSION AND SEDIMENT CONTROL MEASURES MUST BE REMOVED WHEN ALL DISTURBED AREAS HAVE UNDERGONE FINAL STABILIZATION, WHEN UPGRADE SURFACES ARE PROPERLY STABILIZED AND ALL STORMWATER MANAGEMENT SYSTEMS ARE IN PLACE AND OPERATIONAL. ALL AREAS DISTURBED BY THE REMOVAL OF THE TEMPORARY EROSION AND SEDIMENT CONTROL MEASURES MUST BE FILLED IN, TOPSOILED, SEEDED, AND MULCHED. FINAL STABILIZATION IS ACHIEVED WHEN ALL SOIL DISTURBING ACTIVITIES ARE COMPLETED AND A UNIFORM PERENNIAL VEGETATIVE COVER WITH A DENSITY OF 80% IS ESTABLISHED, OR EQUIVALENT STABILIZATION MEASURES, SUCH AS PLACEMENT OF MULCH OR GEOTEXTILE, IS COMPLETED ON ALL AREAS NOT PAVED OR COVERED BY PERMANENT STRUCTURES.

POLLUTION PREVENTION CONTROL:

GOOD HOUSEKEEPING PRACTICES ARE DESIGNED TO MAINTAIN A CLEAN AND ORDERLY WORK ENVIRONMENT. GOOD HOUSEKEEPING MEASURES MUST BE MAINTAINED THROUGHOUT THE CONSTRUCTION PROCESS BY THOSE PARTIES INVOLVED WITH THE DIRECT CARE AND DEVELOPMENT OF THE SITE. THE FOLLOWING MEASURES SHOULD BE IMPLEMENTED TO CONTROL THE POSSIBLE EXPOSURE OF HARMFUL SUBSTANCES AND MATERIALS TO STORMWATER RUNOFF:

MATERIAL RESULTING FROM THE CLEARING AND GRUBBING OPERATION MUST BE STOCKPILED AWAY FROM STORM DRAINAGE, WATER BODIES AND/OR WATERCOURSES AND SURROUNDED WITH ADEQUATE EROSION AND SEDIMENT CONTROL MEASURES. SOIL STOCKPILE LOCATIONS MUST BE EXPOSED NO LONGER THAN 14 DAYS BEFORE SEEDING.

1. EQUIPMENT MAINTENANCE AREAS MUST BE PROTECTED FROM STORMWATER FLOWS AND MUST BE SUPPLIED WITH APPROPRIATE WASTE RECEPTACLES FOR SPENT CHEMICALS, SOLVENTS, OILS, GREASES, GASOLINE, AND ANY POLLUTANTS THAT MIGHT CONTAMINATE THE SURROUNDING HABITAT AND/OR WATER SUPPLY. EQUIPMENT WASH-DOWN ZONES MUST BE LOCATED WITHIN AREAS DRAINING TO SEDIMENT CONTROL DEVICES.
2. THE USE OF DETERGENTS FOR LARGE-SCALE (I.E., VEHICLES, BUILDINGS, PAVEMENT SURFACES, ETC.) WASHING IS PROHIBITED.
3. MATERIAL STORAGE LOCATIONS AND FACILITIES (I.E., COVERED STORAGE AREAS, STORAGE SHEDS, ETC.) MUST BE LOCATED ON-SITE AND MUST BE STORED ACCORDING TO THE MANUFACTURER'S STANDARDS IN A DEDICATED STAGING AREA. CHEMICALS, PAINTS, SOLVENTS, FERTILIZERS, AND OTHER TOXIC MATERIAL MUST BE STORED IN WATERPROOF CONTAINERS. RUNOFF CONTAINING SUCH MATERIALS MUST BE COLLECTED, REMOVED FROM THE SITE, TREATED AND DISPOSED AT AN APPROVED SOLID WASTE OR CHEMICAL DISPOSAL FACILITY.
4. HAZARDOUS SPILLS MUST BE IMMEDIATELY CONTAINED TO PREVENT SUCH POLLUTANTS FROM ENTERING THE SURROUNDING HABITAT AND/OR WATER SUPPLY. SPILL KITS MUST BE PROVIDED ON-SITE AND MUST BE DISPLAYED IN A PROMINENT LOCATION FOR EASE OF ACCESS AND USE. SPILLS GREATER THAN FIVE (5) GALLONS MUST BE REPORTED TO THE NYSDEC RESPONSE UNIT AT 1-800-457-7362. IN ADDITION, A RECORD OF THE INCIDENT(S) AND/OR NOTIFICATIONS MUST BE DOCUMENTED AND ATTACHED TO THE SWPPP.
5. PORTABLE SANITARY WASTE FACILITIES MUST BE PROVIDED ON-SITE FOR WORKERS AND MUST BE PROPERLY MAINTAINED.
6. DUMPSTERS AND/OR DEBRIS CONTAINERS MUST BE LOCATED ON-SITE AND MUST BE OF ADEQUATE SIZE TO MANAGE RESPECTIVE MATERIALS. REGULAR COLLECTION AND DISPOSAL OF WASTES MUST OCCUR AS REQUIRED.
7. TEMPORARY CONCRETE WASHOUT FACILITIES SHOULD BE LOCATED A MINIMUM OF 50 FEET FROM STORM DRAIN INLETS, OPEN DRAINAGE FACILITIES, AND WATERCOURSES. EACH FACILITY SHOULD BE LOCATED AWAY FROM CONSTRUCTION TRAFFIC OR ACCESS AREAS TO PREVENT DISTURBANCE OR TRACKING. A SIGN SHOULD BE INSTALLED ADJACENT TO EACH WASHOUT FACILITY TO INFORM CONCRETE EQUIPMENT OPERATORS TO UTILIZE THE PROPER FACILITIES. WHEN TEMPORARY CONCRETE WASHOUT FACILITIES ARE NO LONGER REQUIRED FOR THE WORK, THE HARDENED CONCRETE MUST BE REMOVED AND DISPOSED OF. MATERIALS USED TO CONSTRUCT TEMPORARY CONCRETE WASHOUT FACILITIES MUST BE REMOVED AND DISPOSED OF. HOLES, DEPRESSIONS OR OTHER GROUND DISTURBANCE CAUSED BY THE REMOVAL OF THE TEMPORARY CONCRETE WASHOUT FACILITIES MUST BE BACKFILLED AND/OR REPAIRED, SEEDED, AND MULCHED FOR FINAL STABILIZATION.
8. NON-STORMWATER COMPONENTS OF SITE DISCHARGE MUST BE CLEAN WATER. WATER USED FOR CONSTRUCTION, WHICH DISCHARGES FROM THE SITE, MUST ORIGINATE FROM A PUBLIC WATER SUPPLY OR PRIVATE WELL APPROVED BY THE HEALTH DEPARTMENT. WATER USED FOR CONSTRUCTION THAT DOES NOT ORIGINATE FROM AN APPROVED POND SUPPLY MUST NOT DISCHARGE FROM THE SITE. IT CAN BE RETAINED IN THE POND UNTIL IT INFILTRATES AND EVAPORATES.



REVISION
NO. 1
DATE 11/21

ARCHITECTS SEAL
West Coast Office
23101 Mission Pkwy #106
Fremont, CA 94533
T: 877.766.0531
F: 949.716.8959
East Coast Office
97 Broadway
New York, NY 10003
T: 877.766.0531
F: 877.766.8557

rauhaus freeseitfeld & associates

CAPITAL PROJECT 1483
CONSTRUCTION OF A NEW ANIMAL SHELTER FACILITY
65 FIREMENS MEMORIAL DRIVE, POMONA, NY 10970

SS JK
DRAWN BY: JK
CHECKED BY: JK
SCALE: 1" = 20'
DATE: 20 OCT. 2021
PROJECT NO: #2019

PROGRESS SET ☐ BID SET ☒ PERMIT SET ☐ CONSTRUCTION SET ☐

CE101

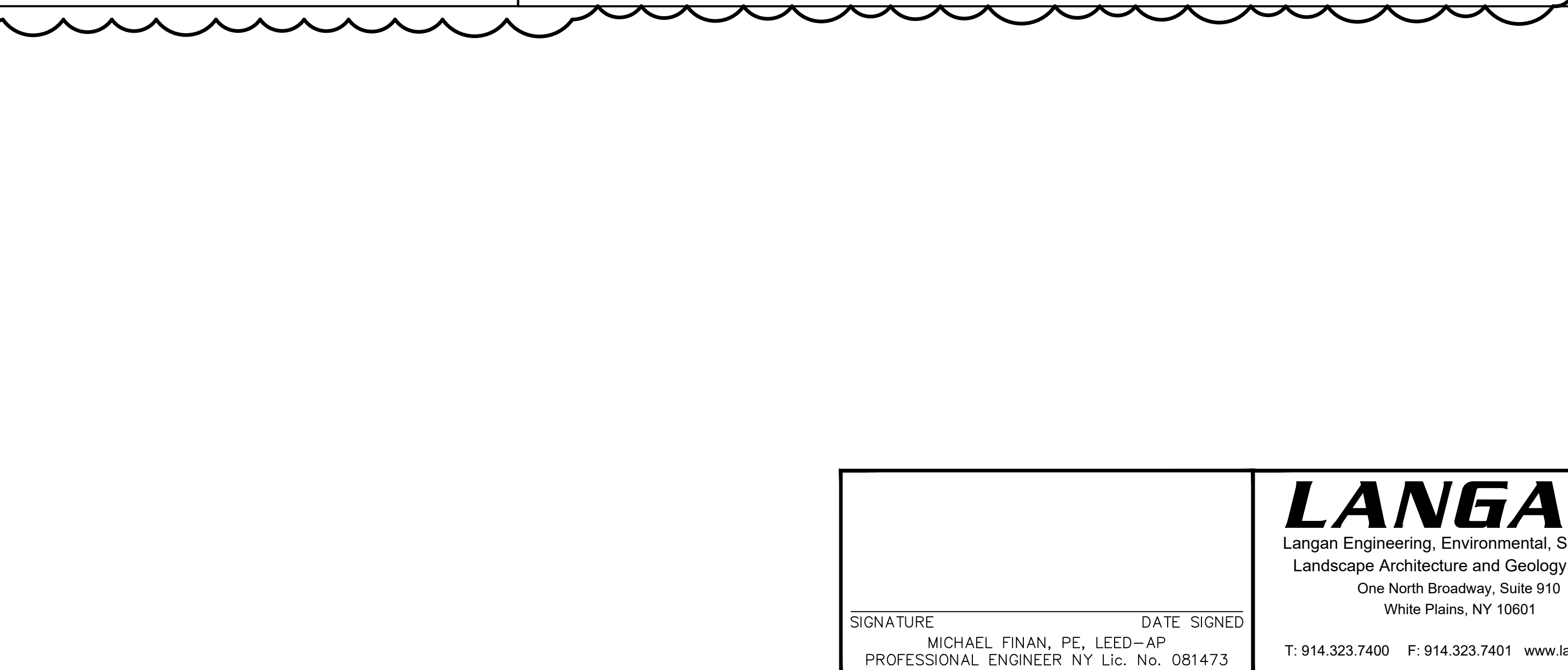
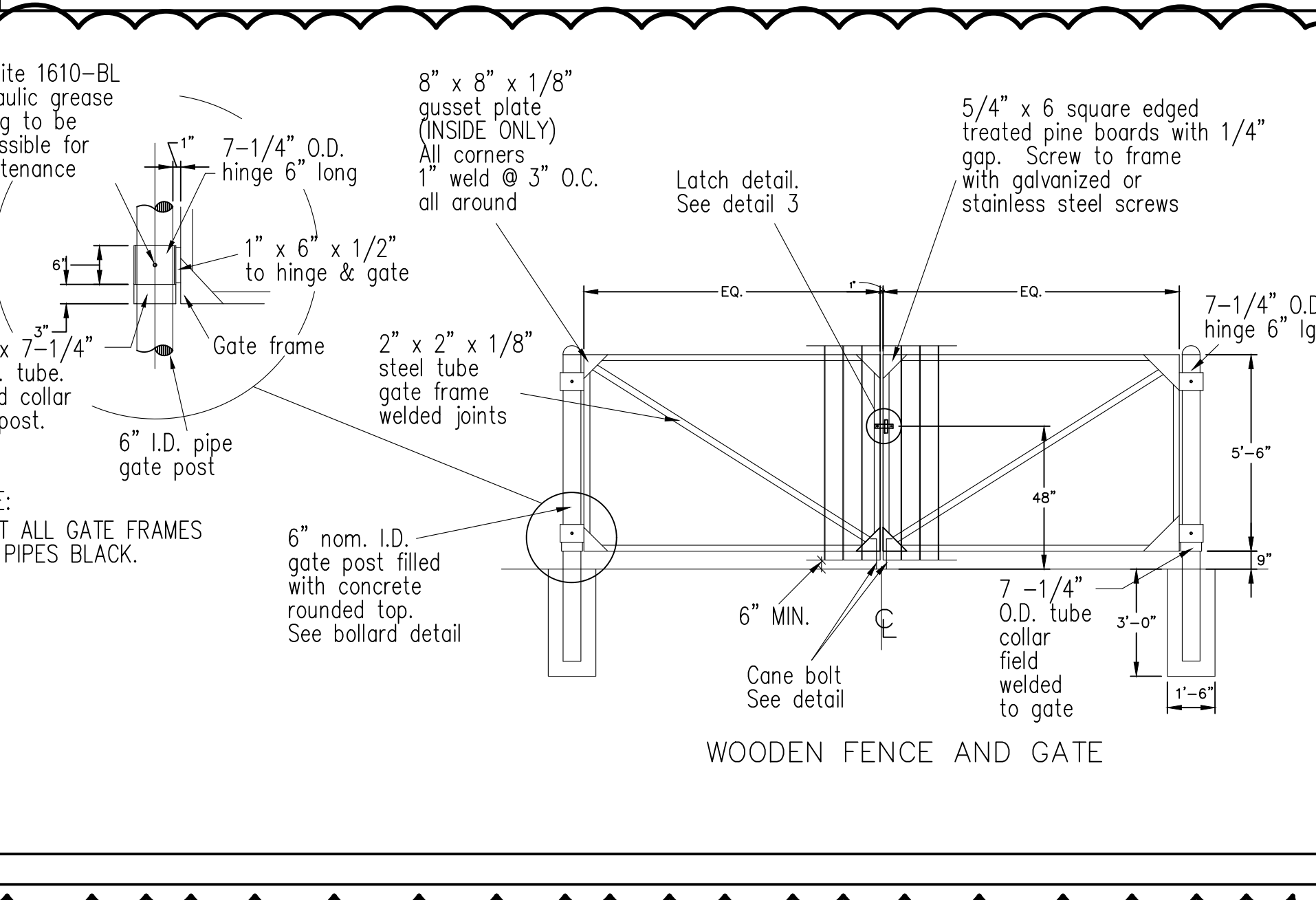
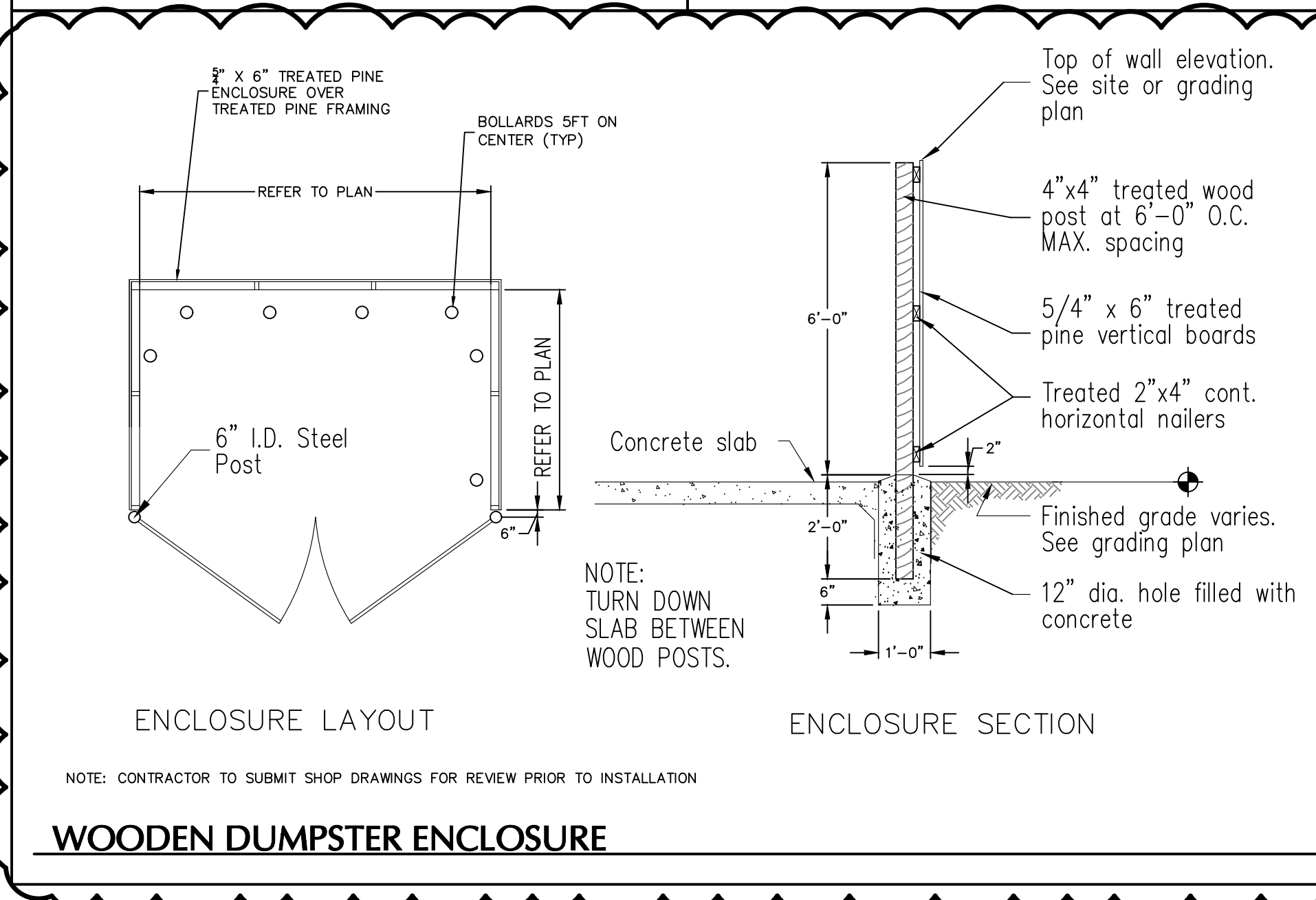
2021 RAUHAUS FREESEITFELD ASSOCIATES, LLP

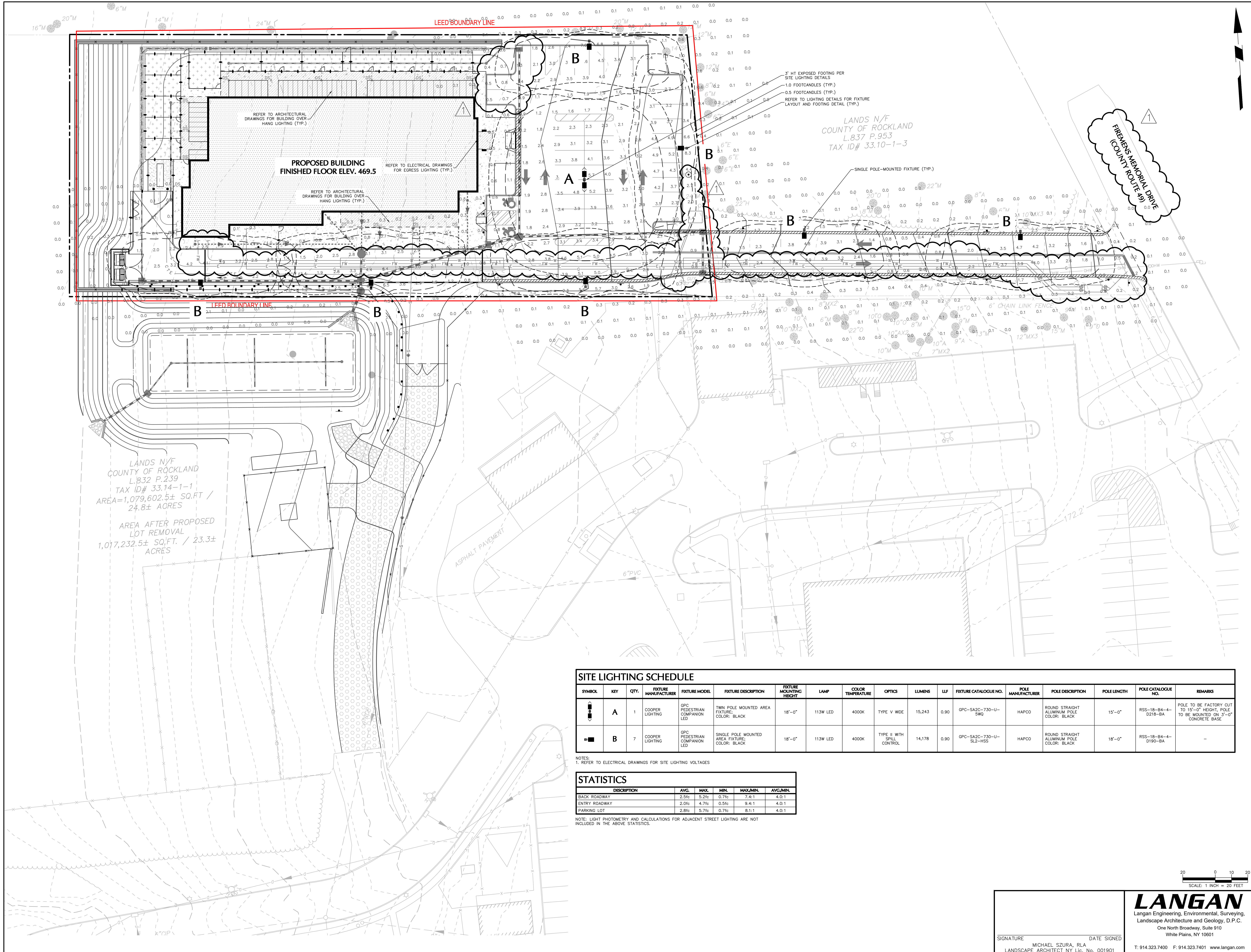
LANGAN
Langan Engineering, Environmental, Surveying,
Landscape Architecture and Geology, D.P.C.
One North Broadway, Suite 910
White Plains, NY 10601
T: 914.323.7400 F: 914.323.7401 www.langan.com



SIGNATURE
MICHAEL FINAN, PE, LEED-AP
PROFESSIONAL ENGINEER NY Lic. No. 081473

DATE SIGNED
20 OCT. 2021

Filename: \\Langan.com\data\proj\190070001\Project Data\CAD\01\Sheet\Site Plan Approval\190070001-CE101-0101.dwg Date: 11/15/2021 Time: 23:36 User: janner Style Table: Langan.stb Layout: ARCB-BS





SITE LIGHTING SCHEDULE																	
SYMBOL	KEY	QTY.	FIXTURE MANUFACTURER	FIXTURE MODEL	FIXTURE DESCRIPTION	FIXTURE MOUNTING HEIGHT	LAMP	COLOR TEMPERATURE	OPTICS	LUMENS	LLF	FIXTURE CATALOGUE NO.	POLE MANUFACTURER	POLE DESCRIPTION	POLE LENGTH	POLE CATALOGUE NO.	REMARKS
	A	1	COOPER LIGHTING	GPC PEDESTRIAN COMPANION LED	TWIN POLE MOUNTED AREA FIXTURE; COLOR: BLACK	18'-0"	113W LED	4000K	TYPE V WIDE	15,243	0.90	GPC-SA2C-730-U-SW0	HAPCO	ROUND STRAIGHT ALUMINUM POLE COLOR: BLACK	15'-0"	RSS-18-B4-4-D218-BA	POLE TO BE FACTORY CUT TO 15'-0" HEIGHT; POLE TO BE MOUNTED ON 3'-0" CONCRETE BASE
	B	7	COOPER LIGHTING	GPC PEDESTRIAN COMPANION LED	SINGLE POLE MOUNTED AREA FIXTURE; COLOR: BLACK	18'-0"	113W LED	4000K	TYPE II WITH SPILL CONTROL	14,178	0.90	GPC-SA2C-730-U-SL2-HSS	HAPCO	ROUND STRAIGHT ALUMINUM POLE COLOR: BLACK	18'-0"	RSS-18-B4-4-D190-BA	-

NOTES:
1. REFER TO ELECTRICAL DRAWINGS FOR SITE LIGHTING VOLTAGES

STATISTICS				
DESCRIPTION	AVG.	MAX.	MIN.	MAX./MIN.
BACK ROADWAY	2.5fc	5.2fc	0.7fc	7.4:1
ENTRY ROADWAY	2.0fc	4.7fc	0.5fc	9.4:1
PARKING LOT	2.8fc	5.7fc	0.7fc	8.1:1

NOTE: LIGHT PHOTOMETRY AND CALCULATIONS FOR ADJACENT STREET LIGHTING ARE NOT INCLUDED IN THE ABOVE STATISTICS.

20 0 10 20
SCALE: 1 INCH = 20 FEET

SIGNATURE
MICHAEL SZURA, RLA
LANDSCAPE ARCHITECT NY Lic. No. 001901

DATE SIGNED
20 OCT 2021

LANGAN
Langan Engineering, Environmental, Surveying,
Landscape Architecture and Geology, D.P.C.
One North Broadway, Suite 910
White Plains, NY 10601

T: 914.323.7400 F: 914.323.7401 www.langan.com

CAPITAL PROJECT 1483
CONSTRUCTION OF A NEW ANIMAL SHELTER FACILITY
65 FIREMENS MEMORIAL DRIVE, POMONA, NY 10970

LL101

SITE LIGHTING PLAN

DRAWN BY: AC
CHECKED BY: MH
SCALE: 1" = 20'
DATE: 20 OCT 2021
PROJECT NO: #2019

PROCESS SET ☐ BID SET ☐ PERMIT SET ☐ CONSTRUCTION SET ☐

ARCHITECTS SEAL:
West Coast Office
22103 Muller Hwy #108
Laguna Hills, CA 92653
F: 949.716.8889
E: info@rf&a.com
East Coast Office
97 Broadway
Boston, MA 02110
F: 617.338.0097
E: info@rf&a.com

rf&a
rauhaus freedfield & associates

REVISION
DESCRIPTION
ADDITION #1

NO. 1
DATE 11/22/21

- COMPLIANCE

3. ALL SITE LIGHTING RELATED WORK AND MATERIALS SHALL COMPLY WITH CITY, COUNTY, AND OTHER APPLICABLE GOVERNING AUTHORITY REQUIREMENTS.

- ## COORDINATION

- #### ROLES AND FOOTINGS

- #### ADJUSTMENT AND INSPECTION

- #### REQUIREMENTS FOR ALTERNATES

21. PHOTOMETRIC LIGHTING TEMPLATE:



- 1



- 2



-

4



LL501

SITE LIGHTING DETAILS

DRAWN BY: AC	CHECKED BY: MH	SCALE: 1" = 20'
DATE: 20 OCT. 2021	PROJECT NO: #2019	

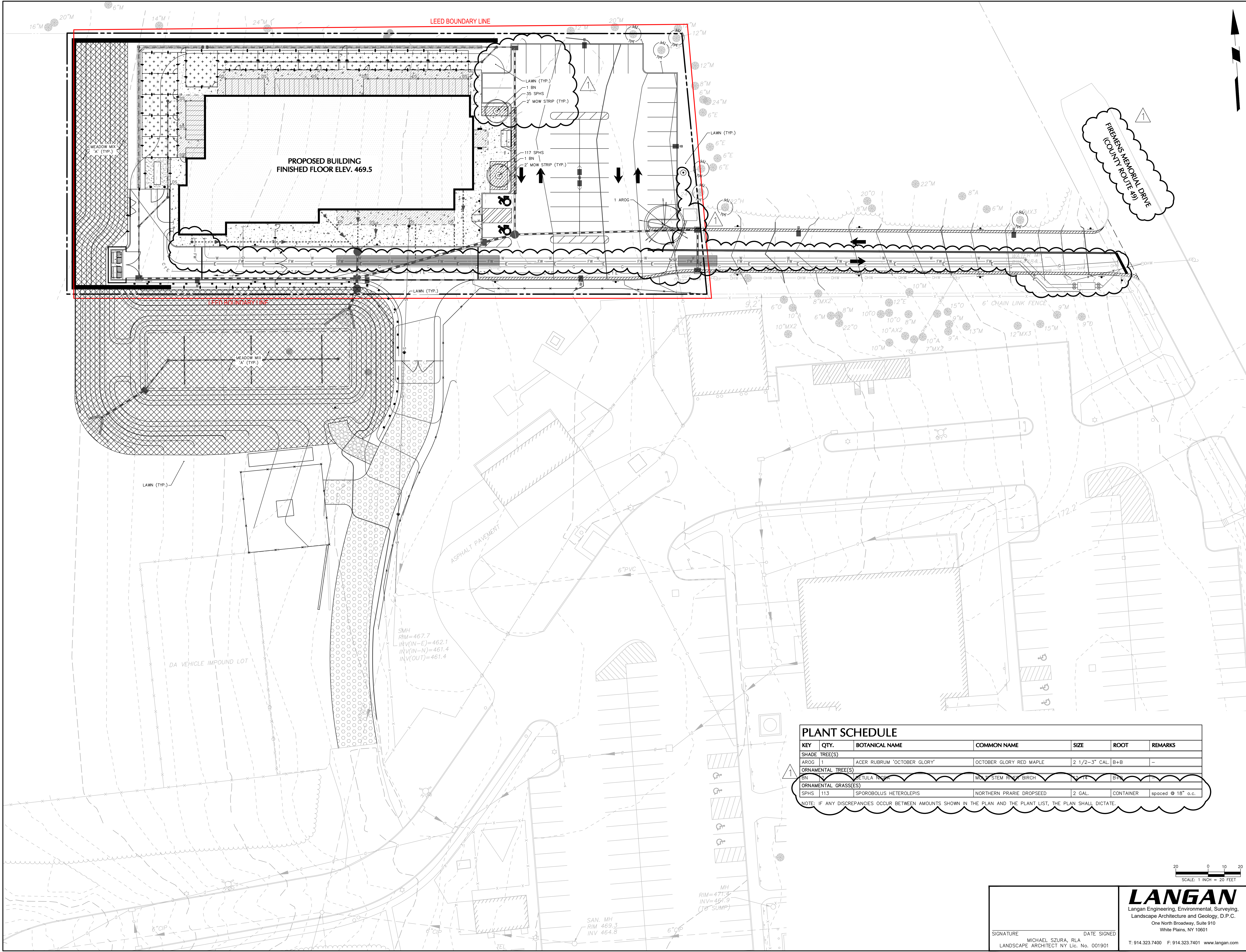
☐ PROGRESS SET
 ☐ BID SET
 ☒ PERMIT SET
 ☐ CONSTRUCTION SET

© 2021 RAJAH'S REENGINEED & ASSOCIATES, LLP

CAPITAL PROJECT 1483
CONSTRUCTION OF A NEW ANIMAL SHELTER FACILITY
65 FIREMENS MEMORIAL DRIVE, POMONA, NY 10970

rf&

REVISION		
NO.	DESCRIPTION	DATE
1.	ADDENDUM #1	11.12.21



LEED BOUNDARY LINE

PROPOSED BUILDING
FINISHED FLOOR ELEV. 469.5

LEED BOUNDARY LINE

FIREMEN'S MEMORIAL DRIVE
(COUNTY ROUTE 49)

PLANT SCHEDULE

KEY	QTY.	BOTANICAL NAME	COMMON NAME	SIZE	ROOT	REMARKS
SHADE TREE(S)						
AROG	1	ACER RUBRUM 'OCTOBER GLORY'	OCTOBER GLORY RED MAPLE	2 1/2-3" CAL.	B+B	-
ORNAMENTAL TREE(S)						
BN	2	BETULA NIGRA	BLACK STEM BIRCH	1 1/2-2" CAL.	B+B	-
ORNAMENTAL GRASS(ES)						
SPHS	113	SPOROBOLUS HETEROLEPIS	NORTHERN PRARIE DROPSOED	2 GAL.	CONTAINER	spaced @ 18" o.c.

NOTE: IF ANY DISCREPANCIES OCCUR BETWEEN AMOUNTS SHOWN IN THE PLAN AND THE PLANT LIST, THE PLAN SHALL DICTATE.

CAPITAL PROJECT 1483 CONSTRUCTION OF A NEW ANIMAL SHELTER FACILITY 65 FIREMENS MEMORIAL DRIVE, POMONA, NY 10970

PLANTING PLAN

LP101

REVISION	NO.	DESCRIPTION	DATE
	1.		11/21

ARCHITECTS SEAL

West Coast Office
23101 Mulden Pkwy #106
Laguna Hills, CA 92653
P: 949.716.0031 F: 949.716.8959

East Coast Office
97 Broadway
Laguna Hills, NY 10970
P: 847.716.0031 F: 847.716.8959



DRAWN BY:	AC	PROJECT NO:	#2019
CHECKED BY:	MH		
SCALE:	1" = 20'		
DATE:	20 OCT. 2021		
PROGRESS SET	<input type="checkbox"/>	CONSTRUCTION SET	<input type="checkbox"/>
BID SET	<input type="checkbox"/>	PERMIT SET	<input type="checkbox"/>
© 2021 RAUHAUS FREEDENTFELD & ASSOCIATES, LLP			

SIGNATURE
MICHAEL SZURA, RLA
LANDSCAPE ARCHITECT NY Lic. No. 001901

DATE SIGNED

LANGAN
Langan Engineering, Environmental, Surveying,
Landscape Architecture and Geology, D.P.C.
One North Broadway, Suite 910
White Plains, NY 10601
T: 914.323.7400 F: 914.323.7401 www.langan.com

