

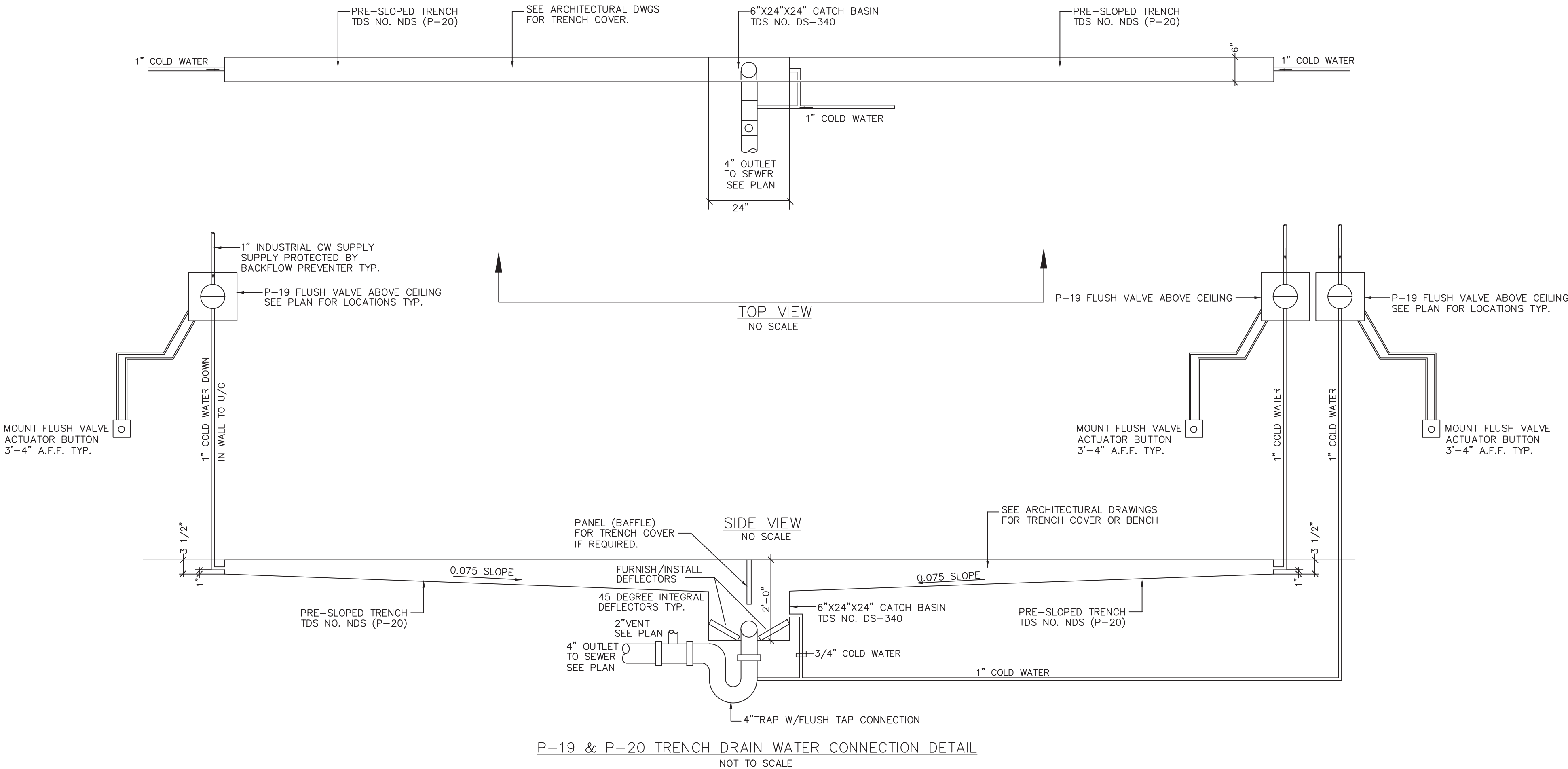
PLUMBING FIXTURE SCHEDULE									
MARK	DESCRIPTION	MINIMUM CONNECTIONS INCHES			REMARKS	MANUFACTURER OR APPROVED EQUAL			
		COLD	HOT	WASTE	VENT				
P-1	WATER CLOSET -- HANDICAP	1	--	3	1 1/2	A.D.A. COMPLIANT	KOHLER K-96057-0 FLOOR MOUNTED/OUTLET FLUSH VALVE TOILET, W/ K-4670-CA-0 SEAT AND SLUAM 1111-16 CHROME PLATED MANUAL FLUSH VALVE, U.S. G.P.F.		
P-2	WALL HUNG LAVATORY -- HANDICAP	1/2	1/2	2	1 1/2	A.D.A. COMPLIANT	KOHLER MODEL K-2351-1 WALL HUNG W/ AC-2187 SINGLE LEVER FAUCET, 1" GRID DRAIN AND INSULATED DRAIN/HOT/COLD WATER, TEMPERING VALVE AND WALL CARRIER, A.D.A. COMPLIANT.		
P-3	MOP SERVICE SINK	3/4	3/4	3	1 1/2	W/ TEMPERING VALVE	SERVITECTURE MODEL 58-501 30"x24"x14" MOP SINK W/ 3/4" DRAIN, TUNG FLANGE, STEEL WILLIAMS T-10-1B FAUCET W/ VACUUM BREAK, HOSE, AND BOBBICK B-223 MOP HOLDER.		
P-4	FLOOR DRAIN W/ TRAP PRIMER	1/2	--	4	2		JOSAM 5000A-1-50 FLOOR DRAIN W/ 45-5566E STRAINER AND TRAP PRIMER.		
P-5	FLOOR DRAIN W/ TRAP PRIMER	1/2	--	3	1 1/2		JOSAM 5000A-1-50 FLOOR DRAIN W/ 45-5566E STRAINER AND TRAP PRIMER.		
P-6	BATHING TUB AND SURROUND	3/4	3/4	2	1 1/2		BRADLEY VET 8000-2-25 BATHING TUB W/ 2" SMALL RAMP STEPS/DROP BATHUB W/ SURROUND, T&S BRASS MODEL 8150-10 6"X10" BATHING TUB W/ 2" SMALL RAMP STEPS/DROP BATHUB DRAIN W/ 1/2" GAP TO JOSAM 4033 8"X50 X 6" FLOOR SINK W/ REMOVABLE GRATE, SEDIMENT BUCKET, AND STAINLESS STEEL MESH BUCKET LINER.		
P-7	HAIR TRAP	--	--	2	--		PROVIDE J.R. SMITH 8750T UNIT TRAP ON WASTE LINE.		
P-8	HYDROSURGE UNIT	3/4	3/4	--	--		INSTALL OWNER FURNISHED HYDROSURGE UNIT W/ INSULATED HOT/COLD WATER SHUT-OFF VALVES, FITTINGS, TAP MIXING VALVE, HOSE BIBB, & VACUUM BREAKER.		
P-9	FROST-PROOF HOSE BIBB	3/4	3/4	--	--	W/ VACUUM BREAKER	JOSAM HYDRASAN 1 SERIES 71050 OR APPROVED EQUAL, KEY CONTROL FITTING, W/ INTEGRAL VACUUM BREAKER.		
P-10	S.S. SINGLE BOWL SINK	1/2	1/2	2	1 1/2	W/ TEMPERING VALVE	EVAAT INDUSTRIES W/ CHROME BUB-TYPE FAUCET W/ 5/8"X30" TOW-UP W/ WREATOR, AND WESTLADE HANDLES, HOT/COLD WATER, STOPS, AND CHROME STRAINER -- A.D.A. COMPLIANT.		
P-11	S.S. SINGLE BOWL SINK	1/2	1/2	2	1 1/2	W/ TEMPERING VALVE	EVAAT INDUSTRIES W/ CHROME BUB-TYPE FAUCET W/ 5/8"X30" TOW-UP W/ WREATOR, AND WESTLADE HANDLES, HOT/COLD WATER, STOPS, AND CHROME STRAINER -- A.D.A. COMPLIANT.		
P-12	S.S. DOUBLE BOWL SINK	1/2	1/2	2	1 1/2	W/ TEMPERING VALVE	EVAAT INDUSTRIES W/ CHROME BUB-TYPE FAUCET W/ 5/8"X30" TOW-UP W/ WREATOR, AND WESTLADE HANDLES, HOT/COLD WATER, STOPS, AND CHROME STRAINER -- A.D.A. COMPLIANT.		
P-13	GARBAGE DISPOSAL	--	--	1 1/2	--		PROVIDE 1/2 HP IE BADGER GARBAGE DISPOSAL.		
P-14	BOWLWASHER	--	--	2	--		PROVIDE DRAIN & HOT WATER CONNECTIONS FOR OWNER FURNISHED BOWWASHER. PROVIDE AN INDIRECT DRAIN TO A JOSAM 40303 8"X50 X 6" FLOOR SINK. PROVIDE BACKFLOW PREVENTER ON HW CONNECTION.		
P-15	SCRUB SINK	1/2	1/2	2	1 1/2		EVAAT INDUSTRIES W/ CHROME BUB-TYPE FAUCET W/ 5/8"X30" TOW-UP W/ WREATOR, AND WESTLADE HANDLES, HOT/COLD WATER, STOPS, AND CHROME STRAINER -- A.D.A. COMPLIANT.		
P-16	100 GALLON GAS WATER HEATER	2	2	--	--		A.O. SMITH 978 EFFICIENT MODEL BTH-55 WATER HEATER W/ FLEXIBLE VENTING, TAP RELIEF, POWER BURNER, 201 GPH @ 80°F RISE, 109,900 BTU/H INPUT, ELECTRIC IGNITION, SET WATER TEMPERATURE AT A MAXIMUM 120°F.		
P-17	HOT WATER EXPANSION TANK	3/4	--	--	--		A.O. SMITH 978 EFFICIENT MODEL BTH-55 WATER HEATER W/ FLEXIBLE VENTING, TAP RELIEF, POWER BURNER, 201 GPH @ 80°F RISE, 109,900 BTU/H INPUT, ELECTRIC IGNITION, SET WATER TEMPERATURE AT A MAXIMUM 120°F.		
P-18	HOT WATER CIRCULATION PUMP	--	3/4	--	--		A.O. SMITH 978 EFFICIENT MODEL BTH-55 WATER HEATER W/ FLEXIBLE VENTING, TAP RELIEF, POWER BURNER, 201 GPH @ 80°F RISE, 109,900 BTU/H INPUT, ELECTRIC IGNITION, SET WATER TEMPERATURE AT A MAXIMUM 120°F.		
P-19	FLUSH VALVE (3.5 G.P.F.)	1	--	--	--		A.O. SMITH 978 EFFICIENT MODEL BTH-55 WATER HEATER W/ FLEXIBLE VENTING, TAP RELIEF, POWER BURNER, 201 GPH @ 80°F RISE, 109,900 BTU/H INPUT, ELECTRIC IGNITION, SET WATER TEMPERATURE AT A MAXIMUM 120°F.		
P-20	TRENCH DRAIN W/ BENCH	--	--	4	2	W/ RECESSED SLAB	TDS MODEL NDS DURASORB PRE-SLOPED TRENCH DRAIN W/ BENCH, DS-340 CATCH BASIN (INLET/OUTLET ON BOTH ENDS), 14"X24"X4" TRENCH DRAIN W/ 2" DRAIN AND PULL-OUT FAUCET.		
P-21	FLUSHING RIM/TRAP DRAIN	1	--	4	2		TDS MODEL NDS DURASORB PRE-SLOPED TRENCH DRAIN W/ BENCH, DS-340 CATCH BASIN (INLET/OUTLET ON BOTH ENDS), 14"X24"X4" TRENCH DRAIN W/ 2" DRAIN AND PULL-OUT FAUCET.		
P-22	REFRIGERATOR ICE BOX/VALVE	1/2	--	--	--		TDS MODEL NDS DURASORB PRE-SLOPED TRENCH DRAIN W/ BENCH, DS-340 CATCH BASIN (INLET/OUTLET ON BOTH ENDS), 14"X24"X4" TRENCH DRAIN W/ 2" DRAIN AND PULL-OUT FAUCET.		
P-23	WET TABLE	3/4	3/4	3	1 1/2	W/ P-7 HAIR TRAP & TEMPERING VALVE	TDS MODEL NDS DURASORB PRE-SLOPED TRENCH DRAIN W/ BENCH, DS-340 CATCH BASIN (INLET/OUTLET ON BOTH ENDS), 14"X24"X4" TRENCH DRAIN W/ 2" DRAIN AND PULL-OUT FAUCET.		
P-24	DRY CENTRAL VACUUM SYSTEM	--	--	--	--	W/ DRY INTERCEPTOR	TDS MODEL NDS DURASORB PRE-SLOPED TRENCH DRAIN W/ BENCH, DS-340 CATCH BASIN (INLET/OUTLET ON BOTH ENDS), 14"X24"X4" TRENCH DRAIN W/ 2" DRAIN AND PULL-OUT FAUCET.		
P-25	DRY VACUUM REMOTE OUTLET	--	--	--	--		TDS MODEL NDS DURASORB PRE-SLOPED TRENCH DRAIN W/ BENCH, DS-340 CATCH BASIN (INLET/OUTLET ON BOTH ENDS), 14"X24"X4" TRENCH DRAIN W/ 2" DRAIN AND PULL-OUT FAUCET.		
P-26	WET/DRY CENTRAL VACUUM SYSTEM	3/4	--	3	1 1/2		TDS MODEL NDS DURASORB PRE-SLOPED TRENCH DRAIN W/ BENCH, DS-340 CATCH BASIN (INLET/OUTLET ON BOTH ENDS), 14"X24"X4" TRENCH DRAIN W/ 2" DRAIN AND PULL-OUT FAUCET.		
P-27	WET/DRY VACUUM REMOTE OUTLET	--	--	--	--		TDS MODEL NDS DURASORB PRE-SLOPED TRENCH DRAIN W/ BENCH, DS-340 CATCH BASIN (INLET/OUTLET ON BOTH ENDS), 14"X24"X4" TRENCH DRAIN W/ 2" DRAIN AND PULL-OUT FAUCET.		
P-28	CENTRAL WASHDOWN SYSTEM	3/4	--	--	--		TDS MODEL NDS DURASORB PRE-SLOPED TRENCH DRAIN W/ BENCH, DS-340 CATCH BASIN (INLET/OUTLET ON BOTH ENDS), 14"X24"X4" TRENCH DRAIN W/ 2" DRAIN AND PULL-OUT FAUCET.		
P-29	WALL MOUNTED SMT CONTROL UNIT	--	--	--	--		TDS MODEL NDS DURASORB PRE-SLOPED TRENCH DRAIN W/ BENCH, DS-340 CATCH BASIN (INLET/OUTLET ON BOTH ENDS), 14"X24"X4" TRENCH DRAIN W/ 2" DRAIN AND PULL-OUT FAUCET.		
P-30	PRESSURE WASHER HOSE REEL	3/8	--	--	--		TDS MODEL NDS DURASORB PRE-SLOPED TRENCH DRAIN W/ BENCH, DS-340 CATCH BASIN (INLET/OUTLET ON BOTH ENDS), 14"X24"X4" TRENCH DRAIN W/ 2" DRAIN AND PULL-OUT FAUCET.		
P-31	COMMERCIAL WASHER CONNECTIONS	1	1	6	3	SEE DRAIN TROUGH DETAIL ON DWG P-01	TDS MODEL NDS DURASORB PRE-SLOPED TRENCH DRAIN W/ BENCH, DS-340 CATCH BASIN (INLET/OUTLET ON BOTH ENDS), 14"X24"X4" TRENCH DRAIN W/ 2" DRAIN AND PULL-OUT FAUCET.		
P-32	WASHER CONNECTIONS	3/4	3/4	3	1 1/2		TDS MODEL NDS DURASORB PRE-SLOPED TRENCH DRAIN W/ BENCH, DS-340 CATCH BASIN (INLET/OUTLET ON BOTH ENDS), 14"X24"X4" TRENCH DRAIN W/ 2" DRAIN AND PULL-OUT FAUCET.		
P-33	BOWL WASHING TABLE/SINK/FAUCET	3/4	3/4	2	1 1/2		TDS MODEL NDS DURASORB PRE-SLOPED TRENCH DRAIN W/ BENCH, DS-340 CATCH BASIN (INLET/OUTLET ON BOTH ENDS), 14"X24"X4" TRENCH DRAIN W/ 2" DRAIN AND PULL-OUT FAUCET.		
P-34	CAT CARRIER DUNK SINK	1/2	1/2	2	1 1/2		TDS MODEL NDS DURASORB PRE-SLOPED TRENCH DRAIN W/ BENCH, DS-340 CATCH BASIN (INLET/OUTLET ON BOTH ENDS), 14"X24"X4" TRENCH DRAIN W/ 2" DRAIN AND PULL-OUT FAUCET.		
P-35	CAT BATHING TUB	1/2	1/2	2	1 1/2	W/ P-7 HAIR TRAP & TEMPERING VALVE	TDS MODEL NDS DURASORB PRE-SLOPED TRENCH DRAIN W/ BENCH, DS-340 CATCH BASIN (INLET/OUTLET ON BOTH ENDS), 14"X24"X4" TRENCH DRAIN W/ 2" DRAIN AND PULL-OUT FAUCET.		
P-36	OXYGEN CEILING OUTLET	--	--	--	--		TDS MODEL NDS DURASORB PRE-SLOPED TRENCH DRAIN W/ BENCH, DS-340 CATCH BASIN (INLET/OUTLET ON BOTH ENDS), 14"X24"X4" TRENCH DRAIN W/ 2" DRAIN AND PULL-OUT FAUCET.		
P-37	SCAVENGER CEILING OUTLET	--	--	--	--		TDS MODEL NDS DURASORB PRE-SLOPED TRENCH DRAIN W/ BENCH, DS-340 CATCH BASIN (INLET/OUTLET ON BOTH ENDS), 14"X24"X4" TRENCH DRAIN W/ 2" DRAIN AND PULL-OUT FAUCET.		
P-38	SUCTION CEILING OUTLET	--	--	--	--		TDS MODEL NDS DURASORB PRE-SLOPED TRENCH DRAIN W/ BENCH, DS-340 CATCH BASIN (INLET/OUTLET ON BOTH ENDS), 14"X24"X4" TRENCH DRAIN W/ 2" DRAIN AND PULL-OUT FAUCET.		
P-39	COMBINATION ANESTHESIA SCAVENGER LIQUID SUCTION MACHINE	--	--	--	--		TDS MODEL NDS DURASORB PRE-SLOPED TRENCH DRAIN W/ BENCH, DS-340 CATCH BASIN (INLET/OUTLET ON BOTH ENDS), 14"X24"X4" TRENCH DRAIN W/ 2" DRAIN AND PULL-OUT FAUCET.		
P-40	BI-LEVEL WATER COOLER	1/2	--	2	1 1/2	A.D.A. COMPLIANT	TDS MODEL NDS DURASORB PRE-SLOPED TRENCH DRAIN W/ BENCH, DS-340 CATCH BASIN (INLET/OUTLET ON BOTH ENDS), 14"X24"X4" TRENCH DRAIN W/ 2" DRAIN AND PULL-OUT FAUCET.		
P-41	OUTDOOR FLOOR DRAIN	1/2	--	3	1 1/2		TDS MODEL NDS DURASORB PRE-SLOPED TRENCH DRAIN W/ BENCH, DS-340 CATCH BASIN (INLET/OUTLET ON BOTH ENDS), 14"X24"X4" TRENCH DRAIN W/ 2" DRAIN AND PULL-OUT FAUCET.		
P-42	DECK MOUNTED EYEWASH	1/2	1/2	--	--		TDS MODEL NDS DURASORB PRE-SLOPED TRENCH DRAIN W/ BENCH, DS-340 CATCH BASIN (INLET/OUTLET ON BOTH ENDS), 14"X24"X4" TRENCH DRAIN W/ 2" DRAIN AND PULL-OUT FAUCET.		
P-43	COMBINATION ROOF/OVERFLOW DRAIN	--	--	4	--		TDS MODEL NDS DURASORB PRE-SLOPED TRENCH DRAIN W/ BENCH, DS-340 CATCH BASIN (INLET/OUTLET ON BOTH ENDS), 14"X24"X4" TRENCH DRAIN W/ 2" DRAIN AND PULL-OUT FAUCET.		
P-44	DOWNSPOUT NOZZLE	--	--	4	--		TDS MODEL NDS DURASORB PRE-SLOPED TRENCH DRAIN W/ BENCH, DS-340 CATCH BASIN (INLET/OUTLET ON BOTH ENDS), 14"X24"X4" TRENCH DRAIN W/ 2" DRAIN AND PULL-OUT FAUCET.		

NOTES:

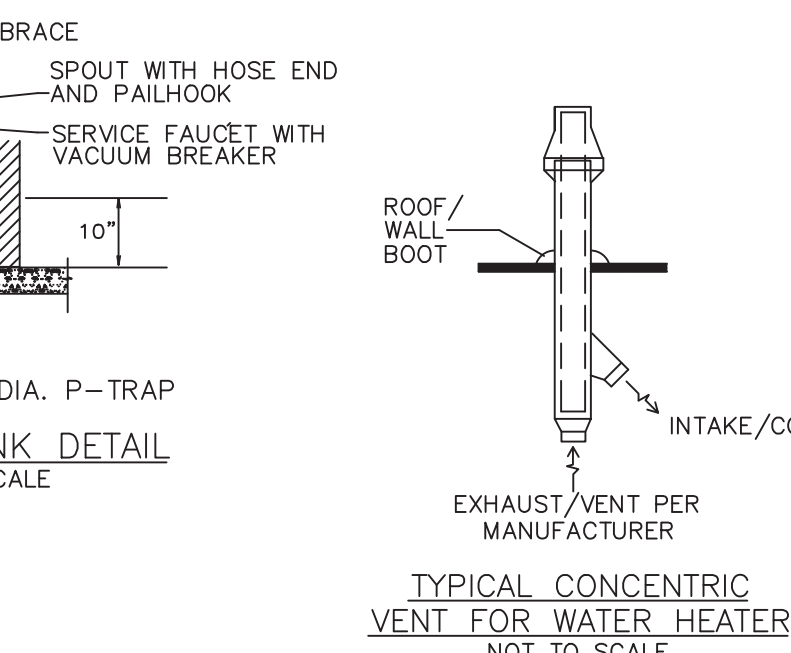
- ALL FIXTURES SHALL BE WHITE UNLESS NOTED OTHERWISE.
- ALL WORK SHALL COMPLY WITH ALL LOCAL AND STATE GOVERNING CODES AND PERMITS. CONTRACTOR SHALL OBTAIN AND PAY FOR ALL PLUMBING PERMITS AND INSTALL PER LOCAL CODE AND STATE PERMIT REQUIREMENTS.
- ALL INTERIOR HOT AND COLD WATER LINES SHALL BE INSULATED. HOT WATER LINES AND EXPOSED DRAINS SHALL BE INSULATED W/ WHITE PLASTIC JACKET INSULATION TO PREVENT TOUCH BY HANDICAP (TRUBRO LAV GUARD OR EQUAL). ALL ABOVE GRADE SANITARY AND STORM DRAINAGE LINES SHALL BE CAST IRON. ALL HORIZONTAL STORM DRAINAGE LINES SHALL BE INSULATED.
- CONTRACTOR SHALL PROVIDE ALL NECESSARY FITTINGS, FIXTURES, & VALVES TO MAKE A COMPLETE AND OPERATING SYSTEM. ALL PIPING SHALL BE RUN INSIDE WALLS OR ABOVE CEILING UNLESS SHOWN OTHERWISE. ALL EXPOSED PIPING SHALL BE CHROME PLATED. ALL PIPE PENETRATIONS OF FIRE RATED CEILINGS AND WALLS SHALL HAVE FIRE RATED SEALANT/CAULKING PER MANUFACTURER AND CODE.
- CONTRACTOR SHALL COORDINATE CONNECTION OF WATER, NATURAL GAS, AND SEWER SYSTEMS W/ SITE CONTRACTOR AND LOCAL UTILITY COMPANIES.
- CONTRACTOR SHALL PROVIDE ALL MOUNTING HARDWARE AND ACCESSORIES TO INSTALL ALL FIXTURES. INSTALL HANDICAP FIXTURES IN COMPLIANCE W/ ADA AND LOCAL CODES.
- PLUMBER/INSTALLER SHALL ENSURE THAT PIPES ARE ADEQUATELY INSULATED TO PREVENT FREEZING. PLUMBER SHALL USE FIBERGLASS INSULATION W/ VAPOR BARRIER (OWENS CORNING OR EQUAL). COLD WATER LINES SHALL HAVE MINIMUM 1/2" THICK INSULATION AND HOT WATER AND HOT WATER RETURN LINES SHALL HAVE MINIMUM 1" THICK INSULATION.
- PLUMBING CONTRACTOR SHALL FIELD COORDINATE FINAL LOCATION OF WATER, SANITARY SEWER, GAS, AND VENT, PIPING W/ G.C., STRUCTURAL, MECHANICAL, AND ELECTRICAL CONTRACTORS AND ADJUST FINAL LOCATIONS BASED ON FINAL FIELD CONDITIONS TO AVOID INTERFERENCES.
- PROVIDE AND INSTALL MEDIUM (2 PSI) PRESSURE GAS ALL NEW GAS FIRED EQUIPMENT. PROVIDE SHUTOFF VALVES, MEDIUM PRESSURE (2 PSI) REGULATORS, AND DRIP LEGS (ON UNITS IN CONDITIONED SPACE ONLY).
- PERFORM A WATER ANALYSIS. IF HARDNESS EXCEEDS 7 GRAINS PER GALLON, PROPOSE A WATER SOFTENING SYSTEM TO PROVIDE WATER W/ HARDNESS LESS THAN 7 GRAINS PER GALLON BASED ON THE WATER ANALYSIS RESULTS AND 62 GPM PEAK FLOW.
- MEDICAL GAS SYSTEM DESIGN (INCLUDING EQUIPMENT AND PIPE SIZING) TO BE CONFIRMED AND ADJUSTED AS REQUIRED BY MEDICAL GAS SUPPLIER/INSTALLER.

FIRE PROTECTION SCOPE OF WORK:

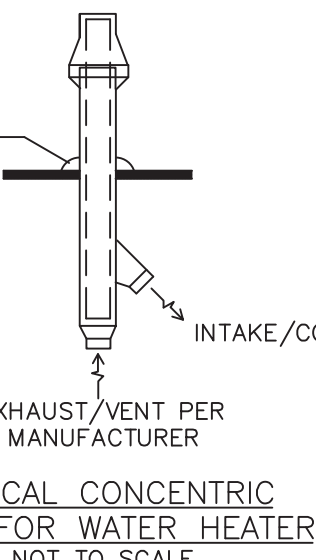
OBTAIN THE SERVICES OF A STATE QUALIFIED AND LICENSED SPRINKLER CONTRACTOR TO DESIGN, OBTAIN NECESSARY STATE AND LOCAL APPROVALS OF DESIGN, AND REVISIONS OF THE EXISTING FIRE PROTECTION SPRINKLER SYSTEM PER LOCAL AND NFPA 13 CODE. FIRE PROTECTION CONTRACTOR SHALL SUBMIT 3 COPIES OF THE DESIGN CALCULATIONS, FLOW TESTS, ETC. FOR ARCHITECT/ENGINEER APPROVAL AND SUBMIT REQUIRED COPIES TO LOCAL FIRE AUTHORITIES FOR APPROVAL PRIOR TO INSTALLATION OF SYSTEM. FIRE PROTECTION CONTRACTOR SHALL COORDINATE WITH GENERAL CONTRACTOR, MECHANICAL, PLUMBING AND ELECTRICAL CONTRACTORS TO ADJUST FOR INTERFERENCES AND ADJUST SPRINKLER DESIGN AND LAYOUT ACCORDINGLY. FIRE PROTECTION CONTRACTOR SHALL FIELD TEST THE SPRINKLER SYSTEM PER STATE AND LOCAL CODE AND NFPA 13 STANDARD.



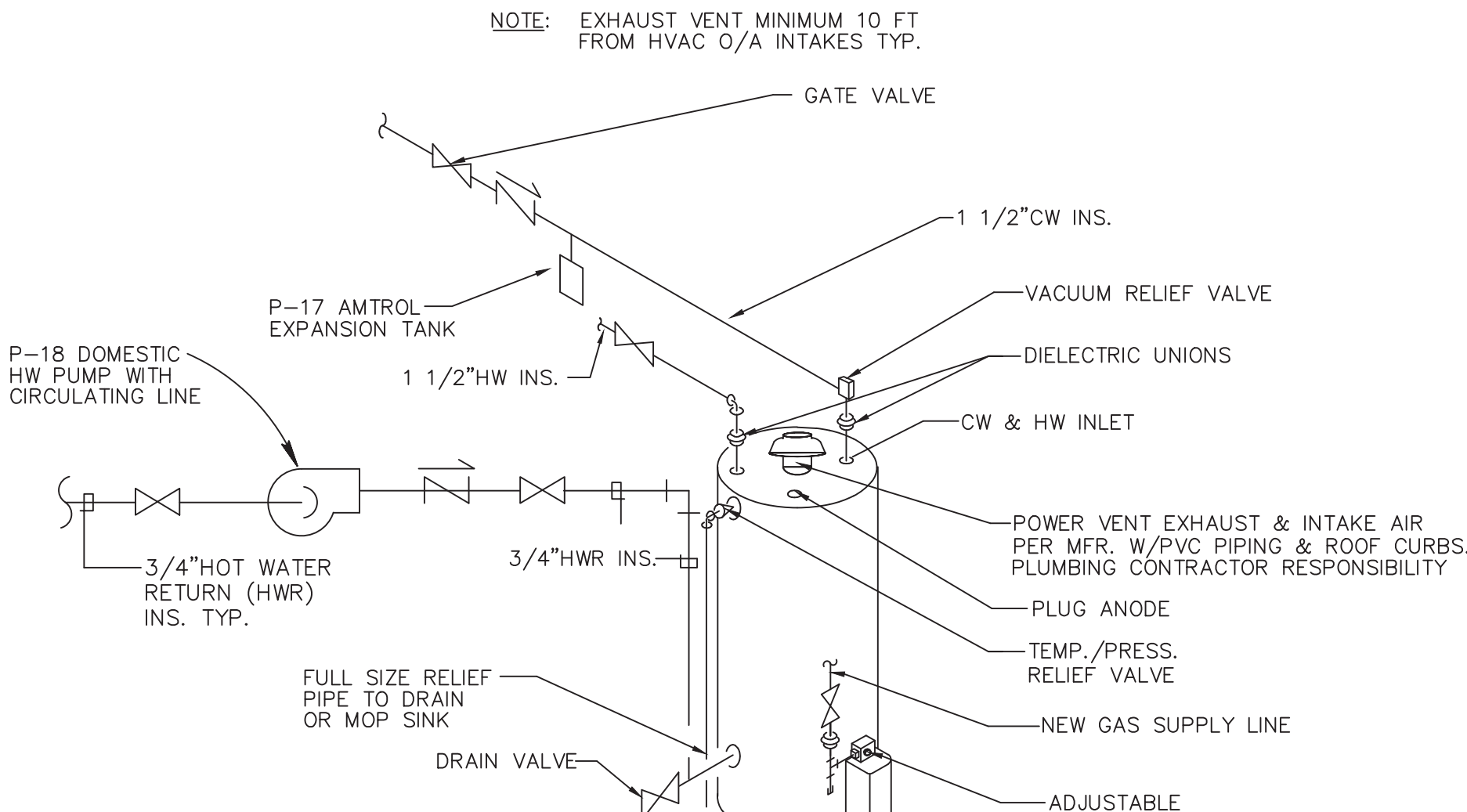
P-19 & P-20 TRENCH DRAIN WATER CONNECTION DETAIL
NOT TO SCALE



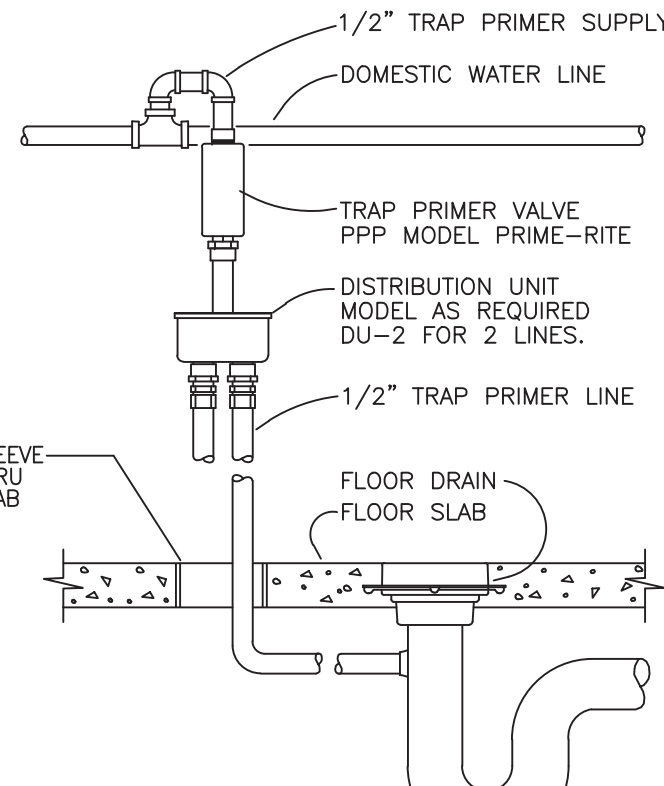
P-3 MOP SINK DETAIL
NOT TO SCALE



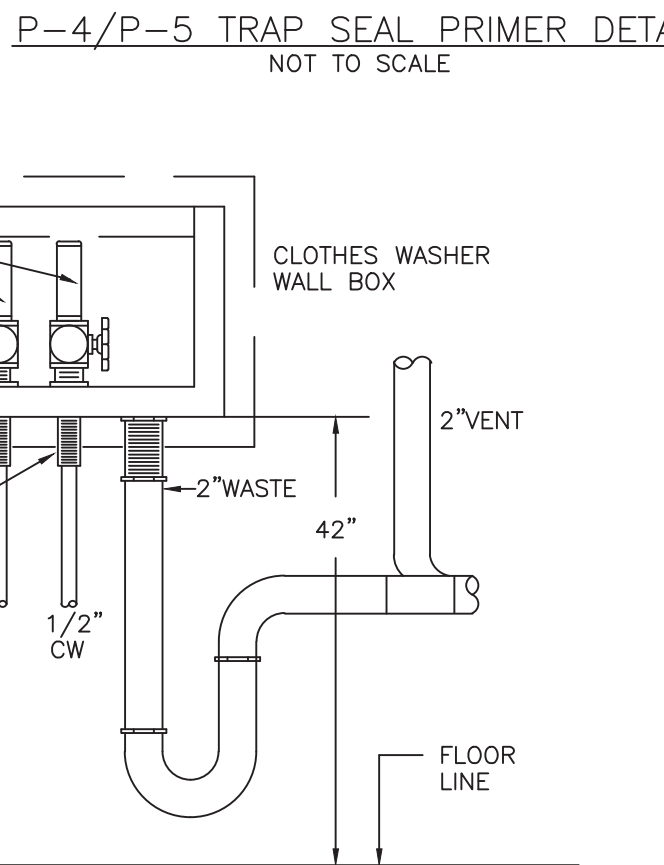
TYPICAL CONCENTRIC VENT FOR WATER HEATER
NOT TO SCALE



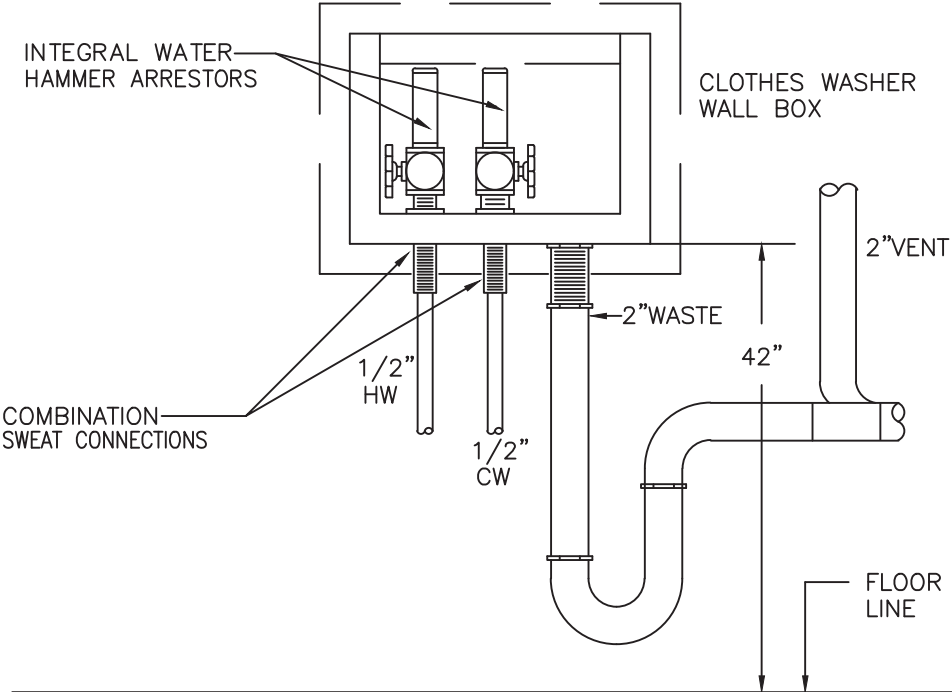
P-16 HOT WATER HEATER PIPING DETAIL
NOT TO SCALE



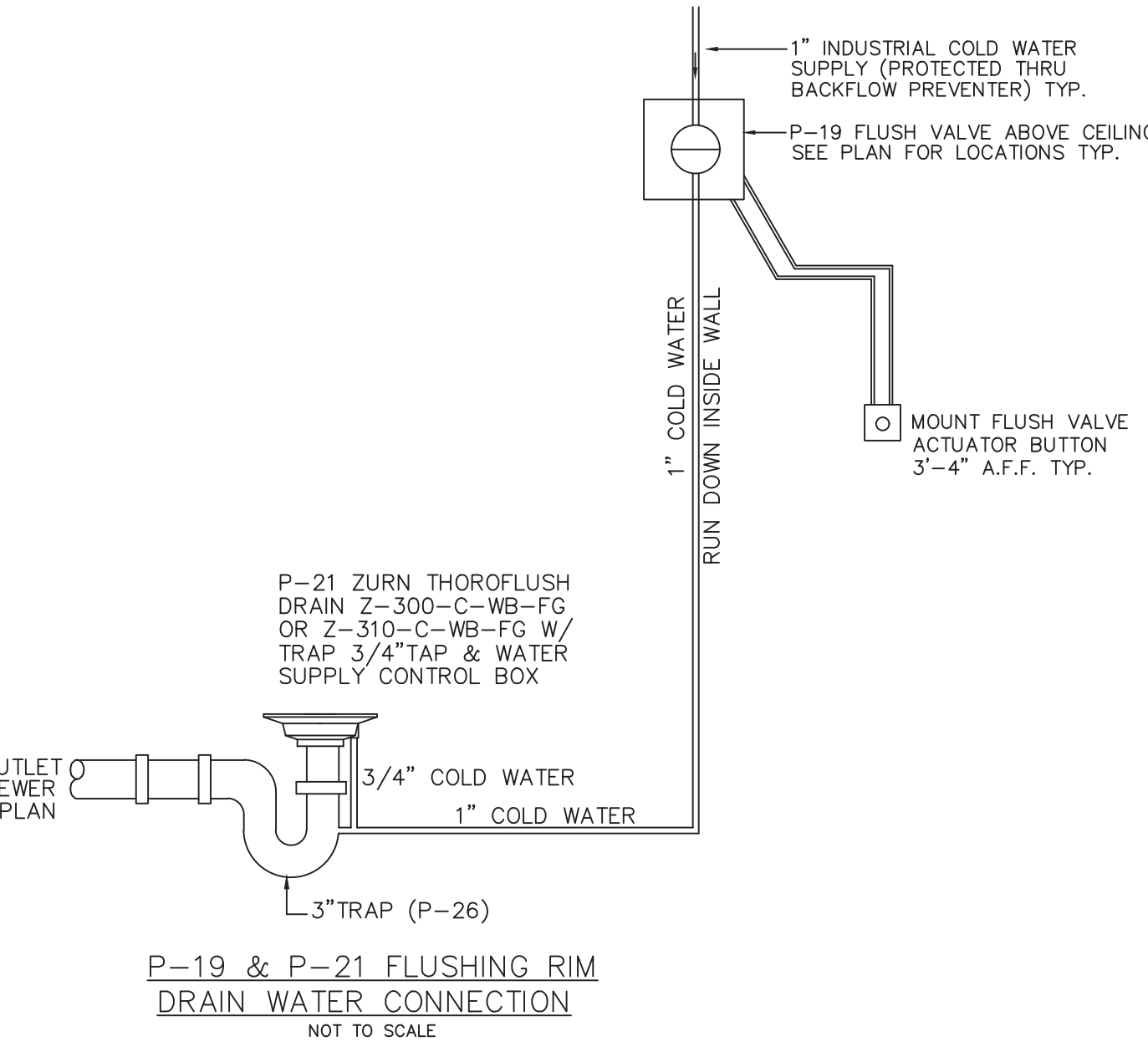
P-8 HYDROSURGE MIXING VALVE DIAGRAM
NOT TO SCALE



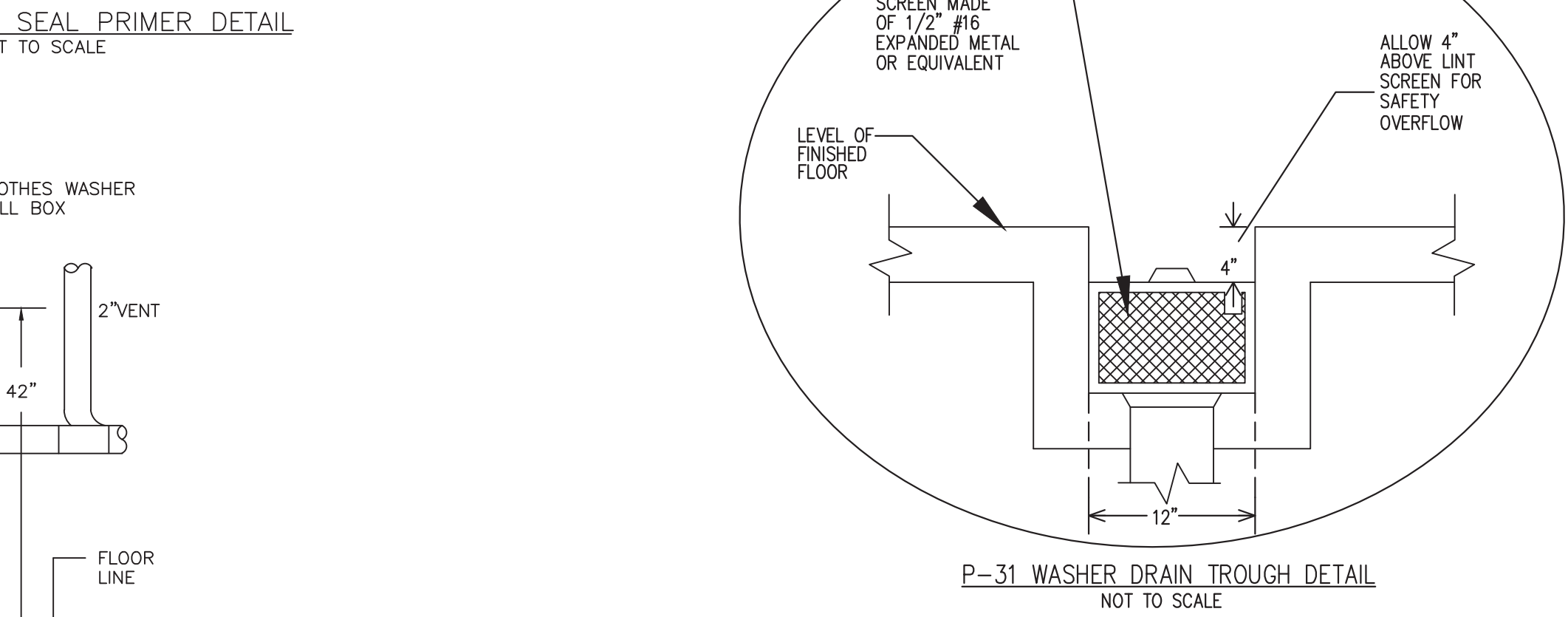
P-4/P-5 TRAP SEAL PRIMER DETAIL
NOT TO SCALE



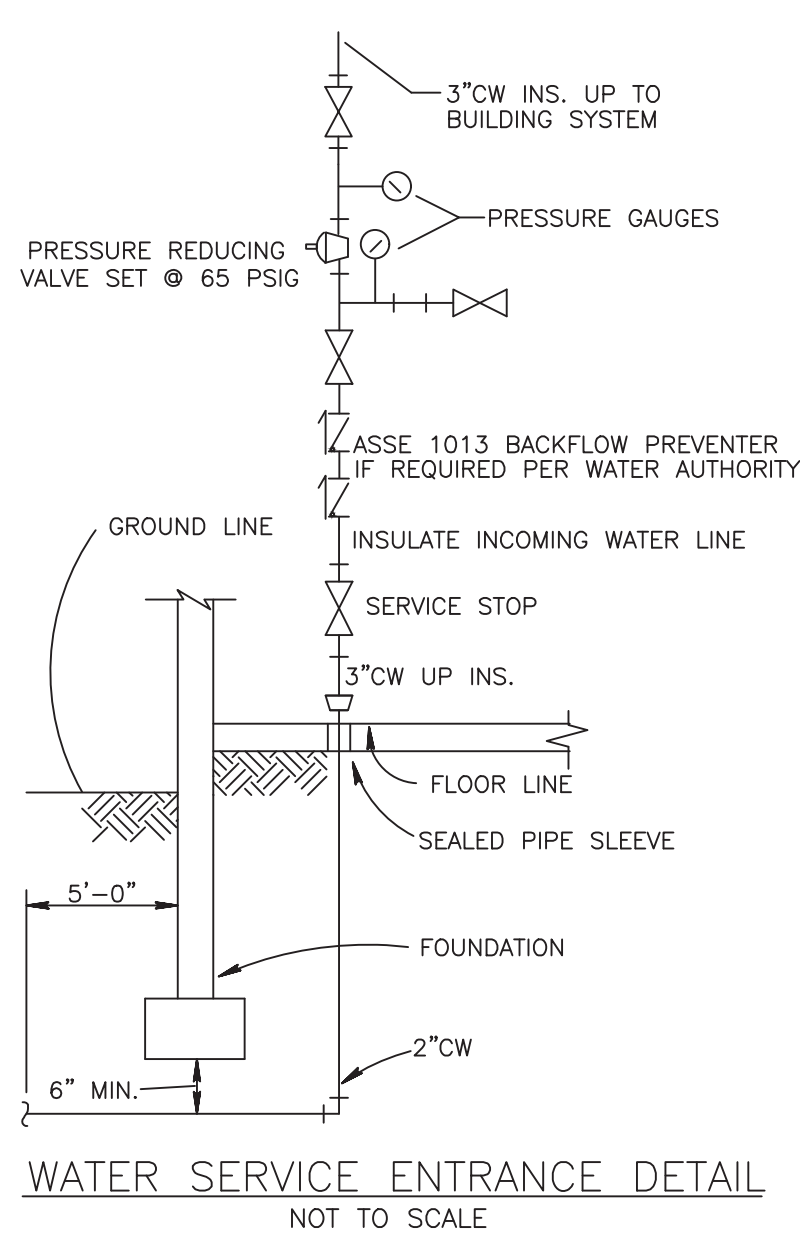
P-32 UTILITY WALL BOX FOR CLOTHES WASHER
NOT TO SCALE



P-19 & P-21 FLUSHING RIM DRAIN WATER CONNECTION
NOT TO SCALE



P-31 WASHER DRAIN TROUGH DETAIL
NOT TO SCALE



WATER SERVICE ENTRANCE DETAIL
NOT TO SCALE

PLUMBING LEGEND	
W	SANITARY SEWER (W) UNDERGROUND
W	SANITARY SEWER (W) ABOVE GRADE
V	VENT (V)
CW	COLD WATER (CW) INSULATED 1" THICK W/ VAPOR BARRIER
CW	COLD WATER (CW) UNDERGROUND OR UNDERFLOOR
HW	HOT WATER (HW) INSULATED 1" THICK W/ VAPOR BARRIER
HWR	HOT WATER RETURN (HWR) INSULATED 1" THICK W/ VAPOR BARRIER
GAS	NATURAL GAS SCH 40 STEEL PIPING W/ LABEL PER CODE
P-#	FIXTURE NUMBER -- SEE PLUMBING SCHEDULE
C.O.	CLEAN OUT
F.C.O.	FLOOR CLEAN-OUT W/ BRASS COVER
W.C.O.	WALL CLEAN-OUT W/ CHROME COVER
V.T.R.	VENT THRU ROOF
U/O	UNDERGROUND INSTALLATION
U/F	UNDERFLOOR INSTALLATION
F.D.	FLOOR DRAIN W/ TRAP PRIMER VALVE & CONNECTION AS SPECIFIED
F.P.H.B.	FREEZE PROOF HOSE BIBB W/ INTEGRAL VACUUM BREAKER
	PIPE UP -- INSULATED 1" THICK W/ VAPOR BARRIER
	PIPE DOWN -- INSULATED 1" THICK W/ VAPOR BARRIER
	SANITARY RISER REFERENCE NUMBER
	WATER HAMMER ARRESTOR (SHOCK ABSORBER) JOSAM MFR MODEL 75000 SERIES OR EQUAL

HANDICAP ACCESSIBILITY NOTES:

WATER CLOSETS:	17"-19" A.F.F. TO RIM 18" FROM SIDEWALL TO CENTER (IN PLAN)
LAVATORIES:	34" MAX. AFF. TO TOP OF RIM 29" MIN. CLEAR AFF. @ APRON 17" MIN. PROJECTION 30" CLEAR CENTERED (IN PLAN)

DATE
11/11/21

REVISION
DESCRIPTION
ADDENDUM #1

NO.
1

ARCHITECTS
SEAL:

West Coast Office
2700 E. 10th Ave., Suite 100
Boulder, CO 80501
T: 817.338.0050
F: 817.422.2527
East Coast Office
1000 N. 10th St., Suite 100
Boulder, CO 80501
T: 817.338.0050
F: 817.422.2527

CAPITAL PROJECT 1483
CONSTRUCTION OF A NEW ANIMAL SHELTER FACILITY
65 FIREMENS MEMORIAL DRIVE, POMONA, NY 10970

PLUMBING SCHEDULES
AND DETAILS

PROGRESS SET ☐ BID SET ☐ PERMIT SET ☐ CONSTRUCTION SET ☐

DRAWN BY: CRS
CHECKED BY: J.C.
SCALE: AS NOTED
DATE: 20 OCT. 2021
PROJECT NO: 2019

rautaus freedrenfeld & associates

CDi

620 Pennsylvania Ave
Winchester, VA 22601
Phone 540-665-2846
Fax 540-667-3284

Comfort Design Inc.
Mechanical & Electrical
Engineers
Job # E2119

P0.01