

EROSION & SEDIMENT CONTROL NOTES:

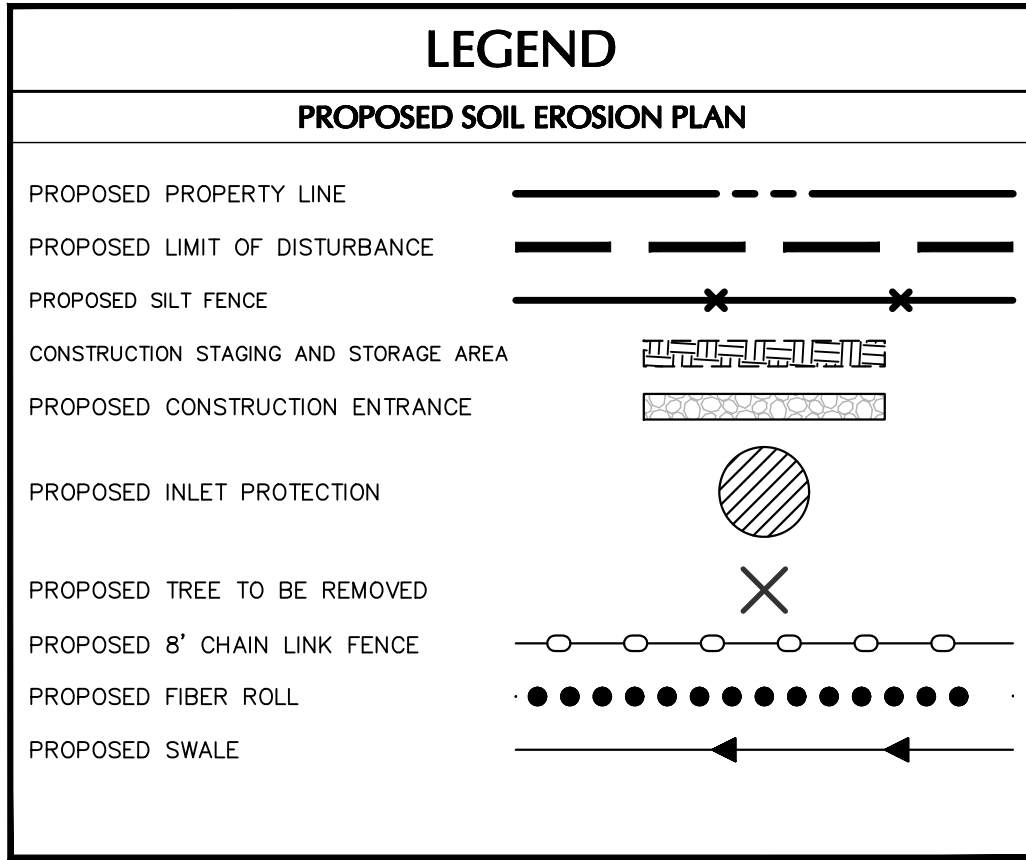
- REFER TO THE NEW YORK STATE DEPARTMENT OF ENVIRONMENTAL CONSERVATION (NYSDEC) SPECIES GENERAL PERMIT IN APPENDIX A OF THE STORMWATER POLLUTION PREVENTION PLAN FOR ADDITIONAL REQUIREMENTS.
- ALL EROSION AND SEDIMENT CONTROL MEASURES ARE TO BE INSTALLED IN ACCORDANCE WITH "NEW YORK STATE STANDARDS AND SPECIFICATIONS FOR EROSION AND SEDIMENT CONTROL" LATEST EDITION.
- BEFORE BEGINNING CONSTRUCTION, THE OWNER MUST SET UP A PRE-CONSTRUCTION MEETING WITH THE QUALIFIED PROFESSIONAL, QUALIFIED INSPECTOR, CONTRACTORS, AND SUBCONTRACTORS TO DISCUSS THE RESPONSIBILITIES RELATED TO THE STORMWATER POLLUTION PREVENTION PLAN IMPLEMENTATION.
- THE CONTRACTOR AND SUBCONTRACTOR MUST IDENTIFY THE TRAINED INDIVIDUAL THAT WILL BE RESPONSIBLE FOR THE IMPLEMENTATION AND MAINTENANCE OF THE EROSION AND SEDIMENT CONTROL MEASURES DURING CONSTRUCTION.
- BEFORE BEGINNING CONSTRUCTION, ALL EROSION AND SEDIMENT CONTROLS MUST BE INSTALLED IN ACCORDANCE WITH THE PLANS. SITE PREPARATION ACTIVITIES MUST BE PLANNED TO MINIMIZE THE SCOPE AND DURATION OF SOIL DISTURBANCE. EXISTING VEGETATION TO REMAIN MUST BE PROTECTED TO ENSURE OVER CLEARING DOES NOT OCCUR.
- PERMANENT TRAFFIC CORRIDORS MUST BE ESTABLISHED AND "ROUTES OF CONVENIENCE" MUST BE AVOIDED. STABILIZED CONSTRUCTION ENTRANCES MUST BE INSTALLED AT THE LOCATIONS SHOWN ON THE PROJECT PLANS.
- STOCKPILED TOPSOIL MUST BE ENCLOSED WITH SILT FENCE OR HAY BALES AND COVERED OR TEMPORARILY SEEDED. ALL GRASS SEED MUST CONTAIN AT LEAST 25% RAPID GERMINATING PERENNIAL RYE GRASS.
- DAMAGE TO SURFACE WATERS RESULTING FROM EROSION AND SEDIMENTATION MUST BE MINIMIZED BY STABILIZING DISTURBED AREAS AND BY REMOVING SEDIMENT FROM CONSTRUCTION SITE DISCHARGES.
- DUST MUST BE CONTROLLED BY SPRINKLING EXPOSED SOIL AREAS PERIODICALLY WITH WATER AS REQUIRED.
- EROSIVE MATERIAL TEMPORARILY STOCKPILED ON SITE DURING CONSTRUCTION MUST BE LOCATED IN AN AREA AWAY FROM STORM DRAINAGE AND MUST BE PROPERLY PROTECTED BY A SILT FENCE BARRIER.
- EARTHWORK ACTIVITIES MUST BE CONSISTENT WITH THE PHASING PLANS. THE EARTHWORK OPERATION AREAS MUST BE STABILIZED ON AN ONGOING BASIS WITH NO AREAS THAT ARE NOT CURRENTLY UNDER CONSTRUCTION LEFT WITHOUT AT LEAST TEMPORARY COVER FOR MORE THAN 14 DAYS.
- EROSION AND SEDIMENT CONTROL INSPECTIONS:
 - THE TRAINED INDIVIDUAL MUST INSPECT ALL EROSION AND SEDIMENT CONTROL MEASURES ON A DAILY BASIS TO ENSURE PROPER PERFORMANCE. ANY SEDIMENT BUILD-UP MUST BE CLEANED AND REMOVED. ALL DAMAGES TO EROSION AND SEDIMENT CONTROLS MUST BE REPAIRED AT THE END OF THE WORK DAY.
 - THE QUALIFIED INSPECTOR MUST CONDUCT SITE INSPECTIONS EVERY 7 DAYS. ANY DEFICIENCIES NOTED IN THE REPORTS MUST BE CORRECTED IMMEDIATELY BY THE CONTRACTOR.
 - IF SOIL DISTURBANCE ACTIVITIES ARE SUSPENDED FOR WINTER SHUTDOWN, TEMPORARY STABILIZATION MEASURES WILL BE APPLIED TO ALL DISTURBED AREAS. IF APPROVED BY THE NYSDEC OR M54 MUNICIPALITY, THE FREQUENCY OF INSPECTIONS BY THE QUALIFIED INSPECTOR MAY BE REDUCED TO ONE INSPECTION EVERY 30 DAYS.
 - IF AUTHORIZED BY THE NYSDEC OR M54 MUNICIPALITY TO DISTURB MORE THAN 5 ACRES AT ONE TIME, THE QUALIFIED INSPECTOR MUST CONDUCT AT LEAST 2 SITE INSPECTIONS, SEPARATED BY 2 DAYS, EVERY 7 DAYS UNTIL SUCH TIME THAT LESS THAN 5 ACRES OF SOIL REMAIN EXPOSED.
- TEMPORARY EROSION AND SEDIMENT CONTROL MEASURES MUST BE REMOVED WHEN ALL DISTURBED AREAS HAVE UNDERGONE FINAL STABILIZATION, WHEN UPGRADE SURFACES ARE PROPERLY STABILIZED AND ALL STORMWATER MANAGEMENT SYSTEMS ARE IN PLACE AND OPERATIONAL. ALL AREAS DISTURBED BY THE REMOVAL OF THE TEMPORARY EROSION AND SEDIMENT CONTROL MEASURES MUST BE FILLED IN, TOPSOILED, SEEDED, AND MULCHED. FINAL STABILIZATION IS ACHIEVED WHEN ALL SOIL DISTURBING ACTIVITIES ARE COMPLETED AND A UNIFORM PERENNIAL VEGETATIVE COVER WITH A DENSITY OF 80% IS ESTABLISHED, OR EQUIVALENT STABILIZATION MEASURES, SUCH AS PLACEMENT OF MULCH OR GEOTEXTILE, IS COMPLETED ON ALL AREAS NOT PAVED OR COVERED BY PERMANENT STRUCTURES.

POLLUTION PREVENTION CONTROL:

GOOD HOUSEKEEPING PRACTICES ARE DESIGNED TO MAINTAIN A CLEAN AND ORDERLY WORK ENVIRONMENT. GOOD HOUSEKEEPING MEASURES MUST BE MAINTAINED THROUGHOUT THE CONSTRUCTION PROCESS BY THOSE PARTIES INVOLVED WITH THE DIRECT CARE AND DEVELOPMENT OF THE SITE. THE FOLLOWING MEASURES SHOULD BE IMPLEMENTED TO CONTROL THE POSSIBLE EXPOSURE OF HARMFUL SUBSTANCES AND MATERIALS TO STORMWATER RUNOFF:

MATERIAL RESULTING FROM THE CLEARING AND GRUBBING OPERATION MUST BE STOCKPILED AWAY FROM STORM DRAINAGE, WATER BODIES AND/OR WATERCOURSES AND SURROUNDED WITH ADEQUATE EROSION AND SEDIMENT CONTROL MEASURES. SOIL STOCKPILE LOCATIONS MUST BE EXPOSED NO LONGER THAN 14 DAYS BEFORE SEEDING.

- EQUIPMENT MAINTENANCE AREAS MUST BE PROTECTED FROM STORMWATER FLOWS AND MUST BE SUPPLIED WITH APPROPRIATE WASTE RECEPTACLES FOR SPENT CHEMICALS, SOLVENTS, OILS, GREASES, GASOLINE, AND ANY POLLUTANTS THAT MIGHT CONTAMINATE THE SURROUNDING HABITAT AND/OR WATER SUPPLY. EQUIPMENT WASH-DOWN ZONES MUST BE LOCATED WITHIN AREAS DRAINING TO SEDIMENT CONTROL DEVICES.
- THE USE OF DETERGENTS FOR LARGE-SCALE (I.E., VEHICLES, BUILDINGS, PAVEMENT SURFACES, ETC.) WASHING IS PROHIBITED.
- MATERIAL STORAGE LOCATIONS AND FACILITIES (I.E., COVERED STORAGE AREAS, STORAGE SHEDS, ETC.) MUST BE LOCATED ON-SITE AND MUST BE STORED ACCORDING TO THE MANUFACTURER'S STANDARDS IN A DEDICATED STAGING AREA. CHEMICALS, PAINTS, SOLVENTS, FERTILIZERS, AND OTHER TOXIC MATERIAL MUST BE STORED IN WATERPROOF CONTAINERS. RUNOFF CONTAINING SUCH MATERIALS MUST BE COLLECTED, REMOVED FROM THE SITE, TREATED AND DISPOSED AT AN APPROVED SOLID WASTE OR CHEMICAL DISPOSAL FACILITY.
- HAZARDOUS SPILLS MUST BE IMMEDIATELY CONTAINED TO PREVENT SUCH POLLUTANTS FROM ENTERING THE SURROUNDING HABITAT AND/OR WATER SUPPLY. SPILL KITS MUST BE PROVIDED ON-SITE AND MUST BE DISPLAYED IN A PROMINENT LOCATION FOR EASE OF ACCESS AND USE. SPILLS GREATER THAN FIVE (5) GALLONS MUST BE REPORTED TO THE NYSDEC RESPONSE UNIT AT 1-800-457-7362. IN ADDITION, A RECORD OF THE INCIDENT(S) AND/OR NOTIFICATIONS MUST BE DOCUMENTED AND ATTACHED TO THE SWPPP.
- PORTABLE SANITARY WASTE FACILITIES MUST BE PROVIDED ON-SITE FOR WORKERS AND MUST BE PROPERLY MAINTAINED.
- DUMPSTERS AND/OR DEBRIS CONTAINERS MUST BE LOCATED ON-SITE AND MUST BE OF ADEQUATE SIZE TO MANAGE RESPECTIVE MATERIALS. REGULAR COLLECTION AND DISPOSAL OF WASTES MUST OCCUR AS REQUIRED.
- TEMPORARY CONCRETE WASHOUT FACILITIES SHOULD BE LOCATED A MINIMUM OF 50 FEET FROM STORM DRAIN INLETS, OPEN DRAINAGE FACILITIES, AND WATERCOURSES. EACH FACILITY SHOULD BE LOCATED AWAY FROM CONSTRUCTION TRAFFIC OR ACCESS AREAS TO PREVENT DISTURBANCE OR TRACKING. A SIGN SHOULD BE INSTALLED ADJACENT TO EACH WASHOUT FACILITY TO INFORM CONCRETE EQUIPMENT OPERATORS TO UTILIZE THE PROPER FACILITIES. WHEN TEMPORARY CONCRETE WASHOUT FACILITIES ARE NO LONGER REQUIRED FOR THE WORK, THE HARDENED CONCRETE MUST BE REMOVED AND DISPOSED OF. MATERIALS USED TO CONSTRUCT TEMPORARY CONCRETE WASHOUT FACILITIES MUST BE REMOVED AND DISPOSED OF. HOLES, DEPRESSIONS OR OTHER GROUND DISTURBANCE CAUSED BY THE REMOVAL OF THE TEMPORARY CONCRETE WASHOUT FACILITIES MUST BE BACKFILLED AND/OR REPAIRED, SEEDED, AND MULCHED FOR FINAL STABILIZATION.
- NON-STORMWATER COMPONENTS OF SITE DISCHARGE MUST BE CLEAN WATER. WATER USED FOR CONSTRUCTION, WHICH DISCHARGES FROM THE SITE, MUST ORIGINATE FROM A PUBLIC WATER SUPPLY OR PRIVATE WELL APPROVED BY THE HEALTH DEPARTMENT. WATER USED FOR CONSTRUCTION THAT DOES NOT ORIGINATE FROM AN APPROVED POND SUPPLY MUST NOT DISCHARGE FROM THE SITE. IT CAN BE RETAINED IN THE POND UNTIL IT INFILTRATES AND EVAPORATES.



16" M

20" M

6" M

454

455

14" M

456

457

458

459

24" M

460

461

462

463

464

465

466

467

468

469

470

471

472

473

474

475

476

477

478

479

480

481

482

483

484

485

486

487

488

489

490

491

492

493

494

495

496

497

498

499

500

501

502

503

504

505

506

507

508

509

510

511

512

513

514

515

516

517

518

519

520

521

522

523

524

525

526

527

528

529

530

531

532

533

534

535

536

537

538

539

540

541

542

543

544

545

546

547

548

549

550

551

552

553

554

555

556

557

558

559

560

561

562

563

564

565

566

567

568

569

570

571

572

573

574

575

576

577

578

579

580

581

582

583

584

585

586

587

588

589

590

591

592

593

594

595

596

597

598

599

600

601

602

603

604

605

606

607

608

609

610

611

612

613

614

615

616

617

618

619

620

621

622

623

624

625

626

627

628

629

630

631

632

633

634

635

636

637

638

639

640

641

642

643

644

645

646

647

648

649

650

651

652

653

654

655

656

657

658

659

660

661

662

663

664

665

666

667

668

669

670

671

672

673

674

675

676

677

678

679

680

681

682

683

684

685

686

687

688

689

690

691

692

693

694

695

696

697

698

699

700

701

702

703

704

705

706

707

708

709

710

711

712

713

714

715

716

717

718

719

720

721

722

723

724

725

726

727

728

729

730

731

732

733

734

735

736

737

738

739

740

741

742

743

744

745

746

747

748

749

750

751

752

753

754

755

756

757

758

759

760

761

762

763

764

765

766

767

768

769

770

771

772

773

774

775

776

777

778

779

780

781

782

783

784

785

786

787

788

789

790

791

792

793

794

795

796

797

798

799

800

801

802

803

804

805

806

807

808

809

810

811

812

813

814

815

816

817

818

819

820

821

822

823

824

825

826

827

828

829

830

831

832

833

834

835

836

837

838

839

840

841

842

843

844

845

846

847

848

849

850

851

852

853

854

855

856

857

858

859

860

861

862

863

864

865

866

867

868

869

870

871

872

873

874

875

876

877

878

879

880

881

882

883

884

885

886

887

888

889

890

891

892

893

894

895

896

897

898

899

900

901

902

903

904

905

906

907

908

909

910

911

912

913

914

915

916

917

918

919

920

921

922

923

924

925

926

927

928

929

930

931

932

933

934

935

936

937

938

939

940

941

942

943

944

945

946

947

948

949

950

951

952

953

954

955

956

957

958

959

960

961

962

963

964

965

966

967

968

969

970

971

972

973

974

975

976

977

978

979

980

981

982

983

984

985

986

987

988

989

990

991

992

993

994

995

996

997

998

999

1000

1001

1002

1003

1004

1005

1006

1007

1008

1009

1010

1011

1012

1013

1014

1015

1016

1017

1018

1019

1020

1021

1022

1023

1024

1025

1026

1027

1028

1029

1030

1031

1032

1033

1034

1035

1036

1037

1038

1039

1040

1041

1042

1043

1044

1045

1046

1047

1048

1049

1050

1051

1052

1053

1054

1055

1056

1057

1058

1059

1060

1061

1062

1063

1064

1065

1066

1067

1068

1069

1070

1071

1072

1073

1074

1075

1076

1077

1078

1079

1080

1081

1082

1083

1084

1085

1086

1087

1088

1089

1090

1091

1092

1093

1094

1095

1096

1097

1098

1099

1100

1101

1102

1103

1104

1105

1106

1107

1108

1109

1110

1111

1112

1113

1114

1115

1116

1117

1118

1119

1120

1121

1122

1123

1124

1125

1126

1127

1128

1129

1130

1131

1132

1133

1134

1135

1136

1137

1138

1139

1140

1141

1142

1143

1144

1145

1146

1147

1148

1149

1150

1151

1152

1153

1154

1155

1156

1157

1158

1159

1160

1161

1162

1163

1164

1165

1166

1167

1168

1169

1170

1171

1172

1173

1174

1175

1176

1177

1178

1179

1180

1181

1182

1183

1184

1185

1186

1187

1188

1189

1190

1191

1192

1193

1194

1195

1196

1197

1198

1199

1200

1201

1202

1203

1204

1205

1206

1207

1208

1209

1210

1211

1212

1213

1214

1215

1216

1217

1218

1219

1220

1221

1222

1223

1224

1225

1226

1227

1228

1229

1230

1231

1232

1233

1234

1235

1236

1237

1238

1239

1240

1241

1242

1243

1244

1245

1246

1247

1248

1249

1250

1251

1252

1253

1254

1255

1256

1257

1258

1259

1260

1261

1262

1263

1264

1265

1266

1267

1268

1269

1270

1271

1272

1273

1274

1275

1276

1277

1278

1279

1280

1281

1282

1283

1284

1285

1286

1287

1288

1289

1290

1291

1292

1293

1294

1295

1296

1297

1298

1299

1300

1301

1302

1303

1304

1305

1306

1307

1308

1309

1310

1311

1312

1313

1314

1315

1316

1317

1318

1319

1320

1321

1322

1323

1324

1325

1326

1327

1328

1329

1330

1331

1332

1333

1334

1335

1336

1337

1338

1339

1340

1341

1342

1343

1344

1345

1346

1347

1348

1349

1350

1351

1352

1353

1354

1355

1356

1357

1358

1359

1360

1361

1362

1363

1364

1365

1366

1367

1368

1369

1370

1371

1372

1373

1374

1375

1376

1377

1378

1379

1380

1381

1382

1383

1384

1385

1386

1387

1388

1389

1390

1391

1392

1393

1394

1395

1396

1397

1398

1399

1400

1401

1402

1403

1404

1405

1406

1407

1408

1409

1410

1411

1412

1413

1414

1415

1416

1417

1418

1419

1420

1421

1422

1423

1424

1425

1426

1427

1428

1429

1430

1431

1432

1433

1434

1435

1436

1437

1438

1439

1440

1441

1442

1443

1444

1445

1446

1447

1448

1449

1450

1451

1452

1453

1454

1455

1456

1457

1458

1459

1460

1461

1462

1463

1464

1465

1466

1467

1468

1469

1470

1471

1472

1473

1474

1475

1476

1477

1478

1479

1480

1481

1482

1483

1484

1485

1486

1487

1488

1489

1490

1491

1492

1493

1494

1495

1496

1497

1498

1499

1500

1501

1502

1503

1504

1505

1506

1507

1508

1509

1510

1511

1512

1513

1514

1515

1516

1517

1518

1519

1520

1521

1522

1523

1524

1525

1526

1527

1528

1529

1530

1531

1532

1533

1534

1535

1536

1537

1538

1539

1540

1541

1542

1543

1544

1545

1546

1547

1548

1549

1550

1551

1552

1553

1554

1555

1556

1557

1558

1559

1560

1561

1562

1563

1564

1565

1566

1567

1568

1569

1570

1571

1572

1573

1574

1575

1576

1577

1578

1579

1580

1581

1582

1583

1584

1585

1586

1587

1588

1589

1590



1591

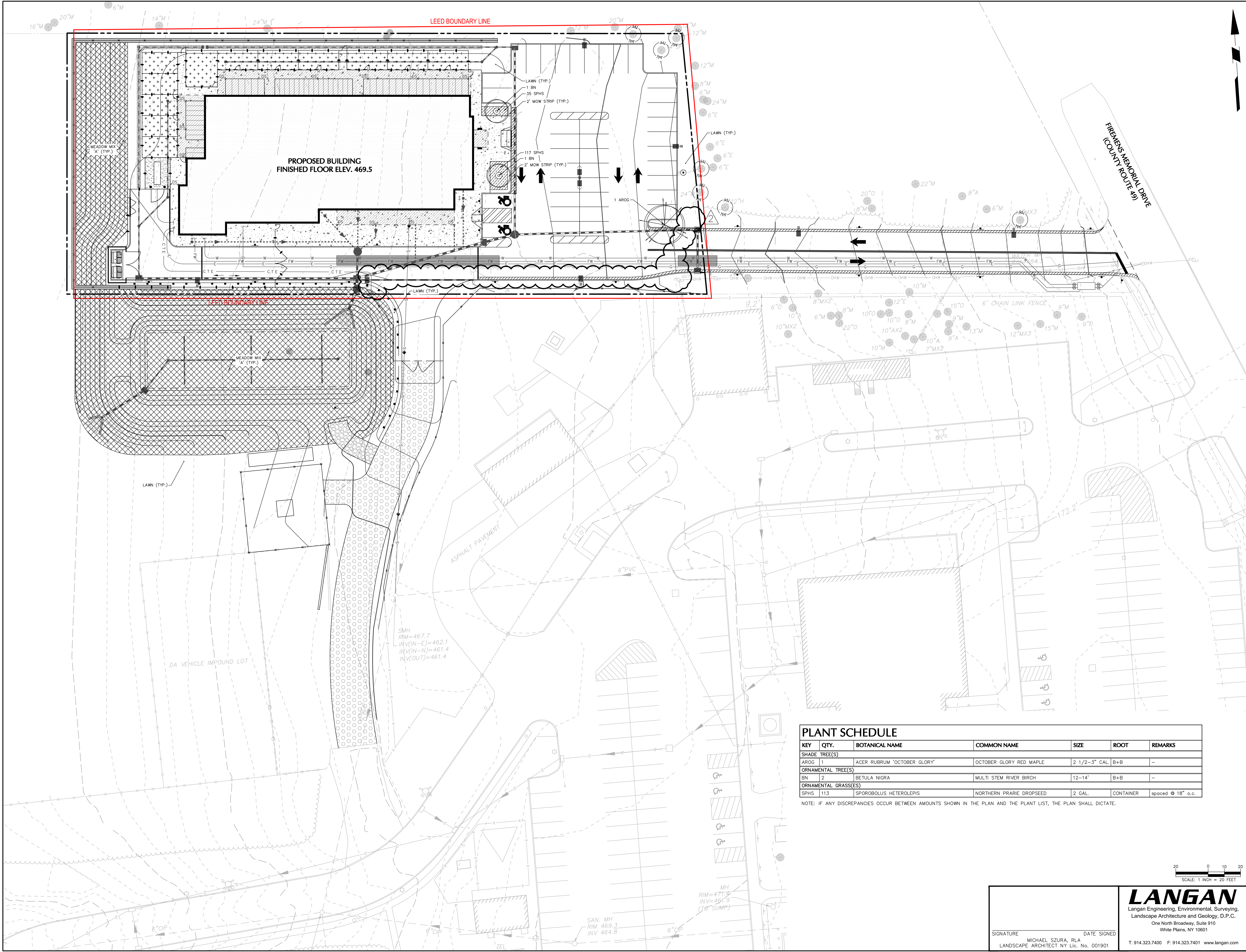
1



NOTES:
1. REFER TO ELECTRICAL DRAWINGS FOR SITE LIGHTING VOLTAGES

NOTE: LIGHT PHOTOMETRY AND CALCULATIONS FOR ADJACENT STREET LIGHTING ARE NOT INCLUDED IN THE ABOVE STATISTICS.

			
Langan Engineering, Environmental, Surveying, Landscape Architecture and Geology, D.P.C. One North Broadway, Suite 910 White Plains, NY 10601			
SIGNATURE	DATE SIGNED		
MICHAEL SZURA, P.E. LANDSCAPE ARCHITECT NY Lic. No. 001901			
		T: 914.323.7400 F: 914.323.7401 www.langan.com	



PLANT SCHEDULE						
KEY	QTY.	BOTANICAL NAME	COMMON NAME	SIZE	ROOT	REMARKS
SHADE TREE(S)						
AROG	1	ACER RUBRUM 'OCTOBER GLORY'	OCTOBER GLORY RED MAPLE	2 1/2-3" CAL.	B+B	-
ORNAMENTAL TREE(S)						
BN	2	BETULA NIGRA	MULTI STEM RIVER BIRCH	12-14'	B+B	-
ORNAMENTAL GRASS(ES)						
SPHS	113	SPOROBOLUS HETEROLEPIS	NORTHERN PRARIE DROPSOED	2 GAL.	CONTAINER	spaced @ 18" o.c.

NOTE: IF ANY DISCREPANCIES OCCUR BETWEEN AMOUNTS SHOWN IN THE PLAN AND THE PLANT LIST, THE PLAN SHALL DICTATE.

20 0 10 20
SCALE: 1 INCH = 20 FEET

SIGNATURE MICHAEL SZURA, RLA DATE SIGNED
LANDSCAPE ARCHITECT NY Lic. No. 001901

LANGAN
Langan Engineering, Environmental, Surveying,
Landscape Architecture and Geology, D.P.C.
One North Broadway, Suite 910
White Plains, NY 10601

T: 914.323.7400 F: 914.323.7401 www.langan.com

PLANTING PLAN

LP101

CAPITAL PROJECT 1483
CONSTRUCTION OF A NEW ANIMAL SHELTER FACILITY
65 FIREMENS MEMORIAL DRIVE, POMONA, NY 10970



East Coast Office
97 Broadway
Lanham, MD 20630
P: 410.716.0500
F: 410.716.8557

West Coast Office
23101 Muliken Pkwy #106
Lanham, MD 20630
P: 410.716.0500
F: 410.716.8557

ARCHITECTS SEAL

NO.	REVISION	DESCRIPTION	DATE
1.	ADDENDUM #1		11/2/21
2.	ADDENDUM #2		11/2/21