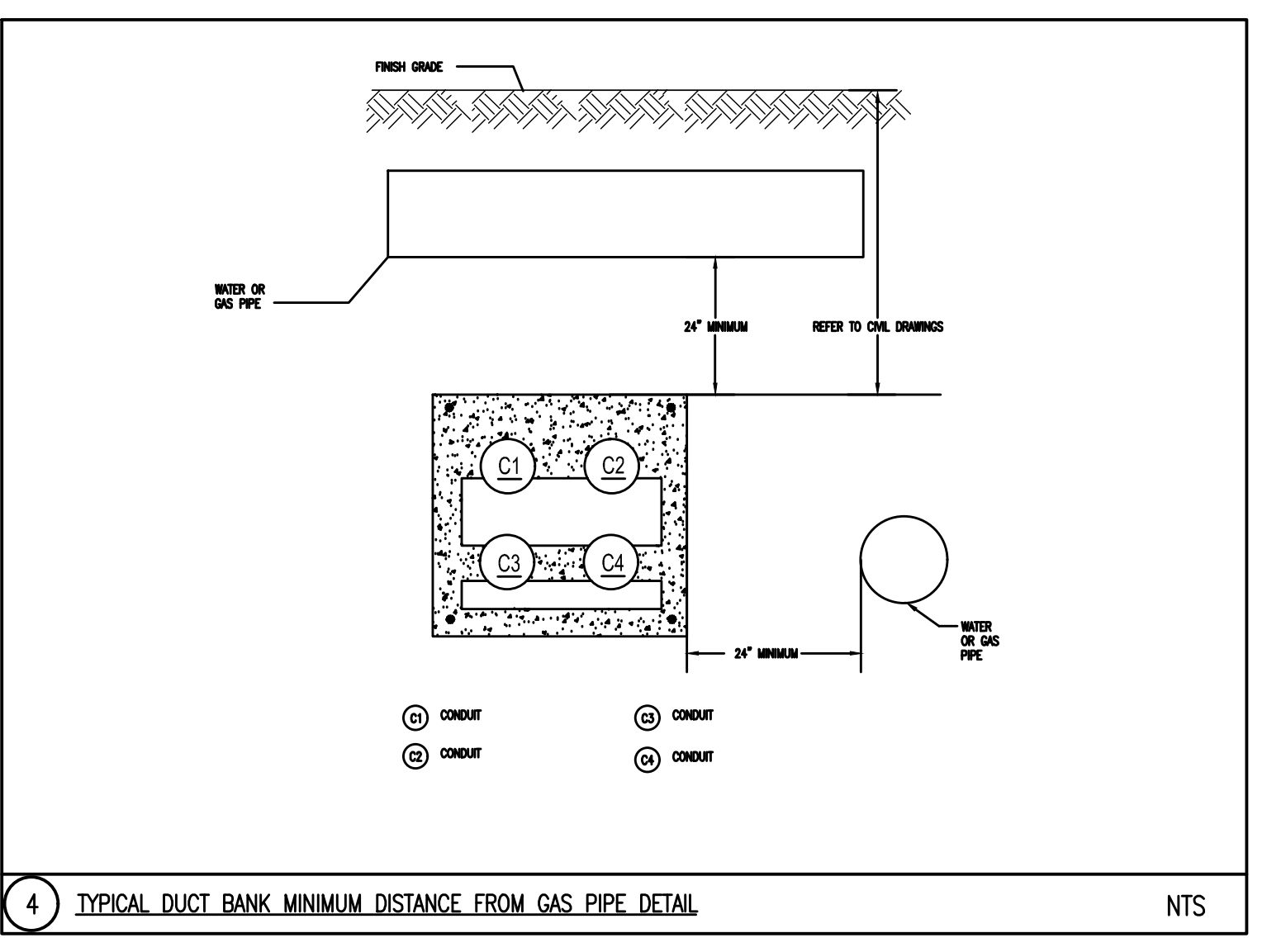
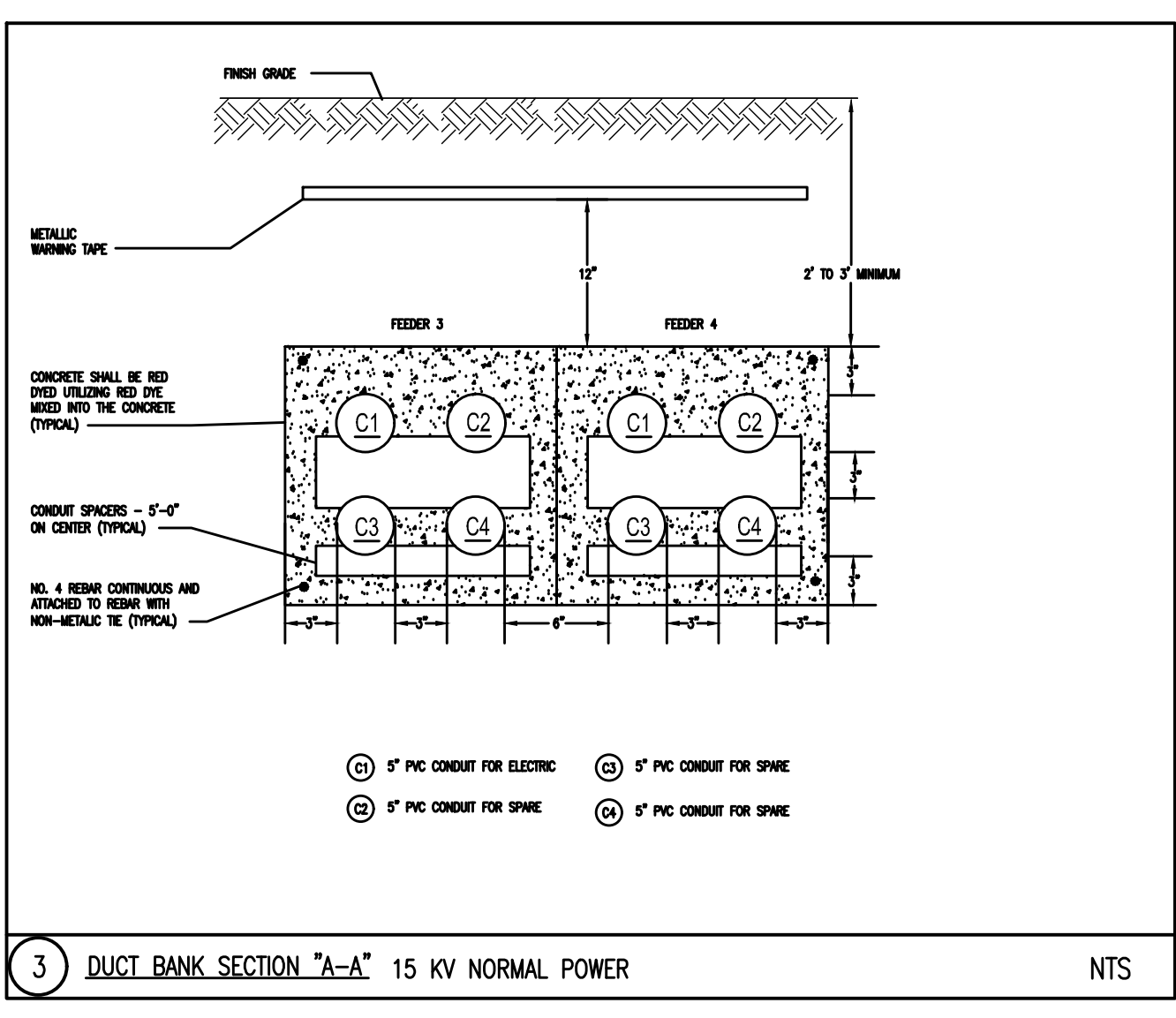
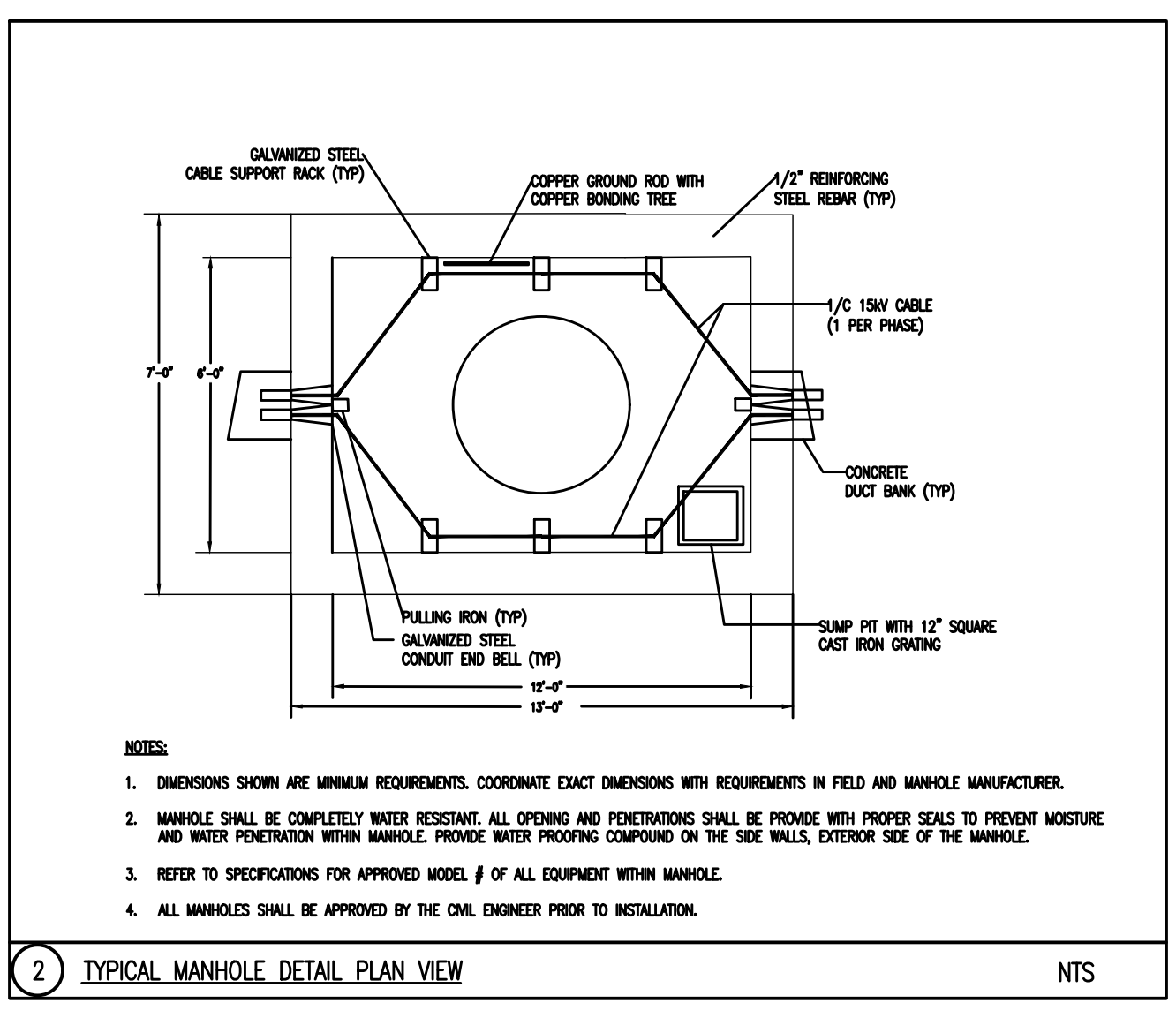
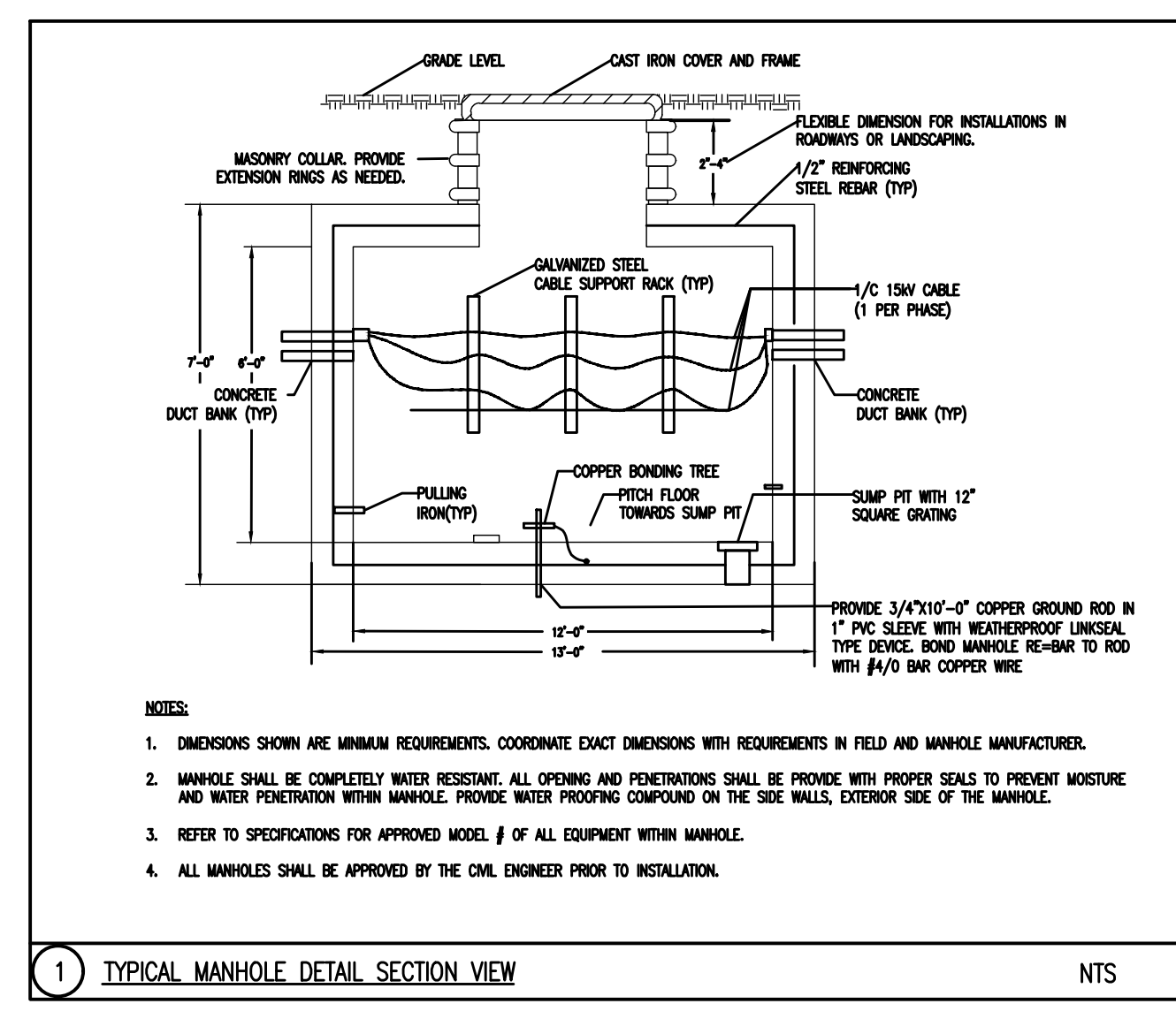
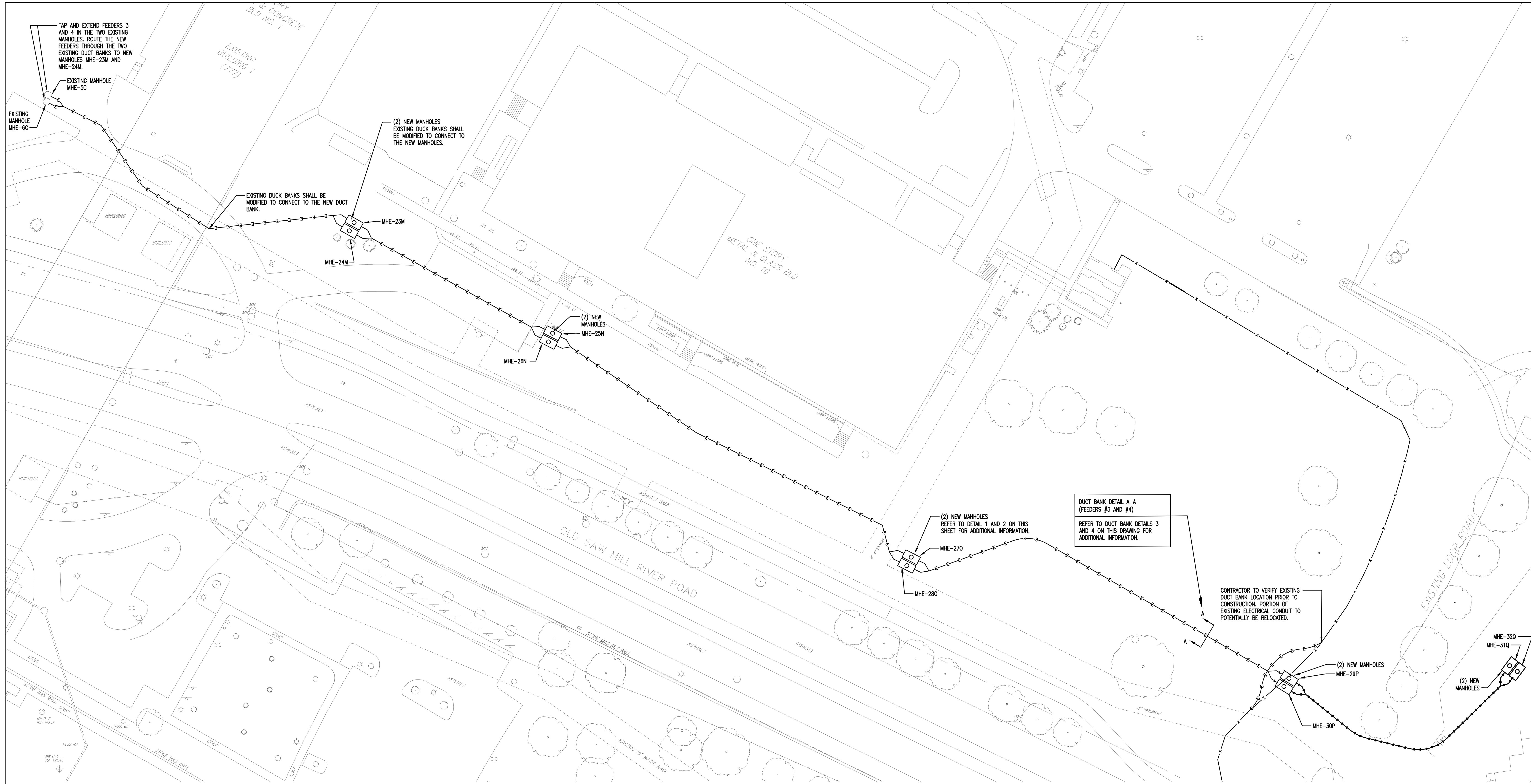


NOT FOR CONSTRUCTION

COPYRIGHT © 2021 BY JMC. All Rights Reserved. This drawing is the property of JMC and is not to be reproduced, stored in a retrieval system, or transmitted in any form or by any means, electronic, mechanical, photocopying, recording, or by any information storage and retrieval system, without the prior written permission of JMC. JMC shall not be held responsible for any errors or omissions in this drawing or for any consequences arising therefrom.



ABBREVIATIONS:

A	AMPERES
AC	ALTERNATING CURRENT
BLDG	BUILDING
C	CONDUIT
Δ	DELTA
DWG	DRAWING
EC	EMPTY CONDUIT
FT	FEET
G	GROUND
HZ	HERTZ
KOMIL	ONE THOUSAND CIRCULAR MILS
MV	MEDIUM VOLTAGE
NTS	NOT TO SCALE
P	POLE
#	PHASE
SP	SPARE
US	UNITED STATES
UNO	UNDERGROUND
V	VOLT
WYE	WYE

LEGEND:

○	NEW MANHOLE
○	EXISTING MANHOLE

CONDUIT ROUTING LEGEND:

—E—E—E—	NEW ELECTRICAL DUCT BANK
—X—X—X—	EXISTING ELECTRICAL DUCT BANK

MEDIUM VOLTAGE FEEDER SCHEDULE							
FEEDER #	CONDUCTOR PHASE	NEUTRAL	GROUND	CONDUIT SIZE (INCHES)	NUMBER OF SETS	VOLTAGE	REMARKS
FEEDER #3	3-#500MCM	-	1-#4/0	5" CONDUIT (PVC SCHEDULE 40)	1	13,800	1C, 15KV, MV-105, SHIELDED 220MIL EPR(133%)
FEEDER #4	3-#500MCM	-	1-#4/0	5" CONDUIT (PVC SCHEDULE 40)	1	13,800	1C, 15KV, MV-105, SHIELDED 220MIL EPR(133%)

REGENERON

REAL ESTATE & FACILITIES MANAGEMENT

Regeneron Pharmaceuticals Inc.
777 Old Saw Mill River Road
Tarrytown, NY 10591-6707
T: 914.847.7400
F: 914.847.7991
www.regeneron.com

Project No.
Civil Engineer
JMC
Site Development Consultants
120 Bedford Road
Armonk, NY 10504
914-273-5225
www.jmcpllc.com

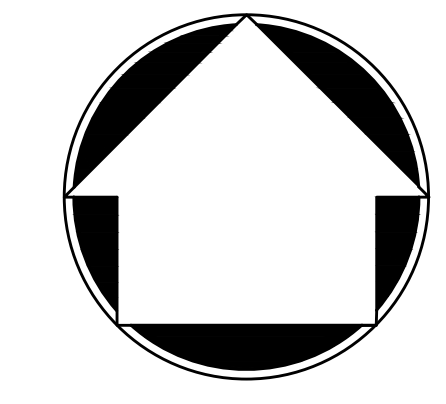
MEP Engineer
BRA
BR+H CONSULTING ENGINEERS, P.C.
105 Madison Avenue, 10th Floor
New York, NY 10016
212.840.0060
brplus.com

Attorney:
DelBello Donnellan Weingarten Wise & Wiederkehr, LLP
One North Lexington Avenue, 11th Floor
White Plains, New York 10601
Phone: (914) 681-0200

Geotechnical Engineer:
Carlin- Simpson & Associates
61 Main Street
Sayreville, NJ 08872
Phone: (914) 432-5757

Architect:
Gensler
1700 Broadway, Suite 400
New York, New York 10019
Phone: (212) 492-1472

Key Plan



No.	Date	Description
0	06.20.2022	100% CONSTRUCTION DOCUMENTS
Rev	Date	Description
Plot Date:	06.20.2022	

ALL DRAWINGS AND WRITTEN MATERIALS REPRESENTED ON THIS SHEET CONSTITUTE THE COPYRIGHTED WORK AND ARE THE SOLE PROPERTY OF REGENERON PHARMACEUTICALS. THIS SHEET MAY NOT BE REPRODUCED OR COPIED IN WHOLE OR IN PART, NOR MAY ANY OF THE DRAWINGS OR WRITTEN MATERIALS APPEARING THEREIN BE REPRODUCED OR COPIED IN ANY MANNER WITHOUT THE WRITTEN CONSENT OF REGENERON PHARMACEUTICALS. THIS SHEET MUST BE RETURNED UPON THE REQUEST OF REGENERON PHARMACEUTICALS.

Professional Seal and Signature
ANY ALTERATION OF PLANS, SPECIFICATIONS, PLATS AND REPORTS BEARING THE SEAL OF A LICENSED PROFESSIONAL ENGINEER OR LICENSED LAND SURVEYOR IS A VIOLATION OF SECTION 7209 OF THE NEW YORK STATE EDUCATION LAW, EXCEPT AS PROVIDED FOR BY SECTION 7209, SUBSECTION 2.

Vendor Name: JMC, PLLC
Vendor Project No.: 20090-2
Discipline: ELEC
Drawing Title: ELECTRICAL DAYCARE SITE PLAN

Scale: 1/32"=1'-0"

E-050