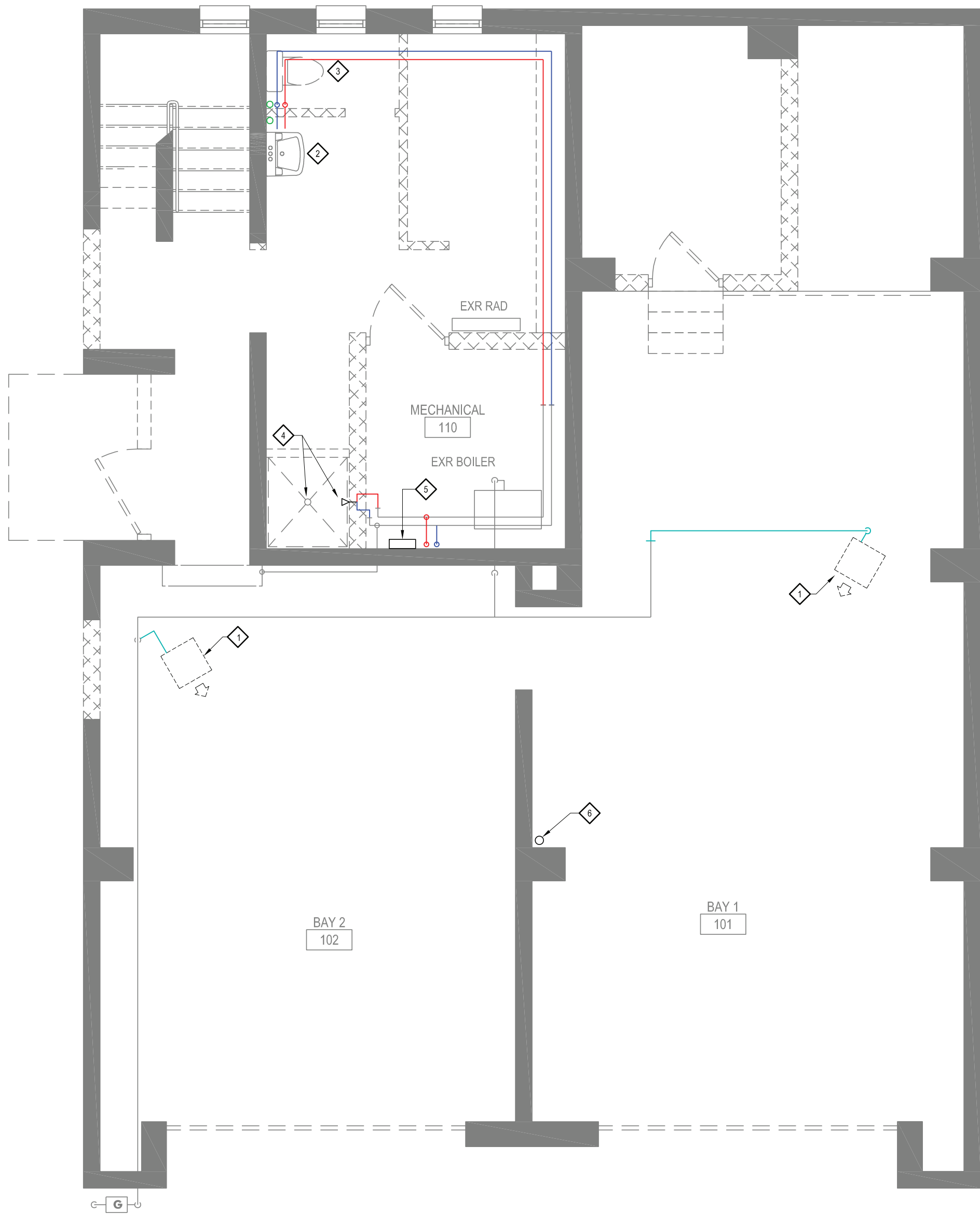


SECOND FLOOR PLUMBING DEMO PLAN 2  
1/4" = 1'-0"



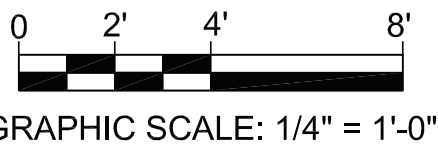
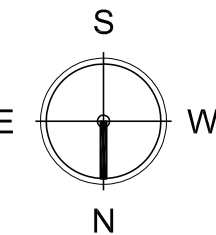
FIRST FLOOR PLUMBING DEMO PLAN 1  
1/4" = 1'-0"

GENERAL NOTES

1. PLUMBING CONTRACTOR SHALL VISIT THE SITE PRIOR TO SUBMITTING THEIR BID & SHALL PERFORM ALL INVESTIGATIVE WORK BEFORE SUBMITTING THEIR BID. COORDINATE ALL SITE VISITS WITH THE OWNER PRIOR TO VISITING THE SITE.
2. COORDINATE LOCATION OF ALL ROUGH-INS WITH THE GENERAL CONTRACTOR.
3. CONNECT ALL HOT WATER, HOT WATER RETURN, COLD WATER, VENT, & SANITARY WASTE PIPING TO ALL FIXTURES AS REQUIRED INCLUDING ALL PIPE, INSULATION, VALVES, FIXTURE STOPS, TRAPS, TAILPEICES, SUPPORT HARDWARE, ESCUTCHEONS, SLEEVES, ACCESS DOORS, CLEANOUTS, PIPING HANGERS, ETC. AS REQUIRED FOR A COMPLETE & OPERATIONAL INSTALLATION.
4. PROVIDE & INSTALL ALL NEW PLUMBING FIXTURES AT EACH LOCATION SHOWN. WORK SHALL INCLUDE ALL CUTTING & PATCHING, PIPING & CONNECTIONS, FIXTURE CARRIERS / SUPPORT HARDWARE, ETC. COORDINATE THE LOCATION & INSTALLATION OF FIXTURE CARRIERS WITH THE G.C. PRIOR TO START OF WORK. ALL EXPOSED METAL WORK SHALL BE CHROME PLATED.
5. PROVIDE & INSTALL A SHUT-OFF VALVE FOR EACH WATER SUPPLY BRANCH TO EACH FIXTURE. VALVES SHALL BE IN AN EASILY ACCESSIBLE LOCATION.
6. ALL WORK SHALL BE DONE IN ACCORDANCE WITH ALL LOCAL & NATIONAL PLUMBING CODES. PLUMBING CONTRACTOR SHALL BE RESPONSIBLE FOR OBTAINING ALL PERMITS & INSPECTIONS FOR WORK DONE UNDER THE PLUMBING CONTRACT.
7. PLUMBING CONTRACTOR WILL BE RESPONSIBLE FOR THE COORDINATION OF ALL WORK WITH ALL OTHER TRADES PRIOR TO THE INSTALLATION OF ANY WORK. CONTRACTOR WILL BE RESPONSIBLE FOR RE-DOING ANY WORK IN CONFLICT WITH OTHER TRADES AS A RESULT OF IMPROPER WORK COORDINATION.
8. CONTRACTOR SHALL PROVIDE & INSTALL INSULATION FOR ALL NEW HOT & COLD WATER PIPING INSTALLED.
9. ALL NEW WORK SHALL BE PROPERLY TESTED & CLEANED BEFORE BEING PUT INTO SERVICE. CONTRACTOR SHALL PROVIDE A ONE YEAR WARRANTY FOR ALL MATERIALS & WORKMANSHIP FROM THE DATE OF FINAL ACCEPTANCE OF THE PROJECT BY THE ENGINEER (PROJECT CLOSEOUT).
10. ALL NEW WORK SHALL BE PERFORMED IN ACCORDANCE WITH MANUFACTURERS' RECOMMENDATIONS.
11. WHERE DISSIMILAR METALS ARE CONNECTED, CONTRACTOR SHALL PROVIDE & INSTALL AN APPROVED DIELECTRIC UNION / NON-GALVANIC ISOLATOR.
12. ALL DRAINAGE PIPING SHALL BE INSTALLED WITH A PITCH OF 1/4" PER FOOT UNLESS SPECIFICALLY NOTED OTHERWISE OR SPECIFICALLY APPROVED BY THE ENGINEER.
13. NEW VENT PIPING FOR DRAINAGE SYSTEMS SHALL BE INSTALLED USING LONG TURN ELBOWS AT ALL CHANGES IN DIRECTION. COORDINATE VENT STACK LOCATIONS WITH THE G.C. PRIOR TO INSTALLATION.
14. PROVIDE & INSTALL FULL LINE SIZE CLEANOUTS AT EACH INDICATED LOCATION. CLEANOUTS TO BE INSTALLED EVERY 50 FEET ON HORIZONTAL PIPING, AT ALL CHANGES IN DIRECTION & AT ALL LEADER / SOIL / VENT / WASTE STACKS OR AS OTHERWISE REQUIRED BY CODE.
15. PLUMBING CONTRACTOR SHALL PROVIDE COORDINATION DRAWINGS TO THE GENERAL CONTRACTOR DETAILING LOCATIONS OF PLUMBING ROUGH-INS, PIPE ROUTING AND ELEVATIONS, CLEANOUTS, ACCESS DOORS, AND WALL / ROOF / FLOOR OPENINGS.

REMOVAL NOTES

- ◇ DISCONNECT GAS-FIRED UNIT HEATER AND REMOVE GAS PIPING BACK TO POINT INDICATED.
- ◇ REMOVE SINK AND ASSOCIATED WASTE, VENT AND SUPPLY PIPING TO POINT INDICATED.
- ◇ REMOVE FLOOR MOUNTED WATER CLOSET INCLUDING WASTE AND SUPPLY ROUGH-INS.
- ◇ REMOVE SHOWER HEAD, MIXING VALVE, SUPPLY ROUGH-INS AND SHOWER DRAIN. CAP DRAIN.
- ◇ REMOVE TANKLESS ELECTRIC WATER HEATER AND ASSOCIATED PIPING.
- ◇ REMOVE ROOF DRAIN. ROOF LEADER TO REMAIN FOR RECONNECTION IN PROPOSED WORK.

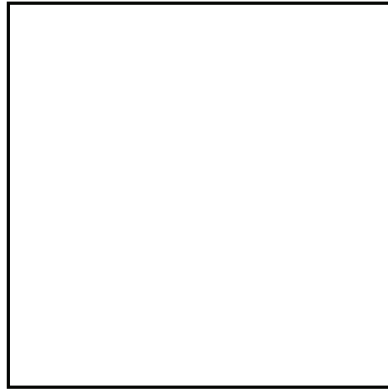


GRAPHIC SCALE: 1/4" = 1'-0"

COPYRIGHT© ALL RIGHTS RESERVED



VILLAGE/TOWN OF MOUNT KISCO  
WATER DEPARTMENT BUILDING ADDITION  
43 COLUMBUS AVE, MOUNT KISCO, NY 10549

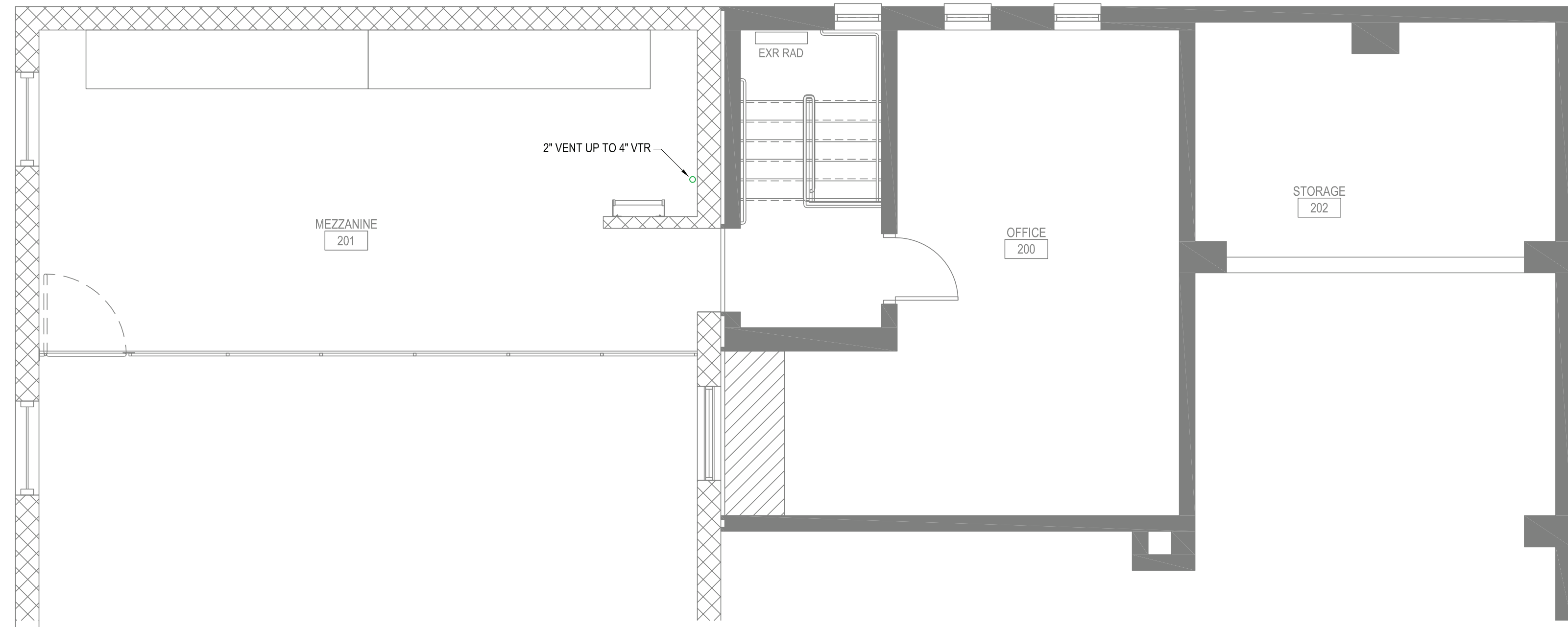


4			
3			
2			
1			
No	Date	Revision	By

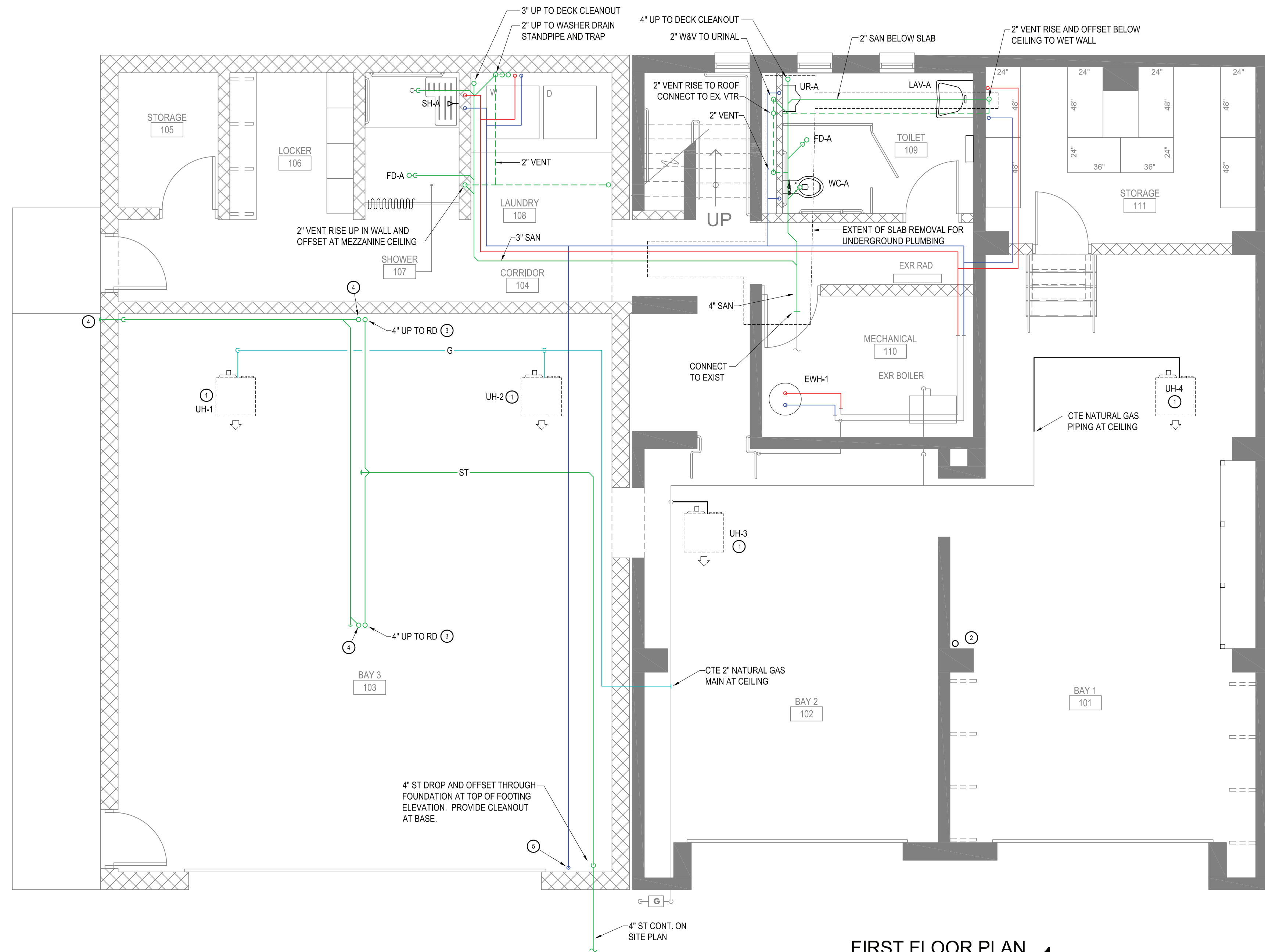
Drawn By: ks  
Checked By: ks  
BDS Proj. #: 21-01  
Date: June 3, 2022

Sheet Title  
PLUMBING  
DEMO PLANS

Sheet No.  
P-1  
CONSTRUCTION DOCUMENTS



MEZZANINE PLAN 2  
1/4" = 1'-0"



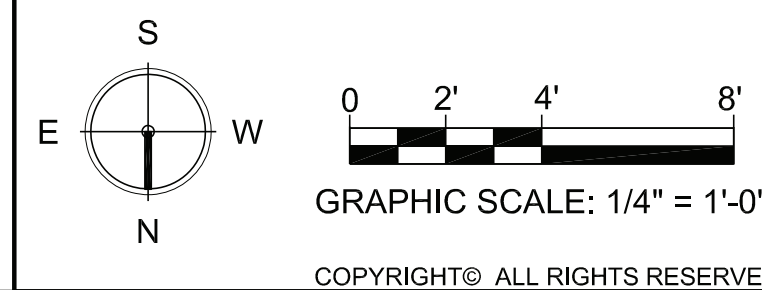
FIRST FLOOR PLAN 1  
1/4" = 1'-0"

GENERAL NOTES

1. DOMESTIC WATER SUPPLY PIPING SHALL BE 3/4" UNLESS NOTED OTHERWISE.
2. PLUMBING FIXTURE BRANCH SUPPLY CONNECTIONS SHALL BE 1/2" UNLESS NOTED OTHERWISE.

DRAWING NOTES

1. CONNECT GAS TO UNIT HEATER INSTALLED BY M.C. PROVIDE DIRT LEG AND LISTED SHUTOFF VALVE.
2. ROOF DRAIN FURNISHED AND INSTALLED BY THE GC. CONNECT TO EXISTING ROOF LEADER.
3. EMERGENCY OVERFLOW TYPE ROOF DRAIN FURNISHED AND INSTALLED BY THE GC. PROVIDE STORM AND OVERFLOW PIPING AS INDICATED.
4. 4" EMERGENCY OVERFLOW ROOF DRAIN. DROP DOWN TO ZURN Z199 DOWNSPOUT NOZZLE 24" ABOVE GRADE.
5. 3/4" COLD SUPPLY TO HOSE BIB MOUNTED 36" AFF.

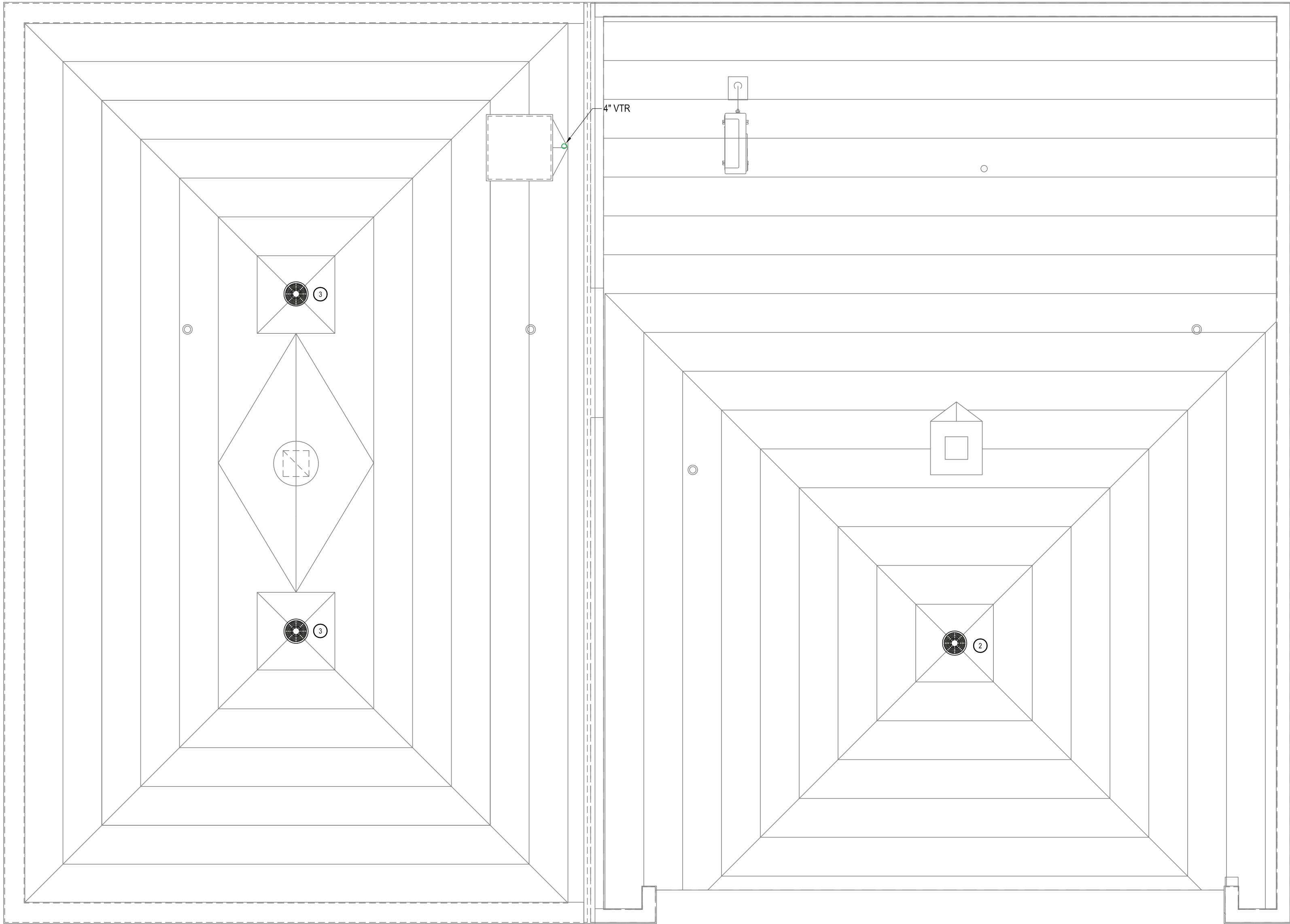




PLUMBING SPECIALTIES		
TAG	SPECIFICATION	DESIGN BASIS
FD-A	3" floor drain with trap seal and deep seal trap, Dura-Coated cast iron body with bottom outlet, combination invertible membrane clamp and adjustable collar with seepage slots and polished nickel bronze top.  Sure Seal Model 3000 Inline Floor Drain Trap Sealer. Floor rating ASSE-1072 AF-GW.	ZURN Z415-ZN
DPCO-A	Adjustable floor cleanout, Dura-Coated cast iron body, with gas and watertight ABS tapered thread plug, and round scoriated polished nickel bronze secured top adjustable to finished floor.	ZURN Z1400

PLUMBING FIXTURE SCHEDULE								
TAG	DESCRIPTION	TRIM AND ACCESSORIES	MOUNTING	CONNECTIONS				BASIS OF DESIGN
				SAN	VENT	CW	HW	
WC-A	FLOOR MOUNTED PRESSURE ASSIST TOILET, 1.1 GPF, WHITE VITREOUS CHINA, ELONGATED BOWL.	ELONGATED TOILET SEAT WITH SLOW CLOSE SNAP-OFF HINGES. QUARTER TURN WALL STOP CHROME PLATED BRASS ONE-PIECE ESCUTCHEON.	FLOOR	3	2	½"	-	AMERICAN STANDARD CADET RIGHT HEIGHT MODEL 2467.100
UR-A	WALL MOUNTED HIGH EFFICIENCY URINAL, 0.12F GPF, WHITE VITREOUS CHINA, WASHOUT FLUSH.	SLOAN ROYAL 186-0.125-DBP MANUAL FLUSHOMETER. FLOOR MOUNTED CARRIER.	WALL	2	1½"	¾"	-	AMERICAN STANDARD DECORUM MODEL 6042.001EC
LAV-A	WALL-HUNG LAVATORY, 18-1/2" x 17" OVERALL. WHITE VITREOUS CHINA.	WALL HANGER. AMERICAN STANDARD MONTERREY SINGLE CONTROL CENTERSET FAUCET LESS POP-UP DRAIN. CHROME PLATED GRID STRAINER. QUARTER TURN WALL STOPS. 1-1/4" CAST BRASS TRAP. CHROME PLATED BRASS ONE-PIECE ESCUTCHEONS.	WALL	1½"	1½"	½"	½"	AMERICAN STANDARD DECLYN MODEL 0321.026
SHA	- 2" PERFORATED CHROME PLATED BRASS SHOWER DRAIN ASSEMBLY.	SHOWER PACKAGE INCLUDING HANDSHOWER, SHOWERHEAD, 60" HANDSHOWER HOSE, WALL SUPPLY ELBOW, SHOWER ARM, WALL DIVERTER VALVE, PRESSURE BALANCE SHOWER VALVE, TRIM, POLISHED CHROME FINISH.	-	2"	1½"	½"	½"	KOHLER SHOWER PACKAGE: BELLWETHER K-9178 DRAIN COVER K-9159 SHOWER DRAIN K-9132 FORTE HANDSHOWER K-22165 FORTE SUPPLY ELBOW K-22174 FORTE SLIDEBAR TRIM KIT K-349 TRANSFER VALVE K-728-K TRANSFER VALVE TRIM K-T10290 SHOWER VALVE K-8304-KS SHOWER VALVE TRIM K-TS10276-4 30" SLIDEBAR K-8524 80" SHOWER HOSE K-9514

ELECTRIC WATER HEATER SCHEDULE											
TAG	LOCATION	NO. OF ELEMENTS	ELEMENT WATTAGE (UPPER / LOWER)	OPERATION	MAX WORKING PRESSURE (PSIG)	CAPACITY (GAL)	RECOVERY		ELECTRICAL		DESIGN BASIS
							GPH	TEMP RISE	VOLTAGE	AMPS	
EW-H-1	MECHANICAL 110	2	4500 / 4500	NON-SIMULTANEOUS	150	40	18	100	208/1	21.6	AO SMITH DEN-40



PLUMBING ROOF PLAN  
1/4" = 1'-0"

1

DRAWING NOTES

- CONNECT GAS TO UNIT HEATER INSTALLED BY M.C. PROVIDE DIRT LEG AND LISTED SHUTOFF VALVE.
- ROOF DRAIN FURNISHED AND INSTALLED BY THE GC. CONNECT TO EXISTING ROOF LEADER.
- EMERGENCY OVERFLOW TYPE ROOF DRAIN FURNISHED AND INSTALLED BY THE GC. PROVIDE STORM AND OVERFLOW PIPING AS INDICATED.
- 4" EMERGENCY OVERFLOW ROOF DRAIN. DROP DOWN TO ZURN Z199 DOWNSPOUT NOZZLE 24" ABOVE GRADE.
- 3/4" COLD SUPPLY TO HOSE BIB MOUNTED 36" AFF.

S

E

N

W

0

2'

4'

8'

GRAPHIC SCALE: 1/4" = 1'-0"

COPYRIGHT© ALL RIGHTS RESERVED

4			
3			
2			
1			

No	Date	Revision	By
Drawn By:	ks		
Checked By:	ks		
BDS Proj. #:	21-01		
Date:	June 3, 2022		

Sheet Title
PLUMBING ROOF PLAN

Sheet No.
P-3
CONSTRUCTION DOCUMENTS