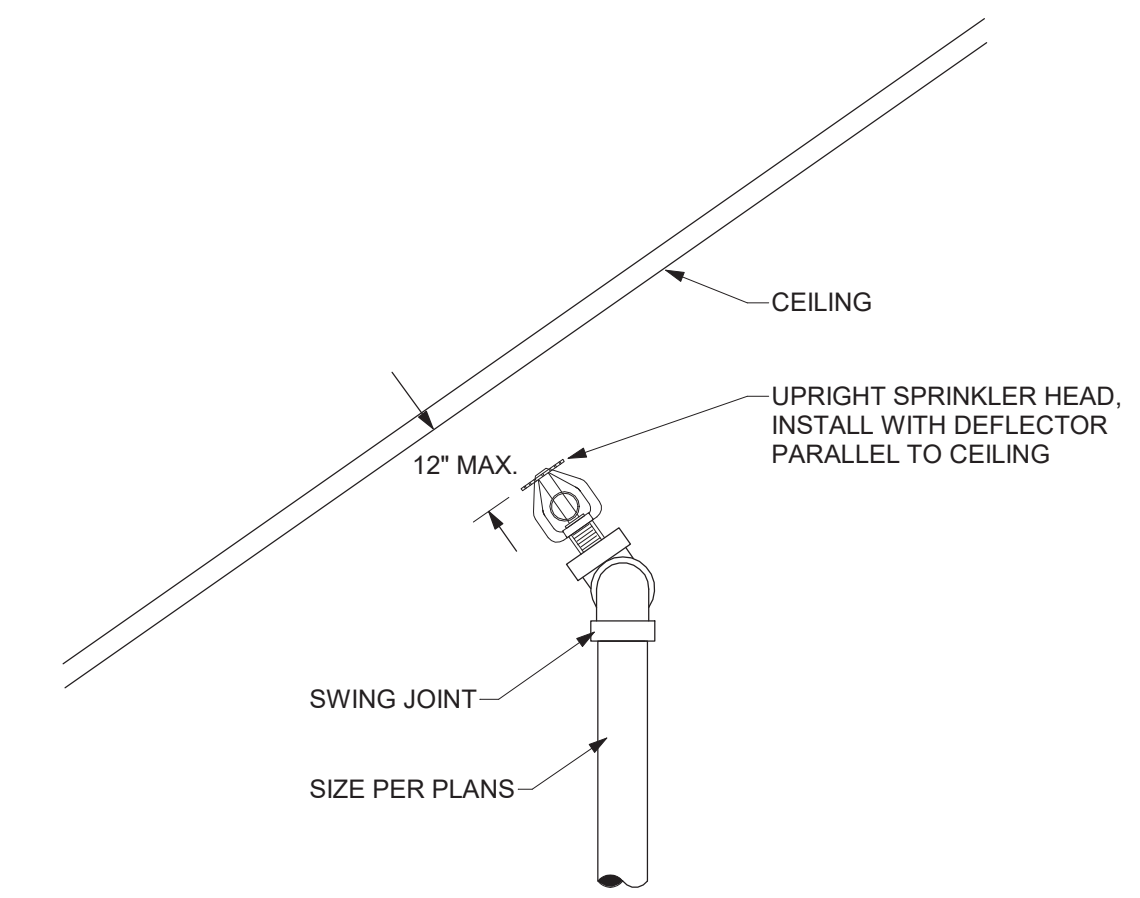
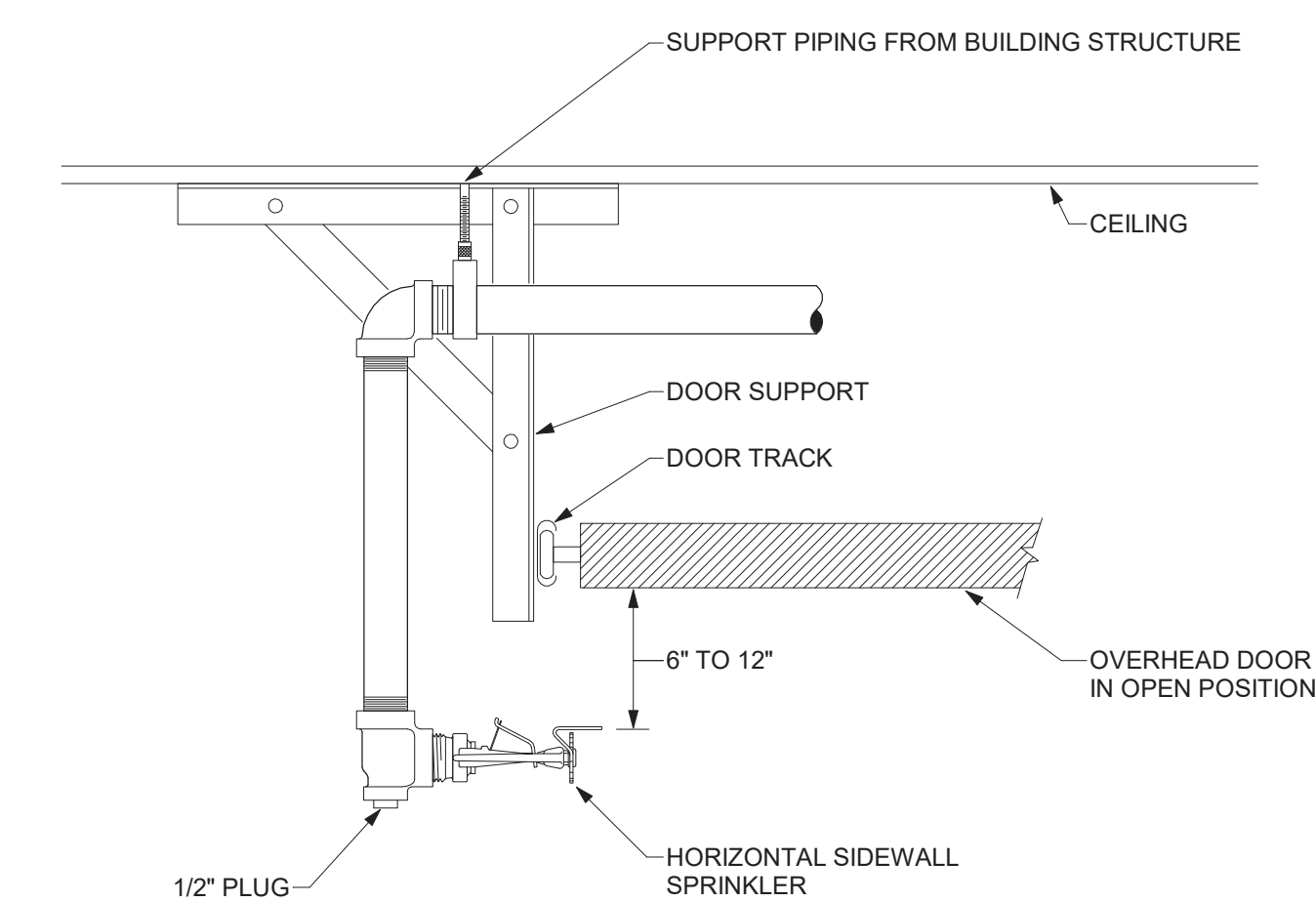


1 SPRINKLER FLOOR CONTROL ASSEMBLY DETAIL
NOT TO SCALE

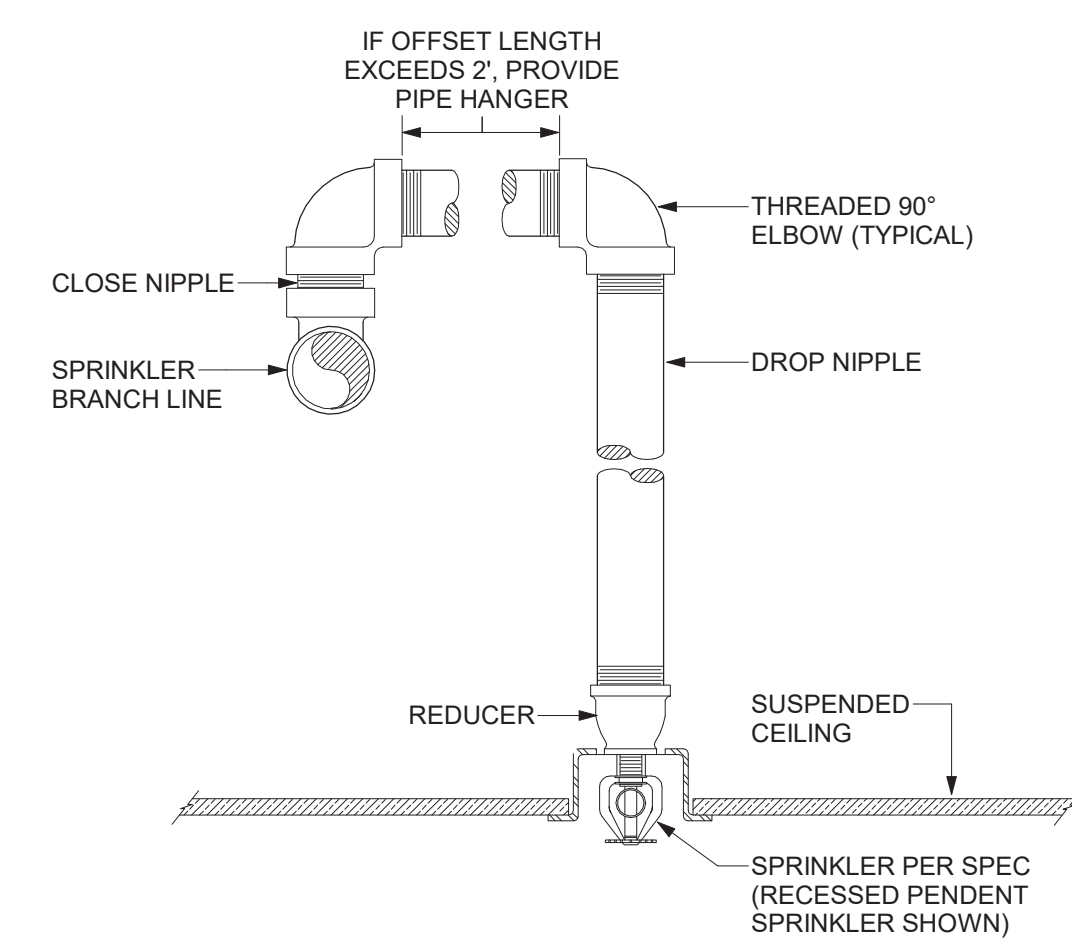


3 SPRINKLER AT SLOPED CEILING DETAIL
NOT TO SCALE

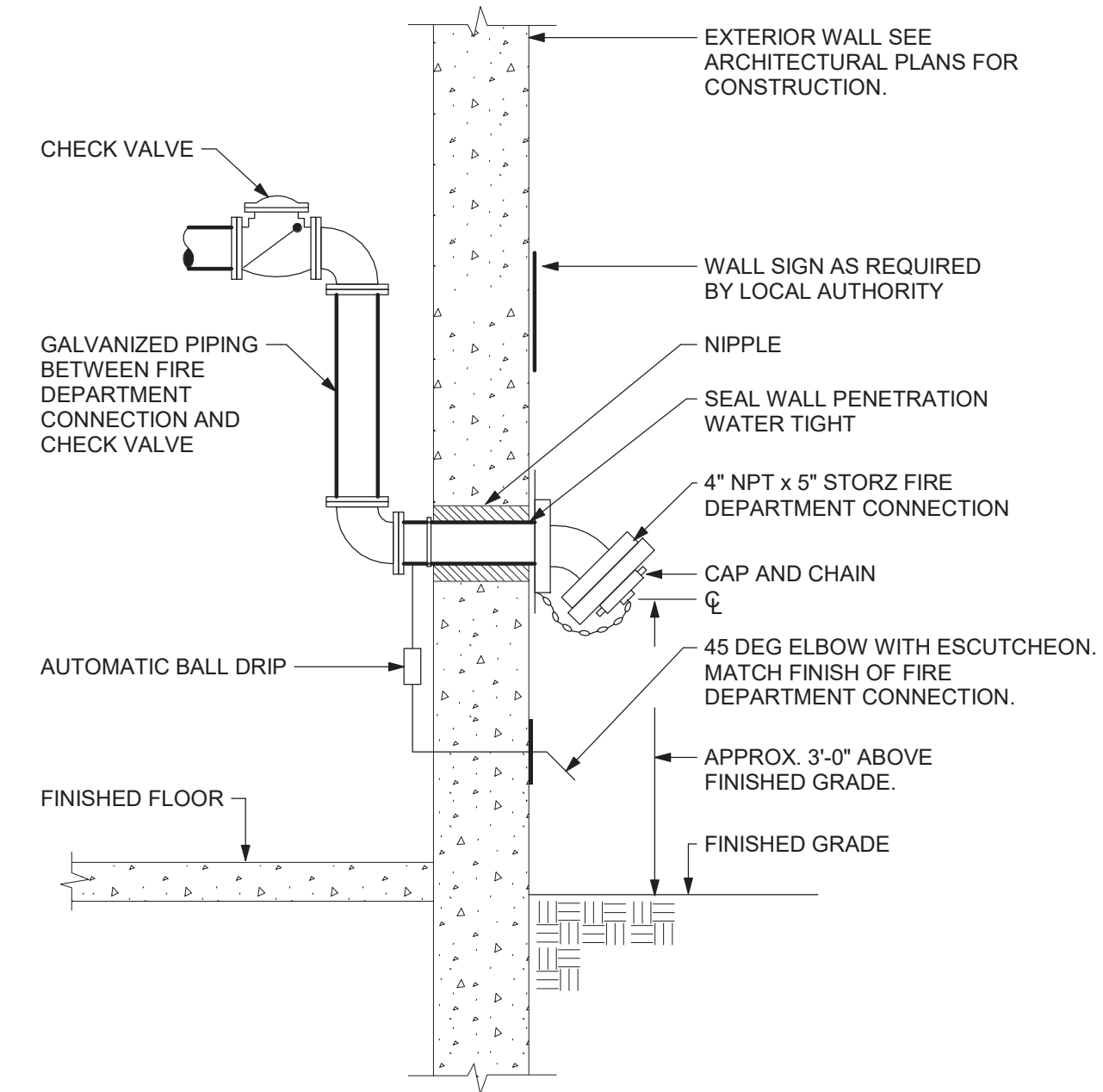


- DETAIL NOTES:
- A. SUPPORT PIPING FROM BUILDING STRUCTURE. DO NOT HANG PIPING FROM OVERHEAD DOOR SUPPORTS OR TRACK.
 - B. COORDINATE INSTALLATION WITH MOVING PARTS OF DOOR ASSEMBLY

4 SPRINKLER BELOW OVERHEAD DOOR
NOT TO SCALE

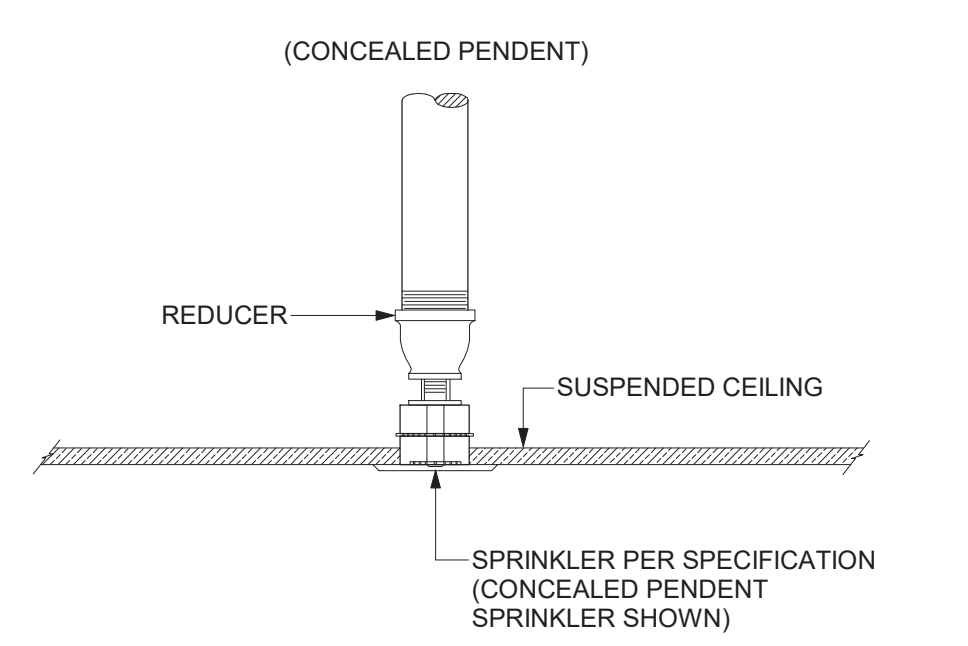
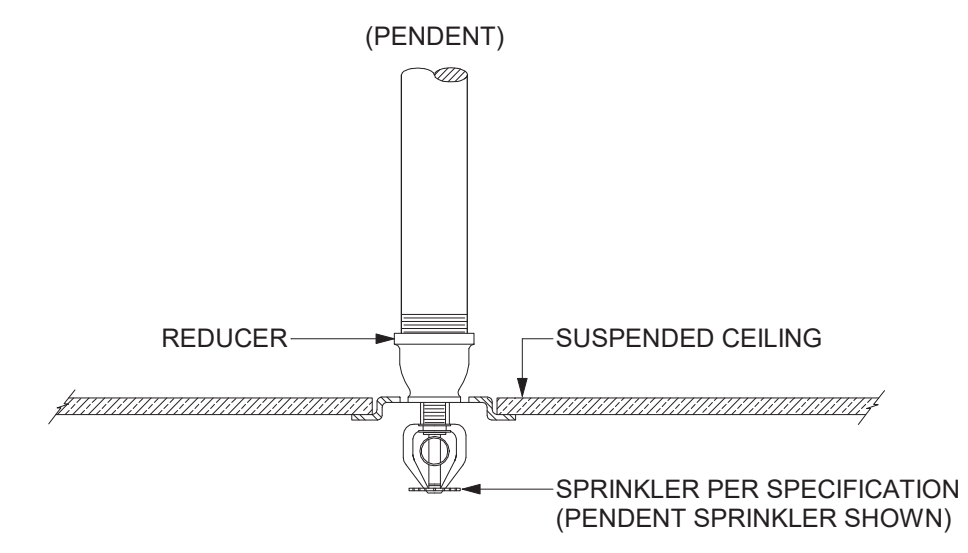
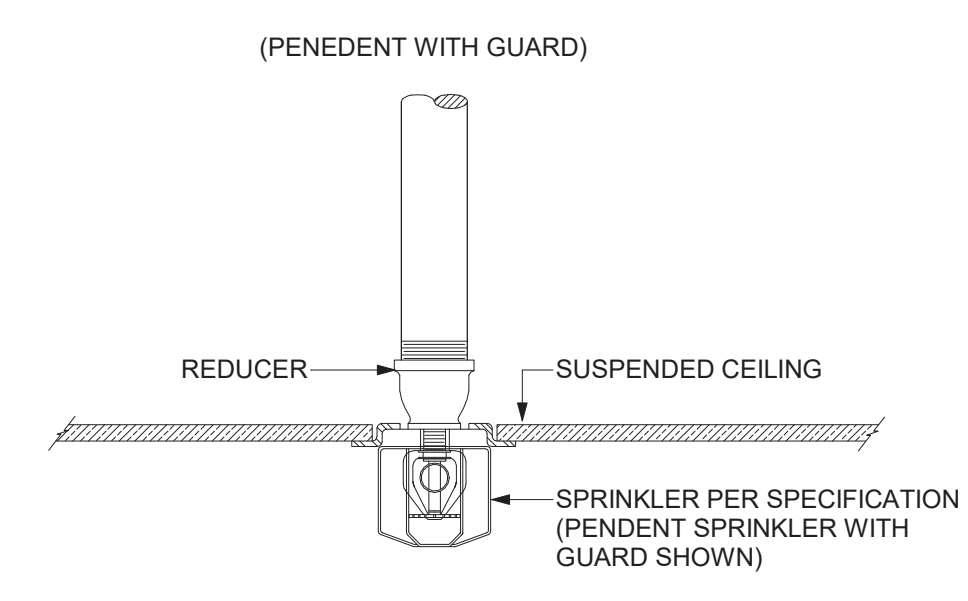


2 RETURN BEND DETAIL
NOT TO SCALE



- DETAIL NOTES:
- A. FIRE DEPARTMENT CONNECTION SHALL MATCH LOCAL FIRE DEPARTMENT TYPE, THREAD AND SIZE.
 - B. FIRE DEPARTMENT CONNECTION SHALL NOT BE OBSCURED OR BLOCKED BY PLANTINGS.
 - C. STORZ FIRE DEPARTMENT CONNECTIONS: PROVIDE 22-1/2° ELBOW FOR EASE OF TENSION ON FIRE HOSE CONNECTION IF INSTALLED GREATER THAN 2'-6" ABOVE FINISHED GRADE.

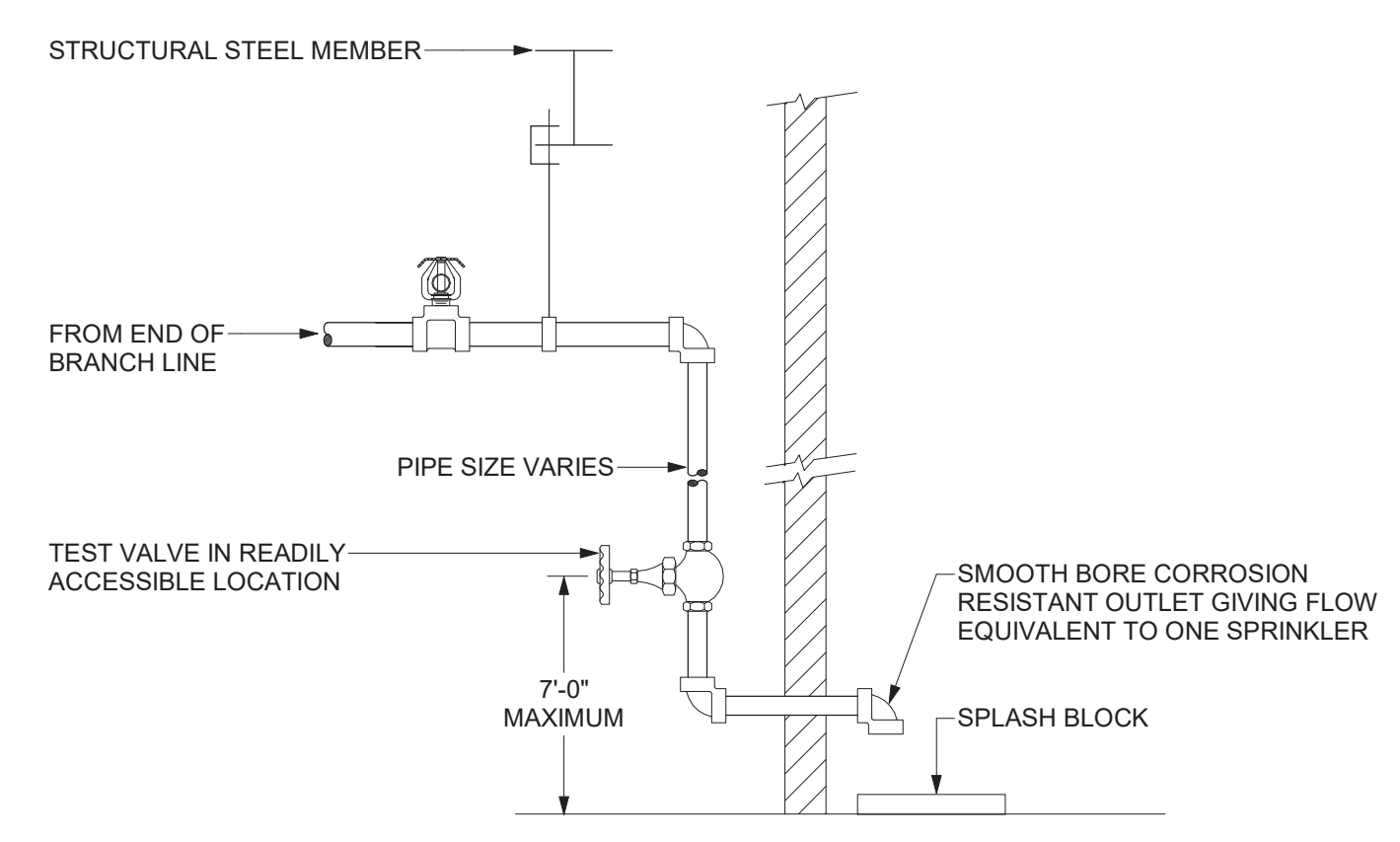
5 FIRE DEPARTMENT CONNECTION DETAIL
NOT TO SCALE



FIRE PROTECTION SYMBOL LIST	
SYMBOL	DESCRIPTION
	POINT OF CONNECTION
NTS	NOT TO SCALE
AFF	ABOVE FINISHED FLOOR
GC	GENERAL CONTRACTOR
MC	MECHANICAL CONTRACTOR
PC	PLUMBING CONTRACTOR
EC	ELECTRICAL CONTRACTOR
NEW PIPING	
FP	FIRE PROTECTION SERVICE (FP)
S	SPRINKLER MAIN/BRANCH PIPING (S)
D	SPRINKLER DRAIN PIPING (D)
	ELBOW DOWN
	45° OFFSET
	ELBOW UP
	BOTTOM/TEE CONNECTION
	TOP TEE CONNECTION
	PIPE CONTINUATION
	DRAIN VALVE
	CHECK VALVE
	BACKFLOW PREVENTER (BFP)
	SHUT-OFF VALVE WITH TAMPER SWITCH (TS)
	FIRE DEPARTMENT CONNECTION (FDC)
(X)	DRAWING KEYNOTE

FIRE PROTECTION GENERAL NOTES:

- A. THE WORK COVERED CONSISTS OF FURNISHING ALL LABOR AND MATERIAL NECESSARY TO INSTALL, COMPLETE AND READY FOR CONTINUOUS OPERATION, THE FIRE PROTECTION SYSTEM(S), APPARATUS AND EQUIPMENT FOR THIS PROJECT, AS SHOWN ON DRAWINGS, DESCRIBED IN SPECIFICATIONS, AS REQUIRED BY NFPA 13 2016 ED. AND THE AUTHORITY HAVING JURISDICTION.
- B. THIS PROJECT IS "DESIGN BUILD". THESE DRAWINGS AND SPECIFICATIONS ARE INTENDED TO INDICATE MINIMUM WORK AND MINIMUM STANDARDS FOR EQUIPMENT, MATERIALS AND PROCEDURES.
- C. ANY AND ALL PERMITS REQUIRED FOR INSTALLATION OF ANY MATERIAL SHALL BE OBTAINED BY THE SPRINKLER CONTRACTOR AS PART OF THE WORK, INCLUDING ALL FEES OR EXPENSES INCURRED.
- D. ROUTING OF SPRINKLER MAINS, BRANCHES, AND SPRINKLERS SHALL BE THOROUGHLY COORDINATED BY THE SPRINKLER CONTRACTOR WITH OTHER TRADES AND BUILDING STRUCTURE PRIOR TO SUBMISSION OF COORDINATED SHOP DRAWINGS, ORDERING OF FABRICATED PIPING AND INSTALLATION.
- E. THE SPRINKLER CONTRACTOR SHALL PERFORM A NEW HYDRANT FLOW TEST AND SHALL BASE THE HYDRAULIC CALCULATIONS ON THESE RESULTS.
- F. PRESSURE TEST ALL NEW PIPING AND ALARMS PER NFPA 13 2016 ED. COMPLETE AND FILE ALL REPORTS AND CERTIFICATIONS REQUIRED. SUBMIT TO OWNER COPIES OF ALL REPORTS AND CERTIFICATIONS, TOGETHER WITH A COPY OF NFPA 25 2016 ED.
- G. ALL SPRINKLER SYSTEM PIPING IN FINISHED AREAS SHALL BE CONCEALED ABOVE CEILINGS UNLESS OTHERWISE NOTED.
- H. SPRINKLERS INSTALLED IN AREAS WITH NO FINISH CEILING SHALL BE LOCATED AS HIGH AS POSSIBLE. SPRINKLERS SUBJECT TO PHYSICAL DAMAGE, OR WITH A DEFLECTOR ELEVATION 7'-6" OR LESS, SHALL BE INSTALLED WITH APPROVED AND LISTED SPRINKLER GUARDS.
- I. WHERE SPRINKLER PIPING IS LEFT EXPOSED, THE SPRINKLER CONTRACTOR SHALL CLEAN PIPING AND COORDINATE PAINTING WITH ARCHITECT.
- J. THE SPRINKLER CONTRACTOR SHALL PROVIDE SPRINKLER PROTECTION UNDER ALL MECHANICAL DUCTWORK OR OTHER OBSTRUCTION IN EXCESS OF 4'-0" IN WIDTH, IN EXPOSED STRUCTURE AREAS, IN ACCORDANCE WITH NFPA 13 2013 ED.
- K. ALL PIPING THROUGH CONCRETE FLOORS AND FIRE RATED WALLS OR PARTITIONS SHALL BE PROVIDED WITH SLEEVES AND FIRE STOPPED WITH UL RATED ASSEMBLIES OF EQUAL FIRE RATING.
- L. THE FIRE SPRINKLER CONTRACTOR SHALL BE RESPONSIBLE FOR THE REMOVAL, STORAGE AND CUTTING OF ANY CEILING TILES TO ACCOMMODATE SPRINKLERS AND PIPING. THE SPRINKLER CONTRACTOR SHALL ALSO REINSTALL THE CEILING TILES UPON COMPLETION OF THE WORK AND REPLACE ANY DAMAGED TILES.
- M. THE SPRINKLER CONTRACTOR SHALL DELIVER MATERIAL TO THE JOB, UNLOAD AND STORE MATERIALS IN A LOCATION AS DETERMINED BY THE OWNER'S REPRESENTATIVE.
- N. THE SPRINKLER CONTRACTOR SHALL MAINTAIN THE WORK PREMISES FREE FROM ACCUMALATION OF WASTE MATERIAL OR REFUSE COVERED BY THIS WORK. AT THE COMPLETION OF THE WORK, REMOVE ALL SURPLUS MATERIALS, TOOLS, ETC. AND LEAVE THE PREMISES CLEAN.
- O. THE SPRINKLER CONTRACTOR SHALL PROVIDE PROPER SIESMIC RESTRAINTS FOR ALL NEW PIPING IN ACCORDANCE WITH NFPA 13 2016 ED. AND AS REQUIRED BY ASCE 7
- P. THESE SPRINKLER DRAWINGS ARE DIAGRAMMATIC AND SHOWN AS A REPRESENTATIVE DESIGN ONLY. THE CONTRACTOR SHALL VISIT THE SITE, READ ALL DRAWINGS, AND MAKE DETAILED NOTES OF NECESSARY OFFSETS REQUIRED FOR INSTALLATION OF THE WORK.



- DETAIL NOTE:
- A. NOT LESS THAN 4' OF EXPOSED TEST PIPE IN WARM ROOM BEYOND VALVE WHEN PIPE EXTENDS THRU WALL TO OUTSIDE

6 INSPECTOR'S TEST CONNECTION DETAIL (WET SYSTEM)
NOT TO SCALE

Project:

VILLAGE OF ARDSLEY, NY

NEW PUBLIC WORKS FACILITY

220 HEATHERDELL ROAD,
VILLAGE OF ARDSLEY,
NEW YORK 10502

Weston & Sampson

WESTON & SAMPSON, P.E., L.S., L.A., P.C.
1 Winners Circle Suite 130
Albany, NY 12205
(508) 698-3034 (800) SAMPSON
www.westonandsampson.com

Consultants:

56 Lafayette Avenue, Suite 350
White Plains, NY 10603
(914) 662-9403
www.calgiconstruction.com

ENGINEERING
Mechanical/Electrical Engineering Consultants
Capital District | Rochester | Buffalo | Syracuse
Established 1919

RHINEBECK ARCHITECTURE

Seal:

Revisions:

Rev	Date	Description

Issued For: BID

PROJECT TRUE

SCALE: AS NOTED

Date: APRIL 7, 2022

Drawn By: CES

Reviewed By: PJW

Approved By: BAB

W&S Project No: N2190088

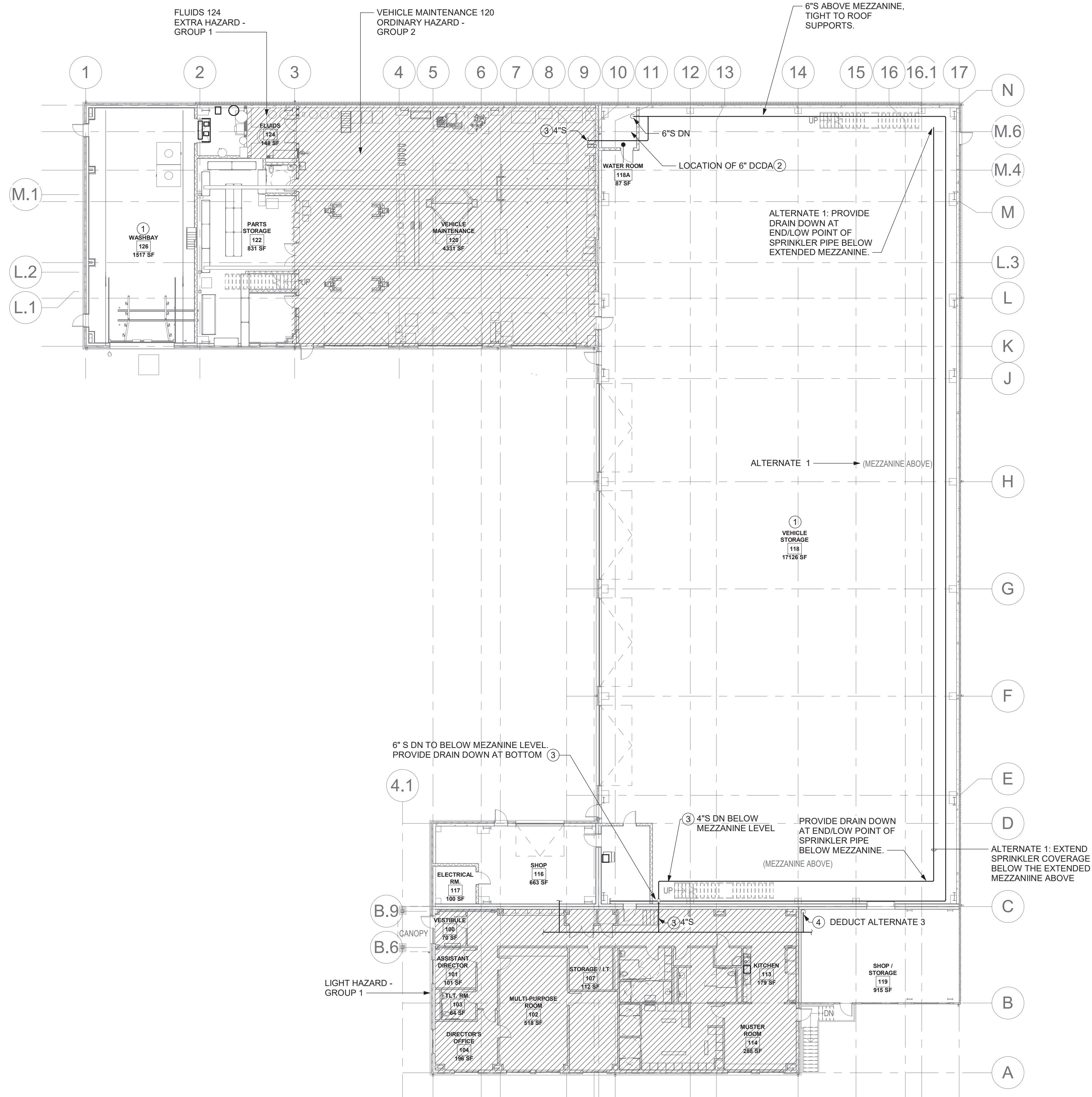
Drawing Title:

FIRE PROTECTION SCHEDULES, GENERAL NOTES & SYMBOLS LIST

Sheet Number:

FP001

WESTON & SAMPSON COPYRIGHT 2019



FP101 DRAWING NOTES

- 1 FIRE HAZARD CLASSIFICATION SHALL BE ORDINARY HAZARD GROUP 1 UNLESS OTHERWISE NOTED.
- 2 FIRE SERVICE BACK FLOW PREVENTOR PROVIDED BY THE PLUMBING CONTRACTOR. COORDINATE SIZE AND CLEARANCE REQUIREMENTS WITH THE PC BASED ON THE RESULTS OF THE HYDRAULIC CALCULATIONS. REFER TO THE PLUMBING DRAWINGS FOR ROOM LAYOUT.
- 3 SPRINKLER MAIN SIZES INDICATED ARE FOR SUGGESTED ROUTING REFERENCE ONLY. THIS CONTRACTOR SHALL HYDRAULICALLY CALCULATE AND CONFIRM ALL MAINS AND BRANCH PIPING.
- 4 DEDUCT ALTERNATE No. 3: 2" S DN TO BASEMENT LEVEL. PROVIDE DRAIN DOWN AT BOTTOM.

1 OVERALL FIRST FLOOR FIRE PROTECTION PLAN
1/16" = 1'-0"

Project:

VILLAGE OF ARDSLEY, NY



NEW PUBLIC WORKS FACILITY

220 HEATHERDELL ROAD,
VILLAGE OF ARDSLEY,
NEW YORK 10502

Weston & Sampson

WESTON & SAMPSON, P.E., L.S., L.A., P.C.
1 Winners Circle Suite 130
Albany, NY 12205
(508) 696-3034 (800) SAMPSON
www.westonandsampson.com

Consultants:

Calgi 55 Lafayette Avenue, Suite 350
White Plains, NY 10603
(914) 662-9403
www.calgiconstruction.com
Established 1919

ENGINEERING
Mechanical/Electrical Engineering Consultants
Capital District | Rochester | Buffalo | Syracuse
ALBANY OFFICE: 1000 N. ZEEB RD., 4TH FL.
ALBANY, NY 12203-1411 (518) 885-2771
www.sampsonengineering.com

RHINEBECK
ARCHITECTURE



Seal:



Revisions:

Rev	Date	Description

Issued For: BID

 PROJECT  TRUE

SCALE: AS NOTED

Date: APRIL 7, 2022

Drawn By: CES

Reviewed By: PJW

Approved By: BAB

W&S Project No: N2190088

Drawing Title:

OVERALL FIRE PROTECTION FLOOR PLAN

Sheet Number:

FP101