

MECHANICAL GENERAL NOTES:

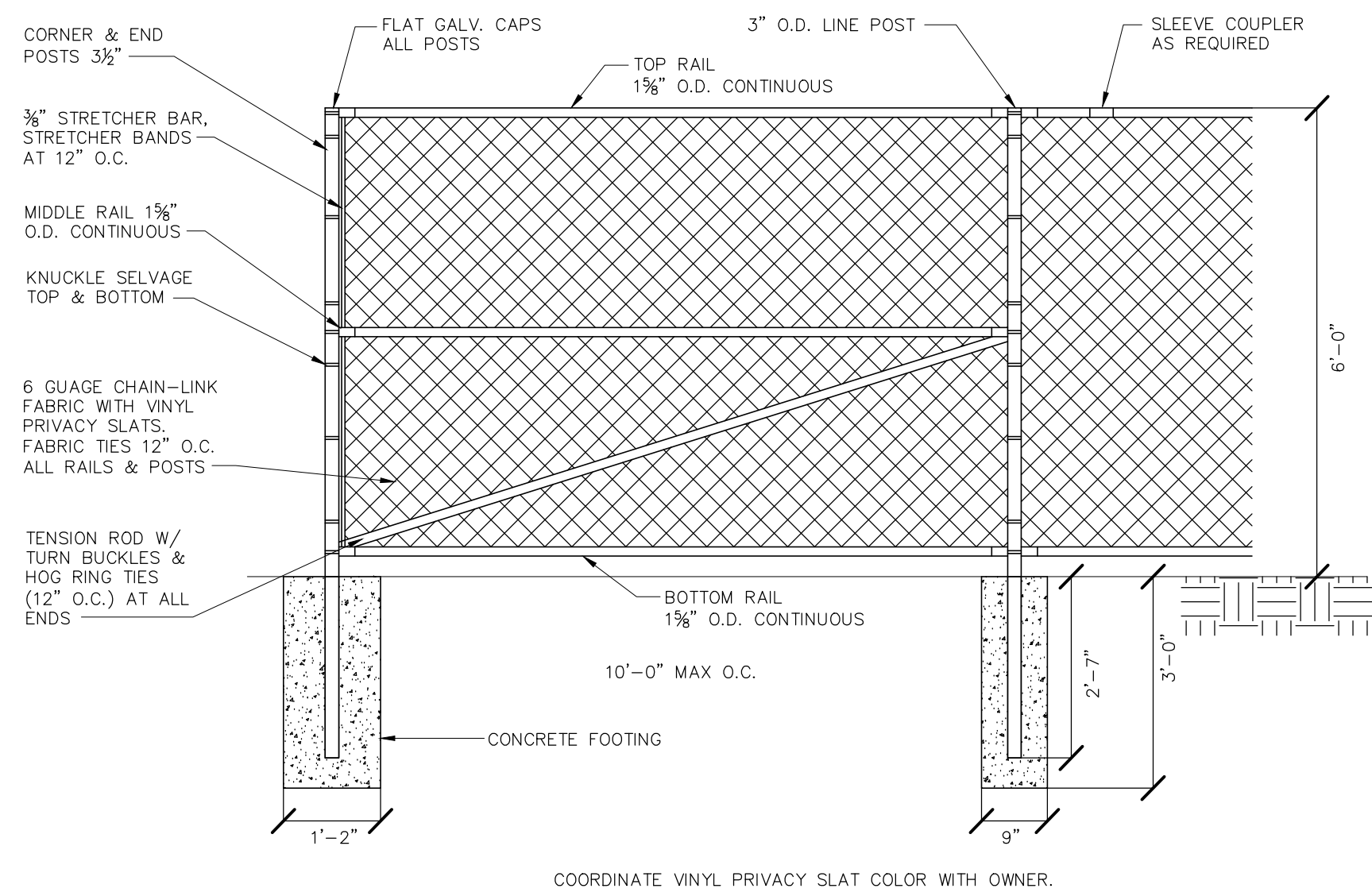
- DRAWINGS ARE DIAGRAMMATIC AND INDICATE GENERAL ARRANGEMENT OF SYSTEMS AND WORK INCLUDED IN THE CONTRACT. IT IS NOT INTENDED TO SPECIFY OR SHOW EVERY OFFSET, FITTING OR COMPONENT; HOWEVER, CONTRACT DOCUMENTS REQUIRE COMPONENTS AND MATERIALS WHETHER OR NOT INDICATED OR SPECIFICALLY SPECIFIED TO MAKE THE SYSTEMS BEING INSTALLED COMPLETE, CODE COMPLIANT, TESTED AND OPERATIONAL.
- CONTRACTOR SHALL FIELD VERIFY ALL LOCATIONS, DIMENSIONS AND ELEVATIONS PRIOR TO CONSTRUCTION.
- ALL MATERIALS, EQUIPMENT, METHODS OF INSTALLATION, REMOVALS AND DISPOSAL SHALL BE IN ACCORDANCE WITH THE STANDARDS, REGULATIONS, CODES, ORDINANCES, AND LAWS OF LOCAL, STATE, AND FEDERAL GOVERNMENTS, AND OTHER AUTHORITIES THAT HAVE LAWFUL JURISDICTION.
- PERFORM WORK, PROVIDE MATERIALS AND EQUIPMENT FOR SYSTEMS SHOWN, SPECIFIED AND DESCRIBED ON DRAWINGS. COMPLETELY COORDINATE ALL TRADES OF THIS CONTRACT AND PROVIDE COMPLETE AND FULLY FUNCTIONAL INSTALLATION. ALL WORK IN THIS SET TO BE COMPLETED UNDER THIS CONTRACT, UNLESS OTHERWISE INDICATED.
- PROTECT ALL EXISTING AND NEW BUILDING ELEMENTS (INSTALLED BY OTHER CONTRACTS) FROM DAMAGE. CONTRACTOR SHALL RESTORE ALL DAMAGED ELEMENTS TO ORIGINAL OR BETTER CONDITION.
- WORK SHALL BE EXECUTED IN A WORKMANLIKE MANNER AND SHALL PRESENT NEAT, RECTILINEAR APPEARANCE WHEN COMPLETED. MAINTAIN MAXIMUM HEAD ROOM AT ALL TIMES. DO NOT RUN PIPES, DUCTS, AND CONDUIT EXPOSED UNLESS SHOWN AND NOTED TO BE EXPOSED ON DRAWINGS.
- MATERIALS AND EQUIPMENT SHALL BE NEW AND INSTALLED ACCORDING TO MANUFACTURER'S INSTRUCTIONS AND RECOMMENDATIONS. MAINTAIN MANUFACTURER'S EQUIPMENT CLEARANCES.
- CONTRACTOR IS RESPONSIBLE FOR ALL WORK RELATED TO ISOLATING, SHUTTING DOWN, DRAINING, FILLING AND TESTING SYSTEMS TO ALLOW FOR COMPLETION OF WORK. INTERRUPTIONS TO EXISTING SERVICES AND SYSTEMS SHALL BE AS SHORT AS POSSIBLE AND AT A TIME AND DURATION APPROVED BY THE OWNER AND UTILITY AS APPLICABLE. INCLUDE ALL PREMIUM TIME ASSOCIATED WITH INTERRUPTIONS. ALL SYSTEM INTERRUPTIONS SHALL BE SCHEDULED WITH OWNER, UTILITY AND COORDINATED WITH OTHER TRADE WORK.
- ALL EQUIPMENT PIPING, WIRING, INSULATION ETC. INSTALLED IN HVAC AIR PLENUM SPACES SHALL MEET CODE REQUIREMENTS FOR SMOKE AND COMBUSTIBILITY.
- SEAL ALL PENETRATIONS THROUGH FIRE RATED WALLS, PARTITIONS AND FLOORS WITH UL RATED MATERIALS/METHODS EQUIVALENT TO FIRE RATING OF ASSEMBLY.
- COORDINATE ALL WALL/FOUNDATION PENETRATIONS WITH GENERAL CONTRACT AND SEAL WEATHERTIGHT. PROVIDE STAINLESS STEEL ESCUTCHEON PLATE/TRIM RING FOR EACH ABOVE GRADE PENETRATION (BOTH SIDES).
- PROVIDE PROPER ACCESS TO EQUIPMENT THAT REQUIRES INSPECTION, REPLACEMENT OR REPAIR. ACCESS PANELS/DOORS SHALL BE A MINIMUM OF 12"x12", UNLESS OTHERWISE NOTED.
- DO NOT SUPPORT EQUIPMENT FROM SUSPENDED CEILINGS. ALL SUPPORT SHALL BE FROM BUILDING STRUCTURE OR FROM CEILING SUSPENSION SYSTEM WHICH HAS BEEN REINFORCED. SUPPORTS SHALL BE SELECTED AND INSTALLED TO PROVIDE A VIBRATION FREE INSTALLATION.
- CLEANING DURING MECHANICAL WORK: THE MECHANICAL ROOM AND ROOMS WHERE WORK WILL BE DONE TO MINIMIZE DISTURBANCE IN THE BUILDINGS. WORKERS ARE TO USE PATHWAYS AND FACILITIES AGREED UPON WITH THE DISTRICT DESIGNEE IN WRITING. THE AREA OUTSIDE THE BUILDING WHERE CUTTING WELDING OR STORAGE IS ALLOWED IS TO BE FENCED AT ALL TIMES. THE CONTRACTOR WILL ON A DAILY BASIS CLEAN THE GROUNDS AND THE BUILDING OF ANY DEBRIS OR GARBAGE GENERATED BY THEIR WORK.
- PROTECT EXISTING SURFACES AND EQUIPMENT NOT MARKED FOR REMOVAL OR MODIFICATION. CONTRACTOR RESPONSIBLE FOR REPAIR OF EXISTING SURFACES AND/OR EQUIPMENT TO THE APPROVAL OF THE OWNER.

MECHANICAL SYMBOLS			
	- THERMOSTAT - ARROW INDICATES DEVICE/ZONE CONTROL		- NEW PIPING, DUCTWORK, AND EQUIPMENT
	- FREEZESTAT		- EXISTING TO REMAIN PIPING, DUCTWORK, AND EQUIPMENT
	- STATIC PRESSURE SENSOR		- PIPING, DUCTWORK, AND EQUIPMENT FOR REMOVAL
	- TEMPERATURE SENSOR W/CONTROL WIRING AND 1/2" CONDUIT WITH CLEAR PLASTIC GUARD(LOCKABLE)		- BALL VALVE
	- HUMIDITY SENSOR		- CIRCUIT SETTER
	- FLOW SENSOR		- CHECK VALVE
	- DUCT SMOKE DETECTOR		- CONTROL VALVE - 2 WAY
	- VARIABLE FREQUENCY DRIVE		- DRAIN VALVE WITH HOSE BIB
	- ROUND DUCTWORK		- UNION
	- 4- WAY CEILING SUPPLY DIFFUSER		- STRAINER WITH BLOWDOWN
	- CEILING EXHAUST/RETURN REGISTER		- REDUCER OR INCREASER
	- FLOW ARROW		- BRANCH FROM BOTTOM OF PIPE
	- CIRCUIT SETTER		- BRANCH FROM TOP OF PIPE
			- PIPE ELBOW DN
SINGLE LINE		DOUBLE LINE	
	- MANUAL VOLUME DAMPER		- RETURN/EXHAUST AIR RECTANGULAR ELBOW DN
	- AUTOMATIC AIR DAMPER		- ROUND ELBOW UP
	- DUCT SMOKE DETECTOR		- ROUND ELBOW DN
	- FLEXIBLE CONNECTION		- CENTERED TRANSITION
	- SUPPLY/OUTSIDE AIR RECTANGULAR ELBOW UP		- OFFSET TRANSITION
	- SUPPLY/OUTSIDE AIR RECTANGULAR ELBOW DN		- SQUARE TO ROUND TRANSITION
	- RETURN/EXHAUST AIR RECTANGULAR ELBOW UP		- RADIUS ELBOW
	- 45° DEGREE LEADING EDGE "BRANCH TAKEOFF"		- MITERED ELBOW WITH TURNING VANES

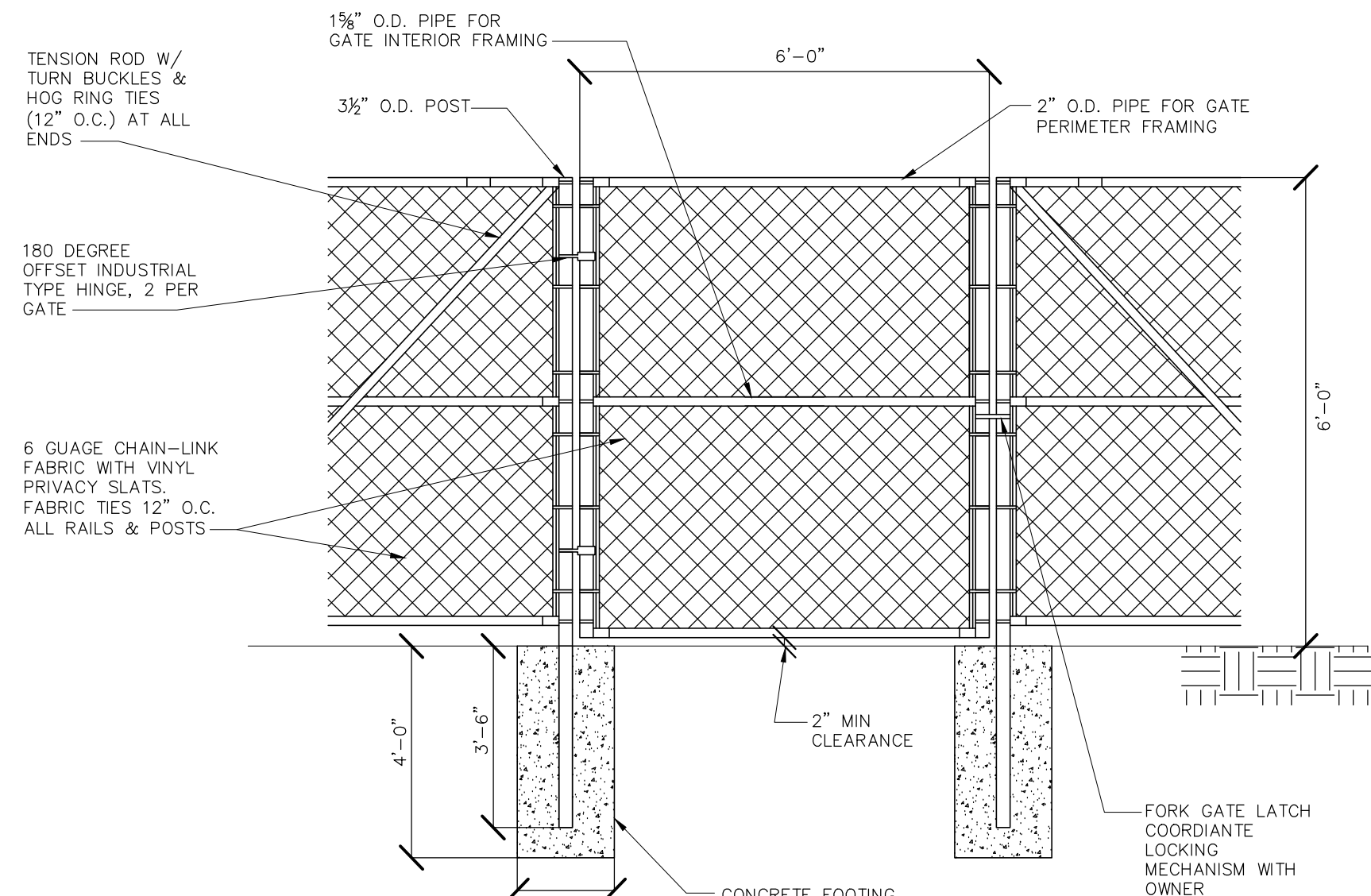
HVAC ABBREVIATIONS	
AAD	AUTOMATIC AIR DAMPER
ACCU	AIR COOLED CONDENSING UNIT
AD	ACCESS DOOR
AHU	AIR HANDLING UNIT
AMP	AMPERAGE
BDD	BACKDRAFT DAMPER
BHP	BRAKE HORSEPOWER
BMS	BUILDING MANAGEMENT SYSTEM
BTU	BRITISH THERMAL UNIT
CFM	CUBIC FEET PER MINUTE
CH	CABINET HEATER
CLG	CEILING
C	CONDENSATE
DB	DRYBULB TEMPERATURE
DDC	DIRECT DIGITAL CONTROL (SYSTEM)
DEG	DEGREE
DIA	DIAMETER
DN	DOWN
DP	DEWPOINT TEMPERATURE
DX	DIRECT EXPANSION
EA	EXHAUST AIR
EAT	ENTERING AIR TEMPERATURE
EF	EXHAUST FAN
EFF	EFFICIENCY
EG	EXHAUST GRILLE
ESP	EXTERNAL STATIC PRESSURE
EXH	EXHAUST
F	FAHRENHEIT
FD	FIRE DAMPER
FF	FINAL FILTER
FLR	FLOOR
FPM	FEET PER MINUTE
FSTAT	FREEZESTAT
FT	FEET
FT HD	FEET OF HEAD
FT WG	FEET OF WATER GAUGE
FV	FACE VELOCITY
G	GAS
GAL	GALLON
GPM	GALLONS PER MINUTE
HD	HEAD
HP	HORSEPOWER
L	LOUVER
MAT	MIXED AIR TEMPERATURE
MAU	MAKE-UP AIR UNIT
MBH	1,000 BTU/HR
MCA	MINIMUM BRANCH CIRCUIT AMPACITY
MD	MOTORIZED DAMPER
OA	OUTSIDE AIR
OAI	OUTSIDE AIR INTAKE
PD	PRESSURE DROP
R	REMOVE
RA	RETURN AIR
RL	REFRIGERANT LIQUID
RPM	REVOLUTIONS PER MINUTE
RS	REFRIGERANT SUCTION
S	SATISFACTORY
SAT	SUPPLY AIR TEMPERATURE
SEN	SENSIBLE HEAT
SG	SPECIFIC GRAVITY
SP	STATIC PRESSURE
TAB	TESTING, ADJUSTING, BALANCE
TSTAT	THERMOSTAT
TYP	TYPICAL
UC	UNDER CUT
VD	VOLUME DAMPER
WB	WETBULB
WG	WATER GAUGE
ΔT	TEMPERATURE DIFFERENCE

HVAC REMOVAL NOTES:

- THE SCOPE OF REMOVAL SHOWN ON "REMOVALS" DRAWING IS DIAGRAMMATIC ONLY AND INDICATES THE INTENT OF THE WORK TO BE PERFORMED AND NOT THE COMPLETE SCOPE OF DEMOLITION AND/OR REMOVAL WORK. IT SHALL BE THE RESPONSIBILITY OF THE CONTRACTOR TO REMOVE OR RELOCATE ANY RELATED MECHANICAL DEVICES/ITEMS EVEN IF NOT SPECIFICALLY INDICATED TO BE REMOVED ON THESE DRAWINGS IN ORDER TO ACCOMMODATE NEW WORK.
- EQUIPMENT/ITEMS SHOWN CROSS HATCHED ON DRAWINGS ARE ITEMS TO BE REMOVED. ANY DEVICES/ITEMS REMOVED SHALL INCLUDE (BUT SHALL NOT BE LIMITED TO) THE REMOVAL OF ALL ASSOCIATED PIPING, CONTROLS, ETC. THAT ARE NOT INCORPORATED IN THE NEW LAYOUT. THE CONTRACTOR SHALL PERFORM ALL WORK REQUIRED TO INSURE CONTINUITY OF SERVICE TO EXISTING REMAINING EQUIPMENT. NO EXTRAS RELATING TO THE SCOPE OF WORK DESCRIBED WILL BE ALLOWED.
- EQUIPMENT, PIPING, ETC. REQUIRED TO RECONNECT SHALL BE INSTALLED CONCEALED WITHIN THE SUSPENDED CEILINGS, PARTITIONS AND/OR WALLS, FLOORS. NO SURFACE MOUNTED OR EXPOSED EQUIPMENT, PIPING, ETC., SHALL BE PERMITTED, UNLESS SPECIFICALLY INDICATED.
- ALL ITEMS TO BE REMOVED SHALL BE REVIEWED WITH THE OWNER PRIOR TO REMOVAL. OWNER SHALL HAVE FIRST SALVAGE RIGHTS. ITEMS THE OWNER WISHES TO KEEP SHALL BE REMOVED WITH CARE AND STORED AS DIRECTED BY OWNER. ITEMS THE OWNER DOES NOT WISH TO KEEP SHALL BE REMOVED FROM THE SITE AND DISPOSED OF PROPERLY.



1 6' CHAINLINK FENCE
SCALE: NONE



2 SINGLE CHAINLINK GATE
SCALE: NONE

IT IS A VIOLATION OF THE LAW FOR ANY PERSON UNLESS HE IS ACTING UNDER THE DIRECTION OF A LICENSED PROFESSIONAL ARCHITECT/ENGINEER TO ALTER THE DRAWING IN ANY WAY. ALL ALTERATIONS MUST HAVE THE SEAL, ATTACHED ALONG WITH A DESCRIPTION OF THE ALTERATION, THE SIGNATURE AND DATE. COPYRIGHT © 2019

ENGINEER:

Eisenbach & Ruhke Engineering, P.C.
281 Genesee Street - Union, NY 13801
(607) 542-2000 FAX (607) 542-7464
www.erenpg.com

CONSULTANT(S):

STAMP

**WARWICK VALLEY CSD
EMERGENCY CHILLER PROJECT**
144 SANDFORDVILLE ROAD, WARWICK, NY 10990

(914) SANDFORDVILLE ESJ 144 SANDFORDVILLE ROAD, WARWICK, NY 10990

SV SED NO. 44-21-01-06-0019-014

PROJECT NO.	05-21-06
BID SET	2.24.2022
REVISION	
DRAWN BY	JMU/BS
CHECKED BY	JIE
SHEET SIZE	30" X 42"
SCALE	AS NOTED
SHEET TITLE	
ABBREVIATIONS AND SYMBOLS	
SHEET NO.	
M-001	